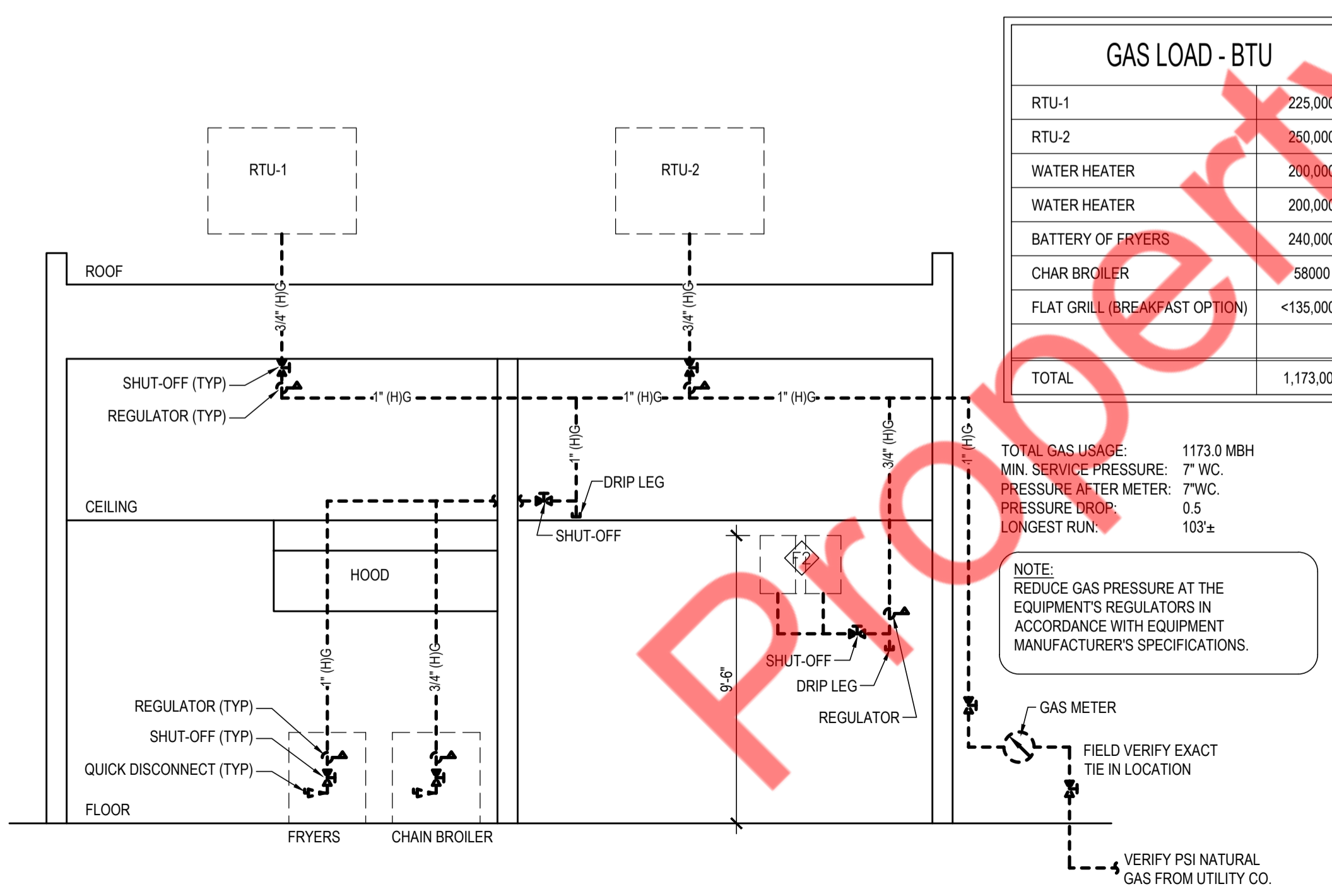


PLUMBING SYMBOLS	
SYMBOL	DESCRIPTION
	FLOOR DRAIN
	FLOOR DRAIN W/ FUNNEL
	FLOOR SINK
DCO	DOUBLE CLEAN OUT
FCO	FLOOR CLEAN OUT
WCO	WALL CLEAN OUT
VTR	VENT THRU ROOF
BFP	BACKFLOW PREVENTER
S.O.V.	SHUT OFF VALVE
	WASTE, BELOW FLOOR
	SYRUP LINES/CHASE, OVERHEAD
	VENT
	FILTERED WATER
	DOMESTIC COLD WATER
	DOMESTIC HOT WATER
	GAS LINE

**1 WATER, GAS, & PLUMBING SUPPLY PLAN**

P1 SCALE: 1/4" = 1'-0"



GAS LOAD - BTU	
RTU-1	225,000
RTU-2	250,000
WATER HEATER	200,000
WATER HEATER	200,000
BATTERY OF FRYERS	240,000
CHAR BROILER	58000
FLAT GRILL (BREAKFAST OPTION)	<135,000>
<b>TOTAL</b>	<b>1,173,000</b>

TOTAL GAS USAGE: 1173.0 MBH  
 MIN. SERVICE PRESSURE: 7" WC  
 PRESSURE AFTER METER: 7" WC  
 PRESSURE DROP: 0.5  
 LONGEST RUN: 103±

NOTE:  
 REDUCE GAS PRESSURE AT THE EQUIPMENT'S REGULATORS IN ACCORDANCE WITH EQUIPMENT MANUFACTURER'S SPECIFICATIONS.

NOTE:  
 ALL PLUMBING SHALL BE INSTALLED IN ACCORDANCE WITH THE 2015 INTERNATIONAL PLUMBING CODE, UNLESS PRIOR AUTHORIZATION IS GRANTED BY THE ADMINISTRATIVE AUTHORITY. ALL PIPING, PIPE FITTINGS, TRAPS, FIXTURES, MATERIAL, AND DEVICES USED IN THE PLUMBING SYSTEM SHALL MEET CODE SECTIONS 605: (1) BE LISTED OR LABELED (THIRD PARTY CERTIFIED) BY A LISTING AGENCY; (2) COMPLY WITH THE APPROVED APPLICABLE RECOGNIZED STANDARDS REFERENCED IN THIS CODE; (3) BE FREE FROM DEFECTS. CROSS-LINK POLYETHYLENE (PBX) WATER DISTRIBUTION SYSTEMS MUST MEET SECTION 605 AND TABLE 605.3.605.4.605.5. A. THE TUBING MUST COMPLY WITH ASTM F876, ASTM F877, OR CSAB 137.5. B. ASTM F876 TUBING MUST BE MARKED WITH THE STANDARD OF THE FITTINGS TO BE USED. C. THE FITTINGS MUST BE MARKED WITH ASSE 1061, ASTM F877, ASTM F1807, ASTM F1960, ASTM F1961, ASTM F2080, ASTM F2159, ASTM F2735, OR CSAB 137.5.

THE WATER DISTRIBUTION SYSTEM SHALL BE DISINFECTED PER SECTION 610.

THE PLUMBING SYSTEM SHALL BE TESTED IN ACCORDANCE WITH SECTION 312.

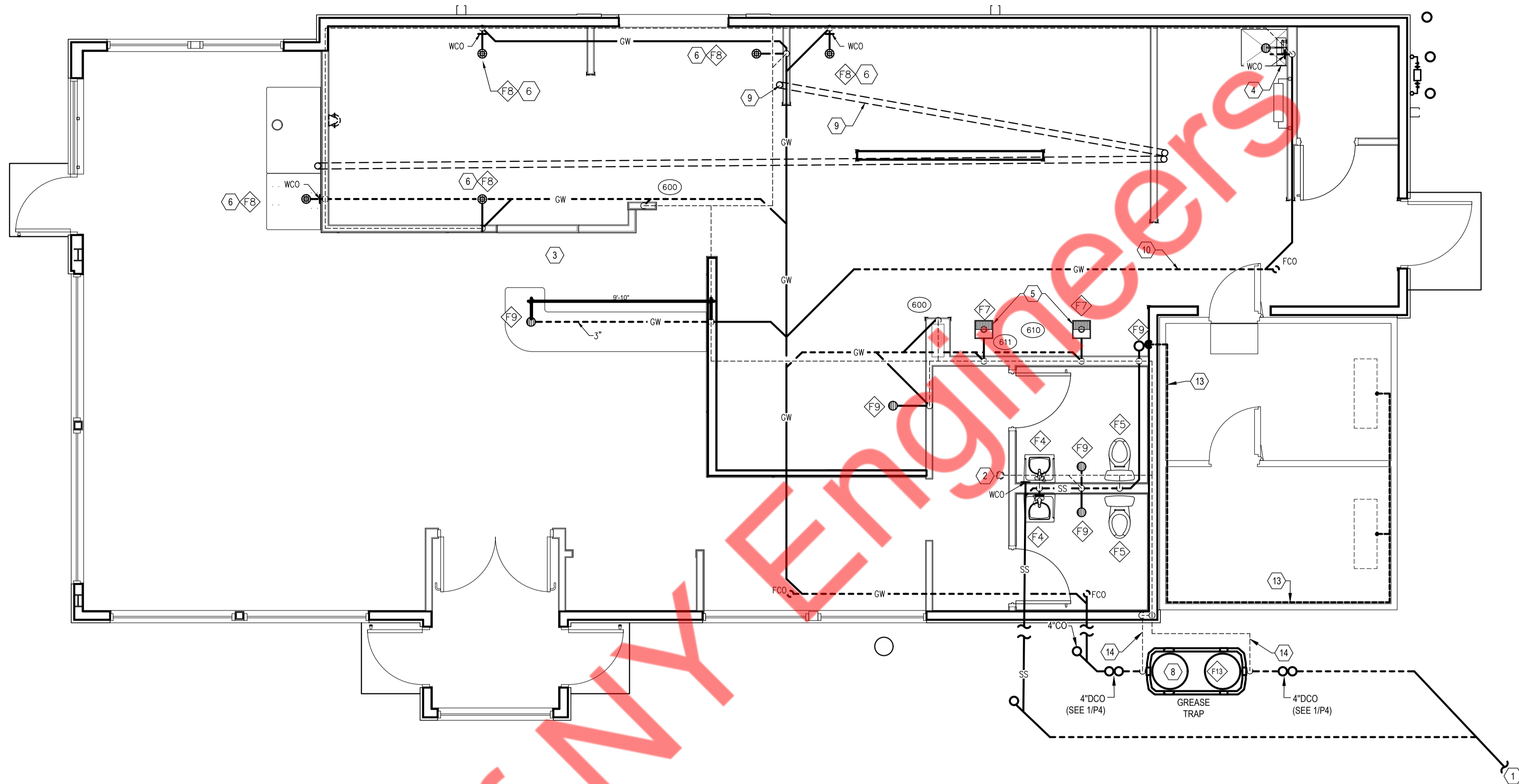
LEGEND	
NO.	DESCRIPTION
F1	WATER METER
F2	WATER HEATERS
F3	SERVICE SINK FAUCET
F4	LAVATORY
F5	WATER CLOSET
F6	HOSE BIB
F10	BACKFLOW PREVENTER
F12	MIXING VALVE

- GENERAL NOTES**
- REFER TO EQUIPMENT SCHEDULE FOR PLUMBING SPECIFICATIONS FOR EQUIPMENT PROVIDED BY OWNER AND/OR OTHERS.
  - PROVIDE SHUT OFF VALVES AT ALL FIXTURES.
  - CHEMICAL SANITIZER WITH HOT WATER (120°), IS ASSUMED FOR DISHWASHING IN STORE. LOCAL CODES SHOULD BE VERIFIED PRIOR TO CONSTRUCTION TO CONFIRM SPECIFIC REQUIREMENTS.
  - PLUMBING CONTRACTOR TO VERIFY IN FIELD ALL EXISTING UTILITIES, DIMENSIONS AND CONDITIONS PRIOR TO BIDDING AND CONSTRUCTION. DIMENSIONS GIVEN TO ROUGH-INS ARE CRITICAL FOR EQUIPMENT PLACEMENT.
  - ALL DOMESTIC WATER PIPING INSULATED WITH 1" POLYETHYLENE THERMA-CELL INSULATION WITH ALL JOINTS AND SEAMS SEALED, OR EQUAL.
  - REFRIGERATION SITE GLASS IS INCLUDED WITH ALL REFRIGERATION EQUIPMENT FURNISHED BY OWNER AND/OR OTHERS.
  - GAS PIPING CONTRACTOR MAY USE FLEXIBLE AND CONTINUOUS PIPING AS LISTED AND APPROVED AGA TracPipe™ BY "megaFLEX" IF ALLOWED BY PREVAILING CODES.
  - WATER PIPING CONTRACTOR MAY USE FLEXIBLE AND CONTINUOUS PIPING (ADJUST PIPE SIZES AS REQUIRED), ZURN "PEX" #C-03-NSF-PW-CL-TD-ASTM, IF ALLOWED BY PREVAILING CODES.
  - PLUMBING CONTRACTOR IS RESPONSIBLE FOR ALL CONDENSATE DRAINS.
  - PLUMBING CONTRACTOR TO PROVIDE INDIRECT WASTE AND CONDENSATE PIPING FOR ALL KITCHEN EQUIPMENT.
  - IF WATER SOFTENER REQUIRED BY OWNER SHALL SERVE ALL FIXTURES OTHER THAN ICE MACHINES, DRINK SYSTEMS, ICED TEA BREWERS, COFFEE MAKERS, HOSE BIBS, CARBONATORS AND ALL
  - (H) HIGH PRESSURE GAS PIPE SIZES BASED ON 2 PSI DELIVERY PRESSURE WITH A 1PSI DROP IN PRESSURE THROUGH A TOTAL EQUIVALENT LENGTH OF 115 FT.
- KEY NOTES**
- CONNECT 1 1/2" CW TO SITE CONNECTION. COORDINATE LOCATION WITH CIVIL. VERIFY WATER PRESSURE ON SITE. PROVIDE PRESSURE REDUCING VALVE AS NECESSARY.
  - WATER METER REMOTE READOUT LOCATED ON THE EXTERIOR WALL.
  - HALF HIGH WALL. NO FULL HEIGHT VERTICAL PLUMBING LINES.
  - SURFACE MOUNTED PLUMBING LINES (AFTER WALL FINISH IS APPLIED)
  - IF LOCAL GAS PRESSURE REQUIRES A REGULATOR ON THE GAS OPERATED EQUIPMENT, THE PLUMBING CONTRACTOR IS TO PROVIDE AND INSTALL THE GAS REGULATORS AS REQUIRED.
  - MAINTAIN CLEARANCE REQUIRED BY CODE BETWEEN THE SANITARY SEWER AND THE WATER LINE.
  - PROVIDE 1/2" OD PUSH/PULL FITTING FROM WATER FILTER TO ICE MAKER.
  - PROVIDE SHUT-OFF WITH DRAIN MOUNTED AT WATER METER, PIPE TO BE SLOPED AFTER SHUT-OFF VALVE TOWARDS HOSE BIB TO ALLOW FOR DRAINING OF THE PIPE.
  - WATER HEATER FLUE AND COMBUSTION AIR VENT THROUGH ROOF SEE DETAIL 8/P4.
  - PLUMBING CONTRACTOR TO PROVIDE AND INSTALL A SHUT-OFF VALVE AND A STAINLESS STEEL BACKFLOW PREVENTOR AT CARBONATOR.
  - PROVIDE ONE MANUALLY OPERATED SHUT-OFF VALVE ON BRANCH GAS PIPING TO APPLIANCES LOCATED ACCESSIBLE ABOVE CEILING TILE.
  - QUICK DISCONNECTS AND RETENSION CABLES PROVIDED WITH FRYERS & CHAIN BROILER
  - GALVANIZED OR COPPER GAS PIPING UP THROUGH CURB TO ROOFTOP HVAC EQUIPMENT.
  - 3/4" GAS PIPING TO WATER HEATER, SEE DETAIL 8/P4.
  - GAS METER (DO NOT MOUNT ON BUILDING EFIS) WITH SHUT-OFF VALVES AND PRESSURE REGULATOR PROVIDED BY THE GAS COMPANY. GAS METER SIZED FOR 1173 MBH @ 2 PSI DELIVERY PRESSURE ON BUILDING SIDE OF METER.
  - LOCATE FLUSH LEVER ON THIS SIDE OF TOILET PER ADA REQUIREMENTS.
  - 5/8" NPT PLASTIC CONDENSATE LINE TO SERVICE SINK SURFACE MOUNT TIGHT TO WALL. SLOPE TO DRAIN.
  - PLUMBING CONTRACTOR TO PROVIDE QUICK DISCONNECT AND 3/4" BLACK IRON PIPE FROM FRYER TO USED COOKING OIL RECYCLING TANK. PROVIDE CONSTANT MIN. 1/4" PER FT. SLOPE TO RECYCLING TANK. PROVIDE BACK TO BACK 45° ELBOWS FOR ANY CHANGE IN DIRECTION.
  - PLUMBING CONTRACTOR TO MAKE FINAL CONNECTION TO COUNTER RECEPTACLES AFTER COUNTER INSTALLATION.

**2 GAS PIPING SCHEMATIC**

P1





PLUMBING SYMBOLS	
SYMBOL	DESCRIPTION
	FLOOR DRAIN
	FLOOR DRAIN W/ FUNNEL
	FLOOR SINK
DCO	DOUBLE CLEAN OUT
FCO	FLOOR CLEAN OUT
WCO	WALL CLEAN OUT
VTR	VENT THRU ROOF
BFP	BACKFLOW PREVENTER
S.O.V.	SHUT OFF VALVE
	WASTE, BELOW FLOOR
	SYRUP LINES/CHASE, OVERHEAD
	VENT
	FILTERED WATER
	DOMESTIC COLD WATER
	DOMESTIC HOT WATER
	GAS LINE

**1 PLUMBING WASTE AND VENT PLAN**  
**P2** SCALE: 1/4" = 1'-0"

**FIXTURE SPECIFICATIONS**

- F1 WATER METER: BY GENERAL CONTRACTOR LOCALLY, REMOTE DIGITAL READER COORDINATE LOCATION W/OWNER. SEE DETAIL 6/P4.
- F2 WATER HEATER: SEE SCHEDULE ON P4. 1" CW AND 1" 120 HW. PIPING
- F3 SERVICE SINK FAUCET: T&S BRASS B-0665-BSP
- F4 WALL MOUNTED LAVATORY WITH CARRIER: SLOAN SS-3003 WHITE 3-HOLE, CODE 3873003 -SENSOR ACTIVATED FAUCET: TOTO TEL105-D10E#CP, CODE 817018, COVER PLATE: TOTO TN71V100S, CODE 234306. WITH OPEN GRID STRAINER. -STOPS: CHROME PLATED ANGLE STOPS. -DRAIN: CHROME PLATED 17 GAUGE METAL P-TRAP MAINTAIN 29" FROM FLOOR TO TOP OF LAV., PROVIDE A.D.A. WRAPS ON DRAIN AND WATER SUPPLY LINES.
- F5 WATER CLOSET: TOTO CST705ULN#01 (ADA-CST705ULN#01) -SENSOR FLUSH VALVE: TOTO TET1LN32#CP, CODE -STOP: CHROME PLATED ANGLE STOP -SEAT: SOLID PLASTIC ELONGATED OPEN FRONT W/CHECK HINGE (WHITE)
- F6 HOSE BIBB: ZURN ECOLOTROL #Z1320-EZ. ENCASED, NON-FREEZE, ANTI-SIPHON, AUTOMATIC DRAINING. HOSE BIBB INSTALLED AT +18" ABOVE FINISH GRADE.
- F7 FLOOR SINK: ZURN #FD-2370-PV3 WITH 12" PVC TOP
- F8 FLOOR DRAIN W/FUNNEL: ZURN #ZN415-2NL-73 WITH ROUND FUNNEL
- F9 FLOOR DRAIN : ZURN #ZN415-2NH-5B
- F10 REDUCED PRESSURE ZONE BACKFLOW PREVENTER: ZURN #34-375XL, 3/4" FEMALE THREADED BODY NPT CONNECTIONS AND BRONZE STRAINER. LEAD FREE.
- F12 THERMOSTATIC MIXING VALVE FOR RESTROOM FIXTURES: ZURN #12-ZW1017XLC
- F13 GREASE INTERCEPTOR: SCHIER GB-250 GREASE INTERCEPTOR, VERIFY SIZE WITH LOCAL CODES.
- FCO FLOOR CLEANOUT: ZURN #ZN1400-4NH
- WCO WALL CLEANOUT: ZURN #Z1441

**FIXTURE & DRAIN CONNECTION SCHEDULE**

NO.	DESCRIPTION	WASTE	VENT	WATER COLD	WATER HOT	GAS	FILTER WATER	REMARKS
F1	WATER METER			1 1/2"				SEE DETAIL SHEET P4
F2	WATER HEATER	3/4" P.R.V.		1"	1"	3/4"		SEE DETAIL SHEET P4
F3	SERVICE SINK FAUCET			3/4"	3/4"			
F4	LAVATORY	1 1/2"	1 1/2"	1/2"	1/2"			
F5	WATER CLOSET	3"	2"	1/2"				
F6	HOSE BIB				3/4"			
F7	FLOOR SINK	3"	2"					
F8	FLOOR DRAIN	3"	2"					WITH FUNNEL
F9	FLOOR DRAIN	3"	2"					
F10	BACKFLOW PREVENTER							
F12	MIXING VALVE			3/4"	3/4"			OUTPUT AT 110" FOR RESTROOM FIXTURES
F13	GREASE INTERCEPTOR	4"	4"					

NOTE:  
 1. THIS IS A PROTOTYPICAL SCHEDULE. ALL EQUIPMENT PEICES MAY NOT BE USED.  
 2. ALL FIXTURES PROVIDED AND INSTALLED BY PLUMBING CONTRACTOR.

**EQUIPMENT & DRAIN CONNECTION SCHEDULE**

NO.	DESCRIPTION	WASTE	VENT	WATER COLD	WATER HOT	GAS	FILTER WATER	REMARKS
161	LOBBY DRINK HEAD W/ICE DISP.	3/4" ID						INDIRECT DRAIN LINE TO FLOOR DRAIN. B.F.P. AS REQD. BY CODE
310	DT DRINK HEAD W/ICE BIN	3/4" ID						INDIRECT DRAIN LINE TO FLOOR DRAIN. B.F.P. AS REQD. BY CODE
511	CARBONATOR						1/2"	PROVIDE S.S. DOUBLE CHECK BACKFLOW PROTECTOR
502	OPT. COFFEE MAKER						3/8"	PROVIDE FLEX WATER LINE FROM S.O.V.
203	SOFTSERVE FREEZERS	1/2" ID						AIR COOLER-REMOTE
400	CHAIN BROILER				3/4"			58,000 BTU
403	3-VAT FRYERS					1"		225,000 BTU
534	BLAST FREEZER	3/4" ID						INDIRECT WASTE TO FLOOR DRAIN
540	ICE MAKER	3/4" ID						INDIRECT WASTE TO FLOOR DRAIN
541	ICE BIN	3/4" ID						INDIRECT WASTE TO FLOOR DRAIN
545	ICE WATER FILTER						1/2"	
501	OPT. HOT WATER DISP.						1/4"	
600	HAND SINK	1 1/2"	1 1/2"	1/2"	1/2"			
610	SCRUB SINK	2" ID	1 1/2"	3/4"	3/4"			1/2" FLEX WATER LINE AT S.O.V. & INDIRECT WASTE TO FLOOR SINK
611	VEGATABLE SINK	2" ID	1 1/2"	3/4"	3/4"			1/2" FLEX WATER LINE AT S.O.V. & INDIRECT WASTE TO FLOOR SINK
620	CORNER SOFTSERVE SCRUB SINK	2" ID	1 1/2"	3/4"	3/4"			1/2" FLEX WATER LINE AT S.O.V. & INDIRECT WASTE TO FLOOR SINK
650	WATER FILTER SYSTEM				3/4"			SEE DETAIL 7/P4
670	TREAT WORK TABLE	3/4"						INDIRECT DRAIN LINE TO FLOOR SINK

NOTE:  
 1. THIS IS A PROTOTYPICAL SCHEDULE. ALL EQUIPMENT PEICES MAY NOT BE USED.  
 2. EQUIPMENT PROVIDED BY OWNER AND INSTALLED BY PLUMBING CONTRACTOR.

**GENERAL NOTES**

1. ALL FLOOR DRAINS TO BE LEVEL WITH FLOOR, EXCEPT IN THE RESTROOMS.
2. REFER TO PLUMBING NOTES ON SHEET P1
3. HORIZONTAL DRAINAGE PIPING MUST BE INSTALLED WITH A UNIFORM SLOPE OF 1/4 PER FOOT. WHERE MUNICIPAL SEWER DEPTH, STRUCTURAL FEATURES, OR BUILDING ARRANGEMENT PRECLUDE THIS SLOPE, A MINIMUM SLOPE OF 1/8 INCH PER FOOT MAY BE UTILIZED FOR PIPING 4 INCHES AND LARGER IF APPROVED BY THE AHJ.
4. PVC SANITARY SEWERS MUST MEET ASTM D2665, D3034, F891, F949, OR F1488 WITH APPROVED FITTINGS (SEE TABLE 702.4) AND PVC MAY CROSS ABOVE OR LESS THAN 12 INCHES BELOW POTABLE WATER LINES (SEE SECTION 703.1). SOLVENT WELDED JOINTS MUST USE ASTM F656 PURPLE PRIMER AND ASTM D2564 CEMENT.
5. THE PIPE MATERIAL TO BE USED FOR THE DRAIN WASTE AND VENT SYSTEM MUST COMPLY WITH 2015 INTERNATIONAL PLUMBING CODE SECTION 702.

**KEY NOTES**

1. CONNECT 4" WASTE LINE TO MAIN. COORDINATE LOCATION WITH CIVIL.
2. EXTEND VENT THRU ROOF. MAINTAIN 10'-0" FROM ALL O.A. INTAKES.
3. WALLS NOT TO CEILING. NO FULL HEIGHT VERTICAL PIPING ALLOWED.
4. ROUTE DRAIN FROM BACKFLOW PREVENTER TO SERVICE SINK.
5. INDIRECT DRAIN LINE TO FLOOR SINK.
6. INDIRECT DRAIN LINE TO FLOOR DRAIN.
7. WATER HEATER PTR VALVE DRAIN LINE TO SERVICE SINK.
8. GREASE TRAP. SEE DETAIL 9/P4. VERIFY WITH LOCAL CODE IF REQ'D.
9. DRINK LINES (SYRUP, FILTERED WATER & CO2 BUNDLE) OVERHEAD FROM LOCATIONS SHOWN, LINES REQUIRE SWEEPING AND MINIMAL BENDS. WHEN PENETRATING METAL FRAMING, GROMMETS MUST BE USED TO PROTECT LINES FROM DAMAGE. LOCATIONS SHOWN ARE ILLUSTRATIVE, CHASES SHOULD BE CONFIGURED AS DIRECT AND WITH AS FEW BENDS AS POSSIBLE. INSULATION MAY BE REQUIRED, VERIFY WITH VENDOR. DRINKS LINES SURFACE MOUNTED TO FACE OF WALL, S.S. COVER PROVIDED BY VENDOR
10. GREASE TRAP, SEE DETAIL 9/P4. VERIFY REQUIREMENTS WITH LOCAL CODES.
11. MAINTAIN CLEARANCE REQ'D BY CODE BETWEEN SANITARY SEWER AND WATER LINE UNDERGROUND.
12. DRINK LINES (SYRUP, MISTY SYRUP, FILTERED WATER, & CO2 BUNDLE) OVERHEAD FROM LOCATIONS SHOWN, LINES REQUIRE SWEEPING AND MINIMAL BENDS. WHEN PENETRATING METAL FRAMING, GROMMETS MUST BE USED TO PROTECT LINES FROM DAMAGE. LOCATIONS SHOWN ARE ILLUSTRATIVE, CHASES SHOULD BE CONFIGURED AS DIRECT AND WITH AS FEW BENDS AS POSSIBLE. INSULATION MAY BE REQUIRED, VERIFY WITH VENDOR. G.C. TO PROVIDE 2" PVC CHASE INSIDE WALL TO 48" AFF BEHIND MISTY MACHINE.
13. CONDENSATE DRAIN LINE (1/2" COPPER). MOUNT TIGHT TO WALL AND SLOPE TO DRAIN. DRAIN LINE MUST BE WRAPPED WITH A HEAT TAPE AND INSULATED WITHIN THE WALK-IN FREEZER.
14. VENT PIPING BELOW GRADE