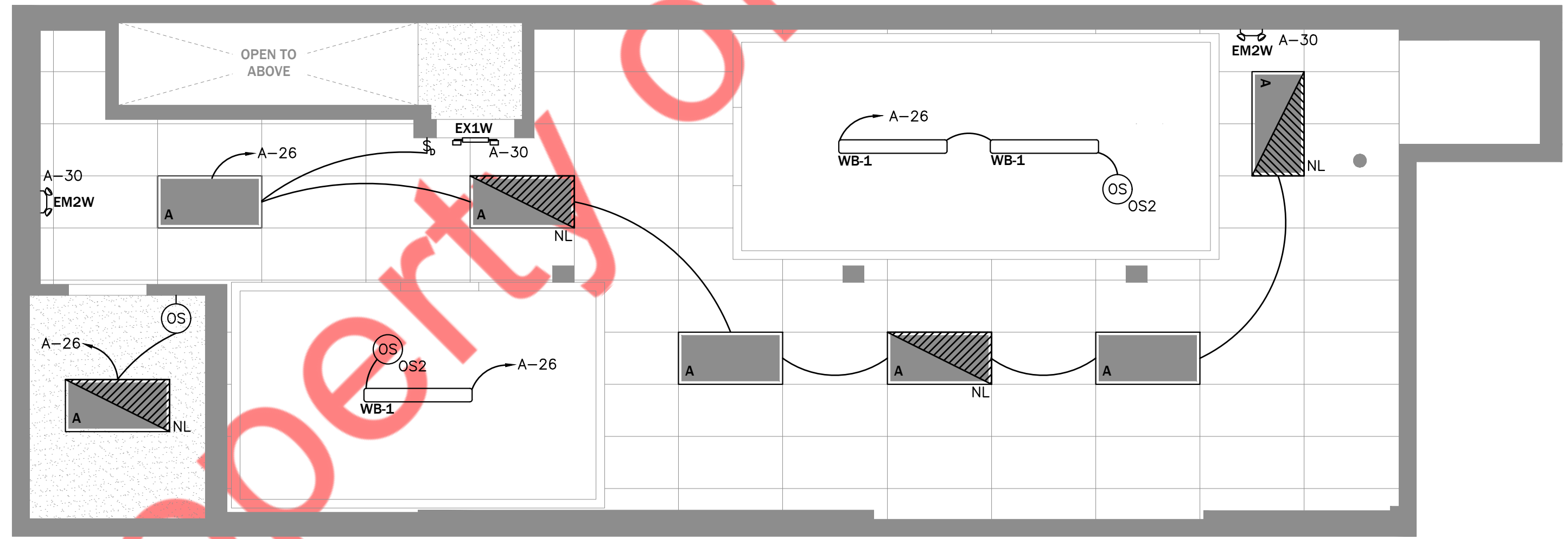


LIGHT FIXTURE SCHEDULE					
FIXTURE	DESCRIPTION	MANUFACTURER	FIXTURE NUMBER	FIXTURE WATTAGE	VOLTAGE
AH	RECESSED CAN HOUSING FOR 6" LED LIGHTS. DIRECT CONNECT.	NORA	NHIC-17QAT	NA	120
A1	LED - DOWNLIGHT, 3000K. DIRECT CONNECT LED. WHITE	NORA	NHIC-6LMRAT	NA	120
A7	LED - 5" CYLINDER LIGHT, 3000K. INTEGRAL LED, BLACK	BOLT	BEBRK-LED56-BW-3-ECO	12	120
B	2x2 LED FLAT PANEL LED. 4000K. WHITE. BACK OF HOUSE ONLY	MAXLITE	RR61330W-L9	11	120
EM2B	EMERGENCY LIGHT. BLACK. HIGH LUMEN OUTPUT	PROGRESS	P5774-31/30K	17	120
EM2W	EMERGENCY LIGHT. WHITE. HIGH LUMEN OUTPUT	BOLT	BELEDPNL2X2-40W-4K	40	120
EX1B	EXIT/EMERGENCY LIGHT COMBO, HIGH LUMEN, BLACK, RED LETTERS. REMOTE CAPACITY. FRONT OF HOUSE ONLY.	MAXLITE	MLFP22BL3040	30	120
EX1W	EXIT/EMERGENCY LIGHT COMBO, HIGH LUMEN, WHITE, RED LETTERS. REMOTE CAPACITY	BARRON	LP422-30-4K	30	120
EX1RB	EXTERIOR EMERGENCY LIGHT. BLACK. TWIN LAMP. WEATHER PROOF.	BOLT	BELEDR-1B-HL	1.8	120
HL1	HOOD LAMP. LED. 3000K. ENCLASURE RATED, 1600 LUMENS	BEST LIGHTING	LEDR-1B-HL	1.8	120
P4L	LARGE (14") BRASS GLOBE LIGHT. INTEGRAL LED. 3500K	EMERGENSEE	SELEDR-1B-HL	1.8	120
P4S	SMALL (10") BRASS GLOBE LIGHT. INTEGRAL LED. 3500K	BOLT	BELEDR-1W-HL	1.8	120
P5	UM BRIGHT GLOBE PENDANT. INTEGRAL LED. 3500K	EMERGENSEE	SELEDR-1W-HL	1.8	120
T1	THEATRICAL HORIZONTAL LED HEAD. MONOPOINT MOUNT. BLACK. 3500K. SPOT LIGHTS OVER FIXED TABLES	BOLT	BELEDCKTEU2RBRCHL	3.7	120
T2	THEATRICAL VERTICAL LED TRACK HEAD. TRACK MOUNT. ART PACK LIGHTS, BLACK, 3500K. THEATRICAL SHADES. 18" EXTENSION ROD	BEST LIGHTING	LEDCXTEU2RBRCHL	3.7	120
T2T	TRACK SYSTEM 2", 4", 6" LENGTH	BOLT	BELEDCKTEU2RWRCHL	3.7	120
WB1	WALK-IN COOLER/FREEZER LIGHT. INTEGRAL LED, NSF RATED, 4000K, WHITE	BEST LIGHTING	LEDCXTEU2RWRCHL	3.7	120
WB1	WALK-IN COOLER/FREEZER LIGHT. INTEGRAL LED, NSF RATED, 4000K, WHITE	EMERGI-LITE	ELXN400-R-2LEDR	3.6	120
WP4	EXTERIOR SECURITY LIGHT, INTEGRAL LED WITH PHOTOCELL 5000K	BOLT	BERHLED2-PWP-A/V/B	4	120
K12	EXTERIOR BUILDING DECORATIVE LED LIGHT SILVER, 3500K	BEST LIGHTING	RHLED2-PWP-MVB	4	120
A6	LED - DOWNLIGHT - EXTERIOR. 3000K. DIRECT CONNECT. NICKEL	GREEN CREATIVE	15A21G4D1M/R30	15	120
T11	EXTERIOR LED TAPE LIGHTING SYSTEM, 3500K	MAXLITE	E15A19ND30/G3	15	120
BL1	LED LIGHT, 5 SPOT COLOR CHANGING, SURFACE MOUNT	BOCK LIGHTING	P240-LG4W141	10	120
BL2	8" LED BLADE LIGHT, WHITE (OPTIONAL)	ARKANSAS LIGHTING	4241P-LED	15	120
G1	LED LIGHT, 5 SPOT COLOR CHANGING, EXTENDED ARM	BOCK LIGHTING	P240-LG4W101	10	120
FL1	FLAG POLE FLOOD LIGHT, BLACK	ARKANSAS LIGHTING	4241P-9-LED	15	120
S1	GLOBE LIGHT LED STRIP 12 INCH SPACING. WARM WHITE. 96W POWER SUPPLY WITH NSF WET LOCATION 3/8" STRAIN RELIEF	ARKANSAS LIGHTING	4240P-LED	20	120
A7	LED - 5" CYLINDER LIGHT, 3500K, INTEGRAL LED, BLACK	CONTECH LIGHTING	CTL8061CM35MVD-B	10	120
PF1	EXTERIOR WALL MOUNTED PATIO FAN, BLACK	CONTECH LIGHTING	CTL8061V535D-8-8D16A 18" EXTENSION	10	120
		CONTECH LIGHTING	LT-2B, LT-4B, LT-6B		
		MAXLITE	LSV4U3540	34.2	120

- ### GENERAL ELECTRICAL NOTES
- COORDINATE WORK WITH MECHANICAL, REFRIGERATION AND EQUIPMENT CONTRACTORS, INCLUDING COOLER/FREEZER WORK AND ICE MACHINE CONDENSING UNITS.
 - VERIFY ROUGH-IN DIMENSIONS AND POWER REQUIREMENTS WITH KITCHEN EQUIPMENT DISTRIBUTOR PRIOR TO ROUGH-IN.
 - PROVIDE FINAL CONNECTIONS WITHIN FRONT COUNTER, COOKCENTER PANEL, REMOTE REFRIGERATION UNITS, AND ICE MACHINE REMOTE UNIT WHEN INSTALLED BY VENDOR.
 - VERIFY AVAILABLE FAULT CURRENT AT PRIMARY SERVICE AND COMPATIBILITY WITH MODULAR PANEL SYSTEM.
 - ENSURE ADEQUATE CONDUIT SIZE FOR ELECTRICAL AND COMMUNICATION WIRING ON SITE AND INTO BUILDING.
 - CIRCUITS MAY BE GROUPED WITHIN COMMON CONDUITS PER NEC REQUIREMENTS UNLESS NOTED OTHERWISE.
 - PROVIDE WALL BOX WITH 1/2" CONDUIT WITH PULLSTRING AND NYLON BUSHING STUBBED ABOVE NEAREST ACCESSIBLE CEILING FOR THERMOSTATS, TEMPERATURE SENSORS, CARBON DIOXIDE SENSOR, AND HUMIDISTATS UNLESS OTHERWISE NOTED.
 - WIRE ROOF TOP UNIT CONTROL CIRCUIT THROUGH AUXILIARY CONTACTS IN SMOKE DETECTOR AND MAKE ALL FINAL CONNECTIONS. (TYPICAL OF ALL ROOF TOP UNITS)
 - COOKCENTER IS ASSEMBLED AND PREWIRED AT THE FACTORY. WIRING IS PROVIDED IN THE PRE-INSTALLED SPLICE BOX. COILED AND TAGGED. A LENGTH OF CONDUIT WITH WIRES IS PROVIDED FOR THE REMOTE CONDENSING ROOFTOP UNIT. RUNS POWER FROM THE SPLICE BOX TO THE COOKCENTER PANEL.
 - ROOFTOP UNIT IS FACTORY PROVIDED WITH DISCONNECT AND UNPOWERED SERVICE RECEPTACLE.
 - IN AREAS WITHOUT CEILINGS OR WHERE ANY CONDUITS, CONDUCTORS, FEEDERS, OR LOW-VOLTAGE WALL EMT CONDUIT. CABLING IS VISIBLE. ALL WIRING SHALL BE IN RIGID GALVANIZED STEEL (RGS) OR THIN WALL EMT CONDUIT. BX, AC, AND MC CABLE ARE NOT PERMITTED. CONDUITS ARE TO BE RUN TIGHT TO DECK EITHER PARALLEL OR PERPENDICULAR TO BUILDING LINES AND ONLY DROP AT POINT OF CONNECTION. JUNCTION BOXES SHALL HAVE CIRCUIT NUMBERS WRITTEN ON THE INSIDE OF THE JUNCTION BOX COVER.
 - SEAL ROOF PENETRATIONS PER ROOFING MANUFACTURER'S INSTRUCTIONS.
 - COORDINATE WORK ABOVE THE CEILING WITH OTHER TRADES TO PROVIDE THE GREATEST POSSIBLE CLEARANCE. CONDUITS SHALL BE ROUTED IN THE DIRECTION OF THE TRUSSES.
 - ONLY EMT CONDUITS ARE ALLOWED IN RECEIVING/DRY STORAGE.
 - DEFINITIONS: **FURNISH** MEANS TO SUPPLY AND DELIVER TO PROJECT SITE, READY FOR INSTALLATION. **INSTALL** MEANS TO PLAN IN POSITION AND MAKE CONNECTIONS FOR SERVICE OR USE. **PROVIDE** MEANS TO FURNISH AND INSTALL, COMPLETE AND READY FOR INTENDED USE.

- ### LIGHTING GENERAL NOTES
- CONNECT EXIT/EMERGENCY/NIGHT FIXTURES TO UNSWITCHED HOT CONDUCTOR AHEAD OF ANY LIGHTING CONTROLS.
 - REFER TO ARCHITECTURAL REFLECTED CEILING PLAN AND DETAILS FOR THE LOCATION OF ALL LIGHTING FIXTURES AND ALL OTHER CEILING MOUNTED EQUIPMENT. VERIFY MOUNTING HEIGHTS AND FINISHES WITH ARCHITECT PRIOR TO ROUGH-IN.
 - REFER TO THE POWER PLANS FOR LOCATION OF ELECTRICAL EQUIPMENT.
 - PROVIDE INDICATED CONDUCTOR SIZE FOR ENTIRE CIRCUIT WHERE CONDUCTOR SIZES ARE SHOWN ON HOMERUNS.
 - PROVIDE A DEDICATED NEUTRAL WITH ALL DIMMING SYSTEM CIRCUITS. NO COMMON NEUTRALS SHALL BE ALLOWED.
 - PROVIDE (2) ADDITIONAL #12 CONDUCTORS FOR ALL 0-10V DIMMING CIRCUITS.
 - ALL EXTERIOR LIGHTING SHALL BE CONTROLLED WITH ROOF MOUNTED PHOTOCELL.

- ### LIGHTING LEGEND
- ⊙ RECESSED CAN LIGHT FIXTURE
 - ⊙ RECESSED CAN NIGHT LIGHT FIXTURE
 - LED LIGHT FIXTURE
 - ▤ LED NIGHT LIGHT FIXTURE
 - HANGING LIGHT FIXTURE
 - ⊥ MONO POINT LIGHT FIXTURE
 - ⊙ GLOBE PENDANT LIGHT
 - ⊙ PENDANT LIGHT
 - ⊥ TRACK HEAD
 - LIGHTING TRACK
 - LED TAPE LIGHT
 - BUILDING MOUNTED DECORATIVE LIGHT
 - ↔ EMERGENCY FLOOR LIGHT (WALL MOUNTED OR CEILING SURFACE MOUNTED)
 - ↔ EMERGENCY REMOTE EGRESS HEAD
 - A-1 CIRCUIT NUMBER
 - B1 FIXTURE SYMBOL
 - \$ DIMMER SWITCH, (LEVITON #IP710-DLZ-WH)
 - ⊙ OCCUPANCY SENSOR (CEILING MOUNTED)
 - ⊙ OCCUPANCY SENSOR (WALL MOUNTED)
 - \$ SINGLE POLE WALL SWITCH AT 4'-6" A.F.F.

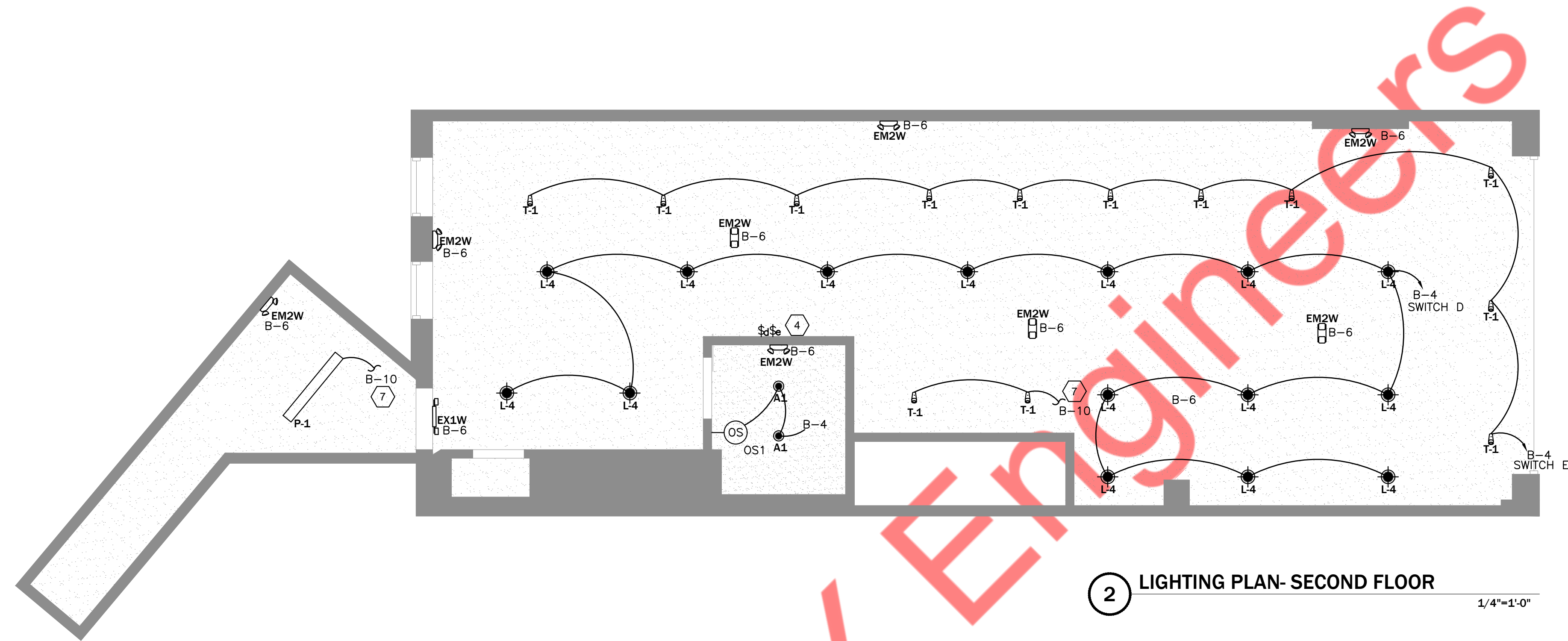


1 LIGHTING PLAN- CELLAR 1/4"=1'-0"

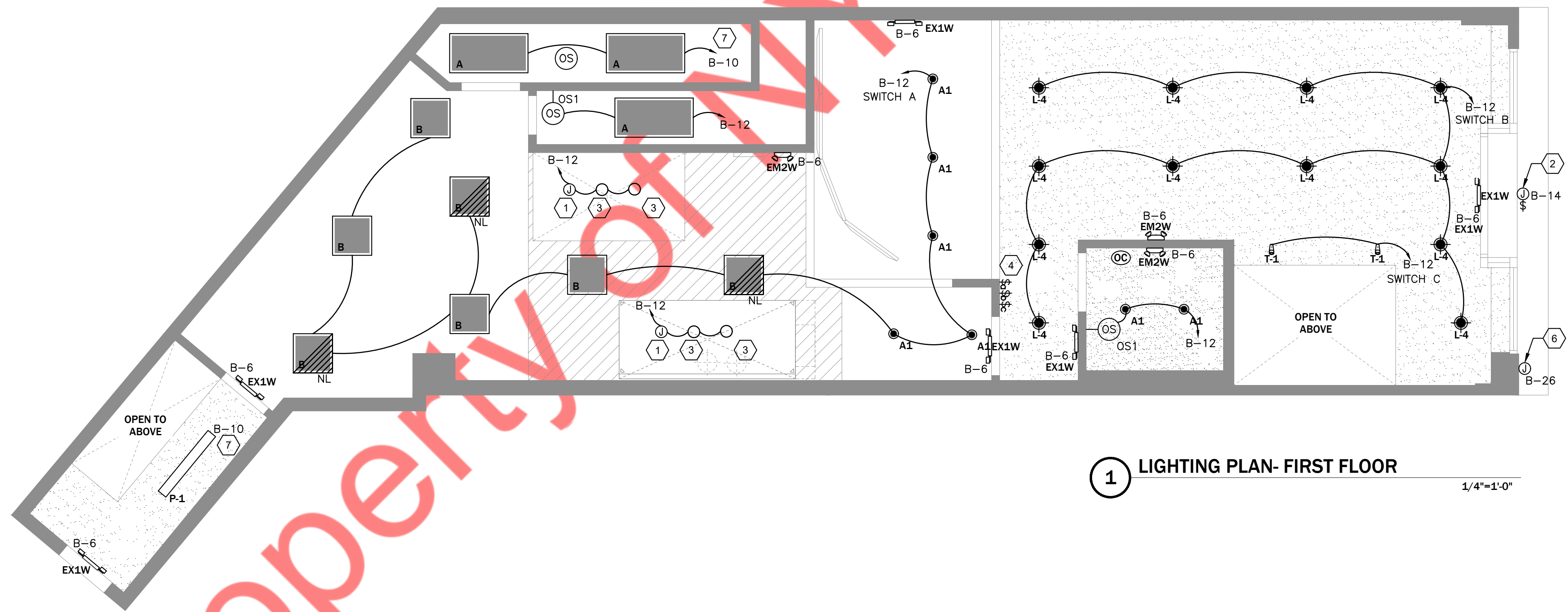
LIGHT DENSITY CALCULATIONS

SPACE	GENERAL LIGHTING LOAD (W)	SQUARE FOOTAGE	WSF
DINING	690	1263.0	0.55
KITCHEN PREP	385	550.0	0.70
STAIRS	160	219.0	0.73
WALK-IN	102	253.0	0.40
TOILET	44	87.0	0.51
CELLAR	350	744	0.47

*SPACE CONTAINS ELECTRICAL EQUIPMENT. LIGHTING CONTROL REDUCTION IS EXEMPTED UNDER C405.2.2.1 EXCEPTION 2.2.3



2 LIGHTING PLAN- SECOND FLOOR
1/4"=1'-0"



1 LIGHTING PLAN- FIRST FLOOR
1/4"=1'-0"

- LIGHTING GENERAL NOTES
- A. CONNECT EXIT/EMERGENCY/NIGHT FIXTURES TO UNSWITCHED HOT CONDUCTOR AHEAD OF ANY LIGHTING CONTROLS.
 - B. REFER TO ARCHITECTURAL REFLECTED CEILING PLAN AND DETAILS FOR THE LOCATION OF ALL LIGHTING FIXTURES AND ALL OTHER CEILING MOUNTED EQUIPMENT. VERIFY MOUNTING HEIGHTS AND FINISHES WITH ARCHITECT PRIOR TO ROUGH-IN.
 - C. REFER TO THE POWER PLANS FOR LOCATION OF ELECTRICAL EQUIPMENT.
 - D. PROVIDE INDICATED CONDUCTOR SIZE FOR ENTIRE CIRCUIT WHERE CONDUCTOR SIZES ARE SHOWN ON HOMERUNS.
 - E. PROVIDE A DEDICATED NEUTRAL WITH ALL DIMMING SYSTEM CIRCUITS. NO COMMON NEUTRALS SHALL BE ALLOWED.
 - F. PROVIDE (2) ADDITIONAL #12 CONDUCTORS FOR ALL 0-10V DIMMING CIRCUITS.
 - G. ALL EXTERIOR LIGHTING SHALL BE CONTROLLED WITH ROOF MOUNTED PHOTOCCELL.

- # CODED NOTES:
- 1. JUNCTION BOX ABOVE CEILING FOR HOOD LIGHTS AND EXHAUST HOOD.
 - 2. PROVIDE WEATHERPROOF JUNCTION BOX AND TOGGLE TYPE 20A-1P DISCONNECT FOR SIGNAGE. COORDINATE EXACT REQUIREMENTS WITH SIGN CONTRACTOR. VERIFY LOCATION PRIOR TO ROUGH IN.
 - 3. PROVIDE LAMP FOR HOOD LIGHT. SUBSTITUTION OF CFL OR INCANDESCENT LAMP IS PROHIBITED.
 - 4. LOCATION OF LIGHTING SWITCH BANK. REFER TO SWITCH AND HOOD SUPPRESSION ELEVATION ON SHEET ES.1 FOR ADDITIONAL INFORMATION.
 - 5. PROVIDE JUNCTION BOX AND SWITCH FOR ILLUMINATED MIRROR AT 4'-0" AFF AND CONNECT TO CIRCUIT SHOWN. REFER TO ARCHITECTURAL ELEVATIONS FOR EXACT MOUNTING LOCATION.
 - 6. LIGHTS IN CANOPY PROVIDED BY CANOPY MANUFACTURER.
 - 7. LIGHTS TO BE ENERGIZED AT ALL TIMES. (I.E EMERGENCY FIXTURES TO REMAIN ON)

ELECTRICAL LEGEND

⊕	JUNCTION BOX	⊞	DISCONNECT SWITCH BY ELECTRICAL CONTRACTOR
⊞	* = A-H AS COOKLINE JUNCTION BOXES REFER TO DETAIL #7 ON SHEET ES.1	⊞	DISCONNECT SWITCH SUPPLIED WITH EQUIPMENT
⊕	20 AMP 120V-1PH SIMPLEX RECEPTACLE +16" AFF OR AS NOTED	RT	REMOTE PIEZO ALERT FROM RTU-1 & RTU-2 SMOKE DETECTORS
⊕	20 AMP 120V-1PH DUPLEX RECEPTACLE +16" AFF OR AS NOTED	W	EMERGENCY POWER KILL SWITCH (48" AFF) 120 VOLT MOMENTARY CONTACT NORMALLY OPEN EMERGENCY OFF SWITCH, EATON 10250T WITH SHROUD. REFER SHUNT TRIP CIRCUIT DETAIL, SHEET E3.1
GFI ⊕	20 AMP 120V-1PH GROUND FAULT INTERRUPTING RECEPTACLE	F	REMOTE FIRE SUPPRESSION PULL STATION (48")
WP ⊕	20 AMP 120V-1PH WEATHERPROOF RECEPTACLE	VC	VOLUME CONTROL
R ⊕	20 AMP 120V-1PH RECESSED RECEPTACLE	⊕	ELECTRIC MOTOR
T ⊕	20 AMP 120V-1PH TAMPER RESISTANT RECEPTACLE	☎	TELEPHONE CONNECTION
⊕	120V-1PH QUADRUPLX RECEPTACLE	☎	TELEPHONE/DATA CONNECTION
⊕	20 AMP 120V-1PH HUBBELL #USB20X2BK RECEPTACLE	☎	DATA CONNECTION
⊕	20 AMP QUADRUPLX 120V-1PH HUBBELL # USB20X2W (QTY 2)	⊞	PARTIAL CIRCUIT
⊕	20 AMP 120V-1PH HUBBELL #IG5362 ISOLATED GROUND RECEPTACLE	5 3	HOME RUN TO PANEL. CIRCUIT NUMBERS, PHASE, NEUTRAL & GROUND CONDUCTORS INDICATED ALONG WITH ISOLATED GROUND CONDUCTOR IF APPLICABLE.
⊕	20 AMP QUAD HUBBELL #IG5362 (QTY 2) ISOLATED GROUND RECEPTACLE	T S	THERMOSTAT, TEMPERATURE/HUMIDITY SENSOR BY MECHANICAL CONTRACTOR
⊕	20 AMP CONTROLLED RECEPTACLE		
⊕	SPECIAL RECEPTACLE, SEE KITCHEN EQUIPMENT SCHEDULE FOR NEMA STYLE		

POWER GENERAL NOTES

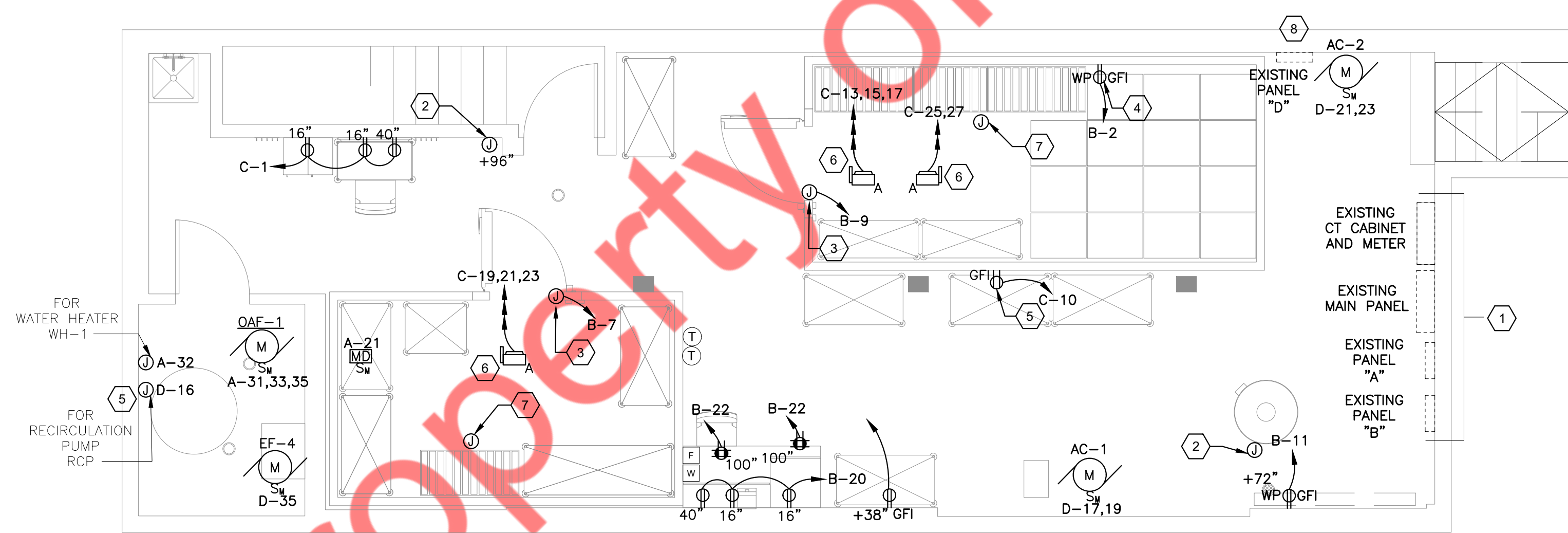
- REFER TO SHEET E1.1 FOR GENERAL ELECTRICAL NOTES.
- VERIFY EXACT LOCATIONS OF HVAC AND PLUMBING EQUIPMENT, CONDUIT STUB-UPS AND POWER CONNECTIONS PRIOR TO ROUGH-IN.
- VERIFY EXACT LOCATION, MOUNTING HEIGHTS AND CONDUIT ROUTING FOR ALL THERMOSTATS, TEMPERATURE SENSORS, HUMIDISTATS SENSORS PRIOR TO ROUGH-IN.
- REFER TO MECHANICAL AND PLUMBING DRAWINGS FOR ADDITIONAL ELECTRICAL REQUIREMENTS. COORDINATE PROVISIONS FOR ALL CONTROL CONDUIT AND WIRING AS REQUIRED FOR INTERLOCKING OF FANS, MOTORS, ETC. REFER TO SPECIFICATIONS FOR ADDITIONAL REQUIREMENTS.
- MOUNT DEVICES INSTALLED ON EQUIPMENT ON NON-REMOVABLE PANEL. COORDINATE LOCATION PRIOR TO COMMENCING ROUGH-IN WORK.
- COORDINATE WORK WITH MECHANICAL, REFRIGERATION AND EQUIPMENT CONTRACTORS, INCLUDING COOLER/FREEZER WORK AND ICE MACHINE CONDENSING UNITS.
- VERIFY ROUGH-IN DIMENSIONS AND POWER REQUIREMENTS WITH KITCHEN EQUIPMENT DISTRIBUTOR PRIOR TO ROUGH-IN.
- HEIGHTS INDICATED FOR RECEPTACLES AND JUNCTION BOXES ARE MEASURED FROM FINISH FLOOR TO THE CENTER OF THE BOX.
- 120V RECEPTACLES IN KITCHEN AND RESTROOMS TO HAVE GROUND-FAULT CIRCUIT INTERRUPTER PROTECTION PROVIDED IN ELECTRICAL PANELS.
- REFER TO RECEPTACLE AND COVER PLATE LEGEND TO ENSURE PROPER RECEPTACLE TYPE, COLOR, AND COVER PLATE.

CODED NOTES:

- EXISTING ELECTRICAL PANELS. E.C TO COORDINATE EXACT LOCATION WITH OWNER/ARCHITECT.
- JUNCTION BOX ABOVE CEILING FOR FOR USED COOKING OIL TANK ALARM. PROVIDE 1" CONDUIT WITH PULL STRING FOR SUPPLIER FOR INSTALLATION OF ALARM. COORDINATE REQUIREMENTS WITH SUPPLIER.
- PROVIDE POWER CONNECTION TO DOOR HEATER & EMERGENCY DOOR ALARM, REFER TO MANUFACTURER'S INSTALLATION INSTRUCTIONS.
- PROVIDE HEAT TRACE AND REQUIRED RECEPTACLE FOR CONDENSATION LINE, COORDINATE WITH PLUMBING CONTRACTOR THE EXACT LOCATION PRIOR TO ROUGH-IN.
- PROVIDE OUTLET FOR RE-CIRC PUMP, COORDINATE EXACT LOCATION AND REQUIREMENT WITH PLUMBING CONTRACTOR. PLACE ON KITCHEN LIGHT CONTROL ZONE.
- EXISTING DISCONNECT SWITCHES OF THE EXISTING WALK-IN COOLER/FREEZER CONDENSERS SHALL REMAIN CONNECTED TO THE RESPECTIVE EXISTING ELECTRICAL PANEL. E.C. SHALL VERIFY EXACT CIRCUIT NUMBER, SIZE OF EXISTING WIRE AND DISCONNECT SWITCHES ALONG WITH THEIR OPERABLE CONDITION IN FIELD. PROVIDE NEW IF FOUND INOPERABLE. BASE BID ACCORDINGLY.
- PROVIDE CONNECTION TO EVAPORATOR POWERED BY ROOF MOUNTED CONDENSER UNIT.
- RELOCATED EXISTING ELECTRICAL PANEL "D". E.C. SHALL VERIFY THE ITS EXISTING LOCATION AND REROUTE/EXTEND INCOMING FEEDER OF THE PANEL "D" UPTO NEW LOCATION AS SHOWN ON THE PLANS.

RECEPTACLE AND COVER PLATE LEGEND

AREA	RECEPTACLE COVER	RECEPTACLE	USB PORTS	SPECIAL NOTES
KITCHEN & GENERAL AREA	STAINLESS STEEL	WHITE	NO	GFI AS NOTED
DEDICATED IT CIRCUITS	STAINLESS STEEL	ORANGE (IG)	NO	CIRCUIT MARKED AS SPG OR IG
DINING ROOM	BLACK	BLACK	YES	TAMPER RESISTANT



1 POWER PLAN- CELLAR

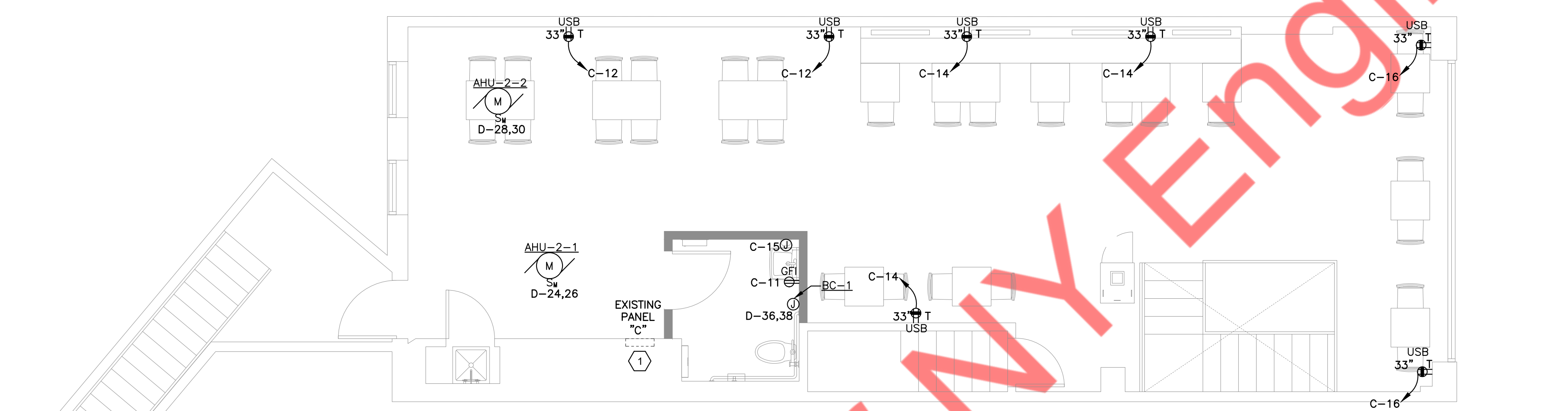
1/4"=1'-0"

POWER GENERAL NOTES

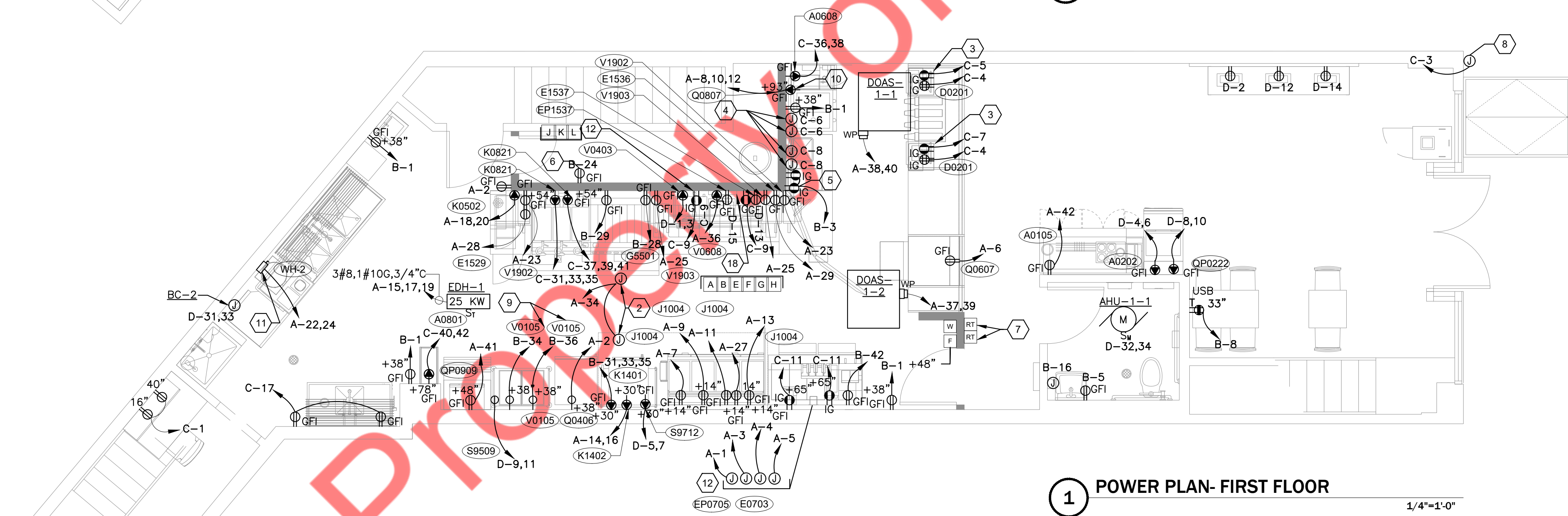
- A. REFER TO SHEET E1.1 FOR GENERAL ELECTRICAL NOTES.
- B. VERIFY EXACT LOCATIONS OF HVAC AND PLUMBING EQUIPMENT, CONDUIT STUB-UPS AND POWER CONNECTIONS PRIOR TO ROUGH-IN.
- C. VERIFY EXACT LOCATION, MOUNTING HEIGHTS AND CONDUIT ROUTING FOR ALL THERMOSTATS, TEMPERATURE SENSORS, HUMIDISTATS SENSORS PRIOR TO ROUGH-IN.
- D. REFER TO MECHANICAL AND PLUMBING DRAWINGS FOR ADDITIONAL ELECTRICAL REQUIREMENTS. COORDINATE PROVISIONS FOR ALL CONTROL CONDUIT AND WIRING AS REQUIRED FOR INTERLOCKING OF FANS, MOTORS, ETC. REFER TO SPECIFICATIONS FOR ADDITIONAL REQUIREMENTS.
- E. MOUNT DEVICES INSTALLED ON EQUIPMENT ON NON-REMOVABLE PANEL. COORDINATE LOCATION PRIOR TO COMMENCING ROUGH-IN WORK.
- F. COORDINATE WORK WITH MECHANICAL, REFRIGERATION AND EQUIPMENT CONTRACTORS, INCLUDING COOLER/FREEZER WORK AND ICE MACHINE CONDENSING UNITS.
- G. VERIFY ROUGH-IN DIMENSIONS AND POWER REQUIREMENTS WITH KITCHEN EQUIPMENT DISTRIBUTOR PRIOR TO ROUGH-IN.
- H. HEIGHTS INDICATED FOR RECEPTACLES AND JUNCTION BOXES ARE MEASURED FROM FINISH FLOOR TO THE CENTER OF THE BOX.
- I. 120V RECEPTACLES IN KITCHEN AND RESTROOMS TO HAVE GROUND-FAULT CIRCUIT INTERRUPTER PROTECTION PROVIDED IN ELECTRICAL PANELS.
- J. REFER TO RECEPTACLE AND COVER PLATE LEGEND TO ENSURE PROPER RECEPTACLE TYPE, COLOR, AND COVER PLATE.

CODED NOTES:

1. EXISTING ELECTRICAL PANELS. E.C TO COORDINATE EXACT LOCATION WITH OWNER/ARCHITECT.
2. 120 VOLT NORMALLY OPEN MOMENTARY CONTACT MICROSWITCH MOUNTED IN HOOD EXTINGUISHING SYSTEM SUCH THAT OPERATION OF EXTINGUISHING SYSTEM SHALL CAUSE MICROSWITCH TO CLOSE (TYPICAL OF 2) REFER TO SHEET M1.1. REFER TO DETAIL 2, SHEET E3.1.
3. FRONT COUNTER REGISTER RECEPTACLES. RUN CIRCUIT WIRING THROUGH CHASE G1405. PROVIDE 1" CONDUIT WITH PULL STRING FOR POS DATA BOXES.
4. PROVIDE POWER CONNECTION TO JUNCTION BOX ABOVE CEILING IN THIS AREA FOR DIGITAL MENU BOARD.
5. PROVIDE RECEPTACLE AND DATA OUTLET ON THE WALL FOR PICK UP SCREEN AND RUN CIRCUIT ABOVE CEILING. REFER TO DRIVE THRU SERVICE AREA ELEVATION, SHEET E5.1 FOR ADDITIONAL INFORMATION.
6. PROVIDE RECEPTACLE AT 18" AFF FOR CARBON DIOXIDE METER. PROVIDE CAT 5 CABLE BACK TO MANAGERS OFFICE FOR REMOTE DISPLAY UNIT. COORDINATE FINAL LOCATIONS WITH ARCHITECT. COORDINATE ALL REQUIREMENTS WITH VENDOR.
7. PROVIDE BOX AND CONDUIT RUN ABOVE CEILING FOR RTU REMOTE TEST SWITCH.
8. ELECTRICAL CONTRACTOR SHALL CONFIRM WITH ARCHITECT IF CANOPY WITH HEAT TRACE IS SELECTED. IF NOT, PLEASE REMOVE THE ELECTRICAL SUPPLY PROVISION.
9. MOUNT RECEPTACLE HORIZONTAL TO ENSURE CLEARANCE WITH COUNTER TOP AND BACK SPLASH.
10. PROVIDE CONNECTION TO EVAPORATOR POWERED BY ROOF MOUNTED CONDENSER UNIT.
11. PROVIDE 60A 2-POLE 208V NON-FUSED DISCONNECT SWITCH FOR DISHWASHER WATER HEATER. MOUNT 96" ABOVE FINISH FLOOR IN ACCESSIBLE LOCATION. COORDINATE WORK WITH PLUMBING AND KITCHEN EQUIPMENT SUPPLIER.
12. CIRCUITS SHOW ARE PRE-WIRED IN UL LISTED RACEWAY WHICH IS PART OF KITCHEN EQUIPMENT AND TERMINATE IN CHASE #2 UP AT CEILING. ELECTRICAL CONTRACTOR MUST MAKE FIELD CONNECTIONS IN JUNCTION BOXES AND PROVIDE HOME RUNS FROM JUNCTION BOXES TO INDICATED CIRCUIT. WIRE 20A CIRCUIT WITH #12 WIRE AND 30A CIRCUIT WITH #10 WIRE.



2 POWER PLAN- SECOND FLOOR 1/4"=1'-0"



1 POWER PLAN- FIRST FLOOR 1/4"=1'-0"

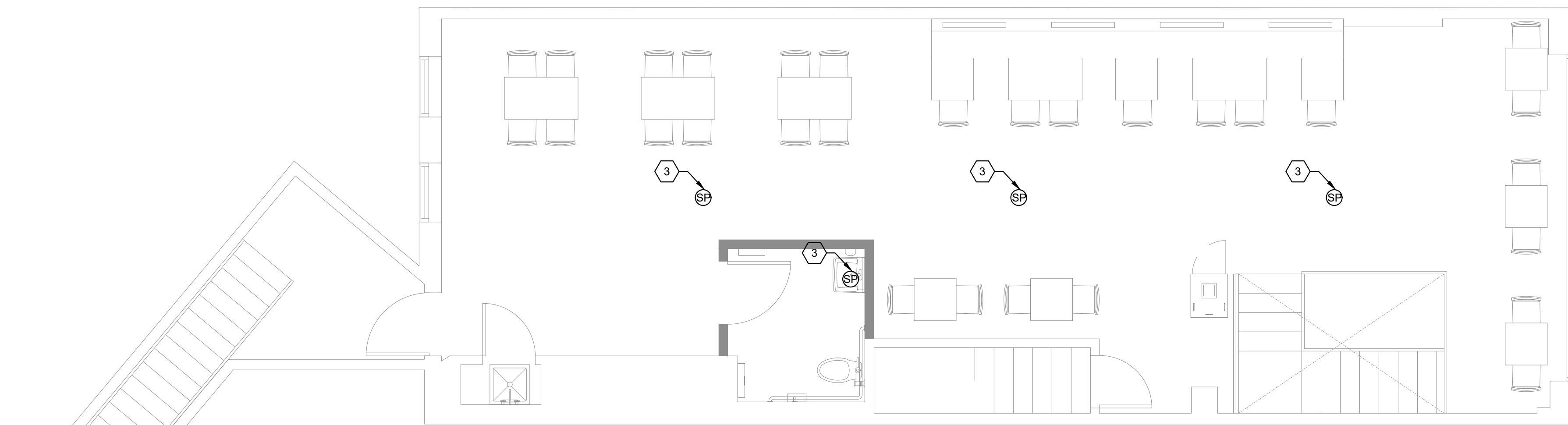
LOW VOLTAGE/IT GENERAL NOTES

- A. THE CONDUITS, JUNCTION BOXES AND OUTLETS SHOWN ARE INSTALLED BY ELECTRICAL CONTRACTOR AND ARE IN ADDITION TO THOSE INDICATED ON SHEET E-200.00. ALL ITEMS SHOWN ARE TO CLARIFY AND EMPHASIZE THE IMPORTANCE OF PROPER PLACEMENT.
- B. ALL CONDUITS SHOULD BE STEEL STUBBED OUT ABOVE THE CEILING LINE AND TERMINATED INTO A J-BOX AS NOTED AND CAPABLE OF ACCEPTING A FACEPLATE COVER.
- C. ALL J-BOXES SHOULD BE INSTALLED IN SUCH A WAY THAT THEY ARE NOT BLOCKED BY OTHER EQUIPMENT OR STRUCTURAL COMPONENTS.
- D. ALL CABLE ACCESS OPENINGS THRU S/S MUST HAVE RUBBER OR PLASTIC GROMMETS INSTALLED.
- E. TELEPHONE, DATA AND CATV CABLING SHALL BE PROVIDED BY OTHERS.
- F. PROVIDED NYLON BUSHINGS ON ALL CONDUITS.
- G. REFER TO SHEET E-100.00 FOR GENERAL ELECTRICAL NOTES.
- H. MOUNT DEVICES INSTALLED ON EQUIPMENT ON NON-REMOVABLE PANEL. COORDINATE LOCATION PRIOR TO COMMENCING ROUGH-IN WORK.
- I. HEIGHTS INDICATED FOR RECEPTACLES AND JUNCTION BOXES ARE MEASURED FROM FINISH FLOOR TO THE CENTER OF THE BOX.

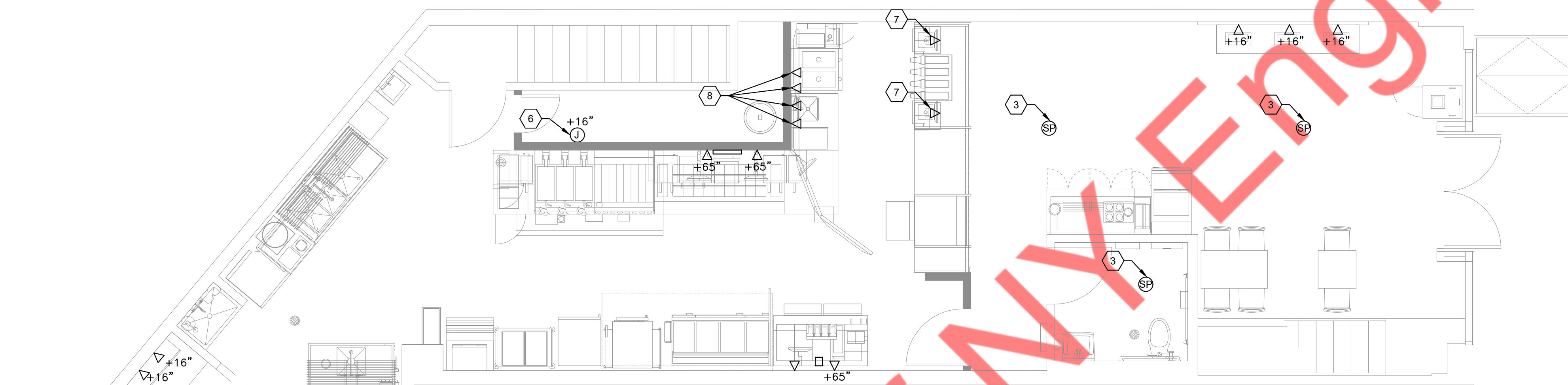
CODED NOTES:

1. VOLUME CONTROL AT 48" A.F.F. PROVIDE 3/4" CONDUIT TO JUNCTION BOX AT MUSIC SYSTEM.
2. 2"x3/4" FIRE RESISTANT PLYWOOD BACKBOARD FOR INCOMING TELEPHONE SERVICE. COORDINATE EXACT LOCATION PRIOR TO ROUGH-IN.
3. SOUND SPEAKER. REFER TO ARCHITECTURAL DRAWINGS FOR MOUNTING HEIGHT AND ORIENTATION. SPEAKERS CAN BE DAISY-CHAINED SPEAKER TO SPEAKER AND WIRED BACK TO JUNCTION BOX IN MANAGER'S OFFICE.
4. RUN (1) 3/4" CONDUIT FROM SOUND SYSTEM JUNCTION BOX IN WALL IN MANAGER'S OFFICE ABOVE CEILING TO DINING AREA (AND PATIO) FOR SPEAKERS WITH PULL STRING.
5. PROVIDE WIRING FROM TELEPHONE BOX TO DEMARCATION POINT.
6. PROVIDE CAT 5 CABLE BACK TO MANAGERS OFFICE FOR CARBON DIOXIDE METER REMOTE DISPLAY UNIT. COORDINATE FINAL LOCATIONS WITH ARCHITECT. COORDINATE ALL REQUIREMENTS WITH VENDOR.
7. FRONT COUNTER REGISTER DATA OUTLETS MOUNTED ON INSIDE OF MILLWORK. PROVIDE 1" CONDUIT WITH PULL STRING FOR POS DATA BOXES THROUGH CHASE G1405.
8. DATA OUTLETS FOR MENU BOARD. COORDINATE EXACT QUANTITY WITH MENUBOARD MANUFACTURER.

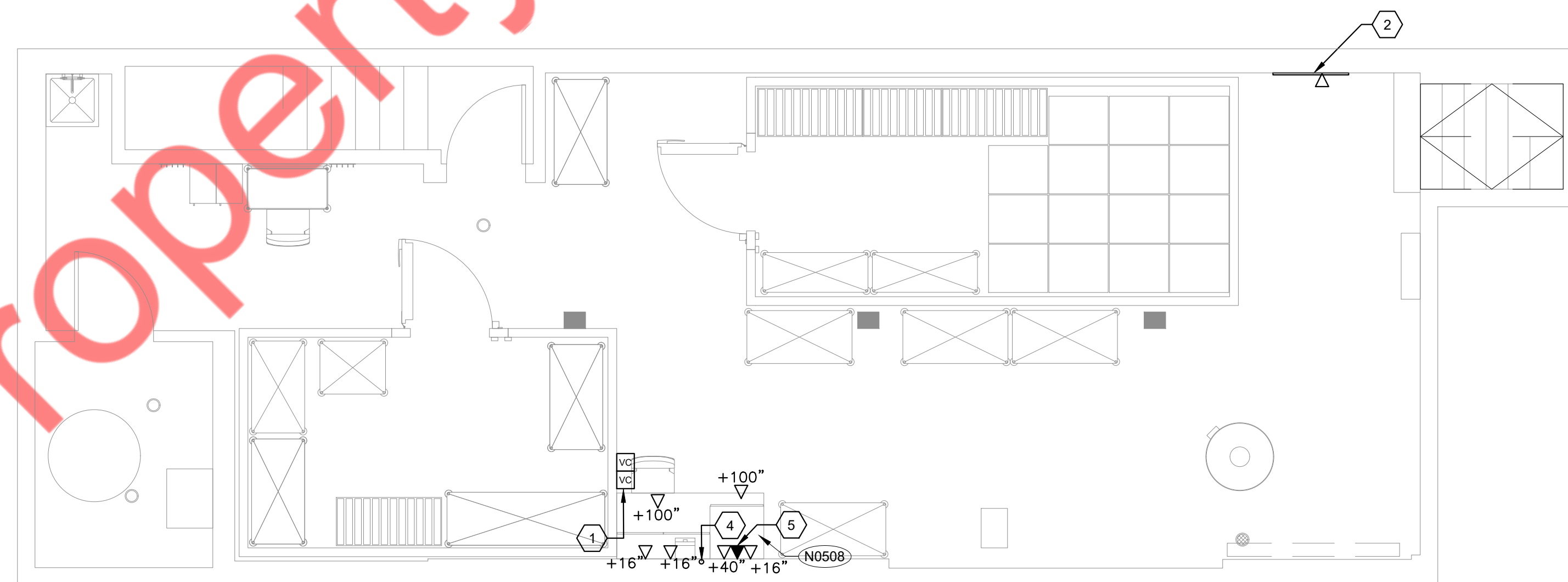
3 LOW VOLTAGE PLAN- SECOND FLOOR
1/4"=1'-0"



2 LOW VOLTAGE PLAN- FIRST FLOOR
1/4"=1'-0"



1 LOW VOLTAGE PLAN- CELLAR
1/4"=1'-0"



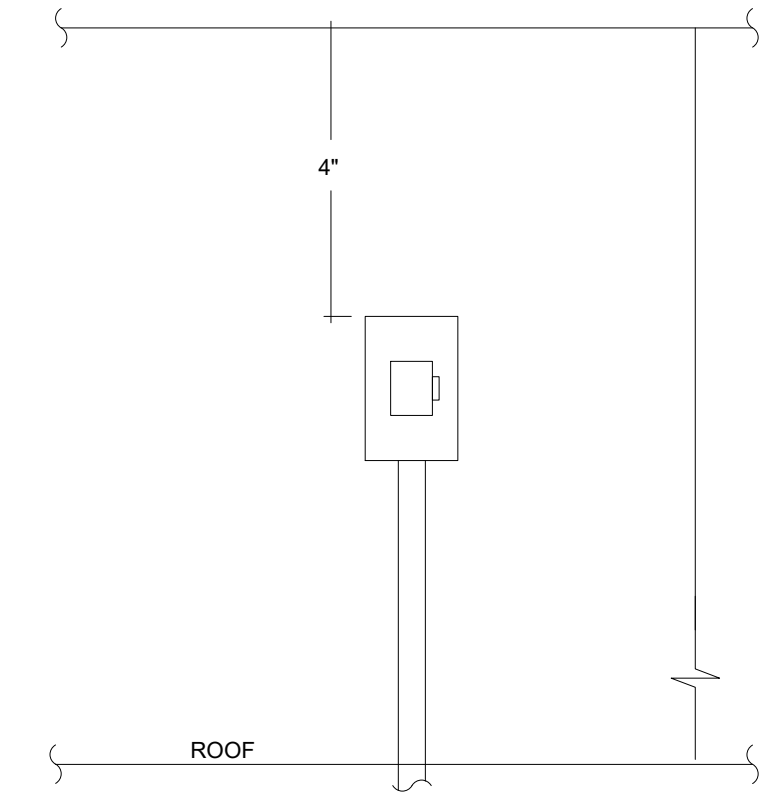
Property of NY Engineers

ROOF PLAN GENERAL NOTES

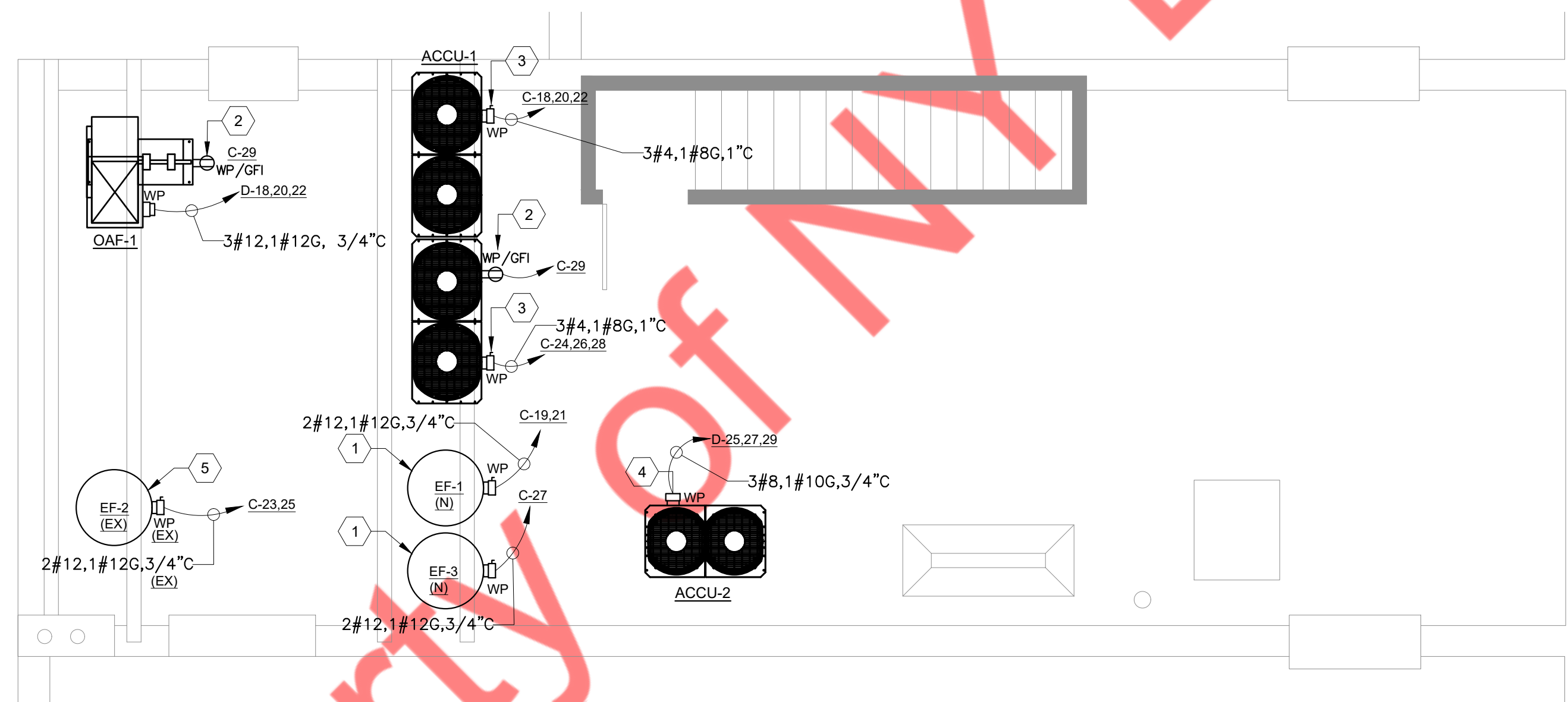
- A. REFER TO SHEET E1.1 FOR GENERAL ELECTRICAL NOTES AND SHEET E2.1 FOR ELECTRICAL LEGEND.
- B. VERIFY EXACT LOCATIONS OF HVAC AND PLUMBING EQUIPMENT, CONDUIT STUB-UPS AND POWER CONNECTIONS PRIOR TO ROUGH-IN.
- C. WIRE ROOF TOP UNIT CONTROL CIRCUIT THROUGH AUXILIARY CONTACTS IN SMOKE DETECTOR AND MAKE ALL FINAL CONNECTIONS. (TYPICAL OF ALL ROOF TOP UNITS)
- D. PROVIDE NEMA 3R DISCONNECT SWITCH IF EQUIPMENT MANUFACTURER DOES NOT PROVIDE ONE WITH EQUIPMENT. VERIFY DISCONNECT REQUIREMENTS WITH MANUFACTURER.
- E. DISCONNECTS ARE SHOWN FOR REFERENCE ONLY. ACTUAL LOCATION OF DISCONNECTS SHALL BE COORDINATED AND VERIFIED WITH EQUIPMENT MANUFACTURER AND FINAL ORIENTATION OF EQUIPMENT ONCE PLACED ON ROOF.

CODED NOTES:

- 1. PROVIDE CONNECTION TO ASSOCIATED HOOD ON SWITCH. COORDINATE ALL REQUIREMENTS WITH MECHANICAL DRAWING AND HOOD WIRING DIAGRAM PRIOR TO ROUGH-IN.
- 2. WEATHERPROOF RECEPTACLE PROVIDED WITH ROOF UNIT. PROVIDE POWER AS INDICATED.
- 3. PROVIDE 100A 208V 3P DISCONNECT SWITCH IN NEMA 3R ENCLOSURE. PROVIDE (3)#4 AND (1)#8 GROUND IN 1" CONDUIT FROM EQUIPMENT TO REMOTE UNIT. VERIFY ALL OTHER REQUIRED WIRING. COORDINATE EXACT REQUIREMENTS WITH MANUFACTURER AND MAKE ALL FINAL CONNECTIONS REQUIRED FOR PROPER OPERATION.
- 4. PROVIDE 60A 208V 3P DISCONNECT SWITCH IN NEMA 3R ENCLOSURE. PROVIDE (3)#8 AND (1)#10 GROUND IN 3/4" CONDUIT FROM EQUIPMENT TO REMOTE UNIT. VERIFY ALL OTHER REQUIRED WIRING. COORDINATE EXACT REQUIREMENTS WITH MANUFACTURER AND MAKE ALL FINAL CONNECTIONS REQUIRED FOR PROPER OPERATION.
- 5. EXISTING EXHAUST FAN (EF-2) SHALL REMAIN CONNECTED TO THE RESPECTIVE EXISTING ELECTRICAL PANEL. E.C. SHALL VERIFY EXACT CIRCUIT NUMBER AND PANEL TO WHICH THESE ARE CONNECTED.



PHOTOCELL CONTROL MOUNTING DETAIL 2
NOT TO SCALE



SECURITY LEGEND

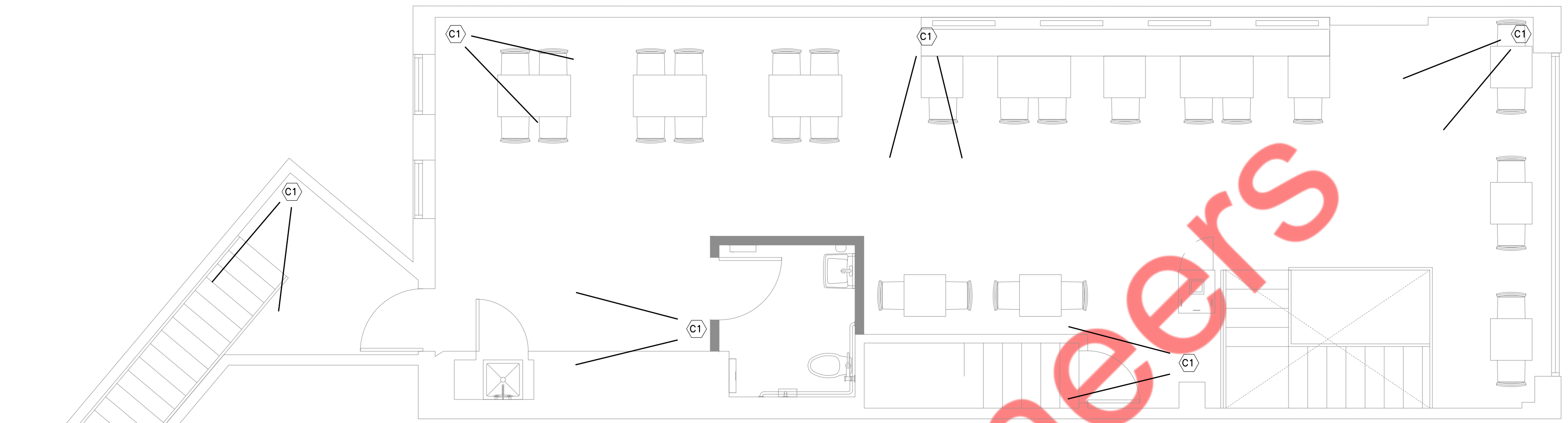
MARK	ITEM	MOUNTING NOTES
DC	DOOR CONTACT	IN FRAME HEAD ON LATCH SIDE OF OPENING
MD	MOTION DETECTOR (360 DEGREE CEILING MOUNTED)	CEILING MOUNT
WP	WALK-IN PANIC BUTTON	WALL MOUNT 12" TO 18" A.F.F.
KP	KEYPAD	WALL MOUNT 65" A.F.F.
CP	CONTROL PANEL	WALL MOUNT ABOVE DOOR
SS	SIREN / STROBE	SIREN JUST ABOVE CEILING STROBE SURFACE MOUNTED ON CEILING
OS	OFFICE SAFE	SEE SAFE INSTRUCTION
DB	DROPBOX	BOLTED DOWN UNDER REGISTER
CX	CAMERA	WALL MOUNT 8" BELOW CEILING -OR- CEILING MOUNT
SM	SECURITY MONITOR	POST MOUNTED TIGHT TO UNDERSIDE OF STRUCTURE ADDITIONAL 120 VAC POWER REQUIRED
DR	DVR	MOUNTED INSIDE UPPER CABINET IN MANAGERS OFFICE. ADDITIONAL 120 VAC AC POWER REQUIRED
AS	SMART SAFE	BOLTED DOWN UNDER REGISTER(S)

SECURITY ITEMS

CAMERAL LOCATION	LEVEL RECOMMENDED	CAMERAL LOCATION	LEVEL RECOMMENDED
C1	DINING ROOM	LEVEL 1 THRU 3	
C2	ORDER POINT/SERVICE	LEVEL 1 THRU 3	
C3	BACK DOOR	LEVEL 1 THRU 3	
C4	OFFICE	LEVEL 1 THRU 3	
C5	PATIO	LEVEL 1 THRU 3	
C6	KITCHEN PREP	LEVEL 1 THRU 3	

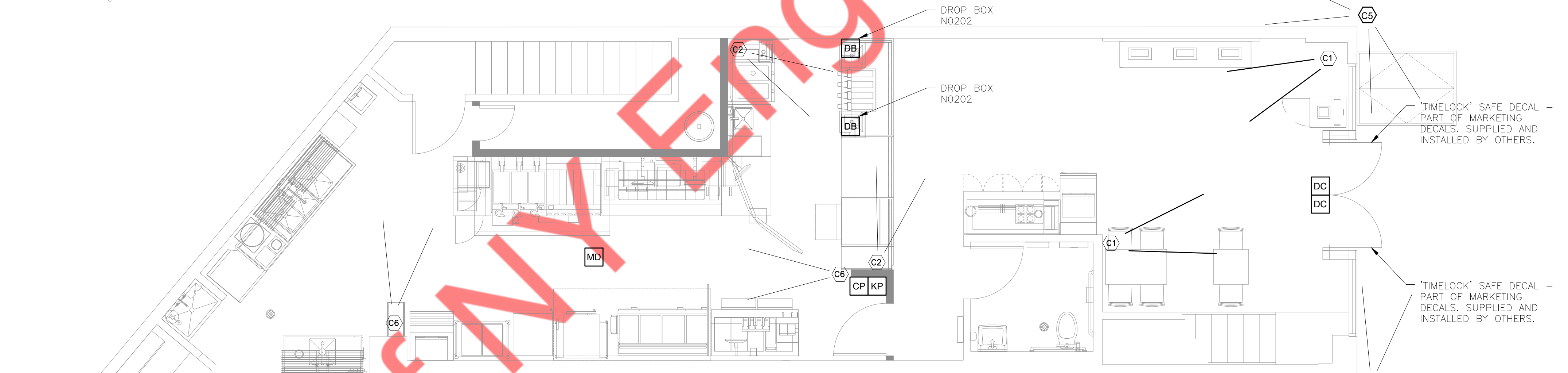
SAFE NOTES

- A. THE SAFE IS PROVIDED WITH A 3/4" DIAMETER ANCHOR HOLE IN THE BOTTOM. ALONG WITH A LEAD SHIELD ANCHOR ASSEMBLY FOR FIELD INSTALLATION.
- B. SAFE ANCHORING TO BE DONE BY LOCKSMITH.
- C. THE SAFE IS TO BE ANCHORED TO THE FLOOR TO MAXIMIZE SECURITY.
- D. FOR PROPER INSTALLATION FOLLOW STEPS BELOW:(ANCHOR ASSEMBLY 1/2-13 THREAD)
 1. MARK THE AREA DESIRED FOR ANCHORING
 2. DRILL INTO FLOOR WITH A 1" DIAMETER MASONRY BIT 1" DEEP
 3. DIS-ASSEMBLE THE ANCHORING BOLT/WASHER FROM THE LEAD SHIELD ASSEMBLY
 4. TAP THE LEAD SHIELD ANCHOR IN THE FLOOR FLUSH WITH THE SURFACE
 5. LOCATE AND ALIGN THE HOLE IN THE BOTTOM OF THE SAFE WITH THE LEAD SHIELD ANCHOR IN THE FLOOR.
 6. INSTALL THE FLAT WASHER/BOLT THROUGH THE BOTTOM OF THE SAFE AND TIGHTEN SECURELY. BY DOING SO, THE SLEEVE ON THE ANCHOR ASSEMBLY WILL SWELL, WEDGING THE ANCHOR TO THE FLOOR.



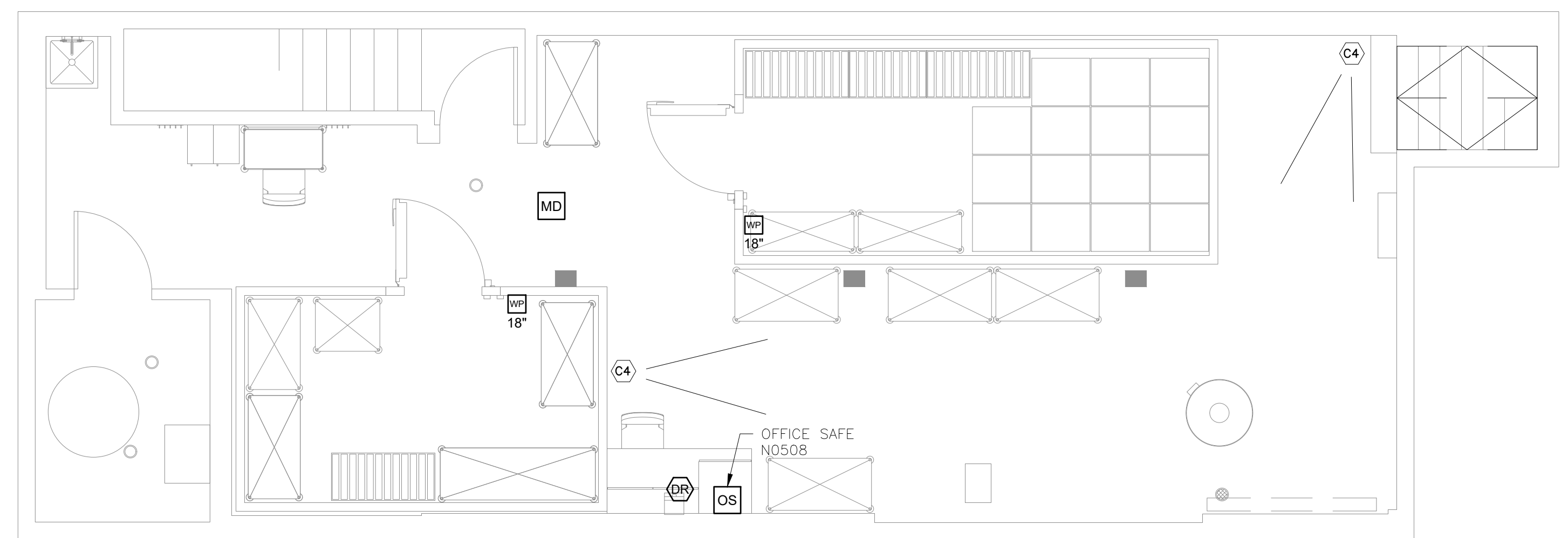
3 SECURITY PLAN- SECOND FLOOR

1/4"=1'-0"



2 SECURITY PLAN- FIRST FLOOR

1/4"=1'-0"



1 SECURITY PLAN - CELLAR

1/4"=1'-0"

Property of NY Engineers