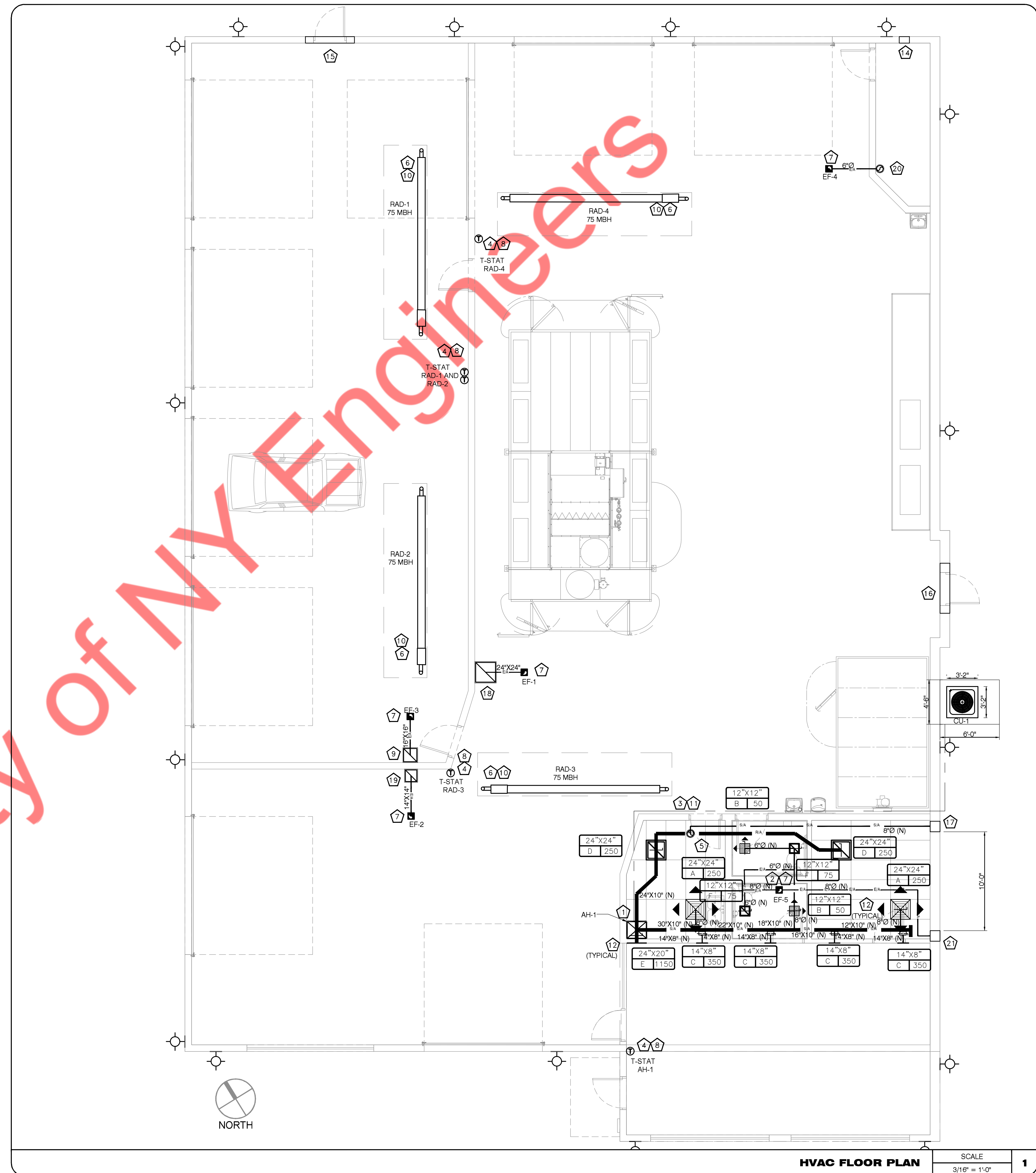


MECHANICAL PLAN NOTES

1. PROVIDE DUCTED SMOKE DETECTOR IN RETURN OF AH-1.
2. MANUFACTURER SUPPLIED RESTROOM EXHAUST FAN LOUVERED BRICK VENT. COORDINATE LOCATION AND SIZE OF BRICK VENT WITH FLOOR PLAN, BUILDING STRUCTURE AND GENERAL CONTRACTOR PRIOR TO ORDERING AND INSTALLATION. VENT SHALL BE PRIMED FOR FIELD PAINTING.
3. PROVIDE REFRIGERANT LINE SET, LIQUID LINE MOISTURE INDICATING SIGHT GLASS AND LIQUID LINE FILTER-DRYER. ALL REFRIGERANT LINES SIZING, ROUTING AND ACCESSORIES SHALL BE INSTALLED AND LOCATED STRICTLY PER MANUFACTURERS INSTALLATION INSTRUCTIONS. FAILURE TO INSTALL PIPING AS DESCRIBED MAY RESULT IN CONTRACTOR REPLACING REFRIGERANT PIPING AT NO ADDITIONAL COST TO OWNER. COORDINATE ROUTING OF REFRIGERANT PIPING WITH OTHER TRADES PRIOR TO INSTALLATION.
4. THERMOSTAT SUPPLIED BY MANUFACTURER WITH EACH PIECE OF EQUIPMENT. THERMOSTAT TO BE INSTALLED ON AN INSULATED SUBBASE PER MANUFACTURERS INSTALLATION INSTRUCTIONS AND MOUNTED SO THAT THE HIGHEST OPERABLE CONTROL IS NOT MORE THAN 48" AFF.
5. OUTSIDE AIR DUCT SHALL BE WRAPPED WITH MINIMUM 1-1/2" DUCT WRAP. FIELD ROUTE AS REQUIRED FROM RETURN AIR DUCT TO OUTSIDE AIR LOUVER. COORDINATE ROUTING AND MOUNTING HEIGHT OF WALL LOUVER WITH STRUCTURE AND ARCHITECTURAL ELEVATIONS PRIOR TO FABRICATION AND INSTALLATION.
6. ROUTE 4" Ø FLUE SEPARATELY THRU ROOF FOR EACH RADIANT HEATER. REFER TO MANUFACTURERS INSTALLATION INSTRUCTIONS AND DETAIL ON SHEET M3 FOR FURTHER INFORMATION. COORDINATE WITH ARCHITECTURAL ROOF PLAN.
7. ALL EXHAUST FANS SHALL BE ROOF MOUNTED EXCEPT TOILET EXHAUST FAN WHICH SHOULD BE INLINE.
8. THE CONTRACTOR SHALL FURNISH A MANUFACTURER SPECIFIED (OR EQUAL) THERMOSTAT WITH INSULATED SUBBASE. THERMOSTAT TO BE 7 DAY PROGRAMMABLE WITH 4 SETBACK PERIODS PER DAY. THERMOSTAT TO BE INSTALLED PER MANUFACTURERS INSTALLATION INSTRUCTIONS. MOUNT THERMOSTAT SO THAT THE HIGHEST OPERABLE CONTROL IS NOT MORE THAN 48" AFF.
9. DROP 16"x16" EXHAUST DUCT DOWN IN LOCATION SHOWN. INSTALL DUCTWORK TIGHT TO WALL AND TRANSITION AS REQUIRED TO FAN. TERMINATE AT 3' A.F.F.. COVER OPENING WITH 1"x1" WIRE MESH.
10. MOUNT GAS FIRED RADIANT HEATER TO STRUCTURE PER MANUFACTURERS INSTALLATION INSTRUCTIONS. REFER TO DETAIL ON SHEET M3 AND SERVICE BAY SECTION ON ARCHITECTURAL DRAWINGS FOR FURTHER INFORMATION.
11. ROUTE REFRIGERANT PIPE AS HIGH AS POSSIBLE AND TIGHT TO WALL. COORDINATE ROUTING WITH ALL OTHER TRADES.
12. COORDINATE MOUNTING HEIGHT OF SUPPLY AIR GRILLES INTO SALES WALL WITH INSTALLED HEIGHT OF DUCTWORK WITH STRUCTURE AND ARCHITECTURAL ELEVATIONS. BOTTOM OF GRILLE SHALL BE MOUNTED NO LESS THAN 9'-0" AFF.
13. DROP EXHAUST DUCT DOWN IN LOCATION SHOWN. INSTALL DUCTWORK TIGHT TO WALL AND STRUCTURE. TRANSITION AS REQUIRED FROM FAN ON ROOF. TERMINATE DUCTWORK AT 12" A.F.F. AND COVER WITH 1"x1" WIRE MESH.
14. 12x12 OUTDOOR AIR LOUVER EQUAL TO RUSKIN ELC445D WITH 0.59 SQFT FREE AREA. PROVIDE WITH 12" FIELD SUPPLIED SUPPLIED PLENUM AND BIRDSCREEN. DRAINABLE COMBINATION LOUVER WITH 120 VOLT MOTORIZED DAMPER INTERLOCKED WITH EF-4.
15. 60x24 OUTDOOR AIR LOUVER EQUAL TO RUSKIN ELC445D WITH 2.875 SQFT FREE AREA. PROVIDE WITH 12" FIELD SUPPLIED SUPPLIED PLENUM AND BIRDSCREEN. DRAINABLE COMBINATION LOUVER WITH 120 VOLT MOTORIZED DAMPER INTERLOCKED WITH EF-3.
16. 54x36 OUTDOOR AIR LOUVER EQUAL TO RUSKIN ELC445D WITH 4.71 SQFT FREE AREA. PROVIDE WITH 12" FIELD SUPPLIED SUPPLIED PLENUM AND BIRDSCREEN. DRAINABLE COMBINATION LOUVER WITH 120 VOLT MOTORIZED DAMPER INTERLOCKED WITH EF-1.
17. 12x16 OUTDOOR AIR LOUVER EQUAL TO RUSKIN ELC445D WITH 0.42 SQFT FREE AREA. PROVIDE WITH 12" FIELD SUPPLIED SUPPLIED PLENUM AND BIRDSCREEN. DRAINABLE COMBINATION LOUVER WITH 120 VOLT MOTORIZED DAMPER INTERLOCKED WITH AH-1.
18. DROP 24"x24" EXHAUST DUCT DOWN IN LOCATION SHOWN. INSTALL DUCTWORK TIGHT TO WALL AND TRANSITION AS REQUIRED TO FAN. TERMINATE AT 3' A.F.F.. COVER OPENING WITH 1"x1" WIRE MESH.
19. DROP 14"x14" EXHAUST DUCT DOWN IN LOCATION SHOWN. INSTALL DUCTWORK TIGHT TO WALL AND TRANSITION AS REQUIRED TO FAN. TERMINATE AT 3' A.F.F.. COVER OPENING WITH 1"x1" WIRE MESH.
20. DROP EXHAUST DUCT DOWN IN LOCATION SHOWN. INSTALL DUCTWORK TIGHT TO WALL AND TRANSITION AS REQUIRED TO FAN. TERMINATE AT 3' A.F.F.. COVER OPENING WITH 1"x1" WIRE MESH.
21. MANUFACTURER SUPPLIED RESTROOM INLINE EXHAUST FAN. COORDINATE LOCATION AND SIZE OF VENT WITH FLOOR PLAN, BUILDING STRUCTURE AND GENERAL CONTRACTOR PRIOR TO ORDERING AND INSTALLATION. VENT SHALL BE PRIMED FOR FIELD PAINTING.



HVAC FLOOR PLAN

SCALE
3/16" = 1'-0"

