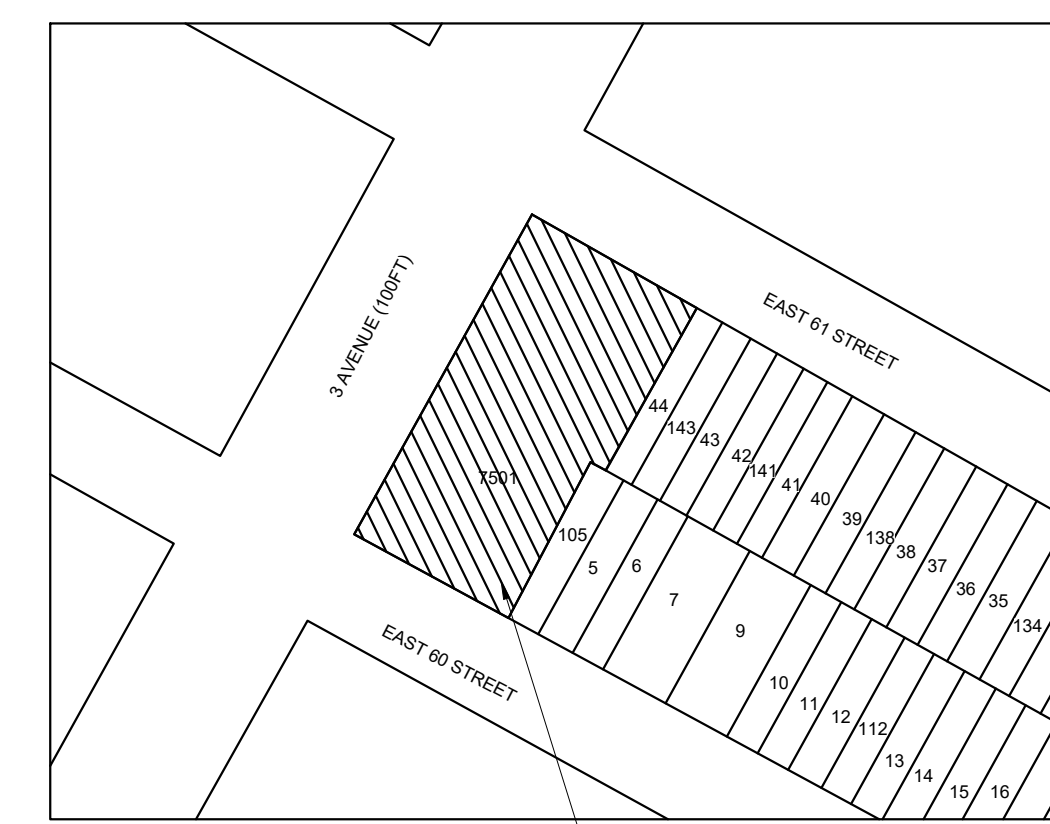


BUILDING DATA									
PROJECT DESCRIPTION		BUILDING OCCUPANCY			BUILDING DESCRIPTION			FIRE ALARM SYSTEM FEATURES	
NEW BUILDING		ASSEMBLY GROUP A (A1,A2,A3,A4 AND A5)		RESIDENTIAL GROUP R (R1,R2 AND R3)	43	TOTAL NUMBER OF LEVELS	ATRIUM	STAIR PRESSURIZATION	NON-VOICE EVACUATION
FIRE ALARM SYSTEM UPGRADE	X	ASSEMBLY GROUP A-3 (FITNESS CENTRE)		STORAGE GROUP S (S1 AND S2)	43	ABOVE GROUND LEVELS	GRND FL.	FIRE DEPARTMENT ACCESS	VOICE EVACUATION
LIFE SAFETY SYSTEM UPGRADE		EDUCATIONAL GROUP E		UTILITY AND MISCELLANEOUS GROUP U	0	BELOW GROUND LEVELS	X	FULLY SPRINKLERED	PARTIAL/SELECTIVE EVACUATION
X RENOVATION		FACTORY INDUSTRIAL GROUP F (F1 AND F2)		OTHER:	2	NUMBER OF ELEVATOR BANKS		PARTIALLY SPRINKLERED	X FIRE PUMP
EMERGENCY REPAIR		HIGH-HAZARD GROUP H (H1,H2,H3,H4 AND H5)			2	NUMBER OF EGRESS STAIRS		NON-SPRINKLERED	OTHER:
TENANT ADDITION		INSTITUTIONAL GROUP I (I1,I2 AND I3)				LOW RISE BUILDING		PRE-ACTION SPRINKLER	OTHER:
OTHER:		MERCANTILE GROUP M			X	SUPER HIGH RISE BUILDING			FIRE FIGHTER'S TELEPHONE SYSTEM



- 1011 3RD AVE, NEW YORK, NY 10065
- BLOCK: 1415
  - LOT: 7501
  - ZONING: C1-9
  - MAP: 6C
  - OCC. CLASS: MIXED RESIDENTIAL AND COMMERCIAL BUILDING

LEGEND:	NEW
	EXISTING
ABBREVIATION:	(N) - NEW
	(E) - EXISTING

**FIRE ALARM I/O MATRIX**

SYSTEM INPUTS INITIATING DEVICES	SYSTEM OUTPUTS INDICATING/CONTROLLED DEVICES												
	A	B	C	D	E	F	G	H	I	J	K	L	M
1 MANUAL PULL STATION													
2 WATERFLOW SWITCH													
3 AREA SMOKE DETECTOR													
4 SPRINKLER CONTROL VALVE/TAMPER SWITCH													
5 FIRE DRILL KEY SWITCH													
6 FIRE ALARM AC POWER FAILURE													
7 FIRE ALARM SYSTEM LOW BATTERY													
8 OPEN CIRCUIT													
9 GROUND CIRCUIT													
10 NOTIFICATION APPLIANCE CIRCUIT SHORT													
11 BASE BUILDING'S EXISTING FACP													
12 ELEVATOR LOBBY DETECTOR													
13 TOP OF SHAFT HEAT DETECTOR													

FIRE ALARM SYMBOL LIST			
SYMBOL	DESCRIPTION	SYMBOL	DESCRIPTION
FD	STROBE LIGHT DEVICE, WALL MOUNTED (80" AFF)	FD	FIRE ALARM MANUAL PULL STATION, WALL MOUNTED (48" AFF)
HS	WALL MOUNTED HORN/STROBE COMBINATION DEVICE (80" AFF)	TS	TAMPER SWITCH
S	CEILING MOUNTED AREA SMOKE DETECTOR	WF	WATER FLOW SWITCH
FACP	FIRE ALARM CONTROL PANEL	MM	MONITOR MODULE
SBP	STROBE BOOSTER PANEL	FSD	FIRE SMOKE DAMPER, REFER TO MECH. PLANS FOR FURTHER INFORMATION.
FDS	FUSED DISCONNECT SWITCH, REFER TO RISER DIAGRAM FOR FURTHER INFORMATION.	---	SOLID THICK LINE INDICATES NEW DEVICE OR WIRING
D	DUCT MOUNTED SMOKE DETECTOR	---	DOTTED LINE INDICATES EXISTING DEVICE OR WIRING
R	FIRE ALARM RELAY	DMM	DUAL MONITOR MODULE/ADDRESSABLE DUAL INPUT MODULE
H	HEAT DETECTOR		

ABBREVIATIONS			
AFF	ABOVE FINISHED FLOOR	HC	HUNG CEILING
C	CONDUIT	HC	HUNG CEILING
DGP	DATA GATHERING PANEL	NE	NEW TO REPLACE EXISTING
E	EXISTING	NTS	NOT TO SCALE
EL	EXISTING TO BE LOWERED	R	REMOVE
ELV	ELEVATOR LOBBY	RCU	REMOTE COMPUTER UNIT
EMT	ELECTRIC METALLIC TUBING	RE	RELOCATED EXISTING
ER	EXISTING TO BE RELOCATED	RGS	RIGID GALVANIZED STEEL
FA	FIRE ALARM	RP	RELOCATED POSITION
FCS	FIRE COMMAND STATION	UON	UNLESS OTHERWISE NOTED
FDS	FUSED DISCONNECT SWITCH	W	WIRE
G	GROUND		

**TYPE OF DESIGN:**  
INSTALLATION OF NEW MANUAL, AUTOMATIC SMOKE DETECTION, HEAT DETECTION, NOTIFICATION SYSTEM, A SPRINKLER ALARM SYSTEM (FAS) AND NEW WATER FLOW AND TAMPER SWITCH. NO CHANGE IN USE OCCUPANCY OR EGRESS.

**APPLICABLE CODES:**

- NYC BUILDING CODE 2022 ADOPTS WITH AMENDMENTS INTERNATIONAL BUILDING CODE 2015 (IBC 2015)
- NEW YORK CITY 2011 ELECTRICAL CODE (LOCAL LAW 39 OF 2011)

DRAWINGS LIST	
FA-001.00	FIRE ALARM NOTES, BUILDING DATA, SYMBOL LIST, ABBREVIATIONS, PLOT PLAN, I/O MATRIX & RISER DIAGRAM
FA-100.00	SUB CELLAR (SC1) AND CELLAR FIRE ALARM PLAN

**FIRE ALARM NOTES:**

- ALL EQUIPMENT AND WIRING INDICATED ON THESE PLANS IS NEW (U.O.N.).
- PROVIDE WIRING AS REQUIRED BETWEEN ALL DEVICES AND EQUIPMENT AS REQUIRED TO PERFORM FIRE ALARM SYSTEM FUNCTIONS.
- WIRING FOR FIRE ALARM DEVICES IN FINISHED SPACES WITHOUT HUNG CEILING SHALL BE INSTALLED IN EMT CONDUIT.
- ALL STROBES AND HORN/STROBES SHALL BE FLUSH WALL MOUNTED FINISH BY ARCHITECT, APPROVED FOR USE IN NYC.
- ALL DUCT SMOKE DETECTORS INSTALLED IN HUNG CEILING AREA AND IN OUT OF SIGHT AREA SHALL HAVE REMOTELY INSTALLED STATUS INDICATOR LAMPS. COORDINATE EXACT LOCATION WITH ARCHITECT AND GENERAL CONTRACTOR.
- FOR WALL MOUNTED F.A. DEVICES PROVIDE 3/4" CONDUIT TERMINATED IN NEAREST ACCESSIBLE CEILING.
- WIRING FOR FIRE ALARM DEVICES IN UNFINISHED SPACES SHALL BE INSTALLED IN RGS CONDUIT UP TO 8'-0" AFF AND THEN IN EMT CONDUIT ABOVE 8'-0" AFF.
- FOR LOCATIONS AND QUANTITIES OF DEVICES REFER TO FIRE ALARM FLOOR PLANS. WHERE THERE ARE DISCREPANCIES BETWEEN THE PLANS AND THE RISER DIAGRAM, THE GREATER QUANTITY SHALL BE USED.
- CONTRACTOR SHALL VERIFY ALL WIRING WITH FIRE ALARM VENDOR AND OBTAIN WIRING DIAGRAMS BEFORE PROCEEDING WITH THE START OF ANY WORK.
- ALL WIRING SHALL BE IN ACCORDANCE WITH THE NYC ELECTRICAL CODE 780.179(D).
- PROVIDE FAN SHUT DOWN CAPABILITY FOR FANS WITH A RATING LARGER THAN 2,000 CFM. SHUT DOWN SHALL BE ACCOMPLISHED BY ONE OR MORE OUTLET CONTROL POINTS FROM THE FIRE ALARM SYSTEM TO RELAYS FOR SHUTDOWN. PROVIDE CONTROL AND MONITORING FOR ALL RELAYS. PROVIDE POWER, CONTROL RELAYS, MONITORING AND WIRING FOR ALL FIRESMOKE DAMPERS.
- DUCT DETECTORS SHALL BE FURNISHED AND INSTALLED BY THE ELECTRICAL CONTRACTOR ALONG WITH FURNISHING OF THE SAMPLING TUBES. DUCTWORK MODIFICATIONS AND INSTALLATION OF SAMPLING TUBES SHALL BE BY THE MECHANICAL CONTRACTOR. FOR FANS RATED LARGER THAN 2,000 CFM PROVIDE DUCT DETECTORS IN SUPPLY AND RETURN DUCTWORK.
- PROVIDE ALL REQUIRED EXPANSION PANELS, PC BOARDS, POWER SUPPLIES, BATTERIES, FUSE COUTOUTS AND BRANCH CIRCUITS, ETC. FOR A COMPLETE AND OPERATIONAL FIRE ALARM SYSTEM.
- STROBES AND HORNS SHALL BE WIRED ON ALTERNATING A-B CIRCUITING IN ALL AREAS, AS INDICATED ON THE RISER DIAGRAM.
- CONTRACTOR SHALL PERFORM ALL NYC BUILDING DEPT. FILINGS AND OBTAIN ALL APPROVALS. CONTRACTOR SHALL OBTAIN ALL REQUIRED SIGNED & SEALED NYC BUILDING DEPT. FORMS AND ALL REQUIRED SETS OF DRAWINGS FROM ENGINEER OF RECORD AND BUILDING DEPT. EXPEDITOR.
- UPON COMPLETION OF INSTALLATION THE SYSTEM SHALL BE 100% PRE-TESTED BY THE FIRE ALARM VENDOR AND THE LICENSED ELECTRICAL CONTRACTOR PRIOR TO FDNY INSPECTION.
- CONTRACTOR SHALL SUBMIT TO THE ENGINEER A MARKUP OF FA DRAWINGS INDICATING "AS-BUILT" CONDITIONS FOR ENGINEER'S REFERENCE. IN PREPARING "AS-BUILT" DRAWINGS FOR FILING, CONTRACTOR SHALL SIGN "AS-BUILT" STATING A FUNCTIONAL TEST HAS BEEN CONDUCTED OF THE FIRE ALARM SYSTEM AND THE SYSTEM OPERATES AS DESIGNED AND IN ACCORDANCE WITH THE INPUT/OUTPUT PROGRAMMING MATRIX IN ACCORDANCE WITH 3-RCNY & 105-01.

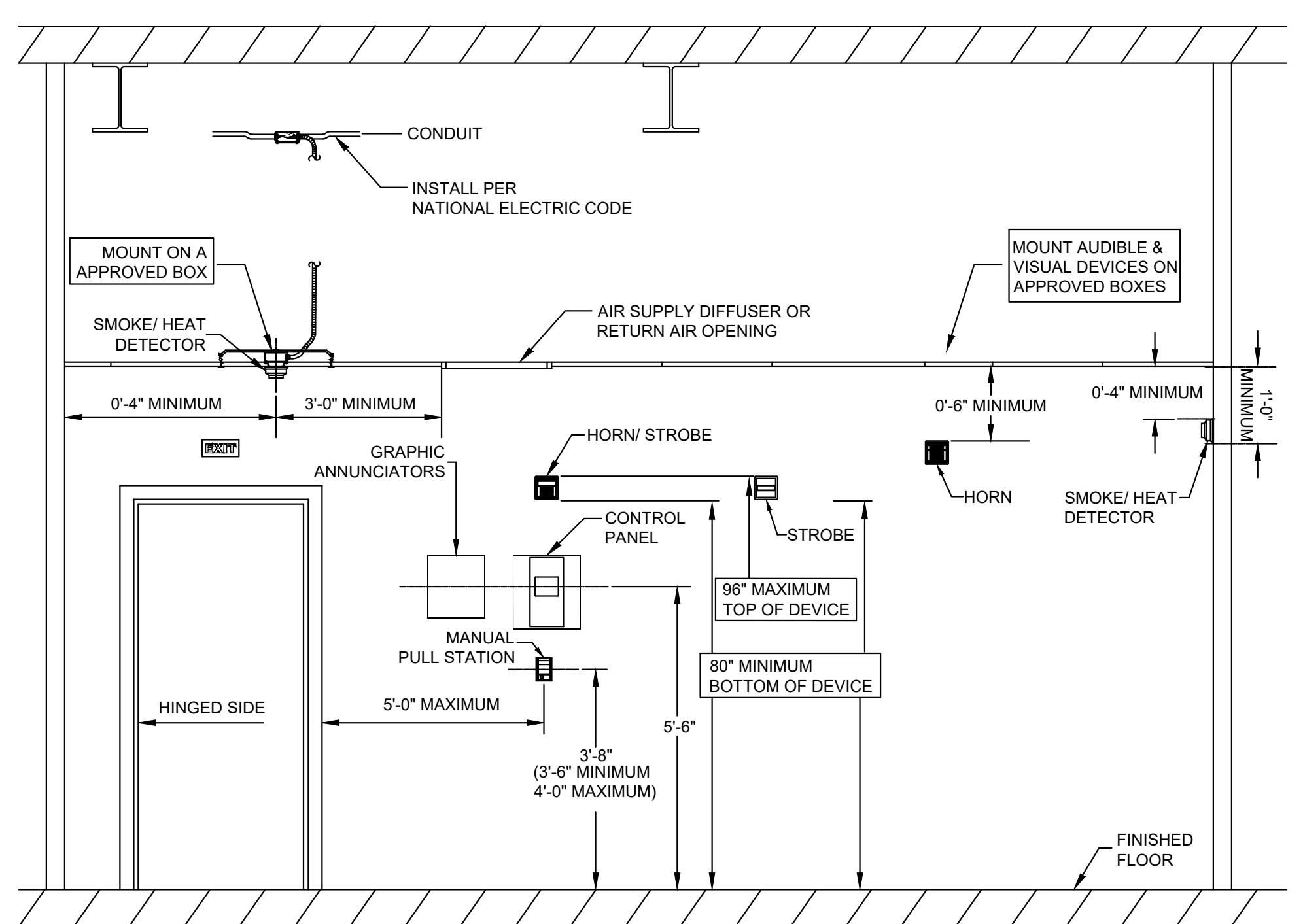
CONSULTANTS (ENGINEER):  
**NY ENGINEERS**  
NEARBY ENGINEERS  
382 NE 191ST STREET  
SUITE 49674, MIAMI,  
FL 33179  
PH-914.257.3455  
WWW.NY-ENGINEERS.COM

ARCHITECT/ENGINEER SEAL:  
  
I HEREBY CERTIFY THAT THESE DOCUMENTS WERE PREPARED OR APPROVED BY ME, AND THAT I AM DULY LICENSED PROFESSIONAL ENGINEER UNDER THE LAWS OF THE STATE OF NEW YORK. LICENSE NO. 086805, EXPIRATION DATE: 07/31/2026

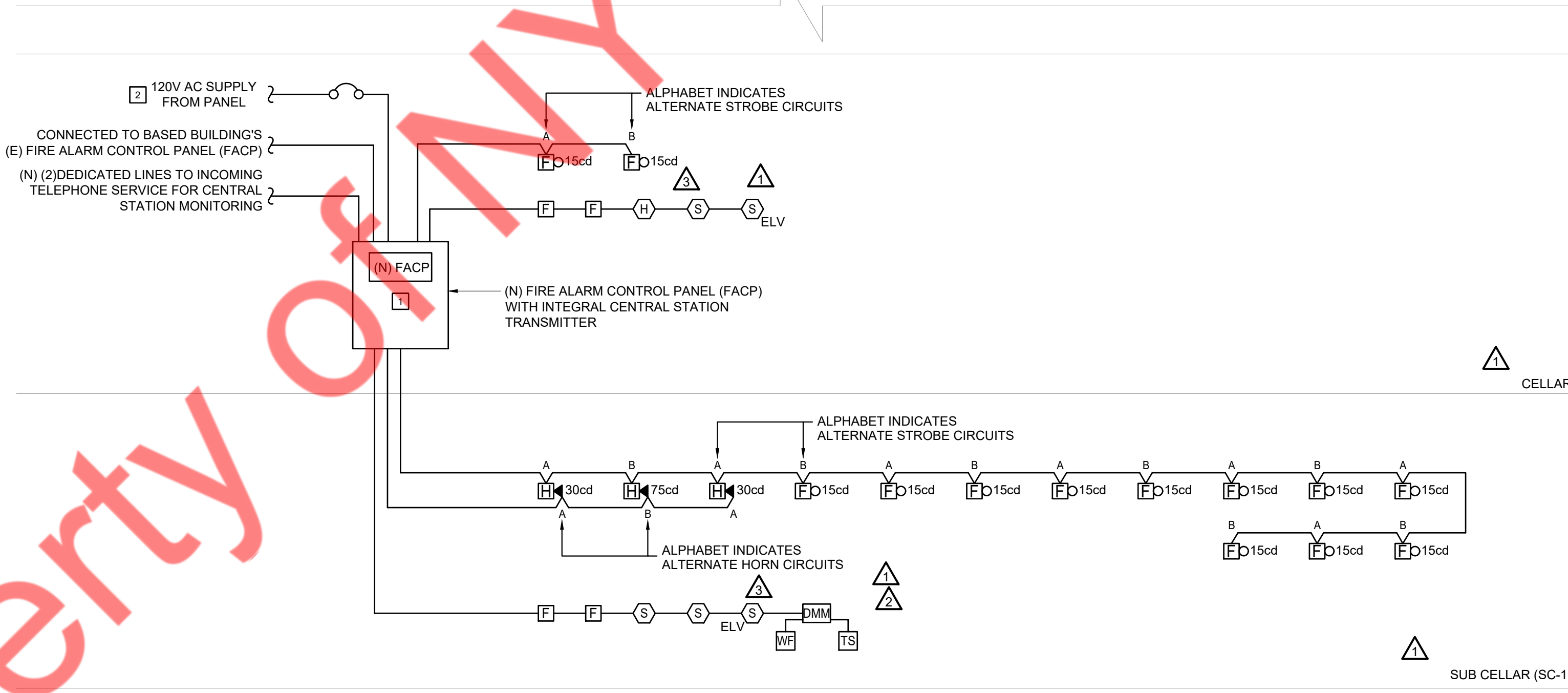
CONTRACTOR'S NOTES:  
WRITTEN DIMENSIONS HOLD PREFERENCE OVER SCALED DIMENSIONS. DO NOT SCALE THE DRAWINGS. THE CONTRACTORS MUST VISIT JOB SITE TO VERIFY ALL EXISTING CONDITIONS AND DIMENSIONS BEFORE SUBMITTING BIDS. REPORT ANY DISCREPANCIES OF ANY CONDITIONS WHICH MAY INTERFERE WITH THE PROPER EXECUTION OF THE CONTRACT TO THE TENANT'S REPRESENTATIVE. REPORT DISCREPANCIES DURING BIDDING PROCESS AND BEFORE START OF CONSTRUCTION. CHANGE ORDERS NEED TO BE APPROVED BY THE CONSTRUCTION MANAGER FOR ISSUES ARISING FROM THE FIELD CONDITIONS OR CONFLICTS BETWEEN THE PLANS AND THE EXISTING CONDITIONS PRIOR TO THE COMMENCEMENT OF WORK.

DATE	ISSUE
03/28/2025	PERMIT SET
06/18/2025	FDNY COMMENTS
07/14/2025	FDNY COMMENTS
07/31/2025	FDNY COMMENTS
08/12/2025	FDNY COMMENTS

**FIRE ALARM DEVICES TYPICAL MOUNTING HEIGHT:**



**FIRE ALARM SYSTEM RISER DIAGRAM**



**FIRE ALARM RISER KEY NOTES:**

- FIRE ALARM CONTRACTOR SHALL COORDINATE THE EXACT LOCATION OF NEW FIRE ALARM CONTROL PANEL (FACP) IN FIELD ASSOCIATED TO PROJECT SPACE. IT SHALL BE CONNECTED TO BASE BUILDING'S EXISTING FIRE ALARM CONTROL PANEL (FACP). CONTRACTOR SHALL COORDINATE THE EXACT LOCATION AND OPERABLE CONDITION IN FIELD IN COORDINATION WITH ARCHITECT/OWNER. BASE BID ACCORDINGLY.
- THE CIRCUIT BREAKER FEEDING THE FACP SHALL BE IDENTIFIED RED WITH CIRCUIT BREAKER LOCK INSTALLED.

**FIRE ALARM RISER GENERAL NOTES:**

- ALL COMPONENTS REQUIRED TO MAKE SYSTEM WORKABLE SHALL BE INCLUDED IN BID PRICE.
- EACH FA RELAY SHALL HAVE MINIMUM OF THREE SETS OF 2 CONTACT 10A RATED @ 120V (TYPICAL).
- ALL DUCT SMOKE DETECTORS INSTALLED IN HUNG CEILING AREA AND IN OUT OF SIGHT AREA SHALL HAVE REMOTELY INSTALLED STATUS INDICATOR LAMPS. COORDINATE EXACT LOCATION WITH ARCHITECT AND GENERAL CONTRACTOR.
- FOR WALL MOUNTED F.A. DEVICES PROVIDE 3/4" CONDUIT TERMINATED IN NEAREST ACCESSIBLE CEILING.
- ALL FIRE ALARM WIRING SHALL BE INSTALLED IN CONDUIT WHERE REQUIRED BY NYC ELECTRICAL CODE 780.131.
- THIS RISER DIAGRAM IS A SCHEMATIC REPRESENTATION OF THE FIRE ALARM SYSTEM. REFER TO FLOOR PLANS FOR EXACT QUANTITY OF DEVICES.
- ALL FIRE ALARM CONDUITS SHALL BE MINIMUM 3/2".
- ALL FIRE ALARM CIRCUITS SHALL BE WIRED NFPA STYLE 4Y/B (CLASS B) WITH THE EXCEPTION OF THE NETWORK CIRCUIT WHICH SHALL BE NFPA STYLE 7 (CLASS A WITH ISOLATION). DUAL CLASS B NETWORKING IS NOT STYLE 7 AND WILL NOT BE APPROVED.

**VAURA**

LOCATION:

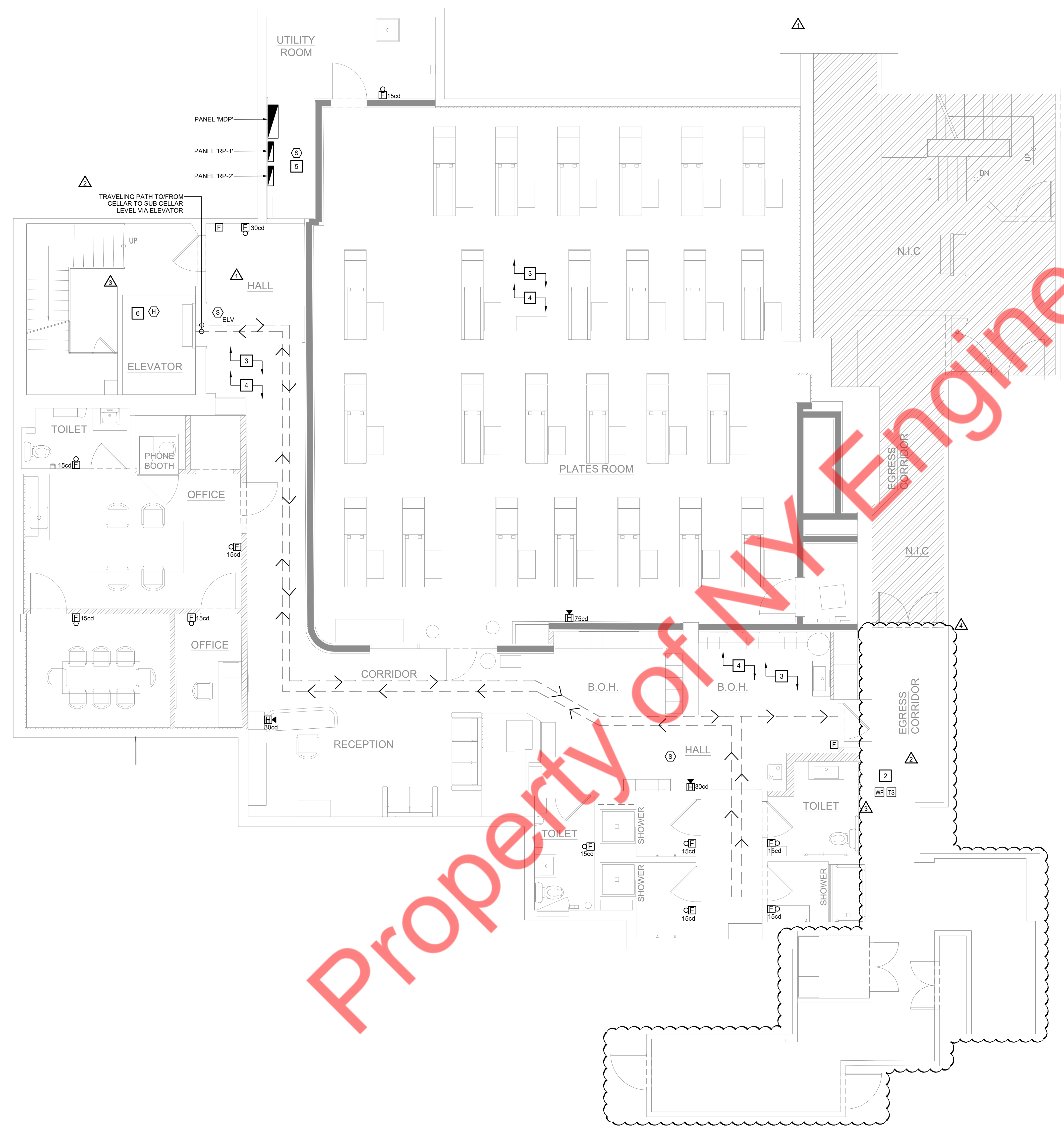
PROJECT INFORMATION:  
DATE: 02/19/2025  
PROJECT NUMBER:  
AREA: 4548.25 SQ. FT.  
DRAWN BY: NYE REVIEWED BY: NYE

TITLE:  
FIRE ALARM NOTES, BUILDING DATA, SYMBOL LIST, ABBREVIATIONS, PLOT PLAN, I/O MATRIX & RISER DIAGRAM

SHEET NUMBER:

FA-001.00  
01 OF 02

LEGEND:	NEW
	EXISTING
ABBREVIATION:	(N) - NEW
	(E) - EXISTING



**GENERAL NOTES:**

- REFER TO DWG. FA-001.00 FOR FIRE ALARM NOTES, BUILDING DATA, SYMBOL LIST & ABBREVIATIONS, PLOT PLAN, LEGEND, I/O MATRIX & RISER DIAGRAM
- FINAL CONDUIT/CABLE ROUTING SHALL BE DETERMINED IN-FIELD, AND PRIOR TO THE COMMENCEMENT OF WORK, COORDINATED WITH OTHER TRADE CONTRACTORS AND THE OWNER.
- FIRE ALARM CONTRACTOR SHALL COORDINATE ALL THE FIRE ALARM DEVICE LOCATION WITH THE RELEVANT CEILING PLAN AND CONFIRM IN THE FIELD WITH ARCHITECT/TOWNER.
- ALL DEVICES SHALL BE COMPATIBLE WITH AND MAINTAIN THE UL LISTING OF EXISTING FIRE ALARM SYSTEM.
- FIRE ALARM CONTRACTOR SHALL FIELD VERIFY EXACT REQUIREMENTS FOR FIRE ALARM SYSTEM PRIOR TO BID. REUSE EXISTING FA DEVICES BY RELOCATING TO NEW LOCATION, SUPPLY AND INSTALL ALL NEW NECESSARY EQUIPMENT AS REQUIRED.
- CONFIRM REQUIRED DEVICES AND SEQUENCE OF OPERATION WITH FIRE G.C./OWNER.

**KEYED NOTES: #**

- FIRE ALARM CONTRACTOR SHALL COORDINATE THE EXACT LOCATION OF NEW FIRE ALARM CONTROL PANEL (FACP) IN FIELD ASSOCIATED TO PROJECT SPACE. IT SHALL BE CONNECTED TO BASE BUILDING'S EXISTING FIRE ALARM CONTROL PANEL (FACP). CONTRACTOR SHALL COORDINATE THE EXACT LOCATION AND OPERABLE CONDITION IN FIELD IN COORDINATION WITH ARCHITECT/TOWNER. BASE BID ACCORDINGLY.
- WATER FLOW AND TAMPER SWITCHES MONITORED USING A DUAL MONITOR MODULE. SPRINKLER SUPERVISION IS PROVIDED THROUGH THE DUAL MONITOR SYSTEM.
- THE FIRE ALARM CONTRACTOR SHALL COORDINATE THE EXACT LOCATION OF HVAC EQUIPMENT ASSOCIATED TO PROJECT SPACE WITH THE MECHANICAL CONTRACTOR IN THE FIELD. PROVIDE A DUCT DETECTOR IF REQUIRED, AND PROVIDE CONNECTION TO NEW DEVICES FROM THE NEW FIRE ALARM PANEL AS NEEDED.
- ALL DEVICES SHALL BE COMPATIBLE WITH AND MAINTAIN THE UL LISTING OF THE EXISTING BASE BUILDING'S FIRE ALARM SYSTEM. CONNECT ALL NEW FIRE ALARM SYSTEM DEVICES TO NEW FIRE ALARM CONTROL PANEL AS REQUIRED. BASE BID ACCORDINGLY.
- PROVIDE SMOKE DETECTOR NEAR ELECTRICAL PANEL/FACP. COORDINATE EXACT LOCATION OF SMOKE DETECTOR AND ELECTRICAL PANEL WITH ARCHITECT/OWNER IN FIELD.
- CONTRACTOR TO VERIFY IF A SMOKE OR HEAT DETECTOR IS INSTALLED AT THE TOP OF THE ELEVATOR SHAFT. IF NOT, PROVIDE DETECTOR IN ACCORDANCE WITH NYC BUILDING CODE REQUIREMENTS.

**NOTE:**  
NO FOSSIL FUEL-BURNING EQUIPMENT EXISTS WITHIN THE PROJECT SPACE. THEREFORE CO DETECTION IS NOT REQUIRED.

**NOTE:**  
AS PER THE PROJECT SCOPE, THE ELEVATOR SERVES ONLY THE CELLAR AND SUB-CELLAR LEVELS, BOTH OF WHICH CURRENTLY HAVE LOBBY SMOKE DETECTORS SHOWN AS NEW ON THE FIRE ALARM DRAWINGS. ADDITIONALLY, NO MODIFICATIONS TO THE ELEVATOR RECALL SYSTEM OR ANY ELEVATOR SHAFT-ASSOCIATED FIRE ALARM DEVICES ARE PROPOSED AS PART OF THE SCOPE.

CONSULTANTS (ENGINEER):  
**NY ENGINEERS**

NEARBY ENGINEERS  
382 NE 191ST STREET  
SUITE 49674, MIAMI,  
FL 33179  
PH-914.257.3455  
WWW.NY-ENGINEERS.COM

ARCHITECT/ENGINEER SEAL:

I HEREBY CERTIFY THAT THESE DOCUMENTS WERE PREPARED OR APPROVED BY ME, AND THAT I AM DULY LICENSED PROFESSIONAL ENGINEER UNDER THE LAWS OF THE STATE OF NEW YORK. LICENSE NO. 086805, EXPIRATION DATE: 07/31/2026

**CONTRACTOR'S NOTES:**  
WRITTEN DIMENSIONS HOLD PREFERENCE OVER SCALED DIMENSIONS. DO NOT SCALE THE DRAWINGS. THE CONTRACTORS MUST VISIT JOB SITE TO VERIFY ALL EXISTING CONDITIONS AND DIMENSIONS BEFORE SUBMITTING BIDS. REPORT ANY DISCREPANCIES OF ANY CONDITIONS WHICH MAY INTERFERE WITH THE PROPER EXECUTION OF THE CONTRACT TO THE TENANT'S REPRESENTATIVE. REPORT DISCREPANCIES DURING BIDDING PROCESS AND BEFORE START OF CONSTRUCTION. CHANGE ORDERS NEED TO BE APPROVED BY THE CONSTRUCTION MANAGER FOR ISSUES ARISING FROM THE FIELD CONDITIONS OR CONFLICTS BETWEEN THE PLANS AND THE EXISTING CONDITIONS PRIOR TO THE COMMENCEMENT OF WORK.

DATE	ISSUE
03/28/2025	PERMIT SET
06/18/2025	FDNY COMMENTS
07/14/2025	FDNY COMMENTS
07/31/2025	FDNY COMMENTS
08/12/2025	FDNY COMMENTS

DATE	REVISION
------	----------



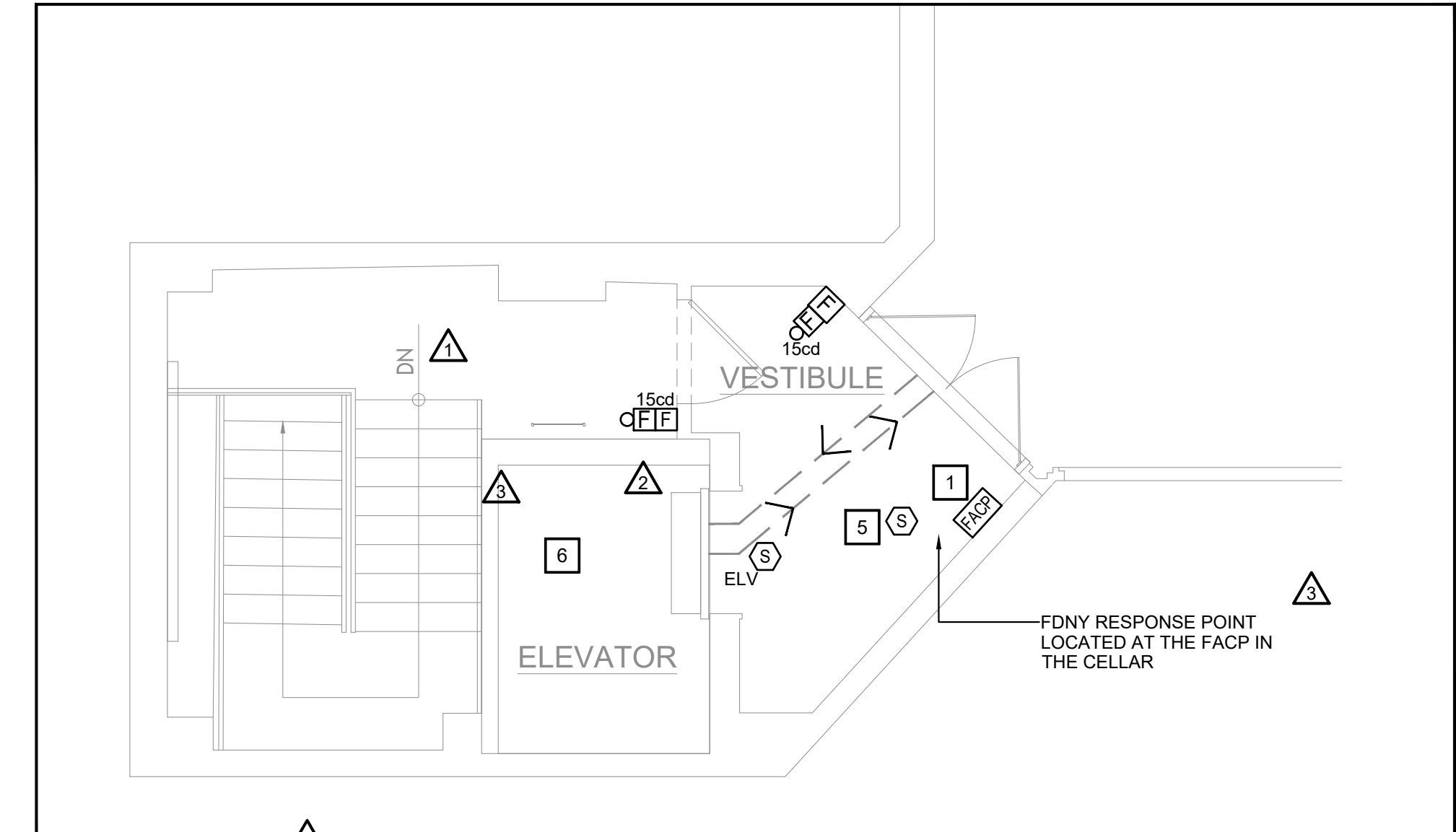
LOCATION:

PROJECT INFORMATION:  
DATE: 02/19/2025  
PROJECT NUMBER:  
AREA: 4548.25 SQ. FT.  
DRAWN BY: NYE REVIEWED BY: NYE

TITLE:  
SUB CELLAR (SC1) AND CELLAR FIRE ALARM PLAN

SHEET NUMBER:

FA-100.00  
02 OF 02



2 SCALE 1/4" = 1'-0" CELLAR FIRE ALARM PLAN