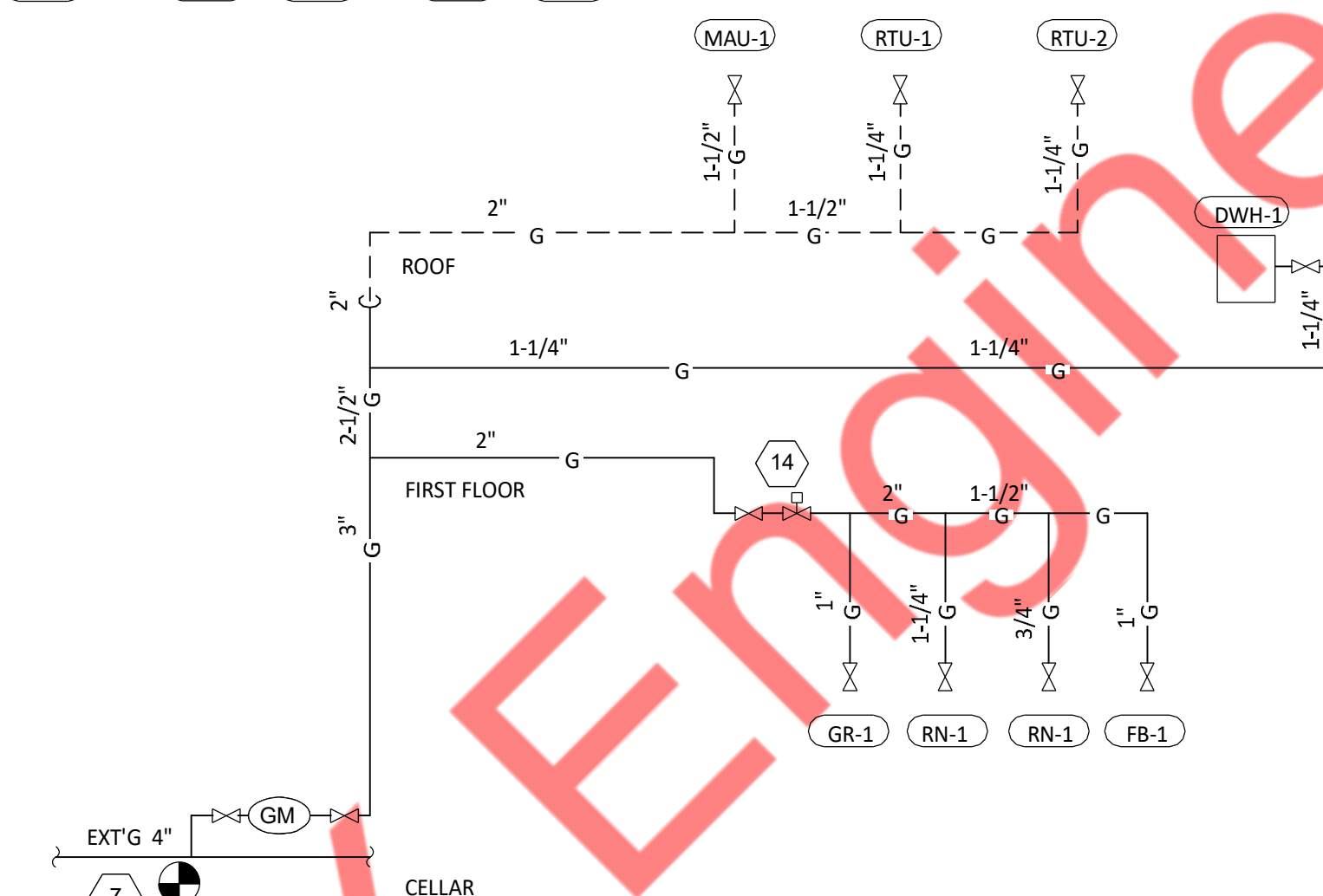
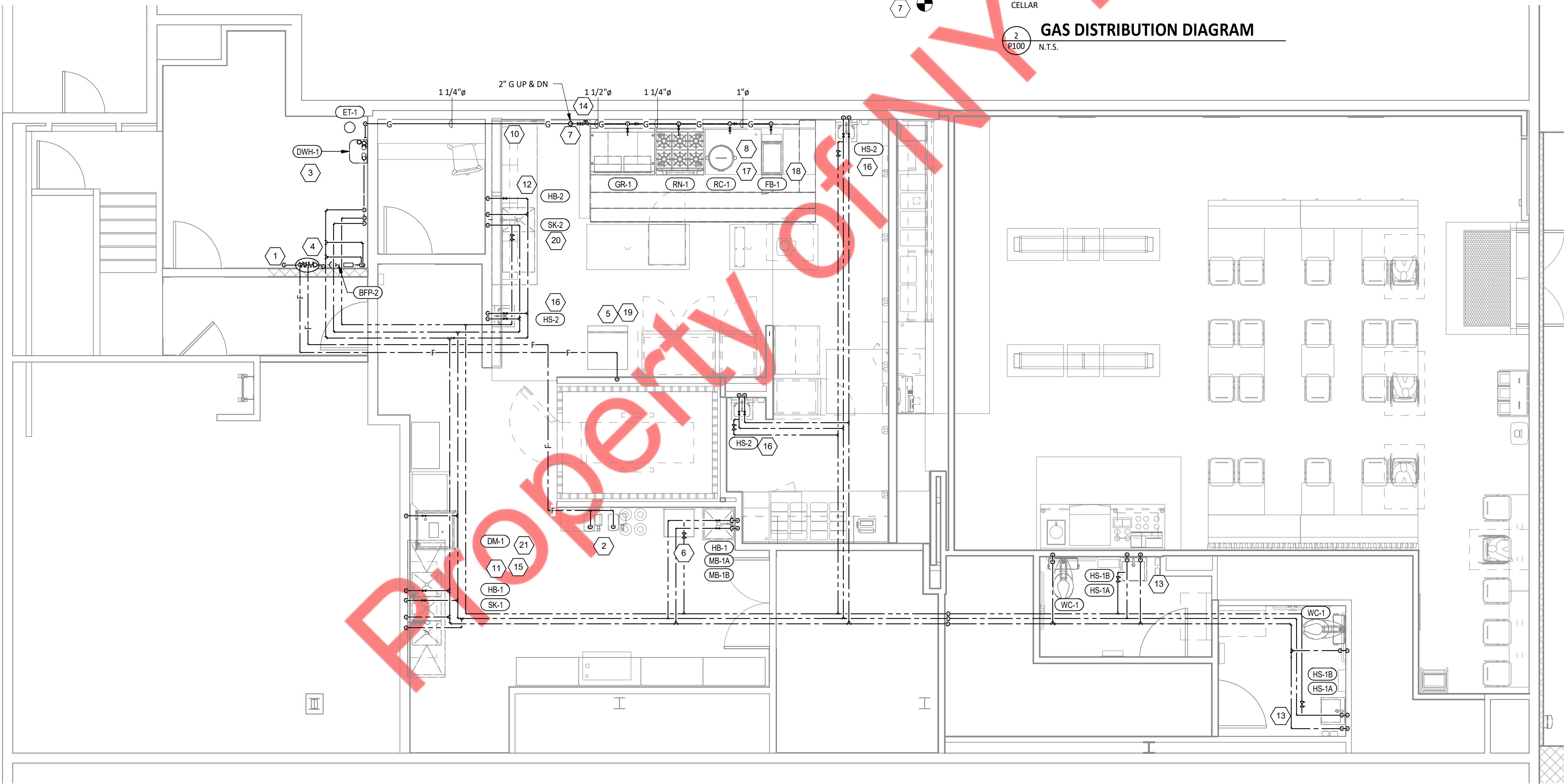


3 PLUMBING SUPPLY DIAGRAM
N.T.S.



2 GAS DISTRIBUTION DIAGRAM
N.T.S.

- PLUMBING SUPPLY PLAN NOTES**
- CONNECT TO THE EXISTING 1-1/2" DOMESTIC WATER SERVICE WITH EXISTING UPSTREAM WATER METER AND RPZ BACKFLOW PREVENTER.
 - PROVIDE 1/2" FILTERED WATER TO THE BAG-IN-BOX SODA CARBONATOR AT 102" AFF. SODA CARBONATOR SHALL HAVE AN INTEGRAL ASSE 1022-RATED CARBONATED BEVERAGE BACKFLOW PREVENTION DEVICE.
 - PROVIDE WATER HEATERS DWH-1 PER DETAIL 1/P700.
 - PROVIDE WATER FILTERS MOUNTED TO WALL PER DETAIL 11/P700. PROVIDE 1/2" SUPPLY PIPES FROM FILTERS TO ICE MAKER AND SODA CARBONATOR AS SHOWN.
 - PROVIDE 1/2" FILTERED WATER ROUGH-IN TO THE ICE MAKER AT 56" AFF. PROVIDE 6' LONG STAINLESS STEEL FLEXIBLE BRAIDED WASHING MACHINE WATER CONNECTOR WITH MINIMUM 0.43" ID (BRASSCRAFT SL12-72WA F OR EQUAL) FOR FINAL CONNECTION TO ICE MAKER.
 - PROVIDE DOMESTIC WATER ROUGH-INS FOR THE MOP BASIN FAUCET AT 36" AFF. PROVIDE DOMESTIC WATER ROUGH-INS FOR THE CHEMICAL DISPENSER FAUCET (HB-1) AT 64" AFF DIRECTLY ABOVE THE MOP BASIN FAUCET. SEE ARCHITECTURALELEVATION FOR ADDITIONAL INFORMATION.
 - CONNECT TO EXISTING 4" GAS SERVICE IN GAS METER ROOM AT CELLAR WITH NEW 3" GAS METER.COORDINATE WITH OTHER SERVICES AT CELLAR.
 - PROVIDE GAS CONNECTIONS TO THE COOKING EQUIPMENT PER DETAIL 7/P700.
 - PROVIDE ACCESSIBLE LINE-SIZED GAS VALVE AND UNION AT GAS CONNECTION TO THE EQUIPMENT.
 - REFER TO ARCHITECTURAL DRAWINGS FOR PAINTING OF INTERIOR AND EXTERIOR EXPOSED GAS PIPE.
 - PROVIDE DOMESTIC WATER ROUGH-INS FOR THE CHEMICAL DISPENSER FAUCET (HB-1) AT 52" AFF. SEE ARCHITECTURAL ELEVATION FOR ADDITIONAL INFORMATION.
 - PROVIDE DOMESTIC WATER ROUGH-INS FOR THE VICTORY WASH DISPENSER FAUCET (HB-2) AT 52" AFF. SEE ARCHITECTURAL ELEVATION FOR ADDITIONAL INFORMATION.
 - PROVIDE ROUGH-INS TO RESTROOM HAND SINKS AS SHOWN IN DETAIL 14/P700.
 - PROVIDE KITCHEN EQUIPMENT GAS SHUTOFF 6" BELOW THE CEILING PER DETAIL 4/P700.
 - CONNECT CHEMICAL DISPENSER TO HB-1. CHEMICAL DISPENSER HAS AN INTEGRAL AIR GAP AS IS SHOWN IN DETAIL 10/P700.
 - PROVIDE ASSE 1016/1070 POINT-OF-USE THERMOSTATIC MIXING VALVE, WATTS LFUSG-B, ON WATER SUPPLY TO KITCHEN HAND SINKS. PROVIDE ANGLE STOP BELOW SINK, FASTEN MIXING VALVE TO WALL, AND MAKE FINAL CONNECTION FROM ANGLE STOPS TO MIXING VALVE AND FROM MIXING VALVE TO FAUCET USING BRAIDED STAINLESS STEEL HOSE. ADJUST MIXING VALVE FOR A DISCHARGE TEMPERATURE OF APPROXIMATELY 110° F.
 - PROVIDE GAS CONNECTION TO THE RICE COOKER PER DETAIL 6/P700.
 - PROVIDE GAS ROUGH-IN TO FRYER BEHIND RICE COOKER TABLE SO THAT VALVES ARE ACCESSIBLE ONCE FRYER IS SECURED INTO PLACE.
 - INSTALL RGF IMSB ICE MAKER SANITIZER FURNISHED BY TUV PER CHIPOTLE'S INSTALLATION INSTRUCTIONS.
 - PROVIDE 3/4" DOMESTIC HOT AND COLD WATER ROUGH-INS FOR THE PREP SINK (SK-2) FAUCET AT 24" AFF TO ALLOW FOR THE VICTORY WASH CHEMICAL DOCK TO BE INSTALLED DIRECTLY BELOW THE PREP SINK BASIN.
 - PROVIDE 3/4" HOT WATER TO THE DISH MACHINE, MAKING FINAL CONNECTION USING 3/4" COPPER PIPE ONCE DISH MACHINE IS IN ITS FINAL LOCATION (FLEXIBLE CONNECTION IS NOT ACCEPTABLE). PROVIDE WATER HAMMER ARRESTOR ON HOT WATER LINE. PROVIDE AN ACCESSIBLE SHUTOFF VALVE AND UNION BELOW THE DISH MACHINE AND INSTALL THE STRAINER FURNISHED WITH THE DISH MACHINE AT THE CONNECTION TO THE UNIT.
 - SUPPORT THE GAS PIPE ON THE ROOF PER DETAIL 5/P700. WOOD BLOCKING IS NOT AN ACCEPTABLE METHOD OF SUPPORTING THE GAS PIPE.



CONNECTED GAS LOAD

FIXTURE	TAG	MBH	EQUIVALENT LENGTH FROM METER [FT]
XXXXX ROOFTOP UNIT	RTU-2	250	280
XXXXX ROOFTOP UNIT	RTU-1	150	224
WATER HEATER	DWH-1	199	200
MAKEUP AIR UNIT	MAU-1	120	185
RICE COOKER	RC-1	35	175
FRYER	FB-1	95	175
RANGE	RN-1	192	170
GRIDDLE	GR-1	107	165
Grand total		1148	MAX: 280

- NOTES:
- PRESSURE REQUIRED AFTER METER: 7" W.C.
 - DISTANCES ARE APPROXIMATE

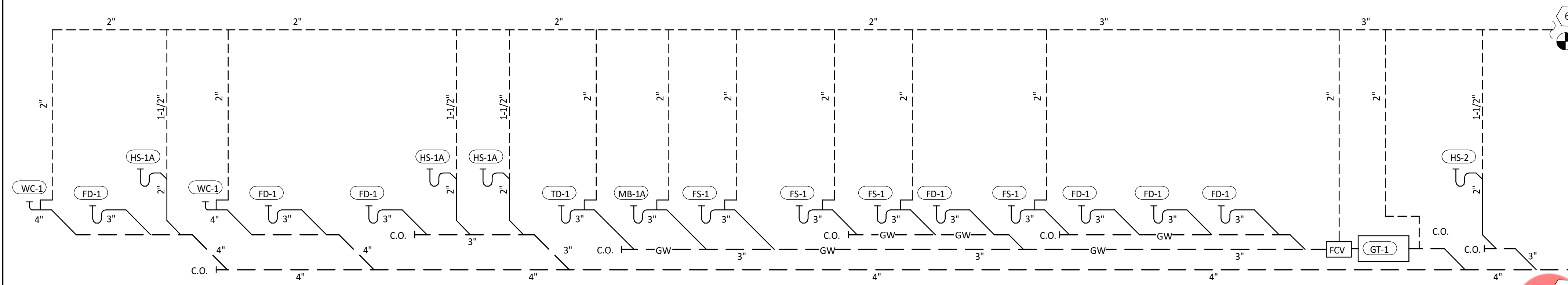
- GENERAL NOTE:
- FOR KITCHEN /PREP AREA & BATHROOM FLOOR DRAINS ,PROVIDE FLOW ACTIVATED TRAP PRIMER & ELECTRONIC TRAP PRIMER FOR FLOOR DRAIN IN UTILITY ROOM
 - CONTRACTOR TO FIELD VERIFY EXACT LOCATION AND SIZE OF EXIST. CW & GAS SYSTEM & CONNECT NEW TO EXIST. PIPING.
 - COORDINATE WITH MECHANICAL CONTRACTOR FOR HVAC DRAIN PIPING.
 - CONTRACTOR TO COORDINATE WITH ARCHITECTURAL DRAWINGS FOR ALL PLUMBING FIXTURES SPECIFICATIONS AND MOUNTING HEIGHT INSTALLATION.
 - FOR PIPE SIZES, REFER RISER DIAGRAM .
 - FOR ALL INDIRECT WASTE PIPING, PROVIDE AT LEAST 1" AIR GAP.

PLUMBING WASTE & VENT PLAN NOTES

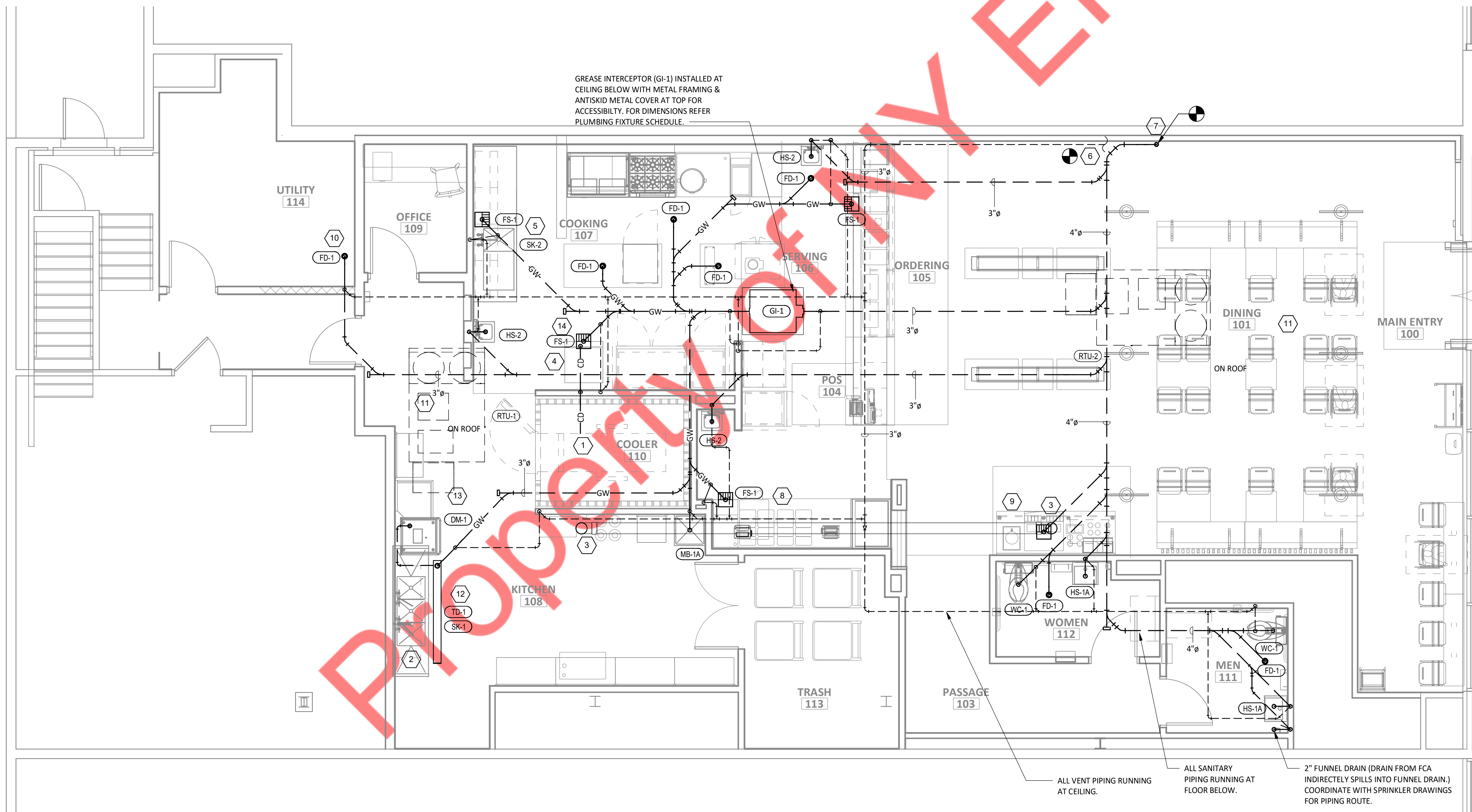
- 1 PROVIDE 3/4" CONDENSATE DRAIN FROM THE WALK-IN COOLER EVAPORATOR TO THE FLOOR SINK BELOW THE ICE MAKER AS SHOWN. SLOPE CONDENSATE DRAIN A MINIMUM OF 1" PER FOOT. HOLD EXPOSED CONDENSATE DRAIN IN WALK-IN COOLER AS HIGH AS POSSIBLE. CONCEAL DRAIN PIPING WITHIN FRAMED WALLS AS SHOWN. DISCHARGE THROUGH AN AIR GAP. MAKE FINAL CONNECTION TO EVAPORATOR INSIDE WALK-IN COOLER USING A UNION. CONDENSATE DRAIN SHOULD PENETRATE WALL BEHIND ICE MAKER AT 8" AFF AND BE SECURED TO FLOOR UNDER ICE MAKER.
- 2 PROVIDE DRAIN CONNECTIONS TO THE THREE COMPARTMENT SINK PER DETAIL 2/P700.
- 3 PROVIDE A 6" SCHEDULE 40 PVC CONDUIT SODA LINE SLEEVE UNDER THE SLAB FROM THE BAG-IN-BOX RACK TO THE SODA FOUNTAIN PER DETAIL 12/P700. SEE THE ARCHITECTURAL FLOOR PLAN FOR THE LOCATIONS OF THESE STUBS.
- 4 PROVIDE PVC DRAIN PIPES FROM THE ICE MACHINE TO THE FLOOR SINK PER THE MANUFACTURER'S INSTALLATION INSTRUCTIONS. PROVIDE A CODE-APPROVED AIR GAP AT THE DISCHARGE TO THE FLOOR SINK. SECURE DRAIN PIPES TO THE BOTTOM OF THE ICE MAKER.
- 5 PROVIDE DRAIN LINES FROM THE FOOD PREP SINK TO THE FLOOR SINK. PROVIDE AN AIR GAP AT THE DISCHARGE TO THE FLOOR SINK.
- 6 CONNECT 3" VENT TO EXISTING VENT
- 7 CONNECT TO EXISTING 5" SANITARY SEWER.
- 8 PROVIDE 3/4" VALVED DRAIN FROM HOT FOOD TABLE TO THE FLOOR SINK. DRAIN THROUGH AN AIR GAP.
- 9 PROVIDE INSULATED COPPER DRAIN LINES FROM THE TEA TRAY DRAIN AND THE SODA MACHINE DRAIN TO THE FLOOR SINK. DRAIN THROUGH AN AIR GAP.
- 10 PROVIDE DRAIN FROM WATER FILTER BFP TO FLOOR DRAIN CONCEALED IN THE WALL AS SHOWN IN DETAIL 17/P700.
- 11 PROVIDE CONDENSATE TRAP ON RTU PER DETAIL 13/P700. COORDINATE RTU LOCATION WITH HVAC DRAWINGS.
- 12 PROVIDE TRENCH DRAIN PER DETAIL 15/P700.
- 13 PROVIDE 1-1/2" DRAIN PIPE FROM DISH MACHINE TO FLOOR SINK. HOLD DRAIN LINE TIGHT TO WALL AS SHOWN AND DRAIN THROUGH AN AIR GAP AT THE FLOOR SINK.
- 14 PROVIDE INDIRECT WASTE AND CONDENSATE DRAINS FROM FIXTURES OTHER THAN KITCHEN SINKS CONCEALED IN THE WALL AS SHOWN IN DETAIL 9/P700.

GENERAL NOTE:

1. FOR KITCHEN /PREP AREA & BATHROOM FLOOR DRAINS ,PROVIDE FLOW ACTIVATED TRAP PRIMER.
2. CONTRACTOR TO FIELD VERIFY EXACT LOCATION AND SIZE OF EXIST. SANITARY & VENT SYSTEM & CONNECT NEW TO EXIST. PIPING.
3. COORDINATE WITH MECHANICAL CONTRACTOR FOR HVAC DRAIN PIPING.
4. CONTRACTOR TO COORDINATE WITH ARCHITECTURAL DRAWINGS FOR ALL PLUMBING FIXTURES SPECIFICATIONS AND MOUNTING HEIGHT INSTALLATION.
5. FOR PIPE SIZES, REFER RISER DIAGRAM .
6. FOR ALL INDIRECT WASTE PIPING, PROVIDE AT LEAST 1" AIR GAP.



2 SANITARY WASTE & VENT DIAGRAM
P110 N.T.S.



GREASE INTERCEPTOR (GI-1) INSTALLED AT CEILING BELOW WITH METAL FRAMING & ANTISKID METAL COVER AT TOP FOR ACCESSIBILITY. FOR DIMENSIONS REFER PLUMBING FIXTURE SCHEDULE.

ALL VENT PIPING RUNNING AT CEILING.
ALL SANITARY PIPING RUNNING AT FLOOR BELOW.
2" FUNNEL DRAIN (DRAIN FROM FCA INDIRECTLY SPILLS INTO FUNNEL DRAIN.) COORDINATE WITH SPRINKLER DRAWINGS FOR PIPING ROUTE.

1 P-Waste & Vent Plan
P110 1/4" = 1'-0"

PLUMBING SUPPLY PLAN NOTES

- 1 CONNECT TO THE EXISTING 1-1/2" DOMESTIC WATER SERVICE WITH EXISTING UPSTREAM WATER METER AND RPZ BACKFLOW PREVENTER.
- 2 METER AND RPZ BACKFLOW PREVENTER.
- 3 PROVIDE 1/2" FILTERED WATER TO THE BAG-IN-BOX SODA CARBONATOR AT 102" AFF. SODA CARBONATOR SHALL HAVE AN INTEGRAL ASSE 1022-RATED CARBONATED BEVERAGE BACKFLOW PREVENTION DEVICE.
- 4 PROVIDE WATER HEATERS DWH-1 PER DETAIL 1/P700.
- 5 PROVIDE 1/2" FILTERED WATER ROUGH-IN TO THE ICE MAKER AT 56" AFF. PROVIDE 6' LONG STAINLESS STEEL FLEXIBLE BRAIDED WASHING MACHINE WATER CONNECTOR WITH MINIMUM 0.43" ID (BRASSCRAFT SL12-72WA F OR EQUAL) FOR FINAL CONNECTION TO ICE MAKER.
- 6 PROVIDE DOMESTIC WATER ROUGH-INS FOR THE MOP BASIN FAUCET AT 36" AFF. PROVIDE DOMESTIC WATER ROUGH-INS FOR THE CHEMICAL DISPENSER FAUCET (HB-1) AT 64" AFF DIRECTLY ABOVE THE MOP BASIN FAUCET. SEE ARCHITECTURALE LEVATION FOR ADDITIONAL INFORMATION.
- 7 CONNECT TO EXISTING 4" GAS SERVICE IN GAS METER ROOM AT CELLAR WITH NEW 3" GAS METER.COORDINATE WITH OTHER SERVICES AT CELLAR.
- 8 PROVIDE GAS CONNECTIONS TO THE COOKING EQUIPMENT PER DETAIL 7/P700.
- 9 PROVIDE ACCESSIBLE LINE-SIZED GAS VALVE AND UNION AT GAS CONNECTION TO THE EQUIPMENT.
- 10 REFER TO ARCHITECTURAL DRAWINGS FOR PAINTING OF INTERIOR AND EXTERIOR EXPOSED GAS PIPE.
- 11 PROVIDE DOMESTIC WATER ROUGH-INS FOR THE CHEMICAL DISPENSER FAUCET (HB-1) AT 52" AFF. SEE ARCHITECTURAL ELEVATION FOR ADDITIONAL INFORMATION.
- 12 PROVIDE DOMESTIC WATER ROUGH-INS FOR THE VICTORY WASH DISPENSER FAUCET (HB-2) AT 52" AFF. SEE ARCHITECTURAL ELEVATION FOR ADDITIONAL INFORMATION.
- 13 PROVIDE ROUGH-INS TO RESTROOM HAND SINKS AS SHOWN IN DETAIL 14/P700.
- 14 PROVIDE KITCHEN EQUIPMENT GAS SHUTOFF 6" BELOW THE CEILING PER DETAIL 4/P700.
- 15 CONNECT CHEMICAL DISPENSER TO HB-1. CHEMICAL DISPENSER HAS AN INTEGRAL AIR GAP AS IS SHOWN IN DETAIL 10/P700.
- 16 PROVIDE ASSE 1016/1070 POINT-OF-USE THERMOSTATIC MIXING VALVE, WATTS LFUSG-B, ON WATER SUPPLY TO KITCHEN HAND SINKS. PROVIDE ANGLE STOP BELOW SINK, FASTEN MIXING VALVE TO WALL, AND MAKE FINAL CONNECTION FROM ANGLE STOPS TO MIXING VALVE AND FROM MIXING VALVE TO FAUCET USING BRAIDED STAINLESS STEEL HOSE. ADJUST MIXING VALVE FOR A DISCHARGE TEMPERATURE OF APPROXIMATELY 110° F.
- 17 PROVIDE GAS CONNECTION TO THE RICE COOKER PER DETAIL 6/P700.
- 18 PROVIDE GAS ROUGH-IN TO FRYER BEHIND RICE COOKER TABLE SO THAT VALVES ARE ACCESSIBLE ONCE FRYER IS SECURED INTO PLACE.
- 19 INSTALL RGF IMSB ICE MAKER SANITIZER FURNISHED BY TUV PER CHIPOTLE'S INSTALLATION INSTRUCTIONS.
- 20 PROVIDE 3/4" DOMESTIC HOT AND COLD WATER ROUGH-INS FOR THE PREP SINK (SK-2) FAUCET AT 24" AFF TO ALLOW FOR THE VICTORY WASH CHEMICAL DOCK TO BE INSTALLED DIRECTLY BELOW THE PREP SINK BASIN.
- 21 PROVIDE 3/4" HOT WATER TO THE DISH MACHINE, MAKING FINAL CONNECTION USING 3/4" COPPER PIPE ONCE DISH MACHINE IS IN ITS FINAL LOCATION (FLEXIBLE CONNECTION IS NOT ACCEPTABLE). PROVIDE WATER HAMMER ARRESTOR ON HOT WATER LINE. PROVIDE AN ACCESSABLE SHUTOFF VALVE AND UNION BELOW THE DISH MACHINE AND INSTALL THE STRAINER FURNISHED WITH THE DISH MACHINE AT THE CONNECTION TO THE UNIT.
- 22 SUPPORT THE GAS PIPE ON THE ROOF PER DETAIL 5/P700. WOOD BLOCKING IS NOT AN ACCEPTABLE METHOD OF SUPPORTING THE GAS PIPE.

CONNECTED GAS LOAD			
FIXTURE	TAG	MBH	EQUIVALENT LENGTH FROM METER [FT]
XXXXX ROOFTOP UNIT	RTU-2	250	280
XXXXX ROOFTOP UNIT	RTU-1	150	224
WATER HEATER	DWH-1	199	200
MAKEUP AIR UNIT	MAU-1	120	185
RICE COOKER	RC-1	35	175
FRYER	FB-1	95	175
RANGE	RN-1	192	170
GRIDDLE	GR-1	107	165
Grand total		1148	MAX: 280

NOTES:
 1. PRESSURE REQUIRED AFTER METER: 7" W.C.
 2. DISTANCES ARE APPROXIMATE

