

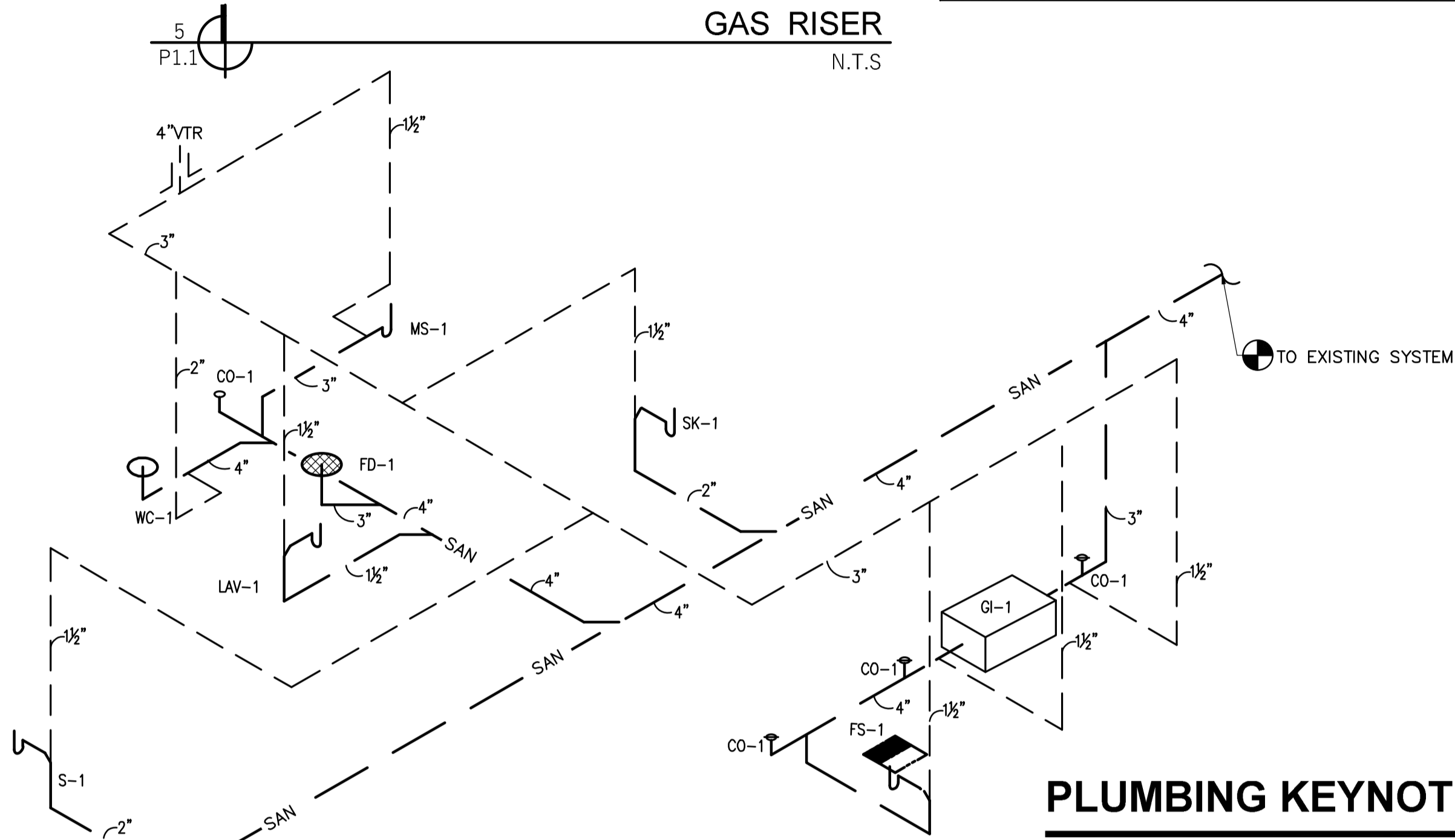
GAS LOAD SUMMARY	
EQUIPMENT TAG	MBH LOAD
RTU-1(E)	115
RTU-2(N)	90
WATER HEATER	40
<b>TOTAL GAS LOAD</b>	<b>245</b>

GAS PIPE SIZING PER TABLE 402.4(2)  
 -CONNECTICUT FUEL GAS CODE 2015  
 (ADOPTS 2015 IFGC)  
 GAS INLET PRESSURE- LESS THAN 2 PSI.  
 PRESSURE DROP- 0.5" WC  
 SPECIFIC GRAVITY- 0.60  
 EQUIVALENT LENGTH OF PIPE = 195 FT

FIXTURE	QUANTITY	WATER SUPPLY UNITS PER FIXTURE (WSFU)			TOTAL			DRAINAGE FIXTURE UNITS PER FIXTURE (DFU)	TOTAL
		CW	HW	TOTAL	CW	HW	TOTAL		
WATER CLOSET (PUBLIC)	1	5.0	-	5.0	5.0	-	5.0	4	4
LAVATORY (PUBLIC)	1	1.5	1.5	2	1.5	1.5	2	2	2
SERVICE SINK	1	2.25	2.25	3	2.25	2.25	3	2	2
HAND SINK	2	1	1	1.4	2	2	2.8	2	4
3-COMP. SINK	1	3	3	4	3	3	4	2	2
FLOOR SINK	1	-	-	-	-	-	-	5	5
<b>TOTAL FIXTURE UNITS</b>				<b>13.75</b>	<b>8.75</b>	<b>16.8</b>		<b>17</b>	<b>19</b>

TOTAL WATER SUPPLY FIXTURE UNIT- 16.8= 18 GPM, WATER SERVICE SIZE REQUIRED= 1"  
 TOTAL DRAINAGE FIXTURE UNIT- 19 DFU, SANITARY PIPE SIZE REQUIRED = 4"  
 WSFU VALUE AS PER INTERNATIONAL PLUMBING CODE 2015, TABLE E103.3(2) & TABLE 709.1

**GAS RISER**  
N.T.S.



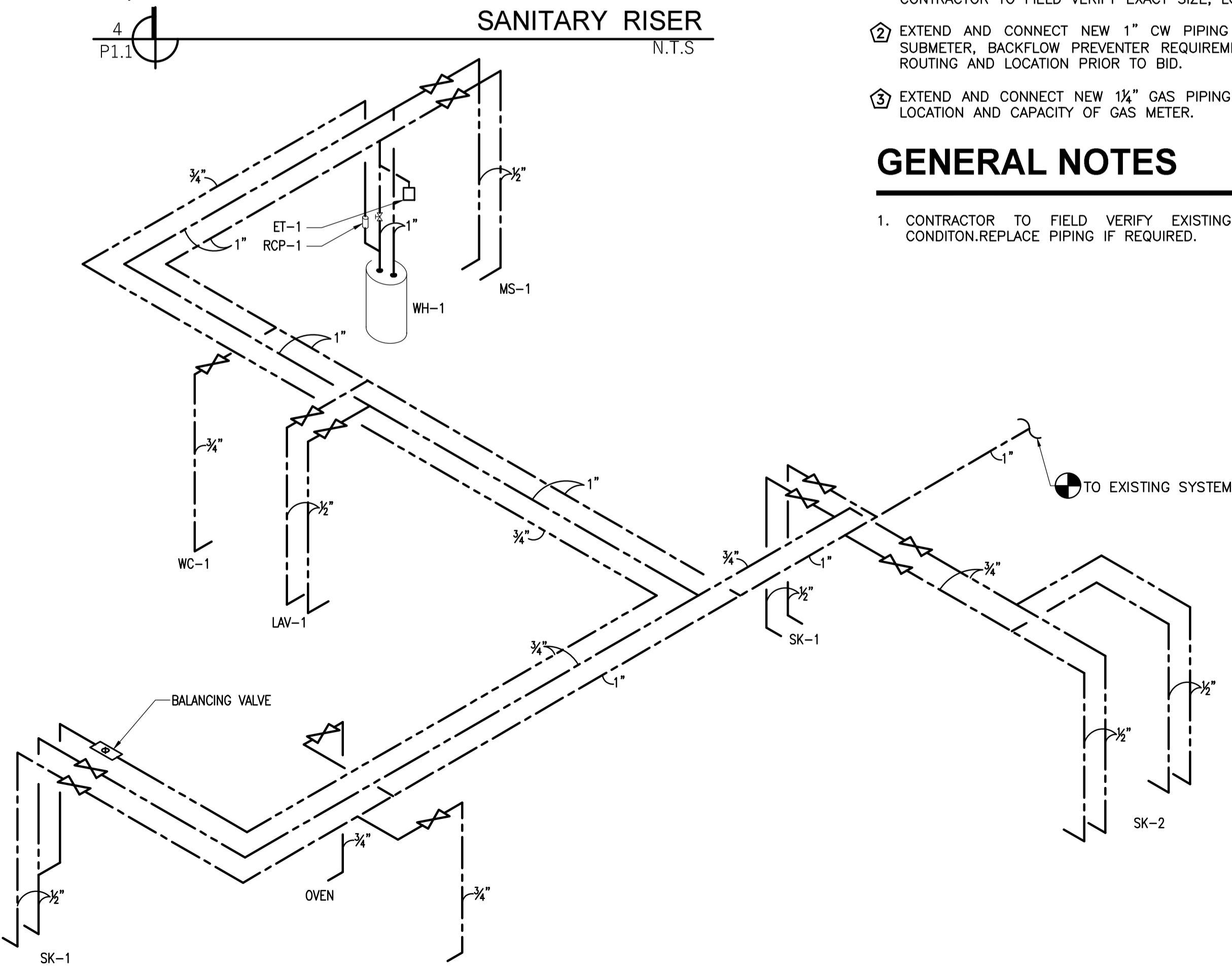
**PLUMBING KEYNOTES**

- ① CONNECT NEW 4" SANITARY WASTE PIPING TO EXISTING SANITARY WASTE LINE OF ADEQUATE SIZE. CONTRACTOR TO FIELD VERIFY EXACT SIZE, LOCATION, ROUTING AND INVERT ON SITE.
- ② EXTEND AND CONNECT NEW 1" CW PIPING TO EXISTING CW LINE. CONTRACTOR TO CONFIRM WATER SUBMETER, BACKFLOW PREVENTER REQUIREMENTS WITH LANDLORD. CONTRACTOR TO FIELD VERIFY SIZE, ROUTING AND LOCATION PRIOR TO BID.
- ③ EXTEND AND CONNECT NEW 1 1/2" GAS PIPING TO EXISTING GAS LINE. CONTRACTOR SHALL VERIFY EXACT LOCATION AND CAPACITY OF GAS METER.

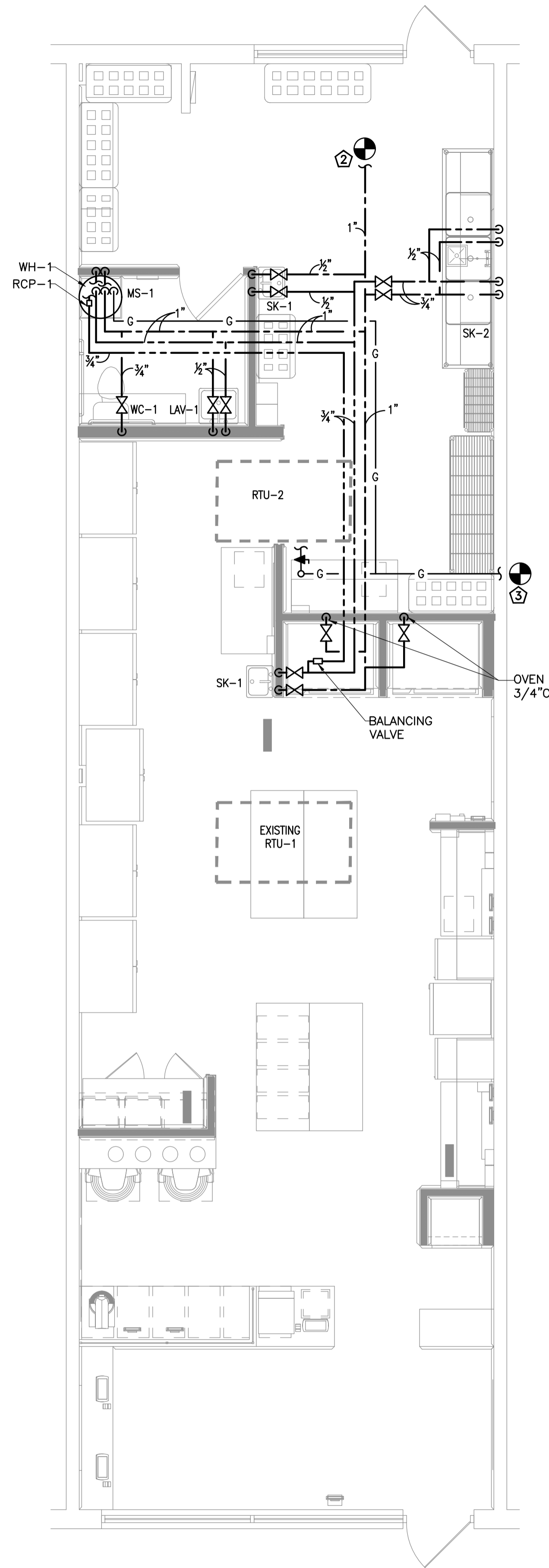
**GENERAL NOTES**

- 1. CONTRACTOR TO FIELD VERIFY EXISTING RTU-1 AND ENSURE GAS PIPING IS IN GOOD CONDITION. REPLACE PIPING IF REQUIRED.

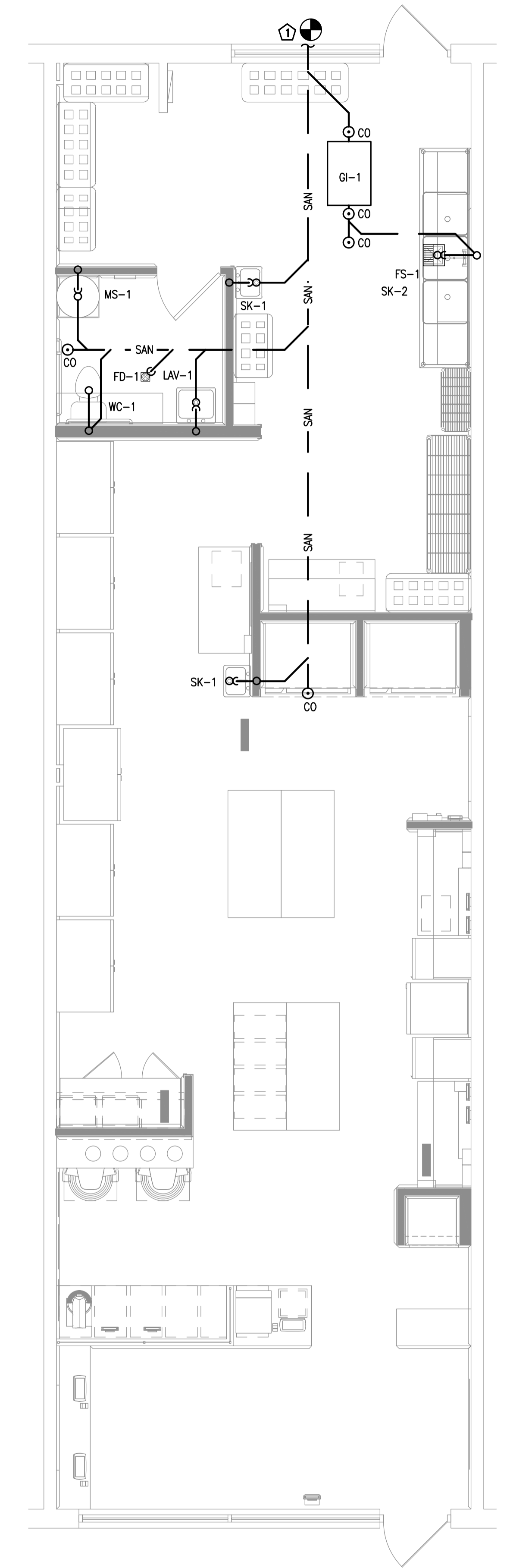
**SANITARY RISER**  
N.T.S.



**WATER RISER**  
N.T.S.



**PLUMBING WATER PLAN**  
1/4" = 1'-0"



**PLUMBING SANITARY PLAN**  
1/4" = 1'-0"