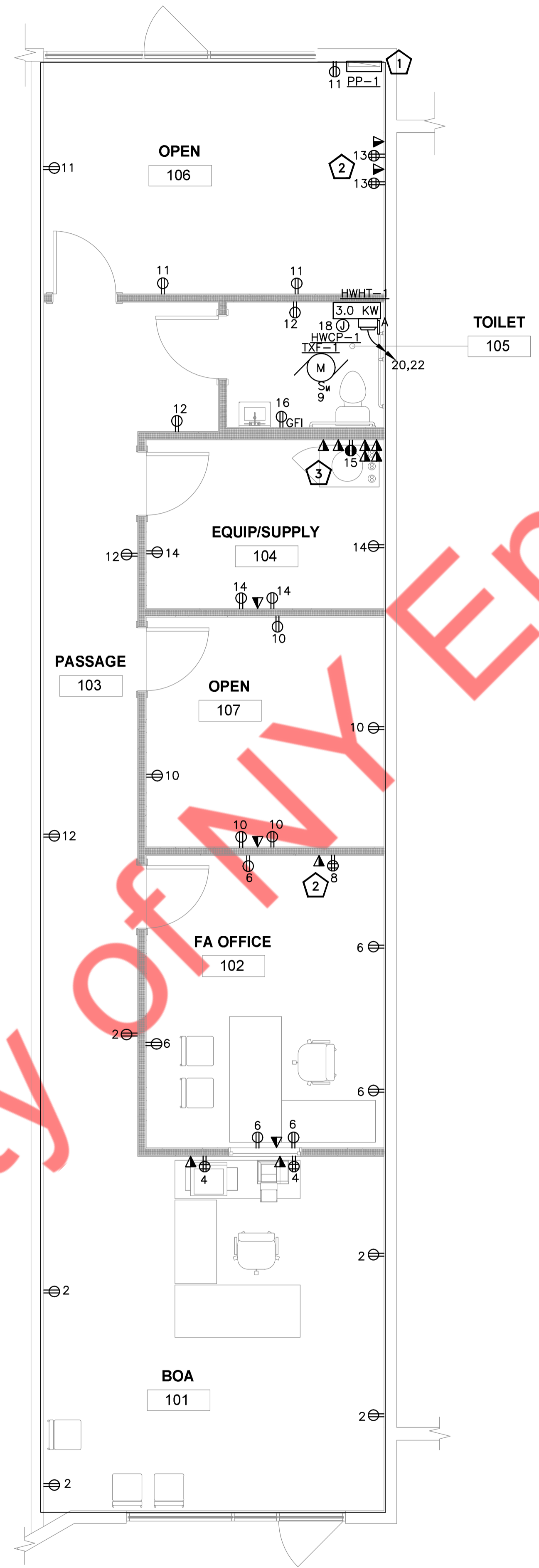
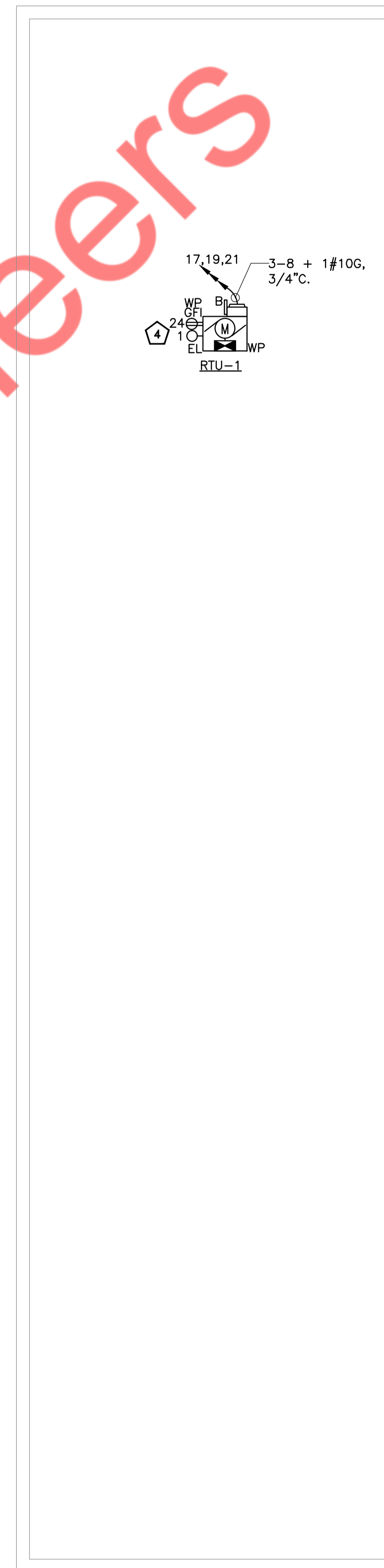


1 LIGHTING PLAN
E-100/ 1/4"=1'-0"



2 ELECTRICAL POWER PLAN
E-100/ 1/4"=1'-0"



3 ROOF ELECTRICAL POWER PLAN
E-100/ 1/4"=1'-0"

Property of ANY Engineers

KEYED WORK NOTES:

- 1 NEW 200A, 120/208V, 3-PHASE ELECTRICAL PANEL. E.C. SHALL COORDINATE EXACT LOCATION IN FIELD.
- 2 PROVIDE ELECTRICAL POWER & DATA OUTLETS AS REQUIRED FOR FUTURE AUDIO VISUAL DISPLAY. COORDINATE WITH ARCHITECT/AV CONSULTANT FOR EXACT REQUIREMENTS.
- 3 COORDINATE FINAL ELECTRICAL REQUIREMENTS OF BRANCH OFFICE CONTROLLER (BOC) PHONE SYSTEM WITH ARCHITECT/MANUFACTURER.
- 4 LIGHT FIXTURE (120V, 60HZ) WITH LOCAL SWITCH FOR MANUAL ON/OFF AND GFI RECEPTACLE MOUNTED ON KINDORF SUPPORT.

DRAWING NOTES:

1. ALL BRANCH CIRCUITS HOMERUNS ASSIGN INDICATED ON THIS PLAN SHALL BE CIRCUITED TO PANELBOARD 'PP-1', CIRCUIT NUMBER INDICATED, U.O.N.
2. REFER TO DWG. E-001 FOR ELECTRICAL GENERAL NOTES, SYMBOL LIST & ABBREVIATIONS, LIGHTING FIXTURE SCHEDULE & CONTROLS.
3. REFER TO DWG. E-002 & E-003 FOR ADDITIONAL ELECTRICAL SPECIFICATIONS.
4. CONTRACTOR TO COORDINATE WITH ARCHITECT FOR EXACT HEIGHT OF OUTLETS.