

ELECTRICAL LEGEND

SYMBOL	DESCRIPTION
	EXHAUST FAN
	COMBINATION EXHAUST FAN/LIGHT (REFER TO MECHANICAL PLANS)
	SPEAKERS @ CEILING
	JUNCTION BOX
	CEILING MOUNTED SMOKE DETECTOR 110V, INTERCONNECTED W/ BATT. BACKUP. SMOKE DETECTOR SHALL COMPLY WITH NFPA 72, AND FBC 905.2.
	BATTERY BACK UP EXIT LIGHT
	BATTERY BACK UP EMERGENCY LIGHT
	WALL SWITCH (SINGLE, DOUBLE,)
	WALL SWITCH (3 WAY, 4 WAY)
	WALL SWITCH (TIMER)
	DIMMER WALL SWITCH
	OCCUPANCY SENSOR WALL SWITCH
	VARIABLE SPEED SWITCH
	OCCUPANCY SENSOR
	DAYLIGHT SENSOR
	LIGHTING CONTROL PANEL
	EM-02
	FA-02
	FA-01
	EM-01
	M-01
	L-04
	L-05
	L-02
	L-01
	L-11
	L-08
	L-3A
	L-3B

ABOVE FINISH FLOOR= A.F.F.
 COUNTER TOP LEVEL=C
 GROUND FAULT INTERRUPTER= GFCI
 VERIFY PRIOR TO INSTALL= VH
 WEATHER PROOF= WP

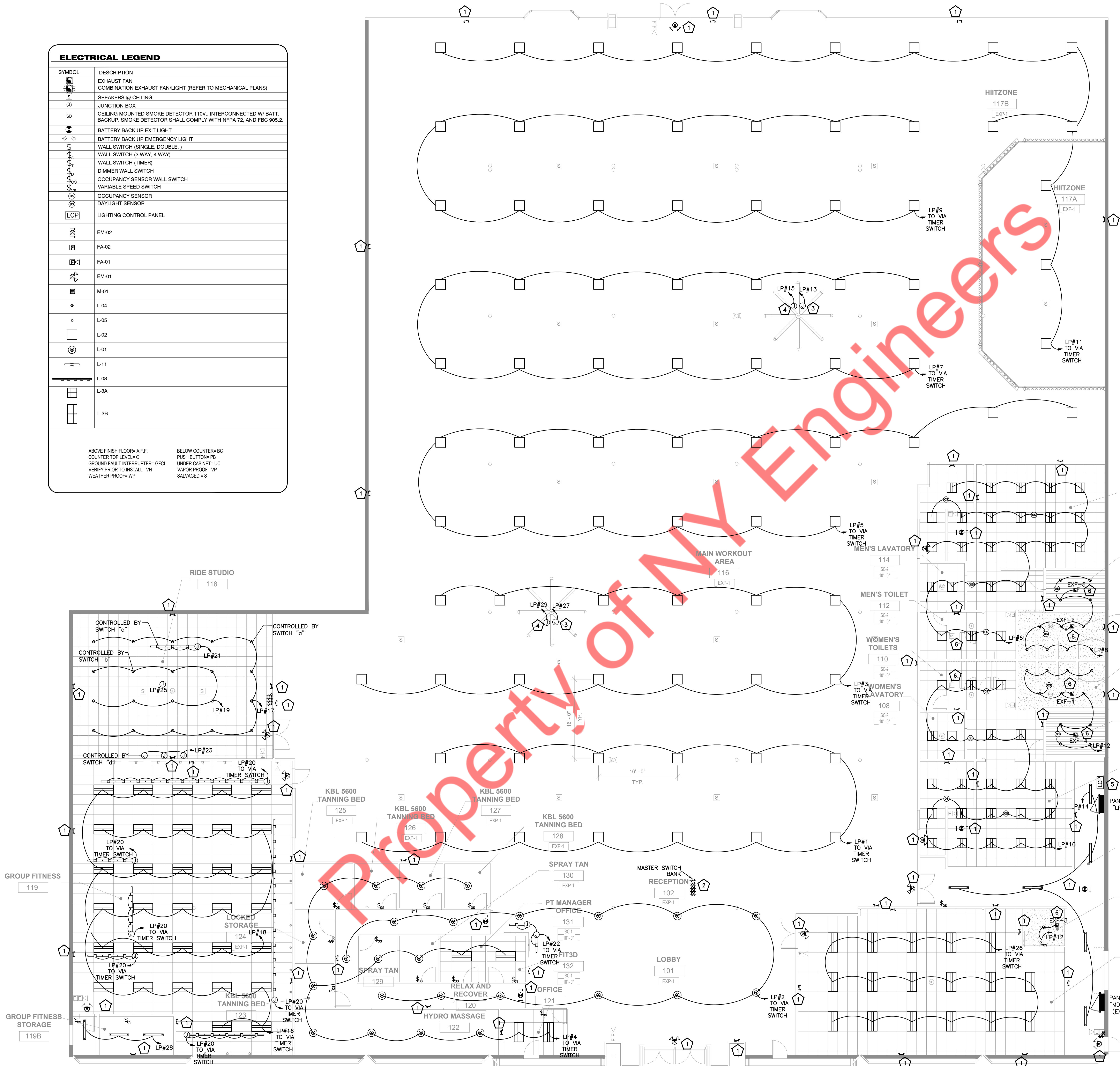
BELOW COUNTER= BC
 PUSH BUTTON= PB
 UNDER CABINET= UC
 VAPOR PROOF= VP
 SALVAGED= S

ELECTRICAL LIGHTING PLAN GENERAL NOTES

- SOME 24 HOUR, 7 DAY-A-WEEK OPERATIONAL FACILITIES DO NOT REQUIRE AUTOMATIC SHUT OFF (TIME CLOCK CONTROLLED) LIGHTING. VERIFY WITH OWNER AND AUTHORITY HAVING JURISDICTION.
- EMERGENCY, EXIT, AND NIGHT LIGHTING SHALL NOT RUN THRU BUILDING SHUTOFF.
- ALL LIGHT FIXTURES NOT ON TIMECLOCK OR OCCUPANCY SENSOR SHALL BE CONTROLLED BY LIGHTING CONTACTOR(S). E.C. SHALL PROVIDE ADDITIONAL CONTACTORS AS REQUIRED.
- COORDINATE MASTER SWITCH BANK LOCATION WITH OWNER/ARCHITECT.
- ALL WIRING SHALL BE THWN RATED FOR 75°C, COPPER.
- ALL SECURITY AND EMERGENCY LIGHTING CIRCUITS, SMOKE DETECTORS, FIRE PROTECTION CIRCUITS AND OTHER CRITICAL SYSTEM CIRCUITS SHALL BE PROVIDED WITH A LOCK-ON DEVICE.

ELECTRICAL LIGHTING PLAN KEYED WORK NOTES

- LIGHTS AND EXIT SIGNS SHALL BE WIRED TO THE HOT LEG OF THE CLOSEST LOCAL LIGHTING CIRCUIT. CONNECT TO BATTERY POWERED EMERGENCY LIGHT AHEAD OF ANY CONTROLS/ SWITCHES.
- MASTER SWITCH BANK LOCATION TO BE AT THE FRONT DESK. ALL LIGHTING IS TO BE CONTROLLED AT FRONT DESK. VERIFY LOCATION, QUANTITY AND STYLE OF SWITCHES WITH OWNER/ARCHITECT.
- PROVIDE DEDICATED POWER FOR BIG ASS FAN, E.C. TO COORDINATE BREAKER SIZE, PLACEMENT AND WIRE SIZE WITH MANUFACTURER PRIOR TO INSTALL. POWER OF FANS TO BE INTERLOCKED TO SHUT DOWN UPON RECEIVING A SIGNAL FROM THE FIRE ALARM SYSTEM.
- POWER FOR FAN LED LIGHTING. VERIFY EXACT REQUIREMENT WITH FAN MANUFACTURER.
- E.C. SHALL COORDINATE EXACT LOCATION OF THE LIGHTING CONTROL PANEL "LCP" WITH ARCHITECT/OWNER.
- EXHAUST FANS SHALL BE CIRCUITED AND CONTROLLED ALONG WITH THE LIGHT FIXTURES IN THE SAME ROOM.



1 ELECTRICAL LIGHTING FLOOR PLAN
 1/8" = 1'-0"

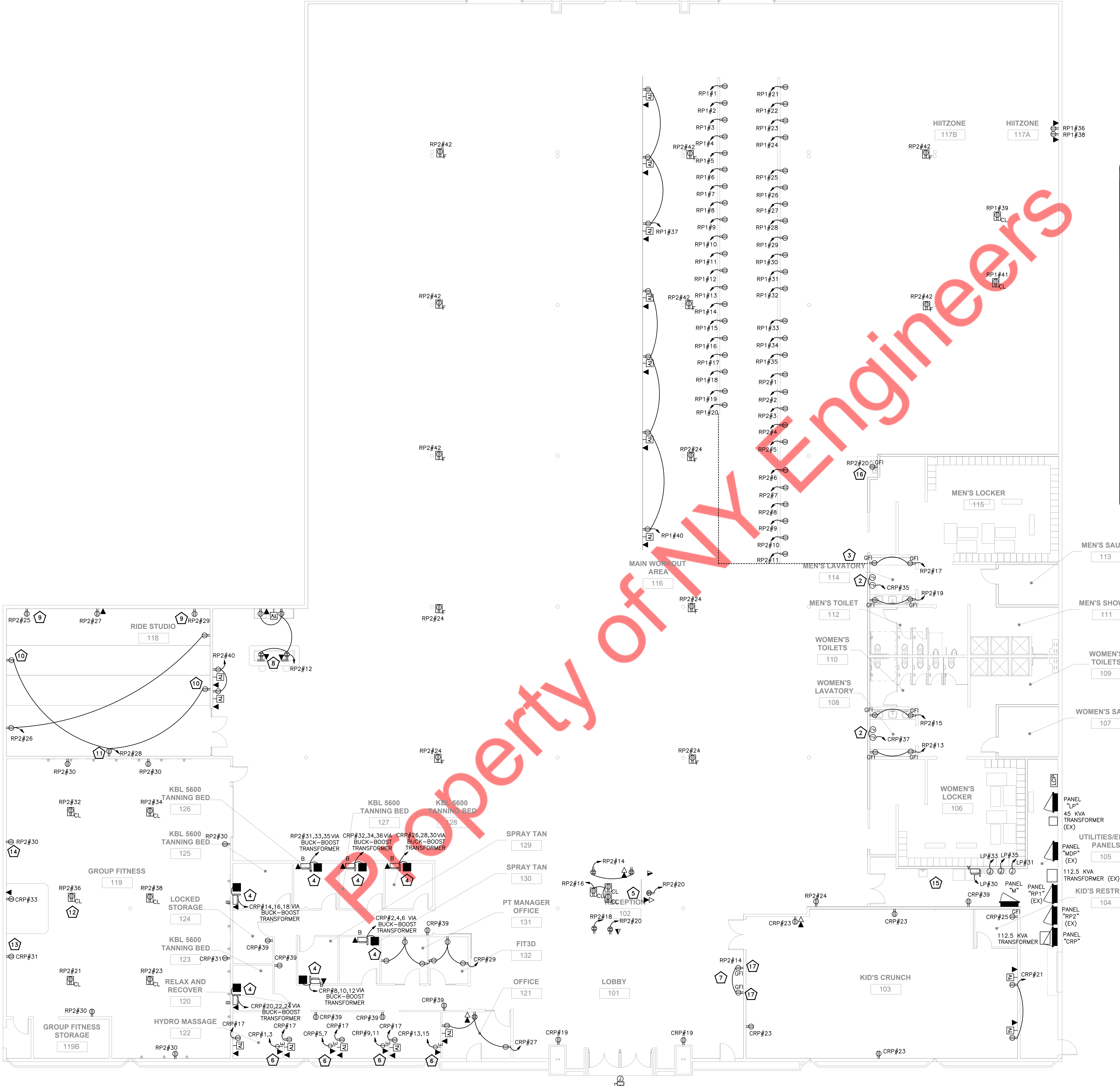
- ### ELECTRICAL POWER PLAN GENERAL NOTES
- E.C. SHALL COORDINATE RECEPTABLES MOUNTING HEIGHT WITH ARCHITECT/OWNER PRIOR TO ROUGH-IN.
 - ALL LOW VOLTAGE WIRING TO BE IN CONDUIT UNLESS OTHERWISE APPROVED BY AUTHORITY HAVING JURISDICTION.
 - ELECTRICIAN TO COORDINATE WITH MECHANICAL CONTRACTOR FOR RTU SENSOR AND THERMOSTAT LOCATIONS.
 - SOME TANNING BEDS ARE AVAILABLE AT MULTIPLE VOLTAGES AND PHASES, AND BED SELECTION IS SUBJECT TO CHANGE. VERIFY EXACT EQUIPMENT REQUIREMENTS OF BEDS DELIVERED TO JOB SITE PRIOR TO PULLING WIRE AND INSTALLING BREAKERS AND DISCONNECTS, OR RE-PULL WIRE AND REPLACE BREAKERS AS NEEDED.
 - FURROUT WALLS AS NEEDED FOR ELECTRICAL CONNECTIONS.
 - ROOF RECEPTABLES SHALL BE GFI/MPWR TYPE.
 - CIRCULATING FANS ARE AVAILABLE IN MULTIPLE VOLTAGES. CONFIRM DISCONNECT AND BREAKER SIZE OF EXACT FANS DELIVERED TO SITE AND MAKE ADJUSTMENTS AS NEEDED.
 - ALL OUTLET AND SWITCH COVERS TO BE BRUSHED NICKEL IN COLOR.
 - PROVIDE 20 AMP RECEPTACLE FOR SPEAKERS(S), COORDINATE EXACT MOUNTING LOCATION AND/OR HEIGHT WITH ARCHITECTURE PLANS/OWNER PRIOR TO ANY ROUGH-IN AND PROVIDE AS DIRECTED.
 - MINIMUM CONDUCTOR SIZE FOR 120V BRANCH CIRCUITS SHALL BE 12-AWG. FOR 120V BRANCH CIRCUITS WITH HOMERUN OVER 100 LINEAR FEET, A MINIMUM WIRE SIZE OF 10-AWG SHALL BE PROVIDED FROM FIRST JUNCTION/OUTLET BOX TO BRANCH CIRCUIT PANELBOARD. FOR 120V BRANCH CIRCUITS WITH HOMERUN OVER 150 LINEAR FEET, A MINIMUM OF 8-AWG SHALL BE PROVIDED FROM FIRST JUNCTION/OUTLET BOX TO BRANCH CIRCUIT PANELBOARD.

- ### ELECTRICAL POWER PLAN KEYED WORK NOTES
- PROVIDE AND INSTALL DISCONNECT FOR TENANT SIGNAGE PER ARTICLE 600.6 OF THE NEC. SIGN BY SIGN VENDOR. CIRCUITING AND FINAL CONNECTION BY ELECTRICAL CONTRACTOR. SIGN CONTROLLED BY TIMELOCK. PROVIDE ADDITIONAL J-BOX FOR PHOTOSENSOR. COORDINATE NUMBER OF CIRCUITS REQUIRED WITH SIGN VENDOR. VERIFY EXACT LOCATION WITH TENANT.
 - PROVIDE AND INSTALL J-BOX FOR POWER TO HAND DRYER AT 42" A.F.F. CIRCUIT AS INDICATED.
 - PROVIDE 5-20 NEMA RECEPTACLE AND DEDICATED CIRCUIT FOR EACH TREADMILL. TRENCH POWER FROM POWER STRIP TO NEAREST COLUMN OR FULL HEIGHT WALL. COMPLY WITH NEC 310.15 IF APPLICABLE. USE 10AWG WIRE MINIMUM. ADJUST WIRE SIZE FOR A MAXIMUM VOLTAGE DROP OF 3%. NO MORE THAN 9 CURRENT CARRYING CONDUCTORS PER CONDUIT.
 - E.C. TO COORDINATE BREAKER SIZE & PLACEMENT, AND WIRE SIZE WITH ACTUAL TANNING BED SPECIFICATIONS AND TANNING BED MANUFACTURER PRIOR TO INSTALL. VERIFY MANUFACTURER, MODEL NUMBER AND QUANTITY WITH TENANT PRIOR TO INSTALL. CONTRACTOR SHALL VERIFY TWIST-LOCK RECEPTACLE WITH MINIMUM 8' OF CORD OR DISCONNECT SIZE & PLACEMENT WITH OWNER PRIOR TO INSTALLATION. CONTRACTOR SHALL ADJUST WIRE SIZE TO LARGER SIZE IF NECESSARY. E.C. TO PROVIDE BUCK BOOSTER TRANSFORMERS AT TANNING BED FOR 250V OPERATION. THE ELECTRICAL SUBCONTRACTOR IS RESPONSIBLE TO MAKE SPECIFICATION SUBMITTALS TO ARCHITECT, VIA GENERAL CONTRACTOR, REGARDING THE TANNING BEDS AND SUBSEQUENT WIRING PRIOR TO BIDDING AND INSTALLATION. E.C. TO PROVIDE BREAKERS LOOKS AS MEANS OF DISCONNECT AT THE PANEL FOR EACH UNIT.
 - ABOVE COUNTER PHONE JACK & RECEPTACLE FOR TANNING BED CONTROL. WIRE TO TIMES AT EACH TANNING ROOM AS REQUIRED. INSTALL PER MANUFACTURER'S RECOMMENDATIONS. COORDINATE REQUIREMENTS WITH OWNER.
 - PROVIDE DEDICATED NEMA L6-30R RECEPTACLE FOR HYDROMASSAGE BED. E.C. TO COORDINATE BREAKER SIZE & PLACEMENT, AND WIRE SIZE WITH ACTUAL HYDROMASSAGE BED SPECIFICATIONS AND HYDROMASSAGE BED MANUFACTURER PRIOR TO INSTALL. VERIFY MANUFACTURER, MODEL NUMBER AND QUANTITY WITH TENANT PRIOR TO INSTALL.
 - PROVIDE DEDICATED GFCI RECEPTACLE PER MANUFACTURER'S RECOMMENDATION FOR VENDING MACHINES. VERIFY MANUFACTURER, MODEL NUMBER, AND QUANTITY WITH TENANT PRIOR TO INSTALL.
 - VERIFY DATA REQUIREMENTS AT PERSONAL TRAINING STATIONS WITH TENANT REPRESENTATIVE.
 - SPEAKER BACKING STAGE SIDE LEFT AND RIGHT CORNERS - 28" CENTER DOWN FROM ACOUSTICAL CEILING HEIGHT.
 - POWER FOR ROPE LIGHTING AT STEP RISERS. VERIFY REQUIREMENTS WITH INSTALLATION INSTRUCTIONS.
 - 18" A.F.F. TO CENTER WITH 1" CONDUIT TO CEILING SPACE.
 - SPEAKER MOUNT 28" CENTER DOWN FROM ACOUSTICAL CEILING HEIGHT; TYPICAL (6) IN GROUP FITNESS.
 - SINGLE RECESSED RECEPTACLE FOR DIGITAL CLOCK. VERIFY LOCATION AND HEIGHT WITH TENANT. TYPICAL AT CLOCKS.
 - 10" A.F.F. TO CENTER (MOUNTED HORIZONTALLY) WITH 1" CONDUIT TO CEILING SPACE.
 - PROVIDE (3) 3/4" CONDUITS FROM RAISED CURB TO TELEPHONE BOARD IN UTILITY ROOM. RECESSED CONDUIT IN FLOOR SLAB TO VERTICAL RISER. FIELD DEVELOP CEILING SPACE HORIZONTAL DISTRIBUTION WITH PULL BOXES EVERY 270 DEGREES OF CONDUIT TURNS CONDUIT STUB DOWN AT TELEPHONE BOARD.
 - E.C. TO MOUNT RECEPTACLE PER MANUFACTURER'S TEMPLATE. GFI RECEPTACLE TO BE MOUNTED BELOW DRINKING FOUNTAIN PER NEC.
 - FURNISH AND INSTALL 2" CONDUIT RISER TO CEILING SPACE WITH GROMMET END.

ELECTRICAL LEGEND

SYMBOL	DESCRIPTION
	EXHAUST FAN
	COMBINATION EXHAUST FAN/LIGHT (REFER TO MECHANICAL PLANS)
	SPEAKERS @ CEILING
	JUNCTION BOX
	CEILING MOUNTED SMOKE DETECTOR 110V, INTERCONNECTED W/ BATT. BACKUP. SMOKE DETECTOR SHALL COMPLY WITH NFPA 72, AND FBC 905.2.
	BATTERY BACK UP EXIT LIGHT
	BATTERY BACK UP EMERGENCY LIGHT
	WALL SWITCH (SINGLE, DOUBLE,) WALL SWITCH (3 WAY, 4 WAY) WALL SWITCH (TIMER) DIMMER WALL SWITCH
	OCCUPANCY SENSOR WALL SWITCH
	VARIABLE SPEED SWITCH
	SIMPLEX RECEPTACLE, +18" AFF OR AS NOTED. SUFFIX DENOTES FOLLOWING: A - NEMA 5-15R B - NEMA 6-15R C - NEMA 14-30R D - NEMA 14-50R E - NEMA L6-30R
	DUPLEX RECEPTACLE
	DUPLEX RECEPTACLE, 46" TO AFF AT KITCHEN, BATHS AND TOPS
	HALF SWITCHED DUPLEX RECEPTACLE
	230 VOLT RECEPTACLE
	QUADRUPLEX RECEPTACLE
	FLOOR MOUNTED, FLUSH DUPLEX RECEPTACLE
	FLOOR MOUNTED, FLUSH QUAD. RECEPTACLE
	FLOOR MOUNTED, FLUSH 230 VOLT RECEPTACLE
	CEILING MOUNTED DUPLEX RECEPTACLE
	ELECTRICAL PANEL
	DISCONNECT SWITCH
	USB CHARGER RECEPTACLE
	TELEVISION OUTLET
	TELEPHONE OUTLET
	DATA OUTLET
	FLOOR MTD. FLUSH TELEPHONE/DATA OUTLET
	QUAD. DATA OUTLET RJ45
	THERMOSTAT DEVICE
	AC OUTDOOR UNIT MOTOR AS NOTED WITH WEATHERPROOF CONTROLLER AND DISCONNECT SWITCH WITH
	NON FUSED DISCONNECT SWITCH AMPERAGE AND NUMBER OF POLES AS NOTED
	30A/240V NON FUSED DISCONNECT SWITCH
	60A/240V NON FUSED DISCONNECT SWITCH
	100A/240V NON FUSED DISCONNECT SWITCH
	2000A/240V NON FUSED DISCONNECT SWITCH
	BUCK-BOOST TRANSFORMER 208V/235V

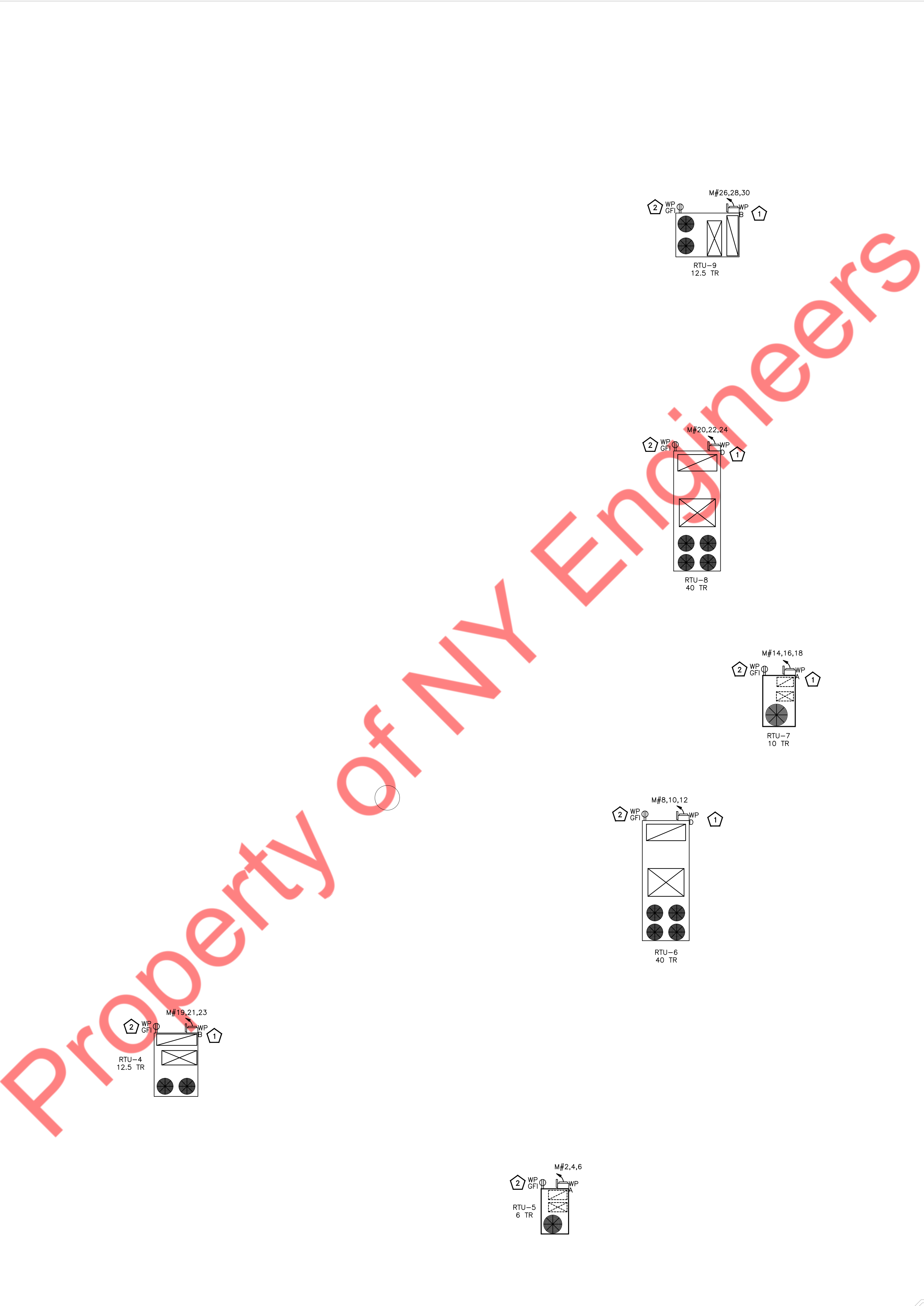
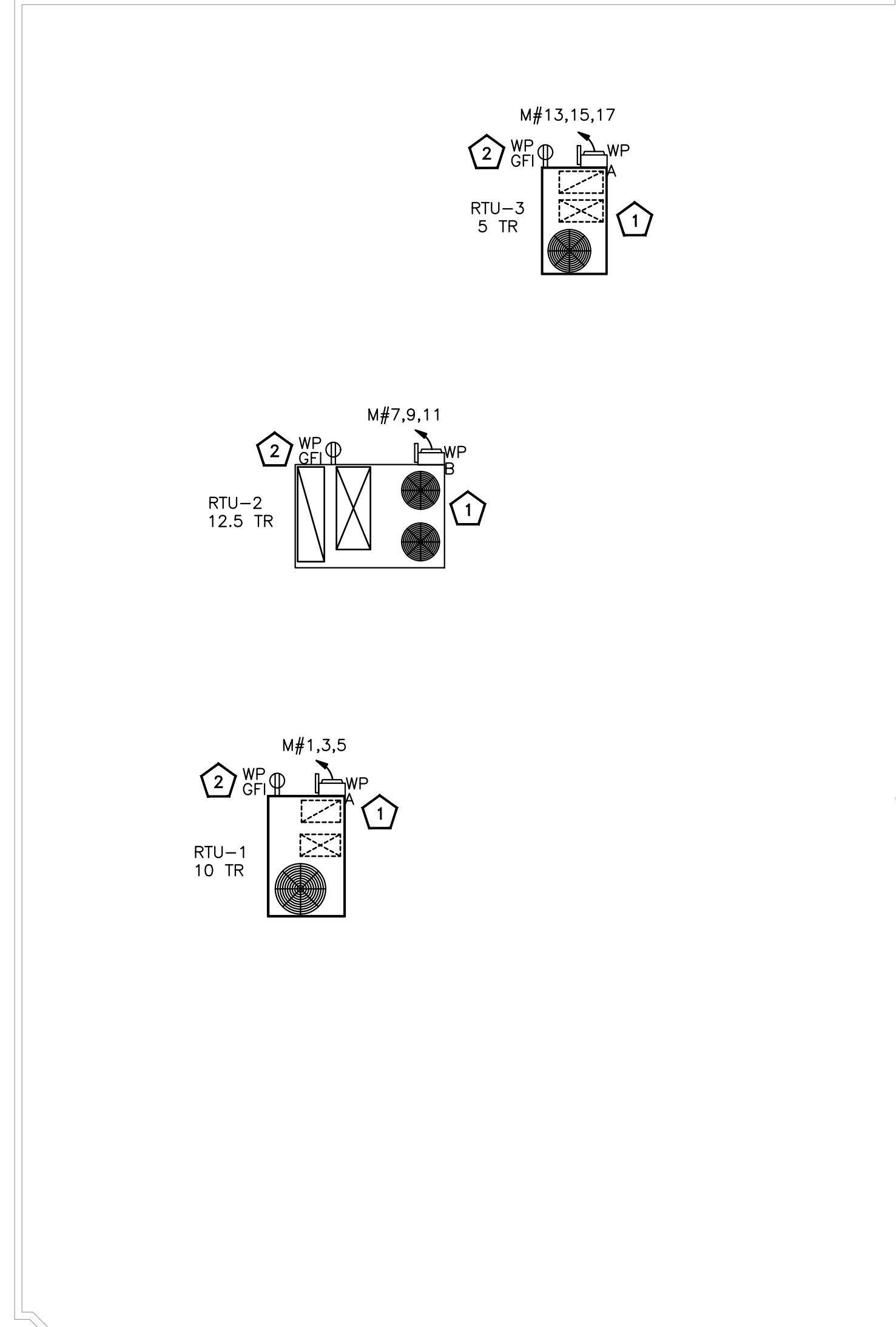
ABBREVIATIONS:
 ABOVE FINISH FLOOR= A.F.F.
 COUNTER TOP LEVEL= C
 GROUND FAULT INTERRUPTER= GFCI
 VERIFY PRIOR TO INSTALL= VH
 WEATHER PROOF= WP
 BELOW COUNTER= BC
 PUSH BUTTON= PB
 UNDER CABINET= UC
 VAPOR PROOF= VP
 SALVAGED= S



1 ELECTRICAL POWER FLOOR PLAN
 1/8" = 1'-0"

ELECTRICAL ROOF POWER PLAN KEYED WORK NOTES

- 1 ELECTRICAL CONTRACTOR SHALL COORDINATE DISCONNECT AND FUSE REQUIREMENT FOR MECHANICAL UNIT WITH MECHANICAL CONTRACTOR AND EQUIPMENT MANUFACTURER PRIOR TO ROUGH-IN AND PROVIDE AS REQUIRED. COORDINATE LOCATION OF DISCONNECT WITH MANUFACTURER AND MECHANICAL CONTRACTOR PRIOR TO ROUGH-IN. LOCATE AS REQUIRED TO MAINTAIN NEC CLEARANCES.
- 2 FACTORY PROVIDED RECEPTACLE ON RTU UNIT. RECEPTACLE SHALL BE POWERED THROUGH RTU.



ELECTRICAL LEGEND

SYMBOL	DESCRIPTION
	EXHAUST FAN
	COMBINATION EXHAUST FAN/LIGHT (REFER TO MECHANICAL PLANS)
	SPEAKERS @ CEILING
	JUNCTION BOX
	CEILING MOUNTED SMOKE DETECTOR 110V, INTERCONNECTED W/ BATT. BACKUP. SMOKE DETECTOR SHALL COMPLY WITH NFPA 72, AND FBC 905.2.
	BATTERY BACK UP EXIT LIGHT
	BATTERY BACK UP EMERGENCY LIGHT
	WALL SWITCH (SINGLE, DOUBLE,)
	WALL SWITCH (3 WAY, 4 WAY)
	WALL SWITCH (TIMER)
	DIMMER WALL SWITCH
	OCCUPANCY SENSOR WALL SWITCH
	VARIABLE SPEED SWITCH
	SIMPLEX RECEPTACLE, + 18" AFF OR AS NOTED. SUFFIX DENOTES FOLLOWING: A - NEMA 5-15R B - NEMA 6-15R C - NEMA 14-30R D - NEMA 14-50R E - NEMA L6-30R
	DUPLEX RECEPTACLE
	DUPLEX RECEPTACLE, 46" TO AFF AT KITCHEN, BATHS AND TOPS
	HALF SWITCHED DUPLEX RECEPTACLE
	230 VOLT RECEPTACLE
	QUADRUPLEX RECEPTACLE
	FLOOR MOUNTED, FLUSH DUPLEX RECEPTACLE
	FLOOR MOUNTED, FLUSH QUAD. RECEPTACLE
	FLOOR MOUNTED, FLUSH 230 VOLT RECEPTACLE
	CEILING MOUNTED DUPLEX RECEPTACLE
	ELECTRICAL PANEL
	DISCONNECT SWITCH
	USB CHARGER RECEPTACLE
	TELEVISION OUTLET
	TELEPHONE OUTLET
	TELEPHONE/DATA OUTLET
	DATA OUTLET
	FLOOR MTD. FLUSH TELEPHONE/DATA OUTLET
	QUAD. DATA OUTLET RJ45
	THERMOSTAT DEVICE
	AC OUTDOOR UNIT MOTOR AS NOTED WITH WEATHERPROOF CONTROLLER AND DISCONNECT SWITCH WITH
	NON FUSED DISCONNECT SWITCH AMPERAGE, AND NUMBER OF POLES AS NOTED
	30A/240V NON FUSED DISCONNECT SWITCH
	60A/240V NON FUSED DISCONNECT SWITCH
	100A/240V NON FUSED DISCONNECT SWITCH
	200A/240V NON FUSED DISCONNECT SWITCH
	BUCK - BOOST TRANSFORMER 208V/235V
ABBREVIATIONS:	
ABOVE FINISH FLOOR= A.F.F.	BELOW COUNTER= BC
COUNTER TOP LEVEL= C	PUSH BUTTON= PB
GROUND FAULT INTERRUPTER= GFCI	UNDER CABINET= UC
VERIFY PRIOR TO INSTALL= VH	VAPOR PROOF= VP
WEATHER PROOF= WP	SALVAGED= S

1 **ELECTRICAL ROOF POWER FLOOR PLAN**
1/8" = 1'-0"