

1 PLUMBING FLOOR PLAN
3/8" = 1'-0"

FIXTURE UNIT COUNT							
ITEM	DESCRIPTION	QTY.	TRAP SIZE	D.F.U.	TOTAL D.F.U.	W.S.F.U.	TOTAL W.S.F.U.
P-1	WATER CLOSET (TANK TYPE)	1	3"	4.0	4.00	10.00	10.00
P-2	LAVATORY	1	1.5"	2.0	2.00	2.00	2.00
P-3	MOP SINK	1	2"	2.0	2.00	3.00	3.00
P-4	DRINKING FOUNTAIN	2	1.5"	0.5	1.00	0.50	1.00
TOTAL FIXTURE UNITS:					9.00		16.00
W.S.F.U.		16.0 FU = 18.0 GPM					
D.F.U. SAN		9.0 DFU = 3" PIPING HORIZONTAL @ 1/8" PER FOOT SLOPE					

ELECTRIC STORAGE WATER HEATER SCHEDULE											
HEATER TAG	NO. OF ELEMENTS	LOCATION	MAX. INPUT (kW)	STORAGE CAPACITY (GAL)	RECOVERY CAPACITY (GPH) @100° F RISE	TYPE	ELECTRICAL CHARACTERISTICS CONTROL	NO. OF HEATERS	EFFICIENCY (%)	MANUFACTURE R & MODEL NO.	REMARKS
WH-1	1	ABOVE MOP SINK	1.5	10	6	ELECTRIC	208V/1Ø/60Hz	1	90	A.O.SMITH MODEL DEL-10	-DIMENSIONS: 18" DIA X 19" HIGH -PROVIDE ET-1 AS PER SCHEDULE -CEILING MOUNTED HEATER

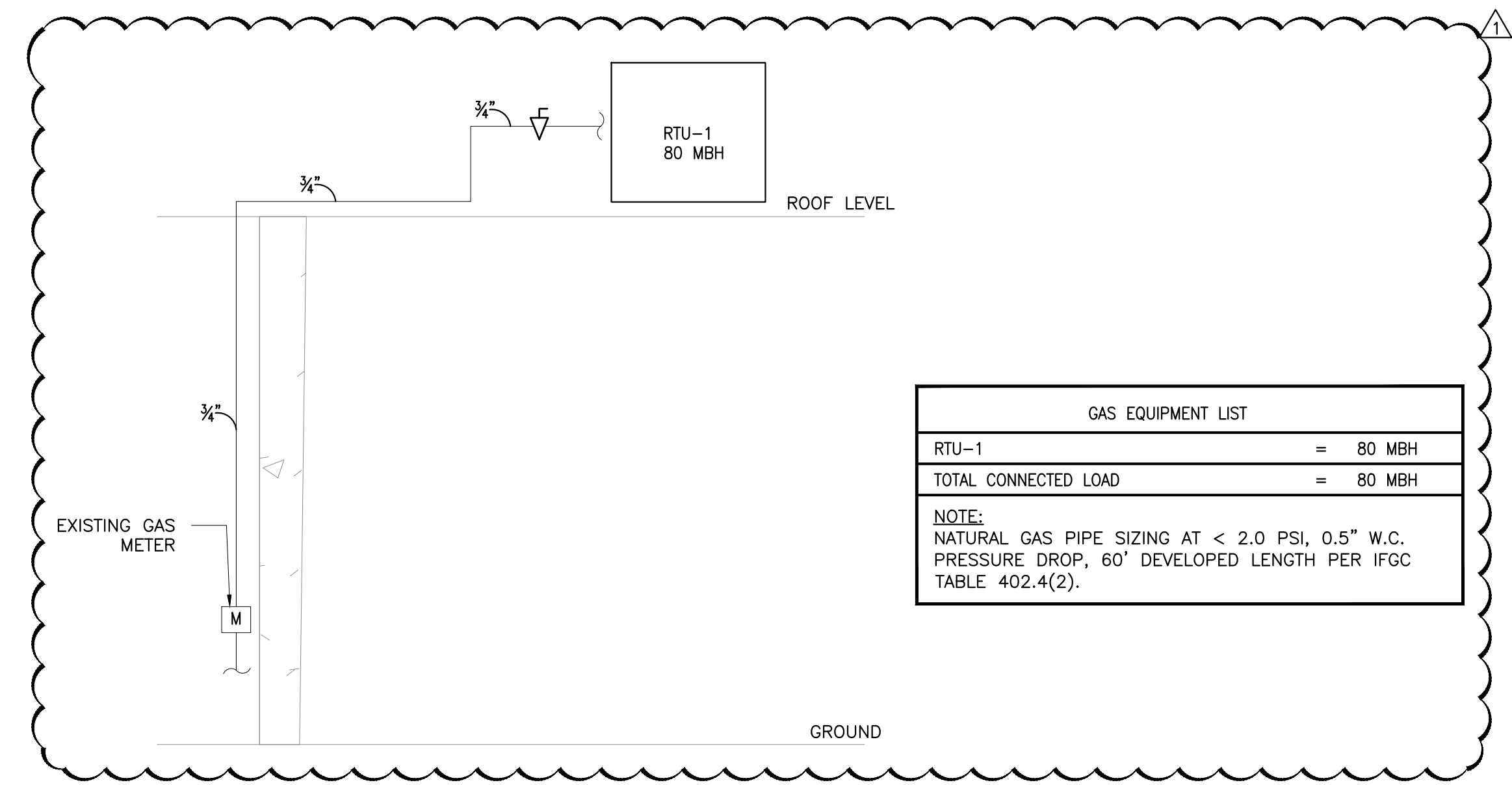
NOTE: NSF RATED. PROVIDE CONDENSATE COLLECTOR, DRAIN TO MOP SINK. PROVIDE WITH VACUUM RELIEF VALVE. MOUNT ON CEILING & COORDINATE EXACT LOCATION WITH OWNER IN FIELD.
PIPE INSULATION : PROVIDE HOT WATER PIPING WITH 1" INSULATION HAVING CONDUCTIVITY OF MINIMUM OF 0.27 BTU PER INCH.

EXPANSION TANK SCHEDULE							
TAG	LOCATION	SERVICE	CAPACITY (GALLONS)	MANUFACTURER & MODEL	DIMENSION (DIA X HEIGHT)	WEIGHT (LBS)	NO. OF EXPANSION TANK
ET-1	REFER FLOOR PLANS	HW	2	THERM-X-TROL ST-5	8" X 13"	5	1

PLUMBING FIXTURE SCHEDULE						
FIXTURE NO	TYPE	DIRECT WASTE	INDIRECT WASTE	VENT	CW	HW
P-1	WATER CLOSET	3"	-	2"	1"	-
P-2	LAVATORY	2"	-	1-1/2"	1/2"	1/2"
P-3	MOP SINK	2"	-	2"	3/4"	3/4"
P-4	BI-LEVEL DRINKING FOUNTAIN	2"	-	1-1/2"	1/2"	-

NOTE: ALL FIXTURE MAY BE SUBSTITUTED WITH APPROVED EQUAL. CONTACT OWNER FOR APPROVAL

- KEYNOTES:**
- EXISTING WATER CLOSET TO BE REPLACED IN KIND WITH NEW WATER CLOSET. CONNECT NEW WATER CLOSET TO EXISTING CW, SANITARY, VENT LINES WITH ASSOCIATED ACCESSORIES AND FITTINGS.
 - EXISTING LAVATORY TO BE REPLACED IN KIND WITH NEW LAVATORY. CONNECT NEW LAVATORY TO EXISTING CW, HW, SANITARY, VENT LINES WITH ASSOCIATED ACCESSORIES AND FITTINGS.
 - CONNECT NEW DRINKING FOUNTAIN TO EXISTING NEARBY CW, SANITARY, VENT LINES.
 - EXISTING MOP SINK TO BE REPLACED IN KIND WITH NEW MOP SINK. CONNECT NEW MOP SINK TO EXISTING CW, HW, SANITARY, VENT LINES WITH ASSOCIATED ACCESSORIES AND FITTINGS.
 - CONTRACTOR TO FIELD VERIFY ALL PIPE SIZES AND CHANGE TO ADEQUATE SIZES AS PER PLUMBING FIXTURE SCHEDULE IF NECESSARY.
 - CONTRACTOR TO DEMOLISH EXISTING HOT WATER HEATER AND REPLACE IT WITH NEW WATER HEATER AS SPECIFIED. CONNECT NEW HOT WATER HEATER TO EXISTING PIPING. CONTRACTOR TO FIELD VERIFY EXACT PIPING LOCATIONS.
 - CONTRACTOR TO FIELD VERIFY AND CONNECT EXISTING GAS PIPE TO RTU-1. CONTRACTOR TO FIELD VERIFY EXISTING AVAILABLE GAS PRESSURE AND MAKE SURE TO PROVIDE ADEQUATE INLET PRESSURE REQUIRED FOR RTU-1.
 - TEMPERED WATER SHALL BE DELIVERED FROM LAVATORIES LOCATED IN PUBLIC TOILET FACILITIES. TEMPERED WATER SHALL BE DELIVERED THROUGH AN APPROVED WATER-TEMPERATURE LIMITING DEVICE THAT CONFORMS TO ASSE 1070 OR CSA B125.3.
 - EXISTING GAS METER. CONTRACTOR TO FIELD VERIFY SIZE AND LOCATION IN FIELD.

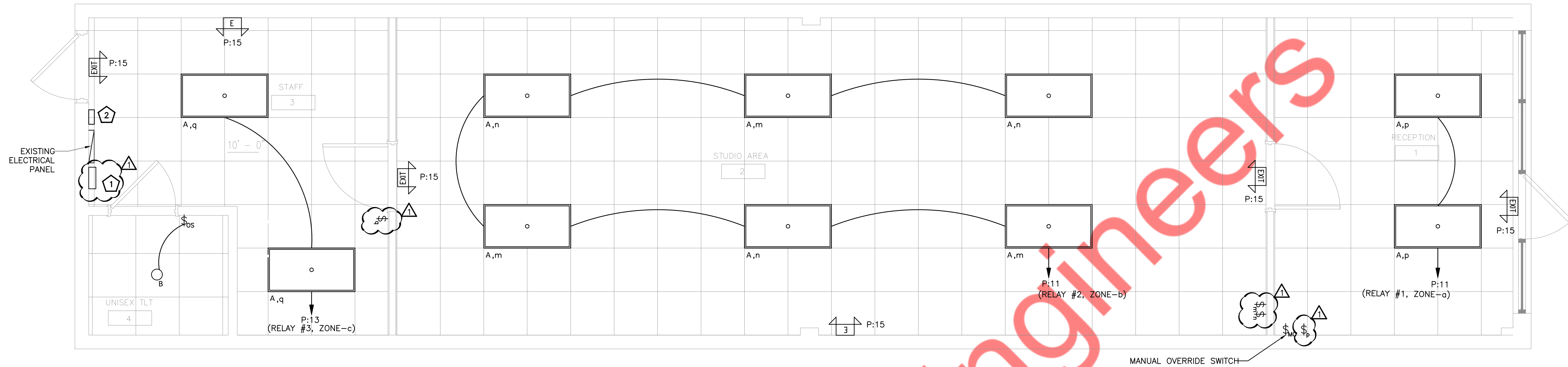


GAS EQUIPMENT LIST	
RTU-1	= 80 MBH
TOTAL CONNECTED LOAD	= 80 MBH

NOTE:
NATURAL GAS PIPE SIZING AT < 2.0 PSI, 0.5" W.C. PRESSURE DROP, 60' DEVELOPED LENGTH PER IFGC TABLE 402.4(2).

2 GAS RISER DIAGRAM
NTS

IONIC DESIGN STUDIOS HEREBY EXPRESSLY RESERVES THE COMMON LAW COPYRIGHT AND OTHER PROPERTY RIGHTS IN THESE PLANS. THIS DESIGN AND DRAWINGS ARE NOT TO BE REPRODUCED, CHANGED OR COPIED IN ANY FORM OR MANNER WHATSOEVER WITHOUT FIRST WRITTEN PERMISSION AND CONSENT OF IONIC DESIGN STUDIOS NOR ARE THEY TO BE ASSIGNED TO ANY PARTY WITHOUT FIRST WRITTEN PERMISSION AND CONSENT.



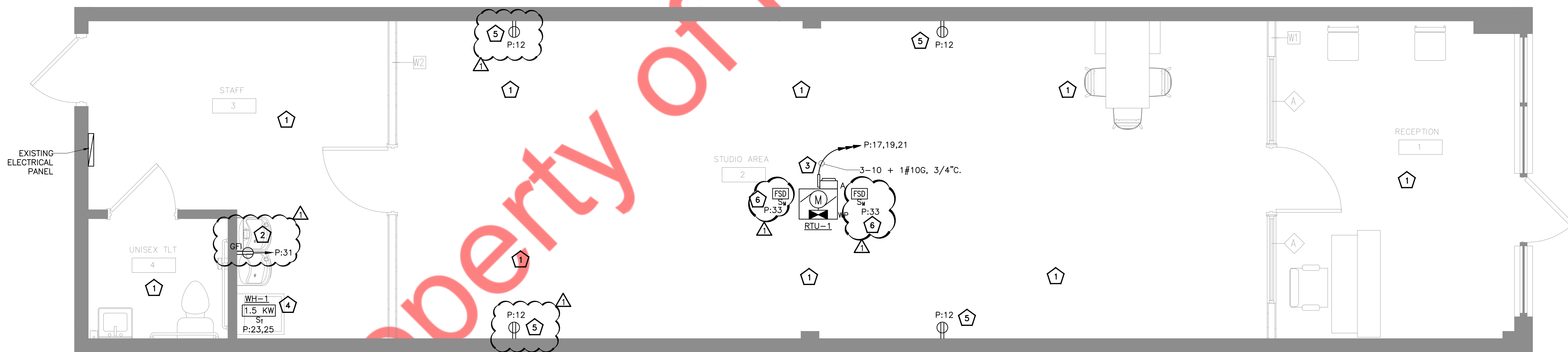
1 LIGHTING PLAN
SCALE: 3/8" = 1'-0"

ELECTRICAL LIGHTING PLAN KEYED WORK NOTES:

- 1 RELAY ENCLOSURE FOR LIGHTING CONTROLS. SEE SCHEDULE ON E0.1 DRAWING FOR ADDITIONAL INFORMATION. CONNECT TO EXISTING PANEL P, CKT#29. COORDINATE LOCATION OF LCP PANEL WITH ARCHITECT/OWNER.
- 2 LOCATION OF ET1125C SERIES 24-HOUR ELECTRONIC TIME SWITCH (3.1"x5.3"x8"). SEE SCHEDULE ON E0.1 SHEET FOR ADDITIONAL INFORMATION.

LIGHTING & POWER NOTES

- 1. REFER TO DWG. E0.1 FOR ELECTRICAL LEGENDS, NOTES, ABBREVIATIONS, RISER DIAGRAM & PANEL SCHEDULE.
- 2. ALL ELECTRICAL WIRING INSIDE THE PLENUM SHALL BE FIREPROOF.



2 POWER PLAN
SCALE: 3/8" = 1'-0"

ELECTRICAL POWER PLAN KEYED WORK NOTES:

- 1 ALL EXISTING ELECTRICAL OUTLETS IN THIS AREA SHALL BE REPLACED WITH NEW COMMERCIAL GRADE RECEPTACLES. BASE BID ACCORDINGLY. E.C. SHALL COORDINATE WITH ARCHITECT/OWNER.
- 2 NEW DRINKING FOUNTAIN TO REPLACE EXISTING. CONTRACTOR TO PROVIDE NEW 20A, 120V RECEPTACLE AS SHOWN.
- 3 RTU-1 SHALL BE LOCATED ON ROOF. E.C. SHALL COORDINATE WITH MECHANICAL DRAWINGS FOR EXACT LOCATION.
- 4 NEW ELECTRICAL WATER HEATER (1.5KW, 208V, 1-PHASE). COORDINATE WITH PLUMBING DRAWINGS FOR EXACT LOCATION.
- 5 NEW ELECTRICAL OUTLETS IN THE STUDIO AREA. E.C. SHALL COORDINATE WITH OWNER FOR EXACT LOCATIONS.
- 6 ELECTRICAL CONTRACTOR SHALL COORDINATE EXACT POWER REQUIREMENTS AND LOCATION OF THE FIRE SMOKE DAMPERS WITH MECHANICAL DRAWINGS.