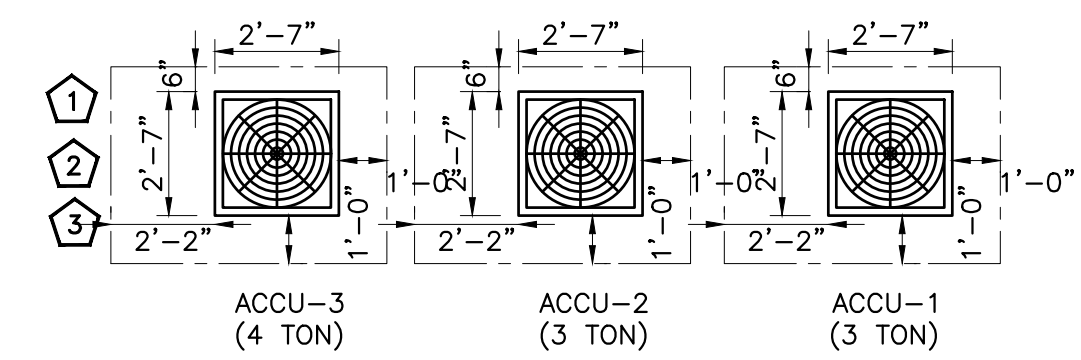


1 MECHANICAL FLOOR PLAN  
1/4" = 1'-0"

- MECHANICAL GENERAL NOTES**
- CONTRACTOR SHALL BALANCE EACH AIR DIFFUSER WITH THE CFM SHOWN PLAN.
  - DUCTWORK SHOWN ON PLAN ARE SCHEMATIC ONLY. CONTRACTOR SHALL COORDINATE WITH OTHER TRADES FOR DUCTWORK ROUTING, OFFSET AND RUN PIPING, DUCTWORK INSIDE THE STRUCTURE IF REQUIRED. PROVIDE ANY EXTRA DUCTWORK, FITTINGS, INSULATIONS AND OTHER ACCESSORIES IN ORDER TO COMPLETE THE INSTALLATION.
  - COORDINATE LOCATIONS AND SIZES OF ROOF OPENINGS WITH OWNER AND STRUCTURE ENGINEERS.
  - EQUIPMENT SIZES, DIMENSIONS AND REQUIRED CONNECTIONS SHALL BE VERIFIED WITH THE ACTUAL EQUIPMENT SELECTED VENDOR DRAWINGS BEFORE FABRICATION OF DUCTWORK, PIPING ETC. DUCT SIZES SHOWN ON PLANS ARE CLEAR INSIDE AIR STREAM DIMENSIONS.
  - CONTRACTOR SHALL COORDINATE ALL ELECTRICAL REQUIREMENTS FOR ALL HVAC BASED ON ACTUAL EQUIPMENT SELECTED PRIOR TO INSTALLATION.
  - CONTRACTOR SHALL COORDINATE EQUIPMENT WEIGHTS AND SUPPORTS BASED ON ACTUAL EQUIPMENT SELECTED.
  - ALL EXPOSED DUCTWORK SHALL BE AS SHOWN, DOUBLE WALL, INSULATED METAL, PRIMED FOR PAINTING. ALL CONCEALED DUCTWORK SHALL BE INSULATED METAL RECTANGULAR AND CIRCULAR DUCT SHALL BE INSULATED INTERNALLY UNLESS OTHERWISE ALLOWED IN WRITING BY THE ENGINEER OF RECORD. COORDINATE FINAL FINISH WITH ARCHITECT.
  - COORDINATE WITH ALL TRADES FOR MATERIALS IN RATED AND PLENUM SPACES.
  - ALL EXHAUST FANS SCHEDULED TO BE AUTOMATICALLY CONTROLLED BY MECHANICAL AIR HANDLERS SHALL BE CONNECTED BY MEANS OF AN AUXILIARY RELAY. PROVIDE AUXILIARY RELAY AS NEEDED.
  - ALL SOURCE OF MECHANICAL INTAKE SHALL MAINTAIN 10 LINEAR FEET SEPARATION BETWEEN ANY SOURCE OF EXHAUST. CONTRACTOR IS RESPONSIBLE TO ADJUST DUCT LENGTH AS NEEDED.
  - PROVIDE R-8 INSULATION WITH 2" THICKNESS FOR ALL OUTDOOR AIR INTAKE DUCTS & VENTS.
- MECHANICAL PLAN KEY NOTES:**
- LOCATION OF DIGITAL THERMOSTAT CONTROL. INSTALL AND WIRE NEW 7-DAY PROGRAMMABLE THERMOSTAT FOR AHU-1,2,3. COORDINATE EXACT LOCATION WITH ARCHITECT AND OWNER PRIOR TO ROUGH-IN. PROVIDE LOCKABLE COVER.
  - CEILING MOUNTED EXHAUST FAN. INTERCONNECT EXHAUST FAN WITH LIGHTS IN THIS ROOM. REFER TO ELECTRICAL LIGHTING PLAN. FAN SHALL BE SUSPENDED FROM STRUCTURE ABOVE. VERIFY EXACT LOCATION OF STRUCTURAL MEMBERS PRIOR TO INSTALLATION.
  - CEILING MOUNTED EXHAUST FAN. INTERCONNECT EXHAUST FAN WITH T-STAT AND SET CUT-ON TEMP TO 80°F. FAN SHALL BE SUSPENDED FROM STRUCTURE ABOVE. VERIFY EXACT LOCATION OF STRUCTURAL MEMBERS PRIOR TO INSTALLATION. PROVIDE WALL CAP EQUAL TO LOREN COOK WCR6-ALUM AND INSTALL BOTTOM OF WALL CAP AT SAME HEIGHT AS EXHAUST FAN.
  - IF REQUIRED, PROVIDE CONDENSATE PUMP. CONNECT 1" CD FROM AHU TO NEAREST FLOOR DRAIN WITH AIR GAP FITTING.
  - PROVIDE REMOTE TEMP SENSOR MOUNTED IN RETURN DUCT AND WIRE BACK TO T-STAT IN CHECK-IN ROOM.
  - EXTEND FULL SIZE SUPPLY & RETURN DUCTWORK TO SPACE. EXTEND AS SHOWN. ACOUSTICALLY LINE THE FIRST 10'-0" OF BOTH SUPPLY AND RETURN MAIN DUCTS.
  - PROVIDE ACOUSTICAL JACKET TO AHU. PROVIDE SECONDARY DRIP PAN UNDER AC UNIT WITH WATER LEAKAGE SENSOR AND ALARM TO SHUT THE UNIT.
  - PROVIDE GAS VENTS AND AIR INTAKES TO ALL AHUS AS PER SITE CONDITIONS AND REQUIREMENT BY MANUFACTURER. MAINTAIN MIN. 10 FT. DISTANCE BETWEEN AIR INTAKE AND EXHAUST VENT.
  - INSTALL REFRIGERANT PIPING BETWEEN INDOOR AND OUTDOOR UNIT. PROVIDE INSULATION TO REF PIPING AS PER ENERGY CONSERVATION CODE.
- MECHANICAL ROOF PLAN KEY NOTES:**
- INSTALL OUTDOOR CONDENSING UNITS ON THE ROOF WITH ALL REQUIRED ACCESSORIES. COORDINATE EXACT LOCATION IN FIELD. PROVIDE STRUCTURAL SUPPORT AS REQUIRED.
  - COORDINATE FINAL LOCATION OF EQUIPMENT WITH STRUCTURAL DRAWINGS AND SITE CONDITIONS.
  - CONDENSER ON CONCRETE PAD WITH VIBRATION ISOLATORS.



2 MECHANICAL ROOF PLAN  
1/4" = 1'-0"