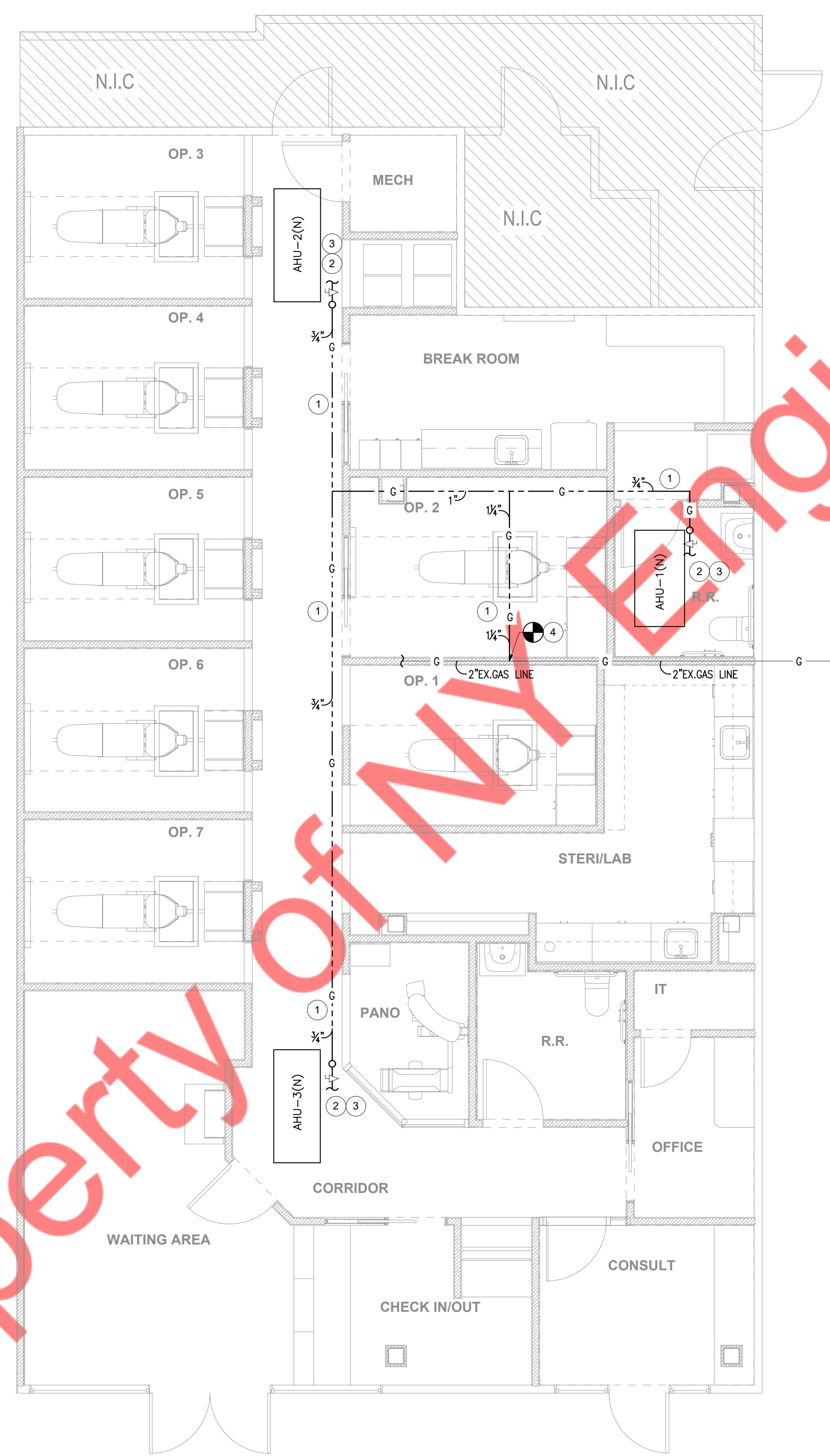


- DOMESTIC WATER PIPING PLAN NOTES:**
- 1 ROUTE NEW 1/2" CW PIPING WITH SHUT OFF VALVE AND TIE-INTO THE EXISTING 1/2" WATER SERVICE. CONTRACTOR TO FIELD VERIFY SIZE, ROUTING, WATER SUB METER AND BACKFLOW PREVENTER REQUIREMENTS WITH LANDLORD PRIOR TO BID.
  - 2 PROVIDE REDUCE PRESSURE ZONE BACKFLOW PREVENTER CONFORMING WITH ASSE1013 OR LOCAL CODE AMENDMENTS. PROVIDE ACCESS PANEL WHERE LOCATED IN AN INACCESSIBLE CEILING. PAINT TO MATCH CEILING. ROUTE WATER OUTLET TO NEAREST FLOOR SINK.
  - 3 TRAP PRIMER (TP-1) EXTEND AND CONNECT 1/2" TRAP PRIMER PIPING TO FLOOR DRAINS WITH TRAP PRIMER CONNECTIONS. COORDINATE ROUTING.
  - 4 PROVIDE ACCESS PANELS FOR WATER HAMMER ARRESTORS, CLEANOUTS & SHUT-OFF VALVES AS REQUIRED.
  - 5 ROUTE T&P RELIEF TO DRAIN IN FLOOR DRAIN/FLOOR SINK.

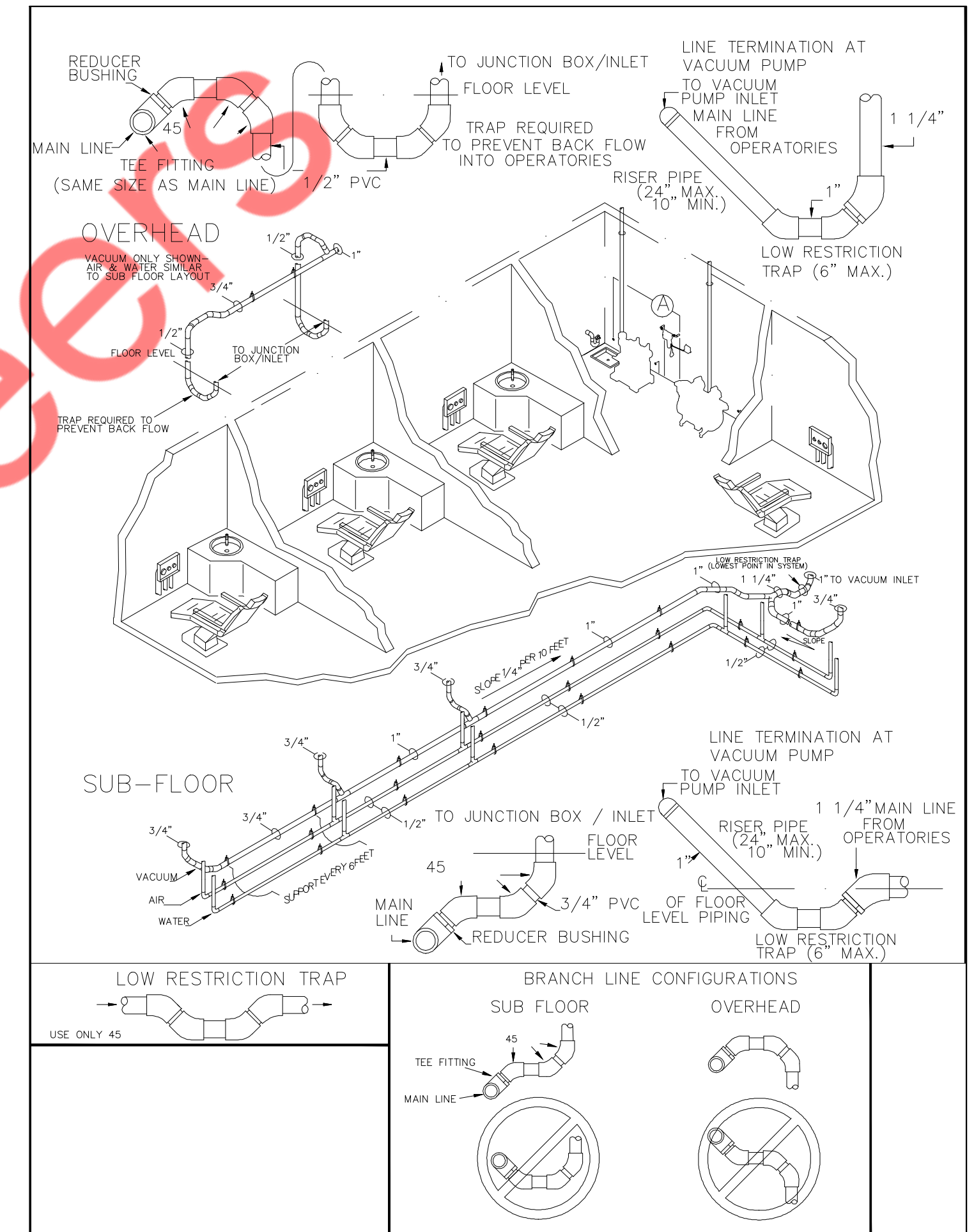
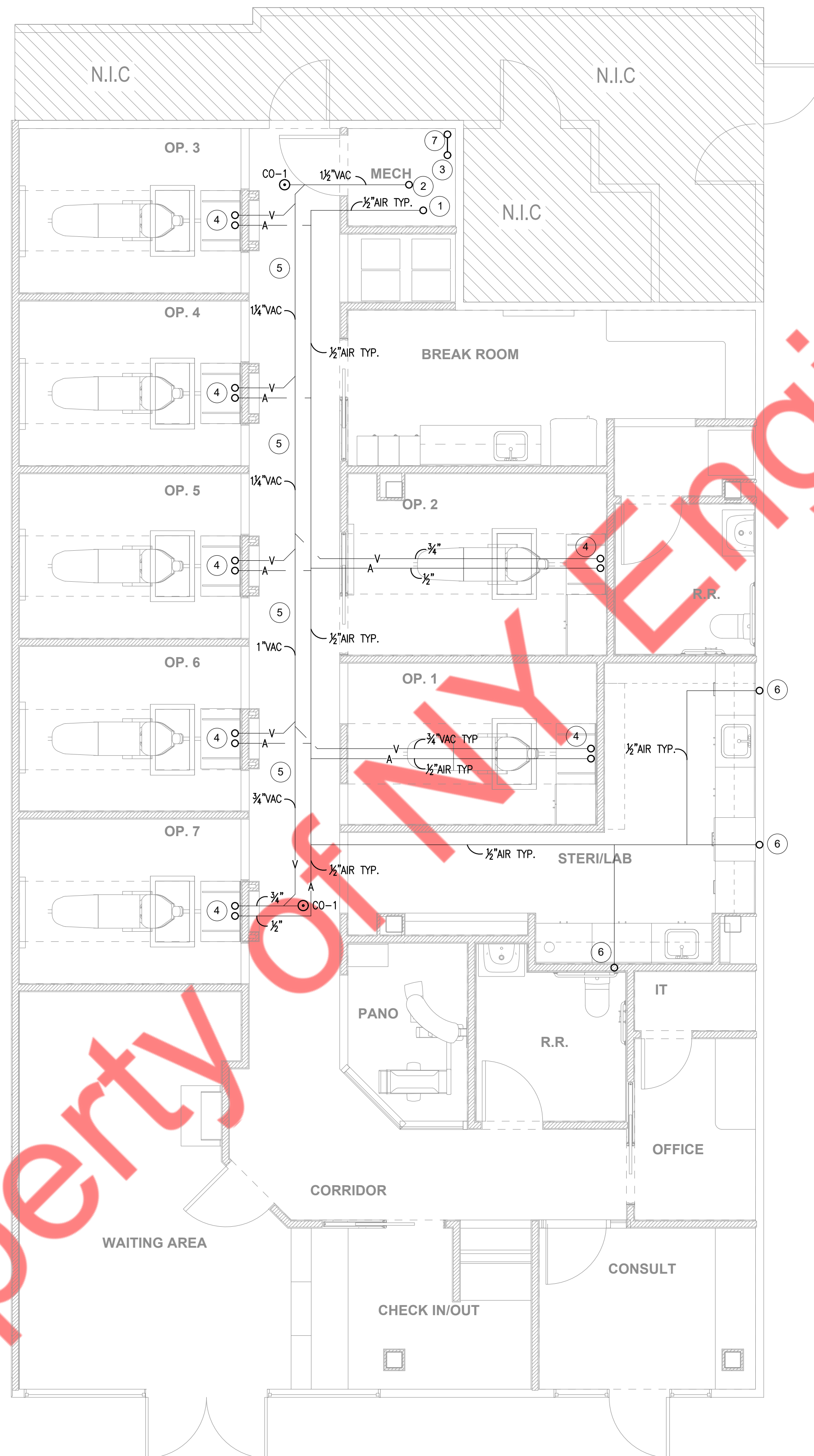
1 PLUMBING DOMESTIC WATER PIPING PLAN  
 1/4" = 1'-0"



- GAS PIPING PLAN NOTES:**
- ① ALL GAS PIPING IS RUNNING ABOVE CEILING, SHOWN ON PLAN FOR REFERENCE.
  - ② EXTEND GAS LINE TO AHU-1(N), AHU-2(N) & AHU-3(N) UNITS. PROVIDE SHUTOFF VALVE, UNION AND DIRTLEG.
  - ③ CONTRACTOR TO FIELD VERIFY EXISTING AVAILABLE GAS PRESSURE AND MAKE SURE TO PROVIDE ADEQUATE INLET PRESSURE REQUIRED FOR AHU-1(N), AHU-2(N) & AHU-3(N)
  - ④ CONTRACTOR TO FIELD VERIFY SIZE, LOCATION & ROUTING TO EXISTING GAS LINE.

① PLUMBING GAS PIPING PLAN  
1/4" = 1'-0"

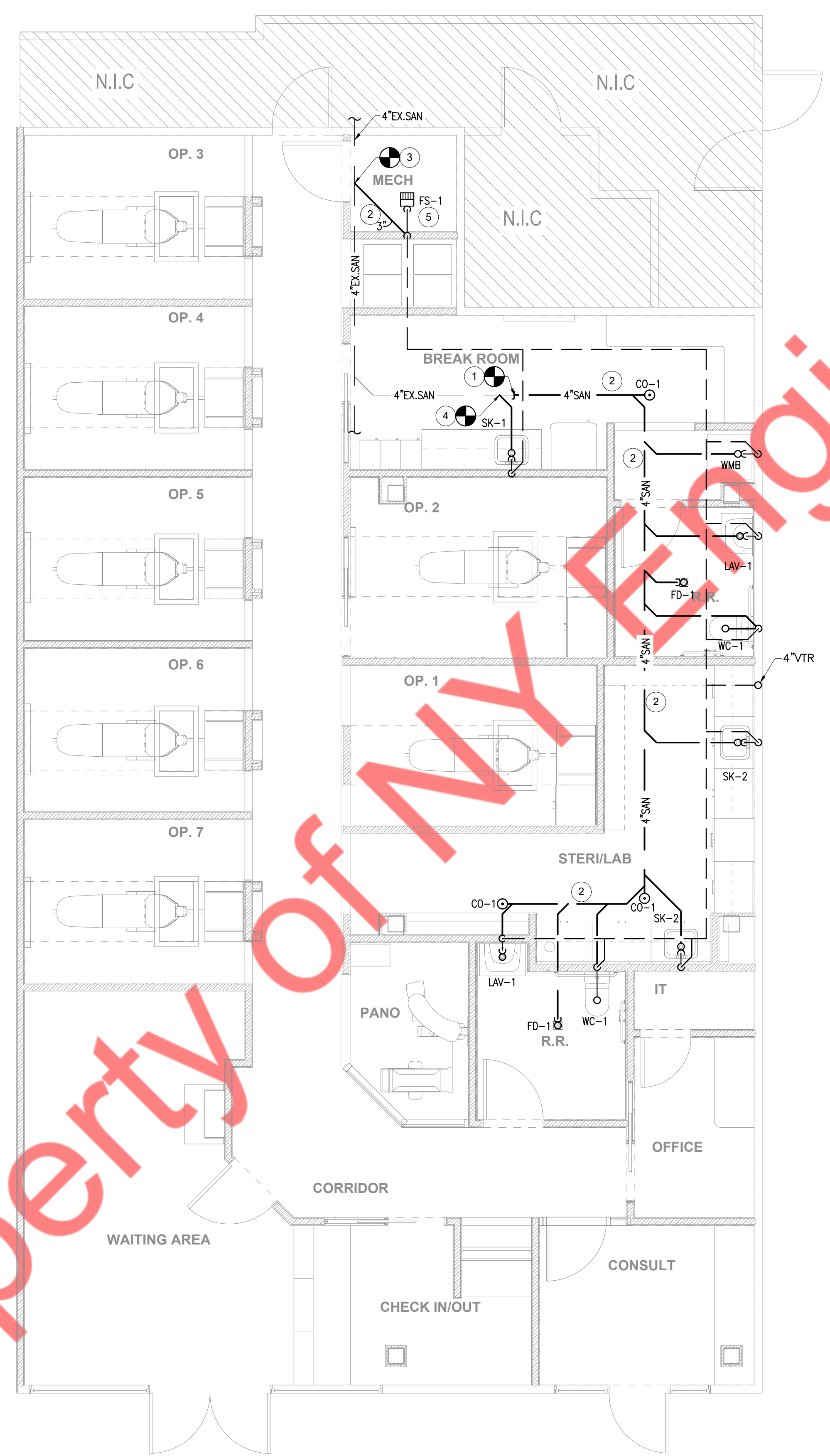
Property of MY Engineers



**VACUUM & COMPRESSED AIR PIPING PLAN NOTES:**

- 1 APPROXIMATE LOCATION FOR NEW AIR COMPRESSOR.
- 2 APPROXIMATE LOCATION FOR NEW VACUUM PUMP. ROUTE DRAIN TO FLOOR SINK.
- 3 CONTRACTOR TO FIELD VERIFY THE LOCATION OF AMALGAM SEPARATOR PRIOR TO INSTALLATION.
- 4 PROVIDE 3/4" VACUUM AND 1/2" AIR LINE TO 12-O-CLOCK CABINETS. STUB UP 4" APART AND 4" FROM FINISHED WALL. PROVIDE SHUTOFF VALVE AT TERMINATION OF AIR AND VAC LINES FOR FUTURE SYSTEM MAINTENANCE. REFER TO DETAIL SHEET FOR MORE CLARIFICATION.
- 5 REFER TO MANUFACTURER GUIDELINES PROVIDED BY DENTAL EQUIPMENT SALES SPECIALISTS FOR SPECIFIC AIR & VAC SIZING OF STUB-UP, TRUNK AND BRANCH LINES.
- 6 1/2" AIR LINE TO LAB EQUIPMENT.
- 7 CONTRACTOR TO ROUTE 2" VACUUM EXHAUST THRU ROOF AND TERMINATE WITH FLUE CAP W/BUG SCREEN. COORDINATE EXACT LOCATION WITH EQUIPMENT SUPPLIER AND ARCHITECT. REFER TO DETAIL SHEET FOR MORE CLARIFICATION.

**1 PLUMBING VACUUM & COMPRESSED AIR PIPING PLAN**  
1/4" = 1'-0"



SANITARY PIPING PLAN NOTES:

- ① CONNECT NEW 4" SANITARY WASTE PIPING TO EXISTING 4" SANITARY WASTE LINE. CONTRACTOR TO FIELD VERIFY SIZE, ROUTING AND INVERT ON SITE.
- ② SANITARY PIPING RUNNING UNDERGROUND SHOWN FOR REFERENCE. CONTRACTOR TO COORDINATE WITH EXISTING STRUCTURAL AND REROUTE AS REQUIRED TO AVOID ANY CONFLICTS AS PER FILED CONDITIONS.
- ③ CONNECT NEW 3" SANITARY WASTE PIPING TO EXISTING 4" SANITARY WASTE LINE. CONTRACTOR TO FIELD VERIFY SIZE, ROUTING AND INVERT ON SITE.
- ④ CONNECT NEW 2" SANITARY WASTE PIPING TO EXISTING 4" SANITARY WASTE LINE. CONTRACTOR TO FIELD VERIFY SIZE, ROUTING AND INVERT ON SITE.
- ⑤ A FINAL FLOOR SINK LOCATION INSIDE A MECH/STORAGE ROOM IS TO BE DETERMINED BY EQUIPMENT PROVIDER.

① PLUMBING SANITARY PIPING PLAN  
1/4" = 1'-0"