



Property of M.Y. Engineers

1 PARTIAL 3RD FLOOR PLUMBING PLAN
SCALE: 1/8" = 1'-0"

- PLUMBING NOTES:**
1. PROVIDE 3/4" CW, 3/4" HW, 2" WASTE TO PANTRY SINK & 2" VENT TO PUMP'S BASIN.
 2. PROVIDE ELECTRIC INSTANTANEOUS HOT WATER HEATER UNDERSIDE OF SINK WITH RELATED BRANCH WATER PIPING.

TIE CW, WASTE, VENT PIPE TO EXIST. RISERS (CONTRACTOR TO VERIFY EXACT LOCATION IN FIELD)

AUTOMATIC PUMP TRAY 16" X 16" C 19" HIGH, SET ON FLOOR UNDERSIDE OF SINK 1/4" TO PUMP BASIN, 2" DISCHARGE RISE UP

SE-1
1/2" V RISE
2" W UP
3/4" CW DROP TO HWH-1

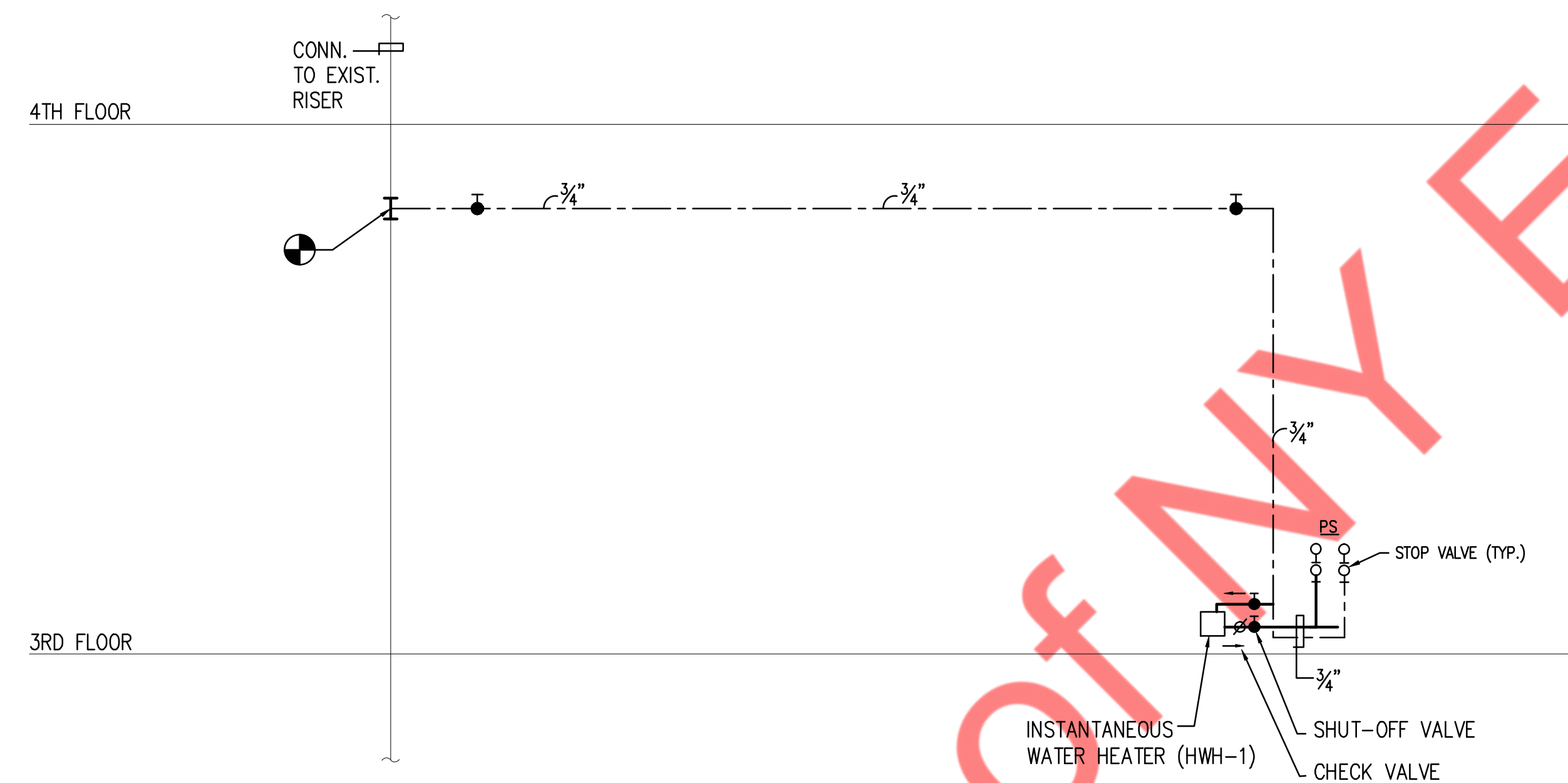
SEE PLUMBING NOTES, THIS DWG

ELECTRIC INSTANTANEOUS HOT WATER HEATER (HWH-1) UNDERSIDE OF SINK

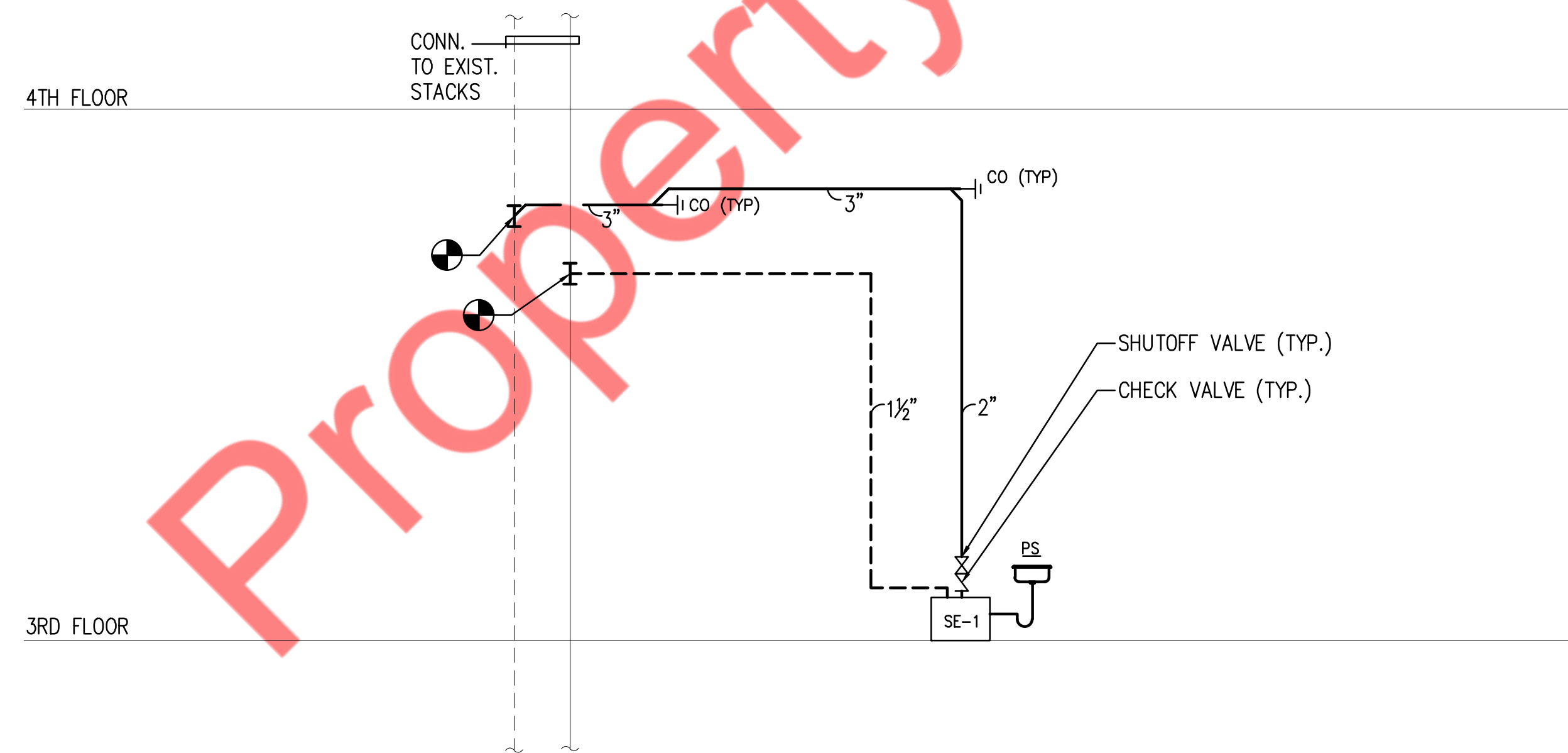
PLUMBING FIXTURE SCHEDULE								
LEGEND	PLUMBING FIXTURE	CONNECTION SIZE - INCHES						REMARKS
		TRAP	WASTE	VENT	COLD WATER	HOT WATER	THERMOSTATIC MIXING VALVE	
PS	PANTRY SINK	1½"	2"	1½"	¾"	¾"	-	P-TRAP

ELECTRIC TANKLESS WATER HEATER SCHEDULE										
MANUFACTURER & MODEL NO.	NO. REQUIRED	LOCATION	MAX. INPUT (KW)	RECOVERY CAP. (GPH) @100' RISE	GPM	AMPS	TYPE	ELECT. CHARACTERISTICS CONTROLS	REMARKS	
EEMAX SP3277	3	3RD FLOOR (PANTRY)	3	40'	0.5	10.8A	ELECT.	277V/1Ø/60Hz	-	

PUMP SCHEDULE																	
TAG	SERVICE	LOCATION	PERFORMANCE DATA			PUMP CONSTRUCTION DATA		MOTOR DATA							MFR MODEL	REMARKS	
			GPM	TDH (FT)	WATER TEMP. (°F)	PUMP TYPE	IMPELLER MATERIAL	MHP	STARTER TYPE	V/PH/Hz	RPM	RUNNING AMPS	ROTATION	SERVICE FACTOR			WEIGHT (LBS)
SE-1	SAN	2ND FL	10	20	-	TRAY PUMP	-	1/3	FLOAT SWITCH	115/1/60	1750	-	PER MFG	1.0	-	FEDERAL PUMP CORP TYPE ALTV	SIMPLEX TRAY PUMP WITH BASIN, SET ON FLOOR, UNDERSIDE OF SINK'S COUNTER (16"X16"X19" HIGH)



WATER RISER DIAGRAM
N.T.S.



SANITARY RISER DIAGRAM
N.T.S.