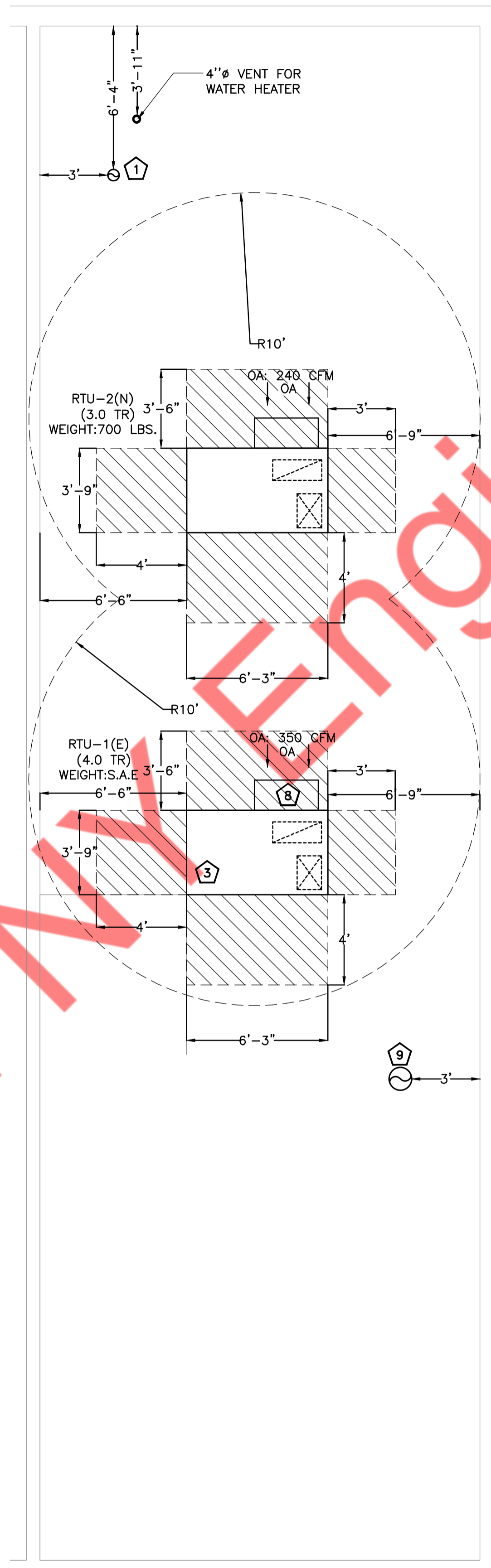


1
M1.1
MAIN MECHANICAL FLOOR PLAN
1/4" = 1'-0"



2
M1.1
MECHANICAL ROOF PLAN
1/4" = 1'-0"

- GENERAL NOTES
- A. CONTRACTOR SHALL BALANCE EACH DEVICE WITH THE CFM SHOWN PLAN.
 - B. DUCTWORK SHOWN ON PLAN ARE SCHEMATIC ONLY. CONTRACTOR SHALL COORDINATE WITH OTHER TRADES FOR DUCTWORK ROUTING, OFFSET AND RUN PIPING, DUCTWORK INSIDE THE STRUCTURE IF REQUIRED. PROVIDE ANY EXTRA DUCTWORK, FITTINGS, INSULATIONS AND OTHER ACCESSORIES IN ORDER TO COMPLETE THE INSTALLATION.
 - C. COORDINATE LOCATIONS AND SIZES OF ROOF OPENINGS WITH OWNER AND STRUCTURE ENGINEERS.
 - D. EQUIPMENT SIZES, DIMENSIONS AND REQUIRED CONNECTIONS SHALL BE VERIFIED WITH THE ACTUAL EQUIPMENT SELECTED VENDOR DRAWINGS BEFORE FABRICATION OF DUCTWORK, PIPING ETC.
 - E. DUCT SIZES SHOWN ON PLANS ARE CLEAR INSIDE AIR STREAM DIMENSIONS.
 - F. CONTRACTOR SHALL COORDINATE ALL ELECTRICAL REQUIREMENTS FOR ALL HVAC BASED ON ACTUAL EQUIPMENT SELECTED PRIOR TO INSTALLATION.
 - G. CONTRACTOR SHALL COORDINATE EQUIPMENT WEIGHTS AND SUPPORTS BASED ON ACTUAL EQUIPMENT SELECTED.
 - H. COORDINATE WITH ALL TRADES FOR MATERIALS IN RATED AND PLENUM SPACES.
 - I. ALL SOURCE OF MECHANICAL INTAKE SHALL MAINTAIN 10 LINEAR FEET SEPARATION BETWEEN ANY SOURCE OF EXHAUST. CONTRACTOR IS RESPONSIBLE TO ADJUST DUCT LENGTH AS NEEDED.
 - J. PROVIDE R-12 INSULATION WITH 2" THICKNESS FOR ALL OUTDOOR AIR INTAKE DUCTS.
 - K. PROVIDE R-6 INSULATION WITH 1.5" THICKNESS FOR SUPPLY AND RETURN DUCTWORK.
 - L. PROVIDE 1" INSULATION TO CONDENSATE DRAIN AND 1.5" INSULATION TO REFRIGERANT PIPING.
 - M. PROVIDE WEATHER PROOF COATING FOR ALL EXTERIOR PIPING INSULATION.

- KEY NOTES:
- 1 6" EXHAUST DUCT UP THROUGH ROOF WITH GOOSENECK, WEATHER SKIRT, AND BIRD SCREEN. MAINTAIN A MINIMUM OF 10'-0" FROM ALL OUTSIDE AIR INTAKES AND TERMINATE 36" ABOVE ROOF.
 - 2 LOCATION OF DIGITAL THERMOSTAT CONTROL FOR RTU-1(E) & RTU-2(N). INSTALL AND WIRE NEW 7-DAY PROGRAMMABLE THERMOSTAT. COORDINATE EXACT LOCATION WITH ARCHITECT AND OWNER PRIOR TO ROUGH-IN. PROVIDE LOCKABLE COVER.
 - 3 EXISTING RTU TO REMAIN WITH ALL ASSOCIATED ACCESSORIES. CONTRACTOR TO FIELD VERIFY EXACT LOCATION OF EXISTING RTU.
 - 4 EXISTING PENETRATION FROM RTU TO BE REMAIN. CONTRACTOR TO FILED VERIFY EXITING PENETRATIONS.
 - 5 EXTEND FULL SIZE SUPPLY & RETURN DUCTWORK FROM ROOFTOP UNITS TO SPACE. EXTEND AS SHOWN. ACOUSTICALLY LINE THE FIRST 10'-0" OF BOTH SUPPLY AND RETURN MAIN DUCTS.
 - 6 SMOKE DETECTOR SHALL BE FURNISHED/INSTALLED BY MECHANICAL CONTRACTOR AND WIRED BY ELECTRICAL CONTRACTOR TO SHUT DOWN CORRESPONDING RTU UNDER ALARM CONDITIONS. ALL WIRING SHALL BE IN CONDUIT PER N E C SMOKE DETECTOR SHALL BE SYSTEM SENSOR MODEL DH100ACDCLP OR EQUAL.
 - 7 PROVIDE REMOTE TEMP SENSOR MOUNTED IN RETURN DUCT AND WIRE BACK TO T-STAT IN CHECK-IN ROOM.
 - 8 CONTRACTOR TO RE-BALANCE OUTSIDE AIR DAMPER ON RTU-1 (E) TO 350 CFM.
 - 9 12" EXHAUST DUCT UP THROUGH ROOF WITH GOOSENECK, WEATHER SKIRT, AND BIRD SCREEN. MAINTAIN A MINIMUM OF 10'-0" FROM ALL OUTSIDE AR INTAKES AND TERMINATE 36" ABOVE ROOF.