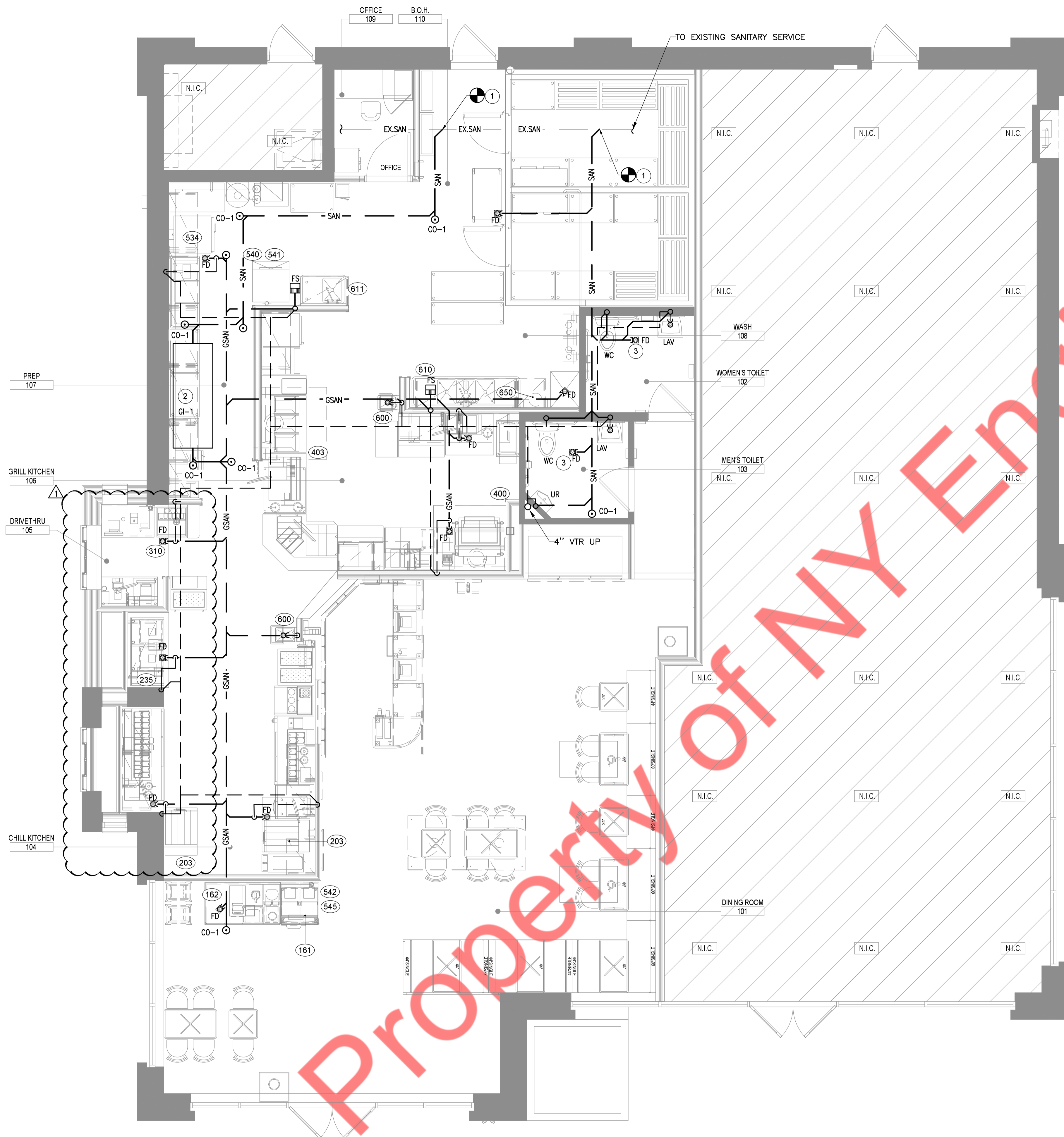


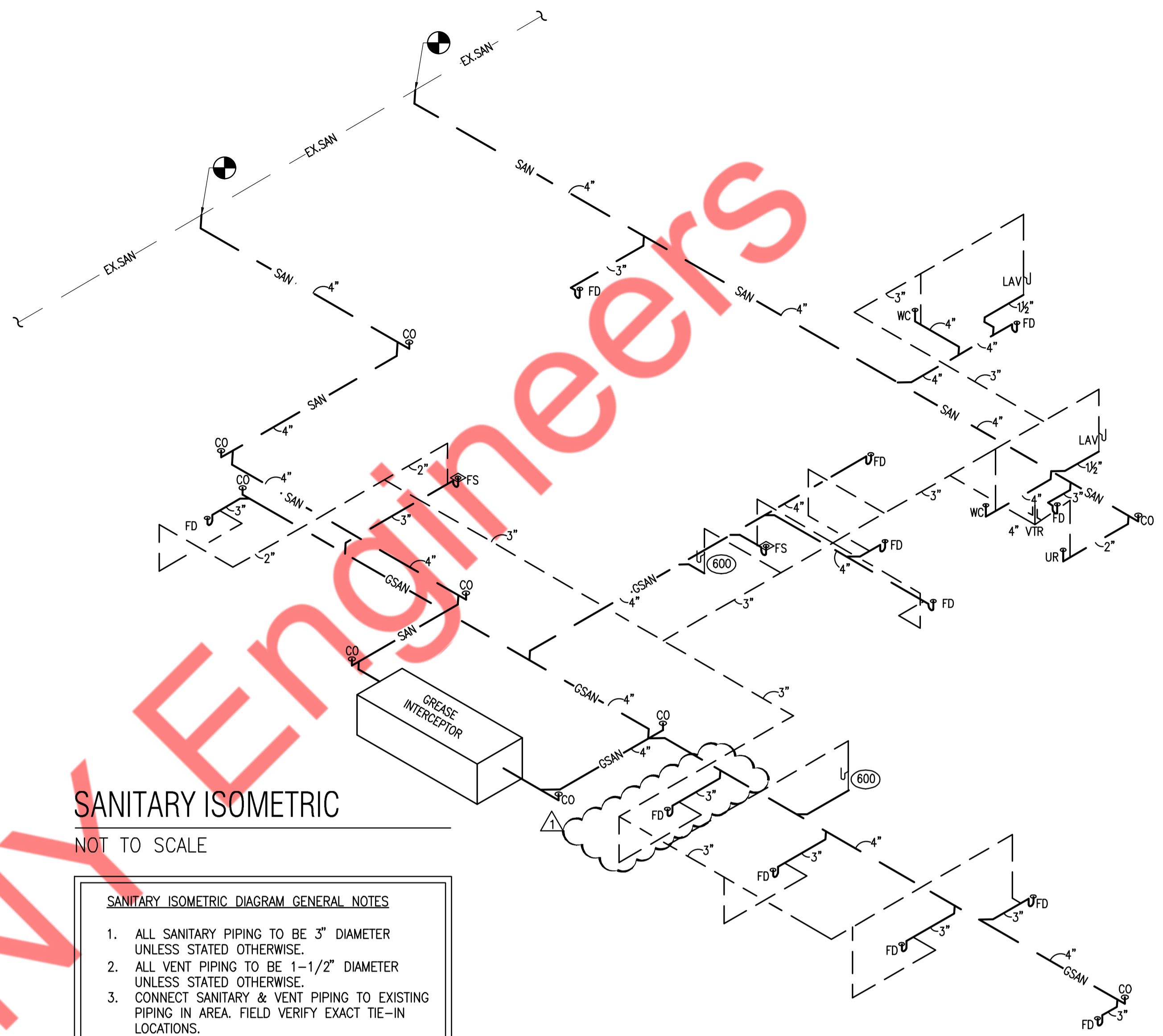
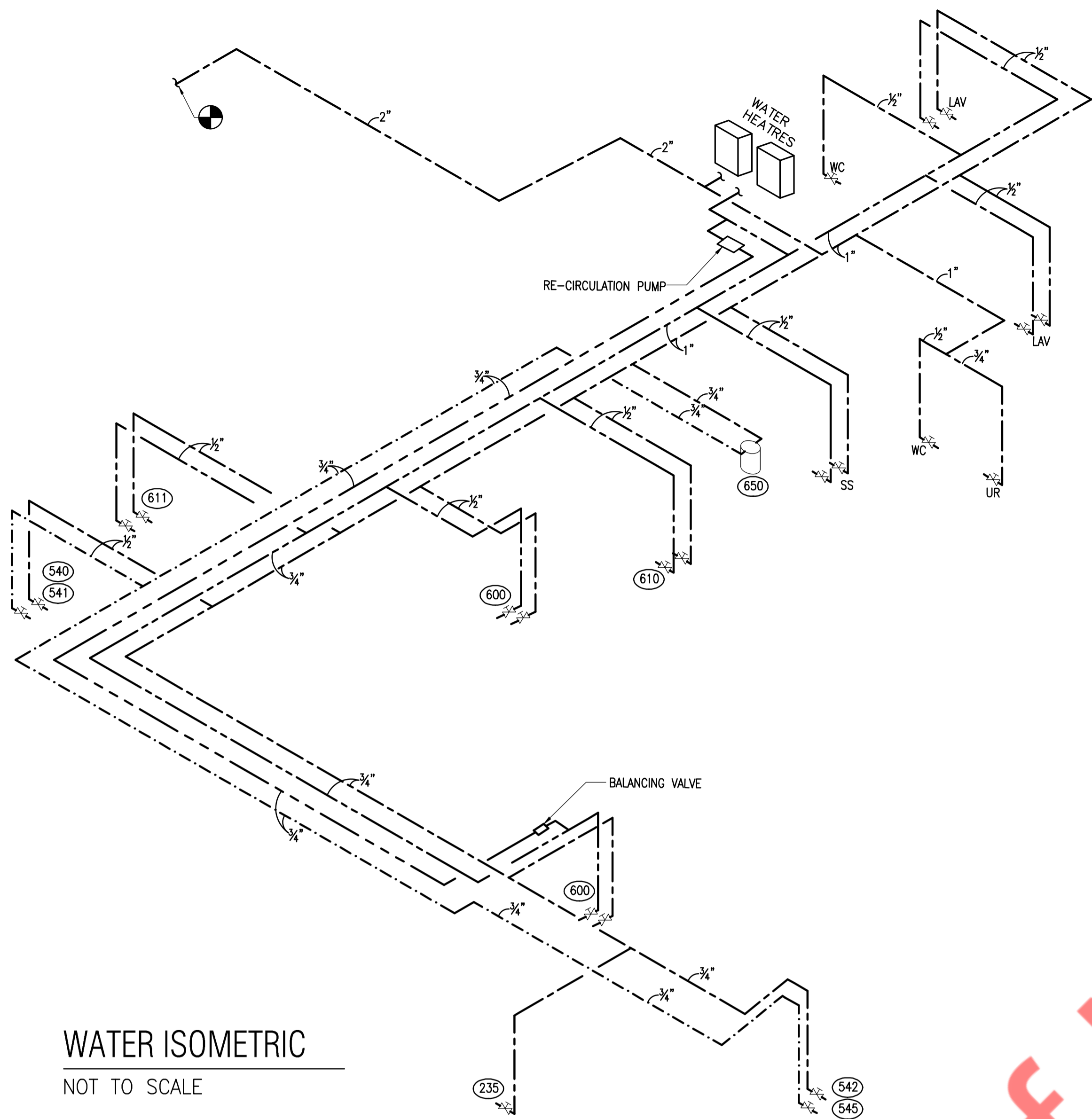
DOMESTIC WATER & GAS PIPING PLAN NOTES:

- ① CONNECT NEW 2" CW TO EXISTING 2" CW PIPING IN THIS AREA FOR TENANT. EXTEND NEW PIPING AS INDICATED. FIELD VERIFY EXACT SIZE AND LOCATION OF EXISTING CW PIPING. CONTRACTOR TO PROVIDE SEPARATE RPZ BACKFLOW PREVENTER AT AN APPROPRIATE AND ACCESSIBLE LOCATION AS PER LOCAL CODES.
- ② PROVIDE A TEMPERING VALVE FOR LAVATORIES. POWER HYDROGUARD SERIES LM495, ASSE 1070 OR EQUAL. SET TEMPERATURE TO A MAXIMUM OF 110°F.
- ③ 1" CW/HW PIPING TO TANKLESS WATER HEATER. PLUMBING CONTRACTOR SHALL EXTEND WATER HEATER FLUE TO EXTERIOR PER MANUFACTURER'S INSTRUCTIONS.
- ④ PROVIDE HOT WATER RECIRCULATION PUMP & STRAP ON AQUASTAT. INSTALL AQUASTAT ON FIXTURE FURTHEST AWAY FROM HOT WATER HEATER. EXTEND RECIRCULATION PIPING TO TANKLESS WATER HEATERS PER MANUFACTURER'S INSTRUCTIONS.
- ⑤ CONNECT NEW 2" GAS PIPE TO EXISTING 2" GAS STUB OUT. CONTRACTOR TO VERIFY EXISTING GAS PIPING. VERIFY EXACT LOCATION IN FIELD. COORDINATE ALL WORK WITH UTILITY COMPANY AND LANDLORD. EXTEND NEW GAS PIPING UP TO ROOFTOP AND TO EQUIPMENT AS SHOWN.
- ⑥ EXTEND GAS LINE TO ROOFTOP UNITS. PROVIDE SHUTOFF VALVE, UNION AND DIRTLEG.
- ⑦ CONTRACTOR TO FIELD VERIFY EXISTING AVAILABLE GAS PRESSURE AND MAKE SURE TO PROVIDE ADEQUATE INLET PRESSURE REQUIRED FOR GAS FIRED WATER HEATER, KITCHEN EQUIPMENTS, RTU-1, 2 & 3.



SANITARY PIPING PLAN NOTES:

- 1 CONNECT NEW 4" SANITARY TO EXISTING MAIN IN THIS AREA. PLUMBING CONTRACTOR SHALL VERIFY EXACT LOCATION, SIZE, AND INVERT OF EXISTING SANITARY MAIN. SAWCUT AND TRENCH FLOOR AS REQUIRED AND PATCH FLOOR TO MATCH EXISTING.
- 2 GREASE INTERCEPTOR, SCHIER GB-250, 100 GPM, 1895 LBS CAPACITY 4" INLET W/ FLOW CONTROL 1-1/2" VENT UP. FIELD VERIFY EXACT PLACEMENT OF GREASE TRAP AND COORDINATE WITH FOOD SERVICE EQUIPMENT PLANS TO AVOID LEG CONFLICTS. PROVIDE ALL APPURTENANCES FOR A COMPLETE INSTALLATION INCLUDING FLOW CONTROL AND AIR VENT. INSTALLATION SHALL BE IN STRICT ACCORDANCE WITH CITY REGULATIONS AND MANUFACTURER'S INSTRUCTIONS. PROVIDE PEDESTRIAN RATED POLYPROPYLENE COVER OVER-LAYS WHEN INSTALLED IN PEDESTRIAN TRAFFIC AREAS. P.C. TO ENSURE A MINIMUM OF 2% SLOPE FOR SANITARY FROM FLOOR SINK TO GREASE TRAP SUCH THAT GREASE TRAP INLET IS LOWER THAN THE FLOOR SINK OUTLET. INSTALL GREASE TRAP EXTENSION IF NECESSARY TO ALLOW FOR SLOPE FROM FLOOR SINK. P.C. TO ENSURE A MAXIMUM OF 100 GPM FLOW RATE FROM 3-COMPARTMENT SINK INTO FLOOR SINK AND INSTALL A SECONDARY FLOW CONTROL DEVICE PRIOR TO FLOOR SINK IF NECESSARY.
- 3 3" FLOOR DRAIN. PROVIDE WATERLESS SURESEAL TRAP SEALER FOR FLOOR DRAIN. COORDINATE EXACT LOCATION WITH ARCHITECT/OWNER.



GAS LOAD SUMMARY		
SR.NO	EQUIPMENT	GAS LOAD (CFH)
1.	CHAIN BROILER	97
2.	THREE VAT FRYER	225
3.	WATER HEATER(X2)	398
4.	RTU-1	130
5.	RTU-2	130
6.	RTU-3	150
	TOTAL	1130

