

- NOTES**
- 5mA GFCI BREAKERS MUST BE USED WHERE OUTLETS REQUIRING GFCI PROTECTION ARE NOT ACCESSIBLE FOR COMPLIANCE WITH NEC 210.8. WHERE GFCI PROTECTION SHUNT TRIP IS REQUIRED, THE CIRCUIT SHALL HAVE A GFCI BREAKER AND PASS THROUGH THE TBANS PANEL REFER TO DETAILS IN E7.0 AND E7.1.
 - E.C. SHALL COORDINATE WITH EQUIPMENT SUPPLIER FOR EXACT LOCATION, MOUNTING DETAILS AND POWER REQUIREMENT AND ACCORDINGLY PROVIDE THE ELECTRICAL POWER CONNECTION TO EQUIPMENTS.

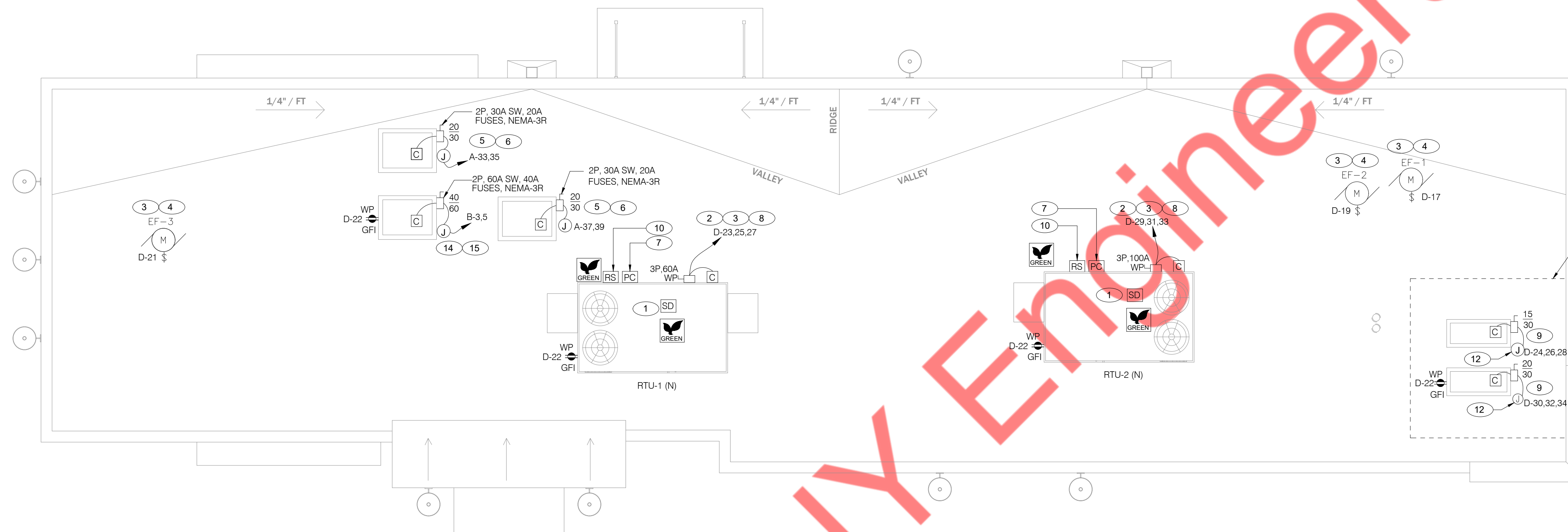
POWER PLAN 1/4" = 1'-0" **A**

A.	ALL DIMENSIONS TO J-BOXES ARE FROM FACE OF STUD TO CENTER OF BOX, U.O.N.	J.	ELECTRICAL EQUIPMENT ENCLOSURES SHALL BE NEMA-1 FOR INTERIOR AND NEMA 3R FOR EXTERIOR. IN COASTAL REGIONS THE STANDARD FOR OUTSIDE SHALL BE NEMA-4X.
B.	ALL CONDUIT DROPS ARE INSIDE WALLS U.O.N. SEE ARCH. DWGS FOR WALL DIMS.	K.	PER SECTION 210.8(B)(3) NEC 2011, ALL 15 AND 20A, 120V RECEPTACLES IN COMMERCIAL KITCHENS ARE REQUIRED TO BE GFCI PROTECTED. THIS INCLUDES ISOLATED GROUND RECEPTACLES.
C.	ALL J-BOX CIRCUITS, CONDUITS, FIXTURES, ETC. SHALL BE AS INDICATED ON THE ELECT. DWGS AND SPECS.	L.	DO NOT MEASURE/LOCATE OUTLETS ON DRAWINGS. USE DIMENSIONS PROVIDED.
D.	CONTRACTOR SHALL VERIFY UNDERGROUND CONDUIT LOCATIONS PRIOR TO POURING SLAB.	M.	CONDUIT MAY RUN UNDER SLAB AT G.C.'S DISCRETION.
E.	IT IS THE RESPONSIBILITY OF THE CONTRACTOR TO COORDINATE THIS DATA ON THE LOCATION OF ELECT. ROUGH-INS WITH INFO PROVIDED ON THE ARCH. AND STRUCT. DWGS AND THE EQUIPMENT ACTUALLY SUPPLIED, AND TO CONFIRM THE CORRECTNESS OF ANY DIMENSIONS HEREIN.	N.	E.C. SHALL PROVIDE A PREPRINTED SELF-ADHESIVE LABEL ON ALL POS RECEPTACLES STATING "POS USE ONLY".
F.	LOCATIONS OF ALL OUTLETS MAY BE RELOCATED TO NEAREST STUD. DO NOT CUT INTO STUDS.	O.	PROVIDE ESCUTCHEON PLATES AND SEALANT AT ALL UTILITY PENETRATIONS INTO WALLS, CEILING, AND FLOORS. DO NOT USE CAULKS OR EXPANSION FOAM FOR SEALANT.
G.	FOR EXACT LOCATIONS OF KITCHEN & MECHANICAL EQUIPMENT AND POINTS OF CONNECTION, REFER TO KITCHEN & MECHANICAL EQUIPMENT DRAWINGS AND MANUFACTURER'S SHOP DRAWINGS.	P.	ARMOR CABLE (BX) ALLOWED WHERE ACCEPTABLE BY CODE. ALL WIRE SHALL BE CONCEALED O.N.U.
H.	ALL CIRCUIT FEEDERS AND DISCONNECTS SHALL BE SIZED BY NEC.	Q.	FOR ALL CIRCUITS NOT SHOWN ON EQUIPMENT SCHEDULE, CONTRACTOR SHALL PROVIDE CONDUCTOR AND CONDUIT SIZES AS SHOWN ON BRANCH CIRCUIT WIRING SCHEDULE SHOWN ON E2.2. IF SIZES DIFFER FROM N.E.C., THE MORE STRINGENT (LARGER) SIZE SHALL BE PROVIDED.
I.	CONTRACTOR SHALL VERIFY CIRCUIT BREAKER, DISCONNECT SWITCH, STARTER AND FUSE SIZES WITH SELECTED EQUIPMENT MANUFACTURER'S SHOP DRAWINGS PRIOR TO PLACING ORDER AND PROVIDE EVERYTHING AS REQUIRED.	R.	OUTLETS WITHIN FOH TO BE AT 18" AFF FOR ADA ACCESS.
		S.	CONDUITS NEAR DRIVE THRU WINDOW AREA TO BE ROUTED FROM ABOVE CEILING OR STUBBED UP FROM UNDER SLAB SO AS TO NOT INTERFERE WITH WINDOW FRAMING.

GENERAL NOTES - ELECTRICAL POWER PLAN NTS **C**

1	REFER TO ROOF PLAN.	9	CEILING MOUNTED FOR WALL MOUNTED HME. SEE 6/E3.1.	20	EC / GC TO RUN (3) ORANGE CAT 6 LINES FROM NETWORK SWITCH TO DATA JUNCTION BOX. CAT6 LINES SHOULD HAVE BOTH ENDS PROPERLY TERMINATED WITH RJ-45 CONNECTORS. EXCESS CAT6 CABLE TO BE COILED INTO SERVICE LOOPS AT EACH END AND LEFT ACCESSIBLE FOR DMB INSTALL TEAM. CAT6 TO BE RUN IN ACCORDANCE WITH ALL LOCAL MUNICIPALITY CODE REQUIREMENTS.
2	INSTALL IN CONDUIT RUNNING ON SURFACE OF KITCHEN SIDE OF CABINERY REAR WALL.	10	POWERED BY PRODUCTION LINE.	21	CONNECT PRODUCTION LINE CIRCUIT BREAKER PANEL VIA UTILITY CHASE IN CEILING TO A 3 POLE, 125 AMP CIRCUIT BREAKER IN MAIN SWITCHBOARD. SEE SHEET E2.0. VERIFY ALL REQUIREMENTS WITH ACTUAL EQUIPMENT SPECIFIED. THE MANUFACTURER WILL FULLY PRE-WIRE THE COMPLETE MAPS LINE AT THE FACTORY. THE UNITS WILL THEN BE PULLED APART FOR SHIPPING PURPOSES. ALL CONNECTION POINTS WILL BE MARKED. THE CONDUIT RUNS WILL BE COILED UP FOR FIELD INSTALLATION. SOME ELECTRICAL COMPONENTS MAY BE REMOVED FOR EASE OF DISASSEMBLING THE LINE-UP. THE ELECTRICAL CONTRACTOR WILL BE FULLY RESPONSIBLE FOR MAKING THE PROPER FIELD CONNECTIONS FROM THE ROUGH-IN LOCATION TO THE MANUFACTURER PROVIDED BREAKER PANEL BOX. IN ADDITION, THE ELECTRICAL CONTRACTOR WILL BE RESPONSIBLE FOR ANY SPLICE POINTS AND/OR JUNCTION BOXES THAT NEED TO BE RECONNECTED. SOME ELECTRICAL COMPONENT ASSEMBLY MAY ALSO BE REQUIRED.
3	CONNECT PRODUCTION LINE CIRCUIT BREAKER PANEL VIA UTILITY CHASE IN CEILING TO A 3 POLE, 200 AMP CIRCUIT BREAKER IN MAIN SWITCHBOARD. SEE SHEET E2.0. VERIFY ALL REQUIREMENTS WITH ACTUAL EQUIPMENT SPECIFIED. THE MANUFACTURER WILL FULLY PRE-WIRE THE COMPLETE MAPS LINE AT THE FACTORY. THE UNITS WILL THEN BE PULLED APART FOR SHIPPING PURPOSES. ALL CONNECTION POINTS WILL BE MARKED. THE CONDUIT RUNS WILL BE COILED UP FOR FIELD INSTALLATION. SOME ELECTRICAL COMPONENTS MAY BE REMOVED FOR EASE OF DISASSEMBLING THE LINE-UP. THE ELECTRICAL CONTRACTOR WILL BE FULLY RESPONSIBLE FOR MAKING THE PROPER FIELD CONNECTIONS FROM THE ROUGH-IN LOCATION TO THE MANUFACTURER PROVIDED BREAKER PANEL BOX. IN ADDITION, THE ELECTRICAL CONTRACTOR WILL BE RESPONSIBLE FOR ANY SPLICE POINTS AND/OR JUNCTION BOXES THAT NEED TO BE RECONNECTED. SOME ELECTRICAL COMPONENT ASSEMBLY MAY ALSO BE REQUIRED.	11	VERIFY PANEL LOCATION OF COOK LINE WITH TACO BELL CONSTRUCTION MANAGER PRIOR TO INSTALLATION.	22	NEW ELECTRICAL PANELS "A", "B" AND "D". E.C. TO COORDINATE WITH ARCHITECT/OOWNER FOR EXACT LOCATION OF THE NEW ELECTRICAL PANEL IN FIELD.
4	EQUIPMENT CABINET.	12	PROVIDE J-BOX FOR POWER SOAK INDICATOR LIGHT. (OPTIONAL)		
5	NOT USED.	13	VERIFY LOCATION OF JUNCTION BOX WITH CONSTRUCTION MANAGER.		
6	INSTALL CONTROL CABLE FROM FREEZER/COOLER FAN COIL TO ROOF MOUNTED CONDENSER.	14	PROVIDE DUPLEX RECEPTACLES WITH TWO USB CHARGING PORTS.		
7	LOCATE SWITCHGEAR PER GUIDELINES ON SHEET A4.1.	15	E.C. SHALL CO-ORDINATE WITH ARCHITECTURE /OWNER FOR THE EXACT LOCATION OF THE MAIN ELECTRICAL PANEL "MSB" IN FIELD. ACCORDINGLY UPDATE THE ELECTRICAL REQUIREMENT IF ANY.		
8	PROVIDE BOOST TRANSFORMER (208V, 1-PHASE IN, 240V, 1-PHASE OUT) FOR FROZEN BEVERAGE DISPENSER.	16	QUAD RECEPTACLE FOR FUTURE DIGITAL MENU BOARD. TYPICAL OF 2.		
		17	2-GANG FLUSH BOX WITH DEAD-FRONT GFCI DEVICES. MOUNT CENTER OF BOX AT 48" A.F.F.. REFER TO E7.0.		
		18	EC / GC TO INSTALL A TOTAL OF (2) QUAD OUTLETS IN (2) QUAD BOXES ON FRONT OF VALANCE WALL AS SHOWN. OUTLETS TO BE STRAIGHT BLADE. OUTLETS TO BE ON AN ISOLATED/DEDICATED GROUNDED CIRCUIT THAT IS NOT CONNECTED TO ANY RESTAURANT POWER MANAGEMENT SYSTEM.		
		19	EC / GC TO INSTALL (1) OPEN DATA JUNCTION BOX (JB) IN VALANCE WALL. CONDUIT TERMINATED ABOVE CEILING TO HAVE BUSHING.		


KEY NOTES - ELECTRICAL POWER PLAN NTS **B**



DESIGNER NOTE:
SITE ADAPT ENGINEER TO VERIFY
ALL WALK-IN COOLER POWER
REQUIREMENTS WITH TACO BELL
WALK IN COOLER/FREEZER
VENDOR.

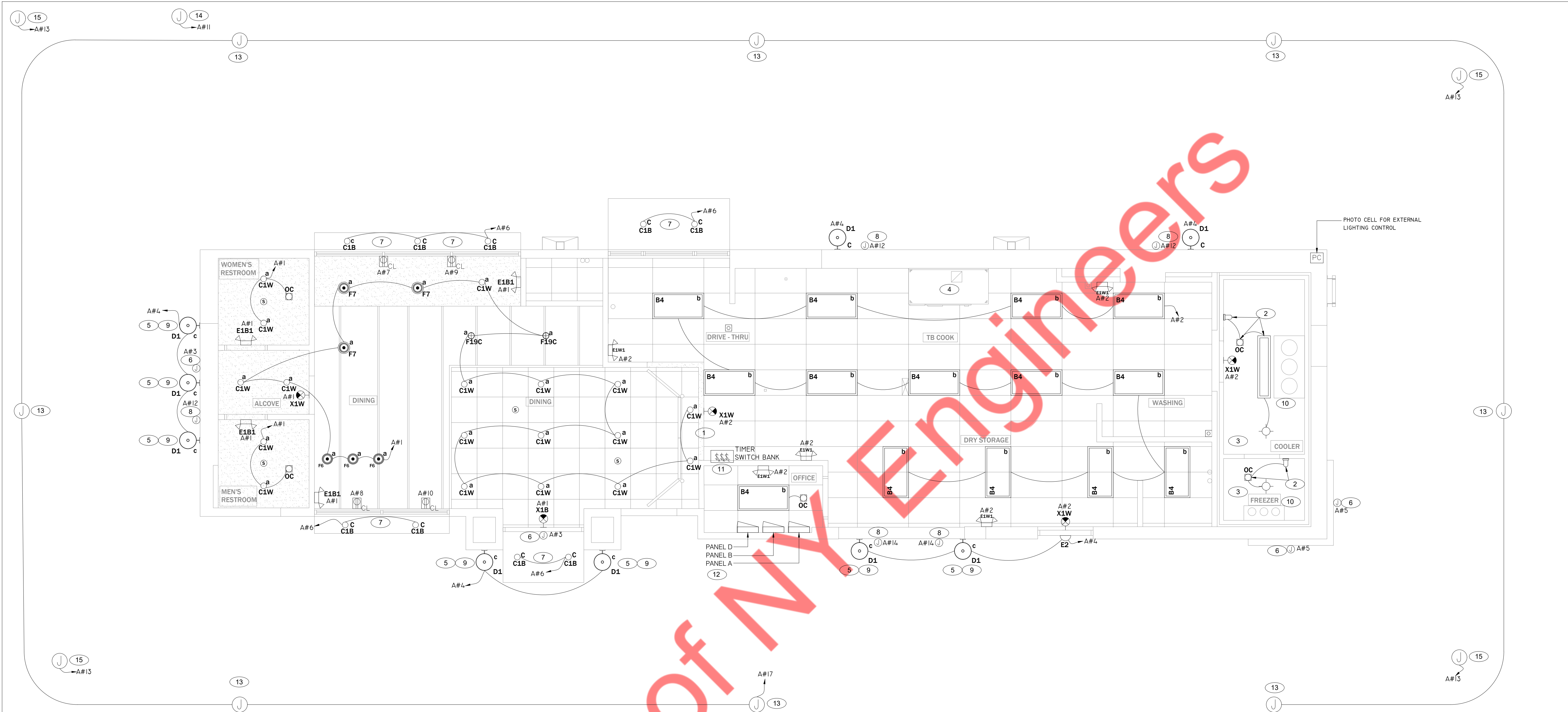
POWER ROOF PLAN 1/4" = 1'-0" **A**

- A. NO CONDUIT SHALL BE FASTENED DIRECTLY TO OR THROUGH ROOFING MEMBRANE.
- B. ALL CUTS IN ROOFING MEMBRANE SHALL BE MINIMAL AND IN ACCORDANCE WITH ROOFING MFR'S AND INSTALLERS REQ'S.
- C. REFER TO MECH. DWGS FOR MECHANICAL EQUIPMENT ELECTRICAL REQ'S.
- D. ALL EXPOSED ELECTRICAL CONDUITS SHALL PENETRATE ROOF MEMBRANE AT PIPE HOODS U.O.N.
- E. REFER TO ELECT. EQUIP. SCHEDULE AND ELECT. ROUGH-IN PLAN.
- F. ALL CONDUITS FROM EXHAUST FANS SHALL BE ROUTED INSIDE OF CURB.
- G. ALL CONDUITS TO AND FROM RTU SHALL BE ROUTED INSIDE OF RTU CURB, COORDINATE WITH RTU MFR RECOMMENDATIONS.
- H. REFER TO GENERAL NOTES SHEET E2.0 FOR IMPORTANT INFORMATION.
- I. ALL WIRING AND CONDUITS SHALL BE CONCEALED. NO CONDUITS PERMITTED TO RUN EXPOSED ACROSS ROOF DECK. ROUTE ALL CONDUITS THROUGH EQUIPMENT ROOF CURBS OR ARCHITECT SPECIFIED ROOF PENETRATIONS.
- J. ARMOR CABLE (BX) IS ONLY TO BE ALLOWED WHERE ACCEPTABLE BY AUTHORITY HAVING JURISDICTION.

- 1 MECHANICAL CONTRACTOR SHALL PROVIDE CONNECTIONS BETWEEN RTU FACTORY SMOKE DETECTORS AND REMOTE ENUNCIATOR, TEST AND RESET DEVICE IN MANAGER OFFICE. ELECTRICAL CONTRACTOR SHALL PROVIDE ANY NECESSARY CONDUITS FOR LOW VOLTAGE WIRING.
- 2 SPECIFIED RTU IS SUPPLIED WITH UNPOWERED, WEATHERPROOF GFCI CONVENIENCE OUTLET AND FACTORY INSTALLED HACR CIRCUIT BREAKER WITH WEATHER TIGHT ENCLOSURES AND ACCESS THRU SWINGING DOOR.
- 3 POWER AND CONTROL IN FLEXIBLE WATERPROOF CONDUIT (LFMC CONDUIT) TO ENTER FROM SIDE OF THE CURB AND UP TO FACTORY PROVIDED DISCONNECT SWITCH. COORDINATE WITH MECHANICAL CONTRACTOR.
- 4 CONNECT TO APPROPRIATE TERMINALS OF TBCCB CONTROL BOX. SEE E6.1 FOR DETAILS.
- 5 1/2" C, WITH REQ'D CONDUCTORS TO J-BOX IN CEILING ABOVE ICE MACHINE. MAKE CONNECTION TO ICE MACHINE AND CONDENSING UNIT.
- 6 ELECTRICAL CONTRACTOR SHALL MAKE ALL ELEC. CONNECTIONS INCLUDING ALL NECESSARY INTERCONNECTIONS BETWEEN THE COMPRESSOR ON THE ROOF & THE EVAPORATOR IN THE ICE MACHINE AS REQ'D. REFER TO THE MFR'S SHOP DWGS FOR EXACT INSTALL. & INTERCONNECTION REQMTS, PRIOR TO ROUGH-IN INSTALL.
- 7 CONNECT TO APPROPRIATE PHOTOCELL TERMINALS OF TBCCB CONTROL BOX. SEE E6.1 FOR DETAILS.
- 8 RTU'S SHALL BE PROVIDED WITH BUILT-IN DISCONNECT AND SINGLE POINT WIRING. E.C. TO VERIFY THE CONNECTION IN FIELD.
- 9 CONTRACTOR SHALL VERIFY CIRCUIT BREAKER TYPE, STARTER, DISCONNECT SWITCH, AND FUSE SIZE (IF REQUIRED) WITH SELECTED EQUIPMENT MANUFACTURER'S SHOP DRAWINGS PRIOR TO PLACING ORDER AND FURNISH AND INSTALL EVERYTHING AS REQUIRED.
- 10 RAIN SENSOR. 
- 11 NOT USED.
- 12 REFER TO POWER PLAN FOR CONTINUATION TO COOLER / FREEZER.
- 13 NOT USED.
- 14 1/2" C, WITH REQ'D CONDUCTORS TO J-BOX IN CEILING ABOVE FROZEN BEVERAGE MACHINE. MAKE CONNECTION TO BEVERAGE MACHINE AND ASSOCIATED CONDENSING UNIT.
- 15 ELECTRICAL CONTRACTOR SHALL MAKE ALL ELECTRICAL CONNECTIONS INCLUDING ALL NECESSARY INTERCONNECTIONS BETWEEN THE CONDENSER ON THE ROOF & THE EVAPORATOR IN THE FROZEN BEVERAGE MACHINE AS REQUIRED. REFER TO THE MFR'S SHOP DWGS FOR EXACT INSTALL. & INTERCONNECTION REQUIREMENTS, PRIOR TO ROUGH-IN INSTALL.

GENERAL NOTES - ELECTRICAL POWER ROOF PLAN NTS **C**

KEY NOTES - ELECTRICAL POWER ROOF PLAN NTS **B**



ELECTRICAL LIGHTING PLAN 1/4" = 1'-0" **A**

LIGHTING SCHEDULE:

NO.	QTY	LOCATION	MFR / CATALOG NUMBER	DESCRIPTION	#	LAMP TYPE	BALLAST TYPE	MOUNTING TYPE	HT.	VOLT	WATT	REMARKS
B4	14	B.O.H.	MAXLITE MLFP-24DE-45-41	2x4 LED FLAT PANEL	-	LED		RECESSED GRID		120	45	-
E1W1	5	B.O.H.	LIGHTALARMS LCA-2MRS-WHITE	2 HEAD EMERGENCY WHITE	2			WALL	TOP @ 9'-4" U.O.N.	120	18	UNSWITCHED HOT
E1B1	4	RESTROOM & DINING	LIGHTALARMS LCA-2MRS-BLACK	2 HEAD EMERGENCY BLACK	2			WALL	TOP @ 9'-4" U.O.N.	120	18	UNSWITCHED HOT
C1W	18	DINING & RESTROOM	LIGHTALARMS RAF61530W WHITE TRIM	RECESSED LED DOWNLIGHT	1	LED		RECESSED GYP. BD.		120	14	
C1B	9	DINING & RESTROOM	LIGHTALARMS RAF61530B BLACK TRIM	RECESSED LED DOWNLIGHT	1	LED		RECESSED GYP. BD.		120	14	
F19C	3	DINING	SPECTRUM SPC0310LEDXT10L27KWDE1	3" LED PENDANT	1	LED		PENDANT	BOT @ 9'-0" A.F.F.	120	8	
F6	3	DINING	KICHLER 438520Z	9.25" LED PENDANT	1	LED		PENDANT	BOT @ 6'-8" A.F.F.	120	6	
F7	3	DINING	HI-LITES H24212-96-CB15-20WLBL-60P	12" LED PENDANT	1	LED		PENDANT	BOT @ 6'-8" A.F.F.	120	6	
X1B1	1	DINING	LIGHTALARMS CHSLDWF#12	EXIT SIGN, EDGE LIT UNIVERSAL MOUNT LED	-	LED		WALL	BOT @ 7'-0" A.F.F.	120	3	
X1W	4	B.O.H.	LIGHTALARMS QLXN500R-N	EXIT SIGN	-	LED		WALL	BOT @ 7'-0" A.F.F.	120	3	
D1	9	EXTERIOR	TROY B2772	EXTERIOR WALL SCNCE	1	LED		PENDANT	BOT @ 6'-8" A.F.F.	120	100	
E2	1	EXTERIOR EM	LIGHTALARMS CAM-SD-DB-CW	EXTERIOR RATED EM WALL PACK - DARK BRONZE	1	LED		WALL		120	16	

LIGHTING PLAN GENERAL NOTES:

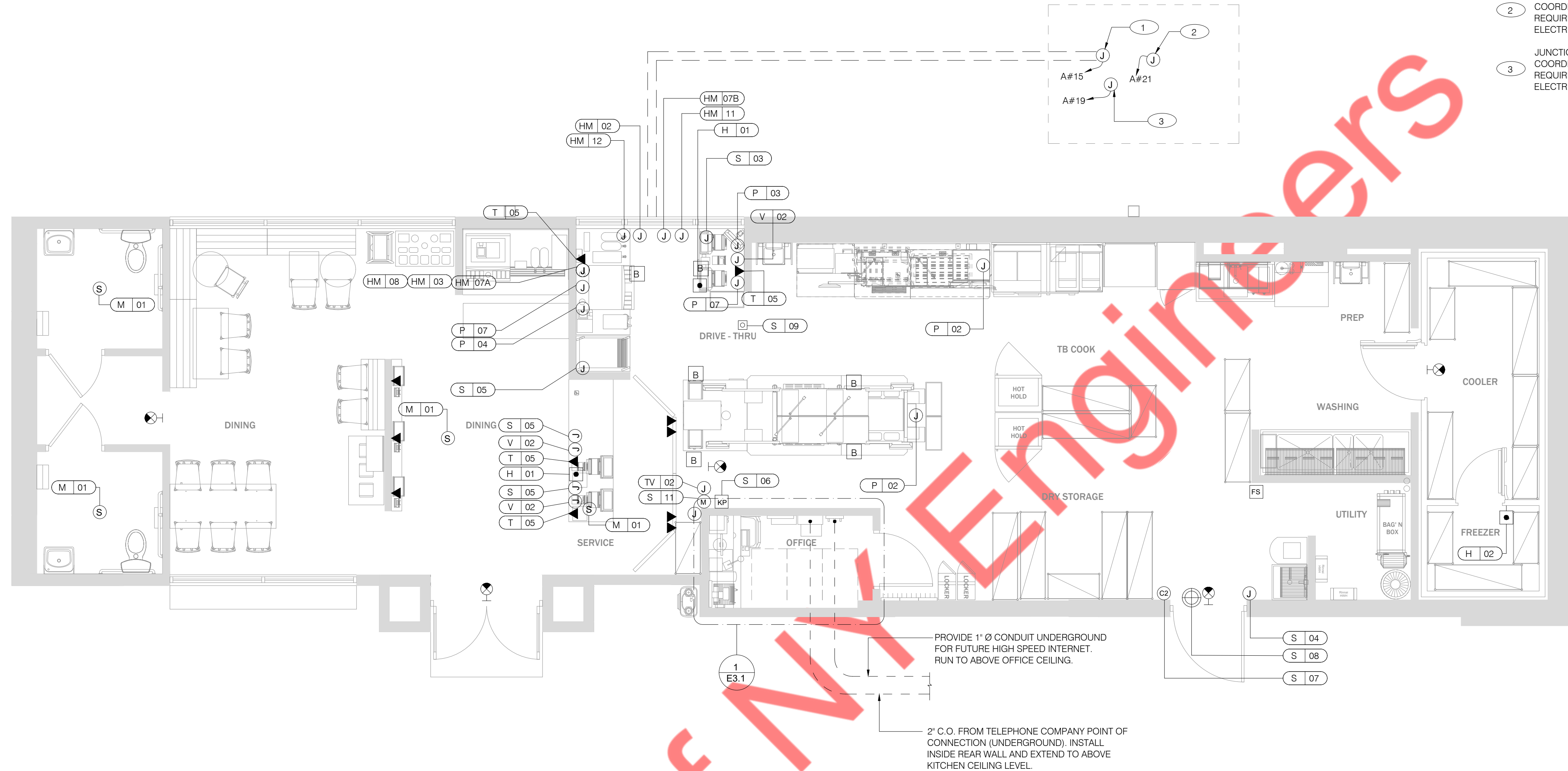
- A. CONFIRM LIGHTING FIXTURE QUANTITIES WITH SUPPLIER.
- B. EMERGENCY AND NORMAL LIGHTING MARKED WITH 'NL' SUBSCRIPT SHALL OPERATE CONTINUOUSLY. PROVIDE UNSWITCHED CONSTANT HOT TO EMERGENCY BALLAST.
- C. EMERGENCY LIGHTING NOT MARKED WITH 'NL' SUBSCRIPT SHALL OPERATE UNDER CONTROL OF LIGHTING SWITCH AS INDICATED. PROVIDE UNSWITCHED CONSTANT HOT TO EMERGENCY BALLAST AND SWITCHED HOT TO NORMAL BALLAST.
- D. ALL CONDUITS ENTERING OR LEAVING COOLER/FREEZER SHALL BE PROVIDED WITH SEAL-OFF FITTING WITH COMPOUND PER NEC 300-(7a).
- E. ALL INTERIOR LIGHTING CIRCUITS TO BE WIRED THROUGH TBCCB. SEE E6.0 THROUGH E6.3.
- F. CONTRACTOR TO FIELD VERIFY CEILING TYPE AND PROVIDE PROPER MOUNTING HARDWARE.
- G. ALL FIXTURES SUPPLIED WITH LAMPS.
- H. ALL EXTERIOR NON-EMERGENCY LIGHT FIXTURES, BUILDING SIGNS, AND EXTERIOR SIGNS SHALL BE CONTROLLED THROUGH PHOTOCELL AND LIGHTING CONTROL RELAYS. SEE E6.0 THRU E6.3 FOR ADDITIONAL DETAILS.

LIGHTING PLAN KEYED WORK NOTES:

- 1 PRE-FABRICATED & PRE-FINISHED SOFFIT. REFER TO ARCHITECTURE DRAWINGS FOR SPECIFICS. (OPTIONAL).
- 2 LIGHTING FIXTURES, CONDUIT, OCCUPANCY SENSOR, CONDUCTORS AND INSTALLATION SHALL BE BY MANUFACTURER OF WALK IN COOLER AND FREEZER. E.C. TO PROVIDE CIRCUITING.
- 3 E.C. TO COMPLETE CIRCUITING FOR WALK IN COOLER AND FREEZER LIGHTING FIXTURE, SWITCHES WHICH WILL BE FACTORY INSTALLED.
- 4 EXHAUST HOOD LIGHT FIXTURES SUPPLIED WITH HOOD AND MOUNTED IN PRE-WIRED J-BOX. COMPLETE CIRCUITING PER SHEET E6.1.
- 5 COORDINATE J-BOX LOCATION WITH WOOD FRAMING SO IT REMAINS CONCEALED BEHIND FIXTURE. VERIFY MOUNTING HEIGHT WITH ARCH. DWGS.
- 6 VERIFY MOUNTING HEIGHT FOR BUILDING SIGN POWER WITH ARCHITECTURAL ELEVATIONS AND SIGN VENDOR.
- 7 PROVIDE POWER CONNECTION TO FACTORY INSTALLED CANOPY LIGHTS. LIGHTS ARE FURNISHED WITH CANOPY. PROVIDE ALL REQUIRED FIELD WIRING. COORDINATE REQUIREMENTS WITH MANUFACTURER.
- 8 PROVIDE POWER CONNECTION TO WALL WASH LIGHT FURNISHED BY SIGN VENDOR. PROVIDE ALL REQUIRED FIELD WIRING. COORDINATE EXACT LOCATION WITH ARCHITECTURAL ELEVATIONS. COORDINATE REQUIREMENTS WITH VENDORS.
- 9 REFER TO ARCHITECTURAL DRAWINGS FOR EXACT LOCATION OF LIGHTING FIXTURE.
- 10 SEAL ALL ELECTRICAL CONDUITS INTO THE WALK-IN COOLER.
- 11 E.C. TO COORDINATE THE FINAL LOCATION OF SWITCHES WITH ARCHITECTURE.
- 12 NEW ELECTRICAL PANELS "A", "B" AND "D". E.C. TO COORDINATE WITH ARCHITECT/OWNER FOR EXACT LOCATION OF THE NEW ELECTRICAL PANEL IN FIELD.
- 13 JUNCTION BOXES FOR EXTERNAL SITE LIGHTING. G.C. TO COORDINATE WITH ARCHITECT/OWNER FOR EXACT LOCATION. ELECTRICAL REQUIREMENT OF SITE LIGHT POLE AND SELECTION OF LIGHTING FIXTURE. ACCORDINGLY PROVIDE THE ELECTRICAL CONNECTIONS FOR SITE LIGHTING.
- 14 JUNCTION BOX FOR PYLON SIGN (IF AVAILABLE). G.C. TO COORDINATE WITH ARCHITECT/OWNER FOR EXACT LOCATION AND ELECTRICAL REQUIREMENT OF PYLON SIGN. ACCORDINGLY PROVIDE THE ELECTRICAL CONNECTION.
- 15 JUNCTION BOX FOR DIRECTIONAL SIGN (IF AVAILABLE). G.C. TO COORDINATE WITH ARCHITECT/OWNER FOR EXACT LOCATION AND ELECTRICAL REQUIREMENT OF DIRECTIONAL SIGN. ACCORDINGLY PROVIDE THE ELECTRICAL CONNECTION.

KEYED WORK NOTES:

- 1 JUNCTION BOX (ELECTRICAL AND DATA) FOR DRIVE THRU MENU BOARD. G.C. TO COORDINATE WITH OWNER FOR EXACT LOCATION AND ELECTRICAL/DATA REQUIREMENT OF DRIVE THRU MENU BOARD IN FIELD. ACCORDINGLY PROVIDE THE ELECTRICAL/DATA CONNECTION.
- 2 JUNCTION BOX (ELECTRICAL AND DATA) FOR ORDER TAKER. G.C. TO COORDINATE WITH OWNER FOR EXACT LOCATION AND ELECTRICAL/DATA REQUIREMENT OF ORDER CANOPY IN FIELD. ACCORDINGLY PROVIDE THE ELECTRICAL/DATA CONNECTION.
- 3 JUNCTION BOX (ELECTRICAL AND DATA) FOR SPEAKER POST. G.C. TO COORDINATE WITH OWNER FOR EXACT LOCATION AND ELECTRICAL/DATA REQUIREMENT OF SPEAKER POST. ACCORDINGLY PROVIDE THE ELECTRICAL/DATA CONNECTION.



VOLUME CONTROL NOTES:

- 1. PATIO SPEAKER: DEDICATED WALL-MOUNT VOLUME CONTROL IN LOCATION OF HEAD-END (TYP. MANAGERS OFFICE).
- 2. DINING ROOM SPEAKERS: DEDICATED WALL-MOUNT VOLUME CONTROL IN LOCATION OF HEAD-END (TYP. MANAGERS OFFICE).
- 3. KITCHEN SPEAKERS: IF CONNECTED TO THE SOUND SYSTEM, CAN EITHER HAVE VOLUME CONTROL BUILT INTO THE SPEAKER ITSELF, OR HAVE A THIRD DEDICATED WALL-MOUNT VOLUME CONTROL IN LOCATION OF HEAD-END (TYP. MANAGERS OFFICE).
- 4. RESTROOM SPEAKERS: VOLUME CONTROL BUILT INTO SPEAKER.

COMMUNICATIONS PLAN 1/4" = 1'-0" A

- HOLD-UP BUTTON (MOUNT 2-1/2" BEHIND COUNTER EDGE)
- Ⓢ MUSIC SYSTEM SPEAKERS
- Ⓢ SECURITY STROBE
- Ⓢ J-BOX
- ◀ 2' x 4' J-BOX W/ DATA PORTS
- Ⓜ MOTION DETECTOR
- Ⓢ OCCUPANCY SENSOR, CEILING MOUNTED. SEE DETAILS 1 & 2 / E7.0
- Ⓢ DOOR CONTACT (LINKED TO AUDIO / VISUAL ALARM)
- Ⓢ "SOUND ALERT" DEVICE
- Ⓢ KP KEYPAD (MTD AT 48" A.F.F.)
- Ⓢ AS ALARM SIREN ABOVE CLG
- Ⓢ B BUMP PAD (MOUNT AT FRONT COUNTER)
- Ⓢ FS HOOD FIRE SUPPRESSION SYSTEM PULL STATION
- Ⓢ USB OUTLET

COMMUNICATIONS LEGEND NTS C

- A. SUPPLY AND INSTALL OUTLETS AND CONDUIT FOR OWNER SUPPLIED AND INSTALLED CABLE AND LOW VOLTAGE WIRING (U.O.N.), TELEPHONE AND MUSIC SYSTEM WIRING SHALL BE SUPPLIED AND INSTALLED. SEE SCOPE OF WORK SHEETS.
- B. SEE SHEETS E3.0 AND E3.1 FOR ELECT. INFO ON POS, SECURITY SYSTEM, CCTV SYSTEM, (OFFICE) COMPUTER, DRIVE-THRU TIMER AND DRIVE-THRU COMMUNICATION SYSTEM.
- C. THIS PLAN INCLUDES CONDUITS AND J-BOXES FOR POS, SECURITY SYSTEM, CCTV SYSTEM, (OFFICE) COMPUTER, TELEPHONE SYSTEM, MUSIC SYSTEM, DRIVE-THRU TIMER AND DRIVE-THRU COMMUNICATION SYSTEM.
- D. ALL OUTLETS AND BOXES MOUNTED IN THE SERVING COUNTER CABINETRY ARE TO BE 24" AFF. INSTALL JUNCTION BOXES WITH CONDUIT UNDER CABINET TO NEAREST WALL AND TO ABOVE CEILING.

COMMUNICATIONS NOTES NTS B

COMMUNICATIONS ROUGH-IN SCHEDULE

COMM. TYPE	COMM. #	EQUIPMENT ITEM	ELEVATION	REMARKS
H	01	UNDER COUNTER HOLD-UP BUTTON		SEE DETAIL 6/E3.1.
H	02	WALL MOUNTED HOLD-UP BUTTON	+18" A.F.F.	SURFACE MTD. 2X4 J-BOX ON INSIDE OF WALK-IN FREEZER HINGE WALL W/ (1) 1/2" CONDUIT TO ABOVE KITCHEN CEILING. BUTTON FACING DOWN. SEE DETAIL 3/E3.1
HM	02	D/T TIMER SIGNAL PROCESSOR J-BOX	+126" A.F.F.	4X4X4" DEEP (MIN.) J-BOX ABV. CLG. W/ (1) 1" CONDUIT TO HM-07B, (1) 1" CONDUIT TO HM-04, (1) 1-1/2" CONDUIT TO HM-08 & (1) 1" CONDUIT TO HM-12. SEE DET. 5/E3.1.
HM	03	D/T BASE STATION J-BOX	+72" A.F.F.	4X4 J-BOX @ D/T BASE STATION W/ (1) 1-1/2" C TO HM-08 & (1) 1-1/2" C TO HM-07A. SEE DETAIL 7/E3.1.
HM	07A	D/T TIMER DISPLAY J-BOX	+62" A.F.F.	2X4 J-BOX W/ (1) 1-1/2" CONDUIT TO HM-03 & (1) 1" C TO HM-04. SEE DETAIL 7/E3.1.
HM	07B	D/T TIMER DISPLAY J-BOX	+126" A.F.F.	2X4 J-BOX ABV. CEILING W/ (1) 1" CONDUIT TO HM-02. SEE DETAIL 7/E3.1
HM	08	D/T J-BOX	+96" A.F.F.	4X4X4" DEEP (MIN.) J-BOX W/ (1) 1-1/2" CONDUIT TO HM-03 & (1) 1-1/2" CONDUIT TO HM-02. SEE DETAIL 7/E3.1.
HM	11	D/T CONTROL UNIT J-BOX	+126" A.F.F.	2X4 J-BOX ABV. CEILING W/ (1) 1" CONDUIT TO HM-12. SEE DETAIL 7/E3.1.
HM	12	D/T/ ETHERNET SWITCH J-BOX	+126" A.F.F.	2X4 J-BOX ABV. CEILING W/ (1) 1" CONDUIT TO HM-11, (1) 1" CONDUIT TO HM-02 & (1) 1" CONDUIT TO OFFICE ROUTER.
M	01	SPEAKER, CEILING MOUNTED	CEILING	SPEAKER WIRING FROM SPEAKERS IN DINING ROOM TO AMPLIFIER IN OFFICE. FOR EXACT LOCATION OF SPEAKERS, SEE LIGHTING PLAN SHEET E4.0.
P	02	KITCHEN MONITOR J-BOX	CEILING	2X4 J-BOX FLUSH @ CEILING. FOR M.A.P.S. LINE MONITOR J-BOX.
P	03	BUMP PAD J-BOX	+84" A.F.F.	2X4 J-BOX W/ (1) 3/4" CONDUIT TO ABOVE CEILING
P	04	POS J-BOX W/ 2-1/2" DIA HOLE IN COVER PLATE	+24" A.F.F.	2X4 J-BOX W/ (1) 3/4" CONDUIT TO P-03.
P	07	J-BOX SECURITY SYSTEM	+24" A.F.F.	6X6X4" DEEP J-BOX W/ 2-1/2" CONDUIT IN WALL TO ABV. CEILING, WITH PULL STRING FOR POS.
S	03	J-BOX SECURITY SYSTEM	+30" A.F.F.	2X4 J-BOX W/ (1) 1/2" CONDUIT TO ABV. CLG. FOR HOLD-UP BUTTON SIGNAL WIRE.
S	04	J-BOX SECURITY SYSTEM	+84" A.F.F.	2X4 J-BOX W/ COVER & (1) 1/2" CONDUIT TO ABOVE CEILING.
S	05	J-BOX SECURITY SYSTEM	+24" A.F.F.	2X4 J-BOX W/ 3/4" CONDUIT TO S-05 AND TO ABOVE CEILING.
S	06	J-BOX SECURITY SYSTEM	+48" A.F.F.	2X4 J-BOX W/ (1) 1/2" CONDUIT TO ABOVE CEILING FOR SECURITY SYSTEM KEYPAD.
S	07	J-BOX SECURITY SYSTEM	TOP OF JAMB	2X4 J-BOX W/ (1) 1/2" CONDUIT TO ABOVE CEILING FOR DOOR CONTACT.
S	08	"SOUND ALERT" DEVICE	CEILING	CONNECT TO SECURITY SYSTEM.
S	09	SECURITY STROBE LIGHT	CEILING	CONNECT TO SECURITY SYSTEM.
S	10	ALARM SIREN	ABV. CEILING	CONNECT TO SECURITY SYSTEM.
S	11	MOTION / HEAT DETECTOR	+78" A.F.F.	STUB 1/2" CONDUIT. D5835 OR D5820. MOUNT 90" A.F.F. FOR OFFICE

COMMUNICATIONS ROUGH-IN SCHEDULE

COMM. TYPE	COMM. #	EQUIPMENT ITEM	ELEVATION	REMARKS
T	03	VOICE LINE PHONE JACK	+42" A.F.F.	2X4 J-BOX W/ DOUBLE RJ-11 PHONE JACK & 1" CONDUIT TO ABOVE CEILING.
T	04	COMPUTER LINE PHONE JACK	+42" A.F.F.	2X4 J-BOX W/ RJ-11 PHONE JACK AND 1" CONDUIT TO ABOVE CEILING.
T	05	J-BOX	+24" A.F.F.	2X4 J-BOX W/ 1" CONDUIT TO ABOVE CEILING.
TV	02	SECURITY CAMERA	+96" A.F.F.	MINI-DOME CAMERA MTD. TO BTM. OF MENU BOARD BULKHEAD. 2X4 J-BOX W/ (1) 1/2" CONDUIT TO ABOVE CEILING MTD. ON BACK SIDE OF BULKHEAD (6 TOTAL).
V	02	J-BOX	+24" A.F.F.	2X4 J-BOX W/ 1/2" CONDUIT TO ABOVE CEILING FOR ETHERNET CABLES.
S	01	J-BOX SECURITY SYSTEMS	+48" A.F.F.	4X4 J-BOX AT SECURITY SYSTEM CONTROL PANEL W/ (1) 2" CONDUIT TO S-02
S	02	J-BOX SECURITY SYSTEMS	+106" A.F.F.	4X4 J-BOX ADJACENT TO T-02 W/ (1) 2" CONDUIT TO S-01
S	12	J-BOX SECURITY DVR	+42" A.F.F.	2X4 J-BOX FOR SECURITY DVR
T	02	SECURITY SYSTEM PHONE JACK	+106" A.F.F.	2X4 J-BOX ADJACENT TO S-02 W/ RJ-31X PHONE JACK
V	01	ALTERNATE PAYMENT ROUTER BOX	+90" A.F.F.	4X4 J-BOX W/ 1/2" CONDUIT TO ABOVE CEILING FOR ETHERNET CABLES (DOUBLE JACK)
HM	10	OCB SWITCH	+52" A.F.F.	2X4 J-BOX W/ 1" CONDUIT TO ABOVE CEILING
IR	01	IRRIGATION TIMER	+80" A.F.F.	4X4 J-BOX W/ 1" CONDUIT TO IRRIGATION VALVES