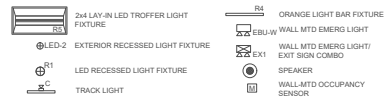


1 LIGHTING PLAN
SCALE: 1/4" = 1'-0"

CEILING LEGEND



DD LIGHTING SCHEDULE				
CODE	DESCRIPTION	MANUFACTURER	PRODUCT	WATT
B	PROVIDED BY WALK-IN BOX MANUFACTURER	VARIES	VARIES	VARIES
C	TRACK LIGHT AND HEAD USED @WALL WARTWORK AND WHERE LIGHTING IS OPEN	JUNO	R60L-35K-BL	9.1W
R1	RECESSED LED LIGHT FIXTURE	CREE	R60L-35K-BL	21W
R4	LED LINEAR LIGHT BAR USED ABOVE FRONT LINE (NOTE: AVAILABLE IN INCREMENTS OF 1' WITH A 1'x1' CORNER)	PINNACLE ARCHITECTURAL LIGHTING	EX3D-A-N-839VHO-8-S/A/C120ST	4W/FT
R5	2X4 LAY-IN LED LIGHT FIXTURE	LSI	SFP24-LED-50-UE-DM-35-U	50W
LED-2	EXTERIOR RECESSED LIGHT FIXTURE USED UNDER ORANGE BEAM CANOPY	LUMARK	XTORGB-W	18W
EBU-W	ULTRA COMPACT LED EMERGENCY UNIT (WHITE)	EXITRONIX	EBU-W-LED-41-S2	10W
EX-1	COMBO LED EXIT SIGN W/LIGHT HEADS (WHITE)	EXITRONIX	VLED-U-WH-EL90	5W

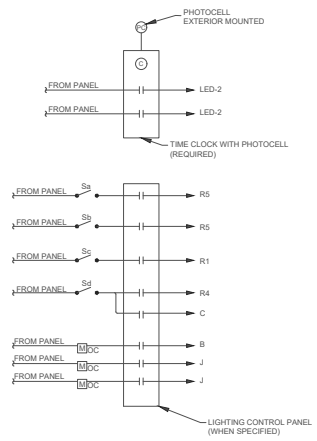
LIGHTING SCHEDULE NOTES

1. PROVIDE ALL FIXTURES COMPLETE WITH LAMPS. REFER TO NATIONAL ACCOUNT SOURCE FOR INFO FOR LAMP SPECS & VILLA LIGHTING RELAMPING PROGRAM. ALTERNATE FOR DRYWALL OR EMERGENCY LIGHTING CAN BE FOUND UNDER NATIONAL ACCOUNTS.
2. ALL INCANDESCENT LAMPS SHALL BE RATED 120 VOLTS.
3. ALL BALLAST SHALL BE HIGH POWER FACTOR. FLUORESCENT BALLAST FOR T8 LAMPS TO BE ADVANCED MANUFACTURED OPTIMUM WATT MIXER.
4. PROVIDE HOLD DOWN CLIPS FOR EACH CORNER OF FLUORESCENT GRID TROFFERS.
5. PROVIDE ALL REQUIRED MOUNTING OR HANGING HARDWARE.
6. COORDINATE AND VERIFY ALL FIXTURE INFORMATION, TYPES AND FINAL LOCATIONS WITH THE REFLECTED CEILING PLAN.
7. REFER ARCHITECTURAL DRAWINGS FOR MORE INFORMATION ON LIGHT FIXTURES.

CONTROL RELAY PANEL SCHEDULE

DESCRIPTION	FIXTURE TAG	OKT WATTS	CONTROL VIA	CIRCUIT #	RELAY #
EXTERIOR LIGHT FIXTURE USED UNDER ORANGE BAND	LED 2	141W	TC-1	P-2	1
EXTERIOR LIGHT FIXTURE USED UNDER AWNING	LED 2	51W	TC-2	P-2	2
2X4 USED IN BACK OF HOUSE AREA	R5	400W	5a	P-8	3
2X4 USED IN BACK OF HOUSE AREA	R5	200W	5b	P-8	4
CAN FIXTURES USED IN SERVICE AREA	R1	294W	5c	P-5	5
ORANGE FINISHED FIXTURE USED ABOVE FRONTLINE	R4	76W	5d	P-6	6
TRACK LIGHT AND HEAD USED	C	50W	5d	P-6	7
FIXTURES USED WALK-IN COOLER AND FREEZER AREAS	B	120W	OCC SENSOR	P-8	8
JUNCTION BOX	J	96W	OCC SENSOR	P-8	9
JUNCTION BOX	J	48W	OCC SENSOR	P-8	10

WHEN THE LIGHTING CONTROL IS SHARED WITH DIMMING CAPABILITIES, THE SHARING OF NEUTRALS IS STRICTLY PROHIBITED.



GENERAL NOTES

- A. ALL WORK SHALL COMPLY WITH ALL LOCAL AND STATE CODES AND AUTHORITIES HAVING JURISDICTION.
- B. THE CONTRACTOR SHALL SECURE AND PAY FOR ALL REQUIRED PERMITS AND ARRANGE ALL REQUIRED INSPECTIONS.
- C. THE CONTRACTOR SHALL COORDINATE HIS WORK WITH OTHER CONTRACTORS AND TRADES.
- D. THESE DRAWINGS, AS PREPARED, ARE DIAGRAMMATIC BUT SHALL BE FOLLOWED AS CLOSELY AS CONSTRUCTION OF THE PROJECT AND THE WORK OF THE TRADES WILL PERMIT. EQUIPMENT LOCATIONS INDICATED ARE APPROXIMATE. COORDINATE EXACT LOCATIONS AND REQUIRED CLEARANCES WITH EQUIPMENT SUPPLIER AND ALL TRADES PRIOR TO INSTALLATION.
- E. THE CONTRACTOR SHALL FURNISH AND INSTALL ALL THE EQUIPMENT INDICATED WITHIN THESE DRAWINGS UNLESS OTHERWISE NOTED. VERIFY LOCATION AND DIMENSIONS IN THE FIELD PRIOR TO FABRICATION AND / OR INSTALLATION.
- F. ALL ROOF PENETRATIONS SHALL BE AT THE CONTRACTOR'S EXPENSE. COORDINATE WITH OWNER'S ROOFING CONTRACTOR SO AS NOT TO VOID ANY EXISTING ROOF WARRANTIES.
- G. THE ENTIRE INSTALLATION SHALL BE GUARANTEED FREE OF DEFECTS AND CONTRACTOR SHALL REPAIR AND / OR REPLACE ANY DEFECTIVE MATERIALS OR EQUIPMENT AT NO COST TO THE OWNER FOR A MINIMUM PERIOD OF ONE YEAR FROM THE DATE OF ACCEPTANCE BY ARCHITECT OR ENGINEER.
- H. ALL WORK SHALL BE SUBJECT TO THE ACCEPTANCE AND APPROVAL OF THE ARCHITECT AND OWNER. THE ARCHITECT SHALL BE NOTIFIED OF ANY AND ALL DISCREPANCIES BETWEEN FIELD CONDITIONS AND THE CONTRACT DOCUMENTS BEFORE PROCEEDING WITH THAT PORTION OF THE WORK. FAILURE OF PROPER NOTIFICATION DOES NOT RELIEVE THE CONTRACTOR. THE CONTRACTOR SHALL CORRECT ANY AND ALL WORK ARISING FROM SUCH FAILURES TO COORDINATE DISCREPANCIES TO THE SATISFACTION OF THE ARCHITECT WITHOUT ADDITIONAL COST TO THE OWNER.
- I. COORDINATE ALL EQUIPMENT UTILITY INFORMATION SHOWN ON THIS SHEET WITH THE DUNKIN BRANDS EQUIPMENT SCHEDULE AND EQUIPMENT MANUFACTURER'S CUT SHEETS.
- J. ALL EXTERIOR LIGHTS TO BE TIMECLOCK CONTROLLED.
- K. ALL 15 AND 20 AMP, 120 VOLT RECEPTACLES IN KITCHEN AND PREP AREAS SHALL BE GFI TYPE.
- L. ALL JUNCTION BOXES SHOWN ON THIS PLAN ARE TO BE INSTALLED ABOVE THE FINISHED CEILING.
- M. ALL EMERGENCY AND EXIT FIXTURES SHALL BE CONNECTED TO LOCAL LIGHTING CIRCUIT AHEAD OF ANY SWITCHING. PROVIDE ADDITIONAL FIXTURES AS NEEDED TO MEET THE CODE REQUIREMENTS PER LOCAL REQUIREMENTS.
- N. PROVIDE WOOD BLOCKING BEHIND ALL EXTERIOR LIGHTING FIXTURES COORDINATE WITH GENERAL CONTRACTOR.
- O. THE CONTRACTOR IS RESPONSIBLE FOR REVIEWING THE LATEST KITCHEN PLANS AND EQUIPMENT CUTS SHEETS FOR PROPER EQUIPMENT LOCATIONS AND CONNECTION REQUIREMENTS PRIOR TO STARTING WORK.

CARBON MONOXIDE MONITORING:
THE DESIGN PROFESSIONAL IS RESPONSIBLE FOR PROVIDING A MEANS OF MONITORING AND ALARMING THE OCCUPANTS UPON THE PRESENCE OF CARBON MONOXIDE (CO). THE MEANS OF DETECTION SHALL BE LOCATED NEAR EQUIPMENT THAT PRODUCES PRODUCT OF COMBUSTION LOCATIONS SHALL INCLUDE BUT NOT BE LIMITED TO: GAS FIRED Ovens, GAS FIRED WATER HEATERS, GAS FIRED FURNACES, ETC.

KEYED NOTES

1. OUTLINE OF WALK-IN COOLER/FREEZER WITH LIGHT FIXTURES AND LAMPS FURNISHED BY COOLER MANUFACTURER, AND INSTALLED BY ELECTRICAL CONTRACTOR. PROVIDE DIRECT CONNECTION TO JUNCTION BOX ON PREFABRICATED COOLER/FREEZER. INCLUDE ALL INTERCONNECTING WIRING FOR ALL CONTROL DEVICES, THERMOSTATS, LIGHT SWITCHES, LIGHT FIXTURES, ETC. FOR A COMPLETE INSTALLATION.
2. CONNECT ALL NIGHT LIGHTING, EMERGENCY EGRESS LIGHT FIXTURES, EXIT SIGNS, EMERGENCY BATTERY PACK/BALLAST, DRIVERS ETC TO PANEL "P-2".
3. EXISTING LOW VOLTAGE 6-BUTTON WALL STATION WITH 2-HOUR OVERRIDE. E.C. TO VERIFY ITS OPERATING CONDITION AND PROVIDE NEW IF FOUND INOPERABLE.
4. PROVIDE 120V POWER TO HOOD LIGHTING. INCLUDE ALL SWITCHING FOR EXHAUST HOOD LIGHT AND FAN.
5. SPEAKER AND SOUND SYSTEM TO BE PROVIDED AND INSTALLED BY ELECTRICAL CONTRACTOR. LOCATE VOLUME CONTROL IN THE OFFICE. SEE ARCHITECTURAL CEILING PLAN FOR EXACT LOCATION AND CONTROL.
6. CIRCUIT EXTERIOR CANOPY LIGHTS AND LED LIGHTS ABOVE THROUGH LIGHTING CONTROL PANEL.
7. INSTALL SWITCH HEIGHT MOUNTED OCCUPANCY SENSOR, HUBBEL MODEL LHRS1, IN THE RESTROOM AND OFFICE.
8. PROVIDE CONTROL RELAY PANEL AS SPECIFIED BY THE LIGHTING VENDOR. PROVIDE AND INSTALL DIGITAL SWITCHES(S) AS REQUIRED.
9. EXHAUST FAN SHALL BE CIRCUITED & CONTROLLED ALONG WITH THE LIGHT FIXTURE IN THE SAME ROOM.
10. LIGHT FIXTURES WITHIN EXISTING RESTROOM SHALL BE CIRCUITED TO P-8.
11. CONTROL RELAY PANEL. SEE LIGHTING PLAN FOR SCHEDULE AND CONTROL DETAIL DRAWINGS FOR ADDITIONAL INFORMATION.

MUSIC SYSTEM NOTES

- THE MUSIC SYSTEM IS A REQUIREMENT OF THE BRAND AND NO LONGER OPTIONAL. ARCHITECTS TO UPDATE ARCHITECTURAL DRAWINGS PER GUIDELINES DIRECTLY BELOW.
1. MUSIC SYSTEM IS REQUIRED IN ALL NEW AND REMODEL STORES. ALL CEILING SPEAKERS TO BE FLUSH MOUNTED @ GYP. BOARD CLG. & ACT CLG. SPEAKERS @ OPEN CEILING TO BE MOUNTED ON LOWER CORD OF ROOF TRUSSES ALL INTERIOR SPEAKERS TO MATCH SURFACE IT IS MOUNTED ON. ALL EXTERIOR SPEAKERS TO BE BLACK, WITH EXTERIOR GRADE CONSTRUCTION.
 2. MUSIC SYSTEM IS REQUIRED IN ALL NEW AND REMODEL STORES. MUSIC SYSTEM TO USE DBI APPROVED PROGRAMMING.
 3. ALL CEILING SPEAKERS TO BE FLUSH MOUNTED WHITE. ALL EXTERIOR SPEAKERS TO BE BLACK, WITH EXTERIOR GRADE CONSTRUCTION.
 4. ONE SPEAKER IN EACH BATHROOM TO BE FLUSH MOUNTED WHITE.
 5. A MINIMUM OF TWO SPEAKERS IN THE SEATING AREA AND SPEAKERS IN THE SERVICE AREA.
 6. A MINIMUM OF TWO SPEAKERS AT EXTERIOR SEATING AREAS WHERE APPLICABLE.
 7. SPEAKER AT EXTERIOR OF BUILDING ADJACENT TO ENTRY.
 8. PROVIDE AND INSTALL SEPARATE VOLUME CONTROLS FOR EACH AREA (RESTROOMS, SEATING AREA, EXTERIOR).
 9. HARDWARE TO BE INSTALLED IN THE OFFICE. FIELD VERIFY AND COORDINATE WITH FRANCHISE FOR THE EXACT LOCATION OF THE UNIT AND VOLUME CONTROLS.

KEYED NOTES

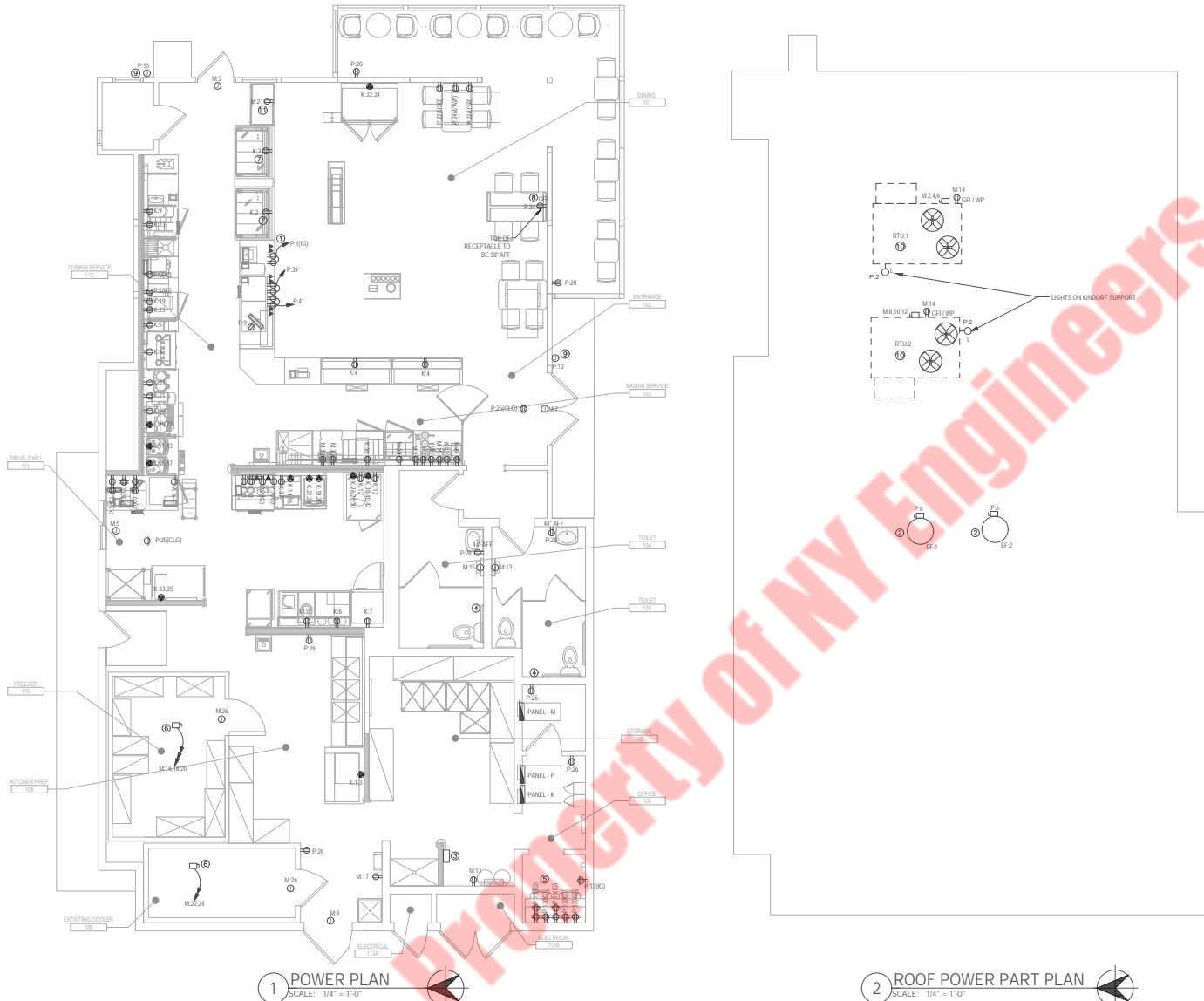
- SEE POS AND COMMUNICATIONS. PLAN FOR FURTHER INFORMATION REGARDING POS AND UNDER COUNTER ELECTRICAL SERVICE.
- EXHAUST FANS EF-1 AND EF-2 SHALL BE CIRCUITED AND CONTROLLED ALONG WITH LIGHTING IN THE AREA FOR WHICH EXHAUST IS PROVIDED.
- CONTROL RELAY PANEL. SEE LIGHTING PLAN FOR SCHEDULE AND CONTROL DETAIL DRAWINGS FOR ADDITIONAL INFORMATION.
- E.C. TO PROVIDE POWER IF ALTERNATE "HANDS FREE" TOILET FIXTURES ARE BEING PROVIDED.
- REFER TO POS COMMUNICATIONS FLOOR PLAN FOR LOCATIONS AND ELEVATIONS OF OFFICE RECEPTACLES.
- SINGLE POINT CONNECTION FOR WALK-IN FREEZER AND REFRIGERATOR. THE CONTRACTOR SHALL CONFIRM ELECTRICAL REQUIREMENTS AND MEANS OF DISCONNECT OF THE ROOF MOUNTED CONDENSING UNITS AND EVAPORATOR UNITS LOCATED WITHIN THE BOXES. ALSO, PROVIDE ELECTRICAL CONNECTION OF DOOR HEATER, CONDENSATE DRAIN AND HEAT TRACE WIPE.
- MOUNT RECEPTACLES FOR FRONTLINE BAKERY DISPLAY CASES IN MILLWORK AS REQUIRED. PROVIDE FLEXIBLE CONDUIT WHP FOR FINAL INSTALLATION AFTER MILLWORK IS INSTALLED. COORDINATE AS REQUIRED.
- INSTALL UNDER COUNTER CABLE MANAGEMENT SYSTEM, WIRE MOLD UTMS OR EQUAL. COORDINATE WITH TABLE SUPPLIER FOR EXACT MOUNTING REQUIREMENTS.
- ELECTRICAL CONTRACTOR SHALL PROVIDE JUNCTION BOX FOR THE EXTERIOR SIGNAGE. INSTALL THE JUNCTION BOX WITHIN THE BUILDING. THE SIGNS SHOULD BE SUPPLIED WITH WHIPS FOR FINAL CONNECTION TO THIS JUNCTION BOX. COORDINATE WITH THE SIGN VENDOR ON THE QUANTITY AND LOCATION OF THE REQUIRED JUNCTION BOXES. THE CONTRACTOR SHALL PROPERLY SIZE THE JUNCTION BOX BASED ON THE QUANTITY OF CONNECTIONS REQUIRED. VERIFY LOCATION WITH ARCHITECTURAL ELEVATION ON SHEET AS.5 AND SIGN VENDOR PRIOR TO INSTALLING. ALL SIGNS SHALL BE CONTROLLED VIA TIME CLOCK.
- EXISTING RTUS TO REMAIN. PROVIDE 3-PHASE, 208 VOLTS SUPPLY AS SHOWN IN PANEL "M" WITH ISADSP CIRCUIT BREAKER. E.C. TO FIELD VERIFY OPERABLE CONDITION OF EXISTING BRANCH CIRCUIT FEEDING THE RTU AND PROVIDE NEW IF FOUND INOPERABLE.
- ELECTRICAL OUTLET FOR COKE COOLER. E.C. TO VERIFY POWER REQUIREMENTS WITH MANUFACTURER.

COORDINATE WITH ARCHITECT TO CONFIRM COLOR OF RECEPTACLES PRIOR TO ORDERING.

RECEPTACLES TAGGED WITH "USB" IN THE SALES & SEATING AREAS SHALL BE HUBBELL #USB15X2V (WHITE) / NP26W (WHITE) COMBO USB CHARGER WITH TAMPER-RESISTANT RECEPTACLE.
SEATING AREA RECEPTACLES SHALL BE WHITE WITH WHITE COVER PLATE AND ARE TO BE MOUNTED AT 18" AFF.

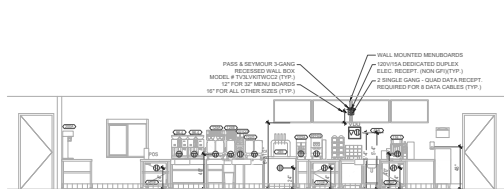
POWER DEVICE LEGEND

- DUPLEX RECEPTACLE, 20A, 120V
- QUAD RECEPTACLE, 20A, 120V
- SPECIAL RECEPTACLE, VOLTAGE AND AMPERAGE BASED ON CONNECTED CIRCUIT
- JUNCTION BOX
- DISCONNECT SWITCH - FUSED OR UNFUSED

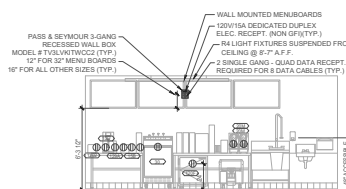


1 POWER PLAN
SCALE: 1/4" = 1'-0"

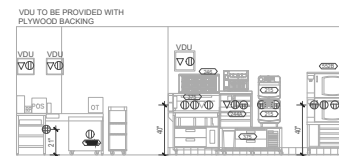
2 ROOF POWER PART PLAN
SCALE: 1/4" = 1'-0"



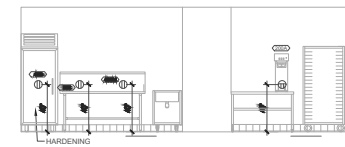
3 INTERIOR ELEVATION AT SERVICE AREA
SCALE: N.T.S.



4 KITCHEN PREP
SCALE: N.T.S.



5 DUNKIN SERVICE/KITCHEN PREP/STORAGE
SCALE: N.T.S.



6 KITCHEN PREP/STORAGE
SCALE: N.T.S.

G.C. TO COORDINATE ALL LOW VOLTAGE WORK WITH OWNER.

BRAND REQUIRES (2) HIGH SPEED CONNECTIONS, ONE FOR THE MNS ROUTER, AND ANOTHER (IF REQUIRED) FOR NON-BRAND APPROVED ITEMS THAT CANNOT USE THE MNS ROUTER PORTS (ATM, NON-MARCH SECURITY SYSTEMS, INTERNET BASED MUSIC).

BRAND REQUIREMENTS DICTATE THAT A MINIMUM OF THREE CONDUITS BE USED FOR DATA LINES BETWEEN THE OFFICE AND OTHER PARTS OF THE STORE. ONE CONDUIT IS TO BE DEDICATED TO POS WIRING, ANOTHER FOR DIGITAL MENUBOARD DATA LINES, AND A THIRD FOR NON-POS ITEMS (I.E. SECURITY CAMERAS, DT TIMERS, HEAD SET WIRING).

PROVIDE DATA FOR CUSTOMER KIOSKS, COORDINATE EXACT REQUIREMENTS AND FINAL LOCATIONS WITH ARCHITECT AND OWNER PRIOR TO ROUGH-IN.

PROVIDE DATA FOR "BUMP BUMP" COORDINATE EXACT REQUIREMENTS AND FINAL LOCATIONS WITH ARCHITECT AND OWNER PRIOR TO ROUGH-IN.

DATA CONNECTIONS FOR DIGITAL MENU BOARD, CONFIRM REQUIREMENTS AND LOCATION WITH ARCHITECTURAL DRAWINGS.

G.C. ELECTRICAL CONTRACTOR (EC) TO COORDINATE WHICH OPTION IS TO BE SELECTED BY FRANCHISEE (FEE) PRIOR TO BIDDING OR PERFORMING WORK. AUTHORITY HAVING JURISDICTION (AHJ) MAY REQUIRE FULL WIRE PREP BY GC/EC. GC TO ALERT CM, FEE, AND DMB INSTALLER (VA PHONE AND E-MAIL) IF GC/EC MUST PERFORM ALL ELECTRICAL INSTALL WORK.

G.C. POWER/DATA RESPONSIBILITY

- GC'S ELECTRICIAN TO RUN DEDICATED CONDUIT FROM POWER PANEL TO JUNCTION BOX (J-BOX) ON BACK SIDE OF MENUBOARD FASCIA AT CENTERLINE OF POS
- GC'S ELECTRICIAN TO RUN CONDUIT WITH J-BOX FROM BACK SIDE OF MENU BOARD FASCIA AT CENTERLINE OF POS TO OFFICE

DMB VENDOR POWER/DATA RESPONSIBILITY

- CUT HOLE IN MENUBOARD FASCIA FOR POWER/DATA STACK
- INSTALL POWER/DATA STACK IN FASCIA
- RUN ELECTRICAL CONDUCTOR WIRE FROM MENU BOARD FASCIA TO ELECTRICAL PANEL
- MAKE FINAL ELECTRICAL CONNECTION AT POWER/DATA STACK
- MAKE FINAL ELECTRICAL CONNECTION TO CIRCUIT AT POWER PANEL
- RUN CAT5E CABLES AND TERMINATE ENDS AT MENUBOARD FASCIA POWER/DATA STACK AND IN OFFICE

1 POS COMMUNICATION PLAN

SCALE: 1/4" = 1'-0"



POS-COMMUNICATIONS EQUIPMENT SCHEDULE

KEY NOTE	QTY	DESCRIPTION	LOCATION	VOLTS	AMPS	TRANSFORMER	LOVO TERM	EXCEPTIONS/NOTES
POS EQUIPMENT								
1	3	POINT OF SALES TERMINAL (POS)	(2) DB FRONT COUNTER, (1) DT	100-120V	2.0	NO	RJ45	
2	5	RECEIPT PRINTER	(2) DB FRONT COUNTER, (1) DT	100-240V	2.0	YES	RJ45	
3	3	PREP PRINTER	(1) ESPRESSO STATION, (1) DUNKIN' SANDWICH STATION	100-240V	1.2	YES	RJ45	
4	5	VOU	(7) DT CONVEYER, (3) DB SANDWICH STATION, (1) DB FRONT LINE, (1) DT POS	100-240V	1.5	NO	N/A	
5	1	VOU CONTROLLER (PC BASED)	(1) DT POS	100-120V	1.0	YES	RJ45	
6	1	POS NETWORK HUB / SWITCH	POS COUNTER FRONT CHASE	100-120V	0.5	YES	RJ45	
7	1	POS SITE CONTROLLER	POS COUNTER FRONT CHASE	100-120V	4.0	NO	RJ45	
8	1	PRINTER / FAX / COPIER (B.O.H.)	(1) DB FRONT COUNTER, (1) DT	100-120V	8.2	NO	N/A	
9	3	SCANNER	(2) DB FRONT COUNTER, (1) DT				RJ45	CONNECTED TO POS UNITS
10	1	POS CONFIRMATION DISPLAY	BEHIND COUNTER AT DT BRANCH				RJ45	CONNECTED TO DT POS UNIT IF ORDER THRU POS NOT QT DEDICATED, IF CASH DRAWER ON DT POS, AUTOMATIC CON CHANGER IS OPTIONAL
12	3	CASH DRAWER	UNDER CTR-ALL POS EXCL. B.T.	N/A	N/A	N/A	RJ45	
OTHER COMMUNICATIONS DEVICES								
15	1	DRIVE THROUGH (DT) TIMER CONSOLE	OFFICE	120V	?	NO	RS232	MUST BE WITHIN 60" OF DISPLAY
16	0	DT REMOTE DISPLAY	NEAR DT, WIRE TO DRIVE SERVICE AREA	LOW VOLT	?	NO		
PHONE & DATA LINES								
18	0	SPARE						
19	0	SPARE						
20	1	PHONE LINE	OFFICE	LOW VOLT	N/A	N/A	RJ45	FAX LINE FOR OFFICE
21	1	PHONE LINE	OFFICE	LOW VOLT	N/A	N/A	RJ45	PHONE LINE FOR OFFICE
22	0	SPARE						
23	1	HIGH SPEED INTERNET (MNS)	OFFICE	LOW VOLT	N/A	N/A	RJ45	FOR SITE CONTROLLER & BOH PC
24	1	MARCH SYSTEMS SECURITY	SECURITY SYSTEM	LOW VOLT	N/A	N/A	RJ45	FOR MARCH SYSTEMS- PLUGS INTO MNS ROUTER PORT #2
25	6	DIGITAL MENUBOARD	OFFICE/MB SOFFIT	LOW VOLT	N/A	N/A	RJ45	BY VENDOR- PLUGS INTO MNS ROUTER PORT #4
26	0	BRAND APPROVED WIFI	OFFICE	LOW VOLT	N/A	N/A	RJ45	BY VENDOR- PLUGS INTO MNS ROUTER PORT #5
0	0	DSL/CABLE	OFFICE	LOW VOLT	N/A	N/A	RJ45	FOR NON-BRAND SUPPORTED APPLICATIONS (ATM, MUSIC, NON-MARCH SURVEILLANCE, ETC.)

GENERAL NOTES

- REFER TO [HTTP://EXTRANET.DUNKINBRANDS.COM](http://extranet.dunkinbrands.com) FOR A LISTING OF APPROVED POS VENDORS BY CONCEPT.
- FINAL POS DRAWINGS NEED TO BE PROVIDED TO POS VENDOR THAT IS SELECTED.
- POS VENDORS REQUIRE DEDICATED ISOLATED GROUNDING (DIG) OUTLETS ON A 20 AMP CIRCUIT DEDICATED ONLY TO POS EQUIPMENT. 60HZ, 120V/-10%. ALL POS TERMINALS AND VIDEO DISPLAY DEVICES REQUIRE A DUPLEX OUTLET. THE BACK OFFICE CONTROLLER REQUIRES A QUAD OUTLET. THE NETWORK SWITCH REQUIRES A DUPLEX. IF FEDERAL, STATE, OR LOCAL WIRING CODES DO NOT MEET THIS REQUIREMENT, CONTACT THE POS VENDOR FOR INFORMATION ON ADDITIONAL EQUIPMENT THAT CAN BE PURCHASED TO MEET THIS REQUIREMENT. IF THIS REQUIREMENT IS NOT MET, THE POS SYSTEM WARRANTY IS INVALID.
- ALL POWER INDICATED ON THIS PLAN MUST HAVE A THIRD WIRE, ISOLATED GROUND, AND BE TERMINATED WITHIN (4) FEET OF THE DEVICE.
- KG-5362 RECEPTACLES MUST BE USED FOR ALL POS UNITS, VOU UNITS AND SITE CONTROLLER UNIT (IN OFFICE). LABEL RECEPTACLES "POS ONLY".
- LOW VOLTAGE WIRE IS REQUIRED TO BE CATEGORY 5 CABLE RUN IN 1/2" CONDUIT FOR POS EQUIPMENT ONLY, AND MUST BE TERMINATED WITH RJ45 JACKS. ALL POS EQUIPMENT LINES TERMINATE AT THE FRONT COUNTER CHASE.
- A 12" MINIMUM SEPARATION MUST BE MAINTAINED BETWEEN LOW VOLTAGE WIRES AND POWER WIRING (TO AVOID ELECTRICAL INTERFERENCE).
- BRAND REQUIREMENTS DICTATE THAT A MINIMUM OF THREE CONDUITS BE USED FOR DATA LINES BETWEEN THE OFFICE AND OTHER PARTS OF THE STORE. ONE CONDUIT IS TO BE DEDICATED TO POS WIRING, ONE FOR DIGITAL MENUBOARD DATA LINES, AND ANOTHER FOR NON-POS ITEMS (I.E. SECURITY CAMERAS, DT TIMERS, HEAD SET WIRING).
- EXACT # OF RECEPTACLES ON OFFICE MUST BE COORDINATED ON A PROJECT-BY-PROJECT BASIS IN TERMS OF EQUIPMENT LOCATED IN THE OFFICE.
- ALL CEILING MOUNTED VOUS TO BE SUSPENDED FROM UNISTRUT BY THREADED ROD W/ WHITE PVC SLEEVE. CONNECT UNISTRUT TO ROOF STRUCTURE. VOU BY POS VENDOR. UNISTRUT & THREADED ROD BY G.C. UNISTRUT TO SUPPORT MINIMUM 50 LB. WEIGHT
- VOU MOUNTING HEIGHTS (TO BOTTOM OF MONITOR) ARE AS FOLLOWS:
 - SANDWICH STATION - 68" A.F.F.
 - DRIVE THRU - 61" A.F.F.
- DIGITAL MENUBOARD PREP WIRING:
 - PROVIDE BOX, QUAD DATA OUTLET, CAT5 CABLE, TERMINATIONS, PLATE AND 1" DIA. CONDUIT FROM FROM (2) QUAD DATA OUTLETS IN MENUBOARD SOFFIT TO (2) QUAD DATA OUTLETS IN OFFICE WALL.

POS-COMMUNICATIONS NOTES

EQUIPMENT NOTES:

- VOU HEIGHT TO BE COORDINATED WITH EQUIPMENT AND SIGNAGE (SEE ELEVATIONS). G.C. IS TO PROVIDE SOLID IN-WALL BLOCKING FOR THE VOU AS REQUIRED.
- ONLY REQUIRED EQUIPMENT IS VISUALLY REPRESENTED AND TAGGED IS SHOWN ON THIS FLOOR PLAN. OPTIONAL EQUIPMENT IS TAGGED BUT NOT SHOWN GRAPHICALLY.

HIGH SPEED SYSTEM NOTES:

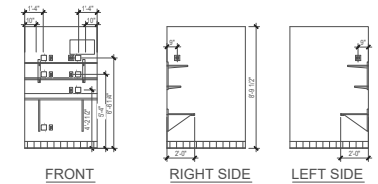
- BEFORE HIGH SPEED CAN BE INSTALLED AT THE SITE, THE FOLLOWING ITEMS MUST BE IN PLACE PRIOR TO THE INSTALLATION. THESE ELEMENTS NEED TO BE IN PLACE 6-7 WEEKS BEFORE THE STORE OPENING TO ENSURE HIGH SPEED CONNECTIVITY.
- SINGLE, 2" DEDICATED CONDUIT FROM BUILDING TO CURB, W/ 3-4 PULL STRINGS.
 - FRAMED OFFICE IN A BUILDING THAT HAS A ROOF, CEMENT FLOORS AND EXTERIOR WALLS. ENSURE RECEPTACLE IN PLACE AND POWERED FOR ROUTER CONNECTION.
 - GROUNDING ELECTRICAL (QUAD OUTLET) - THE FOLLOWING IS A LIST OF ACCEPTABLE GROUNDS IN ORDER OF PREFERENCE:
 - BUILDING SERVICE GROUND (MAIN GROUND ELECTRODE SYSTEM)
 - MAIN ELECTRICAL BOX
 - BUILDING STEEL
 - WATER PIPE (AN ACCEPTABLE WATER PIPE IS A METAL UNDERGROUND WATER PIPE IN DIRECT CONTACT WITH THE EARTH FOR 10 FEET OR MORE AND ELECTRICALLY CONTINUOUS TO THE POINT WHERE THE PROTECTOR GROUND IS INSTALLED)

MARCH SURVEILLANCE SYSTEM NOTES:

- DEDICATED RECEPTACLE REQUIRED, 24" A.F.F.
- CLEAR WALL SPACE REQUIRED = 24" X 24" TO HANG DMR. REFER TO MANUFACTURER'S SPECIFICATION SHEET. UNIT IS DOCKED IN A LOCKABLE BRACKET WHICH ALLOWS UNIT TO SLIDE OUT.
- A DEDICATED PORT (#2) ON MNS ROUTER IS ASSIGNED TO MARCH SYSTEMS.
- DUNKIN BRANDS REQUIRES A MINIMUM OF ONE (1) CAMERA PER REGISTER TO BE CONSIDERED AS A COMPLIANT INSTALLATION.

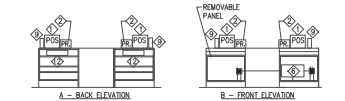
POS LEGEND

- I.G. 120 V QUAD/EXT OUTLET W/ISOLATED GROUND
- I.G. 120 V DUPLEX OUTLET W/ISOLATED GROUND
- TELEPHONE OUTLET, RJ45, BOX
- DATA OUTLET, RJ45
- QUAD DATA OUTLET, RJ45
- POS POINT OF SALES TERMINAL (REQUIRED)
- POS POINT OF SALES TERMINAL (FUTURE/OPTIONAL)
- VOU VIDEO DISPLAY UNIT (REQUIRED)
- VOU VIDEO DISPLAY UNIT (FUTURE/OPTIONAL)
- DTDR DRIVE THROUGH REMOTE DISPLAY (REQUIRED)
- DTDR DRIVE THROUGH CONSOLE (REQUIRED)
- R MNS ROUTER
- SW SWITCH
- FAX FAX PRINTER
- M MODEM
- UPS UPS
- SC SITE CONTROL (SELF-MONITORING) - RADIANT ONLY
- RP RECEIPT PRINTER
- PREP PRINTER
- B.O.H. PC BACK-OFF-HOUSE PC



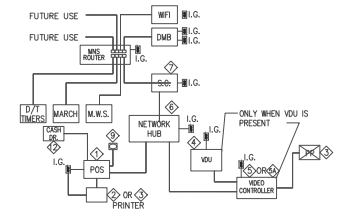
2 OFFICE SCHEMATIC DETAIL

SCALE: 1/4" = 1'-0"



3 FRONT LINE POS COUNTER DETAIL

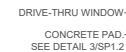
SCALE: 1/4" = 1'-0"



4 RETAIL TECHNOLOGY DETAIL

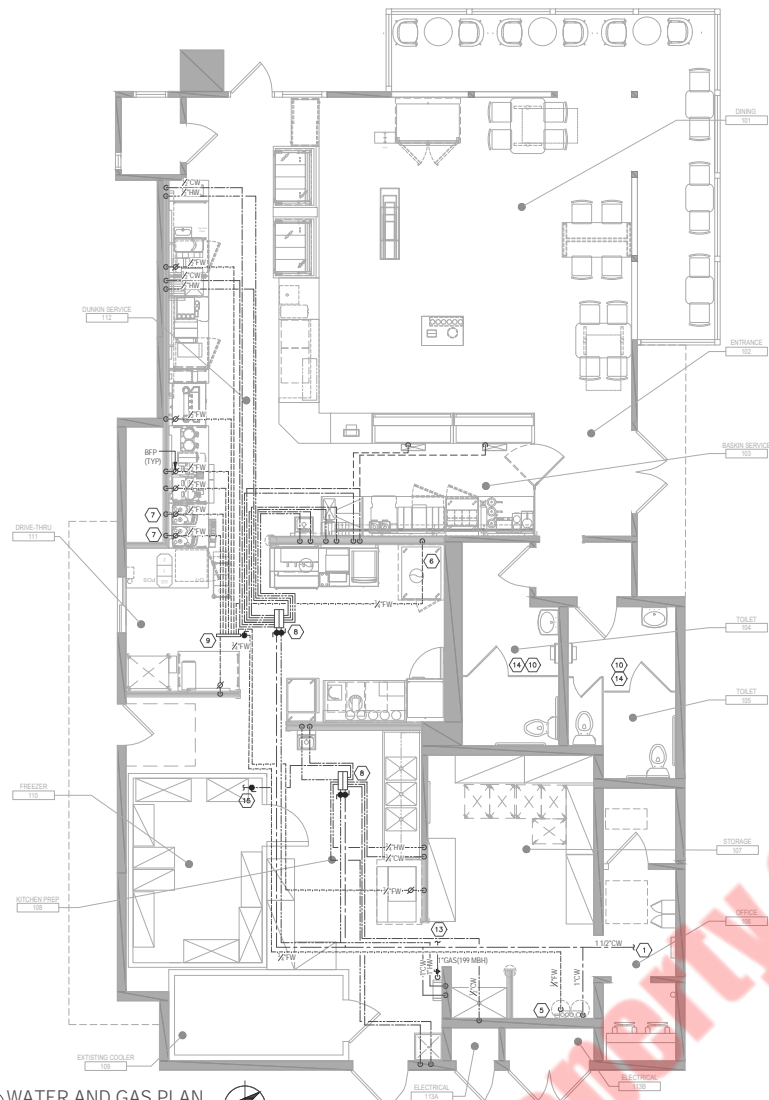
SCALE: 1/4" = 1'-0"

SUNSET AVENUE

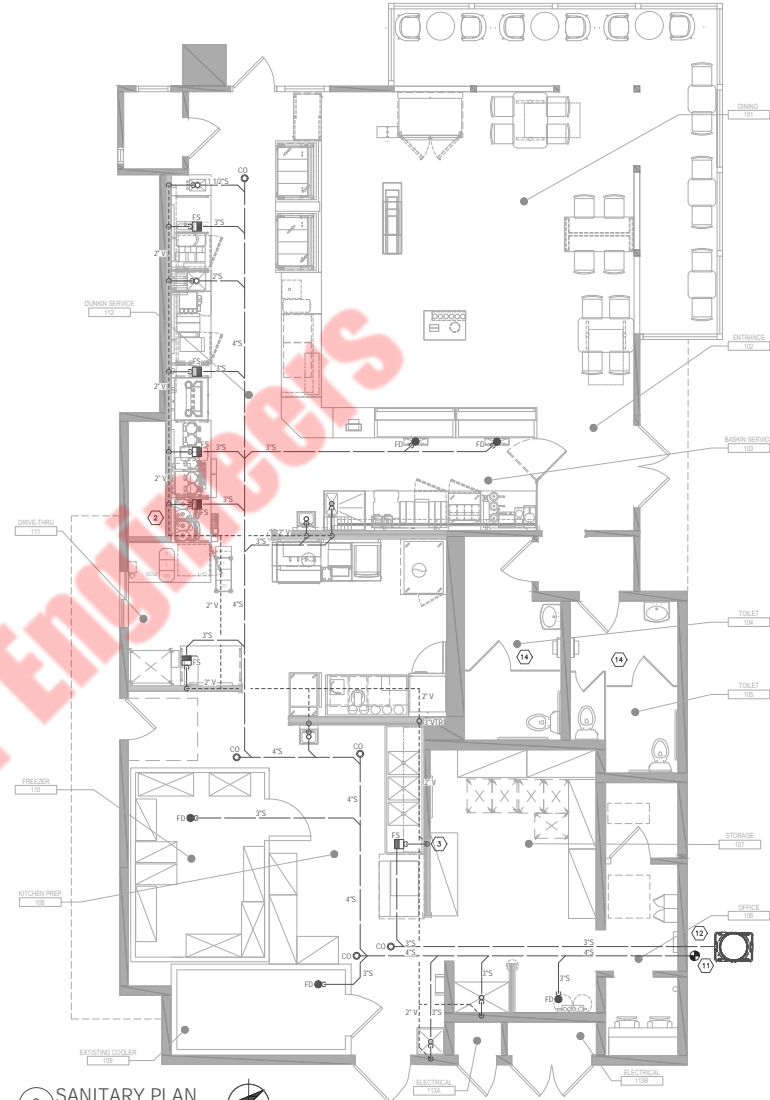


1. ALL UNDERGROUND CONDUIT SHALL BE PVC. PROVIDE GALVANIZED STEEL SLEEVE WHEN PASSING THROUGH THE FOUNDATION WALL. CONCRETE FLOOR. EXTEND CONDUIT 6" ABOVE THE FINISHED FLOOR AND PROVIDED WITH PROTECTIVE GROMMET.
2. ALL CONDUIT SHALL BURIED AT LEAST 18" BELOW FINISHED GRADE.
3. ALL INSTALLED CONDUIT SHALL BE PROVIDED WITH A PULL STRING.
4. LOOP PLACEMENT IS DEFINED IN TERMS OF WHERE THE VEHICLE ENGINE BLOCK WOULD BE OVER THE LOOP IF THE CENTER OF THE DRIVER'S SIDE WINDOW IS AT THE SERVICE POINT. THE GOAL IS TO ENSURE THERE IS ONLY ROOM FOR ONE VEHICLE BEHIND THE PREVIOUS LOOP AND THE MERGE POINT; THIS IS HOW SEQUENCING IS POSSIBLE.
5. REFER TO CIVIL DRAWINGS FOR FURTHER INFORMATION AND PROPER LOCATION OF SITE LIGHTING, PYLON SIGNS, DIRECTIONAL SIGNS AND MENU SYSTEM SIGNS.
6. ALL LOOP CONDUITS SHALL ROUTE BACK TO DRIVE THRU TIMER MONITOR ADJACENT TO DRIVE THRU WINDOW.
7. MENU BOARD LOW VOLTAGE DATA ROUTES BACK TO THE OFFICE.

Power	POWER CONDUIT - UNDERGROUND CONDUIT DESIGNATED FOR POWER WIRING 120 VOLTS. CONDUIT SIZE SHALL BE A MINIMUM OF ____ UNLESS OTHERWISE INDICATED.
Data	DATA CONDUIT - UNDERGROUND CONDUIT DESIGNATED FOR LOW VOLTAGE DATA COMMUNICATION WIRING. CONDUIT SIZE SHALL BE A MINIMUM OF ____ UNLESS OTHERWISE INDICATED.
Voice	VOICE CONDUIT - UNDERGROUND CONDUIT DESIGNATED FOR LOW VOLTAGE VOICE DATA COMMUNICATION WIRING. CONDUIT SIZE SHALL BE A MINIMUM OF ____ UNLESS OTHERWISE INDICATED.
Spare	SPARE CONDUIT - UNDERGROUND CONDUIT INSTALL AS A SPARE OR FOR FUTURE USE. MAY BE USED FOR POWER OR DATA, BUT NOT BOTH. CONDUIT SIZE SHALL BE A MINIMUM OF ____ UNLESS OTHERWISE INDICATED.
Loop	LOOP CONDUIT - UNDERGROUND CONDUIT DESIGNATED FOR LOW VOLTAGE VEHICLE DETECTION LOOP COMMUNICATION WIRING. CONDUIT SIZE SHALL BE A MINIMUM OF ____ UNLESS OTHERWISE INDICATED.
Power	POWER CONDUIT - UNDERGROUND CONDUIT DESIGNATED FOR ALL MISCELLANEOUS POWER FEEDERS AND BRANCH CIRCUITS. 120 VOLTAGE UNDERGROUND CONDUIT SHALL BE AS INDICATED.
Lighting	POLY MOUNTED SITE LIGHTING - DOUBLE HEAD LED LIGHTING FIXTURE. SEE CIVIL ENGINEERS DRAWING FOR TYPE, VOLTAGE AND WATTAGE.
Lighting	POLY MOUNTED SITE LIGHTING - SINGLE HEAD LED LIGHTING FIXTURE. SEE CIVIL ENGINEERS DRAWING FOR TYPE, VOLTAGE AND WATTAGE.



1 WATER AND GAS PLAN
SCALE: 1/4" = 1'-0"



2 SANITARY PLAN
SCALE: 1/4" = 1'-0"

GENERAL NOTES

- ALL WORK SHALL COMPLY WITH ALL LOCAL AND STATE CODES AND AUTHORITIES HAVING JURISDICTION.
- THE CONTRACTOR SHALL SECURE AND PAY FOR ALL REQUIRED PERMITS AND ARRANGE ALL REQUIRED INSPECTIONS.
- THE CONTRACTOR SHALL COORDINATE HIS WORK WITH OTHER CONTRACTORS AND TRADES.
- THESE DRAWINGS, AS PREPARED, ARE DIAGRAMMATIC BUT SHALL BE FOLLOWED AS CLOSELY AS CONSTRUCTION OF THE PROJECT AND THE WORK OF THE TRADES WILL PERMIT. EQUIPMENT LOCATIONS INDICATED ARE APPROXIMATE. COORDINATE EXACT LOCATIONS AND REQUIRED CLEARANCES WITH EQUIPMENT SUPPLIER AND ALL TRADES PRIOR TO INSTALLATION.
- THE CONTRACTOR SHALL FURNISH AND INSTALL ALL THE EQUIPMENT INDICATED WITHIN THESE DRAWINGS UNLESS OTHERWISE NOTED. VERIFY LOCATION AND DIMENSIONS IN THE FIELD PRIOR TO FABRICATION AND / OR INSTALLATION.
- ALL ROOF PENETRATIONS SHALL BE AT THE CONTRACTOR'S EXPENSE. COORDINATE WITH OWNER'S ROOFING CONTRACTOR SO AS NOT TO VOID ANY EXISTING ROOF WARRANTIES.
- THE ENTIRE INSTALLATION SHALL BE GUARANTEED FREE OF DEFECTS AND CONTRACTOR SHALL REPAIR AND / OR REPLACE ANY DEFECTIVE MATERIALS OR EQUIPMENT AT NO COST TO THE OWNER FOR A MINIMUM PERIOD OF ONE YEAR FROM THE DATE OF ACCEPTANCE BY ARCHITECT OR ENGINEER.
- ALL WORK SHALL BE SUBJECT TO THE ACCEPTANCE AND APPROVAL OF THE ARCHITECT AND OWNER. THE ARCHITECT SHALL BE NOTIFIED OF ANY AND ALL DISCREPANCIES BETWEEN FIELD CONDITIONS AND THE CONTRACT DOCUMENTS BEFORE PROCEEDING WITH THAT PORTION OF THE WORK. FAILURE OF PROPER NOTIFICATION DOES NOT RELIEVE THE CONTRACTOR. THE CONTRACTOR SHALL CORRECT ANY AND ALL WORK ARISING FROM SUCH FAILURE TO COORDINATE DISCREPANCIES TO THE SATISFACTION OF THE ARCHITECT WITHOUT ADDITIONAL COST TO THE OWNER.
- ALL KITCHEN, PREP AREA AND SALES AREA EQUIPMENT WILL BE FURNISHED AND INSTALLED. EQUIPMENT WILL BE FURNISHED WITH TRIM, FAUCETS, ESCUTCHEONS, ETC. PLUMBING CONTRACTOR SHALL PROVIDE ALL ROUGH-IN TRAPS AND MAKE ALL FINAL CONNECTIONS (SEE EQUIPMENT SCHEDULE).
- ALL PIPING TO BE CONCEALED IN HUNG CEILINGS, CHASES AND FURRED SPACES.
- REFER TO EQUIPMENT SCHEDULE AND EQUIPMENT SPECIFICATIONS FOR EXACT LOCATIONS OF PLUMBING CONNECTIONS.
- THE CONTRACTOR SHALL VERIFY DEPTH, SIZE, LOCATION OF ALL EXISTING UTILITIES IN FIELD PRIOR TO STARTING WORK.
- THE CONTRACTOR SHALL PROVIDE AND INSTALL ALL PIPE HANGERS, AND SUPPORTS IN ACCORDANCE WITH THE LOCAL APPLICABLE CODES.
- THE CONTRACTOR TO PROVIDE TRAP PRIMERS, DEEP SEAL TRAP OR TRAP SEAL ON ALL FLOOR DRAINS AS PER APPLICABLE CODE.

GENERAL NOTES

- ALL PENETRATIONS REQUIRED FOR PLUMBING EQUIPMENT AND PIPING THROUGH ANY WALL SHALL BE PROPERLY SEALED OFF TO MAINTAIN THE INTEGRITY OF THE STRUCTURE.
- ALL SHUT OFF AND ISOLATION VALVES SHALL BE BALL TYPE. ALL VALVES SERVING TOILETS AND SINKS SHALL BE ANGLE STOP TYPE.
- PROVIDE AN INDIVIDUAL BALL VALVE AND BACK CHECK VALVE TO EACH INDIVIDUAL PIECE OF EQUIPMENT.
- PROVIDE ASSE 1022 BACKFLOW PREVENTER FOR COFFEE MACHINES 124G, 124A, 124E, 116, 200A, 107A, 257 & ESPRESSO MACHINES 96.4.
- PROVIDE AERATORS ON ALL HAND SINKS AND LAVATORIES THROUGHOUT THE FACILITY.
- PROVIDE KAY CHEMICAL DISPENSER (SEE NATIONAL ACCOUNTS) AT MOP SINK AND THREE COMP SINK. MOUNT BOTTLE AND DISPENSER ABOVE SINK AS REQUIRED BY CHEMICAL SUPPLIER.
- PROVIDE HEAT TRAPS ON THE SUPPLY AND DISCHARGE PIPING ASSOCIATED WITH THE EQUIPMENT FOR NON CIRCULATING HOT WATER SYSTEMS AS PER SECTION 504.4 OF 2009 IBC.

PLAN NOTES

- CONNECT TO EXISTING WATER LINE. CONTRACTOR TO VERIFY SIZE AND LOCATION IN FIELD. PROVIDE BACKFLOW PREVENTER PER REQUIREMENTS OF LOCAL JURISDICTION.
- PIPE INDIRECT DRAIN FROM TROUGH OR COUNTER AT COFFEE STATIONS TO FLOOR SINK. PROVIDE AIR GAP AS REQUIRED BY CODE.
- PROVIDE INDIRECT DRAIN FROM ICE CUBER AND ICE BIN TO ADJACENT FLOOR SINK. CONSULT ICE MACHINE INSTRUCTION MANUAL FOR INDIRECT PIPING REQUIREMENTS.
- PROVIDE THERMOSTATIC MIXING VALVE AT ALL HAND SINKS AND LAVATORIES IF NOT ALREADY PROVIDED WITH THEM SET AT 110°F MAXIMUM.
- WATER FILTRATION SYSTEM. MOUNT TOP OF SYSTEM 48" AFF. VERIFY ACTUAL LOCATION.
- PROVIDE A PRESSURE REDUCING VALVE, PRESSURE GAUGE, AND SHUT-OFF VALVE AT PLUMBING CONNECTIONS TO OVEN.
- PROVIDE A PRESSURE REDUCING VALVE FOR ESPRESSO MACHINE.
- PROVIDE VALVED MANFOLD. TAG LINE AS TO FIXTURE SERVED.
- PROVIDE VALVELESS MULTI-PORT TEE. TAG LINE AS TO FIXTURE SERVED.
- ALL BATHROOM FAUCETS TO BE PROVIDED WITH SENSOR.
- CONNECT TO EXISTING SANITARY LINE. CONTRACTOR TO VERIFY SIZE AND LOCATION IN FIELD.
- CONNECT TO EXISTING GREASE TRAP LOCATED IN PARKING LOT. CONTRACTOR TO VERIFY SIZE AND LOCATION IN FIELD.
- CONNECT TO EXISTING GAS LINE. CONTRACTOR TO VERIFY SIZE AND LOCATION IN FIELD. PROVIDE PRV IF GAS PRESSURE EXCEEDS MAXIMUM REQUIRED GAS PRESSURE.
- EXISTING WATER AND SANITARY SERVICES IN TOILET AREA REMAINS SAME.
- DOMESTIC WATER SERVICE CONNECTION TO WALK-IN BOX.

