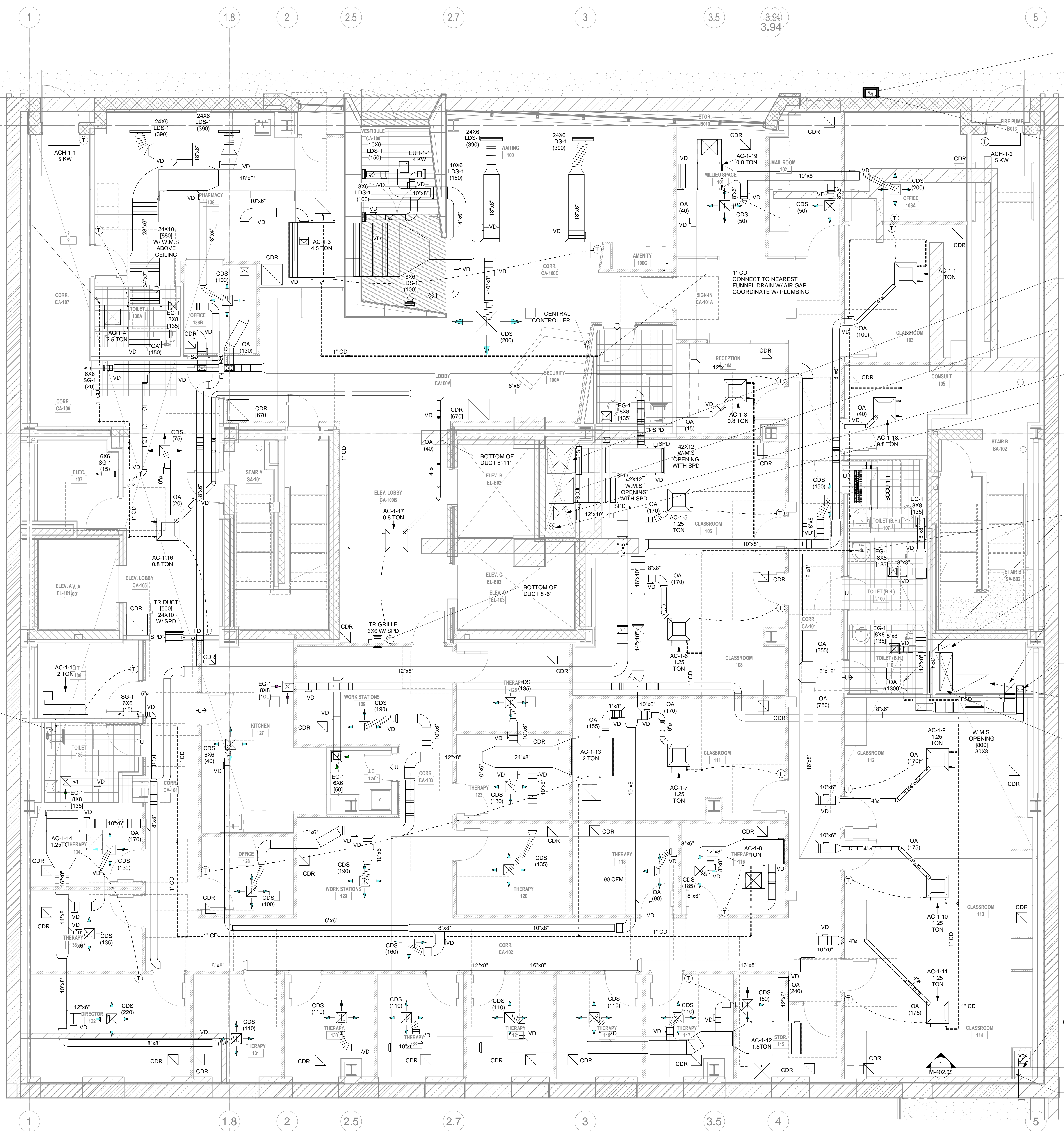


F
E
D
C
B
A



PROVIDE HINGED METAL COVER WITH LOCKING DEVICE FOR FUEL FILL BOX

2" DIA FUEL FILL PIPING AND TANK VENT FROM BELOW

30X28 (1320) FOR NORMAL OPERATION (8200) FOR SMOKE PURGE UP & DN

30X28 (865) FOR NORMAL OPERATION (10230) FOR SMOKE PURGE UP & DN

16X14 (1415) UP & DN

REF 1 UP & DN

1" CD CONNECT TO NEAREST FUNNEL DRAIN W/ AIR GAP COORDINATE W/ PLUMBING

8X8 (125) UP

12X8 (405) UP

8X8 (100) UP

38X20 (800) UP

44X14 (1300) UP

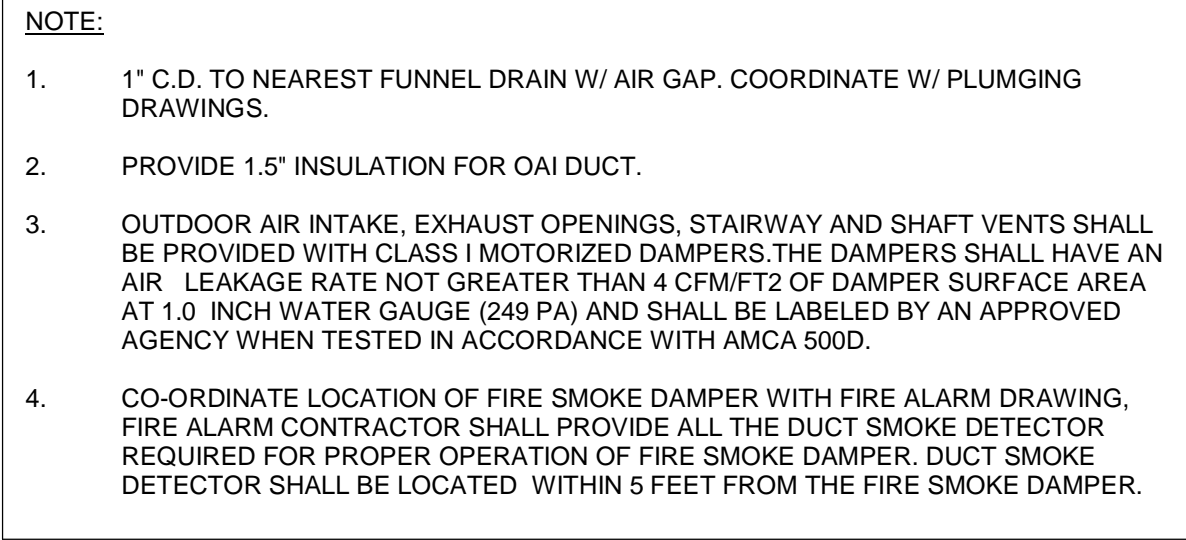
NOTE:

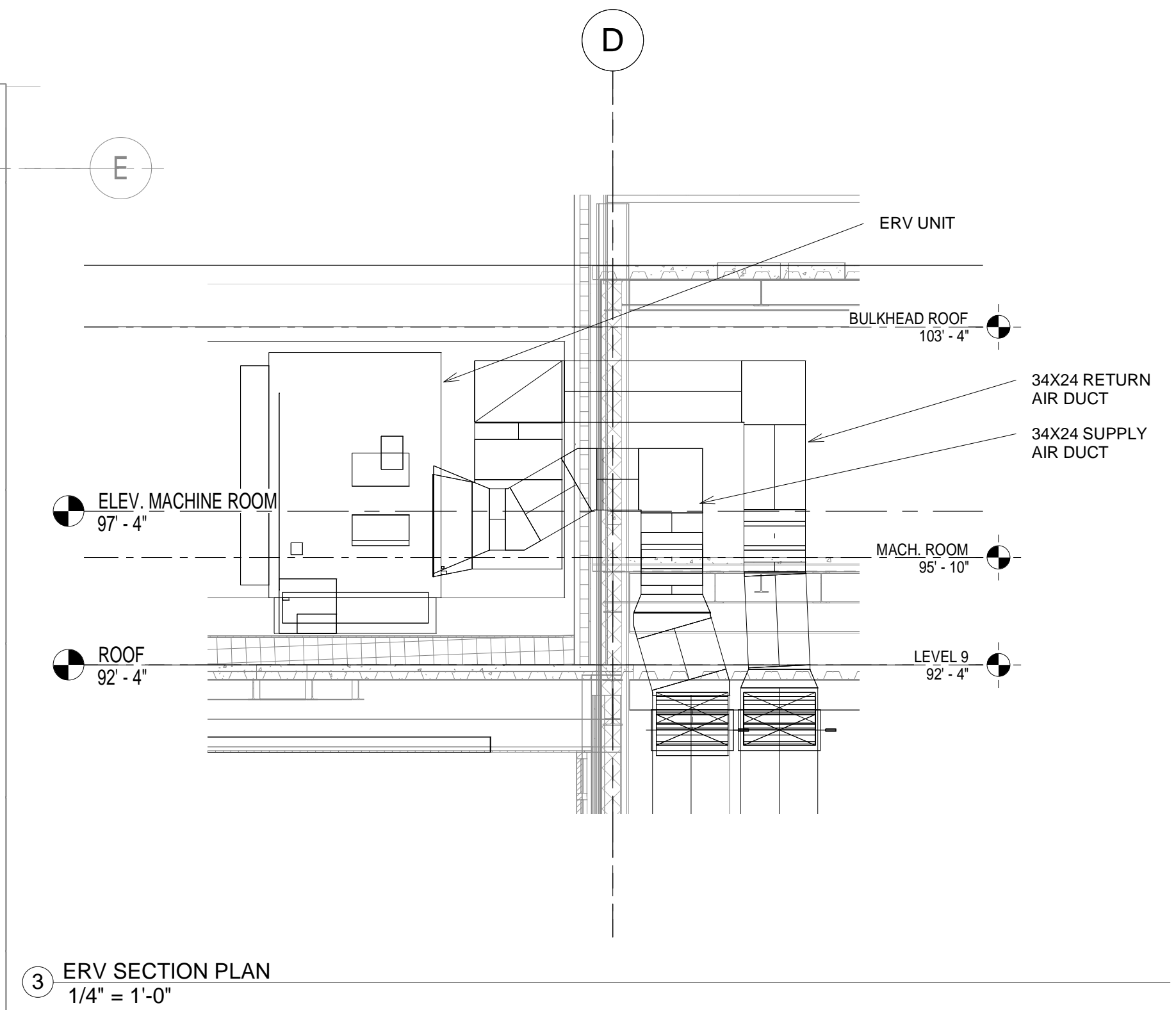
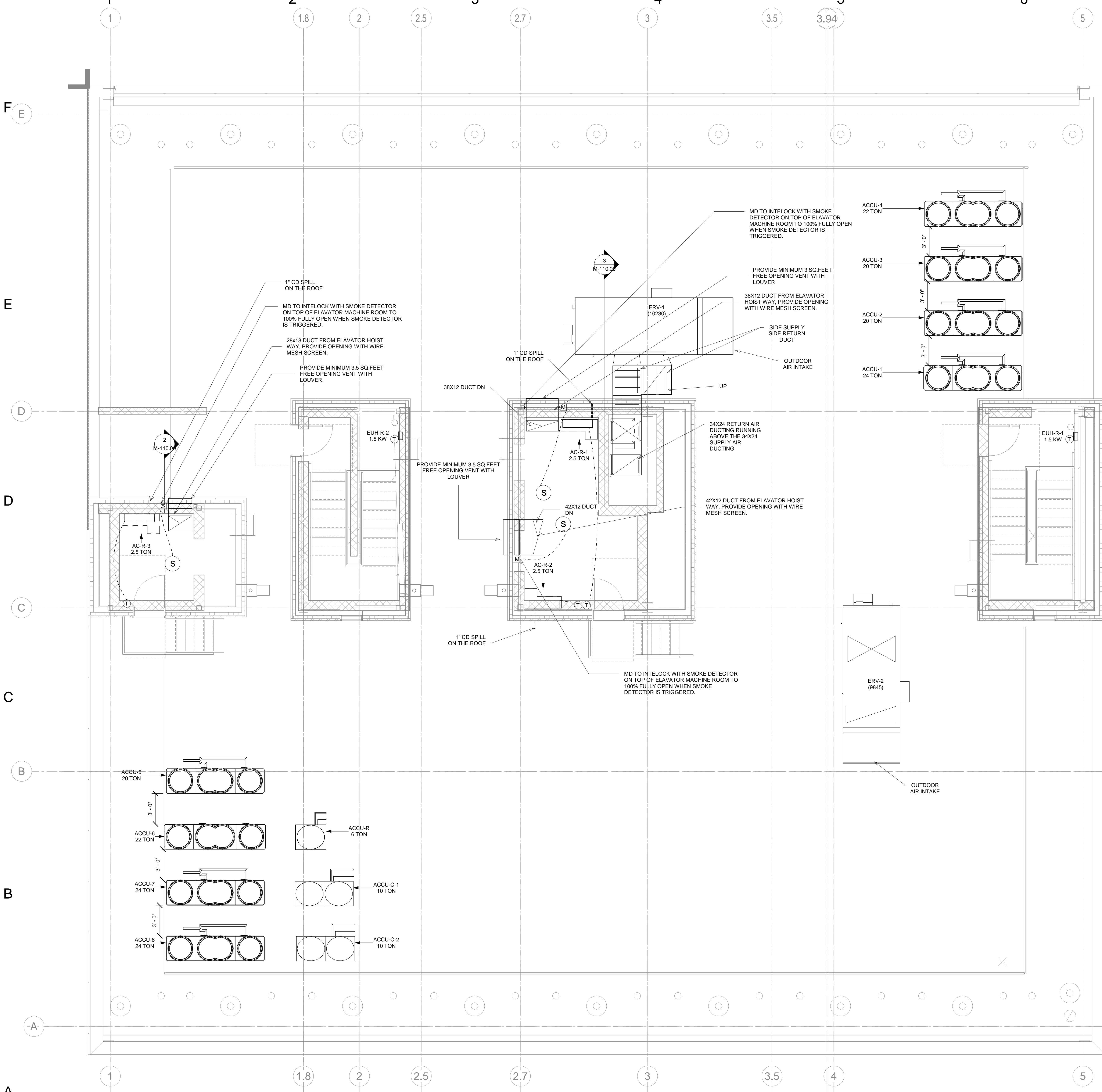
- 1" C.D. TO NEAREST FUNNEL DRAIN W/ AIR GAP. COORDINATE W/ PLUMBING DRAWINGS.
- PROVIDE 1.5" INSULATION FOR OAI DUCT.
- OUTDOOR AIR INTAKE, EXHAUST OPENINGS, STAIRWAY AND SHAFT VENTS SHALL BE PROVIDED WITH CLASS I MOTORIZED DAMPERS. THE DAMPERS SHALL HAVE AN AIR LEAKAGE RATE NOT GREATER THAN 4 CFM/F² OF DAMPER SURFACE AREA AT 1.0 INCH WATER GAUGE (249 PA) AND SHALL BE LABELED BY AN APPROVED AGENCY WHEN TESTED IN ACCORDANCE WITH AMCA 500D.
- CO-ORDINATE LOCATION OF FIRE SMOKE DAMPER WITH FIRE ALARM DRAWING. FIRE ALARM CONTRACTOR SHALL PROVIDE ALL THE DUCT SMOKE DETECTOR REQUIRED FOR PROPER OPERATION OF FIRE SMOKE DAMPER. DUCT SMOKE DETECTOR SHALL BE LOCATED WITHIN 5 FEET FROM THE FIRE SMOKE DAMPER.

10" ROUND DUCT UP & DN TERMINATE 10' FROM OPERABLE OPENINGS INTO BUILDING WITH RAIN CAP

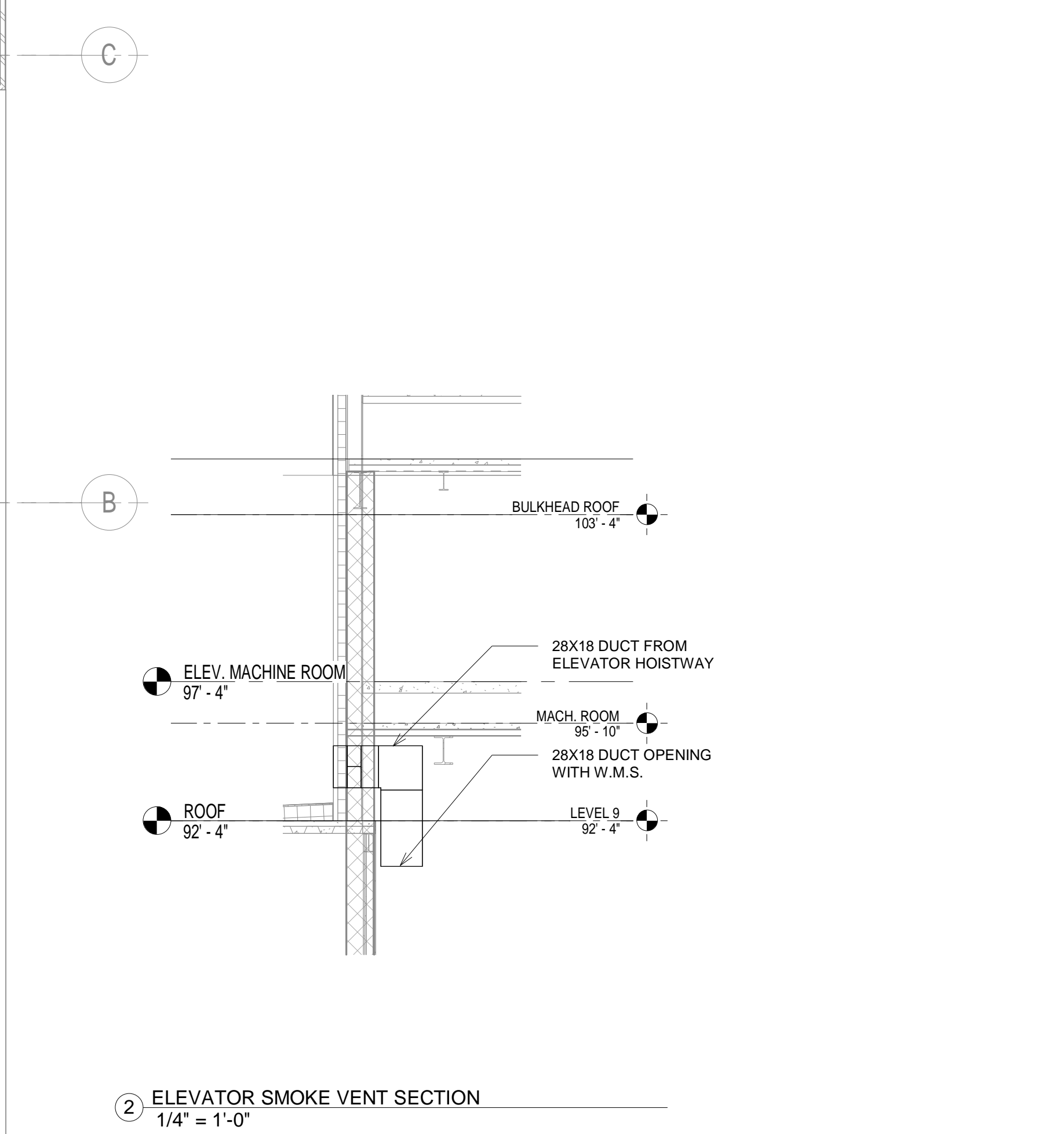
PROVIDE FIRE RATED SHAFT

1 FIRST FLOOR MECHANICAL PLAN
1/4" = 1'-0"





- NOTE:**
1. PROVIDE 1.5" INSULATION FOR OAI DUCT.
 2. OUTDOOR AIR INTAKE, EXHAUST OPENINGS, STAIRWAY AND SHAFT VENTS SHALL BE PROVIDED WITH CLASS I MOTORIZED DAMPERS. THE DAMPERS SHALL HAVE AN AIR LEAKAGE RATE NOT GREATER THAN 4 CFM/FT² OF DAMPER SURFACE AREA AT 1.0 INCH WATER GAUGE (249 PA) AND SHALL BE LABELED BY AN APPROVED AGENCY WHEN TESTED IN ACCORDANCE WITH AMCA 500D.
 3. CO-ORDINATE LOCATION OF FIRE SMOKE DAMPER WITH FIRE ALARM DRAWING. FIRE ALARM CONTRACTOR SHALL PROVIDE ALL THE DUCT SMOKE DETECTOR REQUIRED FOR PROPER OPERATION OF FIRE SMOKE DAMPER. DUCT SMOKE DETECTOR SHALL BE LOCATED WITHIN 5 FEET FROM THE FIRE SMOKE DAMPER.
 4. PROVIDE WEATHER PROOF COATING FOR ALL EXTERIOR DUCTWORK AND PIPING.



① MECHANICAL ROOF PLAN
1/4" = 1'-0"