

1 UNDERGROUND PLUMBING PLAN
1/4" = 1'-0"

GENERAL NOTES:

- COORDINATE ALL UNDERGROUND PIPING WITH MAT FOUNDATION.
- REFER APPROVED SITE CONNECTION DRAWING FOR SEWER LOCATION AND ELEVATION.
- ALL PIPES ARE PITCHED WITH 1% SLOPE (1/8" PER FOOT).
- ALL INVERT ELEVATIONS (I.E.) ARE TAKEN WITH REFERENCE TO ARCHITECTURAL LEVEL 1 (E.L. 0'-0") AND REPRESENTS ELEVATION OF BOTTOM OF PIPE.
- DATUM ELEVATION FOR BUILDING SEWER EXIT POINT IS WITH REFERENCE TO NAVD88.
- PROVIDE BACKWATER VALVE TO COMBINED SEWER EXITING THE BUILDING IN HOUSE TRAP PIT.

NYC DOH NOTES:

- ALL ELEVATORS IN BUILDING ARE ELECTRICAL ELEVATORS.
- MEDICAL WASTE WILL NOT BE DISCHARGED TO SEWERS BUT WILL BE DISPOSED ACCORDING TO NYS DOH REQUIREMENTS.

F

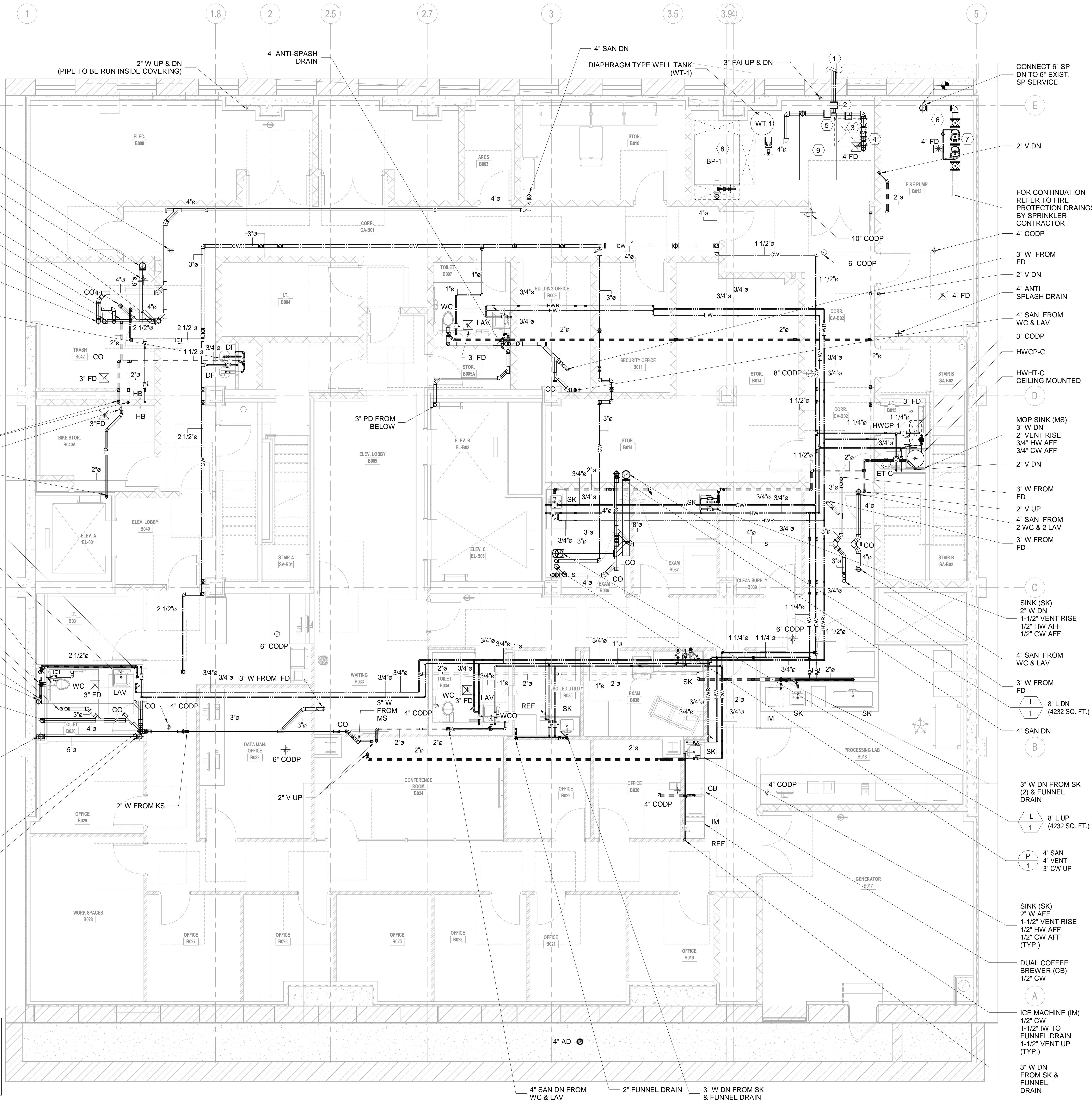
E

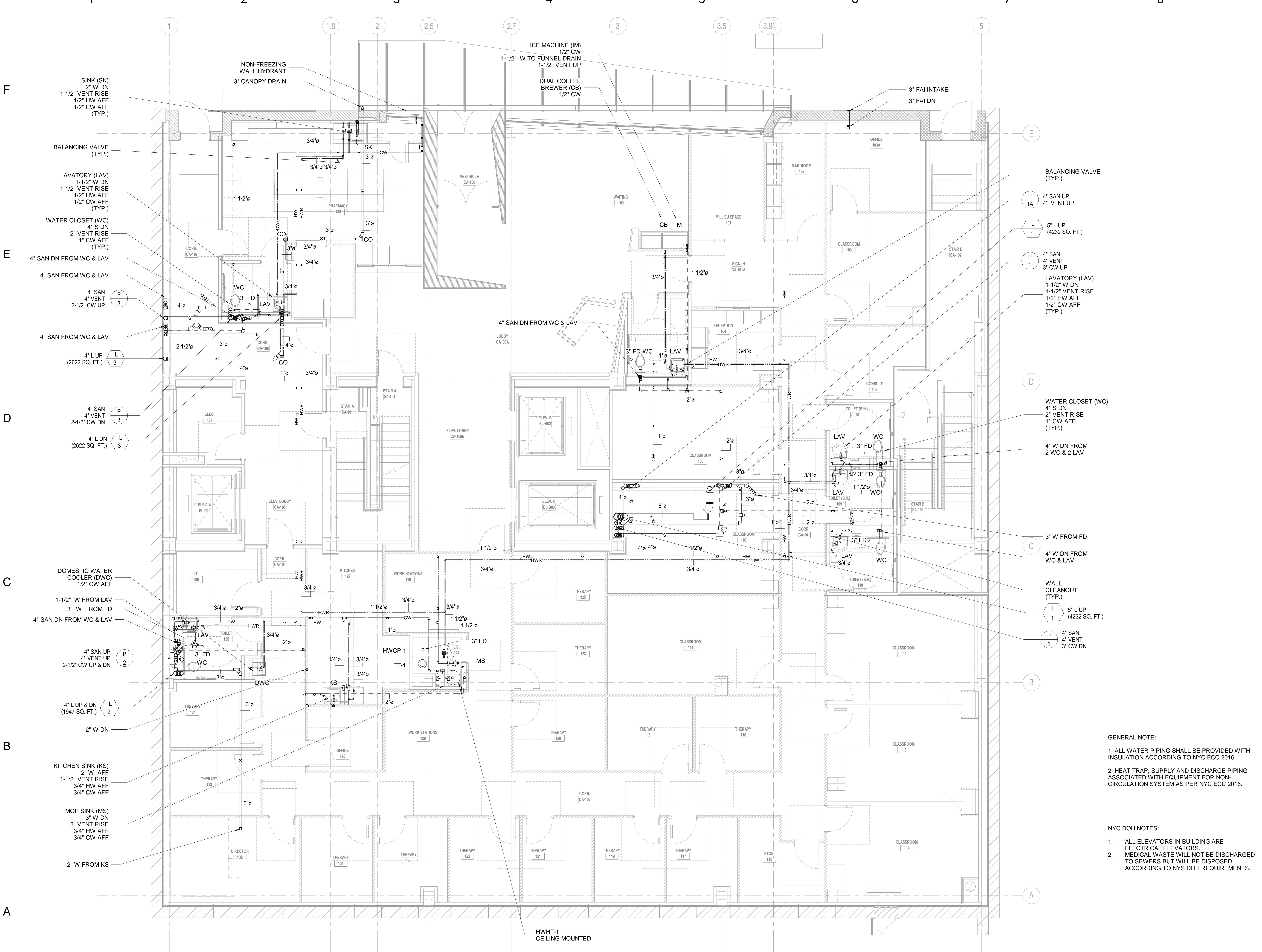
D

C

B

A



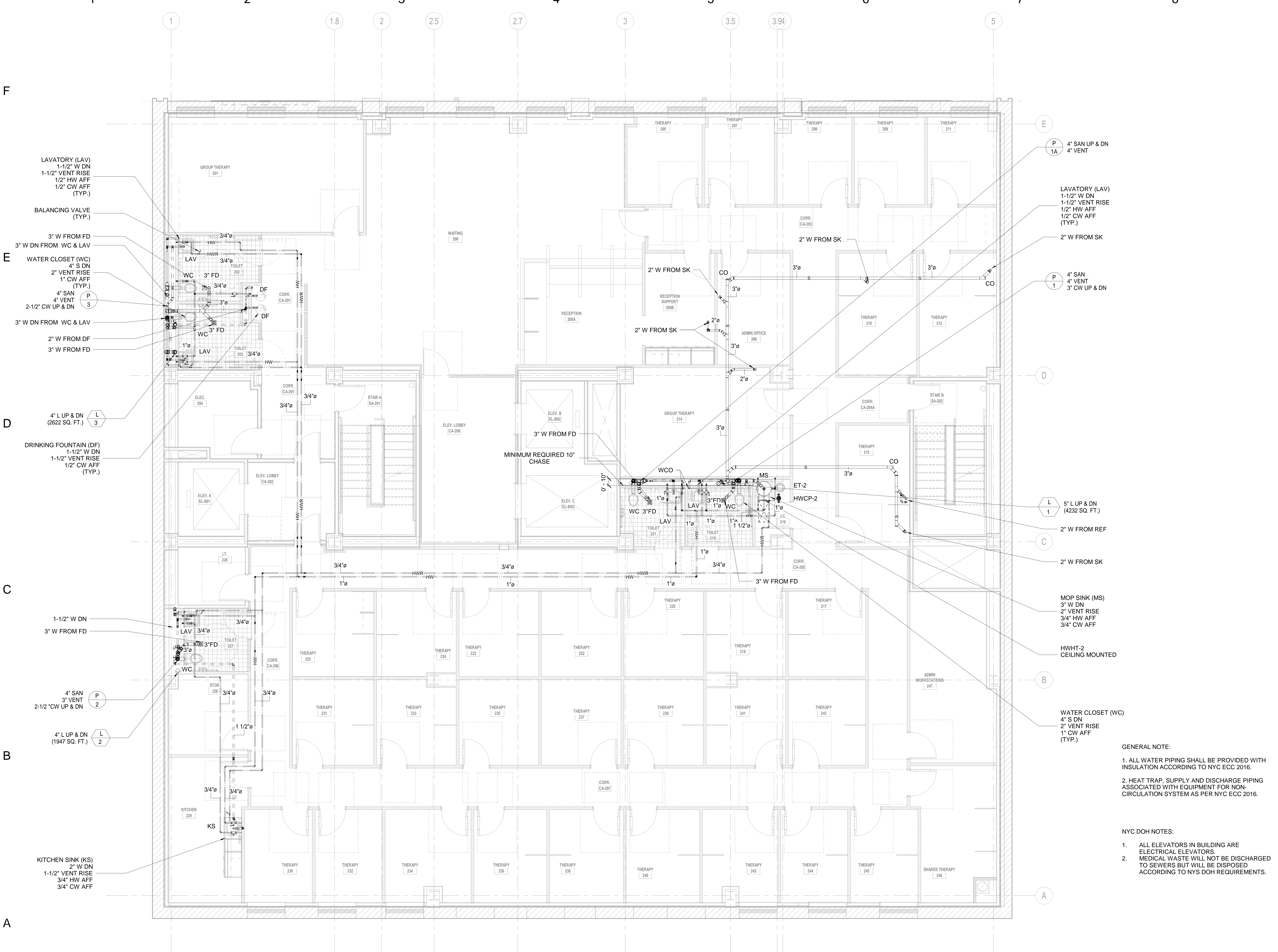


GENERAL NOTE:

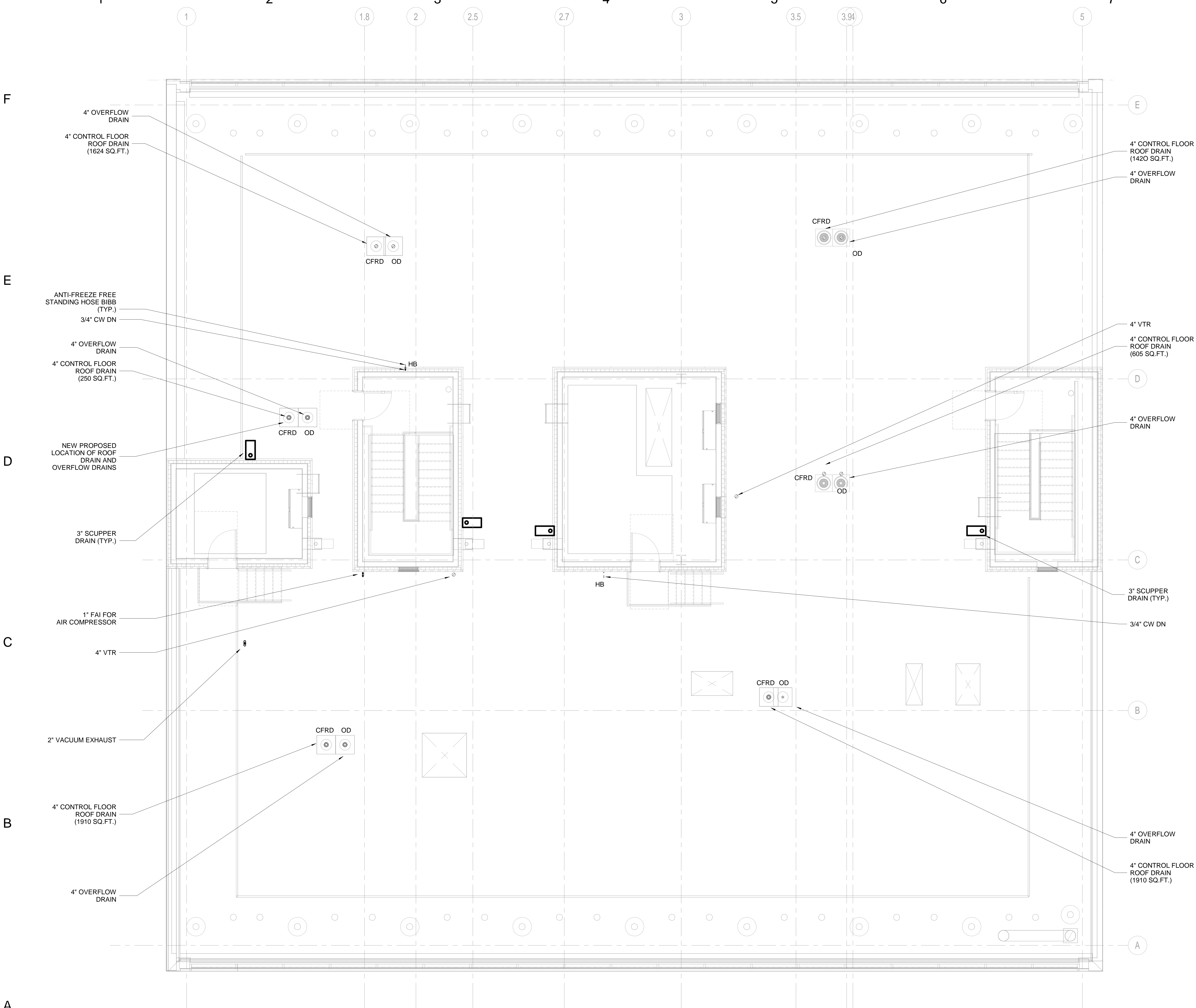
1. ALL WATER PIPING SHALL BE PROVIDED WITH INSULATION ACCORDING TO NYC ECC 2016.
2. HEAT TRAP, SUPPLY AND DISCHARGE PIPING ASSOCIATED WITH EQUIPMENT FOR NON-CIRCULATION SYSTEM AS PER NYC ECC 2016.

NYC DOH NOTES:

1. ALL ELEVATORS IN BUILDING ARE ELECTRICAL ELEVATORS.
2. MEDICAL WASTE WILL NOT BE DISCHARGED TO SEWERS BUT WILL BE DISPOSED ACCORDING TO NYS DOH REQUIREMENTS.



1 SECOND FLOOR PLUMBING PLAN
1/4" = 1'-0"



PLUMBING GENERAL NOTES:

1. THE COMPRESSOR AIR INTAKE LOCATED OUTDOORS ABOVE ROOF LEVEL, AT A MINIMUM DISTANCE OF 10 FT FROM ANY DOOR, WINDOW, EXHAUST, OTHER INTAKE, OR OPENING IN THE BUILDING AND A MINIMUM DISTANCE OF 20 FT ABOVE THE GROUND.
2. THE VACUUM EXHAUST LOCATED OUTDOORS ABOVE ROOF LEVEL, AT A MINIMUM DISTANCE OF 10 FT FROM ANY DOOR, WINDOW, AIR INTAKE OR OPENING IN THE BUILDING.
3. THE END OF THE COMPRESSOR AIR INTAKE AND VACUUM EXHAUST SHALL BE TURNED DOWN AND SCREENED OR OTHERWISE BE PROTECTED AGAINST THE ENTRY OF VERMIN, DEBRIS, OR PRECIPITATION BY SCREENING, FABRICATED OR COMPOSED OF A NONCORRODING MATERIAL.
4. ALL WATER PIPING SHOULD BE PROVIDED WITH INSULATION ACCORDING TO NYC ECC 2016.
5. ALL ELEVATORS IN BUILDING ARE ELECTRICAL ELEVATORS.