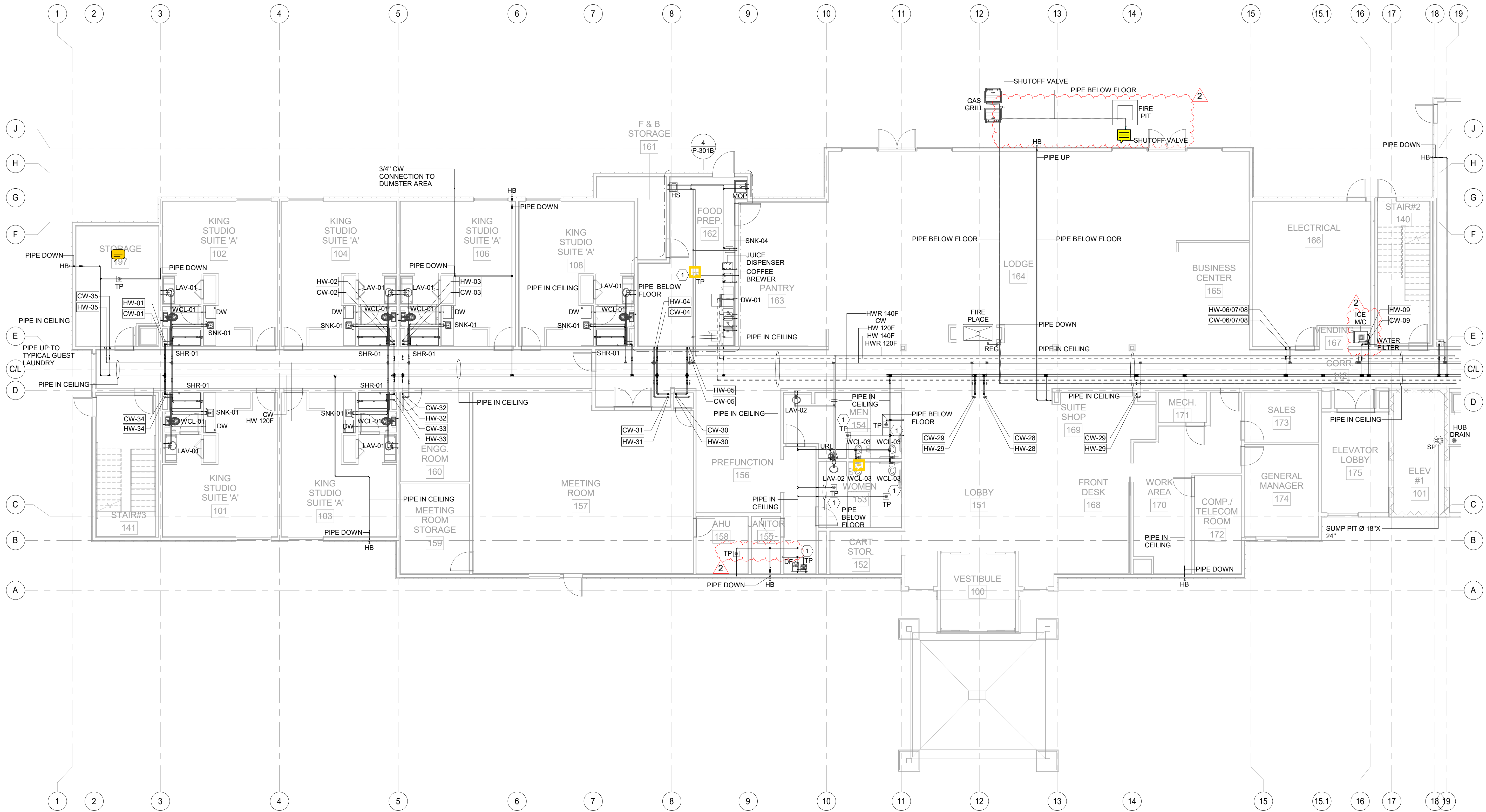
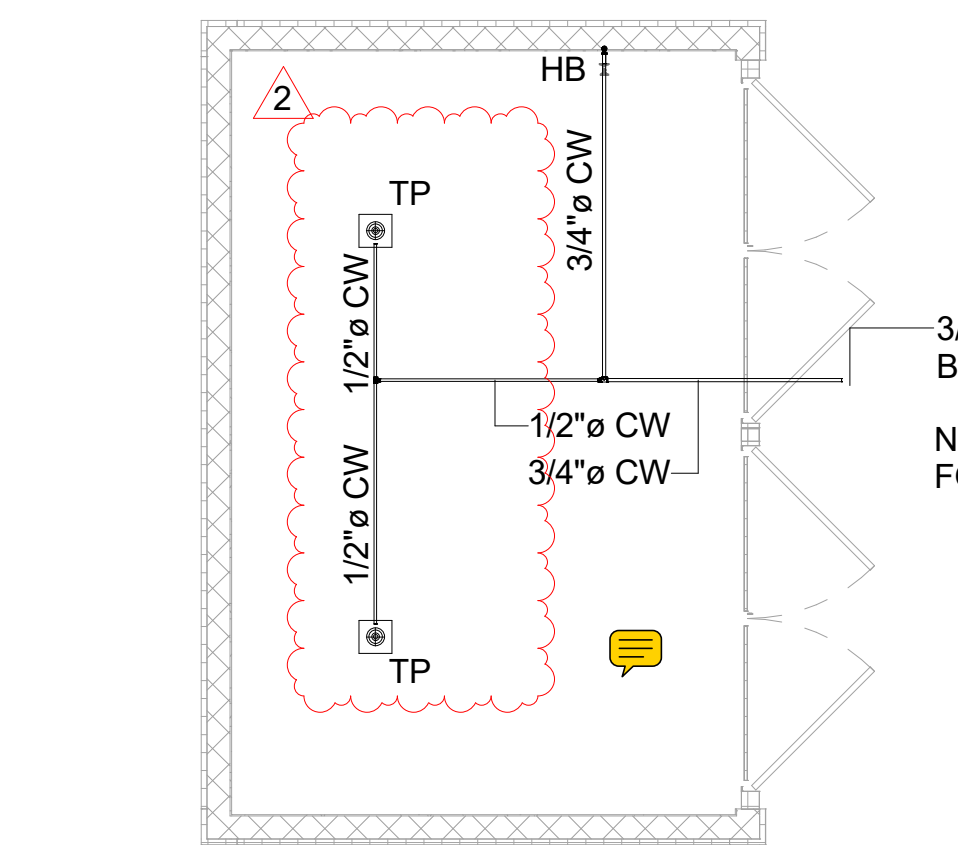


1 1ST FLOOR WATER & GAS SUPPLY PLAN OVERALL  
1/16" = 1'-0"

- GENERAL NOTES**
1. WATER HAMMER ARRESTORS SHALL BE PROVIDED AT ALL QUICK-CLOSING VALVES SUCH AS FLUSH VALVE, WASHING MACHINES, ICE MAKERS, REFRIGERATOR, DISHWASHERS, AND DRINKING FOUNTAINS. IT SHALL CONFORM TO ASSE1010.
  2. REFER TO THE UNIT PLANS FOR THE PIPING IN EACH UNIT.
  3. REFER TO THE ARCHITECTURAL DRAWING FOR PANTRY, FOOD PREP EQUIPMENT CALLOUTS.
  4. CONTRACTOR TO COORDINATE LOCATION OF PLUMBING RISER IN SHAFT WITH OTHER TRADES.
  5. REFER TO PLUMBING ISOMETRIC DRAWINGS FOR PIPE SIZES NOT LABELED IN PLANS.
  6. AS PER FLOW TEST REPORT IF STATIC PRESSURE IS LESS THEN 78 PSI BOOSTER PUMP IS REQUIRED, IF THESE PRESSURE CHANGES PLEASE CONTACT THE 'EOR'.
  7. PROVIDE INSULATION FOR ALL ICE MACHINE DRAIN TRAPS.
  8. ALL SHOWER AND SHOWER/TUBS SHALL HAVE PRESSURE BALANCING VALVES.
  9. BFP-2 TO BE PROVIDED FOR ALL ICE MACHINES NEAR COLD WATER SUPPLY.
  10. VIBRATION ISOLATOR TO BE GIVEN FOR BOOSTER PUMP & RECIRCULATION PUMPS.
  11. CONTRACTOR TO SELECT ALL VALVES AND SUBMIT SPECS TO BASE4 FOR REVIEW.
  12. POOL CONTRACTOR TO SUBMIT POOL HEATER SPEC. TO BASE4 FOR REVIEW & GAS HEATING LOADS.
  13. POOL CONTRACTOR TO CONNECT POOL HEATING PIPES TO DHU BEFORE POOL HEATER.



1 1ST FLOOR WATER & GAS SUPPLY PLAN - PART A  
1/8" = 1'-0"

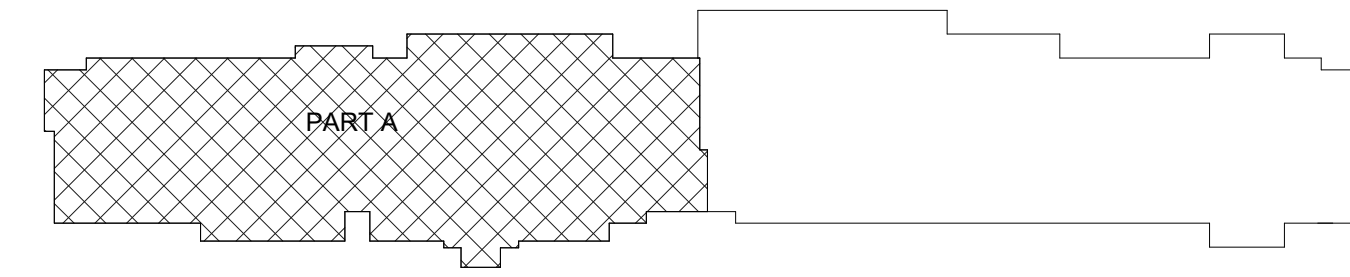


3/4" WATER SUPPLY FROM BUILDING  
NOTE: PLEASE REFER TO SITE PLAN FOR THE DUMPSTER LOCATION

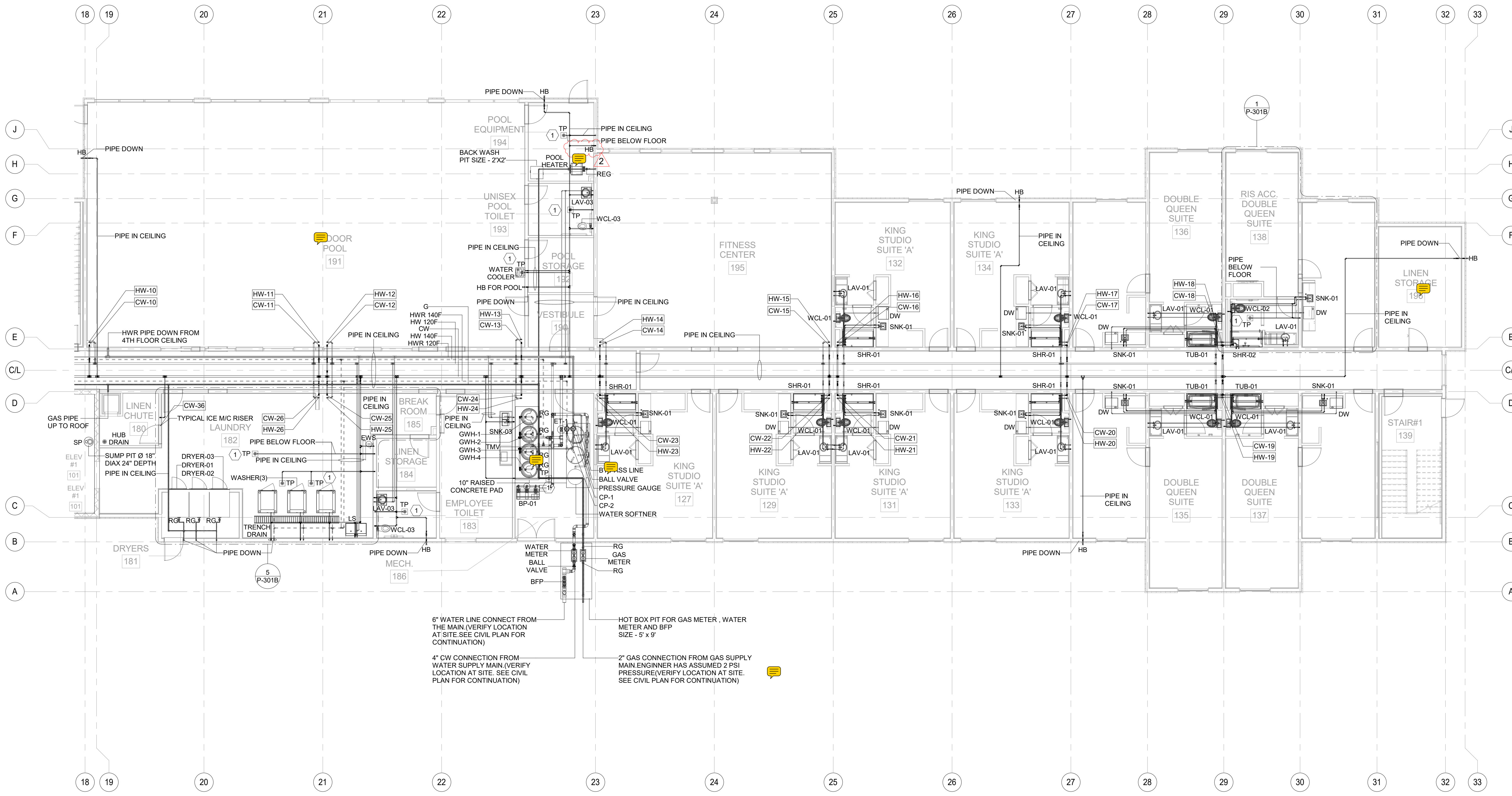
3 DUMPSTER WATER SUPPLY PLAN  
3/16" = 1'-0"

WATER SUPPLY KEY NOTES	
Tag	Text
1	PROVIDE AND INSTALL PRECISION PLUMBING PRODUCTS INC. #P1-500 TRAP PRIMER WITH 1/2" CW CONNECTION TO LINE INDICATED ON DRAWING. EXTEND OFF TOP OF LINE PER MANUFACTURER INSTRUCTIONS (OR) PROVIDE AND INSTALL THE PRO SET TRAP GUARD FLOOR DRAIN AS ALTERNATIVE.

- GENERAL NOTES**
- WATER HAMMER ARRESTORS SHALL BE PROVIDED AT ALL QUICK-CLOSING VALVES SUCH AS FLUSH VALVE, WASHING MACHINES, ICE MAKERS, REFRIGERATOR, DISHWASHERS, AND DRINKING FOUNTAINS. IT SHALL CONFORM TO ASSE1010.
  - REFER TO THE UNIT PLANS FOR THE PIPING IN EACH UNIT. REFER TO THE ARCHITECTURAL DRAWING FOR PANTRY, FOOD PREP EQUIPMENT CALLOUTS.
  - CONTRACTOR TO COORDINATE LOCATION OF PLUMBING RISER IN SHAFT WITH OTHER TRADES.
  - REFER TO PLUMBING ISOMETRIC DRAWINGS FOR PIPE SIZES NOT LABELED IN PLANS.
  - AS PER FLOW TEST REPORT IF STATIC PRESSURE IS LESS THEN 78 PSI BOOSTER PUMP IS REQUIRED. IF THESE PRESSURE CHANGES PLEASE CONTACT THE "EOR".
  - PROVIDE INSULATION FOR ALL ICE MACHINE DRAIN TRAPS. ALL SHOWER AND SHOWER/TUBS SHALL HAVE PRESSURE BALANCING VALVES.
  - BFP-2 TO BE PROVIDED FOR ALL ICE MACHINES, COFFEE MAKERS, TEA BREAWERS AND SODA DISPENSORS NEAR COLD WATER SUPPLY.
  - VIBRATION ISOLATOR TO BE GIVEN FOR BOOSTER PUMP & RECIRCULATION PUMPS
  - CONTRACTOR TO SELECT ALL VALVES AND SUBMIT SPECS TO BASE4 FOR REVIEW.
  - POOL CONTRACTOR TO SUBMIT POOL HEATER SPEC. TO BASE4 FOR REVIEW & GAS HEATING LOADS.
  - POOL CONTRACTOR TO CONNECT POOL HEATING PIPES TO DHU BEFORE POOL HEATER.
  - ALL PUBLIC HAND WASHING SINKS THE HOT WATER TEMPERATUR SHALL NOT EXCEED 110°F TEMPERATURE. CONTRACTOR TO MAKES SURE THAT THE TEMPERATUR OR SINKS BE MAITIANED TO 110°F.



KEY PLAN - PART A



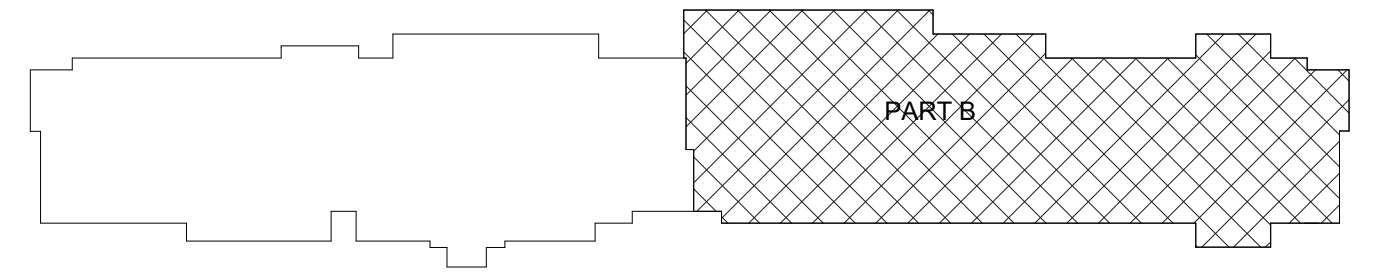
**1 1ST FLOOR WATER & GAS SUPPLY PLAN - PART B**  
 1/8" = 1'-0"

NOTE:  
 1. CONTRACTOR SHALL PROVIDE HOT BOX SPECIFICATIONS TO BASE4 FOR REVIEW. BASE4 SUGGESTS MAKE : "SAFETCOVER"

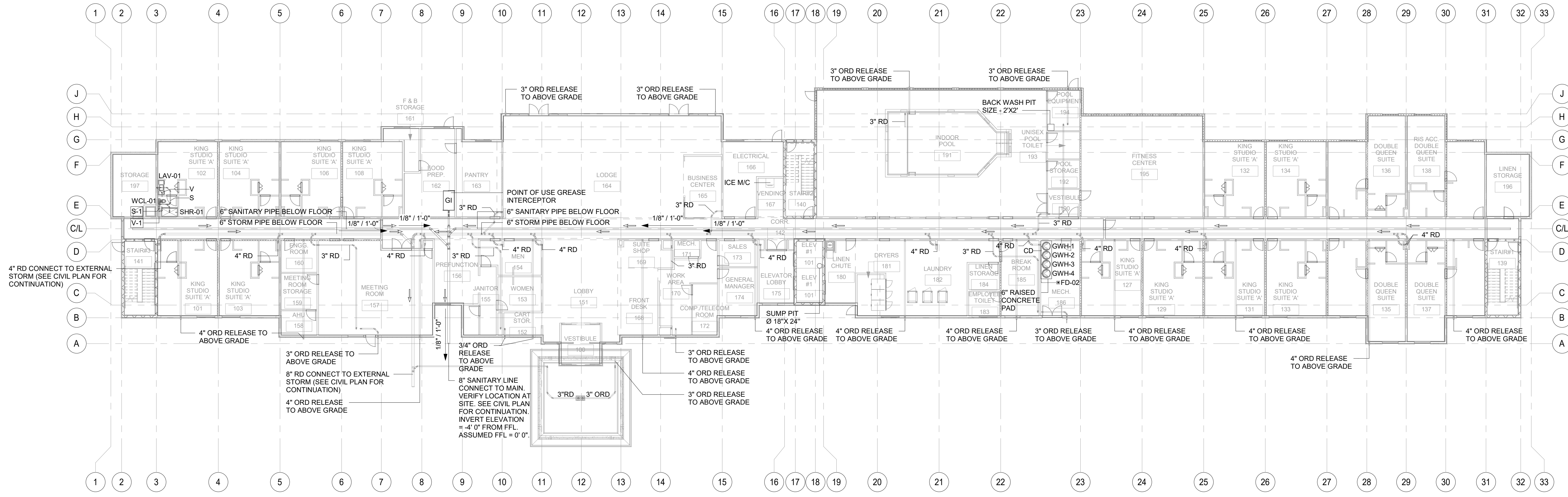
Tag	Text
1	PROVIDE AND INSTALL PRECISION PLUMBING PRODUCTS INC. #P1-500 TRAP PRIMER WITH 1/2" CW CONNECTION TO LINE INDICATED ON DRAWING. EXTEND OFF TOP OF LINE PER MANUFACTURER INSTRUCTIONS.(OR) PROVIDE AND INSTALL THE PRO SET TRAP GUARD FLOOR DRAIN AS ALTERNATIVE.

**GENERAL NOTES**

- WATER HAMMER ARRESTORS SHALL BE PROVIDED AT ALL QUICK-CLOSING VALVES SUCH AS FLUSH VALVE, WASHING MACHINES, ICE MAKERS, REFRIGERATOR, DISHWASHERS, AND DRINKING FOUNTAINS. IT SHALL CONFORM TO ASSE1010.
- REFER TO THE UNIT PLANS FOR THE PIPING IN EACH UNIT.
- REFER TO THE ARCHITECTURAL DRAWING FOR PANTRY, FOOD PREP EQUIPMENT CALLOUTS.
- CONTRACTOR TO COORDINATE LOCATION OF PLUMBING RISER IN SHAFT WITH OTHER TRADES.
- REFER TO PLUMBING ISOMETRIC DRAWINGS FOR PIPE SIZES NOT LABELED IN PLANS.
- AS PER FLOW TEST REPORT IF STATIC PRESSURE IS LESS THEN 78 PSI BOOSTER PUMP IS REQUIRED. IF THESE PRESSURE CHANGES PLEASE CONTACT THE "EOR".
- PROVIDE INSULATION FOR ALL ICE MACHINE DRAIN TRAPS.
- ALL SHOWER AND SHOWER/TUBS SHALL HAVE PRESSURE BALANCING VALVES.
- BFP-2 TO BE PROVIDED FOR ALL ICE MACHINES, COFFEE MAKERS, TEA BREWERS AND SODA DISPENSORS NEAR COLD WATER SUPPLY.
- VIBRATION ISOLATOR TO BE GIVEN FOR BOOSTER PUMP & RECIRCULATION PUMPS.
- CONTRACTOR TO SELECT ALL VALVES AND SUBMIT SPECS TO BASE4 FOR REVIEW.
- POOL CONTRACTOR TO SUBMIT POOL HEATER SPEC. TO BASE4 FOR REVIEW & GAS HEATING LOADS.
- POOL CONTRACTOR TO CONNECT POOL HEATING PIPES TO DHU BEFORE POOL HEATER.
- ALL PUBLIC HAND WASHING SINKS THE HOT WATER TEMPERATUR SHALL NOT EXCEED 110°F TEMPERATURE, CONTRACTOR TO MAKES SURE THAT THE TEMPERATUR OR SINKS BE MAITANED TO 110°F.

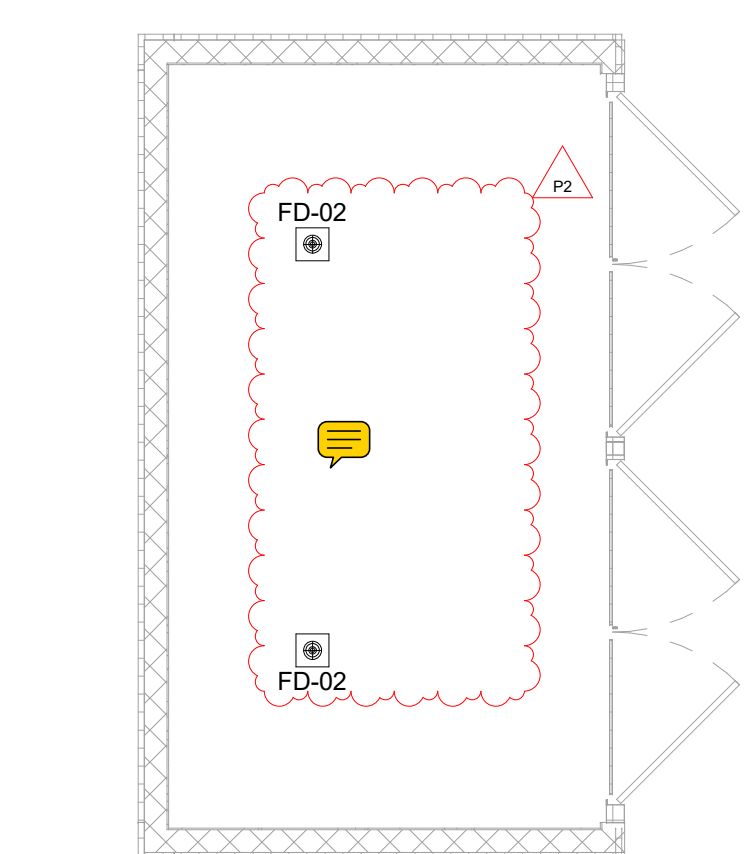
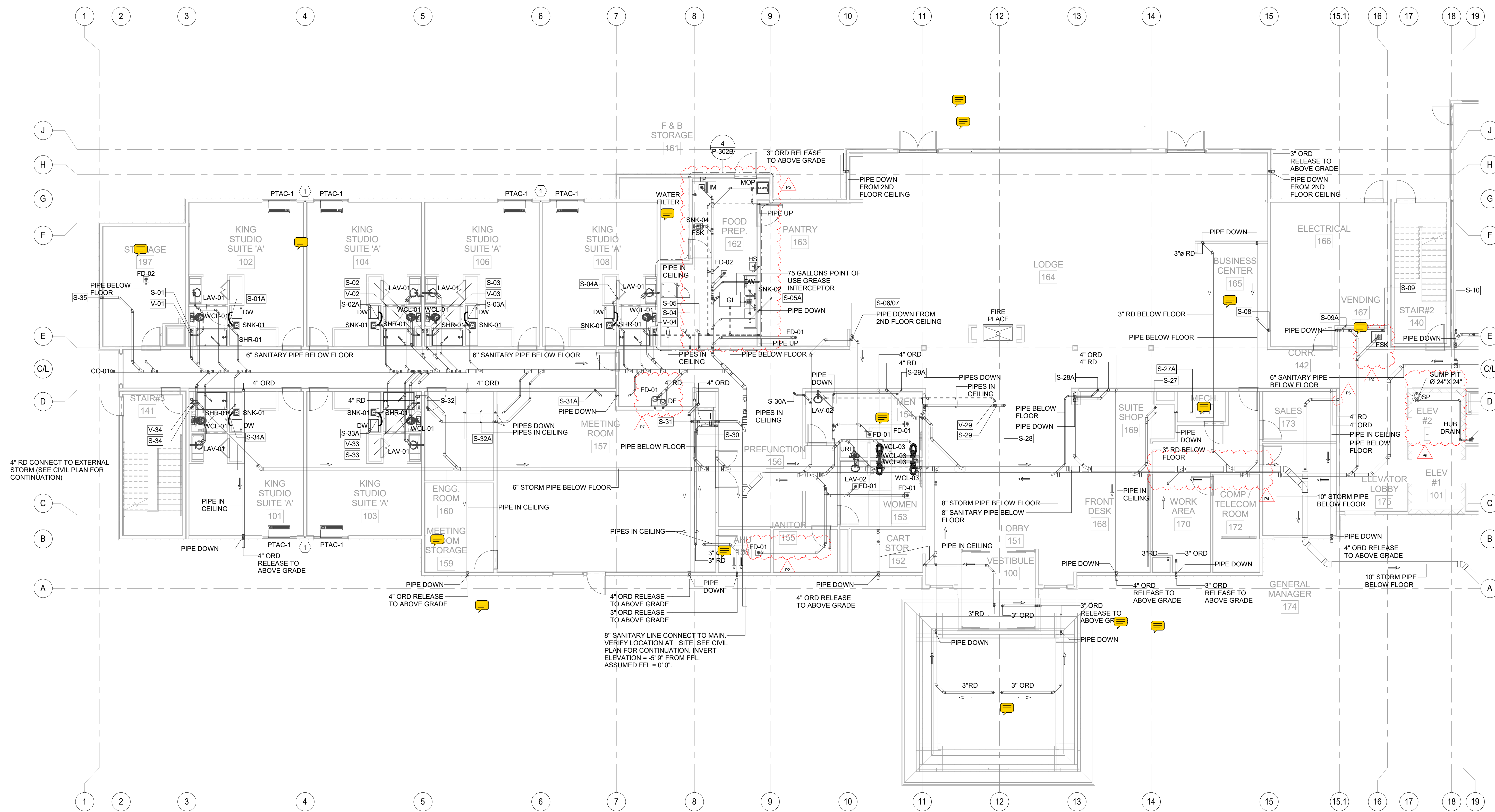


KEY PLAN - PART B



1 1ST FLOOR SANITARY & VENT PLAN OVERALL  
 1/16" = 1'-0"

- GENERAL NOTES**
- REFER TO THE UNIT PLANS FOR THE PIPING IN EACH UNIT.
  - REFER TO THE ARCHITECTURAL DRAWING FOR PANTRY EQUIPMENT CALLOUTS.
  - CONTRACTOR TO COORDINATE LOCATION OF PLUMBING RISER IN SHAFT WITH OTHER TRADES.
  - REFER TO PLUMBING ISOMETRIC DRAWINGS FOR PIPE SIZES NOT LABELED IN PLANS.
  - ALL STORM TO BE INSULATED VERTICALLY AND HORIZONTALLY.
  - ALL SANITARY TO BE INSULATED ON ALL HORIZONTAL RUNS IN SLEEPING, PUBLIC AREAS, AND BACK-OFFICE AREAS.
  - CONTRACTOR SHALL INSTALL PRESSURE RATED FITTINGS AND CLEANOUTS FOR ALL 8" SANITARY PIPE.



NOTE: PLEASE REFER TO SITE PLAN FOR THE DUMPSTER LOCATION

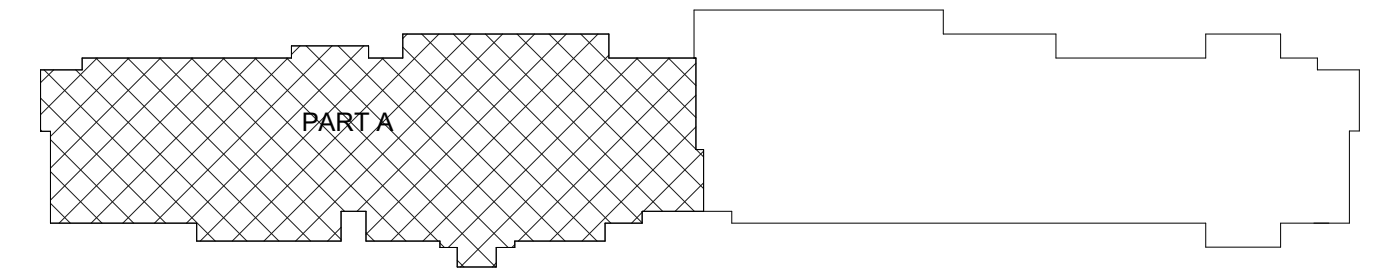
4" DRAIN LINE CONNECTS TO NEAREST STORM LINE (CIVIL TO COORDINATE WITH THE LOCATION)

1 1ST FLOOR SANITARY & VENT PLAN - PART A  
1/8" = 1'-0"

Tag	Text
1	3/4" CONDENSATE RISER DOWN. SEE LOWER FLOOR PLANS FOR CONTINUATION. ROUTE EACH CONDENSATE VERTICAL RISER TO CONNECT TO STORM LINE. GC TO COORDINATE CONNECTION & ENSURE SLOPE OF 1/8" FT FOR THE HORIZONTAL RUN OF PIPE. TYPICAL FOR ALL PTAC UNITS CONDENSATE DRAINAGE UNLESS NOTED OTHERWISE.

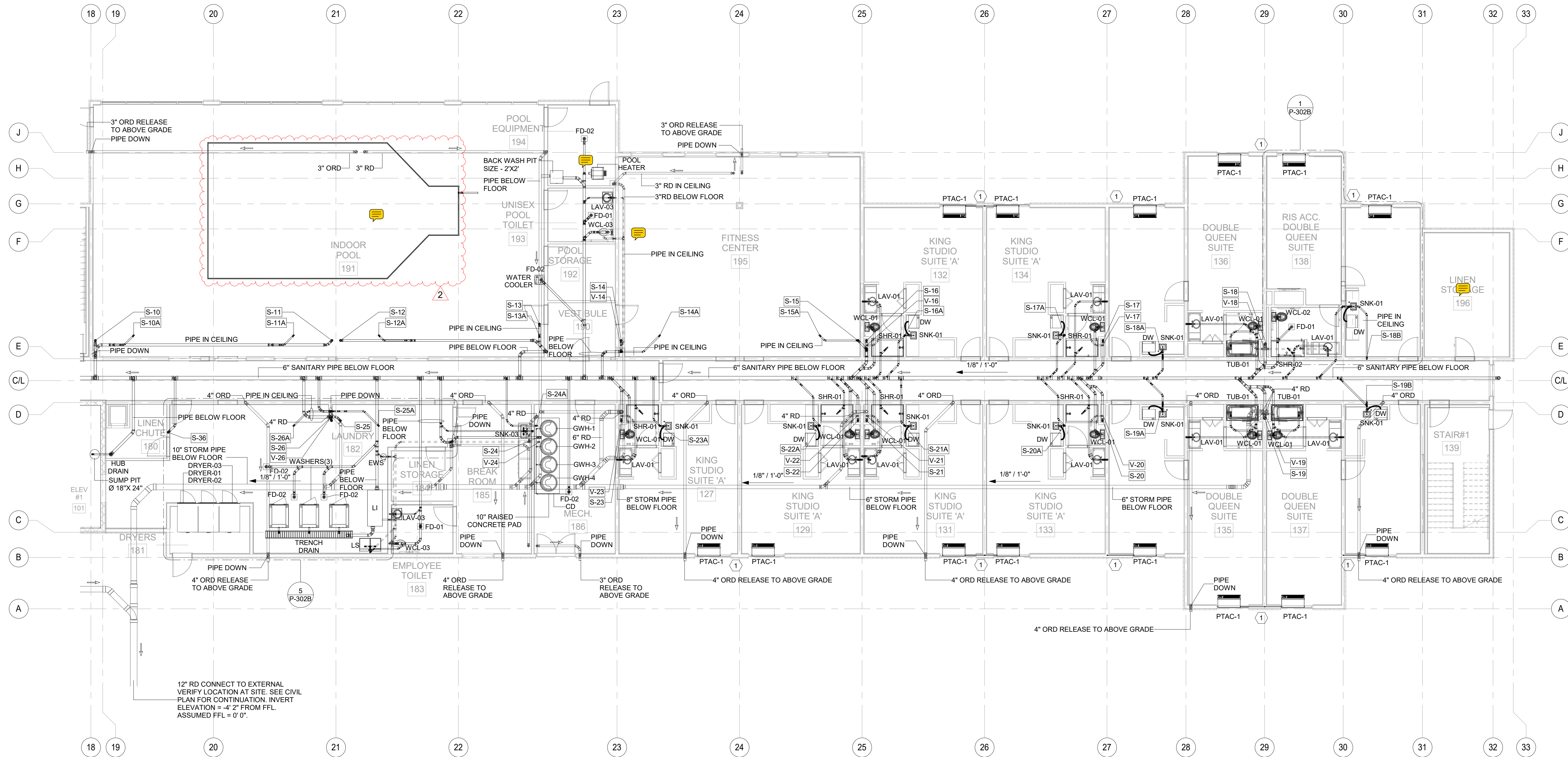
- GENERAL NOTES**
- REFER TO THE UNIT PLANS FOR THE PIPING IN EACH UNIT.
  - REFER TO THE ARCHITECTURAL DRAWING FOR PANTRY EQUIPMENT CALLOUTS.
  - CONTRACTOR TO COORDINATE LOCATION OF PLUMBING RISER IN SHAFT WITH OTHER TRADES.
  - REFER TO PLUMBING ISOMETRIC DRAWINGS FOR PIPE SIZES NOT LABELED IN PLANS.
  - ALL STORM PIPES TO BE INSULATED VERTICALLY AND HORIZONTALLY.
  - ALL SANITARY TO BE INSULATED ON ALL HORIZONTAL RUNS IN SLEEPING, PUBLIC AREAS, AND BACK-OFFICE AREAS.
  - CONTRACTOR SHALL INSTALL PRESSURE RATED FITTINGS AND CLEANOUTS FOR ALL 8" SANITARY PIPE.
  - POOL VENDOR TO PROVIDE COMPLETE POOL DESIGN TO BASE4 FOR REVIEW.
  - CONTRACTOR SHALL PROVIDE AIR ADMITTANCE VALVE FOR DISHWASHERS DRAIN LINES AT ALL KITCHENETTE SINKS BEFORE CONNECTION TO GARBAGE DISPOSAL.
  - CONTRACTOR SHALL ENSURE TO PROVIDE TRIP PRIMER FOR TRENCH DRAIN AND TRENCH DRAIN GRATING OVER DRAIN IN EACH DIRECTION OF OPENINGS MUST BE LESS THEN 1/2" FOR ADA ACCESSIBLE TRAVEL.
  - CONTRACTOR SHALL ENSURE TO PROVIDE ALL EXPOSED PIPES IN THE GUEST BATHROOM TO BE CHROME FINISH.

**REVIEWED**  
By NYE at 7:43 pm, Jul 08, 2019



KEY PLAN - PART A

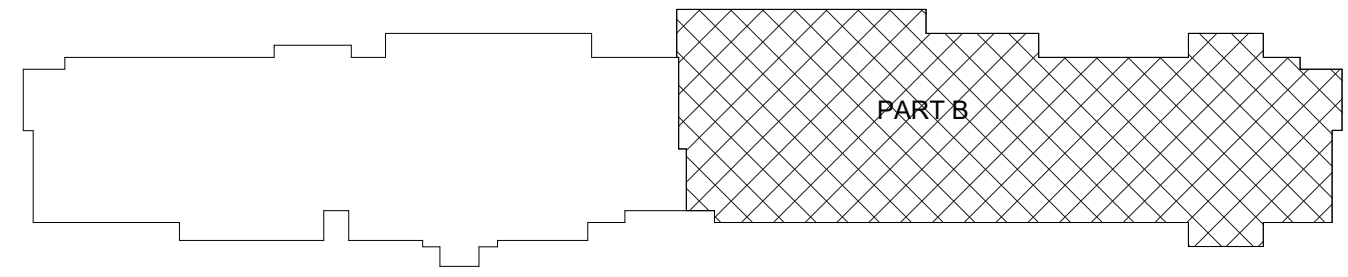
3 DUMPSTER PLAN  
3/16" = 1'-0"



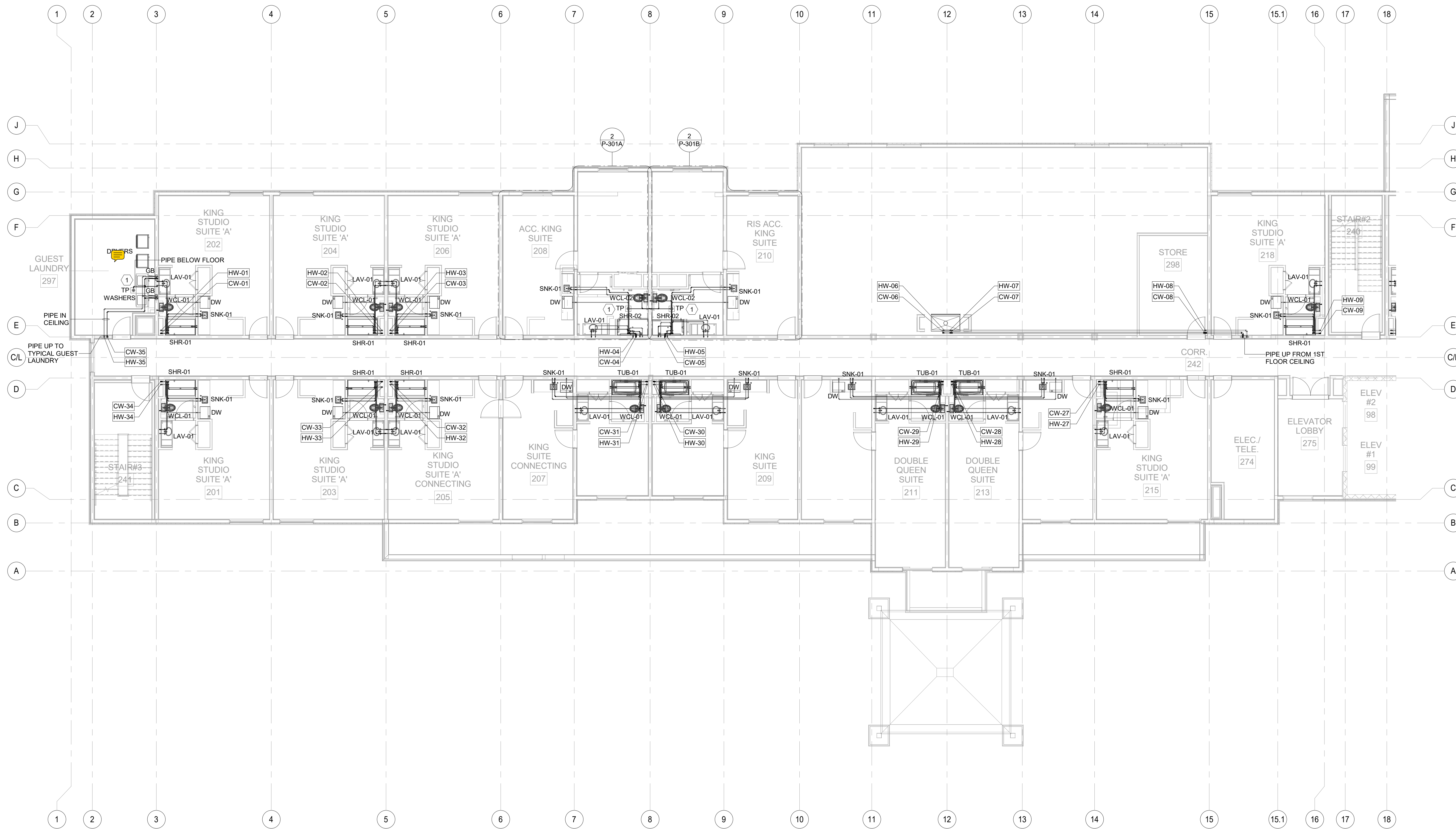
1 1ST FLOOR SANITARY & VENT PLAN - PART B  
1/8" = 1'-0"

Tag	Text
1	3/4" CONDENSATE RISER DOWN, SEE LOWER FLOOR PLANS FOR CONTINUATION. ROUTE EACH CONDENSATE VERTICAL RISER TO CONNECT TO STORM LINE. GC TO COORDINATE CONNECTION & ENSURE SLOPE OF 1/8"FT FOR THE HORIZONTAL RUN OF PIPE. TYPICAL FOR ALL PTAC UNITS CONDENSATE DRAINAGE UNLESS NOTED OTHERWISE.

- GENERAL NOTES**
- REFER TO THE UNIT PLANS FOR THE PIPING IN EACH UNIT.
  - REFER TO THE ARCHITECTURAL DRAWING FOR PANTRY EQUIPMENT CALLOUTS.
  - CONTRACTOR TO COORDINATE LOCATION OF PLUMBING RISER IN SHAFT WITH OTHER TRADES.
  - REFER TO PLUMBING ISOMETRIC DRAWINGS FOR PIPE SIZES NOT LABELED IN PLANS.
  - ALL STORM PIPES TO BE INSULATED VERTICALLY AND HORIZONTALLY.
  - ALL SANITARY TO BE INSULATED ON ALL HORIZONTAL RUNS IN SLEEPING, PUBLIC AREAS, AND BACK-OFFICE AREAS.
  - CONTRACTOR SHALL INSTALL PRESSURE RATED FITTINGS AND CLEANOUTS FOR ALL 8" SANITARY PIPE.
  - POOL VENDOR TO PROVIDE COMPLETE POOL DESIGN TO BASE4 FOR REVIEW.
  - CONTRACTOR SHALL PROVIDE AIR ADMITTANCE VALVE FOR DISHWASHERS DRAIN LINES AT ALL KITCHENETTE SINKS BEFORE CONNECTION TO GARBAGE DISPOSAL.
  - CONTRACTOR SHALL ENSURE TO PROVIDE TRIP PRIMER FOR TRENCH DRAIN AND TRENCH DRAIN GRATING OVER DRAIN IN EACH DIRECTION OF OPENINGS MUST BE LESS THEN 1/2" FOR ADA ACCESSIBLE TRAVEL.

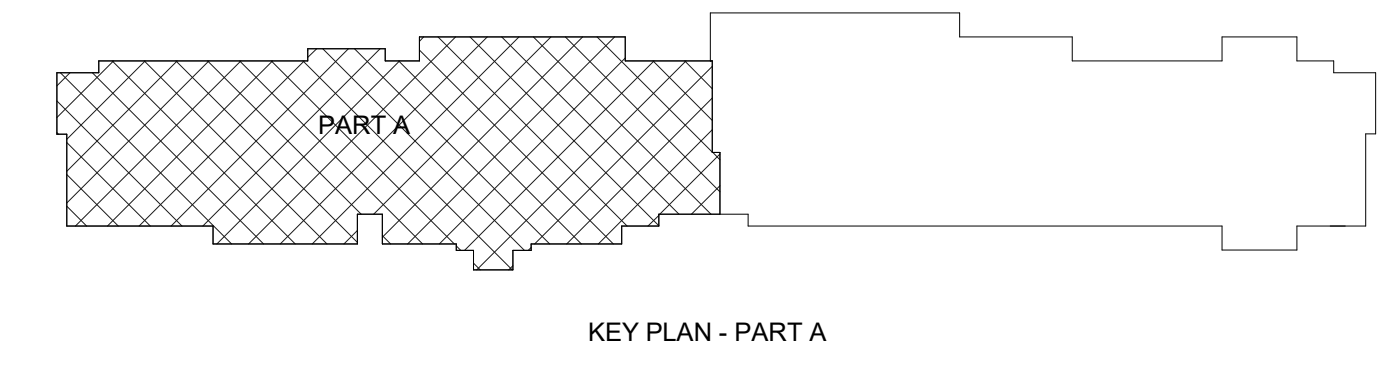


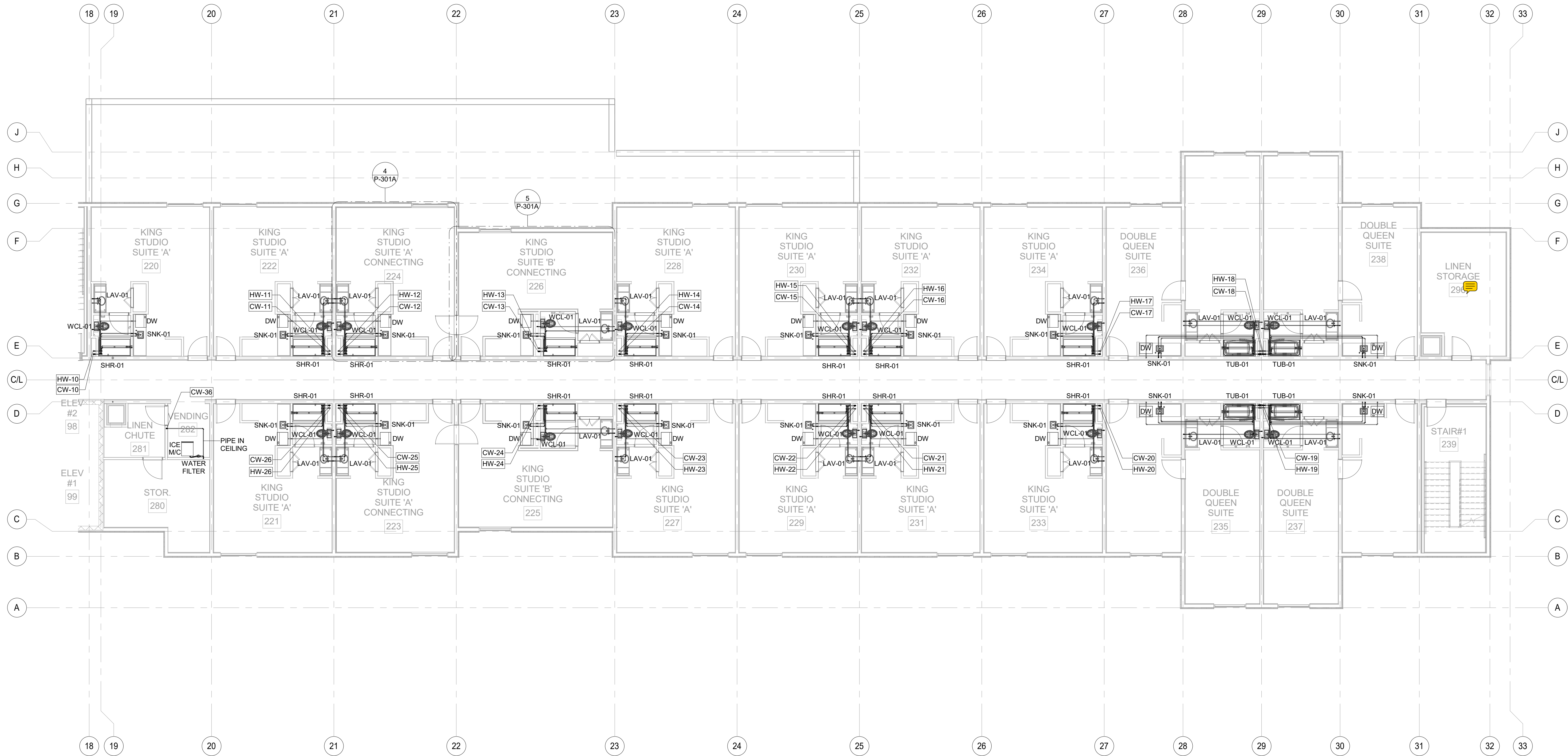
KEY PLAN - PART B



1 2ND FLOOR WATER & GAS SUPPLY PLAN  
1/8" = 1'-0"

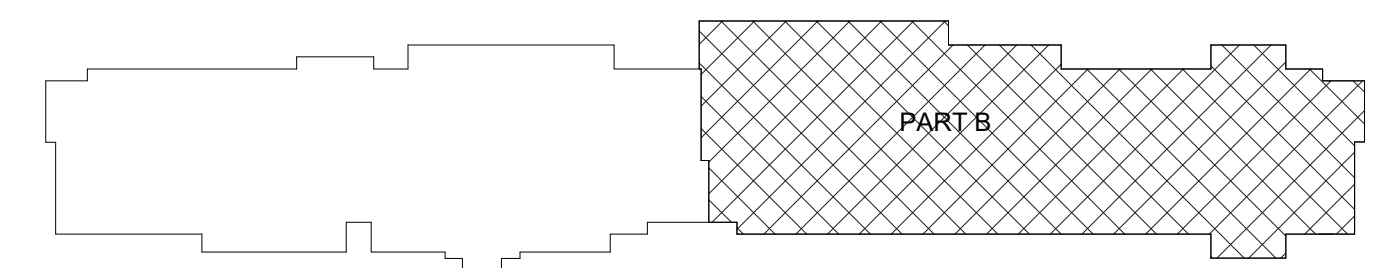
WATER SUPPLY KEY NOTES	
Tag	Text
1	PROVIDE AND INSTALL PRECISION PLUMBING PRODUCTS INC. #P1-500 TRAP PRIMER WITH 1/2" CW CONNECTION TO LINE INDICATED ON DRAWING. EXTEND OFF TOP OF LINE PER MANUFACTURER INSTRUCTIONS. (OR) PROVIDE AND INSTALL THE PRO SET TRAP GUARD FLOOR DRAIN AS ALTERNATIVE.





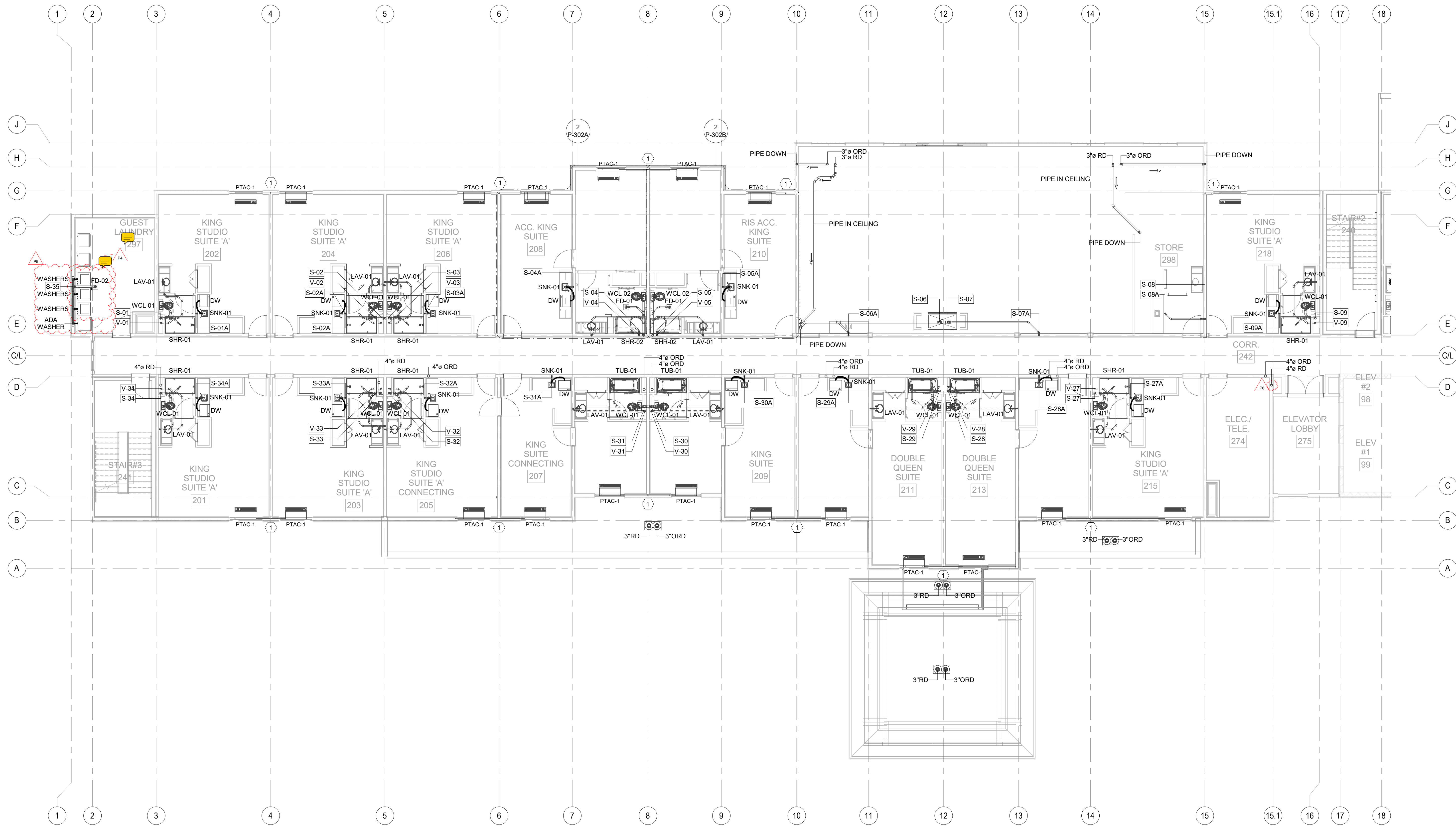
1 2ND FLOOR WATER & GAS SUPPLY PLAN  
1/8" = 1'-0"

WATER SUPPLY KEY NOTES	
Tag	Text
1	PROVIDE AND INSTALL PRECISION PLUMBING PRODUCTS INC. #P1-500 TRAP PRIMER WITH 1/2" CW CONNECTION TO LINE INDICATED ON DRAWING. EXTEND OFF TOP OF LINE PER MANUFACTURER INSTRUCTIONS. (OR) PROVIDE AND INSTALL THE PRO SET TRAP GUARD FLOOR DRAIN AS ALTERNATIVE.



KEY PLAN - PART B

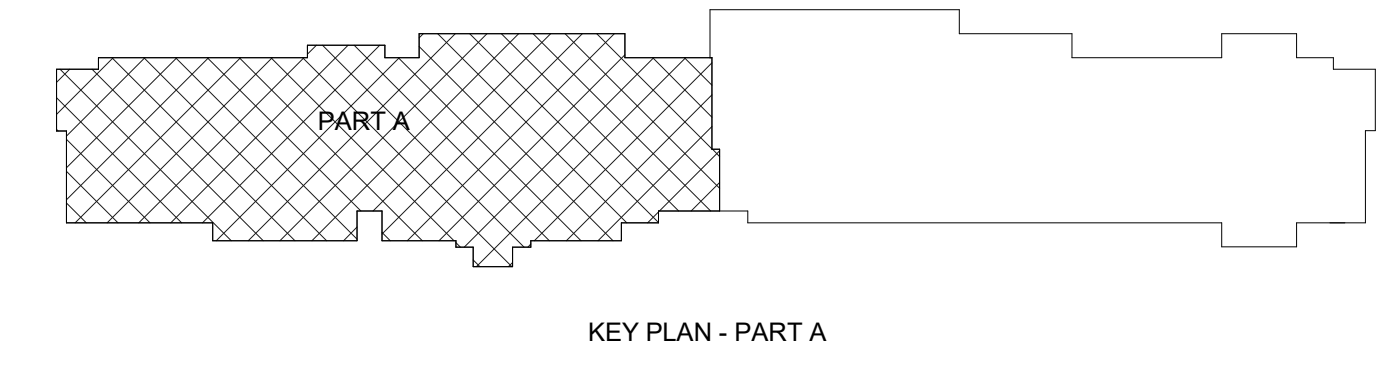


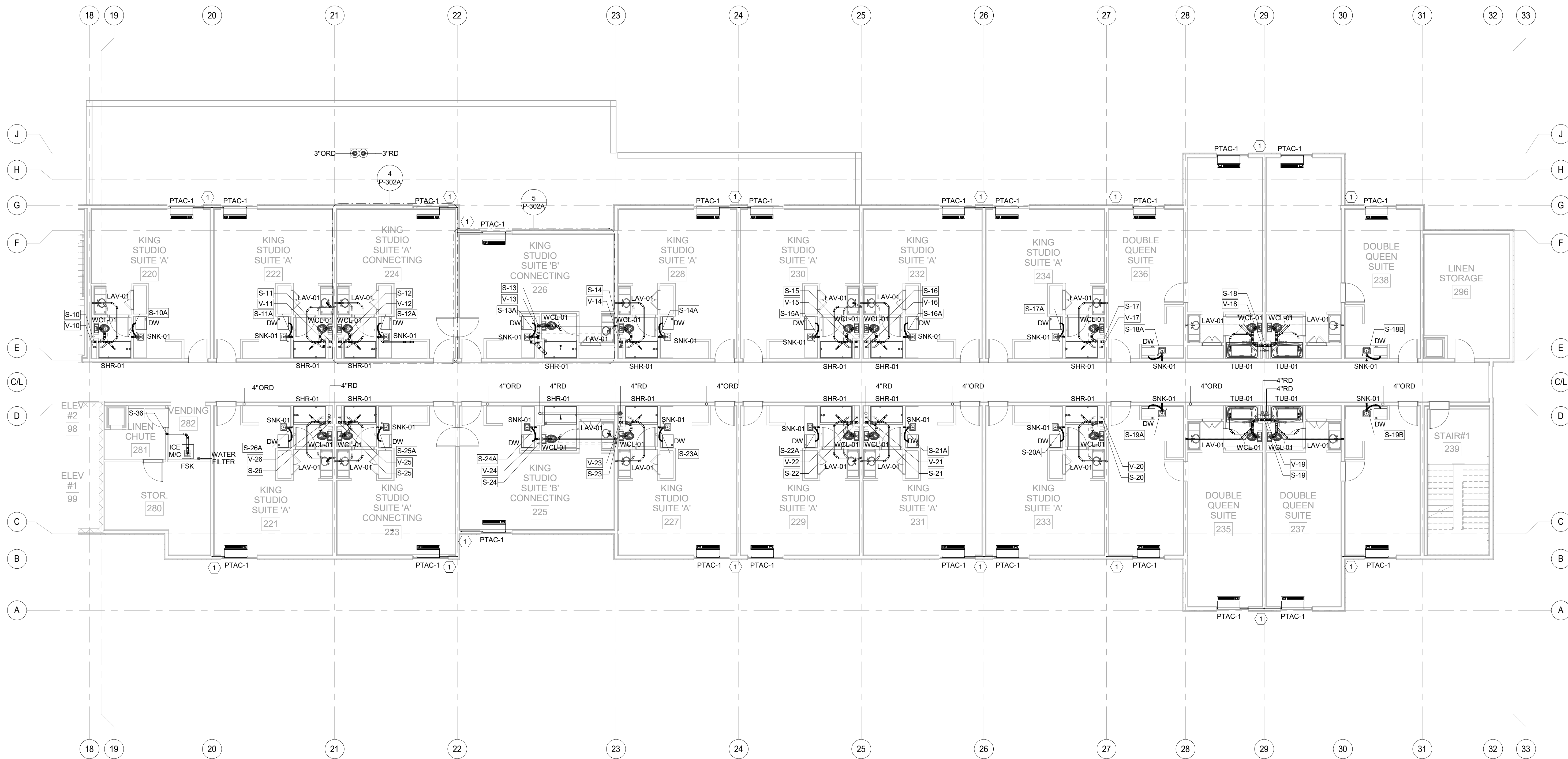


1 2ND FLOOR SANITARY & VENT PLAN  
1/8" = 1'-0"

**REVIEWED**  
By NYE at 7:42 pm, Jul 08, 2019

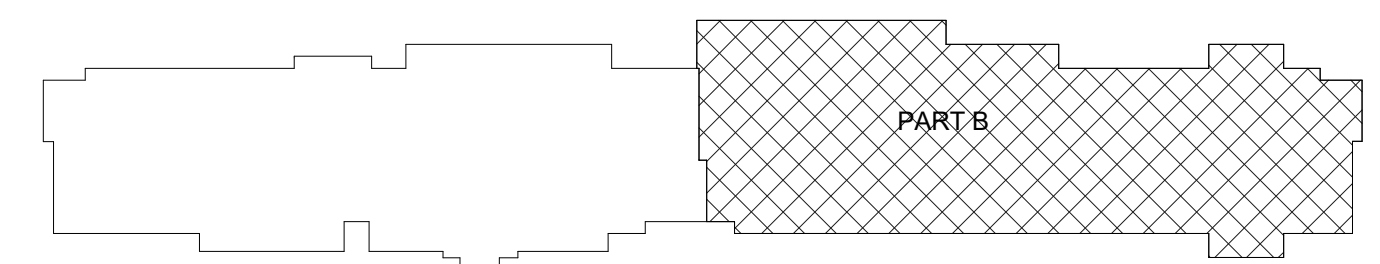
SANITARY & VENT KEYNOTES (TYPICAL FLOOR)	
Tag	Text
1	3/4" CONDENSATE RISER DOWN, SEE LOWER FLOOR PLANS FOR CONTINUATION. ROUTE EACH CONDENSATE VERTICAL RISER TO CONNECT TO STORM LINE. GC TO COORDINATE CONNECTION & ENSURE SLOPE OF 1/8"FT FOR THE HORIZONTAL RUN OF PIPE. TYPICAL FOR ALL PTAC UNITS CONDENSATE DRAINAGE UNLESS NOTED OTHERWISE.





1 2ND FLOOR SANITARY & VENT PLAN  
1/8" = 1'-0"

SANITARY & VENT KEYNOTES (TYPICAL FLOOR)	
Tag	Text
1	3/4" CONDENSATE RISER DOWN, SEE LOWER FLOOR PLANS FOR CONTINUATION. ROUTE EACH CONDENSATE VERTICAL RISER TO CONNECT TO STORM LINE. GC TO COORDINATE CONNECTION & ENSURE SLOPE OF 1/8"FT FOR THE HORIZONTAL RUN OF PIPE. TYPICAL FOR ALL PTAC UNITS CONDENSATE DRAINAGE UNLESS NOTED OTHERWISE.



KEY PLAN - PART B