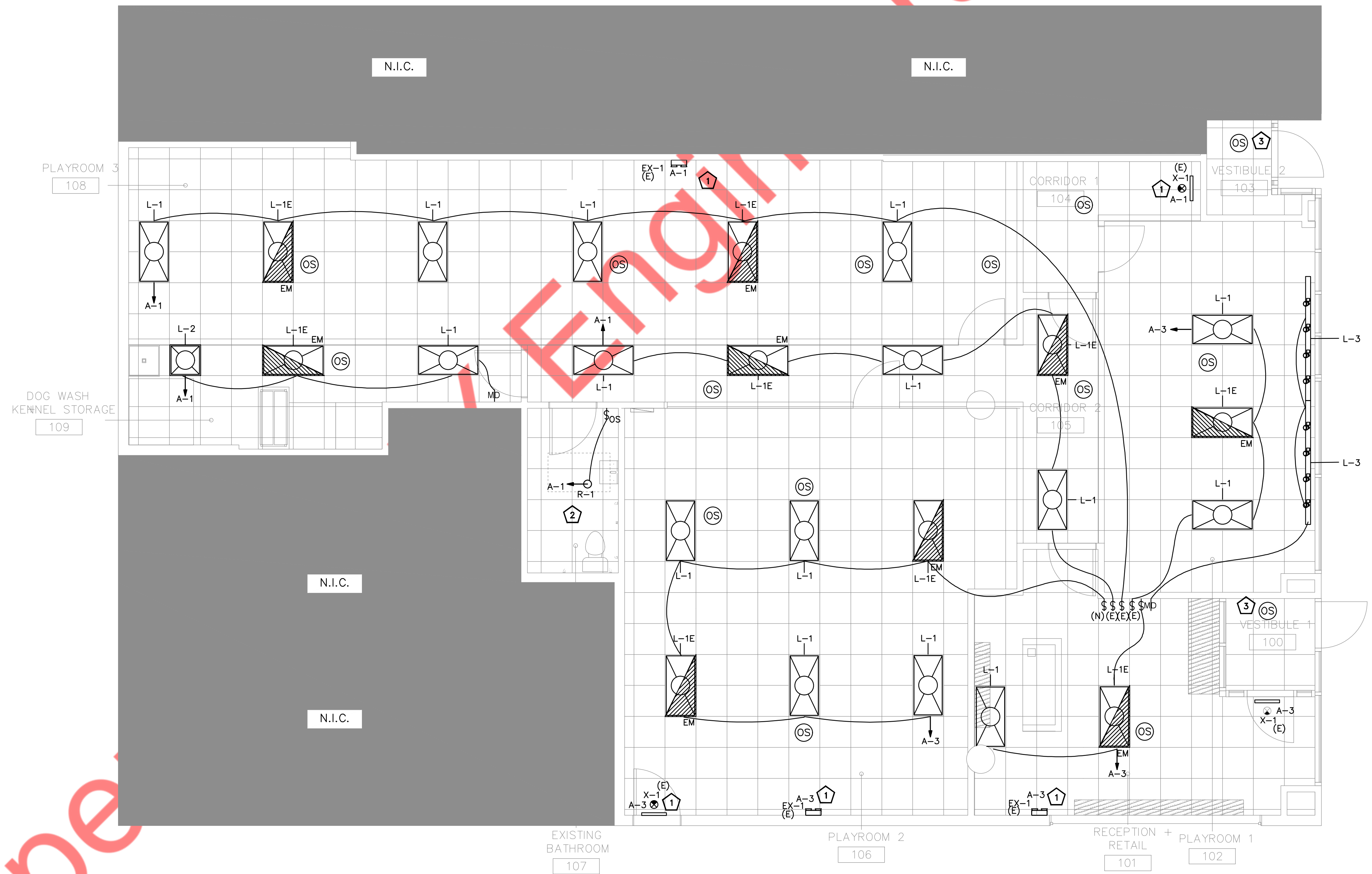


LIGHTING DRAWING NOTES:

1. REFER TO DWG. E000 FOR ELECTRICAL GENERAL NOTES, SYMBOL LIST, ABBREVIATIONS.
2. ALL BRANCH CIRCUIT HOMERUNS ASSIGN INDICATED ON THIS PLAN SHALL BE CIRCUITED TO EXISTING PANEL "A" AS SHOWN ON PLAN, CIRCUIT NUMBER INDICATED, U.O.N.
3. FINAL FIXTURE MAKE AND MANUFACTURER OF THE LIGHT FIXTURE TO BE COORDINATED WITH ARCHITECT/OWNER.

KEYED NOTE WORK - ELECTRICAL

1. CONNECT ALL EMERGENCY EGRESS AND NIGHT LIGHTING FIXTURES TO NEAREST LIGHTING BRANCH CIRCUIT AHEAD OF ALL SWITCHING AND CONTROLS. EXIT SIGNS SHALL NOT EXCEED 5 WATTS PER FACE.
2. RESTROOM EXHAUST FAN SHALL BE CIRCUITED AND CONTROLLED ALONG WITH THE LIGHT FIXTURES IN THE SAME ROOM.
3. ELECTRICAL CONTRACTOR SHALL COORDINATE WITH OWNER FOR LIGHTING AND CONTROLS IN THIS AREA AND VERIFY THE OPERABLE CONDITION OF THE CONTROLS. PROVIDE NEW CONTROLS AS INDICATED IF FOUND INOPERABLE.



① LEVEL 1 LIGHTING PLAN
1/4" = 1'-0"

ELECTRICAL GENERAL NOTES:

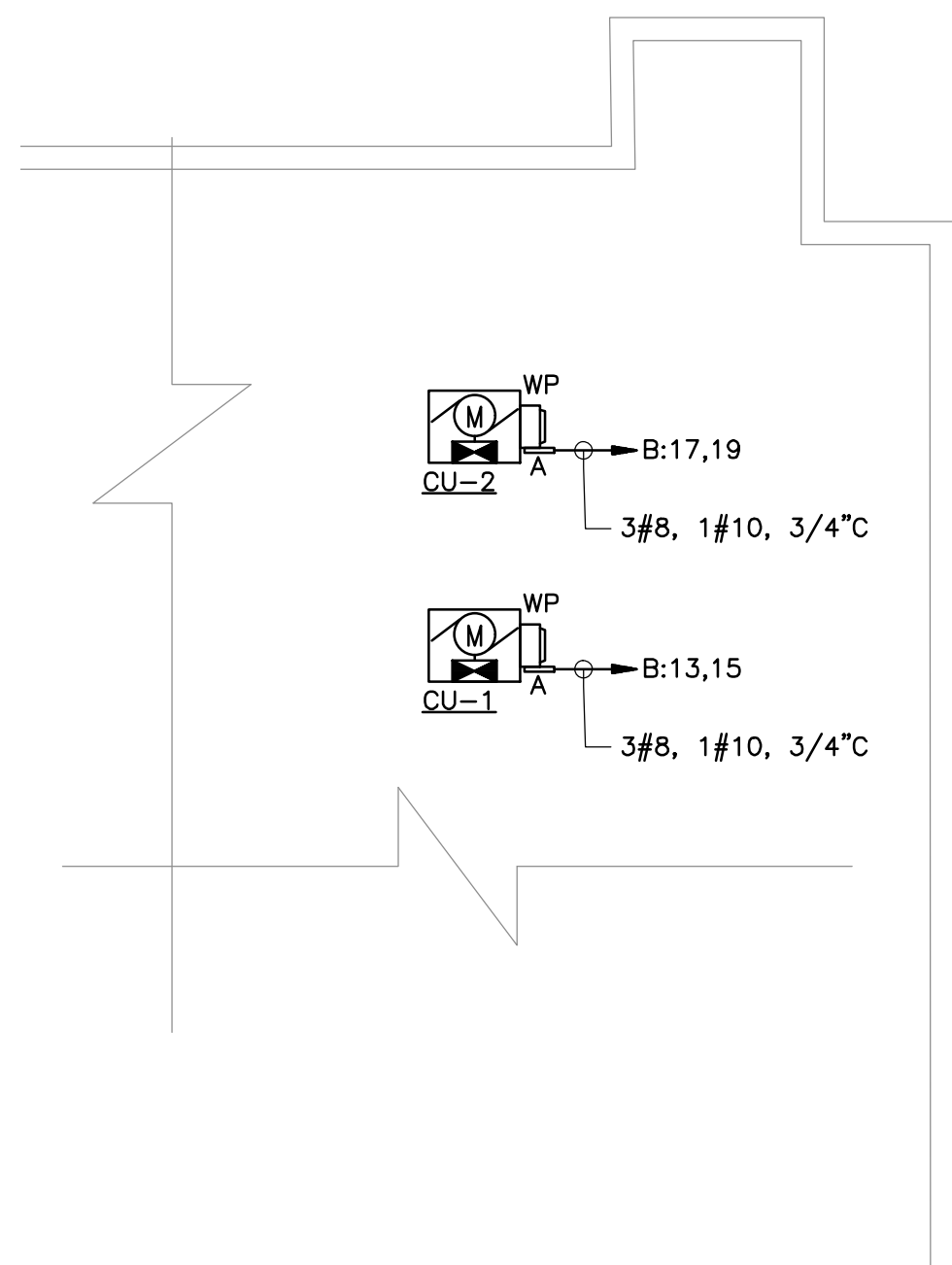
1. E.C. SHALL COORDINATE EXACT ELECTRICAL OUTLET / DATA LOCATIONS WITH FURNITURE PRIOR TO INSTALLATION. FAILURE TO COORDINATE FURNITURE FINAL LOCATIONS WITH ELECTRICAL WILL RESULT IN CHANGES AT NO COST TO THE OWNER IF NO PRIOR COORDINATION WITH FURNITURE IS DONE.
2. REFER TO DWG. E000 FOR ELECTRICAL SYMBOL LIST, ABBREVIATIONS AND GENERAL NOTES. E001 AND E002 FOR ADDITIONAL ELECTRICAL SPECIFICATIONS.
3. ALL BRANCH CIRCUIT HOMERUNS ASSIGN INDICATED ON THIS PLAN SHALL BE CIRCUITED TO EXISTING PANEL "A", AS SHOWN ON PLAN, CIRCUIT NUMBER INDICATED, U.O.N.
4. VERIFY WITH OWNER/ARCHITECT FOR ANY ADDITIONAL ELECTRICAL CONNECTION REQUIRED.

KEYED NOTE WORK - ELECTRICAL

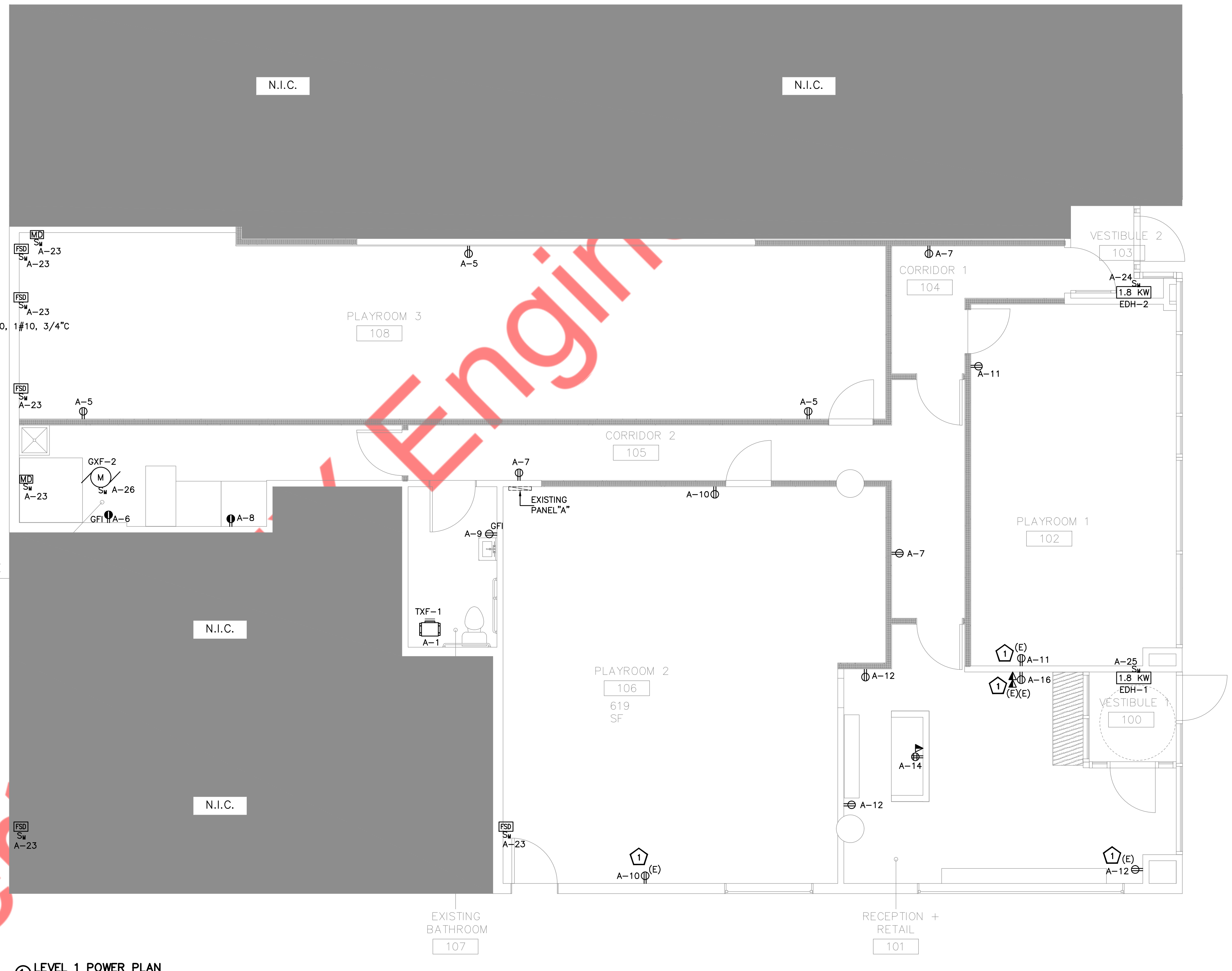
1 EXISTING ELECTRICAL OUTLET. E.C TO VERIFY ASSOCIATED ELECTRICAL EQUIPMENT IS IN GOOD WORKING CONDITION AND CIRCUIT IT TO EXISTING ELECTRICAL PANEL "A" AS INDICATED ON DRAWINGS.

2 TOILET EXHAUST FAN TO BE CONTROL ALONG WITH LIGHT FIXTURE OF SAME ROOM.

EXISTING ELECTRICAL PANEL "A" SHALL REMAIN. E.C. TO COORDINATE EXACT LOCATION WITH ARCHITECT/OWNER.



2 PARTIAL ROOF PLAN
1/4" = 1'-0"



1 LEVEL 1 POWER PLAN
1/4" = 1'-0"