

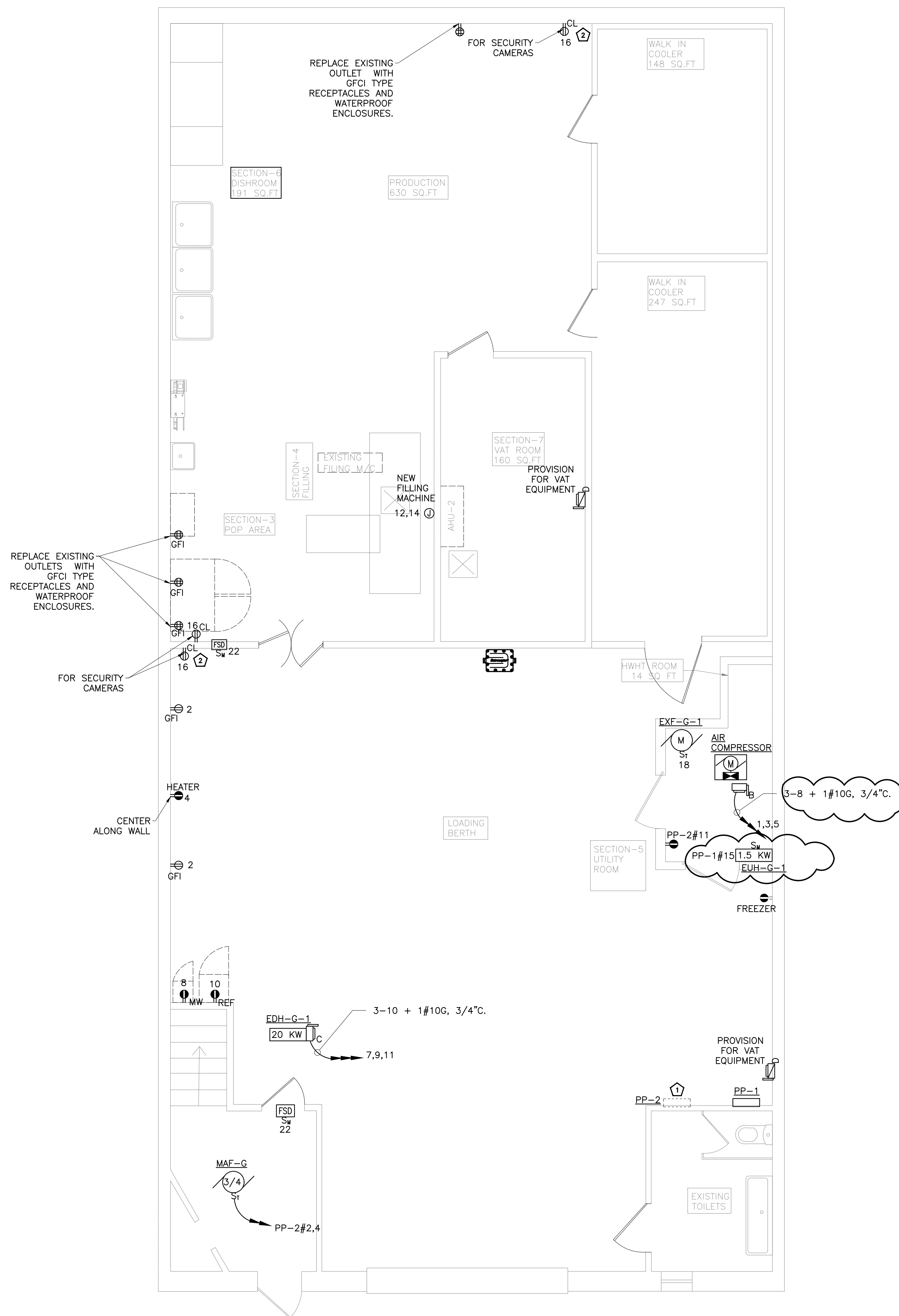
**KEYED WORK NOTES:**

- 1 MATCH LIGHT FIXTURE WITH EXISTING FIXTURE. COORDINATE SPECIFICATIONS WITH OWNER AND BASE BID ACCORDINGLY.
- 2 CONNECT TO NEARBY EXISTING LIGHTING CIRCUIT.

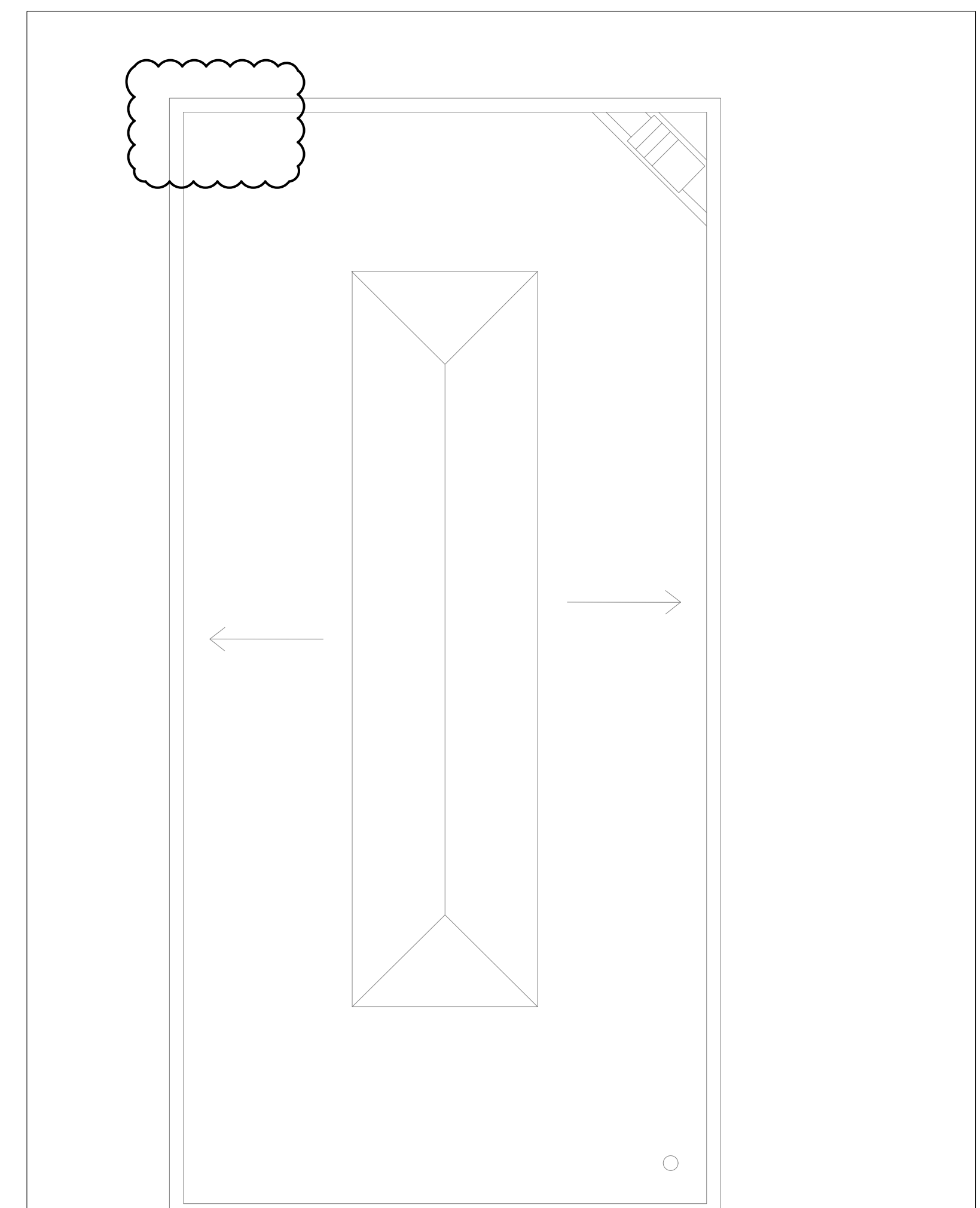
**LIGHTING DRAWING NOTES:**

- 1. REFER TO DWG. E-001.00 FOR ELECTRICAL GENERAL NOTES, SYMBOL LIST, ABBREVIATIONS, DWG. & LIGHT FIXTURE SCHEDULE, E-002.00 & E-003.00 FOR ELECTRICAL SPECIFICATIONS.
- 2. CIRCUITING FOR LIGHTING FIXTURES IN ROOMS WITH TOGGLE SWITCHES SHALL BE CONTROLLED BY DESIGNATED SWITCHES. IF SPECIFIC DESIGNATION IS NOT INDICATED, ALL LIGHTING FIXTURES IN ROOM/AREA SHALL BE CONTROLLED BY THE SWITCH INDICATED.
- 3. PROVIDE EXIT LIGHT AT 2ND FLOOR EXIT AND CONNECT TO LOCAL PANEL.

**1** **GROUND FLOOR LIGHTING PLAN**  
SCALE: 1/4"=1'-0"



**1 GROUND FLOOR ELECTRICAL POWER PLAN**  
SCALE: 1/4"=1'-0"



**2 ROOF ELECTRICAL PARTIAL POWER PLAN**  
SCALE: 1/8"=1'-0"

**KEYED WORK NOTES:**

- 1 EXISTING 36 POLES CLEAN ROOM PANEL "PP-2". CONTRACTOR TO FIELD VERIFY EXACT LOCATION OF EXISTING PANEL.
- 2 ALL SECURITY CAMERA'S ARE MOUNTED HIGH AND LOCATION TO BE CONFIRMED ON SITE.

**POWER DRAWING NOTES:**

- 1. ALL BRANCH CIRCUITS HOMERUNS ASSIGN INDICATED ON THIS PLAN SHALL BE CIRCUITED TO PANEL PP-1". CIRCUIT NUMBER INDICATED, U.O.N.
- 2. REFER TO DWG. E-001.00 FOR ELECTRICAL GENERAL NOTES, SYMBOL LIST & ABBREVIATIONS. E-002 & E-003 FOR ADDITIONAL ELECTRICAL SPECIFICATIONS.
- 3. ALL RECEPTACLES HEIGHT TO BE CO-ORDINATED WITH ARCHITECTURAL DRAWING.
- 4. DEDICATED OUTLET FOR EXISTING FREEZER IS IN CONFLICT WITH NEW COMPRESSOR ROOM. OUTLET SHALL BE RELOCATED OUTSIDE THE ROOM AS SHOWN.