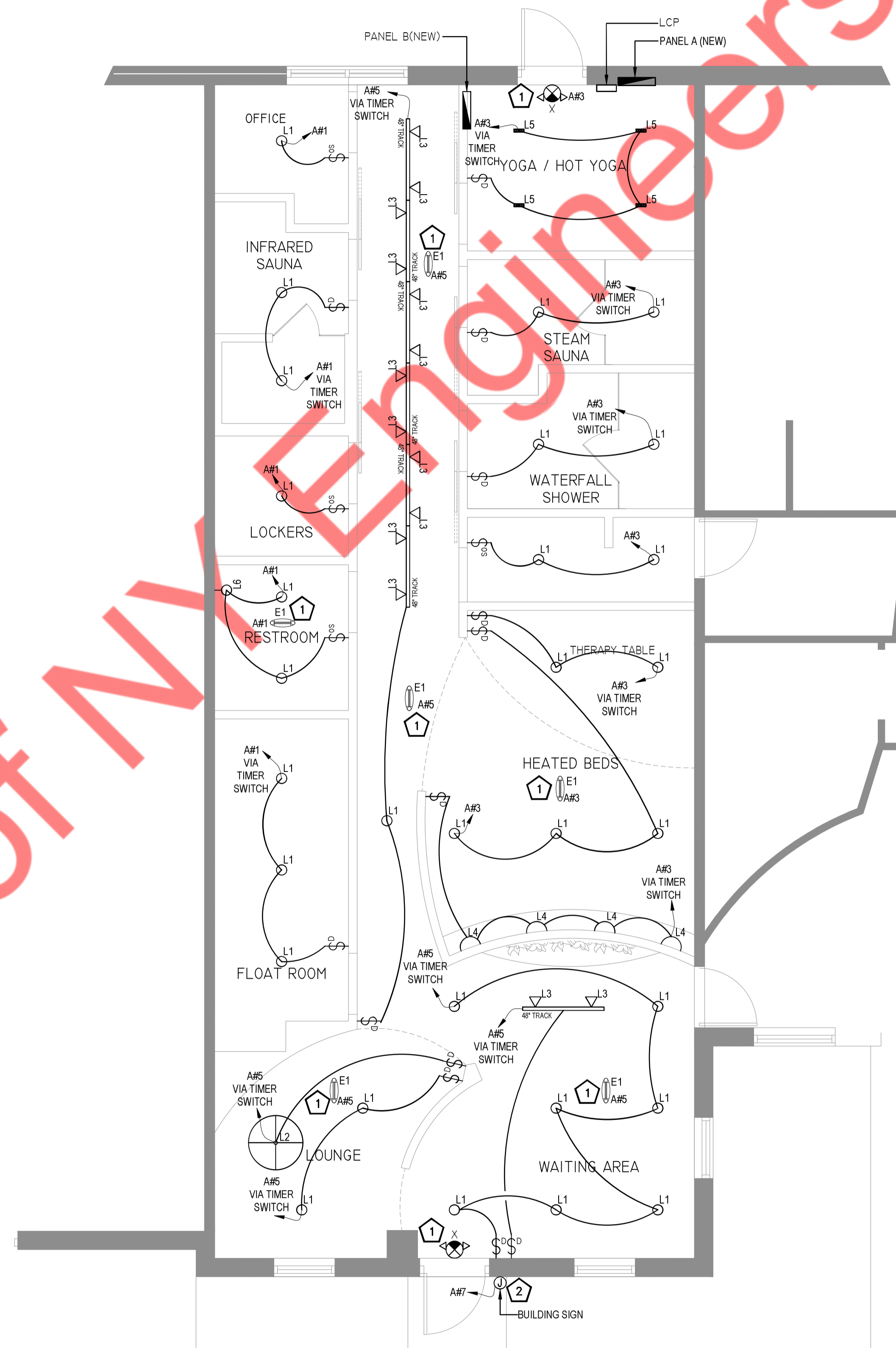
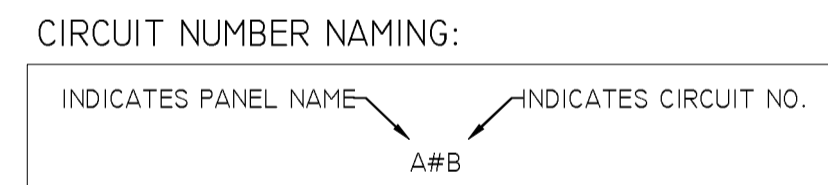
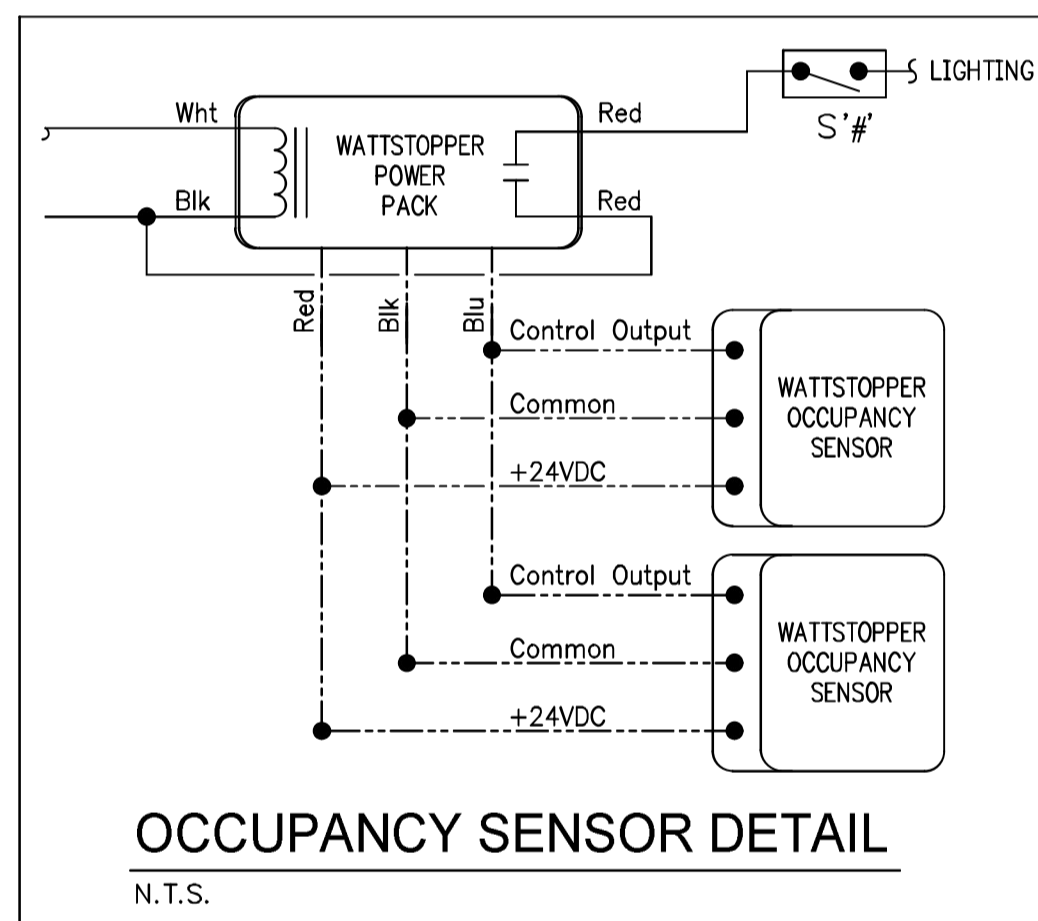


LIGHTING SCHEDULE				
CODE	DESCRIPTION	MANUFACTURER	PRODUCT	REMARK
INTERIOR				
L1	6" RECESSED DOWNLIGHT	LOTUS	TP120-347-RT6-C-DIM-GI-ES	
L2	CHERRY BLOSSOM PENDANTS	LIGHTART	ART-CRYB-PEND	
L3	3" TRACKHEAD	VERROZA	P-S-21-30-830-W-P	MOUNTING HEIGHT @ 7'-0" A.F.F
L4	WALL SCONCE	T.B.D.	T.B.D.	
L5	LINEAR DOWNLIGHT	T.B.D.	T.B.D.	MOUNTING HEIGHT @ 7'-0" A.F.F
L6	WALL SCONCE	SATCO	NUVO 62-1483	MOUNTING HEIGHT @ 7'-0" A.F.F
X	COMBO EXIT EMERGENCY	EXIT LIGHT CO	ELCCOMB02-G	
E1	EMERGENCY WALL PACK	EXIT LIGHT CO	EL-2	
LIGHTING SCHEDULE NOTES				
1. PROVIDE ALL FIXTURES COMPLETE WITH LAMPS.				
2. PROVIDE HOLD-DOWN CLIPS FOR EACH CORNER OF LED GRID TROFFERS.				
3. COORDINATE AND VERIFY ALL FIXTURE INFORMATION, TYPE AND FINAL LOCATIONS WITH THE REFLECTED CEILING PLAN.				
4. PROVIDE ALL REQUIRED MOUNTING OR HANGING HARDWARE.				
5. ALL SUSPENDED FIXTURES AND SURFACE OR RECESSED FIXTURES IN SOFFITS/CEILINGS PAINTED [XX-XX] SHALL HAVE BLACK TRIM IN LIEU OF WHITE.				

NOTE:
E.C.TO COORDINATE WITH ARCHITECT/OWNER FOR FINAL SELECTION, WATTAGES AND QUANTITY OF LIGHTING FIXTURE.

LIGHTING PLAN - GENERAL NOTES	
1.	FOR EXACT LIGHTING FIXTURE DETAILS AND SELECTIONS COORDINATE WITH ARCHITECT/OWNER.

LIGHTING PLAN - KEYED WORK NOTES	
1.	CONNECT ALL EMERGENCY AND EGRESS LIGHTING FIXTURES TO THE NEAREST LIGHTING BRANCH CIRCUIT AHEAD OF ALL SWITCHING AND CONTROLS PER STATE AND LOCAL CODES.
2.	JUNCTION BOX FOR STORE FRONT BUILDING SIGN. E.C TO COORDINATE WITH ARCHITECT/SIGN VENDOR FOR EXACT LOCATION, MOUNTING HEIGHT AND ELECTRICAL REQUIREMENT FOR BUILDING SIGN.



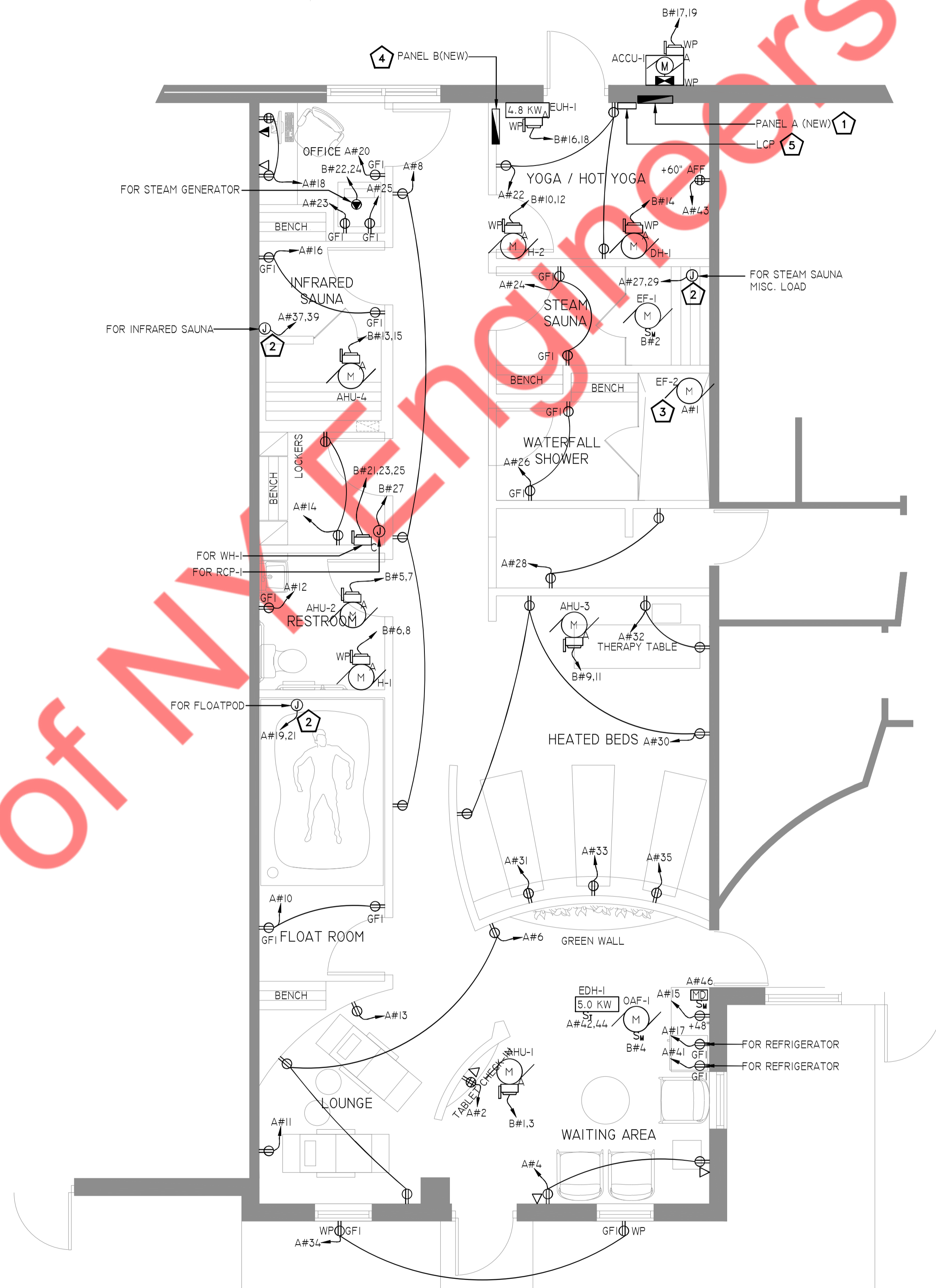
POWER PLAN - GENERAL NOTES

1. ALL 120V, 15A AND 20A RECEPTACLES IN KITCHEN AREA SHALL BE "GFCI" IN ACCORDANCE WITH NEC ARTICLE 210.8(B). PROVIDE GFI RATED BREAKER AT PANEL FOR KITCHEN EQUIPMENT.
2. VERIFY MOUNTING HEIGHTS OF ALL RECEPTACLES WITH EQUIPMENT SUPPLIED PRIOR TO INSTALLATION.
3. E.C. TO PROVIDE CORD & PLUG CONNECTIONS FOR EQUIPMENT AS REQUIRED.
4. EACH RECEPTACLE TYPE (LOCKING OR STRAIGHT BLADE) SHALL MATCH THAT OF THE EQUIPMENT FURNISHED.
5. E.C. TO COORDINATE WITH ARCHITECT/OWNER FOR EXACT LOCATION AND ALL THE ELECTRICAL REQUIREMENTS FOR THE SPECIAL EQUIPMENTS.

POWER PLAN - KEYED WORK NOTES

1. NEW 400A, 120/208V, 3-PHASE ELECTRICAL PANEL "A" FOR THE SPACE. E.C SHALL TO COORDINATE WITH ARCHITECT/OWNER FOR EXACT LOCATION OF PANEL "A" IN FIELD.
2. E.C. TO COORDINATE WITH ARCHITECT/EQUIPMENT MANUFACTURER FOR ELECTRICAL REQUIREMENT OF FINAL SELECTION.
3. REST ROOM EXHAUST FAN EF-2 SHALL BE CIRCUITED AND CONTROLLED ALONG WITH THE LIGHTING FIXTURE IN THE REST ROOM.
4. NEW 200A, 120/208V, 3-PHASE ELECTRICAL PANEL "B" FOR THE SPACE. E.C SHALL TO COORDINATE WITH ARCHITECT/OWNER FOR EXACT LOCATION OF PANEL "B" IN FIELD.
5. NEW LIGHTING CONTACTOR PANEL LCP FOR THE SPACE. E.C SHALL COORDINATE WITH ARCHITECT/OWNER FOR EXACT LOCATION OF LCP IN FIELD.

CIRCUIT NUMBER NAMING:



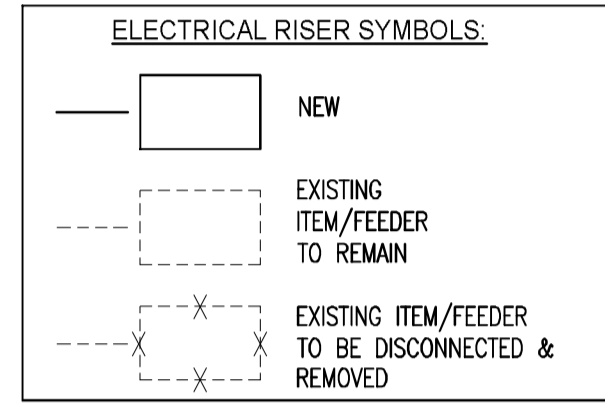
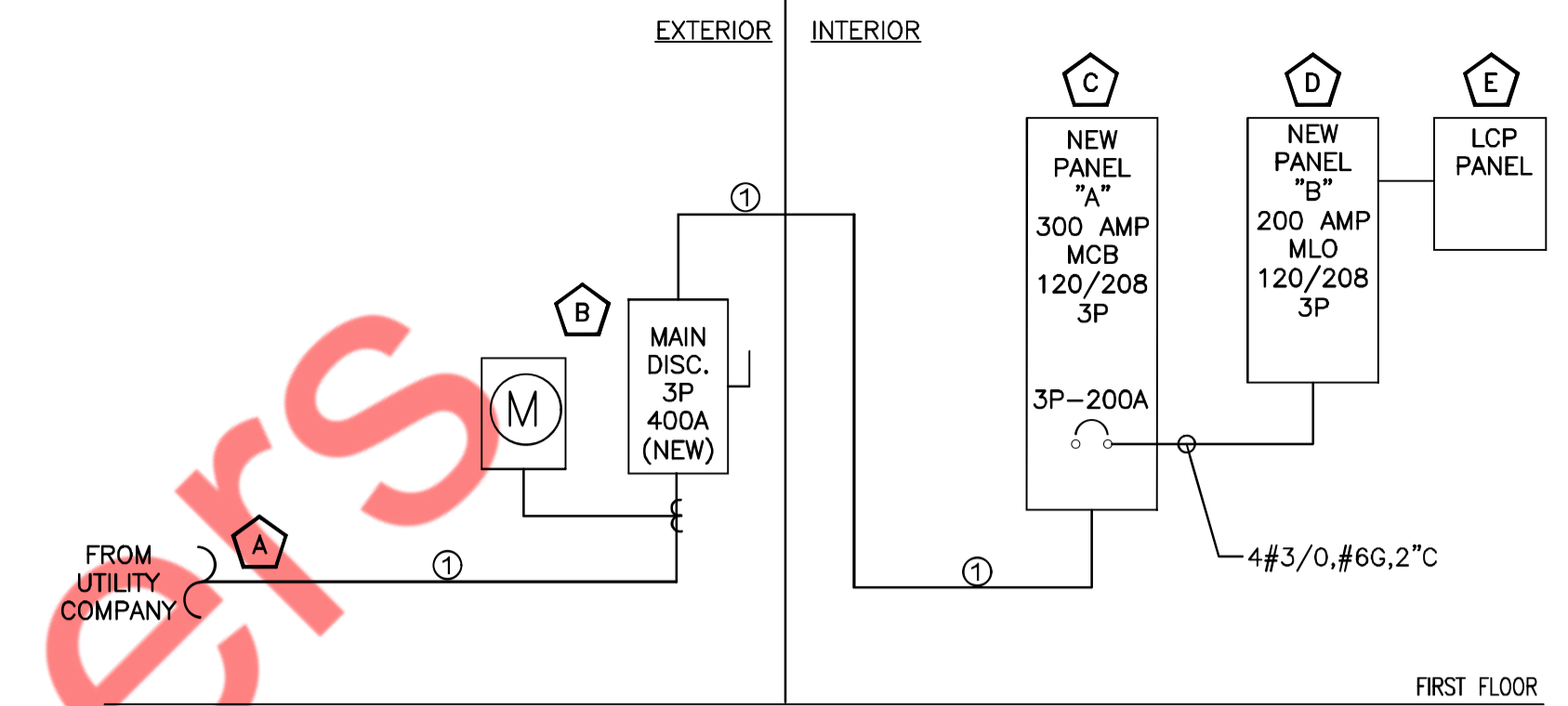
PANEL: A (NEW)												MOUNTING: RECESSED		
208Y/120	VOLTS,	3	PHASE,	4	WIRE	PANEL LOCATION: YOGA ROOM								
MAIN CB:	300 A	MLO:	NA	BUS:	400 A	MIN,	FED FROM: MAIN EL SERVICE							
NOTE:														
CKT NO.	TRIP AMPS	DESCRIPTION OF LOAD	LOAD TYPE	LOAD (KVA)	MINIMUM BRANCH CIRCUIT	PER PHASE (KVA)			MINIMUM BRANCH CIRCUIT	LOAD (KVA)	LOAD TYPE	DESCRIPTION OF LOAD	TRIP AMPS	CKT NO.
						A	B	C						
1	20	LTG- FLOAT ROOM, REST ROOM, LOCKERS, IR SAUNA, OFFICE, EF-2	L	0.60	2#12, #12G, 3/4"C	0.96			2#12, #12G, 3/4"C	0.36	R	RECEPTACLE- CHECK IN TABLE	20	2
3	20	LTG- HEATED BEDS, WATERFALL SHOWER, STEAM SAUNA, YOGA	L	0.50	2#12, #12G, 3/4"C		0.86		2#12, #12G, 3/4"C	0.36	R	RECEPTACLE- WAITING AREA	20	4
5	20	LTG- LOUNGE, WAITING AREA, CORRIDOR	L	0.50	2#12, #12G, 3/4"C			1.04	2#12, #12G, 3/4"C	0.54	R	RECEPTACLE- LOUNGE/WAITING AREA GENERAL	20	6
7	20	EXTERNAL BUILDING SIGNAGE	L	0.60	2#12, #12G, 3/4"C	1.14			2#12, #12G, 3/4"C	0.54	R	RECEPTACLE- CORRIDOR	20	8
9	20	LIGHTING CONTACTOR PANEL (LCP)	L	1.00	2#12, #12G, 3/4"C		1.36		2#12, #12G, 3/4"C	0.36	R	RECEPTACLE- FLOAT ROOM	20	10
11	20	INFRARED HEATED CHAISE LOUNGE	E	0.95	2#12, #12G, 3/4"C			1.13	2#12, #12G, 3/4"C	0.18	R	GFI RECEPTACLE- REST ROOM	20	12
13	20	INFRARED HEATED CHAISE LOUNGE	E	0.95	2#12, #12G, 3/4"C	1.31			2#12, #12G, 3/4"C	0.36	R	RECEPTACLE- LOCKER ROOM	20	14
15	20	CONVENIENCE RECEPTACLE	R	0.50	2#12, #12G, 3/4"C		0.86		2#12, #12G, 3/4"C	0.36	R	GFI RECEPTACLE- INFRARED SAUNA	20	16
17	20	REFRIGERATOR-1	E	1.00	2#12, #12G, 3/4"C			1.54	2#12, #12G, 3/4"C	0.54	R	RECEPTACLE- OFFICE	20	18
19	2P-20A	FLOATPOD	E	1.50	2#12, #12G, 3/4"C	1.68			2#12, #12G, 3/4"C	0.18	R	GFI RECEPTACLE- OFFICE	20	20
21			E	1.50									2.04	2#12, #12G, 3/4"C
23	20	DRYER	E	1.44	2#12, #12G, 3/4"C			0.54	2#12, #12G, 3/4"C	0.36	R	GFI RECEPTACLE- STEAM SAUNA	20	24
25	20	WASHER	E	0.18	2#12, #12G, 3/4"C	0.54			2#12, #12G, 3/4"C	0.36	R	GFI RECEPTACLE- WATERFALL SHOWER	20	26
27	2P-20A	STEAM SAUNA	E	1.00	2#12, #12G, 3/4"C		1.36		2#12, #12G, 3/4"C	0.36	R	RECEPTACLE- PASSAGE	20	28
29			E	1.00									1.49	2#12, #12G, 3/4"C
31	20	HEATED CHAIR	E	0.95	2#12, #12G, 3/4"C	1.31			2#12, #12G, 3/4"C	0.36	R	RECEPTACLE- HEATED BEDS (THERAPY TABLE)	20	32
33	20	HEATED CHAIR	E	0.95	2#12, #12G, 3/4"C		1.31		2#12, #12G, 3/4"C	0.36	R	EXTERIOR RECEPTACLE	20	34
35	20	HEATED CHAIR	E	0.95	2#12, #12G, 3/4"C			20.04						36
37	2P-30A	INFRARED SAUNA	E	3.00	2#10, #10G, 3/4"C	20.04			4#3/0, #6G, 2"C	17.04	O	PANEL B	3P-200A	38
39			E	3.00									20.04	17.04
41	20	REFRIGERATOR-2	E	1.00	2#12, #12G, 3/4"C			2.86	2#10, #10G, 3/4"C	2.50	H	EDH-1	2P-30A	42
43	20	YOGA ROOM-QUAD RECEPTACLE	R	0.36	2#12, #12G, 3/4"C	2.86				2.50	H			44
45	20	SPARE							2#12, #12G, 3/4"C	0.20	H	MOTORISED DAMPER (MD)	20	46
47	20	SPARE											20	48
49	20	SPARE				0.00							20	50
51	20	SPARE					0.00						20	52
53	20	SPARE						0.00					20	54
TOTAL CONNECTED LOAD (KVA)						29.84	28.03	28.64						

PANEL: B (NEW)												MOUNTING: RECESSED		
208Y/120	VOLTS,	3	PHASE,	4	WIRE	PANEL LOCATION: YOGA ROOM								
MAIN CB:	NA	MLO:	200 A	BUS:	225A	MIN,	FED FROM: PANEL A							
NOTE:														
CKT NO.	TRIP AMPS	DESCRIPTION OF LOAD	LOAD TYPE	LOAD (KVA)	MINIMUM BRANCH CIRCUIT	PER PHASE (KVA)			MINIMUM BRANCH CIRCUIT	LOAD (KVA)	LOAD TYPE	DESCRIPTION OF LOAD	TRIP AMPS	CKT NO.
						A	B	C						
1	2P-15A	AC INDOOR UNIT (AHU-1)	H	0.30	2#12, #12G, 3/4"C	0.40			2#12, #12G, 3/4"C	0.10	M	EF-1	20	2
3			H	0.30			0.42		2#12, #12G, 3/4"C	0.12	M	OAF-1	20	4
5	2P-15A	AC INDOOR UNIT (AHU-2)	H	0.22	2#12, #12G, 3/4"C			1.88	2#12, #12G, 3/4"C	1.65	H	HUMIDIFIER (H-1)	2P-20A	6
7			H	0.22		1.88		1.65	H		8			
9	2P-15A	AC INDOOR UNIT (AHU-3)	H	0.31	2#12, #12G, 3/4"C		1.96		2#12, #12G, 3/4"C	1.65	H	HUMIDIFIER (H-2)	2P-20A	10
11			H	0.31			1.96	1.65	H		12			
13	2P-15A	AC INDOOR UNIT (AHU-4)	H	0.18	2#12, #12G, 3/4"C	0.52			2#12, #12G, 3/4"C	0.34	H	DEHUMIDIFIER (DH-1)	20	14
15			H	0.18			2.58		2.40	H		16		
17	2P-50A	AC OUTDOOR UNIT (ACCU-1)	H	3.74	2#8, #10G, 3/4"C			6.14	2#12, #12G, 3/4"C	2.40	H	ELECTRIC UNIT HEATER (EUH-1)	2P-30A	18
19			H	3.74		4.74		2.40	H		20			
21	3P/100A	WATER HEATER (WH-1)	O	8.00	3#3 + 1#8G, 11/4"C		10.25		2#10, #10G, 3/4"C	2.25	H	STEAM GENERATOR	2P-30A	22
23			O	8.00			10.25	2.25	H		24			
25			O	8.00		8.00						26		
27	20	RECIRCULATING PUMP (RCP-1)	M	0.15	2#12, #12G, 3/4"C		0.15					SPARE	20	28
29	20	SPARE						0.00				SPARE	20	30
TOTAL CONNECTED LOAD (KVA)						15.54	15.36	20.23						

PANEL SCHEDULE GENERAL NOTES

A. ALL CIRCUITING SHOWN IS FOR REFERENCE PURPOSE ONLY. E.C. SHALL UPDATE THE CIRCUITING IF REQUIRED PER EQUIPMENT SELECTION/MANUFACTURER REQUIREMENTS IN FIELD AND INFORM ENGINEER FOR ANY DISCREPANCIES.

NEW 400A: 4-600KCM, 1-#3CU GND, IN 3 1/2" CONDUIT



- ELECTRICAL RISER KEYED WORK NOTES:**
- # NEW 400 AMPS, 120/208V, 3-PHASE SERVICE FOR THE SPACE. E.C. TO COORDINATE WITH OWNER/UTILITY COMPANY FOR MORE DETAILS. E.C. SHALL FIELD VERIFY AND APPLY TO UTILITY COMPANY FOR POWER AND METER REQUIRED FOR THE SPACE. E.C. SHALL VERIFY INCOMING SERVICE AMPERAGE, WIRE SIZING AND DISTRIBUTION. BASE BID ACCORDINGLY. INFORM ENGINEER FOR ANY DISCREPANCY PRIOR COMMENCING ANY WORK.
 - A NEW 400 AMPS, 120/208V, 3-PHASE CT METER CABINET AND SERVICE DISCONNECT SWITCH FOR THE SPACE. E.C. TO COORDINATE WITH OWNER/UTILITY COMPANY FOR LOCATION.
 - B NEW 400A, 120/208V, 3-PHASE ELECTRICAL PANEL "A" WITH MCB OF 300A FOR THE PROJECT SPACE. E.C. SHALL COORDINATE WITH ARCHITECT/ OWNER FOR EXACT LOCATION OF PANEL "A" IN FIELD.
 - C NEW 200A, 120/208V, 3-PHASE ELECTRICAL PANEL "B" FOR THE PROJECT SPACE. E.C. SHALL COORDINATE WITH ARCHITECT/ OWNER FOR EXACT LOCATION OF PANEL "B" IN FIELD.
 - D NEW LIGHTING CONTACTOR PANEL. E.C. TO COORDINATE WITH ARCHITECT/OWNER FOR EXACT LOCATION OF LIGHTING CONTACTOR PANEL IN FIELD.

- RISER GENERAL NOTES:**
1. E.C. SHALL VERIFY INCOMING SERVICE AMPERAGE, WIRE SIZING AND DISTRIBUTION.
 2. ELECTRICAL CONTRACTOR TO COORDINATE FAULT CURRENT (ISC) RATING WITH UTILITY COMPANY AND AHJ PRIOR TO COMMENCING ANY WORK.
 3. PROVIDE SEPARATE GROUND CONDUCTOR IN ALL CONDUITS.
 4. PROVIDE HACR TYPE CIRCUIT BREAKERS FOR MECHANICAL ROOFTOP UNITS AND FOR THE WALK-IN COOLER COMPRESSOR AND WALK-IN FREEZER COMPRESSOR.
 5. P.O.S. SYSTEM, COMPUTER, PRINTERS, MONITORS, CREDIT CARDS AND MODEM TO BE ON ISOLATED GROUND.