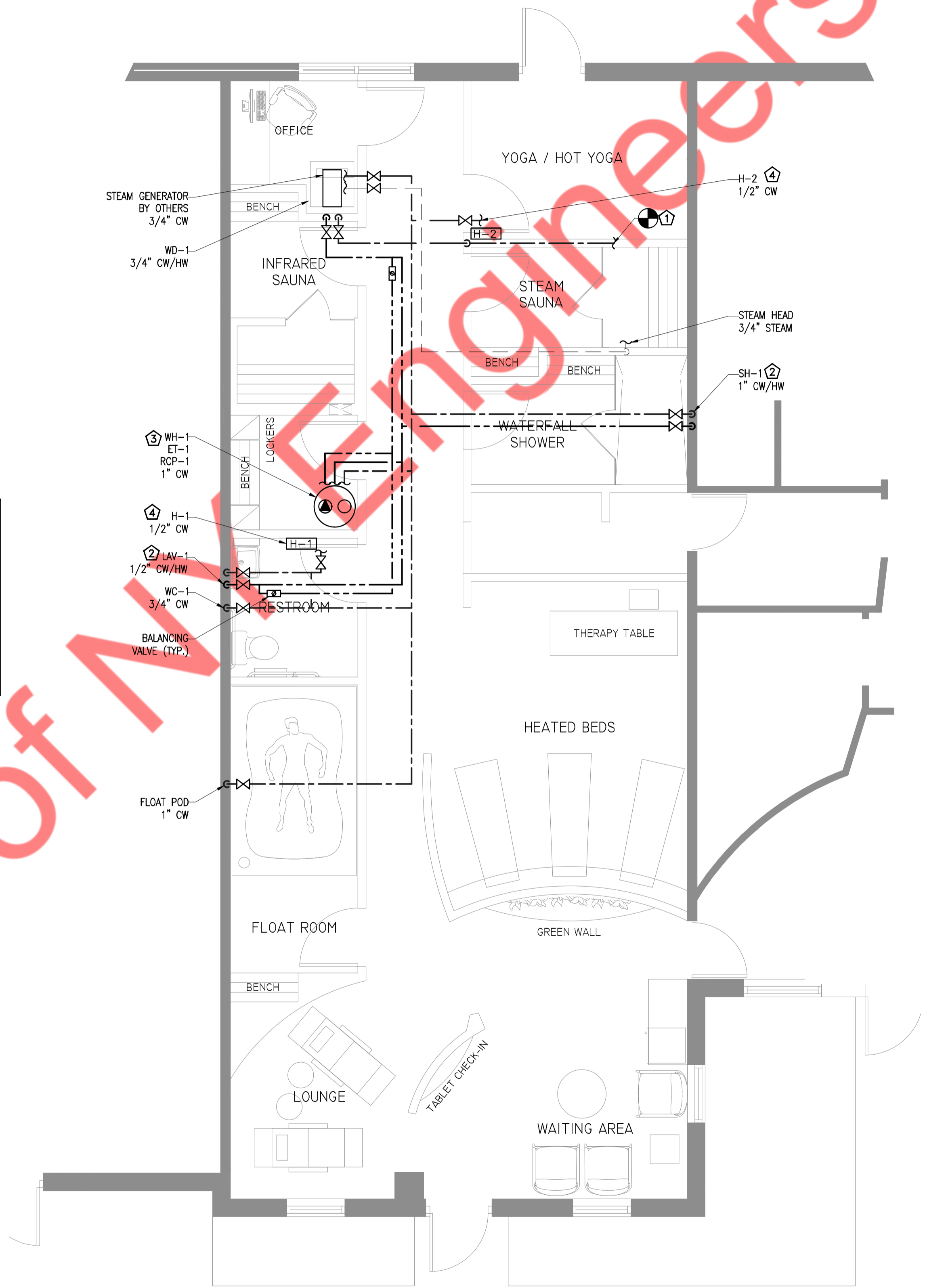


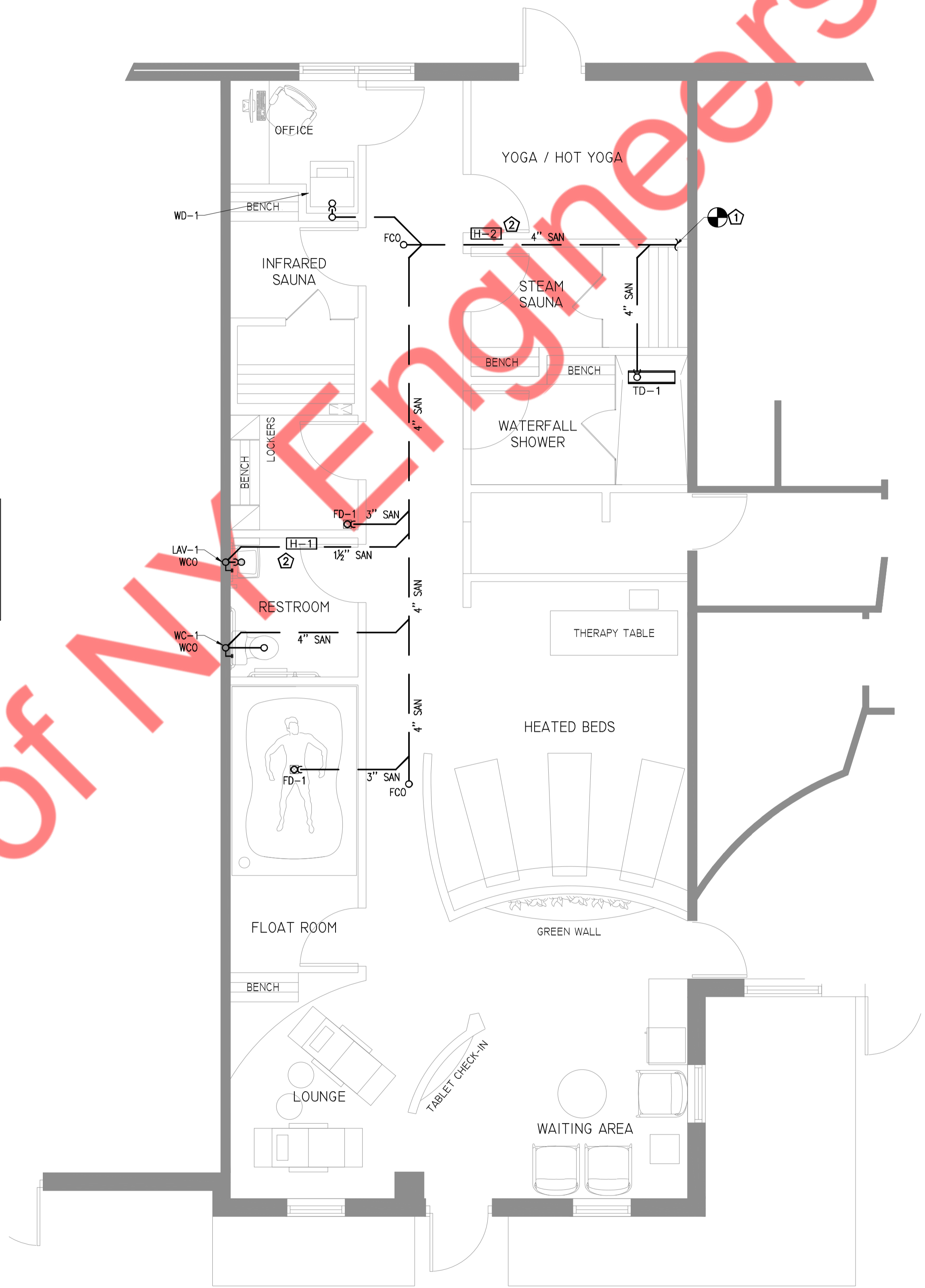
- DOMESTIC WATER AND STEAM PIPING PLAN KEYED NOTES:**
- ① EXTEND AND CONNECT NEW 1-1/2" CW PIPING TO 1" EXISTING CW MAIN IN THE TENANT SPACE. CONTRACTOR TO VERIFY IN FIELD AND PROVIDE BACKFLOW PREVENTER AND WATER METER AS PER LOCAL REGULATIONS.
 - ② PROVIDE THERMOSTATIC MIXING VALVES AT ALL LAVATORIES AND SHOWERS. SET AT 110° F MAX.
 - ③ ELECTRIC STORAGE TANK WATER HEATER SHALL BE MOUNTED ON PLATFORM AS PER MANUFACTURER'S INSTRUCTIONS. CO-ORDINATE WITH STRUCTURAL ENGINEER FOR WATER HEATER MOUNTING REQUIREMENT.
 - ④ PROVIDE ASSE 1012 COMPLIANT BACKFLOW PREVENTER FOR HUMIDIFIERS.



Property of MFE Engineers

SANITARY PIPING PLAN KEYED NOTES:

- ① EXTEND AND CONNECT NEW 4" SANITARY PIPING TO EXISTING 4" SANITARY MAIN IN THIS AREA. CONTRACTOR TO VERIFY IN FIELD EXACT SIZE AND LOCATION AND INVERT ON SITE.
- ② CONDENSATE DRAIN FROM HUMIDIFIER DISCHARGE TO NEAREST PLUMBING FIXTURE WITH APPROVED AIR GAP.



H1 FLOOR PLAN - SANITARY

SCALE: 1/4" = 1'-0"

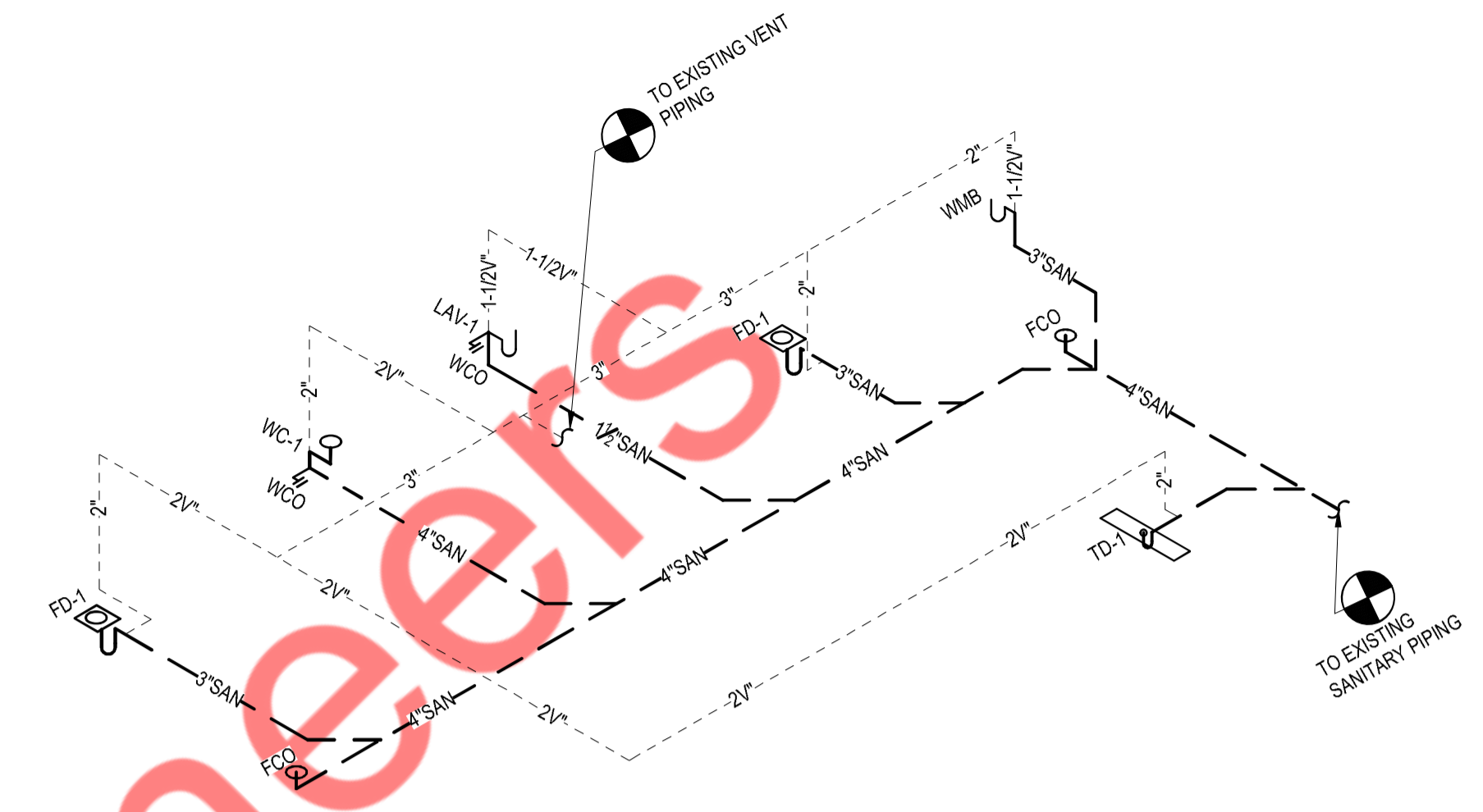
PLUMBING FIXTURE SCHEDULE								
LEGEND	PLUMBING FIXTURE	CONNECTION SIZE - INCHES						REMARKS
		TRAP	SOIL/WASTE	VENT	COLD WATER	HOT WATER	THERMOSTATIC MIXING VALVE	
WC-1	WATER CLOSET	-	4"	2"	3/4"	-	-	FLUSH TANK
LAV-1	LAVATORY	1 1/2"	1 1/2"	1 1/2"	1/2"	1/2"	PROVIDE	P-TRAP
WD-1	WASHER DRYER	1 1/2"	1 1/2"	1 1/2"	3/4"	3/4"	-	I.W. FROM WD-1 SPILLS INTO FLOOR DRAIN
SH-1	SHOWER	3"	3"	2"	1"	1"	PROVIDE	P-TRAP
FS-1	FLOOR SINK	3"	3"	2"	-	-	-	P-TRAP
FD-1	FLOOR DRAIN	3"	3"	2"	-	-	-	P-TRAP
TD-1	TRENCH DRAIN	3"	3"	2"	-	-	-	P-TRAP

NOTE: CONTRACTOR TO COORDINATE WITH ARCHITECTURAL DRAWINGS FOR ALL PLUMBING FIXTURES SPECIFICATIONS AND MOUNTING HEIGHT INSTALLATION.

HOT WATER HEATER											
TAG No.	NO. OF ELEMENTS	FIXTURES SERVING	STORAGE GALLONS	RECOVERY CAP. (GPM @ RISE)	TYPE	ELECTRICAL				MANUFACTURER & MODEL NO.	REMARKS
						VOLTS	PHASE	HERTZ	INPUT KW		
WH-1	6	LAVATORY, WASHER, SHOWER	80	98 GPM @ 100°F	ELECTRIC WATER HEATER	208	3	60	24	A.O.SMITH DRE-80-24 (GOLD SERIES)	-DIMENSIONS 25.5"DIA X 60.25"H -EMPTY WEIGHT: 280 LBS -LOADED WEIGHT: 948 LBS -HEATERS SHALL HAVE 150PSI WORKING PRESSURE.

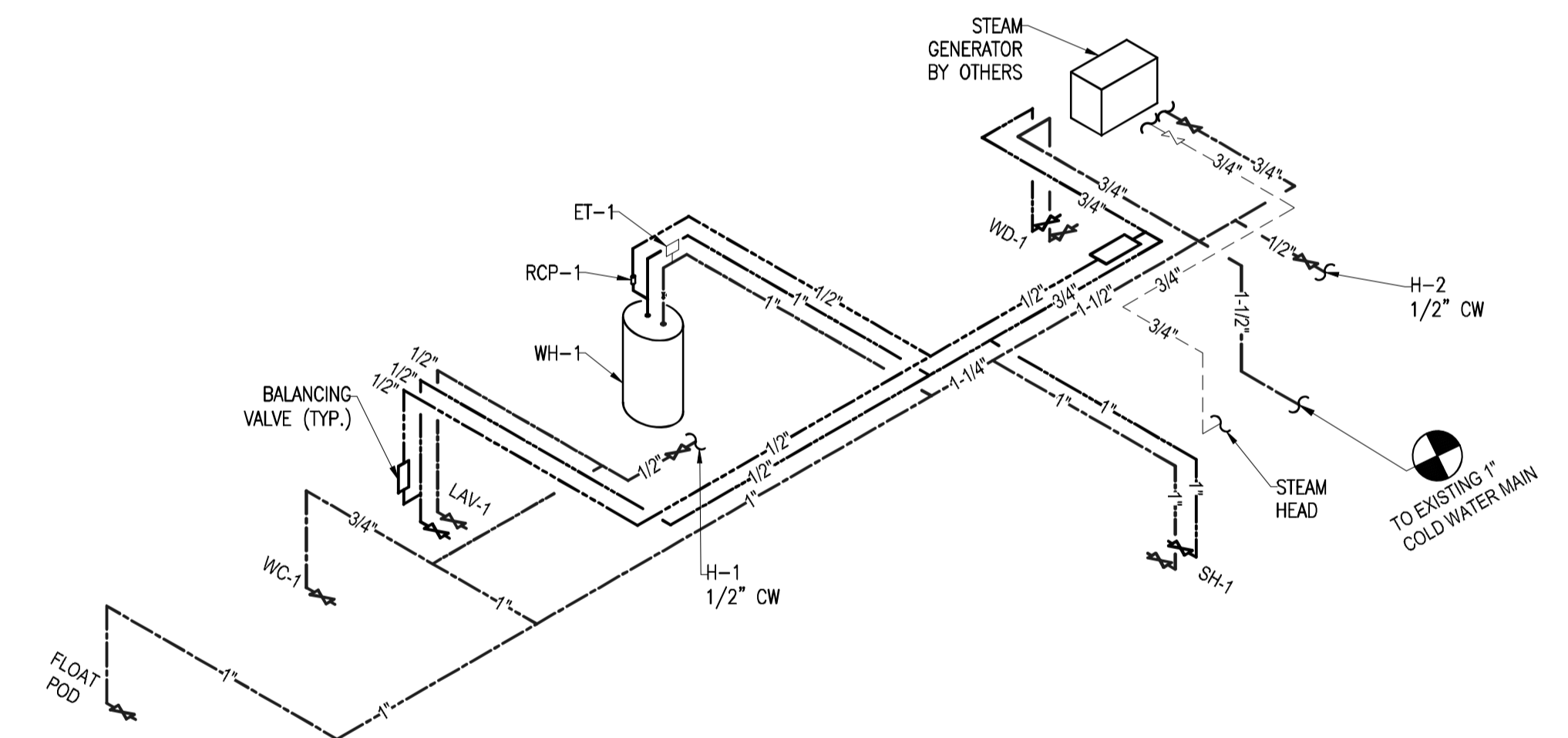
RECIRCULATING PUMP SCHEDULE					
MARK	SERVICE	GPM	TOTAL HEAD FT.	MOTOR HP	MANUFACTURER & REMARKS
RCP-1	HW RECIRCULATION	2	10	0.115	GRUNDFOS UPS 15-18 BUC5 W/AQUASTAT + TIMER

EXPANSION TANK SCHEDULE				
ITEM	SERVICE	GALLONS	MAKE	REMARKS
EXPANSION TANK (ET-1)	HOT WATER	4.4	AMTROL ST-12	DIMENSIONS- 15"(H)x11"(DIA.) SHIPPING WEIGHT- 9 LBS



L8 PLUMBING RISER-WASTE AND VENT

SCALE: NTS



L3 PLUMBING RISER-DOMESTIC WATER AND STEAM

SCALE: NTS