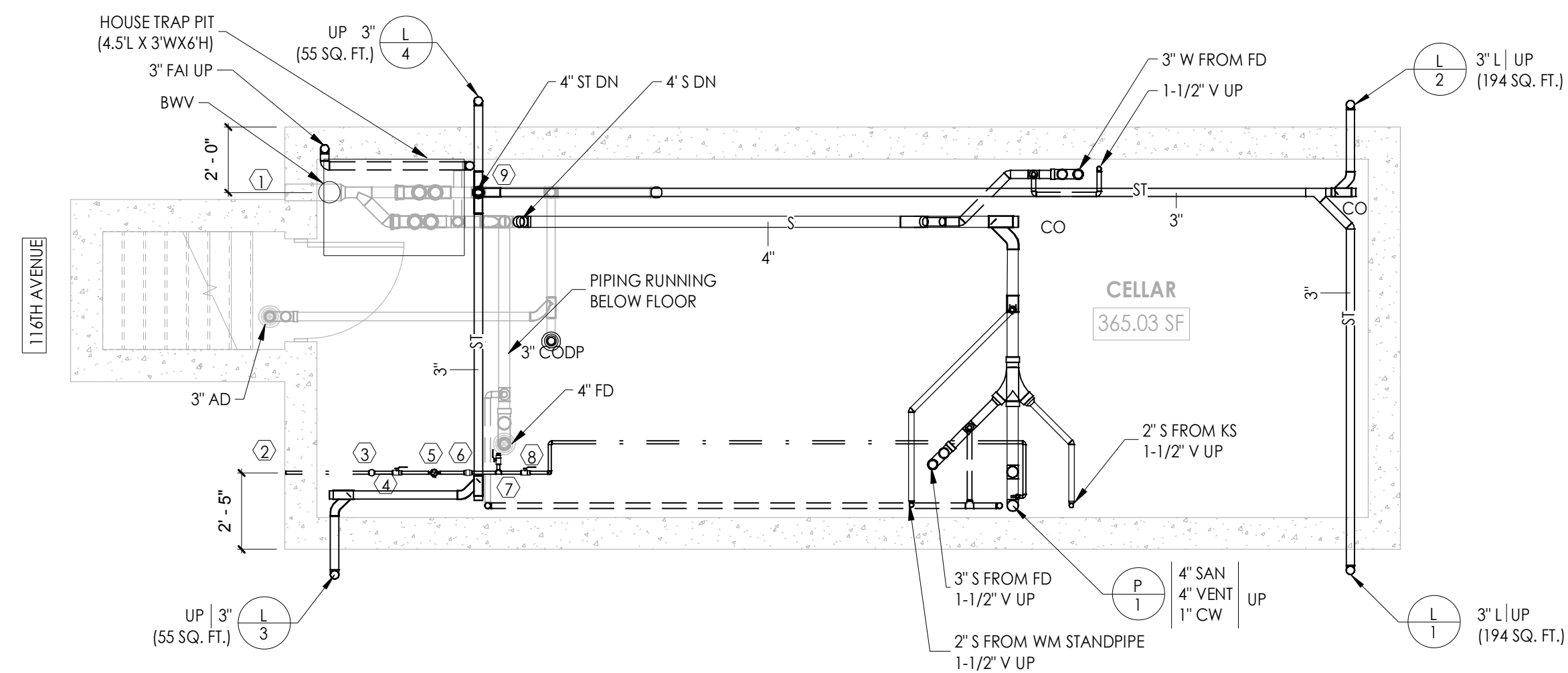


2 1ST FLOOR PLUMBING PLAN  
1/4" = 1'-0"



1 CELLAR FLOOR PLUMBING PLAN  
1/4" = 1'-0"

### DRYWELL CALCULATIONS

TOTAL STROM DISCHARGE TO DRYWELL

TOTAL LOT AREA = 2000 SQ. FT.

TOTAL AREA TO CITY SEWER= 498 SQ. FT.

TOTAL AREA TO DRYWELL= 1502 SQ. FT.

ASPHALT AREA FLOW Q= (370/43560) X 5.95 X 0.70= 0.0353 CFS

GRASS AREA FLOW Q= (1132/43560) X 5.95 X 0.2= 0.0309 CFS

TOTAL Q= 0.066 CFS

VOLUME BASED ON 3 - INCHES OF RAINFALL PER HOUR

VOL. OF DRYWELL REQ. FOR ASPHALT AREA= 370 X (30.0/12) = 64.75 CF

VOL. OF DRYWELL REQ. FOR GRASS AREA = 1132 X (30.0/12) = 56.6 CF

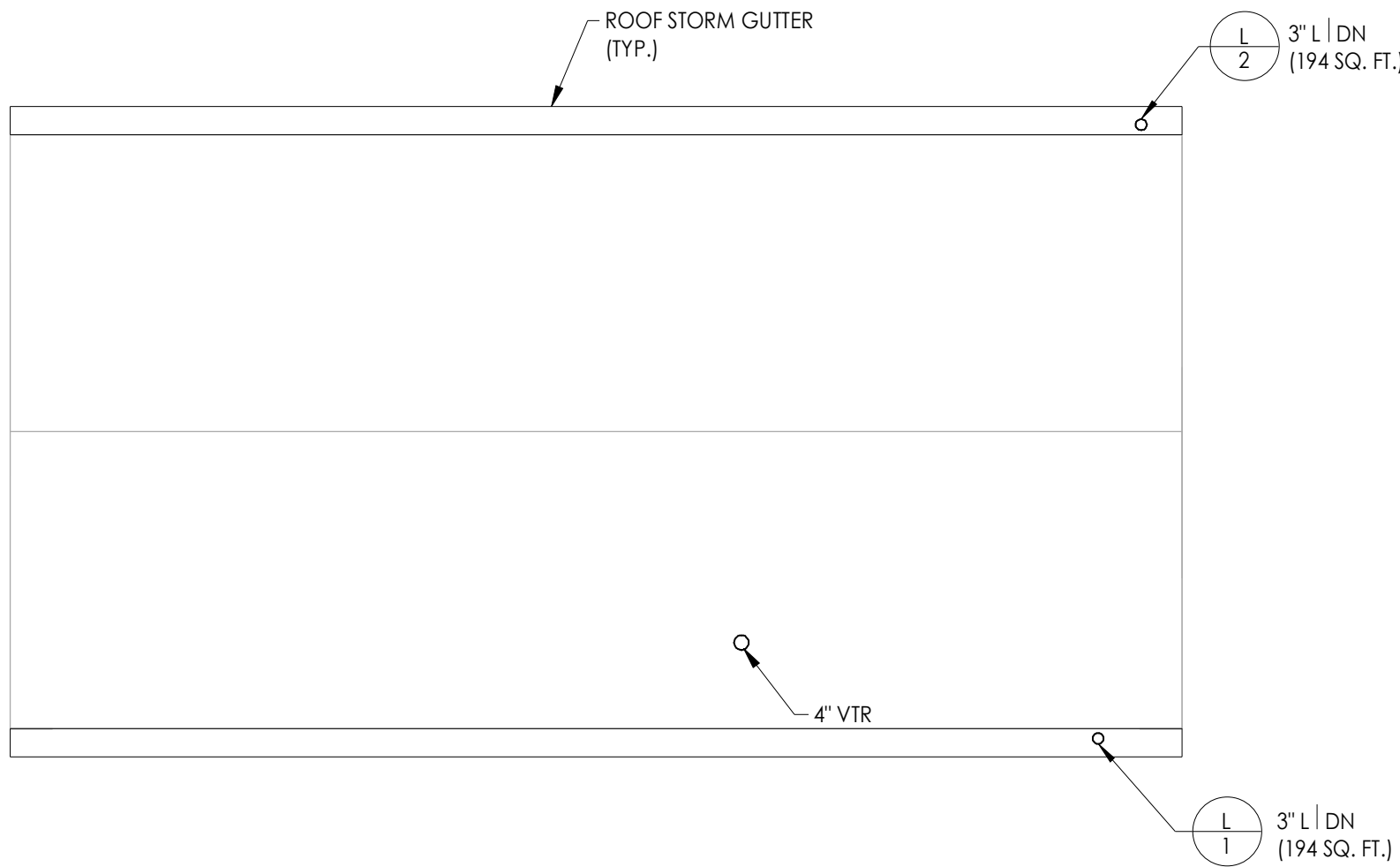
TOTAL VOLUME OF DRYWELL REQUIRED= 121.35 CF

PROVIDED DRYWELL VOLUME= 7' [D] 3.5' [H] = 134.69 CF

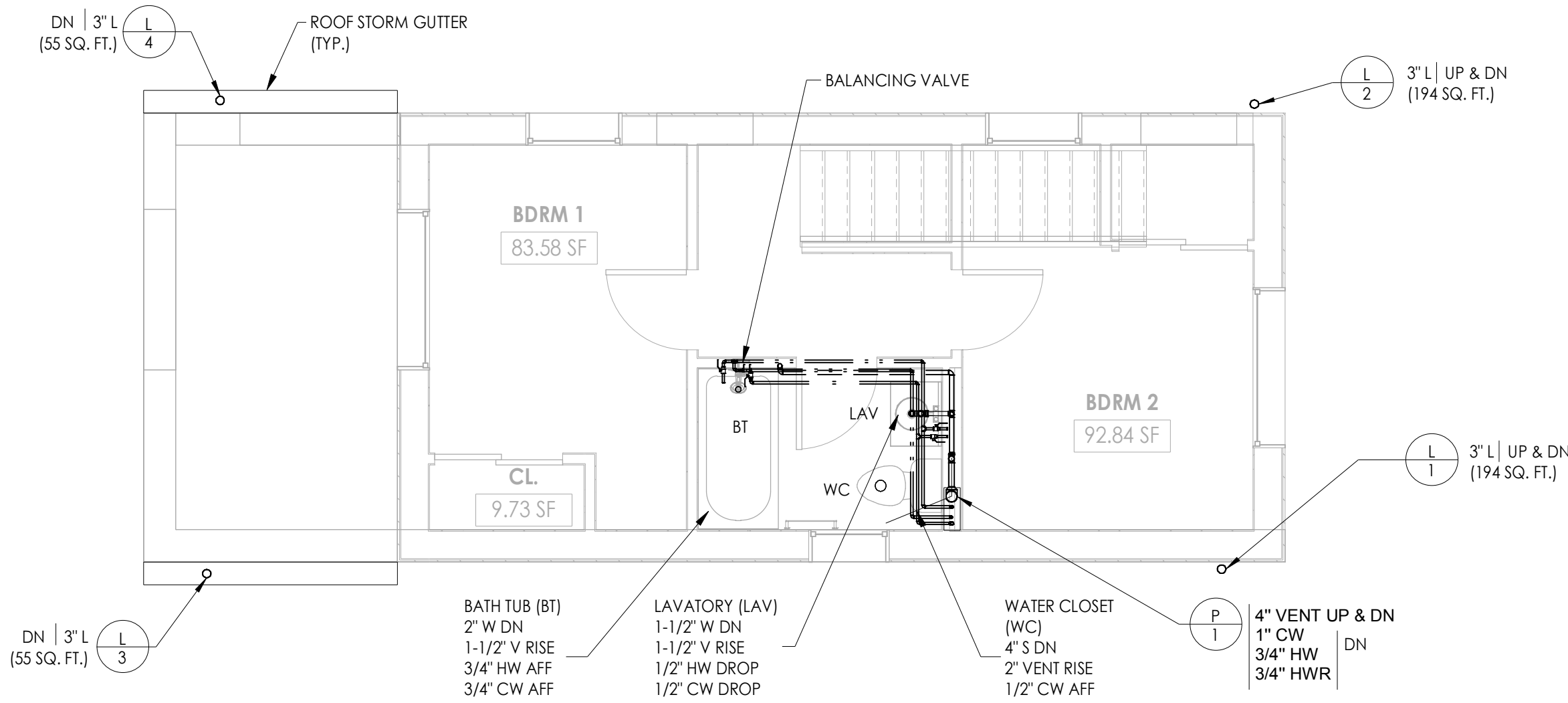
- ① 6" COMBINED SANITARY/STORM BUILDING SEWER
- ② 1" INCOMING DOMESTIC WATER SERVICE
- ③ 1" HCV VALVE
- ④ 1" DOMESTIC MIOV (QT VALVE)
- ⑤ NYC APPROVED DOMESTIC WATER METER W/REMOTE READER ENCODER
- ⑥ 1" CHECK VALVE
- ⑦ 1" TEST TEE CONNECTION W/VALVE
- ⑧ 1" DOMESTIC MOCV (QT VALVE)
- ⑨ 4" SANITARY HOUSE TRAP & 4" STORM HOUSE TRAP INSIDE PIT

### GENERAL NOTES

1. FOR ALL PIPE SIZES, REFER RISER DIAGRAMS.
2. ALL WATER PIPING SHOULD BE PROVIDED WITH INSULATION ACCORDING TO NYC- ECC AND NY-PC.
3. PROVIDE ELECTRONIC TRAP PRIMERS FOR ALL FLOOR DRAINS.
4. HW PIPE TO BE SIZED AS PER MAXIMUM PIPING LENGTH METHOD  
NYC ECC 2016 C404.5.1



2 ROOF PLUMBING PLAN  
1/4" = 1'-0"



1 2ND FLOOR PLUMBING PLAN  
1/4" = 1'-0"

- GENERAL NOTES
1. FOR ALL PIPE SIZES, REFER RISER DIAGRAMS.
  2. ALL WATER PIPING SHOULD BE PROVIDED WITH INSULATION ACCORDING TO NYC- ECC AND NYC-PC.
  3. PROVIDE ELECTRONIC TRAP PRIMERS FOR ALL FLOOR DRAINS.
  4. HW PIPE TO BE SIZED AS PER MAXIMUM PIPING LENGTH METHOD NYC ECC 2016 C404.5.1