



1 CELLAR LIGHTING PLAN  
1/8" = 1'-0"

GENERAL NOTE:

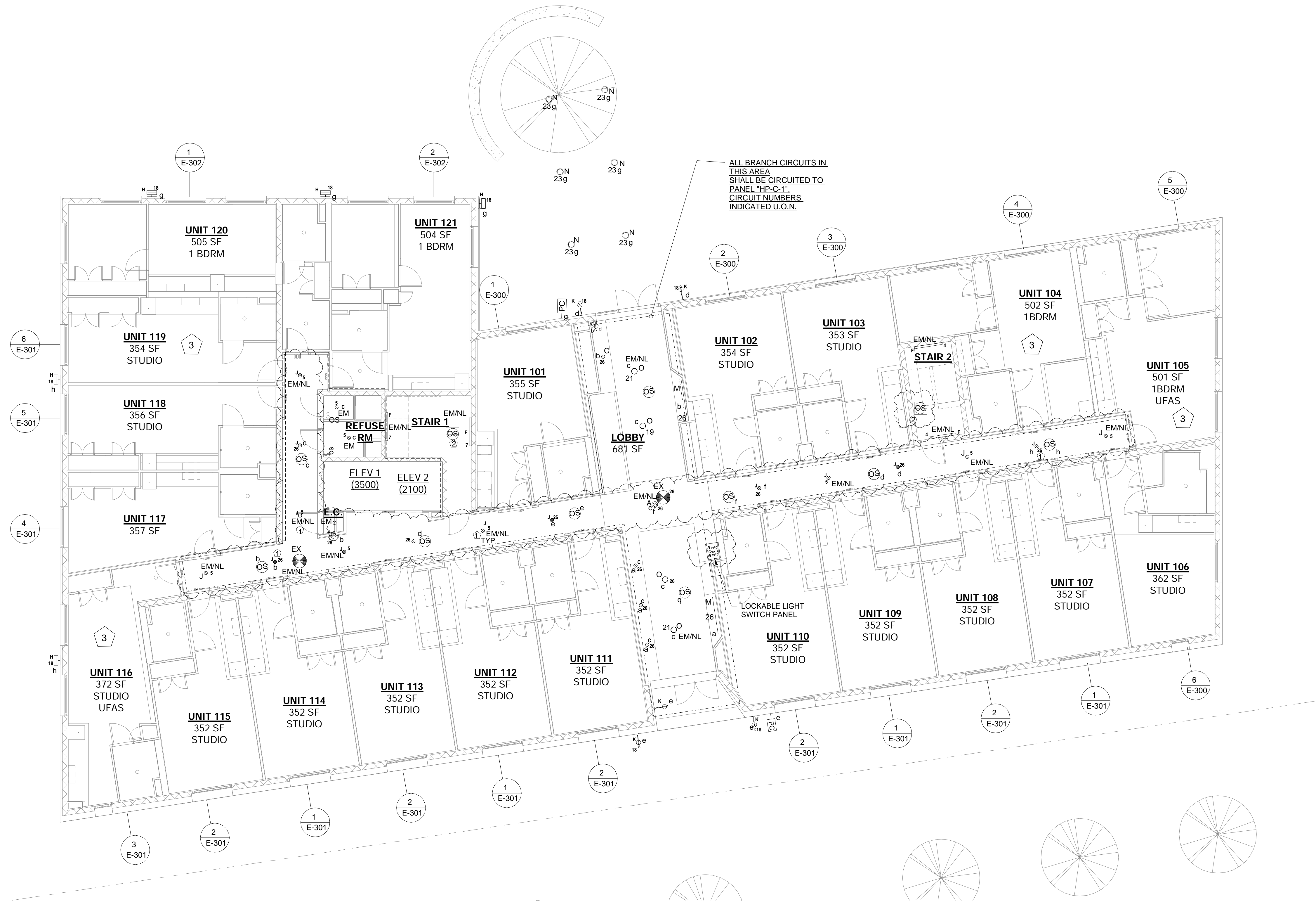
1. TRADE CONTRACTORS TO PROVIDE ALL LOCATIONS OF REQUIRED ACCESS TO GENERAL CONTRACTOR. GENERAL CONTRACTOR TO COORDINATE WITH ARCHITECT ON ACCESS DOOR LOCATIONS AND INSTALL ACCESS DOORS.

KEYED WORKED NOTES:

- 1 LIGHT FIXTURE TO REMAIN 'ON' CONTINUOUSLY .
- 2 REFER SHEET 5/E-401 FOR MORE INFORMATION .
- 3 FIXTURES AND SWITCHES TO BE EXPLOSION PROOF .
- 4 FIXTURES IN THE STARWAYS ARE CONTROLLED BY RADIO POWER SAVER OCCUPANCY SENSOR (LUTRON) WHICH ALLOWS THE FIXTURE TO BE DE-ENERGIZED TO HAVE 50% BRIGHTNESS WHEN NO OCCUPANCY AND HAVE FULL BRIGHTNESS IF THE SPACE IS OCCUPIED.

LIGHTING DRAWING NOTES:

1. REFER TO DWG. E-001.00 FOR ELECTRICAL GENERAL NOTES, SYMBOL LIST & ABBREVIATIONS AND E-002.00 FOR LIGHT FIXTURE SCHEDULE AND LIGHTING CONTROLS
2. ELECTRICAL CONTRACTOR TO COORDINATE THE LOCATION OF ALL VISIBLE ITEMS SUCH AS LIGHTING, SWITCHES, ACCESS PANELS, S/CO DETECTORS ETC WITH THE ARCHITECT/RCP.



1 GROUND FLOOR LIGHTING PLAN  
1/8" = 1'-0"

GENERAL NOTE:

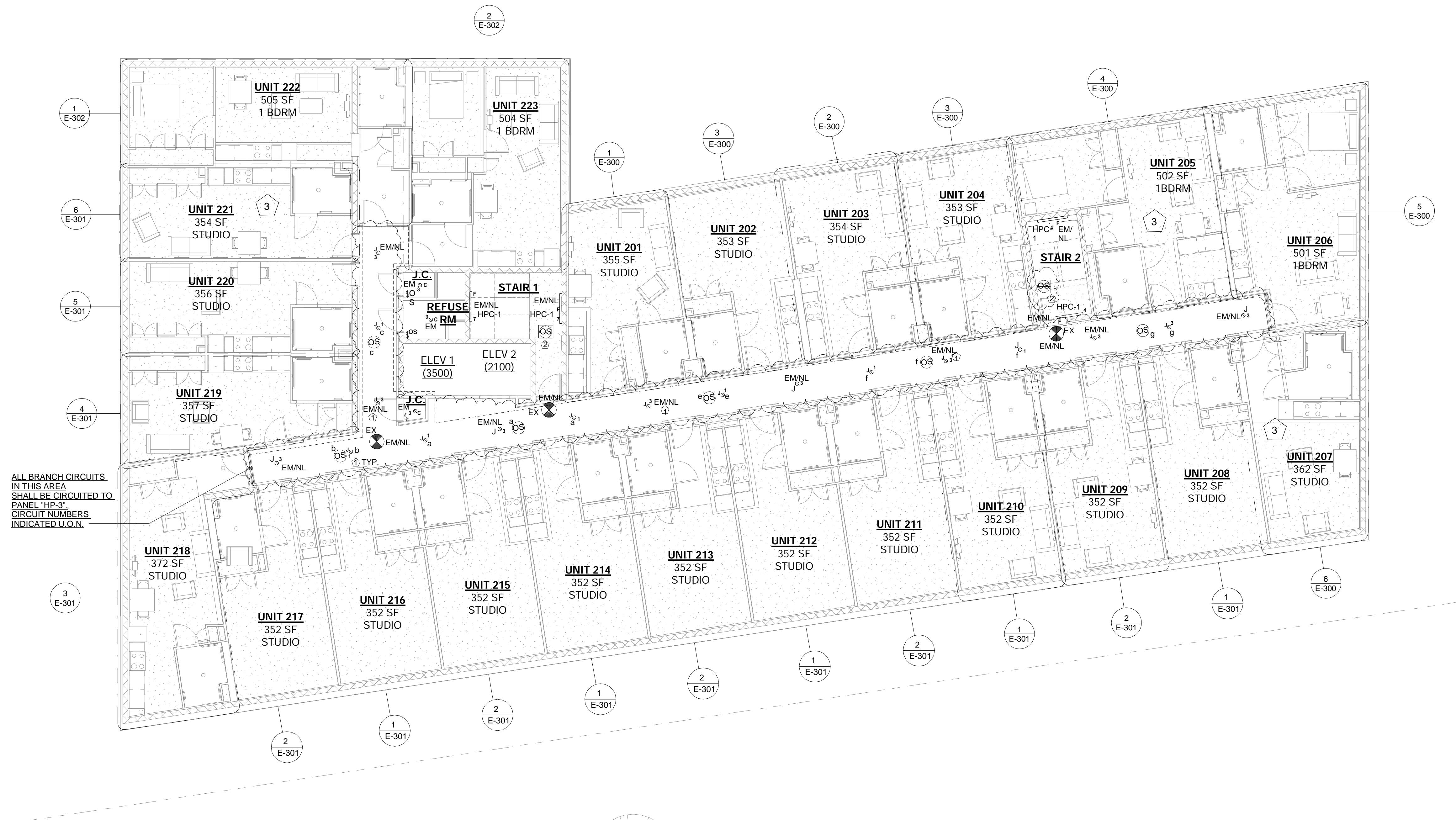
1. TRADE CONTRACTORS TO PROVIDE ALL LOCATIONS OF REQUIRED ACCESS TO GENERAL CONTRACTOR. GENERAL CONTRACTOR TO COORDINATE WITH ARCHITECT ON ACCESS DOOR LOCATIONS AND INSTALL ACCESS DOORS.

KEYED WORKED NOTES:

- 1 LIGHT FIXTURE TO REMAIN 'ON' CONTINUOUSLY .
- 2 FIXTURES IN THE STAIRWAYS ARE CONTROLLED BY RADIO POWER SAVER OCCUPANCY SENSOR (LUTRON) WHICH ALLOWS THE FIXTURE TO BE DE-ENERGIZED TO HAVE 50% BRIGHTNESS WHEN NO OCCUPANCY AND HAVE FULL BRIGHTNESS IF THE SPACE IS OCCUPIED.
- 3 ELECTRICAL CONTRACTOR TO COORDINATE SWITCH HEIGHT WITH UFA STANDARDS AND ARCHITECT FOR UFAS APARTMENTS.

LIGHTING DRAWING NOTES:

1. REFER TO DWG. E-001.00 FOR ELECTRICAL GENERAL NOTES, SYMBOL LIST & ABBREVIATIONS AND E-002.00 FOR LIGHT FIXTURE SCHEDULE AND LIGHTING CONTROLS
2. ELECTRICAL CONTRACTOR TO COORDINATE THE LOCATION OF ALL VISIBLE ITEMS SUCH AS LIGHTING, SWITCHES, ACCESS PANELS, S/CO DETECTORS ETC WITH THE ARCHITECT/RCP.



1 2ND FLOOR LIGHTING PLAN  
 1/8" = 1'-0"

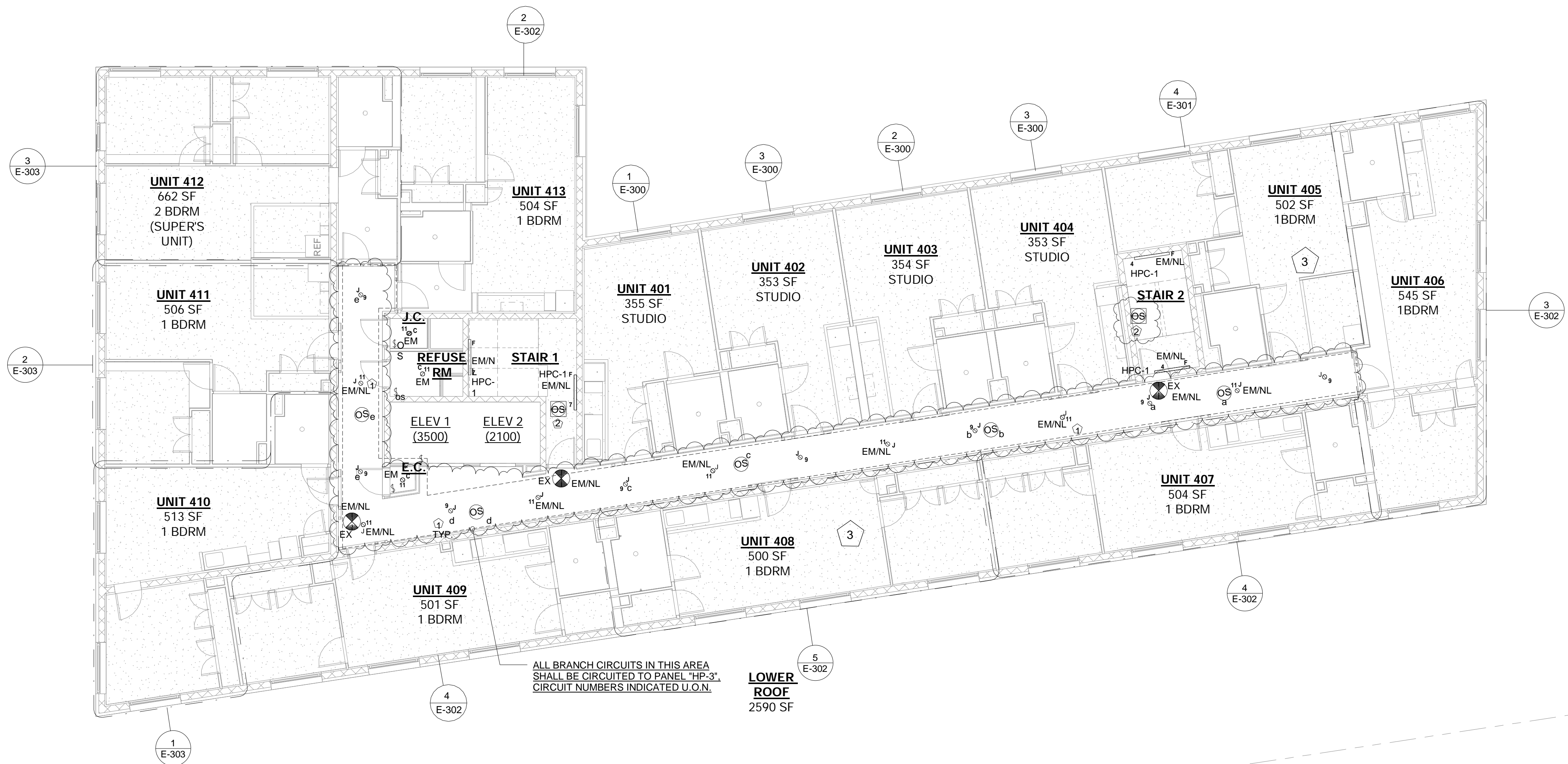
GENERAL NOTE:  
 1. TRADE CONTRACTORS TO PROVIDE ALL LOCATIONS OF REQUIRED ACCESS TO GENERAL CONTRACTOR. GENERAL CONTRACTOR TO COORDINATE WITH ARCHITECT ON ACCESS DOOR LOCATIONS AND INSTALL ACCESS DOORS.

- KEYED WORKED NOTES:
- 1 LIGHT FIXTURE TO BE REMAIN 'ON' CONTINUOUSLY .
  - 2 FIXTURES IN THE STAIRWAYS ARE CONTROLLED BY RADIO POWER SAVER OCCUPANCY SENSOR (LUTRON) WHICH ALLOWS THE FIXTURE TO BE DE-ENERGIZED TO HAVE 50% BRIGHTNESS WHEN NO OCCUPANCY AND HAVE FULL BRIGHTNESS IF THE SPACE IS OCCUPIED.
  - 3 ELECTRICAL CONTRACTOR TO COORDINATE SWITCH HEIGHT WITH UFA STANDARDS AND ARCHITECT FOR UFAS APARTMENTS.

- LIGHTING DRAWING NOTES:
- 1. REFER TO DWG. E-001.00 FOR ELECTRICAL GENERAL NOTES, SYMBOL LIST & ABBREVIATIONS AND E-002.00 FOR LIGHT FIXTURE SCHEDULE AND LIGHTING CONTROLS
  - 2. ELECTRICAL CONTRACTOR TO COORDINATE THE LOCATION OF ALL VISIBLE ITEMS SUCH AS LIGHTING, SWITCHES, ACCESS PANELS, S/CO DETECTORS ETC WITH THE ARCHITECT/RCP.







1 4TH FLOOR LIGHTING PLAN  
1/8" = 1'-0"

GENERAL NOTE:

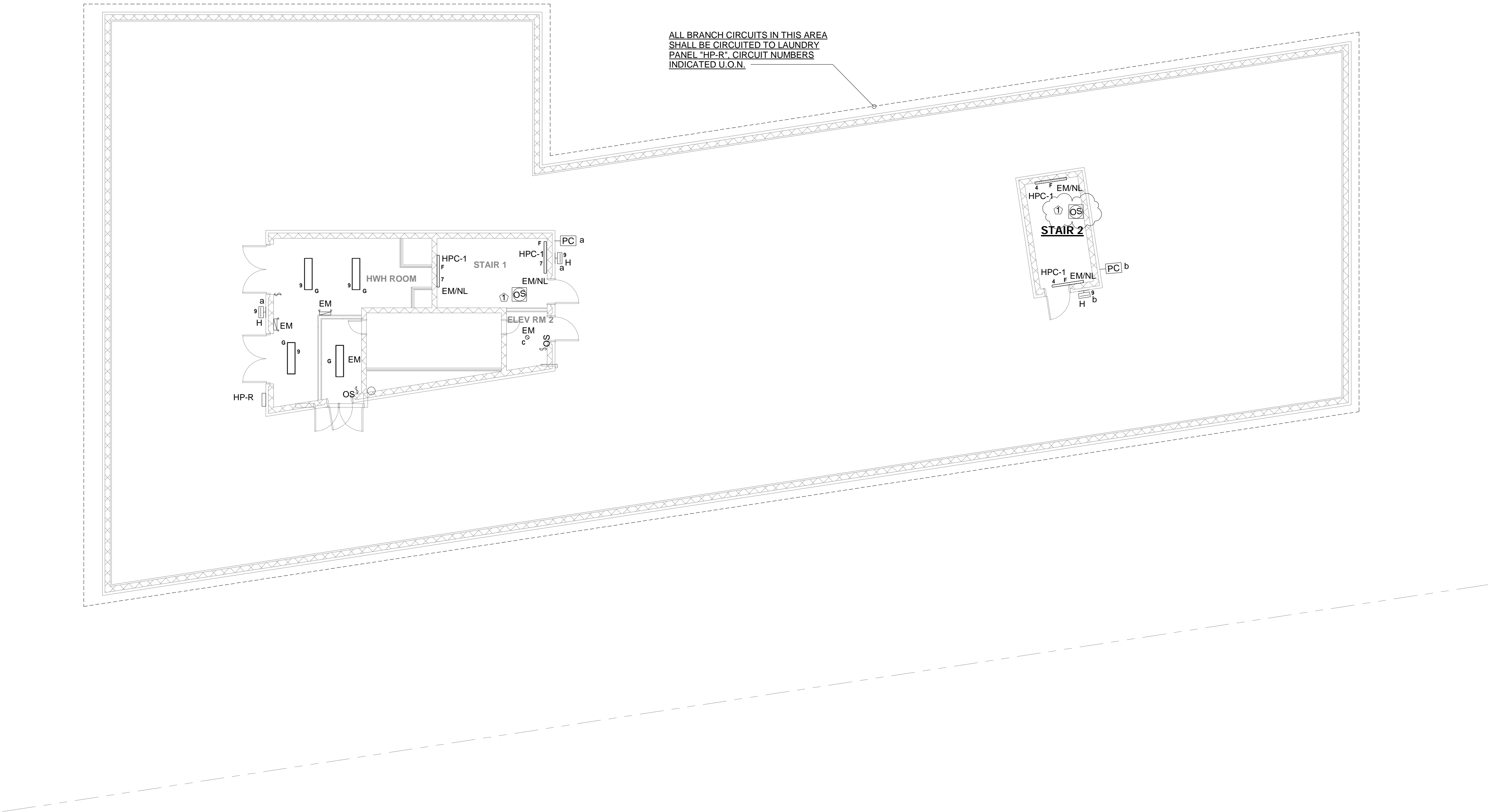
1. TRADE CONTRACTORS TO PROVIDE ALL LOCATIONS OF REQUIRED ACCESS TO GENERAL CONTRACTOR. GENERAL CONTRACTOR TO COORDINATE WITH ARCHITECT ON ACCESS DOOR LOCATIONS AND INSTALL ACCESS DOORS.

KEYED WORKED NOTES:

- 1 LIGHT FIXTURE TO REMAIN 'ON' CONTINUOUSLY .
- 2 FIXTURES IN THE STAIRWAYS ARE CONTROLLED BY RADIO POWER SAVER OCCUPANCY SENSOR (LUTRON) WHICH ALLOWS THE FIXTURE TO BE DE-ENERGIZED TO HAVE 50% BRIGHTNESS WHEN NO OCCUPANCY AND HAVE FULL BRIGHTNESS IF THE SPACE IS OCCUPIED.
- 3 ELECTRICAL CONTRACTOR TO COORDINATE SWITCH HEIGHT WITH UFA STANDARDS AND ARCHITECT FOR UFAS APARTMENTS.

LIGHTING DRAWING NOTES:

1. REFER TO DWG. E-001.00 FOR ELECTRICAL GENERAL NOTES, SYMBOL LIST & ABBREVIATIONS AND E-002.00 FOR LIGHT FIXTURE SCHEDULE AND LIGHTING CONTROLS
2. ELECTRICAL CONTRACTOR TO COORDINATE THE LOCATION OF ALL VISIBLE ITEMS SUCH AS LIGHTING, SWITCHES, ACCESS PANELS, S/CO DETECTORS ETC WITH THE ARCHITECT/RCP.
3. ELECTRICAL CONTRACTOR TO COORDINATE SWITCH HEIGHT WITH UFA STANDARDS AND ARCHITECT FOR UFAS APARTMENTS.



1 ROOF LIGHTING PLAN  
1/8" = 1'-0"

GENERAL NOTE:

1. TRADE CONTRACTORS TO PROVIDE ALL LOCATIONS OF REQUIRED ACCESS TO GENERAL CONTRACTOR. GENERAL CONTRACTOR TO COORDINATE WITH ARCHITECT ON ACCESS DOOR LOCATIONS AND INSTALL ACCESS DOORS.

KEYED WORKED NOTES:

1. FIXTURES IN THE STAIRWAYS ARE CONTROLLED BY RADIO POWER SAVER OCCUPANCY SENSOR (LUTRON) WHICH ALLOWS THE FIXTURE TO BE DE-ENERGIZED TO HAVE 50% BRIGHTNESS WHEN NO OCCUPANCY AND HAVE FULL BRIGHTNESS IF THE SPACE IS OCCUPIED.

LIGHTING DRAWING NOTES:

1. REFER TO DWG. E-001.00 FOR ELECTRICAL GENERAL NOTES, SYMBOL LIST & ABBREVIATIONS AND E-002.00 FOR LIGHT FIXTURE SCHEDULE AND LIGHTING CONTROLS
2. ELECTRICAL CONTRACTOR TO COORDINATE THE LOCATION OF ALL VISIBLE ITEMS SUCH AS LIGHTING, SWITCHES, ACCESS PANELS, S/CO DETECTORS ETC WITH THE ARCHITECT/RCP.

- 1 SERVICE END BOX CON-ED SPEC EQ-9073-B.
- 2 1600A SERVICE SWITCH & CT CABINET FOR HOUSE.
- 3 800A DISCONNECT SWITCH FOR SPRINKLER BOOSTER PUMP.
- 4 1200A SERVICE SWITCH & CT CABINET FOR APARTMENTS
- 5 MAIN DISTRIBUTION PANEL
- 6 BRANCH FEEDER MONITOR-136 FROM SATEC
- 7 DISCONNECT SWITCH FOR FIRE ALARM CONTROL PANEL
- 8 HOUSE PANEL HP-C-1
- 9 3/4" FIRE RATED PLYWOOD BACKING FOR VIDEO INTERCOM EQUIPMENT
- 10 ELECTRIC SUB METER( MODEL-VT-2 BY GLOBAL OR EQUIVALENT) FOR PANEL "HP-C-2" IN LOUNDRY AREA
- 11 1600A SWITCHBOARD "SWDB-C"
- 12 HOUSE PANEL HP-C-3

**RECREATION**  
**TERRACE**  
1192 SF

7 DISCONNECT SWITCH FOR FIRE ALARM CONTROL PANEL

8 HOUSE PANEL HP-C-1

9 3/4" FIRE RATED PLYWOOD BACKING FOR VIDEO INTERCOM EQUIPMENT

10 ELECTRIC SUB METER (MODEL-VT-2 BY GLOBAL OR EQUIVALENT) FOR PANEL HP-C-2 IN LAUNDRY AREA

11 1600A SWITCHBOARD "SWDB-C"

12 HOUSE PANEL HP-C-3

ALL BRANCH CIRCUITS IN THIS AREA SHALL BE CIRCUITED TO LAUNDRY PANEL "HP-C-2". CIRCUIT NUMBERS INDICATED U.O.N.

BRANCH CIRCUITS IN THIS AREA SHALL BE CIRCUITED TO PANEL "HP-C-1". CIRCUIT NUMBERS INDICATED U.O.N.

COMMUNITY ROOM 1  
1192 SF

COMMUNITY ROOM 2

COMM. RM 3

LAUNDRY

MAINTENANCE ROOM

TRASH COMPACTOR RM

BIKE STORAGE

SENIOR SERVICES OFFICE

PROP. MANAGER

VRF AND ERV CONTROLLERS

PULLBOX 36"X36"W"X6"H

RESTROOM 1

RESTROOM 2

PACKAGE RM

ROOM

WATER SUBMETER CONTROLLER

TELECOM/DATA CONDUITS

WATER SERVICE

WATER SUBMETER

DXF-1

DXF-2

DXF-3

DXF-4

DXF-5

DXF-6

DXF-7

DXF-8

DXF-9

DXF-10

DXF-11

DXF-12

DXF-13

DXF-14

DXF-15

DXF-16

DXF-17

DXF-18

DXF-19

DXF-20

DXF-21

DXF-22

DXF-23

DXF-24

DXF-25

DXF-26

DXF-27

DXF-28

DXF-29

DXF-30

DXF-31

DXF-32

DXF-33

DXF-34

DXF-35

DXF-36

DXF-37

DXF-38

DXF-39

DXF-40

DXF-41

DXF-42

DXF-43

DXF-44

DXF-45

DXF-46

DXF-47

DXF-48

DXF-49

DXF-50

DXF-51

DXF-52

DXF-53

DXF-54

DXF-55

DXF-56

DXF-57

DXF-58

DXF-59

DXF-60

DXF-61

DXF-62

DXF-63

DXF-64

DXF-65

DXF-66

DXF-67

DXF-68

DXF-69

DXF-70

DXF-71

DXF-72

DXF-73

DXF-74

DXF-75

DXF-76

DXF-77

DXF-78

DXF-79

DXF-80

DXF-81

DXF-82

DXF-83

DXF-84

DXF-85

DXF-86

DXF-87

DXF-88

DXF-89

DXF-90

DXF-91

DXF-92

DXF-93

DXF-94

DXF-95

DXF-96

DXF-97

DXF-98

DXF-99

DXF-100

DXF-101

DXF-102

DXF-103

DXF-104

DXF-105

DXF-106

DXF-107

DXF-108

DXF-109

DXF-110

DXF-111

DXF-112

DXF-113

DXF-114

DXF-115

DXF-116

DXF-117

DXF-118

DXF-119

DXF-120

DXF-121

DXF-122

DXF-123

DXF-124

DXF-125

DXF-126

DXF-127

DXF-128

DXF-129

DXF-130

DXF-131

DXF-132

DXF-133

DXF-134

DXF-135

DXF-136

DXF-137

DXF-138

DXF-139

DXF-140

DXF-141

DXF-142

DXF-143

DXF-144

DXF-145

DXF-146

DXF-147

DXF-148

DXF-149

DXF-150

DXF-151

DXF-152

DXF-153

DXF-154

DXF-155

DXF-156

DXF-157

DXF-158

DXF-159

DXF-160

DXF-161

DXF-162

DXF-163

DXF-164

DXF-165

DXF-166

DXF-167

DXF-168

DXF-169

DXF-170

DXF-171

DXF-172

DXF-173

DXF-174

DXF-175

DXF-176

DXF-177

DXF-178

DXF-179

DXF-180

DXF-181

DXF-182

DXF-183

DXF-184

DXF-185

DXF-186

DXF-187

DXF-188

DXF-189

DXF-190

DXF-191

DXF-192

DXF-193

DXF-194

DXF-195

DXF-196

DXF-197

DXF-198

DXF-199

DXF-200

DXF-201

DXF-202

DXF-203

DXF-204

DXF-205

DXF-206

DXF-207

DXF-208

DXF-209

DXF-210

DXF-211

DXF-212

DXF-213

DXF-214

DXF-215

DXF-216

DXF-217

DXF-218

DXF-219

DXF-220

DXF-221

DXF-222

DXF-223

DXF-224

DXF-225

DXF-226

DXF-227

DXF-228

DXF-229

DXF-230

DXF-231

DXF-232

DXF-233

DXF-234

DXF-235

DXF-236

DXF-237

DXF-238

DXF-239

DXF-240

DXF-241

DXF-242

DXF-243

DXF-244

DXF-245

DXF-246

DXF-247

DXF-248

DXF-249

DXF-250

DXF-251

DXF-252

DXF-253

DXF-254

DXF-255

DXF-256

DXF-257

DXF-258

DXF-259

DXF-260

DXF-261

DXF-262

DXF-263

DXF-264

DXF-265

DXF-266

DXF-267

DXF-268

DXF-269

DXF-270

DXF-271

DXF-272

DXF-273

DXF-274

DXF-275

DXF-276

DXF-277

DXF-278

DXF-279

DXF-280

DXF-281

DXF-282

DXF-283

DXF-284

DXF-285

DXF-286

DXF-287

DXF-288

DXF-289

DXF-290

DXF-291

DXF-292

DXF-293

DXF-294

DXF-295

DXF-296

DXF-297

DXF-298

DXF-299

DXF-300

DXF-301

DXF-302

DXF-303

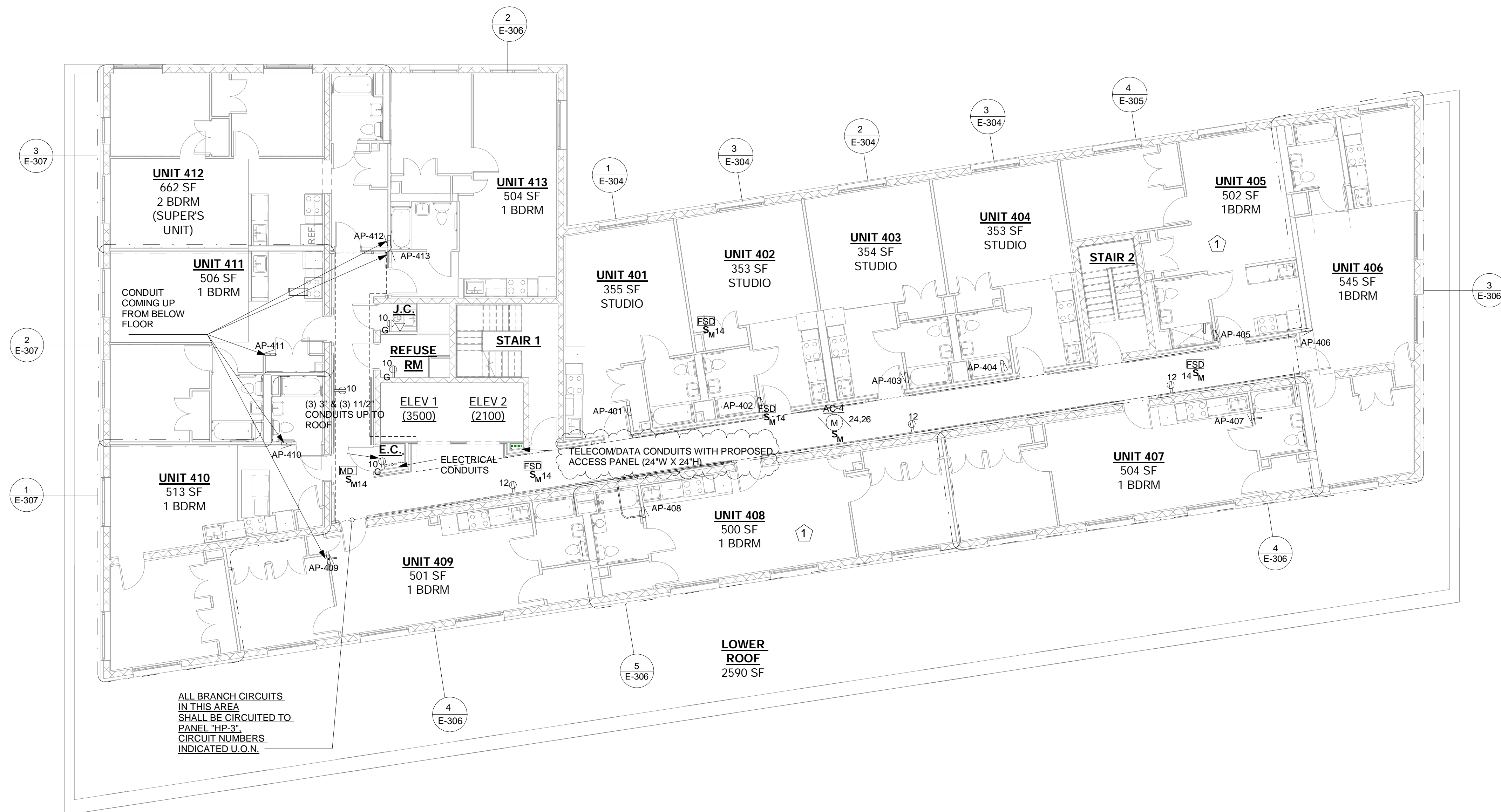
DXF

3.E.C. TO COORDINATE WITH PLUMBING CONTRACTOR FOR INSTALLATION OF HEAT TRACING SYSTEM.









① 4TH FLOOR ELECTRICAL POWER PLAN  
1/8" = 1'-0"

**GENERAL NOTE:**

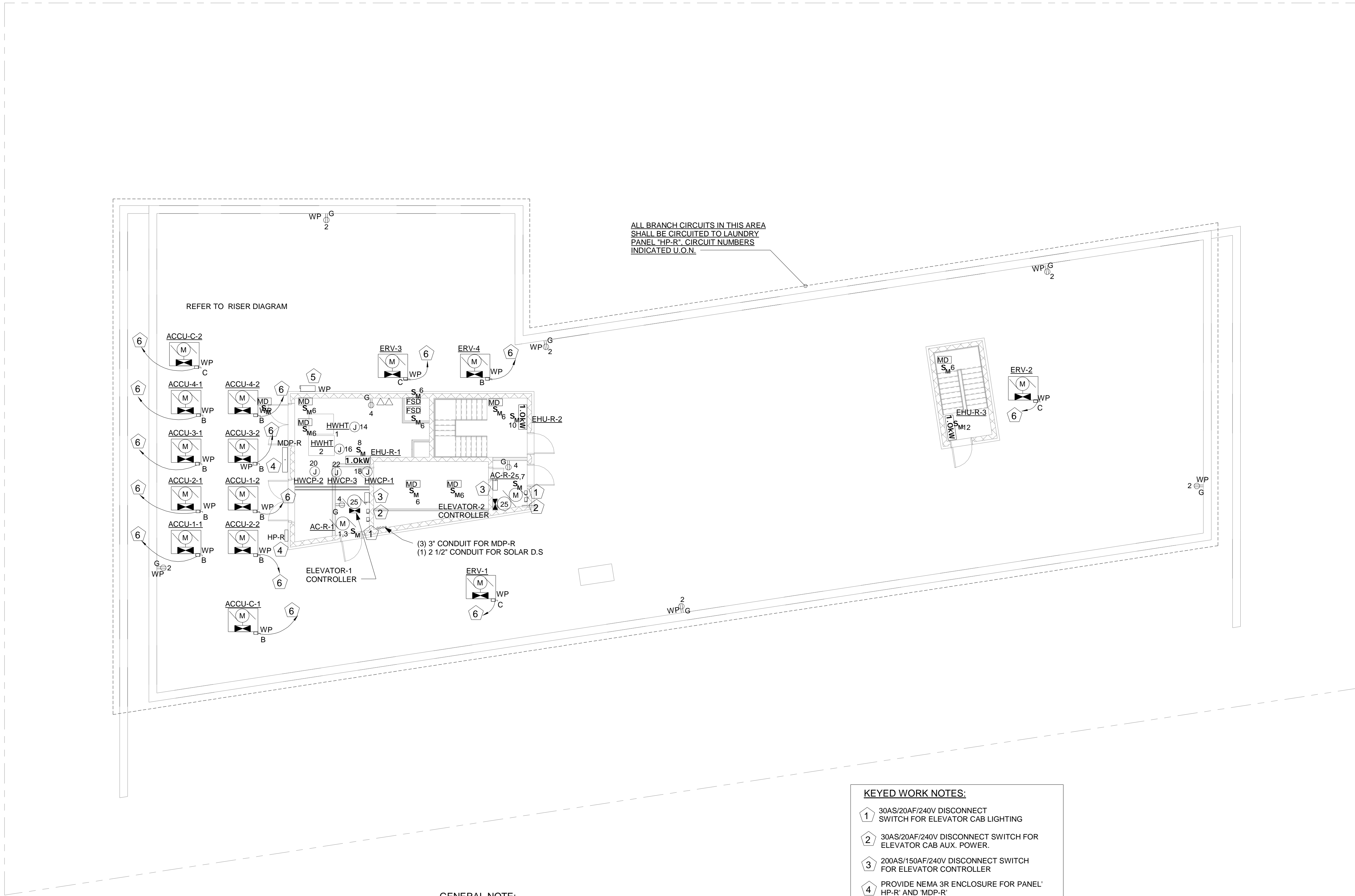
- TRADE CONTRACTORS TO PROVIDE ALL LOCATIONS OF REQUIRED ACCESS TO GENERAL CONTRACTOR. GENERAL CONTRACTOR TO COORDINATE WITH ARCHITECT ON ACCESS DOOR LOCATIONS AND INSTALL ACCESS DOORS.

**KEYED WORK NOTE:**

- ELECTRICAL CONTRACTOR TO COORDINATE RECEPTACLE HEIGHT WITH UFA STANDARDS AND ARCHITECT FOR UFAS APARTMENTS.

**POWER DRAWING NOTES:**

- ALL BRANCH CIRCUITS HOMERUNS ASSIGN INDICATED ON THIS PLAN SHALL BE CIRCUITED TO PANEL AS MENTIONED ON PLANS, CIRCUIT NUMBER INDICATED, U.O.N
- REFER TO DWG. E-001.00 FOR ELECTRICAL GENERAL NOTES, SYMBOL LIST & ABBREVIATIONS. E-003.00 & E-004.00 FOR ADDITIONAL ELECTRICAL SPECIFICATIONS



REFER TO RISER DIAGRAM

ALL BRANCH CIRCUITS IN THIS AREA  
SHALL BE CIRCUITED TO LAUNDRY  
PANEL "HP-R" CIRCUIT NUMBERS  
INDICATED U.O.N.

GENERAL NOTE:

1. TRADE CONTRACTORS TO PROVIDE ALL LOCATIONS OF  
REQUIRED ACCESS TO GENERAL CONTRACTOR. GENERAL  
CONTRACTOR TO COORDINATE WITH ARCHITECT ON  
ACCESS DOOR LOCATIONS AND INSTALL ACCESS DOORS.

KEYED WORK NOTES:	
1	30AS/20AF/240V DISCONNECT SWITCH FOR ELEVATOR CAB LIGHTING
2	30AS/20AF/240V DISCONNECT SWITCH FOR ELEVATOR CAB AUX. POWER.
3	200AS/150AF/240V DISCONNECT SWITCH FOR ELEVATOR CONTROLLER
4	PROVIDE NEMA 3R ENCLOSURE FOR PANEL' HP-R' AND MDP-R'
5	200AS/200AF/240V DISCONNECT SWITCH FOR SOLAR PANEL
6	REFER TO RISER DIAGRAM ON SHEET NO. E-500 FOR BREAKER SIZE AND WIRE SIZE

POWER DRAWING NOTES:

1. ALL BRANCH CIRCUITS HOMERUNS ASSIGN INDICATED ON THIS  
PLAN SHALL BE CIRCUITED TO PANEL AS MENTIONED ON PLANS,  
CIRCUIT NUMBER INDICATED, U.O.N
2. REFER TO DWG. E-001.00 FOR ELECTRICAL GENERAL NOTES,  
SYMBOL LIST & ABBREVIATIONS. E-003.00 & E-004.00 FOR  
ADDITIONAL ELECTRICAL SPECIFICATIONS

1 ROOF ELECTRICAL POWER PLAN  
1/8" = 1'-0"