

4 CELLAR FLOOR GAS VENT SECTION  
3/8" = 1'-0"



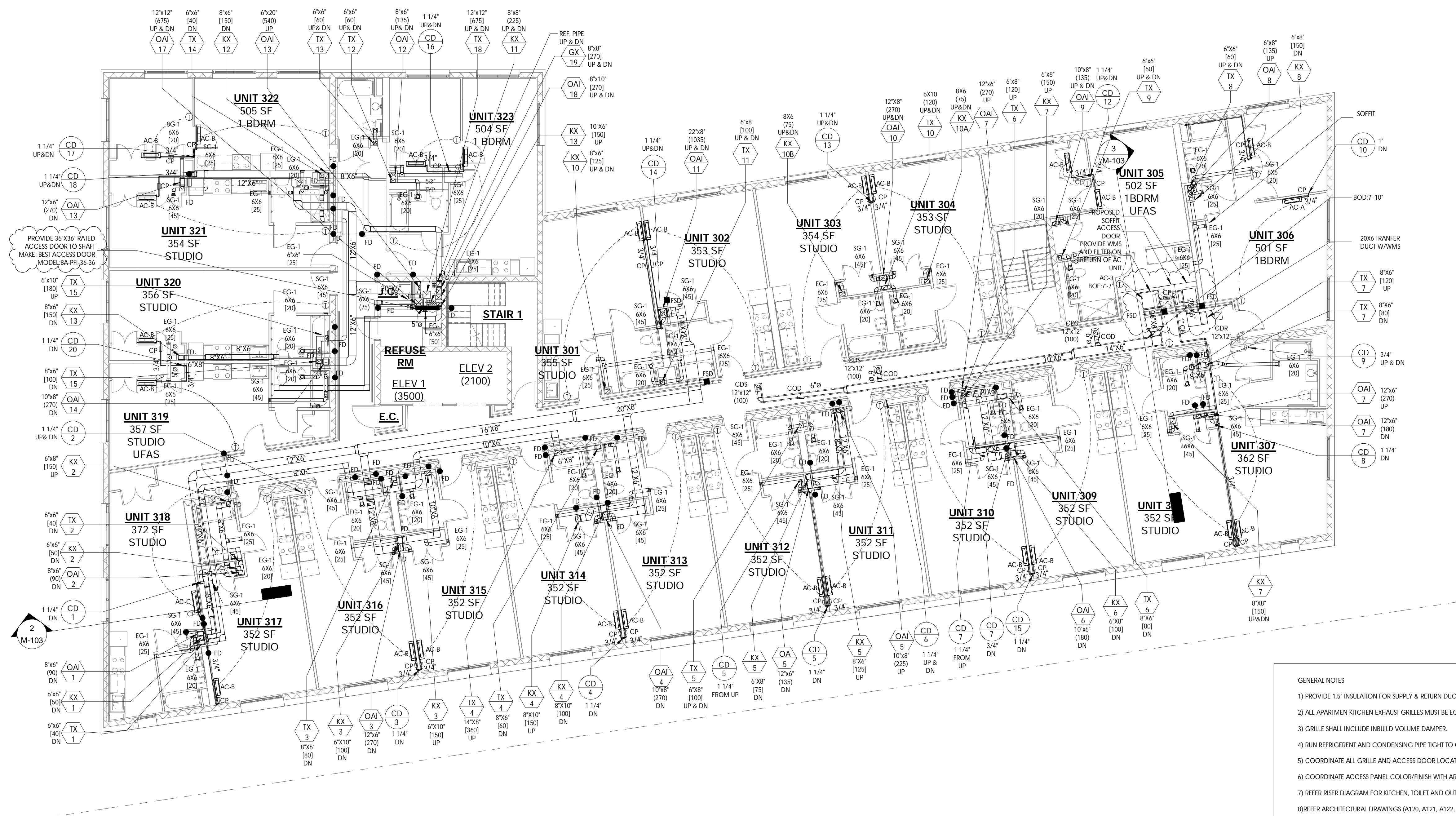


1 GROUND FLOOR MECHANICAL PLAN  
1/8" = 1'-0"

- GENERAL NOTES
- 1) PROVIDE 1.5" INSULATION FOR SUPPLY & RETURN DUCTWORK FROM AC UNITS.
  - 2) ALL APARTMENT KITCHEN EXHAUST GRILLES MUST BE EQUIPPED WITH A MERV 3 OR WASHABLE CARBON FILTER FOR TRAPPING GREASE.
  - 3) GRILLE SHALL INCLUDE INBUILD VOLUME DAMPER.
  - 4) RUN REFRIGERANT AND CONDENSING PIPE TIGHT TO CEILING.
  - 5) COORDINATE ALL GRILLE AND ACCESS DOOR LOCATION WITH ARCHITECT.
  - 6) COORDINATE ACCESS PANEL COLOR/FINISH WITH ARCHITECT.
  - 7) OUTDOOR AIR INTAKE EXHAUST OPENINGS STAIRWAY AND SHAFT VENT SHALL BE PROVIDED WITH CLASS I MOTORIZED DAMPERS. THE DAMPERS SHALL HAVE AIR LEAKAGE RATE NOT GREATER THAN 4CFM/FT<sup>2</sup> OF DAMPER SURFACE AREA AT 1.0 INCH WATER GAUGE AND SHALL BE LABELED BY AN APPROVED AGENCY WHEN TESTED IN ACCORDANCE WITH AMCA 5000.
  - 8) REFER RISER DIAGRAM FOR KITCHEN, TOILET AND OUTDOOR AIR BRANCH DUCT SIZES.
  - 9) REFER ARCHITECTURAL DRAWINGS (A120, A121, A122, A123, A124) FOR LOCATION OF SHAFT RISERS.
  - 10) CONDENSATE PUMP FOR ALL WALL MOUNTED AC UNIT SHALL BE MOUNTED INSIDE THE CASING BEHIND AC UNIT. REFER DETAIL 8 ON SHEET M-504.00.
  - 11) TRADE CONTRACTORS TO PROVIDE ALL LOCATIONS OF REQUIRED ACCESS TO GENERAL CONTRACTOR. GENERAL CONTRACTOR TO COORDINATE WITH ARCHITECT ON ACCESS DOOR LOCATIONS AND INSTALL ACCESS DOORS.

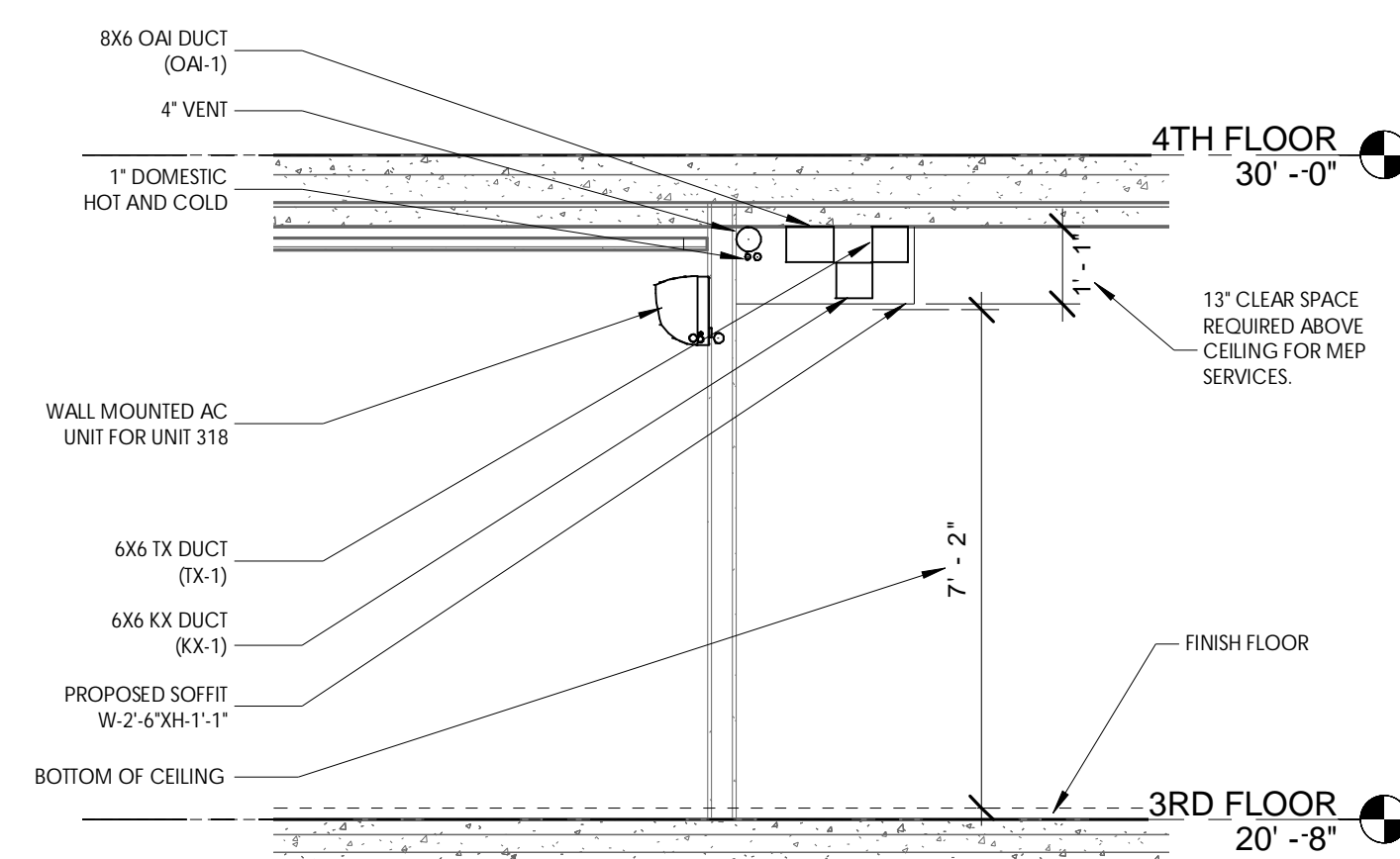




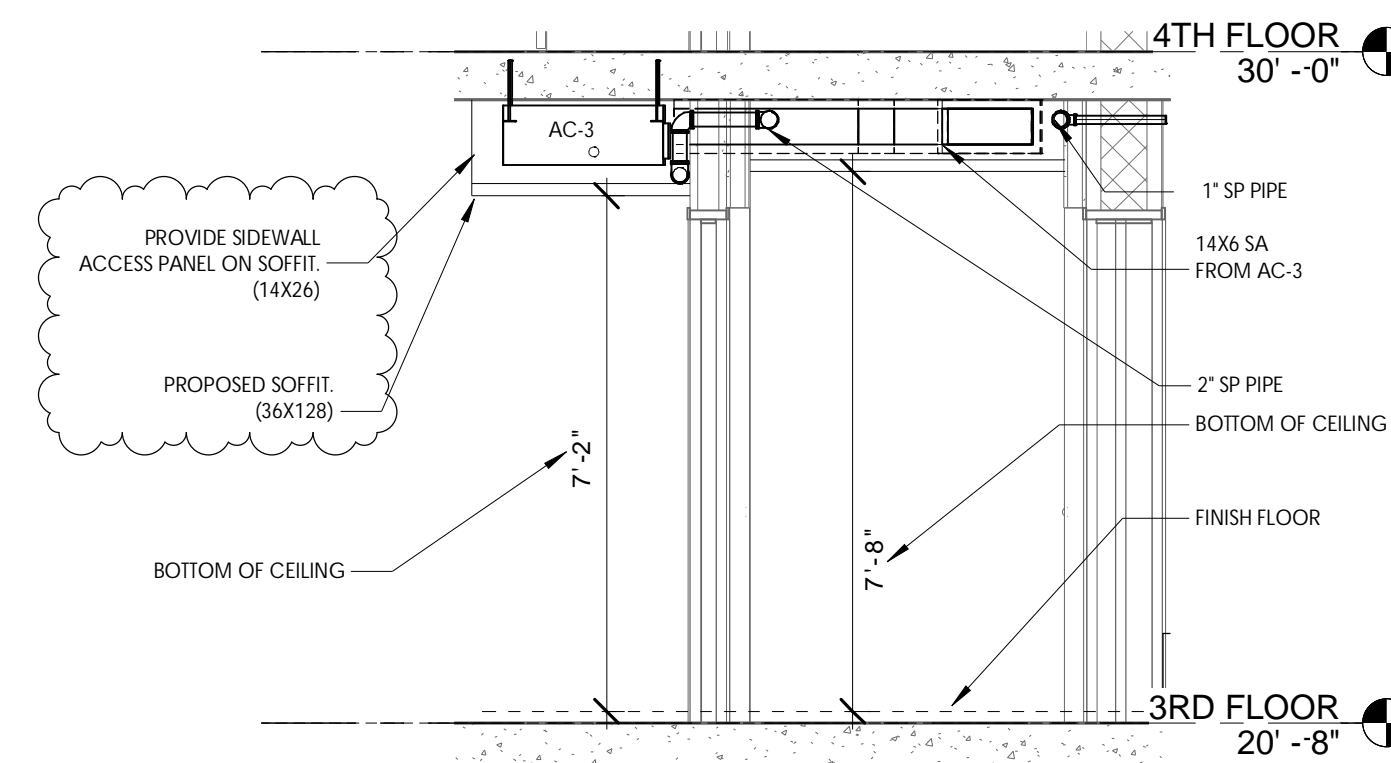


- GENERAL NOTES
- 1) PROVIDE 1.5" INSULATION FOR SUPPLY & RETURN DUCTWORK FROM AC UNITS.
  - 2) ALL APARTMENT KITCHEN EXHAUST GRILLES MUST BE EQUIPPED WITH A MERV 3 OR WASHABLE CARBON FILTER FOR TRAPPING GREASE.
  - 3) GRILLE SHALL INCLUDE INBUILD VOLUME DAMPER.
  - 4) RUN REFRIGERANT AND CONDENSING PIPE TIGHT TO CEILING.
  - 5) COORDINATE ALL GRILLE AND ACCESS DOOR LOCATION WITH ARCHITECT.
  - 6) COORDINATE ACCESS PANEL COLOR/FINISH WITH ARCHITECT.
  - 7) REFER RISER DIAGRAM FOR KITCHEN, TOILET AND OUTDOOR AIR BRANCH DUCT SIZES.
  - 8) REFER ARCHITECTURAL DRAWINGS (A120, A121, A122, A123, A124) FOR LOCATION OF SHAFT RISERS.
  - 9) CONDENSATE PUMP FOR ALL WALL MOUNTED AC UNIT SHALL BE MOUNTED INSIDE THE CASING BEHIND AC UNIT. REFER DETAIL 8 ON SHEET M-504.00.
  - 11) TRADE CONTRACTORS TO PROVIDE ALL LOCATIONS OF REQUIRED ACCESS TO GENERAL CONTRACTOR. GENERAL CONTRACTOR TO COORDINATE WITH ARCHITECT ON ACCESS DOOR LOCATIONS AND INSTALL ACCESS DOORS.

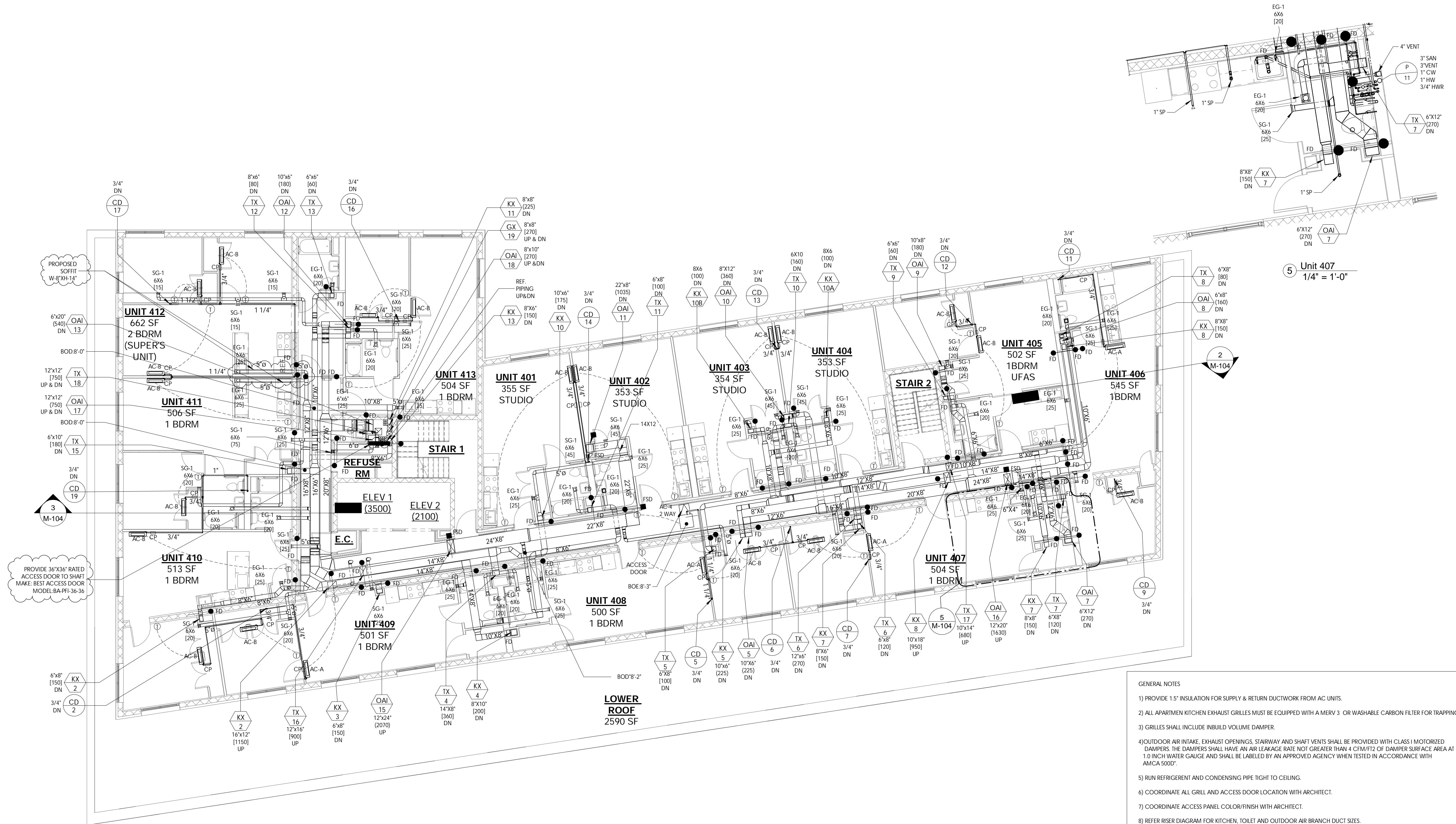
① 3RD FLOOR MECHANICAL PLAN  
1/8" = 1'-0"



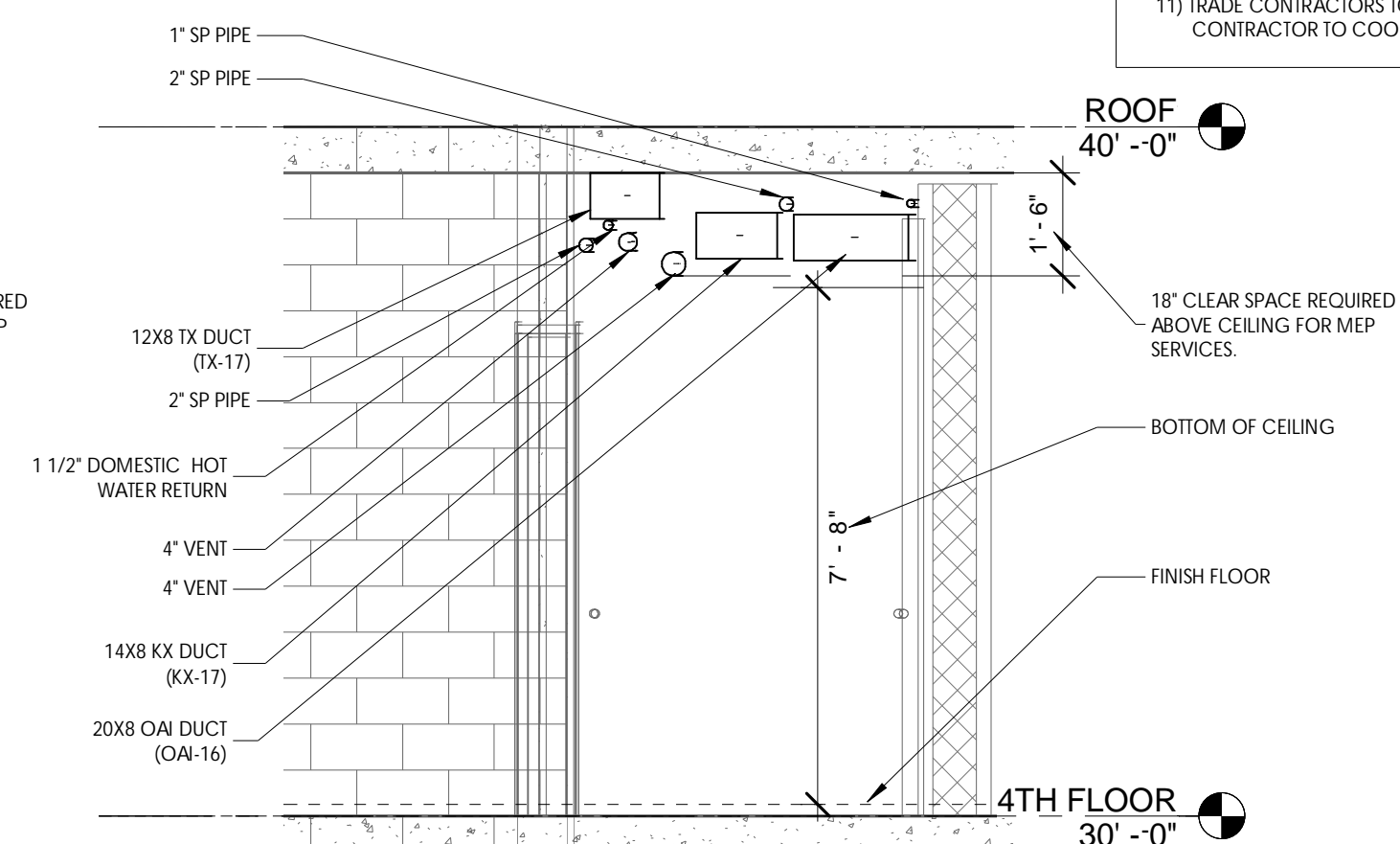
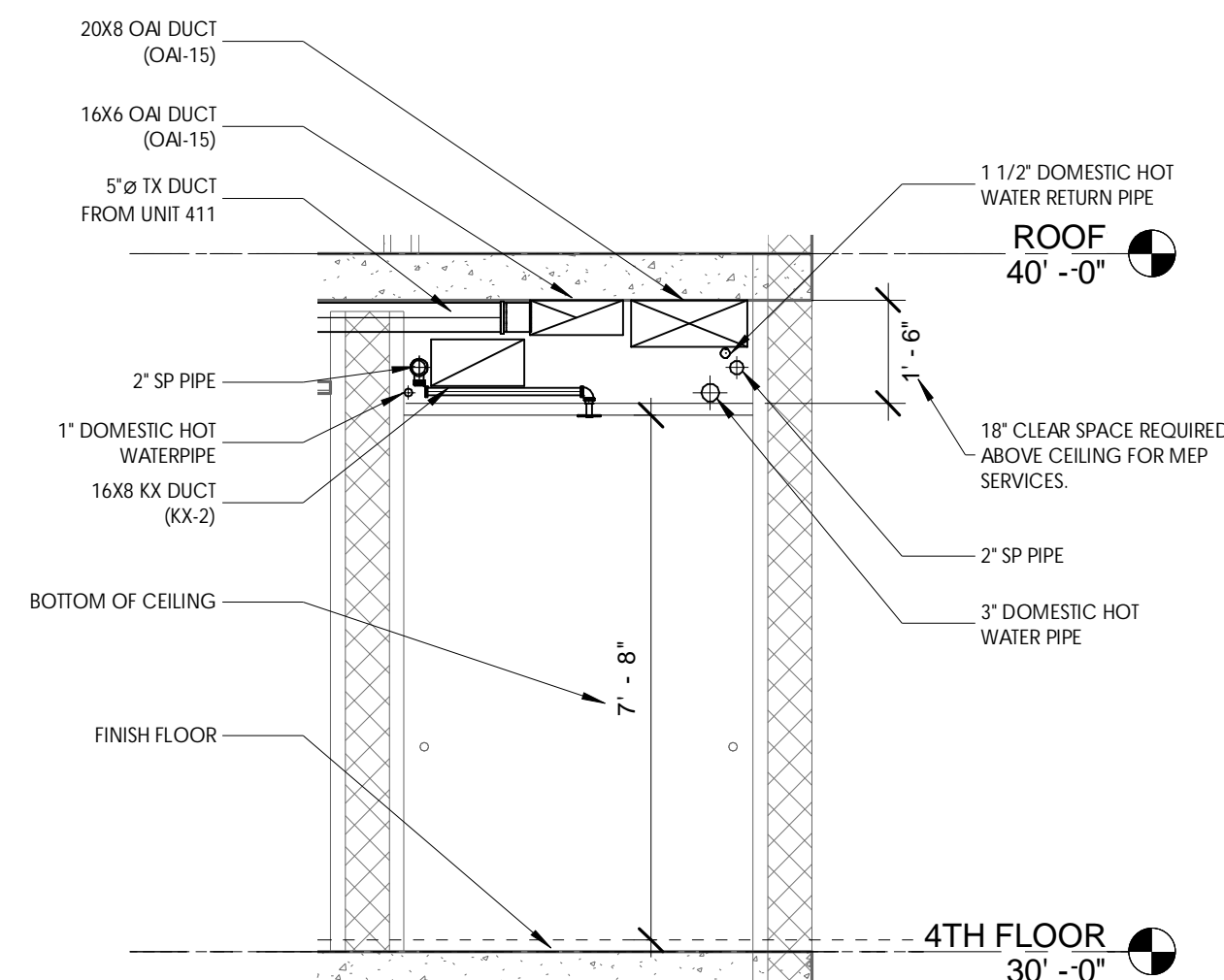
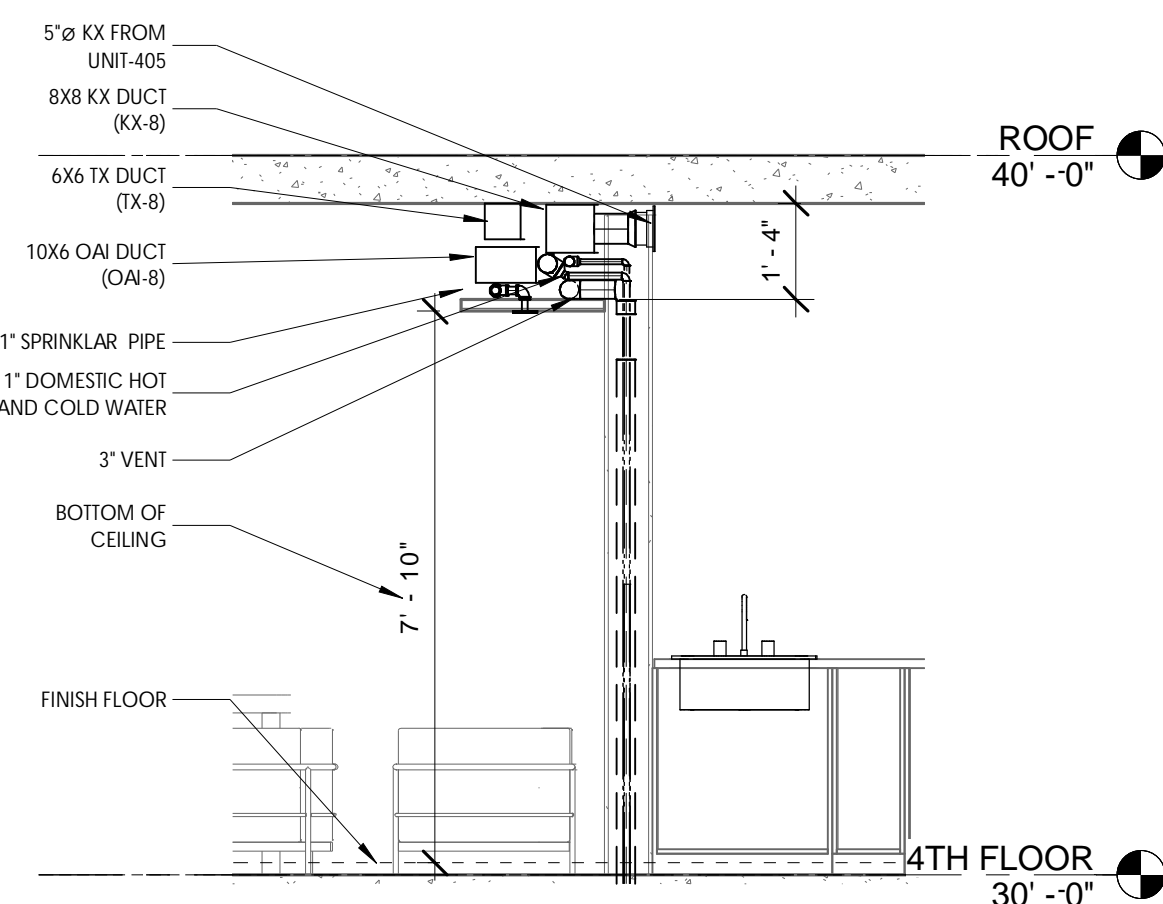
② 3RD FLOOR UNIT 318 & 317  
3/8" = 1'-0"



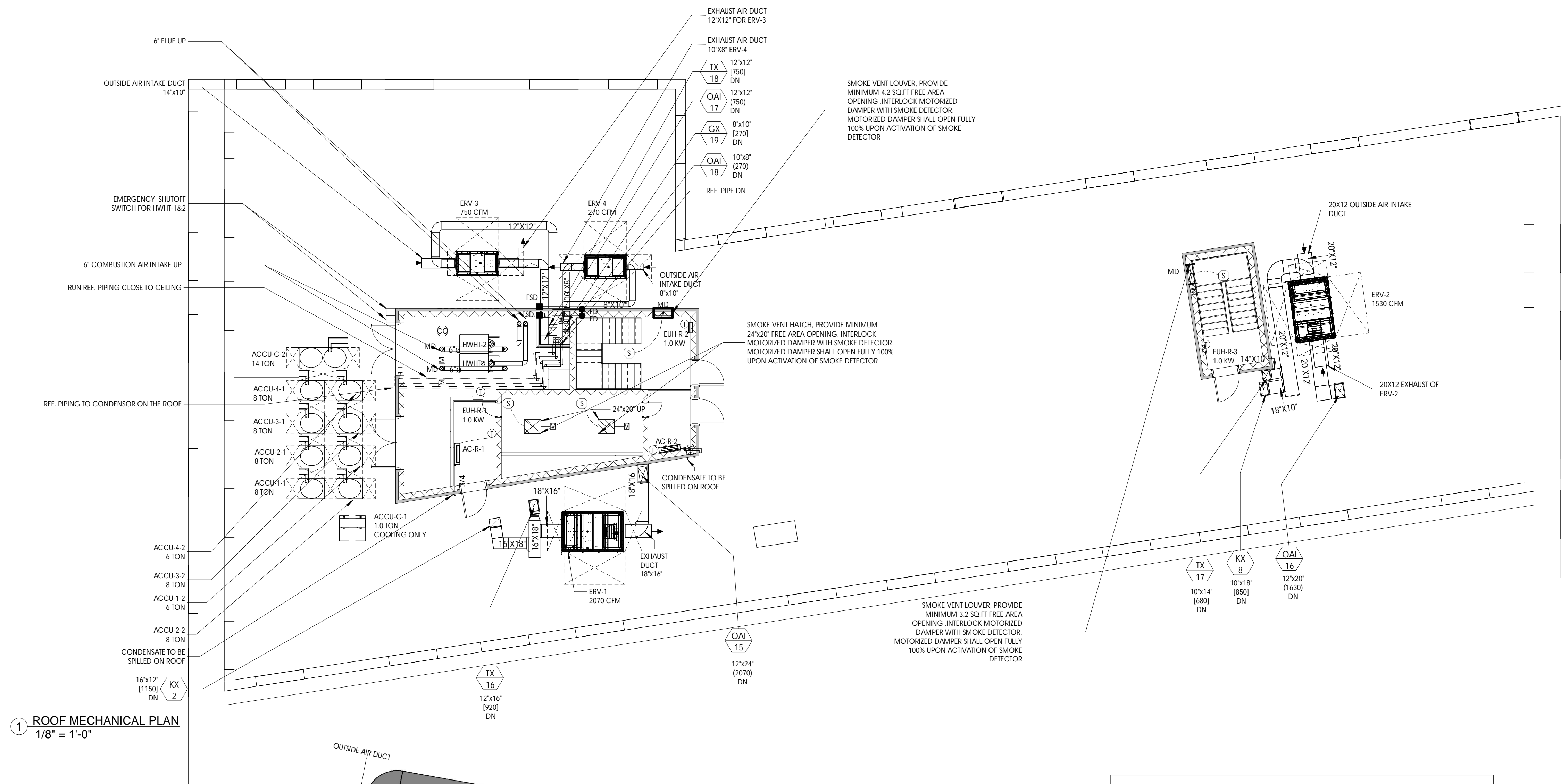
③ 3RD FLOOR CORRIDOR  
3/8" = 1'-0"



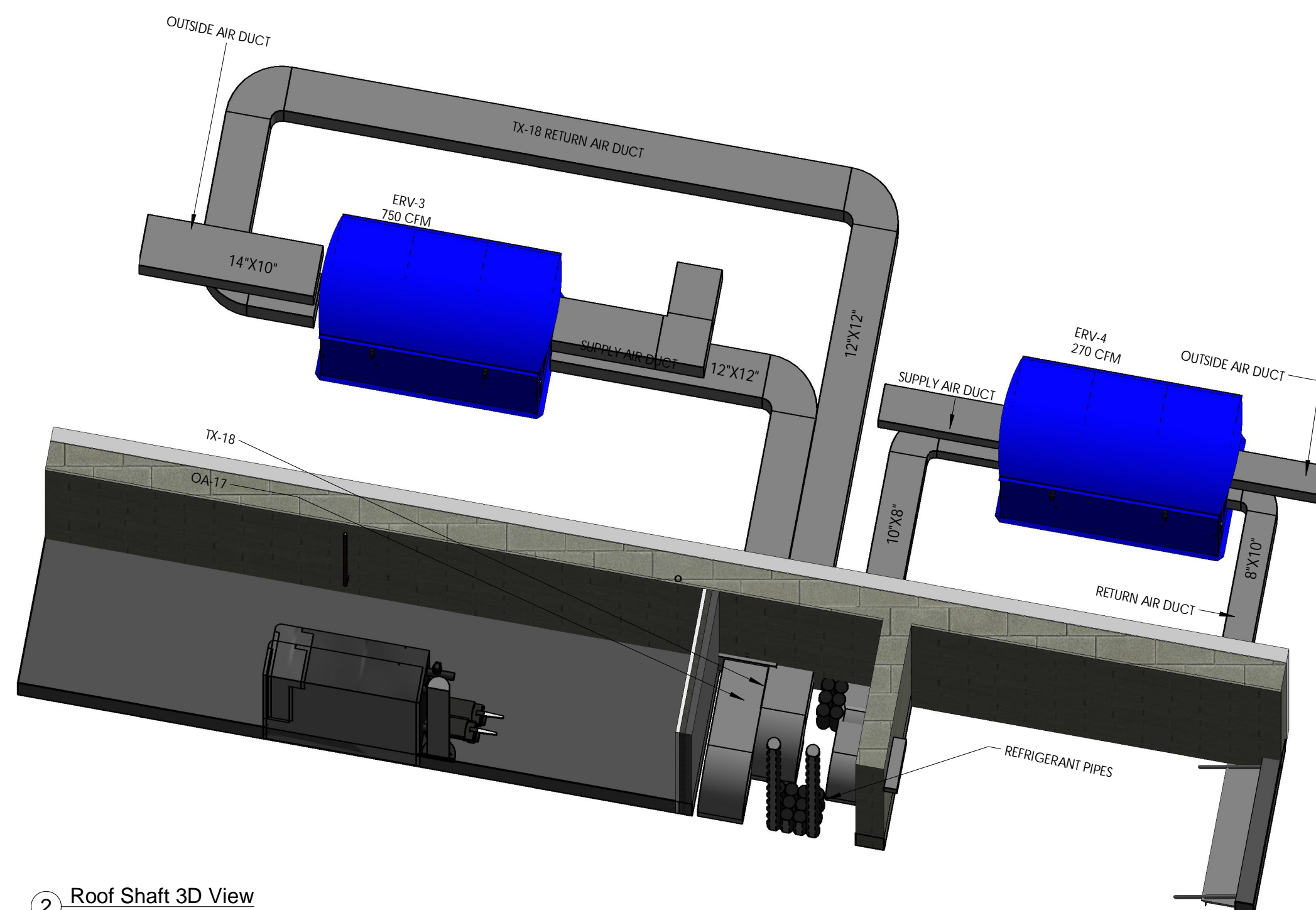
① 4TH FLOOR MECHANICAL PLAN  
1/8" = 1'-0"







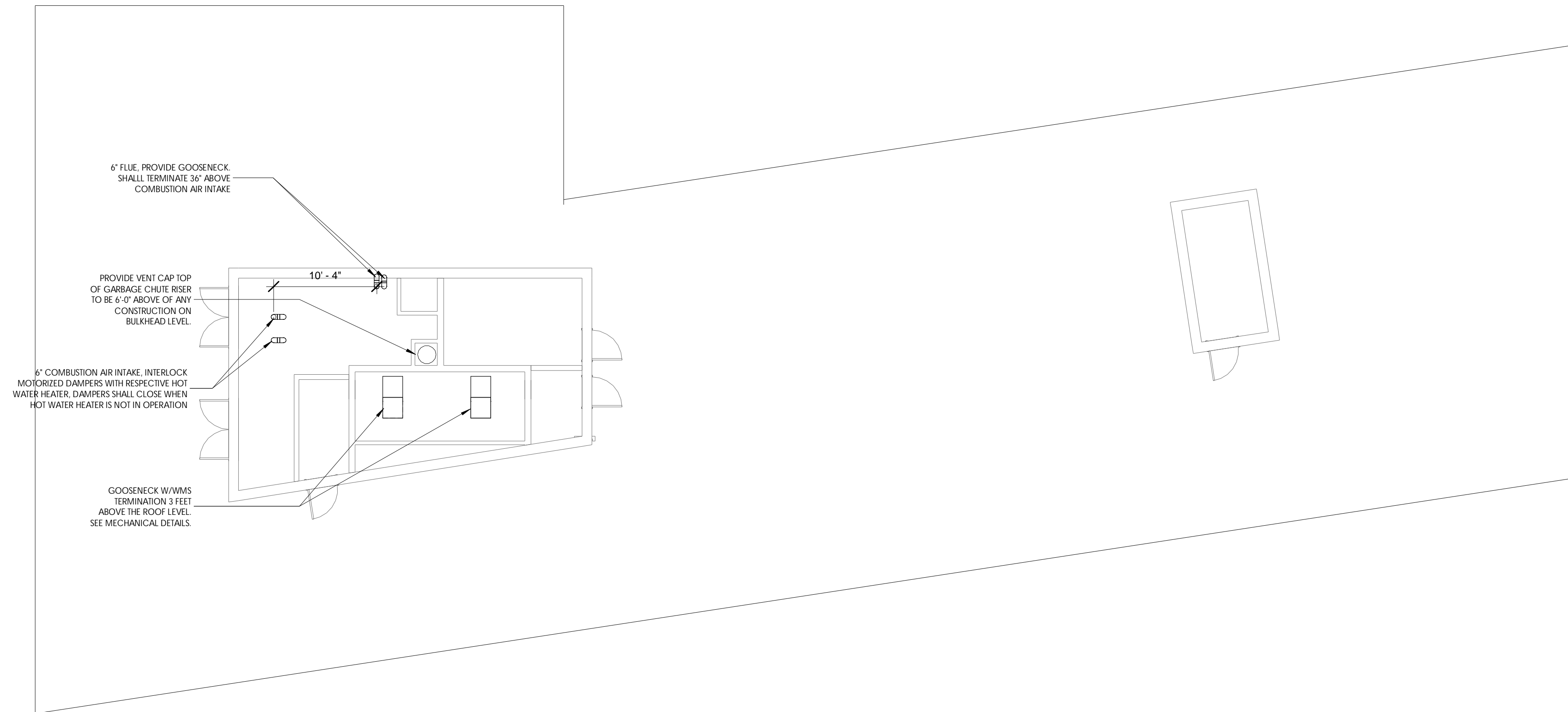
1 ROOF MECHANICAL PLAN  
1/8" = 1'-0"



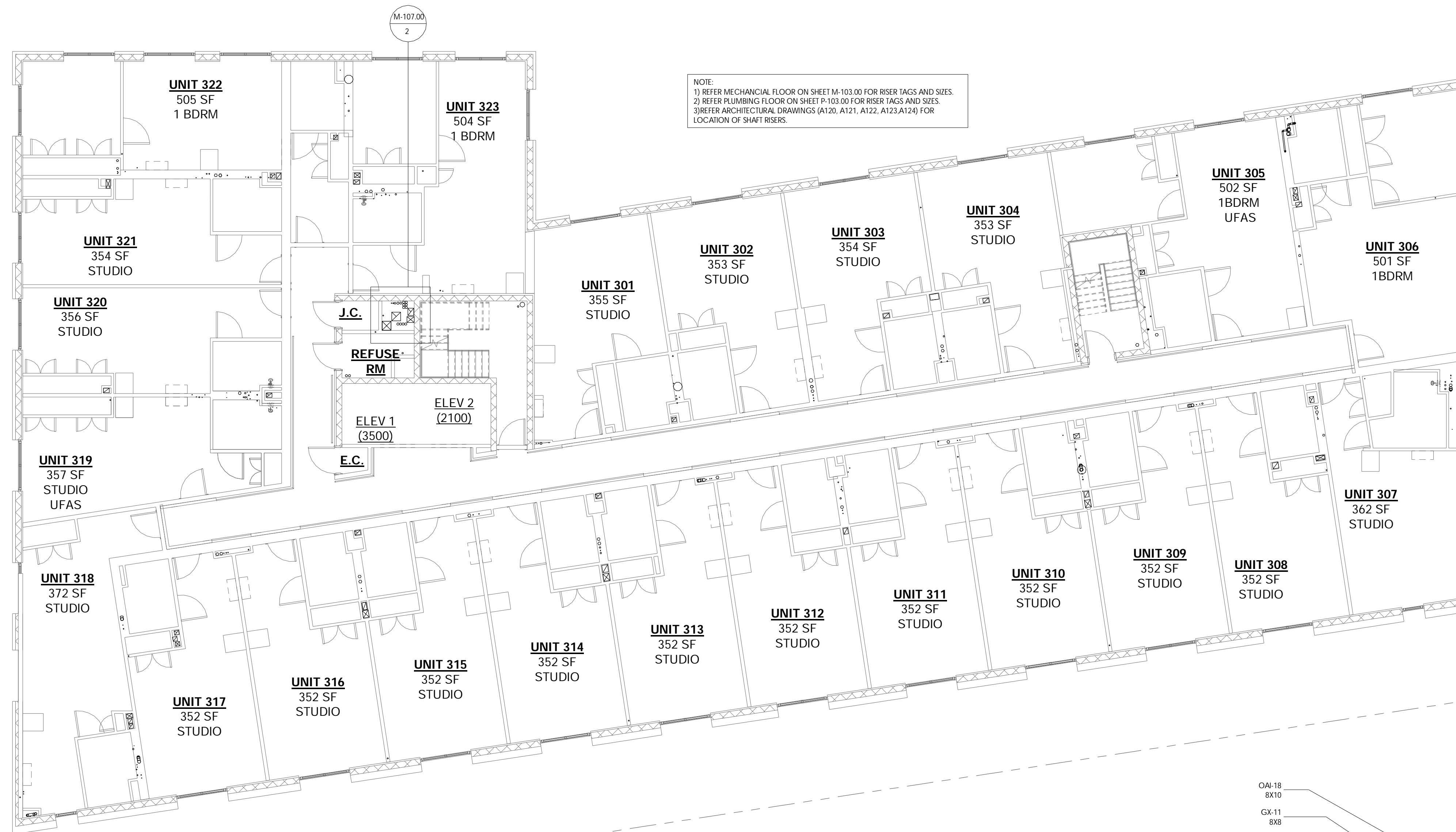
2 Roof Shaft 3D View

GENERAL NOTES:

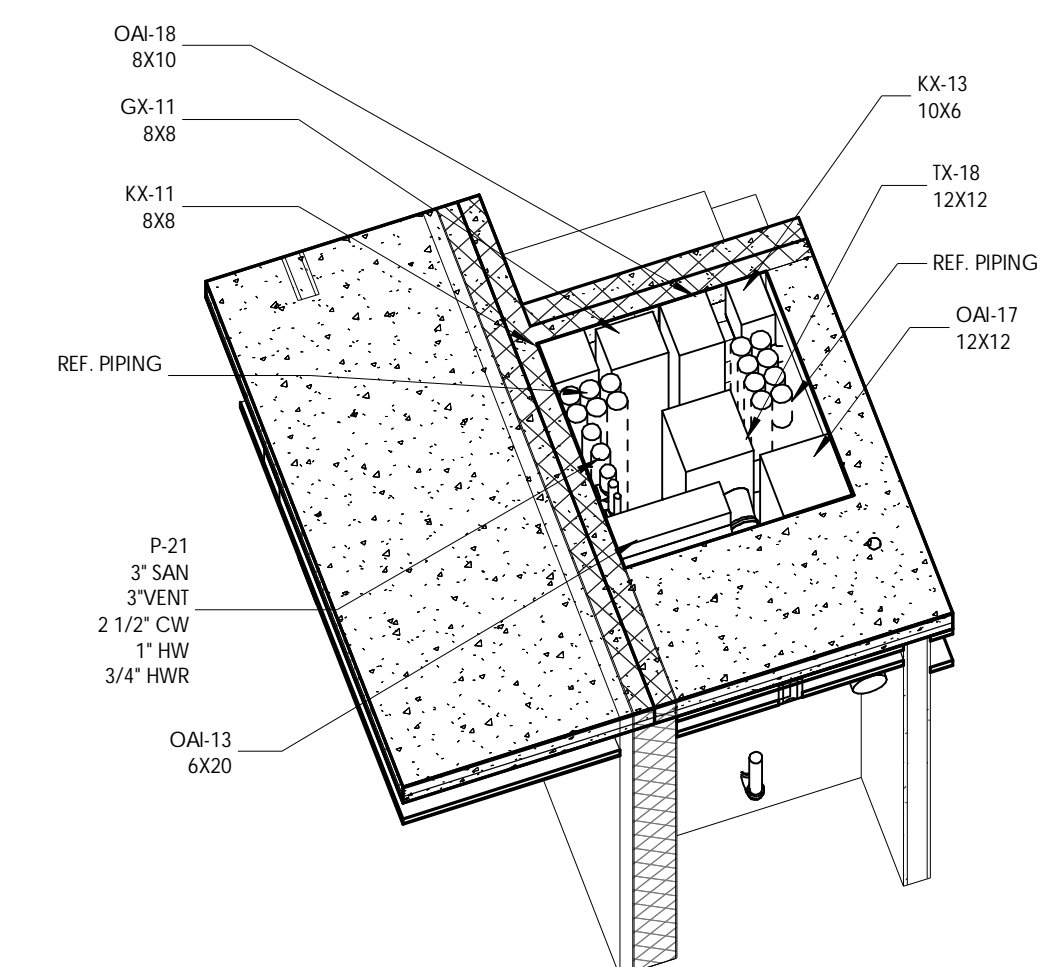
- 1) ALL EXHAUST SHALL BE LOCATED MINIMUM 3 FEET FROM LOT LINE.
- 2) AIR CONDITIONER UNIT AND ERV SHALL NOT PRODUCE NOISE LEVELS IN EXCESS OF 42 DECIBELS FOR A SINGLE AIR CIRCULATING DEVICE AND 45 DECIBELS FOR THE CUMULATIVE NOISE LEVEL OF MULTIPLE AIR CIRCULATING DEVICES AS MEASURED 3 FEET FROM THE NOISE SOURCE AT AN OPEN DOOR OR WINDOW OF A NEARBY RESIDENCE.
- 3) PROVIDE UV PROTECTED & WEATHER PROOF COATING FOR ALL EXTERIOR DUCTWORK AND PIPING INSULATION AND DUCT CONNECTORS
- 4) AIR INTAKE SHALL BE LOCATED 10 FEET AWAY FROM LOTLINE AND ANY EXHAUST.
- 5) COORDINATE HEAT LOAD REJECTION WITH ELEVATOR CONSULTANT. NYE DESIGNED BASED ON 12,000 BTUS/HR.
- 6) PROVIDE 2" INSULATION FOR ALL OUTSIDE AIR DUCTS.



① BULKHEAD MECHANICAL PLAN  
1/8" = 1'-0"



① TYPICAL FLOOR SHAFT COORDINATION  
1/8" = 1'-0"



② SHAFT-1