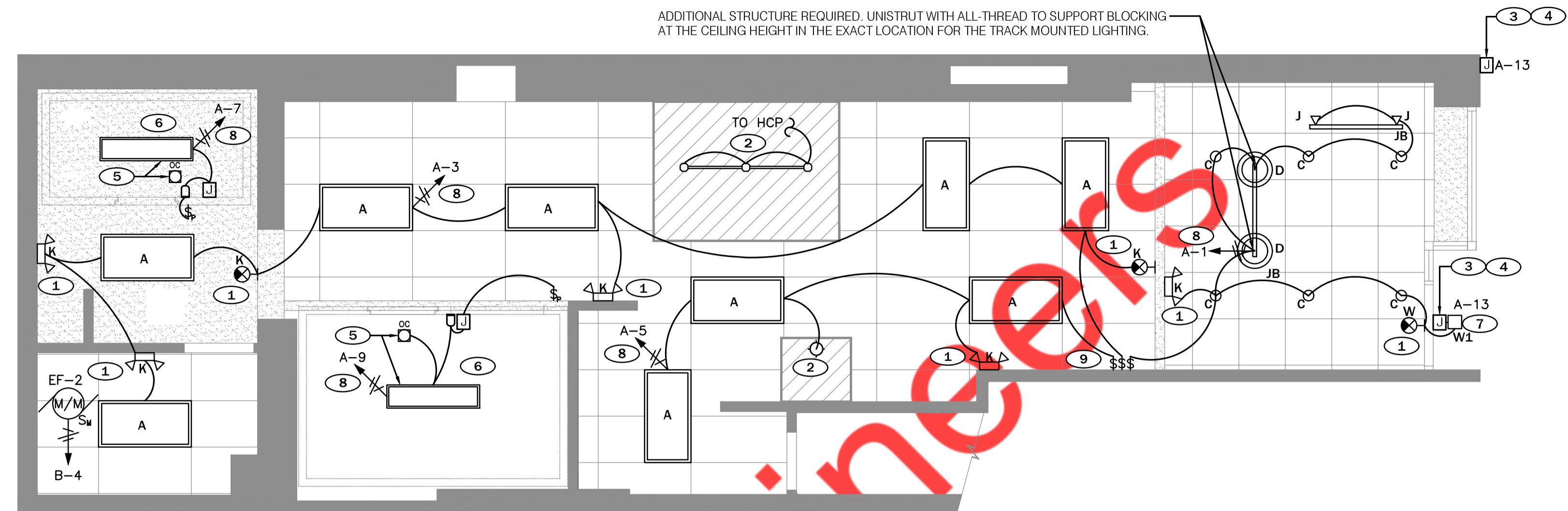


- ① INSTALL ALL EMERGENCY AND EXIT LIGHTING ON UNSWITCHED LEG OF CIRCUIT A-3.
- ② EXHAUST HOOD LIGHTS SUPPLIED WITH HOOD AND MTD IN PRE-WIRED J-BOX. COMPLETE CIRCUITING PER DETAIL 4/E-400.00.
- ③ J-BOX FOR ILLUMINATED SIGN. VERIFY ELECTRICAL REQUIREMENTS AND EXACT LOCATIONS FOR J-BOX WITH ARCHITECTURAL ELEVATIONS AND SIGN VENDOR.
- ④ CONTROLLED BY EXTERIOR SIGNAGE CONTACTOR. REFER TO EXTERIOR SIGNAGE CONTROL DIAGRAM ON SHEET E-400.00
- ⑤ LIGHTING FIXTURES & SWITCHES FOR COOLER/FREEZER ARE PROVIDED WITH COOLER/FREEZER. FIXTURES & SWITCHES ARE TO BE INSTALLED BY ELECTRICAL CONTRACTOR PER MANUFACTURERS REQUIREMENTS AND N.E.C. ARTICLE 300-7. CONTRACTOR TO PROVIDE 100W A19 LAMPS FOR COOLER AND FREEZER FIXTURES.
- ⑥ ELECTRICAL CONTRACTOR SHALL PROVIDE AND INSTALL WIRING INSIDE COOLER/FREEZER PER MANUFACTURERS REQUIREMENTS AND N.E.C. ARTICLE 300-7 (1999). ALL CONDUITS ENTERING OR LEAVING COOLER/FREEZER SHALL BE PROVIDED WITH SEAL-OFF FITTINGS WITH COMPOUND PER N.E.C. 300-(7A)(1999).
- ⑦ ALL EXTERIOR LIGHTING SHALL BE CIRCUITED THROUGH EXTERIOR LIGHTING CONTACTOR/PHOTOCELL CONTROL PANEL.
- ⑧ ROUTE CIRCUIT THROUGH LIGHT SWITCH. SEE DRAWING SHEET E-400.00 FOR CONTROLS.
- ⑨ PROVIDE 120V, 1P/20 AMP WALL SWITCH AT 48" AFF FOR FRONT OF HOUSE LIGHTING AND EXTERIOR SIGNAGE LIGHTING. SEE DRAWING SHEET E1.0 FOR CONTROLS. LABEL SWITCHES.



| TYPE | QTY | LOCATION | MANUFACTURE / ITEM NUMBER | FIXTURE DESCRIPTION | LAMPS | | MOUNTING | VOLTAGE | WATTAGE | REMARKS |
|------|-----|---------------|---|--------------------------|-------|-------------------|-------------|---------|---------|---------------------------------------|
| | | | | | # | TYPE | | | | |
| A | 9 | KITCHEN | CREE: C-TR-C-FP24-50L-35K-WH | 2X4 FLAT PANEL | 1 | INTERGRAL LED | LAY-IN GRID | 120 | 41 | |
| C | 6 | ENTRY | TCP: LED 14D R5630K B95 / ELITE: B 6IC-AT-W | 6" DOWN LIGHT | 1 | INTERGRAL LED | RECESSED | 120 | 14 | BLACK FINISH |
| D | 2 | ENTRY | ACCUSERVE / A31001A | TIFFANY PEDANT | 1 | LED A 19 E26 BASE | TRACK | 120 | 8 | REQUIRE EXTRA STRUCTURE ABOVE CEILING |
| J | 2 | ENTRY | LF ILLUMINATION: TXA 01-A-J-06C-92-30-M-D1-1-BB | INTERGRAL LED TRACK HEAD | 1 | INTERGRAL LED | TRACK | 120 | 6 | BLACK FINISH |
| JB | 1 | ENTRY | CONTECH: LT4B, LA108 | 4" TRACK | - | N/A | CEILING | 120 | N/A | BLACK FINISH |
| K | 6 | KITCHEN/ENTRY | BEST LIGHTING: CLPU-1-R-W-RC | EXIT/EMERGENCY COMBO | 2 | INTERGRAL LED | WALL | 120 | 3 | WHITE FINISH |
| W | 1 | ENTRY | BEST LIGHTING: CLPU-1-R-W-RC | EXIT/EMERGENCY COMBO | 2 | INTERGRAL LED | WALL | 120 | 3 | WHITE FINISH |
| W1 | 1 | EXTERIOR | BEST LIGHTING: RHLED2-WP-CLPCXTE | EXTERIOR EMERGENCY HEADS | 2 | INTERGRAL LED | WALL | 9.6 | 4 | REMOTE POWERED BY TYPE W |

(ALL FIXTURES AND LAMPS SUPPLIED BY OWNER)
 (ALL FIXTURES INSTALLED BY CONTRACTOR)

Property of NY Engineering

LIGHTING NATIONAL ACCOUNT:
 CAPITOL LIGHT
 PRIMARY CONTACT: KEVIN POLLEY
 PHONE: (860) 670-4595
 EMAIL: kevin.polley@capitollight.com

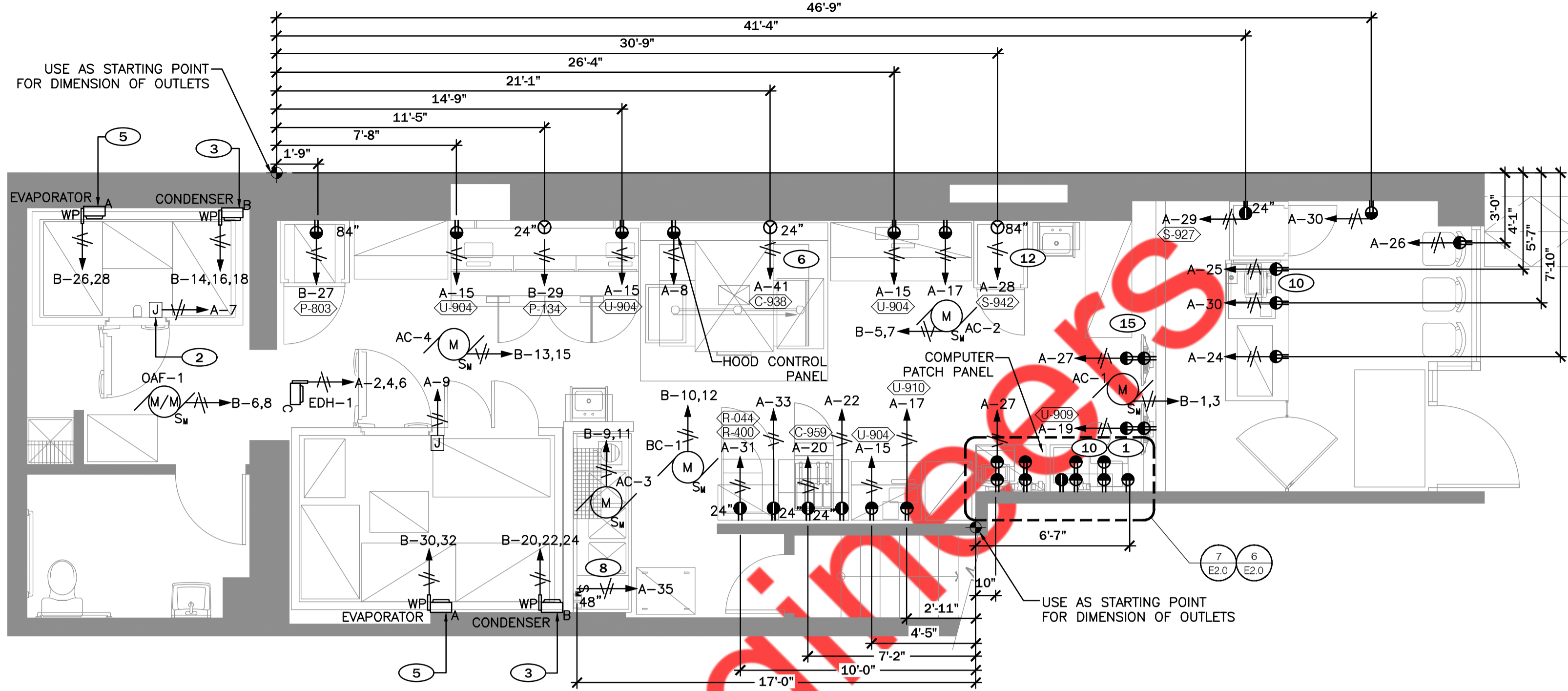
CAPITOL LIGHT HAS AGREED TO PROVIDE A PHOTOMETRICS STUDIES FOR ALL DELCOS. ONCE AN EQUIPMENT PLAN IS COMPLETE, EMAIL THE AS-BUILT AND BASE PLANS TO ACCUSERV FOR PHOTOMETRIC. EACH SPACE WILL BE DESIGNED FOR A MIN. OF 50 FOOT CANDLES THROUGH OUT THE SPACE. CAPITOL LIGHT HAS AGREED TO RETURN THE PHOTO METRIC WITH LIGHTING LAYOUT WITHIN 48 HOURS.

ELECTRICAL EQUIPMENT SCHEDULE

| ITEM | DESCRIPTION | VOLTAGE/PHASE | AMPS | WATTAGE | PLUG | A.F.F. | CIRCUIT # |
|-------|-------------------------|---------------|-------|---------|--------|----------|-----------|
| C-959 | GAS OPEN FRYER | 120V/1PH | 6.1 | 700 | 5-15P | 24" | A-20 |
| C-959 | GAS OPEN FRYER FILTER | 120V/1PH | 0.7 | 80 | 5-15P | 24" | A-22 |
| S-927 | BEVERAGE COOLER | 120V/1PH | 17.39 | 2000 | 5-15P | 24" | A-29 |
| R-044 | UNDERCOUNTER FREEZER | 120V/1PH | 6.43 | 740 | 5-15P | 24" | A-1 |
| C-938 | OVEN | 120V/1PH | 8.70 | 1000 | 5-15P | - | A-41 |
| P-803 | 1-COMP PROOFER | 115V/1PH | 15.6 | 1780 | 5-20P | 84" | A-37 |
| P-134 | MAKE TABLE | 120V/1PH | 17.8 | 2050 | 5-15P | - | A-39 |
| R-400 | WINGSTREET REFRIGERATOR | 120V/1PH | 5.82 | 670 | 5-15P | - | A-33 |
| N-X2 | DISHWASHER | 120V/1PH | 12.0 | 1380 | DIRECT | 48" | A-35 |
| S-942 | HOT HOLD | 120V/1PH | 22.2 | 2550 | L5-30P | 84" | A-28 |
| U-904 | MONITOR | 120V/1PH | 2.1 | 250 | 5-15P | PER PLAN | A-51 |

- ① PROVIDE 20A, 120V, A QUAD ISOLATED GROUND RECEPTACLE FOR DEMARK TELEPHONE TERMINAL BOARD AND TELEPHONE SYSTEM TERMINAL BOARD.
- ② NOT USED.
- ③ CONDENSING UNITS TO COOLER/FREEZER MOUNTED ON FIELD FABRICATED PLATFORM ON THE CELLAR. E.C. TO FIELD VERIFY THE EXACT LOCATION IN CELLAR IN COORDINATION WITH ARCHITECT/OWNER.
- ④ NOT USED.
- ⑤ COOLER EVAPORATOR - 20A, 1P, 120V, WEATHERPROOF MOTOR RATED SWITCH PROVIDE CONNECTIONS TO CONDENSER PER MANUFACTURERS REQUIREMENTS.
- ⑥ OVENS - 20A, 1P, 120V, MANUAL MOTOR STARTING SWITCH WITHOUT OVERLOADS WITH STAINLESS STEEL LOCKOUT AND TAG OUT COVER PLATE. PROVIDE RECEPTACLES TO MATCH OVEN PLUG CONFIGURATION IF OVENS ARE PROVIDE WITH FACTORY INSTALLED CORD AND PLUG.
- ⑦ SEE DRAWING SHT E1.0 FOR EXHAUST FAN INTERLOCK DETAILS.
- ⑧ DISHWASHER - 20A, 1P, 120V, MANUAL MOTOR STARTING SWITCH WITHOUT OVERLOADS WITH STAINLESS STEEL LOCKOUT AND TAG OUT COVER PLATE.
- ⑨ NOT USED.
- ⑩ 20A, 115V, IP, 3 WIRE ISOLATED GROUND RECEPTACLE, NEMA 5-20P LOCATED WITHIN 11" OF CENTERLINE OF COUNTER.
- ⑪ TWO CIRCUIT POWER POLE EQUAL TO HUBBELL HBLP SERIES WITH (2) 20 AMP RECEPTACLES.
- ⑫ 30A, 120V, 1P, 2 WIRE NEMA L5-30P RECEPTACLE.
- ⑬ PROVIDE CONNECTION FROM DUCT SMOKE ANNUNCIATORS TO DUCT SMOKE DETECTORS.
- ⑭ NOT USED.
- ⑮ RECEPTACLE TO BE PROVIDED ONLY WHEN CCTV EQUIPMENT IS REQUIRED. MOUNT RECEPTACLE AT 90°.
- ⑯ SWITCH EXHAUST FAN WITH LIGHT IN RESTROOM.
- ⑰ ALL EXISTING ELECTRICAL CONNECTION SHALL REMAIN. E.C. TO COORDINATE WITH ARCHITECT FOR MORE DETAIL.

KEYED NOTES 6



1 ELECTRICAL POWER PLAN - FIRST FLOOR
1/4"=1'-0"

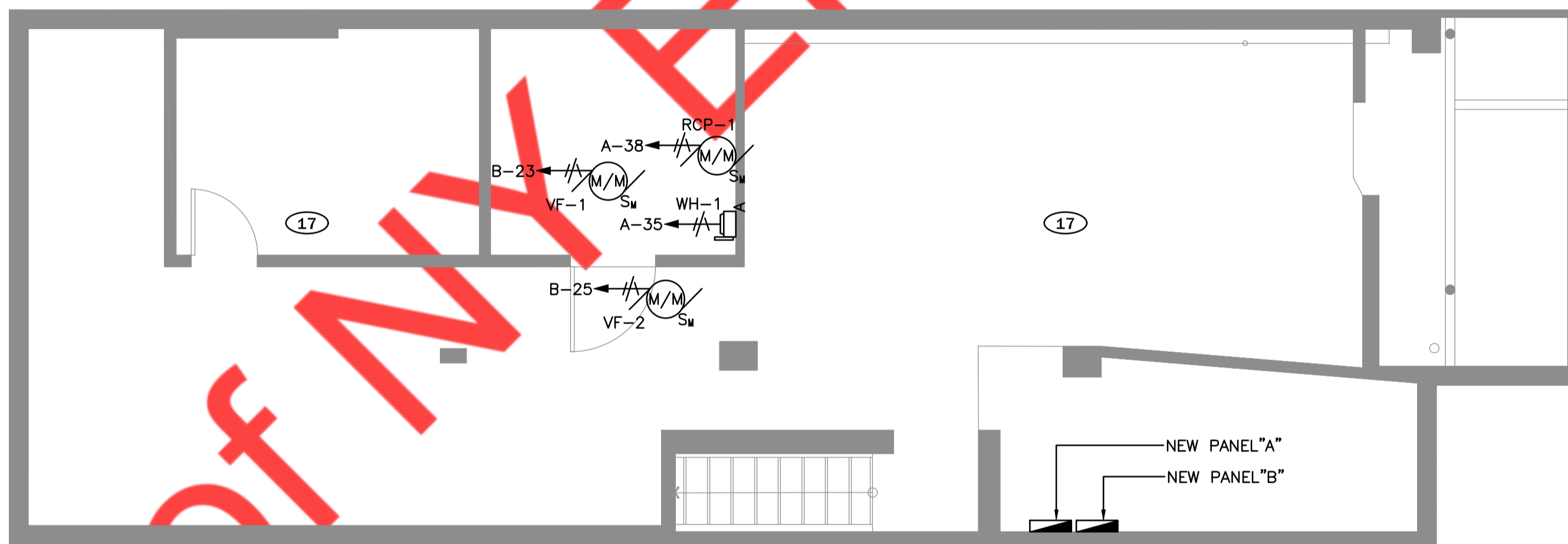
POWER PLAN - FIRST FLOOR 1/4" = 1'-0" 1

- ① ALL CONNECTIONS AND ELECTRICAL EQUIPMENT LISTED IN SCHEDULE SHALL BE PROVIDED AND INSTALLED BY THE ELECTRICAL CONTRACTOR. FIELD VERIFY CONNECTION REQUIREMENTS AND EQUIPMENT PROVIDED BY OTHERS PRIOR TO ROUGH-IN.
- ② REFER TO MECHANICAL DRAWINGS AND SPECIFICATIONS FOR THE REQUIREMENTS ASSOCIATED WITH WIRING AND CONNECTIONS OF INTERLOCKING, THERMOSTAT LOCATIONS, EXHAUST FAN CONTROL SWITCHES, AND OTHER CONTROLS OF MECHANICAL EQUIPMENT.
- ③ PROVIDE DUCT MOUNTED SMOKE DETECTORS IN THE RETURN DUCT. VERIFY THE REQUIRED QUANTITY OF DUCT SMOKE DETECTORS FOR EACH UNIT WITH DUCTWORK LAYOUT TO MEET NFPA REQUIREMENTS. REFER TO SMOKE MONITORING SYSTEM NOTES ON SHEET E1.0.

MECHANICAL EQUIPMENT CONNECTION SCHEDULE NOTES 7

- A. HORIZONTAL DIMENSIONS TO J-BOXES ARE FROM FACE OF STUD CENTER OF BOX, U.O.N. VERTICAL DIMENSION OF 24" IS FROM FINISH FLOOR TO CENTER OF J-BOX, U.O.N.
- B. PROVIDE STAINLESS STEEL OUTLETS, SWITCHES AND COVER PLATES IN B.O.H. PROVIDE BLACK OUTLETS, SWITCHES AND COVER PLATES IN F.O.H.
- C. ALL OUTLETS AND J-BOXES BEHIND SIGNAGE SHALL BE RECESSED OR FLUSH WITH ADJACENT BUILDING SURFACES.
- D. E.C. SHALL COORDINATE FINAL LOCATION OF MECHANICAL EQUIPMENTS WITH RESPECTIVE CONTRACTORS IN THE FIELD.

MECHANICAL EQUIPMENT CONNECTION SCHEDULE NOTES 8

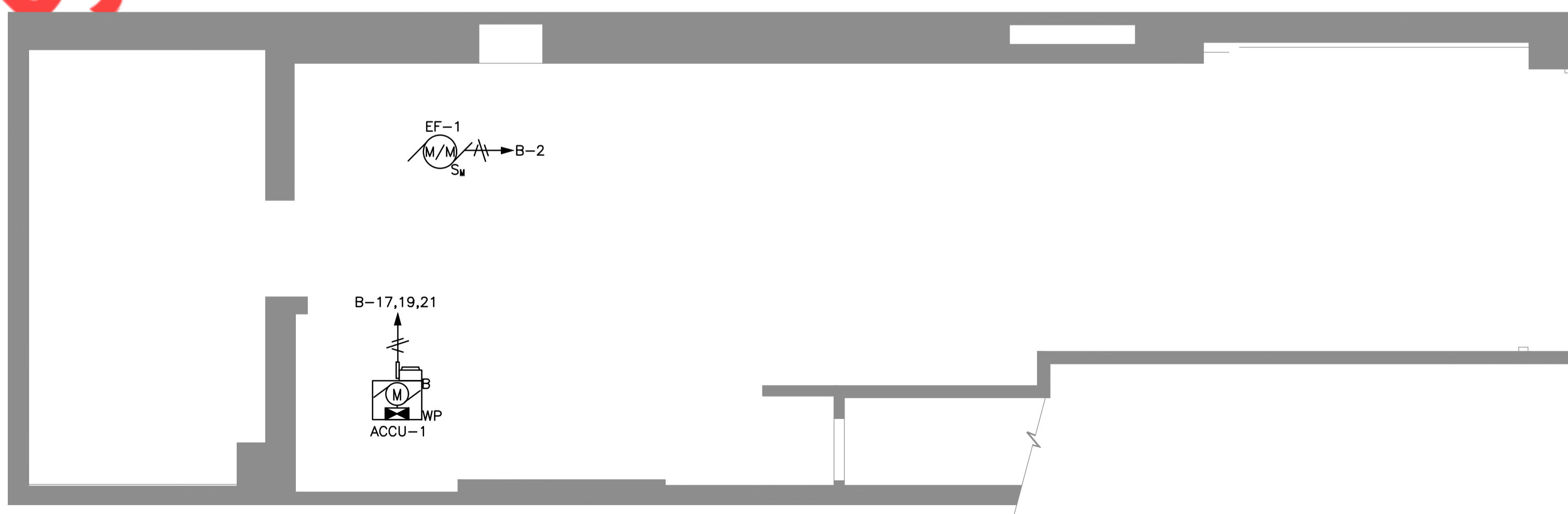


2 ELECTRICAL POWER PLAN - CELLAR
1/4"=1'-0"

POWER PLAN - CELLAR 1/4" = 1'-0" 2

| UNIT DESIG. | UNIT VOLTAGE | H.P. | FLA | KVA | CIRCUIT NUMBER | LOAD | PANEL DEVICE | DEVICE AT UNIT | S E T S | FEEDER DESCRIPTION OR SEE THE FEEDER SCHEDULE | REMARKS OR SEE THE INDICATED NOTES BELOW | | | |
|---|--------------|------|-----|-------|----------------|------|--------------|----------------|---------|---|--|---------------------------|---------------------------|--------------------|
| AIR CONDITIONER OUTDOOR UNIT (HEAT RECOVERY) | | | | | | | | | | | | | | |
| ACCU-1 | 208/3 | - | - | 19.29 | SEE PLANS | 40 | 3 | 40 | 3 | NEMA 3R | 1 REFER TO PANEL SCHEDULE | SEE NOTE #D | | |
| EXHAUST FANS | | | | | | | | | | | | | | |
| EF-1 | 115/1 | 1/3 | - | 0.83 | SEE PLANS | 20 | 1 | 1 | 1 | NEMA 3R SWITCH | 1 REFER TO PANEL SCHEDULE | | | |
| EF-1 | 115/1 | 1/20 | - | 0.10 | SEE PLANS | 20 | 1 | 1 | 1 | NEMA 3R SWITCH | 1 REFER TO PANEL SCHEDULE | | | |
| OAF-1 | 208/1 | 1/3 | 3.2 | 0.83 | SEE PLANS | 20 | 2 | 2 | 1 | NEMA 3R SWITCH | 1 REFER TO PANEL SCHEDULE | | | |
| VF-1 | 115/1 | - | - | 0.10 | SEE PLANS | 20 | 1 | 1 | 1 | NEMA 3R SWITCH | 1 REFER TO PANEL SCHEDULE | | | |
| VF-2 | 115/1 | - | - | 0.10 | SEE PLANS | 20 | 1 | 1 | 1 | NEMA 3R SWITCH | 1 REFER TO PANEL SCHEDULE | | | |
| ELECTRIC DUCT HEATER | | | | | | | | | | | | | | |
| EDH-1 | 208/3 | - | - | 40 | SEE PLANS | 100 | 3 | 3 | 3 | NEMA 3R | 1 REFER TO PANEL SCHEDULE | | | |
| VRF HEAT RECOVERY BRANCH CONTROLLER SCHEDULE | | | | | | | | | | | | | | |
| BC-1 | 208/3 | - | - | 0.4 | SEE PLANS | 20 | 1 | 1 | 1 | NEMA 3R | 1 REFER TO PANEL SCHEDULE | | | |
| INDOOR UNIT | | | | | | | | | | | | | | |
| AC-1 | 208/1 | - | - | 1.08 | SEE PLANS | 20 | 1 | 1 | 1 | NEMA 3R | 1 REFER TO PANEL SCHEDULE | | | |
| AC-2 | 208/1 | - | - | 1.08 | SEE PLANS | 20 | 1 | 1 | 1 | NEMA 3R | 1 REFER TO PANEL SCHEDULE | | | |
| AC-3 | 208/1 | - | - | 0.48 | SEE PLANS | 20 | 1 | 1 | 1 | NEMA 3R | 1 REFER TO PANEL SCHEDULE | | | |
| AC-4 | 208/1 | - | - | 1.08 | SEE PLANS | 20 | 1 | 1 | 1 | NEMA 3R | 1 REFER TO PANEL SCHEDULE | | | |
| COOLER CONDENSER | | | | | | | | | | | | | | |
| CC-1 | 208/3 | - | 9.0 | 3.2 | SEE PLANS | 30 | 3 | 30 | 15 | 3 | NEMA 3R | 1 REFER TO PANEL SCHEDULE | AR-FUSE AS REQUIRED | |
| COOLER EVAPORATOR | | | | | | | | | | | | | | |
| CE-1 | 208/1 | - | - | 0.4 | SEE PLANS | 30 | 2 | - | - | 2 | MMS | SEE KEY NOTE #6 | 1 REFER TO PANEL SCHEDULE | FED FROM CONDENSER |
| COOLER CONDENSER | | | | | | | | | | | | | | |
| CC-2 | 208/3 | - | 9.0 | 3.2 | SEE PLANS | 30 | 3 | 30 | 15 | 3 | NEMA 3R | 1 REFER TO PANEL SCHEDULE | AR-FUSE AS REQUIRED | |
| COOLER EVAPORATOR | | | | | | | | | | | | | | |
| CE-2 | 1208/1 | - | - | 0.4 | SEE PLANS | 30 | 2 | - | - | 2 | MMS | SEE KEY NOTE #5 | 1 REFER TO PANEL SCHEDULE | FED FROM CONDENSER |

MECHANICAL EQUIPMENT CONNECTION SCHEDULE NOTES 5



3 ELECTRICAL POWER PLAN - ROOF
1/4"=1'-0"

POWER PLAN - ROOF 1/4" = 1'-0" 3

1 TELEPHONE COMPANY DEMARK BOARD - PROVIDE (1) 2" CONDUIT WITH PULL STRING FROM TELEPHONE TERMINAL BOARD TO TELEPHONE SERVICE ENTRANCE. PROVIDE SWEEPING 90° ELBOWS AT ALL TURNS. VERIFY SITE AND TELEPHONE COMPANY REQUIREMENTS PRIOR TO BIDDING. SEE ARCHITECTURAL ELEVATION DETAIL FOR SIZE AND MOUNTING.

2 PROVIDE (1) 2" CONDUIT WITH PULL STRING STUBBED UP ABOVE TO ACCESSIBLE CEILING FROM J-BOX AT COMPUTER WALL CABINET FOR DATA CABLES. PROVIDE SWEEPING 90° ELBOWS AT TURNS.

3 PROVIDE (1) PULL STRING STUBBED UP ABOVE TO ACCESSIBLE CEILING FROM EACH VOICE, VOICE/DATA AND DATA OUTLET. PROVIDE SWEEPING 90° ELBOWS AT ALL TURNS.

4 TELEPHONE TERMINAL BOARD FOR PIZZA HUT TELEPHONE SYSTEM LOCATION. SEE ARCHITECTURAL ELEVATION DETAIL FOR SIZE AND MOUNTING.

5 OVERHEAD TELEPHONE BELL PROVIDED BY PHONE INSTALLER.

6 PROVIDE (1) QUAD BOX FOR ALL LOW VOLTAGE LINES CENTERED UNDERCOUNTER.

7 PROVIDE (1) 3/4" CONDUIT WITH PULL STRING FOR CAT5 DSL FROM DEMARK TO THE OFFICE.

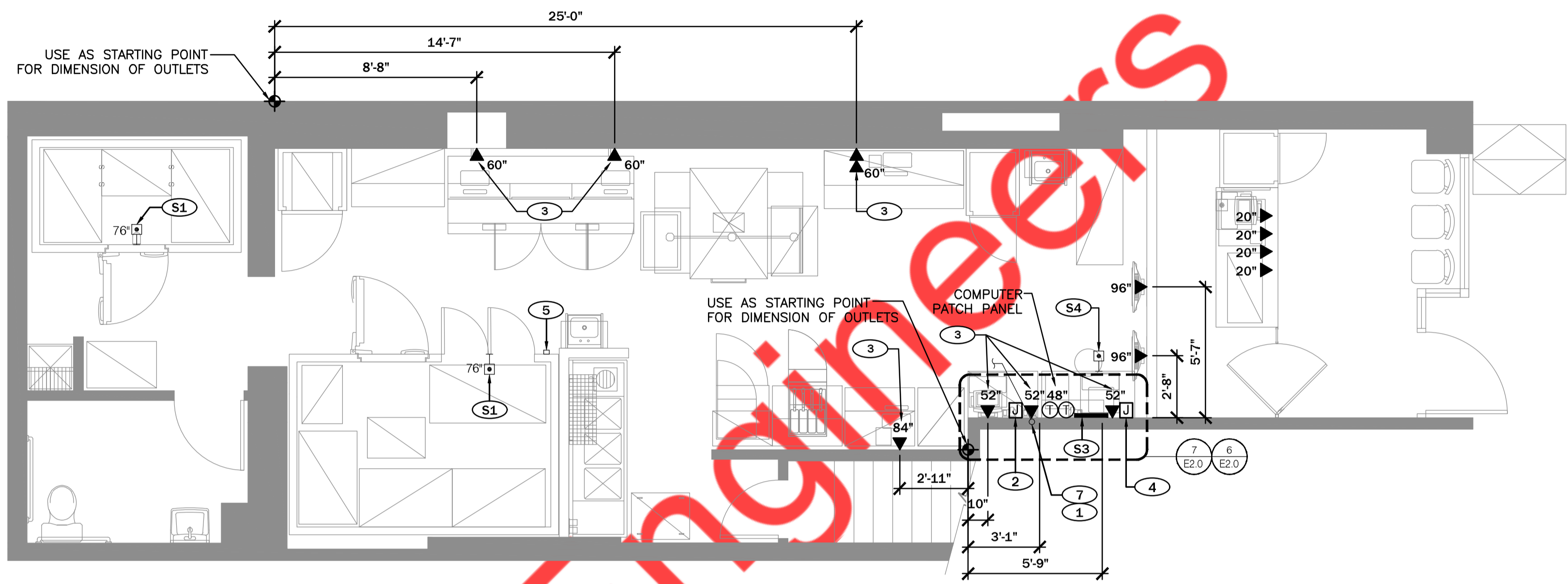
S1 HOLD UP BUTTON CENTERED ABOVE DOOR. MOUNT AT TOP OF JAMB WITH CONDUIT STUBBED UP ABOVE CEILING.

S2 HOLD UP BUTTON LOCATION (MOUNT 2 1/2" BEHIND COUNTER EDGE). VERIFY AND REQUIREMENTS WITH SECURITY PROVIDER.

S3 ALARM KEYPAD.

S4 HOLD UP BUTTON BY MANAGER DESK. VERIFY EXACT LOCATION AND REQUIREMENTS WITH SECURITY PROVIDER.

GENERAL NOTE:
HORIZONTAL DIMENSIONS TO DATA PULL J-BOXES ARE FROM FACE OF STUD CENTER OF BOX, U.O.N. THE VERTICAL DIMENSION OF 24" IS FROM FINISH FLOOR TO CENTER OF J-BOX, U.O.N.

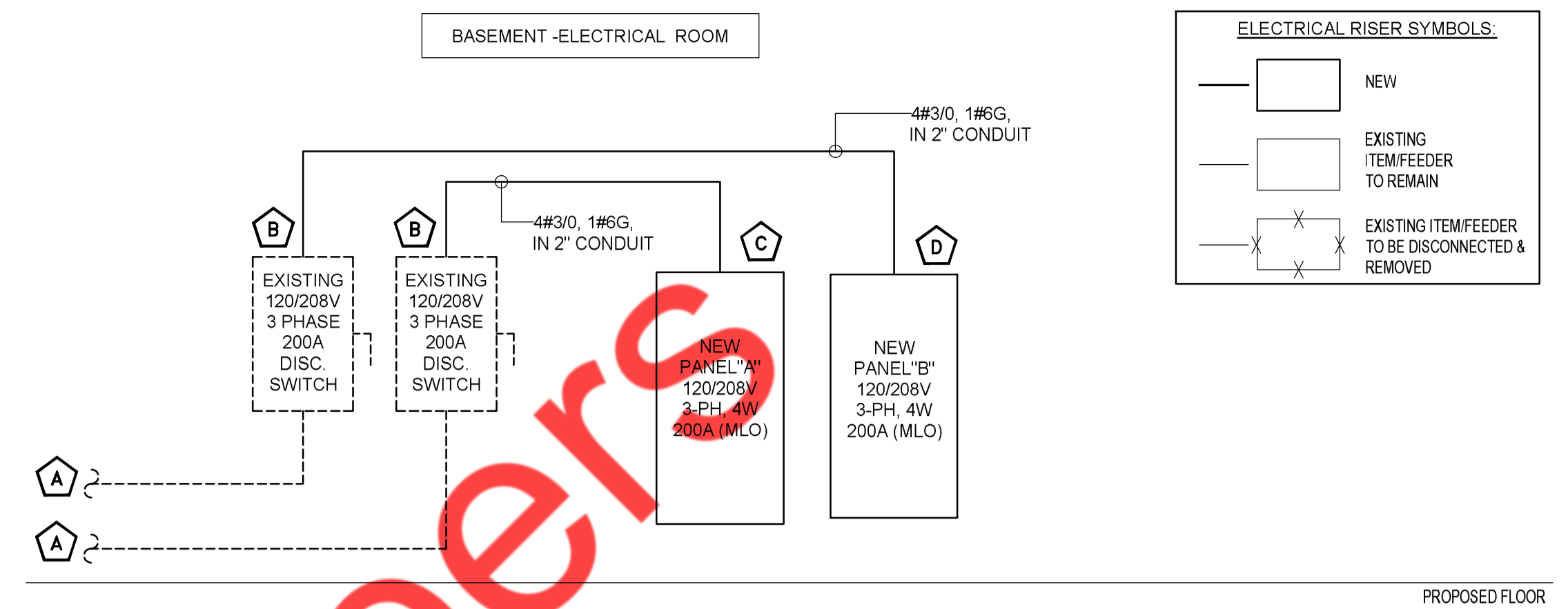


Property of MY ENGINEERS

| PANEL: A(NEW) | | | | | | | | | | MOUNTING: | | SURFACE | | | |
|----------------------------|-----------|--------------------------------------|-----------|----------------------|------------------------|-----------------|-------|-------------------|------------------------|-------------------------|-----------|------------------------------|-----------|----------------------------|--|
| 208Y/120 | | VOLTS, | | 3 | | PHASE, | | 4 | | WIRE | | LOCATION: | | ELECTRICAL ROOM (BASEMENT) | |
| MAIN CB | | NA | | MLO: | | 200A | | BUS: | | 225A | | MIN. | | A.I.C RATING: 22 ka | |
| CKT NO. | TRIP AMPS | DESCRIPTION OF LOAD | LOAD TYPE | LOAD (KVA) | MINIMUM BRANCH CIRCUIT | PER PHASE (KVA) | | | MINIMUM BRANCH CIRCUIT | LOAD (KVA) | LOAD TYPE | DESCRIPTION OF LOAD | TRIP AMPS | CKT NO. | |
| | | | | | | A | B | C | | | | | | | |
| 1 | 20 | LIGHTING-ENTRY | L | 0.12 | 2#10, #10G, 3/4"C | 9.45 | | | | 9.33 | H | | | 2 | |
| 3 | 20 | LIGHTING-KITCHEN & BOH | L | 0.26 | 2#10, #10G, 3/4"C | | 9.59 | | 3#4, #8G, 1"C | 9.33 | H | EDH-1 | | 4 | |
| 5 | 20 | LIGHTING-KITCHEN | L | 0.13 | 2#10, #10G, 3/4"C | | | 9.46 | | 9.33 | H | | | 6 | |
| 7 | 20 | LIGHTING, HEATER -WALK IN COOLER-1 | L | 1.00 | 2#12, #12G, 3/4"C | 1.18 | | | 2#12, #12G, 3/4"C | 0.18 | R | HOOD CONTROL PANEL | 20 | 8 | |
| 9 | 20 | LIGHTING, HEATER -WALK IN COOLER-2 | L | 1.00 | 2#12, #12G, 3/4"C | | 1.00 | | | | | SPARE | | 10 | |
| 11 | 20 | SPARE | | 1.20 | 2#12, #12G, 3/4"C | | | 1.20 | | | | SPARE | | 12 | |
| 13 | 20 | BUILDING SIGNAGE | L | 1.50 | 2#12, #12G, 3/4"C | 1.50 | | | | | | SPARE | | 14 | |
| 15 | 20 | KITCHEN MONITOR #U904 | R | 1.20 | 2#12, #12G, 3/4"C | | 1.20 | | | | | SPARE | | 16 | |
| 17 | 20 | SUS TICKET PRINTER #U-910 | R | 0.72 | 2#12, #12G, 3/4"C | | | 0.72 | | | | SPARE | | 18 | |
| 19 | 20 | ALARM SYSTEM PANEL #U-909 | R | 0.25 | 2#12, #12G, 3/4"C | 0.95 | | | 2#12, #12G, 3/4"C | 0.70 | E | GAS OPEN FRYER #C-959 | 20 | 20 | |
| 21 | 20 | MANAGERS DESK TERMINALS | R | 1.20 | 2#12, #12G, 3/4"C | | 1.28 | | 2#12, #12G, 3/4"C | 0.08 | E | GAS OPEN FRYER FILTER #C-959 | 20 | 22 | |
| 23 | 20 | TELEPHONE BOARD/DASH BOARD | R | 1.20 | 2#12, #12G, 3/4"C | | | 1.50 | 2#12, #12G, 3/4"C | 0.30 | R | SAFE #F-178 | 20 | 24 | |
| 25 | 20 | PRINTER #U-901 | R | 0.80 | 2#12, #12G, 3/4"C | 2.20 | | | 2#12, #12G, 3/4"C | 1.40 | R | SHOW WINDOW | 20 | 26 | |
| 27 | 20 | WCO MONITORS | R | 0.66 | 2#12, #12G, 3/4"C | | 3.21 | | 2#10, #10G, 3/4"C | 2.55 | E | HOT HOLD #S-942 | 30 | 28 | |
| 29 | 30 | BEVERAGE COOLER #S-927 | E | 2.00 | 2#10, #10G, 3/4"C | | | 2.36 | 2#12, #12G, 3/4"C | 0.36 | R | RECEPTACLE | 20 | 30 | |
| 31 | 20 | 1-DOOR U.C. FREEZER #R-044 | E | 0.74 | 2#12, #12G, 3/4"C | 0.92 | | | 2#12, #12G, 3/4"C | 0.18 | O | WH-1 | 20 | 32 | |
| 33 | 20 | 1-DOOR WINGSTREET REFRIGERATOR#R-400 | E | 0.67 | 2#12, #12G, 3/4"C | | 0.67 | | | | | SPARE | | 34 | |
| 35 | 20 | DISH WASHER #NXX2 | E | 1.38 | 2#12, #12G, 3/4"C | | | 1.38 | | | | SPARE | | 36 | |
| 37 | | SPARE | | | | 0.90 | | | 2#12, #12G, 3/4"C | 0.90 | O | RCP-1 | 20 | 38 | |
| 39 | | SPARE | | | | | 0.00 | | | | | SPARE | 20 | 40 | |
| 41 | 20 | OVEN #C-938 | E | 1.00 | 2#12, #12G, 3/4"C | | | 1.00 | | | | SPARE | 20 | 42 | |
| TOTAL CONNECTED LOAD (KVA) | | | | | | 17.10 | 16.95 | 17.62 | | | | | | | |
| LOAD CLASSIFICATION | | | | CONNECTED LOAD (KVA) | | DEMAND FACTOR | | DEMAND LOAD (KVA) | | PANEL TOTAL LOAD | | | | | |
| TOTLA LIGHTING | | | L | 4.01 | | 125% | | 5.01 | | | | | | | |
| TOTAL RECEPTACLE | | | R | 8.27 | | 100% | | 8.27 | | TOTAL CONNECTED LOAD | | 50.48 | KVA | | |
| TOTAL HVAC | | | H | 28.00 | | 100% | | 28.00 | | TOTAL DEMAND LOAD | | 48.28 | KVA | | |
| TOTAL MOTOR | | | M | 0.00 | | 100% | | 0.00 | | TOTAL CONNECTED CURRENT | | 140.27 | AMP | | |
| TOTAL KITCHEN/EQUIPMENTS | | | E | 9.12 | | 65% | | 5.93 | | TOTAL DEMAND CURRENT | | 134.18 | AMP | | |
| TOTAL OTHER/MISCELLANEOUS | | | O | 1.08 | | 100% | | 1.08 | | SYSTEM VOLTAGE | | 120/208 Wye | | | |

| PANEL: B(NEW) | | | | | | | | | | MOUNTING: | | SURFACE | | | |
|----------------------------|-----------|----------------------|-----------|----------------------|------------------------|-----------------|-------|-------------------|------------------------|-------------------------|-----------|-----------------------------|-----------|----------------------------|--|
| 208Y/120 | | VOLTS, | | 3 | | PHASE, | | 4 | | WIRE | | LOCATION: | | ELECTRICAL ROOM (BASEMENT) | |
| MAIN CB | | NA | | MLO: | | 200A | | BUS: | | 225A | | MIN. | | A.I.C RATING: 22 ka | |
| CKT NO. | TRIP AMPS | DESCRIPTION OF LOAD | LOAD TYPE | LOAD (KVA) | MINIMUM BRANCH CIRCUIT | PER PHASE (KVA) | | | MINIMUM BRANCH CIRCUIT | LOAD (KVA) | LOAD TYPE | DESCRIPTION OF LOAD | TRIP AMPS | CKT NO. | |
| | | | | | | A | B | C | | | | | | | |
| 1 | 20 | AC-1 | H | 0.54 | 2#12, #12G, 3/4"C | 1.37 | | | 2#12, #12G, 3/4"C | 0.83 | M | EF-1 | 20 | 2 | |
| 3 | 20 | AC-1 | H | 0.54 | 2#12, #12G, 3/4"C | | 0.64 | | 2#12, #12G, 3/4"C | 0.10 | M | EF-2 | 20 | 4 | |
| 5 | 20 | AC-2 | H | 0.54 | 2#12, #12G, 3/4"C | | | 0.96 | 2#12, #12G, 3/4"C | 0.42 | M | OAF-1 | 20 | 6 | |
| 7 | 20 | AC-2 | H | 0.54 | 2#12, #12G, 3/4"C | 0.96 | | | 2#12, #12G, 3/4"C | 0.42 | M | | 20 | 8 | |
| 9 | 20 | AC-3 | H | 0.24 | 2#12, #12G, 3/4"C | | 0.26 | | 2#12, #12G, 3/4"C | 0.02 | H | BC-1 | 20 | 10 | |
| 11 | 20 | AC-3 | H | 0.24 | 2#12, #12G, 3/4"C | | | 0.26 | 2#12, #12G, 3/4"C | 0.02 | H | | 20 | 12 | |
| 13 | 20 | AC-4 | H | 0.54 | 2#12, #12G, 3/4"C | 1.61 | | | 2#12, #12G, 3/4"C | 1.07 | H | | 20 | 14 | |
| 15 | 20 | AC-4 | H | 0.54 | 2#12, #12G, 3/4"C | | 1.61 | | 3#10, #10G, 3/4"C | 1.07 | H | WALK IN COOLER CONDENSER-1 | 30 | 16 | |
| 17 | 20 | ACCU-1 | H | 6.43 | 2#8, #10G, 3/4"C | | | 7.50 | | 1.07 | H | | 20 | 18 | |
| 19 | 20 | ACCU-1 | H | 6.43 | 2#8, #10G, 3/4"C | 7.50 | | | | 1.07 | H | | 20 | 20 | |
| 21 | 20 | ACCU-1 | H | 6.43 | 2#8, #10G, 3/4"C | | 7.50 | | 3#10, #10G, 3/4"C | 1.07 | H | WALK IN COOLER CONDENSER-2 | 30 | 22 | |
| 23 | 20 | VF-1 | M | 0.10 | 2#12, #12G, 3/4"C | | | 1.17 | | 1.07 | H | | 20 | 24 | |
| 25 | 20 | VF-2 | M | 0.10 | 2#12, #12G, 3/4"C | 0.50 | | | 2#10, #10G, 3/4"C | 0.40 | H | WALK IN COOLER EVAPORATOR-1 | 20 | 26 | |
| 27 | 30 | 1-COMP PROOFER#P-803 | E | 1.78 | 2#10, #10G, 3/4"C | | 2.18 | | | 0.40 | H | | 20 | 28 | |
| 29 | 30 | MAKE TABLE #P-134 | E | 2.05 | 2#10, #10G, 3/4"C | | | 2.45 | 2#10, #10G, 3/4"C | 0.40 | H | WALK IN COOLER EVAPORATOR-2 | 20 | 30 | |
| 31 | | SPARE | | | | 0.40 | | | 2#10, #10G, 3/4"C | 0.40 | H | | 20 | 32 | |
| 33 | | SPARE | | | | | 0.00 | | | | | SPARE | | 34 | |
| 35 | | SPARE | | | | | | 0.00 | | | | SPARE | | 36 | |
| 37 | | SPARE | | | | 0.00 | | | | | | SPARE | | 38 | |
| 39 | | SPARE | | | | | 0.00 | | | | | SPARE | | 40 | |
| 41 | | SPARE | | | | | | 0.00 | | | | SPARE | | 42 | |
| TOTAL CONNECTED LOAD (KVA) | | | | | | 12.33 | 12.18 | 12.32 | | | | | | | |
| LOAD CLASSIFICATION | | | | CONNECTED LOAD (KVA) | | DEMAND FACTOR | | DEMAND LOAD (KVA) | | PANEL TOTAL LOAD | | | | | |
| TOTLA LIGHTING | | | L | 0.00 | | 125% | | 0.00 | | | | | | | |
| TOTAL RECEPTACLE | | | R | 0.00 | | 100% | | 0.00 | | TOTAL CONNECTED LOAD | | 36.84 | KVA | | |
| TOTAL HVAC | | | H | 31.05 | | 100% | | 31.05 | | TOTAL DEMAND LOAD | | 35.50 | KVA | | |
| TOTAL MOTOR | | | M | 1.96 | | 100% | | 1.96 | | TOTAL CONNECTED CURRENT | | 102.38 | AMP | | |
| TOTAL KITCHEN/EQUIPMENTS | | | E | 3.83 | | 65% | | 2.49 | | TOTAL DEMAND CURRENT | | 98.66 | AMP | | |
| TOTAL OTHER/MISCELLANEOUS | | | O | 0.00 | | 100% | | 0.00 | | SYSTEM VOLTAGE | | 120/208 Wye | | | |

E.C. TO FIELD VERIFY THE EXACT A.I.C RATING AS PER AVAILABLE FAULT LEVEL IN COORDINATION WITH UTILITY COMPANY / EXISTING DISTRIBUTION. BASE BID ACCORDINGLY. INFORM ENGINEER FOR ANY DISCREPANCY PRIOR COMMENCING ANY WORK.



ELECTRICAL RISER KEYED WORK NOTES:

- A EXISTING 120/208V, 3 PHASE, 200A, ELECTRICAL SERVICE FOR SPACE TO REMAIN. E.C. SHALL CO-ORDINATE WITH BASE BUILDING/OWNER TO VERIFY THE OPERABLE CONDITION, EXACT RATING AND LOCATION OF ELECTRICAL SERVICE. REPLACE IF FOUND INOPERABLE. BASE BID ACCORDINGLY.
- B EXISTING 120/208V, 3 PHASE, 200A, ELECTRICAL DISCONNECT SWITCH LOCATED AT BASEMENT ELECTRICAL ROOM. E.C. SHALL CO-ORDINATE WITH BASE BUILDING/OWNER TO VERIFY THE OPERABLE CONDITION, EXACT RATING AND LOCATION. REPLACE IF FOUND INOPERABLE. BASE BID ACCORDINGLY.
- C NEW 200A (MLO), 120/208V, 3-PHASE ELECTRICAL PANEL "A". E.C. SHALL COORDINATE EXACT LOCATION WITH ARCHITECT/OWNER.
- D NEW 200A (MLO), 120/208V, 3-PHASE ELECTRICAL PANEL "B". E.C. SHALL COORDINATE EXACT LOCATION WITH ARCHITECT/OWNER.

NOTE:

1. ELECTRICAL CONTRACTOR TO COORDINATE FAULT CURRENT (Isc) RATING WITH UTILITY COMPANY AND AHJ PRIOR TO COMMENCING ANY WORK.
2. E.C. SHALL VERIFY INCOMING SERVICE AMPERAGE, WIRE SIZING AND DISTRIBUTION.

ELECTRICAL RISER DIAGRAM 1

NATIONAL ACCOUNTS: SWITCHGEAR

INSTALL STANDARD PACKAGE. SUPPLY and INSTALL NON-STANDARD COMPONENTS.

CORPORATE DEVELOPMENT FRANCHISE DEVELOPMENT

NATIONAL ACCOUNT SET UP THROUGH CAPITAL LIGHTING FOR THE SUPPLY & DISTRIBUTION OF ELECTRICAL SWITCHGEAR. THE PACKAGE WILL CONSIST OF MAIN PANELS, SUB PANELS, DISCONNECTS, STARTERS, CONTRACTORS & LIGHTING CONTROL. EACH PROJECT WILL BE QUOTED INDIVIDUALLY TO ENSURE ACCURACY. SO PLEASE BE PREPARED TO SUBMIT ELECTRICAL SHEETS AT THE TIME OF INQUIRY.

PRIMARY CONTACT:

KEVIN POLLEY
CAPITOL LIGHT
SALES MANAGER
800.670.4595
6851 SNOWDEN ROAD
FORT WORTH, TX 76140
kevin.polley@capitollight.com
www.capitollight.com

ALLY TO ENSURE ACCURACY, SO PLEASE BE PREPARED TO SUBMIT ELECTRICAL SHEETS AT THE TIME OF INQUIRY. BE PREPARED AT TIME OF ORDER OR QUOTE REQUEST TO PROVIDE ALL PROJECT DETAILS REGARDING SPECIFICATIONS AND QUANTITIES AS SITE SPECIFIC DESIGN MAY NOT MATCH PROTOTYPICAL DESIGN.