

- A. REFER TO RISER DIAGRAM ON SHEET P-601.00 FOR ALL WASTE AND VENT SIZES.
- B. ALL EXISTING PLUMBING SERVICES IN CELLAR FLOOR SHALL REMAIN. G.C. TO COORDINATE WITH ARCHITECT FOR MORE DETAILS.

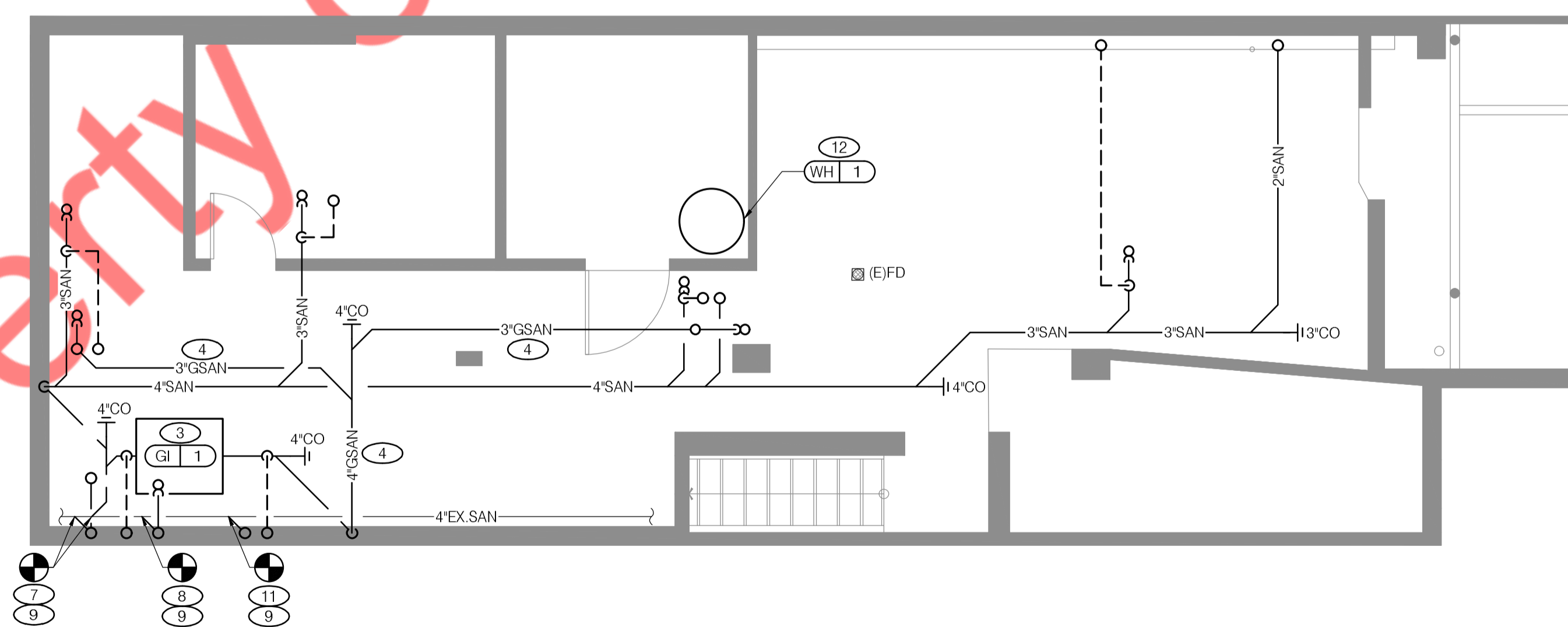
**PLUMBING WASTE AND VENT PLANS NOTES**

**3**

**FIRST FLOOR PLUMBING WASTE AND VENT PLAN** 1/4"=1'-0"

**1**

- ① ROUTE EVAPORATOR COIL CONDENSATE DRAIN WITH PROPER SLOPE TO HUB DRAIN AND PROVIDE PROPER AIR GAP. CONDENSATE DRAIN LINES SHALL BE ROUTED AS CLOSE TO FREEZER/COOLER CEILING AS POSSIBLE. DRAIN LINE SHALL BE A MINIMUM OF 74" A.F.F. TO AVOID CONFLICT WITH SHELVING. PROVIDE ELECTRICAL HEAT TAPE ON DRAIN LINE IN FREEZER. INSULATE DRAIN LINES WITH 3/4" FOAM RUBBER PER SPECIFICATIONS. SEE DETAIL 5/P-501.00.
- ② PROVIDE INDIRECT WASTE CONNECTION FROM 3-COMPARTMENT SINK TO FLOOR SINK WITH PROPER AIR GAP.
- ③ GREASE TRAP SHALL BE INSTALLED ABOVE FLOOR, UP ON BLOCK TO CONNECT THE OUTLET TO THE EXISTING SANITARY LINE RUNNING ABOVE THE CELLAR FLOOR SLAB AS PER FIELD CONDITIONS.
- ④ ENTIRE RUN OF DRAIN LINES TO INLET OF GREASE INTERCEPTOR AND OUTLET OF INTERCEPTOR TO CONNECTION AT SANITARY MAIN SHALL BE SCHEDULE 40 PVC DWV OR AS REQUIRED BY THE AUTHORITY HAVING JURISDICTION.
- ⑤ FLOOR DRAIN SHALL BE INSTALLED FLUSH WITH FINISHED FLOOR. DO NOT SLOPE FLOOR TO DRAIN.
- ⑥ PROVIDE FLOOR SINK IN LIEU OF HUB DRAIN WHERE REQUIRED BY LOCAL CODES.
- ⑦ CONNECT NEW 4" WASTE TO EXISTING 4" WASTE ABOVE FLOOR AS REQUIRED. CONTRACTOR TO FIELD VERIFY EXACT LOCATION AND CONNECTION REQUIREMENTS.
- ⑧ CONNECT NEW 3" WASTE TO EXISTING 4" WASTE ABOVE FLOOR AS REQUIRED. CONTRACTOR TO FIELD VERIFY EXACT LOCATION AND CONNECTION REQUIREMENTS.
- ⑨ THE CONTRACTOR SHALL VERIFY ALL EXISTING CONDITIONS FOR ROUTING AND CONNECTION OF WASTE LINES. ALL FIXTURE DRAINS AND TRAPS TO BE VENTED AS PER LOCAL CODE.
- ⑩ PROVIDE TRAP PRIMER TO FLOOR DRAIN. REFER TO DETAIL 1/P-501.00.
- ⑪ CONNECT NEW 2" WASTE TO EXISTING 4" WASTE ABOVE FLOOR AS REQUIRED. CONTRACTOR TO FIELD VERIFY EXACT LOCATION AND CONNECTION REQUIREMENTS.
- ⑫ CONNECT CONDENSATE DRAIN LINE FROM WATER HEATER DRAIN TO EXISTING SANITARY LINE.

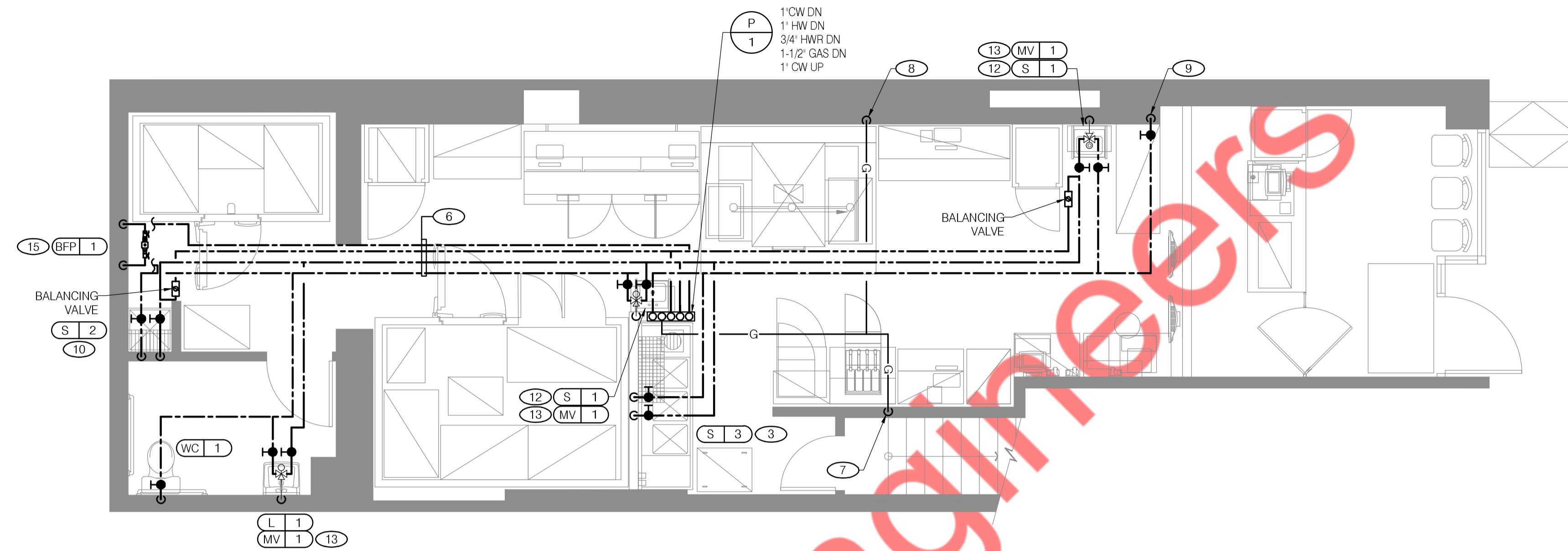


**KEY NOTES**

**4**

**CELLAR FLOOR PLUMBING WASTE AND VENT PLAN** 1/4"=1'-0"

**2**



- A. REFER TO RISER DIAGRAM ON SHEET P-601.00 FOR ALL WATER AND GAS SIZES.  
 B. ALL EXISTING PLUMBING SERVICES IN CELLAR FLOOR SHALL REMAIN. G.C. TO COORDINATE WITH ARCHITECT FOR MORE DETAILS.

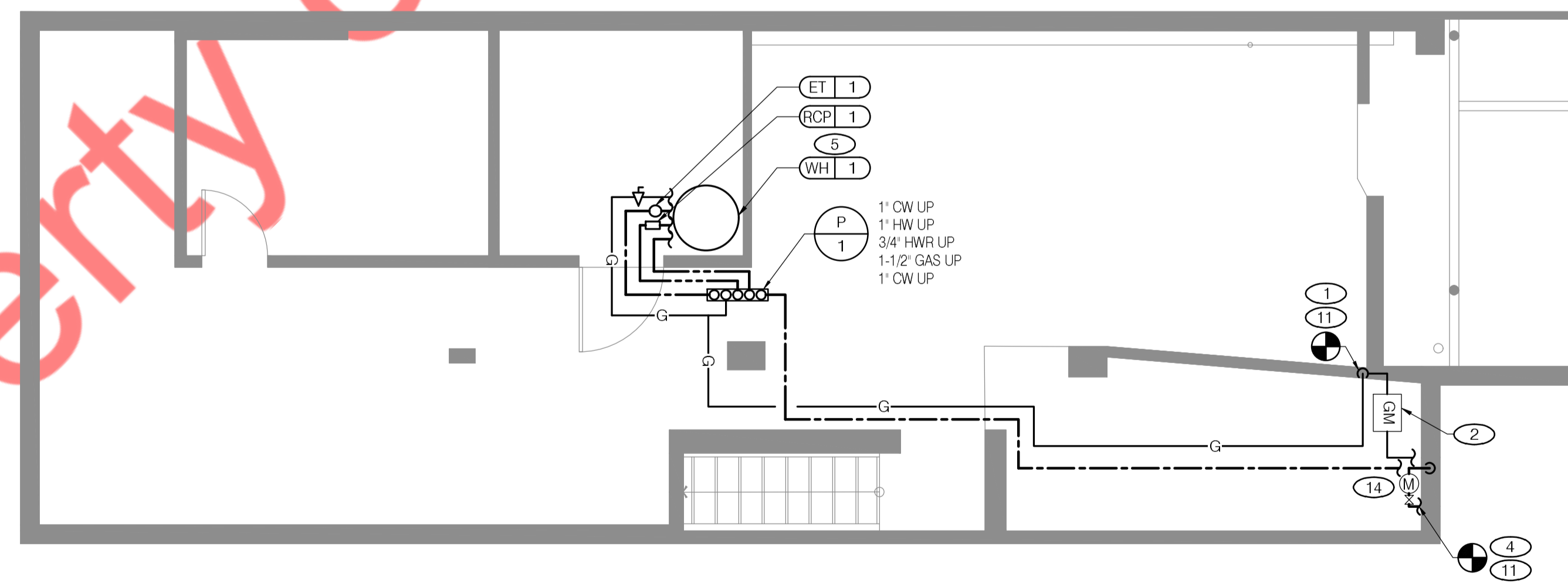
**PLUMBING WATER AND GAS PLANS NOTES**

**3**

**FIRST FLOOR PLUMBING WATER AND GAS PLAN 1/4"=1'-0"**

**1**

- 1 CONNECT 2" NEW GAS LINE TO EXISTING 2" NATURAL GAS SERVICE LINE. MINIMIZE THE AMOUNT OF 90° TURNS WHERE POSSIBLE. ALL EXPOSED NATURAL GAS PIPING SHALL HAVE A PRIMER COAT OF ZINC RICH GALVANIZING PAINT FOR CORROSION PROTECTION.
- 2 CONTRACTOR TO FIELD VERIFY THE LOCATION AND SIZE OF EXISTING 1000 CFH GAS METER, AND UPDATE THE SAME IF REQUIRED.
- 3 3/4" HOT AND COLD WATER DOWN IN WALL TO 3-COMPARTMENT SINK. INSTALL WATTS NO. 9N BACKFLOW PREVENTER FOR EACH WATER LINE CONNECTION TO FAUCET. INSTALL EXACTA SANITIZER DISPENSING SYSTEM PER DETAIL 9/P-501.00.
- 4 CONNECT NEW 1" COLD WATER LINE TO EXISTING WATER SERVICE LINE ABOVE CEILING. CONTRACTOR TO FIELD VERIFY EXACT LOCATION AND CONNECTION REQUIREMENTS.
- 5 3/4" HW & CW, 1" GAS DOWN TO GAS FIRED WATER HEATER. PIPE RELIEF TO EXISTING FLOOR DRAIN.
- 6 ROUTE HOT AND COLD WATER ABOVE CEILING, BELOW BUILDING INSULATION.
- 7 1" GAS DOWN TO FRYER.
- 8 1/2" GAS DOWN TO OVENS, SEE OVEN GAS PIPING DETAIL 3/P-501.00.
- 9 PLACE IN RECESSED W/D BOX. 1/2" COLD WATER LINE DOWN IN WALL AND VALVE AT 12" A.F.F. PROVIDE T&S "SAFE-T-LINK" CW-4B-60, 3/8", 5 FT. COILED STAINLESS STEEL BRAIDED HOSE WITH EXTRUDED COATING - T&S AW-5B-SS 3/8" STAINLESS STEEL QUICK DISCONNECT TO CONNECT TO HOT HOLD CABINET WATER CONNECTION PER MANUFACTURERS INSTRUCTIONS.
- 10 VENDOR INSTALLS EXACTA SYSTEM AT MOP SINK, PR DETAIL 2/P-501.00.
- 11 THE CONTRACTOR SHALL VERIFY ALL EXISTING CONDITIONS FOR ROUTING AND CONNECTION OF WATER AND GAS SERVICE.
- 12 1/2" TEMPERED WATER DOWN IN WALL TO HAND SINK WITH KNEE PEDAL CONTROL. REFER TO DETAIL 8/P-501.00.
- 13 TEMPERING MIXING VALVE ABOVE CEILING. REFER TO DETAIL 8/P-501.00.
- 14 CONTRACTOR TO FIELD VERIFY THE LOCATION AND SIZE OF EXISTING WATER METER AND CONTROL VALVE, AND UPDATE THE SAME IF REQUIRED.
- 15 PROVIDE THE NEW 1" WATTS MODEL 009M2QT RPZA. CONTRACTOR TO FIELD VERIFY THE REQUIREMENT, LOCATION AND SIZE OF RPZA, DRAIN OF

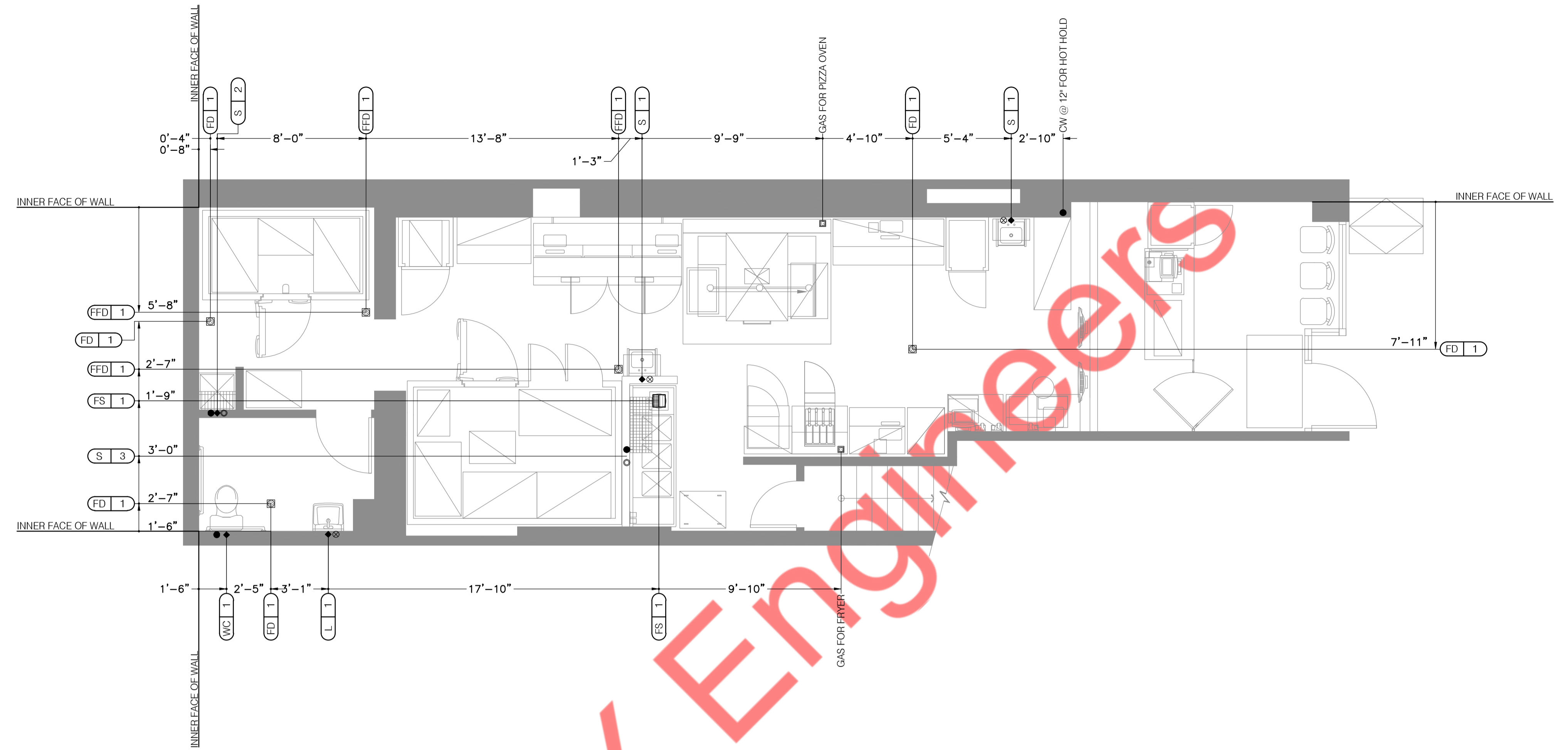


**KEY NOTES**

**4**

**CELLAR FLOOR PLUMBING WATER AND GAS PLAN 1/4"=1'-0"**

**2**



**PLUMBING ROUGH-IN PLAN** 1/4"=1'-0" **1**

EQUIP #	EQUIPMENT ITEM	TYPE	ELEVATION	REMARKS
FS 1	FLOOR SINK		--	
FD 1	FLOOR DRAIN		--	
FFD 1	HUB DRAIN		--	
WC 1	WATER CLOSET	CW	+29' A.F.F.	BOTH HANDICAP AND REGULAR
L 1	LAVATORY	TW	+20' A.F.F.	--
L 1	LAVATORY WASTE LINE	W	+16-1/2' A.F.F.	--
S 1	HAND SINK	TW	+18' A.F.F.	RIM OF LAV @ +2-8' A.F.F.
S 2	MOP SINK	W		
S 2	MOP SINK FAUCET	CW/HW	+36' A.F.F.	--
S 3	3-COMPARTMENT SINK	W	+19' A.F.F.	--
S 3	3-COMPARTMENT SINK FAUCET	CW/HW	+38' A.F.F.	--

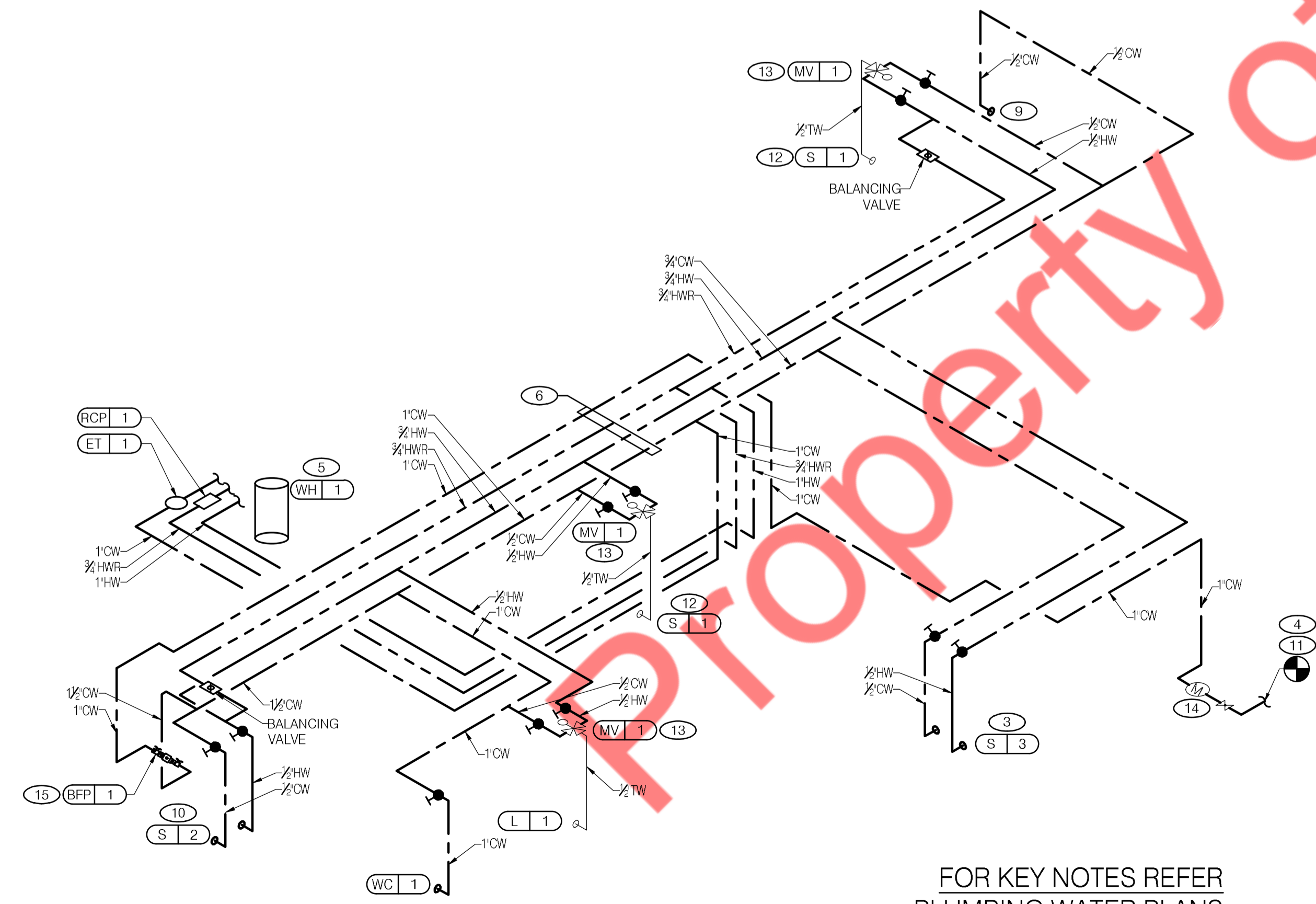
**PLUMBING ROUGH-IN SCHEDULE** **4**

- HOT WATER
- COLD WATER
- ⊗ TEMPERED WATER
- GAS
- ▣ FLOOR DRAIN
- ▤ FLOOR SINK
- ▥ HUB DRAIN
- ◆ WASTE OUTLET

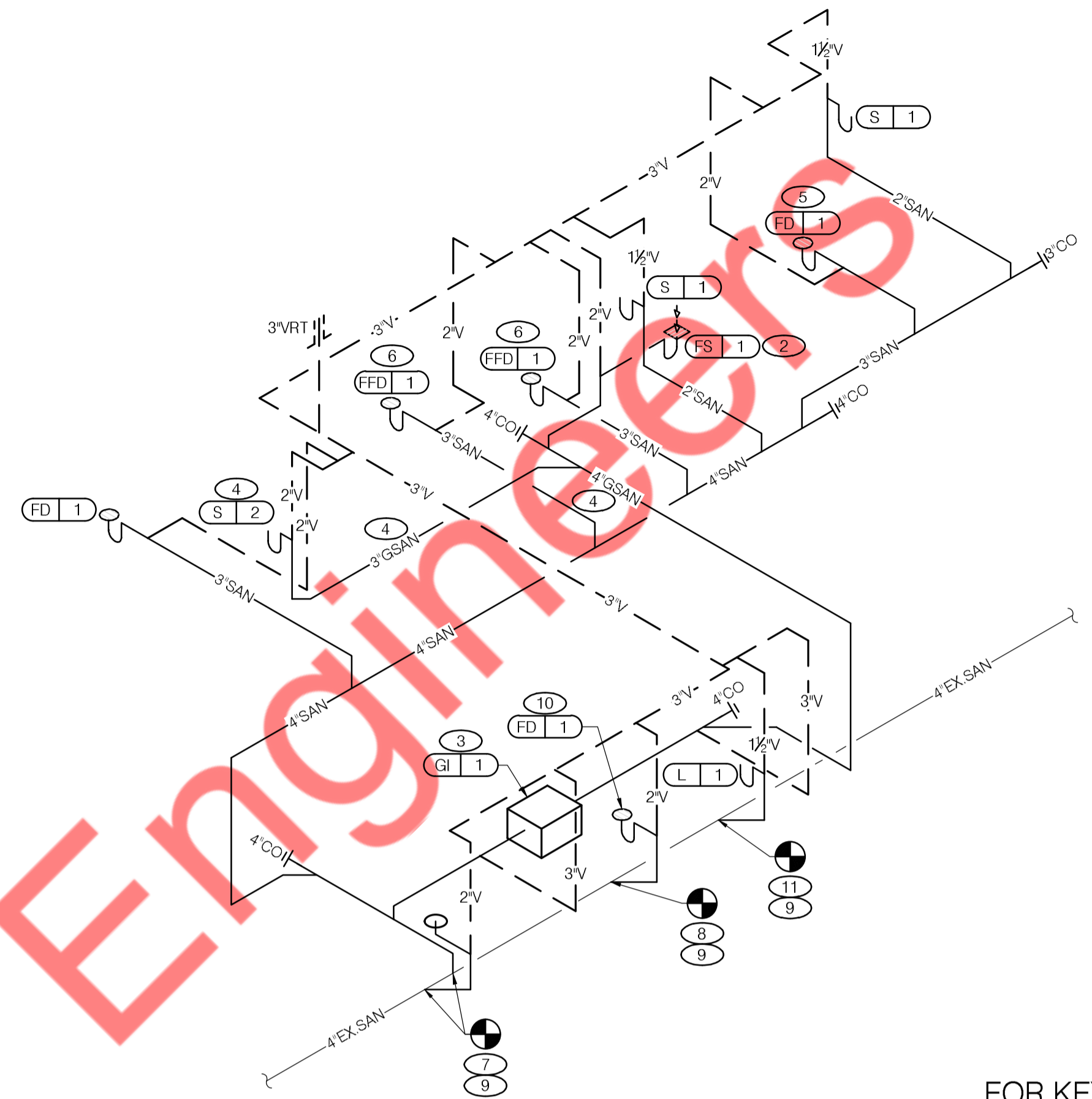
**SYMBOL LEGEND** **3**

1. ALL DIMENSIONS TO FLOOR SINKS, FLOOR DRAINS AND HUB DRAINS ARE TO CENTER OF FIXTURE.
2. IT IS THE RESPONSIBILITY OF THE CONTRACTOR TO COORDINATE THIS DATA ON THE LOCATION OF ALL PLUMBING ROUGH-INS WITH INFORMATION PROVIDED ON THE ARCH AND STRUCTURAL DRAWINGS AND THE EQUIPMENTS ACTUALLY SUPPLIED AND TO CONFIRM THE CORRECTNESS OF ANY DIMENSIONS INDICATED HEREIN.
3. PLUMBER TO COORDINATE ROUGH IN OF MOP SINK WITH G.C. TO ALLOW FOR WASTE INTERFERENCE WITH GRADE BEAM. SLEEVE THROUGH GRADE BEAM AS REQUIRED.

**PLUMBING ROUGH-IN NOTES** **2**



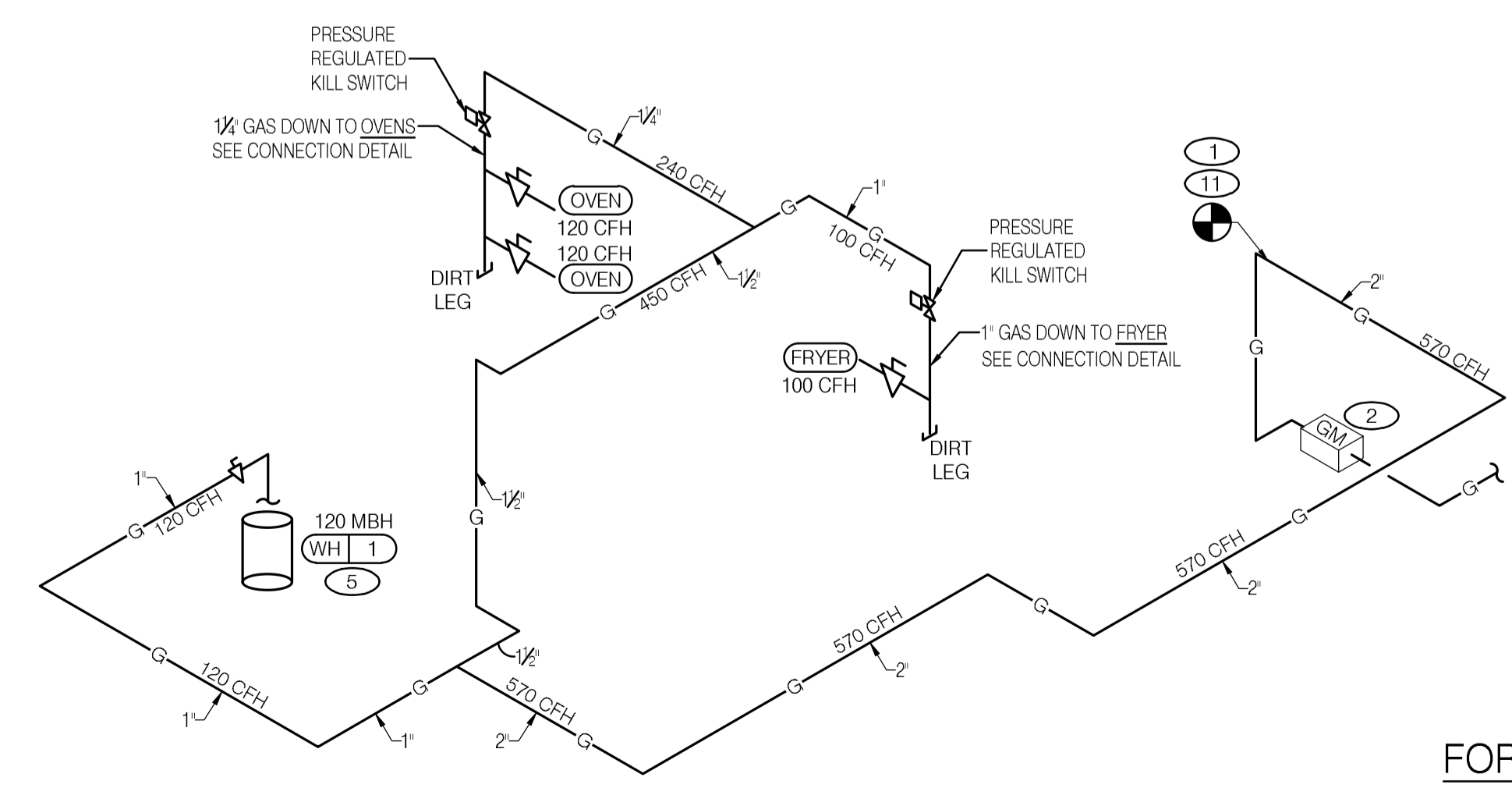
FOR KEY NOTES REFER  
PLUMBING WATER PLANS



FOR KEY NOTES REFER PLUMBING  
WASTE AND VENT PLANS

GAS DEMAND SCHEDULE		
(C338)	OVENS (2 @ 120 MBH)	240 CFH
(C365)	FRYER (1 @ 100 MBH)	100 CFH
(WH 1)	WATER HEATERS (1 @ 120 MBH)	120 CFH
	FUTURE OVENS (1 @ 110 MBH)	110 CFH
TOTAL DEMAND		570 CFH = 570,000 BTUH

NOTE:  
SIZING BASED ON 2014 NYC FUEL GAS CODE, TABLE 402.4(2) - SCHEDULE 40 METALLIC PIPE, INLET PRESSURE LESS THAN 2 PSI, PRESSURE DROP OF 0.5" W.C., 0.60 SPECIFIC GRAVITY, 125' TOTAL DEVELOPED LENGTH.



FOR KEY NOTES REFER  
PLUMBING GAS PLANS