

1ST FLOOR ELECTRICAL POWER PLAN(TENANT#1)
SCALE: 3/16" = 1'-0"

ELECTRICAL POWER PLAN KEYED WORK NOTES:

- 1 PROVIDE RECESSED RECEPTACLE FOR CONNECTION TO VENDING MACHINE.
- 2 PROVIDE DEDICATED DUPLEX RECEPTACLE FOR NERVE CENTER. SEE DETAIL 5/LOW2 FOR MORE
- 3 EMERGENCY PHONE LOCATION - 48" MAXIMUM TO OPERABLE PARTS.
- 4 PROVIDE RECEPTACLE FOR SHOW WINDOW PER NEC 210.62.
- 5 PROVIDE POWER AND DATA OUTLETS IN WALL MOUNTED AT 9'-6" AFF FOR TELEVISIONS, WHERE LOCATED AT WINDOWS MOUNT DEVICES ABOVE THE WINDOW. EACH TV WILL REQUIRE 2 OUTLETS, ONE FOR THE TV AND ONE FOR THE FM TRANSCIVER. OUTLET LOCATIONS ARE TO BE DETERMINED BASED ON THE FINAL CARDIO EQUIPMENT LAYOUT, COORDINATE DATA REQUIREMENTS.
- 6 PROVIDE (1) 4" SQUARE JUNCTION BOX WITH DUPLEX RECEPTACLE AND (1) 4" SQUARE JUNCTION BOX WITH 3/4" CONDUIT AND COAX CABLE (SEE LOW1) MOUNTED AT 84" A.F.F. TO TOP OF JUNCTION BOX FOR AF TRAINING TV'S. COORDINATE EXACT LOCATION WITH ARCHITECT AND CONSTRUCTION MANAGER PRIOR TO ROUGH-IN.
- 7 PROVIDE FIRE RATED TELEPHONE BOARD WITH DEDICATED QUAD RECEPTACLE. VERIFY SYSTEM GROUNDING AND ALL OTHER REQUIREMENTS WITH LOCAL TELEPHONE COMPANY. EXTEND 1" TELEPHONE CONDUIT WITH PULLWIRE FROM SERVICE ENTRANCE AT DEMISING WALL TO TELECOMMUNICATION BOARD. VERIFY EXACT LOCATION IN FIELD.
- 8 PROVIDE 208 VOLTS, 3-PHASE DISCONNECT & SWITCH FOR TANNING BED. COORDINATE EXACT POWER REQUIREMENTS WITH MANUFACTURER PRIOR TO ROUGH-IN. WIRING SHALL BE 3#8, 1#10G, 3/4" C
- 9 EXHAUST FAN. CONTROL VIA LIGHT SWITCH IN RESTROOM. COORDINATE WITH MECHANICAL.
- 10 LOCATE RESTROOM RECEPTACLE SO TOP OF DEVICE IS LOCATED IN FIRST FULL TILE FROM THE TOP. THE TILE STOPS AT 48" A.F.F.
- 11 PROVIDE CONNECTION FOR OWNER PROVIDED HAND DRYER: 120V/1PH, 1500 WATTS. PROVIDE LOCK-OFF DEVICE. COORDINATE LOCATION PRIOR TO ROUGH-IN.
- 12 RECESSED CLOCK OUTLET AT 9'-0" A.
- 13 RECEPTACLE FOR HYDRO-MASSAGE BED: 30A, 250V NEMA L6-30R LOCKING RECEPTACLE. VERIFY LOCATION. DISCONNECT TANNING BED AND PROVIDE NEW 30A BREAKER IN PANEL. PROVIDE NEW WIRES AS SHOWN. COORDINATE ALL REQUIREMENTS PRIOR TO ROUGH IN.
- 14 LOCATE RECEPTACLE WITHIN 5' OF CENTER OF HYDRO MASSAGE BED. VERIFY LOCATION
- 15 PROVIDE (CAT5E) NETWORK DROP AT LEAST 15' FROM HYDRO-MASSAGE BED. SEE INSTALLATION GUIDE FOR MORE INFORMATION.
- 16 PROVIDE CONNECTION TO FITNESS ON REQUEST SYSTEM. SEE DETAIL ON SHEET LOW2 FOR ADDITIONAL INFORMATION.
- 17 PROVIDE RECEPTACLE MOUNTED AT 12" A.F.F. FOR WALL MOUNTED FAN. COORDINATE EXACT LOCATION WITH OWNER PRIOR TO ROUGH-IN.
- 18 NO TIME CLOCK REQUIRED. STORE OPEN 24 HOURS 365 DAYS A YEAR. SIGN VENDOR IS PROVIDING A PHOTOSENSOR FOR ON/OFF CONTROL OF SIGN.
- 19 PROVIDE WIREMOLD ALS200 WITH SEPARATION FOR POWER AND DATA WITH LENGTHS AND DEVICES AS SHOWN. INSTALLATION WILL ALSO REQUIRE PART#ALS246-DD FOR EACH RECEPTACLE AND DATA LOCATION. PROVIDE KEYSTONE 106 FRAME KSDP106-W OR EQUIVALENT WITH CATS KEYSTONE JACK AND COAXIAL F-CONNECTOR FOR EACH DATA AND COAXIAL LOCATION.
- 20 PROVIDE CHASE WITH SEPARATION FOR POWER AND COAXIAL CABLE FROM WIREMOLD TO ACCESSIBLE CEILING SPACE.
- 21 CARDIO EQUIPMENT OUTLETS LOCATED AT 12' FROM STOREFRONT. COORDINATE EXACT LOCATION OF THESE OUTLETS WITH THE OWNER PRIOR TO ROUGH-IN. OUTLETS SHALL BE INSTALLED INTO THE CONCRETE TO AVOID TRIPPING HAZARD.
- 22 PROVIDE HOMERUNS FOR COAXIAL CABLE (RG6) FOR EXERCISE EQUIPMENT. (1) 1-1/4" CONDUIT FROM WIREMOLD UP TO ACCESSIBLE CEILING SPACE AND TO TELEPHONE BOARD.
- 23 120 VOLTS OUTLET INSTALLED ON WALL ABOVE SOFFIT.
- 24 PROVIDE CONNECTIONS TO NEW GAS WATER HEATER AND RECIRCULATION PUMP. COORDINATE WITH PLUMBING CONTRACTOR PRIOR TO ROUGH-IN. PROVIDE A RECEPTACLE WITH CORD AN PLUG FOR RECIRCULATION PUMP AS REQUIRED.
- 25 120 VOLTS CEILING OUTLET FOR WIRELESS SPEAKER. VERIFY EXACT LOCATION WITH THE ARCHITECT/OWNER.
- 26 120 VOLTS OUTLET AT EACH SIDE OF RETAIL WALL.

ELECTRICAL LEGENDS:

- A 800A,120/208V, 3-PHASE, 4-WIRE MAIN LUGS TERMINAL BOX WITH NEMA 3R ENCLOSURE.(MODEL : EZM3800TB BY SQUARE D)
- B NEW 600A, 208/120V, 3 PHASE, CT CABINET & METER FOR TENANT #1.
- C NEW 600A, 208/120V, 3 PHASE, ELECTRICAL DISCONNECT SWITCH FOR TENANT #1.
- D NEW 200A METER AND DISCONNECT SWITCH STACKED FOR THE TENANT #2
- E NEW PANEL "A". 120/208V, 1-PH, 3-WIRE 600 AMPS HAVING FEED THRU LUGS.
- F NEW PANEL "A (SEC-1)". 120/208V, 1-PH, 3-WIRE 600 AMPS.

FIRE ALARM DEFERAL NOTES:

DUNHAM ASSOCIATES IS NOT THE ENGINEER OF RECORD FOR FIRE ALARM. THE ELECTRICAL CONTRACTOR SHALL INCLUDE A PRICE IN THE ELECTRICAL BID FOR A LANDLORD APPROVED FIRE ALARM STSIEM, INCLUDING PLANS AND ALL ASSOCIATED DOCUMENTS AS REQUIRED BY LOCAL CODES. THESE PLANS SHALL BE SUBMITTED TO THE LOCAL AUTHORITIES BY A QUALIFIED AND LICENSED DESIGN BUILD FIRE ALARM CONTRACTOR FOR A COMPLETE AND APPROVED FIRE ALARM SYSTEM. THE PLANS SHALL BE SIGNED AND SEALED BY THE ENGINEER OF RECORD AND SUBMITTED FOR PLAN REVIEW PRIOR TO RECEIVING SPECIFIC PERMITS FOR THIS WORK. THE FIRE ALARM CONTRACTOR SHALL ALSO SUBMIT ALL SHOP DRAWINGS, BATTERY CALCULATIONS, SPECIFICATION SHEETS, ETC. AS REQUIRED BY THE AUTHORITY HAVING JURISDICTION TO THEIR LOCAL DESIGN ENGINEER FOR REVIEW AND APPROVAL. LOCATIONS AND NUMBER OF DEVICES ARE SUGGESTED ONLY.

POWER GENERAL NOTES:

- A. THE CONTRACTOR FOR THIS WORK IS REQUIRED TO READ THE SPECIFICATIONS REVIEW DRAWINGS OF ALL DIVISIONS OF WORK AND IS RESPONSIBLE FOR THE COORDINATION OF THIS WORK AND THE WORK OF ALL SUBCONTRACTORS WITH ALL DIVISIONS OF WORK. IT IS THIS CONTRACTOR'S RESPONSIBILITY TO PROVIDE ALL SUBCONTRACTORS WITH A COMPLETE SET OF BID DOCUMENTS.
- B. CIRCUITING INDICATED ON PLAN IS PARTIALLY DIAGRAMMATIC FOR CLARITY. CIRCUITING SHALL BE "THRU--WIRING" WHERE AND WHENEVER POSSIBLE.
- C. FIELD VERIFY EXACT LOCATION AND ELECTRICAL REQUIREMENTS OF ALL HVAC EQUIPMENT WITH MECHANICAL CONTRACTOR PRIOR TO ORDERING RELATED ELECTRICAL EQUIPMENT.
- D. ALL RECEPTACLE CIRCUITS UP TO 100--0" SHALL UTILIZE #12 CONDUCTORS MINIMUM ALL RECEPTACLE CIRCUITS FROM 101'-0" TO 150'-0" IN LENGTH SHALL UTILIZE #10 CONDUCTORS MINIMUM. ALL RECEPTACLE CIRCUITS 151'-0" UP TO 250'-0" IN LENGTH SHALL UTILIZE #8 CONDUCTORS MINIMUM.
- E. ELECTRICAL CONTRACTOR SHALL MAKE ALL FINAL CONNECTIONS AS REQUIRED FOR A FULLY COMPLETE AND OPERABLE SYSTEM.
- F. WHERE DRYWALL CEILINGS ARE USED, THE ELECTRICAL CONTRACTOR SHALL ARRANGE CIRCUITS TO AVOID THE USE OF JUNCTION BOXES IN UNACCESSIBLE LOCATIONS. THE USE OF JUNCTION BOXES ABOVE DRYWALL CEILINGS SHALL BE LIMITED TO LOCATIONS NEAR ACCESS FRAMES USED FOR DIFFUSERS AND RETURN AIR GRILLES OR ACCESS PANELS AS LOCATED ON PLANS. FIELD COORDINATE WITH TENANTS PROJECT MANAGER PRIOR TO ROUGH--IN TO AVOID ANY CONFLICTS. JUNCTION BOXES ABOVE LAY--IN CEILINGS ARE ACCEPTABLE.
- G. ELECTRICAL CONTRACTOR IS RESPONSIBLE TO INQUIRE WITH THE LANDLORD'S REPRESENTATIVE ON ANY FIRE ALARM SYSTEMS IN USE AT THE TIME OF THE BID. IF THE FIRE ALARM SYSTEM IS NOT ADEQUATELY DESCRIBED ON THE DRAWINGS, THE ELECTRICAL CONTRACTOR IS RESPONSIBLE TO INFORM THE GENERAL CONTRACTOR AND INCLUDE THE COST AS A SEPARATE LINE ITEM IN THE BID. NO ADDITIONAL MONIES SHALL BE AWARDED FOR 11E--IN REQUIREMENTS TO A LANDLORD'S FIRE ALARM SYSTEM THAT IS IN EXISTENCE AT THE TIME OF THE BID, WITHOUT A SEPARATE LINE ITEM FOR THE FIRE ALARM SYSTEM AT THE TIME OF THE BID.
- H. INSTALL ENGRAVED BAKELITE NAMEPLATE ON SERVICE DISCONNECT SWITCH IN LANDLORD'S SWITCHGEAR WITH DEMISED PREMISES' SPACE NUMBER.
- I. NO HANGERS, SUPPORTS, JUNCTION BOXES, ETC. SHALL BE ATTACHED TO ROOF DECK.
- J. COORDINATE ALL ROOF PENETRATIONS WITH THE LANDLORD. WRITTEN PERMISSION FROM THE LANDLORD SHALL BE RECEIVED PRIOR TO ANY WORK BEING PERFORMED. ALL ROOF PENETRATIONS TO BE BY LANDLORD'S CONTRACTOR AT TENANT'S ELECTRICAL CONTRACTOR'S EXPENSE.
- K. ELECTRICAL CONTRACTOR IS TO FURNISH AND INSTALL TYPEWRITTEN PANEL DIRECTORIES ALL PANELBOARDS.
- L. ALL RECEPTABLES TO BE MOUNTED VERTICALLY, NOT HORIZONTALLY.
- M. GC IS TO REVIEW STRUCTURE BELOW OUR SPACE PRIOR TO CONSTRUCTION FOR CONDITIONS PREVENTING FLOOR PENETRATIONS AS SHOWN. OBSTRUCTIONS THAT PREVENT LAYOUT AS SHOWN SHALL BE BROUGHT TO THE ATTENTION OF THE ARCHITECT IMMEDIATELY AND PRIOR TO FRAMING.
- N. CONTRACTOR TO INSTALL OWNER SUPPLIED EMERGENCY 911 TELEPHONE, INCLUDING CONNECTION TO LV/TELECOMMUNICATIONS SYSTEM AND/OR DEMARCATION POINT. VERIFY LOCATION WITH OWNER.
- O. CONTRACTOR TO PROVIDE WIRING/CONNECTION FOR, CABLE TELEVISION, TELEPHONE, AND DATA FROM THE DEMARCATION POINTS/POINTS OF ORIGINATIONS TO THE POINTS OF USE/TERMINATIONS. THIS INCLUDES BUT IS NOT LIMITED TO THE TELEVISIONS, EXERCISE EQUIPMENT WITH BUILT--IN TELEVISIONS, 911--EMERGENCY CALL PHONE, TELEPHONES AND COMPUTERS IN OFFICES AND, IF APPLICABLE THE "FITNESS ON REQUEST" SYSTEM.
- P. COORDINATE COLOR OF RECEPTABLES WITH OWNER ALL COVER PLATES SHALL BE STAINLESS STEEL. THIS INCLUDES COVERS FOR RECEPTABLES, SWITCHES, AND LOW VOLTAGE DEVICES.

ELECTRICAL POWER PLAN KEYED WORK NOTES:

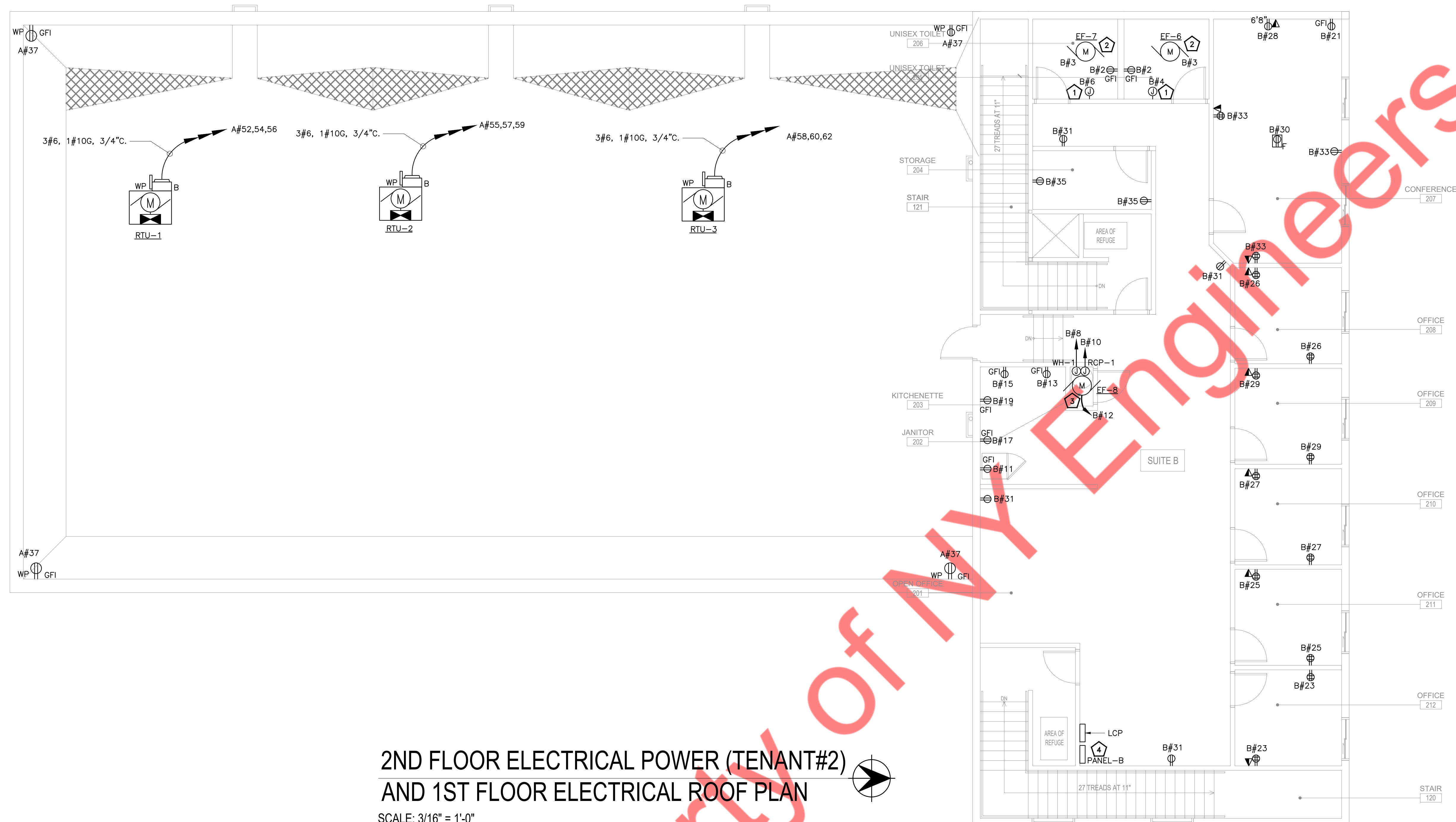
- 1 PROVIDE CONNECTION FOR HAND DRYER: 120V/1PH, 1500 WATTS. PROVIDE LOCK-OFF DEVICE. COORDINATE LOCATION PRIOR TO ROUGH-IN.
- 2 EXHAUST FAN. CONTROL VIA LIGHT SWITCH IN RESTROOM. COORDINATE WITH MECHANICAL.
- 3 PROVIDE CONNECTIONS TO NEW GAS WATER HEATER AND RECIRCULATION PUMP. COORDINATE WITH PLUMBING CONTRACTOR PRIOR TO ROUGH-IN. PROVIDE A RECEPTACLE WITH CORD AN PLUG FOR RECIRCULATION PUMP AS REQUIRED.
- 4 200A, 208/120V, 3 PHASE, PANEL "B" COORDINATE EXACT LOCATION WITH OWNER/ARCHITECT FOR TENANT #2.

POWER GENERAL NOTES:

- A. THE CONTRACTOR FOR THIS WORK IS REQUIRED TO READ THE SPECIFICATIONS REVIEW DRAWINGS OF ALL DIVISIONS OF WORK AND IS RESPONSIBLE FOR THE COORDINATION OF THIS WORK AND THE WORK OF ALL SUBCONTRACTORS WITH ALL DIVISIONS OF WORK. IT IS THIS CONTRACTOR'S RESPONSIBILITY TO PROVIDE ALL SUBCONTRACTORS WITH A COMPLETE SET OF BID DOCUMENTS.
- B. CIRCUITING INDICATED ON PLAN IS PARTIALLY DIAGRAMMATIC FOR CLARITY. CIRCUITING SHALL BE "THRU--WIRING" WHERE AND WHENEVER POSSIBLE.
- C. FIELD VERIFY EXACT LOCATION AND ELECTRICAL REQUIREMENTS OF ALL HVAC EQUIPMENT WITH MECHANICAL CONTRACTOR PRIOR TO ORDERING RELATED ELECTRICAL EQUIPMENT.
- D. ALL RECEPTACLE CIRCUITS UP TO 100'-0" SHALL UTILIZE #12 CONDUCTORS MINIMUM. ALL RECEPTACLE CIRCUITS FROM 101'-0" TO 150'-0" IN LENGTH SHALL UTILIZE #10 CONDUCTORS MINIMUM. ALL RECEPTACLE CIRCUITS 151'-0" UP TO 250'-0" IN LENGTH SHALL UTILIZE #8 CONDUCTORS MINIMUM. CIRCUITS ABOVE 251'-0" SHALL UTILIZE #6 CONDUCTORS MINIMUM.
- E. ELECTRICAL CONTRACTOR SHALL MAKE ALL FINAL CONNECTIONS AS REQUIRED FOR A FULLY COMPLETE AND OPERABLE SYSTEM.
- F. WHERE DRYWALL CEILINGS ARE USED, THE ELECTRICAL CONTRACTOR SHALL ARRANGE CIRCUITS TO AVOID THE USE OF JUNCTION BOXES IN INACCESSIBLE LOCATIONS. THE USE OF JUNCTION BOXES ABOVE DRYWALL CEILINGS SHALL BE LIMITED TO LOCATIONS NEAR ACCESS FRAMES USED FOR DIFFUSERS AND RETURN AIR GRILLES OR ACCESS PANELS AS LOCATED ON PLANS. FIELD COORDINATE WITH TENANT'S PROJECT MANAGER PRIOR TO ROUGH--IN TO AVOID ANY CONFLICTS. JUNCTION BOXES ABOVE LAY--IN CEILINGS ARE ACCEPTABLE.
- G. ELECTRICAL CONTRACTOR IS RESPONSIBLE TO INQUIRE WITH THE LANDLORD'S REPRESENTATIVE ON ANY FIRE ALARM SYSTEMS IN USE AT THE TIME OF THE BID. IF THE FIRE ALARM SYSTEM IS NOT ADEQUATELY DESCRIBED ON THE DRAWINGS, THE ELECTRICAL CONTRACTOR IS RESPONSIBLE TO INFORM THE GENERAL CONTRACTOR AND INCLUDE THE COST AS A SEPARATE LINE ITEM IN THE BID. NO ADDITIONAL MONIES SHALL BE AWARDED FOR 11E--IN REQUIREMENTS TO A LANDLORD'S FIRE ALARM SYSTEM THAT IS IN EXISTENCE AT THE TIME OF THE BID, WITHOUT A SEPARATE LINE ITEM FOR THE FIRE ALARM SYSTEM AT THE TIME OF THE BID.
- H. INSTALL ENGRAVED BAKELITE NAMEPLATE ON SERVICE DISCONNECT SWITCH IN LANDLORD'S SWITCHGEAR WITH DEMISED PREMISES' SPACE NUMBER.
- I. NO HANGERS, SUPPORTS, JUNCTION BOXES, ETC. SHALL BE ATTACHED TO ROOF DECK.
- J. COORDINATE ALL ROOF PENETRATIONS WITH THE LANDLORD. WRITTEN PERMISSION FROM THE LANDLORD SHALL BE RECEIVED PRIOR TO ANY WORK BEING PERFORMED. ALL ROOF PENETRATIONS TO BE BY LANDLORD'S CONTRACTOR AT TENANT'S ELECTRICAL CONTRACTOR'S EXPENSE.
- K. ELECTRICAL CONTRACTOR IS TO FURNISH AND INSTALL TYPEWRITTEN PANEL DIRECTORIES IN ALL PANELBOARDS.
- L. ALL RECEPTACLES TO BE MOUNTED VERTICALLY, NOT HORIZONTALLY.
- M. GC IS TO REVIEW STRUCTURE BELOW OUR SPACE PRIOR TO CONSTRUCTION FOR CONDITIONS PREVENTING FLOOR PENETRATIONS AS SHOWN. OBSTRUCTIONS THAT PREVENT LAYOUT AS SHOWN SHALL BE BROUGHT TO THE ATTENTION OF THE ARCHITECT IMMEDIATELY AND PRIOR TO FRAMING.
- N. CONTRACTOR TO INSTALL OWNER SUPPLIED EMERGENCY 911 TELEPHONE, INCLUDING CONNECTION TO LV/TELECOMMUNICATIONS SYSTEM AND/OR DEMARCATION POINT. VERIFY LOCATION WITH OWNER.
- O. CONTRACTOR TO PROVIDE WIRING/CONNECTION FOR, CABLE TELEVISION, TELEPHONE, AND DATA FROM THE DEMARCATION POINTS/POINTS OF ORIGINATIONS TO THE POINTS OF USE/TERMINATIONS. THIS INCLUDES BUT IS NOT LIMITED TO THE TELEVISIONS, EXERCISE EQUIPMENT WITH BUILT--IN TELEVISIONS, 911--EMERGENCY CALL PHONE, TELEPHONES AND COMPUTERS IN OFFICES AND, IF APPLICABLE THE "FITNESS ON REQUEST" SYSTEM.
- P. COORDINATE COLOR OF RECEPTACLES WITH OWNER ALL COVER PLATES SHALL BE STAINLESS STEEL. THIS INCLUDES COVERS FOR RECEPTACLES, SWITCHES, AND LOW VOLTAGE DEVICES.

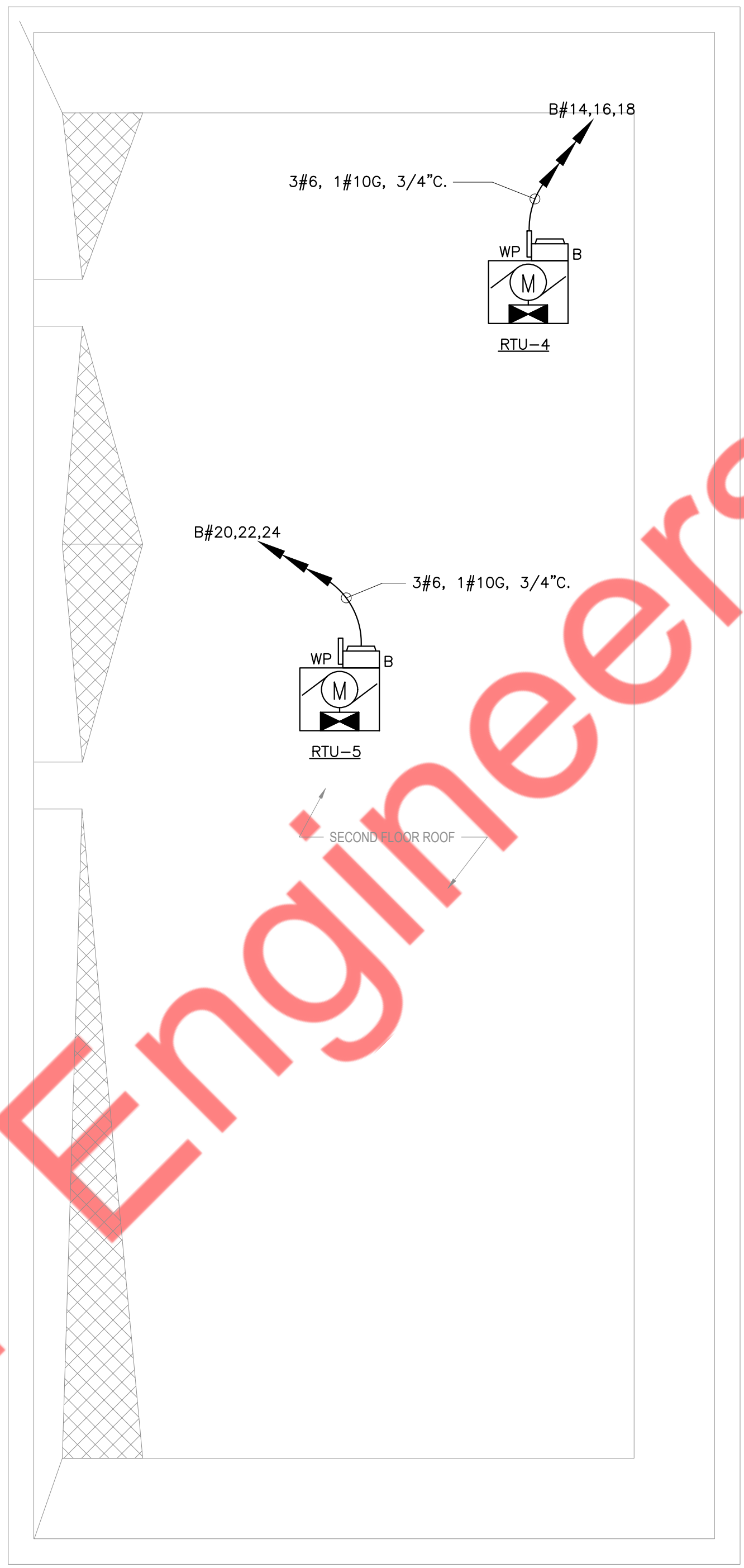
FIRE ALARM DEFERRAL NOTES:

DUNHAM ASSOCIATES IS NOT THE ENGINEER OF RECORD FOR FIRE ALARM. THE ELECTRICAL CONTRACTOR SHALL INCLUDE A PRICE IN THE ELECTRICAL BID FOR A LANDLORD APPROVED FIRE ALARM STSIEM, INCLUDING PLANS AND ALL ASSOCIATED DOCUMENTS AS REQUIRED BY LOCAL CODES. THESE PLANS SHALL BE SUBMITTED TO THE LOCAL AUTHORITIES BY A QUALIFIED AND LICENSED DESIGN BUILD FIRE ALARM CONTRACTOR FOR A COMPLETE AND APPROVED FIRE ALARM SYSTEM. THE PLANS SHALL BE SIGNED AND SEALED BY THE ENGINEER OF RECORD AND SUBMITTED FOR PLAN REVIEW PRIOR TO RECEIVING SPECIFIC PERMITS FOR THIS WORK. THE FIRE ALARM CONTRACTOR SHALL ALSO SUBMIT ALL SHOP DRAWINGS, BATTERY CALCULATIONS, SPECIFICATION SHEETS, ETC. AS REQUIRED BY THE AUTHORITY HAVING JURISDICTION TO THEIR LOCAL DESIGN ENGINEER FOR REVIEW AND APPROVAL. LOCATIONS AND NUMBER OF DEVICES ARE SUGGESTED ONLY.



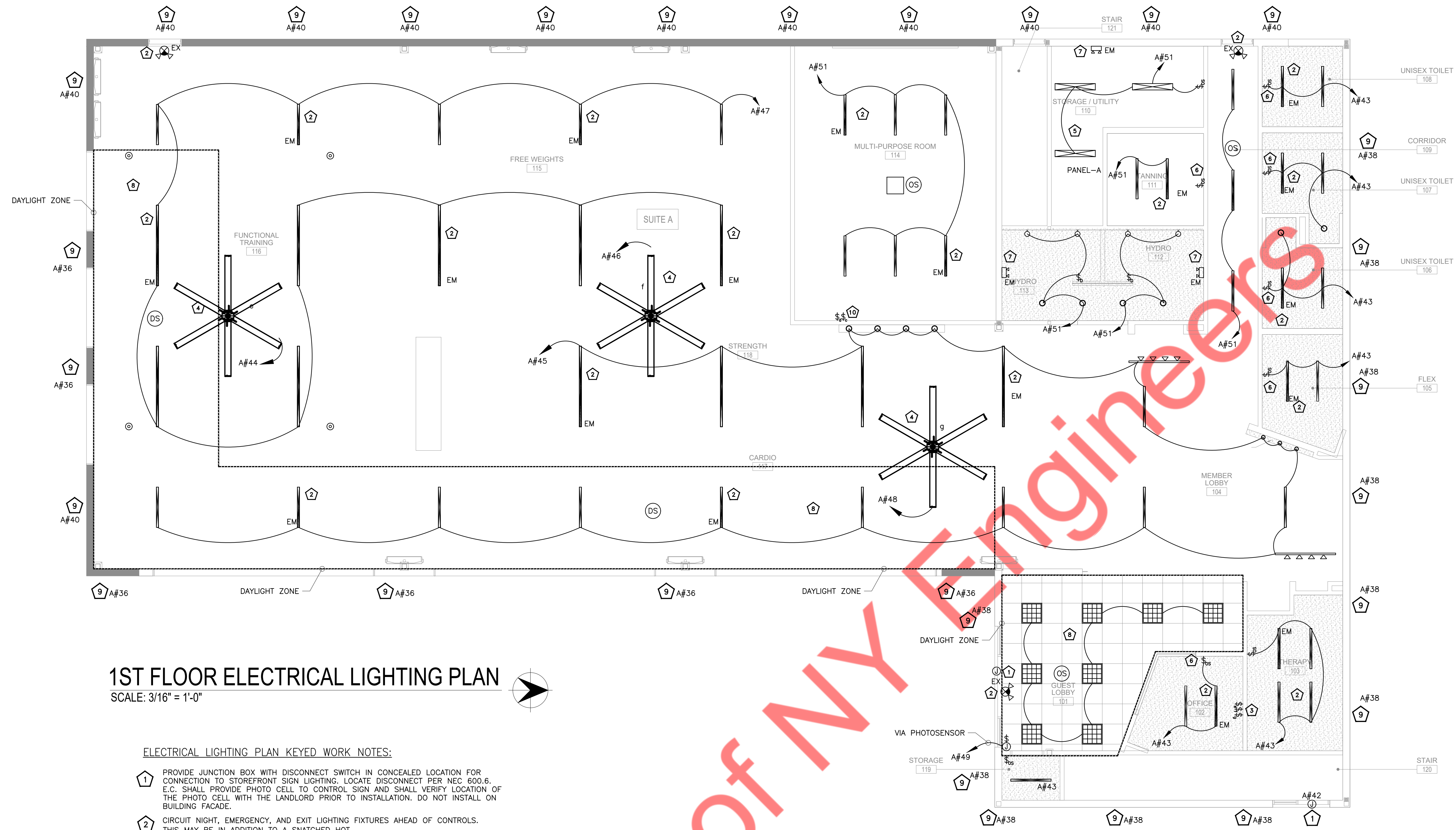
**2ND FLOOR ELECTRICAL POWER (TENANT#2)
AND 1ST FLOOR ELECTRICAL ROOF PLAN**
SCALE: 3/16" = 1'-0"

Property of **ANY Engineers**



Property of NY Engineers

2ND FLOOR ROOF ELECTRICAL POWER PLAN
 SCALE: 3/16" = 1'-0" 



1ST FLOOR ELECTRICAL LIGHTING PLAN

SCALE: 3/16" = 1'-0"

ELECTRICAL LIGHTING PLAN KEYED WORK NOTES:

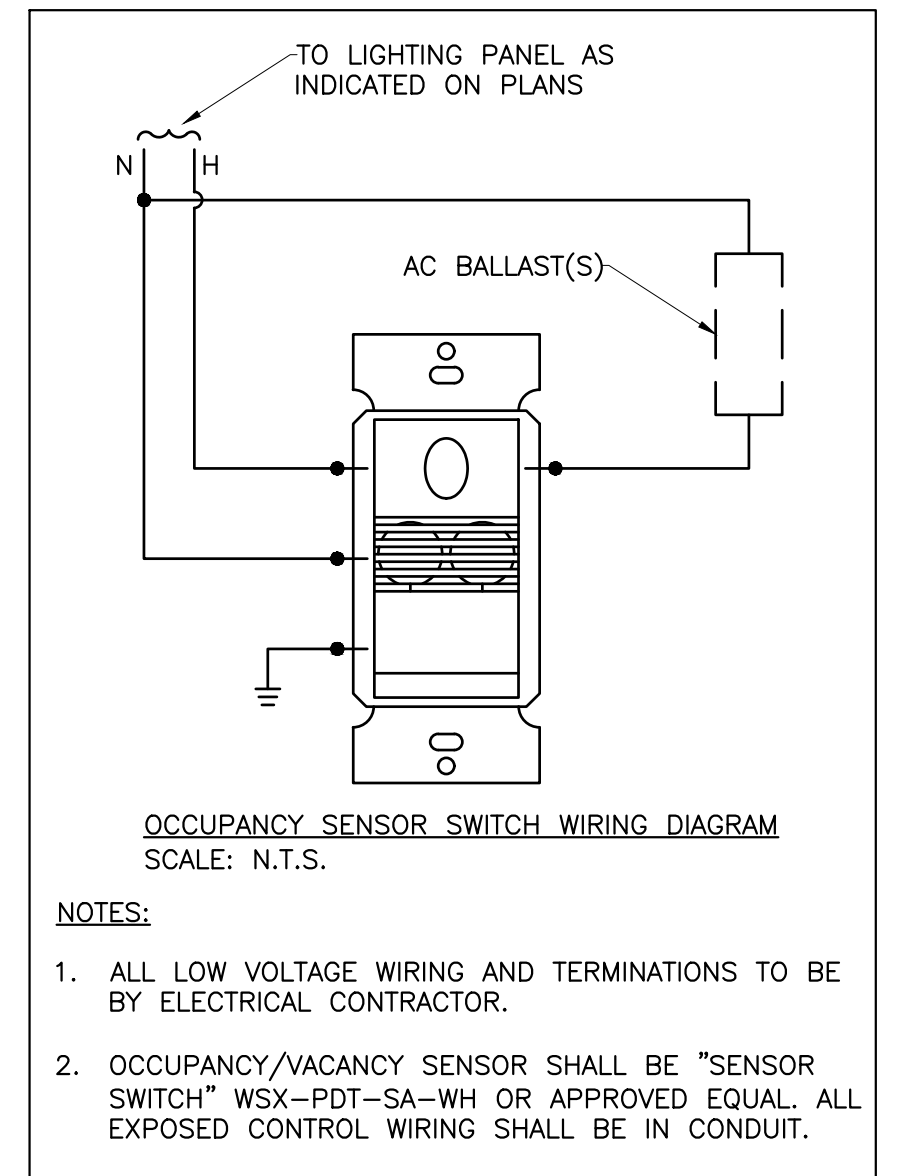
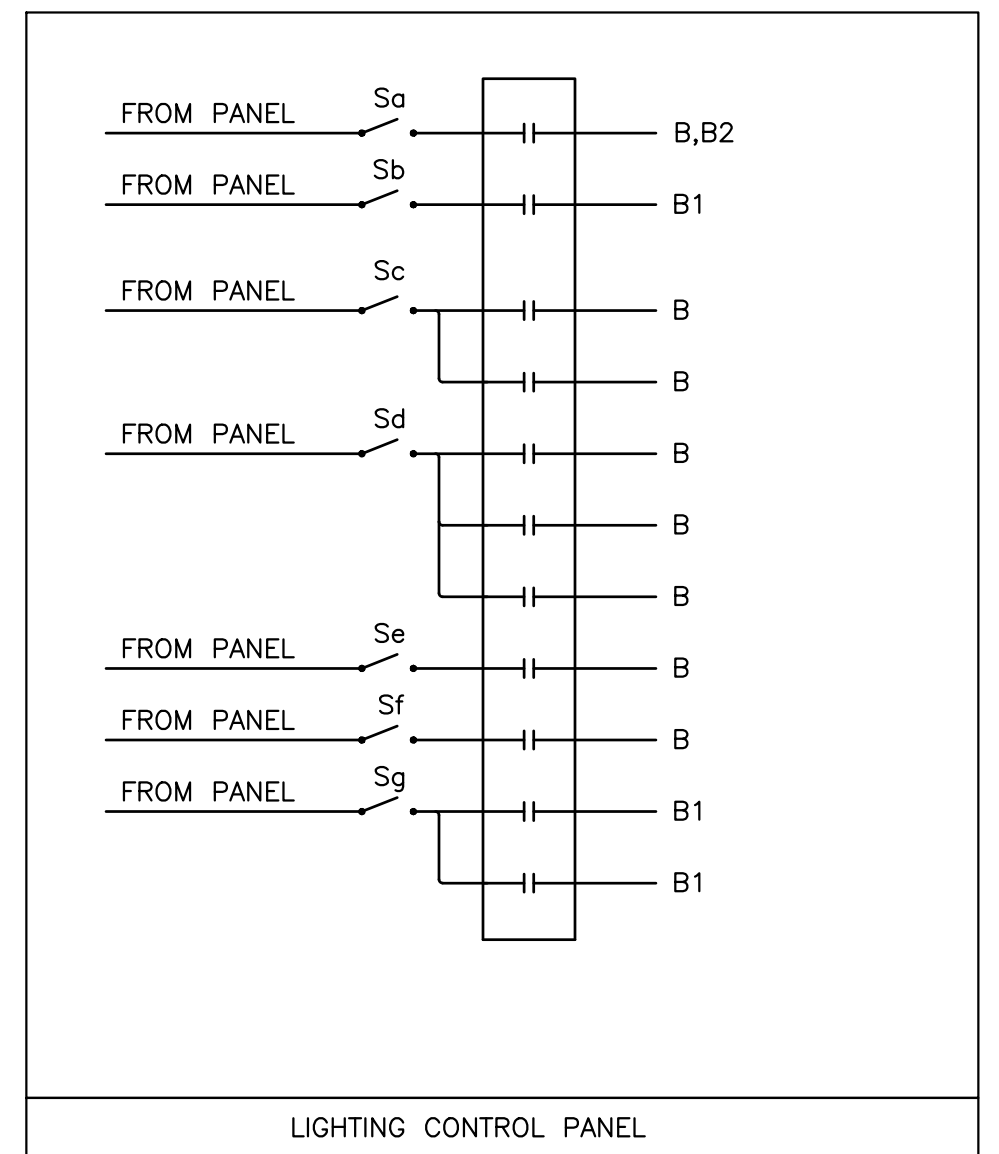
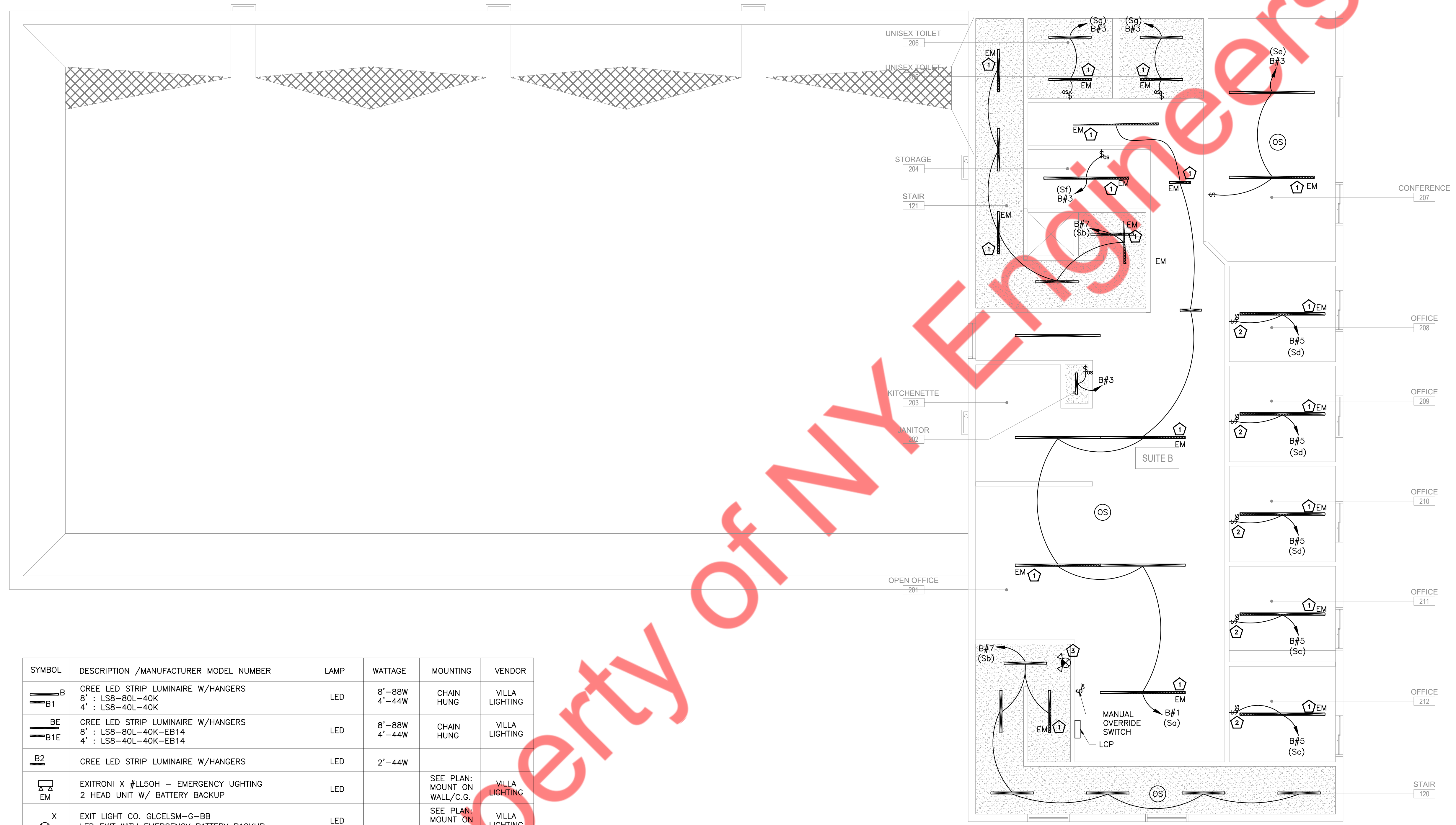
- 1) PROVIDE JUNCTION BOX WITH DISCONNECT SWITCH IN CONCEALED LOCATION FOR CONNECTION TO STOREFRONT SIGN LIGHTING. LOCATE DISCONNECT PER NEC 600.6. E.C. SHALL PROVIDE PHOTO CELL TO CONTROL SIGN AND SHALL VERIFY LOCATION OF THE PHOTO CELL WITH THE LANDLORD PRIOR TO INSTALLATION. DO NOT INSTALL ON BUILDING FACADE.
- 2) CIRCUIT NIGHT, EMERGENCY, AND EXIT LIGHTING FIXTURES AHEAD OF CONTROLS. THIS MAY BE IN ADDITION TO A SNATCHED HOT.
- 3) PROVIDE APPROPRIATE VARIABLE SPEED SWITCH 'w', 't' & 'g' IN MANAGER'S OFFICE FOR CONTROL OF CEILING FANS AS SHOWN. VERIFY WITH CEILING FAN MANUFACTURER TYPE OF VARIABLE SPEED SWITCH AND QUANTITY NEEDED.
- 4) BOTTOM OF CEILING FANS TO BE MOUNTED AT A UNIFORM HEIGHT TO AVOID ANY LIGHTS AND OBSTRUCTIONS. VERIFY ALL MOUNTING REQUIREMENTS WITH MANUFACTURERS INSTALLATION INSTRUCTIONS.
- 5) NO TIME CLOCK REQUIRED. STORE OPEN 24 HOURS 365 DAYS A YEAR. SIGN VENDOR IS PROVIDING A PHOTOSENSOR FOR ON/OFF CONTROL OF SIGN.
- 6) PROVIDE LUTRON MAESTRO WALL MOUNTED OCCUPANCY SENSOR MS-A102-0. INSTALL PER MANUFACTURER'S INSTALLATION GUIDE. WHERE LOCATED IN RESTROOM LOCATE IN FIRST FULL TILE FROM THE TOP. TILE STOPS AT 48" A.F.F. SET 11MEOUT TO MAX SETTING IN RESTROOMS.
- 7) MOUNT EMERGENCY LIGHTS AT 7'-6" A.F.F. UNLESS ON THE SAME WALL AS MIRRORS. VERIFY FINAL PLACEMENT OF MIRRORS PRIOR TO ROUGH-IN AND PLACE EMERGENCY LIGHT ABOVE MIRRORS TO AVOID ALL CONFLICTS.
- 8) LIGHT FIXTURES IN THIS AREA SHALL BE CONTROLLED BY DAYLIGHT SENSOR.
- 9) ELECTRICAL CONTRACTOR SHALL COORDINATE WITH OWNER/ARCHITECT FOR EXACT FIXTURE WATTAGE AND TYPE.
- 10) PROVIDE CONTROLLER(S) FOR WALL MOUNTED FANS ADJACENT TO DIMMER SWITCH. COORDINATE COMPATIBILITY OF CONTROLLER WITH WALL MOUNTED FAN SPECIFICATION PRIOR TO ORDERING.

GENERAL NOTES:

1. ALL BRANCH CIRCUITS UP TO 100' SHALL UTILIZE #12 CONDUCTORS MINIMUM. ALL BRANCH CIRCUITS FROM 101'-0" TO 150'-0" IN LENGTH SHALL UTILIZE #10 CONDUCTORS MINIMUM. ALL BRANCH CIRCUITS 151'-0" UP TO 250'-0" IN LENGTH SHALL UTILIZE #8 CONDUCTORS MINIMUM. CIRCUITS ABOVE 251'-0" SHALL UTILIZE #6 CONDUCTORS MINIMUM.
2. COORDINATE COLOR OF RECEPTACLES WITH OWNER ALL COVER PLATES SHALL BE STAINLESS STEEL. THIS INCLUDES COVERS FOR RECEPTACLES, SWITCHES, AND LOW VOLTAGE DEVICES.

SYMBOL	DESCRIPTION /MANUFACTURER MODEL NUMBER	LAMP	WATTAGE	MOUNTING	VENDOR
A1	GE 2X2 RECESSED BT-22-0-A2-A-V-WH TE	LED	34W	RECESSED	VILLA LIGHTING
B	CREE LED STRIP LUMINAIRE W/HANGERS 8' : LSB-80L-40K 4' : LSB-40L-40K	LED	8'-88W 4'-44W	CHAIN HUNG	VILLA LIGHTING
BE	CREE LED STRIP LUMINAIRE W/HANGERS 8' : LSB-80L-40K-EB14 4' : LSB-40L-40K-EB14	LED	8'-88W 4'-44W	CHAIN HUNG	VILLA LIGHTING
D	COPPER TRACK - L652P (TRACK) L901P (LIVE END) D - TRACK HEAD/LZR1320WH	LED	50W	CEILING	VILLA LIGHTING
G	COOPER WET LOCATION DOWN LIGHT -H7501CAT/RL560SN830	LED	9.4W	RECESSED	VILLA LIGHTING
C	EATON INDUSTRIAL LED LINEAR BAY 4LED-LD 4-9- W-FL-UN V-L835-CD1-U	LED	33W	SUSPENDED	VILLA LIGHTING
*	MACRO AIR AVD 370 - 12FT DIAMETER	LED	5.8A	CEILING	N.A.
S	REFLECTION 23" SCNCE/VANITY WS-59623-AL	LED	16W	WALL	VILLA LIGHTING
EM	EXITRONI X #LL50H - EMERGENCY LIGHTING 2 HEAD UNIT W/ BATTERY BACKUP	LED		SEE PLAN: MOUNT ON WALL/C.G.	VILLA LIGHTING
X	EXIT LIGHT CO. GLCELSM-G-BB LED EXIT WITH EMERGENCY BATTERY BACKUP	LED		SEE PLAN: MOUNT ON WALL/C.G.	VILLA LIGHTING
EX	EXIT LIGHT CO. #ELCCOMBOLP-G-BB EMERGENCY/EXIT COMBO WITH EMERGENCY BATTERY BACKUP	LED		SEE PLAN: MOUNT ON WALL/C.G.	VILLA LIGHTING
W	WALL PACK LIGHT FIXTURE	LED	20W	SEE PLAN: MOUNT ON WALL/C.G.	
P	WALL MOUNTED LIGHT FIXTURE	LED	20W	SEE PLAN: MOUNT ON WALL/C.G.	

NOTE: SELECT LIGHT FIXTURES WITH 1-PHASE, 120 VOLTS



SYMBOL	DESCRIPTION /MANUFACTURER MODEL NUMBER	LAMP	WATTAGE	MOUNTING	VENDOR
B	CREE LED STRIP LUMINAIRE W/HANGERS	LED	8'-88W	CHAIN HUNG	VILLA LIGHTING
B1	8' : LSB-80L-40K 4' : LSB-40L-40K		4'-44W		
BE	CREE LED STRIP LUMINAIRE W/HANGERS	LED	8'-88W	CHAIN HUNG	VILLA LIGHTING
BE1E	8' : LSB-80L-40K-EB14 4' : LSB-40L-40K-EB14		4'-44W		
B2	CREE LED STRIP LUMINAIRE W/HANGERS	LED	2'-44W		
EM	EXITRONI X #LL50H - EMERGENCY LIGHTING 2 HEAD UNIT W/ BATTERY BACKUP	LED		SEE PLAN: MOUNT ON WALL/C.G.	VILLA LIGHTING
X	EXIT LIGHT CO. GLCELSM-G-BB LED EXIT WITH EMERGENCY BATTERY BACKUP	LED		SEE PLAN: MOUNT ON WALL/C.G.	VILLA LIGHTING
EX	EXIT LIGHT CO. #ELCCOMBOLP-G-BB EMERGENCY/EXIT COMBO WITH EMERGENCY BATTERY BACKUP	LED		SEE PLAN: MOUNT ON WALL/C.G.	VILLA LIGHTING

NOTE: SELECT LIGHT FIXTURES WITH 1-PHASE, 120 VOLTS

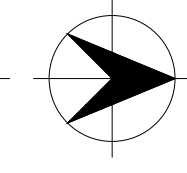
ELECTRICAL LIGHTING PLAN KEYED WORK NOTES:

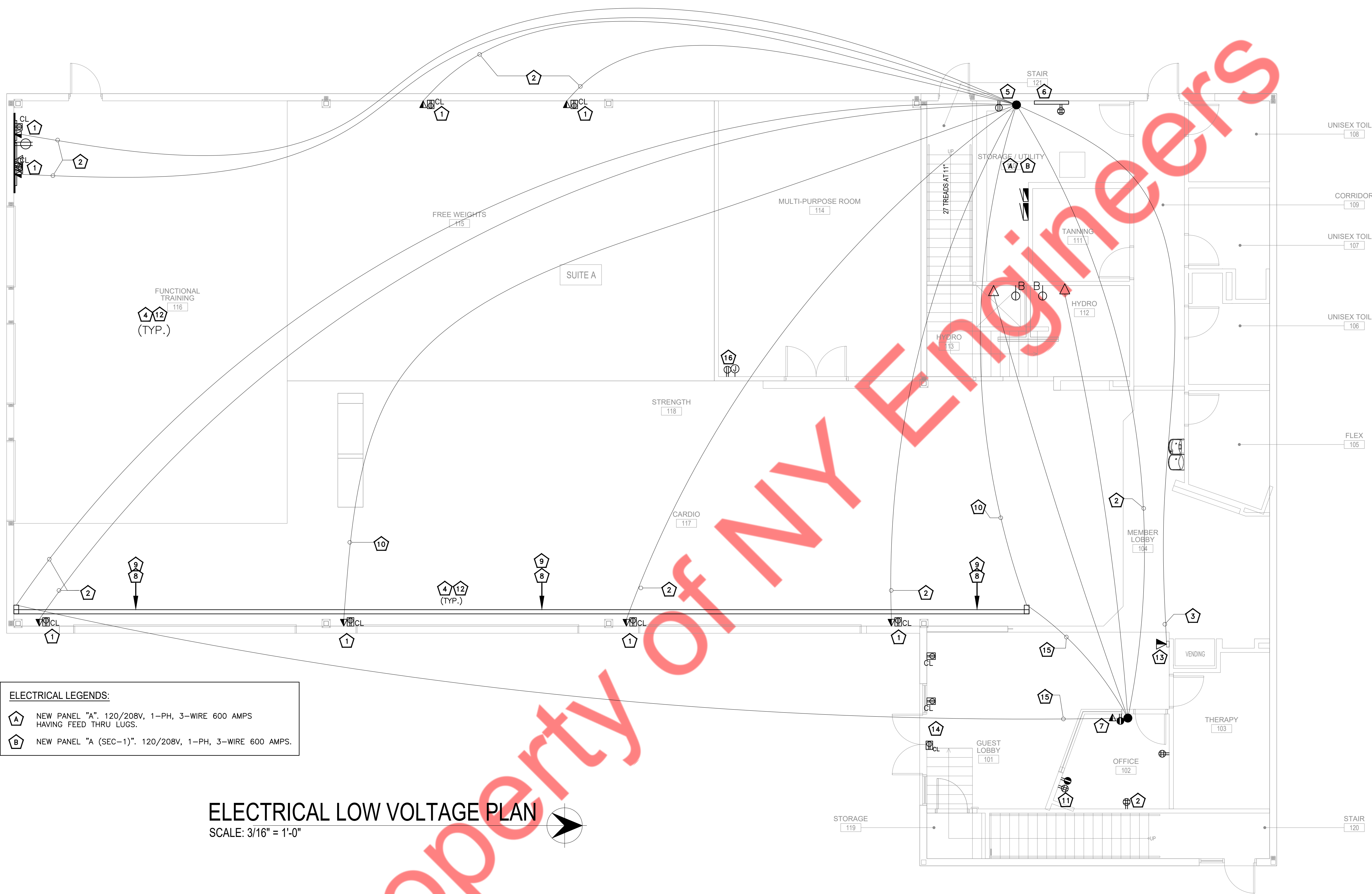
- 1. CIRCUIT NIGHT, EMERGENCY, AND EXIT LIGHTING FIXTURES AHEAD OF CONTROLS. THIS MAY BE IN ADDITION TO A SNATCHED HOT.
- 2. PROVIDE LUTRON MAESTRO WALL MOUNTED OCCUPANCY SENSOR MS-A102-O. INSTALL PER MANUFACTURER'S INSTALLATION GUIDE. WHERE LOCATED IN RESTROOM LOCATE IN FIRST FULL TILE FROM THE TOP. TILE STOPS AT 48" A.F.F. SET 11MEOUT TO MAX SETTING IN RESTROOMS.
- 3. CIRCUIT NIGHT, EMERGENCY, AND EXIT LIGHTING FIXTURES AHEAD OF CONTROLS. THIS MAY BE IN ADDITION TO A SNATCHED HOT.

GENERAL NOTES:

- 1. ALL BRANCH CIRCUITS UP TO 100' SHALL UTILIZE #12 CONDUCTORS MINIMUM. ALL BRANCH CIRCUITS FROM 101'-0" TO 150'-0" IN LENGTH SHALL UTILIZE #10 CONDUCTORS MINIMUM. ALL BRANCH CIRCUITS 151'-0" UP TO 250'-0" IN LENGTH SHALL UTILIZE #8 CONDUCTORS MINIMUM. CIRCUITS ABOVE 251'-0" SHALL UTILIZE #6 CONDUCTORS MINIMUM.
- 2. COORDINATE COLOR OF RECEPTACLES WITH OWNER ALL COVER PLATES SHALL BE STAINLESS STEEL. THIS INCLUDES COVERS FOR RECEPTACLES, SWITCHES, AND LOW VOLTAGE DEVICES.

2ND FLOOR ELECTRICAL LIGHTING PLAN
SCALE: 3/16" = 1'-0"





ELECTRICAL LEGENDS:

A	NEW PANEL "A". 120/208V, 1-PH, 3-WIRE 600 AMPS HAVING FEED THRU LUGS.
B	NEW PANEL "A (SEC-1)". 120/208V, 1-PH, 3-WIRE 600 AMPS.

ELECTRICAL LOW VOLTAGE PLAN
 SCALE: 3/16" = 1'-0"

- 1 TV OUTLET @ 9'-6" A.F.F.
- 2 TV COAXIAL
- 3 TELEPHONE CAT5
- 4 ALL CAT5, COAXIAL & LOW VOLT WIRING IN EXPOSED CEILING TO BE IN CONDUIT.
- 5 TV DEMARK LOCATED IN THE UTILITY ROOM. VERIFY PRIOR TO ROUGH-IN
- 6 TELEPHONE & INTERNET DEMARK LOCATED IN THE UTILITY ROOM. VERIFY PRIOR TO ROUGH-IN
- 7 DESK DATA POINT - REFER TO 4/LOW2 VERIFY EXACT LOCATION PRIOR TO ROUGH-IN.
- 8 WIREMOLD OUTLETS W/ 20 AMP DEDICATED CIRCUITS WITH COAXIAL AND DATA CABLE AND CONNECTIONS W/ HOME RUNS TO TV AND DATA DEMARCATION POINTS. ONE CAT5E AND ONE COAXIAL PER TV VIEW SCREEN. DO NOT DAISY CHAIN.
- 9 VERIFY EXACT LOCATION OF CARDIO EQUIPMENT WITH OWNER AND EQUIPMENT MANUFACTURER PRIOR TO ROUGH-IN. TV COAXIAL TYPICALLY ONE CABLE PER TV/VIEW SCREEN.
- 10 TV COAXIAL TYPICALLY ONE CABLE PER TV/VIEW SCREEN.
- 11 NERVE CENTER - REFER TO 5/LOW2.
- 12 GENERAL OUTLETS @ 1'-6" A.F.F.
- 13 EMERGENCY PHONE LOCATION - 48" MAXIMUM TO OPERABLE PARTS.
- 14 ABOVE DOOR/ CEILING FOR SECURITY SYSTEM. LABEL CIRCUIT IN PANEL "DOOR SECURITY".
- 15 CAT6 DATA INTERNET. TYPICALLY ONE CABLE PER TV/VIEW SCREEN.
- 16 FITNESS ON REQUEST (F.O.R.). REFER TO 3/LOW2 FOR INFORMATION ABOUT EQUIPMENT AND LAYOUT REQUIREMENTS.