

1ST FLOOR MECHANICAL FLOOR PLAN (TENANT#1)



HVAC LEGEND		MECHANICAL NOTES		DRAWING CODED NOTES		DRAWING CODED NOTES	
SYMBOL	DESCRIPTION	1. ALL EQUIPMENT, INSTALLATION AND MATERIALS SHALL COMPLY WITH ALL APPLICABLE LANDLORD CRITERIA.	① NEW ROOF TOP UNITS TO BE INSTALLED AS PER MANUFACTURER'S RECOMMENDATION. SEE SCHEDULE FOR AIR BALANCING AND SPECIFICATION. VERIFY EXACT LOCATION ON SITE.	⑦ FURNISH AND INSTALL NEW TANNING ROOM EXHAUST FAN EF-4. SUPPORT FROM STRUCTURE ABOVE. CONNECT WITH #8" RIGID DUCT W/BACK DRAFT DAMPER.	⑦ FURNISH AND INSTALL NEW TANNING ROOM EXHAUST FAN EF-4. SUPPORT FROM STRUCTURE ABOVE. CONNECT WITH #8" RIGID DUCT W/BACK DRAFT DAMPER.		
⊠	SUPPLY AIR DIFFUSER	2. THE CONTRACTOR SHALL BE RESPONSIBLE FOR FIELD VERIFYING, PRIOR TO FINAL BID, ALL EXISTING STUB-INS, TAPS, ETC. FOR PLUMBING AND MECHANICAL SYSTEMS WITHIN TENANT SPACE.	② ELECTRICAL CONTRACTOR TO FURNISH AND INSTALL NEW DUCT SMOKE DETECTOR IN RETURN MAIN DUCT AND REMOTE TEST STATION WITH VISIBLE AND AUDIBLE ALARM. SMOKE DETECTOR SHALL SHUT DOWN HVAC UNIT UPON DETECTION OF SMOKE. COORDINATE FINAL LOCATION OF REMOTE TEST STATION WITH AHU.	⑧ TENANT CONTRACTOR SHALL COORDINATE INSTALLATION OF DUCT DROP TO DIFFUSER LOCATED IN LAY-IN CEILING IN A MANNER TO LIMIT FLEX DUCT TO A MAXIMUM OF 14'-0". FLEX DUCT SHALL NOT BE VISIBLE FROM OPEN AREAS WITHIN TENANT SPACE.	⑧ TENANT CONTRACTOR SHALL COORDINATE INSTALLATION OF DUCT DROP TO DIFFUSER LOCATED IN LAY-IN CEILING IN A MANNER TO LIMIT FLEX DUCT TO A MAXIMUM OF 14'-0". FLEX DUCT SHALL NOT BE VISIBLE FROM OPEN AREAS WITHIN TENANT SPACE.		
⊠	SUPPLY AIR DIFFUSER	3. NO FIBERGLASS DUCT BOARD ALLOWED.	③ ROUTE FULL SIZE SUPPLY AIR DUCT DROP DOWN FROM SUPPLY AIR ROOF CURB OPENING AND TRANSITION INTO DUCTWORK AS SHOWN ON PLAN. VERIFY ROUTING, SIZE AND LOCATION ON SITE. BOTTOM OF SUPPLY AIR DUCT DROP SHALL TERMINATE AS HIGH AS POSSIBLE.	⑨ 2" WATER HEATER AIR INTAKE PIPE UP THROUGH ROOF.	⑨ 2" WATER HEATER AIR INTAKE PIPE UP THROUGH ROOF.		
⊠	RETURN AIR GRILLE	4. BRANCH DUCT RUN OUTS TO DIFFUSERS SHALL BE SAME SIZE AS DIFFUSER NECK UNLESS OTHERWISE SPECIFIED.	④ ROUTE FULL SIZE RETURN AIR DUCT DROP FROM RETURN AIR ROOF CURB OPENING AND PROVIDE 90° ELBOW AND TERMINATE AS HIGH AS POSSIBLE. COVER OPEN END OF RETURN DUCT WITH 1/2" MESH HARDWARE. CLOTH IN REMOVABLE METAL FRAME. BOTTOM OF RETURN AIR DUCT DROP SHALL TERMINATE AS HIGH AS POSSIBLE.	⑩ 2" WATER HEATER EXHAUST VENT PIPE UP THROUGH ROOF.	⑩ 2" WATER HEATER EXHAUST VENT PIPE UP THROUGH ROOF.		
⊠	CEILING MOUNTED EXHAUST FAN	5. THE CONTRACTOR SHALL BE RESPONSIBLE FOR ALL FINAL CONNECTIONS TO THE LANDLORD'S BASE SYSTEMS. COORDINATE ALL SYSTEMS IN THE FIELD.	⑤ FURNISH AND INSTALL NEW EXHAUST FANS AND CONNECT WITH #8" RIGID DUCT W/BACKDRAFT DAMPERS.	⑪ ROUTE #4" RIGID DUCT UP FROM CLOTHES DRYER AND TERMINATE AT THE ROOF. TERMINATE WITH GOOSENECK AND BIRD SCREEN.	⑪ ROUTE #4" RIGID DUCT UP FROM CLOTHES DRYER AND TERMINATE AT THE ROOF. TERMINATE WITH GOOSENECK AND BIRD SCREEN.		
⊠	THERMOSTAT	6. VERIFY LOCATION OF ANY PENETRATION OF ROOF WITH LANDLORD. ALL ROOF PENETRATIONS, PATCHING MID FLASHING SHALL BE BY LANDLORD APPROVED ROOFING CONTRACTOR AT TENANT CONTRACTOR'S EXPENSE.	⑥ FURNISH AND INSTALL NEW UTILITY ROOM EXHAUST FAN EF-5. SUPPORT FROM STRUCTURE ABOVE. CONNECT WITH #10" RIGID DUCT W/BACK DRAFT DAMPER.	⑫ INSTALL AND WIRE NEW 7-DAY PROGRAMMABLE THERMOSTAT. COORDINATE EXACT LOCATION WITH ARCHITECT AND OWNER PRIOR TO ROUGH-IN.	⑫ INSTALL AND WIRE NEW 7-DAY PROGRAMMABLE THERMOSTAT. COORDINATE EXACT LOCATION WITH ARCHITECT AND OWNER PRIOR TO ROUGH-IN.		
⊠	VOLUME DAMPER	7. PVC PIPING IS PROHIBITED.		⑬ PROVIDE AVERAGING SPACE TEMPERATURE SENSORS FOR THERMOSTAT SERVING DESIGNATED ROOF TOP UNIT. MOUNT AVERAGING SPACE TEMPERATURE SENSOR AT 48" ABOVE FINISHED FLOOR IN LOCATIONS SHOWN. PROVIDE INSULATED BASE WHEN LOCATED ON AN EXTERIOR WALL.	⑬ PROVIDE AVERAGING SPACE TEMPERATURE SENSORS FOR THERMOSTAT SERVING DESIGNATED ROOF TOP UNIT. MOUNT AVERAGING SPACE TEMPERATURE SENSOR AT 48" ABOVE FINISHED FLOOR IN LOCATIONS SHOWN. PROVIDE INSULATED BASE WHEN LOCATED ON AN EXTERIOR WALL.		
⊠	FLEXIBLE DUCT	8. ALL FIRE PROTECTION AND SPRINKLER WORK SHALL BE PERFORMED BY LANDLORD-APPROVED ARE PROTECTION CONTRACTOR AT THE TENANT'S EXPENSE.		⑭ DUCTS RUNNING THROUGH THE TRUSS OPENING.	⑭ DUCTS RUNNING THROUGH THE TRUSS OPENING.		
⊠	FIRE DAMPER	9. CONTRACTOR SHALL SUBMIT AIR BALANCE REPORT INCLUDING ALL ASSOCIATED AIR TEMPERATURES AND PRESSURES AS APPLICABLE. SEND TWO COPIES TO OWNER FOR APPROVAL.		⑮ DUCTS RUNNING BETWEEN THE TRUSSES.	⑮ DUCTS RUNNING BETWEEN THE TRUSSES.		
⊠	FIRE & SMOKE DAMPER	10. EXPOSED DUCTWORK SHALL BE STANDARD SPIRAL ROUND GALVANIZED SHEET METAL DUCTWORK 24 GAUGE UP TO 30", 22 GAUGE - 32" TO 50". ALL EXPOSED SPIRAL DUCTWORK SHALL BE INSTALLED AS HIGH AS POSSIBLE. COORDINATE ROUTING IN FIELD WITH OTHER TRADES PRIOR TO INSTALLATION. CONTACT ARCH. IF THERE ARE ANY FIELD DISCREPANCIES AND CONFLICTS.					
⊠	DUCT SMOKE DETECTOR						

UNIT TAG	LOCATION	TENANT	TR	SUPPLY AIRFLOW (CFM)	OUTSIDE AIR (CFM)	ESP (IN. OF W.C.)	MAX.FAN BHP	MCA/MOP (A)	V/PH/HZ	COOLING CAPACITY TOTAL (MBH)	COOLING CAPACITY SENSIBLE (MBH)	HEATING CAPACITY MBH INPUT	HEATING CAPACITY MBH OUTPUT	NATURAL GAS PRESS. INCH OF WC	MANUFACTURER & MODEL NO.	IEER	THERMAL EFF.(%)	EER	WEIGHT (LBS.)	REMARKS
RTU-1	1ST FLOOR ROOF	1ST FLOOR TENANT	7.5	3000	900	1	1.6	41/60	208-230/3/60	88	62.7	150	121.5	5-10.5	DAIKIN MPSA07DGC	14.8	81	11	1031	NEW
RTU-2	1ST FLOOR ROOF	1ST FLOOR TENANT	7.5	3000	900	1	1.6	41/60	208-230/3/60	88	62.7	150	121.5	5-10.5	DAIKIN MPSA07DGC	14.8	81	11	1031	NEW
RTU-3	1ST FLOOR ROOF	1ST FLOOR TENANT	7.5	3000	655	1	1.6	41/60	208-230/3/60	88	62.7	150	121.5	5-10.5	DAIKIN MPSA07DGC	14.8	81	11	1031	NEW
RTU-4	2ND FLOOR ROOF	1ST FLOOR TENANT	7.5	3000	415	1	1.6	41/60	208-230/3/60	88	62.7	150	121.5	5-10.5	DAIKIN MPSA07DGC	14.8	81	11	1031	NEW
RTU-5	2ND FLOOR ROOF	2ND FLOOR TENANT	7.5	3000	240	1	1.6	41/60	208-230/3/60	88	62.7	150	121.5	5-10.5	DAIKIN MPSA07DGC	14.8	81	11	1031	NEW

TAG	SERVICE	MOUNTING TYPE	DIMENSION (IN.)	ACCESSORIES	FINISH	MANUF.	MODEL NO.
A	SUPPLY	DUCT MTD.	30"x6"	OBD	SEE NOTE	TITUS	300RL
B	SUPPLY	DUCT MTD.	12"x8"	OBD	SEE NOTE	TITUS	300RL
C	SUPPLY	LAY-IN	24"x24"	OBD	SEE NOTE	TITUS	TMS
D	SUPPLY	LAY-IN	12"x12"	OBD	SEE NOTE	TITUS	TMS
E	RETURN	DUCT MTD.	18"x6"	OBD	SEE NOTE	TITUS	350RL
F	RETURN	DUCT MTD.	30"x6"	OBD	SEE NOTE	TITUS	350RL
G	RETURN	DUCT MTD.	10x6	OBD	SEE NOTE	TITUS	300RL
H	RETURN	DUCT MTD.	48X10	OBD	SEE NOTE	TITUS	300RL
I	SUPPLY	DUCT MTD.	10X6	OBD	SEE NOTE	TITUS	350RL
J	RETURN	LAY-IN	24"x24"	OBD	SEE NOTE	TITUS	TMS
K	RETURN	LAY-IN	30"x8"	OBD	SEE NOTE	TITUS	350RL

- REMARKS-
- PROVIDE DISCONNECT SWITCH.
 - PROVIDE NON-POWERED GFI OUTLET.
 - PROVIDE HINGED ACCESS PANELS AND EXTERNAL GAUGE PORTS/PRESSURE RESISTS.
 - PROVIDE 14" ROOF CURB.
 - BOTTOM SUPPLY AND RETURN DUCTS FOR RTU-1,2,3&5 AND HORIZONTAL SUPPLY AND RETURN DUCT FOR RTU-4.
 - PROVIDE ENTHALPY ECONOMIZER WITH 100% BAROMETRIC RELIEF.
 - ALL T-STAT PROVIDED WITH LOCKING COVERS.
 - 7 DAYS PROGRAMMABLE THERMOSTAT.
 - PROVIDE HOT GAS BYPASS SYSTEM. THE CAPACITY OF HOT GAS BYPASS SHALL BE LIMITED TO 50% OF TOTAL UNIT CAPACITY.
 - PROVIDE REHEAT MODE TO CONTROL HUMIDITY.

FAN TAG	SERVICE	AIRFLOW (CFM)	ESP (IN.WG)	ELECTRIC POWER	V/PH.	MANUF. & MODEL NO.	WEIGHT (LBS)	REMARK
EF-1	UNISEX TOILET	70	0.3	6 WATTS	115/1	GREENHECK SP-80-VG	12	1-2
EF-2	UNISEX TOILET	70	0.3	6 WATTS	115/1	GREENHECK SP-80-VG	12	1-2
EF-3	UNISEX TOILET	70	0.3	6 WATTS	115/1	GREENHECK SP-80-VG	12	1-2
EF-4	TANNING	100	0.3	1/15 HP	115/1	GREENHECK SQ-60-VG	32	1-2
EF-5	STORAGE/UTILITY	250	0.3	1/10 HP	115/1	GREENHECK SQ-80-VG	49	1-2

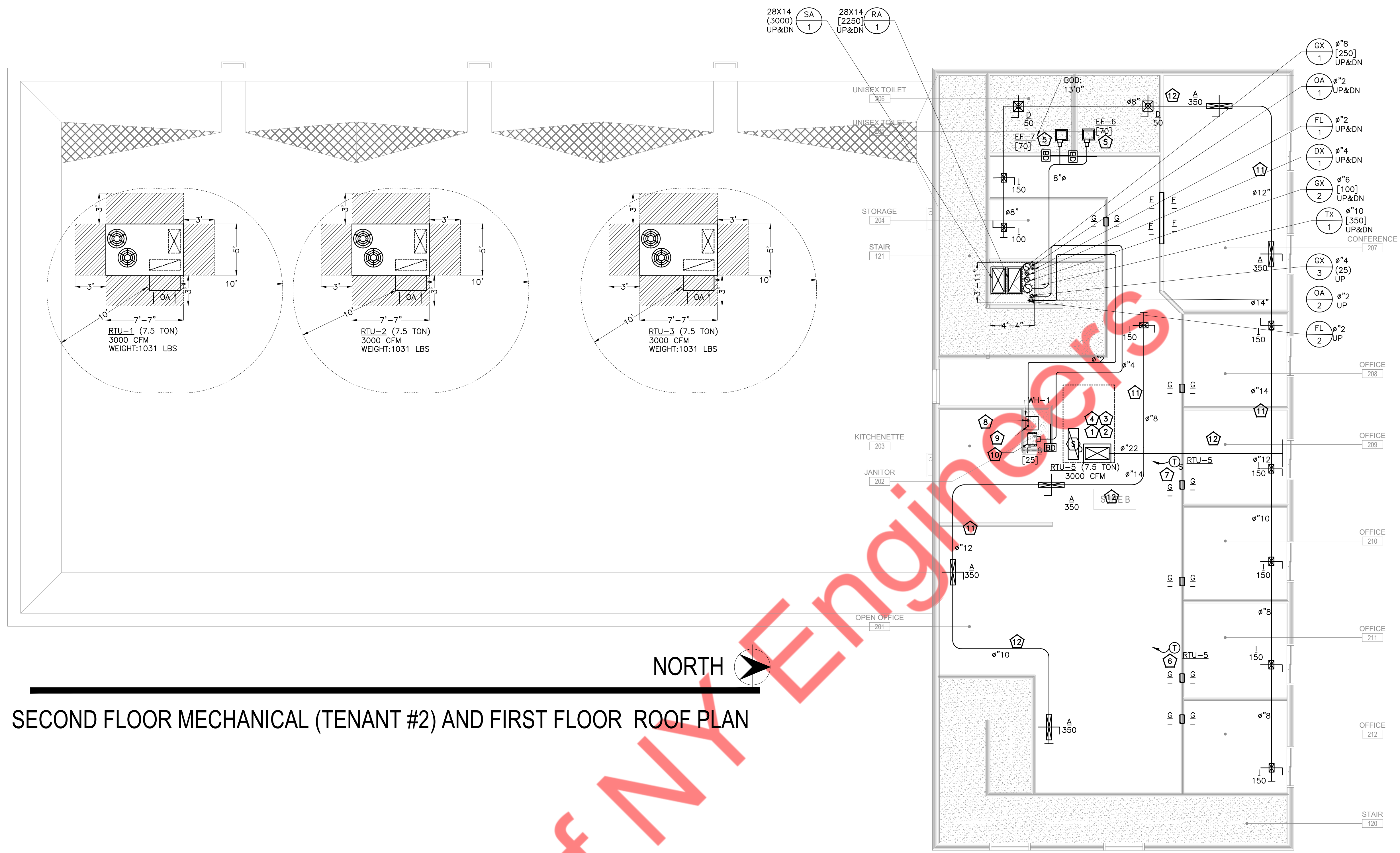
- REMARKS-
- DISCONNECT SWITCH GRAVITY BACKDRAFT DAMPER, FLEXIBLE DUCT COLLAR CONNECTION.
 - ELECTRICAL CONTRACTOR SHALL INTERLOCK WITH ROOM LIGHT CONTROLLED VIA LIGHT SWITCH IN RESTROOM

- NOTES-
- ALL GRILLES, REGISTERS & DIFFUSERS MUST BE PAINTED TO MATCH CEILING TILE COLOR. VERIFY EXACT COLOR WITH ARCHITECT.
 - APPROVED EQUALS ACCEPTED.

ROOM NAME	AREA (SQ.FT.)	NUMBER OF PEOPLE/1000sq.ft AS PER 2012 IMC	NUMBER OF PEOPLE 2012 IMC	NUMBER OF CHAIR	FINAL PEOPLE NO.	MIN OUTSIDE AIR AS PER 2012 IMC CFM/PEOPLE	CFM/SQ.FT	REQ. OA (CFM)	PROVIDED OA (CFM)	EXHAUST AIRFLOW RATE (CFM/SQ.FT OR/FIXTURE)	REQ. EXHAUST (CFM)	PROV. EXHA (CFM)
115 FREE WEIGHT	2695	10	27	55	55	20	0.06	1262	1280	0	0	0
116 FUNCTIONAL TRAINING	780	10	8	17	17	20	0.06	387	390	0	0	0
117 CARDIO	1130	10	12	23	23	20	0.06	528	530	0	0	0
118 MULTI PURPOSE	540	10	6	11	11	20	0.06	252	255	0	0	0
TOTAL								2429	2455	-	0	0

ROOM NAME	AREA (SQ.FT.)	NUMBER OF PEOPLE/1000sq.ft AS PER 2012 IMC	NUMBER OF PEOPLE 2012 IMC	NUMBER OF CHAIR	FINAL PEOPLE NO.	MIN OUTSIDE AIR AS PER 2012 IMC CFM/PEOPLE	CFM/SQ.FT	REQ. OA (CFM)	PROVIDED OA (CFM)	EXHAUST AIRFLOW RATE (CFM/SQ.FT OR/FIXTURE)	REQ. EXHAUST (CFM)	PROV. EXHA (CFM)
101 GUEST LOBBY	335	30	11	4	11	7.5	0.18	143	150	0	0	0
102 OFFICE	100	5	1	1	1	5	0.06	11	15	0	0	0
103 THERAPY	150	10	2	2	2	20	0.06	49	50	0	0	0
104 MEMBERS LOBBY	240	30	8	3	8	7.5	0.18	103	110	0	0	0
105 FLEX	85	5	1	2	2	5	0.06	15	20	0	0	0
106 UNISEX TOILET	73	0	0	0	0	0	0	0	0	70	70	
107 UNISEX TOILET	73	0	0	0	0	0	0	0	0	70	70	
108 UNISEX TOILET	64	0	0	0	0	0	0	0	0	70	70	
109 CORRIDOR	143	5	1	0	1	5	0.06	14	20	0	0	0
110 UTILITY/STORAGE	255	0	0	0	0	0	0	0	0	1	255	
111 TANNING	87	10	1	2	2	20	0.06	45	50	1	87	
TOTAL								380	415	-	552	560

ROOM NAME	AREA (SQ.FT.)	NUMBER OF PEOPLE/1000sq.ft AS PER 2012 IMC	NUMBER OF PEOPLE 2012 IMC	NUMBER OF CHAIR	FINAL PEOPLE NO.	MIN OUTSIDE AIR AS PER 2012 IMC CFM/PEOPLE	CFM/SQ.FT	REQ. OA (CFM)	PROVIDED OA (CFM)	EXHAUST AIRFLOW RATE (CFM/SQ.FT OR/FIXTURE)	REQ. EXHAUST (CFM)	PROV. EXHA (CFM)
OPEN OFFICE	930	5	5	5	5	5	0.06	81	90	0	0	0
KITCHENETTE	35	0	0	0	0	0	0	0	0	0	0	
UNISEX TOILET	58	0	0	0	0	0	0	0	0	70	70	
UNISEX TOILET	58	0	0	0	0	0	0	0	0	70	70	
JANITOR	9	0	0	0	0	0	0	0	0	1.0	2	
STORAGE	61	0	0	0	0	0	0.12	7	10	0	0	
CONFERENCE ROOM	272	50	14	14	14	5	0.06	86	90	0	0	
OFFICE 1	90	5	1	1	1	5	0.06	10	10	0	0	
OFFICE 2	90	5	1	1	1	5	0.06	10	10	0	0	
OFFICE 3	90	5	1	1	1	5	0.06	10	10	0	0	
OFFICE 4	90	5	1	1	1	5	0.06	10	10	0	0	
OFFICE 5	90	5	1	1	1	5	0.06	10	10	0	0	
TOTAL								226	240	-	-	16



SECOND FLOOR MECHANICAL (TENANT #2) AND FIRST FLOOR ROOF PLAN

MECHANICAL NOTES
1. ALL EQUIPMENT, INSTALLATION AND MATERIALS SHALL COMPLY WITH ALL APPLICABLE LANDLORD CRITERIA.
2. THE CONTRACTOR SHALL BE RESPONSIBLE FOR FIELD VERIFYING, PRIOR TO FINAL BID, ALL EXISTING STUB-INS, TAPS, ETC. FOR PLUMBING AND MECHANICAL SYSTEMS WITHIN TENANT SPACE.
3. NO FIBERGLASS DUCT BOARD ALLOWED.
4. BRANCH DUCT RUN OUTS TO DIFFUSERS SHALL BE SAME SIZE AS DIFFUSER NECK UNLESS OTHERWISE SPECIFIED.
5. THE CONTRACTOR SHALL BE RESPONSIBLE FOR ALL FINAL CONNECTIONS TO THE LANDLORD'S BASE SYSTEMS. COORDINATE ALL SYSTEMS IN THE FIELD.
6. VERIFY LOCATION OF ANY PENETRATION OF ROOF WITH LANDLORD. ALL ROOF PENETRATIONS, PATCHING MID FLASHING SHALL BE BY LANDLORD APPROVED ROOFING CONTRACTOR AT TENANT CONTRACTOR'S EXPENSE.
7. PVC PIPING IS PROHIBITED.
8. ALL FIRE PROTECTION AND SPRINKLER WORK SHALL BE PERFORMED BY LANDLORD-APPROVED ARE PROTECTION CONTRACTOR AT THE TENANT'S EXPENSE.
9. CONTRACTOR SHALL SUBMIT AIR BALANCE REPORT INCLUDING ALL ASSOCIATED AIR TEMPERATURES AND PRESSURES AS APPLICABLE. SEND TWO COPIES TO OWNER FOR APPROVAL.
10. EXPOSED DUCTWORK SHALL BE STANDARD SPIRAL-ROUND GALVANIZED SHEET METAL DUCTWORK 24 GAUGE UP TO 30", 22 GAUGE - 32" TO 50". ALL EXPOSED SPIRAL DUCTWORK SHALL BE INSTALLED AS HIGH AS POSSIBLE. COORDINATE ROUTING IN FIELD WITH OTHER TRADES PRIOR TO INSTALLATION. CONTACT ARCH. IF THERE ARE ANY FIELD DISCREPANCIES AND CONFLICTS.

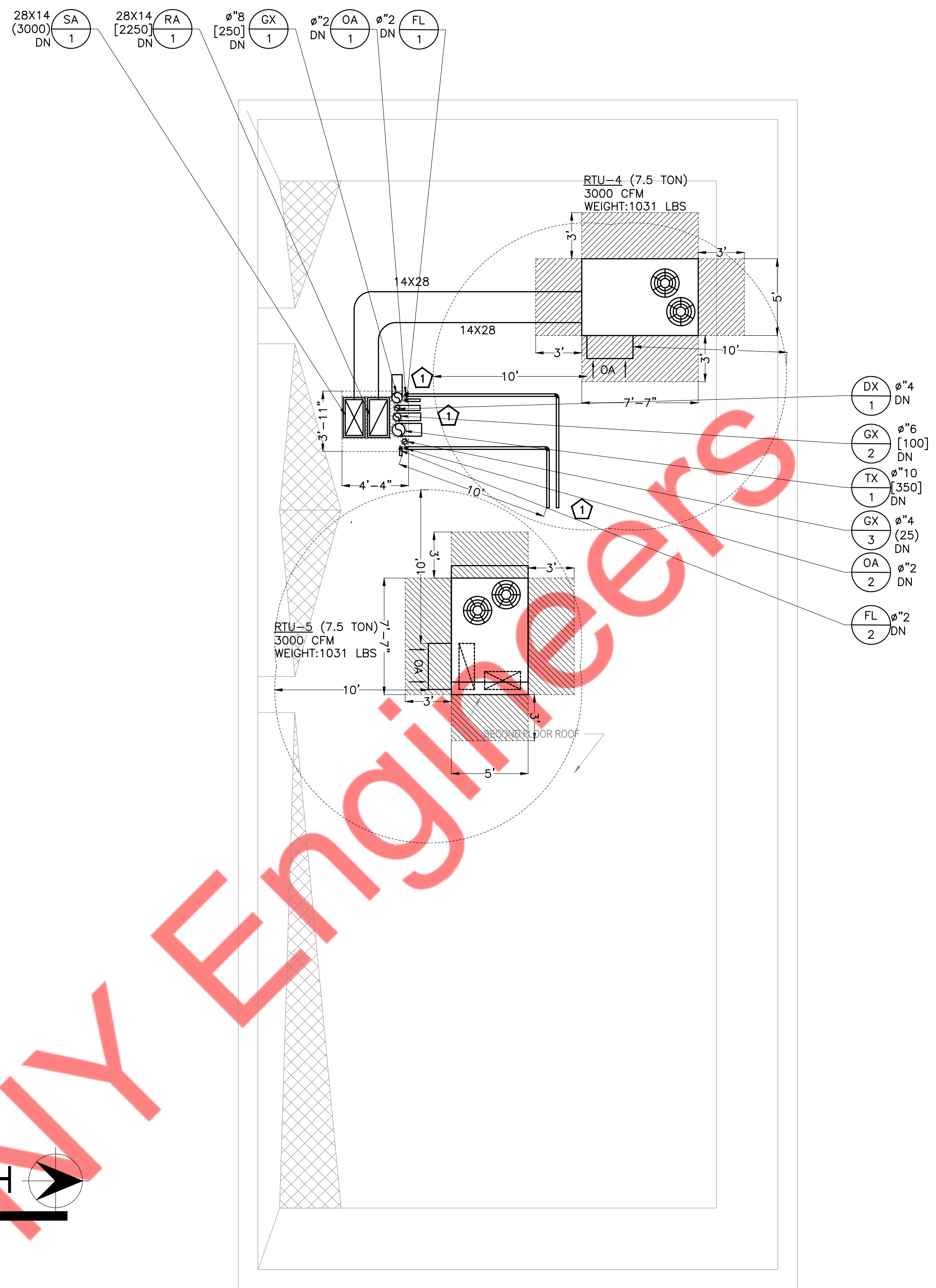
DRAWING CODED NOTES
① NEW ROOF TOP UNITS TO BE INSTALLED AS PER MANUFACTURER'S RECOMMENDATION. SEE SCHEDULE FOR AIR BALANCING AND SPECIFICATION. VERIFY EXACT LOCATION ON SITE.
② ELECTRICAL CONTRACTOR TO FURNISH AND INSTALL NEW DUCT SMOKE DETECTOR IN RETURN MAIN DUCT AND REMOTE TEST STATION WITH VISIBLE AND AUDIBLE ALARM. SMOKE DETECTOR SHALL SHUT DOWN HVAC UNIT UPON DETECTION OF SMOKE. COORDINATE FINAL LOCATION OF REMOTE TEST STATION WITH AHJ.
③ ROUTE FULL SIZE SUPPLY AIR DUCT DROP DOWN FROM SUPPLY AIR ROOF CURB OPENING AND TRANSITION INTO DUCTWORK AS SHOWN ON PLAN. VERIFY ROUTING, SIZE AND LOCATION ON SITE. BOTTOM OF SUPPLY AIR DUCT DROP SHALL TERMINATE AS HIGH AS POSSIBLE.
④ ROUTE FULL SIZE RETURN AIR DUCT DROP FROM RETURN AIR ROOF CURB OPENING AND PROVIDE 90° ELBOW AND TERMINATE AS HIGH AS POSSIBLE. COVER OPEN END OF RETURN DUCT WITH 1/2" MESH HARDWARE CLOTH IN REMOVABLE METAL FRAME. BOTTOM OF RETURN AIR DUCT DROP SHALL TERMINATE AS HIGH AS POSSIBLE.
⑤ FURNISH AND INSTALL NEW EXHAUST FANS AND CONNECT WITH #8" RIGID DUCT W/BACKDRAFT DAMPERS.
⑥ INSTALL AND WIRE NEW 7-DAY PROGRAMMABLE THERMOSTAT. COORDINATE EXACT LOCATION WITH ARCHITECT AND OWNER PRIOR TO ROUGH-IN.

DRAWING CODED NOTES
⑦ PROVIDE AVERAGING SPACE TEMPERATURE SENSORS FOR THERMOSTAT SERVING DESIGNATED ROOF TOP UNIT. MOUNT AVERAGING SPACE TEMPERATURE SENSOR AT 48" ABOVE FINISHED FLOOR IN LOCATIONS SHOWN. PROVIDE INSULATED BASE WHEN LOCATED ON AN EXTERIOR WALL.
⑧ 2" WATER HEATER AIR INTAKE PIPE UP THROUGH ROOF.
⑨ 2" WATER HEATER EXHAUST VENT PIPE UP THROUGH ROOF.
⑩ FURNISH AND INSTALL NEW EXHAUST FANS AND CONNECT WITH #8" RIGID DUCT W/BACKDRAFT DAMPERS.
⑪ DUCTS RUNNING THROUGH THE TRUSS OPENING.
⑫ DUCTS RUNNING BETWEEN THE TRUSSES.

EXHAUST FAN SCHEDULE								
FAN TAG	SERVICE	AIRFLOW (CFM)	ESP (IN.WG)	ELECTRIC POWER	V/PH.	MANUF. & MODEL NO.	WEIGHT (LBS)	REMARK
EF-6	UNISEX TOILET	70	0.3	6 WATTS	115/1	GREENHECK SP-80-VG	12	1-2
EF-7	UNISEX TOILET	70	0.3	6 WATTS	115/1	GREENHECK SP-80-VG	12	1-2
EF-8	JANITOR	25	0.3	12 WATTS	115/1	GREENHECK SP-A70	12	1-2

REMARKS-

- DISCONNECT SWITCH GRAVITY BACKDRAFT DAMPER, FLEXIBLE DUCT COLLAR CONNECTION.
- ELECTRICAL CONTRACTOR SHALL INTERLOCK WITH ROOM LIGHT CONTROLLED VIA LIGHT SWITCH IN RESTROOM



NORTH

2ND FLOOR ROOF PLAN

MECHANICAL NOTES	DRAWING CODED NOTES
<ol style="list-style-type: none"> 1. ALL EQUIPMENT, INSTALLATION AND MATERIALS SHALL COMPLY WITH ALL APPLICABLE LANDLORD CRITERIA. 2. THE CONTRACTOR SHALL BE RESPONSIBLE FOR FIELD VERIFYING, PRIOR TO FINAL BID, ALL EXISTING STUB-INS, TAPS, ETC. FOR PLUMBING AND MECHANICAL SYSTEMS WITHIN TENANT SPACE. 3. NO FIBERGLASS DUCT BOARD ALLOWED. 4. BRANCH DUCT RUN OUTS TO DIFFUSERS SHALL BE SAME SIZE AS DIFFUSER NECK UNLESS OTHERWISE SPECIFIED. 5. THE CONTRACTOR SHALL BE RESPONSIBLE FOR ALL FINAL CONNECTIONS TO THE LANDLORD'S BASE SYSTEMS. COORDINATE ALL SYSTEMS IN THE FIELD. 6. VERIFY LOCATION OF ANY PENETRATION OF ROOF WITH LANDLORD. ALL ROOF PENETRATIONS, PATCHING MID FLASHING SHALL BE BY LANDLORD APPROVED ROOFING CONTRACTOR AT TENANT CONTRACTOR'S EXPENSE. 7. PVC PIPING IS PROHIBITED. 8. ALL FIRE PROTECTION AND SPRINKLER WORK SHALL BE PERFORMED BY LANDLORD-APPROVED FIRE PROTECTION CONTRACTOR AT THE TENANT'S EXPENSE. 9. CONTRACTOR SHALL SUBMIT AIR BALANCE REPORT INCLUDING ALL ASSOCIATED AIR TEMPERATURES AND PRESSURES AS APPLICABLE. SEND TWO COPIES TO OWNER FOR APPROVAL. 10. EXPOSED DUCTWORK SHALL BE STANDARD SPIRAL ROUND GALVANIZED SHEET METAL DUCTWORK 24 GAUGE UP TO 30", 22 GAUGE - 32" TO 50". ALL EXPOSED SPIRAL DUCTWORK SHALL BE INSTALLED AS HIGH AS POSSIBLE. COORDINATE ROUTING IN FIELD WITH OTHER TRADES PRIOR TO INSTALLATION. CONTACT ARCH. IF THERE ARE ANY FIELD DISCREPANCIES AND CONFLICTS. 	<p> ROUTE EXHAUST DUCT UP THRU ROOF AND TERMINATE WITH A GOOSENECK W/ BIRD SCREEN 24" ABOVE ROOF. MAINTAIN A MINIMUM OF 10'-0" DISTANCE FROM OUTDOOR AIR INTAKES. VERIFY ROUTING AND LOCATION ON SITE.</p>