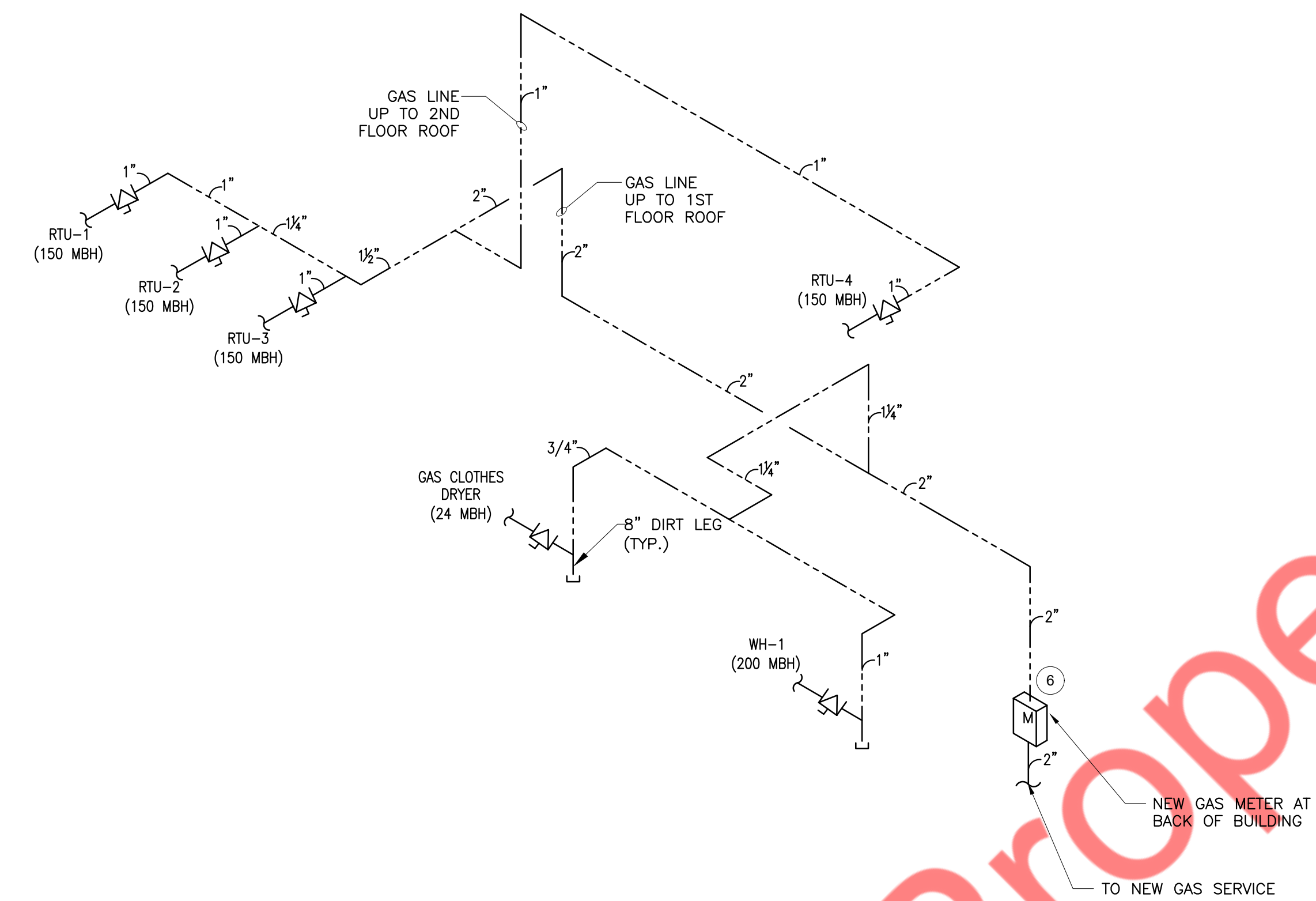
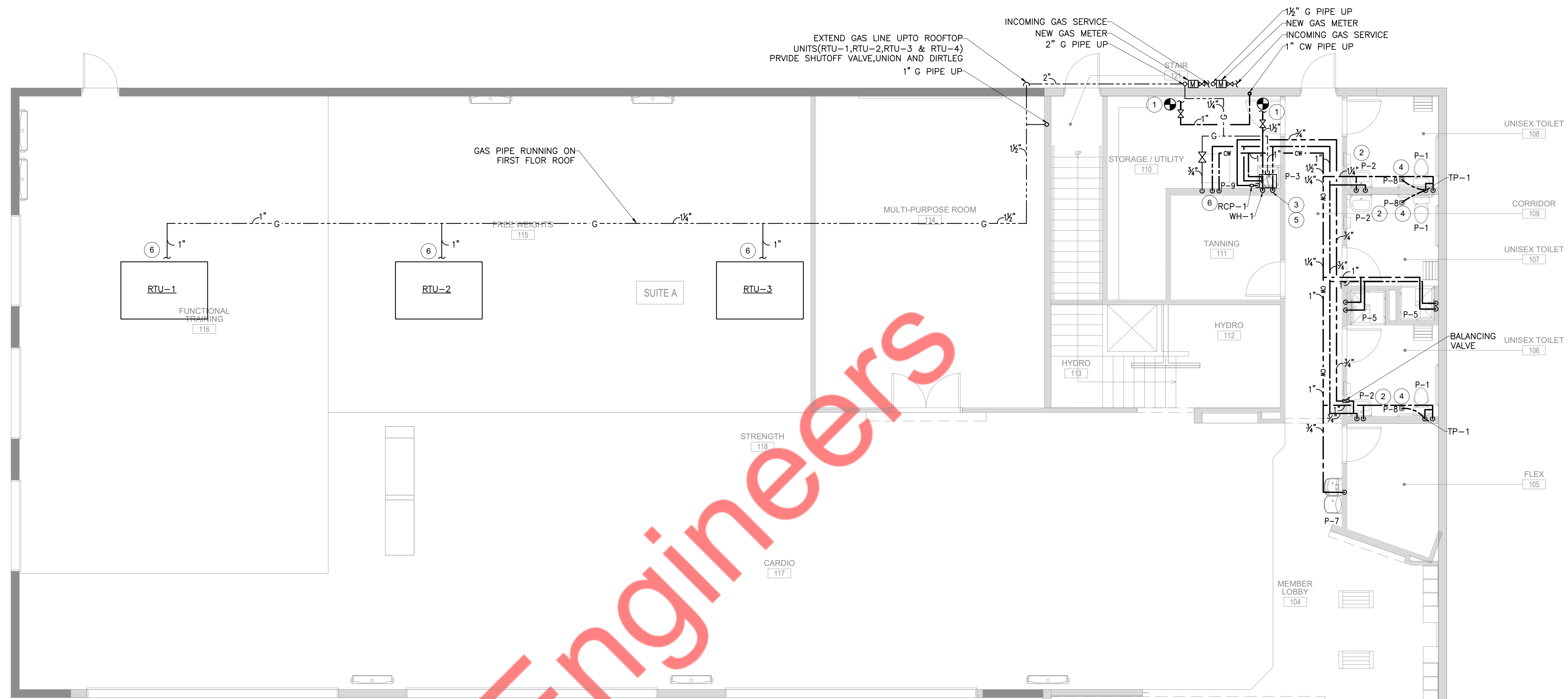
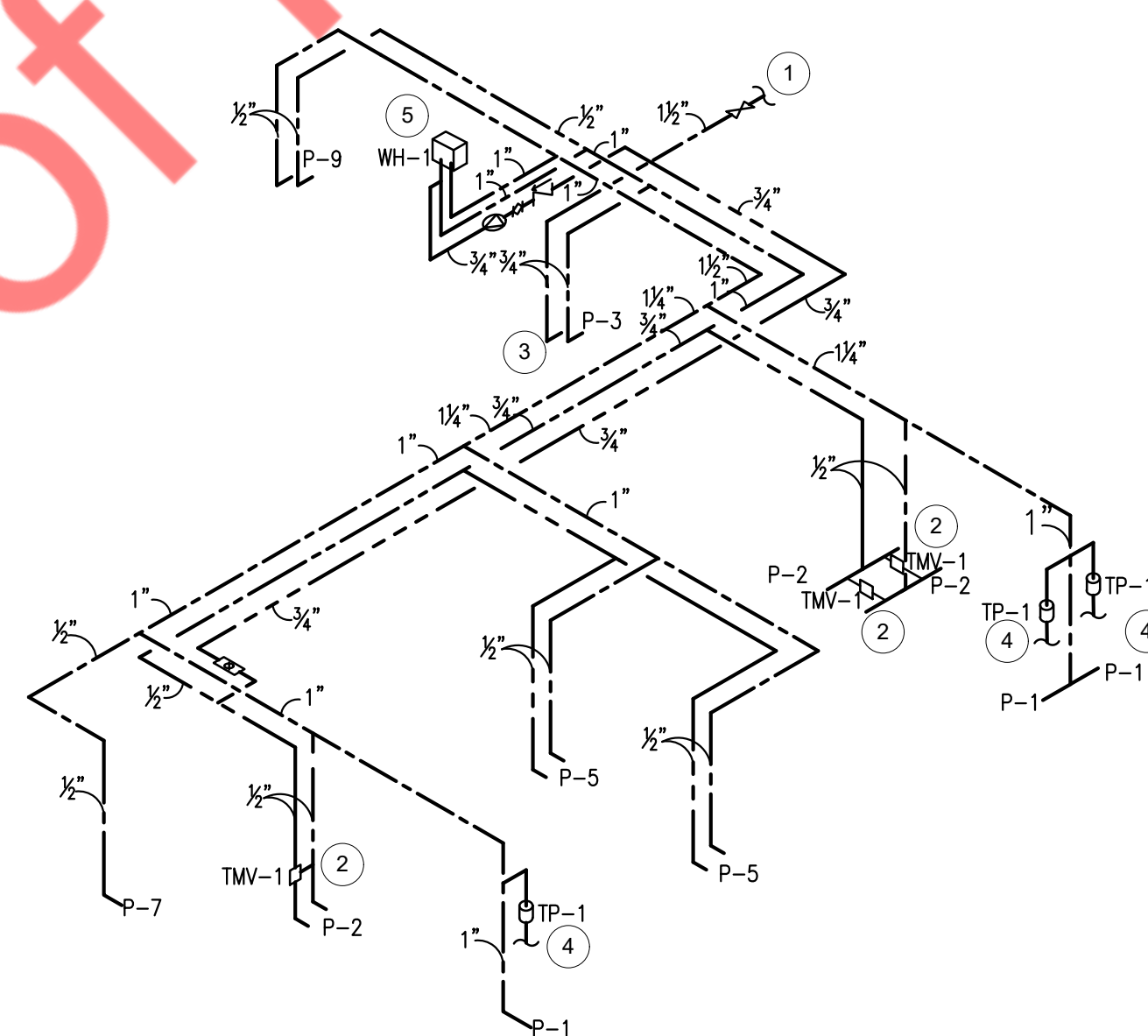


PLUMBING LEGEND	
SYMBOL	DESCRIPTION
— SAN —	SANITARY SEWER (UNDERFLOOR)
---	VENT PIPING
---	COLD WATER PIPING
---	HOT WATER PIPING
---	HOT WATER RETURN PIPING
— C —	GAS PIPING

FIXTURE UNIT COUNT							
ITEM	DESCRIPTION	QUANTITY	TRAP SIZE	D.F.U.	TOTAL D.F.U.	W.S.F.U.	TOTAL W.S.F.U.
P-1	WATER CLOSET (TANK TYPE)	3	3"	4	12	10	30
P-2	LAVATORY	3	1.5"	2	6	2	6
P-3	MOP SINK	1	2"	2	2	3	3
P-4	FLOOR DRAIN (SHOWER)	2	3"	2	4	—	—
P-5	SHOWER FAUCET	2	—	—	—	4	8
P-7	DRINK FOUNTAIN	1	1.5"	0.5	0.5	0.5	0.5
P-8	FLOOR DRAIN (EMGY)	3	3"	0	0	—	—
P-9	CLOTHES WASHER WALL BOX	1	2"	2	2	3	3
TOTAL FIXTURE UNITS:					26.5		50.5
W.S.F.U.	50.5 FU = 50 GPM						
D.F.U.	26.5 FU = 4" PIPING HORIZONTAL @ 1/8" PER FLOOR SLOPE						



GAS PIPING RISER DIAGRAM



WATER PIPING RISER DIAGRAM

DOMESTIC WATER AND GAS PIPING PLAN NOTES:

- ROUTE NEW 1-1/2" CW PIPING WITH SHUT OFF VALVE WITH AND TIE-INTO THE EXISTING WATER SERVICE. CONTRACTOR TO FIELD VERIFY SIZE, ROUTING AND ANY BACKFLOW PREVENTER AND WATER SUBMETER REQUIREMENTS WITH LANDLORD PRIOR TO BID.
- PROVIDE HOT WATER MIXING VALVE (TMV-1). SET MAX. OUTLET TEMP. AT 110°F.
- ROUTE T&P RELIEF TO DRAIN IN MOP SINK.
- TRAP PRIMER (TP-1) EXTEND AND CONNECT 1/2" TRAP PRIMER PIPING TO FLOOR DRAINS WITH TRAP PRIMER CONNECTIONS. COORDINATE ROUTING.
- CONTRACTOR TO INSTALL NEW EXPANSION TANK AMTROL MODEL ST-12, 4.4 GAL PER LOCAL CODE REQUIREMENTS.
- EXTEND AND CONNECT NEW 2" GAS PIPING SERVING NEW WATER HEATER, CLOTHES DRYER AND ROOFTOP UNITS TO NEW GAS METER/SERVICE SERVING TENANT SPACE.

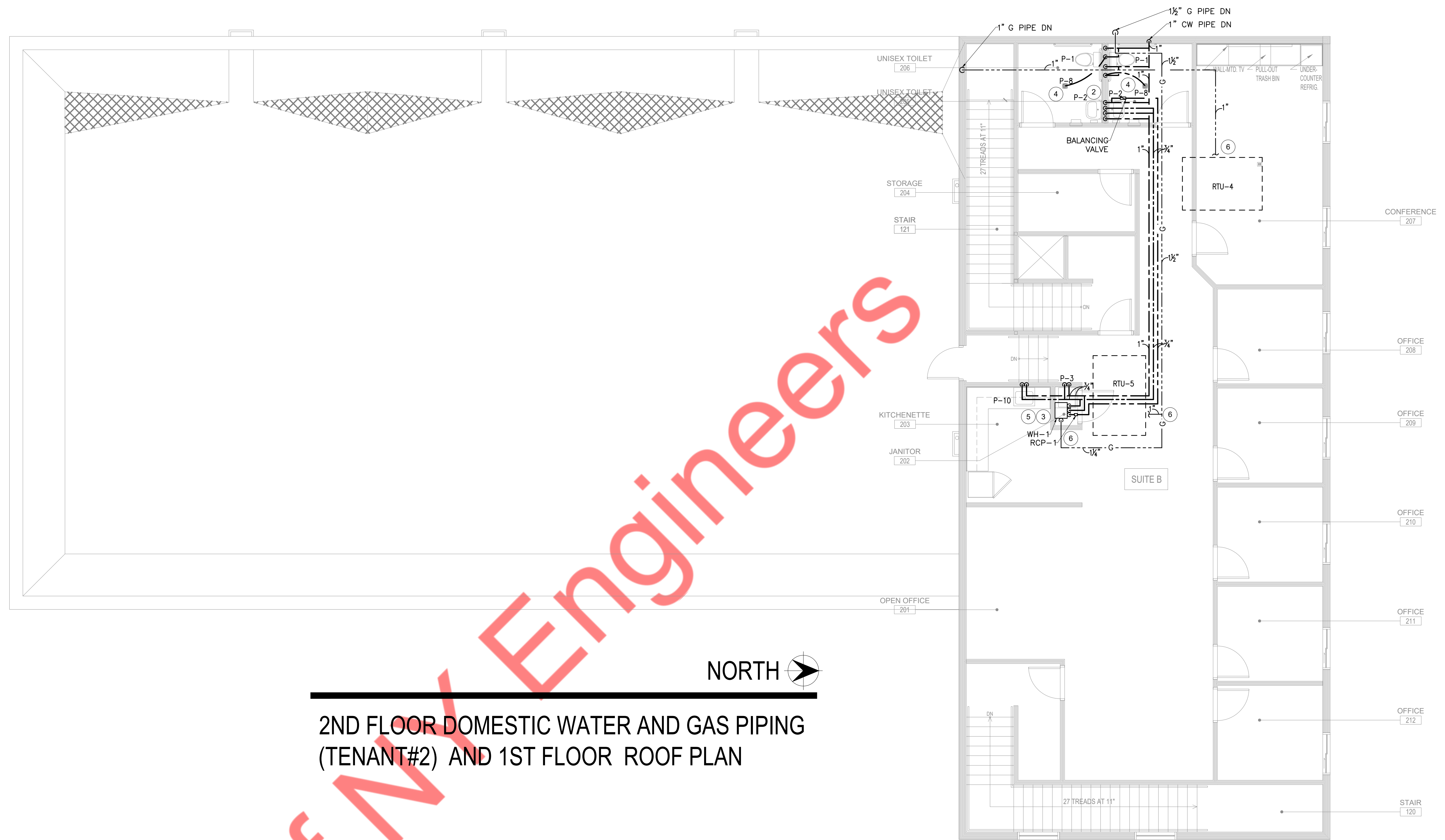
GAS LOAD SUMMARY	
EQUIPMENT TAG	CFH LOAD
RTU-1	150
RTU-2	150
RTU-3	150
RTU-4	150
WH-1	200
CLOTHES DRYER	24
TOTAL GAS LOAD	824

INSTANTANEOUS GAS WATER HEATER SCHEDULE						
EQUIP NO	STORAGE CAPACITY	FLOW RATE GPM (67° / 35F) TEMP RISE	MIN./MAX. GAS INPUT MBH	MANUF.	MODEL NO	REMARKS
WH-1	1	5.6 / 11.2	19.9 / 200	NAVIEN	NPE-240A	DIRECT VENT INTAKE/EXHAUST WATER HEATER

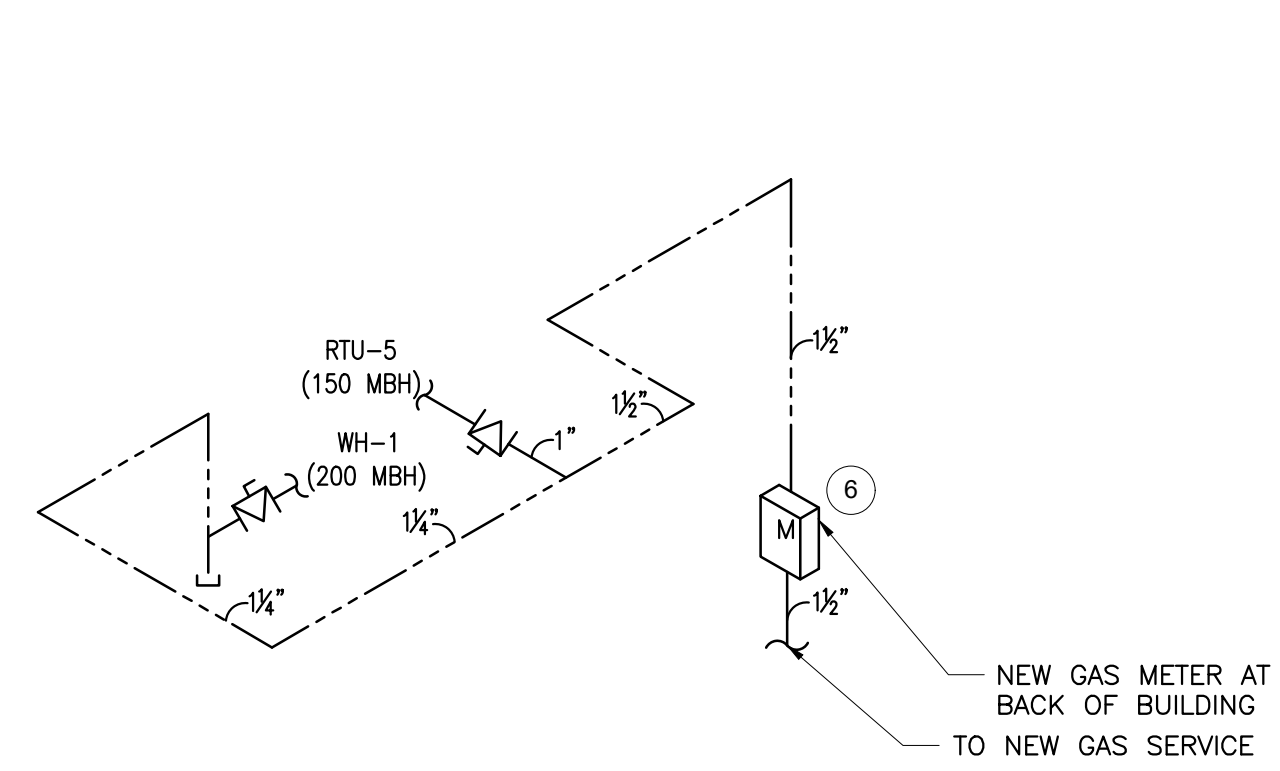
NOTE: NSF RATED. PROVIDE CONDENSATE COLLECTOR, DRAIN TO MOP SINK. PROVIDE WITH VACUUM RELIEF VALVE. ROUTE COMBUSTION AIR AND EXHAUST AIR PIPING THRU EXTERIOR SIDEWALL PER MANUFACTURERS INSTRUCTIONS. MOUNT ON WALL WITH BOTTOM OF WATER HEATER 7'-0" A.F.F. COORDINATE EXACT LOCATION WITH OWNER IN FIELD. PIPE INSULATION : PROVIDE HOT WATER PIPING WITH 1" INSULATION HAVING CONDUCTIVITY OF MINIMUM OF 0.27 BTU PER INCH.

PLUMBING LEGEND	
SYMBOL	DESCRIPTION
— SAN —	SANITARY SEWER (UNDERFLOOR)
----	VENT PIPING
----	COLD WATER PIPING
----	HOT WATER PIPING
----	HOT WATER RETURN PIPING
— G —	GAS PIPING

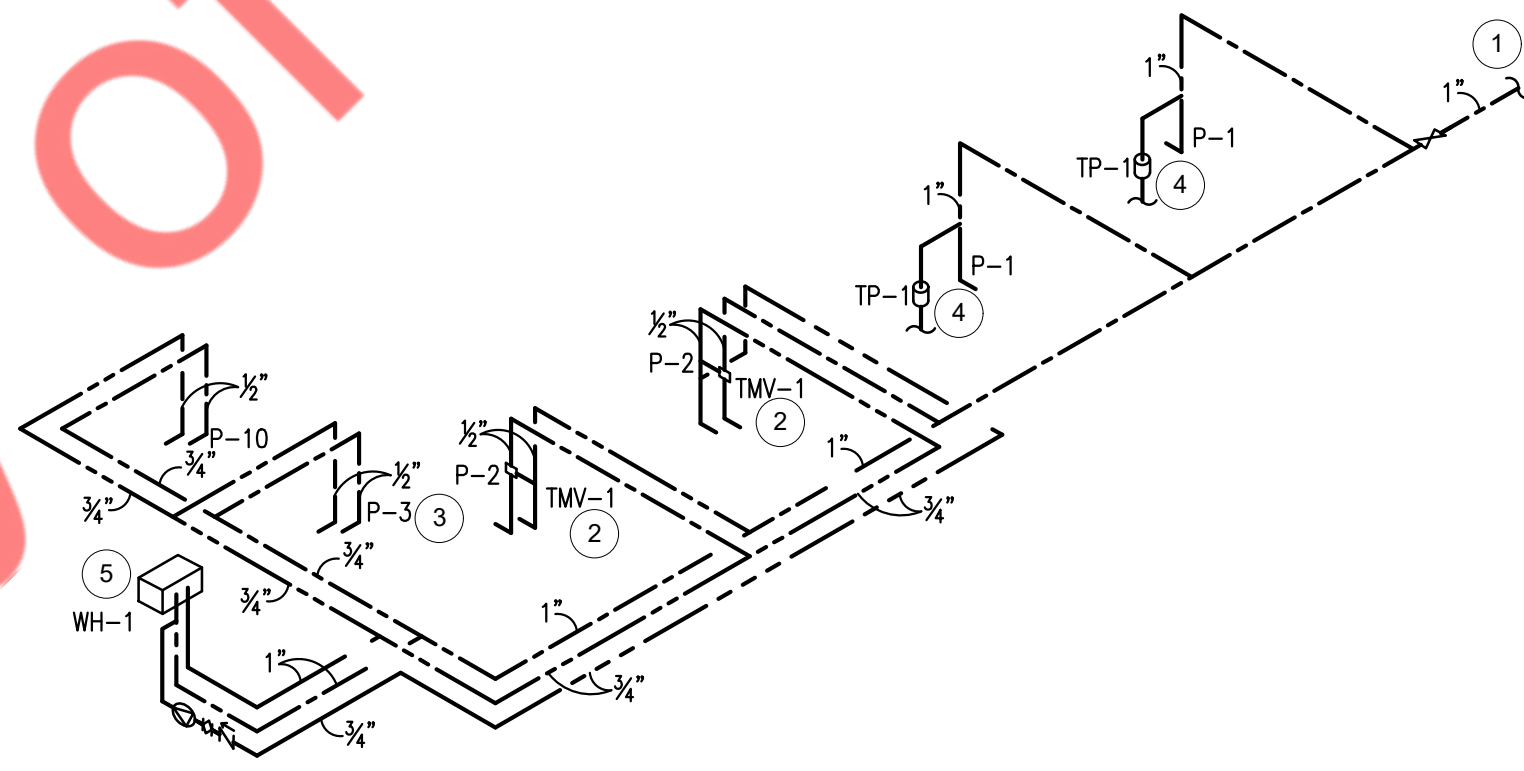
FIXTURE UNIT COUNT							
ITEM	DESCRIPTION	QUANTITY	TRAP SIZE	D.F.U.	TOTAL D.F.U.	W.S.F.U.	TOTAL W.S.F.U.
P-1	WATER CLOSET (TANK TYPE)	2	3"	4	8	10	20
P-2	LAVATORY	2	1.5"	2	4	2	4
P-3	MOP SINK	1	2"	2	2	3	3
P-8	FLOOR DRAIN (EMCY)	2	3"	0	0	-	-
P-10	KITCHEN SINK	1	2"	2	2	2	2
TOTAL FIXTURE UNITS:					16.0		29.0
W.S.F.U.	29.0 FU = 24 GPM						
D.F.U.	16.0 FU = 4" PIPING HORIZONTAL @ 1/8" PER FLOOR SLOPE						



2ND FLOOR DOMESTIC WATER AND GAS PIPING (TENANT#2) AND 1ST FLOOR ROOF PLAN



GAS PIPING RISER DIAGRAM



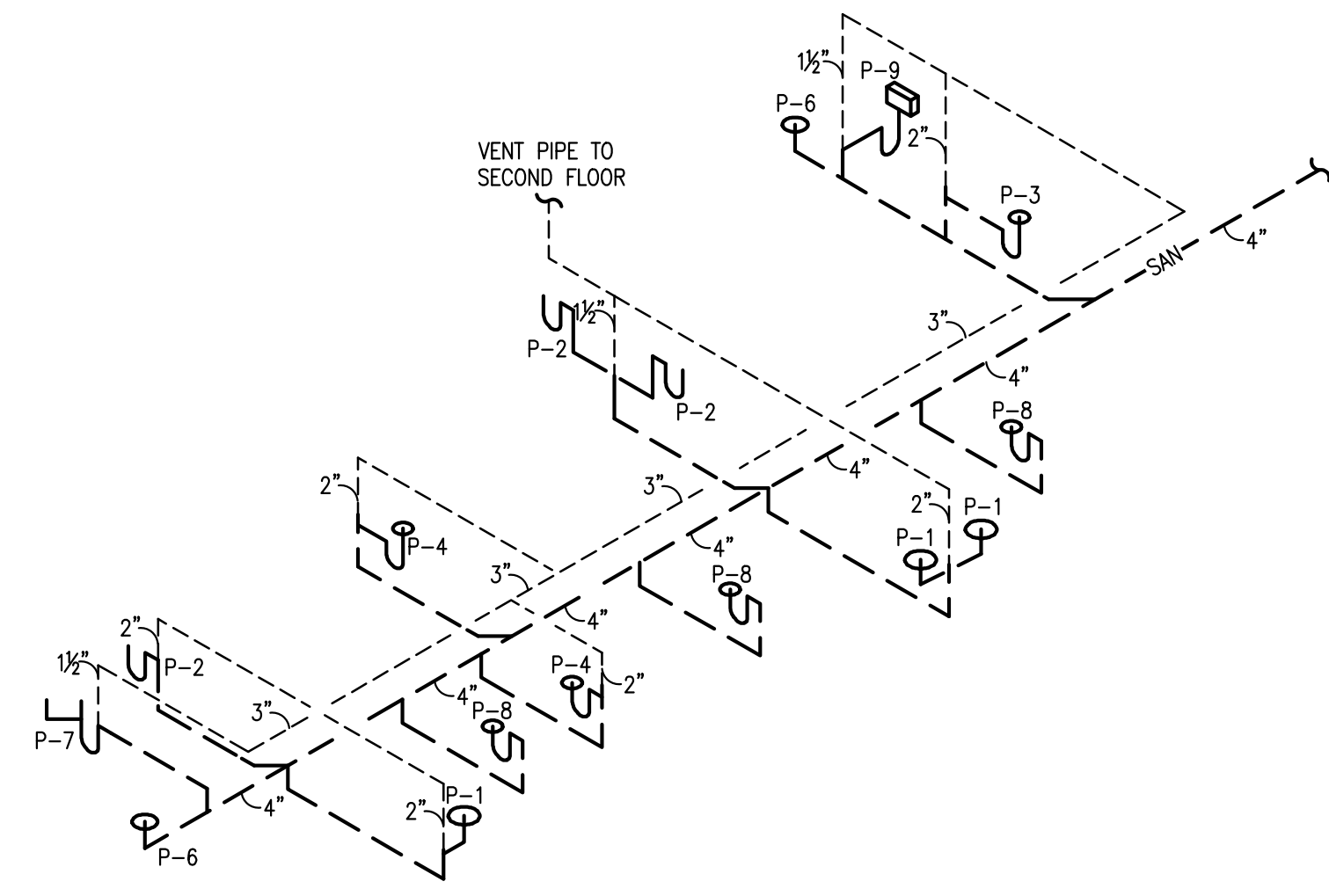
WATER PIPING RISER DIAGRAM

- DOMESTIC WATER AND GAS PIPING PLAN NOTES:
- ROUTE NEW 1" CW PIPING WITH SHUT OFF VALVE WITH AND TIE-INTO THE EXISTING WATER SERVICE. CONTRACTOR TO FIELD VERIFY SIZE, ROUTING AND ANY WATER SUBMETER REQUIREMENTS WITH LANDLORD PRIOR TO BID.
  - PROVIDE HOT WATER MIXING VALVE (TMW-1). SET MAX. OUTLET TEMP. AT 110°F.
  - ROUTE T&P RELIEF TO DRAIN IN MOP SINK.
  - TRAP PRIMER (TP-1) EXTEND AND CONNECT 1/2" TRAP PRIMER PIPING TO FLOOR DRAINS WITH TRAP PRIMER CONNECTIONS. COORDINATE ROUTING.
  - CONTRACTOR TO INSTALL NEW EXPANSION TANK AMTROL MODEL ST-12, 4.4 GAL PER LOCAL CODE REQUIREMENTS.
  - EXTEND AND CONNECT NEW 1-1/2" GAS PIPING SERVING NEW WATER HEATER AND ROOFTOP UNITS TO NEW GAS METER/SERVICE SERVING TENANT SPACE.

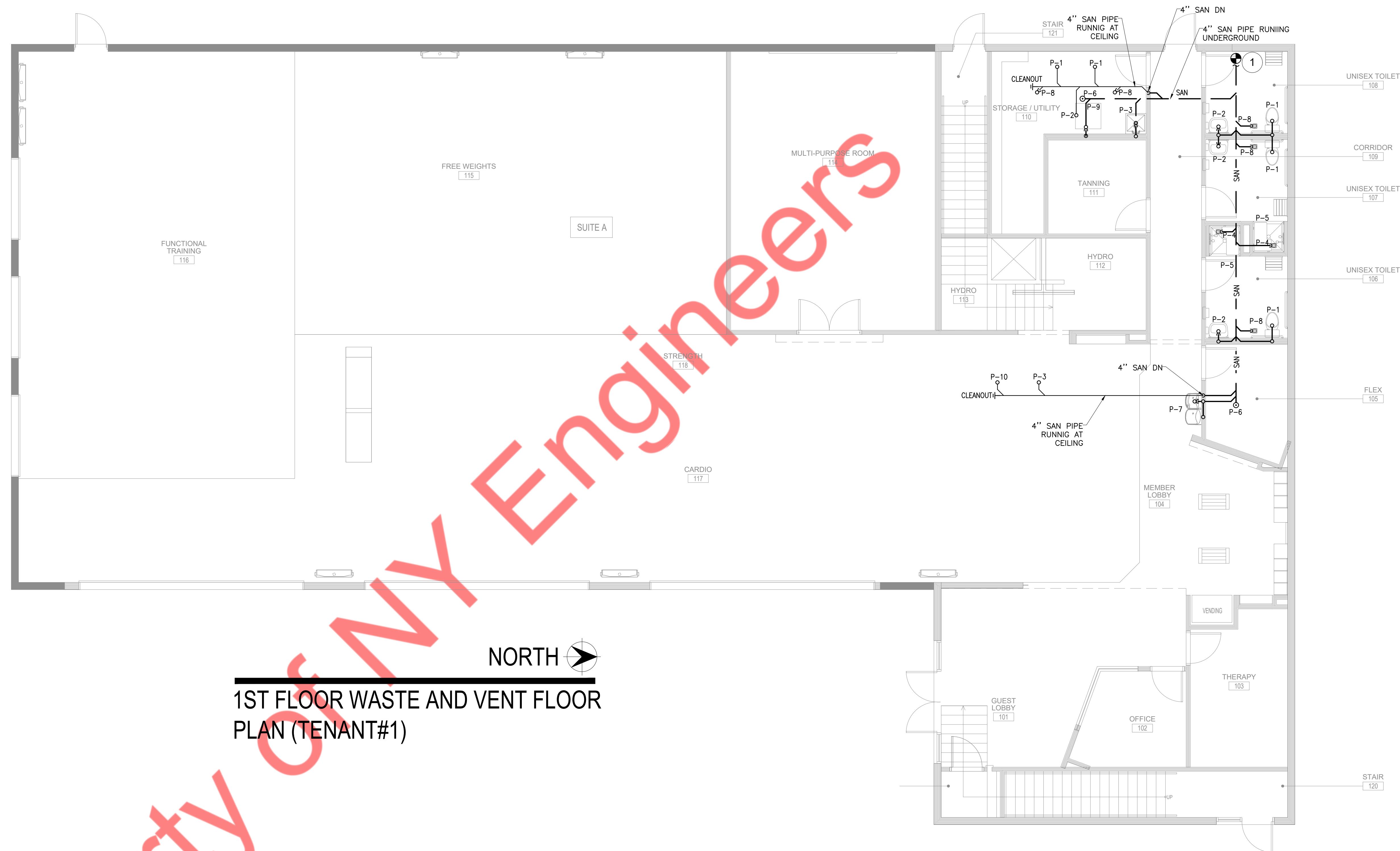
GAS LOAD SUMMARY	
EQUIPMENT TAG	CFH LOAD
RTU-5	150
WH-1	200
TOTAL GAS LOAD	350

INSTANTANEOUS GAS WATER HEATER SCHEDULE						
EQUIP NO	STORAGE CAPACITY	FLOW RATE GPM (67° / 35F) TEMP RISE	MIN./MAX. GAS INPUT MBH	MANUF.	MODEL NO	REMARKS
WH-1	1	5.6 / 11.2	19.9 / 200	NAVIENT	NPE-240A	DIRECT VENT INTAKE/EXHAUST WATER HEATER

NOTE: NSF RATED. PROVIDE CONDENSATE COLLECTOR, DRAIN TO MOP SINK. PROVIDE WITH VACUUM RELIEF VALVE. ROUTE COMBUSTION AIR AND EXHAUST AIR PIPING THRU EXTERIOR SIDEWALL PER MANUFACTURERS INSTRUCTIONS. MOUNT ON WALL WITH BOTTOM OF WATER HEATER 7'-0" A.F.F. COORDINATE EXACT LOCATION WITH OWNER IN FIELD. PIPE INSULATION: PROVIDE HOT WATER PIPING WITH 1" INSULATION HAVING CONDUCTIVITY OF MINIMUM OF 0.27 BTU PER INCH.



WASTE AND VENT RISER DIAGRAM



NORTH  
1ST FLOOR WASTE AND VENT FLOOR PLAN (TENANT#1)

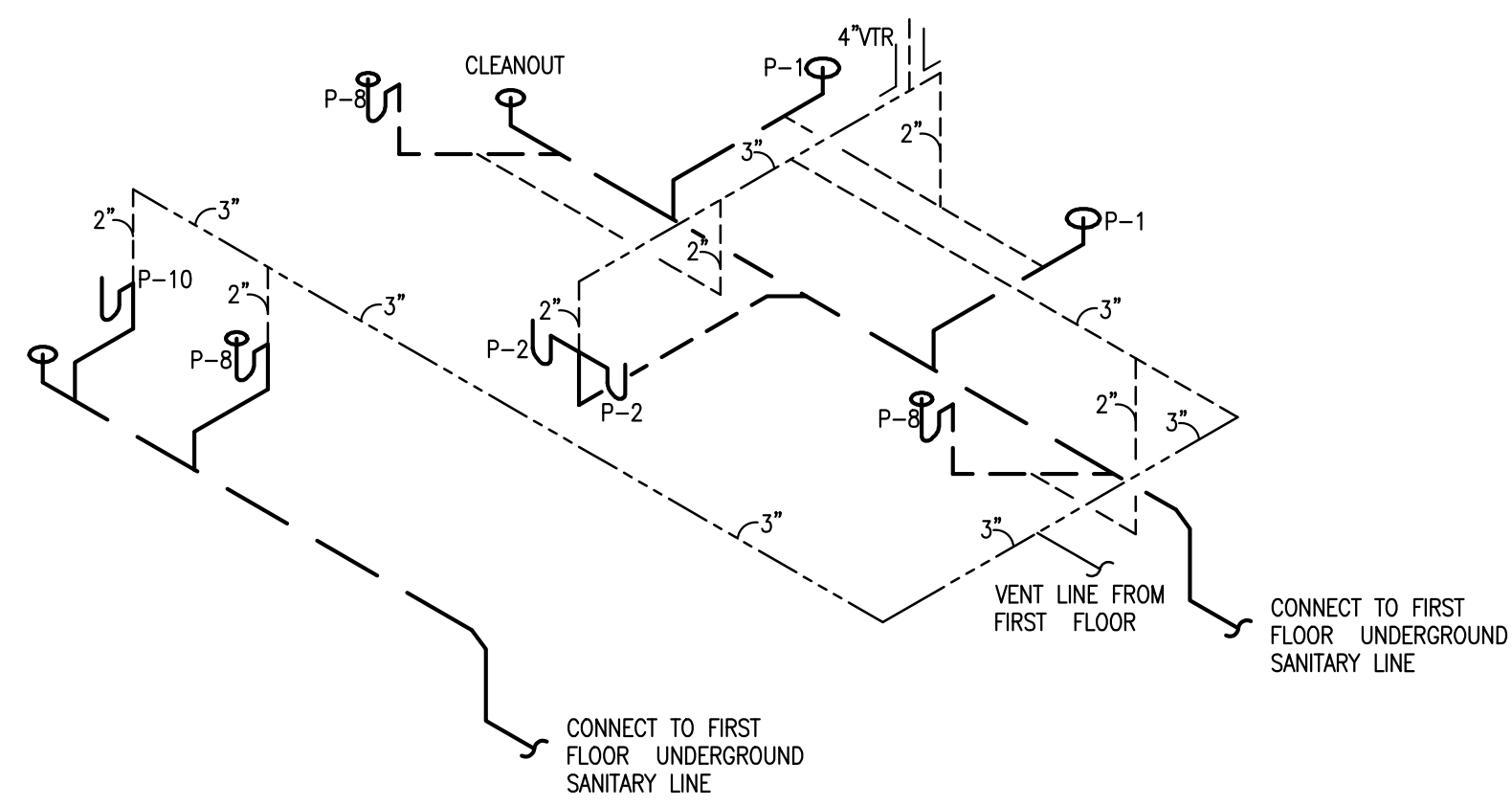
PLUMBING FIXTURE SCHEDULE

FIXTURE NO	TYPE	MANUFACTURER MODEL	DIRECT WASTE	INDIRECT WASTE	VENT	CW	HW	REMARKS
P-1	WATER CLOSET	AMERICAN STANDARD: MADERA 3043.001 FLOWISE ELONGATED FLUSHMETER TOILET - FURNISH WITH SEAT MODEL NO. 5901.100. - A.D.A. COMPLIANT. COLOR TO BE WHITE.	3"	-	2"	1"	-	FURNISH WITH AMERICAN STANDARD SELECTRONIC FLUSH VALVE 6065.121.002 - 1.28 GPF - ADA COMPLANT
P-2	LAVATORY	AMERICAN STANDARD: LUCERNE 0355.012	2"	-	1-1/2"	1/2"	1/2"	FURNISH WITH AMERICAN STANDARD AUTOMATIC METERING FAUCET: 6055.25 W/ BATTERY POWER SUPPLY. -50 GALLON PER FLOW ACTIVATION - ADA COMPLIANT
P-3	MOP SINK	SWANSTONE: MS-2424 BASIN	2"	-	2"	3/4"	3/4"	PROVIDE CHICAGO FAUCET: 897-RCF, INTEGRAL VACUUM BREAKER - VERIFY ACCESSORIES W/ OWNER
P-4	SHOWER FLOOR DRAIN	ZURN: Z415 (ADJUSTABLE)	3"	-	2"	-	-	6" /E TYPE 'N' NICKEL BRONZE TOP
P-5	SINGLE SHOWER W/ ROUGH-IN	DELTA: T13H152-05 / R10000-UNWS	-	-	-	1/2"	1/2"	ADA, AND SHOWER W/ OPTIONAL 36" SLIDE BAR - 1.5 GPM W/ INTEGRAL THERMOSTATIC MIXING VALVE AND BACKFLOW PREVENTER.
P-6	CLEANOUT	ZURN: ZN-1400 (ADJUSTABLE)	4"	-	-	-	-	NICKLE BRONZE TOP
P-7	ST/UNLESS STEEL BI-LEVEL DRINKING FOUNTAIN / BOTTLE FILLING STATION	ELKAY MODEL VRCTLR8WSK - ADA COMPLIANT DRINKING FOUNTAIN	2"	-	1-1/2"	-	-	FURNISHED AND INSTALLED BY PLUMBING CONTRACTOR PER ADA AND LOCAL CODE REQUIREMENTS. ACCESSORY APRON TO BE INSTALLED ON "HIGH" DRINKING FOUNTAIN. APPROVED EQUALS ACCEPTED.
P-8	FLOOR DRAIN	ZURN: Z415 (ADJUSTABLE)	3"	-	2"	-	-	6" /E TYPE 'N' NICKEL BRONZE TOP W/ TRAP PRIMER CONNECTION
P-9	ENCASED WASHER WALL BOX	ZURN: WM2961 ENCASED WASHING MACHINE VALVE	2"	-	1-1/2"	1/2"	1/2"	-
P-10	KITCHEN SINK	29 X 24 X 30 INCH KOHLER 3935-4-NA TOP MOUNT SINGLE BOWL STEEL KITCHEN SINK WITH TALL APRON FOR 30 INCH CABINET OR SIMILAR.	2"	-	1-1/2"	1/2"	1/2"	
TMV-1	THERMOSTATIC MIXING VALVE	WATTS: LFMV	-	-	-	1/2"	1/2"	THERMAL MIXING VALVE. MAX OUTLET TEMP. 110 DEG F. IN ACCORDANCE WITH ANSI/ASSE 1017, 1069 & 1070 LISTINGS
TP-1	TRAP PRIMER	PPP: P1-500 W/ADAPTER	-	-	-	1/2"	-	INTEGRAL BFP AND VACUUM BREAKER MOUNT ABOVE CEILING
RCP-1	HOT WATER RECIRC. PUMP	BELL & GOSSET MODEL NBF-25	-	-	-	-	3/4"	H.W. RECIRCULATION SYSTEM - BELL & GOSSET MODEL NBF-25, SPEED 2, 125 WATTS, 1.10 FLA., 115V., 1 PH., RATED @ 2 GPM, @ 12 FT OF HEAD ; BRONZE IN-LINE. PROVIDE WITH AQUASTAT CONTROL

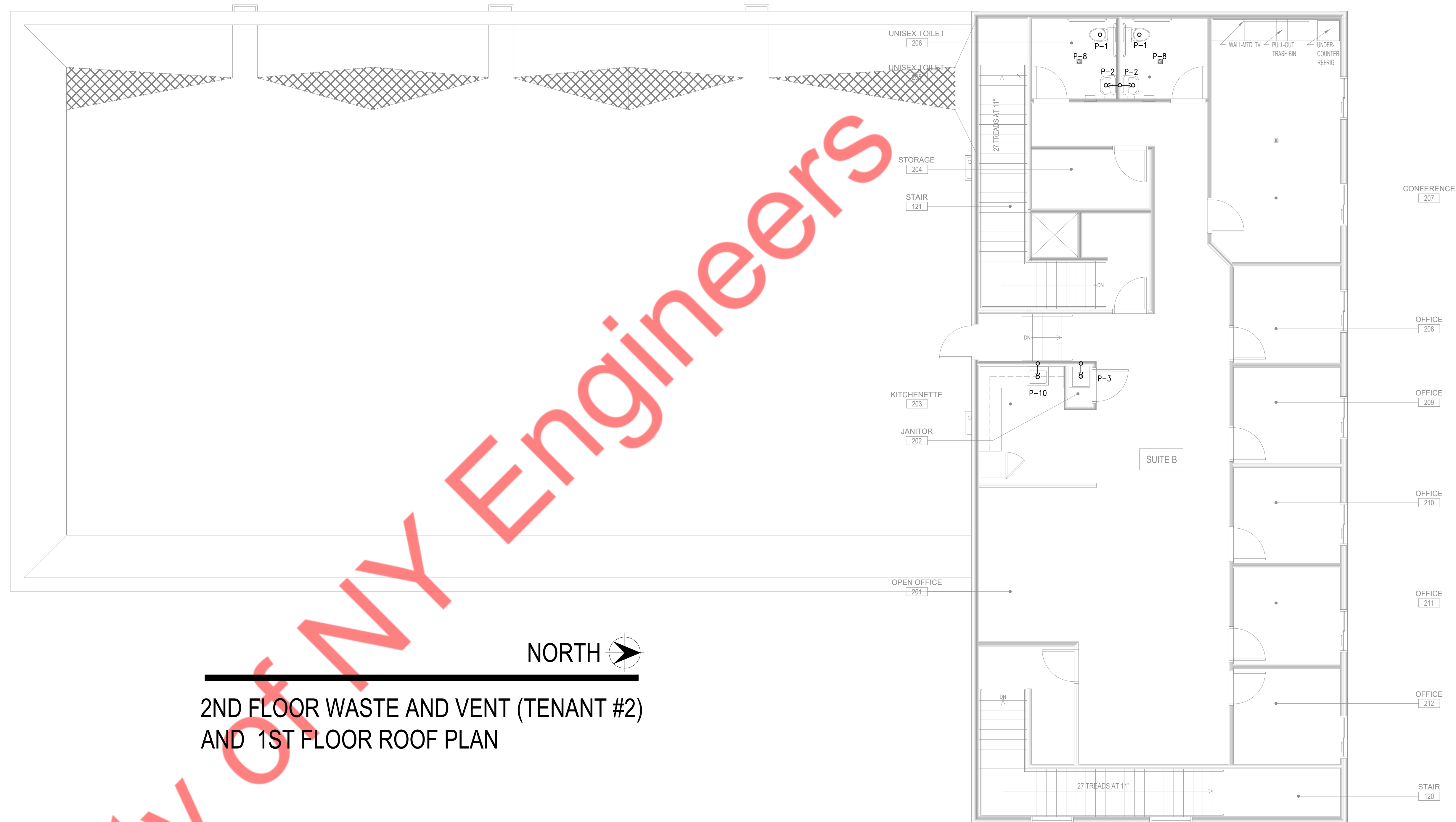
NOTE: ALL FIXTURE MAY BE SUBSTITUTED WITH APPROVED EQUAL. CONTACT OWNER FOR APPROVAL

WASTE AND VENT PIPING PLAN NOTES:

- CONNECT NEW 4" SANITARY WASTE PIPING TO EXISTING SANITARY WASTE LINE OF ADEQUATE SIZE. CONTRACTOR TO FIELD VERIFY SIZE, ROUTING AND INVERT ON SITE.
- PROVIDE 4" VENT THROUGH ROOF, MAINTAIN MIN. 10'-0" FROM ANY OUTDOOR AIR INTAKES.



WASTE AND VENT RISER DIAGRAM



2ND FLOOR WASTE AND VENT (TENANT #2)  
AND 1ST FLOOR ROOF PLAN

WASTE AND VENT PIPING PLAN NOTES:

- ① CONNECT NEW 4" SANITARY WASTE PIPING TO EXISTING SANITARY WASTE LINE OF ADEQUATE SIZE. CONTRACTOR TO FIELD VERIFY SIZE, ROUTING AND INVERT ON SITE.
- ② PROVIDE 4" VENT THROUGH ROOF, MAINTAIN MIN. 10'-0" FROM ANY OUTDOOR AIR INTAKES.