

DULLES OVERLOOK DRIVE

BROAD OVERLOOK DR

NEW PAD MOUNTED
150 KVA
TRANSFORMER

DUNKIN'

WP
A:16

DETECTOR
LOOP

DETECTOR
LOOP

DETECTOR
LOOP

C:14

F.H.

DRIVE
THRU

MOBILE
ORDER

ELECTRICAL PLAN NOTES

1. WEATHER PROOF JUNCTION BOX FOR EXTERIOR SIGNAGES. SEE ARCHITECTURAL ELEVATIONS FOR SIGN LOCATIONS. VERIFY JUNCTION BOX LOCATION WITH SIGN VENDOR PRIOR TO ROUGH-IN. CONTROL OF EXTERIOR SIGNAGES VIA PHOTOCELL.
2. PROVIDE (3) 1" ELECTRICAL CONDUITS TO SPEAKER POST, 1 FOR ELECTRICAL CONNECTION, 1 FOR DATA, 1 NUMBER SPARE. REFER SHEET AS-I FOR EXACT DETAILS ON CONDUITS TO BE PROVIDED PRIOR TO ROUGH-IN.
3. POWER CONNECTION TO DRIVE-THRU CANOPY LIGHTS. COORDINATE WITH CANOPY VENDOR FOR REQUIREMENTS. COORDINATE WITH GC FOR EXACT LOCATION.
4. PROVIDE (3) 1" ELECTRICAL CONDUITS TO MENU BOARD, 1 FOR ELECTRICAL CONNECTION, 1 FOR VOICE & 1 NUMBER SPARE. ALL CONDUITS SHALL BE ROUTED BACK TO MANAGER'S OFFICE. REFER SHEET AS-I FOR EXACT DETAILS ON CONDUITS TO BE PROVIDED PRIOR TO ROUGH-IN.
5. ADDITIONAL 1/2" ELECTRICAL CONDUIT TO EXTEND UP TO SPEAKER POST. REFER SHEET AS-I FOR EXACT DETAILS ON CONDUITS TO BE PROVIDED PRIOR TO ROUGH-IN.
6. 1" CONDUIT WITH PULL STRING TO RIS SYSTEM. ARCHITECTURAL SITE SHEETS FOR ADDITIONAL INFORMATION. SEE GENERAL NOTE 7.
7. 1" CONDUIT WITH PULL STRING FOR CONNECTION OF GROUND LOOP. STUB CONDUIT UP INTO MENU BOARD/SPEAKER POST. SEE GENERAL NOTE 1.
8. CONDUITS WITH PULL STRINGS STUBBED INTO STUD CAVITY FOR MENU BOARD, SPEAKER POST AND GROUND LOOP. E.C. TO DETERMINE LOCATION IN FIELD.
9. ALL EXTERIOR/SITE LIGHTS AND SIGNS SHALL BE CONTROLLED WITH EXTERIOR MOUNTED PHOTOCELL. PHOTOCELL SHALL NOT BE MOUNTED 10' ABOVE GROUND. E.C. TO VERIFY LOCATION IN FIELD PRIOR TO ROUGH-IN.

GENERAL NOTES

1. CONDUIT FOR PLAN NOTE 7 IS FOR THE GROUND LOOP AT THE SPEAKER TO START THE TRIGGERING OF THE TIMER SYSTEM AND ALERTING EMPLOYEE THAT A CUSTOMER IS AT THE SPEAKER POST.
2. CONDUIT FOR PLAN NOTE 2 IS FOR RUNNING THE LINES BACK TO THE BUILDING FOR POWER AND DATA FOR THE SPEAKER POST.
3. CONDUIT FOR PLAN NOTE 4 IS FOR RUNNING THE LINES BACK TO THE BUILDING FOR POWER AND DATA TO THE MENU BOARD.
4. ALL ITEMS ABOVE IN GENERAL NOTES 1-3 AND 7 ARE STANDARD REQUIREMENTS CONDUITS FOR DUNKIN'S THRU SETUP.
5. SALVAGE ELECTRICAL CONNECTION SHALL BE REUSED.
6. CONFIRM CONDUIT SIZE AND QUANTITY WITH OWNER AND VENDOR PRIOR TO PLACEMENT.
7. CONDUIT FOR PLAN NOTE 6 IS FOR THE GROUND LOOP AND TIES INTO A TIMER SYSTEM THAT DUNKIN USES.

D1

ELECTRICAL SITE PLAN

SCALE: 1/16" = 1'-0"

LIGHTING SCHEDULE

CODE	DESCRIPTION	MANUFACTURER	PRODUCT	REMARK
INTERIOR				
A	WALL-WASH FIXTURE TO BE USED AT ACCENT WALL	CONTECH	RL20SA3-35K-12-D/CTR2002CLR-P (NOTE 7)	
B	PROVIDED BY WALK-IN BOX MANUF.	VARIES		
C	TRACK LIGHT & HEAD IN 2', 4' & 8' LENGTHS	JUNO	R600L-35K-BL	MOUNTING HEIGHT @ 10'-0" A.F.F
P1	8' SUSPENDED LINEAR LIGHT FIXTURE	TFC	SES-FR-96L-S62W6200L-DMV-35K-BK (NOTE 7)	MOUNTING HEIGHT @ 10'-0" A.F.F
P2	4' SUSPENDED LINEAR LIGHT FIXTURE	TFC	SES-FR-48L-S62W3100L-DMV-35K-BK (NOTE 7)	
P3	PENDANT CHANDELIER	TECH LIGHTING	700TD-ALVPMC-OS-LED90	
R1	6" RECESSED LED DOWNLIGHT	CREE	RC6/CR6T-1600L-35K	
R2	2X2 LAY-IN TROFFER LED LIGHT FIXTURE	CREE	CR22-32L-35K-S-HD	
R2A	2X4 LAY-IN TROFFER LED LIGHT FIXTURE	CREE	CR24-40L-35K-S-HD	
R3	4" LED ADJUSTABLE DOWNLIGHT, 400K, 200 LUMEN	NORA	NCH-436-L20-40-D-SF	
R4 - 4'-0"	ORANGE LINEAR LED SUSPENDED/SURFACE FIXTURE	PINNACLE ARCHITECTURAL LIGHTING	EX33A-35H0-4'-AC48JB-120-1C-CC-PMS165	MOUNTING HEIGHT @ 8'-7" A.F.F
R4 - 8'-0"	ORANGE LINEAR LED SUSPENDED/SURFACE FIXTURE	PINNACLE ARCHITECTURAL LIGHTING	EX33A-35H0-8'-AC48JB-120-1C-CC-PMS165	MOUNTING HEIGHT @ 8'-7" A.F.F
R4 - 4'-0" PINK	PINK LINEAR LED SUSPENDED/ SURFACE FIXTURE	PINNACLE	EX3D-35VH0-4'-AC48JB-120-1C-CC	MOUNTING HEIGHT @ 8'-7" A.F.F
R4 - 8'-0" PINK	PINK LINEAR LED SUSPENDED/SURFACE FIXTURE	PINNACLE	EX33A-35H0-8'-AC48JB-120-1C-CC	MOUNTING HEIGHT @ 8'-7" A.F.F
R5	2X4 LAY-IN LED LIGHT FIXTURE	LSI	SFP24-LED-50-UE-DIM-35-U	
R6	2X2 LAY-IN LED LIGHT FIXTURE	LSI	SFP22-LED-UE-30-DIM-35-U	
R7	2X4 LAY-IN TROFFER LED LIGHT FIXTURE - REMODEL ONLY	LSI	ELFP24 2X4	
OC	WALL MOUNTED OCCUPANCY SENSOR- WHITE	WATT STOPPER	WS-250-W	
EBU-B	2-HEAD EMERGENCY BATTERY PACK (BLACK) - WT-02 WALL ONLY	EXITRONIX	EBU-BL-LED-51-52	
EBU-W	2-HEAD EMERGENCY BATTERY PACK (WHITE)	EXITRONIX	EBU-W-LED-51-52	
EX-1	COMBO LED EXIT SIGN W/LIGHT HEADS (WHITE)	EXITRONIX	VLED-U-WH-EL90	
EXTERIOR				
LED-2	EXTERIOR RECESSED DOWNLIGHT	DMF LTG.	DRDH-R-4/DRD2M-10-9-40/DRD2T-R-4-S-W	
LED-2A	3" EXTERIOR RECESSED DOWNLIGHT (NOTE 8)	ETI SOLID STATE LIGHTING	MODEL# 53809111 / PART # DL-3-47-906-SV-D	
LED-7	LED EXTERIOR STRIP LIGHT	SLOAN	701912 C175 (48" LONG)	
LED-12	LED UP LIGHT FIXTURE	SOLUTIONS OF LIGHTING	SSL-LSSL-5165-400 LUMENS	
LED-13	LED UP/DOWN LIGHT FIXTURE - PREFAB ORANGE BEAM		ORDERED THRU SPECIALTY LIGHTING GROUP (NOTE 10)	
LED-14	LED UP LIGHT FIXTURE - TOP OF LOWER CHARCOAL TOWER BAND	ATTAINLED	AT-LWW-20-XX-35	
G	WALL PACK - REAR DOOR	COOPER	XTORIA	
EWS-1	WALL PACK (GRAY) EXTERIOR - USED ON DARK WALL FINISH	WAC	WP-LED227-30-AGH	
EWS-2	WALL PACK (WHITE) EXTERIOR - USED ON LIGHT WALL FINISH	WAC	WP-LED227-30-AWH	
WSCX-2	EXTERIOR SIGN LIGHT FIXTURE	HI-LITE MFG. INC.	H-HDMR16/18-1-119/ MR16AD1C293010T-10-S1	
EMR	REMOTE EMERGENCY EGRESS LIGHT (GRAY)	EXITRONIX	LED51	
PKL3	PARKING LOT LIGHTING	COOPER LIGHTING	LUMARK PRV-PREVAL PRV-A40-UNV-T3-SA-BZ	
PKL4	PARKING LOT LIGHTING	COOPER LIGHTING	LUMARK PRV-PREVAL PRV-A40-UNV-T4-SA-BZ	

LIGHTING SCHEDULE NOTES

1. PROVIDE ALL FIXTURES COMPLETE WITH LAMPS. REFER TO NATIONAL ACCOUNT SOURCE INFO FOR LAMP SPECS & VILLA LIGHTING RE-LAMPING PROGRAM.
2. ALL BALLASTS SHALL BE HIGH POWER FACTOR.
3. PROVIDE HOLD-DOWN CLIPS FOR EACH CORNER OF LED GRID TROFFERS.
4. COORDINATE AND VERIFY ALL FIXTURE INFORMATION, TYPE AND FINAL LOCATIONS WITH THE REFLECTED CEILING PLAN.
5. LAMPS SHALL BE AS MANUFACTURED BY SYLVANIA, WESTINGHOUSE, GENERAL ELECTRIC OR APPROVED EQUAL.
6. PROVIDE ALL REQUIRED MOUNTING OR HANGING HARDWARE.
7. ALL SUSPENDED FIXTURES AND SURFACE OR RECESSED FIXTURES IN SOFFITS/CEILINGS PAINTED PT-02 (C) SHALL HAVE BLACK TRIM IN LIEU OF WHITE.
8. PROVIDED BY UNI-STRUCTURE WITH ACCENT BAND.
9. PROVIDE R4-CORNERS AND R4-DEAD ENDS AS REQUIRED BY R4 FIXTURE LAYOUT ON PLANS.
10. TAPE LIGHTS CAN BE PURCHASED FROM SPECIALTY LIGHTING GROUP. CONTACT ANUSH KAZARIAN AT 508-922-0786 OR ANUSH.KAZARIAN@SSLIGHTING.COM

FLOOR PLAN - LIGHTING KEYED WORK NOTES

1. DIMMER SWITCH BANK COORDINATE EXACT LOCATION WITH ARCHITECT/OWNER. DIMMER SWITCHES SHALL BE RATED FOR TOTAL LOAD OF SWITCHED CIRCUIT AND LAMP TYPE AS REQUIRED. DIMMERS SHALL BE PROVIDED WITH AN ON/OFF SWITCH. SEE DETAIL ON THIS SHEET.
2. WALL MOUNTED OCCUPANCY SENSOR EQUAL TO WATTSTOPPER WS-250.SET OFF TIME TO 15 MINUTES FOR RESTROOM,OFFICE APPLICATIONS. SET DIP SWITCH TO AUTOMATIC ON.
3. WIRE ALL EMERGENCY EXIT AND NIGHT LIGHT AHEAD OF SWITCHING FOR CONTINUOUS OPERATIONS. CONNECT TO ADJACENT LIGHTING CIRCUIT.
4. LOW VOLTAGE OCCUPANCY SENSOR EQUAL TO WATTSTOPPER DT-305. PROVIDE LOW VOLTAGE OCCUPANCY SENSOR EQUAL TO WATTSTOPPER DT-305. PROVIDE WATTSTOPPER BZ POWER PACK(S) AS REQUIRED. INTERCONNECT OCCUPANCY SENSORS SO THAT ANY SENSOR WILL TRIGGER ALL LIGHTS. SET OFF TIME FOR 20 MINUTES.
5. HOOD LIGHTS PROVIDED BY HOOD MANUFACTURER. PROVIDE SAME CIRCUIT AS USED FOR ADJACENT LIGHTING.
6. LIGHTING FIXTURES FURNISHED BY WALK-IN BOX VENDOR. ELECTRICAL CONTRACTOR TO INSTALL AND CONNECT FIXTURES.
7. LINE VOLTAGE LOW TEMP WALK-IN OCC SENSOR EQUAL TO WATTSTOPPER CB-100. LINE VOLTAGE LOW TEMP WALK-IN OCC SENSOR EQUAL TO WATTSTOPPER CB-100. PROVIDE UNSWITCHED POWER TO SENSOR.
8. TERMINATE SPEAKER WIRE AT OFFICE VOLUME CONTROLS.

LIGHTING PLAN GENERAL NOTES

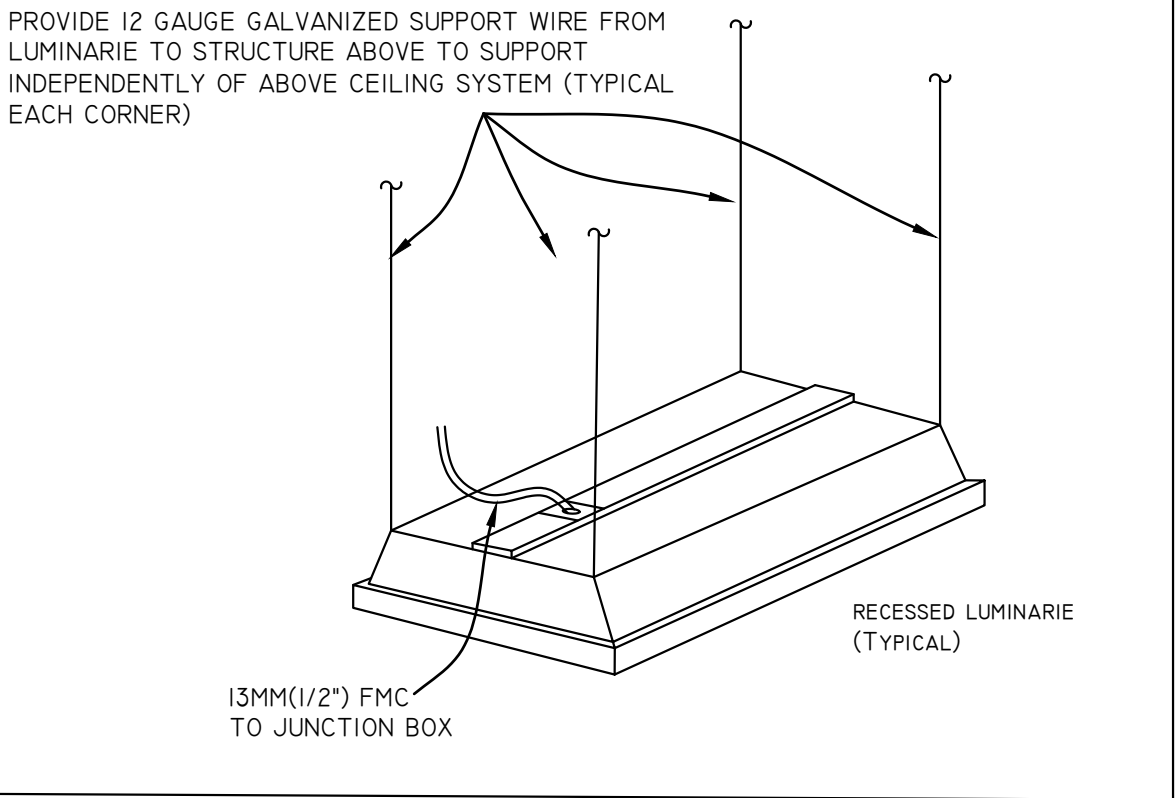
- A. REFER SHEET A-3 FOR LIGHT FIXTURE SCHEDULE, MOUNTING AND FIXTURE LOCATION.
- B. CONTRACTOR IS ADVISED THAT ADJUSTMENTS TO EMERGENCY AND EXIT LIGHT FIXTURE LOCATIONS/QUANTITIES MAY BE REQUIRED BY AHJ UPON FINAL INSPECTION.
- C. ALL NIGHT LIGHT, EMERGENCY AND EXIT LIGHT FIXTURES SHALL BE CONNECTED AHEAD OF SWITCHED LIGHTING CIRCUIT.

INDICATES PANEL NAME INDICATES CIRCUIT NO.

B:A

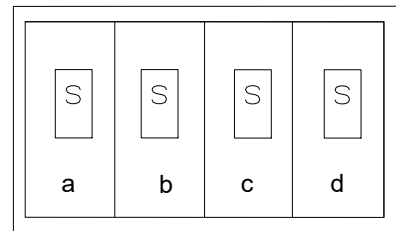
LIGHTING PLAN

SCALE: 1/4" = 1'-0"



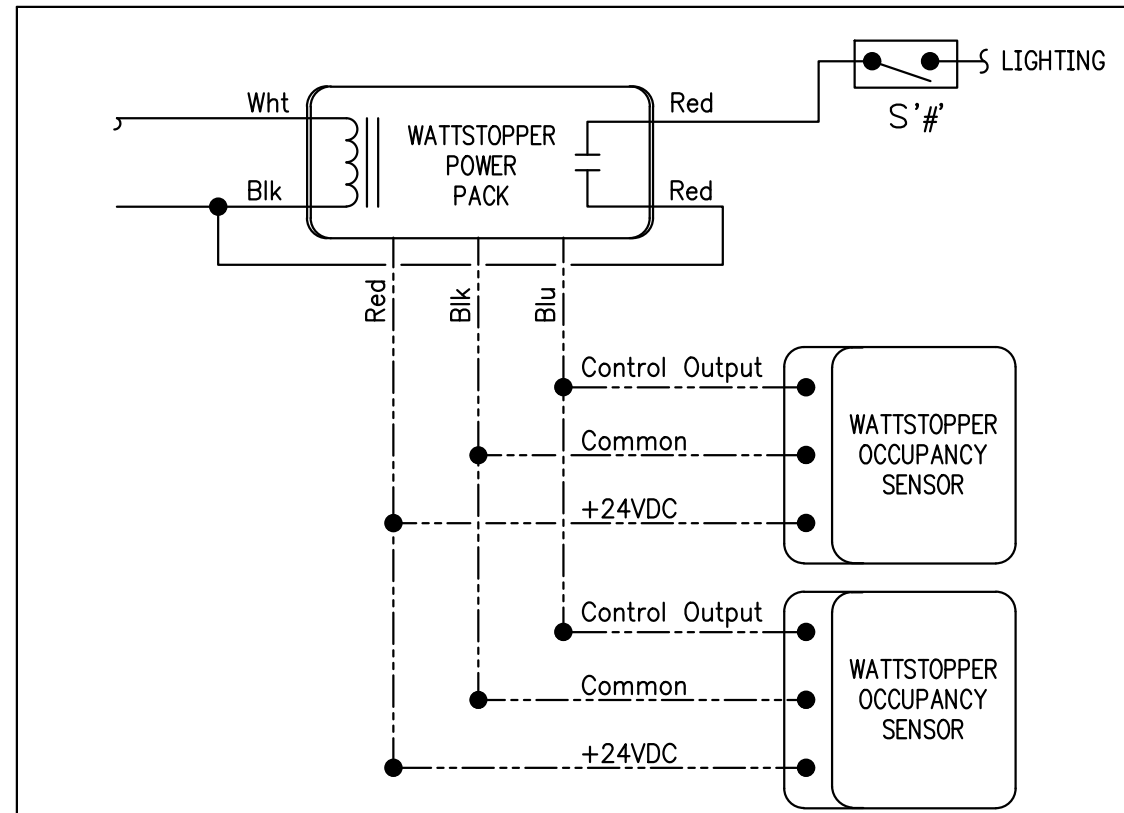
LUMINAIRE SUPPORT DETIAL

N.T.S.



SWITCHBANK DETAIL

N.T.S.

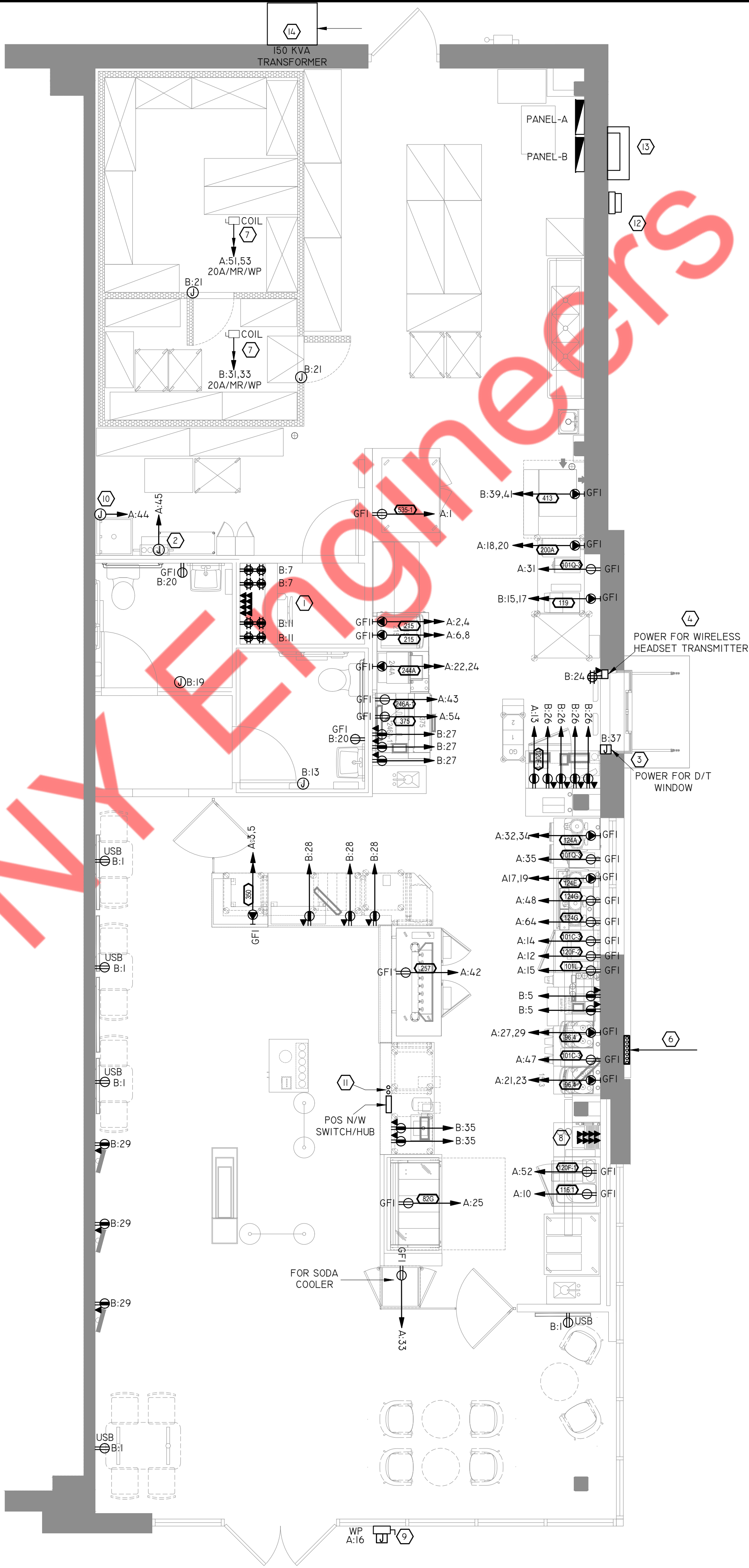



OCCUPANCY SENSOR DETAIL

N.T.S.

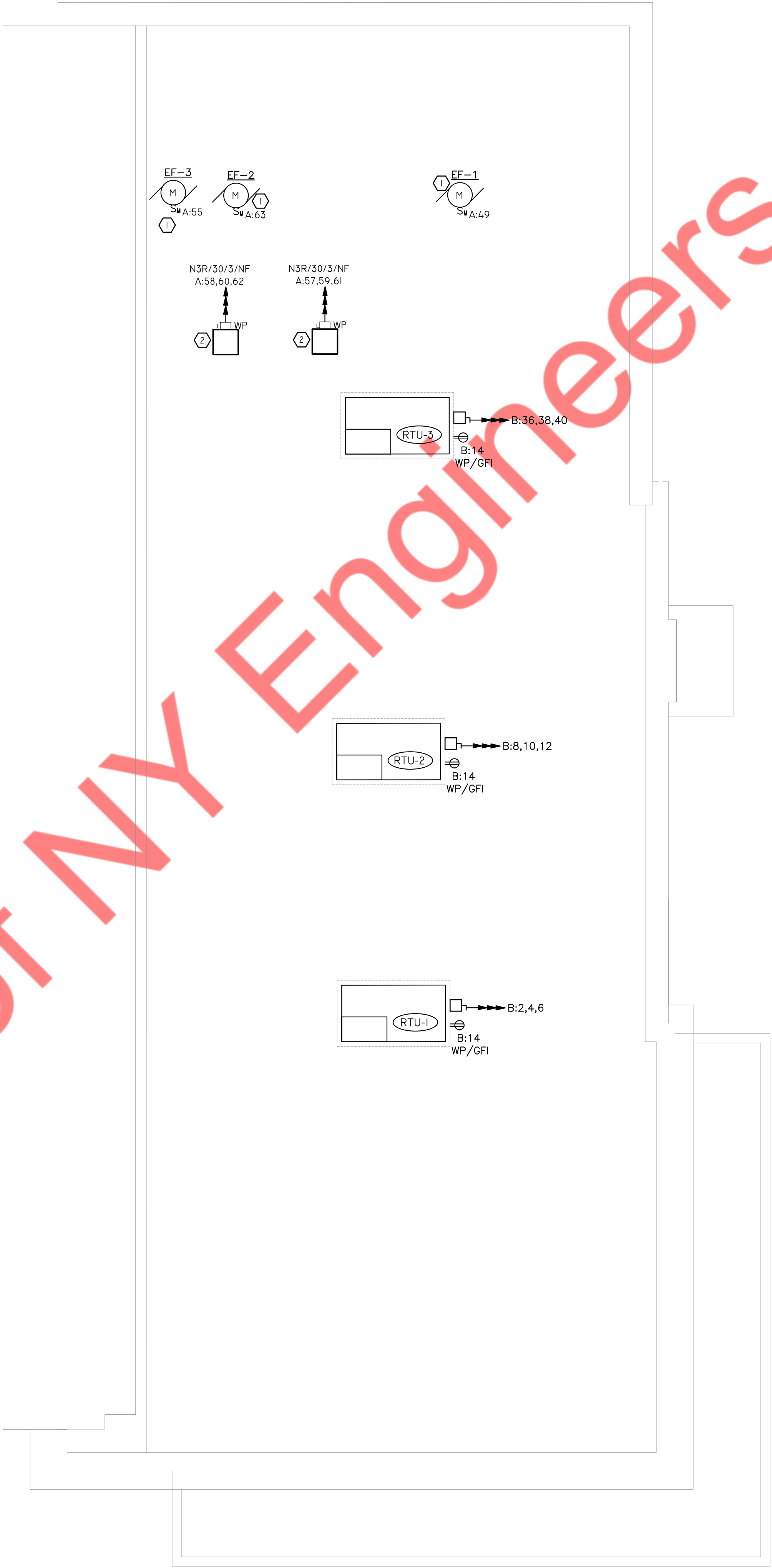
POWER PLAN GENERAL NOTES
1. ALL 120V, 15A AND 20A RECEPTACLES IN KITCHEN AREA SHALL BE "GFCI" IN ACCORDANCE WITH NEC ARTICLE 210.8(B). PROVIDE GFI RATED BREAKER AT PANEL FOR KITCHEN EQUIPMENT.
2. SEE ARCHITECTURAL ELEVATIONS FOR PLACEMENT OF DEVICES.
3. SEE SHEET E-3 FOR POINT OF SALES POWER AND DATA WIRING.
4. COORDINATE FINAL PLACEMENT OF ALL DEVICES WITH FRANCHISEE.
5. COORDINATE EXACT LOCATION OF HVAC EQUIPMENTS WITH MECHANICAL CONTRACTOR.

FLOOR PLAN - POWER KEYED WORK NOTES
1. COORDINATE FINAL PLACEMENT OF ALL DEVICES WITH FRANCHISEE.
2. CONNECT BOOSTER PUMP: PROVIDE GFI RECEPTACLE OR HARDWIRED CONNECTION, AS REQUIRED. IF HARDWIRED, INSTALL 20A, 1-POLE SNAP SWITCH FOR DISCONNECTING MEANS.
3. WIRE A/C POWER TO JUNCTION BOX LOCATED WITHIN PRE-INSTALLED DRIVE THRU WINDOW.
4. WIRE PRE-INSTALLED DRIVE-THRU RECEPTACLE FOR WIRELESS HEADSET TRANSMITTER AFTER WINDOW INSTALLATION. SEE ARCHITECTURAL PLANS FOR DETAILS.
5. ELECTRICAL CONTRACTOR SHALL COORDINATE WITH ARCHITECT/MANUFACTURER FOR EXACT MOUNTING OF THE OUTLET AND POWER FEED PRIOR TO ROUGH-IN.
6. LANDLORD PROVIDED AND INSTALLED CONDUITS WITH PULL STRINGS STUBBED INTO STUD CAVITY FOR MENU BOARD, SPEAKER POST AND GROUND LOOP. E.C. TO DETERMINE LOCATION IN FIELD.
7. E.C. TO COORDINATE EXACT POWER REQUIREMENT FOR WALK-IN BOXES WITH THE MANUFACTURER AND PROVIDE BREAKER AND BRANCH CIRCUITS ACCORDINGLY.
8. DATA POINTS FOR DIGITAL MENU BOARD. COORDINATE EXACT LOCATION WITH MANUFACTURER/ARCHITECT.
9. JUNCTION BOX WITH TOGGLE DISCONNECT PER NEC FOR CONNECTION TO BUILDING MOUNTED SIGNAGE. VERIFY EXACT LOCATION AND CONNECT TO SIGN PER MANUFACTURE'S INSTRUCTION. ROUTE CIRCUIT TO PANEL VIA EXTERIOR LIGHTING/SIGNAGE .
10. JUNCTION BOX FOR WATER HEATER. E.C SHALL COORDINATE EXACT LOCATION WITH EQUIPMENT MANUFACTURER.
11. ELECTRIC & DATA STUB-UP FROM SLAB BELOW INTO MILLWORK CHASE WALL. PROVIDE CONDUIT & PULL STRING FOR NETWORK WIRING. THE CONTRACTOR SHALL BE RESPONSIBLE FOR ACTUAL ROUTING OF CONDUITS. NETWORK CONDUITS SHALL RUN BELOW SLAB TO OFFICE & TURN UP INTO OFFICE WALL. SEE OFFICE R/F ELEVATION FOR HEIGHTS.
12. EXISTING 200A, 480V 3 PH CT METER. E.C. TO VERIFY LOCATION AND RATING OF THE METER IN FIELD. INFORM ENGINEER FOR ANY DISCREPANCY BEFORE COMMENCING ANY WORK.
13. PROPOSED LOCATION FOR 250AF/400AS, 480V 3 PH DISCONNECT SWITCH. E.C. TO COORDINATE AND VERIFY LOCATION OF THE NEW DISCONNECT SWITCH WITH UTILITY/ OWNER.
14. WEATHER PROOF 150 KVA 3 PHASE TRANSFORMER LOCATED OUTDOOR. COORDINATE EXACT LOCATION WITH OWNER.



	ROOF PLAN - POWER KEYED WORK NOTES
<div><div>1.</div><div>EXHAUST FANS FURNISHED AND INSTALLED BY MECHANICAL CONTRACTOR. E.C. SHALL COORDINATE FOR SWITCHING AND CONTROLS AND PROVIDE ALL NECESSARY WIRING REQUIRED.</div></div> <div><div>2.</div><div>E.C. TO COORDINATE EXACT POWER REQUIREMENT FOR WALK-IN BOXES WITH THE MANUFACTURER AND PROVIDE BREAKER AND BRANCH CIRCUITS ACCORDINGLY.</div></div>	

GENERAL NOTES	
<div><div>1.</div><div>COORDINATE EXACT LOCATION OF HVAC EQUIPMENTS ON ROOF WITH MECHANICAL CONTRACTOR.</div></div> <div><div>2.</div><div>ELECTRICAL CONTRACTOR SHALL COORDINATE DISCONNECT AND FUSE REQUIREMENT FOR MECHANICAL UNIT WITH MECHANICAL CONTRACTOR AND EQUIPMENT MANUFACTURER PRIOR TO ROUGH-IN AND PROVIDE AS REQUIRED. COORDINATE LOCATION OF DISCONNECT WITH MANUFACTURER AND MECHANICAL CONTRACTOR PRIOR TO ROUGH-IN. LOCATE AS REQUIRED TO MAINTAIN NEC CLEARANCES.</div></div>	



POS-COMMUNICATIONS EQUIPMENT SCHEDULE

#	QTY	DESCRIPTION	LOCATION
POS EQUIPMENT			
1	3	POINT OF SALES TERMINAL (POS)	(1) FRONT COUNTERS (1) D/T POS (1) D/T OT
1A	3	KIOSK	CUSTOMER AREA
2	2	RECEIPT PRINTER	(1) FRONT COUNTERS (1) D/T POS
3	3	PREP PRINTER	(1) SANDWICH (1) OTG (0) BAKERY CASE (1) BEVERAGE STATION
4	5	VDU	(1) BEVERAGE STATION (1) SANDWICH STATION (1) EXPEDITER @ D/T (1) D/T CAMERA MONITOR
5	4	VDU CONTROLLER (PC BASED)	(1) EXPEDITER @ HAND OFF
6	1	POS NETWORK HUB/ SWITCH	POS COFFEE FRONT CHASE
7	1	PC SITE CONTROLLER EXTERNAL	OFFICE
7a	-	PC SITE CONTROLLER INTERNAL	OFFICE
8	1	PRINTER/FAX/COPIER (BOH)	OFFICE
9	2	SCANNER	(1) FRONT COUNTERS (1) D/T POS
10	2	PRICE CONFIRMATION DISPLAY	MOUNT OUTSIDE @ D/T WINDOW & BEHIND FRONT POS UNITS
11	-	NOT USED	
12	2	CASH DRAWER	UNDER CTR @ FRONT & ABV CTR @ D/T
13	1	COIN DISPENSER	(1) D/T COUNTER
14	2	PAYMENT TERMINAL	(1) FRONT COUNTER (1) D/T POS
14a	-	VERIFONE SWITCH	(1) FRONT COUNTER (1) D/T POS
30	-	ORDER STATUS BOARD	(0) FRONT COUNTER (OPTIONAL)
OTHER COMMUNICATION DEVICES			
15	-	DRIVE THROUGH (DT) TIMER CONSOLE	OFFICE
16	-	DT TIMER VDU DISPLAY	NEAR DT, VISIBLE TO ENTIRE SERVICE AREA
PHONE & DATA LINES			
18	-	SPARE	OFFICE
19A	-	SPARE	OFFICE
20	1	FAX LINE	OFFICE
21	1	PHONE LINE	OFFICE
22	-	NOT USED	
23	1	HIGH SPEED INTERNET LINE (MNS)	OFFICE
24	1	SYSTEM SECURITY DVR	SECURITY SYSTEM
25	8	DIGITAL MENU BOARD	OFFICE/SERVICE AREA
26	1	WIFI	OFFICE
26a	-	SECONDARY WIFI ACCESS POINT (OPT)	OFFICE
27	-	OTT VOIP (PHONE)	OFFICE

CONDUIT NOTES:

- DMB: PROVIDE (8) CAT 5 WIRE PULLS FROM (2) QUAD DATA OUTLETS IN MENU BOARD SOFFIT TO (2) QUAD DATA OUTLETS IN OFFICE WALL
- 2 CONDUITS MIN SHALL BE USED BETWEEN OFFICE & OTHER PARTS OF THE STORE
 - I CONDUIT FOR POS WIRING ONLY
 - I CONDUIT FOR NON-POS ITEMS

FLOOR PLAN - POS KEYED WORK NOTES

- LANDLORD PROVIDED AND INSTALLED CONDUITS WITH PULL STRINGS STUBBED INTO STUD CAVITY FOR MENUBOARD, SPEAKER POST AND GROUND LOOP. COORDINATE EXACT LOCATION IN FIELD..
- 1" C TO GROUND LOOP AT DRIVE THRU. CONNECT BACK TO RIS SYSTEM. SEE SHEET ES-1.
- DRIVE-THRU STACKING CAMERA. G.C. TO PROVIDE CONDUIT CHASE THROUGH INACCESSIBLE SPACE. COORDINATE SIZE AND ROUTING REQUIREMENTS WITH VENDOR.
- ROUTE 2" C WITH PULL STRING TO MAIN TELEPHONE SERVICE. SEE SHEET ES-1. SEE HIGH SPEED SYSTEM NOTES THIS SHEET.
- (3) 1" C TO MENU BOARD/SPEAKER POST. SEE SHEET ES-1.
- COORDINATE FINAL PLACEMENT OF ALL DEVICES IN OFFICE WITH FRANCHISEE.
- ELECTRIC & DATA STUB-UP FROM SLAB BELOW INTO MILLWORK CHASE WALL. PROVIDE CONDUIT & PULL STRING FOR NETWORK WIRING. THE CONTRACTOR SHALL BE RESPONSIBLE FOR ACTUAL ROUTING OF CONDUITS. NETWORK CONDUITS SHALL RUN ABOVE CEILING TO OFFICE DESK & TURN DOWN INTO OFFICE WALL. SEE OFFICE ELEVATIONS E-3A FOR HEIGHTS.
- SEE MENU BOARD DATA NOTES.

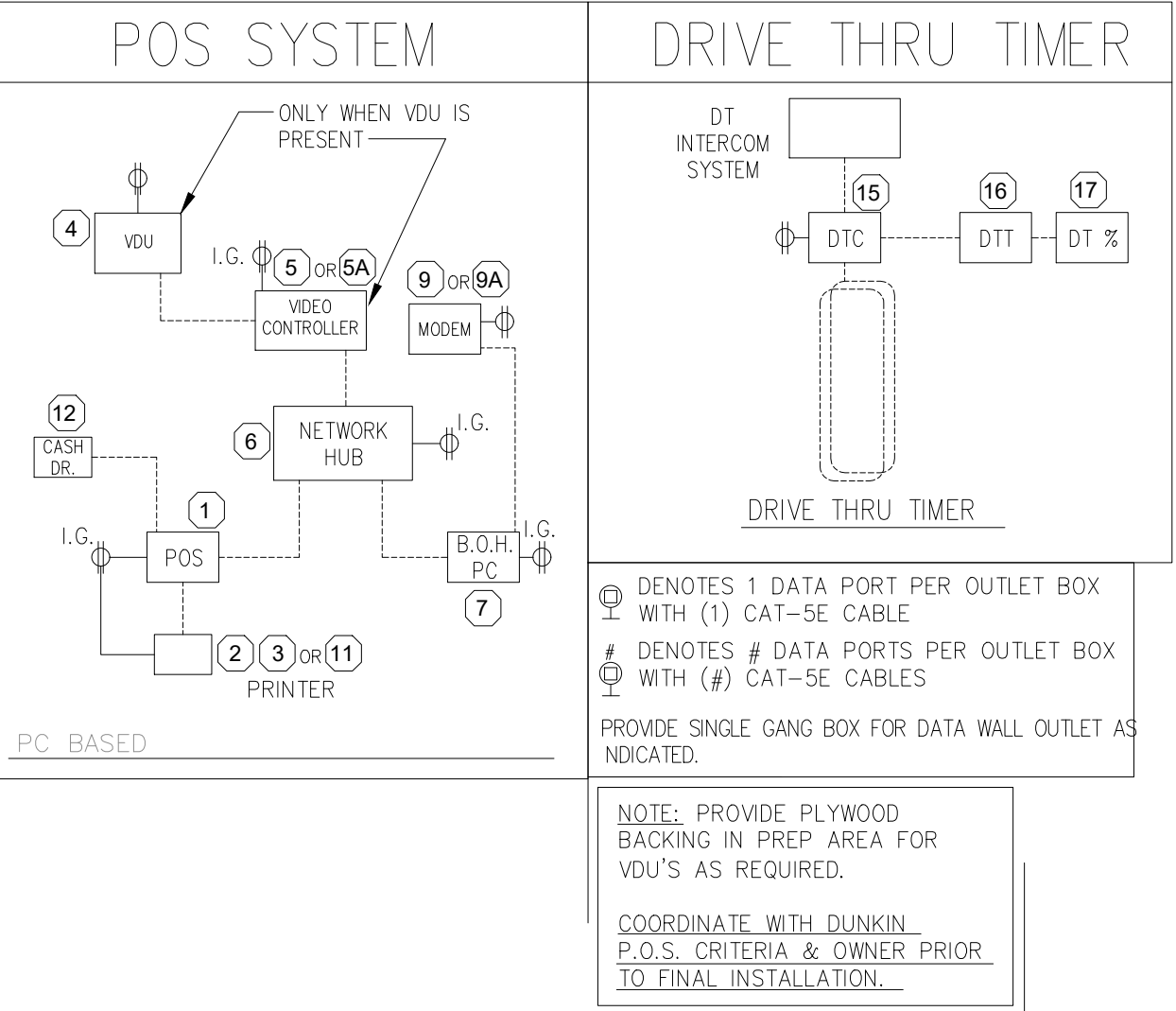
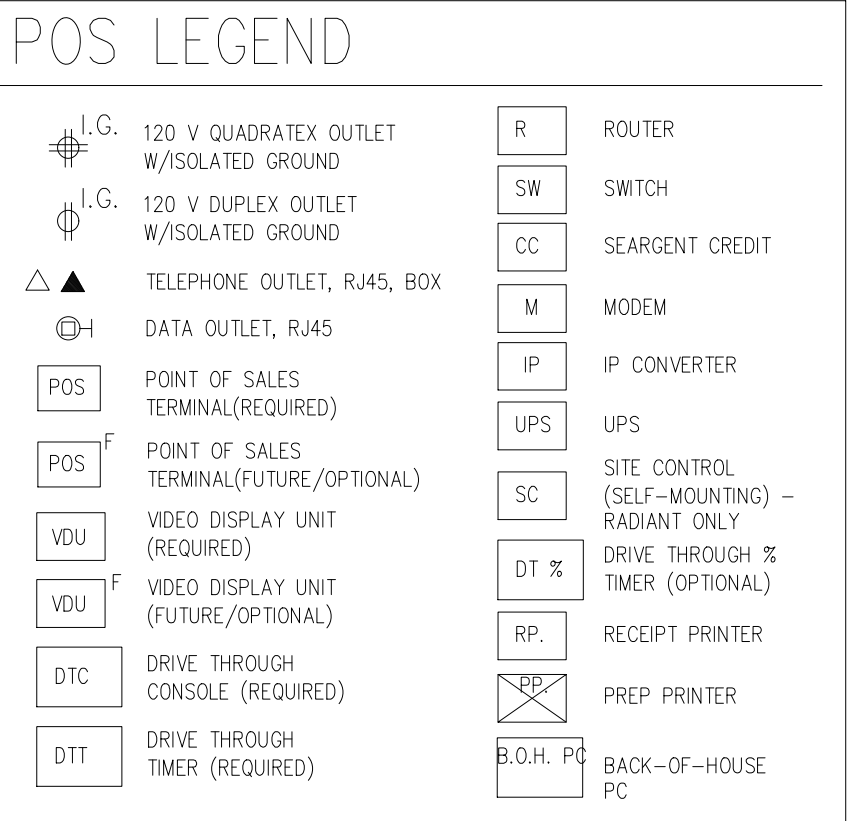
GENERAL POS NOTES:

- A. REFER TO HTTP://EXTRANET.DUNKINBRANDS.COM FOR A LISTING OF APPROVED POS VENDORS BY CONCEPT.
- B. FINAL POS DRAWINGS NEED TO BE PROVIDED TO POS VENDOR THAT IS SELECTED.
- C. POS VENDORS REQUIRE DEDICATED ISOLATED GROUNDED (DIG) OUTLETS ON A 20 AMP CIRCUIT DEDICATED ONLY TO POS EQUIPMENT. 60HZ, 120V+10%. ALL POS TERMINALS AND VIDEO DISPLAY DEVICES REQUIRE A DUPLEX OUTLET. THE BACK OFFICE CONTROLLER REQUIRES A QUAD OUTLET. THE NETWORK SWITCH REQUIRES A DUPLEX. IF FEDERAL, STATE, AND LOCAL WIRING CODES DO NOT MEET THIS REQUIREMENT, CONTACT THE POS VENDOR FOR INFORMATION ON ADDITIONAL EQUIPMENT THAT CAN BE PURCHASED TO MEET THIS REQUIREMENT. IF THIS REQUIREMENT IS NOT MET, THE POS SYSTEM WARRANTY IS INVALID.
- D. ALL POWER INDICATED ON THIS PLAN MUST HAVE A THIRD WIRE. ISOLATED GROUND, AND BE TERMINATED WITHIN (4) FEET OF THE DEVICE.
- E. IG-5362 RECEPTACLES MUST BE USED FOR ALL POS UNITS. VDU UNITS AND SITE CONTROLLER UNIT (IN OFFICE). LABEL RECEPTACLES "POS ONLY".
- F. LOW VOLTAGE WIRE IS REQUIRED TO BE CATEGORY 5 CABLE RUN IN 1/2" CONDUIT FOR POS EQUIPMENT ONLY. AND MUST BE TERMINATED WITH RJ45 JACKS. ALL POS EQUIPMENT LINES TERMINATE AT THE FRONT COUNTER CHASE
- G. A 12" MINIMUM SEPARATION MUST BE MAINTAINED BETWEEN LOW VOLTAGE WIRES AND POWER WIRING (TO AVOID ELECTRICAL INTERFERENCE).
- H. BRAND REQUIREMENTS DICTATE THAT A MINIMUM OF THREE CONDUITS BE USED FOR DATA LINES BETWEEN THE OFFICE AND OTHER PARTS OF THE STORE- ONE CONDUIT IS TO BE DEDICATED TO POS WIRING, ONE FOR DIGITAL MENUBOARD DATA LINES, AND ANOTHER FOR NON-POS ITEMS (I.E. SECURITY CAMERAS, DT TIMERS, HEAD SET WIRING
- I. EXACT # OF RECEPTACLES ON OFFICE MUST BE COORDINATED ON A PROJECT-BY-PROJECT BASIS IN TERMS OF EQUIPMENT LOCATED IN THE OFFICE
- J. ALL CEILING MOUNTED VDUS TO BE SUSPENDED FROM UNISTRUT BY THREADED ROD W/ WHITE PVC SLEEVE. CONNECT UNISTRUT TO ROOF STRUCTURE. VDU BY POS VENDOR; UNISTRUT & THREADED ROD BY G.C. UNISTRUT TO SUPPORT MINIMUM 50 LB. WEIGHT
- K. VDU MOUNTING HEIGHTS (TO BOTTOM OF MONITOR) ARE AS FOLLOWS:
 - a. SANDWICH STATION - 68" A.F.F.
 - b. DRIVE THRU - 61" A.F.F.
- L. DIGITAL MENUBOARD PREP WIRING:
 - a. SEE MENU BOARD DATA NOTES THIS SHEET

MENU BOARD DATA NOTES:

- DATA CONNECTION FOR DIGITAL MENU BOARD. CONFIRM REQUIREMENTS AND LOCATION WITH ARCHITECTURAL DRAWINGS.
 - GC/EC TO PROVIDE (2) 1" PVC CONDUITS FOR DATA LINES- LOW VOLTAGE CAT 5 CABLING TO OFFICE
 - GC/EC TO PROVIDE (1) 1" METAL CONDUITS FOR POWER TO ELECTRICAL PANEL.
 - GC ELECTRICIAN CONTRACTOR (EC) TO COORDINATE WHICH OPTION IS TO BE SELECTED BY FRANCHISEE (FEE) PRIOR TO BIDDING OR PERFORMING WORK. AUTHORITY HAVING JURISDICTION (AHJ) MAY REQUIRE FULL WIRE PREP BY GC/EC. GC TO ALERT CM, FEE, AND DMB INSTALLER (VIA PHONE AND EMAIL) IF GC/EC MUST PERFORM ALL ELECTRICAL INSTALL WORK
- OPTIONS (GC TO COORDINATE WHICH OPTION IS TO BE SELECTED BY FEE PRIOR TO BIDDING OR PERFORMING WORK)
- OPTION # A (SITE PREPARATION VERIFICATION): GC/EC TO PROVIDE ALL CAT 5 CABLING AND FINAL ELECTRICAL CONNECTIONS TO DATA BOXES/PLATES.
 - OPTION # B (FULL SITE PREPARATION) GC/EC TO PROVIDE PULL STRINGS FROM MENU BOARD SOFFIT TO OFFICE AND MENU BOARD SOFFIT TO ELECTRICAL PANEL BOARD. DMB VENDOR TO PROVIDE ALL CAT 5 CABLING AND ELECTRICAL CONNECTIONS TO DATA BOXES/PLATES.

- EQUIPMENT NOTES
- VDU HEIGHT TO BE COORDINATED WITH EQ IPMENT AND SIGNAGE (SEE ELEVATIONS).
 - ONLY REQUIRED EQUIPMENT IS VISUALLY REPRESENTED AND TAGGED IS SHOWN ON THIS FLOOR PLAN. OPTIONAL EQUIPMENT IS TAGGED BUT NOT SHOWN GRAPHICALLY.
- HIGH SPEED SYSTEM NOTES:
- BEFORE A PHONE LINE CAN BE INSTALLED AT THE SITE, THE FOLLOWING ITEMS MUST BE IN PLACE PRIOR TO THE INSTALLATION. THESE ELEMENTS NEED TO BE IN PLACE 6-7 WEEKS BEFORE THE STORE OPENING TO ENSURE HIGH SPEED CONNECTIVITY.
- SINCE, 2" DEDICATED CONDUIT FROM BUILDING TO POLE, W/ PULL STRING.
 - 4' X 4', 3/4" PLYWOOD BACKBOARD MOUNTED ABOVE SPACE WHERE SERVICE COMES IN.
 - FRAMED OFFICE IN A BUILDING THAT HAS A ROOF, CEMENT FLOORS AND EXTERIOR WALLS.
 - GROUND ELECTRICAL - THE FOLLOWING IS A LIST OF ACCEPTABLE GROUNDS IN ORDER OF PREFERENCE:
 - A. BUILDING SERVICE GROUND (MAIN GROUND ELECTRODE SYSTEM)
 - B. MAIN ELECTRIC BOX
 - C. BUILDING STEEL
 - D. WATER PIPE (AN ACCEPTABLE WATER PIPE IS A METAL UNDERGROUND WATER PIPE IN DIRECT CONTACT WITH THE EARTH FOR 10 FEET OR MORE AND ELECTRICALLY CONTINUOUS TO THE POINT WHERE THE PROTECTOR GROUND IS INSTALLED)



H1

POS SYSTEM PLAN

SCALE: 1/4" = 1'-0"