



1 LIGHTING PLAN
SCALE: 1/4" = 1'-0"

GENERAL NOTES

- ALL WORK SHALL COMPLY WITH ALL LOCAL AND STATE CODES AND AUTHORITIES HAVING JURISDICTION.
- THE CONTRACTOR SHALL SECURE AND PAY FOR ALL REQUIRED PERMITS AND ARRANGE ALL REQUIRED INSPECTIONS.
- THE CONTRACTOR SHALL COORDINATE HIS WORK WITH OTHER CONTRACTORS AND TRADES.
- THESE DRAWINGS, AS PREPARED, ARE DIAGRAMMATIC BUT SHALL BE FOLLOWED AS CLOSELY AS CONSTRUCTION OF THE PROJECT AND THE WORK OF THE TRADES WILL PERMIT. EQUIPMENT LOCATIONS INDICATED ARE APPROXIMATE. COORDINATE EXACT LOCATIONS AND REQUIRED CLEARANCES WITH EQUIPMENT SUPPLIER AND ALL TRADES PRIOR TO INSTALLATION.
- THE CONTRACTOR SHALL FURNISH AND INSTALL ALL THE EQUIPMENT INDICATED WITHIN THESE DRAWINGS UNLESS OTHERWISE NOTED. VERIFY LOCATION AND DIMENSIONS IN THE FIELD PRIOR TO FABRICATION AND / OR INSTALLATION.
- ALL ROOF PENETRATIONS SHALL BE AT THE CONTRACTOR'S EXPENSE. COORDINATE WITH OWNER'S ROOFING CONTRACTOR SO AS NOT TO VOID ANY EXISTING ROOF WARRANTIES.
- THE ENTIRE INSTALLATION SHALL BE GUARANTEED FREE OF DEFECTS AND CONTRACTOR SHALL REPAIR AND / OR REPLACE ANY DEFECTIVE MATERIALS OR EQUIPMENT AT NO COST TO THE OWNER FOR A MINIMUM PERIOD OF ONE YEAR FROM THE DATE OF ACCEPTANCE BY ARCHITECT OR ENGINEER.
- ALL WORK SHALL BE SUBJECT TO THE ACCEPTANCE AND APPROVAL OF THE ARCHITECT AND OWNER. THE ARCHITECT SHALL BE NOTIFIED OF ANY AND ALL DISCREPANCIES BETWEEN FIELD CONDITIONS AND THE CONTRACT DOCUMENTS BEFORE PROCEEDING WITH THAT PORTION OF THE WORK. FAILURE OF PROPER NOTIFICATION DOES NOT RELIEVE THE CONTRACTOR. THE CONTRACTOR SHALL CORRECT ANY AND ALL WORK ARISING FROM SUCH FAILURE TO COORDINATE DISCREPANCIES TO THE SATISFACTION OF THE ARCHITECT WITHOUT ADDITIONAL COST TO THE OWNER.
- COORDINATE ALL EQUIPMENT UTILITY INFORMATION SHOWN ON THIS SHEET WITH THE DUNKIN' BRANDS EQUIPMENT SCHEDULE AND EQUIPMENT MANUFACTURER'S CUT SHEETS.
- ALL EXTERIOR LIGHTS TO BE TIMECLOCK CONTROLLED.
- ALL 15 AND 20 AMP, 120 VOLT RECEPTACLES IN KITCHEN AND PREP AREAS SHALL BE GFI TYPE.
- ALL JUNCTION BOXES SHOWN ON THIS PLAN ARE TO BE INSTALLED ABOVE THE FINISHED CEILING.
- ALL EMERGENCY AND EXIT FIXTURES SHALL BE CONNECTED TO LOCAL LIGHTING CIRCUIT AHEAD OF ANY SWITCHING. PROVIDE ADDITIONAL FIXTURES AS NEEDED TO MEET THE CODE REQUIREMENTS PER LOCAL REQUIREMENTS.
- PROVIDE WOOD BLOCKING BEHIND ALL EXTERIOR LIGHTING FIXTURES COORDINATE WITH GENERAL CONTRACTOR.
- THE CONTRACTOR IS RESPONSIBLE FOR REVIEWING THE LATEST KITCHEN PLANS AND EQUIPMENT CUTS SHEETS FOR PROPER EQUIPMENT LOCATIONS AND CONNECTION REQUIREMENTS PRIOR TO STARTING WORK.

CARBON MONOXIDE MONITORING:
THE DESIGN PROFESSIONAL IS RESPONSIBLE FOR PROVIDING A MEANS OF MONITORING AND ALARMING THE OCCUPANTS UPON THE PRESENCE OF CARBON MONOXIDE (CO). THE MEANS OF DETECTION SHALL BE LOCATED NEAR EQUIPMENT THAT PRODUCES PRODUCT OF COMBUSTION. LOCATIONS SHALL INCLUDE BUT NOT BE LIMITED TO: GAS FIRED OVENS, GAS FIRED WATER HEATERS, GAS FIRED FURNACES, ETC.

KEYED NOTES

- INSTALL SWITCH HEIGHT MOUNTED OCCUPANCY SENSOR, HUBBELL MODEL LHRS1, IN THE RESTROOMS AND OFFICE.
- PROVIDE OCCUPANCY SENSOR SWITCHES FOR WALK-IN REFRIGERATOR AND FREEZER. ENSURE SWITCHES ARE SUITABLE FOR TEMPERATURE OF SPACE.
- SPEAKER AND SOUND SYSTEM TO BE PROVIDED AND INSTALLED BY ELECTRICAL CONTRACTOR. LOCATE VOLUME CONTROL IN THE OFFICE. SEE ARCHITECTURAL CEILING PLAN FOR EXACT LOCATION AND CONTROL.
- PROVIDE CONTROL RELAY PANEL AS SPECIFIED BY THE LIGHTING VENDOR. PROVIDE AND INSTALL DIGITAL SWITCH(ES) AS REQUIRED.
- EXHAUST FAN SHALL BE CIRCUITED & CONTROLLED ALONG WITH THE LIGHT FIXTURES IN THE SAME ROOM.
- CONTROL RELAY PANEL. SEE LIGHTING PLAN FOR SCHEDULE AND CONTROL DETAIL DRAWINGS FOR ADDITIONAL INFORMATION

CEILING LEGEND

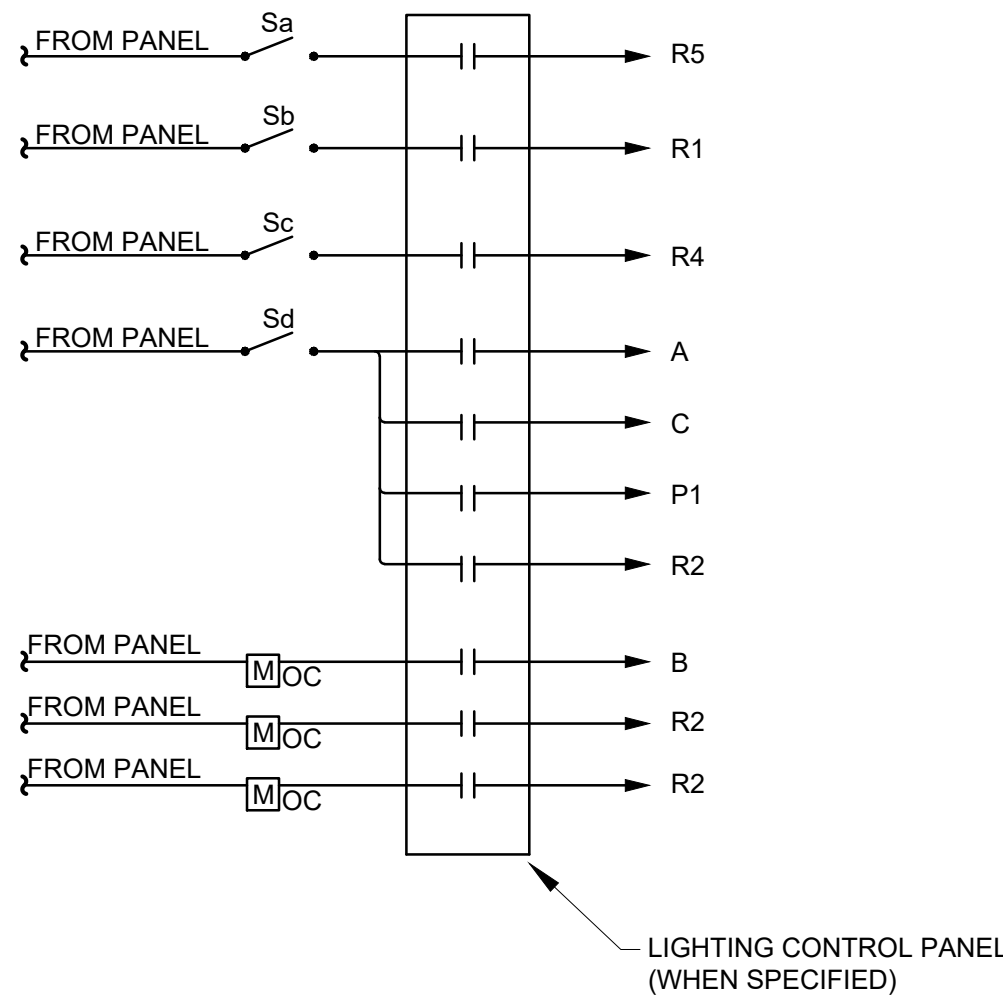
	2x2 LAY-IN LED TROFFER LIGHT FIXTURE		SPEAKER
	2x4 LAY-IN LED LIGHT FIXTURE W/ LENS		GYPSUM BOARD CEILING
	2x2 LAY-IN LED LIGHT FIXTURE W/ LENS		2"X2" CEILING GRID SYSTEM
	2x4 LAY-IN LED TROFFER LIGHT FIXTURE		2"X4" CEILING GRID SYSTEM
	EXTERIOR LED TAPE LIGHT		WALL-MTD OCCUPANCY SENSOR
	EXTERIOR RECESSED LIGHT FIXTURE		RETURN/CEILING EXHAUST REGISTER
	LED RECESSED LIGHT FIXTURE		SUPPLY AIR DIFFUSER - 4 WAY
	TRACK LIGHT		FLUE
	ORANGE LIGHT BAR FIXTURE		ACCESS HATCH
	SUSPENDED LINEAR LED FIXTURE		ORDER STATUS BOARD/ EXPEDITOR VDU
	WALL WASH FIXTURE		
	WALL MTD EMERG LIGHT		
	WALL MTD EMERG LIGHT/ EXIT SIGN COMBO		
	EMERGENCY LIGHT REMOTE HEAD		
	WALL PACK		
	EXTERIOR WALL MOUNT LIGHT		
	WALL PACK #2		

NOTE: SEE ARCHITECTURAL DWG'S FOR MORE INFORMATION ON LIGHT FIXTURES.

CONTROL RELAY PANEL SCHEDULE

DESCRIPTION	FIXTURE TAG	CKT WATTS	CONTROL VIA	CIRCUIT #	RELAY #
2X4 USED IN BACK OF HOUSE AREA	R5	405W	Sa	P:8	1
CAN FIXTURES USED IN SERVICE AREA	R1	294W	Sb	P:6	2
ORANGE FINISHED FIXTURE USED ABOVE FRONTLINE	R4	76W	Sc	P:6	3
FIXTURE USED ABOVE ART WORK	A	69W	Sd	P:6	4
TRACK LIGHT AND HEAD USED	C	69W	Sd	P:6	5
EIGHT FOOT FIXTURES USED IN HIGH CEILING AREAS	P1	680W	Sd	P:6	6
2X2 USED IN RESTROOM	R2	96W	Sd	P:8	7
FIXTURES USED WALK-IN COOLER AND FREEZER AREAS	B	120W	OCC SENSOR	P:8	8
2X2 USED IN RESTROOM	R2	96W	OCC SENSOR	P:8	9
2X2 USED IN OFFICE	R2	48W	OCC SENSOR	P:8	10

WHEN THE LIGHTING CONTROL IS SPECIFIED WITH DIMMING CAPABILITIES, THE SHARING OF NEUTRALS IS STRICTLY PROHIBITED.



MUSIC SYSTEM NOTES

THE MUSIC SYSTEM IS A REQUIREMENT OF THE BRAND AND NO LONGER OPTIONAL. ARCHITECTS TO UPDATE ARCHITECTURAL DRAWINGS PER GUIDELINES DIRECTLY BELOW.

- MUSIC SYSTEM IS REQUIRED IN ALL NEW AND REMODEL STORES. ALL CEILING SPEAKERS TO BE FLUSH MOUNTED @ GYP. BOARD CLG. & ACT CLG. SPEAKERS @ OPEN CEILING TO BE MOUNTED ON LOWER CORD OF ROOF TRUSSES ALL INTERIOR SPEAKERS TO MATCH SURFACE IT IS MOUNTED ON. ALL EXTERIOR SPEAKERS TO BE BLACK, WITH EXTERIOR GRADE CONSTRUCTION.
- MUSIC SYSTEM IS REQUIRED IN ALL NEW AND REMODEL STORES. MUSIC SYSTEM TO USE DBI APPROVED PROGRAMMING
- ALL CEILING SPEAKERS TO BE FLUSH MOUNTED WHITE. ALL EXTERIOR SPEAKERS TO BE BLACK, WITH EXTERIOR GRADE CONSTRUCTION.
- ONE SPEAKER IN EACH BATHROOM TO BE FLUSH MOUNTED WHITE.
- A MINIMUM OF TWO SPEAKERS IN THE SEATING AREA (NO SPEAKERS IN THE SERVICE AREA).
- A MINIMUM OF TWO SPEAKERS AT EXTERIOR SEATING AREAS WHERE APPLICABLE.
- SPEAKER AT EXTERIOR OF BUILDING ADJACENT TO ENTRY.
- PROVIDE AND INSTALL SEPARATE VOLUME CONTROLS FOR EACH AREA (RESTROOMS, SEATING AREA, EXTERIOR)
- HARDWARE TO BE INSTALLED IN THE OFFICE. FIELD VERIFY AND COORDINATE WITH FRANCHISE FOR THE EXACT LOCATION OF THE UNIT AND VOLUME CONTROLS.

POS COMMUNICATION EQUIPMENT SCHEDULE

QTY	DESCRIPTION	LOCATION	LOAD			TRANS FORMER	LOVO TERM	REMARKS
			VOLTS	AMPS	CB			
POS EQUIPMENT								
1	4	POINT OF SALES TERMINAL (POS)	(2) FRONT COUNTER (1) D/T (1) D/T OT	100-120V	2.0	20A/1P	NO	RJ45 SHARES CIRCUIT WITH POS ITEMS 2 & 12
2	3	RECEIPT PRINTER	(2) FRONT COUNTER (1) D/T	100-240V	2.0	20A/1P	YES	RJ45 SHARE CIRCUIT WITH POS ITEMS 1 & 12
3	5	PREP PRINTER	(1) COFF STATION (1) BEVERAGE STATION (2) SANDWICH (1) OTGO PRINTER	24/34V	1.2	20A/1P	YES	RJ45
4	4	VDU	(1) BEVERAGE STA (1) SANDWICH (1) EXPEDITER @ D/T	100-240V	1.5	20A/1P	NO	N/A SHARES CIRCUIT
5	4	VDU CONTROLLER (PC BASED)	(1) EXPEDITER @ HAND OFF	100-120V	1.0	20A/1P	YES	RJ45
6	1	POS NETWORK HUB/ SWITCH	POS COFFEE FRONT CHASE	100-120V	0.5	20A/1P	YES	RJ45 SHARES CIRCUIT WITH POS ITEMS 1, 2 & 12
7	1	PC SITE CONTROLLER EXTERNAL	OFFICE	100-120V	4.0	20A/1P	NO	RJ45
7a	1	PC SITE CONTROLLER INTERNAL	OFFICE	100-120V	4.0	20A/1P	NO	RJ45
8	1	PRINTER/FAX/COPIER (BOH)	OFFICE	100-120V	8.2	20A/1P	NO	N/A
9	3	SCANNER	(2) FRONT COUNTER (1) D/T				NO	RJ45 CONNECTED TO POS UNITS
10	3	PRICE CONFIRMATION DISPLAY	MOUNT OUTSIDE @ D/T WINDOW & BEHIND FRONT POS UNITS				NO	RJ45 CONNECTED TO D/T POS UNIT
11	0	NOT USED						
12	3	CASH DRAWER	UNDER CTR @ FRONT & D/T	N/A	N/A		NO	RJ45 SHARES CIRCUIT WITH POS ITEMS 1 & 2
13	0	NOT USED		N/A	N/A		NO	RJ45
14	3	PAYMENT TERMINAL	(2) FRONT COUNTER (1) D/T	100-240V	0.5	20A/1P	NO	RJ45 VERIFY ALL ELECT & POS REQTS w/ MANUF
14a	3	VERIFONE SWITCH	(2) FRONT COUNTER (1) D/T					CONNECTED TO POS (1)
30	1	ORDER STATUS BOARD	(1) FRONT COUNTER					VERIFY ALL ELECT & POS REQTS w/ MANUF
OTHER COMMUNICATION DEVICES								
15	1	DRIVE THROUGH (DT) TIMER CONSOLE	OFFICE	120V	N/A		NO	RS232 MUST BE WITHIN 60FT OF DISPLAY
16	1	DT TIMER VDU DISPLAY		LOW VOLT	N/A		NO	
PHONE & DATA LINES								
18	0	SPARE	OFFICE	LOW VOLT	N/A		N/A	RJ45
19A	0	SPARE	OFFICE	LOW VOLT	N/A		N/A	RJ45
20	1	FAX LINE	OFFICE	LOW VOLT	N/A		N/A	RJ45 FAX LINE FOR OFFICE
21	1	PHONE LINE	OFFICE	LOW VOLT	N/A		N/A	RJ45 PHONE LINE FOR OFFICE
22	0	NOT USED						
23	1	HIGH SPEED INTERNET LINE (MNS)	OFFICE	LOW VOLT	N/A		N/A	RJ45 FOR SITE CONTROLLER & BOH PC
24	1	SYSTEM SECURITY DVR	SECURITY SYSTEM	LOW VOLT	N/A		N/A	RJ45 PLUGS INTO ROUTER PORT#2
25	8	DIGITAL MENU BOARD	OFFICE/SERVICE AREA	LOW VOLT	N/A		N/A	RJ45 PLUGS INTO ROUTER PORT#4
26	1	WIFI	OFFICE	LOW VOLT	N/A		N/A	RJ45 PLUGS INTO ROUTER PORT#5
26a	0	SECONDARY WIFI ACCESS POINT (OPT)	OFFICE	LOW VOLT	N/A		N/A	RJ45 PLUGS INTO ROUTER
27	1	OTT VOIP (PHONE)	OFFICE	LOW VOLT	N/A		N/A	RJ45 PLUGS INTO ROUTER
MUSIC SYSTEM								
28	1	MUSIC PLAYER	OFFICE					
29	0	NOT USED						
WORKSTATION								
31	1	MANAGER'S WORKSTATION	OFFICE					
32	0	MANAGERS WORKSTATION (OPT)						
FIREWALL								
33	1	FIREWALL	OFFICE	LOW VOLT	N/A		N/A	RJ45
34	1	BROADBAND MODEM	OFFICE	LOW VOLT	N/A		N/A	RJ45
35		TEMPORARY WIRELESS BROADBAND DIAL-UP DATA SOLUTION						
36		NOT USED						
37		NOT USED						
SWITCHES								
38	1	SWITCH	OFFICE					
39	1	DD UTILITY SWITCH (OPT)	OFFICE					
40	1	DVR NETWORK SWITCH	OFFICE					
41	1	DIGITAL MENU BOARD SWITCH	OFFICE					
42	1	KIOSK SWITCH	OFFICE					
43								
44								
MENU BOARD								
45	4	INT DIGITAL MENU BOARDS						
46	2	EXT DIGITAL MENU BOARDS	EXTERIOR DRIVE THRU					
47	0	DRIVE PREVIEW BOARD	EXTERIOR DRIVE THRU					
48	1	ORDER CONFIRMATION BOARD	EXTERIOR DRIVE THRU					
49	0	NOT USED						

DIDGITAL MENU BOARD RESPONSIBILITIES

- GC POWER/DATA RESPONSIBILITY
- EC TO RUN DEDICATED CONDUIT FROM POWER PANEL TO JUNCTION BOX ON BACK SIDE OF MENU BOARD FASCIA AT CENTER LINE OF POS
 - EC TO RUN CONDUIT WITH J-BOX FROM BACK SIDE OF MENU BOARD FASCIA AT CENTERLINE OF POS TO OFFICE

- DMB VENDOR POWER/DATA RESPONSIBILITY
- CUT HOLE IN MENU BOARD FASCIA FOR POWER/DATA STACK
 - IN STALL POWER/DATA STACK IN FASCIA
 - RUN ELECTRICAL CONDUCTOR WIRE FROM MENU BOARD FASCIA TO ELECTRICAL PANEL
 - MAKE FINAL ELECTRICAL CONNECTION AT POWER/ DATA STACK
 - MAKE FINAL ELECTRICAL CONNECTION TO CIRCUIT AT POWER PANEL
 - RUN CAT-5E CABLES AND TERMINATE ENDS AT MENU BOARD FASCIA POWER/DATA STACK AND IN OFFICE

*PRIOR TO BIDDING OR PERFORMING WORK GC TO COORDINATE WITH AUTHORITY HAVING JURISDICTION (AHJ). AHJ MAY REQUIRE FULL WIRE PREP BY EC. GC TO ALERT CM, FEE AND DMB INSTALLER IF EC MUST PERFORM ALL ELECTRICAL INSTALL WORK.

CONDUIT NOTES

- DMB: PROVIDE (8) CAT 5 WIRE PULLS FROM (2) QUAD DATA OUTLETS IN MENU BOARD SOFFIT TO (2) QUAD DATA OUTLETS IN OFFICE WALL
- 2 CONDUITS MIN SHALL BE USED BETWEEN OFFICE & OTHER PARTS OF THE STORE
1 CONDUIT FOR POS WIRING ONLY
1 CONDUIT FOR NON-POS ITEMS

KIOSK NOTES

- G.C. TO PROVIDE A POWER / POS STUB UP FROM FLOOR OR A UNISTRUT RAIL SUSPENDED FROM ROOF STRUCTURE @ 10'-6" A.F.F. FOR ELECTRICAL/DATA CONNECTIONS AT ORDER KIOSKS.
- 20A CIRCUIT & (3) CAT-6 DATA CABLES
EA - ALL WIRING & FINAL LOC'N's TBD IN FIELD w/ FRANCHISEE & MANUF REQUIREMENTS.
- PROVIDE WIRING FROM KIOSK TO FRONT LINE POS AREA FOR "REMOTE ASSISTANCE" w/ LIGHT AT POS UNIT - CONFIRM ALL REQUIREMENTS w/ MANUF.

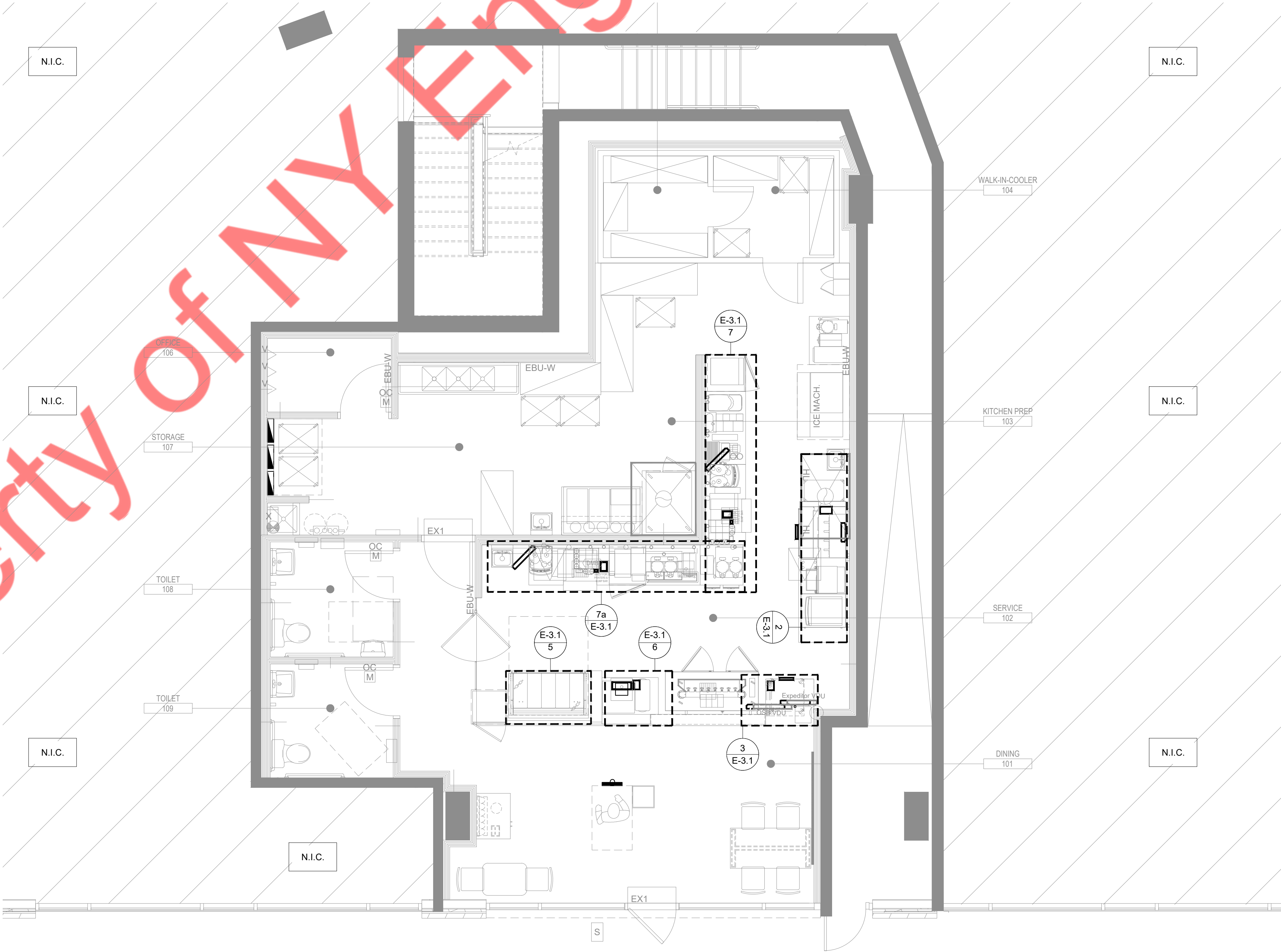
POS LEGENDS

POS	POINT OF SALES TERMINAL
VDU	VIDEO DISPLAY UNIT
R	ROUTER
SC	SITE CONTROL (SELF-MOUNTING) RADIANT ONLY
RP	RECEIPT PRINTER
PP	PREP PRINTER
FAX	FAX
BOH PC	BACK-OF-HOUSE PC
UPS	UPS
M	MODEM
SW	SWITCH
OT	ORDER TAKER TERMINAL
DTC	DRIVE THROUGH CONSOLE
DTT	DRIVE THROUGH TIMER
VS	VERIFONE SWITCH
PT	PAYMENT TERMINAL
CASH DR	CASH DRAWER
CD	COIN DISPENSER
MWS	MANAGER'S WORKSTATION
DVR	DVR SECURITY SYSTEM

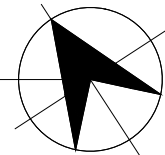
CAM	SECURITY SYSTEM CAMERA
PCD	PRICE CONFIRMATION DISPLAY
PCD	ORDER STATUS BOARD
KIOSK SW	KIOSK SWITCH
DMB SW	DIGITAL MENU BOARD SWITCH
DMB	DIGITAL MENU BOARD
EXT DMB	DRIVE THRU EXTERIOR DIGITAL MENU BOARD
TEMP M	TEMP WIRELESS DIAL UP
OCB	DRIVE THRU ORDER CONFIRMATION BOARD
DPB	DRIVE THRU DIGITAL PREVIEW BOARD
DPB	DRIVE THRU DIGITAL PREVIEW BOARD
OTT VOIP	OTT VOICE OVER-IP VOIP (PHONE)
	BUMP BAR
	VIDEO DISPLAY UNIT
	PRINTER
	POINT OF SALE TERMINAL
	SCANNER
	POS EQUIPMENT TAG
	DUPLEX RECEPTACLE
	DATA OUTLET, RJ45

GENERAL NOTES

- A. REFER TO HTTP://EXTRANET.DUNKINBRANDS.COM FOR A LISTING OF APPROVED POS VENDORS BY CONCEPT.
- B. FINAL POS DRAWINGS NEED TO BE PROVIDED TO POS VENDOR THAT IS SELECTED.
- C. POS VENDORS REQUIRE DEDICATED ISOLATED GROUNDED (DIG) OUTLETS ON A 20 AMP CIRCUIT DEDICATED ONLY TO POS EQUIPMENT. 60HZ, 120+/-10%. ALL POS TERMINALS AND VIDEO DISPLAY DEVICES REQUIRE A DUPLEX OUTLET. THE BACK OFFICE CONTROLLER REQUIRES A QUAD OUTLET. THE NETWORK SWITCH REQUIRES A DUPLEX. IF FEDERAL, STATE, AND LOCAL WIRING CODES DO NOT MEET THIS REQUIREMENT, CONTACT THE POS VENDOR FOR INFORMATION ON ADDITIONAL EQUIPMENT THAT CAN BE PURCHASED TO MEET THIS REQUIREMENT. IF THIS REQUIREMENT IS NOT MET, THE POS SYSTEM WARRANTY IS INVALID.
- D. ALL POWER INDICATED ON THIS PLAN MUST HAVE A THIRD WIRE, ISOLATED GROUND, AND BE TERMINATED WITHIN (4) FEET OF THE DEVICE.
- E. IG-5362 RECEPTACLES MUST BE USED FOR ALL POS UNITS. VDU UNITS AND SITE CONTROLLER UNIT (IN OFFICE). LABEL RECEPTACLES "POS ONLY".
- F. ALL LOW VOLTAGE WIRE SHALL BE CATEGORY 5e UNLESS OTHER WISE INDICATED.
- G. ALL LOW VOLTAGE CABLE TERMINATIONS SHALL BE BY THE ELECTRICAL CONTRACOR
- H. LOW VOLTAGE CABLE RUN IN 1½" CONDUIT FOR POS EQUIPMENT ONLY, AND MUST BE TERMINATED WITH RJ45 JACKS. ALL POS EQUIPMENT LINES TERMINATE AT THE FRONT COUNTER CHASE.
- I. A 12" MINIMUM SEPARATION MUST BE MAINTAINED BETWEEN LOW VOLTAGE WIRES AND POWER WIRING (TO AVOID ELECTRICAL INTERFERENCE).
- J. BRAND REQUIREMENTS DICTATE THAT A MINIMUM OF THREE CONDUITS BE USED FOR DATA LINES BETWEEN THE OFFICE AND OTHER PARTS OF THE STORE- ONE CONDUIT IS TO BE DEDICATED TO POS WIRING, ONE FOR DIGITAL MENUBOARD DATA LINES, AND ANOTHER FOR NON-POS ITEMS (I.E. SECURITY CAMERAS, DT TIMERS, HEAD SET WIRING).
- K. EXACT # OF RECEPTACLES ON OFFICE MUST BE COORDINATED ON A PROJECT-BY-PROJECT BASIS IN TERMS OF EQUIPMENT LOCATED IN THE OFFICE
- L. ALL CEILING MOUNTED VDUs TO BE SUSPENDED FROM UNISTRUT BY THREADED ROD W/ WHITE PVC SLEEVE. CONNECT UNISTRUT TO ROOF STRUCTURE. VDU BY POS VENDOR. UNISTRUT & THREADED ROD BY G.C. UNISTRUT TO SUPPORT MINIMUM 50 LB. WEIGHT
- M. VDU MOUNTING HEIGHTS (TO BOTTOM OF MONITOR) ARE AS FOLLOWS:
a. SANDWICH STATION - 68" A.F.F.
b. DRIVE THRU - 61" A.F.F.
- N. DIGITAL MENUBOARD PREP WIRING:
a. PROVIDE BOX, PLATE AND 1" DIA. CONDUIT FROM FROM (2) QUAD DATA OUTLETS IN MENUBOARD SOFFIT TO (2) QUAD DATA OUTLETS IN OFFICE WALL. EITHER (A) PROVIDE PULL STRING IN EACH CONDUIT (CAT 5 CABLING AND FINAL DATA CONNECTIONS BY DMB VENDOR), OR (B) PROVIDE ALL CAT 5 CABLING AND FINAL CONNECTIONS TO DATA PLATES/BOXES- COORD. W/ FEE



1 KEY PLAN
SCALE: 1/4" = 1'-0"



- A. ALL WORK SHALL COMPLY WITH ALL LOCAL AND STATE CODES AND AUTHORITIES HAVING JURISDICTION.
- B. THE CONTRACTOR SHALL SECURE AND PAY FOR ALL REQUIRED PERMITS AND ARRANGE ALL REQUIRED INSPECTIONS.
- C. THE CONTRACTOR SHALL COORDINATE HIS WORK WITH OTHER CONTRACTORS AND TRADES.
- D. THESE DRAWINGS, AS PREPARED, ARE DIAGRAMMATIC BUT SHALL BE FOLLOWED AS CLOSELY AS CONSTRUCTION OF THE PROJECT AND THE WORK OF THE TRADES WILL PERMIT. EQUIPMENT LOCATIONS INDICATED ARE APPROXIMATE. COORDINATE EXACT LOCATIONS AND REQUIRED CLEARANCES WITH EQUIPMENT SUPPLIER AND ALL TRADES PRIOR TO INSTALLATION.
- E. THE CONTRACTOR SHALL FURNISH AND INSTALL ALL THE EQUIPMENT INDICATED WITHIN THE MECHANICAL DRAWINGS UNLESS OTHERWISE NOTED. ALL EQUIPMENT SHALL BE UL LISTED. VERIFY LOCATION AND DIMENSIONS IN THE FIELD PRIOR TO FABRICATION AND / OR INSTALLATION.
- F. ALL EXTERIOR PENETRATIONS SHALL BE AT THE CONTRACTOR'S EXPENSE. COORDINATE WITH OWNER'S CONTRACTOR SO AS NOT TO VOID ANY EXISTING EXTERIOR WALL WARRANTIES.
- G. EACH UNIT GENERATING CONDENSATE SHALL BE PROVIDED WITH A CONDENSATE DRAIN WITH EXTERNAL, 4" DEEP P-TRAP, EXTEND DRAIN TO A ROOF MOUNTED SPLASH PAD OR AN ACCEPTABLE LOCATION REQUIRED BY CODE.
- H. DUCT SIZES SHOWN ON DRAWINGS ARE CLEAR INSIDE DIMENSION.
- I. ALL METAL DUCT AND AIR DISTRIBUTION DEVICES SHALL BE INSULATED WITH R-6, 75 DENSITY FOIL-BACKED INSULATION WITH FIRE AND SMOKE RATING 25-50).
- J. ALL DUCTWORK SHALL BE FABRICATED, INSTALLED, SEALED, AND INSULATED PER THE LATEST ISSUE OF SMACNA LOW-VOLUTAGE DUCT MANUAL.
- K. UNLESS OTHERWISE NOTED, ALL SUPPLY TAKEOFFS SHALL HAVE A MANUAL VOLUME CONTROL DAMPER.
- L. ALL FLEX DUCT SHALL BE UL LISTED, R-6, FOIL-BACKED, CLASSIFIED AS A CLASS 1 AIR DUCT. MAXIMUM LENGTH IS TO BE 12'-0" PER DROP OR PER LOCAL CODE.
- N. THE CONTRACTOR SHALL COORDINATE DIFFUSER LOCATIONS ON SITE WITH THE MOST RECENT REFLECTED CEILING PLAN.
- O. THE CONTRACTOR IS TO MAKE ALL LOW-VOLTAGE WIRING CONNECTIONS FOR ALL HVAC EQUIPMENT INCLUDING TEMPERATURE CONTROLS, WATER SOURCE HEAT PUMP UNITS, SMOKE DETECTORS AND CONTACTOR PANEL.
- P. PROVIDE AND INSTALL SMOKE DUCT DETECTORS IN EACH AIR CONDITIONING UNIT RETURN DUCT GREATER THAN 2000 CFM. CONTRACTOR SHALL PROVIDE INTERCONNECTION AND WIRE TO THE FIRE ALARM CONTROL PANEL IF REQUIRED. DUCT DETECTORS SHALL HAVE REMOTE TEST STATIONS LOCATED IN THE OFFICE NEAR THE RESPECTIVE THERMOSTATS. VERIFY CODE REQUIREMENTS FOR DUCT DETECTORS IN BOTH THE SUPPLY AND RETURN AIR STREAMS.
- Q. THE ENTIRE INSTALLATION SHALL BE GUARANTEED FREE OF DEFECTS AND CONTRACTOR SHALL REPAIR AND / OR REPLACE ANY DEFECTIVE MATERIALS OR EQUIPMENT AT NO COST TO THE OWNER FOR A MINIMUM PERIOD OF ONE YEAR FROM THE DATE OF ACCEPTANCE BY ARCHITECT OR ENGINEER.
- R. ALL WORK SHALL BE SUBJECT TO THE ACCEPTANCE AND APPROVAL OF THE ARCHITECT AND OWNER. THE ARCHITECT SHALL BE NOTIFIED OF ANY AND ALL DISCREPANCIES BETWEEN FIELD CONDITIONS AND THE CONTRACT DOCUMENTS. DISCREPANCIES WITH THAT PORTION OF THE WORK, FAILURE OF PROPER NOTIFICATION DOES NOT RELIEVE THE CONTRACTOR. THE CONTRACTOR SHALL CORRECT ANY AND ALL WORK ARISING FROM SUCH FAILURE TO COORDINATE DISCREPANCIES TO THE SATISFACTION OF THE ARCHITECT WITHOUT ADDITIONAL COST TO THE OWNER.
- S. THE CONTRACTOR SHALL, UPON COMPLETION OF PROJECT, PERFORM A COMPLETE TEST AND BALANCE OF ALL EQUIPMENT. PROVIDE A WRITTEN REPORT TO THE ARCHITECT. ALL CAPACITIES MUST BE SET TO WITHIN ±10% OF AMOUNTS INDICATED ON THE FLOOR PLAN AND SCHEDULES.

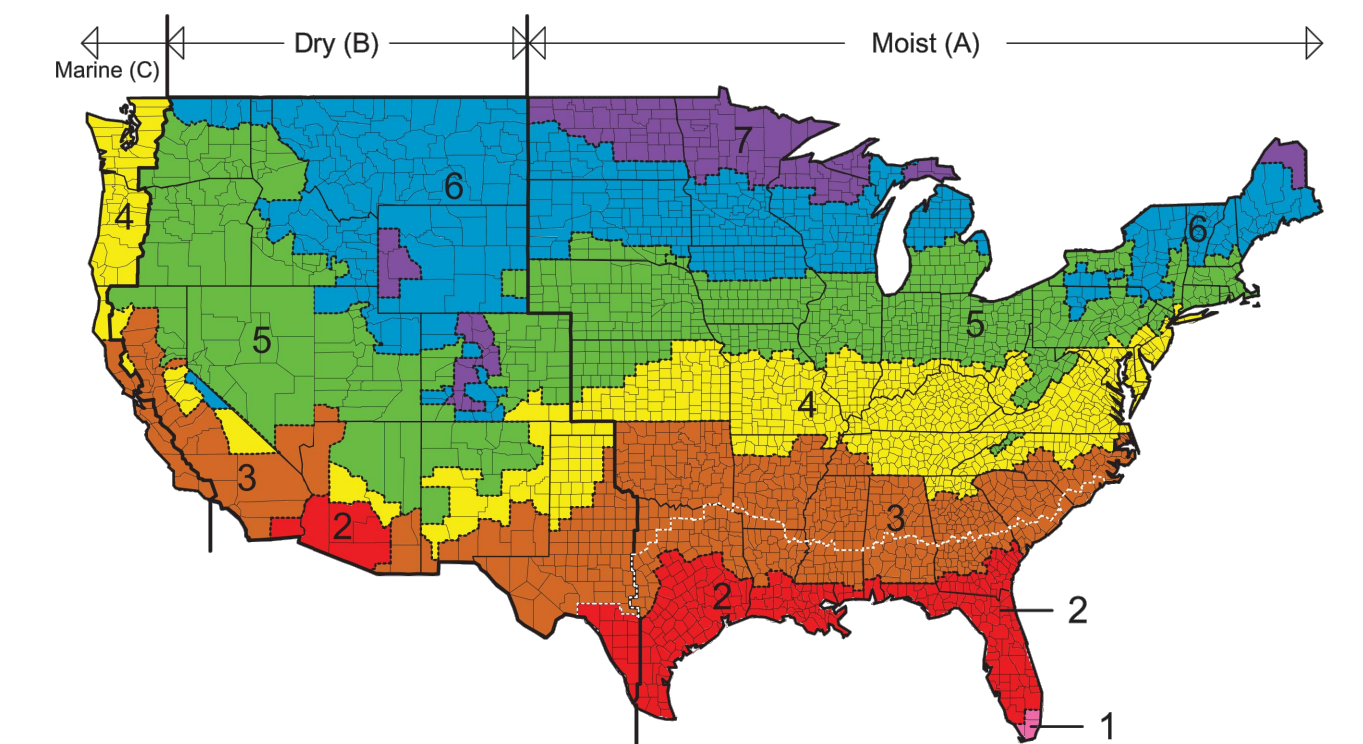
THE DESIGN PROFESSIONAL SHALL PERFORM A HEATING AND COOLING LOAD CALCULATION FOR EACH STORE DESIGNED.

TEMPERATURE (AMBIENT): 72 - 75 DEGREES
HUMIDITY (AMBIENT):

- NO LESS THAN 40%
- MAXIMUM 70%
- OPTIMAL 50-60%

HUMIDITY LEVELS IN PORTIONS OF THE CONTINENTAL UNITED STATES ARE HIGH ENOUGH TO EFFECT THE PRODUCTS SOLD IN THE STORES. THE DESIGN PROFESSIONAL SHALL ACCOUNT FOR THE OUTSIDE AIR CONDITIONS WHEN DESIGNING THE HVAC SYSTEM.

PLEASE VISIT THIS WEB SITE FOR CLIMATE REGIONS AND COUNTY.
WWW.ENERGY.GOV/SITES/PROD/FILES/2015/10/F27/B24_CLIMATE_REGION_GUIDE_7.3.PDF



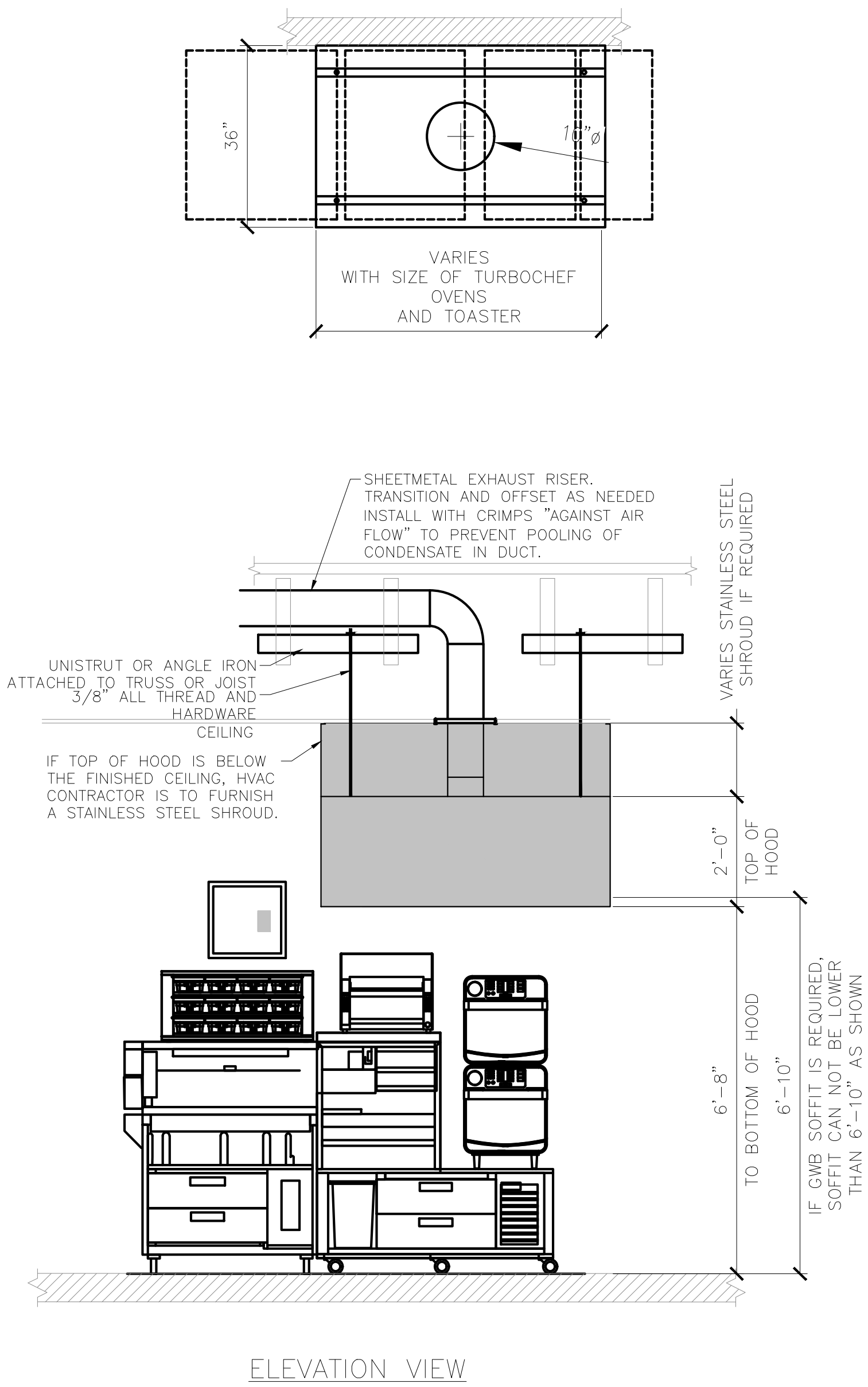
1. CONNECT AIR DISTRIBUTION DUCT TO PACKAGED UNIT EQUIPMENT AS NECESSARY.
2. EXHAUST FOR OVENS AND TOASTERS. HOOD IS REQUIRED AT THE SANDWICH STATION AND AT THE BACK OF HOUSE OVER THE SHEETMETAL DUCT FROM CONNECTION ON HOOD TO RESPECTIVE EXHAUST FAN. OFFSET AIR TRANSITION AT CONNECTIONS AS NEEDED. VERIFY DIMENSIONS PRIOR TO FABRICATION OR INSTALLATION. USE FACTORY-MANUFACTURED PIPE AND FITTINGS ONLY. VERIFY LOCATION ON SITE WITH MOST RECENT KITCHEN PLANS.
3. PROVIDE PROGRAMMABLE THERMOSTAT WITH LOCKING COVER. LOCATE THERMOSTAT IN MANAGER'S OFFICE. PROVIDE REMOTE SENSOR LOCATED 72" ABOVE FINISHED FLOOR NEAR LOCATION INDICATED. SEAL WALL OPENINGS WITH GULK. COORDINATE LOCATION ON SITE WITH GENERAL CONTRACTOR AND EQUIPMENT. AVOID LOCATING NEAR OR ABOVE SOURCE OF HEAT.
4. VENT LINE FOR COMBUSTION AIR INTAKE FROM GAS FIRED EQUIPMENT TO SIDEWALL TERMINATION KIT. ROUTE PIPING FROM RESPECTIVE UNIT TO LOCATION INDICATED ON PLAN. ROUTE PIPING WITH MINIMAL AMOUNT OF BENDS AND MINIMUM LENGTH AS REQUIRED BY RESPECTIVE UNIT MANUFACTURER'S REQUIREMENTS.
5. CONNECT TOILET AND HOOD EXHAUST AIR DUCT TO EXISTING SIDEWALL LOUVERS WITH INSECT SCREEN. CONTRACTOR TO FIELD VERIFY THE SIZE AND CONDITION OF THE EXISTING LOUVERS.
6. HOOD CONTROLLER UNIT. COORDINATE WITH CAPTIVE AIRE ON THE REQUIRED LOCATION AND CONNECTION REQUIREMENTS.
7. ROOM TEMPERATURE SENSOR FOR THE CONTROL OF THE HOODS. COORDINATE WITH CAPTIVE AIRE ON THE REQUIRED LOCATION AND CONNECTION REQUIREMENTS.
8. EXISTING 2-1/2" CS/CR (60 GPM) AND 2" HWS/HWR (30 GPM) STUBS WITH SHUTOFF VALVES.
9. CONNECT NEW 2" CS/CR (31.3 GPM) AND 1-1/4" HWS/HWR (12.02 GPM) PIPES TO EXISTING STUBS.
10. VENT LINE FOR COMBUSTION EXHAUST FROM GAS FIRED EQUIPMENT TO SIDEWALL TERMINATION KIT. ROUTE PIPING FROM RESPECTIVE UNIT TO LOCATION INDICATED ON PLAN. ROUTE PIPING WITH MINIMAL AMOUNT OF BENDS AND MINIMUM LENGTH AS REQUIRED BY RESPECTIVE UNIT MANUFACTURER'S REQUIREMENTS.
11. CONNECT OUTSIDE AIR AND COMBUSTION AIR DUCT TO EXISTING SIDEWALL LOUVERS WITH INSECT SCREEN. CONTRACTOR TO FIELD VERIFY THE SIZE AND CONDITION OF THE EXISTING LOUVERS.

HOOD CONTROL SEQUENCE OF OPERATIONS

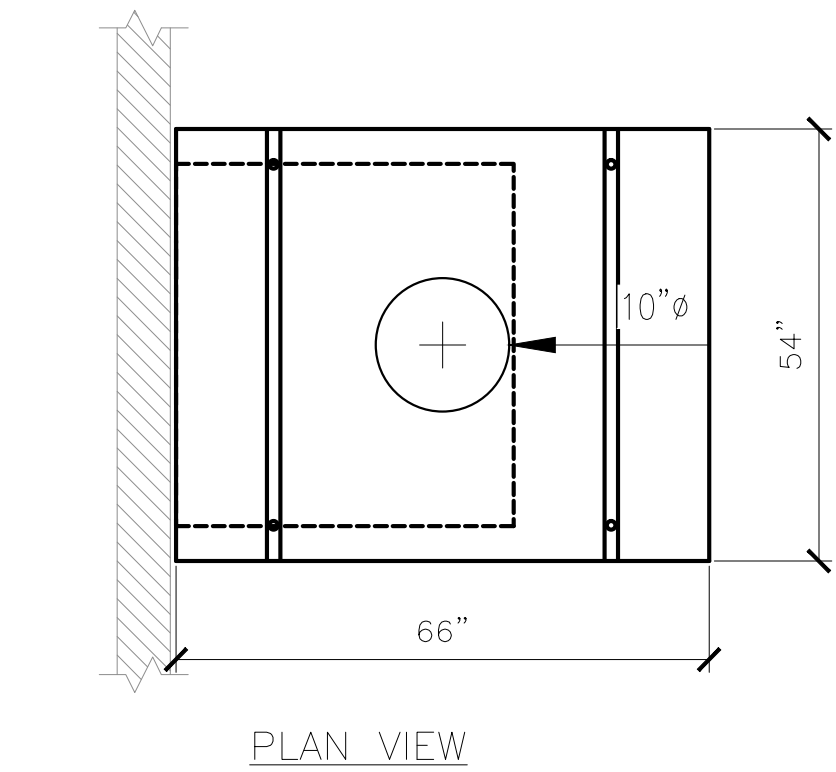
- MANUAL CONTROL:
- TO TURN ON THE HOOD SYSTEM, PUSH THE FAN AND LIGHTS BUTTONS ON THE TOUCH SCREEN USER INTERFACE. THE FANS AND LIGHTS WILL TURN ON AND THE INDICATING LIGHTS ADJACENT TO THE BUTTONS WILL ILLUMINATE INDICATING THE FANS AND LIGHTS ARE ON.
 - TO TURN OFF THE HOOD SYSTEM, PUSH THE FAN AND LIGHTS BUTTONS ON THE TOUCH SCREEN USER INTERFACE. THE FANS AND LIGHTS WILL TURN OFF AND THE INDICATING LIGHTS ADJACENT TO THE BUTTONS WILL GO OUT INDICATING THE FANS AND LIGHTS ARE OFF.
 - THE HOOD WILL REMAIN ON BASED ON DIFFERENTIAL TEMPERATURE BETWEEN THE ROOM THERMOSTAT AND THE HOOD TEMPERATURE PROBE. ONCE THE EQUIPMENT COOLS DOWN, THE HOOD WILL SYSTEM WILL TURN OFF AUTOMATICALLY.
- AUTOMATIC CONTROL:
- THE HOOD SYSTEM WILL TURN ON AUTOMATICALLY ONCE THE TEMPERATURE WITHIN THE HOOD SYSTEM REACHES A SET TEMPERATURE. THE INDICATOR LIGHT ADJACENT TO THE FANS BUTTON ON THE TOUCH SCREEN USER INTERFACE WILL ILLUMINATE. THE LIGHTS WILL NEED TO BE TURNS ON MANUALLY.
 - THE HOOD SYSTEM WILL TURN OFF AUTOMATICALLY AS DESCRIBED ABOVE.
- GENERAL:
- THE MECHANICAL CONTRACTOR SHALL COORDINATE WITH CAPTIVE AIRE.
 - THE MECHANICAL CONTRACTOR SHALL COORDINATE WITH THE ELECTRICAL CONTRACTOR ON THE REQUIRED WIRING OF THE OF THE HOOD CONTROLS PER THE CAPTIVE AIRE DRAWINGS.

GENERAL NOTES

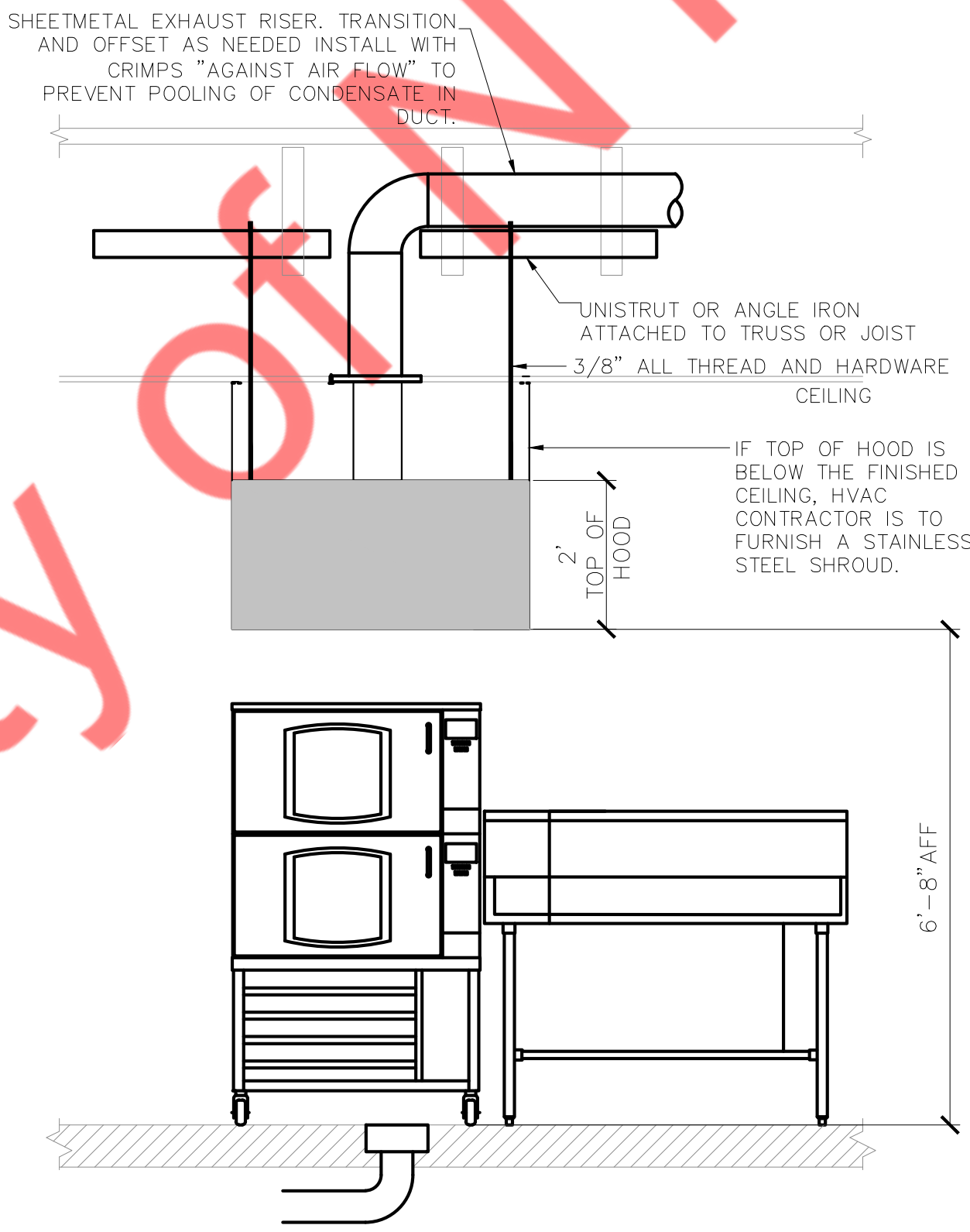
- A. ALL ELECTRICAL "FIELD" CONNECTIONS AND RELATED INTERCONNECTIONS BY ELECTRICAL CONTRACTOR.
- B. ALL PLUMBING "FIELD" CONNECTIONS AND RELATED INTERCONNECTIONS BY PLUMBING CONTRACTOR.
- C. ALL ASSOCIATED HANGER MATERIALS BY INSTALLING CONTRACTOR.
- D. ANY LIGHTS SHOWN INSTALLED BY THE MANUFACTURER, AND FACTORY PREWIRED PER THE PLANS. INTERCONNECTIONS BETWEEN HOODS AND TO SWITCHES BY ELECTRICAL CONTRACTOR.
- E. SEISMIC RESTRAINTS ARE RESPONSIBILITY OF INSTALLING CONTRACTOR.
- F. INSTALLING CONTRACTOR ASSUMES ALL RELATED RESPONSIBILITY FOR VERIFICATION OF DIMENSIONAL DATA CONTAINED ON THESE DOCUMENTS FOR ACCURACY, INTEGRATION, AND ADMINISTRATION OF CODE REQUIREMENTS IN EFFECT PRIOR TO ANY RELEASE FOR PRODUCTION OF EQUIPMENT SHOWN.
- G. SIGNED AND "APPROVED" COPIES OF THIS DOCUMENT MUST BE RECEIVED BY THE FACTORY PRIOR TO COMMENCEMENT OF FABRICATION.
- H. NOMINAL HOOD DIMENSIONS AS SHOWN ON DRAWINGS.
- I. THE HOODS INDICATED SHALL BE CAPTIVE-AIRE MODEL VH8 OR APPROVED EQUAL. THE HOOD SHALL BE SINGLE WALL TYPE HOOD WITH NO BUILT-IN MAKE-UP AIR CAPABILITIES. THE HOOD COMPONENTS SHALL BE FABRICATED OF TYPE 304 STAINLESS STEEL WITH A #3 OR #4 POLISH, ON ALL EXPOSED SURFACES. THE HOOD SHALL BE PROVIDED WITH HANGING ANGLES ON EACH END OF THE HOOD. NOMINAL HOOD DIMENSIONS SHALL BE AS SHOWN ON DRAWINGS.



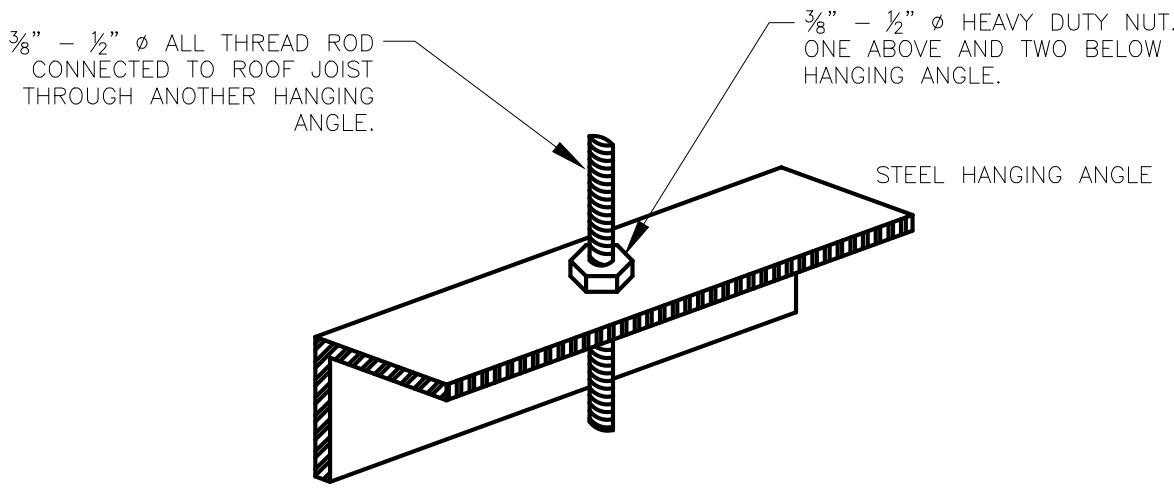
ELEVATION VIEW



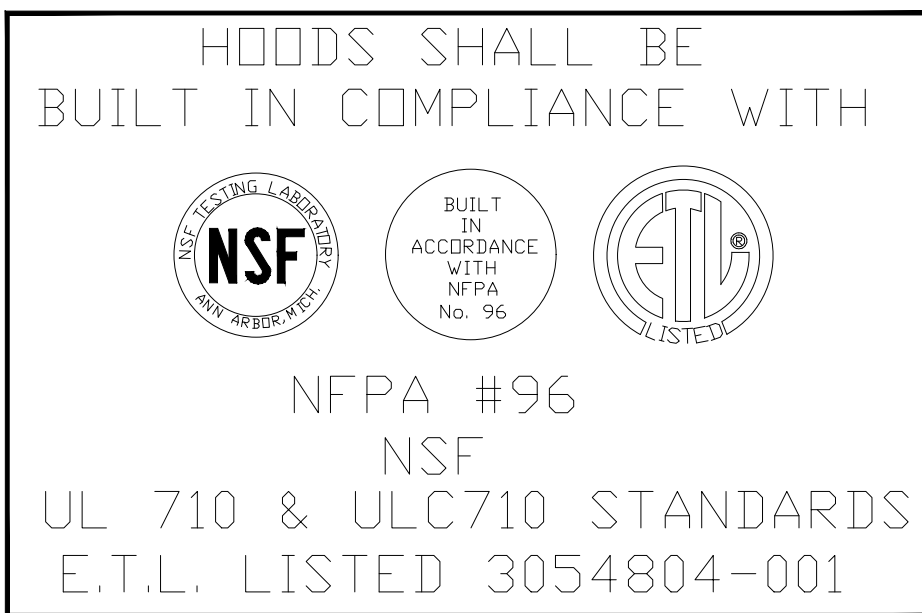
PLAN VIEW



ELEVATION VIEW

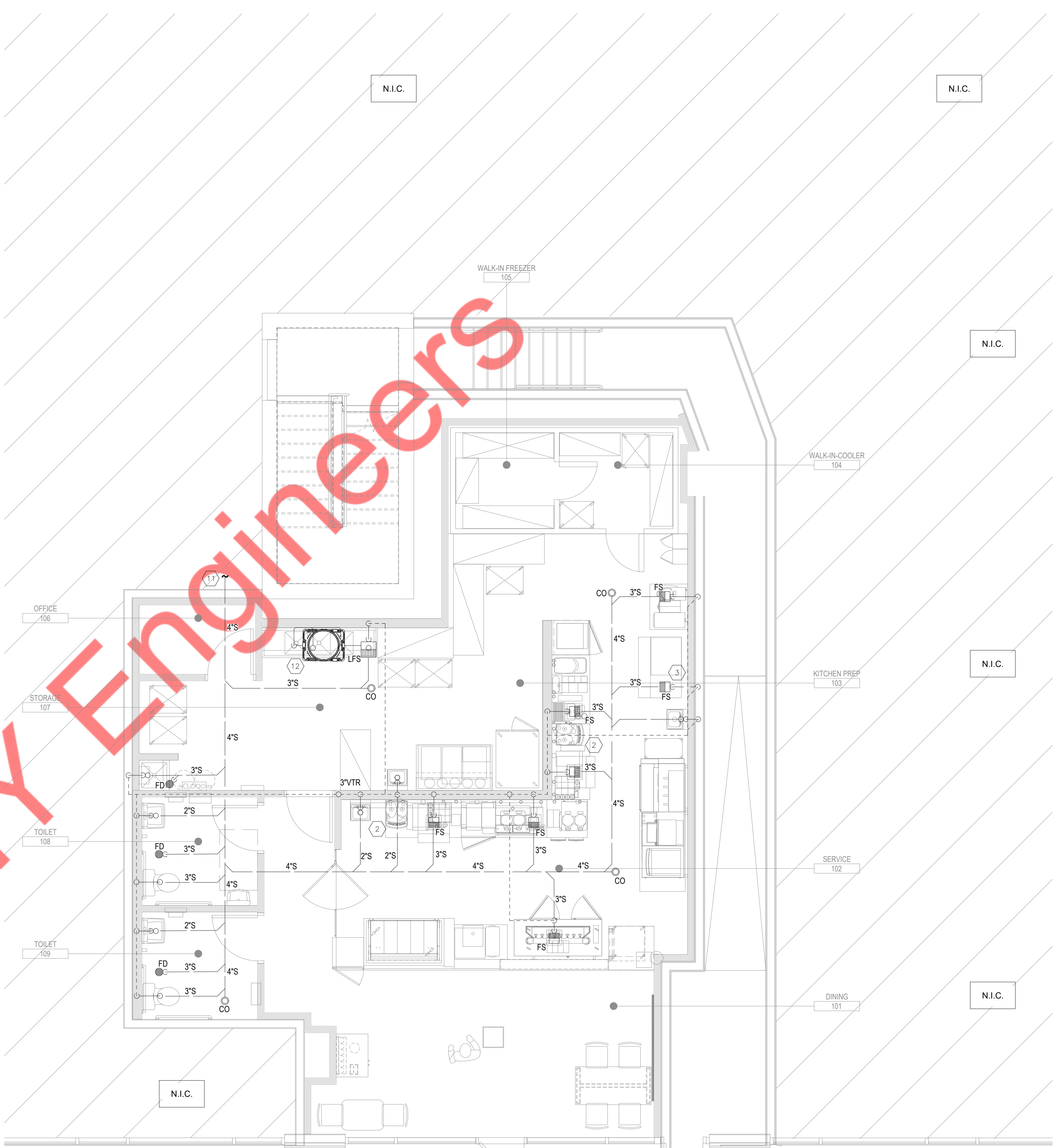
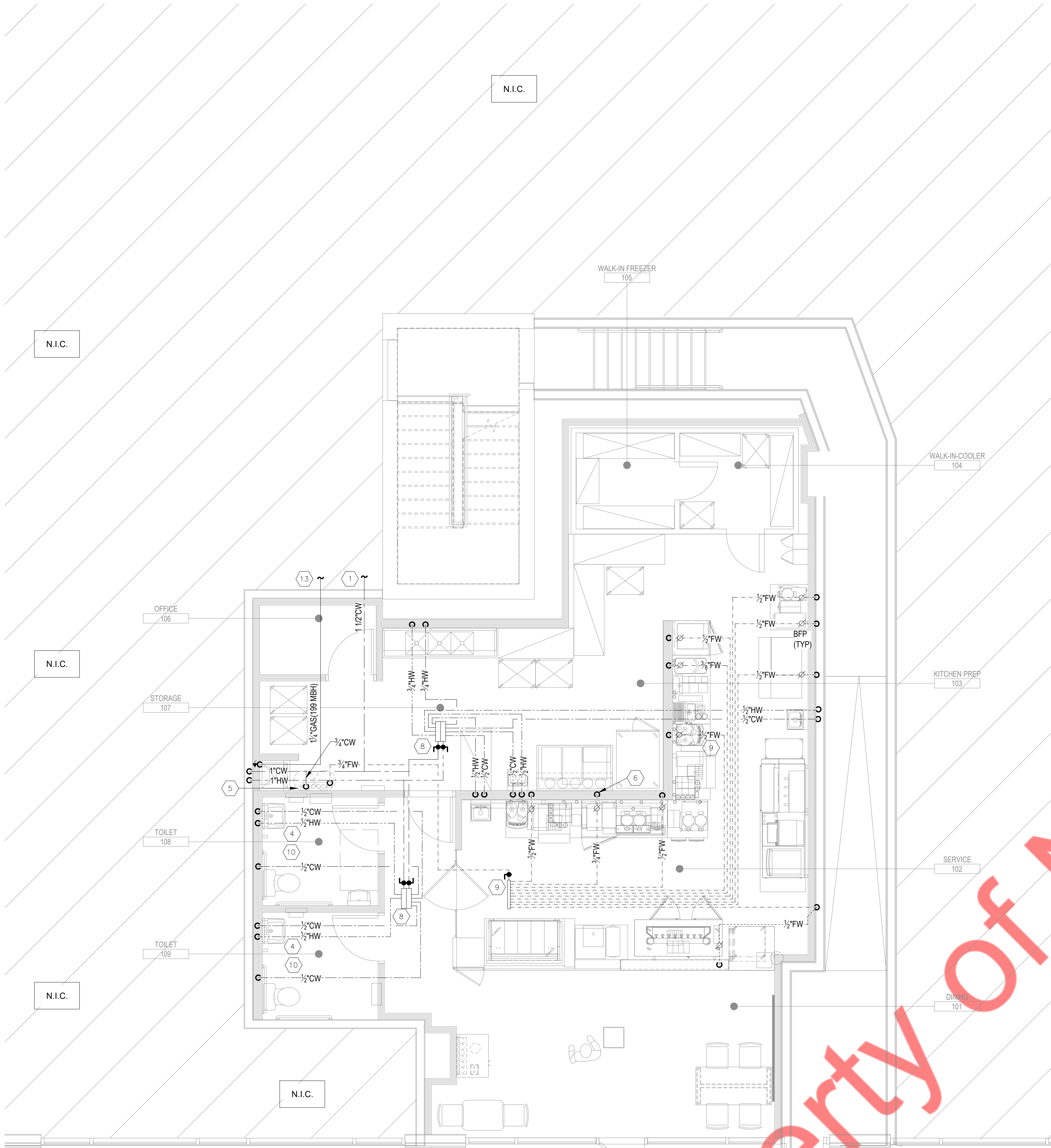


3 HANGING ANGLE DETAIL



EXHAUST FAN AND GRILL WITH METAL CEILING TILES OVER THE OVENS AND TOASTERS IS THE MINIMUM REQUIREMENT PER DBI STANDARDS. THE ARCHITECT / ENGINEER IS RESPONSIBLE IN DETERMINING IF AN ACTUAL HOOD IS THE MINIMUM REQUIRED PER LOCAL JURISDICTION.

DESIGN PROFESSIONAL TO DESIGN HOOD FOR EVERY LOCATION PER CRITERIA SHOWN



1 WATER AND GAS PLAN
SCALE: 1/4" = 1'-0"

2 SANITARY PLAN
SCALE: 1/4" = 1'-0"

GENERAL NOTES

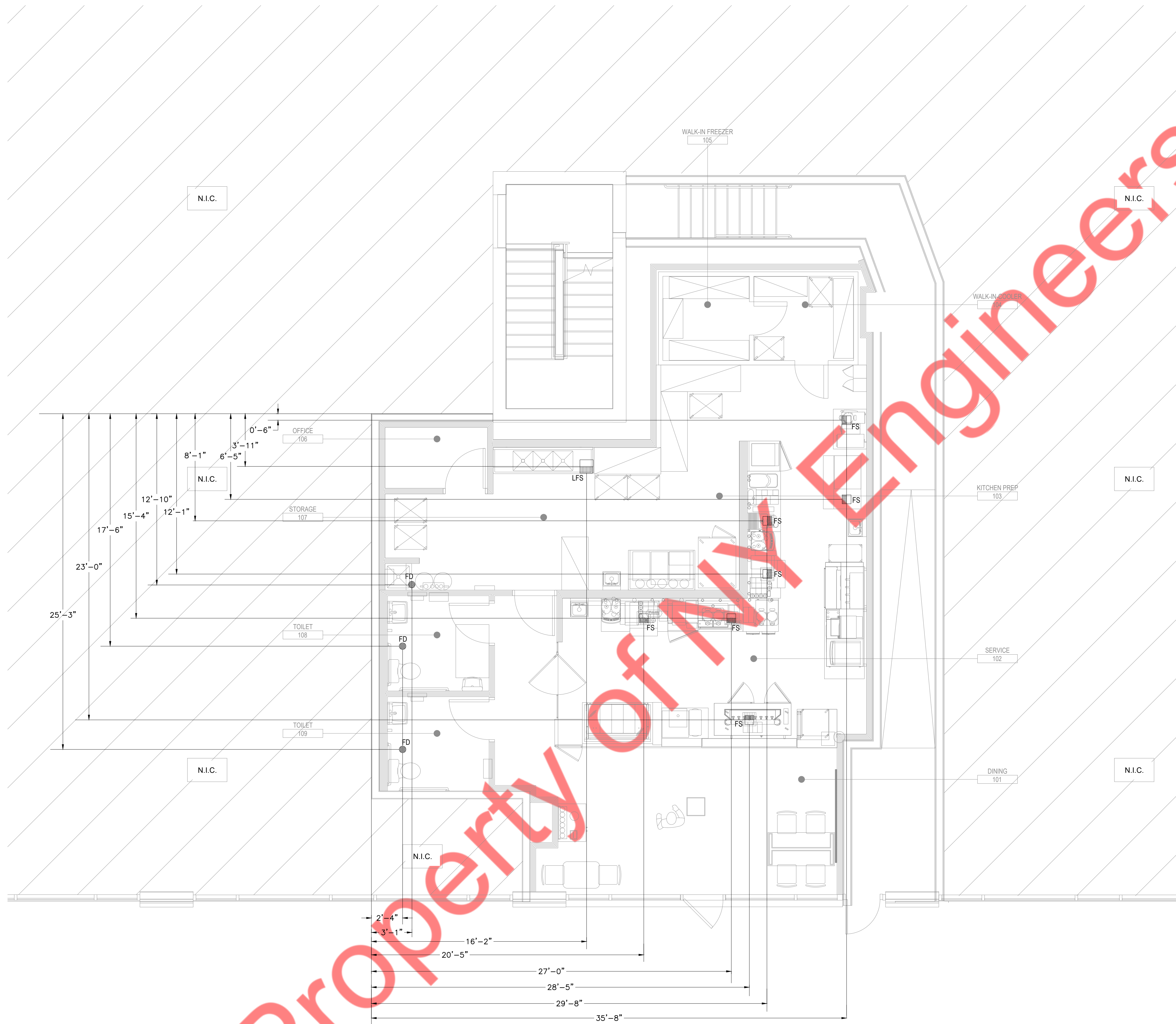
- ALL WORK SHALL COMPLY WITH ALL LOCAL AND STATE CODES AND AUTHORITIES HAVING JURISDICTION.
- THE CONTRACTOR SHALL SECURE AND PAY FOR ALL REQUIRED PERMITS AND ARRANGE ALL REQUIRED INSPECTIONS
- THE CONTRACTOR SHALL COORDINATE HIS WORK WITH OTHER CONTRACTORS AND TRADES.
- THESE DRAWINGS, AS PREPARED, ARE DIAGRAMMATIC BUT SHALL BE FOLLOWED AS CLOSELY AS CONSTRUCTION OF THE PROJECT AND THE WORK OF THE TRADES WILL PERMIT. EQUIPMENT LOCATIONS INDICATED ARE APPROXIMATE. COORDINATE EXACT LOCATIONS AND REQUIRED CLEARANCES WITH EQUIPMENT SUPPLIER AND ALL TRADES PRIOR TO INSTALLATION.
- THE CONTRACTOR SHALL FURNISH AND INSTALL ALL THE EQUIPMENT INDICATED WITHIN THESE DRAWINGS UNLESS OTHERWISE NOTED. VERIFY LOCATION AND DIMENSIONS IN THE FIELD PRIOR TO FABRICATION AND / OR INSTALLATION.
- ALL ROOF PENETRATIONS SHALL BE AT THE CONTRACTOR'S EXPENSE. COORDINATE WITH OWNER'S ROOFING CONTRACTOR SO AS NOT TO VOID ANY EXISTING ROOF WARRANTIES.
- THE ENTIRE INSTALLATION SHALL BE GUARANTEED FREE OF DEFECTS AND CONTRACTOR SHALL REPAIR AND / OR REPLACE ANY DEFECTIVE MATERIALS OR EQUIPMENT AT NO COST TO THE OWNER FOR A MINIMUM PERIOD OF ONE YEAR FROM THE DATE OF ACCEPTANCE BY ARCHITECT OR ENGINEER.
- ALL WORK SHALL BE SUBJECT TO THE ACCEPTANCE AND APPROVAL OF THE ARCHITECT AND OWNER. THE ARCHITECT SHALL BE NOTIFIED OF ANY AND ALL DISCREPANCIES BETWEEN FIELD CONDITIONS AND THE CONTRACT DOCUMENTS BEFORE PROCEEDING WITH THAT PORTION OF THE WORK. FAILURE OF PROPER NOTIFICATION DOES NOT RELIEVE THE CONTRACTOR. THE CONTRACTOR SHALL CORRECT ANY AND ALL WORK ARISING FROM SUCH FAILURE TO COORDINATE DISCREPANCIES TO THE SATISFACTION OF THE ARCHITECT WITHOUT ADDITIONAL COST TO THE OWNER.
- ALL KITCHEN, PREP AREA AND SALES AREA EQUIPMENT WILL BE FURNISHED AND INSTALLED. EQUIPMENT WILL BE FURNISHED WITH TRIM, FAUCETS, ESCUTCHEONS, ETC. PLUMBING CONTRACTOR SHALL PROVIDE ALL ROUGH-IN TRAPS AND MAKE ALL FINAL CONNECTIONS (SEE EQUIPMENT SCHEDULE).
- ALL PIPING TO BE CONCEALED IN HUNG CEILINGS, CHASES AND FURRED SPACES.
- REFER TO EQUIPMENT SCHEDULE AND EQUIPMENT SPECIFICATIONS FOR EXACT LOCATIONS OF PLUMBING CONNECTIONS.
- THE CONTRACTOR SHALL VERIFY DEPTH, SIZE, LOCATION OF ALL EXISTING UTILITIES IN FIELD PRIOR TO STARTING WORK.
- THE CONTRACTOR SHALL PROVIDE AND INSTALL ALL PIPE HANGERS, AND SUPPORTS IN ACCORDANCE WITH THE LOCAL APPLICABLE CODES.
- THE CONTRACTOR TO PROVIDE TRAP PRIMERS, DEEP SEAL TRAP OR TRAP SEAL ON ALL FLOOR DRAINS AS PER APPLICABLE CODE.

GENERAL NOTES

- ALL PENETRATIONS REQUIRED FOR PLUMBING EQUIPMENT AND PIPING THROUGH ANY WALL SHALL BE PROPERLY SEALED OFF TO MAINTAIN THE INTEGRITY OF THE STRUCTURE.
- ALL SHUT OFF AND ISOLATION VALVES SHALL BE BALL TYPE. ALL VALVES SERVING TOILETS AND SINKS SHALL BE ANGLE STOP TYPE.
- PROVIDE AN INDIVIDUAL BALL VALVE AND BACK CHECK VALVE TO EACH INDIVIDUAL PIECE OF EQUIPMENT.
- PROVIDE ASSE1022 BACKFLOW PREVENTER FOR COFFEE MACHINES 124G, 124A, 124E, 116, 200A, 108A, 257 & ESPRESSO MACHINES 96.4.
- PROVIDE AERATORS ON ALL HAND SINKS AND LAVATORIES THROUGHOUT THE FACILITY.
- PROVIDE KAY CHEMICAL DISPENSER (SEE NATIONAL ACCOUNTS) AT MOP SINK AND THREE COMP SINK. MOUNT BOTTLE AND DISPENSER ABOVE SINK AS REQUIRED BY CHEMICAL SUPPLIER.
- PROVIDE HEAT TRAPS ON THE SUPPLY AND DISCHARGE PIPING ASSOCIATED WITH THE EQUIPMENT FOR NON CIRCULATING HOT WATER SYSTEMS AS PER SECTION 504.4 OF 2009 IECC.

PLAN NOTES

- CONNECT TO EXISTING WATER LINE. CONTRACTOR TO VERIFY SIZE AND LOCATION IN FIELD. PROVIDE BACKFLOW PREVENTOR PER REQUIREMENTS OF LOCAL JURISDICTION.
- PIPE INDIRECT DRAIN FROM TROUGH ON COUNTER AT COFFEE STATIONS TO FLOOR SINK. PROVIDE AIR GAP AS REQUIRED BY CODE.
- PROVIDE INDIRECT DRAIN FROM ICE CUBER AND ICE BIN TO ADJACENT FLOOR SINK. CONSULT ICE MACHINE INSTRUCTION MANUAL FOR INDIRECT PIPING REQUIREMENTS.
- PROVIDE THERMOSTATIC MIXING VALVE AT ALL HAND SINKS AND LAVATORIES IF NOT ALREADY PROVIDED WITH THEM. SET AT 110°F MAXIMUM.
- WATER FILTRATION SYSTEM. MOUNT TOP OF SYSTEM 48" AFF. VERIFY ACTUAL LOCATION.
- PROVIDE A PRESSURE REDUCING VALVE, PRESSURE GAUGE, AND SHUT-OFF VALVE AT PLUMBING CONNECTIONS TO OVEN.
- PROVIDE A PRESSURE REDUCING VALVE FOR ESPRESSO MACHINE.
- PROVIDE VALVED MANIFOLD. TAG LINE AS TO FIXTURE SERVED.
- PROVIDE VALVELESS MULTI-PORT TEE. TAG LINE AS TO FIXTURE SERVED.
- ALL BATHROOM FAUCETS TO BE PROVIDED WITH SENSOR.
- CONNECT TO EXISTING SANITARY LINE. CONTRACTOR TO VERIFY SIZE AND LOCATION IN FIELD.
- GREASE TRAP SHALL BE PROVIDED. CONTRACTOR COORDINATE FINAL LOCATION WITH MANUFACTURER.
- CONNECT TO EXISTING GAS LINE. CONTRACTOR TO VERIFY SIZE AND LOCATION IN FIELD.



1 DIMENSIONAL PLAN
SCALE: 1/4" = 1'-0"

