



A. ALL WORK SHALL COMPLY WITH ALL LOCAL AND STATE CODES AND AUTHORITIES HAVING JURISDICTION.

B. THE CONTRACTOR SHALL SECURE AND PAY FOR ALL REQUIRED PERMITS AND ARRANGE ALL REQUIRED INSPECTIONS.

C. THE CONTRACTOR SHALL COORDINATE HIS WORK WITH OTHER CONTRACTORS AND TRADES.

D. THESE DRAWINGS, AS PREPARED, ARE DIAGRAMMATIC BUT SHALL BE FOLLOWED AS CLOSELY AS CONSTRUCTION OF THE PROJECT AND THE WORK OF THE TRADES WILL PERMIT. EQUIPMENT LOCATIONS INDICATED ARE APPROXIMATE. COORDINATE EXACT LOCATIONS AND REQUIRED CLEARANCES WITH EQUIPMENT SUPPLIER AND ALL TRADES PRIOR TO INSTALLATION.

E. THE CONTRACTOR SHALL FURNISH AND INSTALL ALL THE EQUIPMENT INDICATED WITHIN THE MECHANICAL DRAWINGS UNLESS OTHERWISE NOTED. ALL EQUIPMENT SHALL BE UL LISTED. VERIFY LOCATION AND DIMENSIONS IN THE FIELD PRIOR TO FABRICATION AND / OR INSTALLATION.

F. ALL ROOF PENETRATIONS SHALL BE AT THE CONTRACTOR'S EXPENSE. COORDINATE WITH OWNER'S ROOFING CONTRACTOR SO AS NOT TO VOID ANY EXISTING ROOF WARRANTIES.

G. EACH UNIT GENERATING CONDENSATE SHALL BE PROVIDED WITH A CONDENSATE DRAIN WITH EXTERNAL, 4" DEEP P-TRAP. EXTEND DRAIN TO A ROOF MOUNTED SPLASH PAD OR AN ACCEPTABLE LOCATION REQUIRED BY CODE.

H. DUCT SIZES SHOWN ON DRAWINGS ARE CLEAR INSIDE DIMENSION.

I. ALL METAL DUCT AND AIR DISTRIBUTION DEVICES SHALL BE INSULATED WITH R-6, 75 DENSITY FOIL-BACKED INSULATION WITH FIRE AND SMOKE RATING 25-50).

J. ALL DUCTWORK SHALL BE FABRICATED, INSTALLED, SEALED, AND INSULATED PER THE LATEST ISSUE OF SMACNA LOW-VELOCITY DUCT MANUAL.

K. UNLESS OTHERWISE NOTED, ALL SUPPLY TAKEOFFS SHALL HAVE A MANUAL VOLUME CONTROL DAMPER.

L. ALL FLEX DUCT SHALL BE UL LISTED, R-6, FOIL-BACKED, CLASSIFIED AS A CLASS 1 AIR DUCT. MAXIMUM LENGTH IS TO BE 12'-0" PER DROP OR PER LOCAL CODE.

N. THE CONTRACTOR SHALL COORDINATE DIFFUSER LOCATIONS ON SITE WITH THE MOST RECENT REFLECTED CEILING PLAN.

O. THE CONTRACTOR IS TO MAKE ALL LOW-VOLTAGE WIRING CONNECTIONS FOR ALL HVAC EQUIPMENT INCLUDING TEMPERATURE CONTROLS, ROOF TOP UNITS, SMOKE DETECTORS AND CONTACTOR PANEL.

P. PROVIDE AND INSTALL SMOKE DUCT DETECTORS IN EACH AIR CONDITIONING UNIT RETURN DUCT GREATER THAN 2000 CFM. CONTRACTOR SHALL PROVIDE INTERCONNECTION AND WIRE TO THE FIRE ALARM CONTROL PANEL IF REQUIRED. DUCT DETECTORS SHALL HAVE REMOTE TEST STATIONS LOCATED IN THE OFFICE NEAR THE RESPECTIVE THERMOSTATS. VERIFY CODE REQUIREMENTS FOR DUCT DETECTORS IN BOTH THE SUPPLY AND RETURN AIR STREAMS.

Q. THE ENTIRE INSTALLATION SHALL BE GUARANTEED FREE OF DEFECTS AND CONTRACTOR SHALL REPAIR AND / OR REPLACE ANY DEFECTIVE MATERIALS OR EQUIPMENT AT NO COST TO THE OWNER FOR A MINIMUM PERIOD OF ONE YEAR FROM THE DATE OF ACCEPTANCE BY ARCHITECT OR ENGINEER.

R. ALL WORK SHALL BE SUBJECT TO THE ACCEPTANCE AND APPROVAL OF THE ARCHITECT AND OWNER. THE ARCHITECT SHALL BE NOTIFIED OF ANY AND ALL DISCREPANCIES BETWEEN FIELD CONDITIONS AND THE CONTRACT DOCUMENTS BEFORE PROCEEDING WITH THAT PORTION OF THE WORK. FAILURE OF PROPER NOTIFICATION DOES NOT RELIEVE THE CONTRACTOR. THE CONTRACTOR SHALL CORRECT ANY AND ALL WORK ARISING FROM SUCH FAILURE TO COORDINATE DISCREPANCIES TO THE SATISFACTION OF THE ARCHITECT WITHOUT ADDITIONAL COST TO THE OWNER.

S. THE CONTRACTOR SHALL, UPON COMPLETION OF PROJECT, PERFORM A COMPLETE TEST AND BALANCE OF ALL EQUIPMENT. PROVIDE A WRITTEN REPORT TO THE ARCHITECT. ALL CAPACITIES MUST BE SET TO WITHIN ±10% OF AMOUNTS INDICATED ON THE FLOOR PLAN AND SCHEDULES.

THE DESIGN PROFESSIONAL SHALL PERFORM A HEATING AND COOLING LOAD CALCULATION FOR EACH STORE DESIGNED.

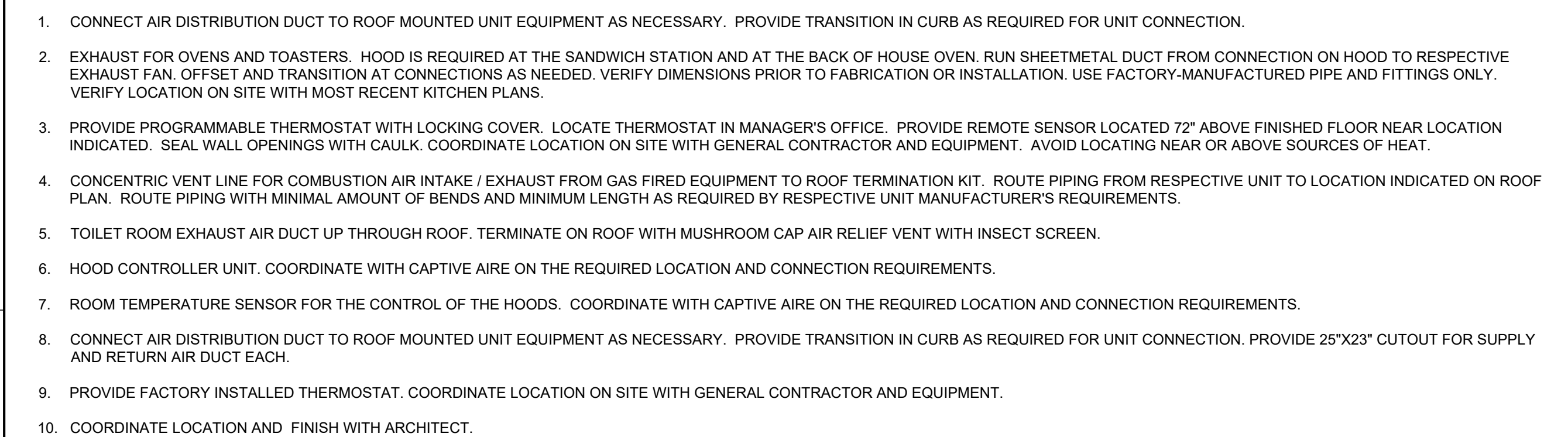
TEMPERATURE (AMBIENT): 72 - 75 DEGREES

HUMIDITY (AMBIENT):

- NO LESS THAN 40%
- MAXIMUM 70%
- OPTIMAL 50-60%

HUMIDITY LEVELS IN PORTIONS OF THE CONTINENTAL UNITED STATES ARE HIGH ENOUGH TO EFFECT THE PRODUCTS SOLD IN THE STORES. THE DESIGN PROFESSIONAL SHALL ACCOUNT FOR THE OUTSIDE AIR CONDITIONS WHEN DESIGNING THE HVAC SYSTEM.

PLEASE VISIT THIS WEB SITE FOR CLIMATE REGIONS BY COUNTY,
WWW.ENERGY.GOV/SITES/PROD/FILES/2015/10/F27/BA_CLIMATE_REGION_GUIDE_7.3.PDF

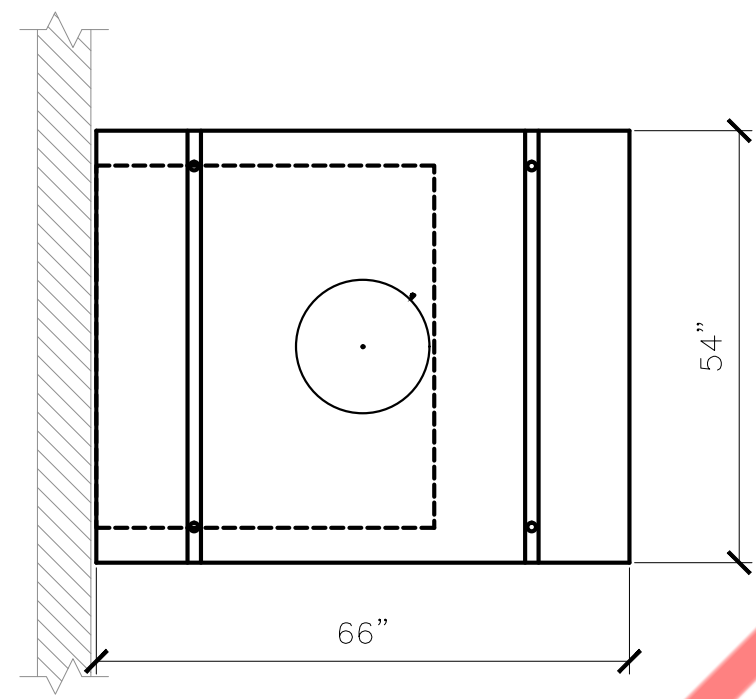
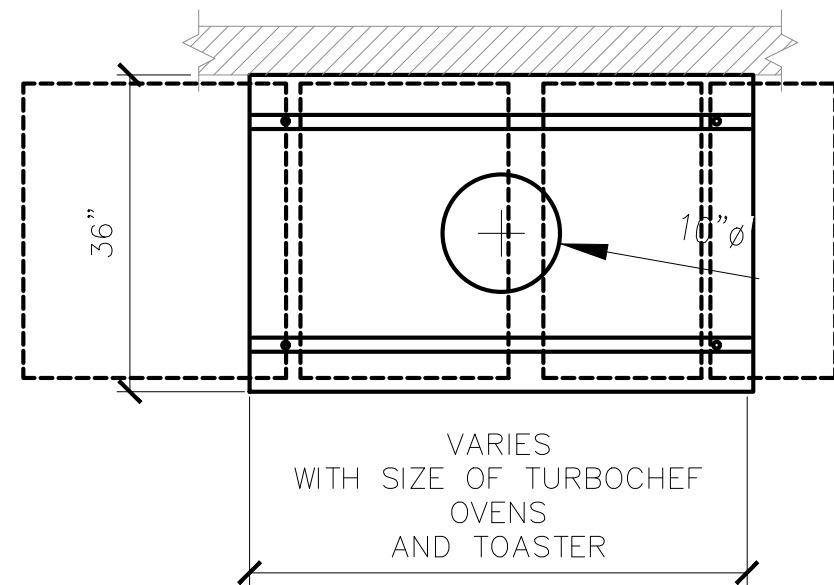


HOOD CONTROL SEQUENCE OF OPERATIONS

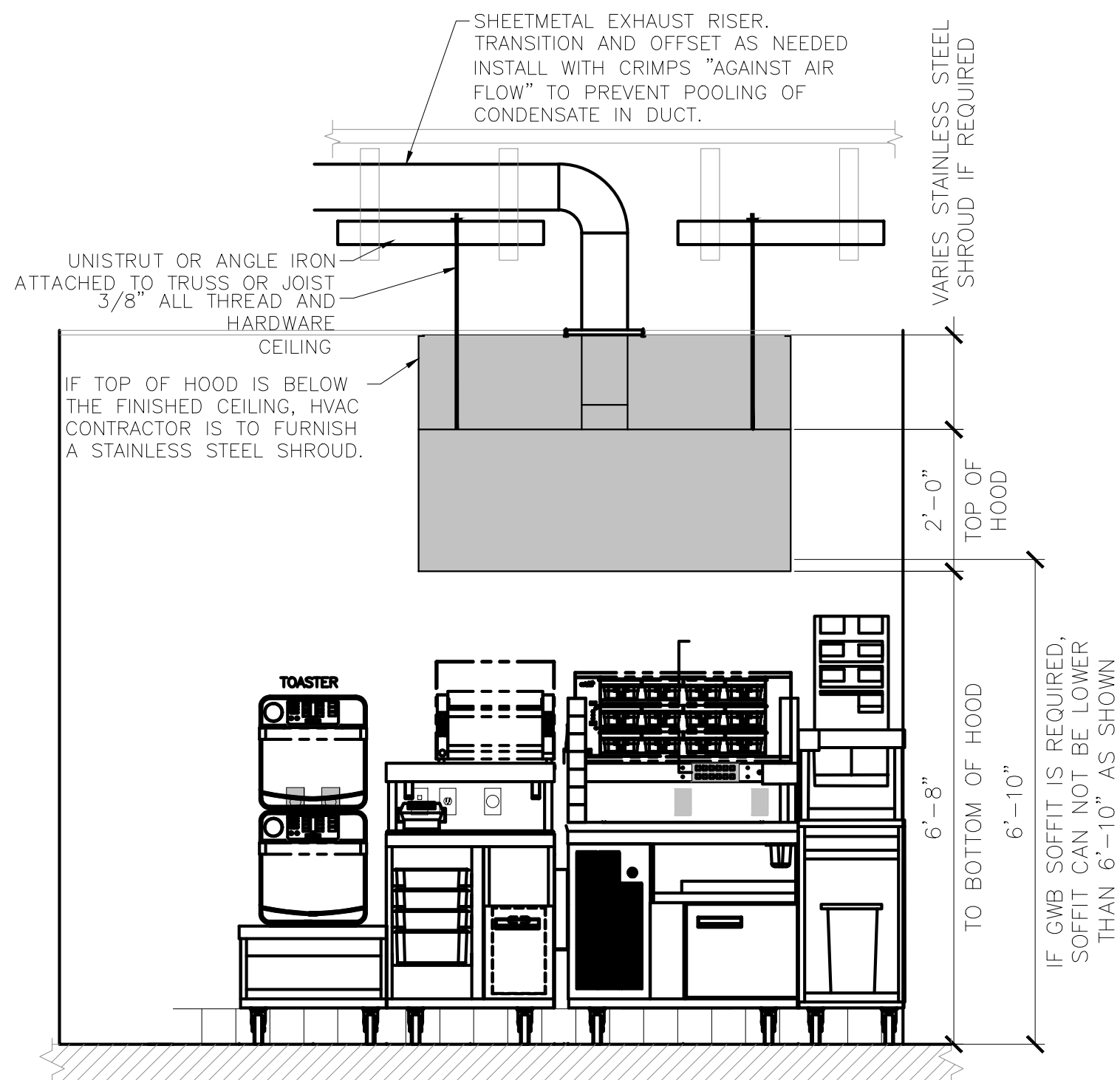
- MANUAL CONTROL:
- TO TURN ON THE HOOD SYSTEM, PUSH THE FAN AND LIGHTS BUTTONS ON THE TOUCH SCREEN USER INTERFACE. THE FANS AND LIGHTS WILL TURN ON AND THE INDICATING LIGHTS ADJACENT TO THE BUTTONS WILL ILLUMINATE INDICATING THE FANS AND LIGHTS ARE ON.
 - TO TURN OFF THE HOOD SYSTEM, PUSH THE FAN AND LIGHTS BUTTONS ON THE TOUCH SCREEN USER INTERFACE. THE FANS AND LIGHTS WILL TURN OFF AND THE INDICATING LIGHTS ADJACENT TO THE BUTTONS WILL GO OUT INDICATING THE FANS AND LIGHTS ARE OFF.
 - THE HOOD WILL REMAIN ON BASED ON DIFFERENTIAL TEMPERATURE BETWEEN THE ROOM THERMOSTAT AND THE HOOD TEMPERATURE PROBE. ONCE THE EQUIPMENT COOLS DOWN, THE HOOD WILL SYSTEM WILL TURN OFF AUTOMATICALLY.
- AUTOMATIC CONTROL:
- THE HOOD SYSTEM WILL TURN ON AUTOMATICALLY ONCE THE TEMPERATURE WITHIN THE HOOD SYSTEM REACHES A SET TEMPERATURE. THE INDICATOR LIGHT ADJACENT TO THE FANS BUTTON ON THE TOUCH SCREEN USER INTERFACE WILL ILLUMINATE. THE LIGHTS WILL NEED TO BE TURNS ON MANUALLY.
 - THE HOOD SYSTEM WILL TURN OFF AUTOMATICALLY AS DESCRIBED ABOVE.
- GENERAL:
- THE MECHANICAL CONTRACTOR SHALL COORDINATE WITH CAPTIVE AIRE.
 - THE MECHANICAL CONTRACTOR SHALL COORDINATE WITH THE ELECTRICAL CONTRACTOR ON THE REQUIRED WIRING OF THE OF THE HOOD CONTROLS PER THE CAPTIVE AIRE DRAWINGS.

GENERAL NOTES

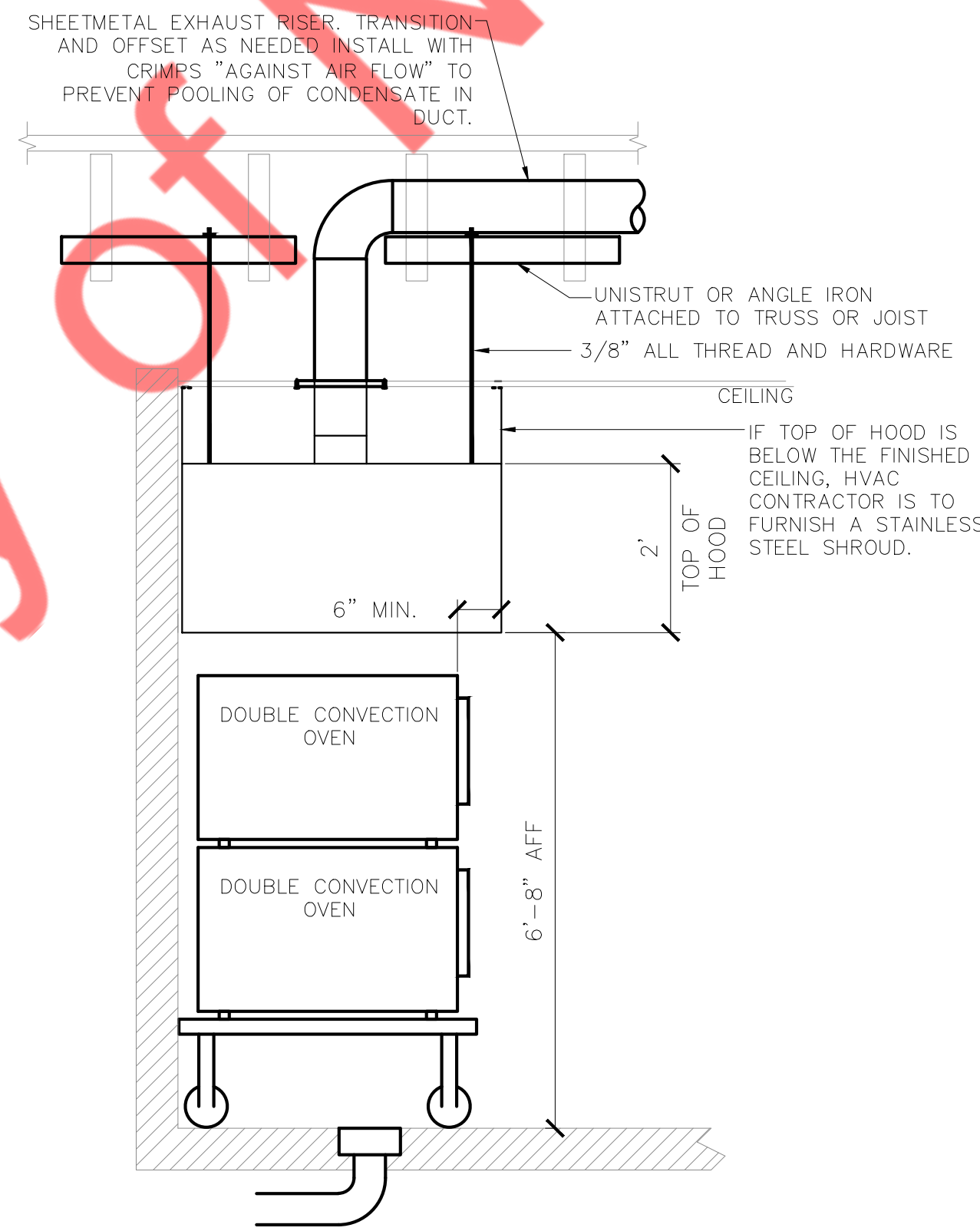
- A. ALL ELECTRICAL "FIELD" CONNECTIONS AND RELATED INTERCONNECTIONS BY ELECTRICAL CONTRACTOR.
- B. ALL PLUMBING "FIELD" CONNECTIONS AND RELATED INTERCONNECTIONS BY PLUMBING CONTRACTOR.
- C. ALL ASSOCIATED HANGER MATERIALS BY INSTALLING CONTRACTOR.
- D. ANY LIGHTS SHOWN INSTALLED BY THE MANUFACTURER, AND FACTORY PREWIRED PER THE PLANS. INTERCONNECTIONS BETWEEN HOODS AND TO SWITCHES BY ELECTRICAL CONTRACTOR.
- E. SEISMIC RESTRAINTS ARE RESPONSIBILITY OF INSTALLING CONTRACTOR.
- F. INSTALLING CONTRACTOR ASSUMES ALL RELATED RESPONSIBILITY FOR VERIFICATION OF DIMENSIONAL DATA CONTAINED ON THESE DOCUMENTS FOR ACCURACY, INTEGRATION, AND ADMINISTRATION OF CODE REQUIREMENTS IN EFFECT PRIOR TO ANY RELEASE FOR PRODUCTION OF EQUIPMENT SHOWN.
- G. SIGNED AND "APPROVED" COPIES OF THIS DOCUMENT MUST BE RECEIVED BY THE FACTORY PRIOR TO COMMENCEMENT OF FABRICATION.
- H. NOMINAL HOOD DIMENSIONS AS SHOWN ON DRAWINGS.
- I. THE HOODS INDICATED SHALL BE CAPTIVE-AIRE MODEL VHB OR APPROVED EQUAL. THE HOOD SHALL BE SINGLE WALL TYPE HOOD WITH NO BUILT-IN MAKE-UP AIR CAPABILITIES. THE HOOD COMPONENTS SHALL BE FABRICATED OF TYPE 304 STAINLESS STEEL WITH A #3 OR #4 POLISH, ON ALL EXPOSED SURFACES. THE HOOD SHALL BE PROVIDED WITH HANGING ANGLES ON EACH END OF THE HOOD. NOMINAL HOOD DIMENSIONS SHALL BE AS SHOWN ON DRAWINGS.



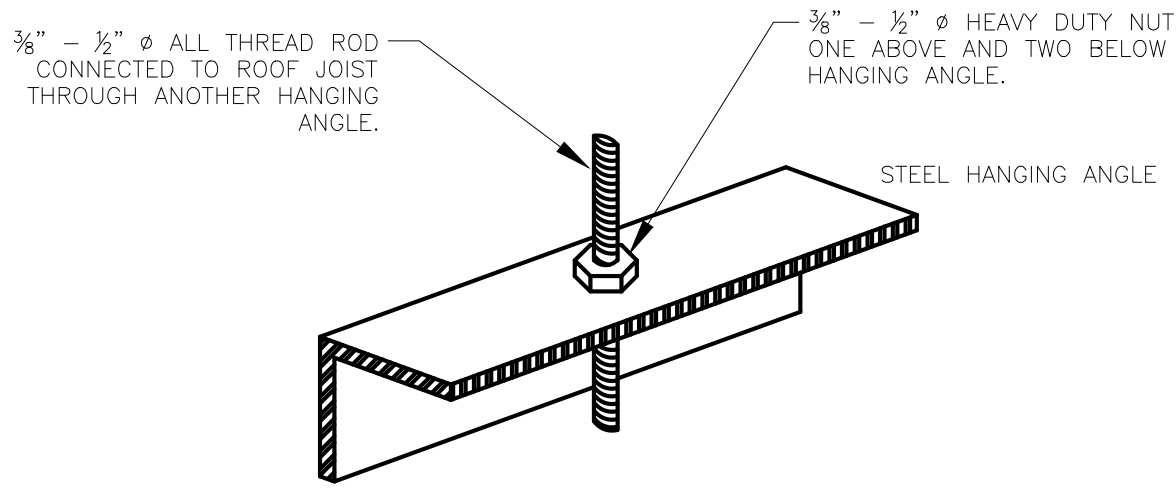
PLAN VIEW



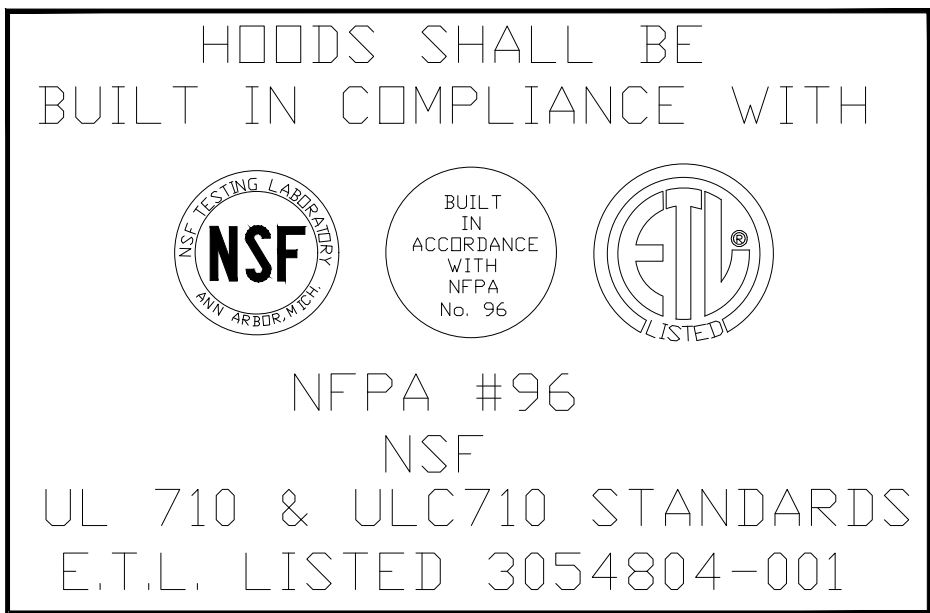
ELEVATION VIEW



ELEVATION VIEW



3 HANGING ANGLE DETAIL



EXHAUST FAN AND GRILL WITH METAL CEILING TILES OVER THE OVENS AND TOASTERS IS THE MINIMUM REQUIREMENT PER DBI STANDARDS. THE ARCHITECT / ENGINEER IS RESPONSIBLE IN DETERMINING IF AN ACTUAL HOOD IS THE MINIMUM REQUIRED PER LOCAL JURISDICTION.

DESIGN PROFESSIONAL TO DESIGN HOOD FOR EVERY LOCATION PER CRITERIA SHOWN

GENERAL NOTES

- ALL WORK SHALL COMPLY WITH ALL LOCAL AND STATE CODES AND AUTHORITIES HAVING JURISDICTION.
- THE CONTRACTOR SHALL SECURE AND PAY FOR ALL REQUIRED PERMITS AND ARRANGE ALL REQUIRED INSPECTIONS.
- THE CONTRACTOR SHALL COORDINATE HIS WORK WITH OTHER CONTRACTORS AND TRADES.
- THESE DRAWINGS, AS PREPARED, ARE DIAGRAMMATIC BUT SHALL BE FOLLOWED AS CLOSELY AS CONSTRUCTION OF THE PROJECT AND THE WORK OF THE TRADES WILL PERMIT. EQUIPMENT LOCATIONS INDICATED ARE APPROXIMATE. COORDINATE EXACT LOCATIONS AND REQUIRED CLEARANCES WITH EQUIPMENT SUPPLIER AND ALL TRADES PRIOR TO INSTALLATION.
- THE CONTRACTOR SHALL FURNISH AND INSTALL ALL THE EQUIPMENT INDICATED WITHIN THESE DRAWINGS UNLESS OTHERWISE NOTED. VERIFY LOCATION AND DIMENSIONS IN THE FIELD PRIOR TO FABRICATION AND / OR INSTALLATION.
- ALL ROOF PENETRATIONS SHALL BE AT THE CONTRACTOR'S EXPENSE. COORDINATE WITH OWNER'S ROOFING CONTRACTOR SO AS NOT TO VOID ANY EXISTING ROOF WARRANTIES.
- THE ENTIRE INSTALLATION SHALL BE GUARANTEED FREE OF DEFECTS AND CONTRACTOR SHALL REPAIR AND / OR REPLACE ANY DEFECTIVE MATERIALS OR EQUIPMENT AT NO COST TO THE OWNER FOR A MINIMUM PERIOD OF ONE YEAR FROM THE DATE OF ACCEPTANCE BY ARCHITECT OR ENGINEER.
- ALL WORK SHALL BE SUBJECT TO THE ACCEPTANCE AND APPROVAL OF THE ARCHITECT AND OWNER. THE ARCHITECT SHALL BE NOTIFIED OF ANY AND ALL DISCREPANCIES BETWEEN FIELD CONDITIONS AND THE CONTRACT DOCUMENTS BEFORE PROCEEDING WITH THAT PORTION OF THE WORK. FAILURE OF PROPER NOTIFICATION DOES NOT RELIEVE THE CONTRACTOR. THE CONTRACTOR SHALL CORRECT ANY AND ALL WORK ARISING FROM SUCH FAILURE TO COORDINATE DISCREPANCIES TO THE SATISFACTION OF THE ARCHITECT WITHOUT ADDITIONAL COST TO THE OWNER.
- COORDINATE ALL EQUIPMENT UTILITY INFORMATION SHOWN ON THIS SHEET WITH THE DUNKIN' BRANDS EQUIPMENT SCHEDULE AND EQUIPMENT MANUFACTURER'S CUT SHEETS.
- ALL EXTERIOR LIGHTS TO BE TIMECLOCK CONTROLLED.
- ALL 15 AND 20 AMP, 120 VOLT RECEPTACLES IN KITCHEN AND PREP AREAS SHALL BE GFI TYPE.
- ALL JUNCTION BOXES SHOWN ON THIS PLAN ARE TO BE INSTALLED ABOVE THE FINISHED CEILING.
- ALL EMERGENCY AND EXIT FIXTURES SHALL BE CONNECTED TO LOCAL LIGHTING CIRCUIT AHEAD OF ANY SWITCHING. PROVIDE ADDITIONAL FIXTURES AS NEEDED TO MEET THE CODE REQUIREMENTS PER LOCAL REQUIREMENTS.
- PROVIDE WOOD BLOCKING BEHIND ALL EXTERIOR LIGHTING FIXTURES COORDINATE WITH GENERAL CONTRACTOR.
- THE CONTRACTOR IS RESPONSIBLE FOR REVIEWING THE LATEST KITCHEN PLANS AND EQUIPMENT CUTS SHEETS FOR PROPER EQUIPMENT LOCATIONS AND CONNECTION REQUIREMENTS PRIOR TO STARTING WORK.

CARBON MONOXIDE MONITORING:
THE DESIGN PROFESSIONAL IS RESPONSIBLE FOR PROVIDING A MEANS OF MONITORING AND ALARMING THE OCCUPANTS UPON THE PRESENCE OF CARBON MONOXIDE (CO). THE MEANS OF DETECTION SHALL BE LOCATED NEAR EQUIPMENT THAT PRODUCES PRODUCT OF COMBUSTION. LOCATIONS SHALL INCLUDE BUT NOT BE LIMITED TO: GAS FIRED OVENS, GAS FIRED WATER HEATERS, GAS FIRED FURNACES, ETC.

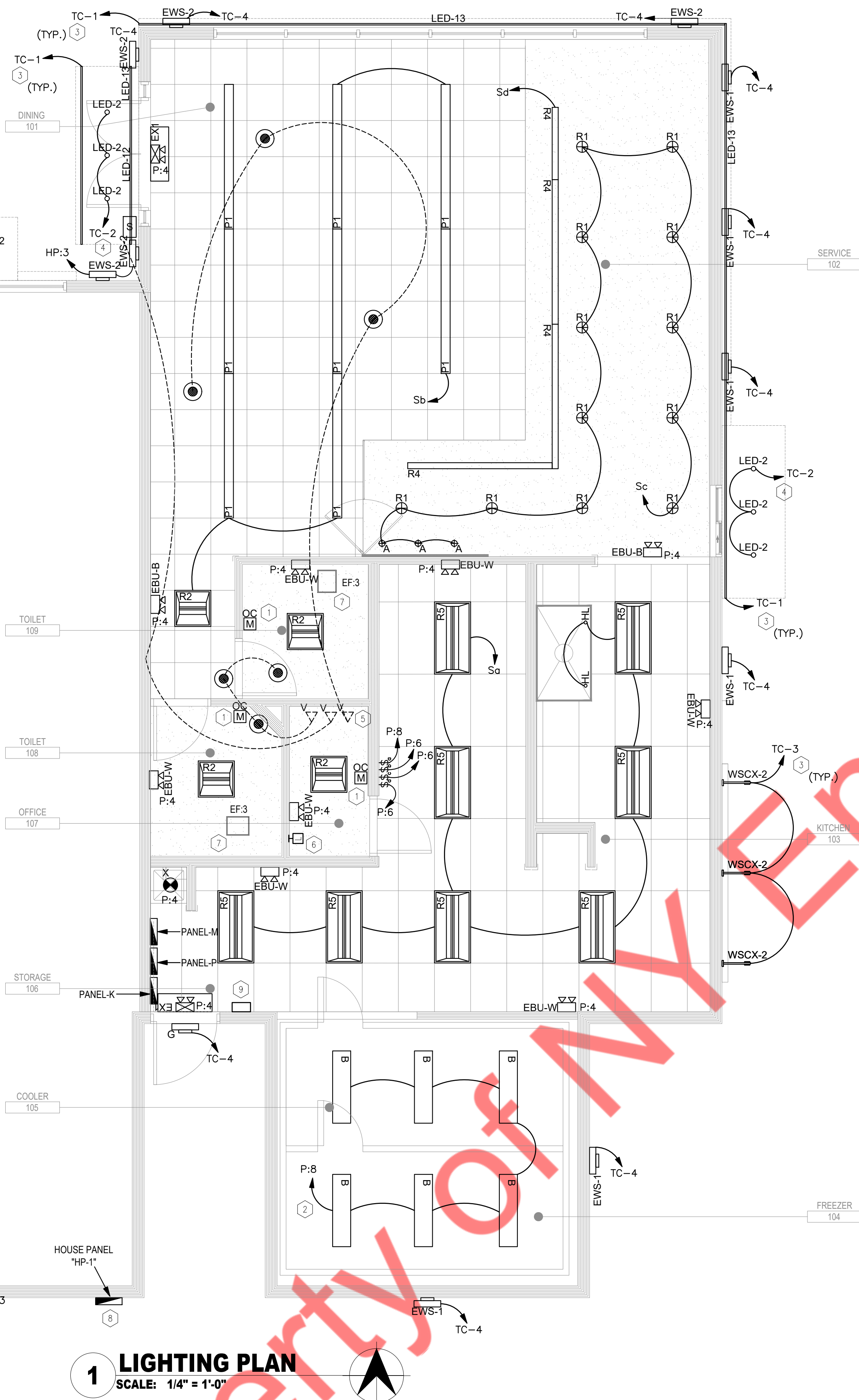
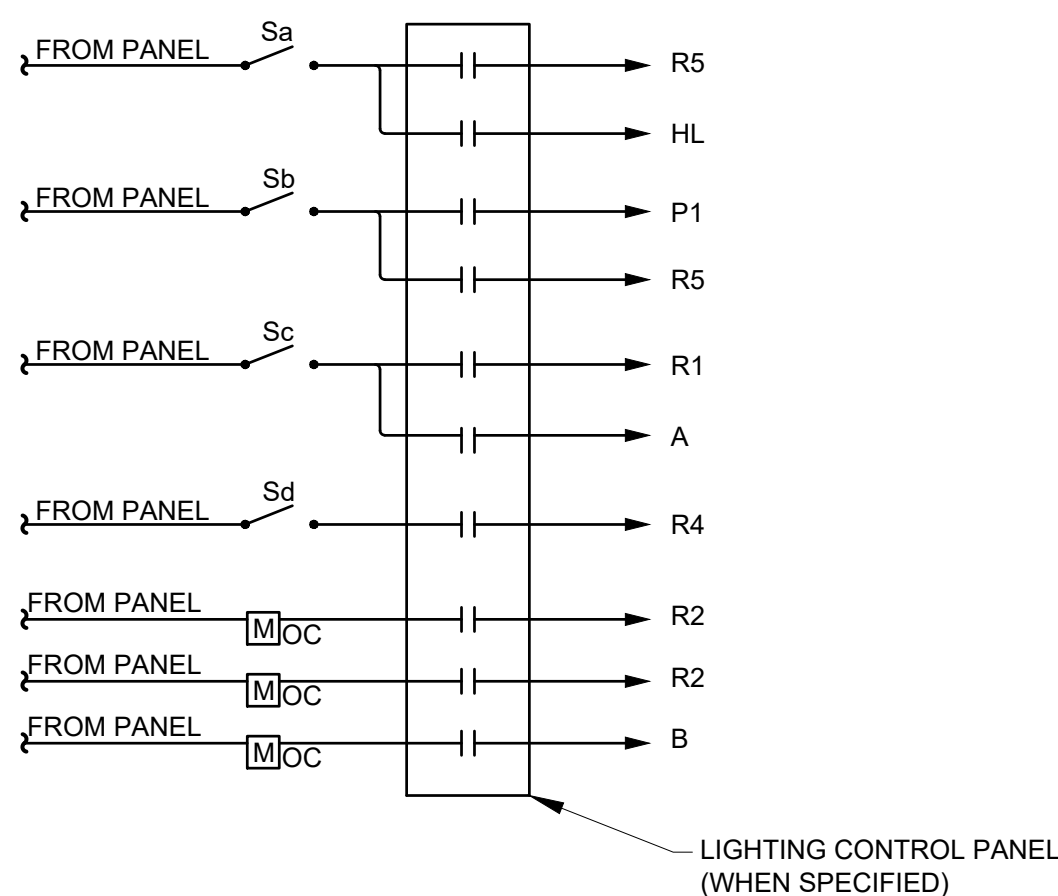
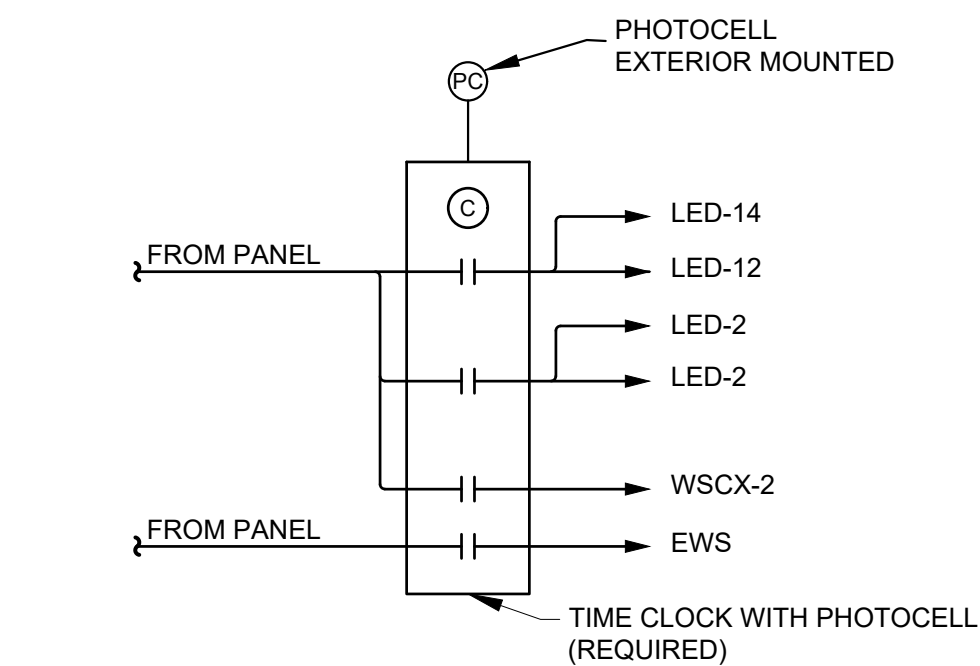
KEYED NOTES

- INSTALL SWITCH HEIGHT MOUNTED OCCUPANCY SENSOR, HUBBELL MODEL LHRS1, IN THE RESTROOMS AND OFFICE.
- PROVIDE OCCUPANCY SENSOR SWITCHES FOR WALK-IN REFRIGERATOR AND FREEZER. ENSURE SWITCHES ARE SUITABLE FOR TEMPERATURE OF SPACE.
- CIRCUIT EXTERIOR SIGNS THROUGH LIGHTING CONTROL PANEL. VERIFY QUANTITY AND LOCATION WITH ARCHITECTURAL DRAWINGS.
- CIRCUIT EXTERIOR CANOPY LIGHTS AND LED LIGHTS ABOVE THROUGH LIGHTING CONTROL PANEL.
- SPEAKER AND SOUND SYSTEM TO BE PROVIDED AND INSTALLED BY ELECTRICAL CONTRACTOR. LOCATE VOLUME CONTROL IN THE OFFICE. SEE ARCHITECTURAL CEILING PLAN FOR EXACT LOCATION AND CONTROL.
- PROVIDE CONTROL RELAY PANEL AS SPECIFIED BY THE LIGHTING VENDOR. PROVIDE AND INSTALL DIGITAL SWITCH(ES) AS REQUIRED.
- EXHAUST FAN SHALL BE CIRCUITED & CONTROLLED ALONG WITH THE LIGHT FIXTURES IN THE SAME ROOM.
- 100A, 24-POLE, 120/208V, 3-PHASE HOUSE PANEL "HP-1" WITH NEMA 3R ENCLOSURE.
- CONTROL RELAY PANEL. SEE LIGHTING PLAN FOR SCHEDULE AND CONTROL DETAIL DRAWINGS FOR ADDITIONAL INFORMATION

MUSIC SYSTEM NOTES

THE MUSIC SYSTEM IS A REQUIREMENT OF THE BRAND AND NO LONGER OPTIONAL. ARCHITECTS TO UPDATE ARCHITECTURAL DRAWINGS PER GUIDELINES DIRECTLY BELOW.

- MUSIC SYSTEM IS REQUIRED IN ALL NEW AND REMODEL STORES. ALL CEILING SPEAKERS TO BE FLUSH MOUNTED @ GYP. BOARD CLG. & ACT CLG. SPEAKERS @ OPEN CEILING TO BE MOUNTED ON LOWER CORD OF ROOF TRUSSES. ALL INTERIOR SPEAKERS TO MATCH SURFACE IT IS MOUNTED ON. ALL EXTERIOR SPEAKERS TO BE BLACK, WITH EXTERIOR GRADE CONSTRUCTION.
- MUSIC SYSTEM IS REQUIRED IN ALL NEW AND REMODEL STORES. MUSIC SYSTEM TO USE DBI APPROVED PROGRAMMING
- ALL CEILING SPEAKERS TO BE FLUSH MOUNTED WHITE. ALL EXTERIOR SPEAKERS TO BE BLACK, WITH EXTERIOR GRADE CONSTRUCTION.
- ONE SPEAKER IN EACH BATHROOM TO BE FLUSH MOUNTED WHITE.
- A MINIMUM OF TWO SPEAKERS IN THE SEATING AREA (NO SPEAKERS IN THE SERVICE AREA).
- A MINIMUM OF TWO SPEAKERS AT EXTERIOR SEATING AREAS WHERE APPLICABLE.
- SPEAKER AT EXTERIOR OF BUILDING ADJACENT TO ENTRY.
- PROVIDE AND INSTALL SEPARATE VOLUME CONTROLS FOR EACH AREA (RESTROOMS, SEATING AREA, EXTERIOR)
- HARDWARE TO BE INSTALLED IN THE OFFICE. FIELD VERIFY AND COORDINATE WITH FRANCHISE FOR THE EXACT LOCATION OF THE UNIT AND VOLUME CONTROLS.

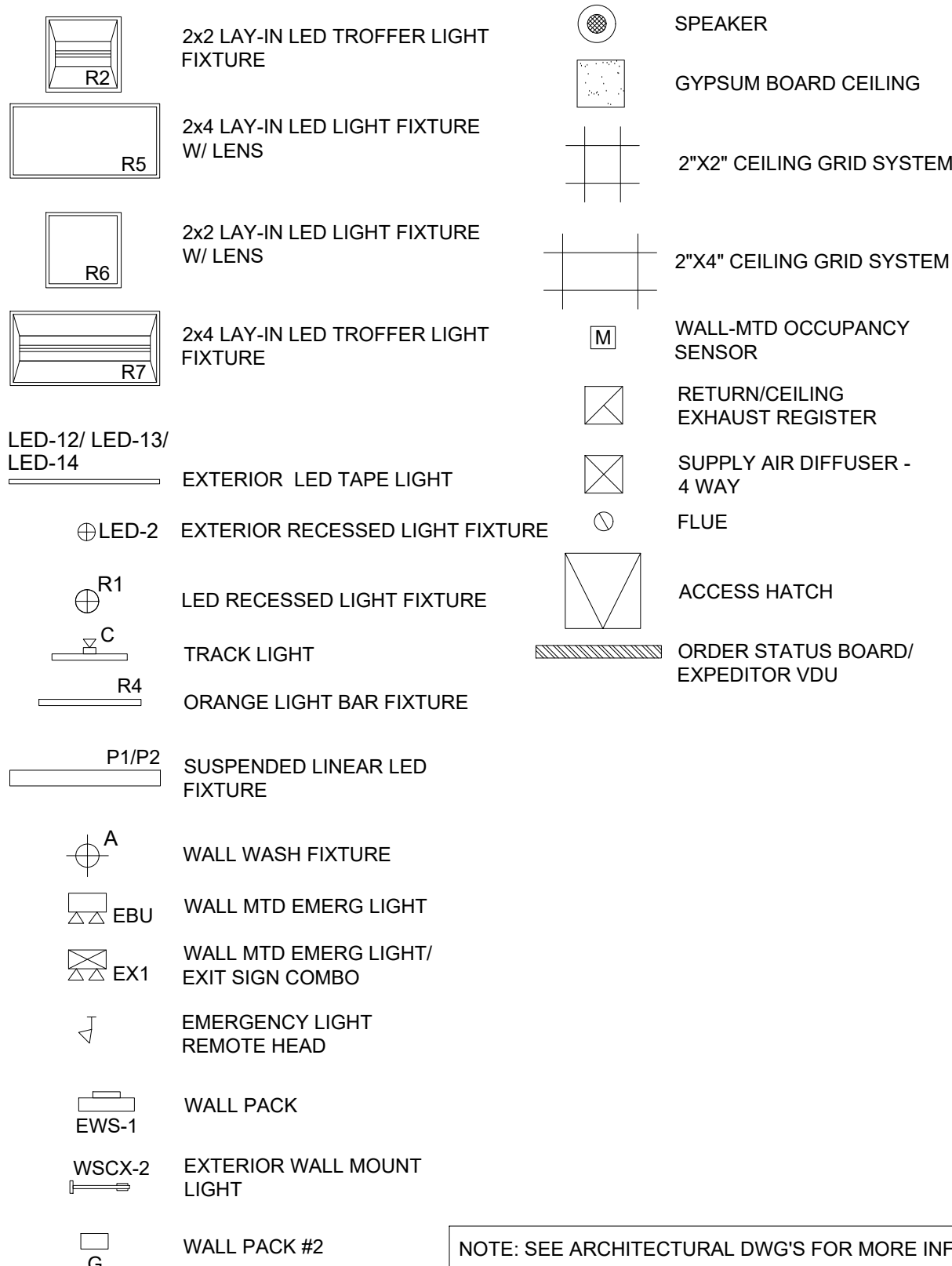


1 LIGHTING PLAN

SCALE: 1/4" = 1'-0"



CEILING LEGEND



NOTE: SEE ARCHITECTURAL DWG'S FOR MORE INFORMATION ON LIGHT FIXTURES.

CONTROL RELAY PANEL SCHEDULE

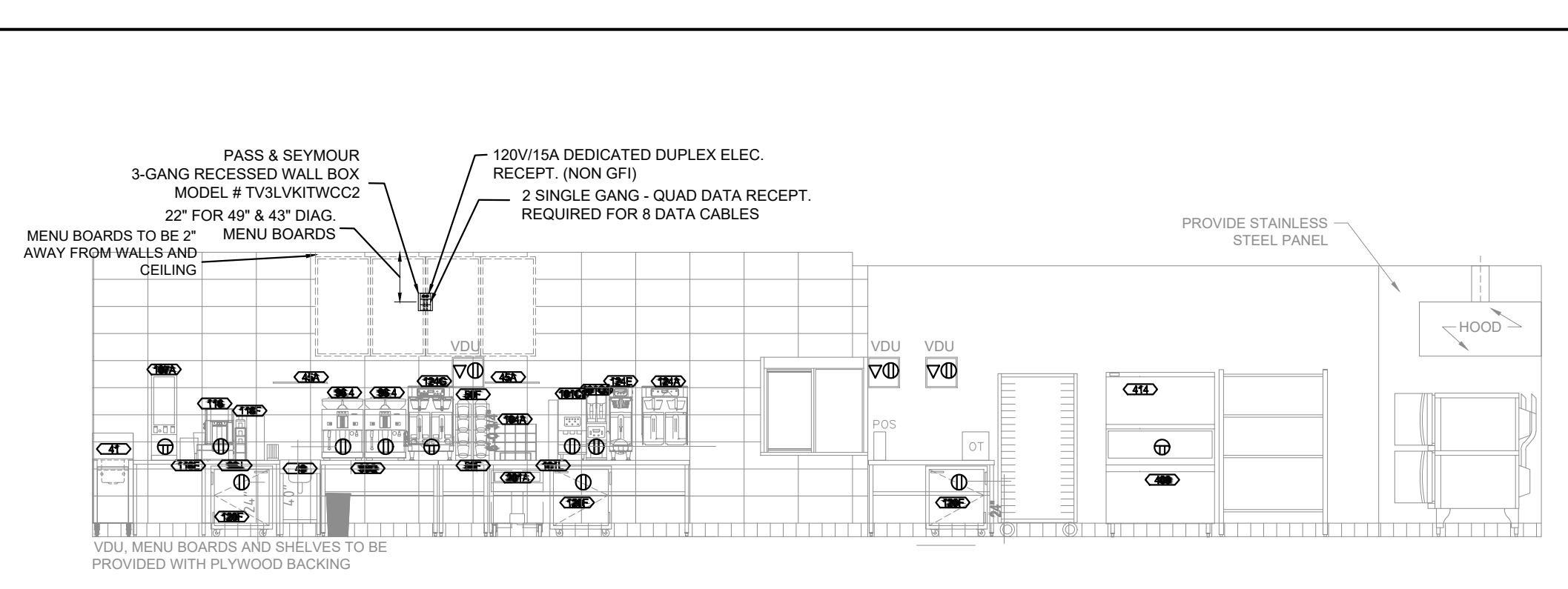
DESCRIPTION	FIXTURE TAG	OKT WATTS	CONTROL VIA	CIRCUIT #	RELAY #
EXTERIOR LIGHT FIXTURE USED ON TOP OF CHARCOAL BAND @ MONOLITH ONLY	LED 14	100W	TC:1	P:2	1
EXTERIOR LIGHT FIXTURE USED ON TOP OF ORANGE BAND @ CHARCOAL BAND	LED 12 OR LED 13	651W	TC:1	P:2	2
EXTERIOR LIGHT FIXTURE USED UNDER ORANGE BAND	LED 2	141W	TC:2	P:2	3
EXTERIOR LIGHT FIXTURE USED UNDER AWNING	LED 2	51W	TC:2	P:2	4
EXTERIOR GOOSE NECK USED TO WASH WALL	WSCX-2	150W	TC:3	P:2	5
EXTERIOR WALL PACKS	EWS	280W	TC:4	P:4	6
EIGHT FOOT FIXTURES USED IN HIGH CEILING AREAS	P1	680W	Sb	P:6	7
2X4 FIXTURE	R5	45W	Sb	P:6	8
CAN FIXTURES USED IN SERVICE AREA	R1	294W	Sc	P:6	9
FIXTURE USED ABOVE ART WORK	A	69W	Sc	P:6	10
ORANGE FINISHED FIXTURE USED ABOVE FRONTLINE	R4	76W	Sd	P:6	11
2X4 USED IN BACK OF HOUSE AREA	R5	405W	Sa	P:8	12
FIXTURE ABOVE SANDWICH STATION	HL	40W	Sa	P:8	13
FIXTURES USED WALK-IN COOLER AND FREEZER AREAS	B	120W	OCC SENSOR	P:8	14
2X2 USED IN RESTROOM	R2	96W	OCC SENSOR	P:8	15
2X2 USED IN OFFICE	R2	48W	OCC SENSOR	P:8	16

WHEN THE LIGHTING CONTROL IS SPECIFIED WITH DIMMING CAPABILITIES, THE SHARING OF NEUTRALS IS STRICTLY PROHIBITED.

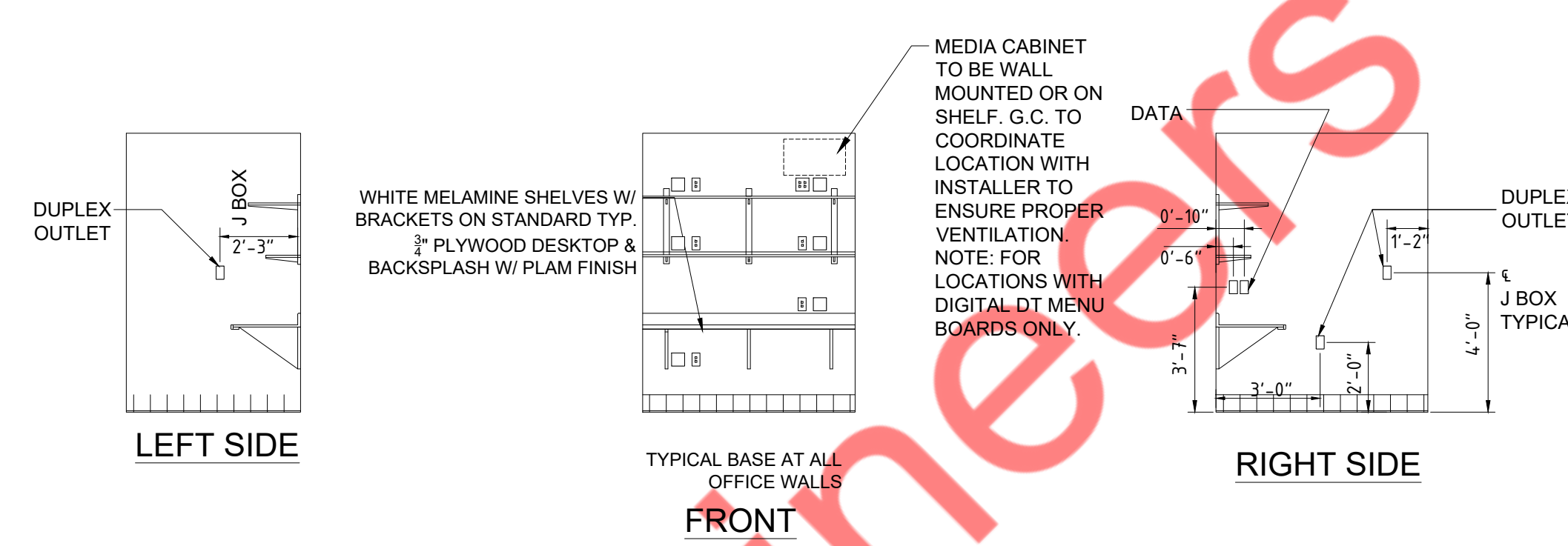


1 POWER PLAN
SCALE: 1/4" = 1'-0"

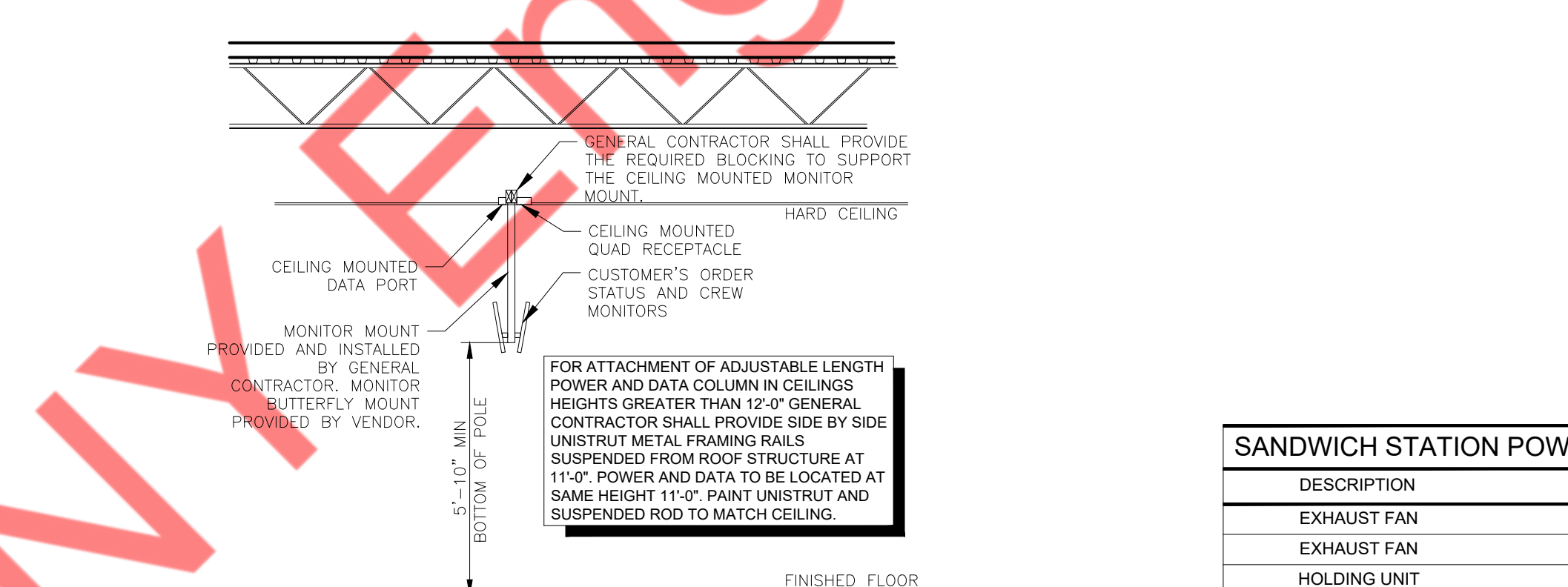
2 ROOF POWER PART PLAN
SCALE: 1/4" = 1'-0"



3 INTERIOR ELEVATION AT SERVICE AREA
SCALE: N.T.S.



4 OFFICE ELEVATIONS
SCALE: N.T.S.



5 VIDEO HANGING BRACKET
SCALE: N.T.S.

KEYED NOTES

- SEE POS AND COMMUNICATIONS. PLAN FOR FURTHER INFORMATION REGARDING POS AND UNDER COUNTER ELECTRICAL SERVICE.
- CONTRACTOR SHALL PROVIDE POWER AND NECESSARY WIRING FOR THE HOOD CONTROL PANEL. SEE THE CAPTIVE AIRE DRAWINGS FOR WIRING REQUIREMENTS.
- CONTROL RELAY PANEL. SEE LIGHTING PLAN FOR SCHEDULE AND CONTROL DETAIL DRAWINGS FOR ADDITIONAL INFORMATION.
- PROVIDE JUNCTION BOXES AT TOILETS, SINKS AND OPTIONAL URINAL IF ALTERNATE "HANDS FREE" TOILET FIXTURES ARE BEING PROVIDED.
- REFER TO POS COMMUNICATIONS FLOOR PLAN FOR LOCATIONS AND ELEVATIONS OF OFFICE RECEPTACLES.
- SINGLE POINT CONNECTION FOR WALK-IN FREEZER AND REFRIGERATOR. THE CONTRACTOR SHALL CONFIRM ELECTRICAL REQUIREMENTS AND MEANS OF DISCONNECT OF THE ROOF MOUNTED CONDENSING UNITS AND EVAPORATOR UNITS LOCATED WITHIN THE BOXES. ALSO, PROVIDE ELECTRICAL CONNECTION OF DOOR HEATER, CONDENSATE DRAIN AND HEAT TRACE TAPE.
- MOUNT RECEPTACLES FOR FRONTLINE BAKERY DISPLAY CASES IN MILLWORK AS REQUIRED. PROVIDE FLEXIBLE CONDUIT WHIP FOR FINAL INSTALLATION AFTER MILLWORK IS INSTALLED. COORDINATE AS REQUIRED.
- JUNCTION BOX SHALL BE CIRCUITED AND CONTROLLED WITH LIGHTING IN THIS AREA.
- ELECTRICAL CONTRACTOR SHALL PROVIDE JUNCTION BOX FOR THE EXTERIOR SIGNAGE. INSTALL THE JUNCTION BOX WITHIN THE BUILDING. THE SIGNS SHOULD BE SUPPLIED WITH WHIPS FOR FINAL CONNECTION TO THIS JUNCTION BOX. COORDINATE WITH THE SIGN VENDOR ON THE QUANTITY AND LOCATION OF THE REQUIRED JUNCTION BOXES. THE CONTRACTOR SHALL PROPERLY SIZE THE JUNCTION BOX BASED ON THE QUANTITY OF CONNECTIONS REQUIRED. VERIFY LOCATION WITH ARCHITECTURAL ELEVATION ON SHEET A5.0 AND SIGN VENDOR PRIOR TO INSTALLING. ALL SIGNS SHALL BE CONTROLLED VIA TIME CLOCK.
- ELECTRICAL OUTLETS SHALL BE FLOOR MOUNTED.
- (1) 3 1/2" CONDUIT WITH PULL STRING FOR 400 AMPS SERVICE FOR THE TENANT SPACE. ELECTRICAL CONTRACTOR TO COORDINATE EXACT LOCATION WITH ARCHITECT/OWNER.
- 100A, 24-POLE, 120/208V, 3-PHASE HOUSE PANEL "HP-1" WITH NEMA 3R ENCLOSURE.

COORDINATE WITH ARCHITECT TO CONFIRM COLOR OF RECEPTACLES TO ORDERING.

RECEPTACLES TAGGED WITH "USB" IN THE SALES & SEATING AREAS SHALL BE HUBBELL #USB15X2W (WHITE) / NP26W (WHITE) COMBO USB CHARGER WITH TAMPER-RESISTANT RECEPTACLE.

SEATING AREA RECEPTACLES SHALL BE WHITE WITH WHITE COVER PLATE AND ARE TO BE MOUNTED AT 18" AFF.

POWER DEVICE LEGEND

- DUPLEX RECEPTACLE, 20A, 120V
- QUAD RECEPTACLE, 20A, 120V
- SPECIAL RECEPTACLE, VOLTAGE AND AMPERAGE BASED ON CONNECTED CIRCUIT
- JUNCTION BOX
- DISCONNECT SWITCH - FUSED OR UNFUSED

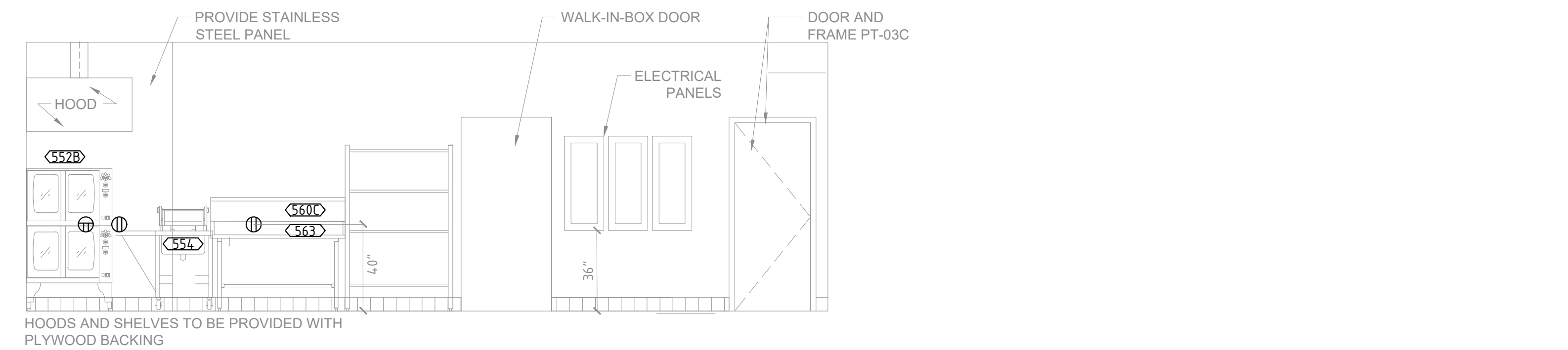
SANDWICH STATION POWER SCHEDULE

DESCRIPTION	QTY	VOLTS	AMPS	LOAD	PHASE	CORD	RECEPTACLE	MTG	REMARKS
EXHAUST FAN	**	**	**	**	**	NO		**	JBOX @ CEILING/ROOF LOCATION
EXHAUST FAN	**	**	**	**	**	NO		**	JBOX @ CEILING/ROOF LOCATION
HOLDING UNIT	**	115V	15	15A1P	1Ø	YES	NEMA 5-15R	**	
DUAL LANE TOASTER (244)	2	208V	23.8	30A2P	1Ø	YES	NEMA 6-30R	**	
TORNADO OVEN (215)	2	208V	30	30A2P	1Ø	YES	NEMA 6-30R	**	
TORNADO OVEN (215)	2	208V	30	30A2P	1Ø	YES	NEMA 6-30R	**	
LOW VOLTAGE EQUIPMENT	QTY	VOLTS	AMPS	LOAD	PHASE	TRANS	RECEPTACLE	MTG	REMARKS
VDU	**	200V	1.5	20A1P	NO	N/A		**	*(4) LOCATED ABOVE CLG. (1) PLUGS INTO ITEM #5
VDU CONTROLLER	**	100V	1.0	20A1P	YES	RJ45		**	*(4) LOCATED ABOVE CLG. (1) PLUGS INTO ITEM #5
PRINTER	**	120V						**	**PLUGS INTO ITEM #5

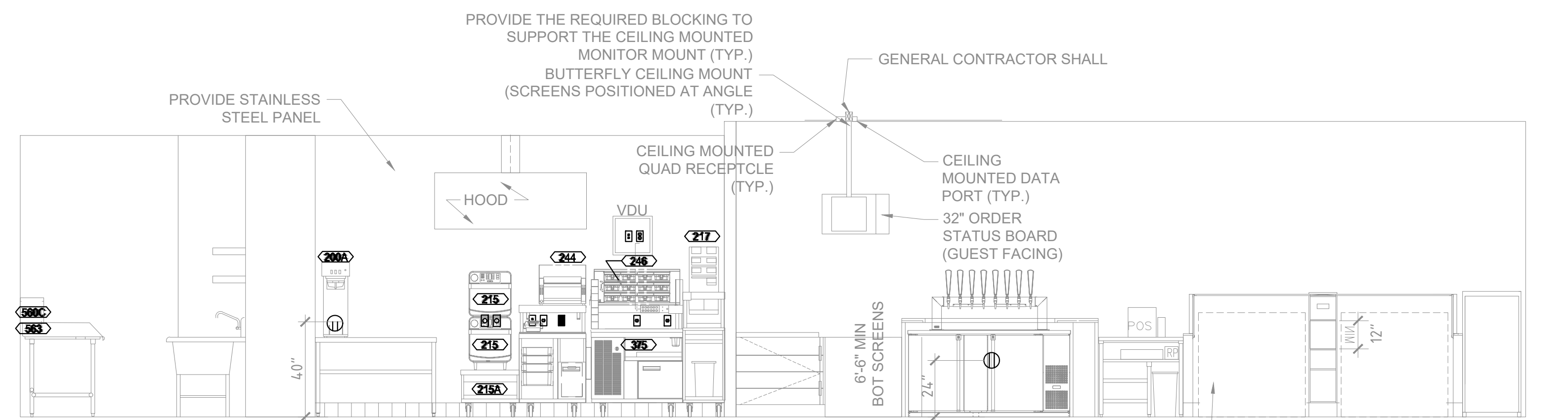
POWER SCHEDULE NOTES:

- MODIFY EXISTING ELECTRICAL PANELS TO ACCOMMODATE EQUIPMENT CIRCUITS AS REQD.
- THE ELECTRICAL CONTRACTOR IS REQUIRED TO VERIFY ALL ELECTRICAL REQUIREMENTS OF EQUIPMENT. COORD FINAL SPECS W/ DUNKIN BRANDS.
- ALL RECEPTACLE MOUNTING HEIGHTS REFER TO CENTER OF RECEPTACLE.

6 EQUIPMENT SCHEDULE
SCALE: N.T.S.



7 KITCHEN PREP
SCALE: N.T.S.



8 DUNKIN SERVICE/KITCHEN PREP/STORAGE
SCALE: N.T.S.

POS COMMUNICATION EQUIPMENT SCHEDULE

QTY	DESCRIPTION	LOCATION	VOLTS	LOAD AMPS	CB	TRANS FORMER	LOVO TERM	REMARKS	
POS EQUIPMENT									
1	4	POINT OF SALES TERMINAL (POS)	(2) FRONT COUNTER (1) D/T (1) D/T OT	100-120V	2.0	20A/1P	NO	RJ45	SHARES CIRCUIT WITH POS ITEMS 2 & 12
2	3	RECEIPT PRINTER	(2) FRONT COUNTER (1) D/T	100-240V	2.0	20A/1P	YES	RJ45	SHARE CIRCUIT WITH POS ITEMS 1 & 12
3	5	PREP PRINTER	(1) COFF STATION (1) BEVERAGE STATION (2) SANDWICH (1) OTGO PRINTER	24/34V	1.2	20A/1P	YES	RJ45	
4	4	VDU	(1) BEVERAGE STA (1) SANDWICH (1) EXPEDITER @ D/T	100-240V	1.5	20A/1P	NO	N/A	SHARES CIRCUIT
5	4	VDU CONTROLLER (PC BASED)	(1) EXPEDITER @ HAND OFF	100-120V	1.0	20A/1P	YES	RJ45	
6	1	POS NETWORK HUB/ SWITCH	POS COFFEE FRONT CHASE	100-120V	0.5	20A/1P	YES	RJ45	SHARES CIRCUIT WITH POS ITEMS 1, 2 & 12
7	1	PC SITE CONTROLLER EXTERNAL	OFFICE	100-120V	4.0	20A/1P	NO	RJ45	
7a	1	PC SITE CONTROLLER INTERNAL	OFFICE	100-120V	4.0	20A/1P	NO	RJ45	
8	1	PRINTER/FAX/COPIER (BOH)	OFFICE	100-120V	8.2	20A/1P	NO	N/A	
9	3	SCANNER	(2) FRONT COUNTER (1) D/T				NO	RJ45	CONNECTED TO POS UNITS
10	3	PRICE CONFIRMATION DISPLAY	MOUNT OUTSIDE @ D/T WINDOW & BEHIND FRONT POS UNITS				NO	RJ45	CONNECTED TO D/T POS UNIT
11	0	NOT USED							
12	3	CASH DRAWER	UNDER CTR @ FRONT & D/T	N/A	N/A		NO	RJ45	SHARES CIRCUIT WITH POS ITEMS 1 & 2
13	0	NOT USED		N/A	N/A		NO	RJ45	VERIFY ALL ELECT & POS REQTS w/ MANUF
14	3	PAYMENT TERMINAL	(2) FRONT COUNTER (1) D/T	100-240V	0.5	20A/1P	NO	RJ45	VERIFY ALL ELECT & POS REQTS w/ MANUF
14a	3	VERIFONE SWITCH	(2) FRONT COUNTER (1) D/T						CONNECTED TO POS (1)
30	1	ORDER STATUS BOARD	(1) FRONT COUNTER						VERIFY ALL ELECT & POS REQTS w/ MANUF
OTHER COMMUNICATION DEVICES									
15	1	DRIVE THROUGH (DT) TIMER CONSOLE	OFFICE	120V	N/A		NO	RS232	MUST BE WITHIN 60FT OF DISPLAY
16	1	DT TIMER VDU DISPLAY		LOW VOLT	N/A		NO		
PHONE & DATA LINES									
18	0	SPARE	OFFICE	LOW VOLT	N/A		N/A	RJ45	
19A	0	SPARE	OFFICE	LOW VOLT	N/A		N/A	RJ45	
20	1	FAX LINE	OFFICE	LOW VOLT	N/A		N/A	RJ45	FAX LINE FOR OFFICE
21	1	PHONE LINE	OFFICE	LOW VOLT	N/A		N/A	RJ45	PHONE LINE FOR OFFICE
22	0	NOT USED							
23	1	HIGH SPEED INTERNET LINE (MNS)	OFFICE	LOW VOLT	N/A		N/A	RJ45	FOR SITE CONTROLLER & BOH PC
24	1	SYSTEM SECURITY DVR	SECURITY SYSTEM	LOW VOLT	N/A		N/A	RJ45	PLUGS INTO ROUTER PORT#2
25	8	DIGITAL MENU BOARD	OFFICE/SERVICE AREA	LOW VOLT	N/A		N/A	RJ45	PLUGS INTO ROUTER PORT#4
26	1	WIFI	OFFICE	LOW VOLT	N/A		N/A	RJ45	PLUGS INTO ROUTER PORT#5
26a	0	SECONDARY WIFI ACCESS POINT (OPT)	OFFICE	LOW VOLT	N/A		N/A	RJ45	PLUGS INTO ROUTER
27	1	OTT VOIP (PHONE)	OFFICE	LOW VOLT	N/A		N/A	RJ45	PLUGS INTO ROUTER
MUSIC SYSTEM									
28	1	MUSIC PLAYER	OFFICE						
29	0	NOT USED							
WORKSTATION									
31	1	MANAGER'S WORKSTATION	OFFICE						
32	0	MANAGER'S WORKSTATION (OPT)							
FIREWALL									
33	1	FIREWALL	OFFICE	LOW VOLT	N/A		N/A	RJ45	
34	1	BROADBAND MODEM	OFFICE	LOW VOLT	N/A		N/A	RJ45	
35		TEMPORARY WIRELESS BROADBAND DIAL-UP DATA SOLUTION	OFFICE						
36		NOT USED							
37		NOT USED							
SWITCHES									
38	1	SWITCH	OFFICE						
39	1	DD UTILITY SWITCH (OPT)	OFFICE						
40	1	DVR NETWORK SWITCH	OFFICE						
41	1	DIGITAL MENU BOARD SWITCH	OFFICE						
42	1	KIOSK SWITCH	OFFICE						
43									
44									
MENU BOARD									
45	4	INT DIGITAL MENU BOARDS							
46	2	EXT DIGITAL MENU BOARDS	EXTERIOR DRIVE THRU						
47	0	DRIVE PREVIEW BOARD	EXTERIOR DRIVE THRU						
48	1	ORDER CONFIRMATION BOARD	EXTERIOR DRIVE THRU						
49	0	NOT USED							

DIDGITAL MENU BOARD RESPONSIBILITIES

- GC POWER/DATA RESPONSIBILITY
- EC TO RUN DEDICATED CONDUIT FROM POWER PANEL TO JUNCTION BOX ON BACK SIDE OF MENU BOARD FASCIA AT CENTER LINE OF POS
 - EC TO RUN CONDUIT WITH J-BOX FROM BACK SIDE OF MENU BOARD FASCIA AT CENTERLINE OF POS TO OFFICE

- DMB VENDOR POWER/DATA RESPONSIBILITY
- CUT HOLE IN MENU BOARD FASCIA FOR POWER/DATA STACK
 - IN STALL POWER/DATA STACK IN FASCIA
 - RUN ELECTRICAL CONDUCTOR WIRE FROM MENU BOARD FASCIA TO ELECTRICAL PANEL
 - MAKE FINAL ELECTRICAL CONNECTION AT POWER/ DATA STACK
 - MAKE FINAL ELECTRICAL CONNECTION TO CIRCUIT AT POWER PANEL
 - RUN CAT-5E CABLES AND TERMINATE ENDS AT MENU BOARD FASCIA POWER/DATA STACK AND IN OFFICE

*PRIOR TO BIDDING OR PERFORMING WORK GC TO COORDINATE WITH AUTHORITY HAVING JURISDICTION (AHU). AHU MAY REQUIRE FULL WIRE PREP BY EC. GC TO ALERT CM, FEE AND DMB INSTALLER IF EC MUST PERFORM ALL ELECTRICAL INSTALL WORK.

CONDUIT NOTES

- DMB: PROVIDE (8) CAT 5 WIRE PULLS FROM (2) QUAD DATA OUTLETS IN MENU BOARD SOFFIT TO (2) QUAD DATA OUTLETS IN OFFICE WALL
- 2 CONDUITS MIN SHALL BE USED BETWEEN OFFICE & OTHER PARTS OF THE STORE
1 CONDUIT FOR POS WIRING ONLY
1 CONDUIT FOR NON-POS ITEMS

KIOSK NOTES

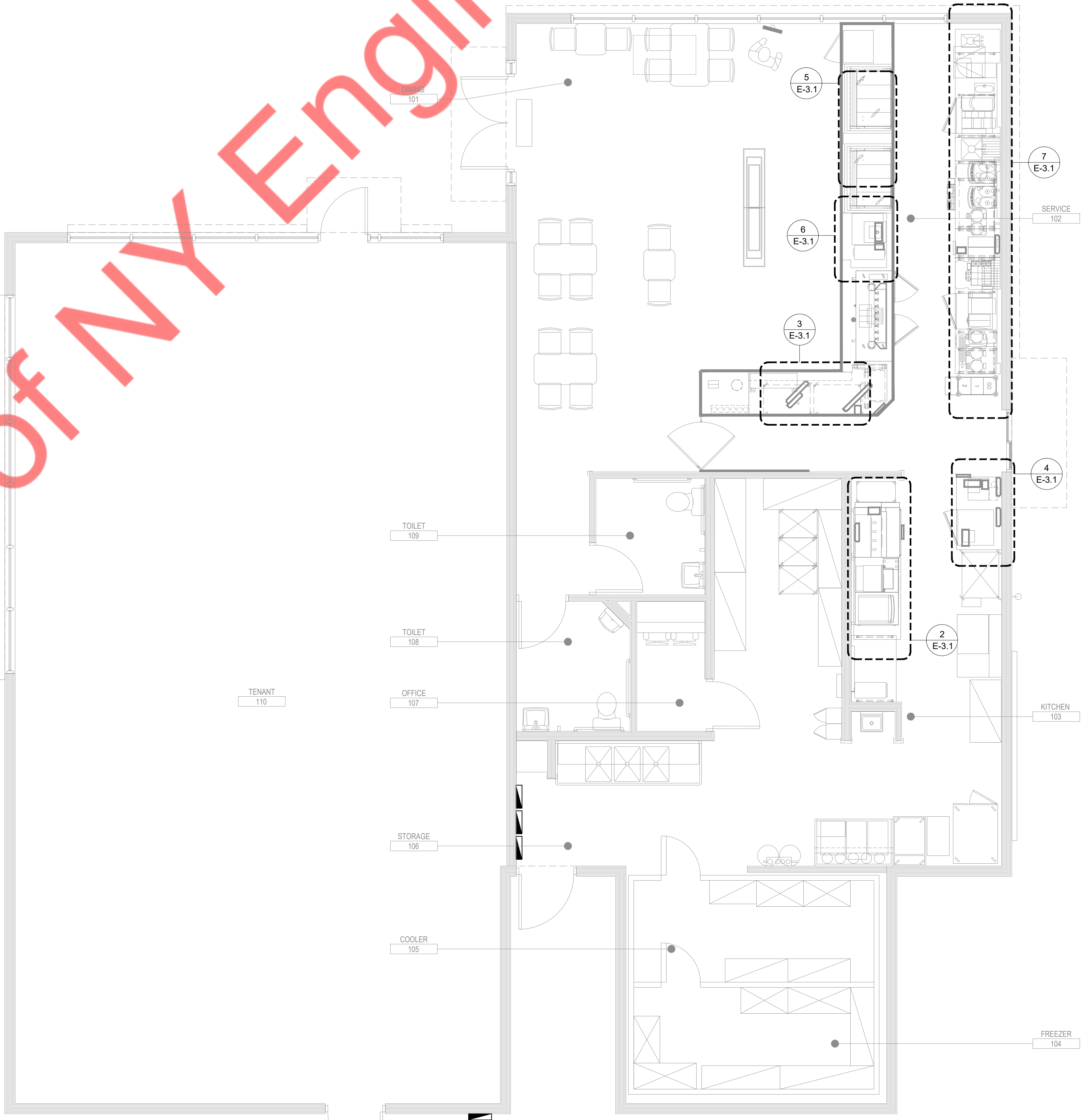
- G.C. TO PROVIDE A POWER / POS STUB UP FROM FLOOR OR A UNISTRUT RAIL SUSPENDED FROM ROOF STRUCTURE @ 10'-6" A.F.F. FOR ELECTRICAL/DATA CONNECTIONS AT ORDER KIOSKS.
- 20A CIRCUIT & (3) CAT-6 DATA CABLES
EA - ALL WIRING & FINAL LOC'NS TBD IN FIELD w/ FRANCHISEE & MANUF REQUIREMENTS.
- PROVIDE WIRING FROM KIOSK TO FRONT LINE POS AREA FOR REMOTE ASSISTANCE w/ LIGHT AT POS UNIT - CONFIRM ALL REQUIREMENTS w/ MANUF.

POS LEGENDS

POS	POINT OF SALES TERMINAL	CAM	SECURITY SYSTEM CAMERA
VDU	VIDEO DISPLAY UNIT	PCD	PRICE CONFIRMATION DISPLAY
R	ROUTER	PCD	ORDER STATUS BOARD
SC	SITE CONTROL (SELF-MOUNTING) RADIANT ONLY	KIOSK SW	KIOSK SWITCH
RP	RECEIPT PRINTER	DMB SW	DIGITAL MENU BOARD SWITCH
PP	PREP PRINTER	DMB	DIGITAL MENU BOARD
FAX	FAX	EXT DMB	DRIVE THRU EXTERIOR DIGITAL MENU BOARD
BOH PC	BACK-OF-HOUSE PC	TEMP M	TEMP WIRELESS DIAL UP
UPS	UPS	OCB	DRIVE THRU ORDER CONFIRMATION BOARD
M	MODEM	DPB	DRIVE THRU DIGITAL PREVIEW BOARD
SW	SWITCH	DPB	DRIVE THRU DIGITAL PREVIEW BOARD
OT	ORDER TAKER TERMINAL	OTT VOIP	OTT VOICE OVER-IP VOIP (PHONE)
DTC	DRIVE THROUGH CONSOLE		
DTT	DRIVE THROUGH TIMER	▬	BUMP BAR
VS	VERIFONE SWITCH	▮	VIDEO DISPLAY UNIT
PT	PAYMENT TERMINAL	▮	PRINTER
CASH DR	CASH DRAWER	▮	POINT OF SALE TERMINAL
CD	COIN DISPENSER	▮	SCANNER
MWS	MANAGER'S WORKSTATION	◇	POS EQUIPMENT TAG
DVR	DVR SECURITY SYSTEM	⊕	DUPLEX RECEPTACLE
		△	DATA OUTLET, RJ45

GENERAL NOTES

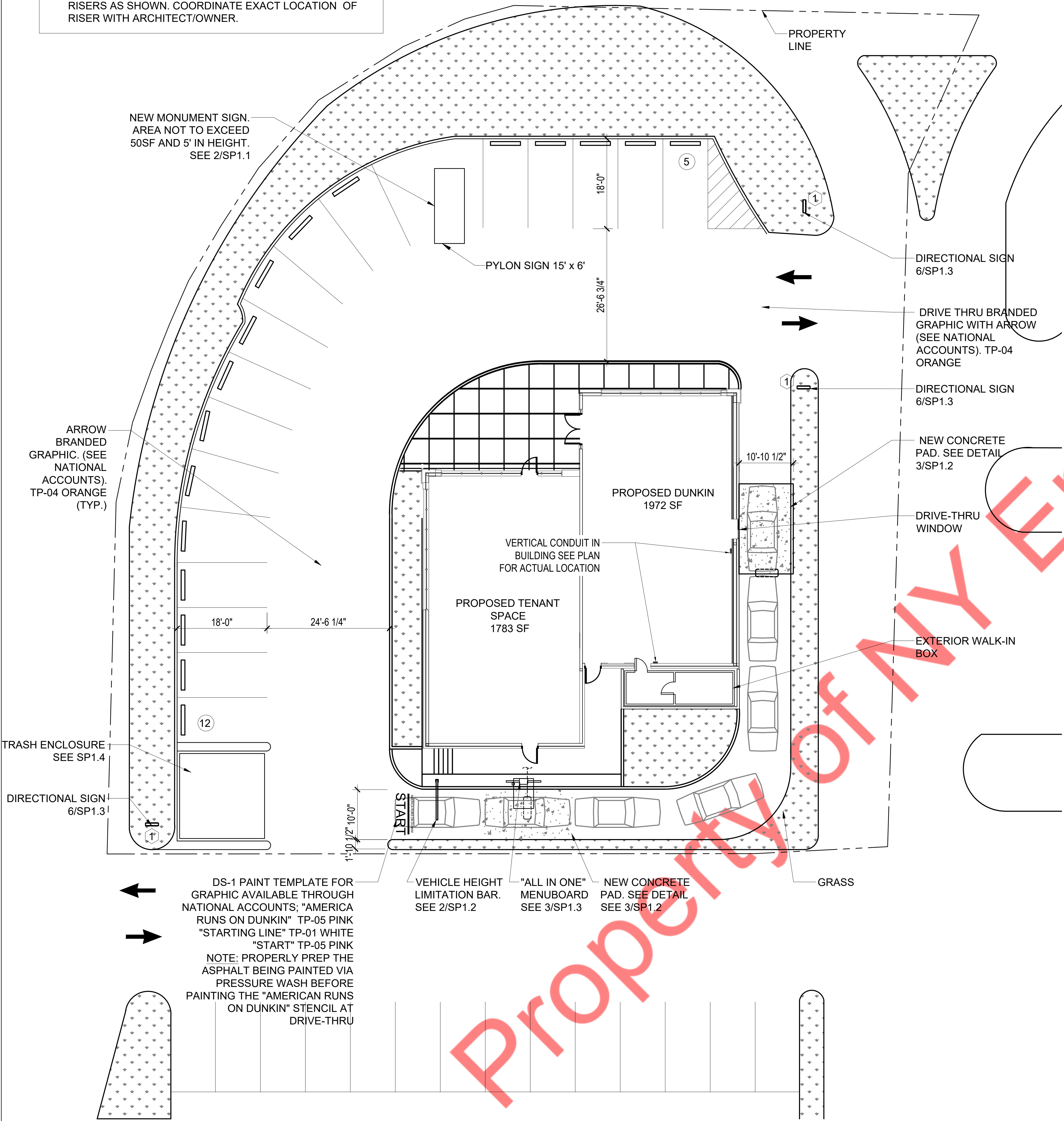
- A. REFER TO HTTP://EXTRANET.DUNKINBRANDS.COM FOR A LISTING OF APPROVED POS VENDORS BY CONCEPT.
- B. FINAL POS DRAWINGS NEED TO BE PROVIDED TO POS VENDOR THAT IS SELECTED.
- C. POS VENDORS REQUIRE DEDICATED ISOLATED GROUNDED (DIG) OUTLETS ON A 20 AMP CIRCUIT DEDICATED ONLY TO POS EQUIPMENT. 60HZ, 120V±10%. ALL POS TERMINALS AND VIDEO DISPLAY DEVICES REQUIRE A DUPLEX OUTLET. THE BACK OFFICE CONTROLLER REQUIRES A QUAD OUTLET. THE NETWORK SWITCH REQUIRES A DUPLEX. IF FEDERAL, STATE, AND LOCAL WIRING CODES DO NOT MEET THIS REQUIREMENT, CONTACT THE POS VENDOR FOR INFORMATION ON ADDITIONAL EQUIPMENT THAT CAN BE PURCHASED TO MEET THIS REQUIREMENT. IF THIS REQUIREMENT IS NOT MET, THE POS SYSTEM WARRANTY IS INVALID.
- D. ALL POWER INDICATED ON THIS PLAN MUST HAVE A THIRD WIRE, ISOLATED GROUND, AND BE TERMINATED WITHIN (4) FEET OF THE DEVICE.
- E. IG-5362 RECEPTACLES MUST BE USED FOR ALL POS UNITS. VDU UNITS AND SITE CONTROLLER UNIT (IN OFFICE). LABEL RECEPTACLES "POS ONLY".
- F. ALL LOW VOLTAGE WIRE SHALL BE CATEGORY 5e UNLESS OTHER WISE INDICATED.
- G. ALL LOW VOLTAGE CABLE TERMINATIONS SHALL BE BY THE ELECTRICAL CONTRACOR
- H. LOW VOLTAGE CABLE RUN IN 1/2" CONDUIT FOR POS EQUIPMENT ONLY, AND MUST BE TERMINATED WITH RJ45 JACKS. ALL POS EQUIPMENT LINES TERMINATE AT THE FRONT COUNTER CHASE.
- I. A 12" MINIMUM SEPARATION MUST BE MAINTAINED BETWEEN LOW VOLTAGE WIRES AND POWER WIRING (TO AVOID ELECTRICAL INTERFERENCE).
- J. BRAND REQUIREMENTS DICTATE THAT A MINIMUM OF THREE CONDUITS BE USED FOR DATA LINES BETWEEN THE OFFICE AND OTHER PARTS OF THE STORE. ONE CONDUIT IS TO BE DEDICATED TO POS WIRING, ONE FOR DIGITAL MENUBOARD DATA LINES, AND ANOTHER FOR NON-POS ITEMS (I.E. SECURITY CAMERAS, DT TIMERS, HEAD SET WIRING).
- K. EXACT # OF RECEPTACLES ON OFFICE MUST BE COORDINATED ON A PROJECT-BY-PROJECT BASIS IN TERMS OF EQUIPMENT LOCATED IN THE OFFICE
- L. ALL CEILING MOUNTED VDUs TO BE SUSPENDED FROM UNISTRUT BY THREADED ROD W/ WHITE PVC SLEEVE. CONNECT UNISTRUT TO ROOF STRUCTURE. VDU BY POS VENDOR. UNITSTRUT & THREADED ROD BY G.C. UNISTRUT TO SUPPORT MINIMUM 50 LB. WEIGHT
- M. VDU MOUNTING HEIGHTS (TO BOTTOM OF MONITOR) ARE AS FOLLOWS:
a. SANDWICH STATION - 68" A.F.F.
b. DRIVE THRU - 61" A.F.F.
- N. DIGITAL MENUBOARD PREP WIRING:
a. PROVIDE BOX, PLATE AND 1" DIA. CONDUIT FROM FROM (2) QUAD DATA OUTLETS IN MENUBOARD SOFFIT TO (2) QUAD DATA OUTLETS IN OFFICE WALL. EITHER (A) PROVIDE PULL STRING IN EACH CONDUIT (CAT 5 CABLING AND FINAL DATA CONNECTIONS BY DMB VENDOR), OR (B) PROVIDE ALL CAT 5 CABLING AND FINAL CONNECTIONS TO DATA PLATES/BOXES- COORD. W/ FEE



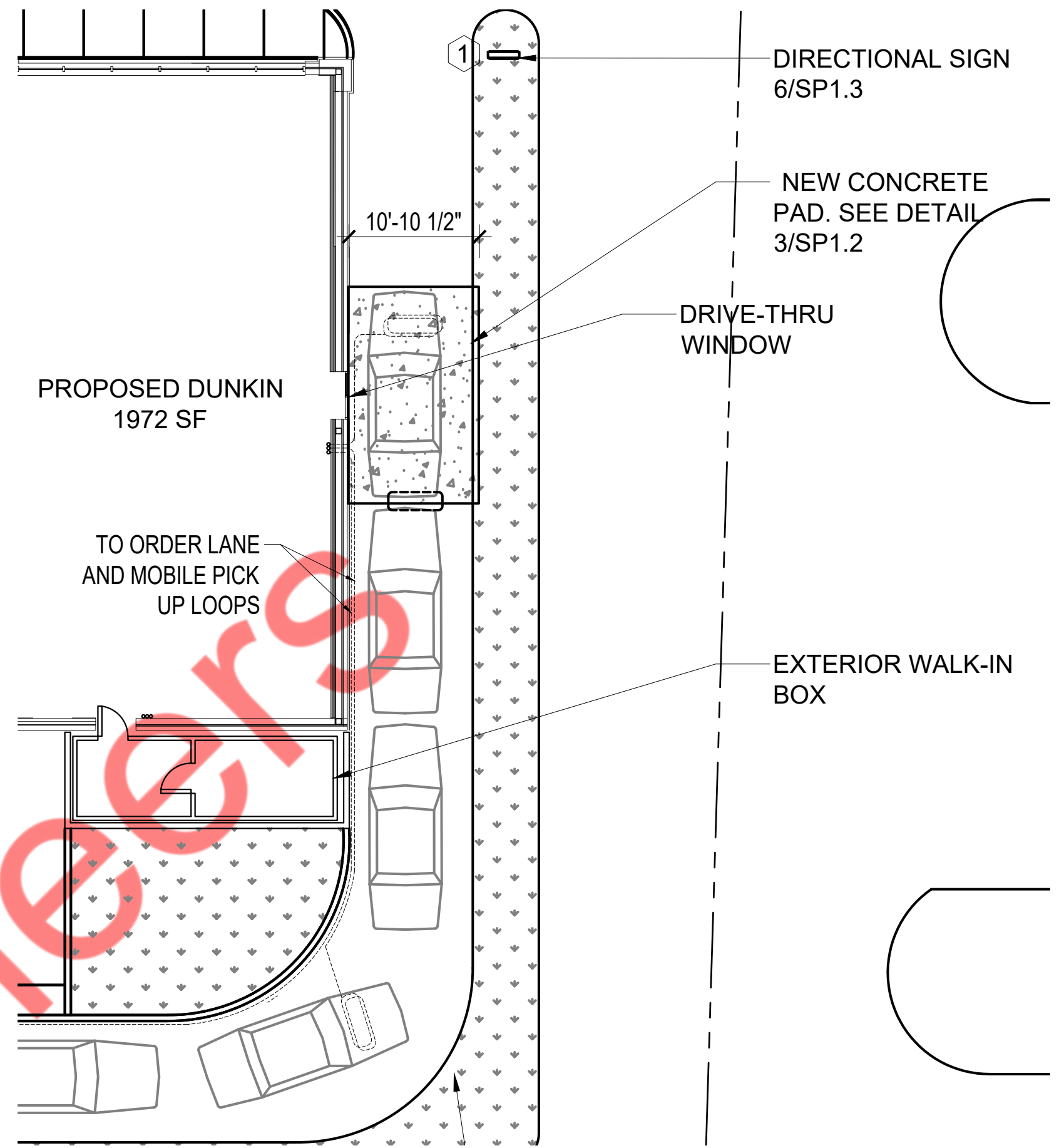
1 KEY PLAN
SCALE: 1/4" = 1'-0"

1 ELECTRICAL CONTRACTOR SHALL CONNECT ALL THE SITE LIGHTING AND DIRECTIONAL SIGNS TO THE "PANEL-P" LOCATED INSIDE THE BUILDING THROUGH VERTICAL RISERS AS SHOWN. COORDINATE EXACT LOCATION OF RISER WITH ARCHITECT/OWNER.

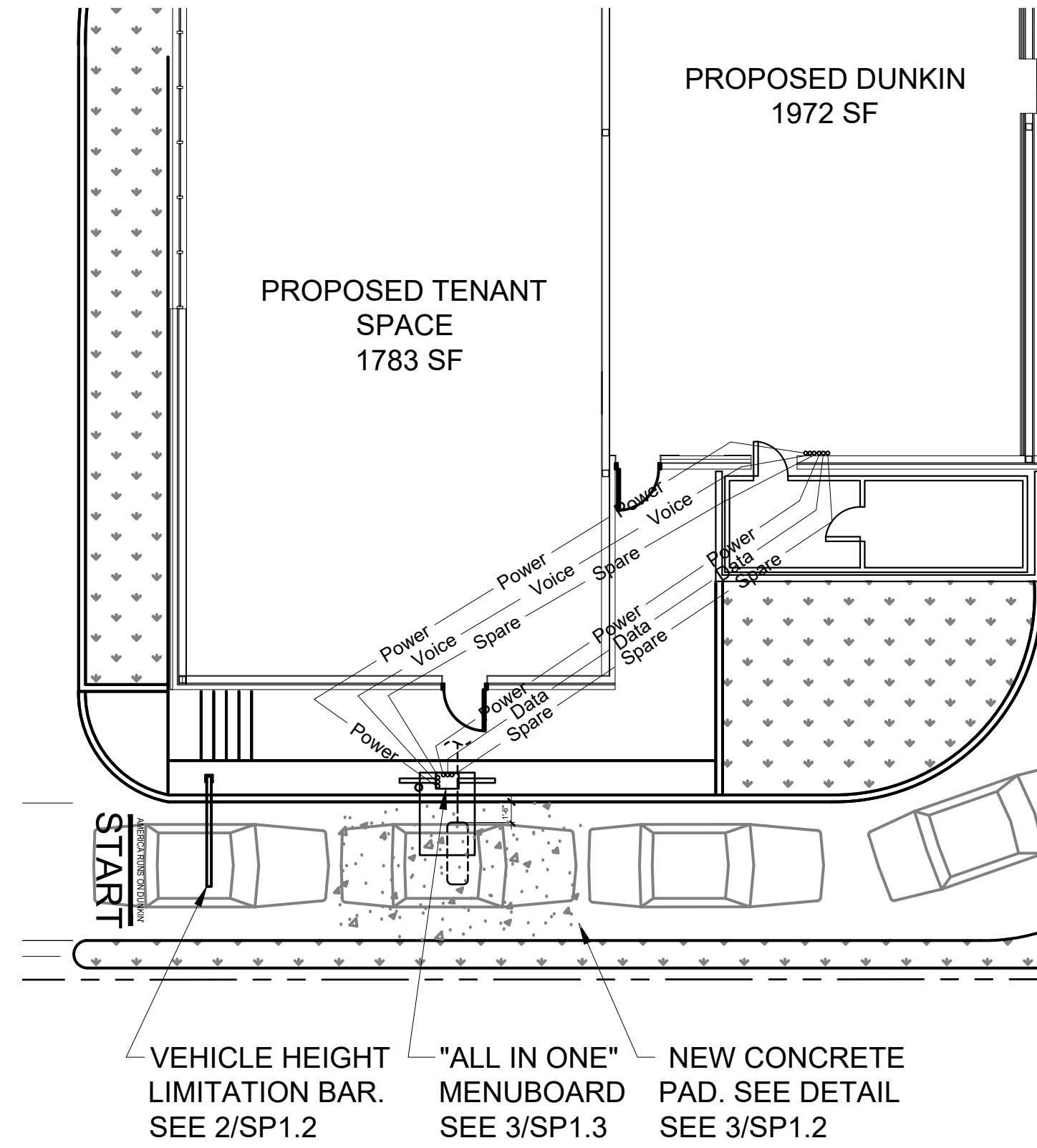
BIG BEND ROAD



1 ELECTRICAL SITE PLAN
SCALE: 1" = 10'-0"



2 DRIVE THRU PICKUP AND FAST FORWARD WINDOW DETAIL
SCALE: 1" = 10'-0"



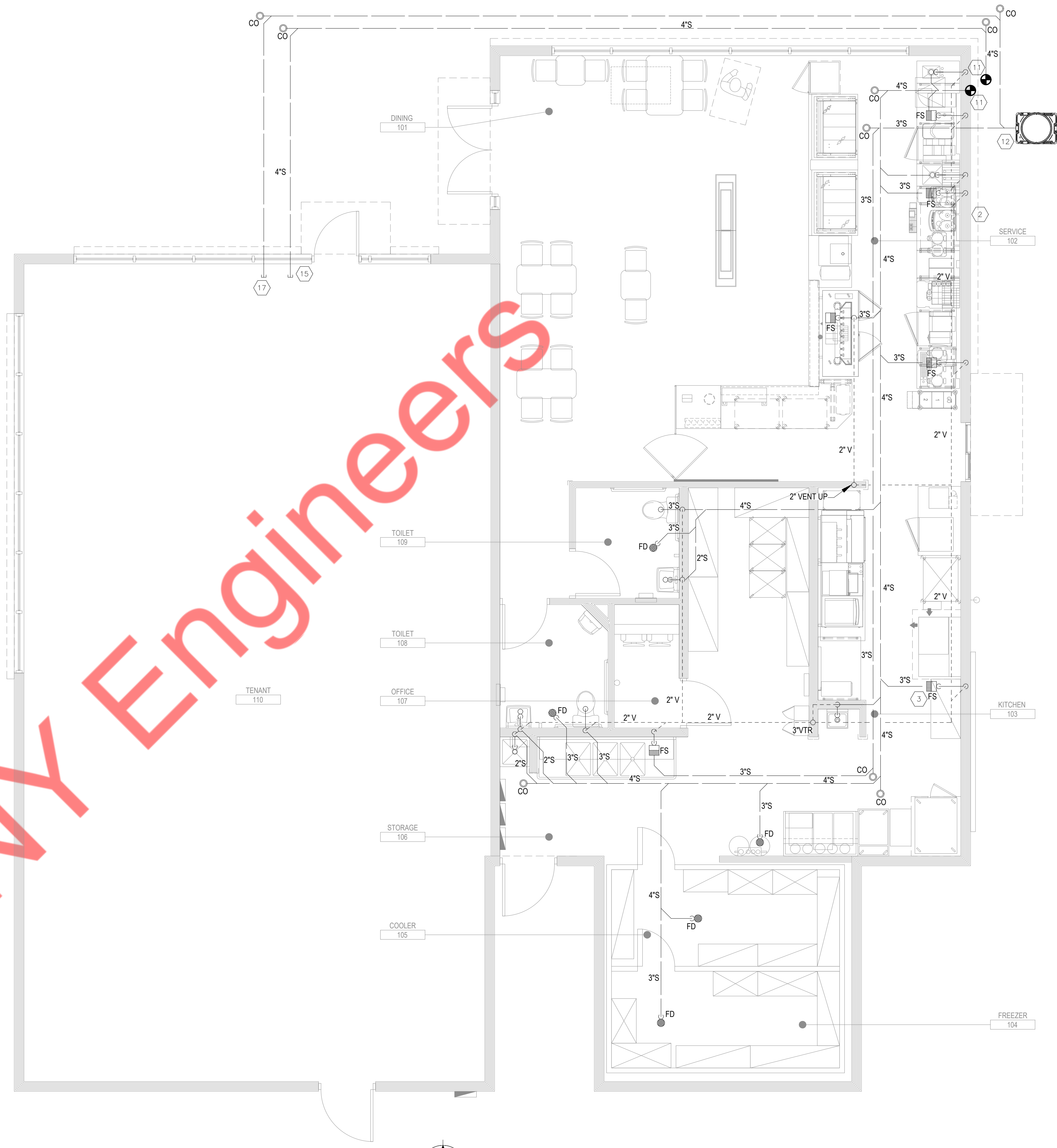
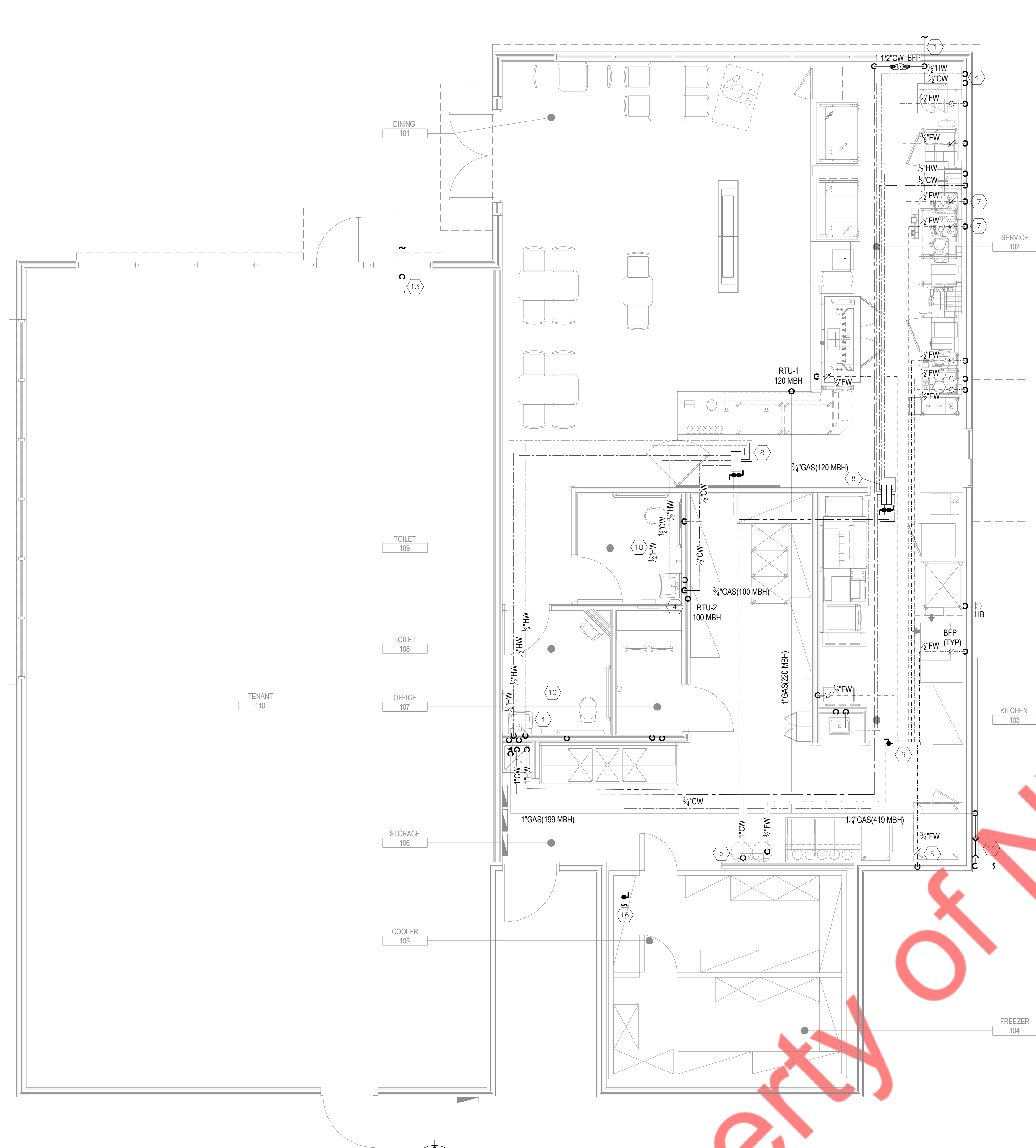
3 D/T SET UP OPT. 1 - "ALTERNATE DIGITAL EXPERIENCE"
SCALE: 1" = 10'-0"

GENERAL NOTES

- ALL UNDERGROUND CONDUIT SHALL BE PVC. PROVIDE GALVANIZED STEEL SLEEVE WHEN PASSING THROUGH THE FOUNDATION WALL, CONCRETE FLOOR. EXTEND CONDUIT 6" ABOVE THE FINISHED FLOOR AND PROVIDED WITH PROTECTIVE GROMMET.
- ALL CONDUIT SHALL BURIED AT LEAST 18" BELOW FINISHED GRADE.
- ALL INSTALLED CONDUIT SHALL BE PROVIDED WITH A PULL STRING.
- LOOP PLACEMENT IS DEFINED IN TERMS OF WHERE THE VEHICLE ENGINE BLOCK WOULD BE OVER THE LOOP IF THE CENTER OF THE DRIVER'S SIDE WINDOW IS AT THE SERVICE POINT. THE GOAL IS TO ENSURE THERE IS ONLY ROOM FOR ONE VEHICLE BEHIND THE PREVIOUS LOOP AND THE MERGE POINT; THIS IS HOW SEQUENCING IS POSSIBLE.
- REFER TO CIVIL DRAWINGS FOR FURTHER INFORMATION AND PROPER LOCATION OF SITE LIGHTING, PYLON SIGNS, DIRECTIONAL SIGNS AND MENU SYSTEM SIGNS.
- ALL LOOP CONDUITS SHALL ROUTE BACK TO DRIVE THRU TIMER MONITOR ADJACENT TO DRIVE THRU WINDOW.
- MENU BOARD LOW VOLTAGE DATA ROUTES BACK TO THE OFFICE.

SITE PLAN LEGENDS

- Power POWER CONDUIT - UNDERGROUND CONDUIT DEDICATED FOR POWER WIRING 120 VOLTS MINIMUM. CONDUIT SIZE SHALL BE A MINIMUM OF 1" UNLESS OTHERWISE INDICATED.
- Data DATA CONDUIT - UNDERGROUND CONDUIT DEDICATED FOR LOW VOLTAGE DATA COMMUNICATION WIRING. CONDUIT SIZE SHALL BE A MINIMUM OF 1" UNLESS OTHERWISE INDICATED.
- Voice VOICE CONDUIT - UNDERGROUND CONDUIT DEDICATED FOR LOW VOLTAGE VOICE DATA COMMUNICATION WIRING. CONDUIT SIZE SHALL BE A MINIMUM OF 1" UNLESS OTHERWISE INDICATED.
- Spare SPARE CONDUIT - UNDERGROUND CONDUIT INSTALL AS A SPARE OR FOR FUTURE USE. MAY BE USED FOR POWER OR DATA, NOT BOTH. CONDUIT SIZE SHALL BE A MINIMUM OF 1" UNLESS OTHERWISE INDICATED.
- Loop LOOP CONDUIT - UNDERGROUND CONDUIT DEDICATED FOR LOW VOLTAGE VEHICLE DETECTION LOOP COMMUNICATION WIRING. CONDUIT SIZE SHALL BE A MINIMUM OF 1" UNLESS OTHERWISE INDICATED.
- Power Conduit POWER CONDUIT - UNDERGROUND CONDUIT DEDICATED FOR ALL MISCELLANEOUS POWER FEEDERS AND BRANCH CIRCUITS. 120 VOLTS MINIMUM. CONDUIT SIZE SHALL BE AS INDICATED.
- Pole Mounted Site Lighting POLE MOUNTED SITE LIGHTING - DOUBLE HEAD LED LIGHTING FIXTURE. SEE CIVIL ENGINEER'S DRAWING FOR TYPE, VOLTAGE AND WATTAGE.
- Pole Mounted Site Lighting POLE MOUNTED SITE LIGHTING - SINGLE HEAD LED LIGHTING FIXTURE. SEE CIVIL ENGINEER'S DRAWING FOR TYPE, VOLTAGE AND WATTAGE.



1 WATER AND GAS PLAN
SCALE: 1/4" = 1'-0"

2 SANITARY PLAN
SCALE: 1/4" = 1'-0"

GENERAL NOTES

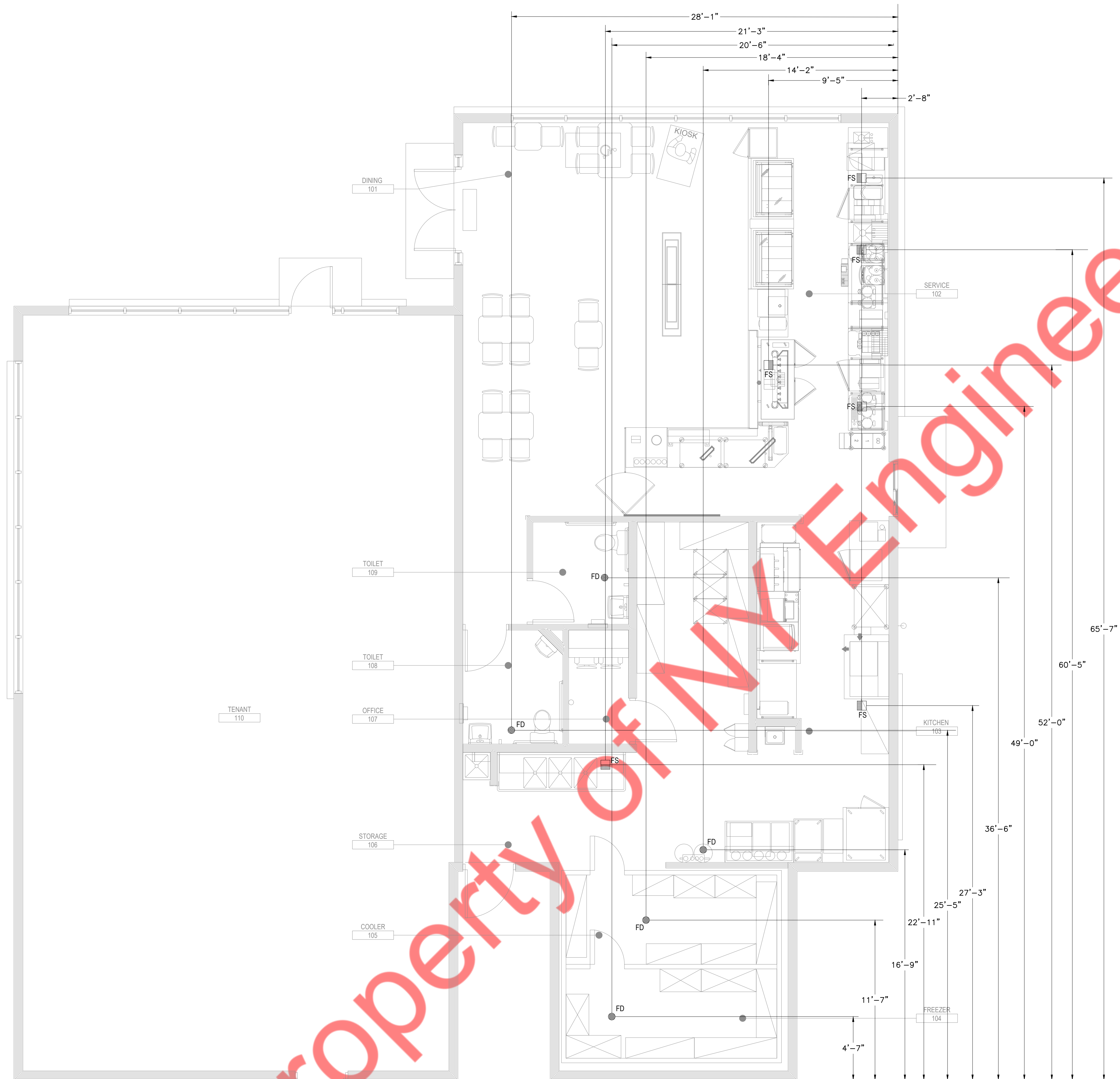
- ALL WORK SHALL COMPLY WITH ALL LOCAL AND STATE CODES AND AUTHORITIES HAVING JURISDICTION.
- THE CONTRACTOR SHALL SECURE AND PAY FOR ALL REQUIRED PERMITS AND ARRANGE ALL REQUIRED INSPECTIONS.
- THE CONTRACTOR SHALL COORDINATE HIS WORK WITH OTHER CONTRACTORS AND TRADES.
- THESE DRAWINGS, AS PREPARED, ARE DIAGRAMMATIC BUT SHALL BE FOLLOWED AS CLOSELY AS CONSTRUCTION OF THE PROJECT AND THE WORK OF THE TRADES WILL PERMIT. EQUIPMENT LOCATIONS INDICATED ARE APPROXIMATE. COORDINATE EXACT LOCATIONS AND REQUIRED CLEARANCES WITH EQUIPMENT SUPPLIER AND ALL TRADES PRIOR TO INSTALLATION.
- THE CONTRACTOR SHALL FURNISH AND INSTALL ALL THE EQUIPMENT INDICATED WITHIN THESE DRAWINGS UNLESS OTHERWISE NOTED. VERIFY LOCATION AND DIMENSIONS IN THE FIELD PRIOR TO FABRICATION AND / OR INSTALLATION.
- ALL ROOF PENETRATIONS SHALL BE AT THE CONTRACTOR'S EXPENSE. COORDINATE WITH OWNER'S ROOFING CONTRACTOR SO AS NOT TO VOID ANY EXISTING ROOF WARRANTIES.
- THE ENTIRE INSTALLATION SHALL BE GUARANTEED FREE OF DEFECTS AND CONTRACTOR SHALL REPAIR AND / OR REPLACE ANY DEFECTIVE MATERIALS OR EQUIPMENT AT NO COST TO THE OWNER FOR A MINIMUM PERIOD OF ONE YEAR FROM THE DATE OF ACCEPTANCE BY ARCHITECT OR ENGINEER.
- ALL WORK SHALL BE SUBJECT TO THE ACCEPTANCE AND APPROVAL OF THE ARCHITECT AND OWNER. THE ARCHITECT SHALL BE NOTIFIED OF ANY AND ALL DISCREPANCIES BETWEEN FIELD CONDITIONS AND THE CONTRACT DOCUMENTS BEFORE PROCEEDING WITH THAT PORTION OF THE WORK. FAILURE OF PROPER NOTIFICATION DOES NOT RELIEVE THE CONTRACTOR. THE CONTRACTOR SHALL CORRECT ANY AND ALL WORK ARISING FROM SUCH FAILURE TO COORDINATE DISCREPANCIES TO THE SATISFACTION OF THE ARCHITECT WITHOUT ADDITIONAL COST TO THE OWNER.
- ALL KITCHEN, PREP AREA AND SALES AREA EQUIPMENT WILL BE FURNISHED AND INSTALLED. EQUIPMENT WILL BE FURNISHED WITH TRIM, FAUCETS, ESCUTCHEONS, ETC. PLUMBING CONTRACTOR SHALL PROVIDE ALL ROUGH-IN TRAPS AND MAKE ALL FINAL CONNECTIONS (SEE EQUIPMENT SCHEDULE).
- ALL PIPING TO BE CONCEALED IN HUNG CEILINGS, CHASES AND FURRED SPACES.
- REFER TO EQUIPMENT SCHEDULE AND EQUIPMENT SPECIFICATIONS FOR EXACT LOCATIONS OF PLUMBING CONNECTIONS.
- THE CONTRACTOR SHALL VERIFY DEPTH, SIZE, LOCATION OF ALL EXISTING UTILITIES IN FIELD PRIOR TO STARTING WORK.
- THE CONTRACTOR SHALL PROVIDE AND INSTALL ALL PIPE HANGERS, AND SUPPORTS IN ACCORDANCE WITH THE LOCAL APPLICABLE CODES.
- THE CONTRACTOR TO PROVIDE TRAP PRIMERS, DEEP SEAL TRAP OR TRAP SEAL ON ALL FLOOR DRAINS AS PER APPLICABLE CODE.

GENERAL NOTES

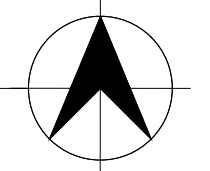
- ALL PENETRATIONS REQUIRED FOR PLUMBING EQUIPMENT AND PIPING THROUGH ANY WALL SHALL BE PROPERLY SEALED OFF TO MAINTAIN THE INTEGRITY OF THE STRUCTURE.
- ALL SHUT OFF AND ISOLATION VALVES SHALL BE BALL TYPE. ALL VALVES SERVING TOILETS AND SINKS SHALL BE ANGLE STOP TYPE.
- PROVIDE AN INDIVIDUAL BALL VALVE AND BACK CHECK VALVE TO EACH INDIVIDUAL PIECE OF EQUIPMENT.
- PROVIDE ASSE1022 BACKFLOW PREVENTER FOR COFFEE MACHINES 124G, 124A, 124E, 116, 200A, 107A, 257 & ESPRESSO MACHINES 96.4.
- PROVIDE AERATORS ON ALL HAND SINKS AND LAVATORIES THROUGHOUT THE FACILITY.
- PROVIDE KAY CHEMICAL DISPENSER (SEE NATIONAL ACCOUNTS) AT MOP SINK AND THREE COMP SINK. MOUNT BOTTLE AND DISPENSER ABOVE SINK AS REQUIRED BY CHEMICAL SUPPLIER.
- PROVIDE HEAT TRAPS ON THE SUPPLY AND DISCHARGE PIPING ASSOCIATED WITH THE EQUIPMENT FOR NON CIRCULATING HOT WATER SYSTEMS AS PER SECTION 504.4 OF 2009 IECC.

PLAN NOTES

- CONNECT TO EXISTING WATER LINE. CONTRACTOR TO VERIFY SIZE AND LOCATION IN FIELD. PROVIDE BACKFLOW PREVENTOR PER REQUIREMENTS OF LOCAL JURISDICTION.
- PIPE INDIRECT DRAIN FROM TROUGH ON COUNTER AT COFFEE STATIONS TO FLOOR SINK. PROVIDE AIR GAP AS REQUIRED BY CODE.
- PROVIDE INDIRECT DRAIN FROM ICE CUBER AND ICE BIN TO ADJACENT FLOOR SINK. CONSULT ICE MACHINE INSTRUCTION MANUAL FOR INDIRECT PIPING REQUIREMENTS.
- PROVIDE THERMOSTATIC MIXING VALVE AT ALL HAND SINKS AND LAVATORIES IF NOT ALREADY PROVIDED WITH THEM. SET AT 110°F MAXIMUM.
- WATER FILTRATION SYSTEM. MOUNT TOP OF SYSTEM 48" AFF. VERIFY ACTUAL LOCATION.
- PROVIDE A PRESSURE REDUCING VALVE, PRESSURE GAUGE, AND SHUT-OFF VALVE AT PLUMBING CONNECTIONS TO OVEN.
- PROVIDE A PRESSURE REDUCING VALVE FOR ESPRESSO MACHINE.
- PROVIDE VALVED MANIFOLD. TAG LINE AS TO FIXTURE SERVED.
- PROVIDE VALVELESS MULTI-PORT TEE. TAG LINE AS TO FIXTURE SERVED.
- ALL BATHROOM FAUCETS TO BE PROVIDED WITH SENSOR.
- CONNECT TO EXISTING SANITARY LINE. CONTRACTOR TO VERIFY SIZE AND LOCATION IN FIELD.
- GREASE TRAP (SCHIER GB-250 OR EQUIVALENT) SHALL BE PROVIDED BY CIVIL. CONTRACTOR TO VERIFY LOCATION IN FIELD AND COORDINATE FINAL LOCATION WITH MANUFACTURER.
- 1 1/2" DOMESTIC WATER FUTURE CONNECTION STUB-OUT. CONNECT TO EXISTING WATER LINE. CONTRACTOR TO VERIFY SIZE AND LOCATION IN FIELD.
- CONNECT TO EXISTING GAS LINE. CONTRACTOR TO VERIFY SIZE AND LOCATION IN FIELD.
- 4" SANITARY FUTURE CONNECTION STUB-OUT. CONNECT TO EXISTING WATER LINE. CONTRACTOR TO VERIFY SIZE AND LOCATION IN FIELD.
- DOMESTIC WATER SERVICE CONNECTION TO WALK IN BOX.
- 4" GREASE SANITARY FUTURE CONNECTION STUB-OUT.



1 **DIMENSIONAL PLAN**
SCALE: 1/4" = 1'-0"



DUNKIN' DONUTS WATER SPECIFICATION & TREATMENT REQUIREMENTS					
CHARACTERISTIC	UNITS	DUNKIN' DONUTS SPECIFICATION		WATER TREATMENT SOLUTIONS	
		IDEAL RANGE	LIMIT	A) WATER FILTER	B) REVERSE OSMOSIS
HARDNESS	PPM	80-120	< 200	> 200	NA
ALKALINITY	PPM	70-110	0-150	> 150	NA
TOTAL DISSOLVED SOLIDS (TDS)	PPM	100-175	< 250	NA	> 250
pH	pH	6.7-7.4	6.7-7.4	< 6.7 OR > 7.4	NA
SODIUM	PPM	0-20	< 40	> 40	NA
CHLORIDE	PPM	0	< 40	> 40	NA
CHLORAMINES	PPM	0	0	> 0	NA
CHLORINE	PPM	0	0	> 0	NA
TURBIDITY	NTU	0-1	< 1	> 1	NA
PRESSURE	PSI	> 65 PSI		BOOSTER PUMP IS REQUIRED	

* IN ADDITION TO THE ABOVE SPECIFICATIONS, WATER MUST MEET NSF42 AND NSF53 STANDARDS
PPM = PARTS PER MILLION
100 PPM = 5.8 GRAINS PER GALLON

NOTES:
1) PRIOR TO CONSTRUCTION, GC SHALL PROVIDE A WATER QUALITY TEST, PERFORMED IN THE CITY IN WHICH THE STORE WILL BE RECEIVING WATER. TESTING TO BE DONE ON A LIVE LINE CONNECTED TO THE SAME SUPPLY LINE FEEDING THE FUTURE STORE.
2) UPON RECEIPT OF THE WATER QUALITY TEST, THE GC SHALL PROVIDE A FILTRATION SYSTEM OR RO SYSTEM THAT WILL TREAT THE INCOMING WATER TO ALLOW IT TO MEET THE REQUIREMENTS IN THE TABLE ABOVE.
3) UPON COMPLETE OF CONSTRUCTION, GC SHALL SUBMIT A SECOND WATER QUALITY TEST TAKEN FROM A TREATED WATER OUTLET TO VERIFY THE PROPER WATER QUALITY IS BEING ACHIEVED.

