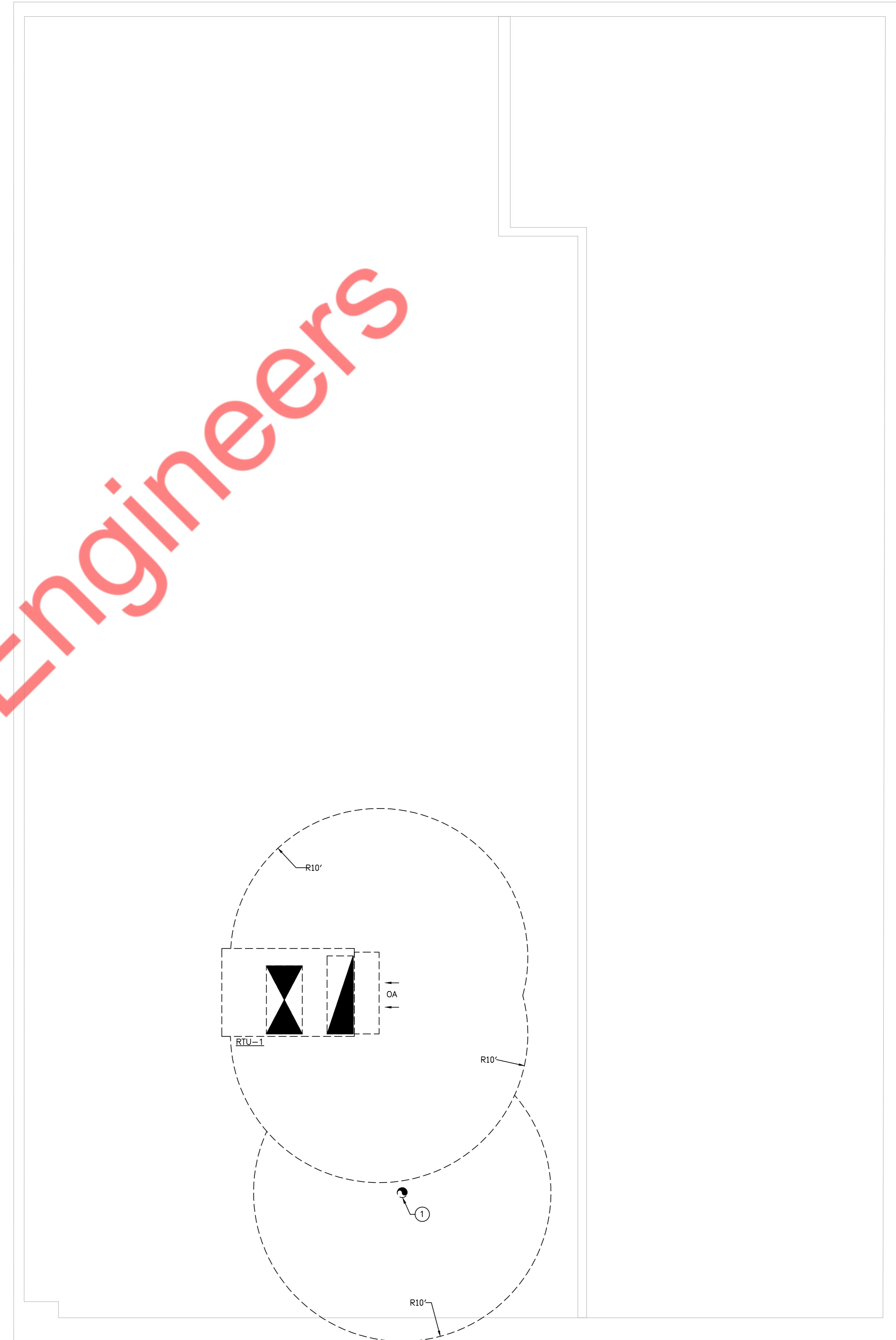


**MECHANICAL PLAN CODED NOTES**

- 1 CONNECT NEW SUPPLY/RETURN DUCT MAINS TO EXISTING DUCT DROP DOWNS FROM ROOFTOP UNITS. ACOUSTICALLY LINE THE FIRST 10'-0" OF BOTH SUPPLY AND RETURN MAIN DUCTS. SET UNIT OUTSIDE AIR QUANTITY AS LISTED ON ROOFTOP UNIT SCHEDULE. FANS TO RUN CONTINUOUSLY DURING OCCUPIED HOURS.
- 2 INSTALL AND WIRE NEW 7-DAY PROGRAMMABLE THERMOSTAT. COORDINATE EXACT LOCATION WITH ARCHITECT AND OWNER PRIOR TO ROUGH-IN.
- 3 MECHANICAL CONTRACTOR TO MOUNT SMOKE DETECTOR REMOTE KEY STATUS AND TEST STATIONS (WITH AUDIO AND VISUAL ALARM) NEXT TO UNIT THERMOSTAT. M.C. TO INDICATE DETECTOR SERVING AIR CONDITIONING UNIT. COORDINATE EXACT LOCATION WITH FIRE MARSHAL PRIOR TO ROUGH-IN. ALL WIRING SHALL BE BY ELECTRICAL CONTRACTOR IN CONDUIT PER N.E.C. REMOTE STATION SHALL BE A SYSTEM SENSOR MODEL SSK451 OR EQUAL.
- 4 SMOKE DETECTOR SHALL BE FURNISHED/INSTALLED BY MECHANICAL CONTRACTOR AND WIRED BY ELECTRICAL CONTRACTOR TO SHUT DOWN CORRESPONDING AIR CONDITIONING UNIT UNDER ALARM CONDITIONS. ALL WIRING SHALL BE IN CONDUIT PER N.E.C. SMOKE DETECTOR SHALL BE SENSOR MODEL DH100ACDCLP OR EQUAL.
- 5 ROUTE 8" EXHAUST DUCT UP THROUGH ROOF WITH TALL CONE FLASHING, WEATHER SKIRT, AND VENT CAP. MAINTAIN A MINIMUM OF 10'-0" FROM ALL OUTSIDE AIR INTAKES AND TERMINATES 36" ABOVE ROOF.
- 6 RETURN GRILLES TO BE MOUNTED ON TOP OF EXPOSED RETURN DUCTWORK.
- 7 CONTRACTOR TO INSTALL RETURN GRILLE LOW IN OFFICE, AND HIGH ON OTHER SIDE OF WALL.
- 8 TEMPERATURE SENSOR FOR THERMOSTAT SERVING DESIGNATED ROOF TOP UNIT.

1 MECHANICAL PLAN  
M1.0 SCALE: 1/4" = 1'-0"

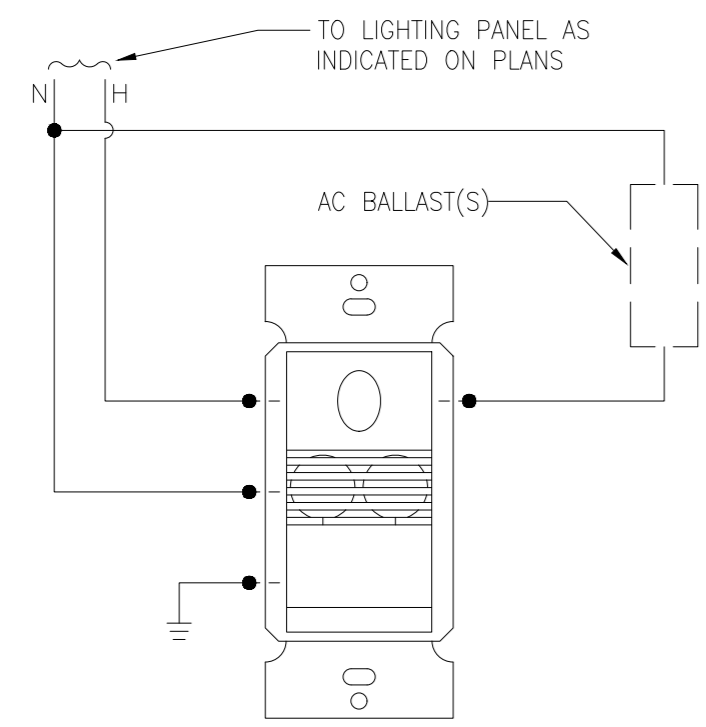


2 MECHANICAL ROOF PLAN  
M1.0 SCALE: 1/4" = 1'-0"

**MECHANICAL ROOF PLAN CODED NOTES**

- 1 EXHAUST DUCT UP THROUGH ROOF WITH TALL CONE FLASHING, WEATHER SKIRT, AND VENT CAP. MAINTAIN A MINIMUM OF 10'-0" FROM ALL OUTSIDE AIR INTAKES AND TERMINATES 36" ABOVE ROOF.

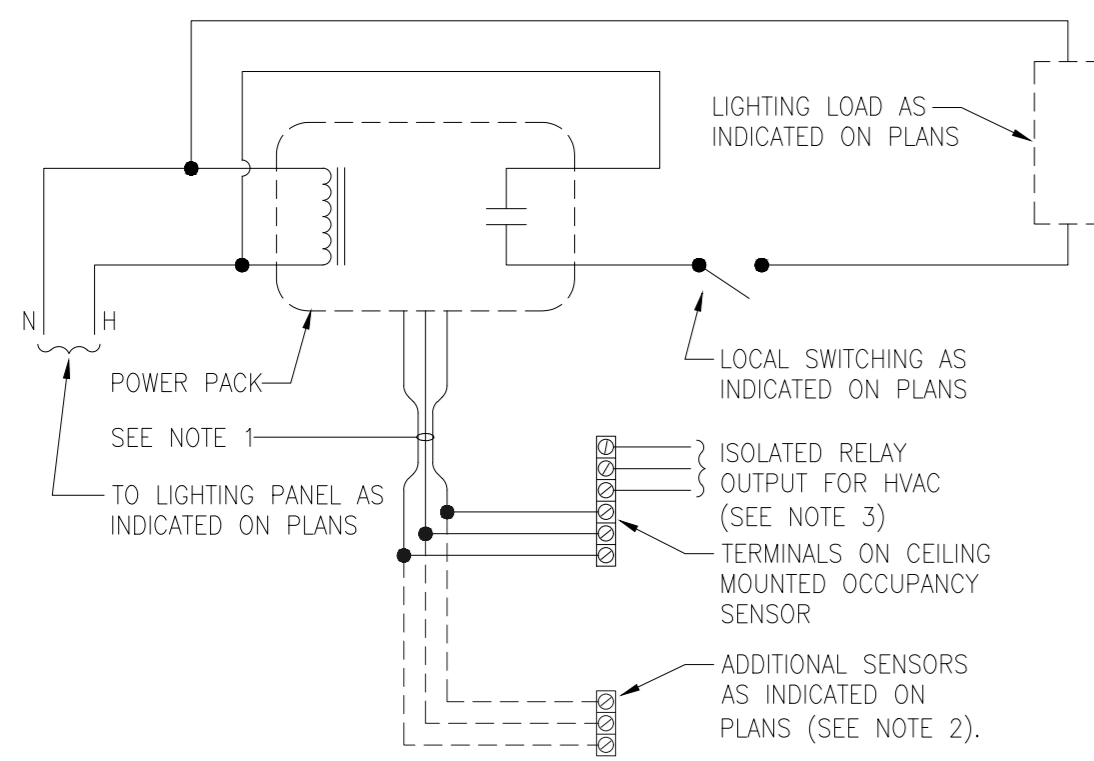
Property of NY Engineers



**VACANCY SENSOR SWITCH WIRING DIAGRAM**  
SCALE: NOT TO SCALE

**NOTES:**

1. ALL LOW VOLTAGE WIRING AND TERMINATIONS TO BE BY ELECTRICAL CONTRACTOR.
2. VACANCY SENSOR SHALL BE "SENSOR SWITCH" WSX-PDT-SA-WH OR APPROVED EQUAL.



**CEILING MOUNTED OCCUPANCY SENSOR WIRING DIAGRAM**  
SCALE: NOT TO SCALE

**NOTES:**

1. ALL LOW VOLTAGE WIRING AND TERMINATIONS TO BE BY ELECTRICAL CONTRACTOR.
2. MAXIMUM NUMBER OF SENSORS PER POWER PACK IS DEPENDANT ON MANUFACTURER. COORDINATE QUANTITY OF POWER PACKS WITH MANUFACTURER.
3. AUXILIARY RELAY IS ENERGIZED DURING 'UNOCCUPIED' STATE.
4. OCCUPANCY SENSOR SHALL BE DUAL TECHNOLOGY "SENSOR SWITCH" CM-PDT-10 OR APPROVED EQUAL. ALL EXPOSED CONTROL WIRING SHALL BE IN CONDUIT.

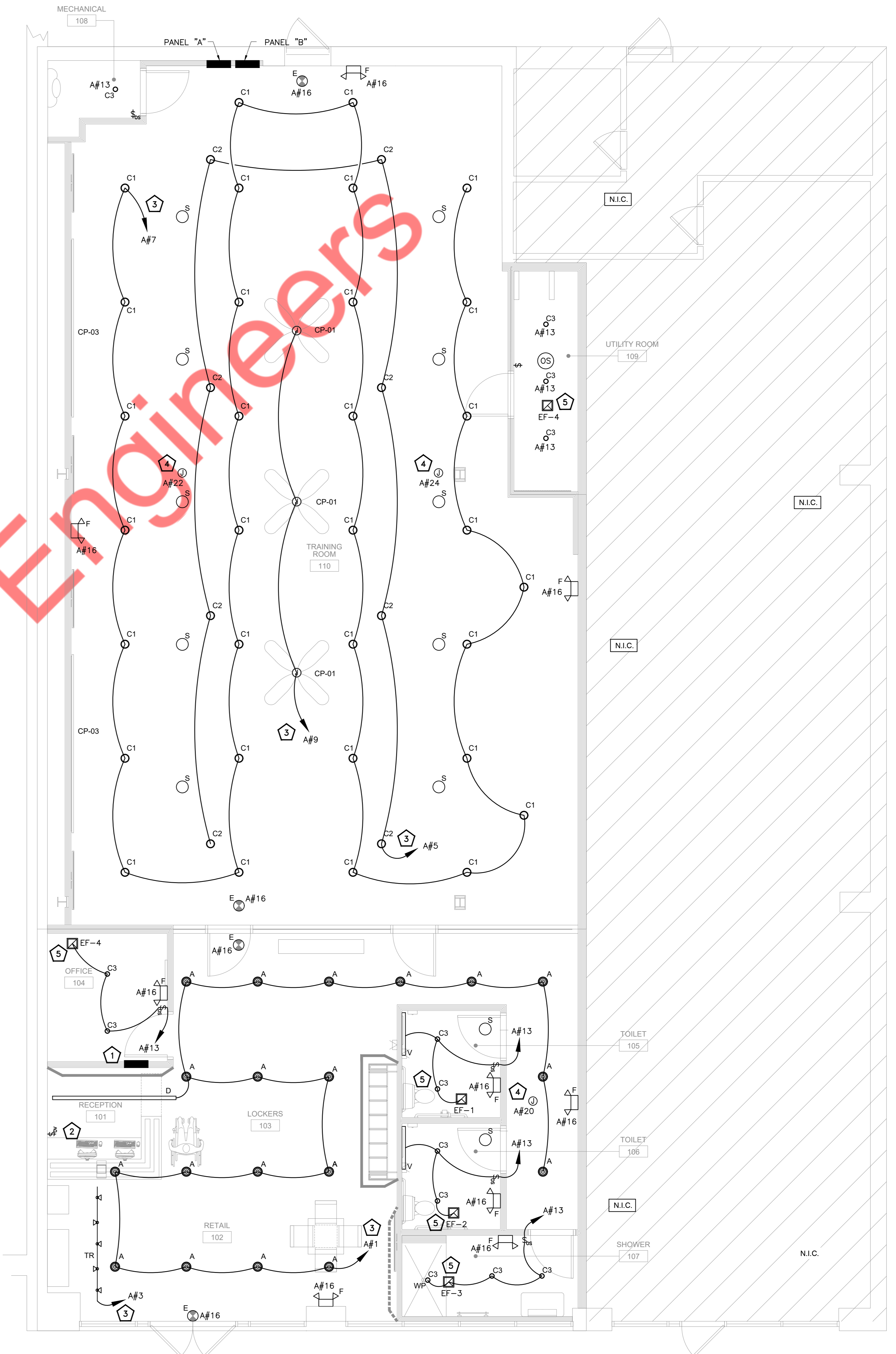
LIGHT FIXTURE SCHEDULE			
TYPE	WATTAGE LAMP	DESCRIPTION	CATALOG NO.
A	LED 46W	ELITE: 6" ARCHITECTURAL LED CYLINDER	ETFPENDANTBK001-4000L-MVOLT-MD-35K-9CET6-MB-BK
C1	LED 9W	COLORBEAM: T SERIES KIT - FLUSH LIGHTS	T-150-22-9W-RGB-B40
C2	LED 46W	ELITE: 6" ARCHITECTURAL HIGH LUMEN LED DOWNLIGHT	TFCAN6*WT002-LED-4000L-MVOLT-MD-35K-9CET6-MB-BK
C3	LED 20W	ELITE: 4" ARCHITECTURAL HIGH LUMEN LED DOWNLIGHT	ETFCAN4*WT003-LED-1500L-MVOLT-MD-35K-9CET4-WH-WH
D	LED 9.5W/FT	ELITE: ARCHITECTURAL LED SUSPENDED LINEAR - DIRECT	ETFWALLFLOODBK001-LED-2"-S-7-8-1000L-WW-MVOLT-40K-85-BK-OCSS
TR	LED 15W	ELITE: ARCHITECTURAL LED TRACK HEAD	ETFRACKKITBK001-200L-NFL-35K-90
V	LED 52W	NOVO: LIGHTED MIRROR	695 LUMENS COLOR APERTURE: 3500K
E	LED 2W	ELITE: LED EXIT SIGN WITH BATTERY BACK-UP	ETFEXIT001-603-G-W
F	LED 1W	LED EMERGENCY LIGHT WITH BATTERY BACK-UP	ETFETBUGEYE001-W

**LIGHTING FIXTURE SCHEDULE GENERAL NOTES:**

1. VERIFY ALL FIXTURE COLORS, TRIMS, LENGTHS, ETC. WITH THE ARCHITECT PRIOR TO PLACING FINAL PURCHASE ORDERS. SUBMISSION OF SHOP DRAWINGS WILL BE INTERPRETED AS HAVING BEEN COORDINATED WITH THE ARCHITECTURAL DRAWINGS.
2. PROVIDE ALL LENGTHS, FEEDS, ACCESSORIES, CONNECTORS, WIRING, POWER SUPPLIES, DRIVERS, ETC. FOR A COMPLETE INSTALLATION. E.G. SHALL VERIFY THE COMPLETE BILL OF MATERIAL WITH MANUFACTURER'S REPRESENTATIVE AND INSURE ALL EQUIPMENT IS INCLUDED IN BID PRICE. COORDINATE INSTALLATION WITH ARCHITECTURAL DETAILS.
3. VERIFY TYPE OF CEILING OR WALL FOR ALL RECESSED LIGHTING FIXTURES PRIOR TO ORDERING.
4. PROVIDE ALL ADDITIONAL HARDWARE FOR FIXTURE MOUNTING AS REQUIRED AT NO EXTRA COST.
5. ALL WIRE WITHIN (3) THREE INCHES OF BALLASTS SHALL BE RATED A MINIMUM OF 90°C.
6. MINIMUM LENS THICKNESS TO BE .125 INCHES, WHERE LENSES ARE USED.
7. THE FIXTURE SCHEDULE DOES NOT NECESSARILY LIST ALL ACCESSORIES AND HARDWARE NECESSARY FOR THE COMPLETION OF INSTALLATION, NOR DOES IT DETAIL THE CEILING CONSTRUCTION TO BE ENCOUNTERED. IT IS THE CONTRACTOR'S RESPONSIBILITY TO PROPERLY DETERMINE AND PROVIDE CORRECT COMPONENTS, ACCESSORIES, AND HARDWARE AS REQUIRED FOR THE INSTALLATION.
8. CONTRACTOR SHALL COORDINATE WITH ARCHITECTURAL DRAWINGS AND CEILING CONTRACTOR FOR EXACT LIGHTING FIXTURE LOCATION.

**ELECTRICAL LIGHTING PLAN KEYED WORK NOTES:**

1. PROVIDE LIGHTING CONTROL PANEL WITH 6 RELAYS TO CONTROL CIRCUITS A#1,3,5,7,9,15 LC&D #GR1408-LT-ENC-SMNE1/GR1408LINT-BNCL-DTC-DV. WIRE TO ROOM'S CONVENIENCE RECEPTACLE FOR 120V POWER. COORDINATE PROGRAMMING AND FINAL LOCATION WITH OWNER.
2. PROVIDE LOW VOLTAGE OVERRIDE SWITCH WITH CAT 5 CABLING TO LCP. DS1 = LC&D #CHS WITH A BUTTON FOR EACH INTERIOR LIGHTING RELAY.
3. WIRE THROUGH RELAY IN 'LCP'.
4. JUNCTION BOX FOR CEILING MOUNTED SPEAKERS. COORDINATE LOCATION AND EXACT POWER REQUIREMENTS WITH MANUFACTURER PRIOR TO ROUGH-IN.
5. EXHAUST FAN IN THIS ROOM SHALL BE CONTROLLED ALONG WITH THE LIGHT FIXTURES IN THE SAME ROOM.



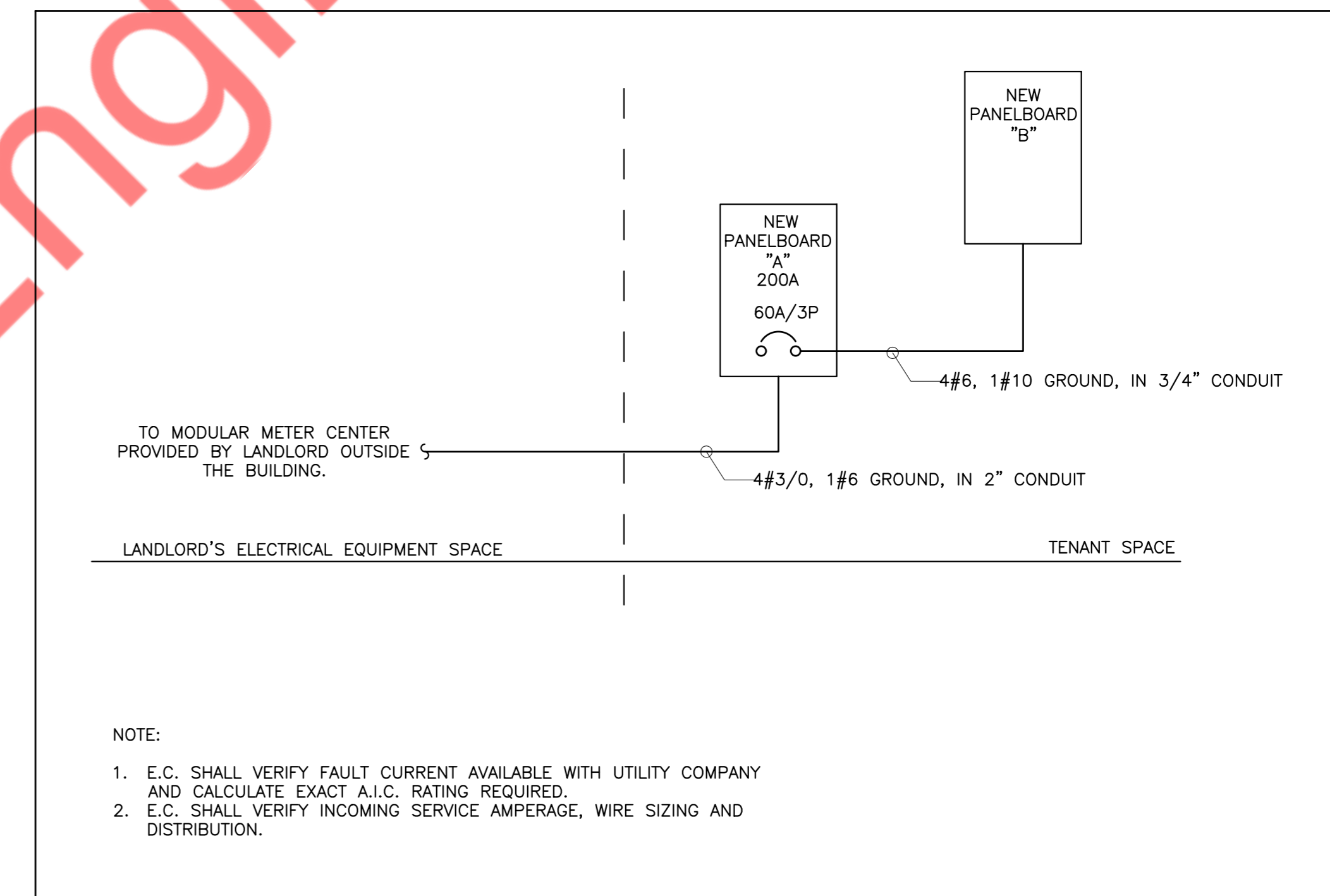


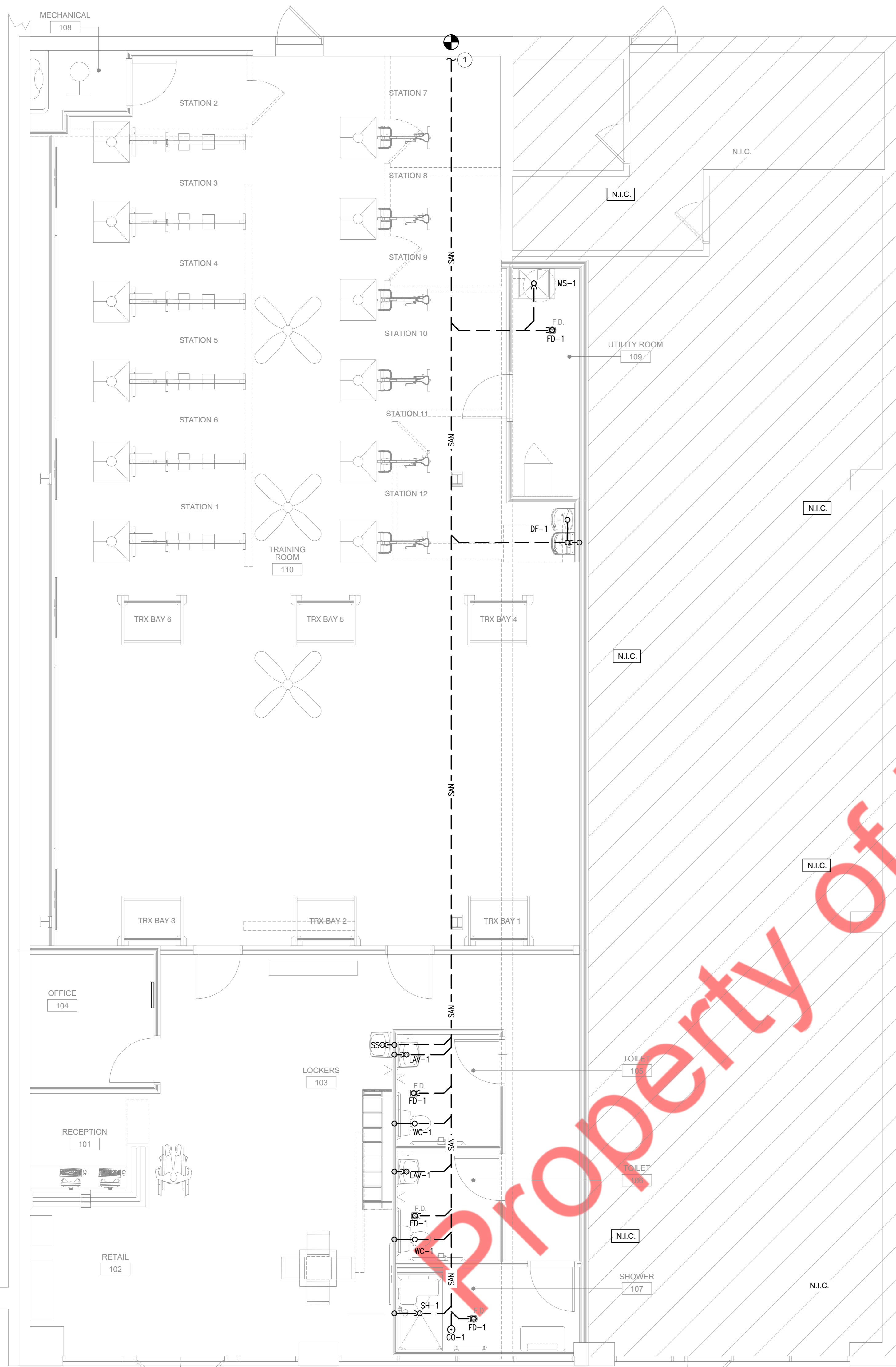
PANELBOARDS:

PANEL: A												MOUNTING:	SURFACE
120/240	VOLTS,	3 PHASE,			4 WIRE								
MAIN CB	200A	BUS			225A	MIN,	INTERRUPTING RATING			22 KAIC			
CKT NO.	TRIP AMPS	DESCRIPTION OF LOAD	LOAD TYPE	LOAD (KVA)	PER PHASE (KVA)			LOAD (KVA)	LOAD TYPE	DESCRIPTION OF LOAD	TRIP AMPS	CKT NO.	
					A	B	C						
1	20	LIGHTING RECEPTION, RETAIL	L	0.65	1.37			0.72	R	RECEPTACLE GENERAL	20	2	
3	20	LIGHTING RECEPTION TRACK	L	0.60		0.96		0.36	E	TRAINING ROOM TV'S	20	4	
5	20	LIGHTING TRAINING	L	0.60			0.96	0.36	E	TRAINING ROOM TV'S	20	6	
7	20	LIGHTING TRAINING	L	0.60	1.68			1.08	R	USB RECHARGEABLE OUTLETS	20	8	
9	20	CEILING FAN	L	0.60		1.68		1.08	R	USB RECHARGEABLE OUTLETS	20	10	
11	20	RECEPTION DESK SIGN	L	0.50			1.58	1.08	R	USB RECHARGEABLE OUTLETS	20	12	
13	20	LIGHTING OFFICE, RESTROOM	L	0.50	1.58			1.08	R	USB RECHARGEABLE OUTLETS	20	14	
15	20	EXTERIOR SIGNAGE	L	0.50		0.7		0.20	L	EM/EXIT LIGHTS	20	16	
17	20	SHOW WINDOW RECEPTACLE	R	0.36			0.54	0.18	R	TV RECEPTACLE	20	18	
19	20	POS RECEPTACLE	E	0.36	0.46			0.10	E	CEILING MOUNTED SPEAKERS	20	20	
21	20	POS RECEPTACLE	E	0.36		0.46		0.10	E	CEILING MOUNTED SPEAKERS	20	22	
23	20	CHECK IN I-PAD STATION	E	0.10			0.2	0.10	E	CEILING MOUNTED SPEAKERS	20	24	
25	20	RECEPTACLE RESTROOM	R	0.72	5.72			5.00	H		20	26	
27	20	ELECTRIC WATER COOLER	E	1.00		6		5.00	H	WATER HEATER	20	28	
29	20	RECEPTACLE GENERAL	R	0.54			5.54	5.00	H		20	30	
31	20	HWCP-1	E	0.03	6.79			6.76	H		20	32	
33			E	0.81		7.57		6.76	H	RTU-1	20	34	
35		TO PANEL B	E	0.81			7.57	6.76	H		20	36	
37			E	0.81	1.81			1.00	E	TRAINING ROOM PROJECTOR'S	20	38	
39	20	UTILITY GFI RECEPTALE	R	0.36			0.36			SPARE	20	40	
41	20	UTILITY QUARD RECEPTALE	R	0.36				0.36		SPARE	20	42	
TOTAL LOAD (KVA)					19.41	17.73	16.75						

PANEL: B												MOUNTING:	SURFACE
120/240	VOLTS,	3 PHASE,			4 WIRE								
MAIN CB		100A			MIN,	INTERRUPTING RATING			22 KAIC				
CKT NO.	TRIP AMPS	DESCRIPTION OF LOAD	LOAD TYPE	LOAD (KVA)	PER PHASE (KVA)			LOAD (KVA)	LOAD TYPE	DESCRIPTION OF LOAD	TRIP AMPS	CKT NO.	
					A	B	C						
1	20	OFFICE RECEPTACLE	R	0.36	0.36					SPARE	20	2	
3	20	OFFICE RECEPTACLE	R	0.36		0.36				SPARE	20	4	
5	20	OFFICE RECEPTACLE	R	0.36			0.36			SPARE	20	6	
7	20	OFFICE RECEPTACLE	R	0.36	0.36					SPARE	20	8	
9	20	OFFICE RECEPTACLE	R	0.36		0.36				SPARE	20	10	
11	20	OFFICE RECEPTACLE	R	0.36			0.36			SPARE	20	12	
13	20	ROOF LIGHTING	L	0.10	0.1					SPARE	20	14	
15	20	ROOF RECEPTACLE	R	0.18		0.18				SPARE	20	16	
17	20	SPARE					0			SPARE	20	18	
19	20	SPARE			0					SPARE	20	20	
21	20	SPARE				0				SPARE	20	22	
23	20	SPARE					0			SPARE	20	24	
25	20	SPARE						0		SPARE	20	26	
27	20	SPARE					0			SPARE	20	28	
29	20	SPARE						0		SPARE	20	30	
TOTAL LOAD (KVA)					0.82	0.9	0.72						

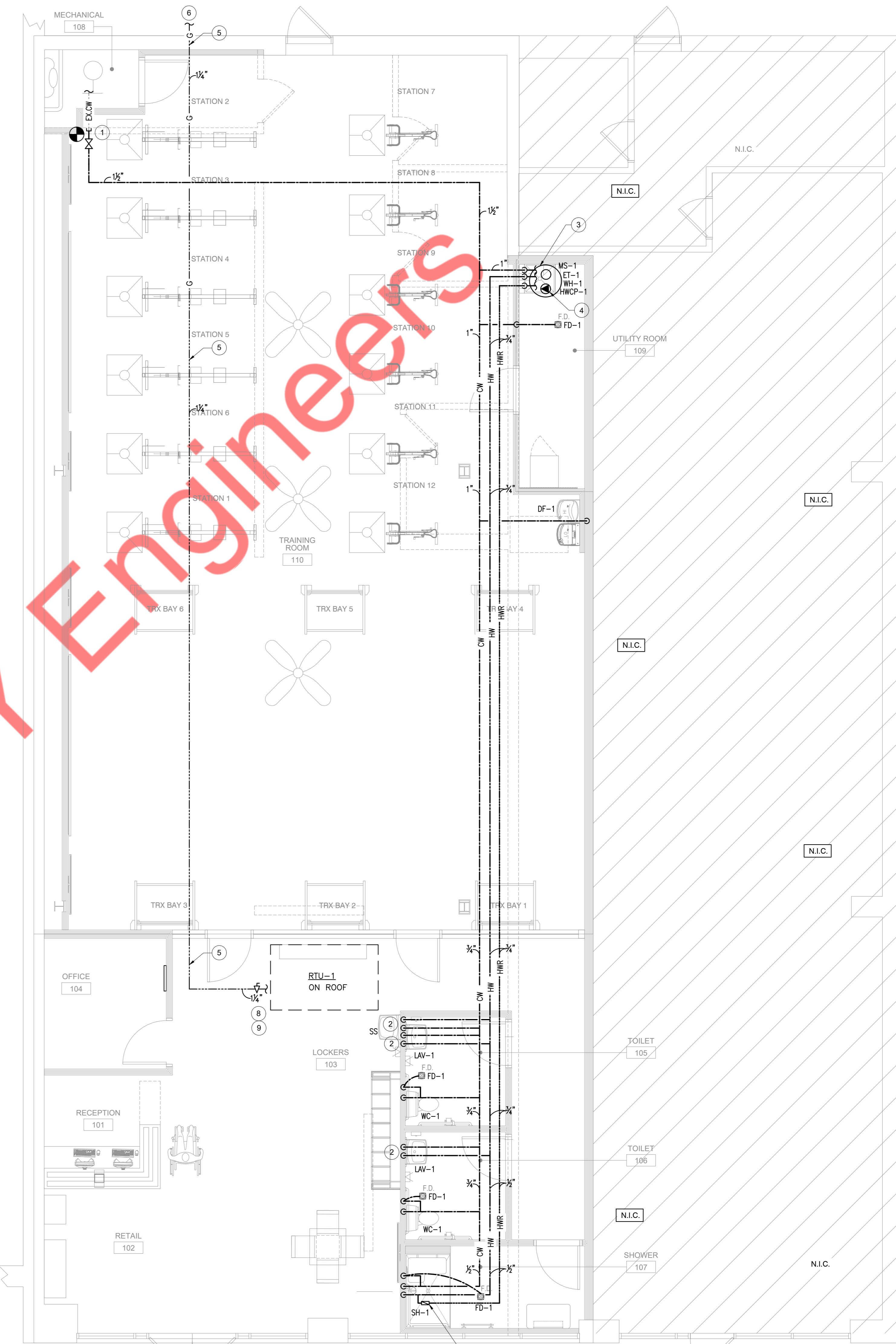
ELECTRICAL RISER DIAGRAM





**1 SANITARY PLUMBING PLAN**  
SCALE: 1/4" = 1'-0"

- SANITARY PLUMBING PLANS CODED NOTES:**
- CONNECT NEW SANITARY PIPING TO EXISTING MAIN IN THIS AREA. PLUMBING CONTRACTOR SHALL VERIFY EXACT LOCATION, SIZE AND INVERT OF EXISTING SANITARY MAIN. SAWCUT AND TRENCH FLOOR AS REQUIRED AND PATCH FLOOR TO MATCH EXISTING.
  - 3" FLOOR DRAIN. PROVIDE WATERLESS SURESEAL TRAP SEALER FOR FLOOR DRAIN. COORDINATE EXACT LOCATION WITH ARCHITECT/OWNER.
  - CONTRACTOR TO FIELD VERIFY AND CONNECT NEW 2" VENT TO EXISTING VENT IN EXISTING TOILET AREA.



**2 WATER PIPING PLAN**  
SCALE: 1/4" = 1'-0"

- WATER AND GAS PIPING PLANS CODED NOTES:**
- CONNECT TO EXISTING CW STUB IN SPACE. CONTRACTOR TO FIELD VERIFY EXACT LOCATION IN FIELD. PROVIDE WITH NEW WATER METER & BACKFLOW PREVENTOR PER REQUIREMENTS OF LOCAL JURISDICTION. COORDINATE ALL WORK WITH G.C. AND UTILITY COMPANY.
  - PROVIDE A TEMPERING VALVE FOR LAVATORIES. POWER HYDROGUARD SERIES LM495, ASSE 1070 OR EQUAL. SET TEMPERATURE TO A MAXIMUM OF 110°F.
  - INSTALL NEW ELECTRIC WATER HEATER ABOVE SERVICE SINK. CONNECT 1" HW AND 1" CW PIPING. PROVIDE DRAIN PAN AND ROUTE DRAIN TO SERVICE SINK WITH AIR GAP. SEE WATER HEATER DETAIL ON SHEET P000 FOR ADDITIONAL INFORMATION.
  - PROVIDE HOT WATER RECIRCULATION PUMP AND STRAP ON AQUASTAT. INSTALL AQUASTAT ON FIXTURE FARTHEST AWAY FROM HOT WATER HEATER. EXTEND RECIRCULATION PIPING TO EXTERIOR TANKLESS WATER HEATER PER MANUFACTURER'S INSTRUCTION.
  - ALL NEW GAS PIPING IS RUNNING ON ROOF, SHOWN ON PLAN FOR REFERENCE ONLY.
  - CONTINUE NEW GAS PIPE LINE TO GAS METER. CONTRACTOR TO FIELD VERIFY AND PROVIDE NEW GAS METER AS REQUIRED.
  - ALL BATHROOM FAUCETS TO BE PROVIDED WITH SENSOR.
  - EXTEND GAS LINE TO ROOFTOP UNITS. PROVIDE SHUTOFF VALVE, UNION AND DIRTLEG.
  - CONTRACTOR TO FIELD VERIFY EXISTING AVAILABLE GAS PRESSURE AND MAKE SURE TO PROVIDE ADEQUATE INLET PRESSURE REQUIRED FOR RTU-1.