

ALL ROOF PENETRATIONS TO BE PERFORMED BY LANDLORDS ROOFING CONTRACTOR AT TENANTS EXPENSE.

INDOOR UNIT SCHEDULE

| TAG      | UNIT | COOLING CAP. (MBH) | HEATING CAP. (MBH) | CFM | PIPING CONNECTIONS |      |       | FAN O/P | ESP (IN. WG) | ELECTRICAL DATA (120/208V/60HZ) |           | DIMENSIONS (L X W X D) (IN.) | WT. (LBS) | MANUFACTURER MODEL NO. |
|----------|------|--------------------|--------------------|-----|--------------------|------|-------|---------|--------------|---------------------------------|-----------|------------------------------|-----------|------------------------|
|          |      |                    |                    |     | LIQ.               | GAS  | DRAIN |         |              | CURRENT I/P                     | POWER I/P |                              |           |                        |
| AC-1 2.5 | 2.5  | 30                 | 34                 | 810 | 3/8"               | 5/8" | 1"    | 80W     | 0.14         | 0.8 A                           | 95 W      | 52 X 33 X 12                 | 88.2      | TRANE 4TVL0030B100NB   |
| 2 2.5    | 2.5  | 30                 | 34                 | 810 | 3/8"               | 5/8" | 1"    | 80W     | 0.14         | 0.8 A                           | 95 W      | 52 X 33 X 12                 | 88.2      | TRANE 4TVL0030B100NB   |
| 3 2.5    | 2.5  | 30                 | 34                 | 810 | 3/8"               | 5/8" | 1"    | 80W     | 0.14         | 0.8 A                           | 95 W      | 52 X 33 X 12                 | 88.2      | TRANE 4TVL0030B100NB   |
| 4 2.5    | 2.5  | 30                 | 34                 | 810 | 3/8"               | 5/8" | 1"    | 80W     | 0.14         | 0.8 A                           | 95 W      | 52 X 33 X 12                 | 88.2      | TRANE 4TVL0030B100NB   |

OUTDOOR UNIT SCHEDULE

| TAG      | LOCATION | UNIT | COOLING PERFORMANCE |            |     | HEATING PERFORMANCE |        |      | COMPRESSORS | PIPING CONNECTIONS |      |     | ELECTRICAL DATA (30/208V/60HZ) |     | DIMENSIONS (L X W X D) (IN.) | WT. (LBS) | MANUFACTURER MODEL NO. |
|----------|----------|------|---------------------|------------|-----|---------------------|--------|------|-------------|--------------------|------|-----|--------------------------------|-----|------------------------------|-----------|------------------------|
|          |          |      | TONS                | CAP. (MBH) | EER | CAP. (MBH)          | COP    | TYPE |             | NO.                | LIQ. | GAS | MCA                            | MOP |                              |           |                        |
| ACU-1 10 | OUTDOOR  | 10   | 120                 | 11.1       | 135 | 3.43                | SCROLL | 2    | 1/2"        | 1-1/2"             | 43   | 50  | 51X 31 X 67                    | 624 | TRANE 4TVH0120B300NB         |           |                        |

REFRIGERANT = R410A  
ODU TO IDU HEIGHT DIFFERENCE : 131 FT. MAXIMUM  
BASIS OF DESIGN: SPLIT SYSTEM WITH 4 INDOOR & 1 OUTDOOR UNIT, LOW AMBIENT HEAD PRESSURE CONTROLS, PROGRAMMABLE THERMOSTAT.

- NOTES:  
1) CONTRACTOR TO HIRE STRUCTURAL ENGINEER TO VERIFY STRUCTURAL INTEGRITY OF ROOF DECK. ADDITIONAL STRUCTURAL REQUIREMENTS ARE THE RESPONSIBILITY OF THIS CONTRACTOR.  
2) RUN 1" CONDENSATE DRAIN LINE TO NEAREST FUNNEL RAIN.  
3) UNIT SHALL BE MOUNTED ON CONCRETE PADS WITH VIBRATION ELIMINATORS (WHERE REQUIRED). LOCATE PER LANDLORD'S SPECIFICATIONS.

LEGEND

|  |  |  |                               |  |                                     |  |                              |
|--|--|--|-------------------------------|--|-------------------------------------|--|------------------------------|
|  | SQUARE CEILING SUPPLY AIR DIFFUSER 24/24 |  | EQUIPMENT LABEL               |  | TEMPERATURE SENSOR                  |  | SMOKE DAMPER                 |
|  | SQUARE CEILING SUPPLY AIR DIFFUSER 12/12 |  | CFM/TONNAGE                   |  | CARBON DIOXIDE SENSOR               |  | FIRE/SMOKE DAMPER            |
|  | ROUND SUPPLY AIR DIFFUSER                |  | DIFFUSER NECK SIZE            |  | NEW DUCTWORK                        |  | BACK DRAFT DAMPER            |
|  | CEILING RETURN AIR GRILLE                |  | DIFFUSER AIRFLOW PATTERN      |  | NEW DUCTWORK WITH ACOUSTICAL LINING |  | PHOTOELECTRIC SMOKE DETECTOR |
|  | THERMOSTAT                               |  | X=DUCT WIDTH<br>Y=DUCT HEIGHT |  | EXISTING DUCTWORK                   |  | RELOCATED                    |
|  |  |  | SAD SUPPLY AIR DIFFUSER       |  | VOLUME DAMPER                       |  | FLEXIBLE CONNECTION          |
|  |  |  | RETURN AIR GRILLE             |  | CABLE OPERATED VOLUME DAMPER        |  | FIELD CONNECTION             |
|  |  |  | TOP REGISTER                  |  |                                     |  |                              |
|  |  |  | FIRE DAMPER                   |  |                                     |  |                              |

AIR BALANCE SCHEDULE

| MARK                    | AIR CFM |     |     |
|-------------------------|---------|-----|-----|
|                         | S/A     | O/A | E/A |
| AC-1, AC-2, AC-3 & AC-4 | 4,050   | 900 | -   |
| EF-1                    | -       | -   | 70  |
| EF-2                    | -       | -   | 70  |
| EF-3                    | -       | -   | 170 |
| TOTAL                   | 4,050   | 900 | 310 |

SALES PRESSURIZATION (O/A) -  
(E/A) = + 900 CFM - 310 CFM = +590 CFM  
NET BUILDING PRESSURIZATION = +590 CFM

SMOKE DETECTOR TEST STATION

|  |  |
|--|--|
|  | REMOTE TEST STATION WITH AUDIBLE AND VISUAL ALARM FOR DUCT SMOKE DETECTOR MANUFACTURED BY SIMPLEX MODEL 4098-9842. |
|--|--|

THERMOSTAT SCHEDULE

|  |   |
|--|---|
|  | THERMOSTAT SHALL BE MANUFACTURED BY HONEYWELL, MODEL VisionPRO WIFI (THB321WF1001). THERMOSTAT SHALL BE TOUCHSCREEN PROGRAMMABLE 7-DAY TYPE. PROVIDE LOCKING GUARD COVER. MOUNT AT 4'-0" AFF. |
|--|---|

EXHAUST FAN SCHEDULES

|      | SERVICE    | CFM | E.S.P. *WG | RPM  | MOTOR HP | VOLTS/ PH | MANUFACTURER | MODEL    | FAN TYPE | WEIGHT | NOTES |
|------|------------|-----|------------|------|----------|-----------|--------------|----------|----------|--------|-------|
| EF-1 | TOILET RM. | 70  | 0.25       | 900  | 1/10     | 115/1     | GREENHECK    | SP-A 90  | DIRECT   | 12     | 1,2,3 |
| EF-2 | TOILET RM. | 70  | 0.25       | 900  | 1/10     | 115/1     | GREENHECK    | SP-A 90  | DIRECT   | 12     | 1,2,3 |
| EF-3 | DOG WASH   | 170 | 0.25       | 1400 | 1/6      | 115/1     | GREENHECK    | SP-A 190 | DIRECT   | 17     | 1,2,3 |

- NOTES: (NOT ALL MAY APPLY)  
1. PROVIDE INDEPENDENT WEATHER PROOF DISCONNECT SWITCH IN SIGHT OF THE EQUIPMENT.  
2. PROVIDE GRAVITY BACKDRAFT DAMPER.  
3. FURNISHED AND INSTALLED BY MECHANICAL CONTRACTOR.

AIR DEVICE SCHEDULE

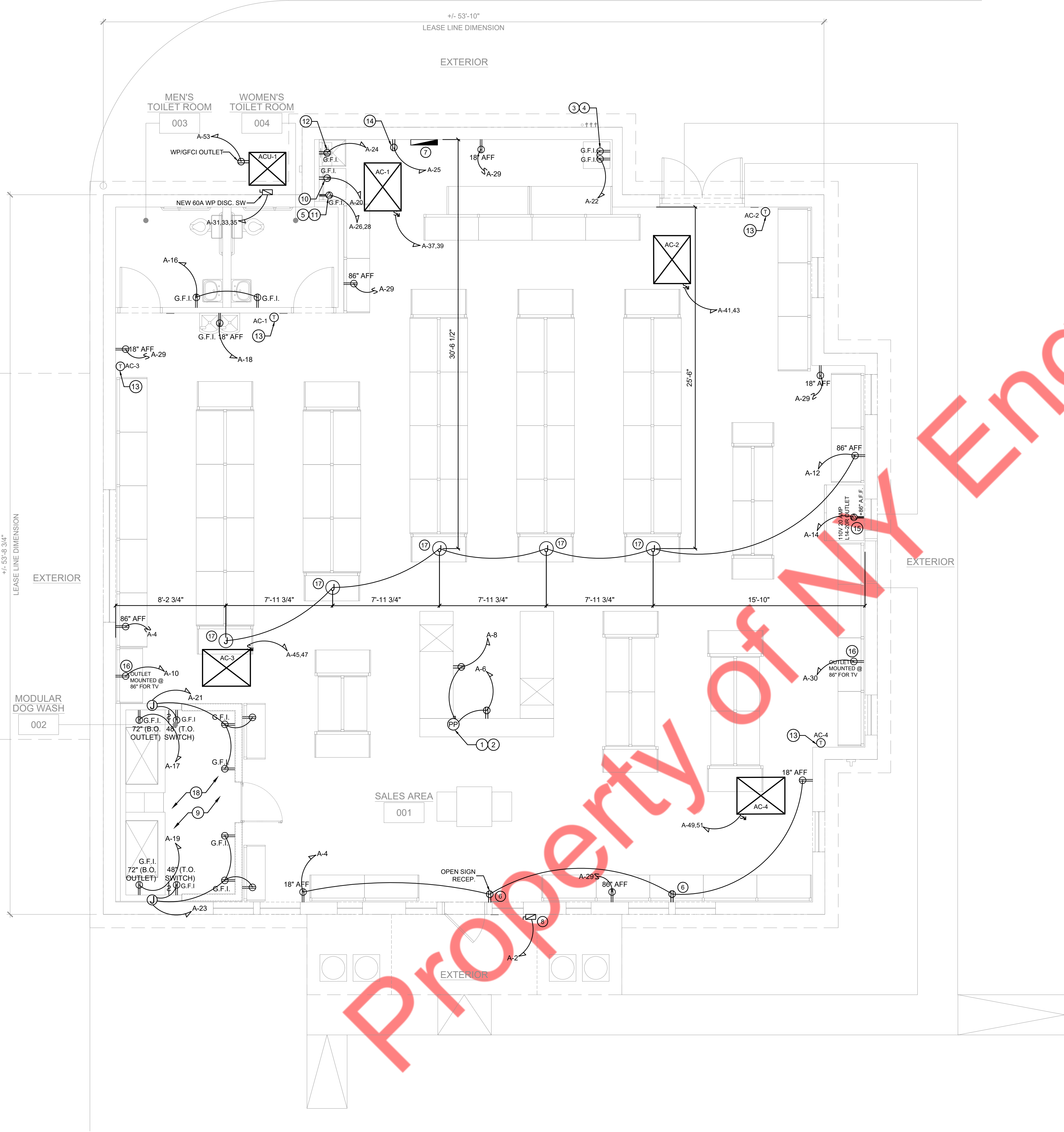
| MARK | FACE SIZE | TYPE   | MOUNTING TYPE | MAXIMUM N.C. | DIRECTION | MANUFACTURER | MODEL | NOTES |
|------|-----------|--------|---------------|--------------|-----------|--------------|-------|-------|
| CD   | 12X12     | SUPPLY | CEILING       | 30           | 4-WAY     | TITUS        | TMS   | 1,2,3 |
| SD-1 | 12X8      | SUPPLY | SURFACE       | 30           | 1-WAY     | TITUS        | 300RL | 1,2,3 |

- NOTES: (NOT ALL MAY APPLY)  
1. PROVIDE NECESSARY MOUNTING HARDWARE AND ACCESSORIES AS REQUIRED FOR INTENDED INSTALLATION.  
2. AIR DEVICE(S) SHALL BE FACTORY FINISHED #26 WHITE.  
3. AIR DEVICE(S) SHALL BE INSTALLED WITH MANUFACTURER AVAILABLE MOLDED INSULATION BACKING. FIELD FABRICATED INSULATION BACKING IS NOT ALLOWED (UNLESS FIRST APPROVED BY THE OWNER'S CONSTRUCTION MANAGER).

KEY NOTES

- VERIFY FINAL PLACEMENT OF 24/7 EXISTING PROGRAMMABLE THERMOSTAT AND NEW TEMPERATURE SENSORS WITH ARCHITECTURAL FLOOR PLAN AND INTERIOR ELEVATIONS.
- PROVIDE NEW CEILING MOUNTED CABINET FAN FOR EXHAUST. ROUTE THE BRANCH EXHAUST DUCT TO MAIN EXHAUST DUCT TO EXTERIOR OF BUILDING. FAN SHALL BE INTERLOCKED WITH RESTROOM LIGHT SWITCH FOR SIMULTANEOUS OPERATION.
- PROVIDE NEW CEILING MOUNTED CABINET FAN AT 11'-0" AFF FOR EXHAUST. FAN SHALL BE CONTROLLED BY AN INDEPENDENT SWITCH LOCATED INSIDE THE DOG WASH STATION.
- ROUTE NEW EXHAUST DUCT UP THROUGH ROOF WITH ROOF CAP AND INSECT SCREEN. MAINTAIN MINIMUM 10'-0" CLEARANCE FROM ALL AIR INTAKES AND BUILDING OPENINGS. COORDINATE ALL ROOF MODIFICATIONS WITH LANDLORD REPRESENTATIVE AND LANDLORD ROOFING CONTRACTOR.
- ROUTE 3"PVC FLUE VENT AND 3" PVC COMBUSTION AIR INTAKE OUT THRU EXTERIOR WALL AND TERMINATE PER MANUFACTURER'S INSTRUCTION.
- CONN 4" GALVANIZED SHEET METAL (26 GA.) CLOTHES DRYER DUCT FROM CLOTHES DRYER AND ROUTE AS SHOWN THROUGH EXTERIOR WALL @ 10'-0" FINISHED ELEVATION AND TERMINATE WITH DRYER VENT CAP WITH BACKDRAFT DAMPER (NO SCREWS). MAINTAIN A MIN. DISTANCE OF 10'-0" AWAY FROM ALL FRESH AIR INTAKES AND BUILDING OPENINGS.
- RETURN AIR INTAKE OPENING THROUGH CEILING DIFFUSERS.
- UNDERCUT DOOR 1" FOR TRANSFER AIR.





**POWER KEY NOTES**

|   |   |    |  |
|---|---|----|--|
| 1 | PROVIDE (2) SEPARATE IG 20 AMP CIRCUITS TO DUPLEX RECEPTACLES ON POWER POLE. POWER POLE TO BE WIRE MOLDING (WM 25DTD-4D). POWER POLE SHALL NOT BE PERMANENTLY ANCHORED UNTIL TENANT MILLWORK IS COMPLETE.                                       | 9  | PET VALU VENDOR TO PROVIDE OUTLETS AND SWITCH IN MODULAR DOG WASH STATION.   |
| 2 | PROVIDE (7) CAT5 LINES FROM DVR CABINET TO J-BOX. PROVIDE EXTRA 40 FEET OF CABLE AT J-BOX. PROVIDE EXTRA 20 FEET OF CABLE AT DVR CABINET.   | 10 | DUPLEX RECEPTACLE FOR GAS FIRED HOT WATER HEATER. CONTRACTOR TO VERIFY EXACT LOCATION IN FIELD.  |
| 3 | PROVIDE (1) CAT5 LINE FROM DEMARO TO DVR CABINET. PROVIDE EXTRA 20 FEET OF CABLE AT EACH END.   | 11 | NEMA 14-30R 30AMP 220V RECEPTACLE FOR DRYER TO BE MOUNTED AT 60" A.F.F.  |
| 4 | (1) IG RECEP AT 4'-0" AFF AND (1) IG RECEP AT 8'-0" AFF.  | 12 | DUPLEX RECEPTACLE FOR WASHER MOUNTED AT 36" A.F.F.   |
| 5 | COORDINATE EXACT ELECTRICAL REQUIREMENTS WITH ACTUAL EQUIPMENT IN FIELD PRIOR TO INSTALLATION.  | 13 | THERMOSTAT FOR AC-1, AC-2, AC-3 AND AC-4. REFER TO MECHANICAL DRAWINGS FOR MORE INFORMATION.   |
| 6 | RECEPTACLE MOUNTED 6" ABOVE THE TOP OF THE STOREFRONT WINDOW PER NEC.   | 14 | RECEPTACLE FOR TELEPHONE. CONTRACTOR TO VERIFY EXACT LOCATION IN FIELD.  |
| 7 | NEW ELECTRICAL PANEL 'A' - 120/208V-3PH-4W S4 POLES REFER TO RISER DIAGRAM FOR MORE INFORMATION.  | 15 | PET VALU G.C. TO PROVIDE AND INSTALL POWER FOR FREEZER.  |
| 8 | 30 AMP DISCONNECT SWITCH WITH LOCK-OFF CAPABILITY FOR STOREFRONT SIGN. VERIFY EXACT LOCATION AND ELECTRICAL REQUIREMENTS FOR CONNECTION TO STOREFRONT SIGN. (LANDLORD TO PROVIDE/INSTALL CONNECTIONS. PET VALU TO PROVIDE/INSTALL TENANT SIGN). | 16 | SINGLE CAT5e LINE FROM DVR CABINET TO LOW VOLTAGE BOX AT 86" AFF BY TV OUTLET. 10' COIL AT LOW VOLTAGE BOX AND 20' COIL AT DVR CABINET.  |
|   |   | 17 | JUNCTION BOX TO BE MOUNTED ON CEILING, CONDUIT AND WIRE FOR OUTLET TO BE INSTALLED ON FIXTURE AT 80" A.F.F. AFTER FIXTURE INSTALLATION. GC TO COORDINATE LOCATION AND TIMING WITH PET VALU CONSTRUCTION MANAGER. |
|   |   | 18 | REFER TO DOG WASH DETAIL P3.0.   |

**POWER GENERAL NOTES**

|    |  |
|----|--|
| 1. | INSTALL ALL PIPE, ETC. AS HIGH AS POSSIBLE.  |
| 2. | COORDINATE ALL WORK WITH OTHER TRADES AND EXISTING CONDITIONS AS REQUIRED TO PROPERLY INSTALL ALL SYSTEMS AS INTENDED, WITHIN THE CONFINES OF THE SPACE AVAILABLE, AND WITHOUT INTERFERENCES.                  |
| 3. | REFER TO ARCHITECTURAL DRAWINGS FOR EXACT LOCATIONS AND MOUNTING HEIGHTS OF FIXTURES.  |
| 4. | NO PIPING SHALL BE ROUTED OVER THE TOP OF THE ELECTRICAL PANELS.   |
| 5. | ALL MATERIALS EXPOSED WITHIN PLENUMS SHALL BE NONCOMBUSTIBLE OR SHALL HAVE A FLAME SPREAD INDEX OF NOT MORE THAN 25 AND A SMOKE-DEVELOPMENT INDEX OF NOT MORE THAN 50 WHEN TESTED IN ACCORDANCE WITH ASTM E84. |
| 6. | GC TO PROVIDE ELECTRICAL DISCONNECTS PER LOCAL AND/OR STATE CODES TO ALL SIGNS. COORDINATE WITH SIGN VENDOR PRIOR TO INSTALLATION.   |
| 7. | LIGHT SWITCHES, OUTLETS, AND ALL COVER PLATES TO BE ALMOND IN COLOR.   |

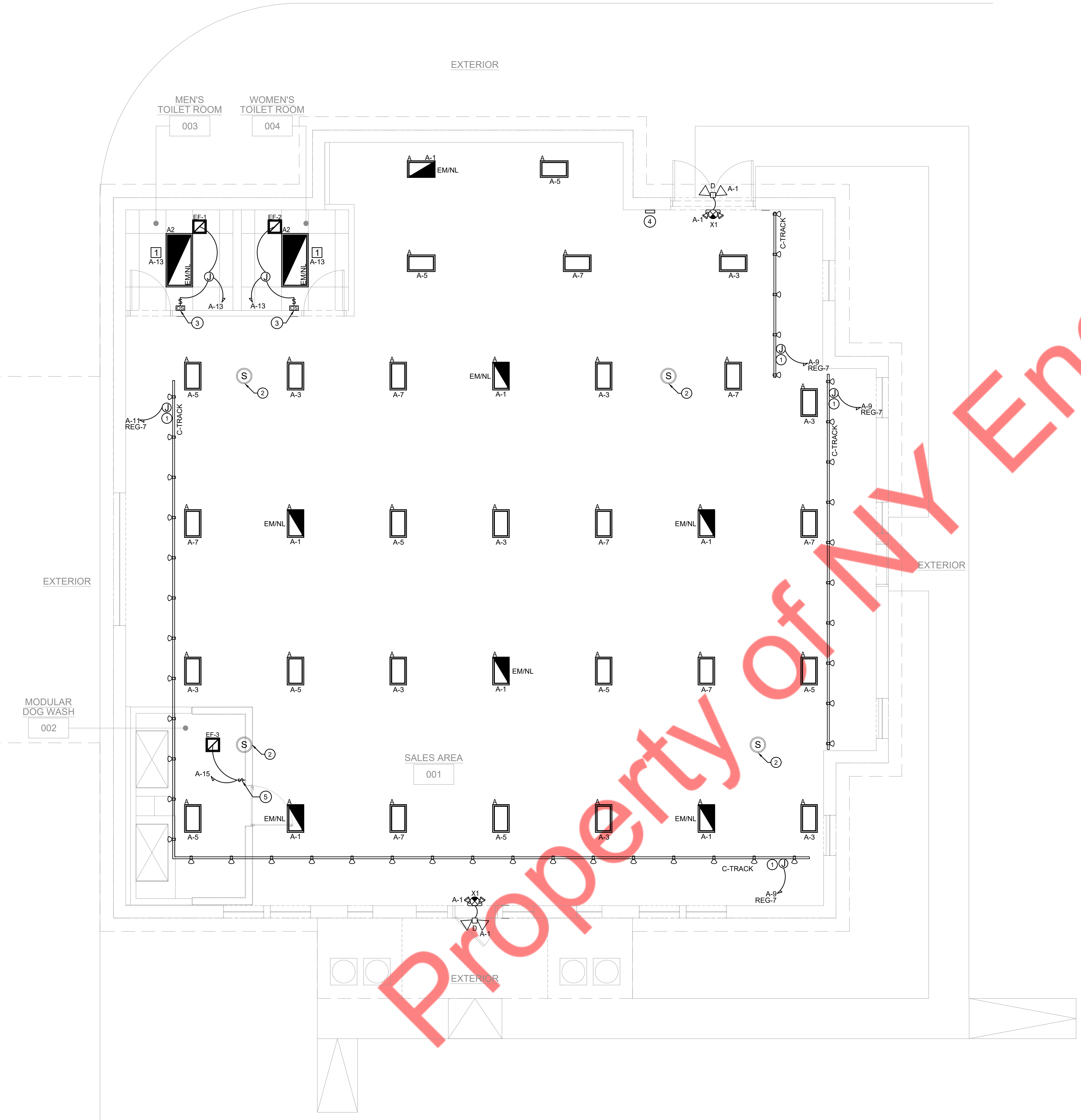
| LIGHTING KEYED NOTES |   |
|----------------------|---|
| ①                    | NEW TRACK LIGHTING. CONNECT TO CIRCUITS INDICATED. PROVIDE (1) SINGLE POLE 20 AMP BREAKER FROM PANEL AS NEEDED FOR A FULLY FUNCTIONING SYSTEM. PROVIDE LOCAL SWITCHING FOR TRACK LIGHTING PER CIRCUIT AT LOCATION OF SWITCH BANK, COORDINATE LOCATION WITH PROJECT MANAGER PRIOR TO ANY WORK.                                     |
| ②                    | SPEAKER WIRED WITH 14 GA. SPEAKER CABLE TO DVR CABINET LOCATION. PROVIDE 20 FEET OF CABLE AT DVR CABINET SPEAKER TO BE OPEN CEILING. YAMAHA NS-AW150 BLACK OR SIMILAR. GRID CEILING. LEGRAND 364764-02-V 6.5" SPEAKERS TO BE SUPPLIED AND INSTALLED BY G.C.<br><br>MAXIMUM (2) TWO SPEAKER TO BE INSTALLED ON ANY SINGLE CHANNEL. |
| ③                    | PROVIDE WALL MOUNTED, ULTRASONIC OCCUPANCY SENSOR WITH MANUAL BY-PASS.  |
| ④                    | MASTER LIGHTING SWITCH BANK. COORDINATE LOCATION OF SWITCHES WITH CONSTRUCTION MANAGER. REFER TO SHEET E3.0 DETAIL #2 FOR SWITCH DESIGNATION.   |
| ⑤                    | SWITCH FOR DOG WASH EXHAUST FAN. COORDINATE EXACT LOCATION WITH PET VALU CONSTRUCTION MANAGER.  |

CONTRACTOR TO FURNISH AND INSTALL CURRENT LIMITERS TO LIMIT THE WATTAGE AVAILABLE FOR THE TRACK. CONTRACTOR TO UTILIZE CON-TECH LIGHTING LA-23-R (TITLE 24 COMPLIANT-CALIF. ONLY) OR LA-23-RN (NON-TITLE 24 COMPLIANT) CURRENT LIMITING DEVICE OR EQUIVALENT.

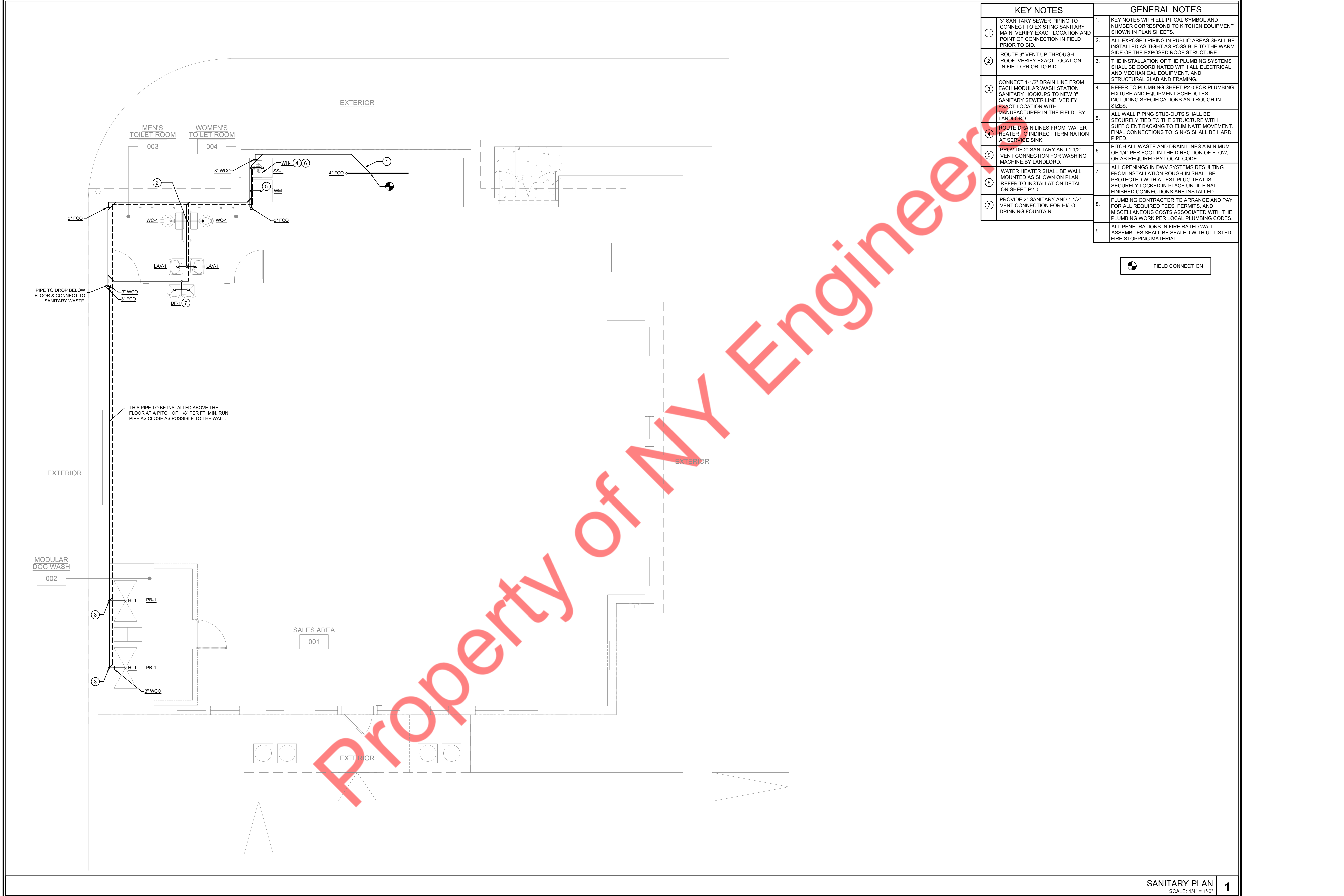
| CON-TECH CURRENT LIMITING DEVICES |        |       |
|-----------------------------------|--------|-------|
| REG-05                            | 60W    | 0.5A  |
| REG-1                             | 120W   | 1A    |
| REG-2                             | 210W   | 1.75A |
| REG-21                            | 240W   | 2A    |
| REG-3                             | 300W   | 2.5A  |
| REG-4                             | 360W   | 3A    |
| REG-5                             | 480W   | 4A    |
| REG-6                             | 600W   | 5A    |
| REG-7                             | 720W   | 6A    |
| REG-8                             | 840W   | 7A    |
| REG-9                             | 900W   | 7.5A  |
| REG-91                            | 960W   | 8A    |
| REG-10                            | 1,200W | 10A   |
| REG-12                            | 1,440W | 12A   |
| REG-14                            | 1,680W | 14A   |

| LIGHTING GENERAL NOTES |  |
|------------------------|--|
| 1                      | REFER TO ARCHITECTURAL REFLECTED CEILING PLAN FOR EXACT FIXTURE LOCATIONS.   |
| 2                      | REFER TO LIGHTING FIXTURE SCHEDULE ON SHEET E3.0 FOR FIXTURE SPECIFICATIONS.   |
| 3                      | FINAL ARRANGEMENT OF EACH FIXTURE (AIMING) SHALL BE PROVIDED TO THE OWNER REPRESENTATIVE AFTER THE FIXTURE IS INSTALLED.     |
| 4                      | UNLESS NOTED OTHERWISE ON THE PLAN ALL ELECTRICAL LIGHT FIXTURE HEIGHTS SHALL BE FOLLOWED PER THE LIGHTING FIXTURE SCHEDULE. |
| 5                      | ALL EMERGENCY LIGHTING AND EXIT SIGNAGE SHALL BE CONNECTED AHEAD OF SWITCHING FOR CONTINUOUS OPERATION.                      |
| 6                      | PLENUM RATED CABLE TO BE USED WHERE REQUIRED WITHIN PLENUM RATED SPACES ABOVE CEILING.                                       |
| 7                      | ALL OUTLET AND SWITCH PLATE COVERS TO BE ALMOND.   |

① LIGHTING NOTE:  
NEC 2014 SECTION 700.12 (F)  
ALL UNIT EQUIPMENT (EMERGENCY LIGHTING) SHALL BE WIRED AHEAD OF SWITCH OR CONTROL OF NORMAL LIGHTING CIRCUIT SERVING THAT AREA. THE BRANCH CIRCUIT FEEDING THE UNIT EQUIPMENT SHALL BE THE SAME BRANCH CIRCUIT AS THAT SERVING THE NORMAL LIGHTING IN THE AREA AND CONNECTED AHEAD OF ANY LOCAL SWITCHES. THE BRANCH CIRCUIT THAT FEEDS UNIT EQUIPMENT SHALL BE CLEARLY IDENTIFIED AT THE DISTRIBUTION PANEL IN A SEPARATE AND UNINTERRUPTED AREA SUPPLIED BY A MINIMUM OF THREE NORMAL LIGHTING CIRCUITS. A SEPARATE BRANCH CIRCUIT FOR UNIT EQUIPMENT SHALL BE FROM THE SAME PANELBOARD AS THAT OF THE NORMAL LIGHTING CIRCUITS AND PROVIDED WITH A LOCK-ON FEATURE.







| KEY NOTES |   | GENERAL NOTES |   |
|-----------|---|---------------|---|
| 1         | 3" SANITARY SEWER PIPING TO CONNECT TO EXISTING SANITARY MAIN. VERIFY EXACT LOCATION AND POINT OF CONNECTION IN FIELD PRIOR TO BID.   | 1.            | KEY NOTES WITH ELLIPTICAL SYMBOL AND NUMBER CORRESPOND TO KITCHEN EQUIPMENT SHOWN IN PLAN SHEETS.   |
| 2         | ROUTE 3" VENT UP THROUGH ROOF. VERIFY EXACT LOCATION IN FIELD PRIOR TO BID.   | 2.            | ALL EXPOSED PIPING IN PUBLIC AREAS SHALL BE INSTALLED AS TIGHT AS POSSIBLE TO THE WARM SIDE OF THE EXPOSED ROOF STRUCTURE.  |
| 3         | CONNECT 1-1/2" DRAIN LINE FROM EACH MODULAR WASH STATION SANITARY HOOKUPS TO NEW 3" SANITARY SEWER LINE. VERIFY EXACT LOCATION WITH MANUFACTURER IN THE FIELD. BY LANDLORD. | 3.            | THE INSTALLATION OF THE PLUMBING SYSTEMS SHALL BE COORDINATED WITH ALL ELECTRICAL AND MECHANICAL EQUIPMENT, AND STRUCTURAL SLAB AND FRAMING.  |
| 4         | ROUTE DRAIN LINES FROM WATER HEATER TO INDIRECT TERMINATION AT SERVICE SINK.  | 4.            | REFER TO PLUMBING SHEET P2.0 FOR PLUMBING FIXTURE AND EQUIPMENT SCHEDULES INCLUDING SPECIFICATIONS AND ROUGH-IN SIZES.  |
| 5         | PROVIDE 2" SANITARY AND 1 1/2" VENT CONNECTION FOR WASHING MACHINE BY LANDLORD.   | 5.            | ALL WALL PIPING STUB-OUTS SHALL BE SECURELY TIED TO THE STRUCTURE WITH SUFFICIENT BACKING TO ELIMINATE MOVEMENT. FINAL CONNECTIONS TO SINKS SHALL BE HARD PIPED.                      |
| 6         | WATER HEATER SHALL BE WALL MOUNTED AS SHOWN ON PLAN. REFER TO INSTALLATION DETAIL ON SHEET P2.0.  | 6.            | PITCH ALL WASTE AND DRAIN LINES A MINIMUM OF 1/4" PER FOOT IN THE DIRECTION OF FLOW, OR AS REQUIRED BY LOCAL CODE.  |
| 7         | PROVIDE 2" SANITARY AND 1 1/2" VENT CONNECTION FOR HI/LO DRINKING FOUNTAIN.   | 7.            | ALL OPENINGS IN DWV SYSTEMS RESULTING FROM INSTALLATION ROUGH-IN SHALL BE PROTECTED WITH A TEST PLUG THAT IS SECURELY LOCKED IN PLACE UNTIL FINAL FINISHED CONNECTIONS ARE INSTALLED. |
|           |   | 8.            | PLUMBING CONTRACTOR TO ARRANGE AND PAY FOR ALL REQUIRED FEES, PERMITS, AND MISCELLANEOUS COSTS ASSOCIATED WITH THE PLUMBING WORK PER LOCAL PLUMBING CODES.                            |
|           |   | 9.            | ALL PENETRATIONS IN FIRE RATED WALL ASSEMBLIES SHALL BE SEALED WITH UL LISTED FIRE STOPPING MATERIAL.   |

FIELD CONNECTION

| KEY NOTES |  |
|-----------|--|
| ①         | EXTEND NEW 1-1/2" CW TO EXISTING CW MAIN OF ADEQUATE SIZE. VERIFY EXACT LOCATION IN FIELD PRIOR TO BID.  |
| ②         | CONNECT 1" CW AND HW LINES TO MODULAR WASH STATION WATER HOOKUPS. VERIFY EXACT LOCATION WITH MANUFACTURER IN THE FIELD.  |
| ③         | INSTALL HOT AND COLD WATER SHUTOFF VALVES.   |
| ④         | ALL PET BAY FAUCET (T & S BRASS B-0669-PCL) ARE PROVIDED AND INSTALLED BY VENDOR.  |
| ⑤         | WATER HEATER SHALL BE WALL MOUNTED AS SHOWN ON PLAN. REFER TO INSTALLATION DETAIL ON SHEET P2.0 BY TENANT.   |
| ⑥         | PROVIDE BACKFLOW PROTECTION. SEE SHEET P3.0 RISER DIAGRAM.   |
| ⑦         | EXTEND 1/2" HW & CW TO WASHING MACHINE AND SERVICE SINK.   |
| ⑧         | ALL PET BAYS SUPPLIED BY T.G.C. WITH MIXING VALVES SET AT MAXIMUM 110F. THROUGH AAPEX CREATIONS INC. INSTALLATION TO BE DONE BY VENDOR AAPEX CREATIONS INC. T.G.C. TO COORDINATE. FINAL CONNECTIONS BY T.G.C.-BY TENANT. |
| ⑨         | EXTEND 1/2" CW TO HILO DRINKING FOUNTAIN.  |

