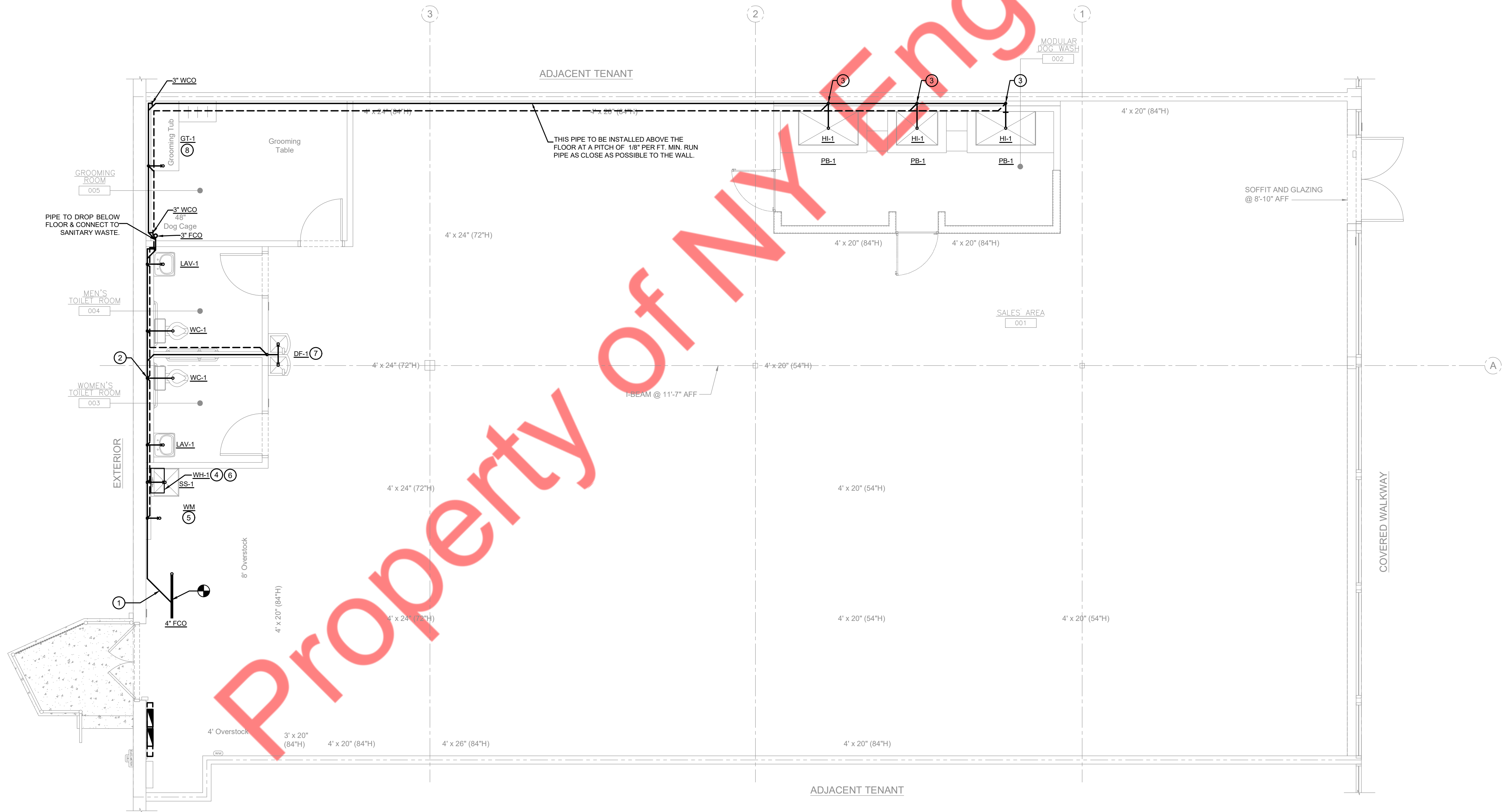
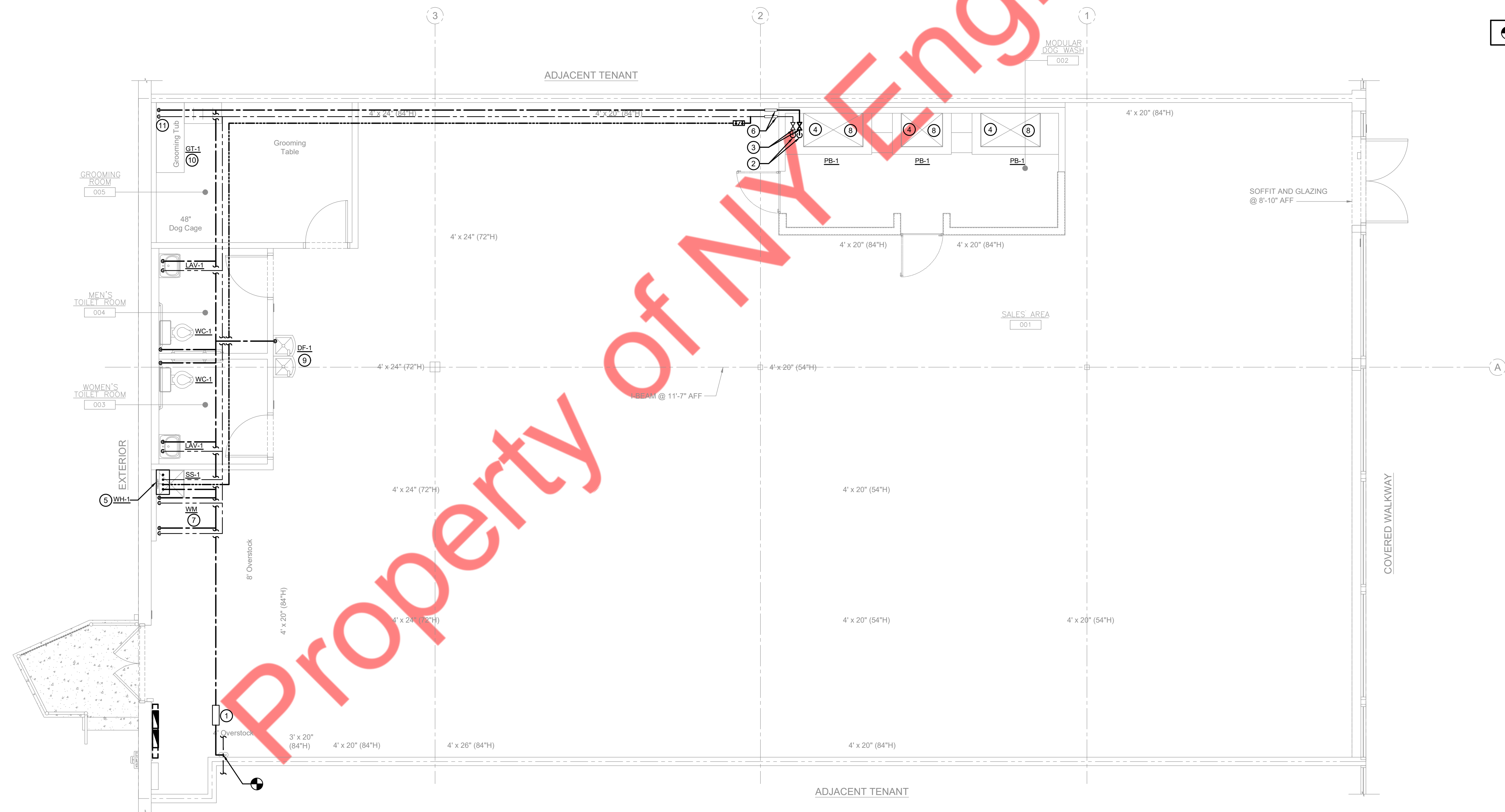


KEY NOTES		GENERAL NOTES	
①	3" SANITARY SEWER PIPING TO CONNECT TO EXISTING SANITARY MAIN. VERIFY EXACT LOCATION AND POINT OF CONNECTION IN FIELD PRIOR TO BID.	1.	KEY NOTES WITH ELLIPTICAL SYMBOL AND NUMBER CORRESPOND TO KITCHEN EQUIPMENT SHOWN IN PLAN SHEETS.
②	ROUTE 3" VENT UP THROUGH ROOF. VERIFY EXACT LOCATION IN FIELD PRIOR TO BID.	2.	ALL EXPOSED PIPING IN PUBLIC AREAS SHALL BE INSTALLED AS TIGHT AS POSSIBLE TO THE WARM SIDE OF THE EXPOSED ROOF STRUCTURE.
③	CONNECT 1-1/2" DRAIN LINE FROM EACH MODULAR WASH STATION SANITARY HOOKUPS TO NEW 3" SANITARY SEWER LINE. VERIFY EXACT LOCATION WITH MANUFACTURER IN THE FIELD.	3.	THE INSTALLATION OF THE PLUMBING SYSTEMS SHALL BE COORDINATED WITH ALL ELECTRICAL AND MECHANICAL EQUIPMENT, AND STRUCTURAL SLAB AND FRAMING.
④	ROUTE DRAIN LINES FROM WATER HEATER TO INDIRECT TERMINATION AT SERVICE SINK.	4.	REFER TO PLUMBING SHEET P2.0 FOR PLUMBING FIXTURE AND EQUIPMENT SCHEDULES INCLUDING SPECIFICATIONS AND ROUGH-IN SIZES.
⑤	PROVIDE 2" SANITARY AND 1 1/2" VENT CONNECTION FOR WASHING MACHINE.	5.	ALL WALL PIPING STUB-OUTS SHALL BE SECURELY TIED TO THE STRUCTURE WITH SUFFICIENT BACKING TO ELIMINATE MOVEMENT. FINAL CONNECTIONS TO SINKS SHALL BE HARD PIPED.
⑥	WATER HEATER SHALL BE WALL MOUNTED AS SHOWN ON PLAN. REFER TO INSTALLATION DETAIL ON SHEET P2.0.	6.	PITCH ALL WASTE AND DRAIN LINES A MINIMUM OF 1/4" PER FOOT IN THE DIRECTION OF FLOW, OR AS REQUIRED BY LOCAL CODE.
⑦	PROVIDE 2" SANITARY AND 1 1/2" VENT CONNECTION FOR HI/LO DRINKING FOUNTAIN.	7.	ALL OPENINGS IN DWV SYSTEMS RESULTING FROM INSTALLATION ROUGH-IN SHALL BE PROTECTED WITH A TEST PLUG THAT IS SECURELY LOCKED IN PLACE UNTIL FINAL FINISHED CONNECTIONS ARE INSTALLED.
⑧	PROVIDE 2" SANITARY AND 1 1/2" VENT CONNECTION FOR GROOMING TUB.	8.	PLUMBING CONTRACTOR TO ARRANGE AND PAY FOR ALL REQUIRED FEES, PERMITS, AND MISCELLANEOUS COSTS ASSOCIATED WITH THE PLUMBING WORK PER LOCAL PLUMBING CODES.
		9.	ALL PENETRATIONS IN FIRE RATED WALL ASSEMBLIES SHALL BE SEALED WITH UL LISTED FIRE STOPPING MATERIAL.





KEY NOTES	
①	EXTEND NEW 1-1/2" CW TO EXISTING CW MAIN OF ADEQUATE SIZE. VERIFY EXACT LOCATION IN FIELD PRIOR TO BID.
②	CONNECT 1" CW AND HW LINES TO MODULAR WASH STATION WATER HOOKUPS. VERIFY EXACT LOCATION WITH MANUFACTURER IN THE FIELD.
③	INSTALL HOT AND COLD WATER SHUTOFF VALVES.
④	ALL PET BAY FAUCET (T & S BRASS 8-0669-PCL) ARE PROVIDED AND INSTALLED BY VENDOR.
⑤	WATER HEATER SHALL BE WALL MOUNTED AS SHOWN ON PLAN. REFER TO INSTALLATION DETAIL ON SHEET P2.0.
⑥	PROVIDE BACKFLOW PROTECTION. SEE SHEET P3.0 RISER DIAGRAM.
⑦	EXTEND 1/2" HW & CW TO WASHING MACHINE AND SERVICE SINK.
⑧	ALL PET BAYS SUPPLIED BY T.G.C. WITH MIXING VALVES SET AT MAXIMUM 110°F. THROUGH AAPEX CREATIONS INC. INSTALLATION TO BE DONE BY VENDOR AAPEX CREATIONS INC. T.G.C. TO COORDINATE. FINAL CONNECTIONS BY T.G.C.
⑨	EXTEND 1/2" CW TO HI/LO DRINKING FOUNTAIN.
⑩	GROOMING TUB, FURNISHED BY TENANT AND INSTALLED BY G.C.
⑪	EXTEND 1/2" CW AND HW LINE TO GROOMING TUB.



- Epoxy Adhesive Used For The Flooring In The DogWash Area
- Three Drains Located At Positions Shown
- Hot And Cold Water Connections With Shutoffs
- Plumber Will Have To Complete All Water And Drain Connections
- 4 - 20amp Circuits (2 At Either End - 6ft Whips To Be Installed Into J-Boxes On The DogWash)
- Electrician Will Have To Complete All Connections

[illegible]

2

①	EXTEND NEW 1-1/2" CW TO EXISTING CW MAIN OF APPROXIMATE SIZE. VERIFY EXACT LOCATION IN FIELD PRIOR TO BID.
②	CONNECT 3/4" CW AND HW LINES TO MODULAR WASH STATION WATER HOOKUPS. VERIFY EXACT LOCATION WITH MANUFACTURER IN THE FIELD.
③	INSTALL HOT AND COLD WATER SHUTOFF VALVES.
④	ALL PET BAY FAUCET (T & S BRASS B-0669-PC1) ARE PROVIDED AND INSTALLED BY VENDOR.
⑤	WATER HEATER SHALL BE WALL MOUNTED AS SHOWN ON PLAN. REFER TO INSTALLATION DETAIL ON SHEET P2.0.
⑥	PROVIDE BACKFLOW PROTECTION.
⑦	EXTEND 1/2" HW & CW TO WASHING MACHINE AND SERVICE SINK.
⑧	ALL PET BAYS SUPPLIED BY T.G.C. WITH MIXING VALVES SET AT MAXIMUM 110F. THROUGH APEX CREATIONS INC. INSTALLATION TO BE DONE BY VENDOR APEX CREATIONS INC. T.G.C. TO COORDINATE. FINAL CONNECTIONS BY T.G.C.
⑨	GENERAL CONTRACTOR FURNISHED AND INSTALLED WATTS LFMMV HOT WATER TEMPERATURE CONTROL VALVE AT EACH LAVATORY.
⑩	3" SANITARY SEWER PIPING TO CONNECT TO EXISTING SANITARY MAIN. VERIFY EXACT LOCATION AND POINT OF CONNECTION IN FIELD PRIOR TO BID.
⑪	ROUTE 3" VENT UP THROUGH ROOF. VERIFY EXACT LOCATION IN FIELD PRIOR TO BID.
⑫	CONNECT 1-1/2" DRAIN LINE FROM EACH MODULAR WASH STATION SANITARY HOOKUPS TO NEW 3" SANITARY SEWER LINE. VERIFY EXACT LOCATION WITH MANUFACTURER IN THE FIELD.
⑬	ROUTE DRAIN LINES FROM WATER HEATER TO INDIRECT TERMINATION AT SERVICE SINK.
⑭	PROVIDE 2" SANITARY AND 1 1/2" VENT CONNECTION FOR WASHING MACHINE
⑮	PROVIDE 2" SANITARY AND 1 1/2" VENT CONNECTION FOR HI/LO DRINKING FOUNTAIN.
⑯	EXTEND 1/2" CW TO HI/LO DRINKING FOUNTAIN.

ISOMETRIC RISER DIAGRAM
SCALE: NONE