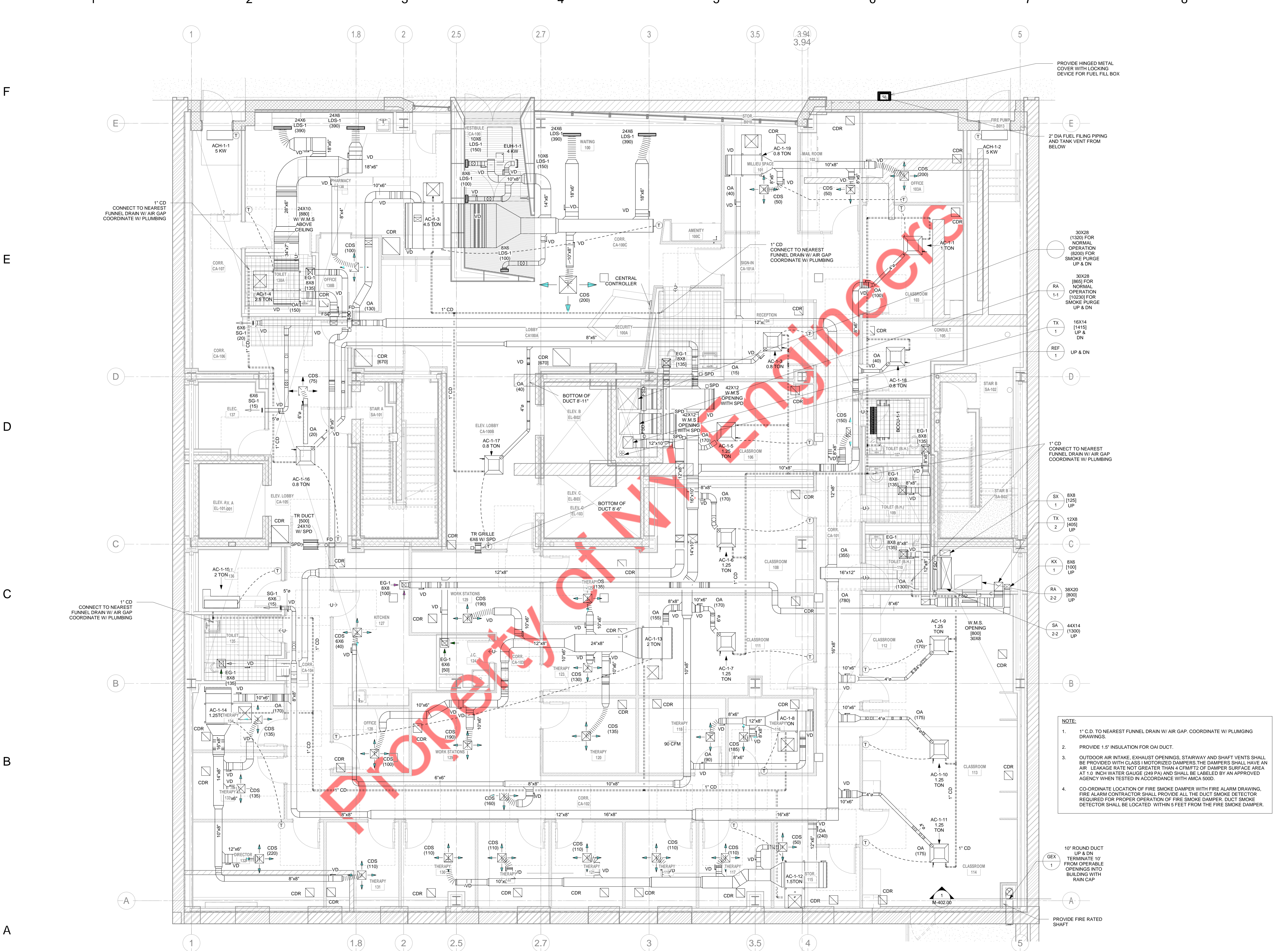


- 2" DIA FUEL PIPING AND TANK VENT UP
 - PROVIDE 2-HR RATED ENCLOSURE FOR FUEL PIPING OUTSIDE THE GENERATOR ROOM
 - 30X28 (860) FOR NORMAL OPERATION (8200) FOR SMOKE PURGE UP
 - RA 1-1 30X28 (10230) UP WITH SMOKE PURGE DAMPER
 - TX 1 14X10 (665) UP
 - REF 1 UP
 - PIPING TO BE SLOPED 1/8"12"
- NOTE:**
1. 1" C.D. TO NEAREST FUNNEL DRAIN W/ AIR GAP. COORDINATE W/ PLUMBING DRAWINGS.
 2. PROVIDE 1.5" INSULATION FOR OAI DUCT.
 3. OUTDOOR AIR INTAKE, EXHAUST OPENINGS, STAIRWAY AND SHAFT VENTS SHALL BE PROVIDED WITH CLASS I MOTORIZED DAMPERS. THE DAMPERS SHALL HAVE AN AIR LEAKAGE RATE NOT GREATER THAN 4 CFM/F² OF DAMPER SURFACE AREA AT 1.0 INCH WATER GAUGE (249 PA) AND SHALL BE LABELED BY AN APPROVED AGENCY WHEN TESTED IN ACCORDANCE WITH AMCA 500D.
 4. LOCATE TRASH EXHAUST OPENING 3 FEET AWAY FROM LOT LINE AND MINIMUM 7 FEET ABOVE GRADE LEVEL.
 5. CO-ORDINATE LOCATION OF FIRE SMOKE DAMPER WITH FIRE ALARM DRAWING. FIRE ALARM CONTRACTOR SHALL PROVIDE ALL THE DUCT SMOKE DETECTOR REQUIRED FOR PROPER OPERATION OF FIRE SMOKE DAMPER. DUCT SMOKE DETECTOR SHALL BE LOCATED WITHIN 5 FEET FROM THE FIRE SMOKE DAMPER.
- PROVIDE SOFFIT AT 7'-0" FEET HEIGHT TO ACCOMMODATE THE BEAM AND DUCT
 - SEX 1 8X8 (125) UP
 - CO DETECTOR
 - 300 kVA GENERATOR BY ELECTRICAL CONTRACTOR REFER TO M-401 SHEET FOR DETAILS. LOCATED ON SPRING TYPE VIBRATION ISOLATOR ANCHORED WITH TYPE J OR L BOLTS
 - 160 GALLONS OF DIESEL TANK 40"WX30"Dx44"H
 - MUFFLER LEAK DETECTOR
 - FUEL PIPE SHALL BE PITCHED TOWARDS THE GENERATOR SOUND ATTENUATOR
 - CO DETECTOR EUH-C-10 2 KW
 - HORIZONTAL DUCT NEEDS TO SLOPE DOWNWARDS AWAY FROM ENGINE TO CONDENSATE TRAP
 - PROVIDE EXHAUST THIMBLE AT THE WALL PENETRATION
 - PROVIDE CONDENSATE DRAIN WITH TRAP TO BE LOCATED BEFORE EXHAUST PIPE TURN TO RISE VERTICALLY
 - 10" ROUND DUCT UP PROVIDE CLEANOUT AT BOTTOM OF RISER.
 - PROVIDE FIRE RATED SHAFT

- 1" CD CONNECT TO NEAREST ANTISPLASH DRAIN W/ AIR GAP COORDINATE W/ PLUMBING
- 1" CD CONNECT TO NEAREST ANTISPLASH DRAIN W/ AIR GAP COORDINATE W/ PLUMBING
- 1" CD FURNEL DRAIN W/ AIR GAP COORDINATE W/ PLUMBING
- PROVIDE CONDENSATE DRAIN
- 1" CD FURNEL DRAIN W/ AIR GAP COORDINATE W/ PLUMBING
- OUTSIDE AIR INTAKE DUCT TERMINATE 10 FEET AWAY FROM ANY EXHAUST AND LOT LINE WITH GOOSENECK

NOTE:

1. 1" C.D. TO NEAREST FUNNEL DRAIN W/ AIR GAP. COORDINATE W/ PLUMBING DRAWINGS.
2. PROVIDE 1.5" INSULATION FOR OAI DUCT.
3. OUTDOOR AIR INTAKE, EXHAUST OPENINGS, STAIRWAY AND SHAFT VENTS SHALL BE PROVIDED WITH CLASS I MOTORIZED DAMPERS. THE DAMPERS SHALL HAVE AN AIR LEAKAGE RATE NOT GREATER THAN 4 CFM/F² OF DAMPER SURFACE AREA AT 1.0 INCH WATER GAUGE (249 PA) AND SHALL BE LABELED BY AN APPROVED AGENCY WHEN TESTED IN ACCORDANCE WITH AMCA 500D.
4. LOCATE TRASH EXHAUST OPENING 3 FEET AWAY FROM LOT LINE AND MINIMUM 7 FEET ABOVE GRADE LEVEL.
5. CO-ORDINATE LOCATION OF FIRE SMOKE DAMPER WITH FIRE ALARM DRAWING. FIRE ALARM CONTRACTOR SHALL PROVIDE ALL THE DUCT SMOKE DETECTOR REQUIRED FOR PROPER OPERATION OF FIRE SMOKE DAMPER. DUCT SMOKE DETECTOR SHALL BE LOCATED WITHIN 5 FEET FROM THE FIRE SMOKE DAMPER.



PROVIDE HINGED METAL COVER WITH LOCKING DEVICE FOR FUEL FILL BOX

2" DIA FUEL FILING PIPING AND TANK VENT FROM BELOW

- 30X28 (1320) FOR NORMAL OPERATION (8200) FOR SMOKE PURGE UP & DN
- 30X28 (865) FOR NORMAL OPERATION (10230) FOR SMOKE PURGE UP & DN
- 16X14 (1415) UP & DN
- REF 1 UP & DN

1" CD CONNECT TO NEAREST FUNNEL DRAIN W/ AIR GAP COORDINATE W/ PLUMBING

- 8X8 (125) UP
- 12X8 (405) UP
- 8X6 (100) UP
- 38X20 (800) UP
- 44X14 (1300) UP

- NOTE:**
1. 1" C.D. TO NEAREST FUNNEL DRAIN W/ AIR GAP. COORDINATE W/ PLUMBING DRAWINGS.
 2. PROVIDE 1.5" INSULATION FOR OAI DUCT.
 3. OUTDOOR AIR INTAKE, EXHAUST OPENINGS, STAIRWAY AND SHAFT VENTS SHALL BE PROVIDED WITH CLASS I MOTORIZED DAMPERS. THE DAMPERS SHALL HAVE AN AIR LEAKAGE RATE NOT GREATER THAN 4 CFM/F² OF DAMPER SURFACE AREA AT 1.0 INCH WATER GAUGE (249 PA) AND SHALL BE LABELED BY AN APPROVED AGENCY WHEN TESTED IN ACCORDANCE WITH AMCA 500D.
 4. CO-ORDINATE LOCATION OF FIRE SMOKE DAMPER WITH FIRE ALARM DRAWING. FIRE ALARM CONTRACTOR SHALL PROVIDE ALL THE DUCT SMOKE DETECTOR REQUIRED FOR PROPER OPERATION OF FIRE SMOKE DAMPER. DUCT SMOKE DETECTOR SHALL BE LOCATED WITHIN 5 FEET FROM THE FIRE SMOKE DAMPER.

10" ROUND DUCT UP & DN TERMINATE 10' FROM OPERABLE OPENINGS INTO BUILDING WITH RAIN CAP

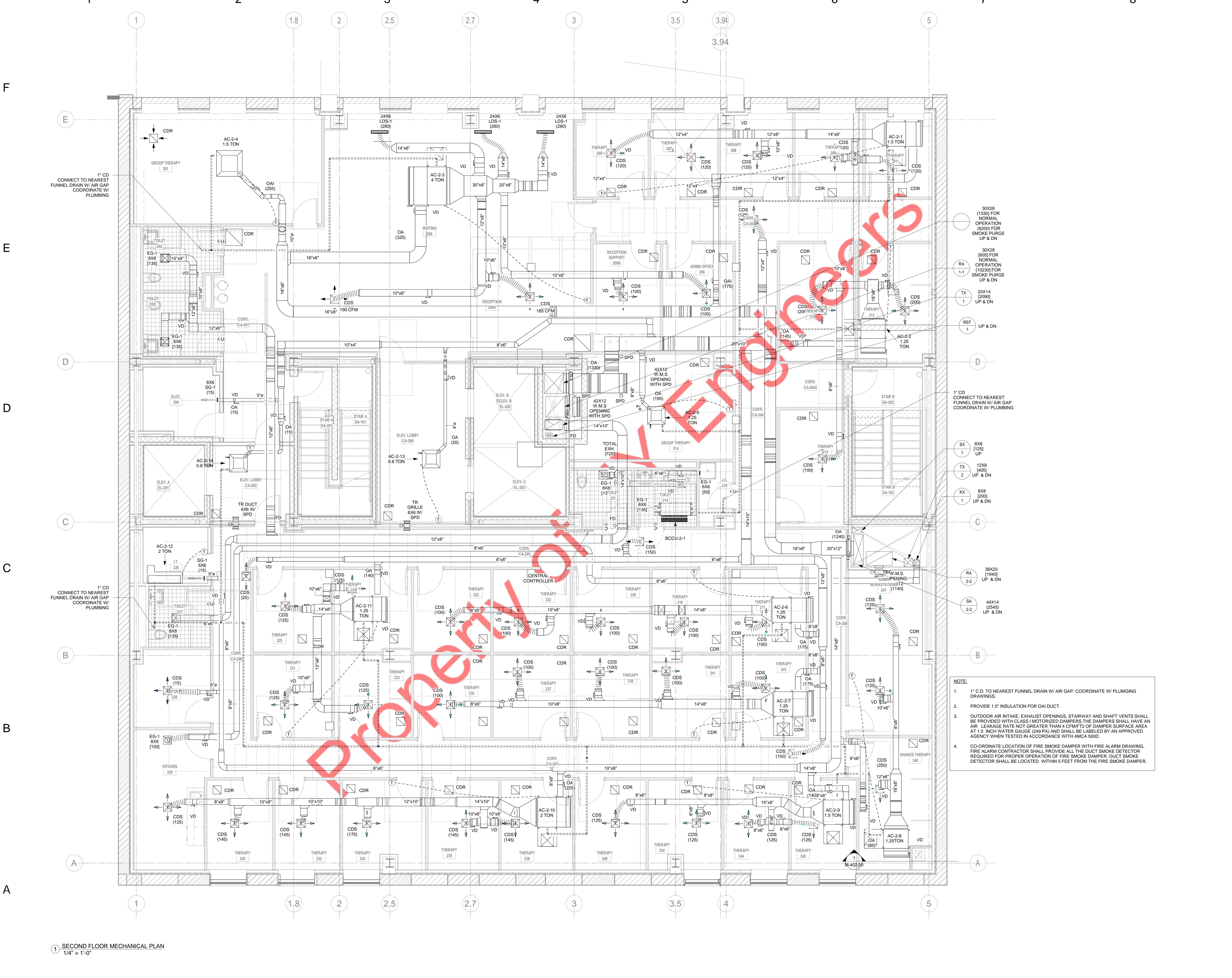
PROVIDE FIRE RATED SHAFT

1" CD CONNECT TO NEAREST FUNNEL DRAIN W/ AIR GAP COORDINATE W/ PLUMBING

1" CD CONNECT TO NEAREST FUNNEL DRAIN W/ AIR GAP COORDINATE W/ PLUMBING

1" CD CONNECT TO NEAREST FUNNEL DRAIN W/ AIR GAP COORDINATE W/ PLUMBING

1 FIRST FLOOR MECHANICAL PLAN
1/4" = 1'-0"



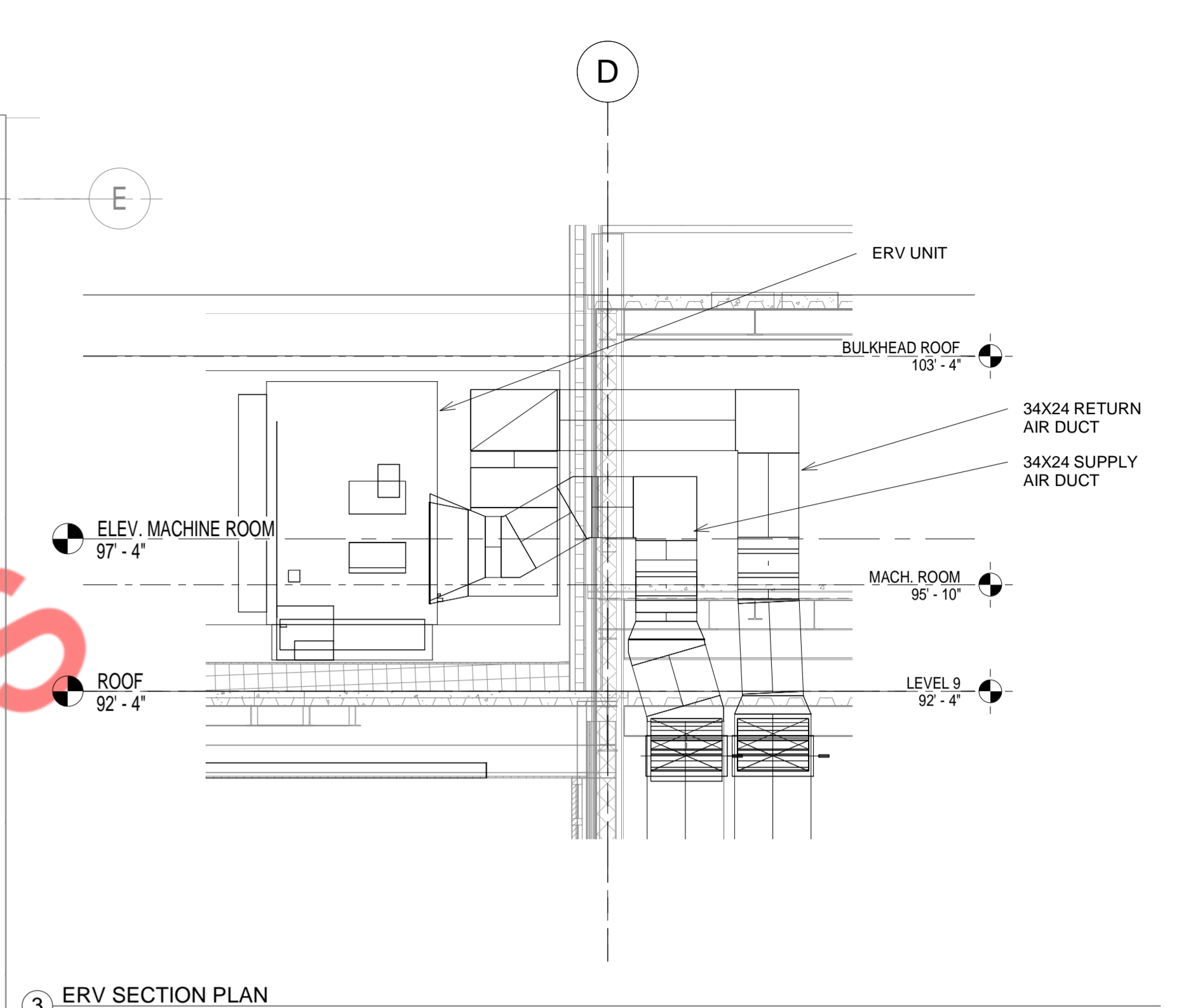
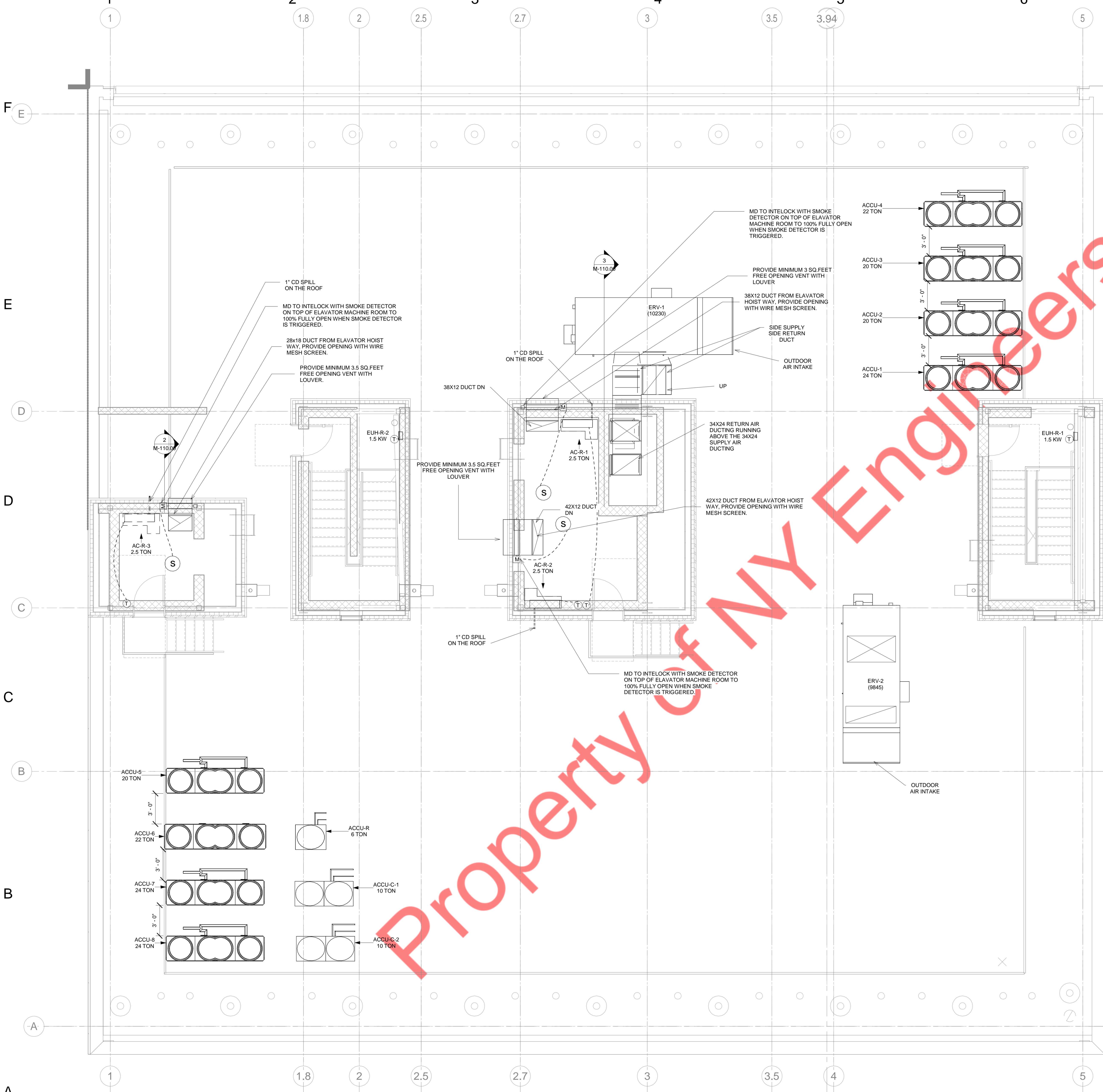
1" CD CONNECT TO NEAREST FUNNEL DRAIN W/ AIR GAP COORDINATE W/ PLUMBING

1" CD CONNECT TO NEAREST FUNNEL DRAIN W/ AIR GAP COORDINATE W/ PLUMBING

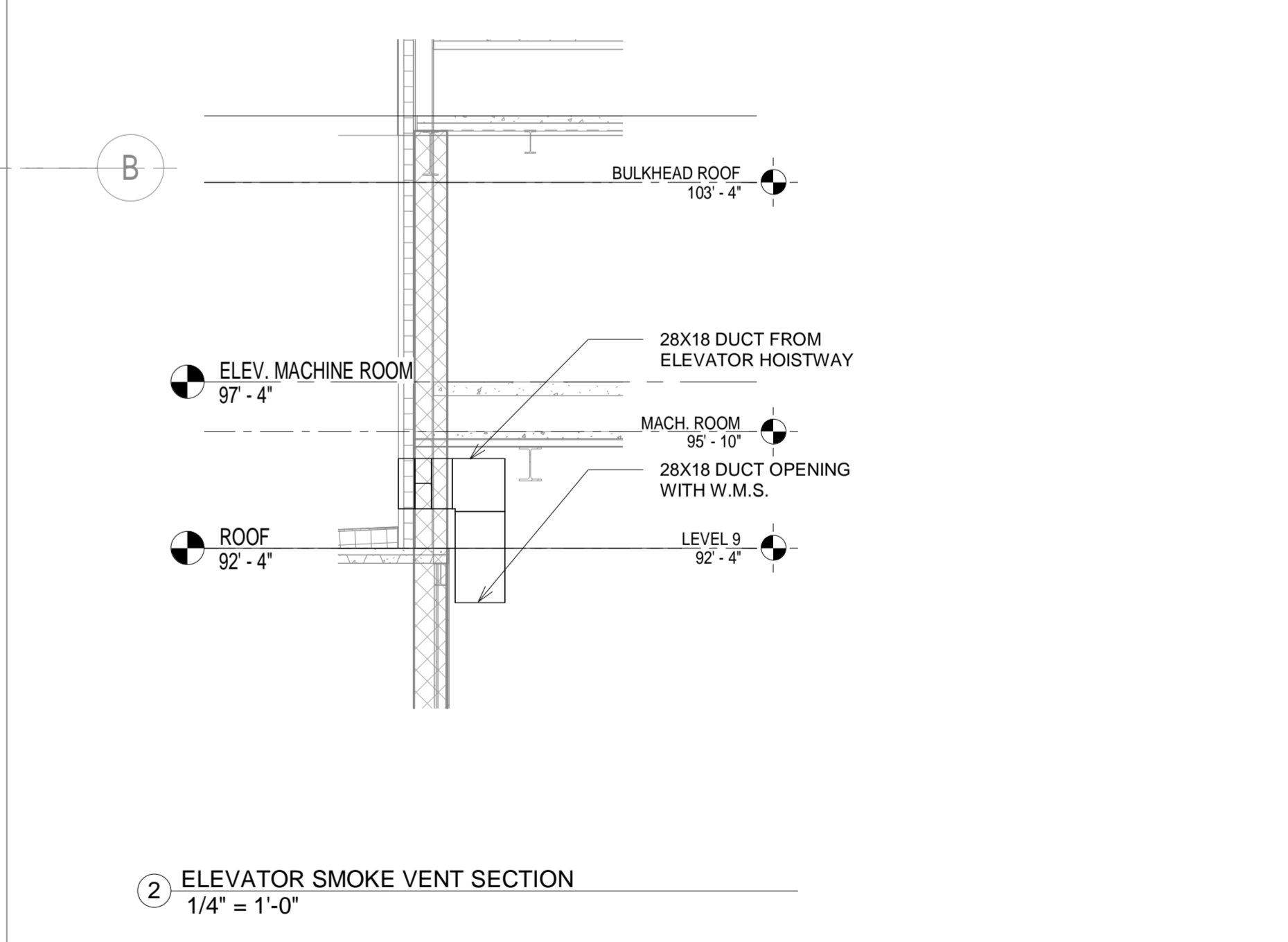
- 30X28 (1330) FOR NORMAL OPERATION (8200) FOR SMOKE PURGE UP & DN
- 30X28 (605) FOR NORMAL OPERATION (10230) FOR SMOKE PURGE UP & DN
- RA 1-1
- TX 1
- REF 1 UP & DN
- 1" CD CONNECT TO NEAREST FUNNEL DRAIN W/ AIR GAP COORDINATE W/ PLUMBING
- SX 1
- TX 2
- KX 1
- RA 2-2
- SA 2-2

NOTE:

1. 1" C.D. TO NEAREST FUNNEL DRAIN W/ AIR GAP. COORDINATE W/ PLUMBING DRAWINGS.
2. PROVIDE 1.5" INSULATION FOR OAI DUCT.
3. OUTDOOR AIR INTAKE, EXHAUST OPENINGS, STAIRWAY AND SHAFT VENTS SHALL BE PROVIDED WITH CLASS I MOTORIZED DAMPERS. THE DAMPERS SHALL HAVE AN AIR LEAKAGE RATE NOT GREATER THAN 4 CFM/FT² OF DAMPER SURFACE AREA AT 1.0 INCH WATER GAUGE (249 PA) AND SHALL BE LABELED BY AN APPROVED AGENCY WHEN TESTED IN ACCORDANCE WITH AMCA 500D.
4. CO-ORDINATE LOCATION OF FIRE SMOKE DAMPER WITH FIRE ALARM DRAWING. FIRE ALARM CONTRACTOR SHALL PROVIDE ALL THE DUCT SMOKE DETECTOR REQUIRED FOR PROPER OPERATION OF FIRE SMOKE DAMPER. DUCT SMOKE DETECTOR SHALL BE LOCATED WITHIN 5 FEET FROM THE FIRE SMOKE DAMPER.



- NOTE:**
1. PROVIDE 1.5" INSULATION FOR OAI DUCT.
 2. OUTDOOR AIR INTAKE, EXHAUST OPENINGS, STAIRWAY AND SHAFT VENTS SHALL BE PROVIDED WITH CLASS I MOTORIZED DAMPERS. THE DAMPERS SHALL HAVE AN AIR LEAKAGE RATE NOT GREATER THAN 4 CFM/FT² OF DAMPER SURFACE AREA AT 1.0 INCH WATER GAUGE (249 PA) AND SHALL BE LABELED BY AN APPROVED AGENCY WHEN TESTED IN ACCORDANCE WITH AMCA 500D.
 3. CO-ORDINATE LOCATION OF FIRE SMOKE DAMPER WITH FIRE ALARM DRAWING. FIRE ALARM CONTRACTOR SHALL PROVIDE ALL THE DUCT SMOKE DETECTOR REQUIRED FOR PROPER OPERATION OF FIRE SMOKE DAMPER. DUCT SMOKE DETECTOR SHALL BE LOCATED WITHIN 5 FEET FROM THE FIRE SMOKE DAMPER.
 4. PROVIDE WEATHER PROOF COATING FOR ALL EXTERIOR DUCTWORK AND PIPING.



1 MECHANICAL ROOF PLAN
1/4" = 1'-0"

2 ELEVATOR SMOKE VENT SECTION
1/4" = 1'-0"

3 ERV SECTION PLAN
1/4" = 1'-0"