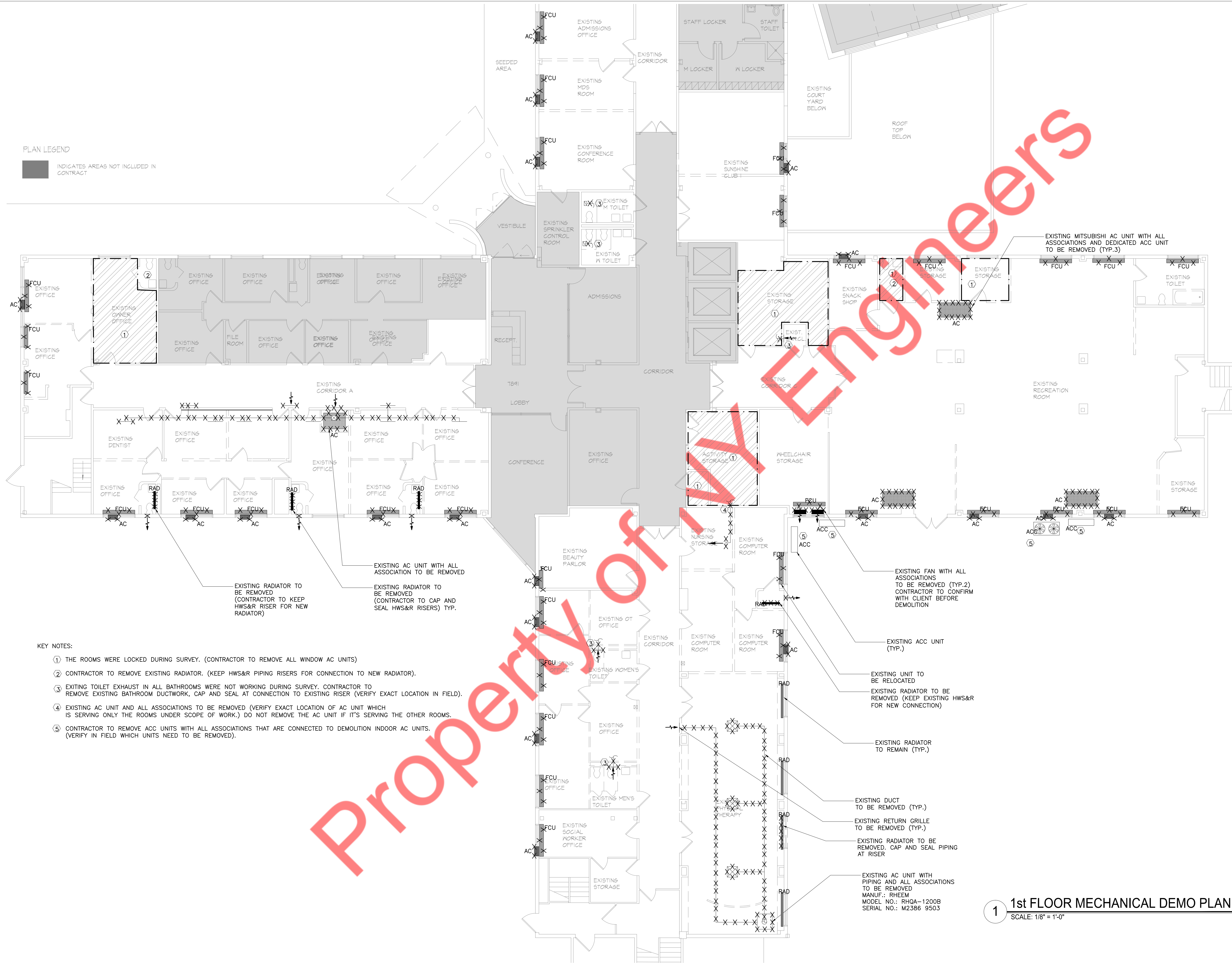


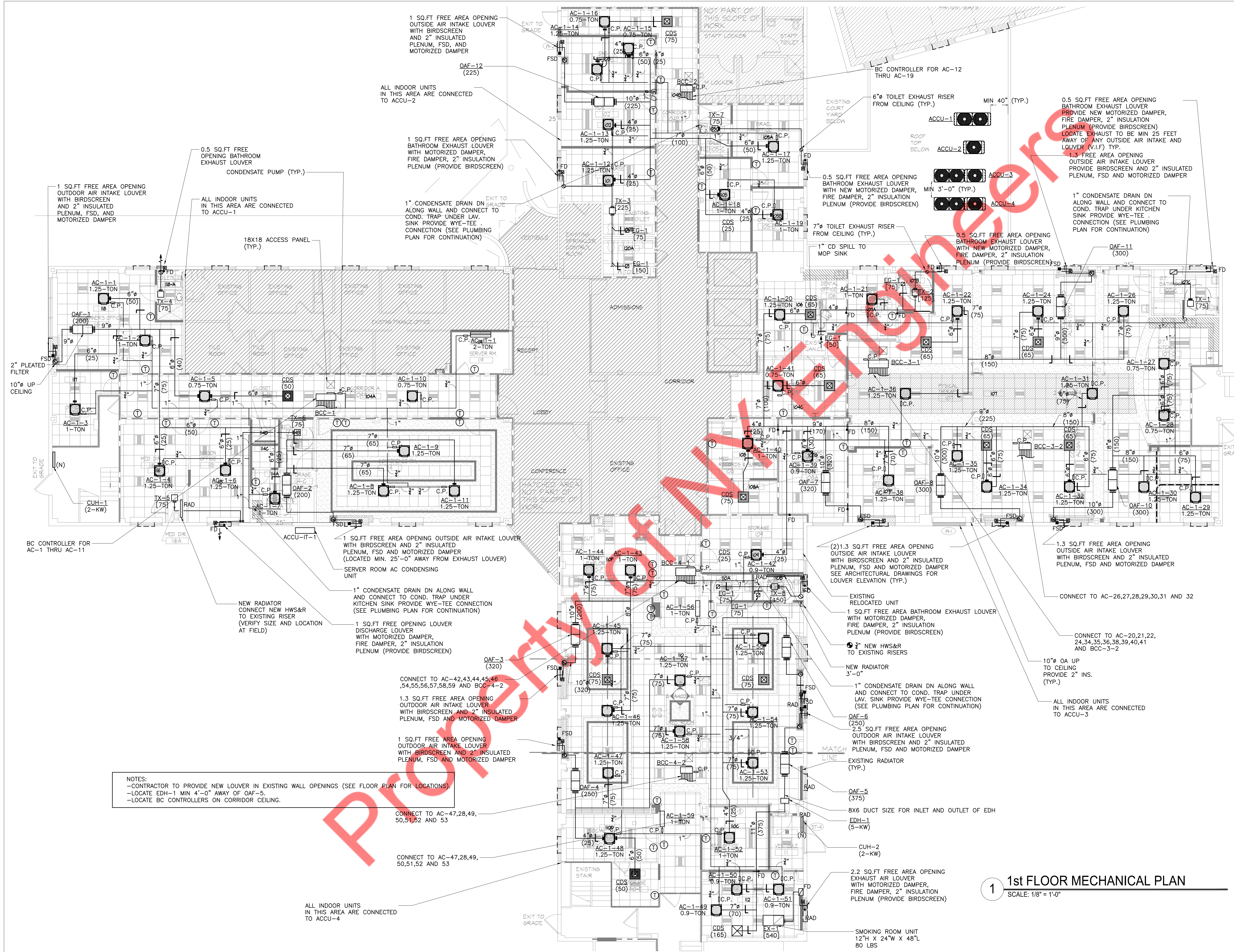
PLAN LEGEND
 ■ INDICATES AREAS NOT INCLUDED IN CONTRACT



KEY NOTES:

- ① THE ROOMS WERE LOCKED DURING SURVEY. (CONTRACTOR TO REMOVE ALL WINDOW AC UNITS)
- ② CONTRACTOR TO REMOVE EXISTING RADIATOR. (KEEP HWS&R PIPING RISERS FOR CONNECTION TO NEW RADIATOR).
- ③ EXITING TOILET EXHAUST IN ALL BATHROOMS WERE NOT WORKING DURING SURVEY. CONTRACTOR TO REMOVE EXISTING BATHROOM DUCTWORK, CAP AND SEAL AT CONNECTION TO EXISTING RISER (VERIFY EXACT LOCATION IN FIELD).
- ④ EXISTING AC UNIT AND ALL ASSOCIATIONS TO BE REMOVED (VERIFY EXACT LOCATION OF AC UNIT WHICH IS SERVING ONLY THE ROOMS UNDER SCOPE OF WORK.) DO NOT REMOVE THE AC UNIT IF IT'S SERVING THE OTHER ROOMS.
- ⑤ CONTRACTOR TO REMOVE ACC UNITS WITH ALL ASSOCIATIONS THAT ARE CONNECTED TO DEMOLITION INDOOR AC UNITS. (VERIFY IN FIELD WHICH UNITS NEED TO BE REMOVED).

1 1st FLOOR MECHANICAL DEMO PLAN
 SCALE: 1/8" = 1'-0"



NOTES:
 -CONTRACTOR TO PROVIDE NEW LOUVER IN EXISTING WALL OPENINGS (SEE FLOOR PLAN FOR LOCATIONS).
 -LOCATE EDH-1 MIN 4'-0" AWAY OF OAF-5.
 -LOCATE BC CONTROLLERS ON CORRIDOR CEILING.

1 1st FLOOR MECHANICAL PLAN
 SCALE: 1/8" = 1'-0"

1 SQ.FT FREE AREA OPENING OUTSIDE AIR INTAKE LOUVER WITH BIRDSCREEN AND 2" INSULATED PLENUM, FSD, AND MOTORIZED DAMPER

CONDENSATE PUMP (TYP.)

ALL INDOOR UNITS IN THIS AREA ARE CONNECTED TO ACCU-1

18X18 ACCESS PANEL (TYP.)

1 SQ.FT FREE AREA OPENING BATHROOM EXHAUST LOUVER WITH MOTORIZED DAMPER, FIRE DAMPER, 2" INSULATION PLENUM (PROVIDE BIRDSCREEN)

1" CONDENSATE DRAIN DN ALONG WALL AND CONNECT TO COND. TRAP UNDER LAV. SINK PROVIDE WYE-TEE CONNECTION (SEE PLUMBING PLAN FOR CONTINUATION)

1 SQ.FT FREE AREA OPENING OUTSIDE AIR INTAKE LOUVER WITH BIRDSCREEN AND 2" INSULATED PLENUM, FSD AND MOTORIZED DAMPER (LOCATED MIN. 25'-0" AWAY FROM EXHAUST LOUVER)

SERVER ROOM AC CONDENSING UNIT

1" CONDENSATE DRAIN DN ALONG WALL AND CONNECT TO COND. TRAP UNDER KITCHEN SINK PROVIDE WYE-TEE CONNECTION (SEE PLUMBING PLAN FOR CONTINUATION)

1 SQ.FT FREE OPENING LOUVER DISCHARGE LOUVER WITH MOTORIZED DAMPER, FIRE DAMPER, 2" INSULATION PLENUM (PROVIDE BIRDSCREEN)

NEW RADIATOR CONNECT NEW HWS&R TO EXISTING RISER (VERIFY SIZE AND LOCATION AT FIELD)

CONNECT TO AC-42,43,44,45,46,54,55,56,57,58,59 AND BCC-4-2

1.3 SQ.FT FREE AREA OPENING OUTSIDE AIR INTAKE LOUVER WITH BIRDSCREEN AND 2" INSULATED PLENUM, FSD AND MOTORIZED DAMPER

1 SQ.FT FREE AREA OPENING OUTSIDE AIR INTAKE LOUVER WITH BIRDSCREEN AND 2" INSULATED PLENUM, FSD AND MOTORIZED DAMPER

CONNECT TO AC-47,28,49,50,51,52 AND 53

CONNECT TO AC-47,28,49,50,51,52 AND 53

ALL INDOOR UNITS IN THIS AREA ARE CONNECTED TO ACCU-4

1 SQ.FT FREE AREA OPENING OUTSIDE AIR INTAKE LOUVER WITH BIRDSCREEN AND 2" INSULATED PLENUM, FSD, AND MOTORIZED DAMPER

ALL INDOOR UNITS IN THIS AREA ARE CONNECTED TO ACCU-2

1 SQ.FT FREE AREA OPENING BATHROOM EXHAUST LOUVER WITH MOTORIZED DAMPER, FIRE DAMPER, 2" INSULATION PLENUM (PROVIDE BIRDSCREEN)

1" CONDENSATE DRAIN DN ALONG WALL AND CONNECT TO COND. TRAP UNDER LAV. SINK PROVIDE WYE-TEE CONNECTION (SEE PLUMBING PLAN FOR CONTINUATION)

1 SQ.FT FREE AREA OPENING BATHROOM EXHAUST LOUVER WITH NEW MOTORIZED DAMPER, FIRE DAMPER, 2" INSULATION PLENUM (PROVIDE BIRDSCREEN)

7" TOILET EXHAUST RISER FROM CEILING (TYP.)

1" CD SPILL TO MOP SINK

0.5 SQ.FT FREE AREA OPENING BATHROOM EXHAUST LOUVER WITH NEW MOTORIZED DAMPER, FIRE DAMPER, 2" INSULATION PLENUM (PROVIDE BIRDSCREEN)

7" TOILET EXHAUST RISER FROM CEILING (TYP.)

0.5 SQ.FT FREE AREA OPENING BATHROOM EXHAUST LOUVER WITH NEW MOTORIZED DAMPER, FIRE DAMPER, 2" INSULATION PLENUM (PROVIDE BIRDSCREEN)

1" CONDENSATE DRAIN DN ALONG WALL AND CONNECT TO COND. TRAP UNDER KITCHEN SINK PROVIDE WYE-TEE CONNECTION (SEE PLUMBING PLAN FOR CONTINUATION)

0.5 SQ.FT FREE AREA OPENING BATHROOM EXHAUST LOUVER WITH NEW MOTORIZED DAMPER, FIRE DAMPER, 2" INSULATION PLENUM (PROVIDE BIRDSCREEN) LOCATE EXHAUST TO BE MIN 25 FEET AWAY OF ANY OUTSIDE AIR INTAKE AND LOUVER (V.I.F) TYP.

1.3 FREE AREA OPENING OUTSIDE AIR INTAKE LOUVER PROVIDE BIRDSCREEN AND 2" INSULATED PLENUM, FSD AND MOTORIZED DAMPER

1" CONDENSATE DRAIN DN ALONG WALL AND CONNECT TO COND. TRAP UNDER KITCHEN SINK PROVIDE WYE-TEE CONNECTION (SEE PLUMBING PLAN FOR CONTINUATION)

0.5 SQ.FT FREE AREA OPENING BATHROOM EXHAUST LOUVER WITH NEW MOTORIZED DAMPER, FIRE DAMPER, 2" INSULATION PLENUM (PROVIDE BIRDSCREEN)

1.3 SQ.FT FREE AREA OPENING OUTSIDE AIR INTAKE LOUVER WITH BIRDSCREEN AND 2" INSULATED PLENUM, FSD AND MOTORIZED DAMPER

CONNECT TO AC-26,27,28,29,30,31 AND 32

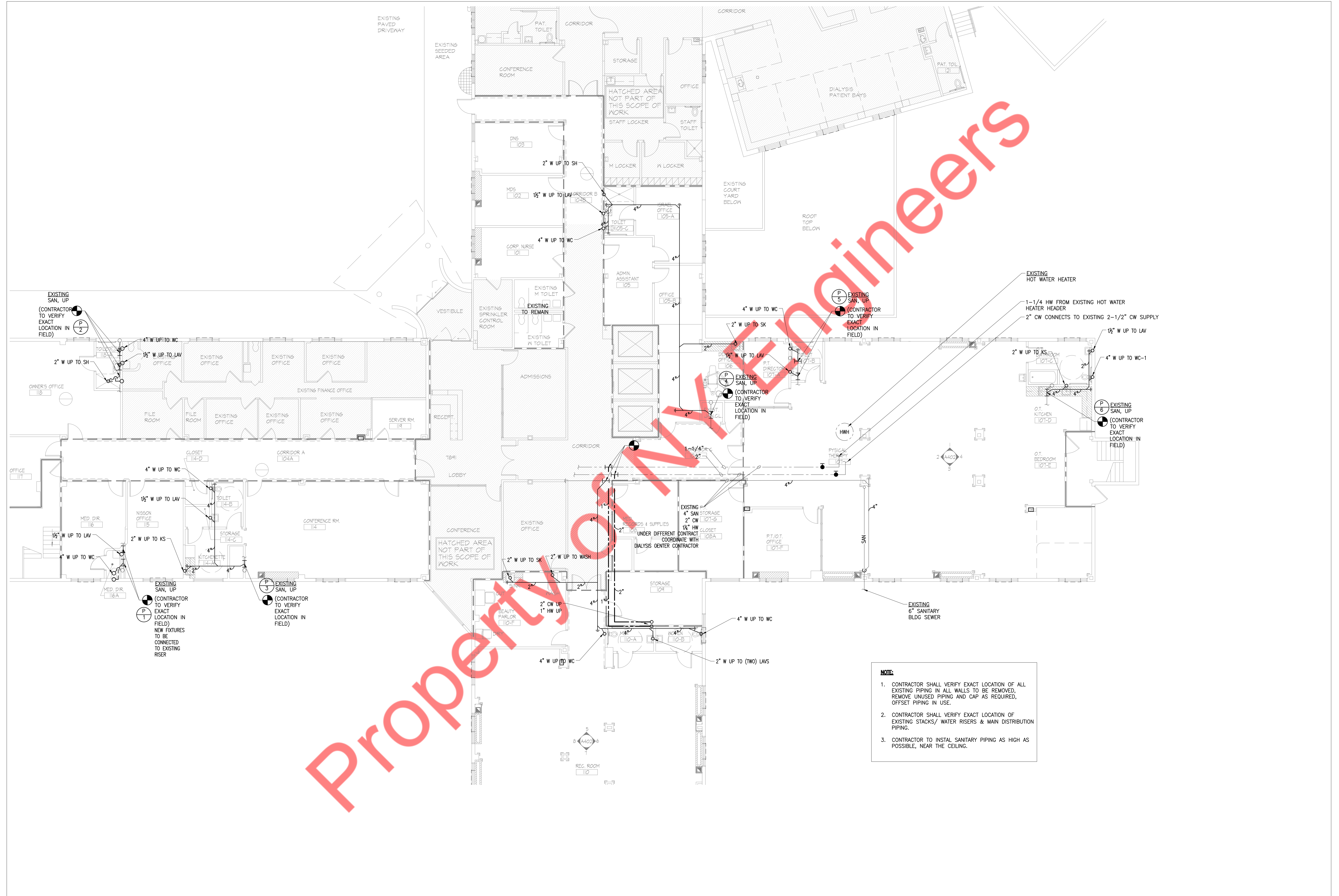
CONNECT TO AC-20,21,22,24,34,35,36,38,39,40,41 AND BCC-3-2

10" OA UP TO CEILING PROVIDE 2" INS. (TYP.)

ALL INDOOR UNITS IN THIS AREA ARE CONNECTED TO ACCU-3

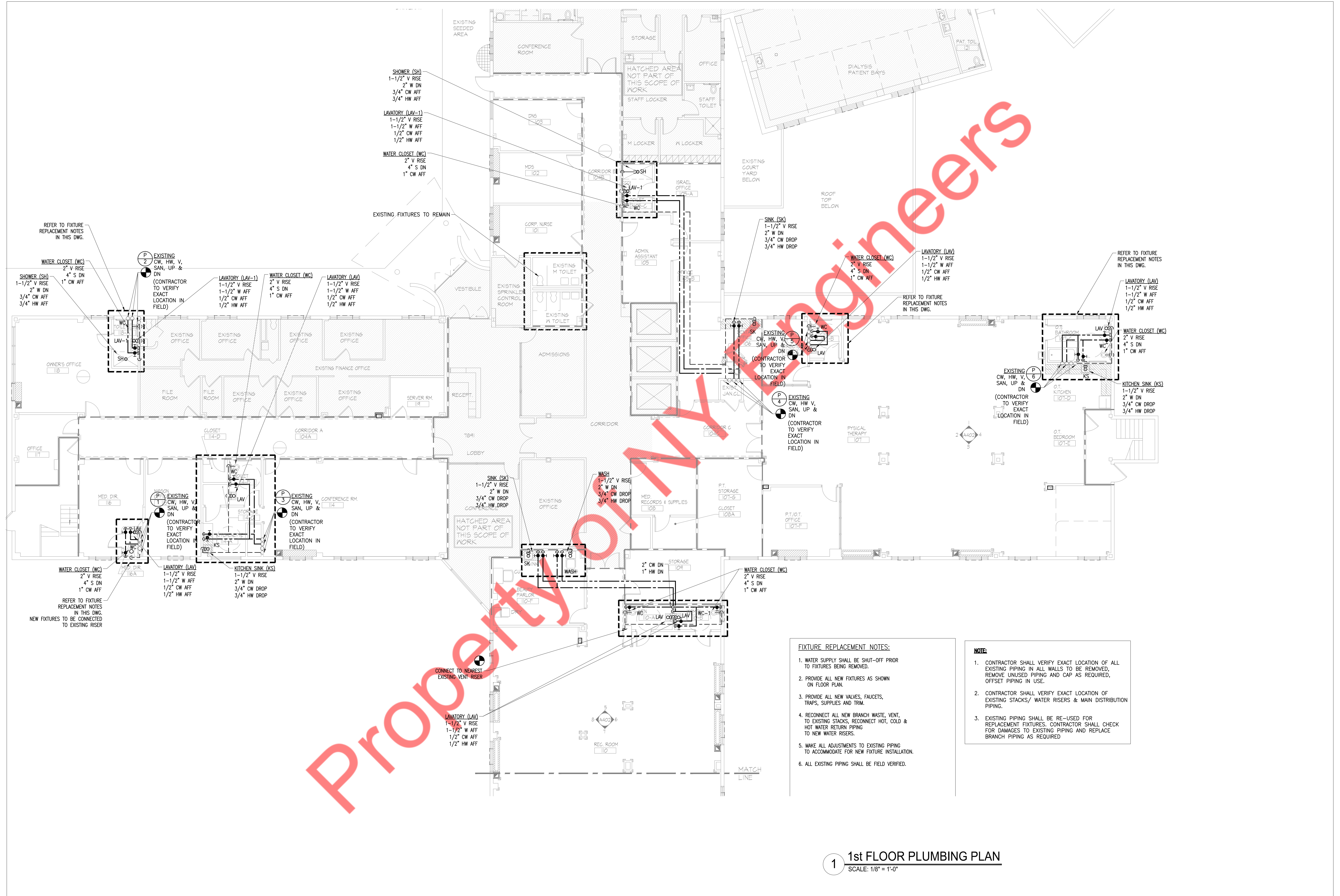
2.2 SQ.FT FREE AREA OPENING EXHAUST AIR LOUVER WITH MOTORIZED DAMPER, FIRE DAMPER, 2" INSULATION PLENUM (PROVIDE BIRDSCREEN)

SMOKING ROOM UNIT 12'H X 24'W X 48'L 80 LBS



NOTE:

1. CONTRACTOR SHALL VERIFY EXACT LOCATION OF ALL EXISTING PIPING IN ALL WALLS TO BE REMOVED, REMOVE UNUSED PIPING AND CAP AS REQUIRED, OFFSET PIPING IN USE.
2. CONTRACTOR SHALL VERIFY EXACT LOCATION OF EXISTING STACKS/ WATER RISERS & MAIN DISTRIBUTION PIPING.
3. CONTRACTOR TO INSTAL SANITARY PIPING AS HIGH AS POSSIBLE, NEAR THE CEILING.



SHOWER (SH)
 1-1/2" V RISE
 2" W DN
 3/4" CW AFF
 3/4" HW AFF

LAVATORY (LAV-1)
 1-1/2" V RISE
 1-1/2" W AFF
 1/2" CW AFF
 1/2" HW AFF

WATER CLOSET (WC)
 2" V RISE
 4" S DN
 1" CW AFF

REFER TO FIXTURE REPLACEMENT NOTES IN THIS DWG.

EXISTING
 CW, HW, V, SAN, UP & DN
 (CONTRACTOR TO VERIFY EXACT LOCATION IN FIELD)

LAVATORY (LAV-1)
 1-1/2" V RISE
 1-1/2" W AFF
 1/2" CW AFF
 1/2" HW AFF

WATER CLOSET (WC)
 2" V RISE
 4" S DN
 1" CW AFF

LAVATORY (LAV)
 1-1/2" V RISE
 1-1/2" W AFF
 1/2" CW AFF
 1/2" HW AFF

SINK (SK)
 1-1/2" V RISE
 2" W DN
 3/4" CW DROP
 3/4" HW DROP

WATER CLOSET (WC)
 2" V RISE
 4" S DN
 1" CW AFF

LAVATORY (LAV)
 1-1/2" V RISE
 1-1/2" W AFF
 1/2" CW AFF
 1/2" HW AFF

REFER TO FIXTURE REPLACEMENT NOTES IN THIS DWG.

LAVATORY (LAV)
 1-1/2" V RISE
 1-1/2" W AFF
 1/2" CW AFF
 1/2" HW AFF

WATER CLOSET (WC)
 2" V RISE
 4" S DN
 1" CW AFF

KITCHEN SINK (KS)
 1-1/2" V RISE
 2" W DN
 3/4" CW DROP
 3/4" HW DROP

EXISTING
 CW, HW, V, SAN, UP & DN
 (CONTRACTOR TO VERIFY EXACT LOCATION IN FIELD)

EXISTING
 CW, HW, V, SAN, UP & DN
 (CONTRACTOR TO VERIFY EXACT LOCATION IN FIELD)

SINK (SK)
 1-1/2" V RISE
 2" W DN
 3/4" CW DROP
 3/4" HW DROP

WASH
 1-1/2" V RISE
 2" W DN
 3/4" CW DROP
 3/4" HW DROP

WATER CLOSET (WC)
 2" V RISE
 4" S DN
 1" CW AFF

WATER CLOSET (WC)
 2" V RISE
 4" S DN
 1" CW AFF

LAVATORY (LAV)
 1-1/2" V RISE
 1-1/2" W AFF
 1/2" CW AFF
 1/2" HW AFF

KITCHEN SINK (KS)
 1-1/2" V RISE
 2" W DN
 3/4" CW DROP
 3/4" HW DROP

REFER TO FIXTURE REPLACEMENT NOTES IN THIS DWG. NEW FIXTURES TO BE CONNECTED TO EXISTING RISER

CONNECT TO NEAREST EXISTING VENT RISER

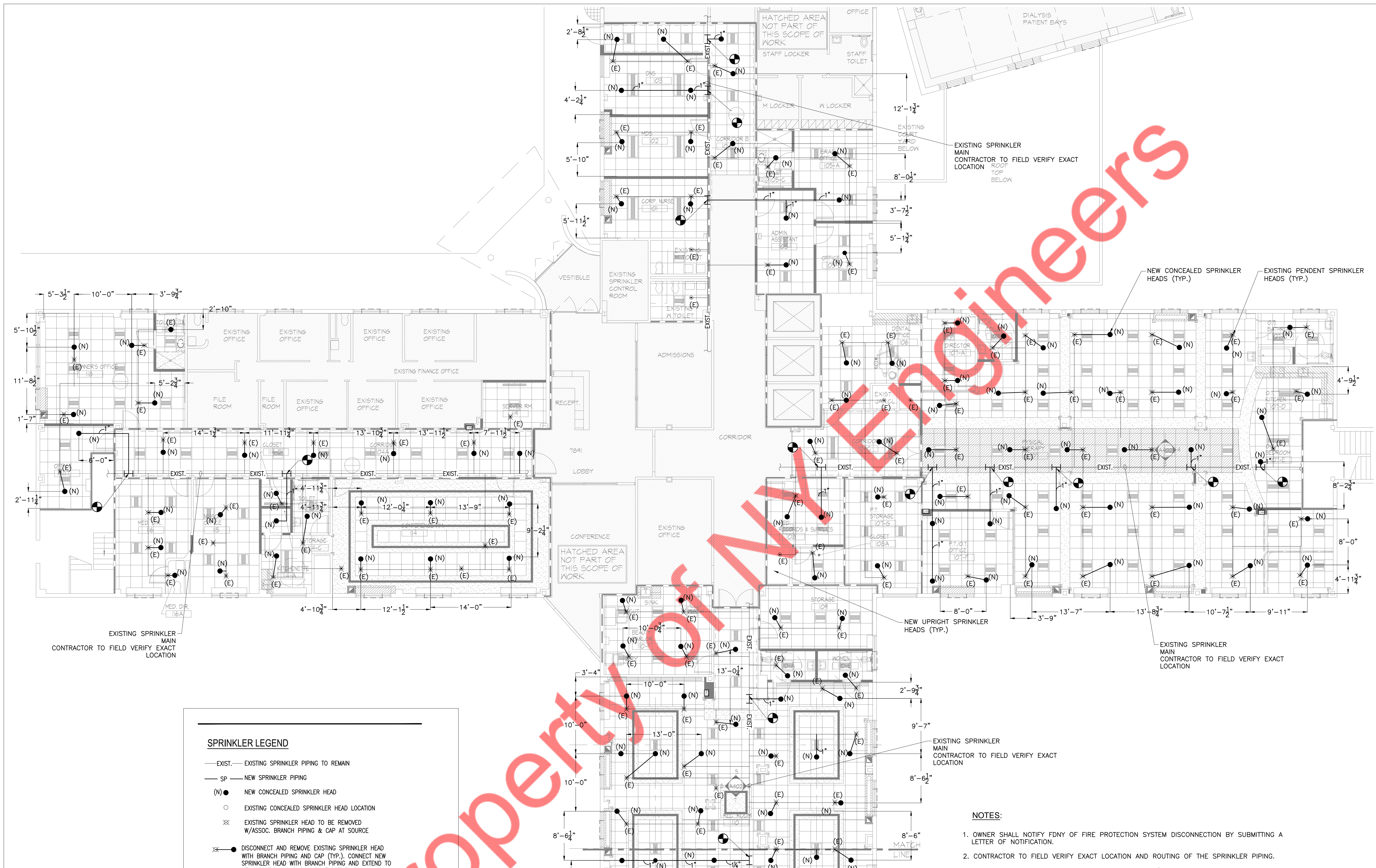
LAVATORY (LAV)
 1-1/2" V RISE
 1-1/2" W AFF
 1/2" CW AFF
 1/2" HW AFF

FIXTURE REPLACEMENT NOTES:

1. WATER SUPPLY SHALL BE SHUT-OFF PRIOR TO FIXTURES BEING REMOVED.
2. PROVIDE ALL NEW FIXTURES AS SHOWN ON FLOOR PLAN.
3. PROVIDE ALL NEW VALVES, FAUCETS, TRAPS, SUPPLIES AND TRIM.
4. RECONNECT ALL NEW BRANCH WASTE, VENT, TO EXISTING STACKS, RECONNECT HOT, COLD & HOT WATER RETURN PIPING TO NEW WATER RISERS.
5. MAKE ALL ADJUSTMENTS TO EXISTING PIPING TO ACCOMMODATE FOR NEW FIXTURE INSTALLATION.
6. ALL EXISTING PIPING SHALL BE FIELD VERIFIED.

NOTE:

1. CONTRACTOR SHALL VERIFY EXACT LOCATION OF ALL EXISTING PIPING IN ALL WALLS TO BE REMOVED, REMOVE UNUSED PIPING AND CAP AS REQUIRED, OFFSET PIPING IN USE.
2. CONTRACTOR SHALL VERIFY EXACT LOCATION OF EXISTING STACKS/ WATER RISERS & MAIN DISTRIBUTION PIPING.
3. EXISTING PIPING SHALL BE RE-USED FOR REPLACEMENT FIXTURES. CONTRACTOR SHALL CHECK FOR DAMAGES TO EXISTING PIPING AND REPLACE BRANCH PIPING AS REQUIRED



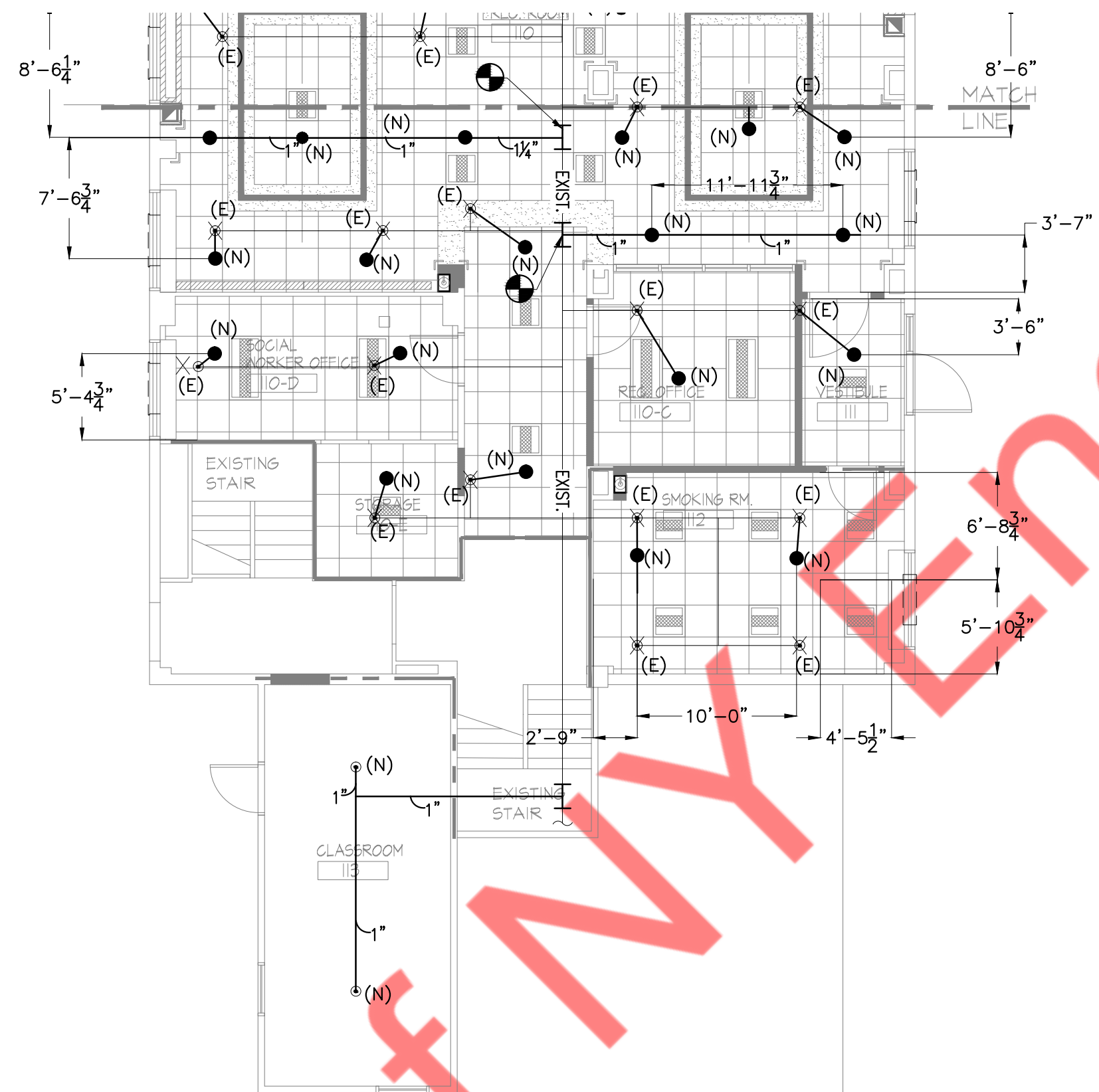
SPRINKLER LEGEND

- EXIST. — EXISTING SPRINKLER PIPING TO REMAIN
- SP — NEW SPRINKLER PIPING
- (N) ● NEW CONCEALED SPRINKLER HEAD
- EXISTING CONCEALED SPRINKLER HEAD LOCATION
- ⊗ EXISTING SPRINKLER HEAD TO BE REMOVED W/ASSOC. BRANCH PIPING & CAP AT SOURCE
- ⊗ ● DISCONNECT AND REMOVE EXISTING SPRINKLER HEAD WITH BRANCH PIPING AND CAP (TYP.). CONNECT NEW SPRINKLER HEAD WITH BRANCH PIPING AND EXTEND TO NEW LOCATION AS SHOWN ON FLOOR PLAN
- SPRINKLER CAPPED OUTLET
- SPRINKLER PIPING POINT OF CONNECTION
- SPRINKLER PIPING POINT OF DISCONNECTION
- ⊕ PIPE THRU RATED WALL

NOTE:
 1. PROVIDE NEW HEADS IF PLUGGED AT EXISTING SPRINKLER HEAD LOCATIONS.
 2. REPLACE EXISTING DEFECTIVE HEADS WITH NEW SPRINKLER HEADS.

NOTES:

1. OWNER SHALL NOTIFY FDNY OF FIRE PROTECTION SYSTEM DISCONNECTION BY SUBMITTING A LETTER OF NOTIFICATION.
2. CONTRACTOR TO FIELD VERIFY EXACT LOCATION AND ROUTING OF THE SPRINKLER PIPING.
3. I, MICHAEL TOBIAS, HEREBY CERTIFY THAT THE SYSTEM'S NEWLY CALCULATED HYDRAULIC DEMAND DUE TO WORK FILED UNDER THIS APPLICATION IS EQUAL TO OR LESS THAN THE HYDRAULIC DEMAND OF THE EXISTING SYSTEM PRIOR TO CURRENT OR PROPOSED MODIFICATION.



SPRINKLER LEGEND

- EXIST. — EXISTING SPRINKLER PIPING TO REMAIN
- SP — NEW SPRINKLER PIPING
- (N) ● NEW CONCEALED SPRINKLER HEAD
- EXISTING CONCEALED SPRINKLER HEAD LOCATION
- ⊗ EXISTING SPRINKLER HEAD TO BE REMOVED W/ASSOC. BRANCH PIPING & CAP AT SOURCE
- ⊗ ● DISCONNECT AND REMOVE EXISTING SPRINKLER HEAD WITH BRANCH PIPING AND CAP (TYP.). CONNECT NEW SPRINKLER HEAD WITH BRANCH PIPING AND EXTEND TO NEW LOCATION AS SHOWN ON FLOOR PLAN
- ⊔ SPRINKLER CAPPED OUTLET
- SPRINKLER PIPING POINT OF CONNECTION
- SPRINKLER PIPING POINT OF DISCONNECTION
- ⊕ PIPE THRU RATED WALL

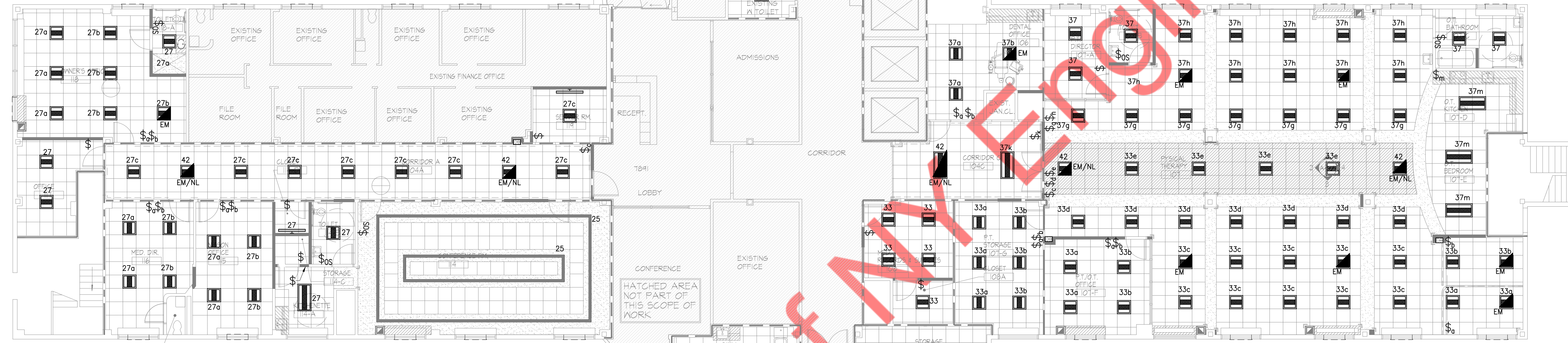
NOTE:

1. PROVIDE NEW HEADS IF PLUGGED AT EXISTING SPRINKLER HEAD LOCATIONS.
2. REPLACE EXISTING DEFECTIVE HEADS WITH NEW SPRINKLER HEADS.

NOTES:

1. OWNER SHALL NOTIFY FIRE DEPARTMENT OF FIRE PROTECTION SYSTEM DISCONNECTION BY SUBMITTING A LETTER OF NOTIFICATION.
2. CONTRACTOR TO FIELD VERIFY EXACT LOCATION AND ROUTING OF THE SPRINKLER PIPING.
3. I, MICHAEL TOBIAS, HEREBY CERTIFY THAT THE SYSTEM'S NEWLY CALCULATED HYDRAULIC DEMAND DUE TO WORK FILED UNDER THIS APPLICATION IS EQUAL TO OR LESS THAN THE HYDRAULIC DEMAND OF THE EXISTING SYSTEM PRIOR TO CURRENT OR PROPOSED MODIFICATION.

LIGHTING LEGEND	
	2x2 RECESSED LED LIGHT FIXTURE HPR-LED SERIES BY FINELITE HPR-A-2X2-50-LED 50-3000K-120V-5C
	2x4 RECESSED LED LIGHT FIXTURE HPR-LED SERIES BY FINELITE HPR-A-2X4-50-LED 50-3000K-120V-5C
	RECESSED LED LIGHT BY FINELITE HP4-R-4-50-3500K-120V-5C
	6" SQUARE LED DOWNLIGHT BY GOTHAM EVO-30-30-6AR-LD-120V
	6" LED DOWNLIGHT BY GOTHAM EVO-30-18-6AR-MD-LD-VOLTAGE
	EXIT DIRECTION WITH DIRECTION RECESSED CLG MOUNT - EDGR BY LITHONIA (OR EQ.) V.I.F. EXACT LOCATION TO AVOID OPEN WEB JOIST WALL MOUNT WHERE POSSIBLE



LIGHTING DRAWING NOTES:

- REFER TO NEC TABLE 310.15(B)(16) FOR AMPACITIES OF CONDUCTORS: 75°C TERMINALS, 40°C AMBIENT TEMPERATURE.
- ALL WIRING SHALL BE PROPERLY IDENTIFIED PER NEC 310.12 AND AS REQUIRED.
- WHERE MORE THAN THREE CURRENT CARRYING CONDUCTORS PER RACEWAY IS USED, NEC TABLE 10.15(B)(2)(A) DERATING FACTORS SHALL BE APPLIED. IN ADDITION, CONDUIT FILL SHALL COMPLY WITH NEC 344.22 AND 352.22 RESPECTIVELY.
- REFER TO ARCHITECTURAL PLANS FOR FINAL LOCATIONS OF ALL LUMINAIRES AND SWITCHES, AND FOR ALL FINISHED CEILING HEIGHTS.
- REFER TO ARCHITECTURAL PLANS FOR FINAL LOCATIONS OF ALL LIGHTING FIXTURE AND CONTROL DEVICES, AND FOR FINAL CEILING AND WALL HEIGHTS AND LAYOUTS.
- REFER TO ARCHITECTURAL PLANS FOR FINAL LUMINAIRE AND LAMPING SPECIFICATIONS.
- SUBMIT COLOR OPTIONS FOR ALL LIGHTING FIXTURES AND CONTROL DEVICES FOR SELECTION BY ARCHITECT.
- COORDINATE FIXTURE STYLE WITH CEILING SYSTEM THE FIXTURE IS TO BE INSTALLED IN OR ON. LAY-IN FIXTURE FRAME STYLE SHALL MATCH THE CEILING GRID/ SYSTEM. SURFACE MOUNTED FIXTURES SHALL MAINTAIN THE INTENDED CEILING FIRE RATINGS.
- REFER TO ARCHITECTURAL DRAWINGS FOR ROOM NAMES AND NUMBERS.
- FOR CLARITY, SOME FIXTURE & SWITCH INTERCONNECTING WIRING IS NOT EXPLICITLY SHOWN. CONTRACTOR SHALL USE SWITCHING DESIGNATIONS, HOME RUN REFERENCES, AND APPLICABLE DETAILS TO DERIVE THE COMPLETE SCOPE OF LIGHTING WIRING INTENT.
- HOMERUNS ARE SHOWN IN LOCATIONS FOR DRAWING CLARITY. CONTRACTOR MAY CHOOSE TO FEED POWER FROM OTHER LOCATIONS AS LONG AS FUNCTIONAL INTENT IS MAINTAINED, AND FIELD DRAWINGS APPROPRIATELY MARKED.
- NUMBER(S) SHOWN AT LIGHTING FIXTURES AND ASSOCIATED JUNCTION BOXES INDICATES CIRCUIT NUMBERS IN PANELBOARD. PROVIDE WIRE AND CONDUIT TO INTERCONNECT EQUIPMENT AND ASSOCIATED CONTROL DEVICES WITH SAME CIRCUIT NUMBERS AND RUN TO PANELBOARD.
- ALL BRANCH CIRCUITS ASSIGNED TO LIGHTING FIXTURES SHALL BE CIRCUITED TO EXISTING PANELBOARDS "PP-1L", U.O.N. AS INDICATED.
- CIRCUITING FOR LIGHTING FIXTURES IN ROOMS WITH TOGGLE SWITCHES SHALL BE CONTROLLED BY DESIGNATED SWITCHES. IF SPECIFIC DESIGNATION IS NOT INDICATED, ALL LIGHTING FIXTURES IN ROOM/AREA SHALL BE CONTROLLED BY THE SWITCH INDICATED.
- BRANCH CIRCUITS FOR DIMMER CONTROLLED LIGHTING FIXTURES SHALL BE PROVIDED WITH A SEPARATE NEUTRAL CONDUCTOR FOR EACH PHASE CONDUCTOR.
- LIGHTING FIXTURES PROVIDED WITH EMERGENCY BATTERY PACKS AND INDICATED WITH SWITCH CONTROL SHALL BE WIRED WITH BATTERY CHARGING/SENSING CIRCUIT WIRED AHEAD OF SWITCH CONTROL.
- WIRING OF LIGHTING FIXTURES AND EXIT LIGHTS TO EXISTING CIRCUITS SHALL BE LIMITED TO THE FOLLOWING:
a. 1600 WATTS ON A 20A, 120 VOLT CIRCUIT.
- LIGHTING BRANCH CIRCUIT RACEWAY SYSTEM SHALL NOT BE USED FOR RECEPTACLE/POWER CIRCUIT WIRING.
- PROVIDE INSULATED EQUIPMENT GROUNDING CONDUCTORS FOR ALL LIGHTING FIXTURES AS REQUIRED. GROUND CONDUCTORS MAY NOT BE EXPLICITLY SHOWN ON CERTAIN WIRING DESIGNATIONS.
- ALL WIRING TO BE #12AWG WITH #12AWG GND UNLESS OTHERWISE NOTED OR REQUIRED DUE TO CONDUCTOR DERATING FOR MORE THAN THREE CURRENT CARRYING CONDUCTORS PER RACEWAY OR CABLE ASSEMBLY.
- CONDUCTORS OR CABLES INSTALLED IN CONDUIT EXPOSED TO DIRECT SUNLIGHT ON OR ABOVE ROOFTOPS SHALL BE DERATED AND SIZE-ADJUSTED IN ORDER TO COMPLY WITH NEC 310.15(B)(2)(C).
- ALL EXPOSED WIRING SHALL BE IN EMT CONDUIT. CONCEALED WIRING, AND WIRING IN DROP CEILING CAVITIES SHALL BE PERMITTED TO BE MC CABLE WITH LISTED FITTINGS AND GROUNDING ARMOR UNLESS OTHERWISE NOTED.
- CONTRACTOR SHALL PROVIDE ALL ELECTRICAL ROUGH-IN EQUIPMENT AND APPURTENANCES PER NEC (MIN.). CONTRACTOR SHALL SUBMIT COLOR OPTIONS FOR ANY AND ALL WIRING DEVICES AND DEVICE PLATES FOR SELECTION BY ARCHITECT.
- FINAL CONDUIT/CABLE ROUTING SHALL BE DETERMINED IN-FIELD, AND PRIOR TO THE COMMENCEMENT OF WORK, COORDINATED WITH OTHER TRADE CONTRACTORS AND THE TENANT.
- COORDINATE ALL WORK WITH ALL INVOLVED TRADE CONTRACTORS, EQUIPMENT VENDORS, UTILITIES, AND THE OWNER AS REQUIRED. BASE BID ACCORDINGLY.
- ALL EQUIPMENT SHALL BE INSTALLED PER MANUFACTURER'S INSTRUCTIONS.
- FEED NEW EMERGENCY MEANS-OF-EGRESS AND EXIT LIGHTING FIXTURE UNITS FROM NEW/EXISTING PANELBOARD (LP-1/RP-1) AS REQUIRED. POWER SHALL BE UNSWITCHED, AND WITHOUT AUTOMATIC AND/OR MANUAL CONTROLS.

PROVIDE LISTED BREAKER BLOCKING DEVICE AT EXISTING PANELBOARD IN ORDER TO AVOID UNAUTHORIZED BREAKER OPERATION. REFER TO ELECTRICAL DETAILS FOR FURTHER REQUIREMENTS.

28. CONTRACTOR SHALL CONDUCT ALL NECESSARY EMERGENCY LIGHTING TEST(S) FOR THE AUTHORITY HAVING JURISDICTION.

29. ALL WIRING AND EQUIPMENT WITHIN DROP CEILING SPACES, AND/OR WITHIN DUCTS, PLENUMS, AND OTHER AIR-HANDLING SPACES SHALL BE LISTED FOR PLENUM USE, AND SHALL CONFORM WITH NEC 300.22.

30. IN CASES WHERE EXISTING PANELBOARD FACILITIES ARE BEING USED, CONTRACTOR SHALL FIELD VERIFY AVAILABLE PANELBOARD/CIRCUIT SPACE, AND MAKE ANY AND ALL MODIFICATION(S) AS REQUIRED TO ACCOMMODATE NEW BRANCH CIRCUIT REQUIREMENTS AS INTENDED.

31. CONTRACTOR SHALL MEASURE PHASE LOADS (TRUE RMS) OF EXISTING PANELBOARDS UTILIZED TO COMPLETE THE CONTRACT WORK, AND BALANCE NEW LOAD AS REQUIRED.


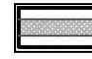
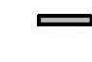



32. REFER TO ELECTRICAL ONE-LINE DIAGRAM, ELECTRICAL PANELBOARD SCHEDULES AND ELECTRICAL DETAILS FOR ADDITIONAL REQUIREMENTS THAT MAY APPLY.

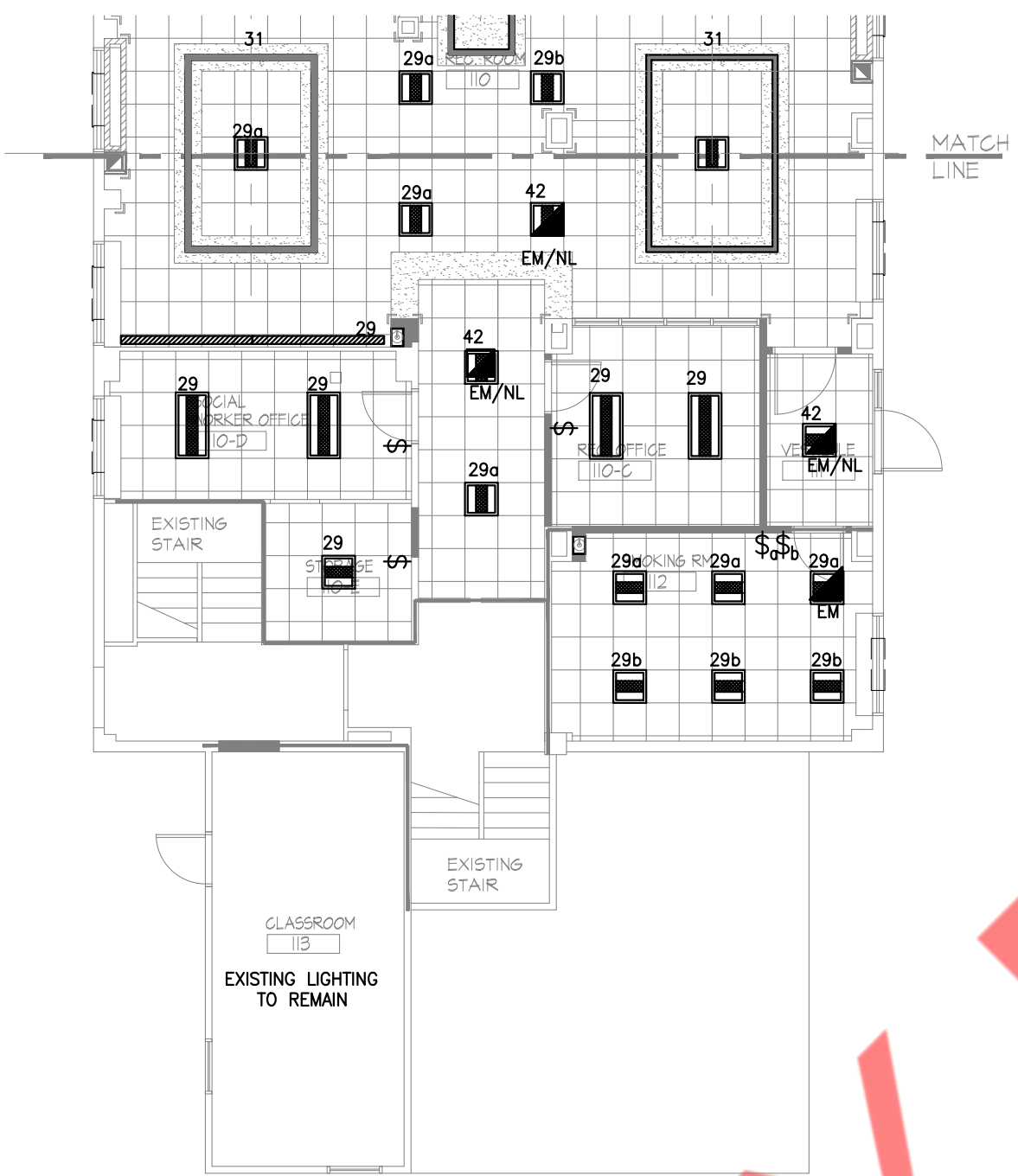
33. REFER TO DWG. E-001.00 FOR ELECTRICAL GENERAL NOTES, SYMBOL LIST & ABBREVIATIONS. DWG. E-002.00 FOR ELECTRICAL NOTES AND DWGS. E-003.00 & E-004 FOR ELECTRICAL SPECIFICATIONS.

WORK NOTES:

- ALL LIGHTING FIXTURES TO BE POWERED BY EXISTING PANEL PP-1L.
- COORDINATE EXACT LOCATION OF EXIT LIGHTS WITH ARCHITECT. POWER EMERGENCY LIGHTING CIRCUITS WITH PANEL PP-1L # 42.
- CIRCUIT DESIGNATION IS FOR DESIGN INTENT PURPOSES. ELECTRICAL CONTRACTOR SHALL TRACE EXISTING CIRCUITS TO CONFIRM WHICH CIRCUITS ARE SPARE AND/OR FEED AREAS IN SCOPE OF WORK OF THIS PROJECT. IF DESIGNATED CIRCUITS ARE BEING USED FOR AREAS NOT IN SCOPE, E.C. SHALL SUBSTITUTE OTHER AVAILABLE SPARE CIRCUITS.

LIGHTING LEGEND

	2x2 RECESSED LED LIGHT FIXTURE HPR-LED SERIES BY FINELITE HPR-A-2X2-SC0-LED 50-3000K-120V-SC
	2x4 RECESSED LED LIGHT FIXTURE HPR-LED SERIES BY FINELITE HPR-A-2X4-SC0-LED 50-3000K-120V-SC
	RECESSED LED LIGHT BY FINELITE HF4-R-4-50-3500K-120V-SC
	8" SQUARE LED DOWNLIGHT BY GOTHAM EVO-30-30-6AR-LD-120V
	6" LED DOWNLIGHT BY GOTHAM EVO-30-18-6AR-WD-LD-VOLTAGE
	EXIT DIRECTION WITH DIRECTION RECESSED CLG MOUNT - EDGR BY LITHONIA (OR EQ.) V.I.F. EXACT LOCATION TO AVOID OPEN WEB JOIST WALL MOUNT WHERE POSSIBLE



1st FLOOR LIGHTING PLAN
SCALE: 1/8" = 1'-0"

LIGHTING DRAWING NOTES:

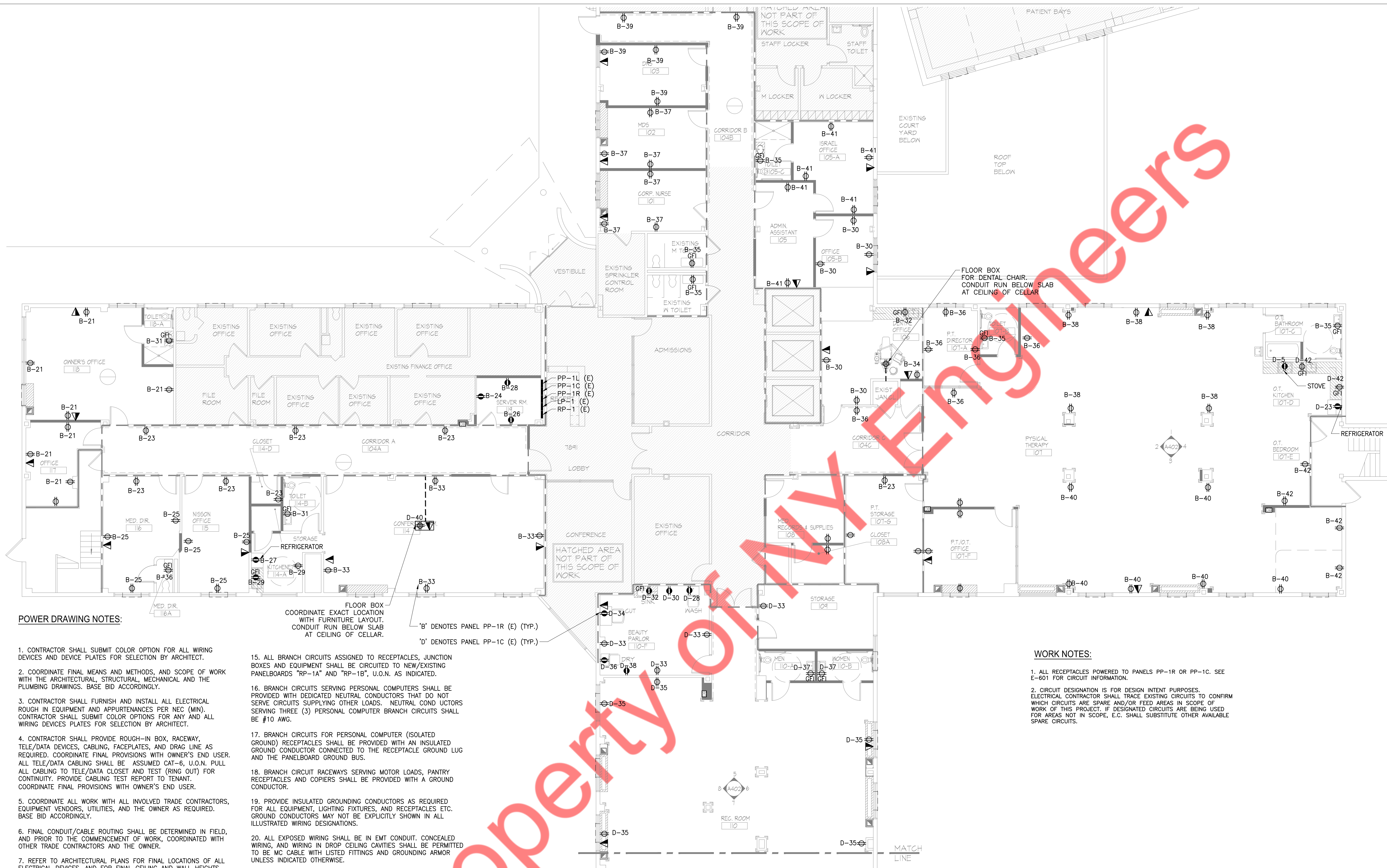
- REFER TO NEC TABLE 310.15(B)(16) FOR AMPACITIES OF CONDUCTORS; 75°C TERMINALS, 40°C AMBIENT TEMPERATURE.
- ALL WIRING SHALL BE PROPERLY IDENTIFIED PER NEC 310.12 AND AS REQUIRED.
- WHERE MORE THAN THREE CURRENT CARRYING CONDUCTORS PER RACEWAY IS USED, NEC TABLE 10.15(B)(2)(A) DERATING FACTORS SHALL BE APPLIED. IN ADDITION, CONDUIT FILL SHALL COMPLY WITH NEC 344.22 AND 352.22 RESPECTIVELY.
- REFER TO ARCHITECTURAL PLANS FOR FINAL LOCATIONS OF ALL LUMINAIRES AND SWITCHES, AND FOR ALL FINISHED CEILING HEIGHTS.
- REFER TO ARCHITECTURAL PLANS FOR FINAL LOCATIONS OF ALL LIGHTING FIXTURE AND CONTROL DEVICES, AND FOR FINAL CEILING AND WALL HEIGHTS AND LAYOUTS.
- REFER TO ARCHITECTURAL PLANS FOR FINAL LUMINAIRE AND LAMPING SPECIFICATIONS.
- SUBMIT COLOR OPTIONS FOR ALL LIGHTING FIXTURES AND CONTROL DEVICES FOR SELECTION BY ARCHITECT.
- COORDINATE FIXTURE STYLE WITH CEILING SYSTEM THE FIXTURE IS TO BE INSTALLED IN OR ON. LAY-IN FIXTURE FRAME STYLE SHALL MATCH THE CEILING GRID/ SYSTEM. SURFACE MOUNTED FIXTURES SHALL MAINTAIN THE INTENDED CEILING FIRE RATINGS.
- REFER TO ARCHITECTURAL DRAWINGS FOR ROOM NAMES AND NUMBERS.
- FOR CLARITY, SOME FIXTURE & SWITCH INTERCONNECTING WIRING IS NOT EXPLICITLY SHOWN. CONTRACTOR SHALL USE SWITCHING DESIGNATIONS, HOME RUN REFERENCES, AND APPLICABLE DETAILS TO DERIVE THE COMPLETE SCOPE OF LIGHTING WIRING INTENT.
- HOMERUNS ARE SHOWN IN LOCATIONS FOR DRAWING CLARITY. CONTRACTOR MAY CHOOSE TO FEED POWER FROM OTHER LOCATIONS AS LONG AS FUNCTIONAL INTENT IS MAINTAINED, AND FIELD DRAWINGS APPROPRIATELY MARKED.
- NUMBER(S) SHOWN AT LIGHTING FIXTURES AND ASSOCIATED JUNCTION BOXES INDICATES CIRCUIT NUMBERS IN PANELBOARD. PROVIDE WIRE AND CONDUIT TO INTERCONNECT EQUIPMENT AND ASSOCIATED CONTROL DEVICES WITH SAME CIRCUIT NUMBERS AND RUN TO PANELBOARD.
- ALL BRANCH CIRCUITS ASSIGNED TO LIGHTING FIXTURES SHALL BE CIRCUITED TO EXISTING PANELBOARDS "PP-1L", U.O.N. AS INDICATED.
- CIRCUITING FOR LIGHTING FIXTURES IN ROOMS WITH TOGGLE SWITCHES SHALL BE CONTROLLED BY DESIGNATED SWITCHES. IF SPECIFIC DESIGNATION IS NOT INDICATED, ALL LIGHTING FIXTURES IN ROOM/AREA SHALL BE CONTROLLED BY THE SWITCH INDICATED.
- BRANCH CIRCUITS FOR DIMMER CONTROLLED LIGHTING FIXTURES SHALL BE PROVIDED WITH A SEPARATE NEUTRAL CONDUCTOR FOR EACH PHASE CONDUCTOR.
- LIGHTING FIXTURES PROVIDED WITH EMERGENCY BATTERY PACKS AND INDICATED WITH SWITCH CONTROL SHALL BE WIRED WITH BATTERY CHARGING/SENSING CIRCUIT WIRED AHEAD OF SWITCH CONTROL.
- WIRING OF LIGHTING FIXTURES AND EXIT LIGHTS TO EXISTING CIRCUITS SHALL BE LIMITED TO THE FOLLOWING:
o.1600 WATTS ON A 20A, 120 VOLT CIRCUIT.
- LIGHTING BRANCH CIRCUIT RACEWAY SYSTEM SHALL NOT BE USED FOR RECEPTACLE/POWER CIRCUIT WIRING.
- PROVIDE INSULATED EQUIPMENT GROUNDING CONDUCTORS FOR ALL LIGHTING FIXTURES AS REQUIRED. GROUND CONDUCTORS MAY NOT BE EXPLICITLY SHOWN ON CERTAIN WIRING DESIGNATIONS.
- ALL WIRING TO BE #12AWG WITH #12AWG GND UNLESS OTHERWISE NOTED OR REQUIRED DUE TO CONDUCTOR DERATING FOR MORE THAN THREE CURRENT CARRYING CONDUCTORS PER RACEWAY OR CABLE ASSEMBLY.
- CONDUCTORS OR CABLES INSTALLED IN CONDUIT EXPOSED TO DIRECT SUNLIGHT OR ABOVE ROOFTOPS SHALL BE DERATED AND SIZE-ADJUSTED IN ORDER TO COMPLY WITH NEC 310.15(B)(2)(C).
- ALL EXPOSED WIRING SHALL BE IN EMT CONDUIT. CONCEALED WIRING, AND WIRING IN DROP CEILING CAVITIES SHALL BE PERMITTED TO BE MC CABLE WITH LISTED FITTINGS AND GROUNDING ARMOR UNLESS OTHERWISE NOTED.
- CONTRACTOR SHALL PROVIDE ALL ELECTRICAL ROUGH-IN EQUIPMENT AND APPURTENANCES PER NEC (MIN). CONTRACTOR SHALL SUBMIT COLOR OPTIONS FOR ANY AND ALL WIRING DEVICES AND DEVICE PLATES FOR SELECTION BY ARCHITECT.
- FINAL CONDUIT/CABLE ROUTING SHALL BE DETERMINED IN-FIELD, AND PRIOR TO THE COMMENCEMENT OF WORK. COORDINATED WITH OTHER TRADE CONTRACTORS AND THE TENANT.
- COORDINATE ALL WORK WITH ALL INVOLVED TRADE CONTRACTORS, EQUIPMENT VENDORS, UTILITIES, AND THE OWNER AS REQUIRED. BASE BID ACCORDINGLY.
- ALL EQUIPMENT SHALL BE INSTALLED PER MANUFACTURER'S INSTRUCTIONS.
- FEED NEW EMERGENCY MEANS-OF-EGRESS AND EXIT LIGHTING FIXTURE UNITS FROM NEW/EXISTING PANELBOARD (LP-1/RP-1) AS REQUIRED. POWER SHALL BE UNSWITCHED, AND WITHOUT AUTOMATIC AND/OR MANUAL CONTROLS.

- CONTRACTOR SHALL CONDUCT ALL NECESSARY EMERGENCY LIGHTING TEST(S) FOR THE AUTHORITY HAVING JURISDICTION.
- ALL WIRING AND EQUIPMENT WITHIN DROP CEILING SPACES, AND/OR WITHIN DUCTS, PLENUMS, AND OTHER AIR-HANDLING SPACES SHALL BE LISTED FOR PLENUM USE, AND SHALL CONFORM WITH NEC 300.22.
- IN CASES WHERE EXISTING PANELBOARD FACILITIES ARE BEING USED, CONTRACTOR SHALL FIELD VERIFY AVAILABLE PANELBOARD/CIRCUIT SPACE, AND MAKE ANY AND ALL MODIFICATION(S) AS REQUIRED TO ACCOMMODATE NEW BRANCH CIRCUIT REQUIREMENTS AS INTENDED.
- CONTRACTOR SHALL MEASURE PHASE LOADS (TRUE RMS) OF EXISTING PANELBOARDS UTILIZED TO COMPLETE THE CONTRACT WORK, AND BALANCE NEW LOAD AS REQUIRED.
- REFER TO ELECTRICAL ONE-LINE DIAGRAM, ELECTRICAL PANELBOARD SCHEDULES AND ELECTRICAL DETAILS FOR ADDITIONAL REQUIREMENTS THAT MAY APPLY.
- REFER TO DWG. E-001.00 FOR ELECTRICAL GENERAL NOTES, SYMBOL LIST & ABBREVIATIONS, DWG. E-002.00 FOR ELECTRICAL NOTES AND DWGS. E-003.00 & E-004 FOR ELECTRICAL SPECIFICATIONS.

WORK NOTES:

- ALL LIGHTING FIXTURES TO BE POWERED BY EXISTING PANEL PP-1L.
- COORDINATE EXACT LOCATION OF EXIT LIGHTS WITH ARCHITECT. POWER EMERGENCY LIGHTING CIRCUITS WITH PANEL PP-1L # 42.
- CIRCUIT DESIGNATION IS FOR DESIGN INTENT PURPOSES. ELECTRICAL CONTRACTOR SHALL TRACE EXISTING CIRCUITS TO CONFIRM WHICH CIRCUITS ARE SPARE AND/OR FEED AREAS IN SCOPE OF WORK OF THIS PROJECT. IF DESIGNATED CIRCUITS ARE BEING USED FOR AREAS NOT IN SCOPE, E.C. SHALL SUBSTITUTE OTHER AVAILABLE SPARE CIRCUITS.

Property of NY Engineers



POWER DRAWING NOTES:

1. CONTRACTOR SHALL SUBMIT COLOR OPTION FOR ALL WIRING DEVICES AND DEVICE PLATES FOR SELECTION BY ARCHITECT.
2. COORDINATE FINAL MEANS AND METHODS, AND SCOPE OF WORK WITH THE ARCHITECTURAL, STRUCTURAL, MECHANICAL AND THE PLUMBING DRAWINGS. BASE BID ACCORDINGLY.
3. CONTRACTOR SHALL FURNISH AND INSTALL ALL ELECTRICAL ROUGH IN EQUIPMENT AND APPURTENANCES PER NEC (MIN). CONTRACTOR SHALL SUBMIT COLOR OPTIONS FOR ANY AND ALL WIRING DEVICES PLATES FOR SELECTION BY ARCHITECT.
4. CONTRACTOR SHALL PROVIDE ROUGH-IN BOX, RACEWAY, TELE/DATA DEVICES, CABLING, FACEPLATES, AND DRAG LINE AS REQUIRED. COORDINATE FINAL PROVISIONS WITH OWNER'S END USER. ALL TELE/DATA CABLING SHALL BE ASSUMED CAT-6, U.O.N. PULL ALL CABLING TO TELE/DATA CLOSET AND TEST (RING OUT) FOR CONTINUITY. PROVIDE CABLING TEST REPORT TO TENANT. COORDINATE FINAL PROVISIONS WITH OWNER'S END USER.
5. COORDINATE ALL WORK WITH ALL INVOLVED TRADE CONTRACTORS, EQUIPMENT VENDORS, UTILITIES, AND THE OWNER AS REQUIRED. BASE BID ACCORDINGLY.
6. FINAL CONDUIT/CABLE ROUTING SHALL BE DETERMINED IN FIELD, AND PRIOR TO THE COMMENCEMENT OF WORK, COORDINATED WITH OTHER TRADE CONTRACTORS AND THE OWNER.
7. REFER TO ARCHITECTURAL PLANS FOR FINAL LOCATIONS OF ALL ELECTRICAL DEVICES, AND FOR FINAL CEILING AND WALL HEIGHTS AND LAYOUTS.
8. REFER TO ARCHITECTURAL DRAWINGS FOR ROOM NAMES AND NUMBERS.
9. REFER TO NEC TABLE 310.15(B)(16) FOR AMPACITIES OF CONDUCTORS: 75°C TERMINALS, 40°C AMBIENT TEMPERATURE.
10. ALL WIRING SHALL BE PROPERLY IDENTIFIED PER NEC 310.12 AND AS REQUIRED.
11. REFER TO APPLICABLE EQUIPMENT VENDOR EQUIPMENT SHOP DRAWINGS FOR FINAL RATINGS AND/OR CHARACTERISTICS OF NEW SPECIAL EQUIPMENT DEVICES THAT REQUIRES PROVISIONS BY THE ELECTRICAL CONTRACTOR. BASE BID ACCORDINGLY.
12. ALL EQUIPMENT SHALL BE INSTALLED PER MANUFACTURER'S INSTRUCTIONS.
13. HOMERUNS ARE SHOWN IN LOCATIONS FOR DRAWING CLARITY. CONTRACTOR MAY CHOOSE TO FEED POWER FROM OTHER LOCATIONS AS LONG AS FUNCTIONAL INTENT IS MAINTAINED, AND FIELD DRAWINGS MARKED ACCORDINGLY.
14. NUMBER(S) SHOWN AT RECEPTACLES, JUNCTION BOXES AND EQUIPMENT INDICATES CIRCUIT NUMBERS IN PANELBOARD. PROVIDE WIRE AND CONDUIT TO INTERCONNECT EQUIPMENT AND DEVICES WITH SAME CIRCUIT NUMBERS AND RUN TO PANELBOARD.

15. ALL BRANCH CIRCUITS ASSIGNED TO RECEPTACLES, JUNCTION BOXES AND EQUIPMENT SHALL BE CIRCUITED TO NEW/EXISTING PANELBOARDS "RP-1A" AND "RP-1B", U.O.N. AS INDICATED.
16. BRANCH CIRCUITS SERVING PERSONAL COMPUTERS SHALL BE PROVIDED WITH DEDICATED NEUTRAL CONDUCTORS THAT DO NOT SERVE CIRCUITS SUPPLYING OTHER LOADS. NEUTRAL CONDUCTORS SERVING THREE (3) PERSONAL COMPUTER BRANCH CIRCUITS SHALL BE #10 AWG.
17. BRANCH CIRCUITS FOR PERSONAL COMPUTER (ISOLATED GROUND) RECEPTACLES SHALL BE PROVIDED WITH AN INSULATED GROUND CONDUCTOR CONNECTED TO THE RECEPTACLE GROUND LUG AND THE PANELBOARD GROUND BUS.
18. BRANCH CIRCUIT RACEWAYS SERVING MOTOR LOADS, PANTRY RECEPTACLES AND COPIERS SHALL BE PROVIDED WITH A GROUND CONDUCTOR.
19. PROVIDE INSULATED GROUNDING CONDUCTORS AS REQUIRED FOR ALL EQUIPMENT, LIGHTING FIXTURES, AND RECEPTACLES ETC. GROUND CONDUCTORS MAY NOT BE EXPLICITLY SHOWN IN ALL ILLUSTRATED WIRING DESIGNATIONS.
20. ALL EXPOSED WIRING SHALL BE IN EMT CONDUIT. CONCEALED WIRING, AND WIRING IN DROP CEILING CAVITIES SHALL BE PERMITTED TO BE MC CABLE WITH LISTED FITTINGS AND GROUNDING ARMOR UNLESS INDICATED OTHERWISE.
21. WHERE MORE THAN THREE CURRENT CARRYING CONDUCTORS PER RACEWAY IS USED, NEC TABLE 310.15(B)(2)(A) DERATING FACTORS SHALL BE APPLIED. IN ADDITION, CONDUIT FILL SHALL COMPLY WITH NEC 344.22 AND 352.22 RESPECTIVELY.
22. CONDUCTORS OR CABLES INSTALLED IN CONDUIT EXPOSED TO DIRECT SUNLIGHT ON OR ABOVE ROOFTOPS SHALL BE DERATED AND SIZE-ADJUSTED IN ORDER TO COMPLY WITH NEC 310.15(B)(2)(C).
23. ALL WIRING AND EQUIPMENT WITHIN DROP CEILING SPACES, AND/OR WITHIN DUCTS, PLENUMS, AND OTHER AIR-HANDLING SPACES SHALL BE LISTED FOR PLENUM USE, AND SHALL CONFORM WITH NEC 300.22.
24. IN CASES WHERE EXISTING PANELBOARD FACILITIES ARE BEING USED, CONTRACTOR SHALL FIELD VERIFY AVAILABLE PANELBOARD/CIRCUIT SPACE, AND MAKE ANY AND ALL MODIFICATION(S) AS REQUIRED TO ACCOMMODATE NEW BRANCH CIRCUIT REQUIREMENTS AS INTENDED.
25. CONTRACTOR SHALL MEASURE PHASE LOADS (TRUE RMS) OF NEW AND EXISTING PANEL BOARDS UTILIZED TO COMPLETE THE CONTRACT WORK, AND BALANCE NEW LOAD AS REQUIRED.
26. REFER TO ELECTRICAL ONE-LINE DIAGRAM, PANELBOARD SCHEDULES AND ELECTRICAL DETAILS FOR ADDITIONAL REQUIREMENTS THAT MAY APPLY.

FLOOR BOX COORDINATE EXACT LOCATION WITH FURNITURE LAYOUT. CONDUIT RUN BELOW SLAB AT CEILING OF CELLAR.

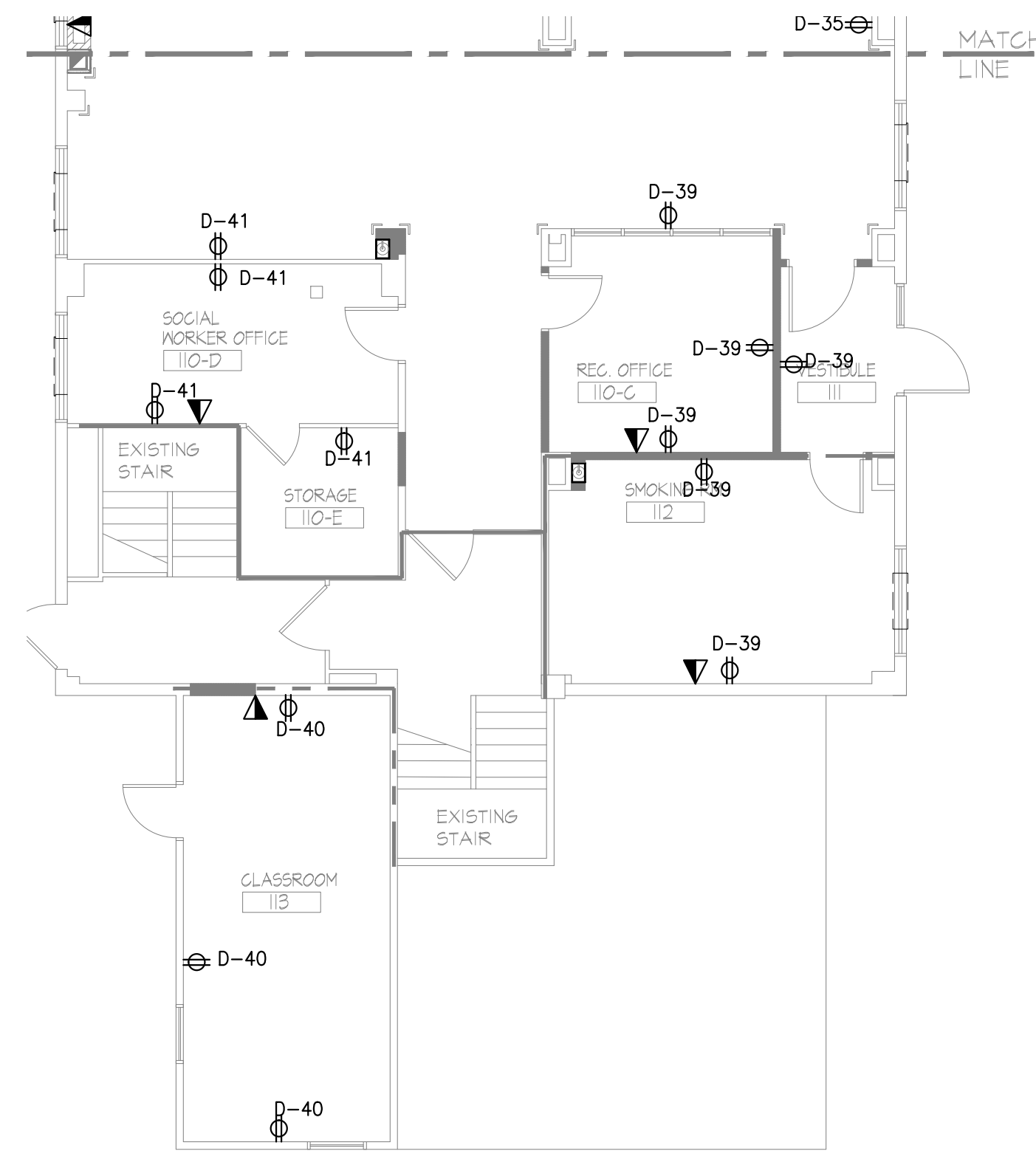
'B' DENOTES PANEL PP-1R (E) (TYP.)

'D' DENOTES PANEL PP-1C (E) (TYP.)

WORK NOTES:

1. ALL RECEPTACLES POWERED TO PANELS PP-1R OR PP-1C. SEE E-601 FOR CIRCUIT INFORMATION.
2. CIRCUIT DESIGNATION IS FOR DESIGN INTENT PURPOSES. ELECTRICAL CONTRACTOR SHALL TRACE EXISTING CIRCUITS TO CONFIRM WHICH CIRCUITS ARE SPARE AND/OR FEED AREAS IN SCOPE OF WORK OF THIS PROJECT. IF DESIGNATED CIRCUITS ARE BEING USED FOR AREAS NOT IN SCOPE, E.C. SHALL SUBSTITUTE OTHER AVAILABLE SPARE CIRCUITS.

1 1st FLOOR POWER PLAN
SCALE: 1/8" = 1'-0"

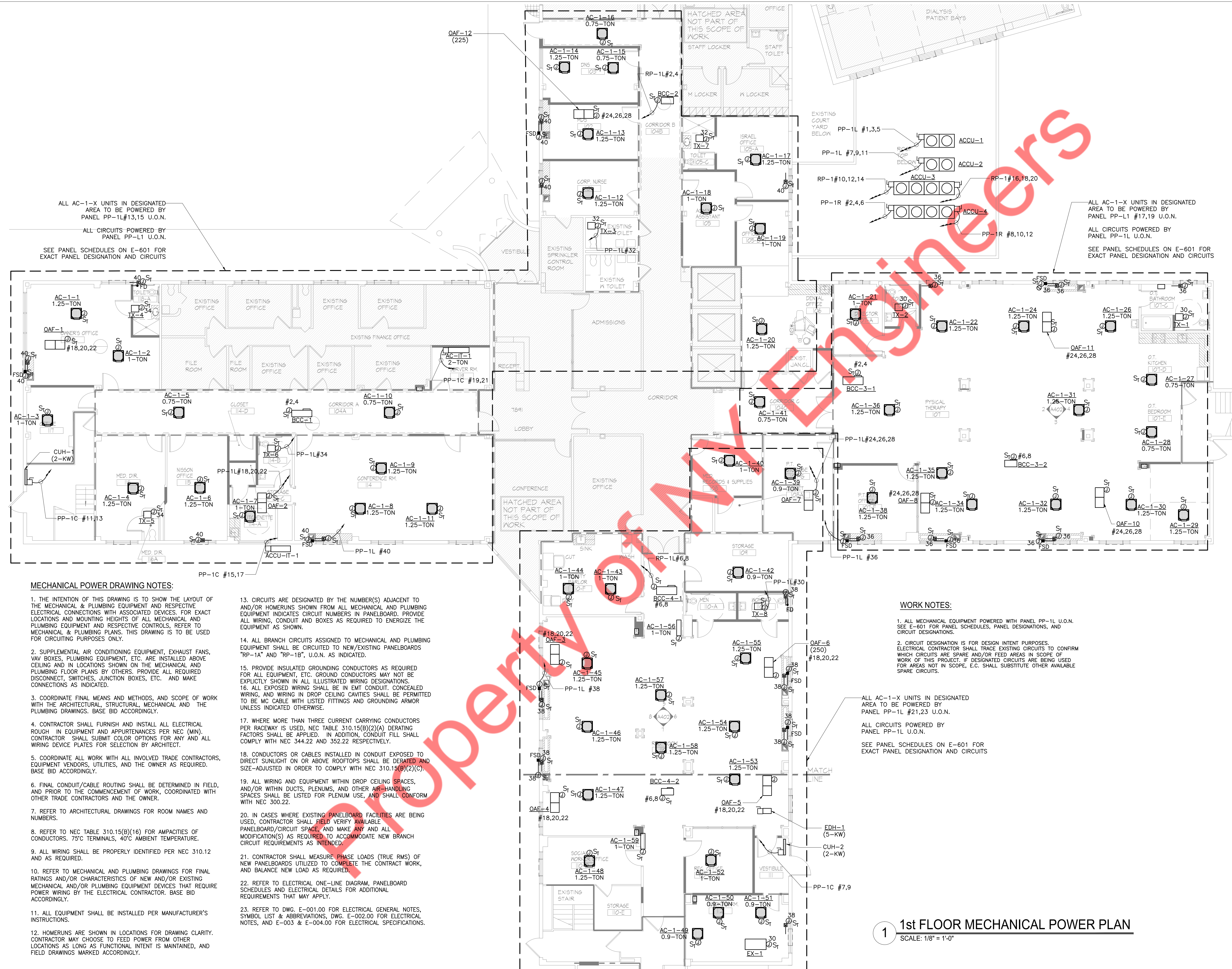


1 1st FLOOR POWER PLAN
SCALE: 1/8" = 1'-0"

POWER DRAWING NOTES:

1. CONTRACTOR SHALL SUBMIT COLOR OPTION FOR ALL WIRING DEVICES AND DEVICE PLATES FOR SELECTION BY ARCHITECT.
2. COORDINATE FINAL MEANS AND METHODS, AND SCOPE OF WORK WITH THE ARCHITECTURAL, STRUCTURAL, MECHANICAL AND THE PLUMBING DRAWINGS. BASE BID ACCORDINGLY.
3. CONTRACTOR SHALL FURNISH AND INSTALL ALL ELECTRICAL ROUGH IN EQUIPMENT AND APPURTENANCES PER NEC (MIN). CONTRACTOR SHALL SUBMIT COLOR OPTIONS FOR ANY AND ALL WIRING DEVICES PLATES FOR SELECTION BY ARCHITECT.
4. CONTRACTOR SHALL PROVIDE ROUGH-IN BOX, RACEWAY, TELE/DATA DEVICES, CABLING, FACEPLATES, AND DRAG LINE AS REQUIRED. COORDINATE FINAL PROVISIONS WITH OWNER'S END USER. ALL TELE/DATA CABLING SHALL BE ASSUMED CAT-6, U.O.N. PULL ALL CABLING TO TELE/DATA CLOSET AND TEST (RING OUT) FOR CONTINUITY. PROVIDE CABLING TEST REPORT TO TENANT. COORDINATE FINAL PROVISIONS WITH OWNER'S END USER.
5. COORDINATE ALL WORK WITH ALL INVOLVED TRADE CONTRACTORS, EQUIPMENT VENDORS, UTILITIES, AND THE OWNER AS REQUIRED. BASE BID ACCORDINGLY.
6. FINAL CONDUIT/CABLE ROUTING SHALL BE DETERMINED IN FIELD, AND PRIOR TO THE COMMENCEMENT OF WORK, COORDINATED WITH OTHER TRADE CONTRACTORS AND THE OWNER.
7. REFER TO ARCHITECTURAL PLANS FOR FINAL LOCATIONS OF ALL ELECTRICAL DEVICES, AND FOR FINAL CEILING AND WALL HEIGHTS AND LAYOUTS.
8. REFER TO ARCHITECTURAL DRAWINGS FOR ROOM NAMES AND NUMBERS.
9. REFER TO NEC TABLE 310.15(B)(16) FOR AMPACITIES OF CONDUCTORS: 75°C TERMINALS, 40°C AMBIENT TEMPERATURE.
10. ALL WIRING SHALL BE PROPERLY IDENTIFIED PER NEC 310.12 AND AS REQUIRED.
11. REFER TO APPLICABLE EQUIPMENT VENDOR EQUIPMENT SHOP DRAWINGS FOR FINAL RATINGS AND/OR CHARACTERISTICS OF NEW SPECIAL EQUIPMENT DEVICES THAT REQUIRES PROVISIONS BY THE ELECTRICAL CONTRACTOR. BASE BID ACCORDINGLY.
12. ALL EQUIPMENT SHALL BE INSTALLED PER MANUFACTURER'S INSTRUCTIONS.
13. HOMERUNS ARE SHOWN IN LOCATIONS FOR DRAWING CLARITY. CONTRACTOR MAY CHOOSE TO FEED POWER FROM OTHER LOCATIONS AS LONG AS FUNCTIONAL INTENT IS MAINTAINED, AND FIELD DRAWINGS MARKED ACCORDINGLY.
14. NUMBER(S) SHOWN AT RECEPTACLES, JUNCTION BOXES AND EQUIPMENT INDICATES CIRCUIT NUMBERS IN PANELBOARD. PROVIDE WIRE AND CONDUIT TO INTERCONNECT EQUIPMENT AND DEVICES WITH SAME CIRCUIT NUMBERS AND RUN TO PANELBOARD.

15. ALL BRANCH CIRCUITS ASSIGNED TO RECEPTACLES, JUNCTION BOXES AND EQUIPMENT SHALL BE CIRCUITED TO NEW/EXISTING PANELBOARDS "RP-1A" AND "RP-1B", U.O.N. AS INDICATED.
16. BRANCH CIRCUITS SERVING PERSONAL COMPUTERS SHALL BE PROVIDED WITH DEDICATED NEUTRAL CONDUCTORS THAT DO NOT SERVE CIRCUITS SUPPLYING OTHER LOADS. NEUTRAL CONDUCTORS SERVING THREE (3) PERSONAL COMPUTER BRANCH CIRCUITS SHALL BE #10 AWG.
17. BRANCH CIRCUITS FOR PERSONAL COMPUTER (ISOLATED GROUND) RECEPTACLES SHALL BE PROVIDED WITH AN INSULATED GROUND CONDUCTOR CONNECTED TO THE RECEPTACLE GROUND BUS AND THE PANELBOARD GROUND BUS.
18. BRANCH CIRCUIT RACEWAYS SERVING MOTOR LOADS, PANTRY RECEPTACLES AND COPIERS SHALL BE PROVIDED WITH A GROUND CONDUCTOR.
19. PROVIDE INSULATED GROUNDING CONDUCTORS AS REQUIRED FOR ALL EQUIPMENT, LIGHTING FIXTURES, AND RECEPTACLES ETC. GROUND CONDUCTORS MAY NOT BE EXPLICITLY SHOWN IN ALL ILLUSTRATED WIRING DESIGNATIONS.
20. ALL EXPOSED WIRING SHALL BE IN EMT CONDUIT. CONCEALED WIRING, AND WIRING IN DROP CEILING CAVITIES SHALL BE PERMITTED TO BE MC CABLE WITH LISTED FITTINGS AND GROUNDING ARMOR UNLESS INDICATED OTHERWISE.
21. WHERE MORE THAN THREE CURRENT CARRYING CONDUCTORS PER RACEWAY IS USED, NEC TABLE 310.15(B)(2)(A) DERATING FACTORS SHALL BE APPLIED. IN ADDITION, CONDUIT FILL SHALL COMPLY WITH NEC 344.22 AND 352.22 RESPECTIVELY.
22. CONDUCTORS OR CABLES INSTALLED IN CONDUIT EXPOSED TO DIRECT SUNLIGHT ON OR ABOVE ROOFTOPS SHALL BE DERATED AND SIZE-ADJUSTED IN ORDER TO COMPLY WITH NEC 310.15(B)(2)(C).
23. ALL WIRING AND EQUIPMENT WITHIN DROP CEILING SPACES, AND/OR WITHIN DUCTS, PLENUMS, AND OTHER AIR-HANDLING SPACES SHALL BE LISTED FOR PLENUM USE, AND SHALL CONFORM WITH NEC 300.22.
24. IN CASES WHERE EXISTING PANELBOARD FACILITIES ARE BEING USED, CONTRACTOR SHALL FIELD VERIFY AVAILABLE PANELBOARD/CIRCUIT SPACE, AND MAKE ANY AND ALL MODIFICATION(S) AS REQUIRED TO ACCOMMODATE NEW BRANCH CIRCUIT REQUIREMENTS AS INTENDED.
25. CONTRACTOR SHALL MEASURE PHASE LOADS (TRUE RMS) OF NEW AND EXISTING PANEL BOARDS UTILIZED TO COMPLETE THE CONTRACT WORK, AND BALANCE NEW LOAD AS REQUIRED.
26. REFER TO ELECTRICAL ONE-LINE DIAGRAM, PANELBOARD SCHEDULES AND ELECTRICAL DETAILS FOR ADDITIONAL REQUIREMENTS THAT MAY APPLY.



ALL AC-1-X UNITS IN DESIGNATED AREA TO BE POWERED BY PANEL PP-1L #13,15 U.O.N.
 ALL CIRCUITS POWERED BY PANEL PP-1L U.O.N.
 SEE PANEL SCHEDULES ON E-601 FOR EXACT PANEL DESIGNATION AND CIRCUITS

ALL AC-1-X UNITS IN DESIGNATED AREA TO BE POWERED BY PANEL PP-1L #17,19 U.O.N.
 ALL CIRCUITS POWERED BY PANEL PP-1L U.O.N.
 SEE PANEL SCHEDULES ON E-601 FOR EXACT PANEL DESIGNATION AND CIRCUITS

MECHANICAL POWER DRAWING NOTES:

1. THE INTENTION OF THIS DRAWING IS TO SHOW THE LAYOUT OF THE MECHANICAL & PLUMBING EQUIPMENT AND RESPECTIVE ELECTRICAL CONNECTIONS WITH ASSOCIATED DEVICES. FOR EXACT LOCATIONS AND MOUNTING HEIGHTS OF ALL MECHANICAL AND PLUMBING EQUIPMENT AND RESPECTIVE CONTROLS, REFER TO MECHANICAL & PLUMBING PLANS. THIS DRAWING IS TO BE USED FOR CIRCUITING PURPOSES ONLY.
2. SUPPLEMENTAL AIR CONDITIONING EQUIPMENT, EXHAUST FANS, VAV BOXES, PLUMBING EQUIPMENT, ETC. ARE INSTALLED ABOVE CEILING AND IN LOCATIONS SHOWN ON THE MECHANICAL AND PLUMBING FLOOR PLANS BY OTHERS. PROVIDE ALL REQUIRED DISCONNECT, SWITCHES, JUNCTION BOXES, ETC. AND MAKE CONNECTIONS AS INDICATED.
3. COORDINATE FINAL MEANS AND METHODS, AND SCOPE OF WORK WITH THE ARCHITECTURAL, STRUCTURAL, MECHANICAL AND THE PLUMBING DRAWINGS. BASE BID ACCORDINGLY.
4. CONTRACTOR SHALL FURNISH AND INSTALL ALL ELECTRICAL ROUGH IN EQUIPMENT AND APPURTENANCES PER NEC (MIN). CONTRACTOR SHALL SUBMIT COLOR OPTIONS FOR ANY AND ALL WIRING DEVICE PLATES FOR SELECTION BY ARCHITECT.
5. COORDINATE ALL WORK WITH ALL INVOLVED TRADE CONTRACTORS, EQUIPMENT VENDORS, UTILITIES, AND THE OWNER AS REQUIRED. BASE BID ACCORDINGLY.
6. FINAL CONDUIT/CABLE ROUTING SHALL BE DETERMINED IN FIELD, AND PRIOR TO THE COMMENCEMENT OF WORK, COORDINATED WITH OTHER TRADE CONTRACTORS AND THE OWNER.
7. REFER TO ARCHITECTURAL DRAWINGS FOR ROOM NAMES AND NUMBERS.
8. REFER TO NEC TABLE 310.15(B)(16) FOR AMPACITIES OF CONDUCTORS. 75°C TERMINALS, 40°C AMBIENT TEMPERATURE.
9. ALL WIRING SHALL BE PROPERLY IDENTIFIED PER NEC 310.12 AND AS REQUIRED.
10. REFER TO MECHANICAL AND PLUMBING DRAWINGS FOR FINAL RATINGS AND/OR CHARACTERISTICS OF NEW AND/OR EXISTING MECHANICAL AND/OR PLUMBING EQUIPMENT DEVICES THAT REQUIRE POWER WIRING BY THE ELECTRICAL CONTRACTOR. BASE BID ACCORDINGLY.
11. ALL EQUIPMENT SHALL BE INSTALLED PER MANUFACTURER'S INSTRUCTIONS.
12. HOMERUNS ARE SHOWN IN LOCATIONS FOR DRAWING CLARITY. CONTRACTOR MAY CHOOSE TO FEED POWER FROM OTHER LOCATIONS AS LONG AS FUNCTIONAL INTENT IS MAINTAINED, AND FIELD DRAWINGS MARKED ACCORDINGLY.

13. CIRCUITS ARE DESIGNATED BY THE NUMBER(S) ADJACENT TO AND/OR HOMERUNS SHOWN FROM ALL MECHANICAL AND PLUMBING EQUIPMENT INDICATES CIRCUIT NUMBERS IN PANELBOARD. PROVIDE ALL WIRING, CONDUIT AND BOXES AS REQUIRED TO ENERGIZE THE EQUIPMENT AS SHOWN.
14. ALL BRANCH CIRCUITS ASSIGNED TO MECHANICAL AND PLUMBING EQUIPMENT SHALL BE CIRCUITED TO NEW/EXISTING PANELBOARDS "RP-1A" AND "RP-1B", U.O.N. AS INDICATED.
15. PROVIDE INSULATED GROUNDING CONDUCTORS AS REQUIRED FOR ALL EQUIPMENT, ETC. GROUND CONDUCTORS MAY NOT BE EXPLICITLY SHOWN IN ALL ILLUSTRATED WIRING DESIGNATIONS.
16. ALL EXPOSED WIRING SHALL BE IN EMT CONDUIT. CONCEALED WIRING, AND WIRING IN DROP CEILING CAVITIES SHALL BE PERMITTED TO BE MC CABLE WITH LISTED FITTINGS AND GROUNDING ARMOR UNLESS INDICATED OTHERWISE.
17. WHERE MORE THAN THREE CURRENT CARRYING CONDUCTORS PER RACEWAY IS USED, NEC TABLE 310.15(B)(2)(A) DERATING FACTORS SHALL BE APPLIED. IN ADDITION, CONDUIT FILL SHALL COMPLY WITH NEC 344.22 AND 352.22 RESPECTIVELY.
18. CONDUCTORS OR CABLES INSTALLED IN CONDUIT EXPOSED TO DIRECT SUNLIGHT ON OR ABOVE ROOFTOPS SHALL BE DERATED AND SIZE-ADJUSTED IN ORDER TO COMPLY WITH NEC 310.15(B)(2)(C).
19. ALL WIRING AND EQUIPMENT WITHIN DROP CEILING SPACES, AND/OR WITHIN DUCTS, PLENUMS, AND OTHER AIR-HANDLING SPACES SHALL BE LISTED FOR PLENUM USE, AND SHALL CONFORM WITH NEC 300.22.
20. IN CASES WHERE EXISTING PANELBOARD FACILITIES ARE BEING USED, CONTRACTOR SHALL FIELD VERIFY AVAILABLE PANELBOARD/CIRCUIT SPACE, AND MAKE ANY AND ALL MODIFICATION(S) AS REQUIRED TO ACCOMMODATE NEW BRANCH CIRCUIT REQUIREMENTS AS INTENDED.
21. CONTRACTOR SHALL MEASURE PHASE LOADS (TRUE RMS) OF NEW PANELBOARDS UTILIZED TO COMPLETE THE CONTRACT WORK, AND BALANCE NEW LOAD AS REQUIRED.
22. REFER TO ELECTRICAL ONE-LINE DIAGRAM, PANELBOARD SCHEDULES AND ELECTRICAL DETAILS FOR ADDITIONAL REQUIREMENTS THAT MAY APPLY.
23. REFER TO DWG. E-001.00 FOR ELECTRICAL GENERAL NOTES, SYMBOL LIST & ABBREVIATIONS, DWG. E-002.00 FOR ELECTRICAL NOTES, AND E-003 & E-004.00 FOR ELECTRICAL SPECIFICATIONS.

WORK NOTES:

1. ALL MECHANICAL EQUIPMENT POWERED WITH PANEL PP-1L U.O.N. SEE E-601 FOR PANEL SCHEDULES, PANEL DESIGNATIONS, AND CIRCUIT DESIGNATIONS.
2. CIRCUIT DESIGNATION IS FOR DESIGN INTENT PURPOSES. ELECTRICAL CONTRACTOR SHALL TRACE EXISTING CIRCUITS TO CONFIRM WHICH CIRCUITS ARE SPARE AND/OR FEED AREAS IN SCOPE OF WORK OF THIS PROJECT. IF DESIGNATED CIRCUITS ARE BEING USED FOR AREAS NOT IN SCOPE, E.C. SHALL SUBSTITUTE OTHER AVAILABLE SPARE CIRCUITS.

ALL AC-1-X UNITS IN DESIGNATED AREA TO BE POWERED BY PANEL PP-1L #21,23 U.O.N.
 ALL CIRCUITS POWERED BY PANEL PP-1L U.O.N.
 SEE PANEL SCHEDULES ON E-601 FOR EXACT PANEL DESIGNATION AND CIRCUITS

1 1st FLOOR MECHANICAL POWER PLAN
 SCALE: 1/8" = 1'-0"