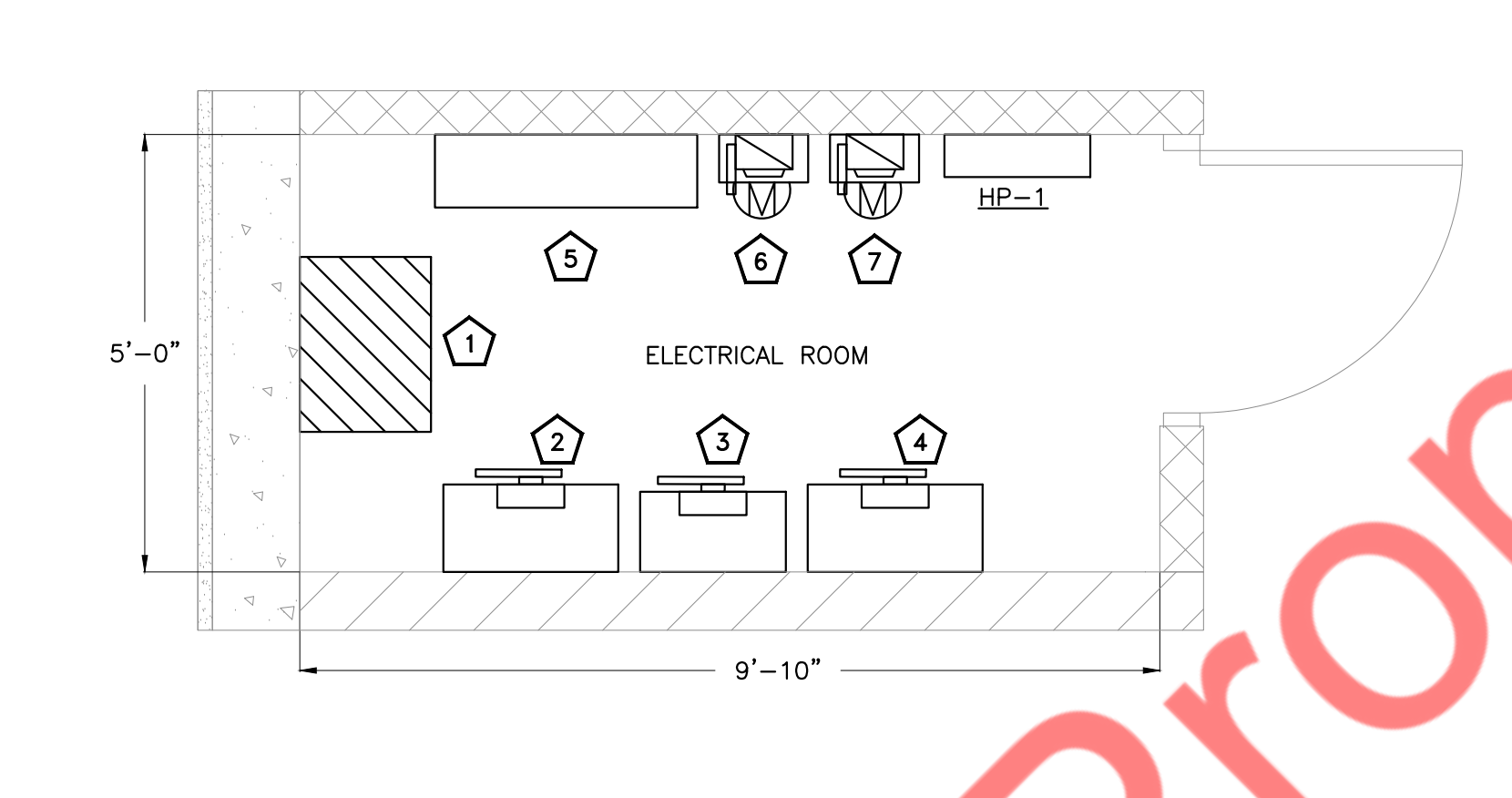


1 CELLAR ELECTRICAL POWER PLAN

SCALE: 3/16" = 1'-0"

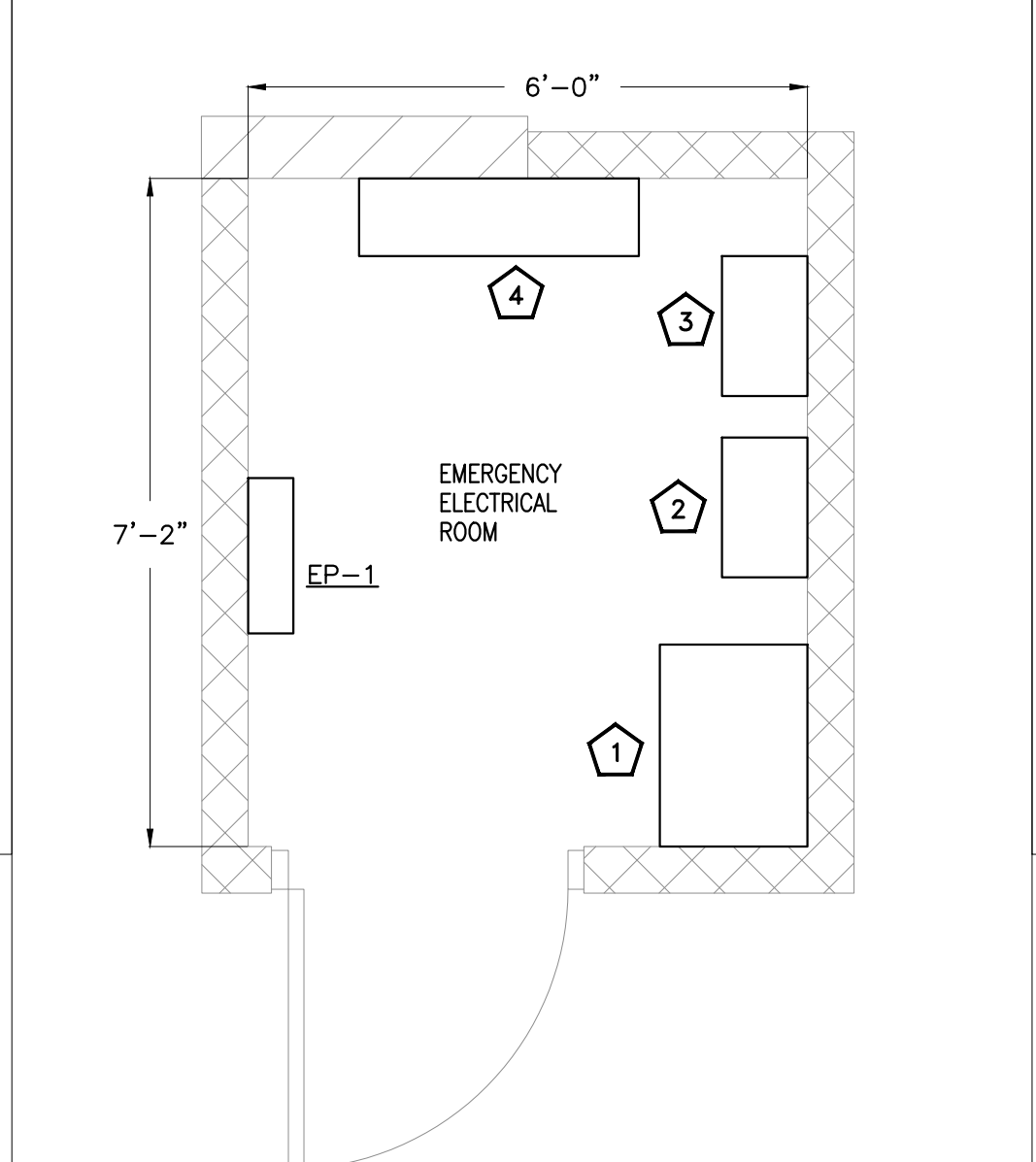


2 ELECTRICAL ROOM PART PLAN

SCALE: 1/2" = 1'-0"

ELECTRICAL ROOM LEGEND:

- 1 SERVICE END BOX CON-ED SPEC EO-9525-B 800A.
- 2 SS#1 600A TRANS-S CABINET FOR HOTEL SPACE.
- 3 SS#2 400A TRANS-S CABINET FOR AMBULATORY AREA.
- 4 SS#3 600A TRANS-S CABINET FOR SBP.
- 5 600A MAIN DISTRIBUTION PANEL FOR HOTEL SPACE.
- 6 FACP DISCONNECT SWITCH AND METER ARE STACKED FOR HOTEL AREA.
- 7 HP-1 DISCONNECT SWITCH AND METER ARE STACKED FOR BASEBUILDING LOADS.



3 ELECTRICAL EMERGENCY ROOM PART PLAN

SCALE: 1/2" = 1'-0"

ELECTRICAL EMERGENCY ROOM LEGEND:

- 1 400A ATS-1 FOR SBP.
- 2 30A ATS-2 FOR FACP-HOTEL AREA.
- 3 200A ATS-3 FOR EMDP-1.
- 4 200A EMDP-1 PANEL.

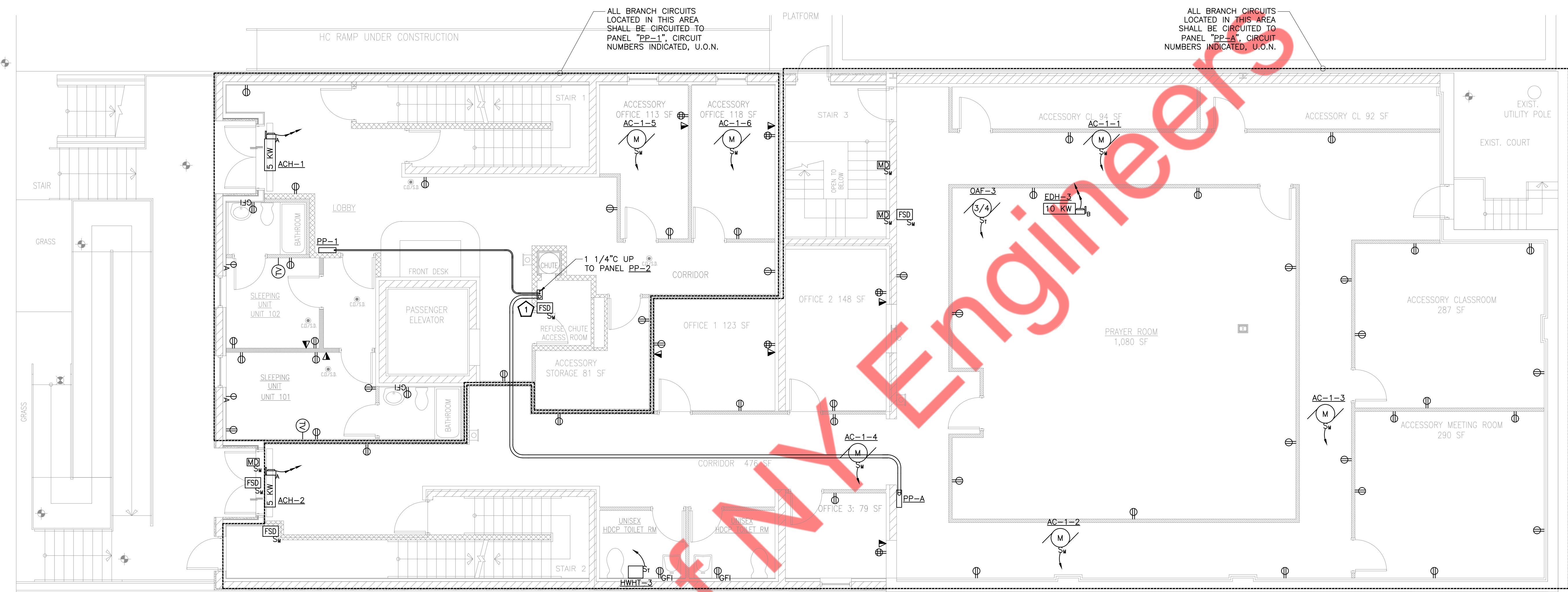
KEYED WORK NOTES:

- 1 ELECTRICAL CONTRACTOR TO PROVIDE FIRE STOPPING MATERIAL BETWEEN CONDUIT AND WALL.

POWER DRAWING NOTES:

1. ALL BRANCH CIRCUITS HOMERUNS ASSIGN INDICATED ON THIS PLAN SHALL BE CIRCUITED TO PANEL SHOWN ON THE PLANS, CIRCUIT NUMBER INDICATED, U.O.N.
2. REFER TO DWG. E-001.00 FOR ELECTRICAL GENERAL NOTES, SYMBOL LIST & ABBREVIATIONS, AND TO FOR ADDITIONAL ELECTRICAL SPECIFICATIONS.

DOB STAMP



1 FIRST FLOOR ELECTRICAL POWER PLAN
SCALE: 3/16" = 1'-0"

KEYED WORK NOTES:

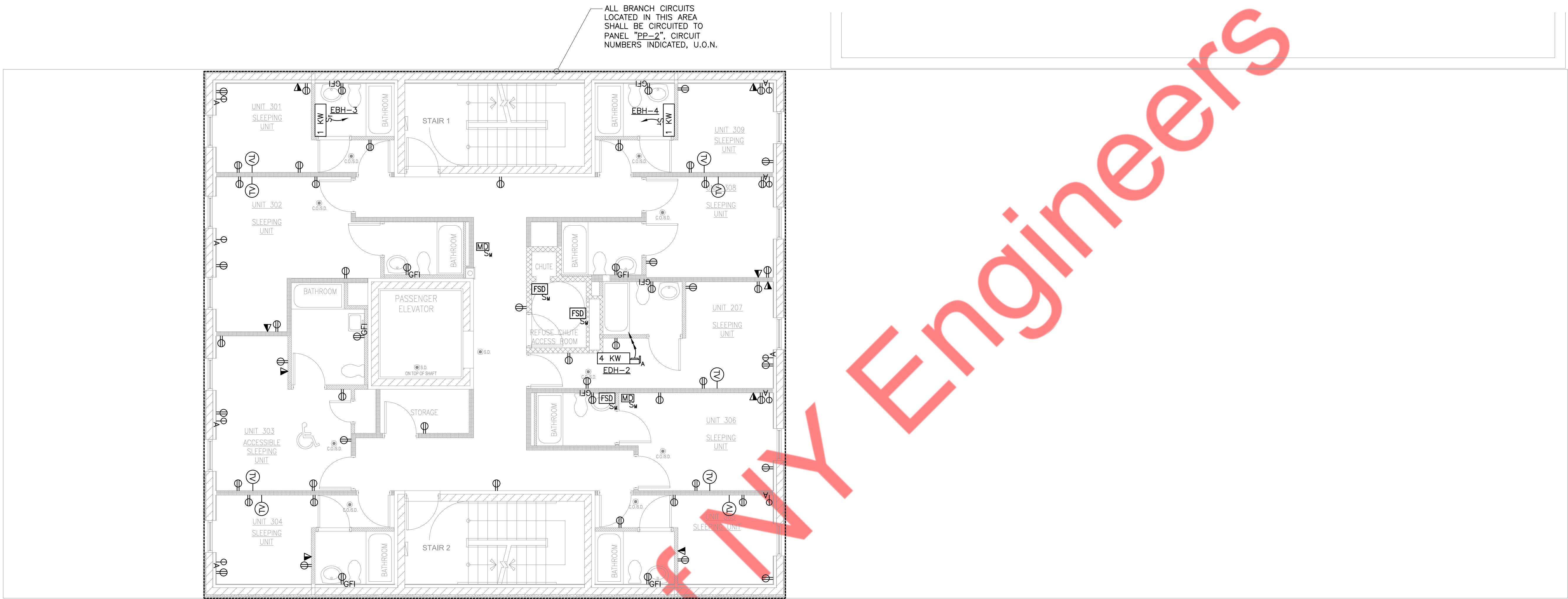
- ① ELECTRICAL CONTRACTOR TO PROVIDE FIRE STOPPING MATERIAL BETWEEN CONDUIT AND WALL.

POWER DRAWING NOTES:

1. ALL BRANCH CIRCUITS HOMERUNS ASSIGN INDICATED ON THIS PLAN SHALL BE CIRCUITED TO PANEL SHOWN ON THE PLANS, CIRCUIT NUMBER INDICATED, U.O.N.
2. REFER TO DWG. E-001.00 FOR ELECTRICAL GENERAL NOTES, SYMBOL LIST & ABBREVIATIONS, AND TO FOR ADDITIONAL ELECTRICAL SPECIFICATIONS.

DOB STAMP

Property of **ONYX ENGINEERS**



1 THIRD FLOOR ELECTRICAL POWER PLAN
SCALE: 3/16" = 1'-0"

Property of M.V. Engineers

- POWER DRAWING NOTES:**
1. ALL BRANCH CIRCUITS HOMERUNS ASSIGN INDICATED ON THIS PLAN SHALL BE CIRCUITED TO PANEL SHOWN ON THE PLANS, CIRCUIT NUMBER INDICATED, U.O.N.
 2. REFER TO DWG. E-001.00 FOR ELECTRICAL GENERAL NOTES, SYMBOL LIST & ABBREVIATIONS, AND TO FOR ADDITIONAL ELECTRICAL SPECIFICATIONS.

DOB STAMP

It is dire

1
2
ME
PRO
PRO
DRA
SEA
DOE

