

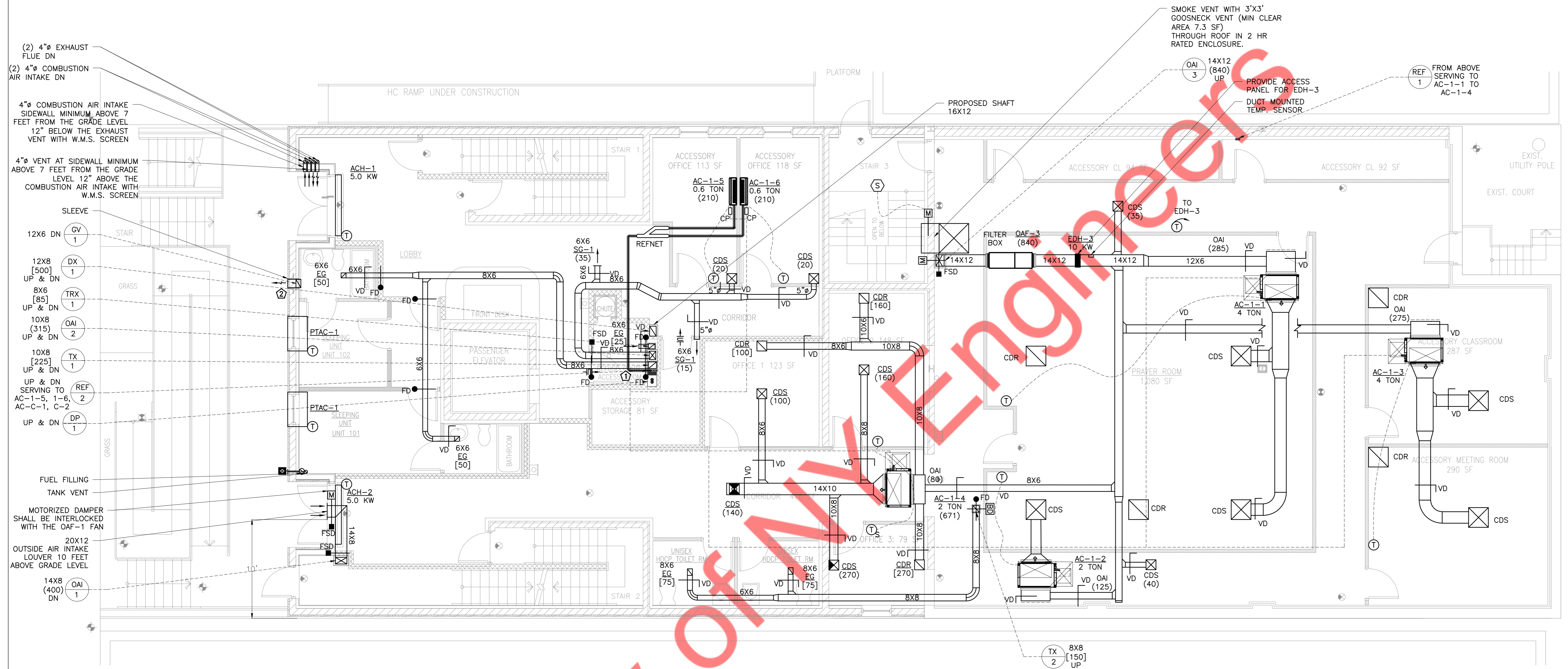
- 4"Ø COMBUSTION AIR INTAKE AND VENT UP
- 12X6 UP (GV 1)
- 2 HR FIRE RATED WALLS
- LEAK DETECTOR
- FUEL TANK AND ACCESSORIES TO BE DETERMINED
- DIESEL TANK 100 GALLONS CAPACITY
- FUEL FILLING
- TANK VENT
- 14X8 (400) UP (OAI 1)

- PROPOSED SHAFT 16X12
- 12X8 [500] UP (DX 1)
- 6X6 [60] UP (TRX 1)
- 8X8 (220) UP (OAI 2)
- 8X6 [125] UP (TX 1)
- FROM ABOVE SERVING AC-C-1 & AC-C-2 (REF 2)
- HOT WATER HEATERS (PROVIDED BY PLUMBING CONTRACTOR)
- DP 1 UP

1 CELLAR MECHANICAL PLAN
SCALE: 3/16" = 1'-0"

- KEY NOTES:**
- ① NYE DESIGN BASED ON 250 CFM EXHAUST PER DRYER.
 - ② 1 1/4" CD TO NEAREST FLOOR DRAIN W/ AIR GAP. COORDINATE W/PLUMBING DRAWING.
 - ③ CEILING AS RETURN PLENUM
 - ④ PROVIDE CLEAN OUT WITH FIRE RATED ACCESS PANEL
 - ⑤ HORIZONTAL PIPING OFFSETS AFTER FUEL TANK ROOM SHALL BE ENCLOSED IN CONSTRUCTION HAVING 2-HOUR FIRE RESISTANT RATING
 - ⑥ INTERLOCK MOTORIZED DAMPER WITH HWHT-1 & HWHT-2.
- NOTES:**
1. PROVIDE 2" INSULATION FOR OAI DUCT, 1.5" INSULATION FOR SUPPLY AND RETURN AIR DUCT.
 2. OUTDOOR AIR INTAKE, EXHAUST OPENINGS, STAIRWAY AND SHAFT VENTS SHALL BE PROVIDED WITH CLASS I MOTORIZED DAMPERS. THE DAMPERS SHALL HAVE AN AIR LEAKAGE RATE NOT GREATER THAN 4 CFM/FT² OF DAMPER SURFACE AREA AT 1.0 INCH WATER GAUGE (249 PA) AND SHALL BE LABELED BY AN APPROVED AGENCY WHEN TESTED IN ACCORDANCE WITH AMCA 500D.
 3. DIESEL PIPING SHALL HAVE 4-INCH CLEARANCE FROM ALL PIPE OR PIPE COVERING AND REQUIRES DEDICATED SHAFT. SHAFT MATERIALS HAVING AT LEAST A 2-HOUR FIRE RESISTANT RATING.

DOB STAMP



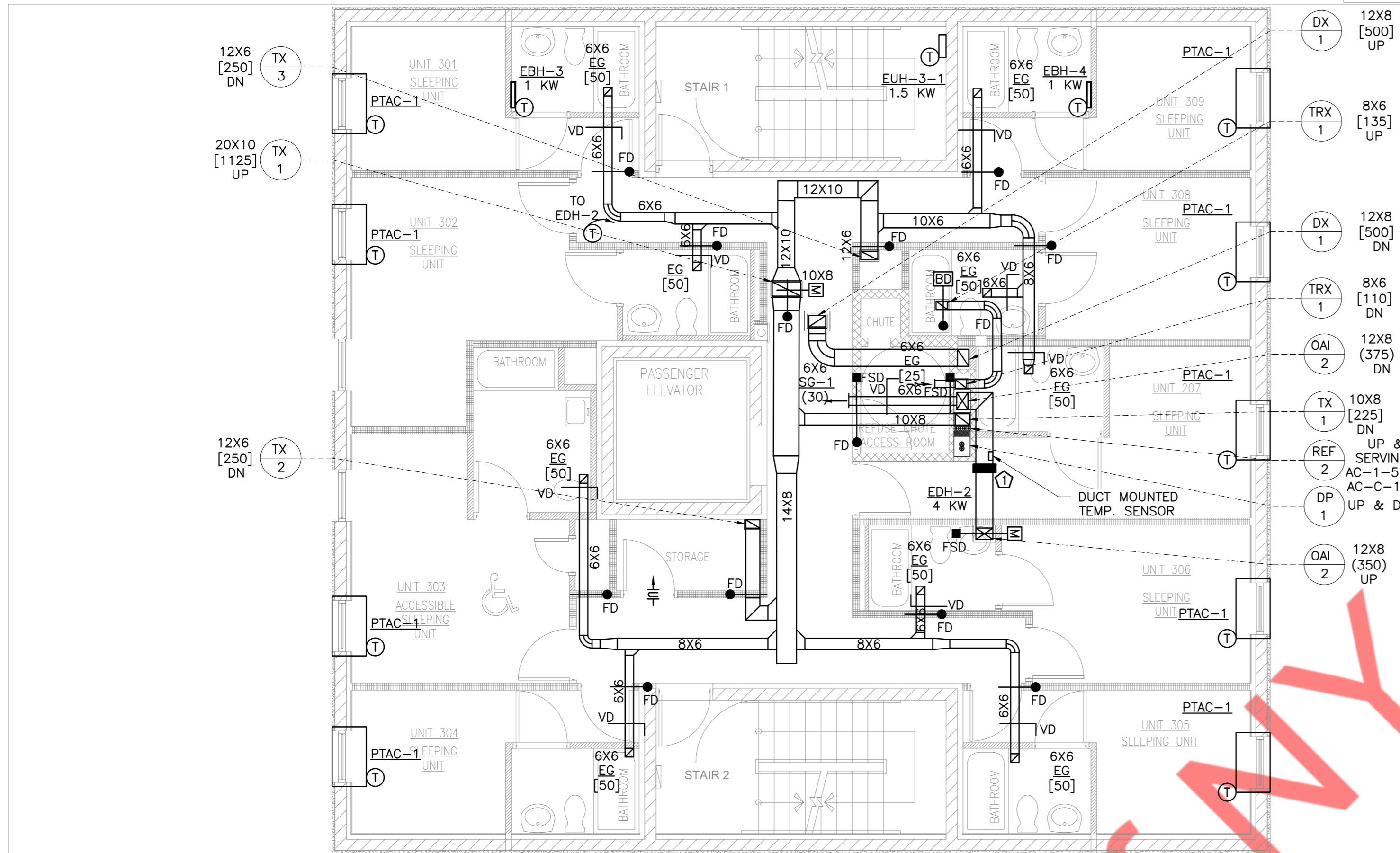
- (2) 4"Ø EXHAUST FLUE DN
- (2) 4"Ø COMBUSTION AIR INTAKE DN
- 4"Ø COMBUSTION AIR INTAKE SIDEWALL MINIMUM ABOVE 7 FEET FROM THE GRADE LEVEL 12" BELOW THE EXHAUST VENT WITH W.M.S. SCREEN
- 4"Ø VENT AT SIDEWALL MINIMUM ABOVE 7 FEET FROM THE GRADE LEVEL 12" ABOVE THE COMBUSTION AIR INTAKE WITH W.M.S. SCREEN
- SLEEVE
- 12X6 DN (GV 1)
- 12X8 [500] UP & DN (DX 1)
- 8X6 [85] UP & DN (TRX 1)
- 10X8 (315) UP & DN (OAI 2)
- 10X8 [225] UP & DN (TX 1)
- UP & DN SERVING TO AC-1-5, 1-6, AC-C-1, C-2 (REF 2)
- UP & DN (DP 1)
- FUEL FILLING TANK VENT
- MOTORIZED DAMPER SHALL BE INTERLOCKED WITH THE OAF-1 FAN
- 20X12 OUTSIDE AIR INTAKE LOUVER 10 FEET ABOVE GRADE LEVEL
- 14X8 (400) DN (OAI 1)

- SMOKE VENT WITH 3'X3' GOOSNECK VENT (MIN CLEAR AREA 7.3 SF) THROUGH ROOF IN 2 HR RATED ENCLOSURE.
- 14X12 (840) UP (OAI 3)
- PROVIDE ACCESS PANEL FOR EDH-3
- DUCT MOUNTED TEMP. SENSOR
- REF 1 FROM ABOVE SERVING TO AC-1-1 TO AC-1-4

- KEY NOTES:**
- 1 1/4" CD TO NEAREST FLOOR DRAIN W/ AIR GAP. COORDINATE W/ PLUMBING DRAWING.
 - 2 PROVIDE PERFORATED PLATE AT SIDEWALL 24" ABOVE GROUND LEVEL W/ FREE AREA NOT LESS THAN 30 SQ. INCHES.
- NOTES:**
1. PROVIDE 2" INSULATION FOR OAI DUCT, 1.5" INSULATION FOR SUPPLY AND RETURN AIR DUCT.
 2. OUTDOOR AIR INTAKE, EXHAUST OPENINGS, STAIRWAY AND SHAFT VENTS SHALL BE PROVIDED WITH CLASS 1 MOTORIZED DAMPERS. THE DAMPERS SHALL HAVE AN AIR LEAKAGE RATE NOT GREATER THAN 4 CFM/FT² OF DAMPER SURFACE AREA AT 1.0 INCH WATER GAUGE (249 PA) AND SHALL BE LABELED BY AN APPROVED AGENCY WHEN TESTED IN ACCORDANCE WITH AMCA 500D.
 3. DIESEL PIPING SHALL HAVE 4-INCH CLEARANCE FROM ALL PIPE OR PIPE COVERING AND REQUIRES DEDICATED SHAFT. SHAFT MATERIALS HAVING AT LEAST A 2-HOUR FIRE RESISTANT RATING.

1 FIRST FLOOR MECHANICAL PLAN
SCALE: 3/16" = 1'-0"

DOB STAMP



- DX 1 12X8 [500] UP
- TRX 1 8X6 [135] UP
- DX 1 12X8 [500] DN
- TRX 1 8X6 [110] DN
- OAI 2 12X8 (375) DN
- TX 1 10X8 [225] DN
- REF 2 UP & DN SERVING TO AC-1-5, 1-6, AC-C-1, C-2
- DP 1 UP & DN
- OAI 2 12X8 (350) UP

KEY NOTES:

CONTRACTOR TO PROVIDE ACCESS PANEL FOR EDH-2, FIRE RATING SHOULD MATCH WITH THE FIRE RATING OF CEILING.

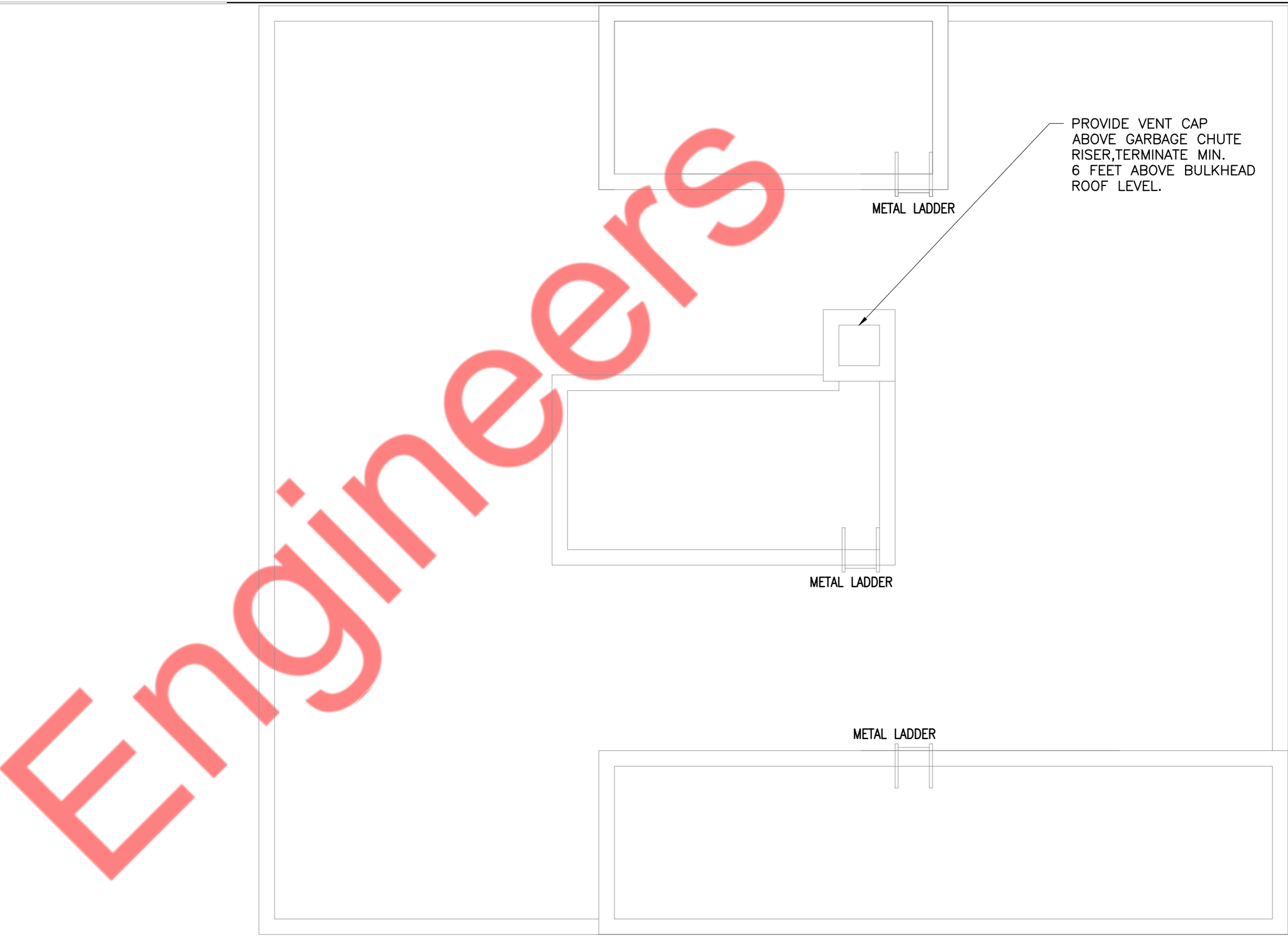
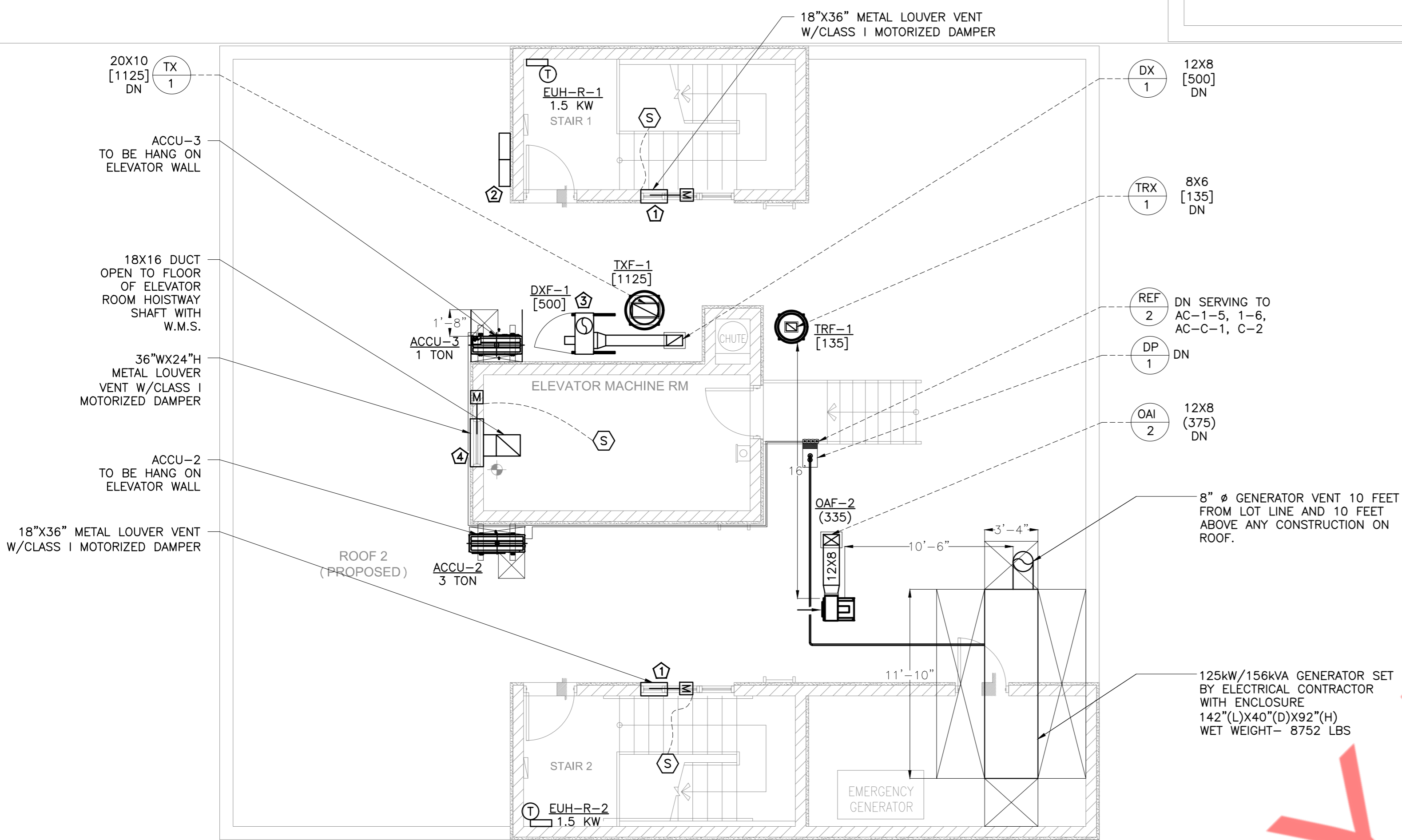
NOTES:

- OUTDOOR AIR INTAKE, EXHAUST OPENINGS, STAIRWAY AND SHAFT VENTS SHALL BE PROVIDED WITH CLASS 1 MOTORIZED DAMPERS. THE DAMPERS SHALL HAVE AN AIR LEAKAGE RATE NOT GREATER THAN 4 CFM/FT² OF DAMPER SURFACE AREA AT 1.0 INCH WATER GAUGE (249 PA) AND SHALL BE LABELED BY AN APPROVED AGENCY WHEN TESTED IN ACCORDANCE WITH AMCA 500D.
- PROVIDE 2" INSULATION FOR OAI DUCT.

1 THIRD FLOOR MECHANICAL PLAN
SCALE: 3/16" = 1'-0"

Property of NY Engineers

DOB STAMP



- NOTES:**
1. ALL EXHAUST FANS SHALL BE LOCATED MINIMUM 3 FEET FROM LOT LINE, ALL OUTDOOR AIR INTAKE FANS SHOULD BE 10 FEET FROM LOT LINE AND ANY EXHAUST.
 2. AIR CONDITIONER UNIT SHALL NOT PRODUCE NOISE LEVELS IN EXCESS OF 42 DECIBELS FOR A SINGLE AIR CIRCULATING DEVICE AND 45 DECIBELS FOR THE CUMULATIVE NOISE LEVEL OF MULTIPLE AIR CIRCULATING DEVICES AS MEASURED 3 FEET FROM THE NOISE SOURCE AT AN OPEN DOOR OR WINDOW OF A NEARBY RESIDENCE.
 3. PROVIDE WEATHER PROOF COATING FOR ALL EXTERIOR DUCTWORK AND PIPING.
 4. OUTDOOR AIR INTAKE, EXHAUST OPENINGS, STAIRWAY AND SHAFT VENTS SHALL BE PROVIDED WITH CLASS I MOTORIZED DAMPERS. THE DAMPERS SHALL HAVE AN AIR LEAKAGE RATE NOT GREATER THAN 4 CFM/FT² OF DAMPER SURFACE AREA AT 1.0 INCH WAER GAUGE (249 PA) AND SHALL BE LABELED BY AN APPROVED AGENCY WHEN TESTED IN ACCORDANCE WITH AMCA 500D.

- KEY NOTES:-**
- ① PROVIDE MIN. 3 S.F VENT WITH LOUVER/HATCH AT THE TOP OF ELEVATOR HOISTWAY ENCLOSURES. CONFIRM EXACT SIZE W/ ARCH. & ELEVATOR CONSULTANT. PROVIDE MOTORIZED DAMPER AT LOUVER/HATCH & CONNECT TO SMOKE DETECTOR ON TOP OF ELEVATOR SHAFT TO 100% FULLY OPEN WHEN SMOKE DETECTOR IS TRIGGERED.
 - ② FOR DRYER EXHAUST FAN (DX-1) ON ROOF, PROVIDE VARIABLE FREQUENCY DRIVE, MODULATING EXHAUST CONTROL AND PRESSURE TRANSDUCER (SEE DRAWING M-500.00 PLAN TO ALL CONFIGURATIONS) IN NEMA 3-R VENTILATED, WEATHERPROOF, ENCLOSURE. COORDINATE LOCATIONS WITH ARCHITECT.
 - ③ FOR DRYER EXHAUST DUCTWORK PROVIDE GOOSENECK AND TERMINATE MINIMUM 3 FEET ABOVE ROOF LEVEL AND 10 FEET AWAY OF ANY OUTSIDE AIR INTAKE OPENING AND 3 FEET AWAY OF LOT LINE.
 - ④ PROVIDE MIN 3.3 S.F VENT WITH LOUVER/HATCH AT THE TOP OF STAIRCASE ENCLOSURE. PROVIDE MOTORIZED DAMPER AT LOUVER/HATCH & CONNECT TO SMOKE DETECTOR ON TOP OF STAIRCASE ENCLOSURE TO 100% FULLY OPEN WHEN SMOKE DETECTOR IS TRIGGERED. NO OPENING SHALL BE LOCATED IN THE WALL WITHIN A DISTANCE OF 30 FEET VERTICALLY ABOVE VENT OPENING OR 5 FEET ON EITHER SIDE OF THE VENT OPENING.

1 ROOF MECHANICAL PLAN
SCALE: 3/16" = 1'-0"

2 BULKHEAD MECHANICAL PLAN
SCALE: 3/16" = 1'-0"

DOB STAMP