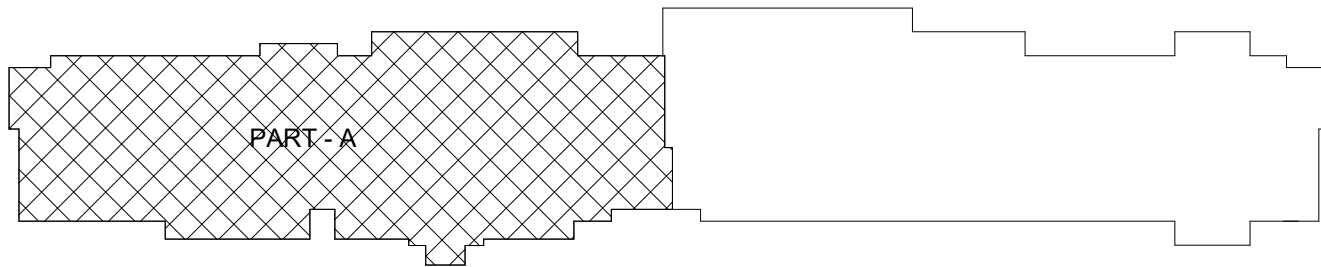
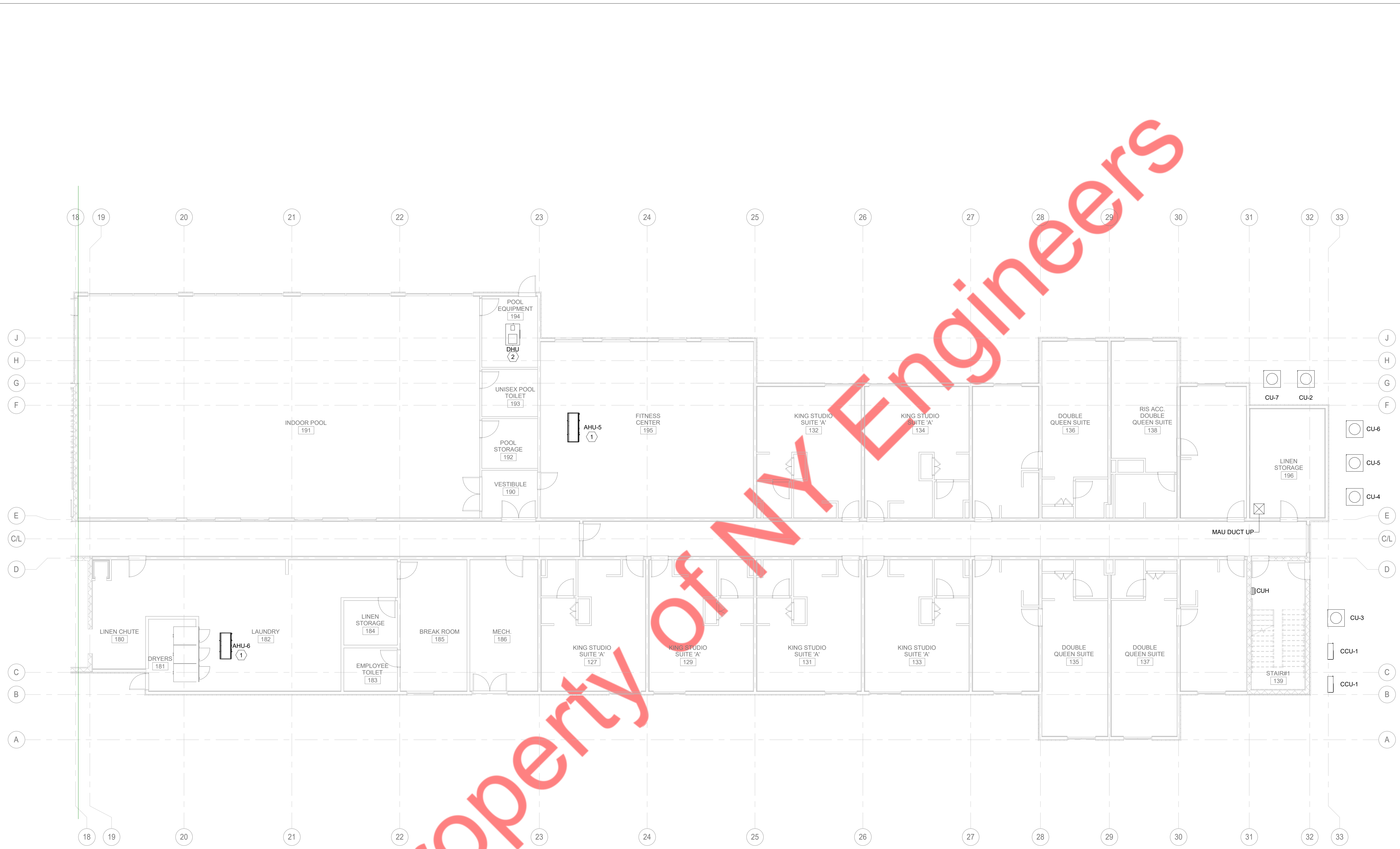


① 1ST FLOOR MECHANICAL PLAN - A
1/8" = 1'-0"

KEY NOTE-201.1	
SYMBOL	TEXT
1	FLOOR MOUNTED AHU (UNIT LOCATION IS APPROXIMATE)
2	CEILING SUSPENDED AHU (UNIT LOCATION IS APPROXIMATE)

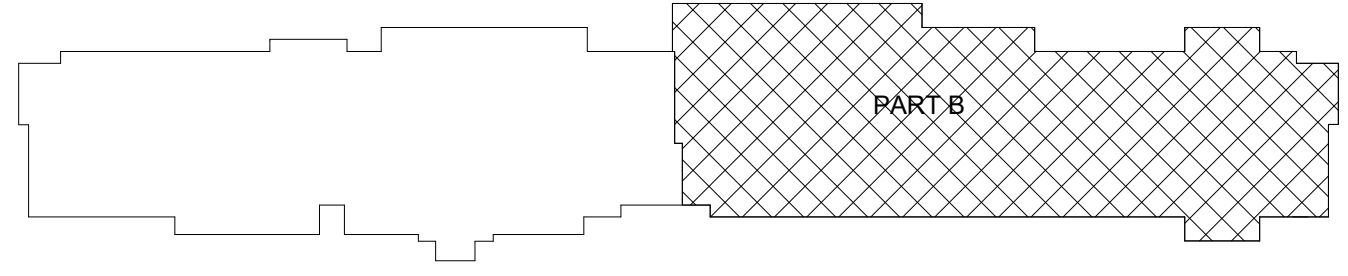


KEY PLAN- PART A



1 1ST FLOOR MECHANICAL PLAN -B
1/8" = 1'-0"

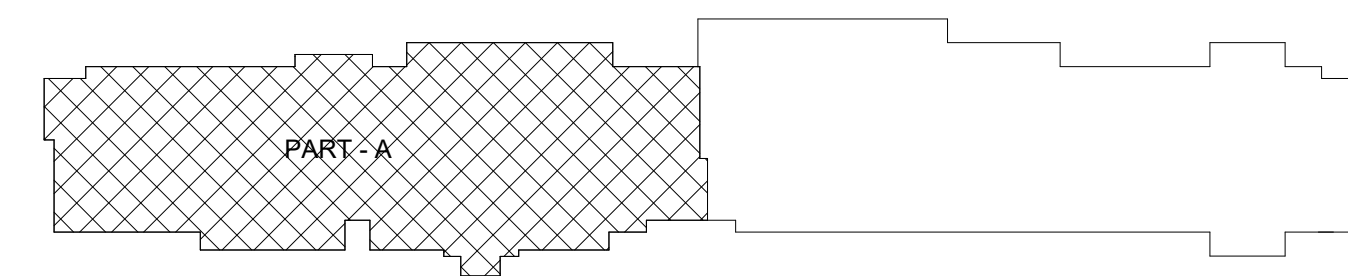
KEY NOTE-201.2	
SYMBOL	TEXT
1	CEILING SUSPENDED AHU (UNIT LOCATION IS APPROXIMATE)
2	FLOOR MOUNTED DHU (UNIT LOCATION IS APPROXIMATE)



IN PROGRESS

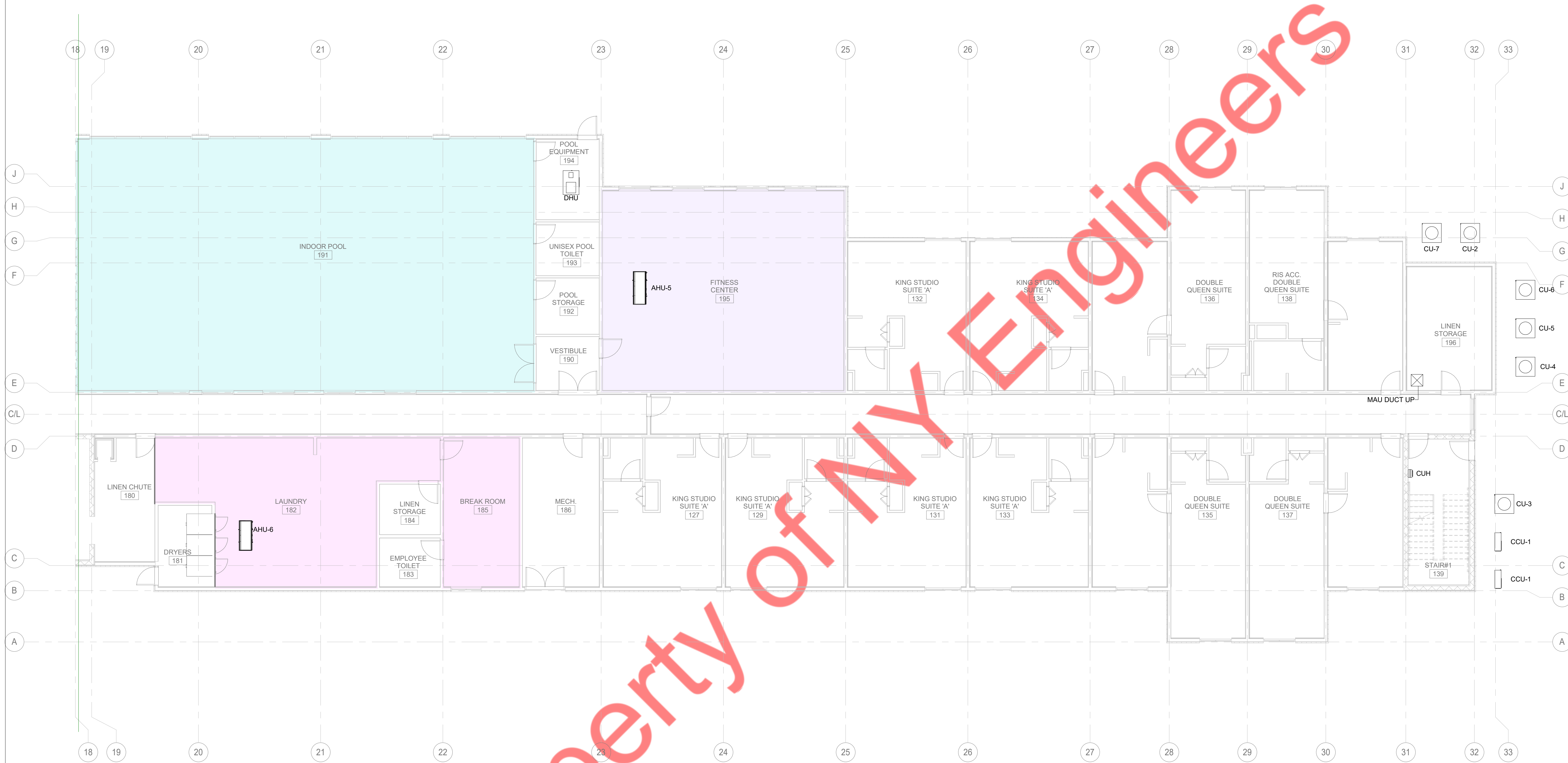


① 1ST FLOOR MECHANICAL PLAN- HVAC ZONE A
1/8" = 1'-0"

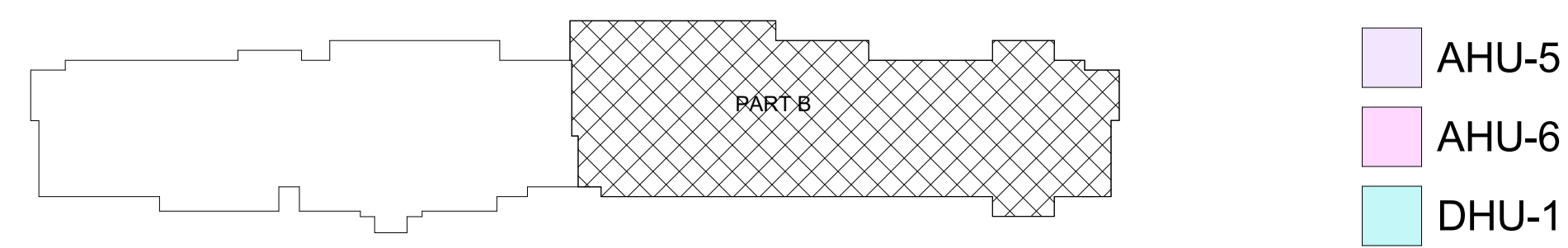


KEY PLAN- PART A

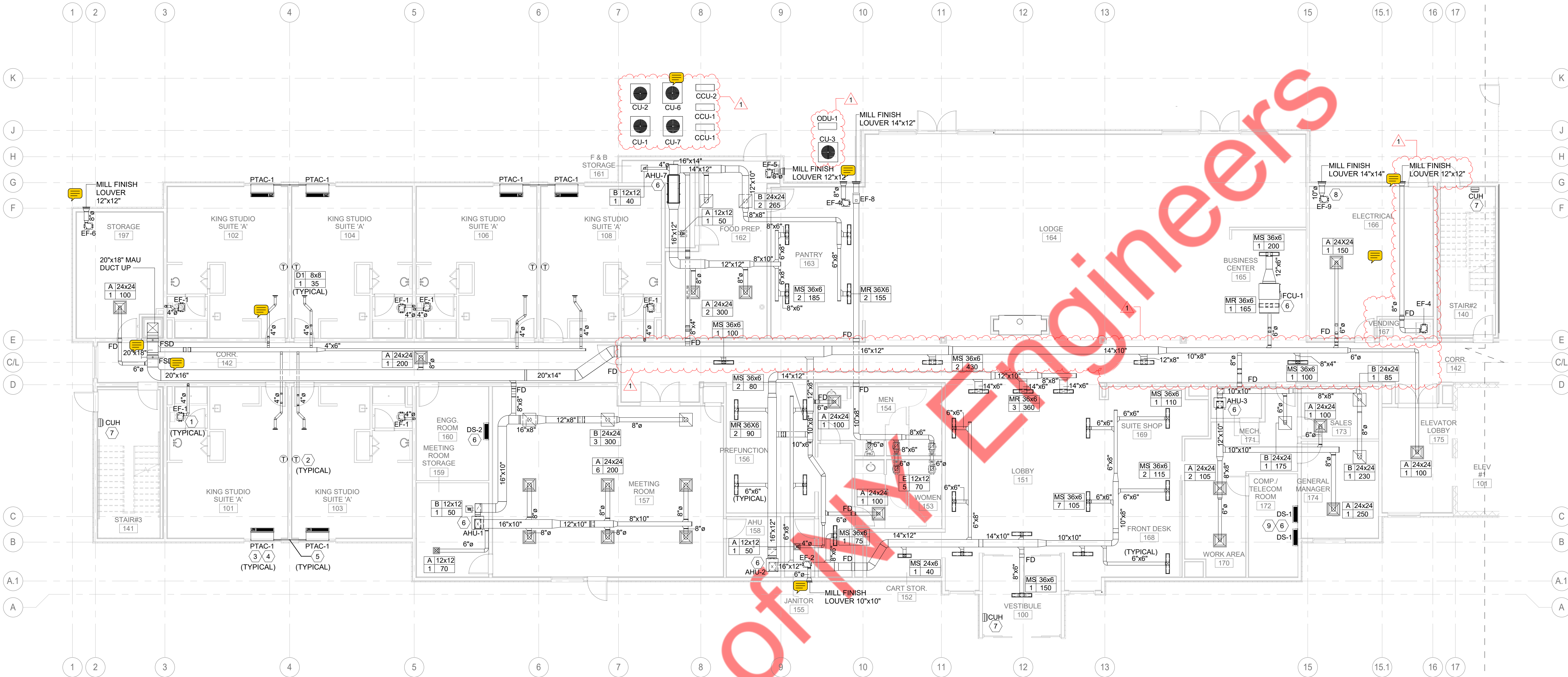
- AHU-1
- AHU-2
- AHU-3
- AHU-4
- AHU-7
- DS-1



① 1ST FLOOR MECHANICAL PLAN- HVAC ZONE B
1/8" = 1'-0"



IN PROGRESS



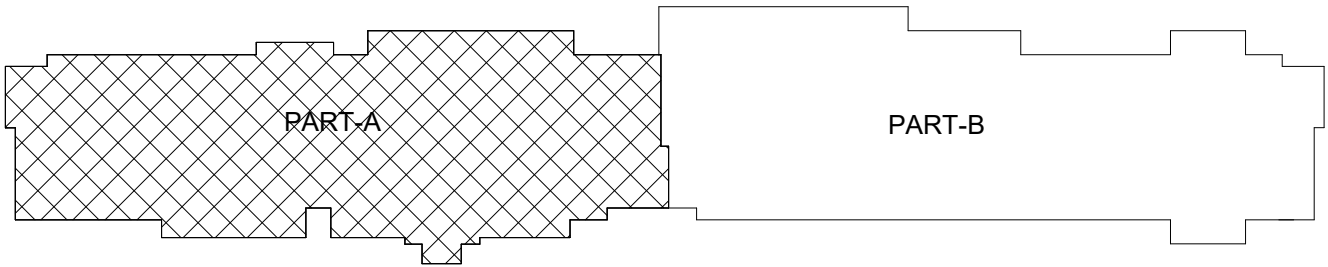
① 1ST FLOOR MECHANICAL PLAN - A
1/8" = 1'-0"

GENERAL MECHANICAL NOTES

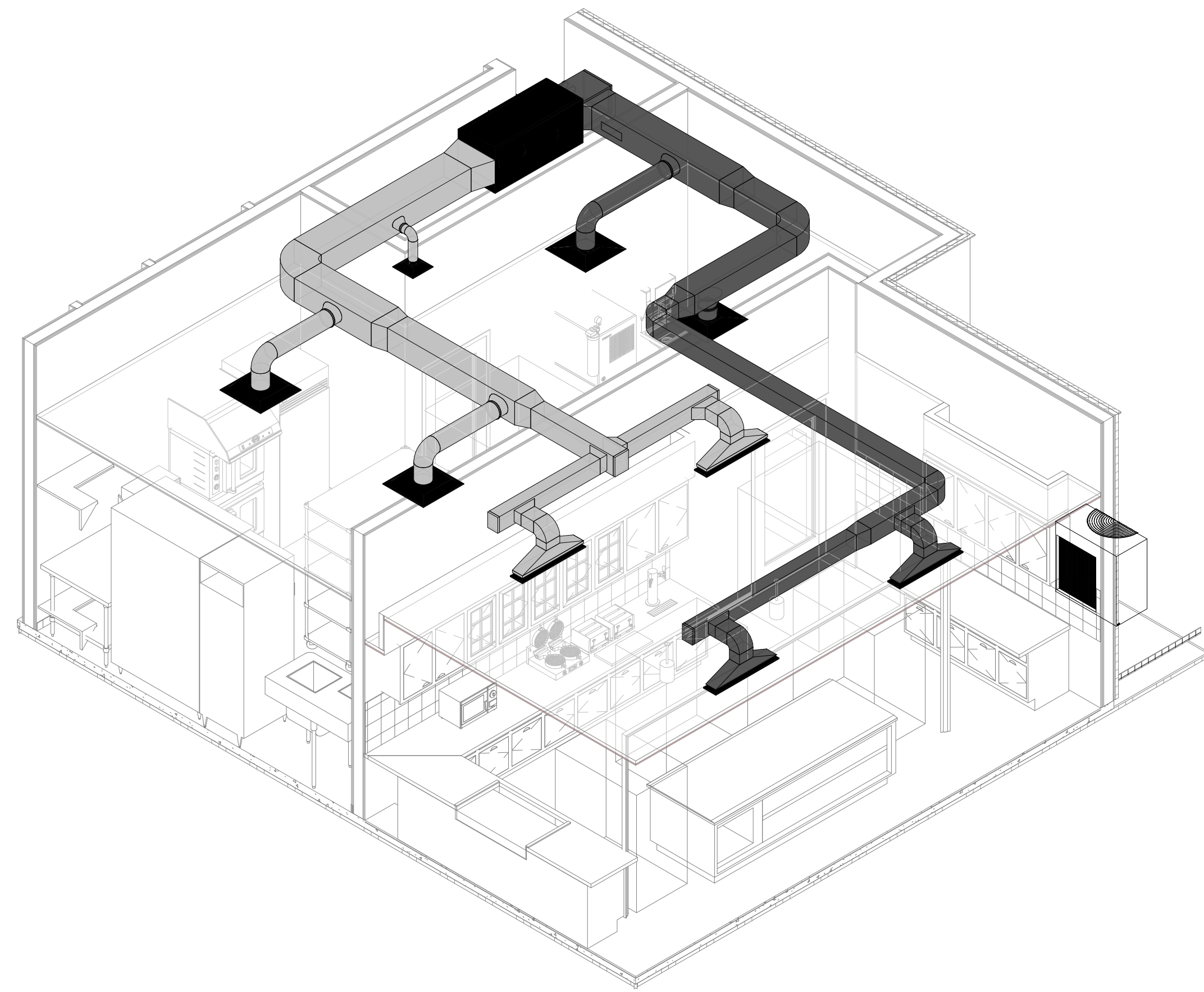
1	CONDENSING UNITS TO BE MOUNTED AND LEVELED ON PRE - FABRICATED CONCRETE PADS.	14	PROVIDE GUEST ROOM THERMOSTAT WITH TWO SPEED FAN CONTROL CAPABILITY.
2	SUPPLY RUNOUTS TO DIFFUSERS SHALL BE THE SAME SIZE AS THE EQUIPMENT CONNECTION UNLESS OTHERWISE NOTED.	15	THE FIRST TEN FEET OF THE RETURN AND SUPPLY DUCT OF AIR HANDLING UNITS AND FAN COIL UNITS SHALL HAVE 1" INTERNAL LINING. DIMENSIONS SHOWN ARE CLEAR INSIDE.
3	REFER TO MANUFACTURER'S RECOMMENDATIONS FOR REFRIGERANT PIPE SIZING.	16	EXTERIOR DUCTS SHALL BE WRAPPED WITH POLYGUARD (ALUMAGUARD) SELF-ADHESIVE SELF-HEALING MEMBRANE WITH WATERSHED DESIGN OR EQUAL.
4	THERMOSTATS FOR ALL PTAC AND DX SYSTEMS SHALL BE MANUFACTURERS STANDARD WIRED T-STATS. THERMOSTAT BOX TO BE HORIZONTAL. IN PUBLIC SPACES PLACE IN AREAS NOT ACCESSIBLE TO GUESTS. CONTRACTOR SHALL PROVIDE ADDITIONAL BID LINE ITEM FOR INNCOMM OR VERDANT AND SCHNEIDER (FOR SCHNEIDER CONTACT CHRIS HINTON AT 407-346-8827).	17	CONTRACTOR SHALL PROVIDE ALUMINUM DUCTS WITHOUT INSULATION FOR POOL AREA.
5	ALL THERMOSTAT SHALL HAVE A 5°F DEADBAND WITH AUTOMATIC CONTROLS CAPABLE OF SETBACK TO 55°F (HEAT) & 85°F (COOL).	18	PROVIDE RADIANT DAMPERS AND RATED DIFFUSERS/GRILLES ON THE TERMINALS INSTALLED IN RATED ASSEMBLIES.
6	PAINT INSIDE OF ALL RETURN GRILLES BLACK.	19	PAINT ALL EXTERIOR GRILLES/LOUVERS TO MATCH BUILDING COLOR.
7	ELECTRICAL CONTRACTOR SHOULD WIRE THE DUCT MOUNTED SMOKE DAMPER. MECHANICAL CONTRACTOR TO COORDINATE WITH ELECTRICAL CONTRACTOR.	20	EACH GUESTROOM EXHAUST WILL HAVE INDIVIDUAL 4" ROUND DUCT TILL ROOF. SEE IMC SECTION 607.6.1
8	4" OUTSIDE AIR DUCT TO GUESTROOMS TO BE 26 GAUGE (0.55 MM) STEEL IN THICKNESS.	21	4" EXHAUST AIR DUCT FROM GUESTROOM TOILET TO BE 26 GAUGE (0.55 MM) STEEL IN THICKNESS.
9	ALL THERMOSTATS IN GUEST COMMON AREAS SHALL INCLUDE LOCKABLE CLEAR PLASTIC THERMOSTAT GUARD.	22	CONTRACTOR SHALL PROVIDE OWNER WITH A CREDIT LINE ITEM IF FIBREGLASS INSULATION IS USED INSTEAD OF ELASTOMETRIC.
10	MECHANICAL CONTRACTOR SHALL REVIEW LOCAL BUILDING CODE AND STATE STATUTES FOR PLACEMENT OF CO SENSORS AND COORDINATE WITH EOR IF THERE ARE ANY DISCREPENCIES SHOWN ON PLAN.	23	CONTRACTOR SHALL PROVIDE VOLUME CONTROL DAMPER ON ALL BRANCHES. CONTRACTOR SHALL USE CABLE OPERATED DAMPERS IN HARD CEILING WHERE ACCESS PANELS ARE NOT AVAILABLE.
11	COMBINATION OF CO/SMOKE DETECTORS WILL BE USED AT ALL SMOKE DETECTOR LOCATION. REFER ELECTRICAL DRAWING FOR CO/SMOKE DETECTOR LOCATION.	24	THE FRANCHISE BRAND STANDARDS DESIGN DOCUMENT SHALL BE CONSIDER AS AN INTEGRAL PART OF THE CONSTRUCTION DOCUMENTS. ALL CONTRACTORS SHALL ENSURE THEY OBTAIN, READ, AND FAMILIARIZE THEMSELVES WITH THE BRAND STANDARD DOCUMENT BEFORE BIDDING AND ALSO THROUGHOUT THE CONSTRUCTION STAGES. IF THERE ARE ANY DISCREPANCIES BETWEEN THE CONSTRUCTION DOCUMENTS AND THE FRANCHISE BRAND STANDARDS, THE CONTRACTOR SHALL ISSUE AN RFI TO THE AOR AND EOR.
12	CONTRACTOR CAN USE DETAIL NO. 6 ON SHEET M-101 AND DETAIL NO. 16 ON SHEET M-102 TO ELIMINATE FIRE DAMPERS IN RATED WALLS/SHAFTS. CONTRACTOR TO CONFIRM WITH OWNER.		
13	ALL DUCTS LOCATED IN UNCONDITIONED SPACES MUST HAVE INSULATION. SUPPLY AIR DUCTS FOR SPLIT SYSTEMS, DELIVERING COLD AIR, MUST HAVE INSULATION. OUTSIDE AIR DUCTS, DELIVERING NEUTRAL AIR, LOCATED IN CONDITIONED SPACES ARE NOT REQUIRED TO HAVE INSULATION, BUT CONTRACTOR SHALL CONFIRM WITH OWNER. EXHAUST DUCTS SHALL NOT BE INSULATED.		

KEY NOTE-201.A

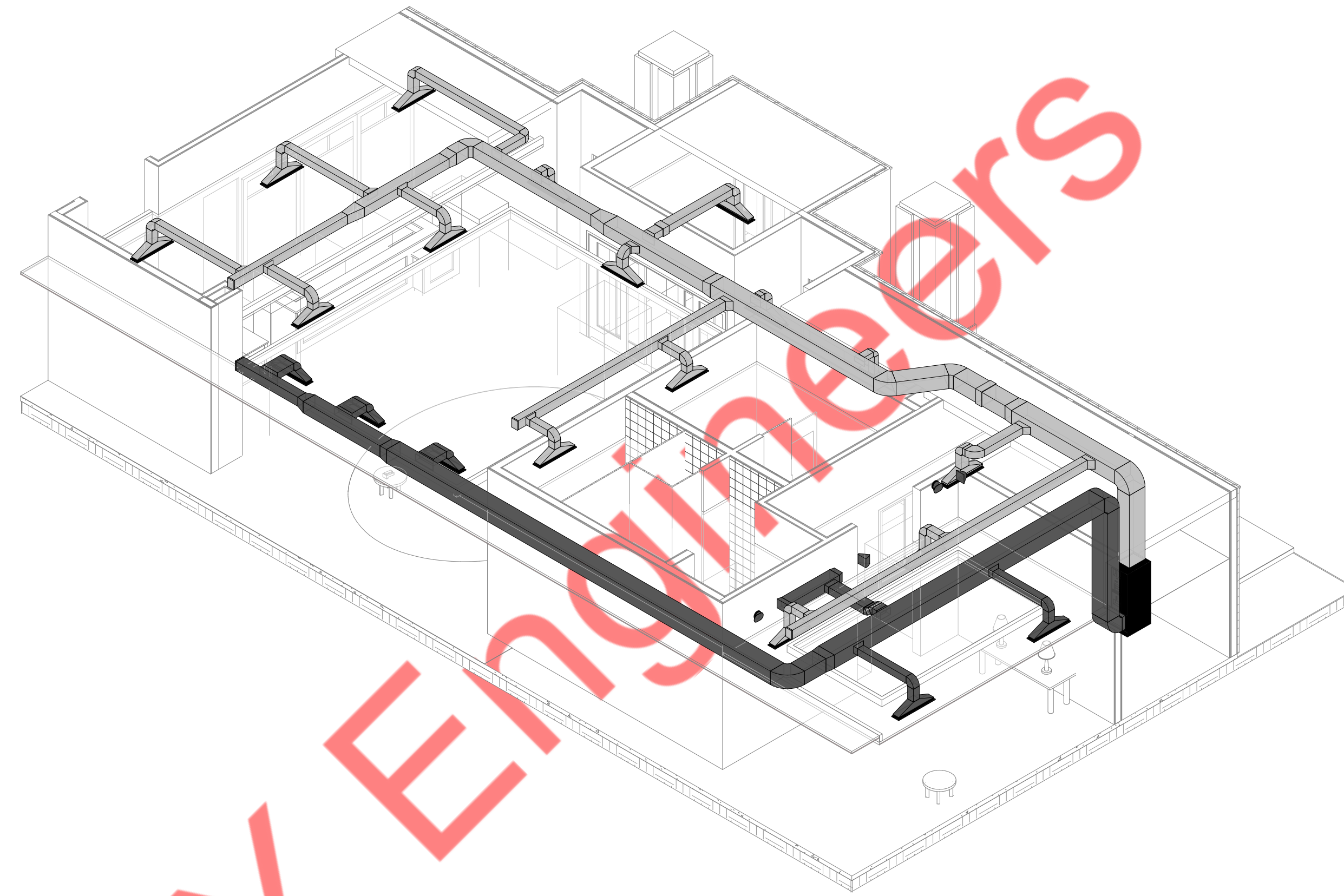
TEXT
1 FAN TO RUN CONTINUOUSLY AT THE RATE OF 35 CFM AND RAMP UP TO 50 CFM WHEN WALL SWITCHES TURNED ON.
2 MECHANICAL CONTRACTOR TO COORDINATE T-STAT LOCATION AS PER ID.
3 NO OUTDOOR AIR SHALL BE BROUGHT INTO ROOM THROUGH PTAC UNITS. FRESH AIR CONTROL ARM TO BE CLOSED. TYPICAL FOR ALL PTAC UNITS.
4 ELBOW CONDENSATE DRAIN CONNECT TO NEAREST CONDENSATE RISER. TYPICAL FOR ALL PTAC UNITS UNLESS NOTED OTHERWISE.
5 ALL CONDENSATE DRAINS TO BE CONNECT INDIRECTLY TO STORM LINE. GC TO ENSURE A MIN. SLOPE OF 1/8" PER FT IS MAINTAINED. TYPICAL FOR ALL CONDENSATE RISER DOWN. 3/4" CONDENSATE RISER UP. SEE UPPER FLOOR PLANS FOR CONTINUATION. TYPICAL FOR ALL PTAC UNITS CONDENSATE DRAINAGE UNLESS NOTED OTHERWISE.
6 CONNECT AHU/FCU/DS UNIT CONDENSATES INDIRECTLY TO STORM LINE.
7 OPTIONAL CABINET UNIT HEATER, OWNER TO DECIDE IF CUH'S ARE REQUIRED.
8 WALL MOUNTED THERMOSTAT TO CONTROL EXHAUST FAN SET TO ENGAGE 80°F.
REDUNDANT UNIT FOR COMP./TELECOM ROOM. OWNER TO CONFIRM.



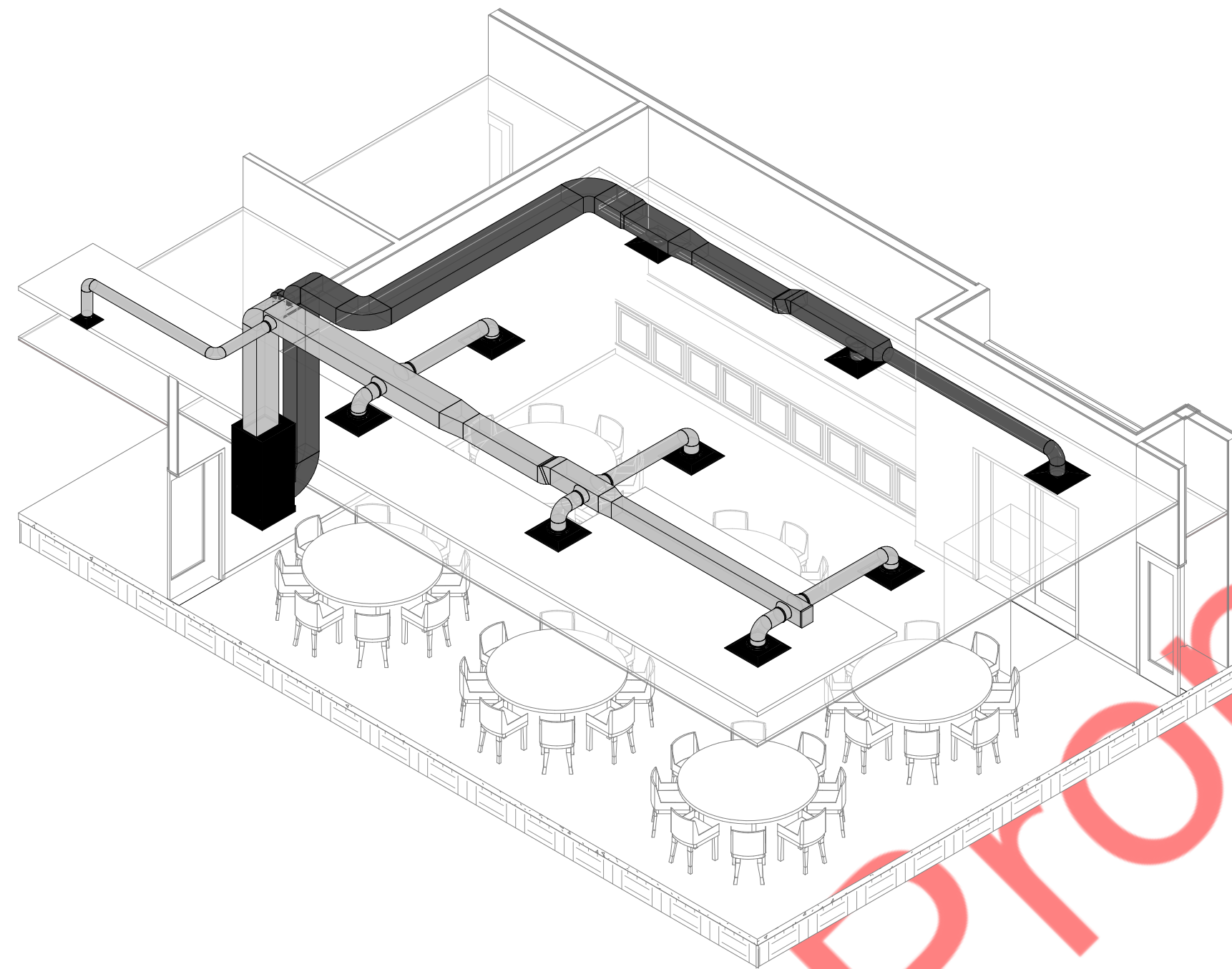
KEY PLAN



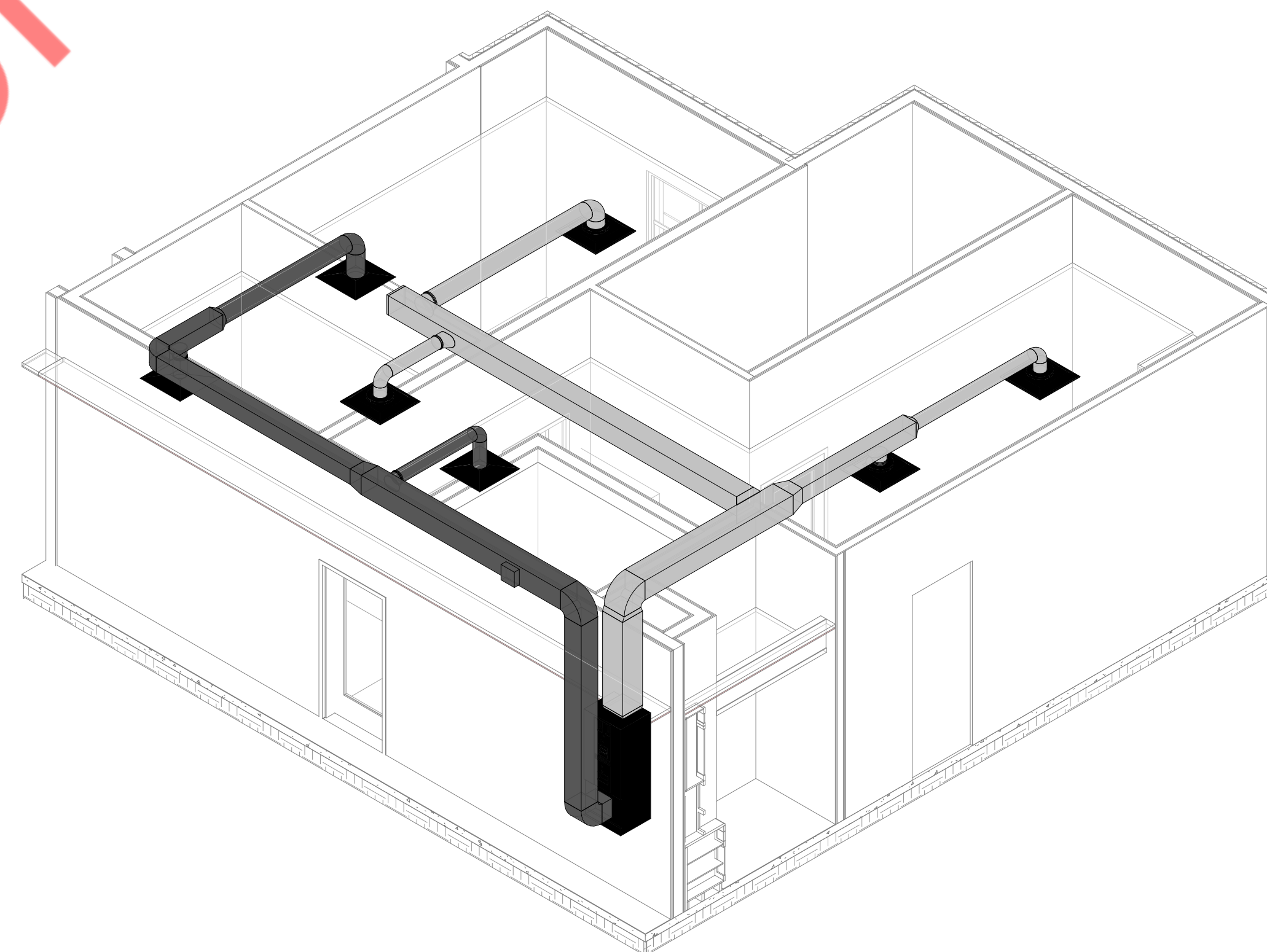
① FOOD PREP & PANTRY 3D VIEW
NTS



② PRE-FUNCTION, LOBBY, FRONT DESK 3D VIEW
NTS



③ MEETING ROOM 3D VIEW
NTS

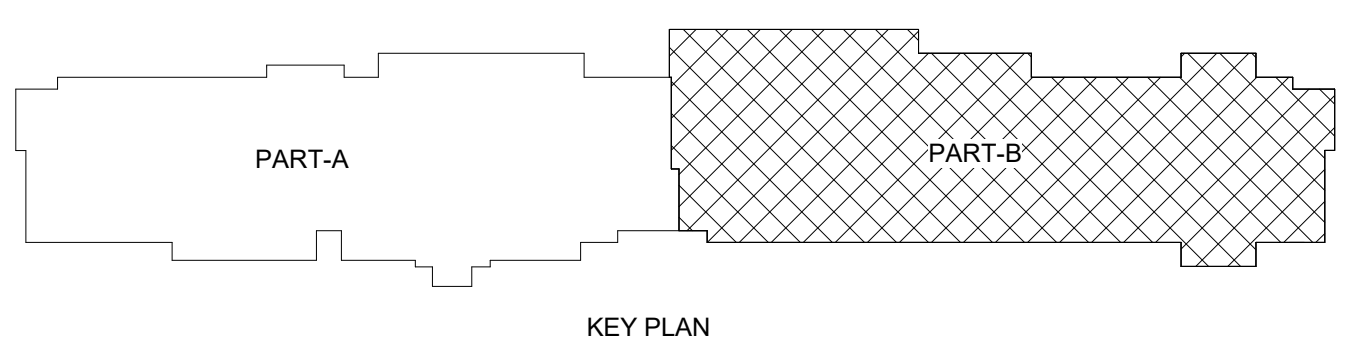


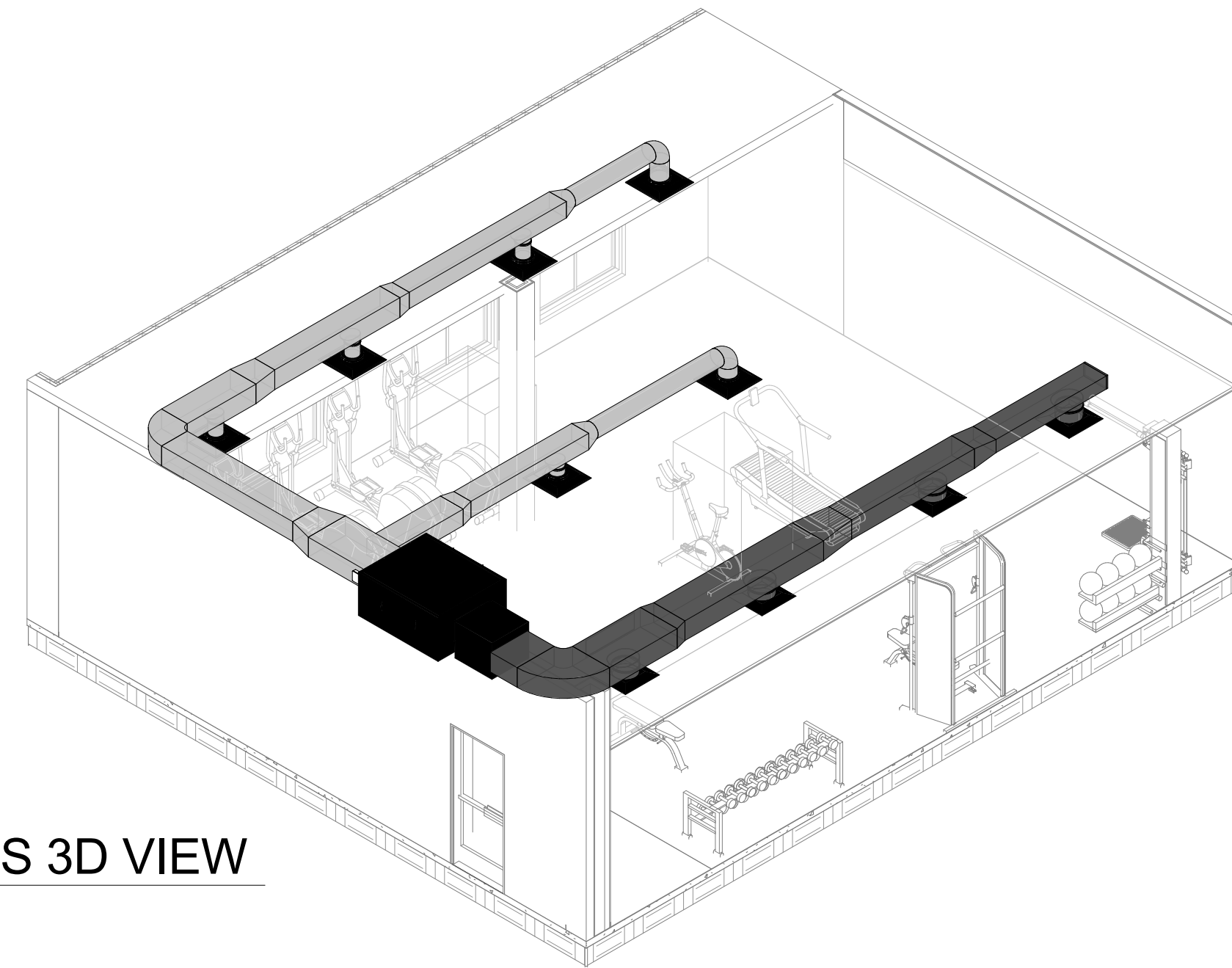
④ WORK AREA, GENERAL MANAGER, SALES 3D VIEW
NTS



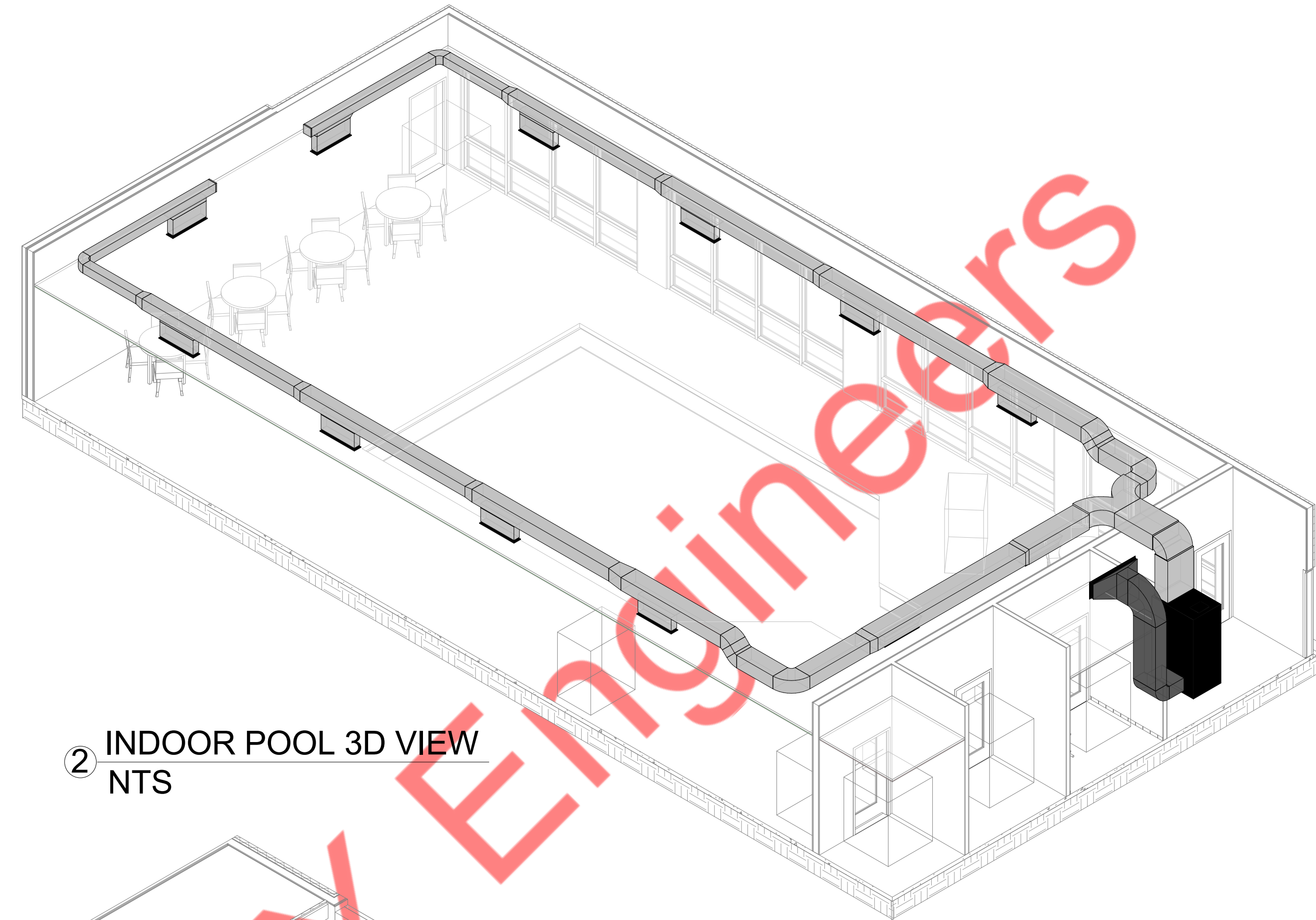
1 1ST FLOOR MECHANICAL PLAN-B
1/8" = 1'-0"

#	TEXT
1	FAN TO RUN CONTINUOUSLY AT THE RATE OF 35 CFM AND RAMP UP TO 50 CFM WHEN WALL SWITCHES TURNED ON.
2	MECHANICAL CONTRACTOR TO COORDINATE T-STAT LOCATION AS PER ID.
3	NO OUTDOOR AIR SHALL BE BROUGHT INTO ROOM THROUGH PTAC UNITS. FRESH AIR CONTROL ARM TO BE CLOSED. TYPICAL FOR ALL PTAC UNITS.
4	ELBOW CONDENSATE DRAIN CONNECT TO NEAREST CONDENSATE RISER. TYPICAL FOR ALL PTAC UNITS UNLESS NOTED OTHERWISE.
5	ALL CONDENSATE DRAINS TO BE CONNECT INDIRECTLY TO STORM LINE. GC TO ENSURE A MIN. SLOPE OF 1/8" PER FT IS MAINTAINED. TYPICAL FOR ALL CONDENSATE RISER DOWN. 3/4" CONDENSATE RISER UP. SEE UPPER FLOOR PLANS FOR CONTINUATION. TYPICAL FOR ALL PTAC UNITS CONDENSATE DRAINAGE UNLESS NOTED OTHERWISE.
6	CONNECT AHU/DHU UNIT CONDENSATES INDIRECTLY TO STORM LINE.
7	WALL MOUNTED THERMOSTAT TO CONTROL EXHAUST FAN SET TO ENGAGE 80°F.
8	OPTIONAL ELECTRIC UNIT HEATER FOR LAUNDRY COMBUSTION AIR. CONTRACTOR TO CONFIRM WITH THE OWNER.
9	DRYER EXHAUST FOR LAUNDRY. COORDINATE SIZE(S) & LOCATION(S) WITH ACTUAL EQUIPMENT PLAN.
10	MOD FOR OUTSIDE AIR, RETURN AIR & RELIEF AIR SHALL BE INTERLOCKED WITH ECONOMIZER OPERATION. PROVIDE CLASS 1 RATED MOD.
11	22x22 COMBUSTION AIR INTAKE LOUVER WITH BIRD SCREEN AND MOD. REFER DETAIL NO 13 ON SHEET M-102.
12	MECHANICAL CONTRACTOR TO PROVIDE MANUFACTURER'S COMMON VENTING KIT.
13	OPTIONAL CABINET UNIT HEATER. OWNER TO DECIDE IF CUH'S ARE REQUIRED.
14	OUTSIDE AIR DAMPER SHALL BE CLOSED DURING NON ECONOMIZER MODE.
15	AHU TO BE PROVIDED WITH MICROMETAL ECONOMIZER WITH DIFFERENTIAL DRY BULB CONTROLS. FIELD INSTALLED BY CONTRACTOR.
16	POOL EXHAUST FAN EF-11A IS RUN CONTINUOUSLY AND EF-11B IS TO BE SWITCHED IN POOL EQUIPMENT ROOM AND RUN UNDER EMERGENCY OR UNUSUAL CONDITIONS.

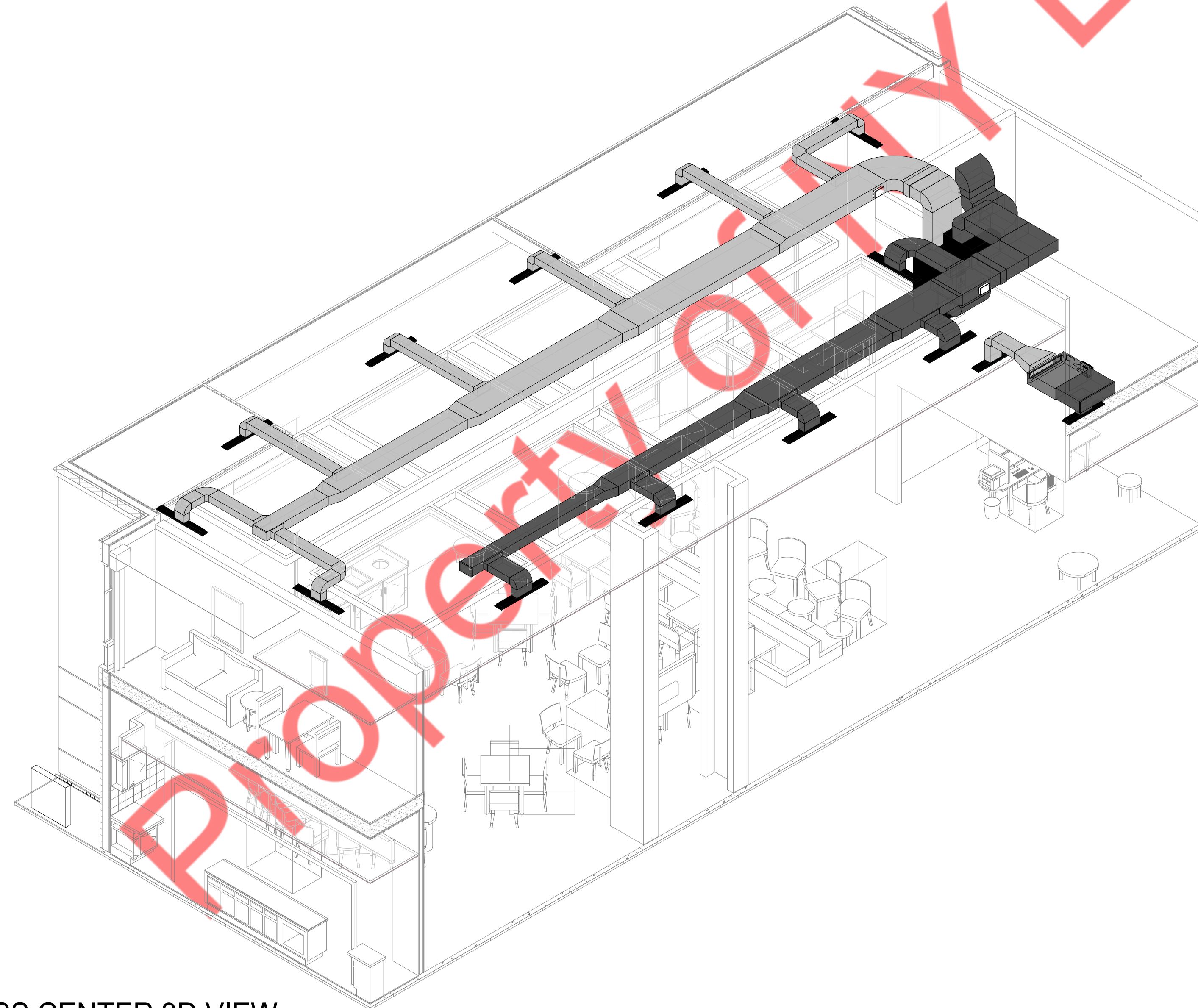




① FITNESS 3D VIEW
NTS



② INDOOR POOL 3D VIEW
NTS



③ LODGE, BUSINESS CENTER 3D VIEW
NTS