

MATCH LINE A-A SEE DRAWING FSP 5 OF 11

**FIRST FLOOR FIRE WEST SPRINKLER PLAN**

SCALE: 1/8" = 1'-0"  
 \* LIGHT HAZARD OCCUPANCY UNLESS OTHERWISE NOTED \*  
 \* 16 X 20 SQ. FT. MAXIMUM PROTECTION AREA FOR HOTEL UNITS  
 \* 14 X 18 SQ. FT. MAXIMUM PROTECTION AREA FOR HALLWAYS  
 \* CONTRACTOR'S CONTRACT STARTS 5 FEET OUTSIDE BUILDING AT FLANGE \*  
 \* ALL UNDERGROUND PIPING SHOWN FOR REFERENCE ONLY NOT IN CONTRACT \*

**SCOPE OF WORK:**  
 T1 WOOD CONSTRUCTION  
 WET SYSTEM ON THE FIRST THROUGH FOURTH FLOORS

**FIRE SPRINKLER NOTES:**  
 SYSTEM DESIGNED AS PER NFPA #13 2013 EDITION

11) TOTAL SPRINKLER HEADS W/ DEFLECTORS @ 1"-1 1/2" FROM BOTTOM OF CEILING/ DECK & PARALLEL FOR PENDANTS, AND 4"-6" FOR SIDEWALLS  
 16,400 SQ. FT. TOTAL AREA PROTECTED ON FIRST FLOOR

**CONTRACTOR SHALL:**  
 PROVIDE REQUIRED SIGNS & FLUSHING CONNECTIONS  
 CONTRACTORS MATERIAL AND TEST CERTIFICATES FOR ABOVE GROUND AND UNDERGROUND  
 PIPE SHALL BE SUBMITTED TO THE FIRE MARSHALL PRIOR TO APPROVAL OF THE INSTALLATION

**PIPE MATERIAL:**  
 1" - 1 1/4" SCHEDULE 40 THREADED BLACK STEEL W/ THREADED CAST IRON FITTINGS  
 WET SYSTEM BLACK STEEL PIPE, DRY SYSTEM TO BE GALVANIZED  
 2"-6" SCHEDULE 10 GROOVED BLACK STEEL W/ GROOVED FITTINGS W/ WELDED OUTLETS  
 1" TO 2" BLAZEMASTER CPVC PIPE & FITTINGS  
 ALL DIMENSIONS & ELEVATIONS ARE CENTERLINE OF PIPE & STEEL UNLESS NOTED OTHERWISE  
 CONTRACTOR TO VERIFY  
 ALL PIPE LENGTHS SHOWN ARE CENTER TO CENTERS

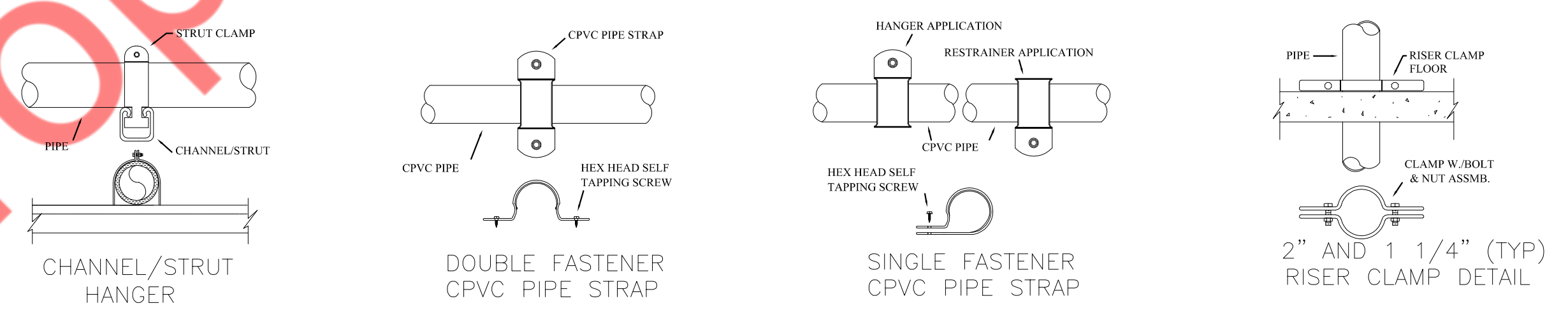
Calculation results for Design Area 6 - First Floor King Suite

This system as shown on **Bridal Construction** company print no. \_\_\_\_\_ dated **April 16, 2019** for **Homewood Suites by Hilton** at **100 Parsonage Road** contract no. **18-4938** is designed to discharge at a rate of **0.1** gpm/ft<sup>2</sup> (L/min/m<sup>2</sup>) of floor area over a maximum area of **624** ft<sup>2</sup> when supplied with water at a rate of **231.5** gpm at **45.4** psi at the base of the riser. Hose stream allowance of \_\_\_\_\_ is included in the above.

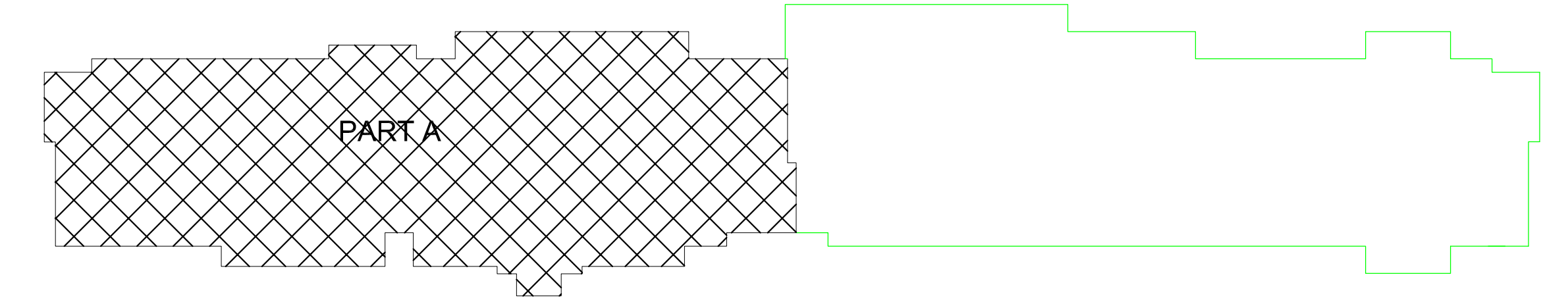
Occupancy classification: Residential	Number of heads flowing: 4
Commodity classification: _____	System Type: Wet
Maximum storage height: _____	Maximum velocity: 44.3 ft/s
Storage arrangement: _____	

Flow from In-Rack sprinklers:	0 gpm	Pressure Required at Source:	45.4 psi
Flow from Overhead sprinklers:	131.5 gpm	Pressure Available at Source:	105.0 psi
Flow from Inside Hoses:	0 gpm	Surplus Pressure at Source:	10.4 psi
Flow from Outside Hoses:	100 gpm		
Other fixed flows:	0 gpm		
Total flow in system piping:	231.5 gpm		
Additional flow at/beyond source:	0 gpm		
Total of all flows:	231.5 gpm		

SPRINKLER LEGEND	
—	WET CPVC SPRINKLER PIPE
- - -	STEEL SPRINKLER PIPE
----	STEEL STANDPIPE
○	HYDRAULIC NODE
○	SPRINKLER RISER/DROP NIPPLE
—	HANGER (SEE DETAIL SHEET 2)
⊠	FIRE DEPARTMENT CONNECTION

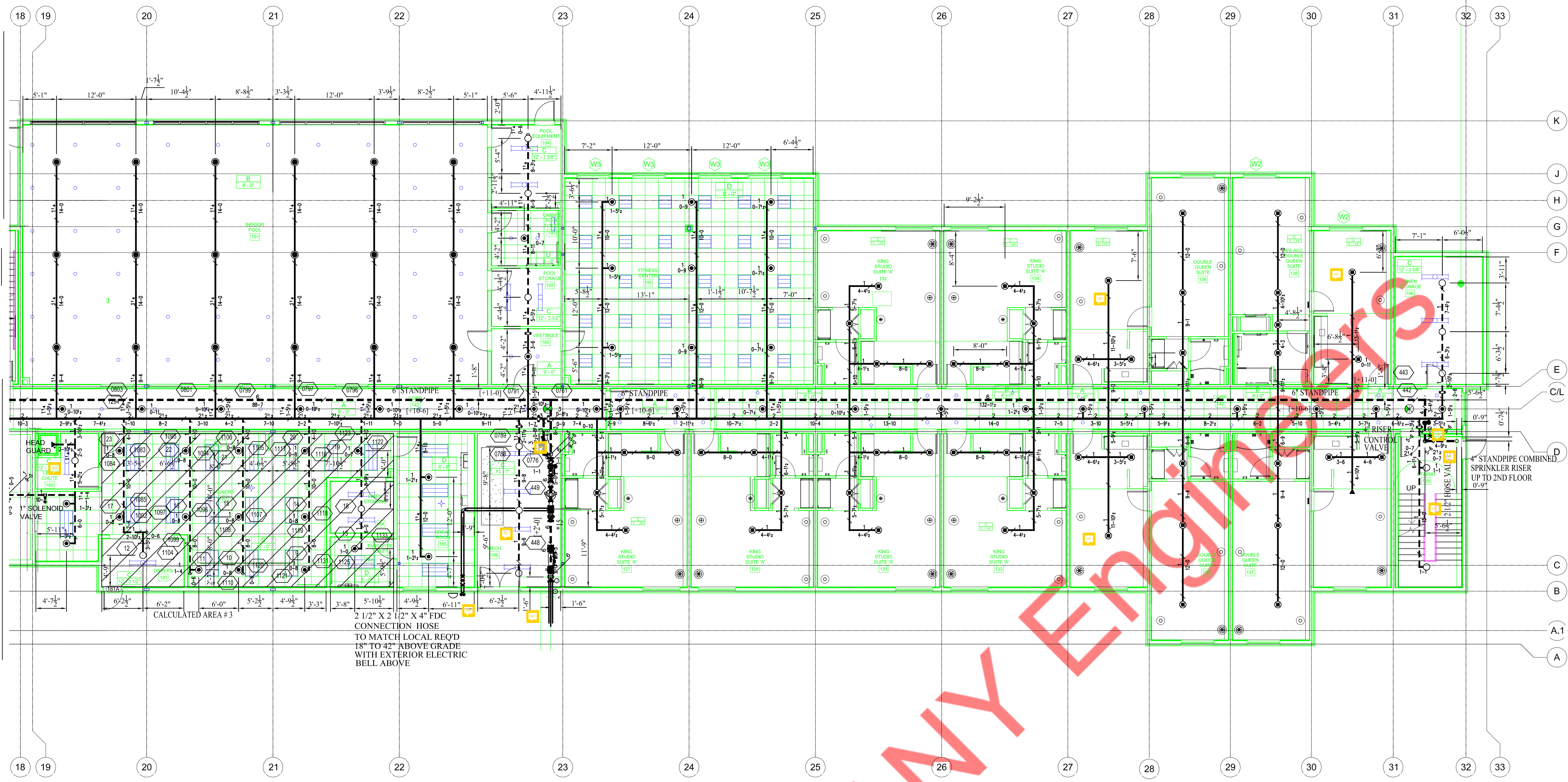


(CPVC) HANGER DETAILS  
 NOT TO SCALE





MATCH LINE A-A SEE DRAWING FSP 4 OF 11



SPRINKLER LEGEND	
	WET CPVC SPRINKLER PIPE
	STEEL SPRINKLER PIPE
	STEEL STANDPIPE
	HYDRAULIC NODE
	SPRINKLER RISER/DROP NIPPLE
	HANGER (SEE DETAIL SHEET 2)
	FIRE DEPARTMENT CONNECTION

**FIRST FLOOR FIRE EAST SPRINKLER PLAN**

SCALE 1/8"=1'-0"  
 \* LIGHT HAZARD OCCUPANCY UNLESS OTHERWISE NOTED \*  
 \* 16 X 20 SQ. FT. MAXIMUM PROTECTION AREA FOR HOTEL UNITS  
 \* 14 X 14 SQ. FT. MAXIMUM PROTECTION AREA FOR HALLWAYS  
 \* CONTRACTOR'S CONTRACT STARTS 5 FEET OUTSIDE BUILDING AT FLANGE \*  
 \* ALL UNDERGROUND PIPING SHOWN FOR REFERENCE ONLY NOT IN CONTRACT \*

**SCOPE OF WORK:**  
 T11 WOOD CONSTRUCTION  
 WET SYSTEM ON THE FIRST THROUGH FOURTH FLOORS

**FIRE SPRINKLER NOTES:**  
 SYSTEM DESIGNED AS PER NFPA #13 2011 EDITION  
 128 TOTAL SPRINKLER HEADS W/ DEFLECTORS @ 1'-12" FROM BOTTOM OF CEILING/DECK & PARALLEL FOR PENDANTS, AND 4'-6" FOR SIDEWALLS  
 16,400 SQ. FT. TOTAL AREA PROTECTED ON FIRST FLOOR

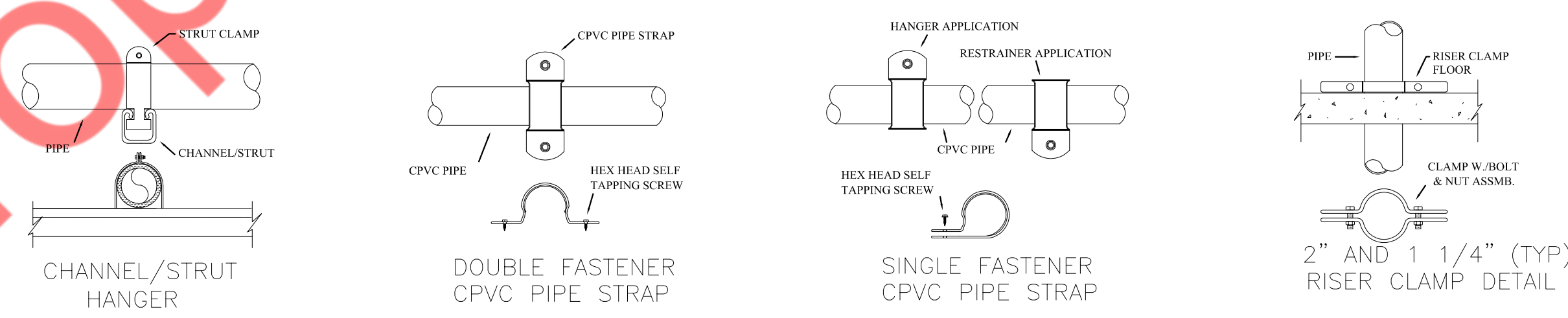
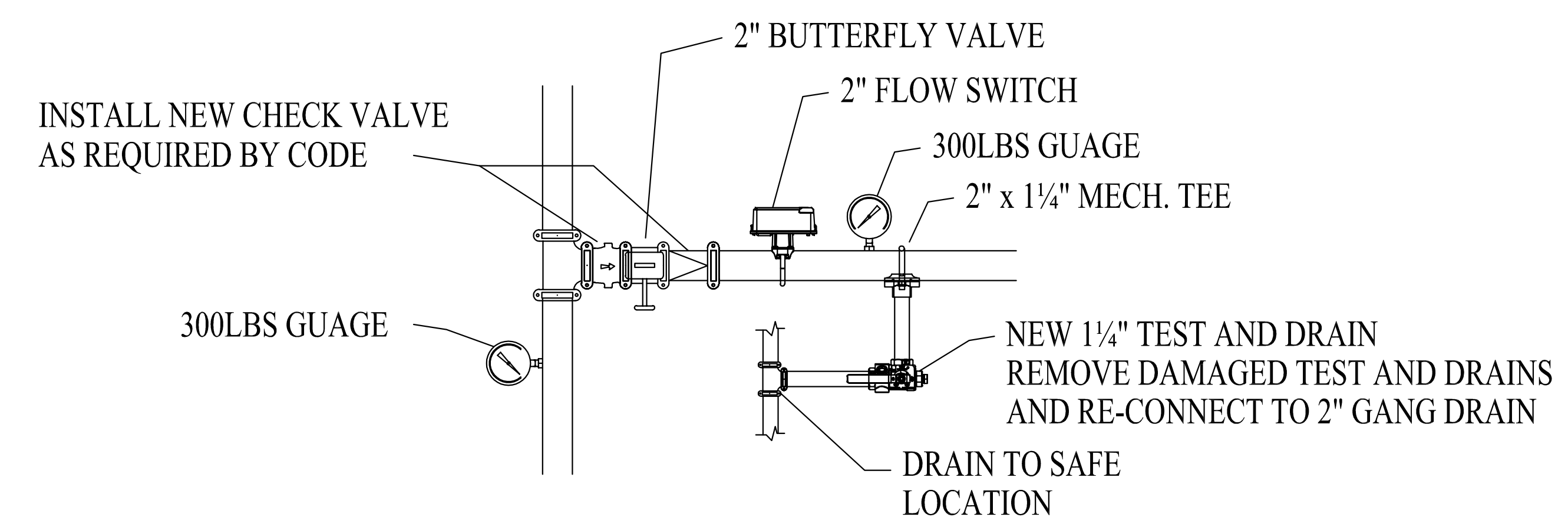
**CONTRACTOR SHALL:**  
 PROVIDE REQUIRED SIGNS & FLUSHING CONNECTIONS  
 CONTRACTORS MATERIAL AND TEST CERTIFICATES FOR ABOVE GROUND AND UNDERGROUND PIPE SHALL BE SUBMITTED TO THE FIRE MARSHALL PRIOR TO APPROVAL OF THE INSTALLATION

**PIPE MATERIAL:**  
 1" - 1 1/4" SCHEDULE 40 THREADED BLACK STEEL W/ THREADED CAST IRON FITTINGS  
 WET SYSTEM BLACK STEEL PIPE, DRY SYSTEM TO BE GALVANIZED  
 2"-6" SCHEDULE 10 GROOVED BLACK STEEL W/ GROOVED FITTINGS W/ WELDED OUTLETS  
 1" TO 2" BLAZEMASTER CPVC PIPE & FITTINGS  
 ALL DIMENSIONS & ELEVATIONS ARE CENTERLINE OF PIPE & STEEL UNLESS NOTED OTHERWISE  
 CONTRACTOR TO VERIFY  
 ALL PIPE LENGTHS SHOWN ARE CENTER TO CENTERS

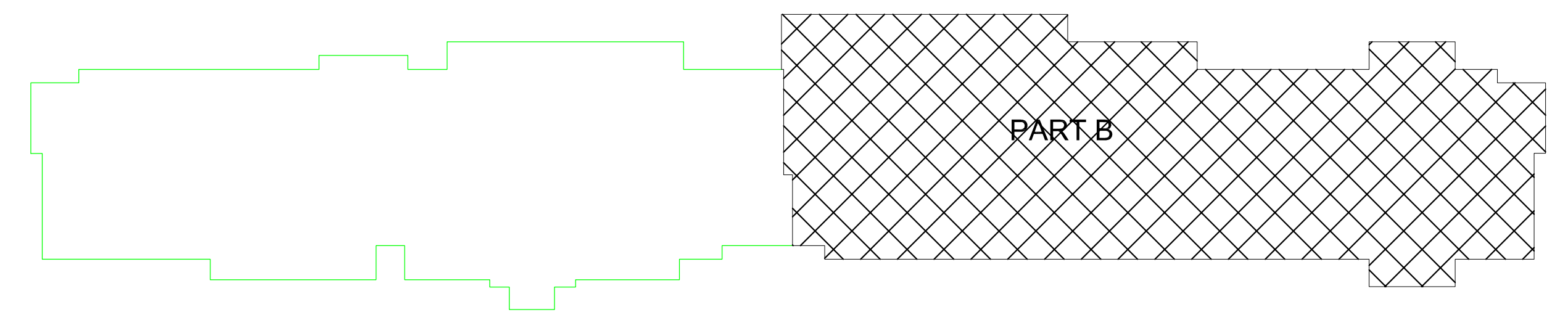
Calculation results for Design Area 3 - Laundry  
 This system as shown on **Briad Construction** company print no. dated April 16, 2019 for **Homewood Suites by Hilton** at **100 Paragonage Road** contract no. **18-4938** is designed to discharge at a rate of **0.15** gpm/ft<sup>2</sup> (L/min/m<sup>2</sup>) of floor area over a maximum area of **900** ft<sup>2</sup> when supplied with water at a rate of **549.9** gpm at **-21.9** psi at the base of the riser. Hose stream allowance of \_\_\_\_\_ is included in the above.

Occupancy classification: **Ordinary Hazard, Gr. 1** Number of heads flowing: **15**  
 Commodity classification: \_\_\_\_\_ System Type: **Wet**  
 Maximum storage height: \_\_\_\_\_ Maximum velocity: **23.23** ft/s  
 Storage arrangement: \_\_\_\_\_

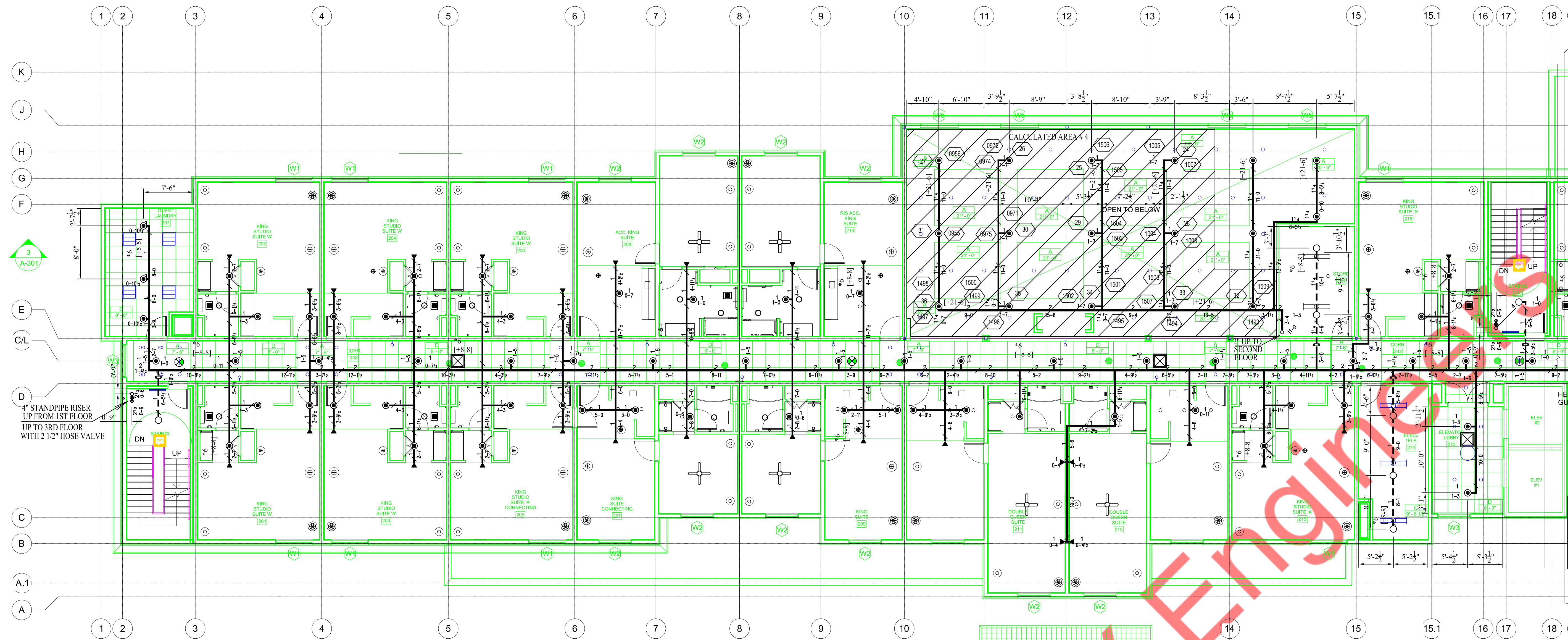
Flow from In-Rack sprinklers:	0 gpm	Pressure Required at Source:	-21.9 psi
Flow from Overhead sprinklers:	290.5 gpm	Pressure Available at Source:	55.2 psi
Flow from Inside Hoses:	0 gpm	Surplus Pressure at Source:	77 psi
Flow from Outside Hoses:	250 gpm		
Other fixed flows:	0 gpm		
Total flow in system piping:	549.5 gpm		
Additional flow at/ beyond source:	0 gpm		
Total of all flows:	549.5 gpm		



(CPVC) HANGER DETAILS  
 NOT TO SCALE







MATCH LINE B-B SEE DRAWING FSP 7 OF 11

Calculation results for Design Area 4 - Lobby

This system as shown on Brand Construction company print no. \_\_\_\_\_ dated April 16, 2019 for Homewood Suites by Hilton at 100 Parsonage Road contract no. 18-4938 is designed to discharge at a rate of 0.1 gpm/ft<sup>2</sup> (L/min/m<sup>2</sup>) of floor area over a maximum area of 1500 ft<sup>2</sup> when supplied with water at a rate of 377.8 gpm at 44.6 psi at the base of the riser. Hose stream allowance of \_\_\_\_\_ is included in the above.

Occupancy classification:	Light Hazard Occupancy	Number of heads flowing:	13
Commodity classification:		System Type:	Wet
Maximum storage height:		Maximum velocity:	28.29 f/s
Storage arrangement:			

Flow from In-Rack sprinklers:	0 gpm	Pressure Required at Source:	44.6 psi
Flow from Overhead sprinklers:	277.8 gpm	Pressure Available at Source:	55.6 psi
Flow from Inside Hoses:	0 gpm	Surplus Pressure at Source:	10.9 psi
Flow from Outside Hoses:	100 gpm		
Other fixed flows:	0 gpm		
Total flow in system piping:	377.8 gpm		
Additional flow at/beyond source:	0 gpm		
Total of all flows:	377.8 gpm		

**SECOND FLOOR WEST FIRE SPRINKLER PLAN**

SCALE 1/8"=1'-0"

\* LIGHT HAZARD OCCUPANCY UNLESS OTHERWISE NOTED \*  
 \* 16 X 20 SQ. FT. MAXIMUM PROTECTION AREA FOR HOTEL UNITS  
 \* 14 X 14 SQ. FT. MAXIMUM PROTECTION AREA FOR HALLWAYS  
 \* CONTRACTOR'S CONTRACT STARTS 5 FEET OUTSIDE BUILDING AT FLANGE \*  
 \* ALL UNDERGROUND PIPING SHOWN FOR REFERENCE ONLY NOT IN CONTRACT \*

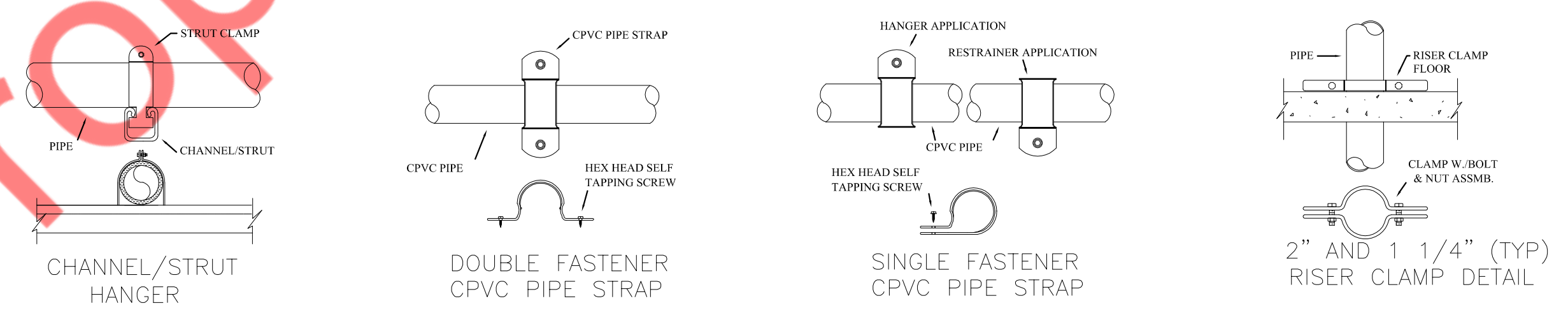
SCOPE OF WORK:  
 TJI WOOD CONSTRUCTION  
 WET SYSTEM ON THE FIRST THROUGH FOURTH FLOORS

FIRE SPRINKLER NOTES:  
 SYSTEM DESIGNED AS PER NFPA #13 2013 EDITION  
 117 TOTAL SPRINKLER HEADS W/ DEFLECTORS @ 1'-12" FROM BOTTOM OF CEILING/ DECK & PARALLEL FOR PENDANTS, AND 4'-6" FOR SIDEWALLS  
 16,400 SQ. FT. TOTAL AREA PROTECTED ON SECOND FLOOR

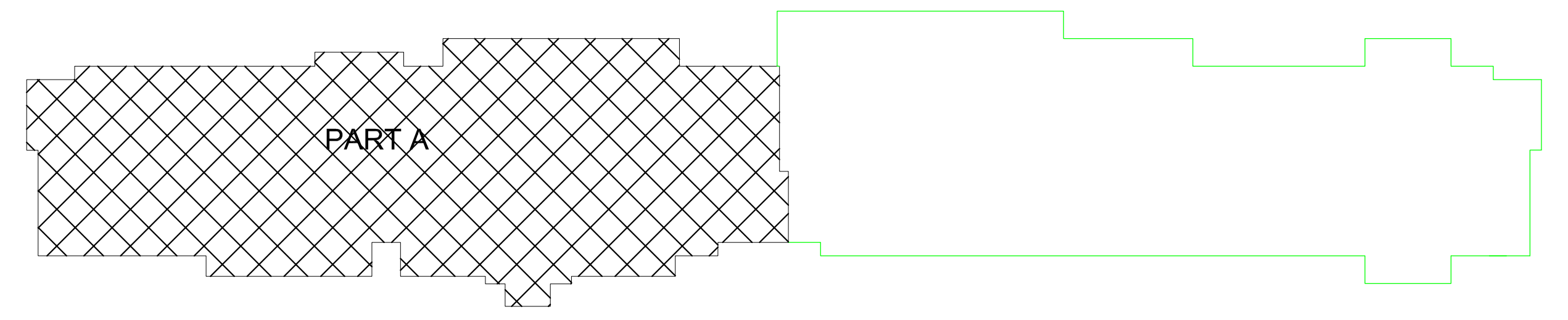
CONTRACTOR SHALL:  
 PROVIDE REQUIRED SIGNS & FLUSHING CONNECTIONS  
 CONTRACTORS MATERIAL AND TEST CERTIFICATES FOR ABOVE GROUND AND UNDERGROUND PIPE SHALL BE SUBMITTED TO THE FIRE MARSHALL PRIOR TO APPROVAL OF THE INSTALLATION

PIPE MATERIAL:  
 1" - 1 1/4" SCHEDULE 40 THREADED BLACK STEEL W/ THREADED CAST IRON FITTINGS  
 WET SYSTEM BLACK STEEL PIPE, DRY SYSTEM TO BE GALVANIZED  
 2"-6" SCHEDULE 10 GROOVED BLACK STEEL W/ GROOVED FITTINGS W/ WELDED OUTLETS  
 1" TO 2" BLAZEMASTER CPVC PIPE & FITTINGS  
 ALL DIMENSIONS & ELEVATIONS ARE CENTERLINE OF PIPE & STEEL UNLESS NOTED OTHERWISE  
 CONTRACTOR TO VERIFY  
 ALL PIPE LENGTHS SHOWN ARE CENTER TO CENTERS

SPRINKLER LEGEND	
—	WET CPVC SPRINKLER PIPE
- - -	STEEL SPRINKLER PIPE
.....	STEEL STANDPIPE
○	HYDRAULIC NODE
○	SPRINKLER RISER/DROP NIPPLE
—	HANGER (SEE DETAIL SHEET 2)
⊠	FIRE DEPARTMENT CONNECTION

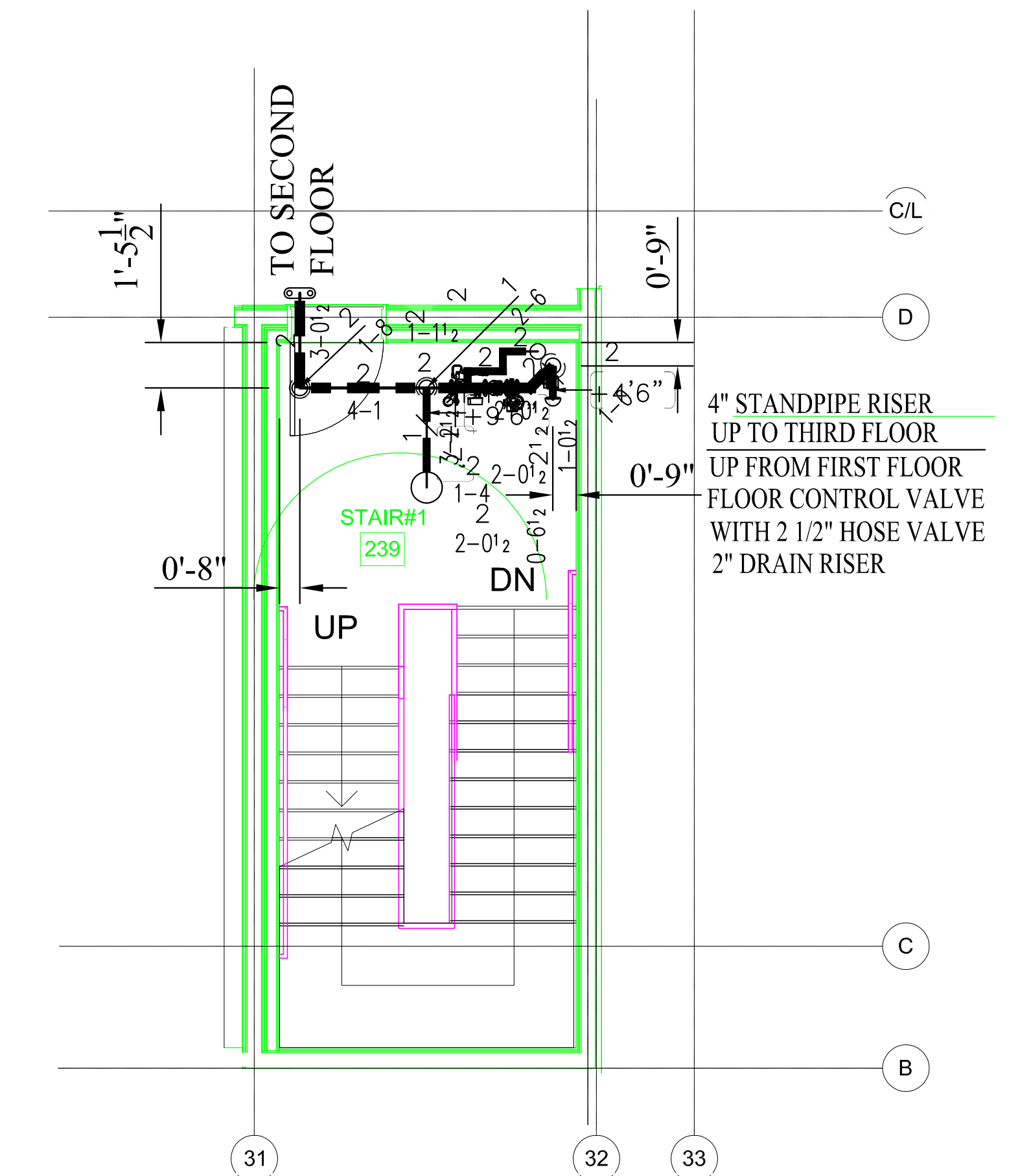
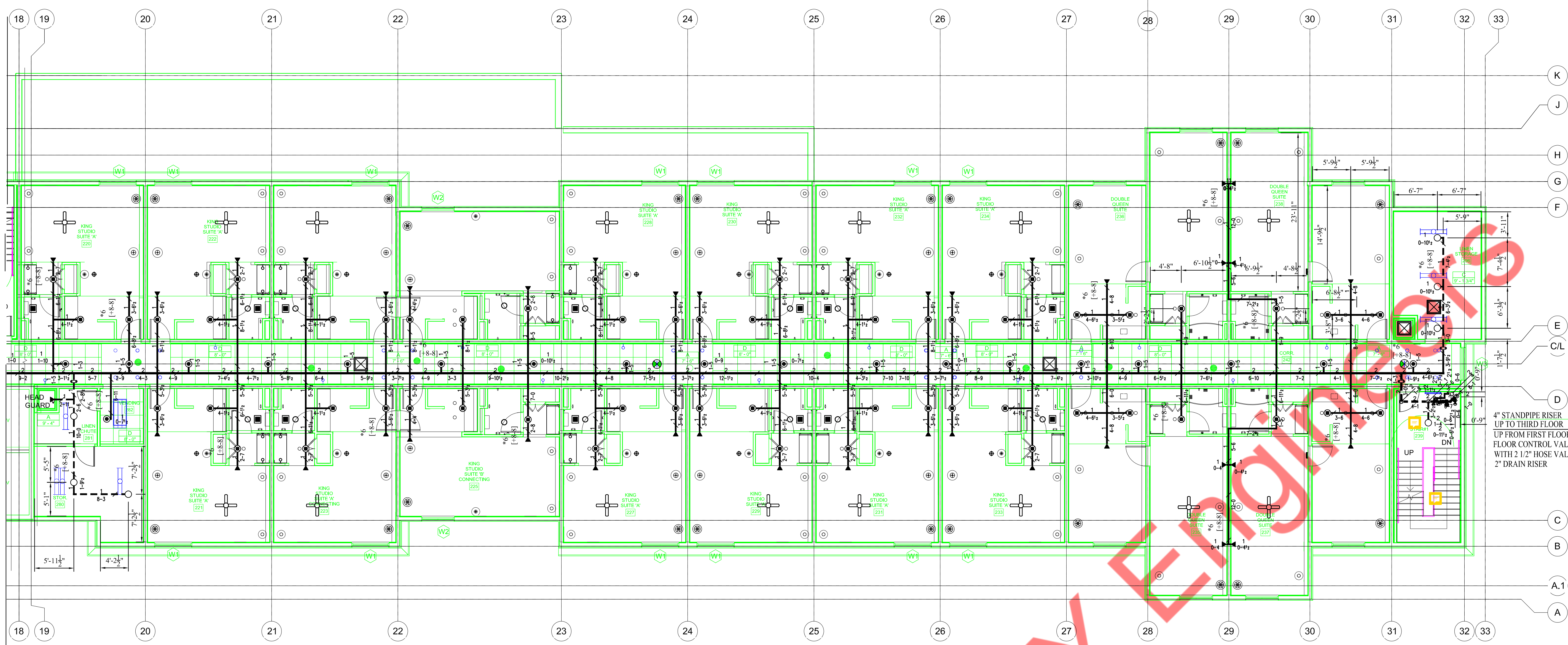


(CPVC) HANGER DETAILS  
 NOT TO SCALE





MATCH LINE B-B SEE DRAWING FSP 6 OF 11



**SECOND FLOOR EAST FIRE SPRINKLER PLAN**

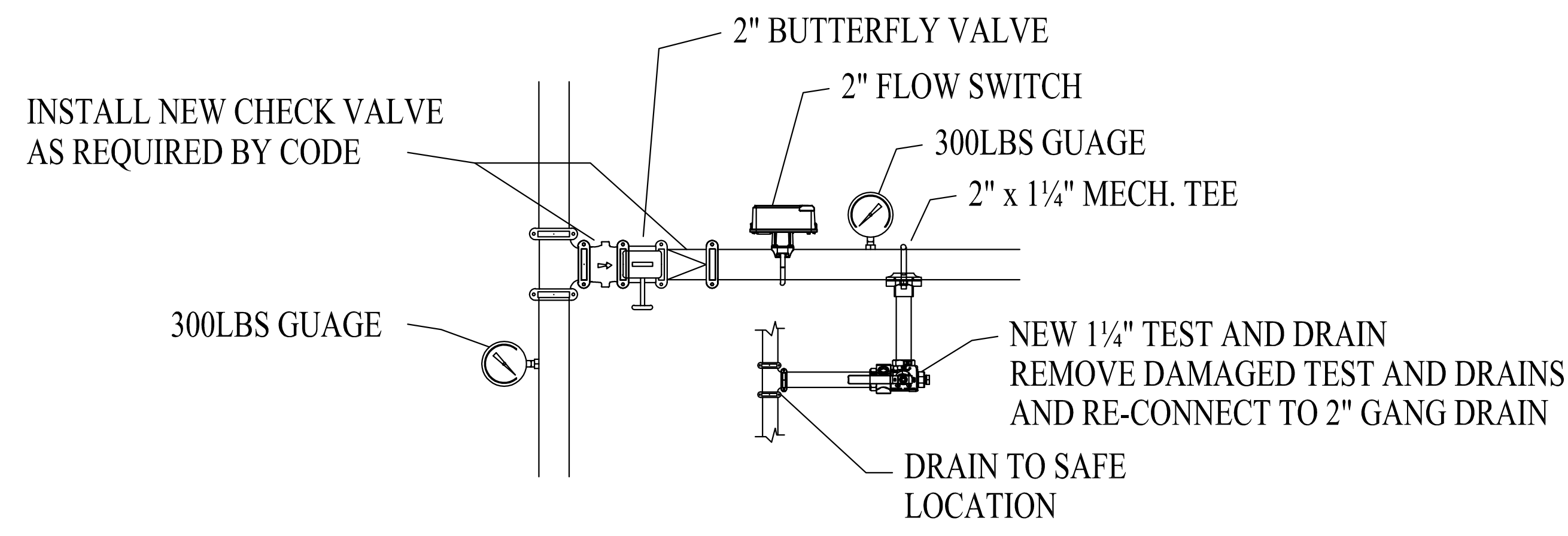
SCALE 1/8"=1'-0"  
 \* LIGHT HAZARD OCCUPANCY UNLESS OTHERWISE NOTED \*  
 \* 16 X 20 SQ. FT. MAXIMUM PROTECTION AREA FOR HOTEL UNITS  
 \* 14 X 14 SQ. FT. MAXIMUM PROTECTION AREA FOR HALLWAYS  
 \* CONTRACTOR'S CONTRACT STARTS 5 FEET OUTSIDE BUILDING AT FLANGE \*  
 \* ALL UNDERGROUND PIPING SHOWN FOR REFERENCE ONLY NOT IN CONTRACT \*

**SCOPE OF WORK:**  
 T1 WOOD CONSTRUCTION  
 WET SYSTEM ON THE FIRST THROUGH FOURTH FLOORS

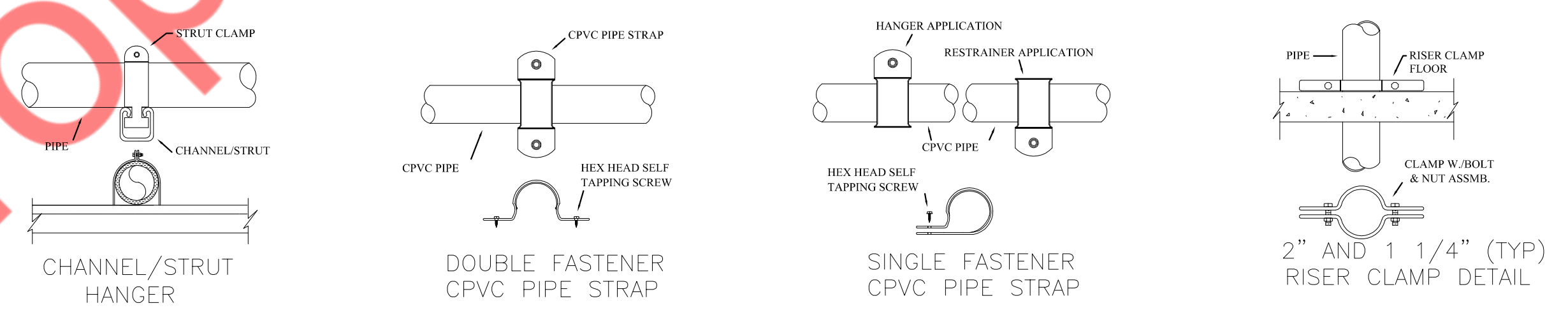
**FIRE SPRINKLER NOTES:**  
 SYSTEM DESIGNED AS PER NFPA #13 2013 EDITION  
 126 TOTAL SPRINKLER HEADS W/ DEFLECTORS @ 1'-12" FROM BOTTOM OF CEILING/ DECK & PARALLEL FOR PENDANTS, AND 4'-6" FOR SIDEWALLS  
 16,400 SQ. FT. TOTAL AREA PROTECTED ON SECOND FLOOR

**CONTRACTOR SHALL:**  
 PROVIDE REQUIRED SIGNS & FLUSHING CONNECTIONS  
 CONTRACTORS MATERIAL AND TEST CERTIFICATES FOR ABOVE GROUND AND UNDERGROUND PIPE SHALL BE SUBMITTED TO THE FIRE MARSHALL PRIOR TO APPROVAL OF THE INSTALLATION

**PIPE MATERIAL:**  
 1" - 1 1/4" SCHEDULE 40 THREADED BLACK STEEL W/ THREADED CAST IRON FITTINGS  
 WET SYSTEM BLACK STEEL PIPE, DRY SYSTEM TO BE GALVANIZED  
 2"-6" SCHEDULE 10 GROOVED BLACK STEEL W/ GROOVED FITTINGS W/ WELDED OUTLETS  
 1" TO 2" BLAZEMASTER CPVC PIPE & FITTINGS  
 ALL DIMENSIONS & ELEVATIONS ARE CENTERLINE OF PIPE & STEEL UNLESS NOTED OTHERWISE  
 CONTRACTOR TO VERIFY  
 ALL PIPE LENGTHS SHOWN ARE CENTER TO CENTERS



SPRINKLER LEGEND	
—	WET CPVC SPRINKLER PIPE
- - -	STEEL SPRINKLER PIPE
----	STEEL STANDPIPE
○	HYDRAULIC NODE
○	SPRINKLER RISER/DROP NIPPLE
—/—	HANGER (SEE DETAIL SHEET 2)
⊠	FIRE DEPARTMENT CONNECTION



(CPVC) HANGER DETAILS  
 NOT TO SCALE

