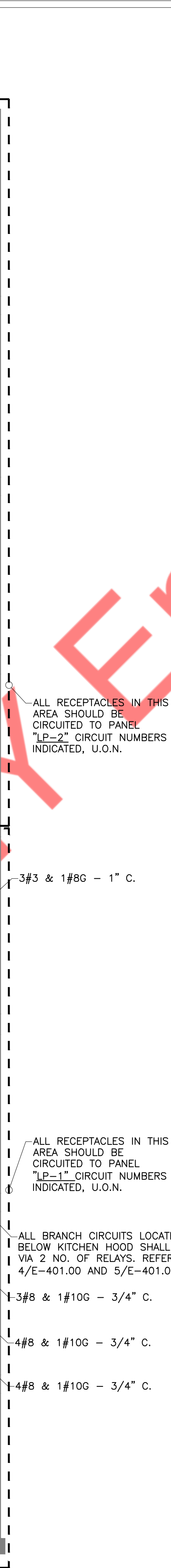


1 GROUND FLOOR POWER PLAN
E-300 1/8"=1'-0"



2 TRANSFORMER LOCATION ABOVE BOILER ROOM PART PLAN
E-300 1/8"=1'-0"

KITCHEN EQUIPMENT SCHEDULE										
ITEM NO.	DESCRIPTION	VOLT	PHASE	AMPS	LOAD(KVA)	CONNECTION	WIRE SIZE	PANEL	LOCATION	MODEL
K1	FIRE MIXER	208	3	28	9.8	DIS.SWITCH	4#8 & 1#10G	PP-2	BAKERY	S-92#3310
K2	DOUBLE OVEN	208	1	28	5.8	DIS.SWITCH	3#8 & 1#10G	PP-2	BAKERY	E32D5/SK32
K3	COOKIE DEPOSITOR	208	1	7	1.5	DIS.SWITCH	2#12 & 1#12G	PP-2	BAKERY	SUPREMA
K4	CHOCOLATE TEMPERER	120	1	11	1.3	DIS.SWITCH	2#12 & 1#12G	PP-2	BAKERY	0912-40
K5	DOUBLE RACK OVEN	208	3	10	3.8	DIS.SWITCH	3#12 & 1#12G	PP-2	BAKERY	LFR-2G
K6	GAS RANGE	--	--	--	--	N.A	N.A	N.A	BAKERY	--
K7	DISHWASHER	208	3	93.9	33.8	DIS.SWITCH	3#3 & 1#8G	PP-2	CLEAN UP AREA	UW50
K8	80QT FLOOR MIXER	208	3	11.0	2.6	DIS.SWITCH	3#12 & 1#12G	PP-2	BAKERY	HL800-1STD

RETAIL EQUIPMENT SCHEDULE										
ITEM NO.	DESCRIPTION	VOLT	PHASE	AMPS	LOAD(KVA)	CONNECTION	WIRE SIZE	PANEL	LOCATION	MODEL
1	UNDER COUNTER D/W	120	1	16	1.8	J.BOX	2#12 & 1#12G	PP-RETAIL	MEETING ROOM	L-1X16
2	MICROWAVE	120	1	13	1.5	5-15R	2#12 & 1#12G	PP-RETAIL	MEETING ROOM	FFM164LS
3	DISPLAY FREEZER	120	1	7.5	0.8	5-20R	2#12 & 1#12G	PP-RETAIL	RETAIL ENTRY	FIP-40
4	PINT FREEZER	120	1	7.0	0.8	5-15R	2#12 & 1#12G	PP-RETAIL	RETAIL ENTRY	TGF-10SD
5	DRINK MACHINE	120	1	12	1.4	5-15R	2#12 & 1#12G	PP-RETAIL	DIPPING AREA	HBS1400
6	HOT FUDGE	120	1	9.2	1.1	5-15R	2#12 & 1#12G	PP-RETAIL	DIPPING AREA	72045
7	2 DOOR FREEZER	120	1	10.5	1.2	5-15R	2#12 & 1#12G	PP-RETAIL	RETAIL STORAGE	M3F47-2
8	ICE MACHINE	120	1	5.5	0.6	5-15R	2#12 & 1#12G	PP-RETAIL	DIPPING AREA	U-140
9	DIPPING CABINET	120	1	11.0	1.2	5-15R	2#12 & 1#12G	PP-RETAIL	DIPPING AREA	BD16-DIP

PROCESS EQUIPMENT SCHEDULE										
ITEM NO.	DESCRIPTION	VOLT	PHASE	AMPS	HP	CONNECTION	STARTER TYPE	WIRE SIZE	PANEL	MODEL
PR1	HEAT SHRINK TUNNEL	208	3	54.0	--	DIS.SWITCH	--	3#6 & 1#10G	PP-1	T4832
PR1a	HEAT SHRINK TUNNEL (FUTURE)	208	1	30.0	--	DIS.SWITCH	--	3/4" CONDUIT	PP-1	2C915A
PR2	ICE CREAM TUB ASSEMBLER	208	3	15.0	--	DIS.SWITCH	--	3#12 & 1#12G	PP-1	CSM-6
PR3	IQ3 METAL DETECTOR	110	1	3.1	--	J.BOX	--	2#12 & 1#12G	PP-1	IQ3+E
PR4	SEMI AUTO BUNDLER (FUTURE)	115	1	17.0	--	5-20R	--	3/4" CONDUIT	PP-1	SW-3614S
PR5	STAN PAC PINT FILLER	208	3	7.0	--	DIS.SWITCH	--	3#12 & 1#12G	PP-1	--
PR6	INKJET PRINTER	120	1	1.0	--	5-15R	--	2#12 & 1#12G	PP-1	VJ1220
PR6a	SHRINK TUNNEL CONVEYOR	208	1	8.8	1.0	J.BOX	--	--	PP-1	--
PR7	ICE CREAM FREEZER	208	3	46.0	15	DIS.SWITCH	--	3#6 & 1#10G	PP-1	--
PR8	FRUIT INGREDIENT FEEDER	208	3	10.6	3.3	DIS.SWITCH	--	3#12 & 1#12G	PP-1	S410
PR9	VARIATOR (RIPPLE PUMP)	208	3	3.3	1.0	DIS.SWITCH	--	3#12 & 1#12G	PP-1	M02997
PR10	BOILER	115	1	--	--	J.BOX	--	2#12 & 1#12G	PP-1	CLEAR FIRE
PR11	RAW PRODUCT DISCHARGE PUMP (CP10-01)	480	3	5.4	1.0	DIS.SWITCH	VFD	3#12 & 1#12G	MCP	AC+216MD56C-S
PR12	LIQUIFER (AG10-01)	480	3	63.0	40.0	DIS.SWITCH	VFD	3#6 & 1#10G	MCP	L0WW 200
PR13	BLENDER TANK DISCHARGE PUMP (CP10-02)	480	3	5.4	2.0	DIS.SWITCH	VFD	3#12 & 1#12G	MCP	AC+216MD14T-S
PR14	VAT PASTEURIZER #1 AGITATOR (A20-01)	480	3	4.8	3.0	DIS.SWITCH	VFD	3#12 & 1#12G	MCP	500 DT
PR14a	VAT PASTEURIZER #1 DISCHARGE PUMP (CP20-02)	480	3	15.0	7.5	DIS.SWITCH	VFD	3#12 & 1#12G	MCP	AC+216MD18T-S
PR15	HOMOGENIZER (P20-03)	480	3	34.0	25.0	DIS.SWITCH	VFD	3#8 & 1#10G	MCP	MC 18TBS
PR16	CHILLED WATER PUMP (CP60-01)	480	3	12.5	5.0	DIS.SWITCH	SINGLE SPEED	3#12 & 1#12G	MCP	--
PR17	ICE BUILDER COMPRESSOR	480	3	37.0	15.0	DIS.SWITCH	SINGLE SPEED	3#8 & 1#10G	PP-HV1	VS200
PR18	ICE BUILDER CONTROLS	120	1	5.0	--	5-20R	--	2#12 & 1#12G	PP-1	--
PR19	LIQUIFER DISCHARGE PUMP (CP10-03)	480	3	5.4	2.0	DIS.SWITCH	VFD	3#12 & 1#12G	MCP	--
PR20	PAST. STORAGE TANK#1 AGITATOR (AG30-01)	480	3	5.4	1.0	DIS.SWITCH	VFD	3#12 & 1#12G	MCP	--
PR21	PAST. STORAGE TANK#2 AGITATOR (AG40-01)	480	3	5.4	1.0	DIS.SWITCH	VFD	3#12 & 1#12G	MCP	--
PR22	PT DISCHARGE PUMP (CP30-01)	480	3	5.4	2.0	DIS.SWITCH	VFD	3#12 & 1#12G	MCP	--
PR23	BLEND TANK AGITATOR (AG10-02)	480	3	5.4	2.0	DIS.SWITCH	VFD	3#12 & 1#12G	MCP	--
PR24	AGITATOR (AG50-02)	480	3	5.4	2.0	DIS.SWITCH	VFD	3#12 & 1#12G	MCP	--
PR25	FLAVOR VAT DISCHARGE PUMP (CP50-01)	480	3	2.4	3.0	DIS.SWITCH	VFD	3#12 & 1#12G	MCP	--
PR26	PAST. TANK CIP RETURN PUMP (CP30-02)	480	3	5.4	1.5	DIS.SWITCH	VFD	3#12 & 1#12G	MCP	AC+216MD14T-S
PR27	NOT USED	--	--	--	--	--	--	--	--	--
PR28	NOT USED	--	--	--	--	--	--	--	--	--
PR29	NOT USED	--	--	--	--	--	--	--	--	--
PR30	COP TANK CIRCULATION PUMP	480	3	4.8	3.0	DIS.SWITCH	VFD	3#12 & 1#12G	PP-HV1	4" COP sink
PR31	CIP SYSTEM SUPPLY PUMP (CP90-01)	480	3	17.5	10.0	DIS.SWITCH	VFD	3#10 & 1#10G	MCP	C-216
PR32	FLAVOR VAT#1 AGITATOR (AG50-01)	480	3	5.4	2.0	DIS.SWITCH	VFD	3#12 & 1#12G	MCP	--
PR33	FLAVOR VAT#2 AGITATOR (AG60-01)	480	3	5.4	2.0	DIS.SWITCH	VFD	3#12 & 1#12G	MCP	--
PR34	FLAVOR VAT#3 AGITATOR (AG70-01)	480	3	5.4	2.0	DIS.SWITCH	VFD	3#12 & 1#12G	MCP	--
PR35	PREP KETTLE DISCHARGE PUMP (FUTURE)	480	3	4.8	3.0	DIS.SWITCH	VFD	3/4" CONDUIT	MCP	AC+216MD14T-S
PR36	RAW MILK STORAGE TANK (FUTURE)	480	3	3.4	2.0	DIS.SWITCH	SINGLE SPEED	3/4" CONDUIT	MCP	--
PR37	RAW CREAM STORAGE TANK (FUTURE)	480	3	3.4	2.0	DIS.SWITCH	SINGLE SPEED	3/4" CONDUIT	MCP	--
PR38	MILK RECEIVING PUMP (FUTURE)	480	3	3.4	2.0	DIS.SWITCH	SINGLE SPEED	3/4" CONDUIT	MCP	--
PR39	HOT WATER PUMP (CP80-01)	480	3	12.5	5.0	DIS.SWITCH	VFD	3#12 & 1#12G	MCP	--
PR40	AIR COMPRESSOR (WABCO TO PROVIDE)	480	3	3.4	2.0	DIS.SWITCH	--	3#12 & 1#12G	PP-HV2	WABCO
PR41	44QT BATCH FREEZER	208	3	30.8	11.0	DIS.SWITCH	--	3#8 & 1#10G	PP-1	44BLT
PR42	WCB FREEZER	460	3	--	--	--	--	--	--	--

REFRIGERATION EQUIPMENT SCHEDULE										
ITEM NO.	DESCRIPTION	VOLT	PHASE	RLA	HP	OCPD(A)	WIRE SIZE	PANEL	LOCATION	MODEL
R1	MILK TOTE COOLER (COMPRESSOR)	460	3	8.1	3.0	15	3#12 & 1#12G	PP-HV1	ROOF	BZT030M6D
R1a	MILK TOTE COOLER (EVAPORATOR)	460	1	10.0	--	20	2#12 & 1#12G	PP-HV1	TOTE REFRI.	ADT260MK
R2	STORAGE FREEZER (COMPRESSOR)	460	3	37.6	22.0	60	3#8 & 1#10G	PP-HV1	ROOF	BDT2200L6D
R2a	STORAGE FREEZER (EVAPORATOR)	460	3	48.3	--	80	3#4 & 1#8G	PP-HV1	STORAGE FREEZER	BHL840DPA
R3	MIX IN FREEZER (COMPRESSOR)	460	3	10.6	5.5	20	3#12 & 1#12G	PP-HV1	ROOF	BZT055L6D
R3a	MIX IN FREEZER (EVAPORATOR)	460	1	14.2	--	20	2#12 & 1#12G	PP-HV1	MIX IN FREEZER	LET180MK
R4	BAKERY FRIDGE (COMPRESSOR)	460	3	6.8	2.0	15	3#12 & 1#12G	PP-HV1	ROOF	BZT020M6D
R4a	BAKERY FRIDGE (EVAPORATOR)	460	1	6.4	--	15	2#12 & 1#12G	PP-HV1	BAKERY FRIDGE	ADT208MK
R5	BLAST FREEZER (COMPRESSOR)	460	3	61.8	30.0	100	3#4 & 1#10G	PP-HV1	ROOF	BLV300L16D
R5a	BLAST FREEZER (EVAPORATOR)	208	3	52.3	--	70	3#4 & 1#8G	PP-HV1	BLAST FREEZER	BHL560CA

NOTE: COORDINATE EXACT LOCATIONS, MAKE & FINAL FINISH WITH THE ARCHITECT.

CIRCUIT LEGEND
ALL CIRCUITS SHOWN ON THIS DWG. SHALL BE CONNECTED TO NEW PANELBOARDS WITH THE FOLLOWING PREFIXES, U.O.N.:
PP-1 (CIRCUITING DENOTED # WITH PREFIX 'A')
PP-2 (CIRCUITING DENOTED # WITH PREFIX 'B')
PP-3 (CIRCUITING DENOTED # WITH PREFIX 'C')
PP-HV1 (CIRCUITING DENOTED # WITH PREFIX 'D')
PP-HV2 (CIRCUITING DENOTED # WITH PREFIX 'E')

POWER DRAWING NOTES:
1. ALL BRANCH CIRCUITS HOMERUNS ASSIGN INDICATED ON THIS PLAN SHALL BE CIRCUITED TO PANEL ASSIGNED ON THE PLANS, UNLESS OTHERWISE NOTED.
2. REFER TO DWG. E-001.00 FOR ELECTRICAL GENERAL NOTES, SYMBOL LIST & ABBREVIATIONS, AND TO FOR ADDITIONAL ELECTRICAL SPECIFICATIONS.
3. PANELS PP-3 & PP-2 ARE MOUNTED ON THE COLUMN WITH KINORFF SUPPORT.
4. COORDINATE WITH THE SAGNAW MCP SHOP DRAWINGS FOR ELECTRICAL CONNECTION DETAILS FOR ALL 480V, 3 PHASE PROCESS EQUIPMENTS POWERED BY VFD'S.

KEYED WORK NOTES:
1. ARCHITECT TO PROVIDE A HATCH AND LADDER TO ACCESS THE TRANSFORMER & MDP MOUNTED ABOVE THE BOILER ROOM CEILING.
2. JUNCTION BOX HAS BEEN PROVIDED FOR LIGHTING. IN THE TRANSFORMER ROOM AND CONTRACTOR TO COORDINATE FIXTURES AND ASSOCIATED WIRING AT THE SITE.

