



ALL BRANCH CIRCUITS IN THIS AREA SHALL BE CIRCUITED TO PANEL 'HP-C-1', CIRCUIT NUMBERS INDICATED U.O.N.

1 CELLAR LIGHTING PLAN  
1/8" = 1'-0"

GENERAL NOTE:

1. TRADE CONTRACTORS TO PROVIDE ALL LOCATIONS OF REQUIRED ACCESS TO GENERAL CONTRACTOR. GENERAL CONTRACTOR TO COORDINATE WITH ARCHITECT ON ACCESS DOOR LOCATIONS AND INSTALL ACCESS DOORS.

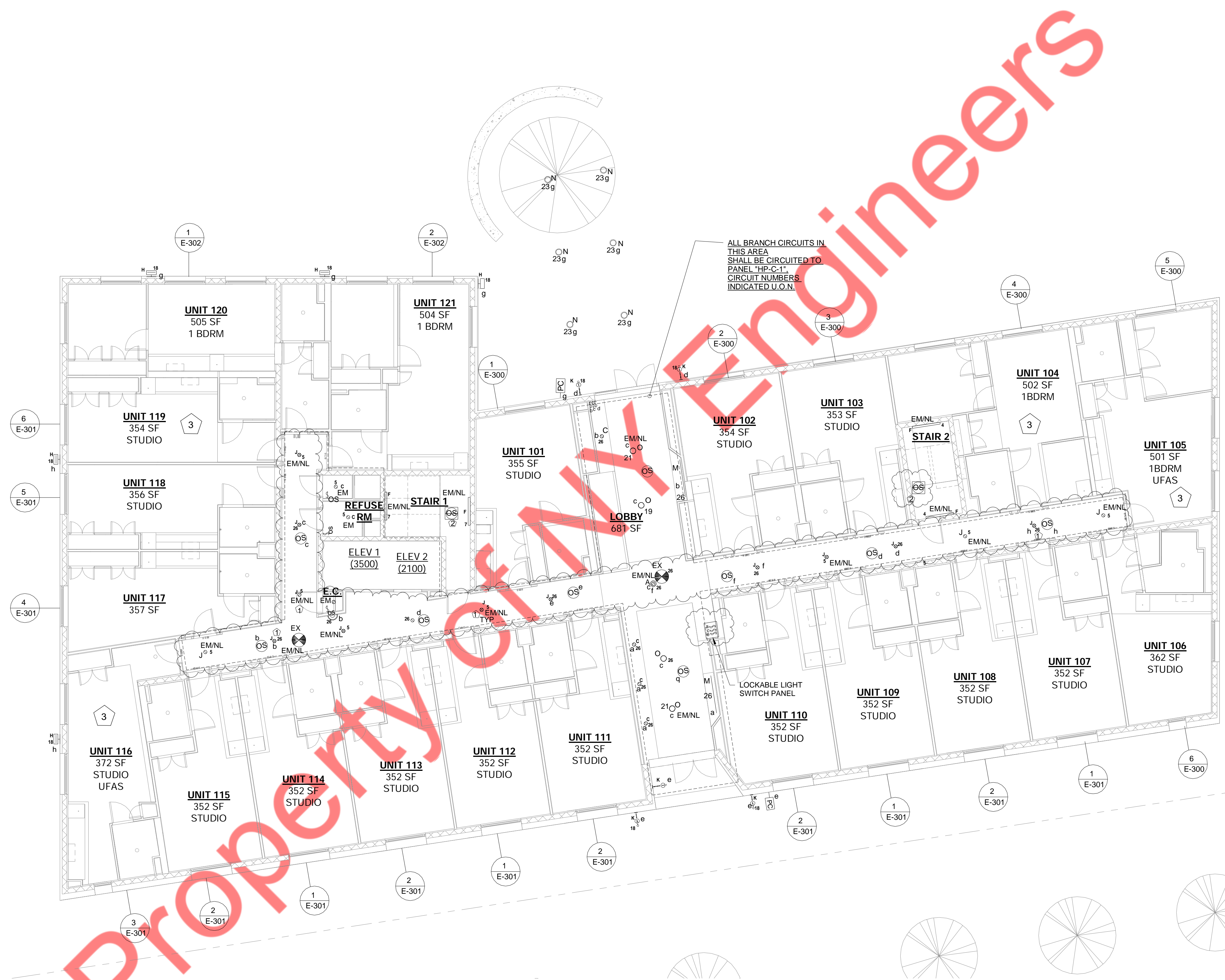
KEYED WORKED NOTES:

- 1 LIGHT FIXTURE TO REMAIN 'ON' CONTINUOUSLY .
- 2 REFER SHEET 5/E-401 FOR MORE INFORMATION .
- 3 FIXTURES AND SWITCHES TO BE EXPLOSION PROOF .
- 4 FIXTURES IN THE STARWAYS ARE CONTROLLED BY RADIO POWER SAVER OCCUPANCY SENSOR (LUTRON) WHICH ALLOWS THE FIXTURE TO BE DE-ENERGIZED TO HAVE 50% BRIGHTNESS WHEN NO OCCUPANCY AND HAVE FULL BRIGHTNESS IF THE SPACE IS OCCUPIED.

LIGHTING DRAWING NOTES:

1. REFER TO DWG. E-001.00 FOR ELECTRICAL GENERAL NOTES, SYMBOL LIST & ABBREVIATIONS AND E-002.00 FOR LIGHT FIXTURE SCHEDULE AND LIGHTING CONTROLS
2. ELECTRICAL CONTRACTOR TO COORDINATE THE LOCATION OF ALL VISIBLE ITEMS SUCH AS LIGHTING, SWITCHES, ACCESS PANELS, S/CO DETECTORS ETC WITH THE ARCHITECT/RCP.





1 GROUND FLOOR LIGHTING PLAN  
1/8" = 1'-0"

GENERAL NOTE:  
1. TRADE CONTRACTORS TO PROVIDE ALL LOCATIONS OF REQUIRED ACCESS TO GENERAL CONTRACTOR. GENERAL CONTRACTOR TO COORDINATE WITH ARCHITECT ON ACCESS DOOR LOCATIONS AND INSTALL ACCESS DOORS.

- KEYED WORKED NOTES:
- 1 LIGHT FIXTURE TO REMAIN 'ON' CONTINUOUSLY .
  - 2 FIXTURES IN THE STAIRWAYS ARE CONTROLLED BY RADIO POWER SAVER OCCUPANCY SENSOR (LUTRON) WHICH ALLOWS THE FIXTURE TO BE DE-ENERGIZED TO HAVE 50% BRIGHTNESS WHEN NO OCCUPANCY AND HAVE FULL BRIGHTNESS IF THE SPACE IS OCCUPIED.
  - 3 ELECTRICAL CONTRACTOR TO COORDINATE SWITCH HEIGHT WITH UFA STANDARDS AND ARCHITECT FOR UFAS APARTMENTS.

- LIGHTING DRAWING NOTES:
- 1. REFER TO DWG. E-001.00 FOR ELECTRICAL GENERAL NOTES, SYMBOL LIST & ABBREVIATIONS AND E-002.00 FOR LIGHT FIXTURE SCHEDULE AND LIGHTING CONTROLS
  - 2. ELECTRICAL CONTRACTOR TO COORDINATE THE LOCATION OF ALL VISIBLE ITEMS SUCH AS LIGHTING, SWITCHES, ACCESS PANELS, S/CO DETECTORS ETC WITH THE ARCHITECT/RCP.





ALL BRANCH CIRCUITS IN THIS AREA SHALL BE CIRCUITED TO PANEL "HP-3" CIRCUIT NUMBERS INDICATED U.O.N.

1 2ND FLOOR LIGHTING PLAN  
1/8" = 1'-0"

GENERAL NOTE:  
1. TRADE CONTRACTORS TO PROVIDE ALL LOCATIONS OF REQUIRED ACCESS TO GENERAL CONTRACTOR. GENERAL CONTRACTOR TO COORDINATE WITH ARCHITECT ON ACCESS DOOR LOCATIONS AND INSTALL ACCESS DOORS.

- KEYED WORKED NOTES:
- 1 LIGHT FIXTURE TO BE REMAIN 'ON' CONTINUOUSLY .
  - 2 FIXTURES IN THE STAIRWAYS ARE CONTROLLED BY RADIO POWER SAVER OCCUPANCY SENSOR (LUTRON) WHICH ALLOWS THE FIXTURE TO BE DE-ENERGIZED TO HAVE 50% BRIGHTNESS WHEN NO OCCUPANCY AND HAVE FULL BRIGHTNESS IF THE SPACE IS OCCUPIED.
  - 3 ELECTRICAL CONTRACTOR TO COORDINATE SWITCH HEIGHT WITH UFA STANDARDS AND ARCHITECT FOR UFAS APARTMENTS.

- LIGHTING DRAWING NOTES:
- 1. REFER TO DWG. E-001.00 FOR ELECTRICAL GENERAL NOTES, SYMBOL LIST & ABBREVIATIONS AND E-002.00 FOR LIGHT FIXTURE SCHEDULE AND LIGHTING CONTROLS
  - 2. ELECTRICAL CONTRACTOR TO COORDINATE THE LOCATION OF ALL VISIBLE ITEMS SUCH AS LIGHTING, SWITCHES, ACCESS PANELS, S/CO DETECTORS ETC WITH THE ARCHITECT/RCP.





1 3RD FLOOR LIGHTING PLAN  
1/8" = 1'-0"

GENERAL NOTE:

1. TRADE CONTRACTORS TO PROVIDE ALL LOCATIONS OF REQUIRED ACCESS TO GENERAL CONTRACTOR. GENERAL CONTRACTOR TO COORDINATE WITH ARCHITECT ON ACCESS DOOR LOCATIONS AND INSTALL ACCESS DOORS.

KEYED WORKED NOTES:

- 1 LIGHT FIXTURE TO REMAIN 'ON' CONTINUOUSLY .
- 2 FIXTURES IN THE STAIRWAYS ARE CONTROLLED BY RADIO POWER SAVER OCCUPANCY SENSOR (LUTRON) WHICH ALLOWS THE FIXTURE TO BE DE-ENERGIZED TO HAVE 50% BRIGHTNESS WHEN NO OCCUPANCY AND HAVE FULL BRIGHTNESS IF THE SPACE IS OCCUPIED.
- 3 ELECTRICAL CONTRACTOR TO COORDINATE SWITCH HEIGHT WITH UFA STANDARDS AND ARCHITECT FOR UFAS APARTMENTS.

LIGHTING DRAWING NOTES:

1. REFER TO DWG. E-001.00 FOR ELECTRICAL GENERAL NOTES, SYMBOL LIST & ABBREVIATIONS AND E-002.00 FOR LIGHT FIXTURE SCHEDULE AND LIGHTING CONTROLS
2. ELECTRICAL CONTRACTOR TO COORDINATE THE LOCATION OF ALL VISIBLE ITEMS SUCH AS LIGHTING, SWITCHES, ACCESS PANELS, S/CO DETECTORS ETC WITH THE ARCHITECT/RCP.





ALL BRANCH CIRCUITS IN THIS AREA SHALL BE CIRCUITED TO PANEL "HP-3", CIRCUIT NUMBERS INDICATED U.O.N.

1 4TH FLOOR LIGHTING PLAN  
1/8" = 1'-0"

GENERAL NOTE:

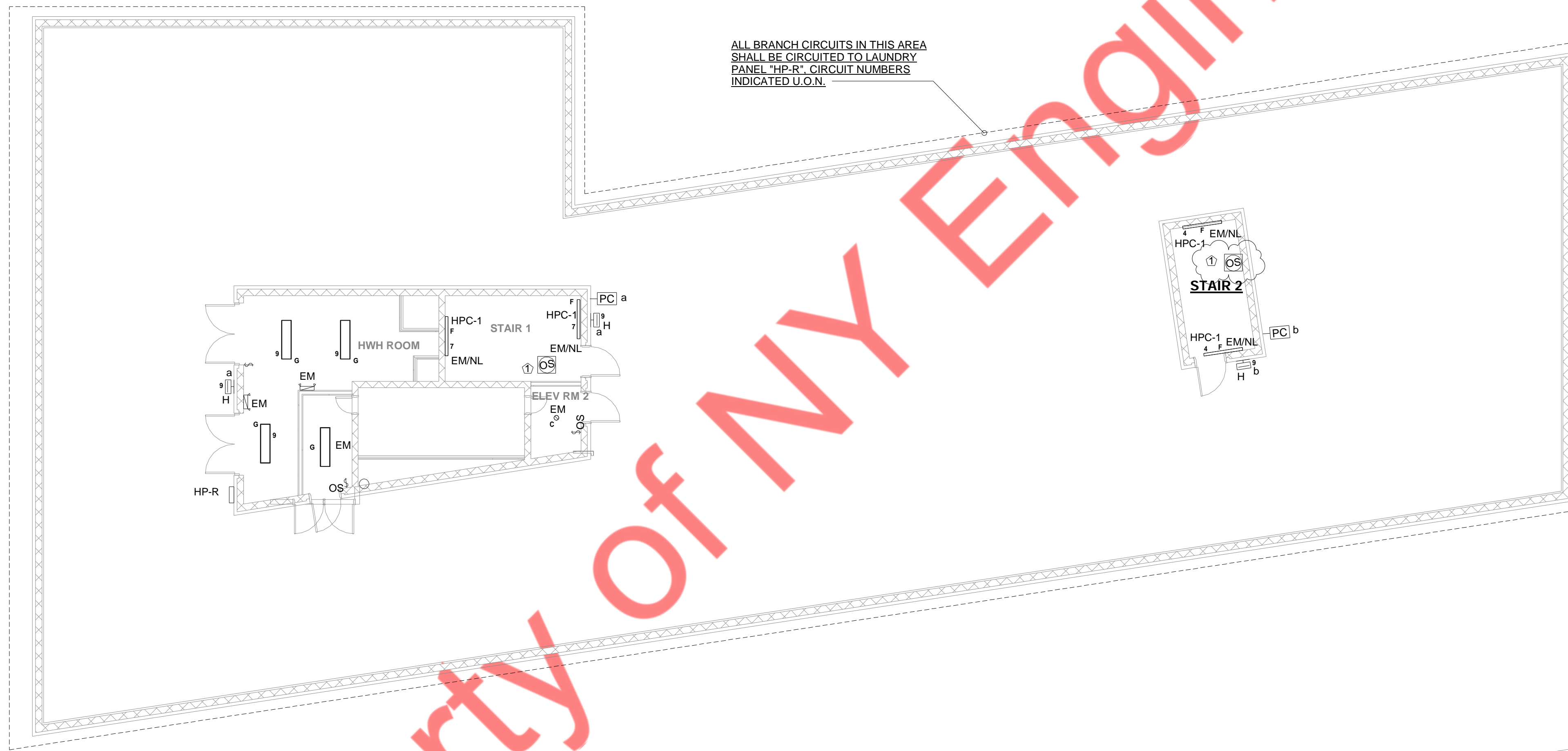
1. TRADE CONTRACTORS TO PROVIDE ALL LOCATIONS OF REQUIRED ACCESS TO GENERAL CONTRACTOR. GENERAL CONTRACTOR TO COORDINATE WITH ARCHITECT ON ACCESS DOOR LOCATIONS AND INSTALL ACCESS DOORS.

KEYED WORKED NOTES:

- 1 LIGHT FIXTURE TO REMAIN 'ON' CONTINUOUSLY .
- 2 FIXTURES IN THE STAIRWAYS ARE CONTROLLED BY RADIO POWER SAVER OCCUPANCY SENSOR (LUTRON) WHICH ALLOWS THE FIXTURE TO BE DE-ENERGIZED TO HAVE 50% BRIGHTNESS WHEN NO OCCUPANCY AND HAVE FULL BRIGHTNESS IF THE SPACE IS OCCUPIED.
- 3 ELECTRICAL CONTRACTOR TO COORDINATE SWITCH HEIGHT WITH UFA STANDARDS AND ARCHITECT FOR UFAS APARTMENTS.

LIGHTING DRAWING NOTES:

1. REFER TO DWG. E-001.00 FOR ELECTRICAL GENERAL NOTES, SYMBOL LIST & ABBREVIATIONS AND E-002.00 FOR LIGHT FIXTURE SCHEDULE AND LIGHTING CONTROLS
2. ELECTRICAL CONTRACTOR TO COORDINATE THE LOCATION OF ALL VISIBLE ITEMS SUCH AS LIGHTING, SWITCHES, ACCESS PANELS, S/CO DETECTORS ETC WITH THE ARCHITECT/RCP.
3. ELECTRICAL CONTRACTOR TO COORDINATE SWITCH HEIGHT WITH UFA STANDARDS AND ARCHITECT FOR UFAS APARTMENTS.



1 ROOF LIGHTING PLAN  
1/8" = 1'-0"

GENERAL NOTE:

1. TRADE CONTRACTORS TO PROVIDE ALL LOCATIONS OF REQUIRED ACCESS TO GENERAL CONTRACTOR. GENERAL CONTRACTOR TO COORDINATE WITH ARCHITECT ON ACCESS DOOR LOCATIONS AND INSTALL ACCESS DOORS.

KEYED WORKED NOTES:

1. FIXTURES IN THE STAIRWAYS ARE CONTROLLED BY RADIO POWER SAVER OCCUPANCY SENSOR (LUTRON) WHICH ALLOWS THE FIXTURE TO BE DE-ENERGIZED TO HAVE 50% BRIGHTNESS WHEN NO OCCUPANCY AND HAVE FULL BRIGHTNESS IF THE SPACE IS OCCUPIED.

LIGHTING DRAWING NOTES:

1. REFER TO DWG. E-001.00 FOR ELECTRICAL GENERAL NOTES, SYMBOL LIST & ABBREVIATIONS AND E-002.00 FOR LIGHT FIXTURE SCHEDULE AND LIGHTING CONTROLS
2. ELECTRICAL CONTRACTOR TO COORDINATE THE LOCATION OF ALL VISIBLE ITEMS SUCH AS LIGHTING, SWITCHES, ACCESS PANELS, S/CO DETECTORS ETC WITH THE ARCHITECT/RCP.



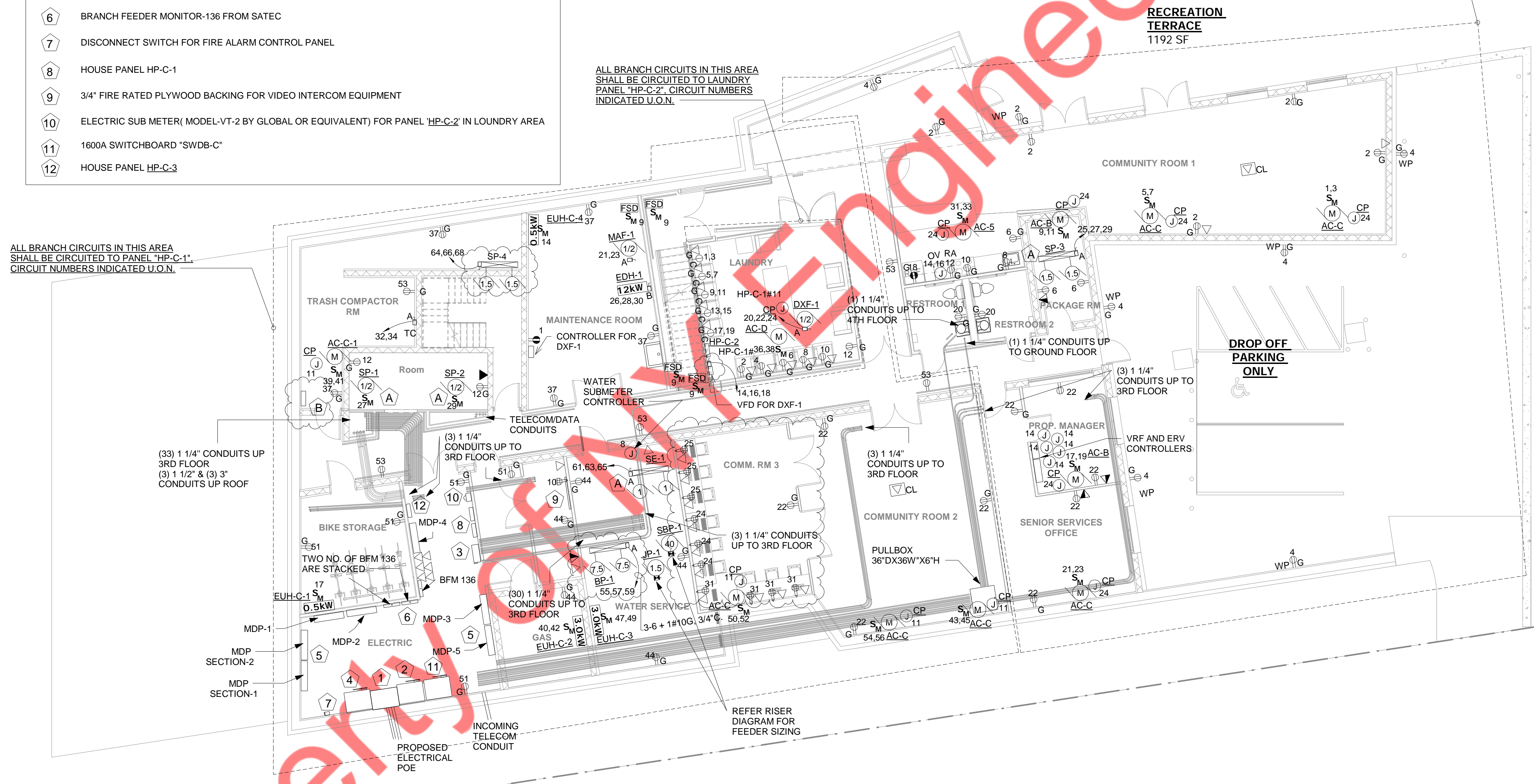
**ELECTRICAL LEGEND**

- ① SERVICE END BOX CON-ED SPEC EO-9073-B.
- ② 1600A SERVICE SWITCH & CT CABINET FOR HOUSE.
- ③ 800A DISCONNECT SWITCH FOR SPRINKLER BOOSTER PUMP.
- ④ 1200A SERVICE SWITCH & CT CABINET FOR APARTMENTS
- ⑤ MAIN DISTRIBUTION PANEL
- ⑥ BRANCH FEEDER MONITOR-136 FROM SATEC
- ⑦ DISCONNECT SWITCH FOR FIRE ALARM CONTROL PANEL
- ⑧ HOUSE PANEL HP-C-1
- ⑨ 3/4" FIRE RATED PLYWOOD BACKING FOR VIDEO INTERCOM EQUIPMENT
- ⑩ ELECTRIC SUB METER (MODEL-VT-2 BY GLOBAL OR EQUIVALENT) FOR PANEL HP-C-2 IN LOUNDRY AREA
- ⑪ 1600A SWITCHBOARD "SWDB-C"
- ⑫ HOUSE PANEL HP-C-3

ALL BRANCH CIRCUITS IN THIS AREA SHALL BE CIRCUITED TO PANEL "HP-C-1", CIRCUIT NUMBERS INDICATED U.O.N.

ALL BRANCH CIRCUITS IN THIS AREA SHALL BE CIRCUITED TO LAUNDRY PANEL "HP-C-2", CIRCUIT NUMBERS INDICATED U.O.N.

ALL BRANCH CIRCUITS IN THIS AREA SHALL BE CIRCUITED TO PANEL "HP-C-3", CIRCUIT NUMBERS INDICATED U.O.N.



① CELLAR ELECTRICAL POWER PLAN  
1/8" = 1'-0"

**GENERAL NOTE:**

1. TRADE CONTRACTORS TO PROVIDE ALL LOCATIONS OF REQUIRED ACCESS TO GENERAL CONTRACTOR. GENERAL CONTRACTOR TO COORDINATE WITH ARCHITECT ON ACCESS DOOR LOCATIONS AND INSTALL ACCESS DOORS.

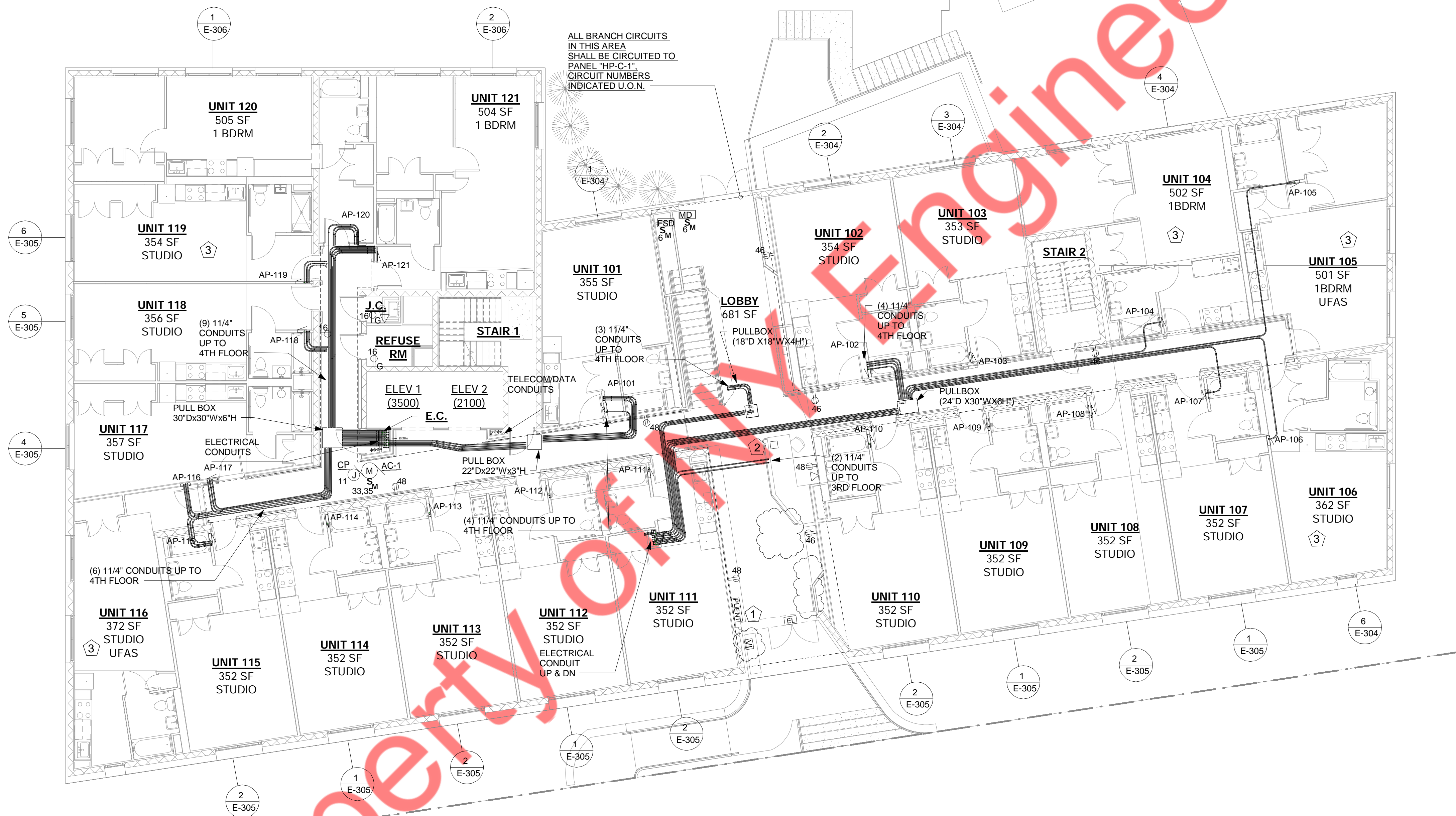
**KEYED WORK NOTE:**

- A COORDINATE LOCATION OF SEWAGE EJECTOR AND SUMP WITH THE PLUMBING ENGINEER'S DRAWING.
- B REFER TO CELLAR PLUMBING PLAN FOR SCOPE/LOCATION OF HEAT TRACE CABLE AND ASSOCIATED EQUIPMENT SPECIFICATION. REFER DWG. E-600.00 FOR ELECTRICAL SPECIFICATIONS.

**POWER DRAWING NOTES:**

1. ALL BRANCH CIRCUITS HOMERUNS ASSIGN INDICATED ON THIS PLAN SHALL BE CIRCUITED TO PANEL AS MENTIONED ON PLANS, CIRCUIT NUMBER INDICATED, U.O.N
2. REFER TO DWG. E-001.00 FOR ELECTRICAL GENERAL NOTES, SYMBOL LIST & ABBREVIATIONS. E-003.00 & E-004.00 FOR ADDITIONAL ELECTRICAL SPECIFICATIONS
- 3.E.C. TO COORDINATE WITH PLUMBING CONTRACTOR FOR INSTALLATION OF HEAT TRACING SYSTEM.





1 GROUND FLOOR ELECTRICAL POWER PLAN  
1/8" = 1'-0"

GENERAL NOTE:

- TRADE CONTRACTORS TO PROVIDE ALL LOCATIONS OF REQUIRED ACCESS TO GENERAL CONTRACTOR. GENERAL CONTRACTOR TO COORDINATE WITH ARCHITECT ON ACCESS DOOR LOCATIONS AND INSTALL ACCESS DOORS.

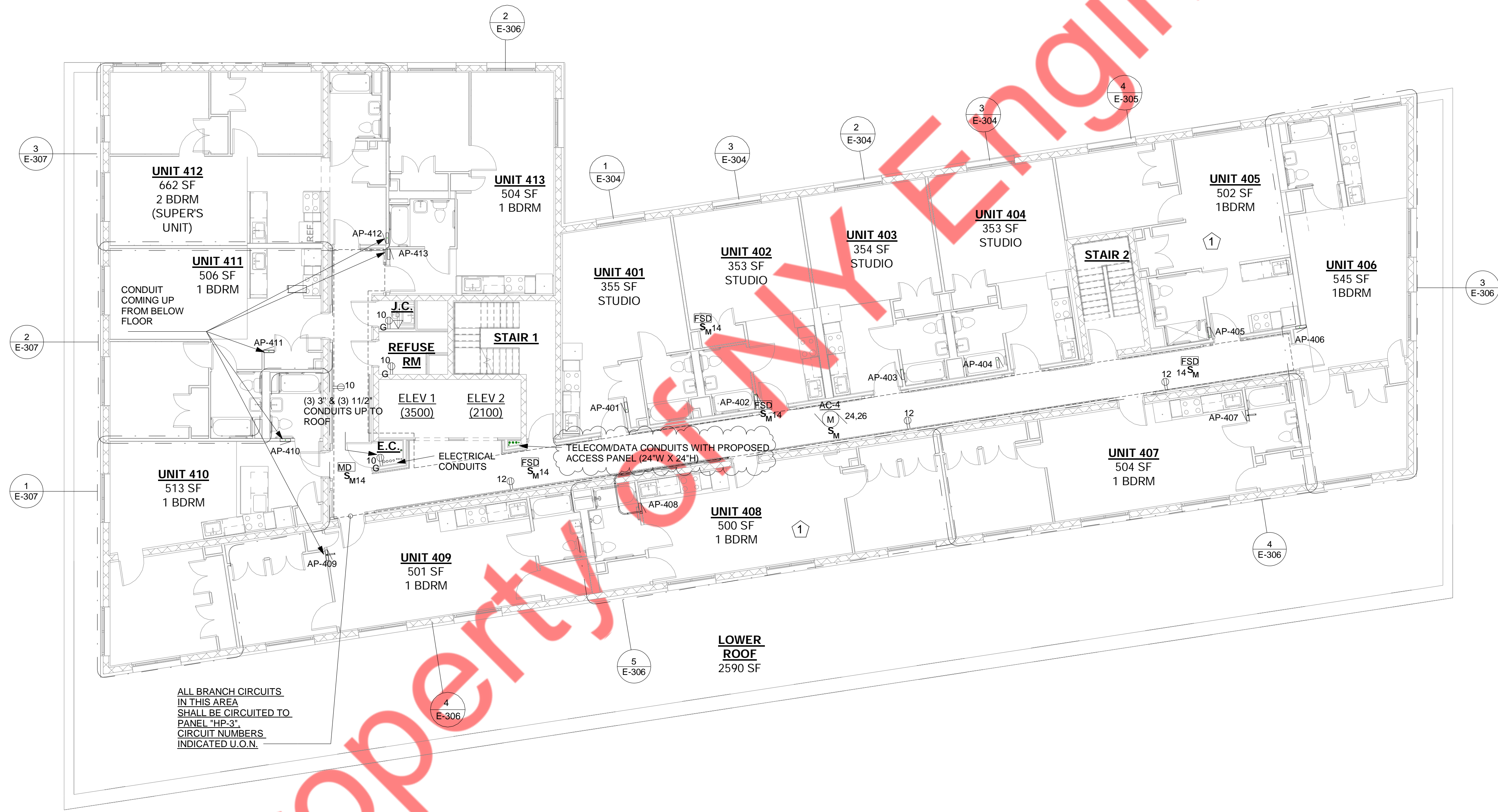
KEYED WORK NOTE:

- REFER DETAIL #1/E-402.00 FOR MORE INFORMATION.
- VIDEO INTEGRATED SERVER FOR INTERCOM SYSTEM FEED TO SECURITY DESK. COORDINATE WITH SECURITY VENDOR/CONTRACTOR FOR MORE DETAILS.
- ELECTRICAL CONTRACTOR TO COORDINATE RECEPTACLE HEIGHT WITH UFA STANDARDS AND ARCHITECT FOR UFAS APARTMENTS.

POWER DRAWING NOTES:

- ALL BRANCH CIRCUITS HOMERUNS ASSIGN INDICATED ON THIS PLAN SHALL BE CIRCUITED TO PANEL AS MENTIONED ON PLANS, CIRCUIT NUMBER INDICATED, U.O.N
- REFER TO DWG. E-001.00 FOR ELECTRICAL GENERAL NOTES, SYMBOL LIST & ABBREVIATIONS. E-003.00 & E-004.00 FOR ADDITIONAL ELECTRICAL SPECIFICATIONS





Property

ENY Engineers

① 4TH FLOOR ELECTRICAL POWER PLAN  
1/8" = 1'-0"

**GENERAL NOTE:**

- TRADE CONTRACTORS TO PROVIDE ALL LOCATIONS OF REQUIRED ACCESS TO GENERAL CONTRACTOR. GENERAL CONTRACTOR TO COORDINATE WITH ARCHITECT ON ACCESS DOOR LOCATIONS AND INSTALL ACCESS DOORS.

**KEYED WORK NOTE:**

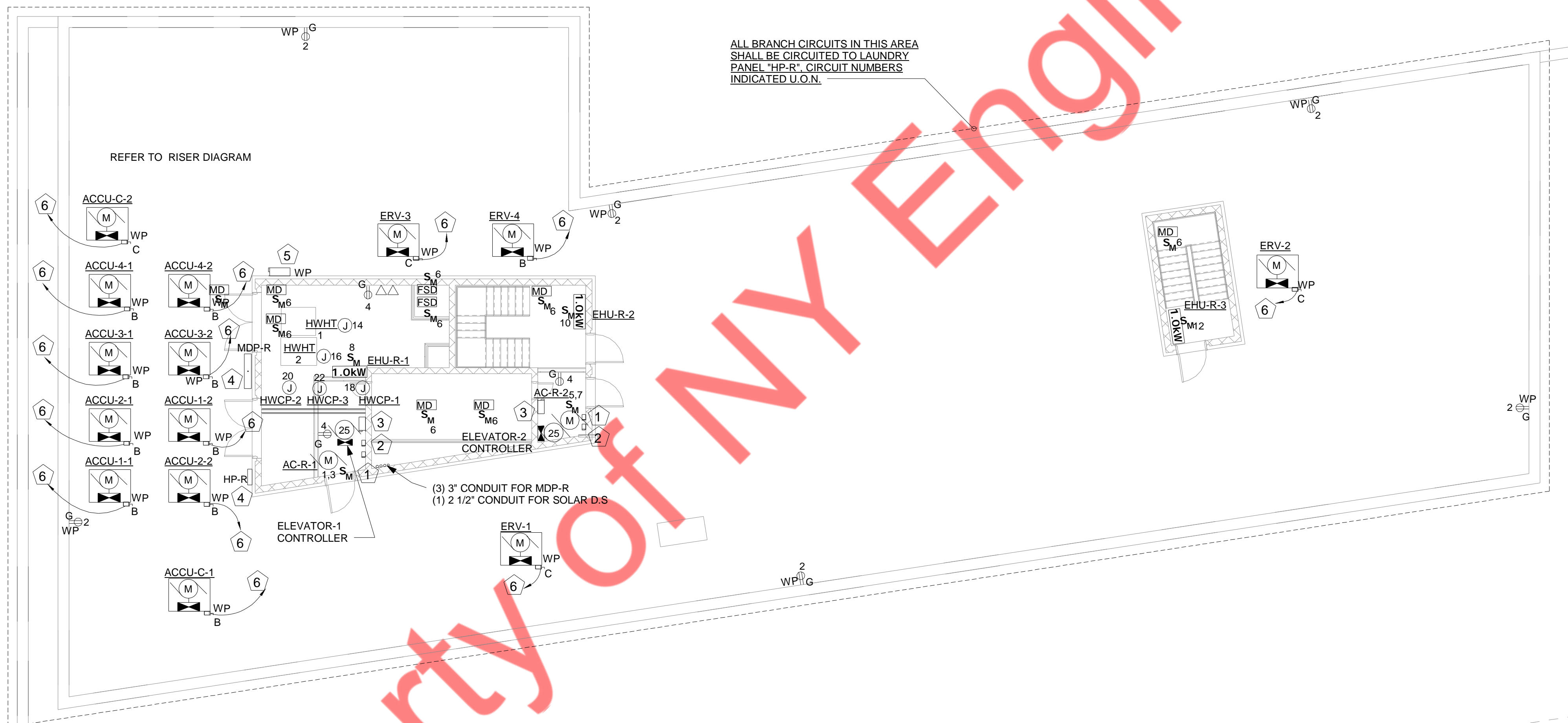
① ELECTRICAL CONTRACTOR TO COORDINATE RECEPTACLE HEIGHT WITH UFA STANDARDS AND ARCHITECT FOR UFAS APARTMENTS.

**POWER DRAWING NOTES:**

- ALL BRANCH CIRCUITS HOMERUNS ASSIGN INDICATED ON THIS PLAN SHALL BE CIRCUITED TO PANEL AS MENTIONED ON PLANS, CIRCUIT NUMBER INDICATED, U.O.N
- REFER TO DWG. E-001.00 FOR ELECTRICAL GENERAL NOTES, SYMBOL LIST & ABBREVIATIONS. E-003.00 & E-004.00 FOR ADDITIONAL ELECTRICAL SPECIFICATIONS



Property of NY Engineers



**GENERAL NOTE:**

1. TRADE CONTRACTORS TO PROVIDE ALL LOCATIONS OF REQUIRED ACCESS TO GENERAL CONTRACTOR. GENERAL CONTRACTOR TO COORDINATE WITH ARCHITECT ON ACCESS DOOR LOCATIONS AND INSTALL ACCESS DOORS.

**KEYED WORK NOTES:**

1	30AS/20AF/240V DISCONNECT SWITCH FOR ELEVATOR CAB LIGHTING
2	30AS/20AF/240V DISCONNECT SWITCH FOR ELEVATOR CAB AUX. POWER.
3	200AS/150AF/240V DISCONNECT SWITCH FOR ELEVATOR CONTROLLER
4	PROVIDE NEMA 3R ENCLOSURE FOR PANEL 'HP-R' AND 'MDP-R'
5	200AS/200AF/240V DISCONNECT SWITCH FOR SOLAR PANEL
6	REFER TO RISER DIAGRAM ON SHEET NO. E-500 FOR BREAKER SIZE AND WIRE SIZE

**POWER DRAWING NOTES:**

1. ALL BRANCH CIRCUITS HOMERUNS ASSIGN INDICATED ON THIS PLAN SHALL BE CIRCUITED TO PANEL AS MENTIONED ON PLANS, CIRCUIT NUMBER INDICATED, U.O.N
2. REFER TO DWG. E-001.00 FOR ELECTRICAL GENERAL NOTES, SYMBOL LIST & ABBREVIATIONS. E-003.00 & E-004.00 FOR ADDITIONAL ELECTRICAL SPECIFICATIONS

1 ROOF ELECTRICAL POWER PLAN  
1/8" = 1'-0"