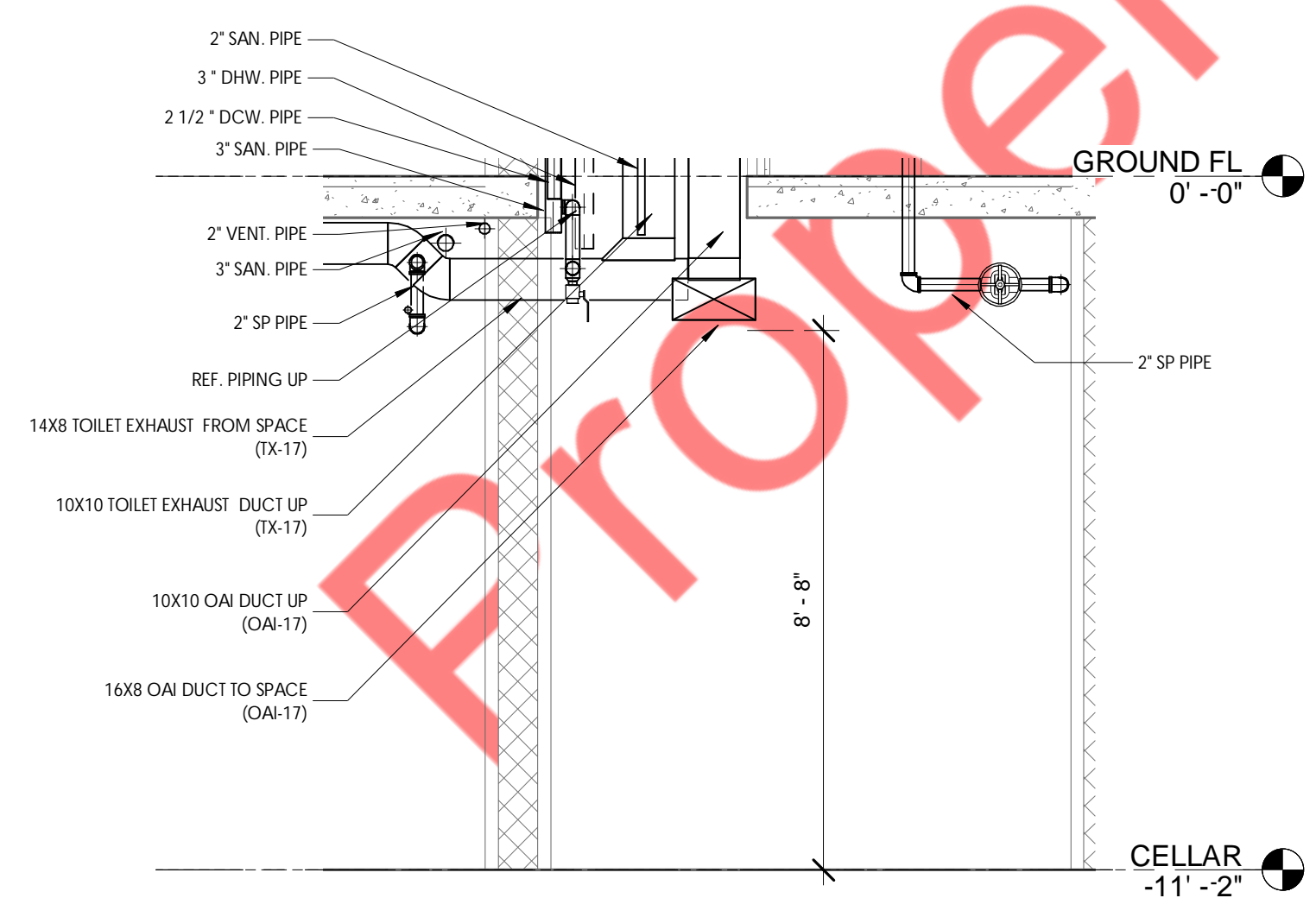


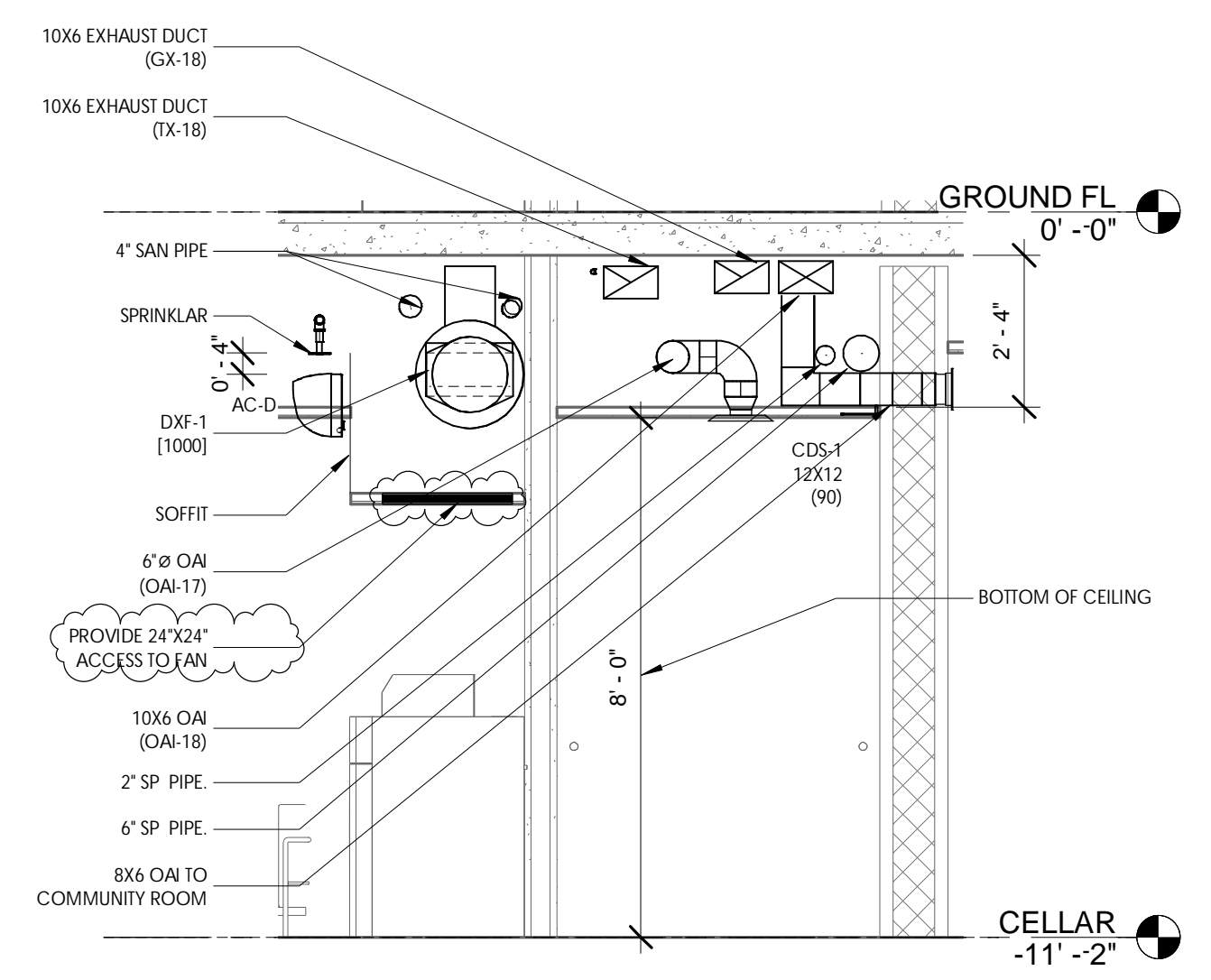


- GENERAL NOTES:**
- 1) CONNECT AC UNITS DRAIN PIPE TO THE NEAREST DRAIN RISER.
 - 2) COORDINATE ACCESS PANEL COLOR/FINISH WITH ARCHITECT.
 - 3) PROVIDE 1.5" INSULATION FOR SUPPLY & RETURN DUCTWORK FROM AC UNITS.
 - 4) OUTDOOR AIR INTAKE, EXHAUST OPENINGS, STAIRWAY AND SHAFT VENTS SHALL BE PROVIDED WITH CLASS I MOTORIZED DAMPERS. THE DAMPERS SHALL HAVE AN AIR LEAKAGE RATE NOT GREATER THAN 4 CFM/FT² OF DAMPER SURFACE AREA AT 1.0 INCH WATER GAUGE AND SHALL BE LABELED BY AN APPROVED AGENCY WHEN TESTED IN ACCORDANCE WITH AMCA 5000.
 - 5) PROVIDE 2" INSULATION FOR OUTDOOR AIR INTAKE DUCT.
 - 6) GRILLE SHALL INCLUDE INBUILD VOLUME DAMPER.
 - 7) RUN REFRIGERANT AND CONDENSING PIPE TIGHT TO CEILING.
 - 8) COORDINATE ALL GRILLE AND ACCESS DOOR LOCATION WITH ARCHITECT.
 - 9) REFER ARCHITECTURAL DRAWINGS (A120, A121, A122, A123, A124) FOR LOCATION OF SHAFT RISERS.
 - 10) RCL CALCULATION FOR PACKAGE RM:
 TOTAL VOLUME OF THE SMALLEST ROOM = 850 CUBIC FEET.
 TOTAL REFRIGERANT = REFRIGERANT IN CONDENSOR + REFRIGERANT IN PIPING.
 RCL = 76.4 / 850 = 0.089 LBS PER CUBIC FEET.
 RCL(0.09) - RCL(AS PER CODE 0.025)
 - 11) TRADE CONTRACTORS TO PROVIDE ALL LOCATIONS OF REQUIRED ACCESS TO GENERAL CONTRACTOR. GENERAL CONTRACTOR TO COORDINATE WITH ARCHITECT ON ACCESS DOOR LOCATIONS AND INSTALL ACCESS DOORS.

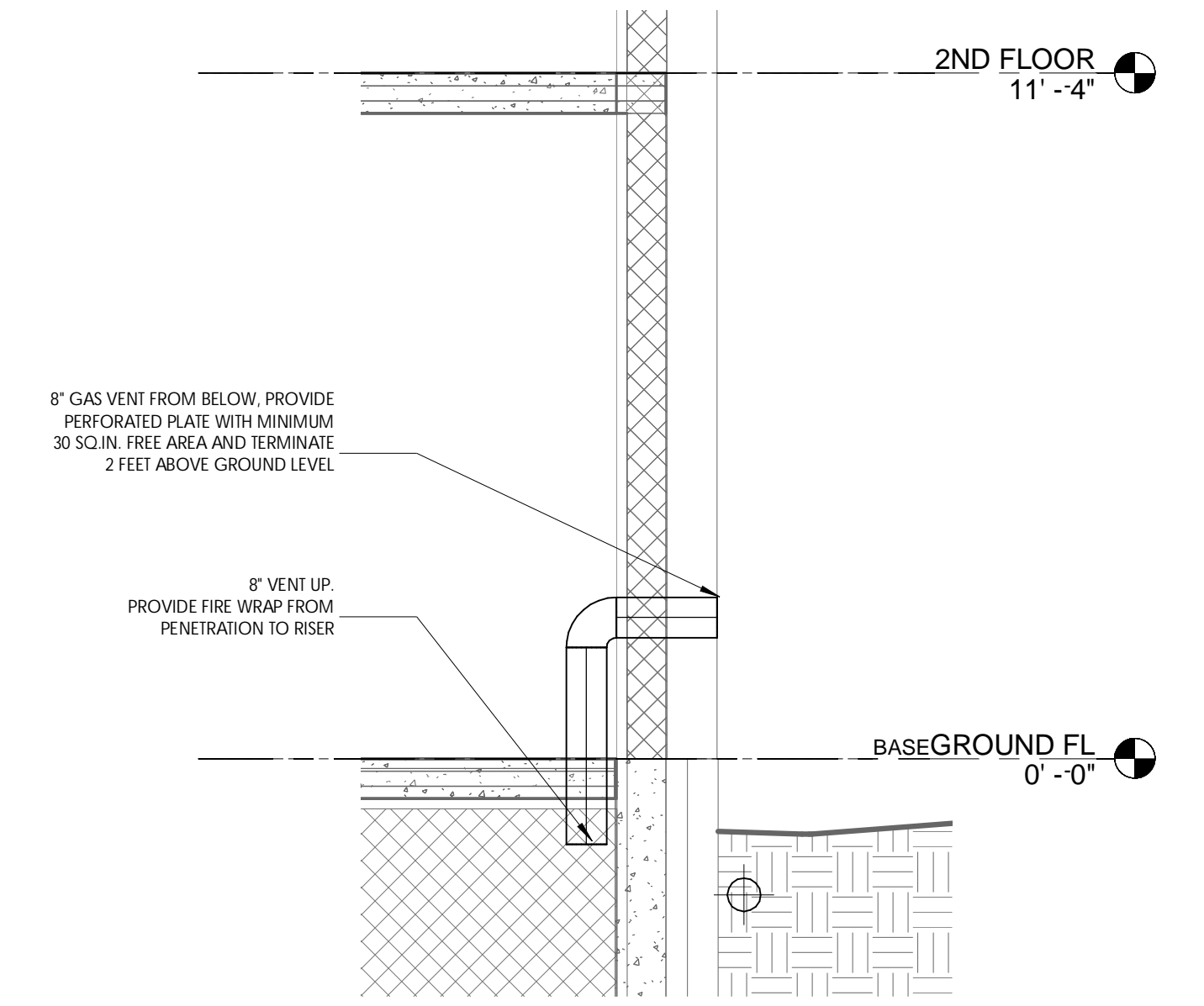
1 CELLAR MECHANICAL PLAN
1/8" = 1'-0"



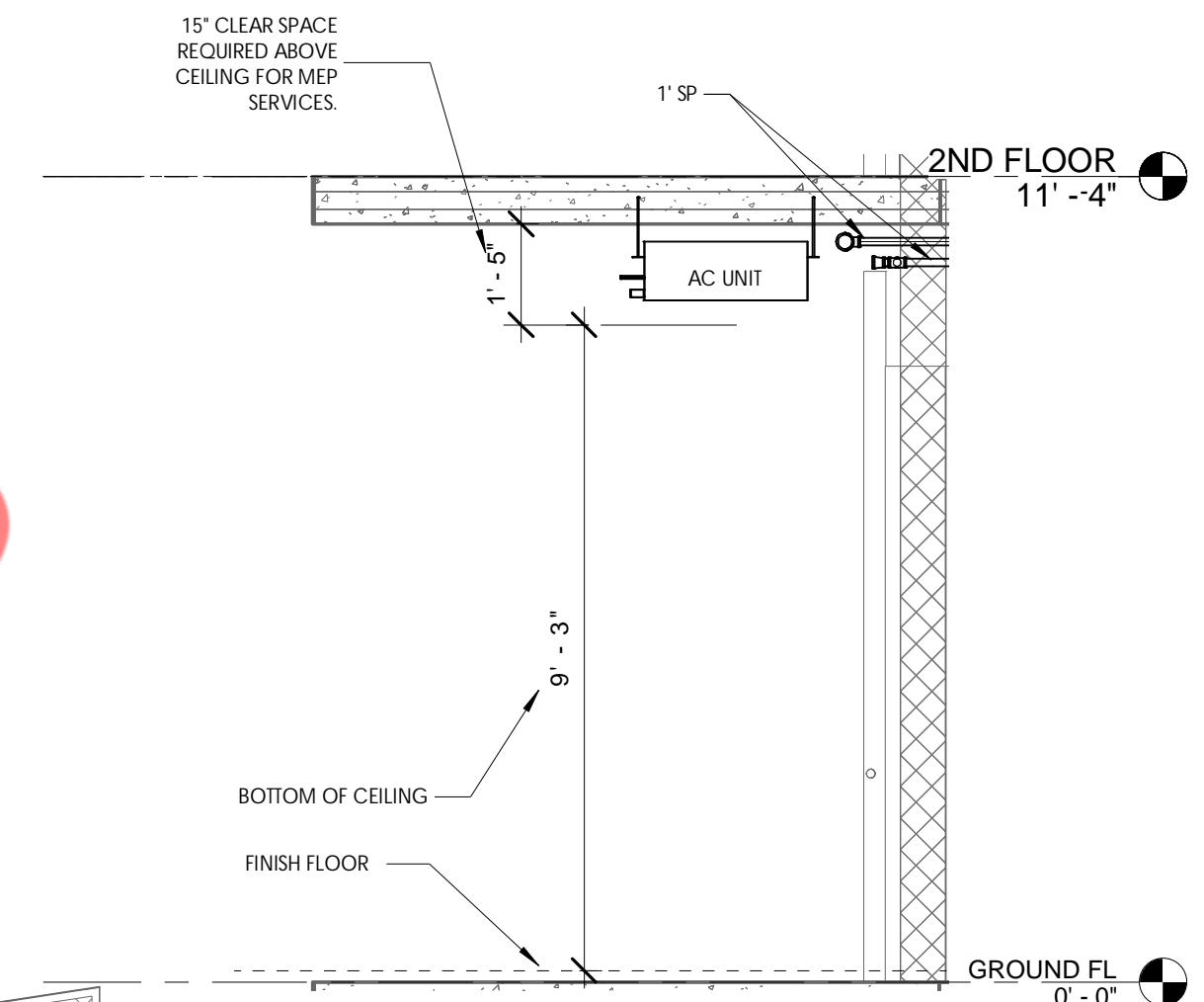
3 CELLAR FLOOR TRASH ROOM
3/8" = 1'-0"



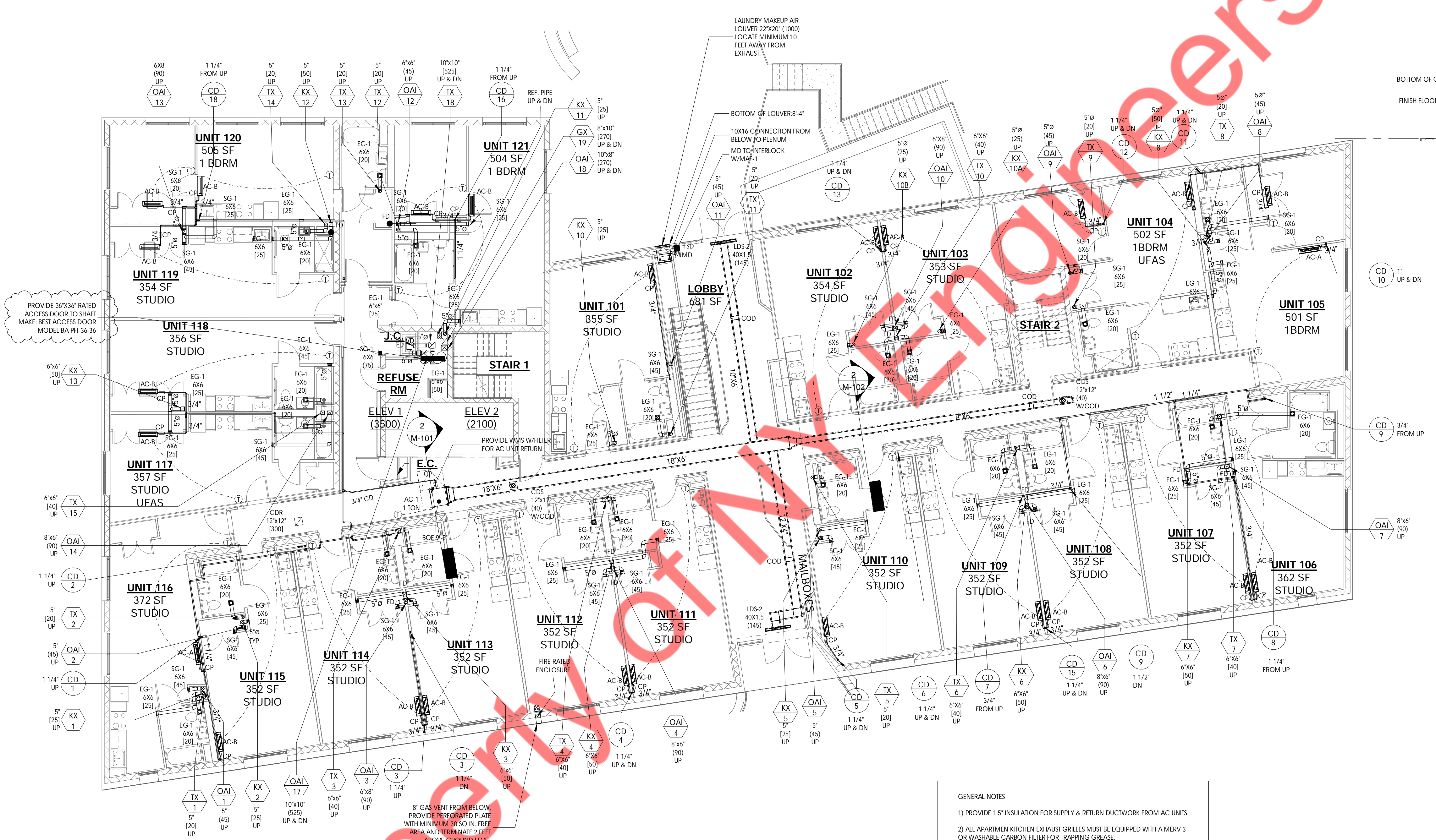
2 CELLAR FLOOR CORRIDOR
3/8" = 1'-0"



4 CELLAR FLOOR GAS VENT SECTION
3/8" = 1'-0"



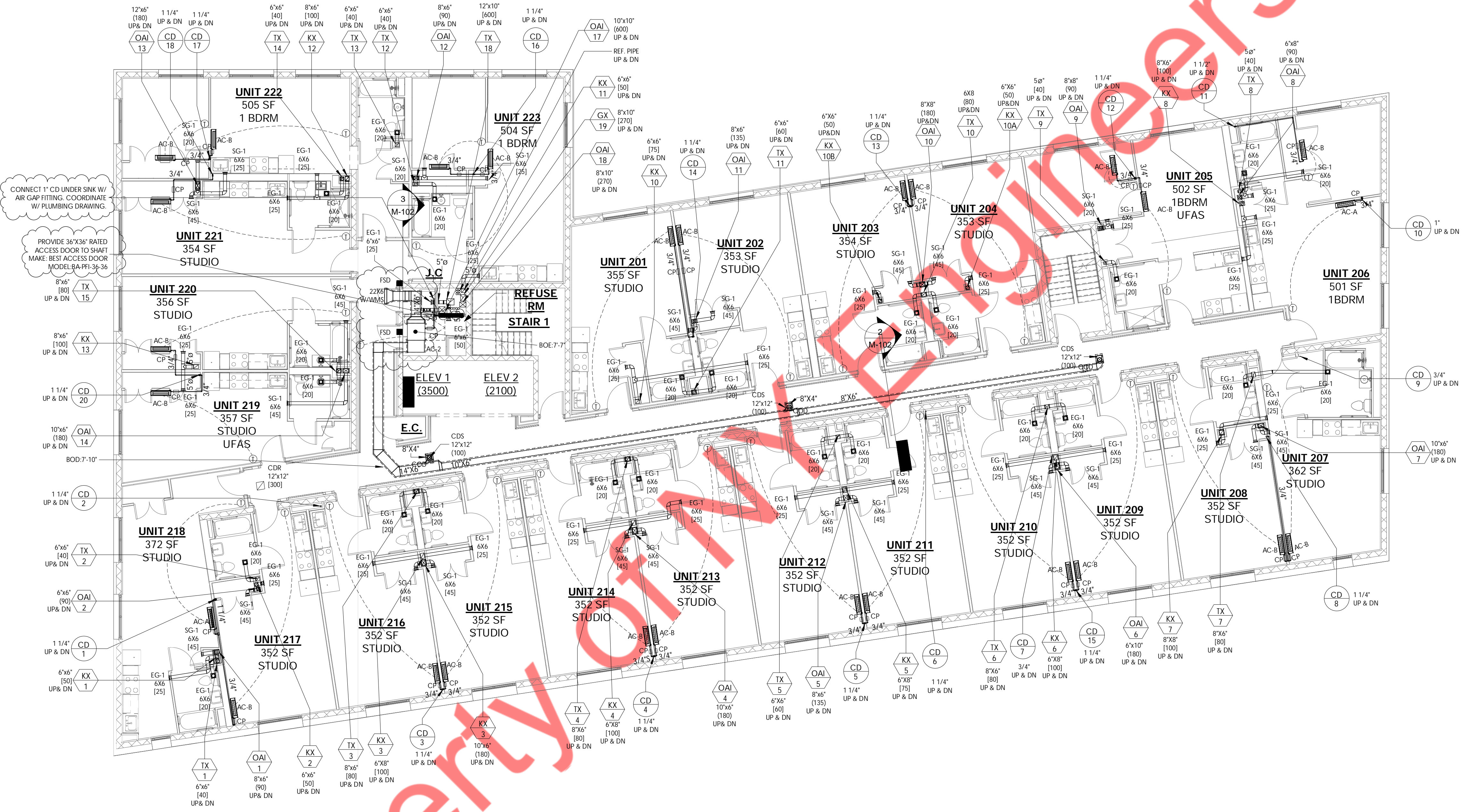
2) GROUND FLOOR CORRIDOR
3/8" = 1'-0"



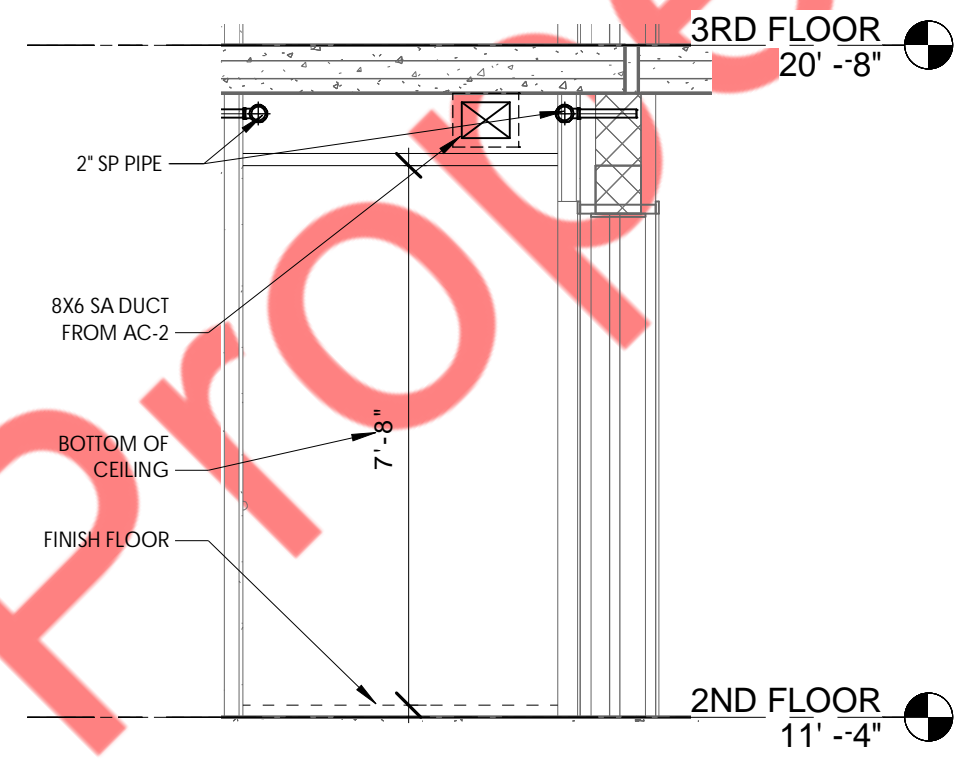
1) GROUND FLOOR MECHANICAL PLAN
1/8" = 1'-0"

- GENERAL NOTES
- 1) PROVIDE 1.5" INSULATION FOR SUPPLY & RETURN DUCTWORK FROM AC UNITS.
 - 2) ALL APARTMENT KITCHEN EXHAUST GRILLES MUST BE EQUIPPED WITH A MERV 3 OR WASHABLE CARBON FILTER FOR TRAPPING GREASE.
 - 3) GRILLE SHALL INCLUDE INBUILD VOLUME DAMPER.
 - 4) RUN REFRIGERANT AND CONDENSING PIPE TIGHT TO CEILING.
 - 5) COORDINATE ALL GRILLE AND ACCESS DOOR LOCATION WITH ARCHITECT.
 - 6) COORDINATE ACCESS PANEL COLOR/FINISH WITH ARCHITECT.
 - 7) OUTDOOR AIR INTAKE EXHAUST OPENINGS STAIRWAY AND SHAFT VENT SHALL BE PROVIDED WITH CLASS 1 MOTORIZED DAMPERS. THE DAMPERS SHALL HAVE AIR LEAKAGE RATE NOT GREATER THAN 4CFM/FT² OF DAMPER SURFACE AREA AT 1.0 INCH WATER GAUGE AND SHALL BE LABELED BY AN APPROVED AGENCY WHEN TESTED IN ACCORDANCE WITH AMCA 5000.
 - 8) REFER RISER DIAGRAM FOR KITCHEN, TOILET AND OUTDOOR AIR BRANCH DUCT SIZES.
 - 9) REFER ARCHITECTURAL DRAWINGS (A120, A121, A122, A123, A124) FOR LOCATION OF SHAFT RISERS.
 - 10) CONDENSATE PUMP FOR ALL WALL MOUNTED AC UNIT SHALL BE MOUNTED INSIDE THE CASING BEHIND AC UNIT. REFER DETAIL 8 ON SHEET M-504.00.
 - 11) TRADE CONTRACTORS TO PROVIDE ALL LOCATIONS OF REQUIRED ACCESS TO GENERAL CONTRACTOR. GENERAL CONTRACTOR TO COORDINATE WITH ARCHITECT ON ACCESS DOOR LOCATIONS AND INSTALL ACCESS DOORS.

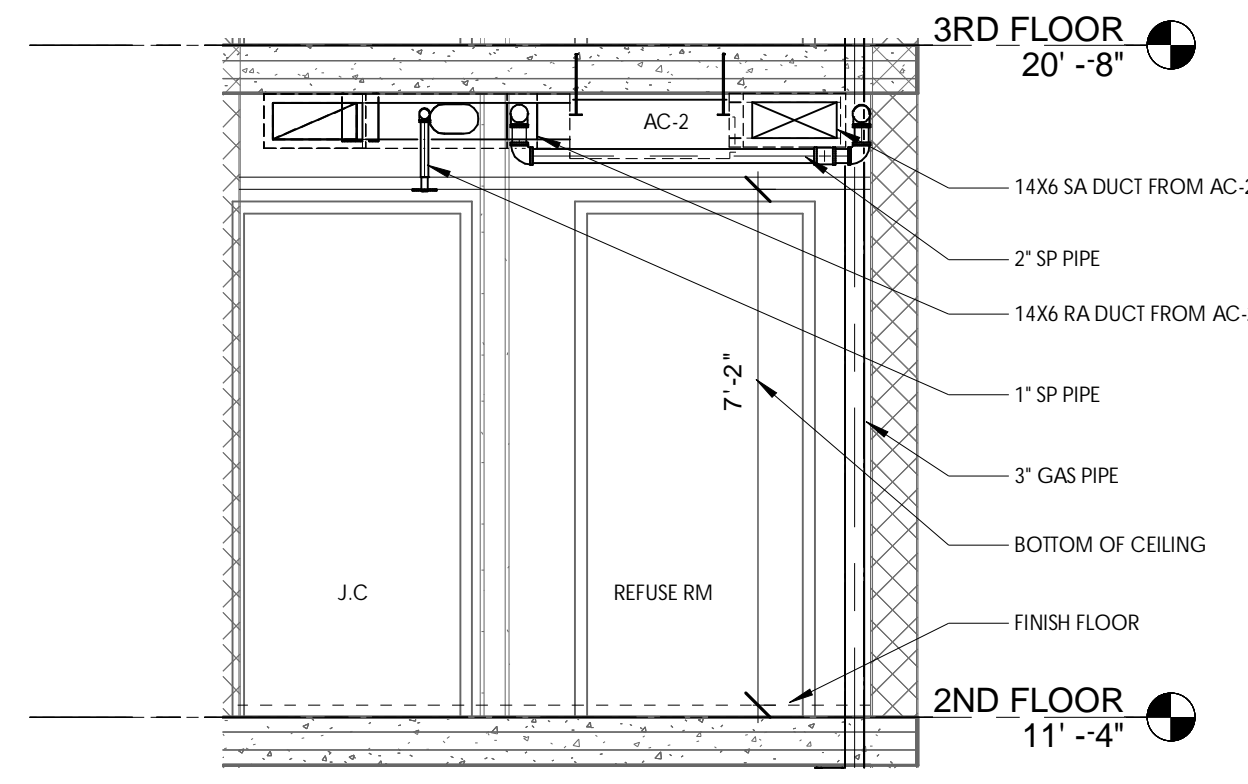
Proprietary



1 2ND FLOOR MECHANICAL PLAN
1/8" = 1'-0"

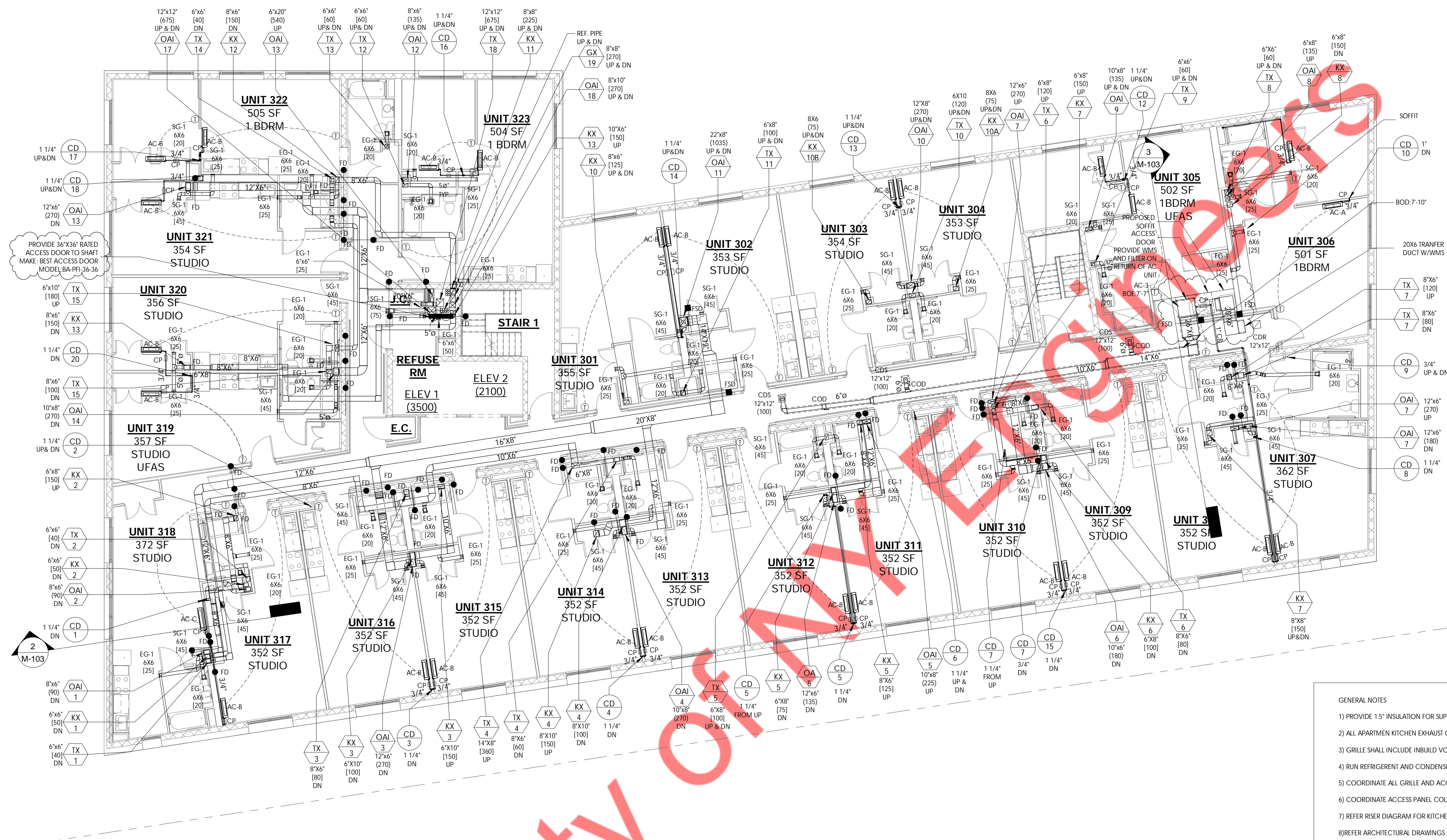


2 2ND FLOOR CORRIDOR
3/8" = 1'-0"



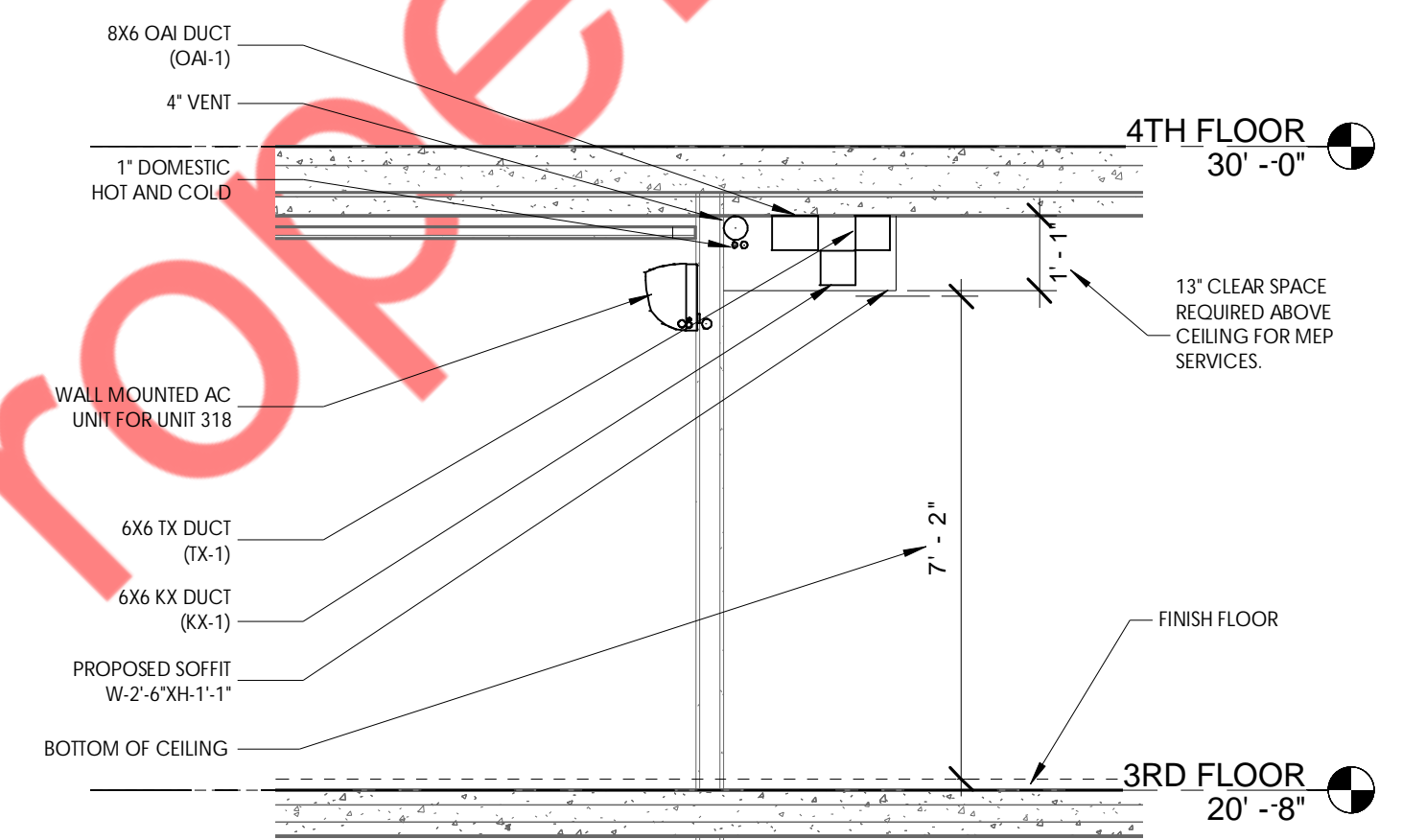
3 2ND FLOOR REFUSE RM AC UNIT
3/8" = 1'-0"

- GENERAL NOTES
- 1) PROVIDE 1.5" INSULATION FOR SUPPLY & RETURN DUCTWORK FROM AC UNITS.
 - 2) ALL APARTMENT KITCHEN EXHAUST GRILLES MUST BE EQUIPPED WITH A MERV 3 OR WASHABLE CARBON FILTER FOR TRAPPING GREASE.
 - 3) GRILLE SHALL INCLUDE INBUILT VOLUME DAMPER.
 - 4) RUN REFRIGERANT AND CONDENSING PIPE TIGHT TO CEILING.
 - 5) COORDINATE ALL GRILLE AND ACCESS DOOR LOCATION WITH ARCHITECT.
 - 6) COORDINATE ACCESS PANEL COLOR/FINISH WITH ARCHITECT.
 - 7) REFER RISER DIAGRAM FOR KITCHEN, TOILET AND OUTDOOR AIR BRANCH DUCT SIZES.
 - 8) REFER ARCHITECTURAL DRAWINGS (A120, A121, A122, A123 A124) FOR LOCATION OF SHAFT RISERS.
 - 10) CONDENSATE PUMP FOR ALL WALL MOUNTED AC UNIT SHALL BE MOUNTED INSIDE THE CASING BEHIND AC UNIT. REFER DETAIL 8 ON SHEET M-504.00
 - 11) TRADE CONTRACTORS TO PROVIDE ALL LOCATIONS OF REQUIRED ACCESS TO GENERAL CONTRACTOR. GENERAL CONTRACTOR TO COORDINATE WITH ARCHITECT ON ACCESS DOOR LOCATIONS AND INSTALL ACCESS DOORS.

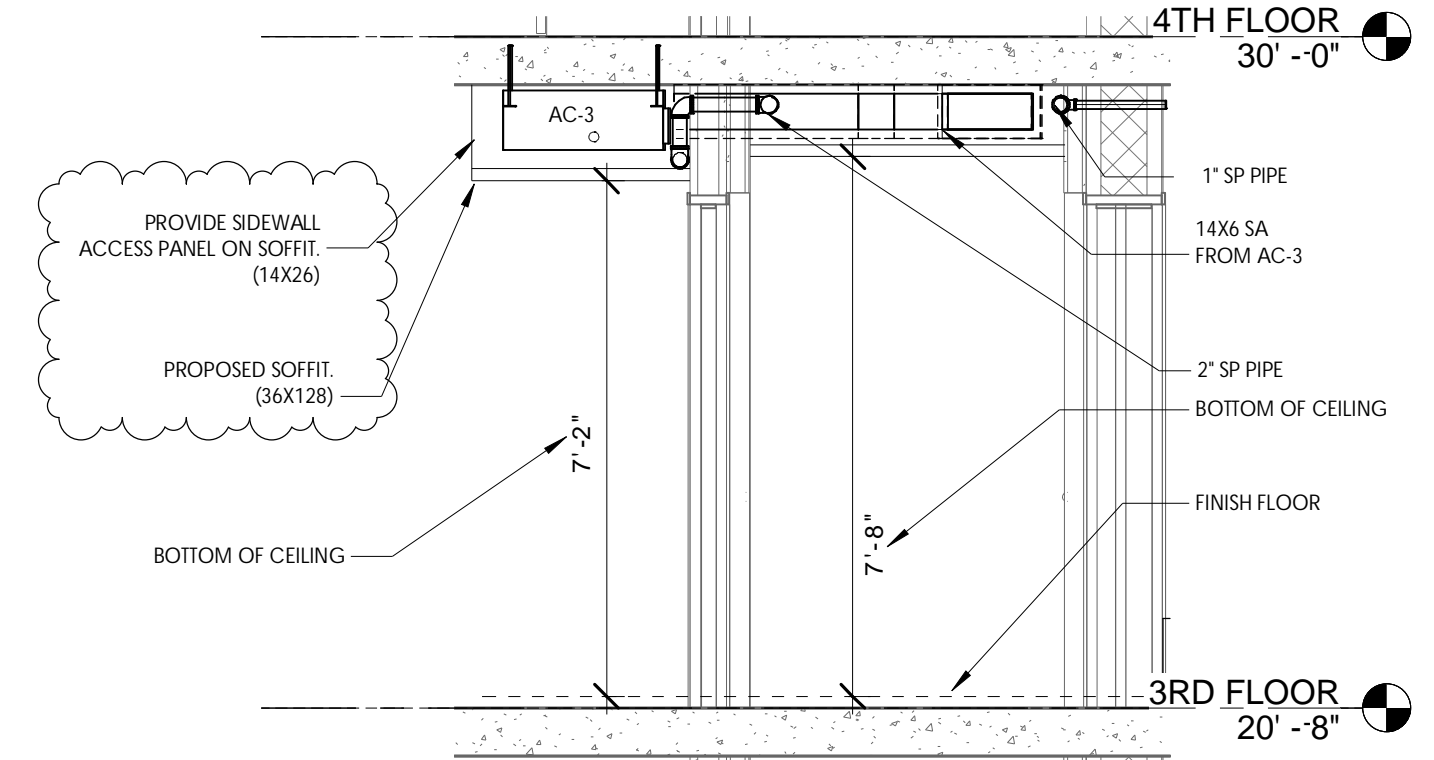


- GENERAL NOTES
- 1) PROVIDE 1.5" INSULATION FOR SUPPLY & RETURN DUCTWORK FROM AC UNITS.
 - 2) ALL APARTMENT KITCHEN EXHAUST GRILLES MUST BE EQUIPPED WITH A MERV 3 OR WASHABLE CARBON FILTER FOR TRAPPING GREASE.
 - 3) GRILLE SHALL INCLUDE INBUILT VOLUME DAMPER.
 - 4) RUN REFRIGERANT AND CONDENSING PIPE TIGHT TO CEILING.
 - 5) COORDINATE ALL GRILLE AND ACCESS DOOR LOCATION WITH ARCHITECT.
 - 6) COORDINATE ACCESS PANEL COLOR/FINISH WITH ARCHITECT.
 - 7) REFER RISER DIAGRAM FOR KITCHEN, TOILET AND OUTDOOR AIR BRANCH DUCT SIZES.
 - 8) REFER ARCHITECTURAL DRAWINGS (A120, A121, A122, A123, A124) FOR LOCATION OF SHAFT RISERS.
 - 9) CONDENSATE PUMP FOR ALL WALL MOUNTED AC UNIT SHALL BE MOUNTED INSIDE THE CASING BEHIND AC UNIT. REFER DETAIL 8 ON SHEET M-504.00.
 - 11) TRADE CONTRACTORS TO PROVIDE ALL LOCATIONS OF REQUIRED ACCESS TO GENERAL CONTRACTOR. GENERAL CONTRACTOR TO COORDINATE WITH ARCHITECT ON ACCESS DOOR LOCATIONS AND INSTALL ACCESS DOORS.

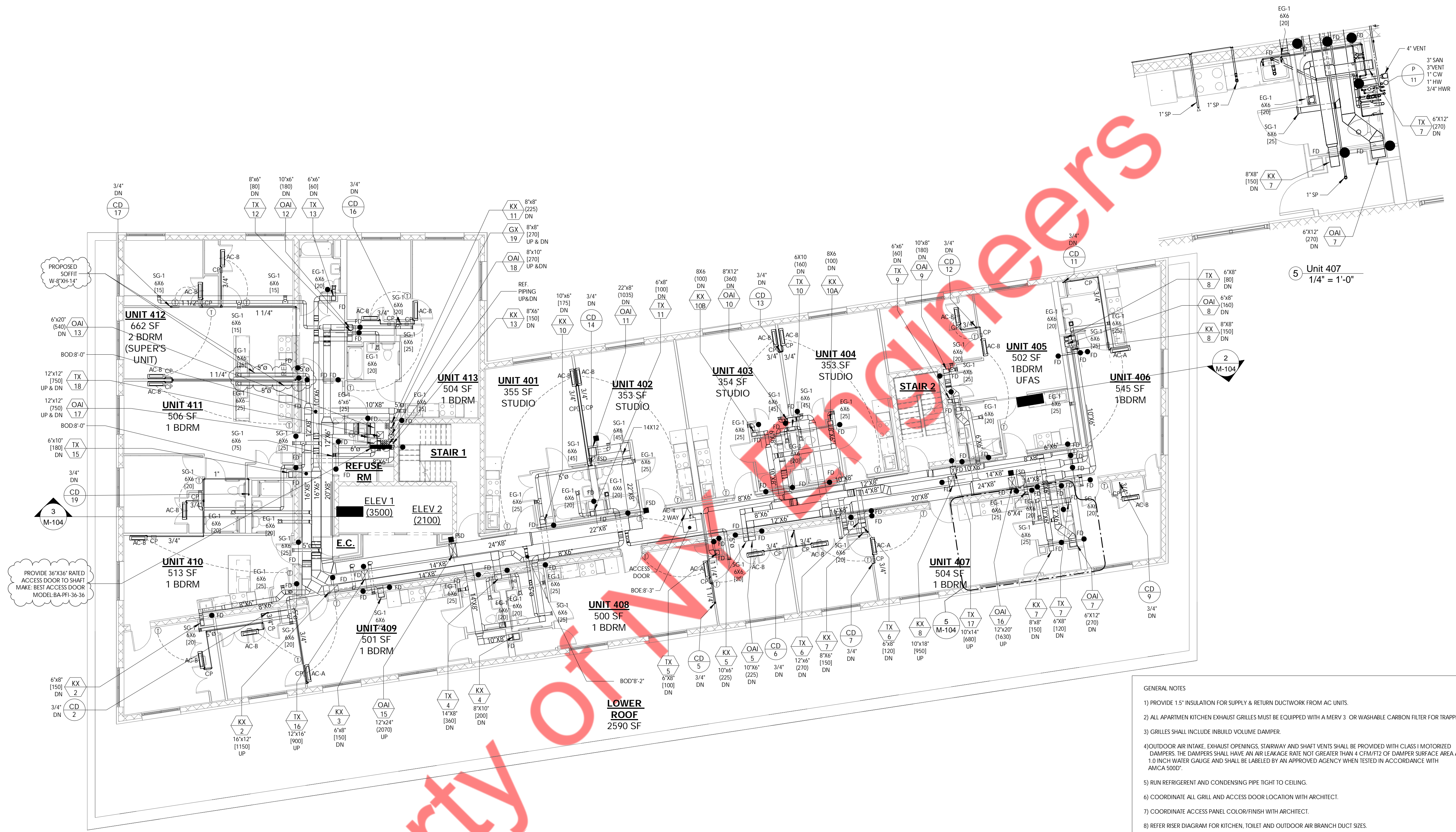
① 3RD FLOOR MECHANICAL PLAN
1/8" = 1'-0"



② 3RD FLOOR UNIT 318 & 317
3/8" = 1'-0"

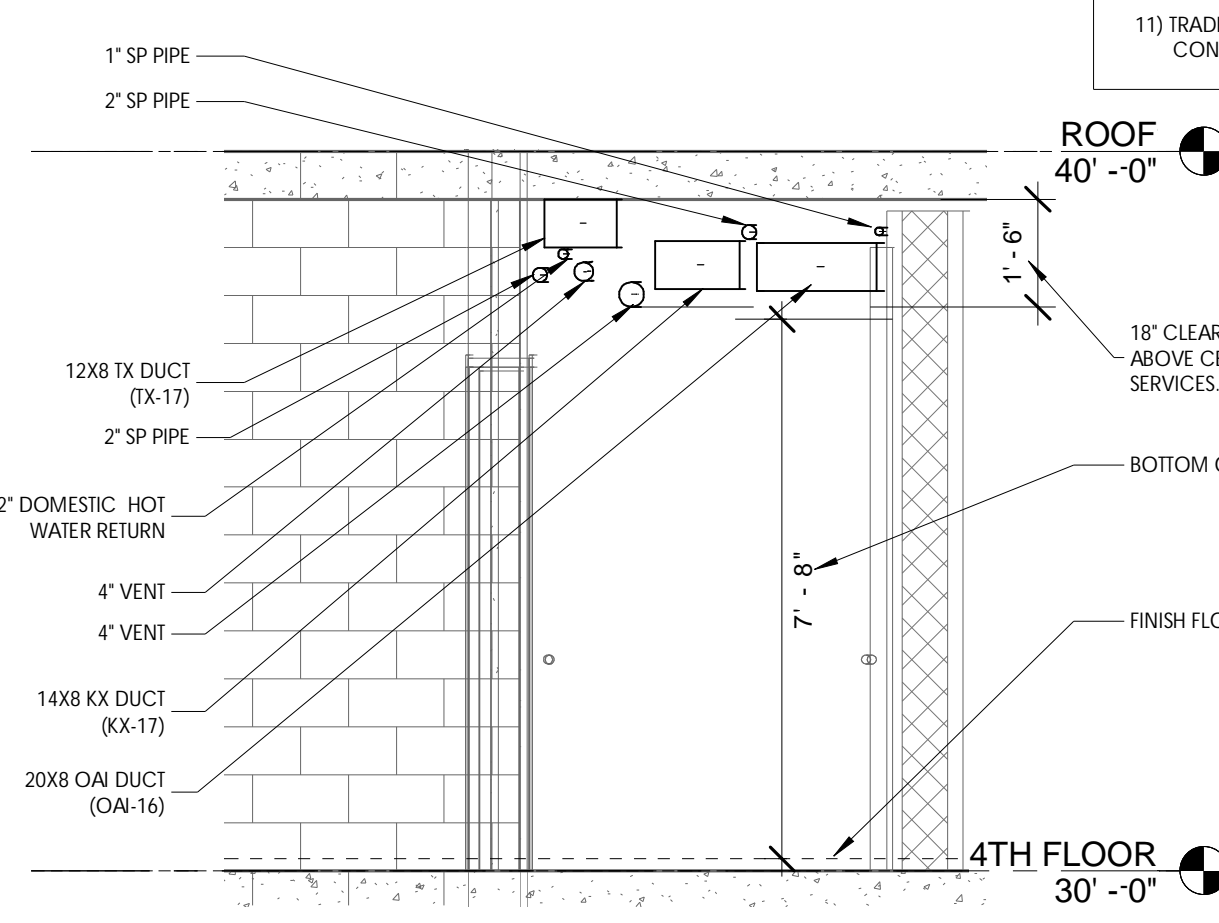
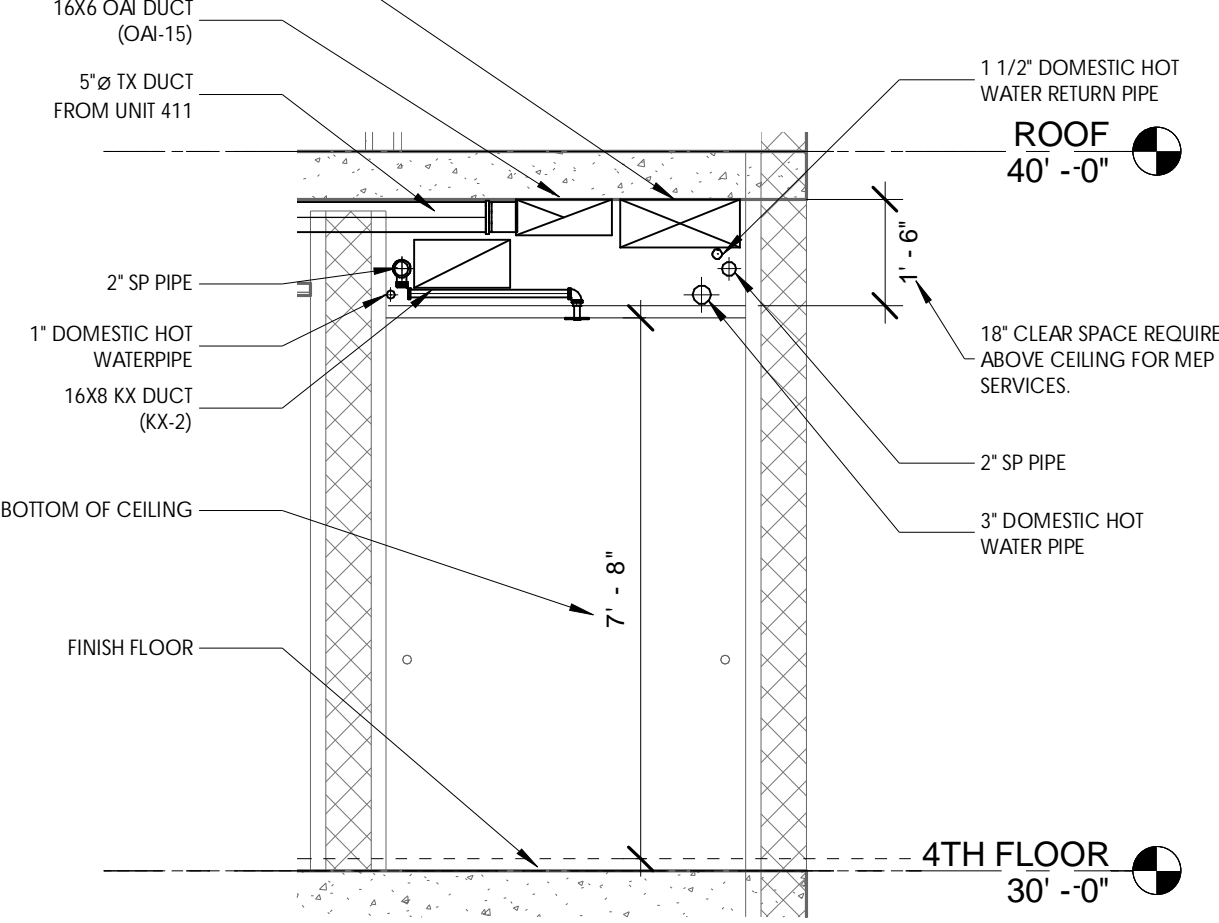
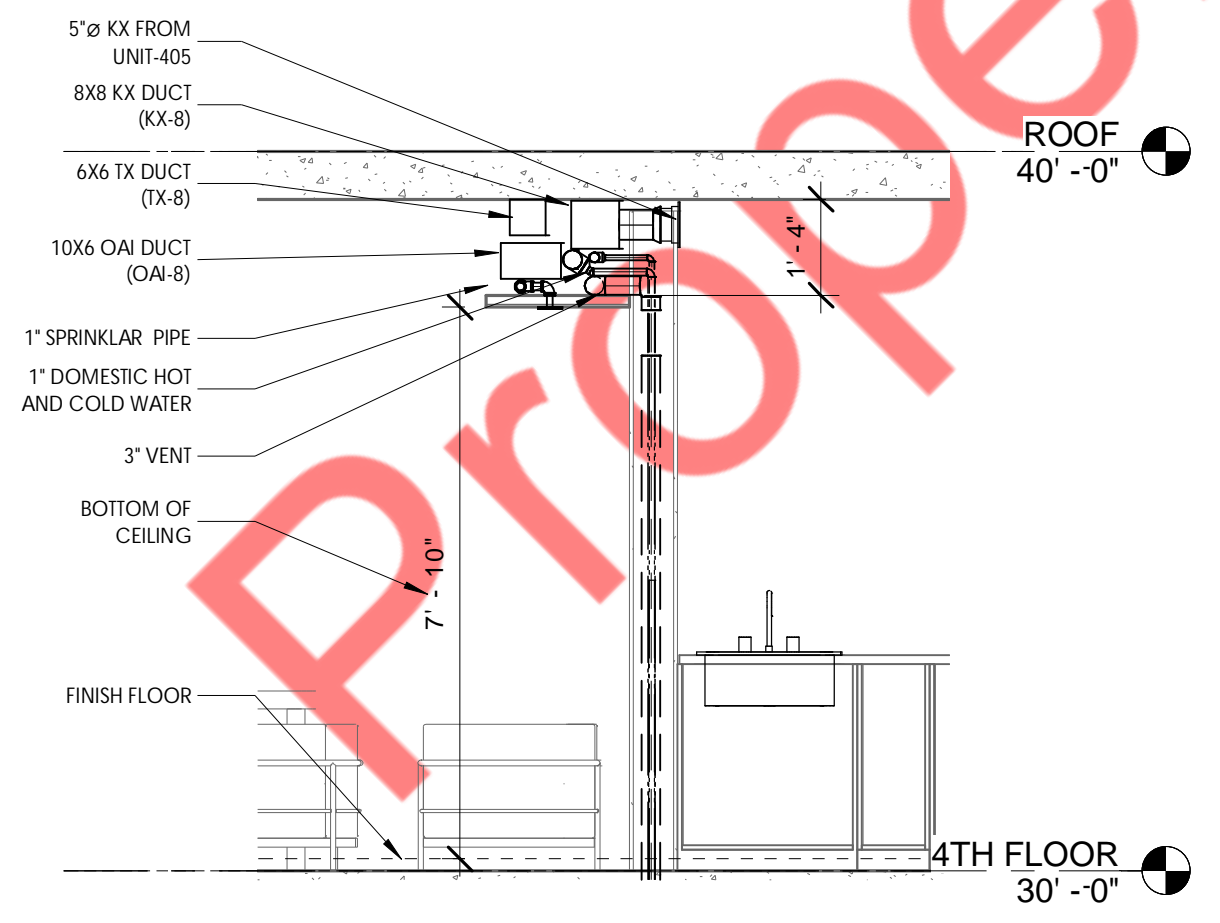


③ 3RD FLOOR CORRIDOR
3/8" = 1'-0"



- GENERAL NOTES**
- 1) PROVIDE 1.5" INSULATION FOR SUPPLY & RETURN DUCTWORK FROM AC UNITS.
 - 2) ALL APARTMENT KITCHEN EXHAUST GRILLES MUST BE EQUIPPED WITH A MERV 3 OR WASHABLE CARBON FILTER FOR TRAPPING GREASE.
 - 3) GRILLES SHALL INCLUDE INBUILD VOLUME DAMPER.
 - 4) OUTDOOR AIR INTAKE, EXHAUST OPENINGS, STAIRWAY AND SHAFT VENTS SHALL BE PROVIDED WITH CLASS 1 MOTORIZED DAMPERS. THE DAMPERS SHALL HAVE AN AIR LEAKAGE RATE NOT GREATER THAN 4 CFM/FT² OF DAMPER SURFACE AREA AT 1.0 INCH WATER GAUGE AND SHALL BE LABELED BY AN APPROVED AGENCY WHEN TESTED IN ACCORDANCE WITH AMCA 500D.
 - 5) RUN REFRIGERANT AND CONDENSING PIPE TIGHT TO CEILING.
 - 6) COORDINATE ALL GRILL AND ACCESS DOOR LOCATION WITH ARCHITECT.
 - 7) COORDINATE ACCESS PANEL COLOR/FINISH WITH ARCHITECT.
 - 8) REFER RISER DIAGRAM FOR KITCHEN, TOILET AND OUTDOOR AIR BRANCH DUCT SIZES.
 - 9) REFER ARCHITECTURAL DRAWINGS (A120, A121, A122, A123, A124) FOR LOCATION OF SHAFT RISERS.
 - 10) CONDENSATE PUMP FOR ALL WALL MOUNTED AC UNIT SHALL BE MOUNTED INSIDE THE CASING BEHIND AC UNIT. REFER DETAIL 8 ON SHEET M-504.00
 - 11) TRADE CONTRACTORS TO PROVIDE ALL LOCATIONS OF REQUIRED ACCESS TO GENERAL CONTRACTOR. GENERAL CONTRACTOR TO COORDINATE WITH ARCHITECT ON ACCESS DOOR LOCATIONS AND INSTALL ACCESS DOORS.

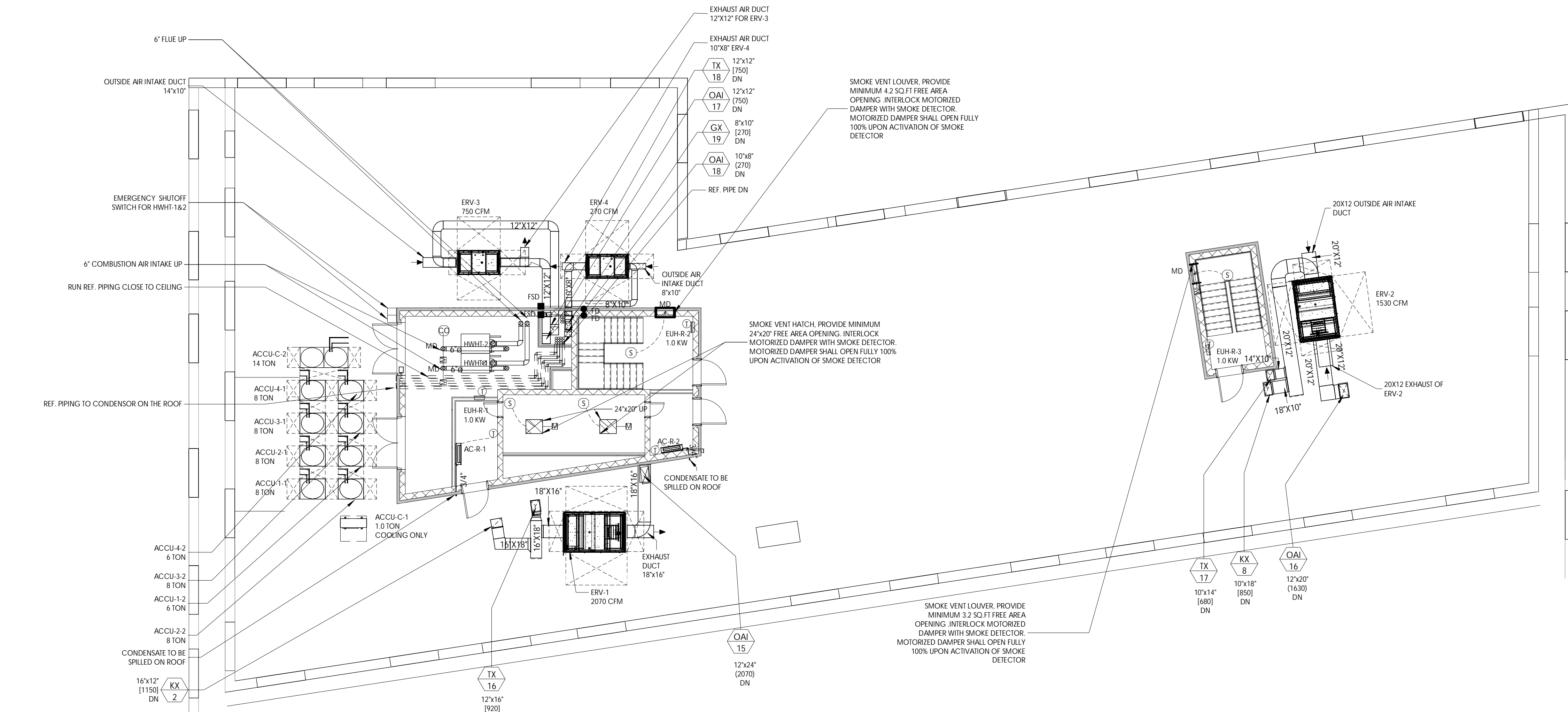
1 4TH FLOOR MECHANICAL PLAN
1/8" = 1'-0"



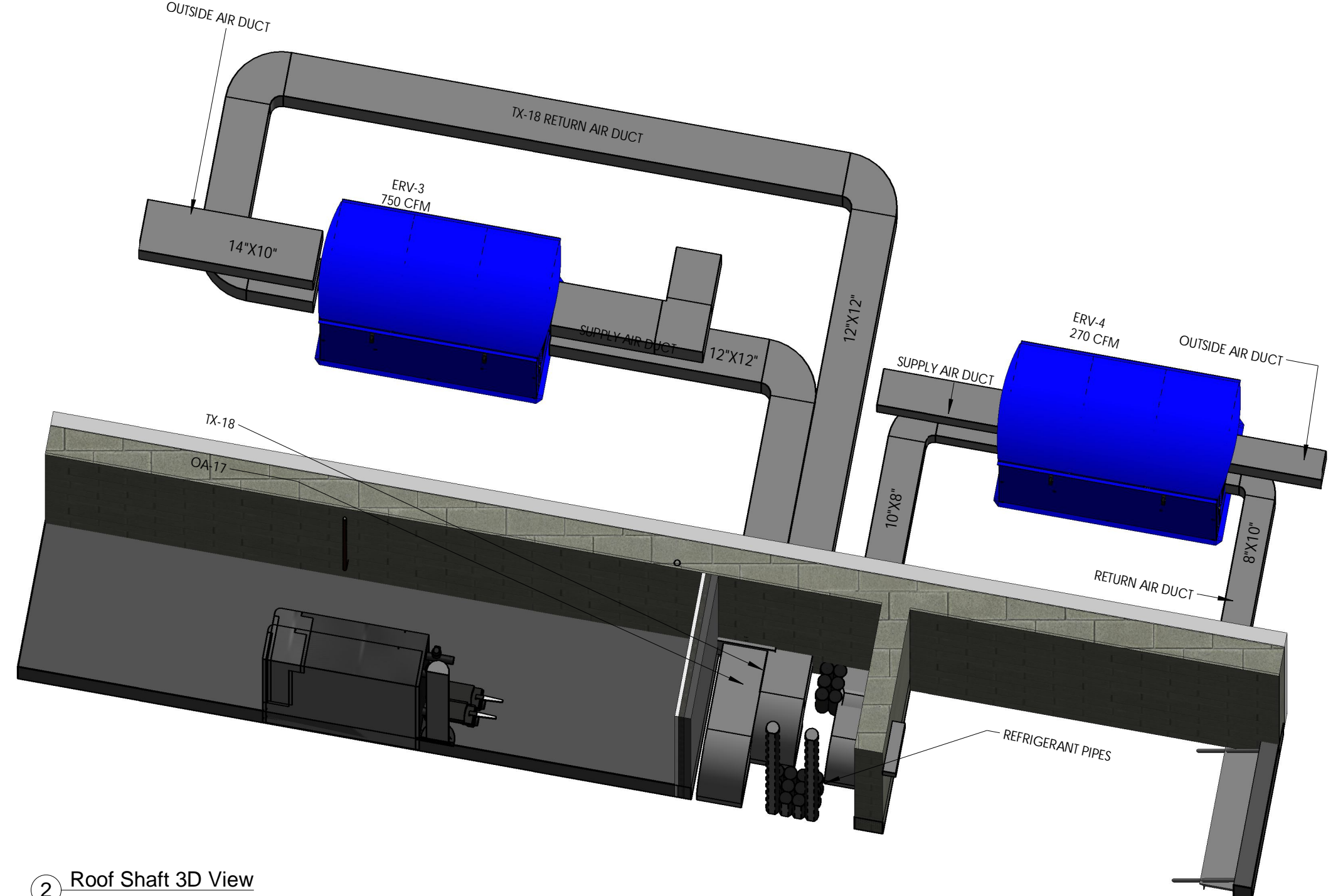
2 4TH FLOOR UNIT-406
3/8" = 1'-0"

3 4TH FLOOR CORRIDOR-1
3/8" = 1'-0"

4 4TH FLOOR CORRIDOR-2
3/8" = 1'-0"

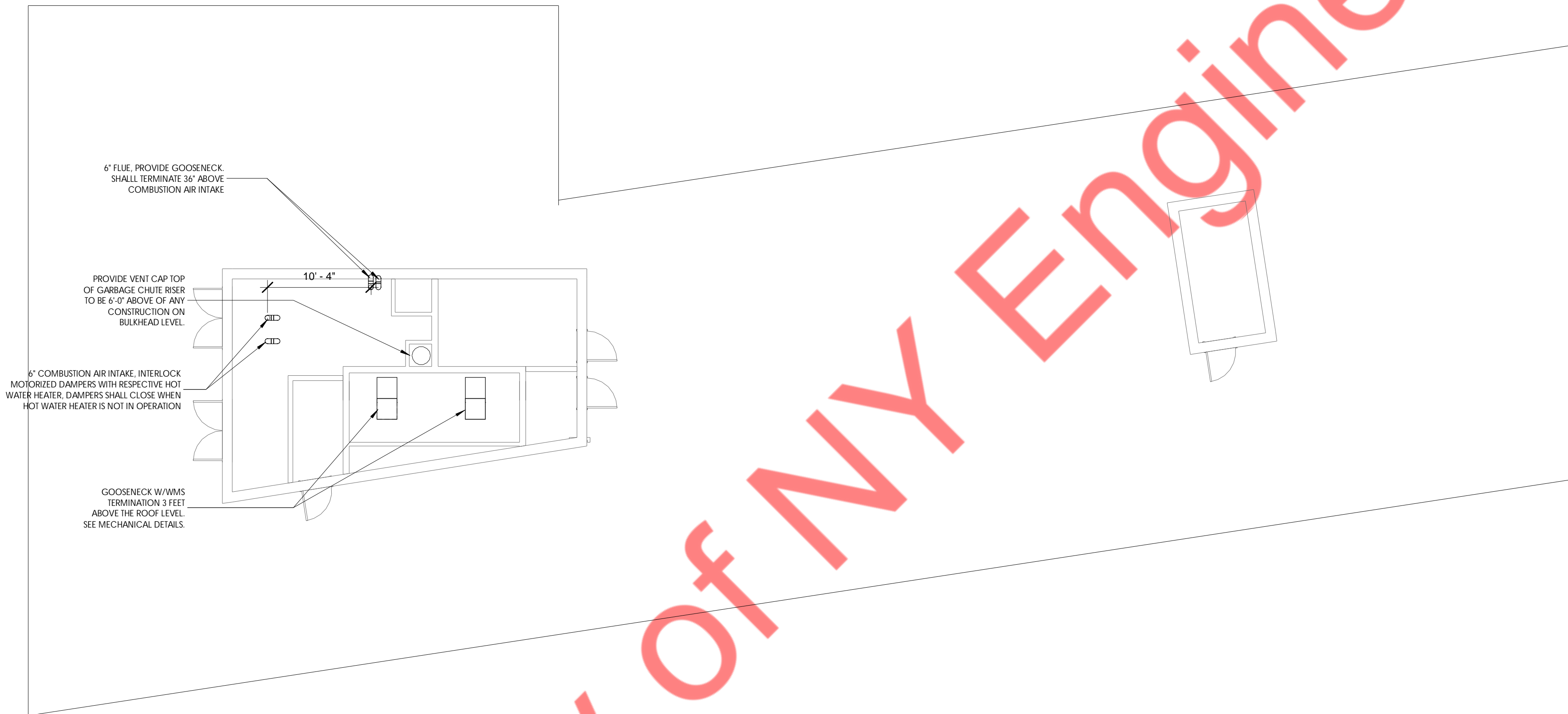


1 ROOF MECHANICAL PLAN
1/8" = 1'-0"



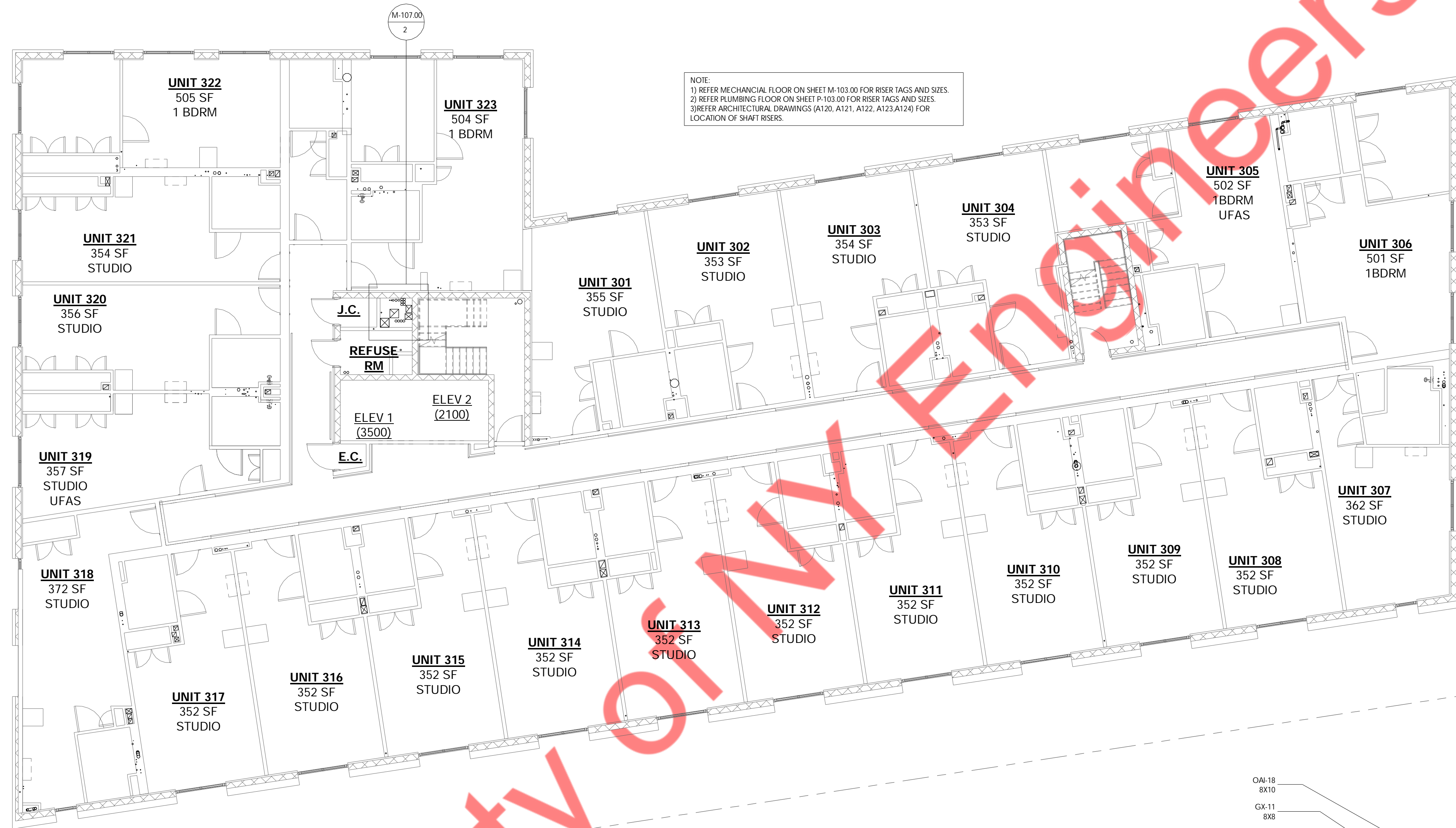
2 Roof Shaft 3D View

- GENERAL NOTES:
- 1) ALL EXHAUST SHALL BE LOCATED MINIMUM 3 FEET FROM LOT LINE.
 - 2) AIR CONDITIONER UNIT AND ERV SHALL NOT PRODUCE NOISE LEVELS IN EXCESS OF 42 DECIBELS FOR A SINGLE AIR CIRCULATING DEVICE AND 45 DECIBELS FOR THE CUMULATIVE NOISE LEVEL OF MULTIPLE AIR CIRCULATING DEVICES AS MEASURED 3 FEET FROM THE NOISE SOURCE AT AN OPEN DOOR OR WINDOW OF A NEARBY RESIDENCE.
 - 3) PROVIDE UV PROTECTED & WEATHER PROOF COATING FOR ALL EXTERIOR DUCTWORK AND PIPING INSULATION AND DUCT CONNECTORS
 - 4) AIR INTAKE SHALL BE LOCATED 10 FEET AWAY FROM LOTLINE AND ANY EXHAUST.
 - 5) COORDINATE HEAT LOAD REJECTION WITH ELEVATOR CONSULTANT. NYE DESIGNED BASED ON 12,000 BTUS/HR.
 - 6) PROVIDE 2" INSULATION FOR FOR ALL OUTSIDE AIR DUCTS.



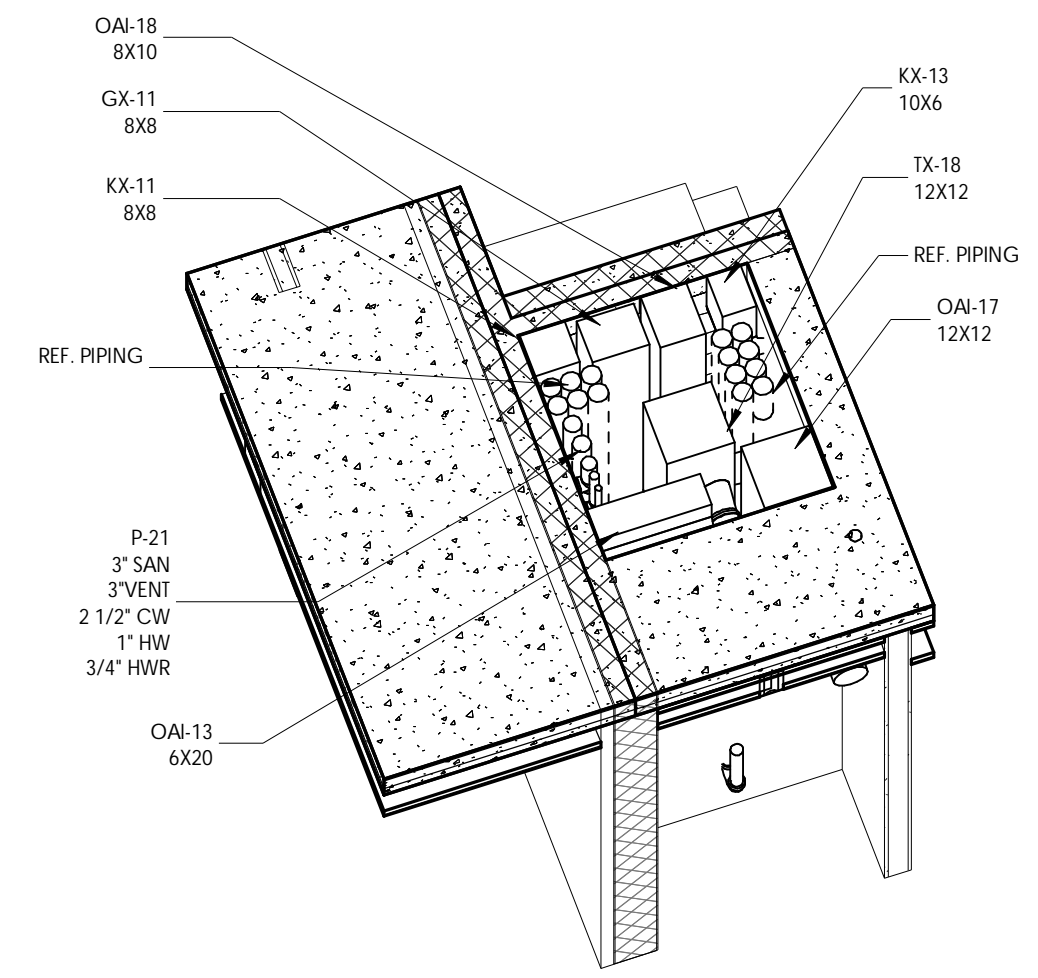
① BULKHEAD MECHANICAL PLAN
1/8" = 1'-0"

Property of NY Engineers



NOTE:
1) REFER MECHANICAL FLOOR ON SHEET M-103.00 FOR RISER TAGS AND SIZES.
2) REFER PLUMBING FLOOR ON SHEET P-103.00 FOR RISER TAGS AND SIZES.
3) REFER ARCHITECTURAL DRAWINGS (A120, A121, A122, A123, A124) FOR LOCATION OF SHAFT RISERS.

① TYPICAL FLOOR SHAFT COORDINATION
1/8" = 1'-0"



② SHAFT-1

Property of MVE Engineers