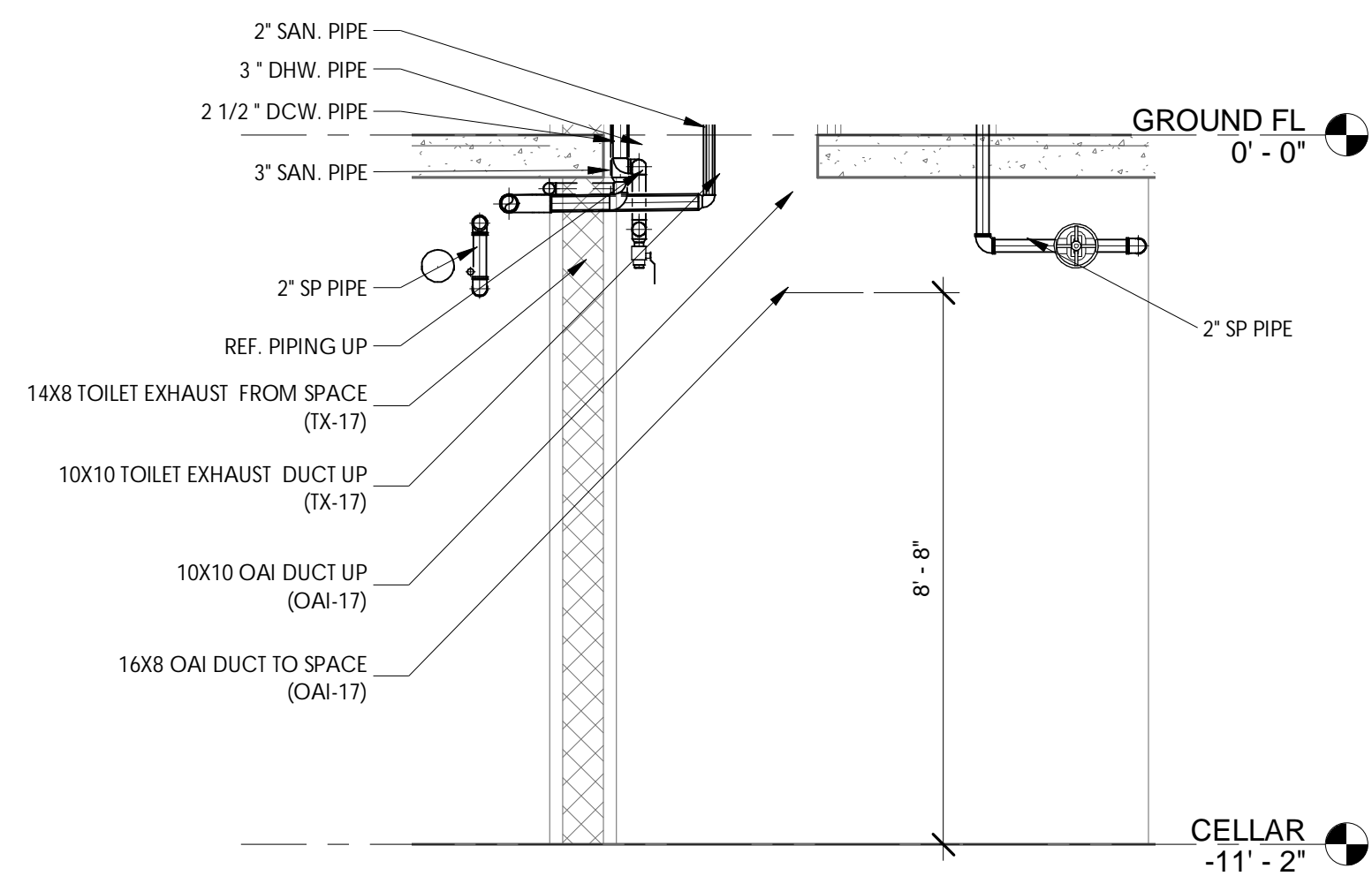
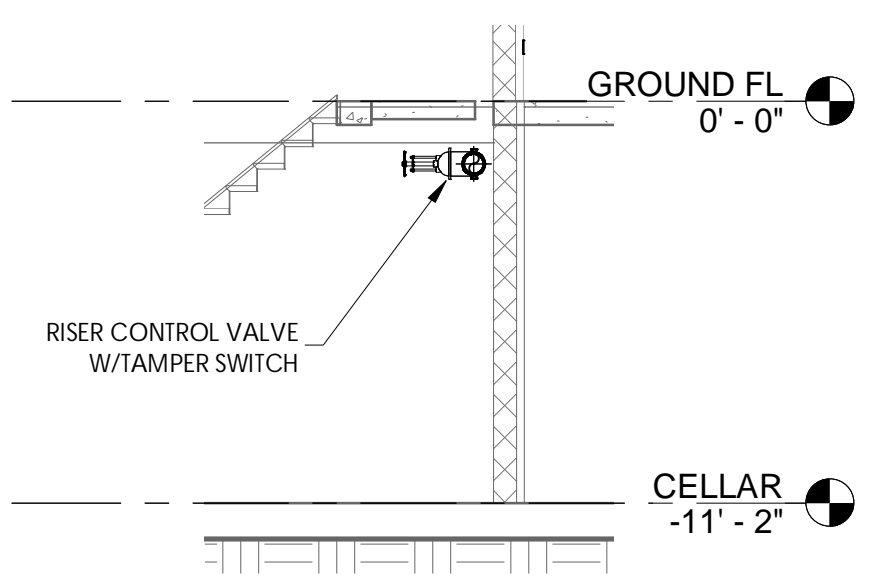


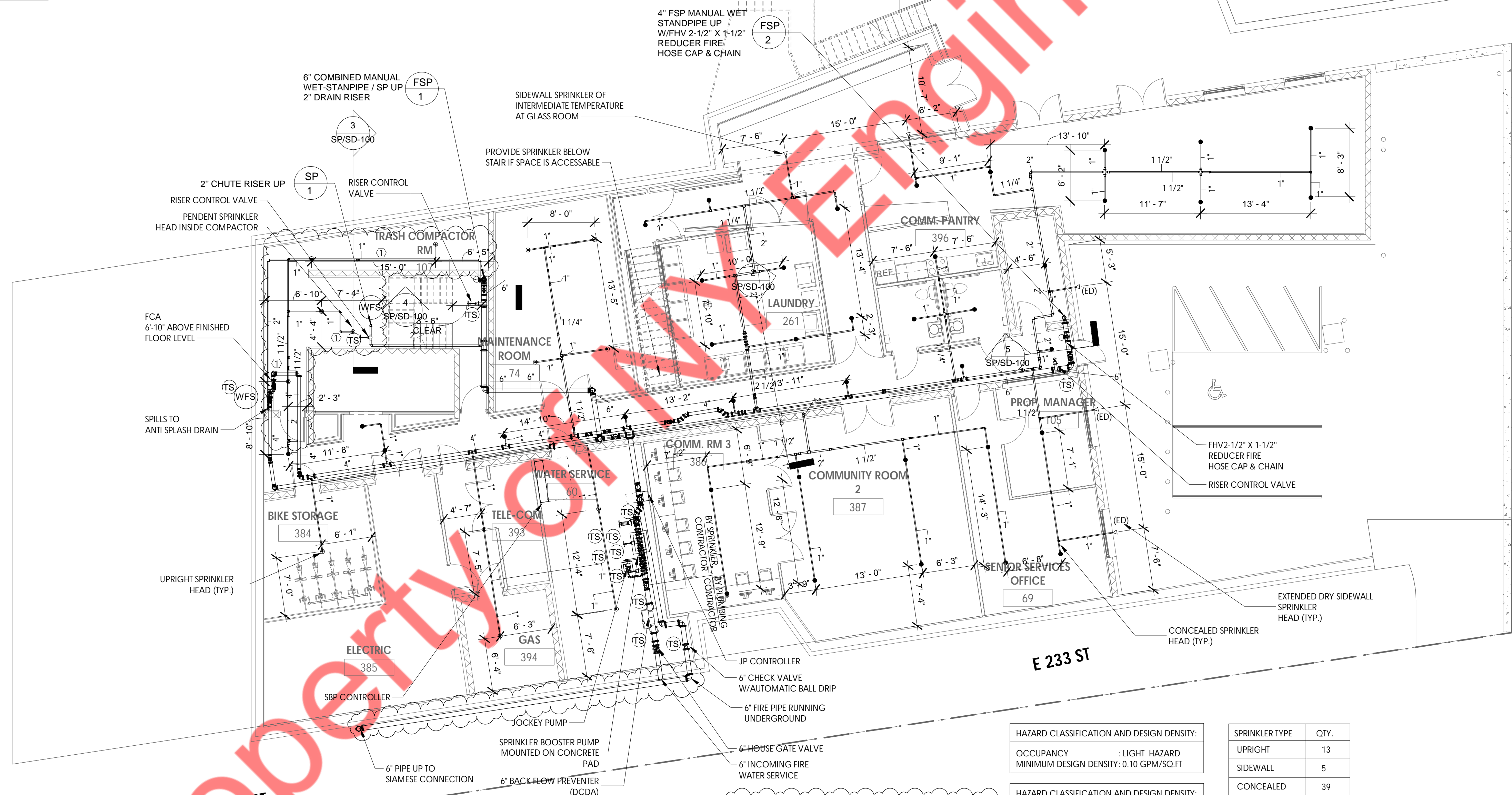
2 CELLAR FLOOR CORRIDOR  
3/8" = 1'-0"



3 CELLAR FLOOR TRASH ROOM  
3/8" = 1'-0"



4 SECTION-RISER CONTROL VALVE  
3/16" = 1'-0"



1 CELLAR SPRINKLER PLAN  
1/8" = 1'-0"

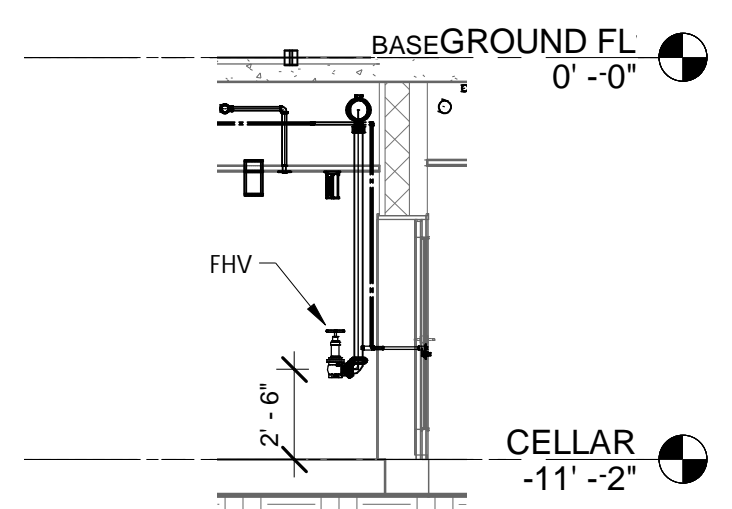
**KEYNOTE**  
 1 PROVIDE HEAT TRACING FOR EXPOSED SPRINKLER PIPING IN TRASH COMPACTOR ROOM & FOR HEAT TRACING CABLE SCHEDULE COORDINATE WITH PLUMBING CONTRACTOR.

**GENERAL NOTE:**  
 1. ALL SPRINKLER HEADS MEET DESIGN CRITERIA PER COVERAGE.  
 2. FOR SPRINKLER AND STANDPIPE WORK ONLY.  
 3. TRADE CONTRACTORS TO PROVIDE ALL LOCATIONS OF REQUIRED ACCESS TO GENERAL CONTRACTOR. GENERAL CONTRACTOR TO COORDINATE WITH ARCHITECT ON ACCESS DOOR LOCATIONS AND INSTALL ACCESS DOORS.  
 4. ALL EXPOSED SPRINKLER PIPING IN UNITS TO BE PAINTED WHITE.

HAZARD CLASSIFICATION AND DESIGN DENSITY:  
 OCCUPANCY : LIGHT HAZARD  
 MINIMUM DESIGN DENSITY: 0.10 GPM/SQ.FT

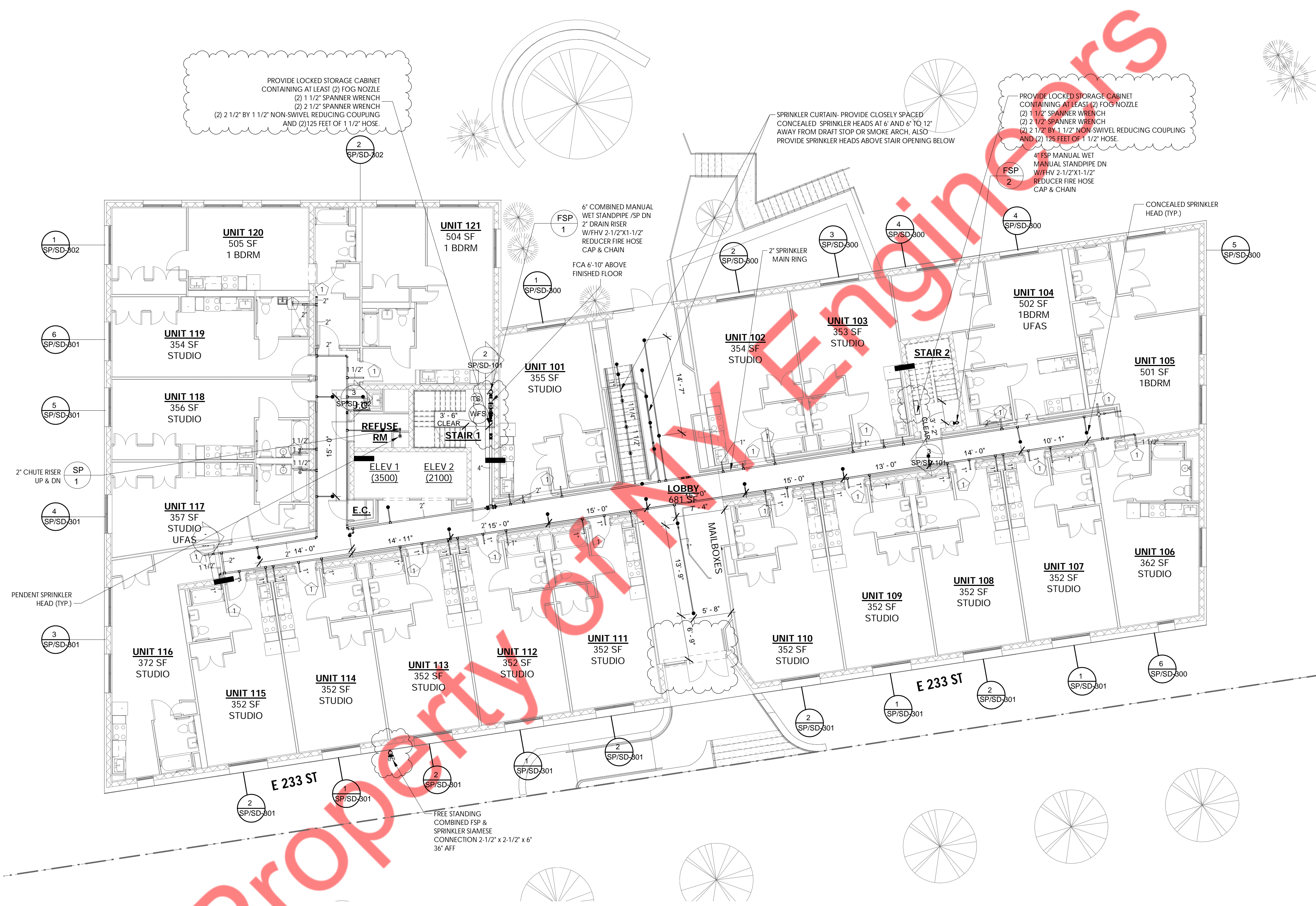
HAZARD CLASSIFICATION AND DESIGN DENSITY:  
 OCCUPANCY : ORDINARY HAZARD  
 MINIMUM DESIGN DENSITY: 0.15 GPM/SQ.FT

SPRINKLER TYPE	QTY.
UPRIGHT	13
SIDEWALL	5
CONCEALED	39
PENDENT	1
TOTAL HEADS	58



5 SECTION-FIRE HOSE VALVE  
3/16" = 1'-0"





**GENERAL NOTE:**

1. ALL SPRINKLER HEADS MEET DESIGN CRITERIA PER COVERAGE.
2. FOR SPRINKLER AND STANDPIPE WORK ONLY.
3. TRADE CONTRACTORS TO PROVIDE ALL LOCATIONS OF REQUIRED ACCESS TO GENERAL CONTRACTOR. GENERAL CONTRACTOR TO COORDINATE WITH ARCHITECT ON ACCESS DOOR LOCATIONS AND INSTALL ACCESS DOORS.
4. ALL EXPOSED SPRINKLER PIPING IN UNITS TO BE PAINTED WHITE.

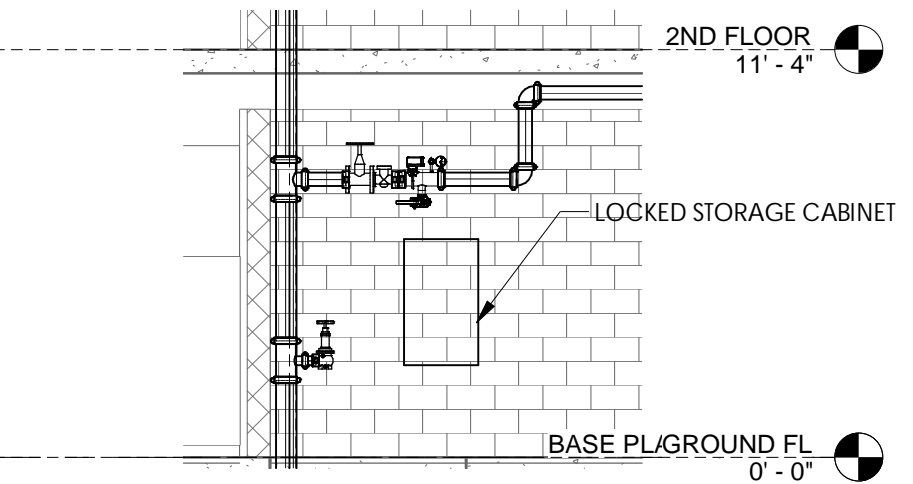
**HAZARD CLASSIFICATION AND DESIGN DENSITY:**

OCCUPANCY : LIGHT HAZARD  
 MINIMUM DESIGN DENSITY: 0.10 GPM/SQ.FT

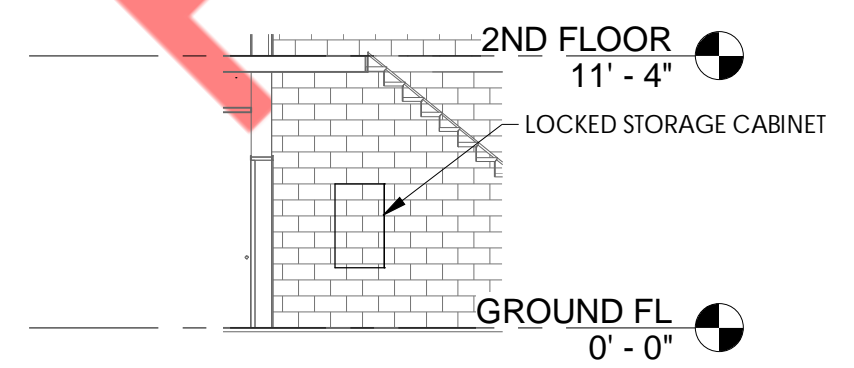
**KEY NOTE:**

① FOR CONTINUATION REFER PART PLANS

SPRINKLER TYPE	QTY.
UPRIGHT	21
SIDEWALL	54
CONCEALED	33
CHUTE SPRINKLER	01
EXTENDED SIDEWALL	01
<b>TOTAL HEADS</b>	<b>110</b>



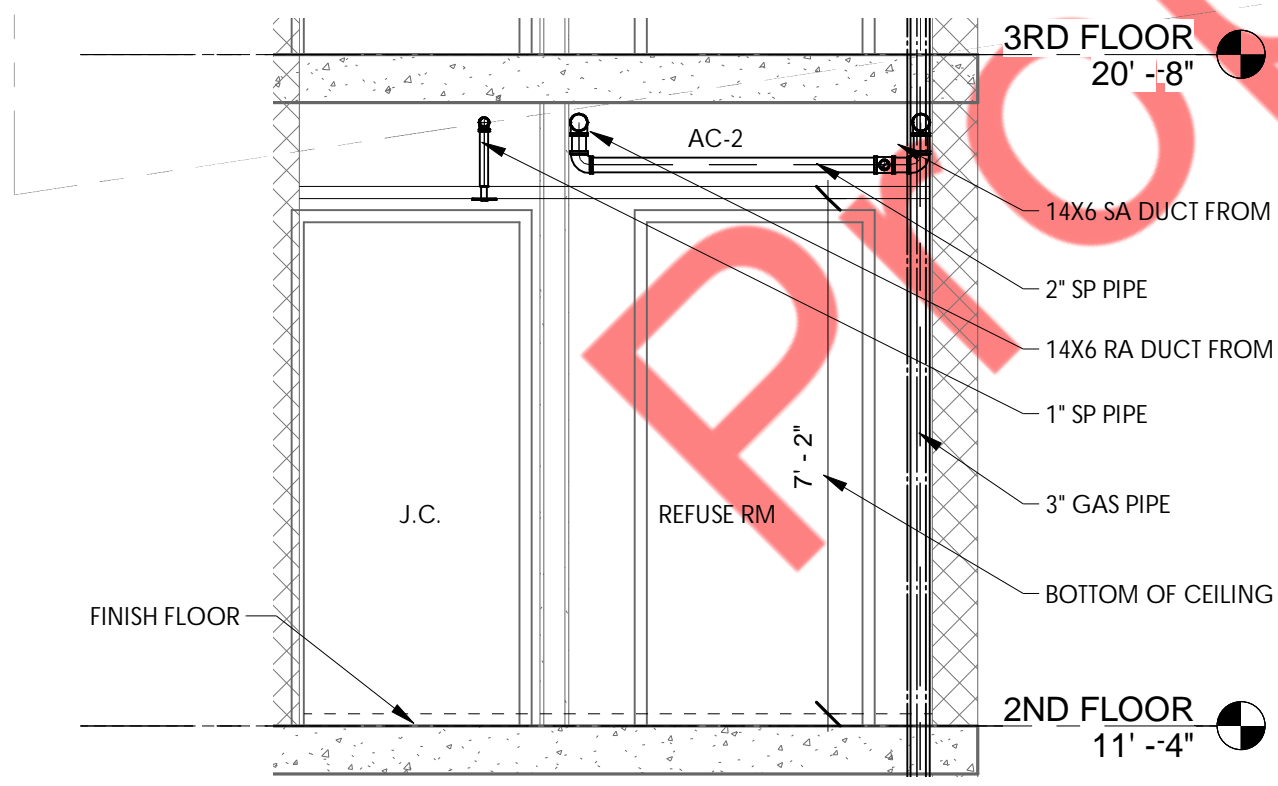
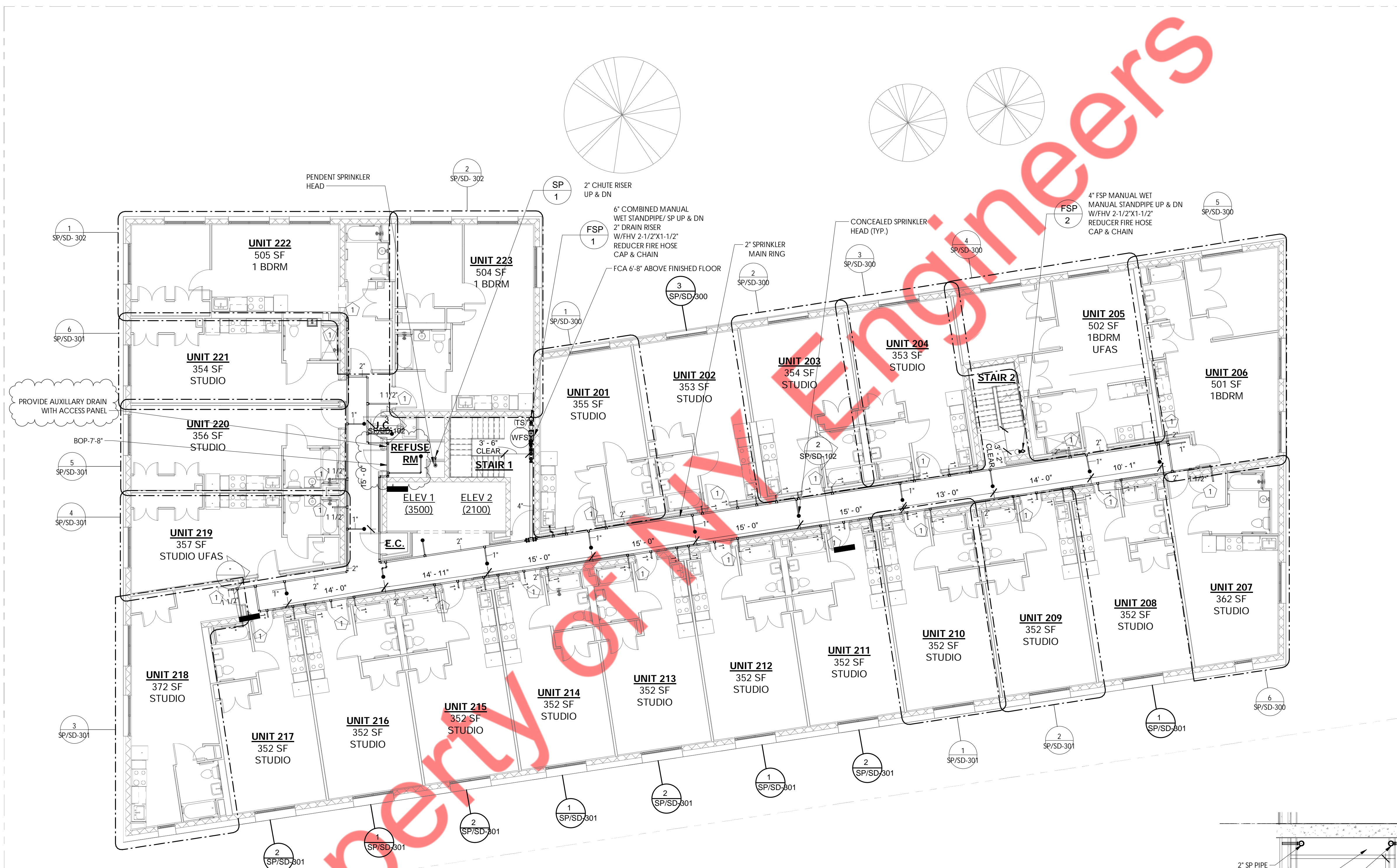
SECTION - LOCKED STORAGE CABINET INSIDE STAIR 1  
 3/16" = 1'-0"



SECTION - LOCKED STORAGE CABINET INSIDE STAIR 2  
 1/8" = 1'-0"

① GROUND FLOOR SPRINKLER PLAN  
 1/8" = 1'-0"





3 2ND FLOOR REFUSE RM AC UNIT  
3/8" = 1'-0"

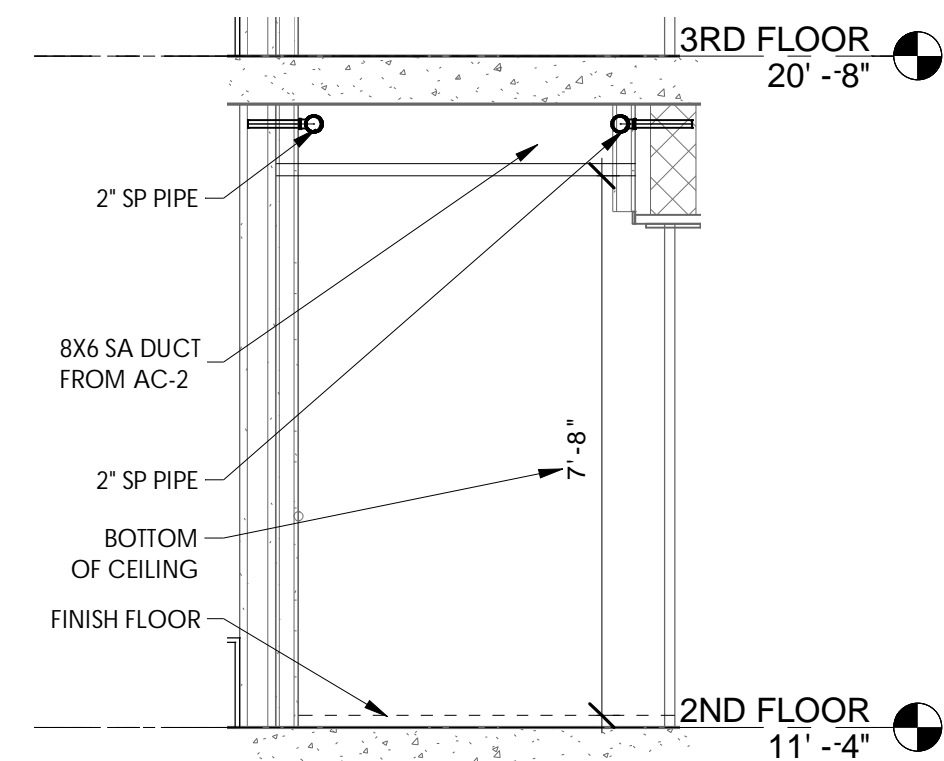
1 2ND FLOOR SPRINKLER PLAN  
1/8" = 1'-0"

**GENERAL NOTE:**  
 1. ALL SPRINKLER HEADS MEET DESIGN CRITERIA PER COVERAGE.  
 2. FOR SPRINKLER AND STANDPIPE WORK ONLY.  
 3. TRADE CONTRACTORS TO PROVIDE ALL LOCATIONS OF REQUIRED ACCESS TO GENERAL CONTRACTOR. GENERAL CONTRACTOR TO COORDINATE WITH ARCHITECT ON ACCESS DOOR LOCATIONS AND INSTALL ACCESS DOORS.  
 4. ALL EXPOSED SPRINKLER PIPING IN UNITS TO BE PAINTED WHITE.

**HAZARD CLASSIFICATION AND DESIGN DENSITY:**  
 OCCUPANCY : LIGHT HAZARD  
 MINIMUM DESIGN DENSITY: 0.10 GPM/SQ.FT

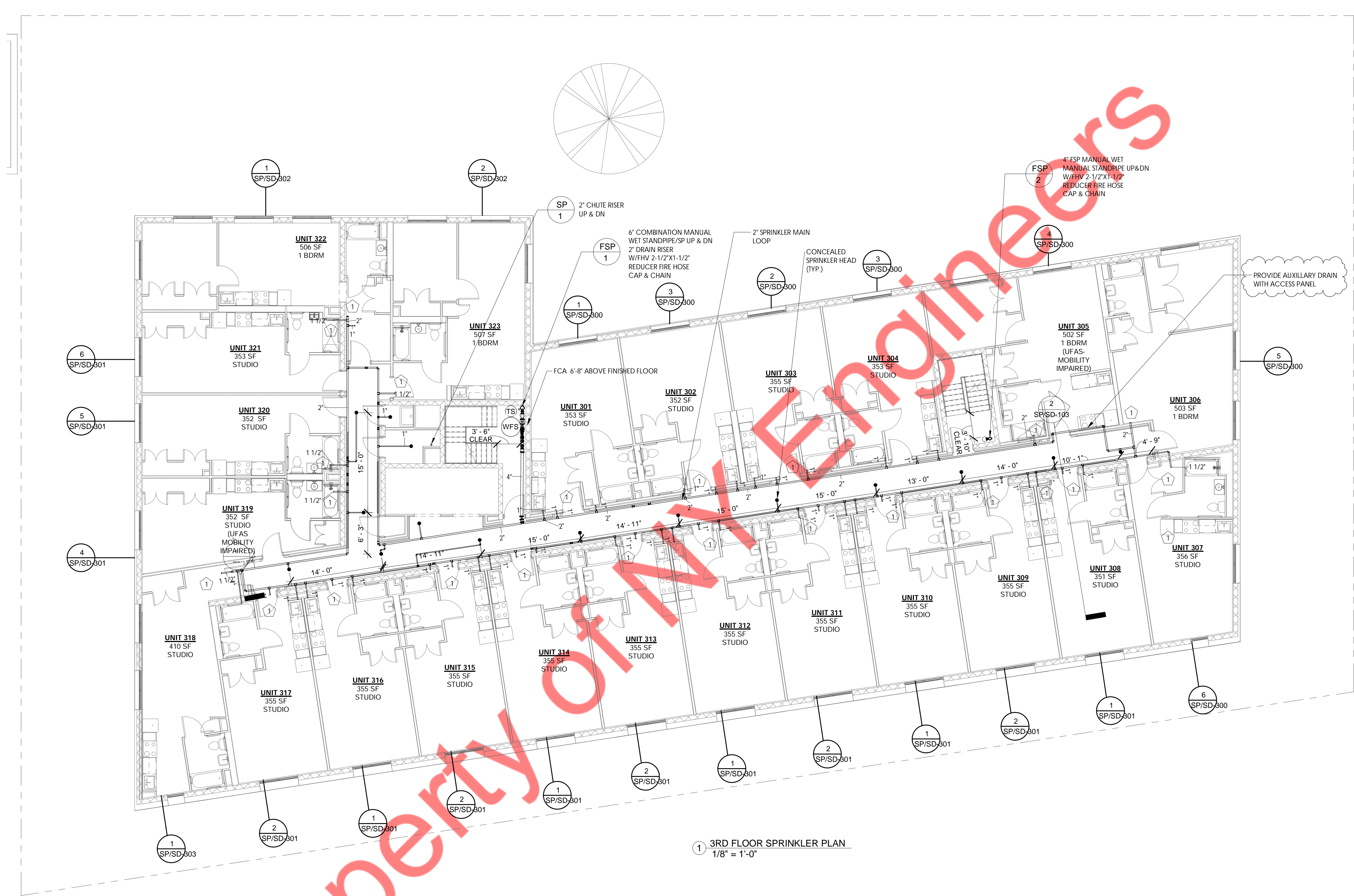
**KEY NOTE:**  
 1 FOR CONTINUATION REFER PART PLANS

SPRINKLER TYPE	QTY.
UPRIGHT	20
SIWALL	59
CONCEALED	22
CHUTE SPRINKLER	01
EXTENDED SIWALL	01
<b>TOTAL HEADS</b>	<b>103</b>



2 2ND FLOOR CORRIDOR  
3/8" = 1'-0"





① 3RD FLOOR SPRINKLER PLAN  
1/8" = 1'-0"

**GENERAL NOTE:**

1. ALL SPRINKLER HEADS MEET DESIGN CRITERIA PER COVERAGE.
2. FOR SPRINKLER AND STANDPIPE WORK ONLY.
3. TRADE CONTRACTORS TO PROVIDE ALL LOCATIONS OF REQUIRED ACCESS TO GENERAL CONTRACTOR. GENERAL CONTRACTOR TO COORDINATE WITH ARCHITECT ON ACCESS DOOR LOCATIONS AND INSTALL ACCESS DOORS.
4. ALL EXPOSED SPRINKLER PIPING IN UNITS TO BE PAINTED WHITE.

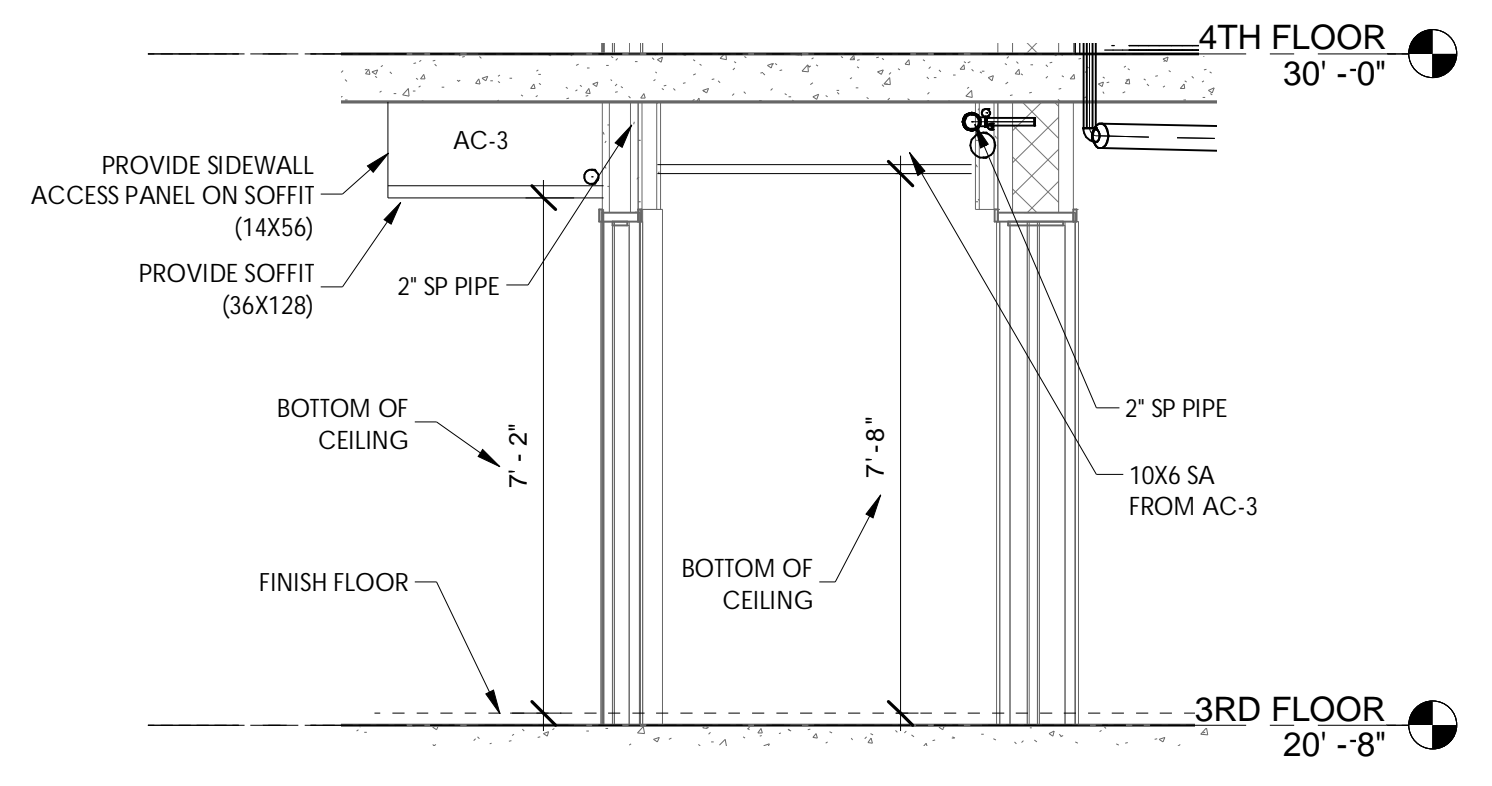
**HAZARD CLASSIFICATION AND DESIGN DENSITY:**

OCCUPANCY : LIGHT HAZARD  
MINIMUM DESIGN DENSITY: 0.10 GPM/SQ.FT

**KEY NOTE:**

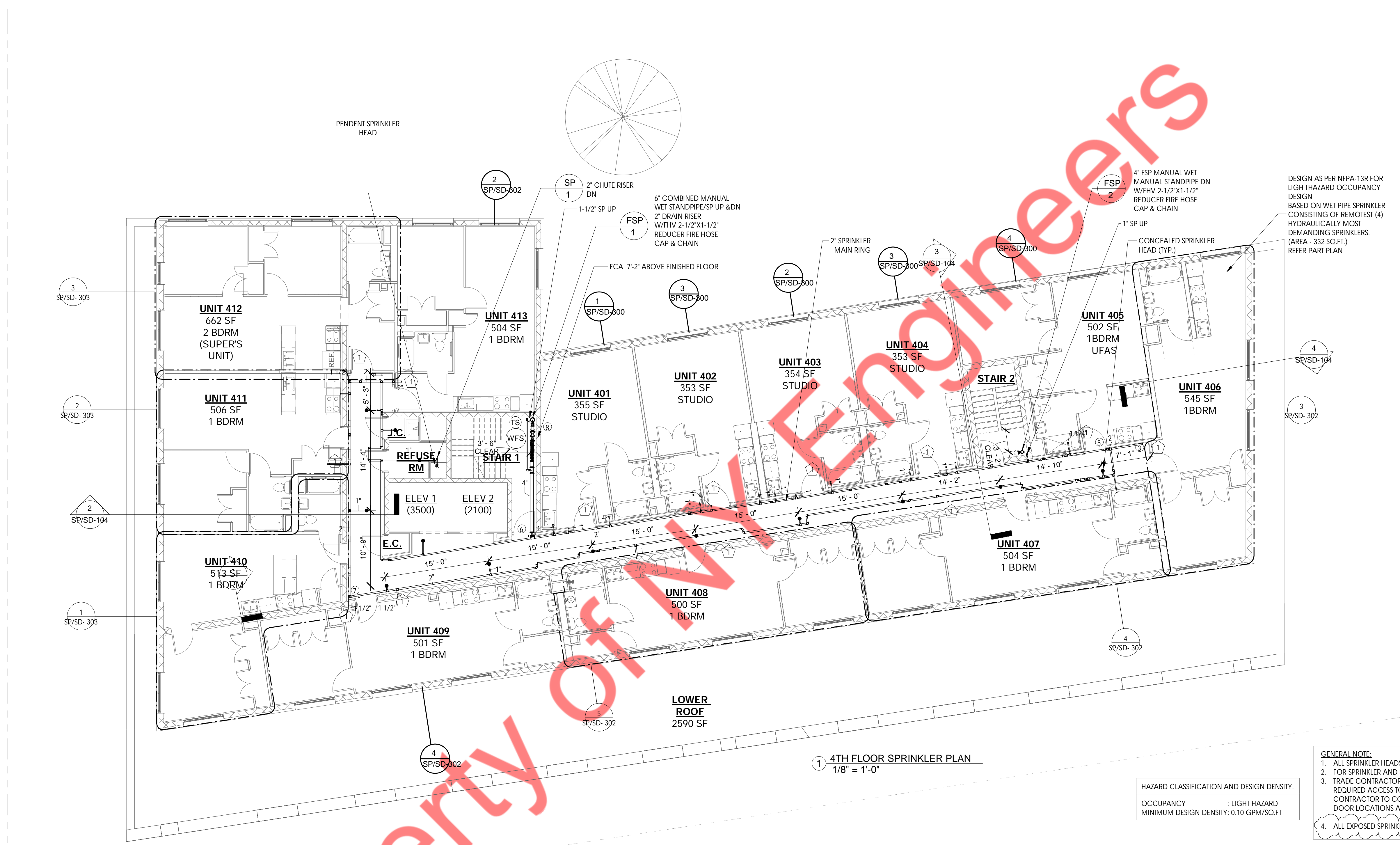
① FOR CONTINUATION REFER PART PLANS

SPRINKLER TYPE	QTY.
UPRIGHT	20
SIDEWALL	59
CONCEALED	24
EXTENDED SIDEWALL	01
<b>TOTAL HEADS</b>	<b>104</b>



② 3RD FLOOR CORRIDOR  
3/8" = 1'-0"



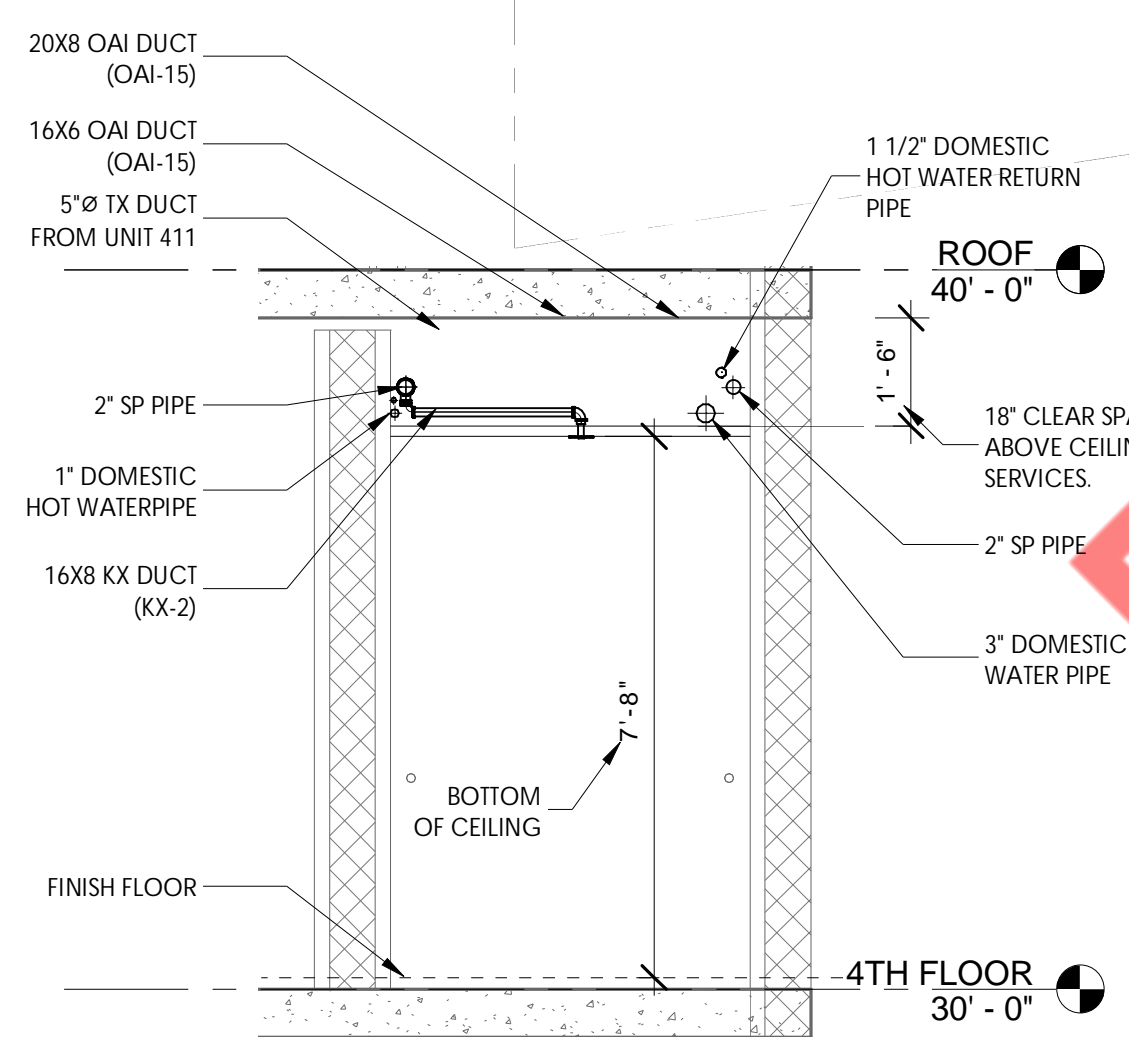


DESIGN AS PER NFPA-13R FOR LIGHT HAZARD OCCUPANCY DESIGN BASED ON WET PIPE SPRINKLER CONSISTING OF REMOTEST (4) HYDRAULICALLY MOST DEMANDING SPRINKLERS. (AREA - 332 SQ. FT.) REFER PART PLAN

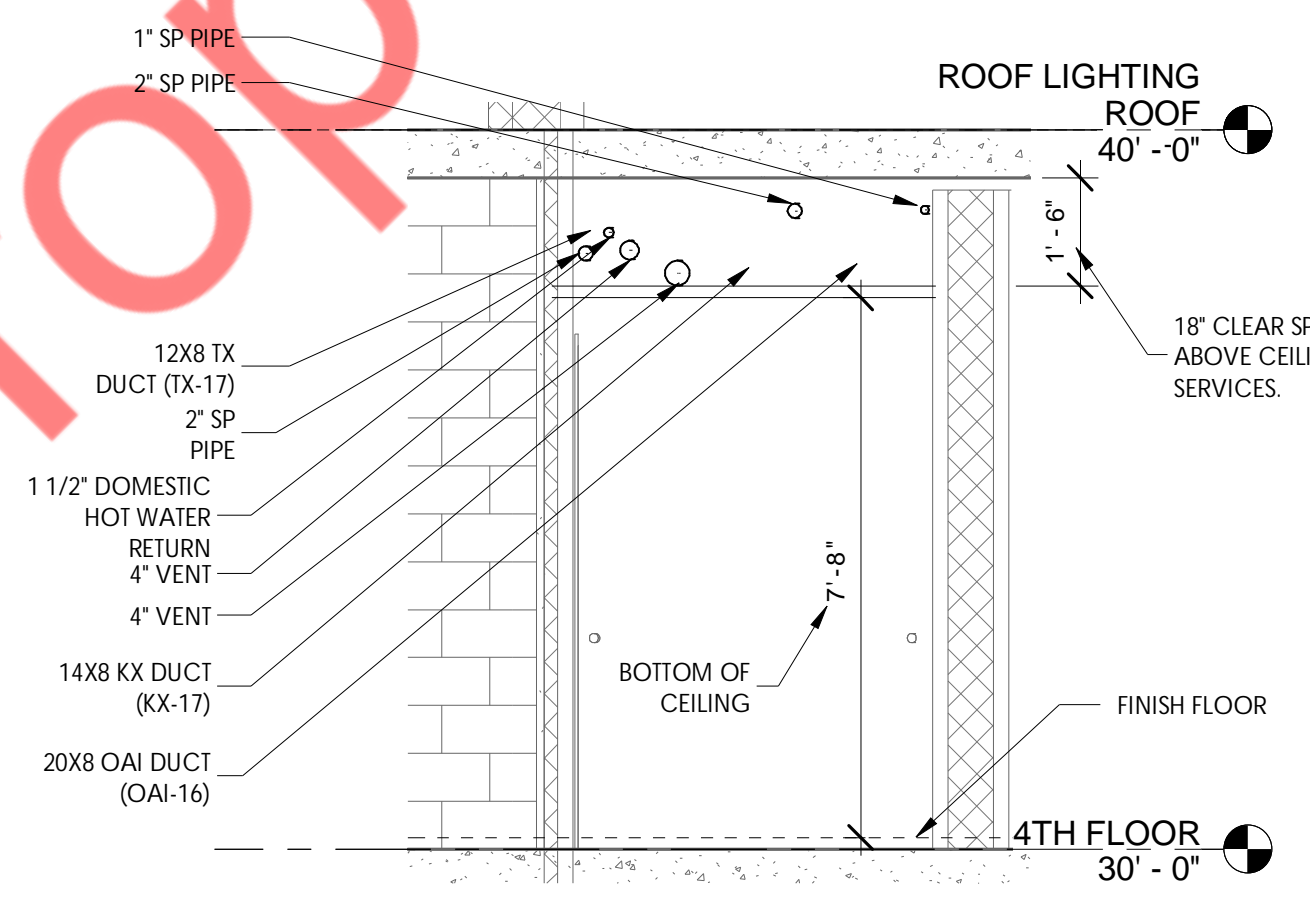
④ 4TH FLOOR SPRINKLER PLAN  
1/8" = 1'-0"

HAZARD CLASSIFICATION AND DESIGN DENSITY:  
OCCUPANCY : LIGHT HAZARD  
MINIMUM DESIGN DENSITY: 0.10 GPM/SQ.FT

- GENERAL NOTE:
1. ALL SPRINKLER HEADS MEET DESIGN CRITERIA PER COVERAGE.
  2. FOR SPRINKLER AND STANDPIPE WORK ONLY.
  3. TRADE CONTRACTORS TO PROVIDE ALL LOCATIONS OF REQUIRED ACCESS TO GENERAL CONTRACTOR. GENERAL CONTRACTOR TO COORDINATE WITH ARCHITECT ON ACCESS DOOR LOCATIONS AND INSTALL ACCESS DOORS.
  4. ALL EXPOSED SPRINKLER PIPING IN UNITS TO BE PAINTED WHITE.



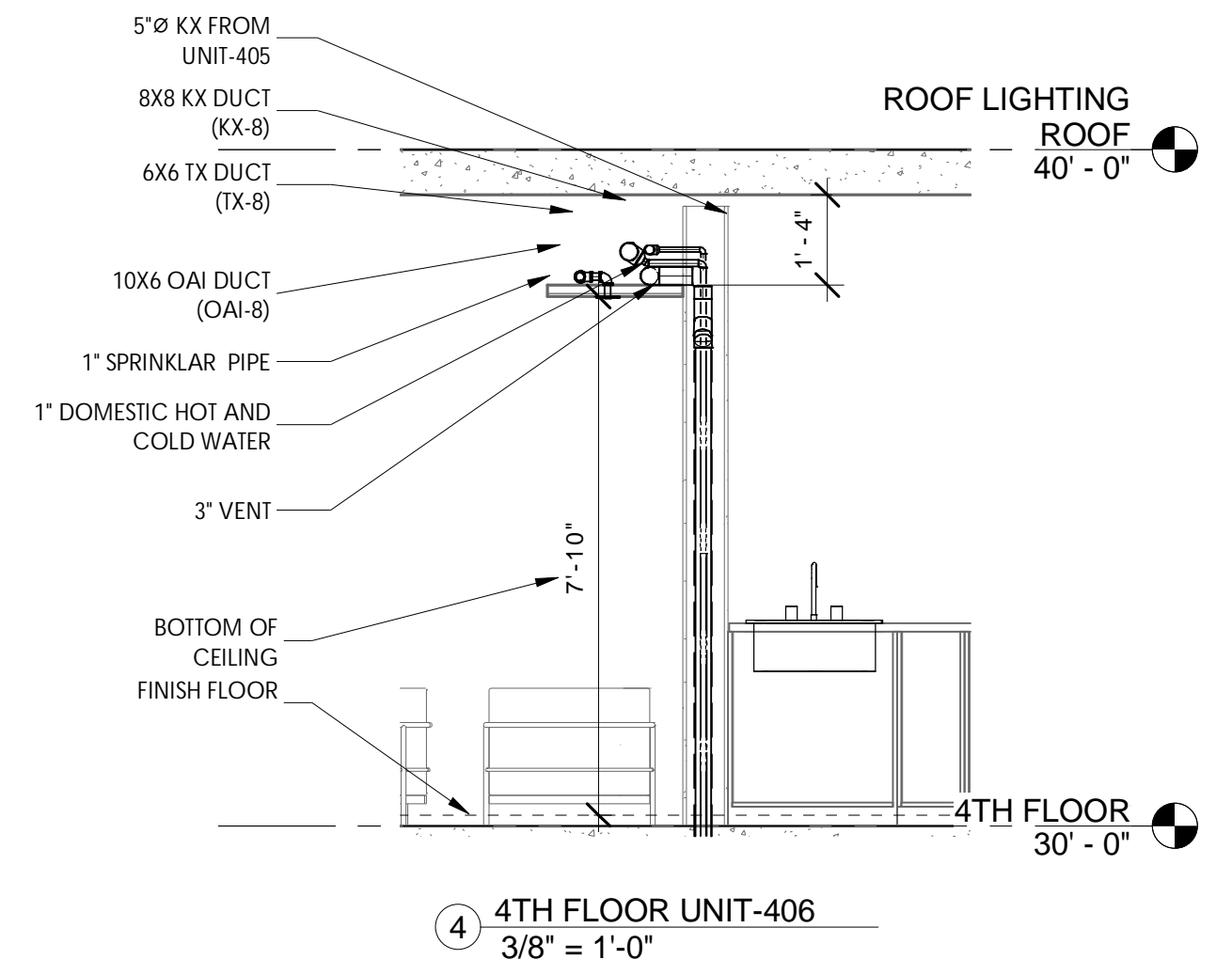
② 4TH FLOOR CORRIDOR-1  
3/8" = 1'-0"



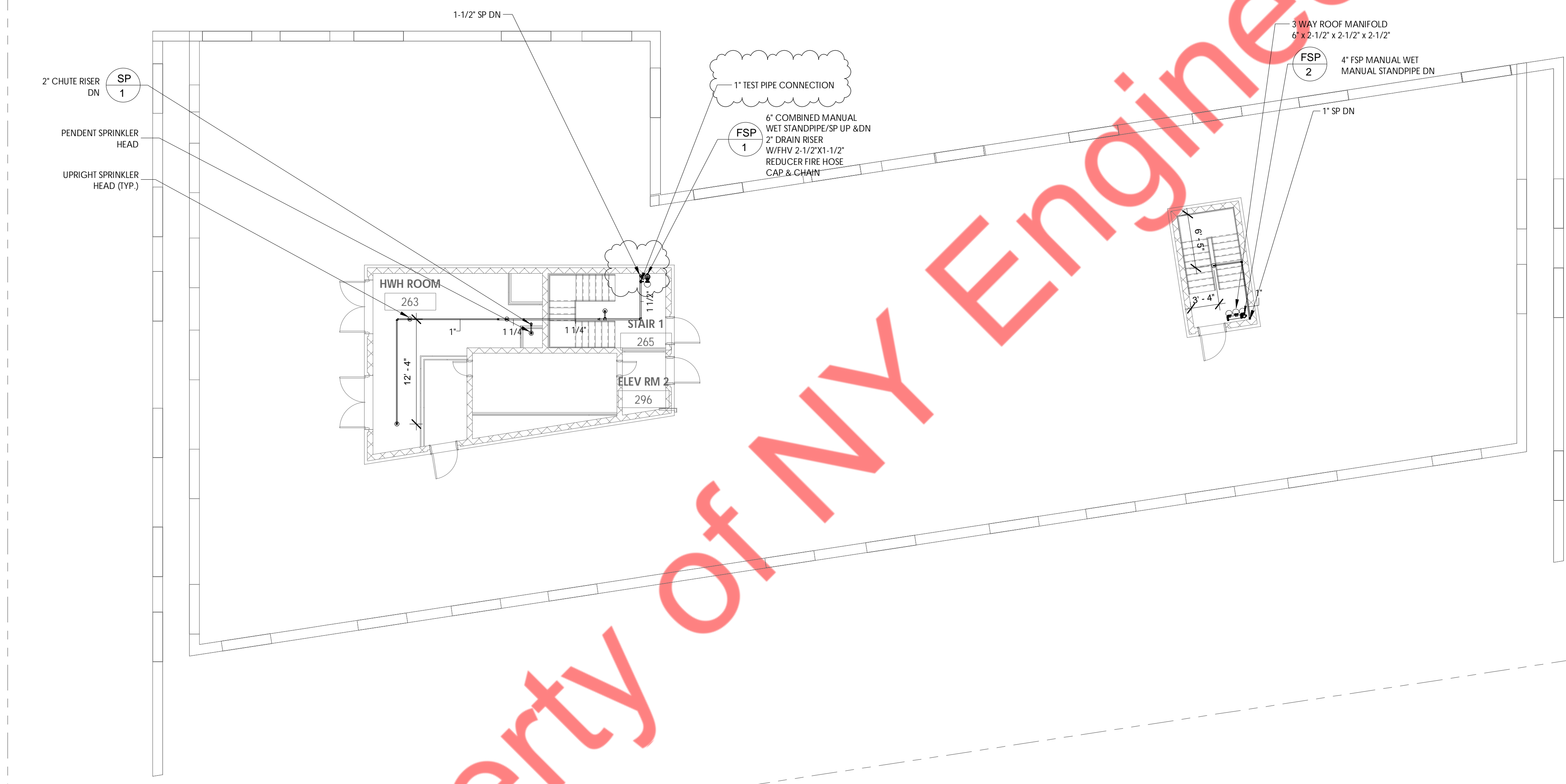
③ 4TH FLOOR CORRIDOR-2  
3/8" = 1'-0"

KEY NOTE:  
① FOR CONTINUATION REFER PART PLANS

SPRINKLER TYPE	QTY.
UPRIGHT	12
SIDEWALL	42
CONCEALED	21
CHUTE SPRINKLER	01
EXTENDED SIDEWALL	01
TOTAL HEADS	77



④ 4TH FLOOR UNIT-406  
3/8" = 1'-0"



Property of NY Engineers

① ROOF SPRINKLER PLAN  
1/8" = 1'-0"

**GENERAL NOTE:**  
 1. ALL SPRINKLER HEADS MEET DESIGN CRITERIA PER COVERAGE.  
 2. FOR SPRINKLER AND STANDPIPE WORK ONLY.  
 3. TRADE CONTRACTORS TO PROVIDE ALL LOCATIONS OF REQUIRED ACCESS TO GENERAL CONTRACTOR. GENERAL CONTRACTOR TO COORDINATE WITH ARCHITECT ON ACCESS DOOR LOCATIONS AND INSTALL ACCESS DOORS.  
 4. ALL EXPOSED SPRINKLER PIPING IN UNITS TO BE PAINTED WHITE.

**HAZARD CLASSIFICATION AND DESIGN DENSITY:**  
 OCCUPANCY : LIGHT HAZARD  
 MINIMUM DESIGN DENSITY: 0.10 GPM/SQ.FT

**HAZARD CLASSIFICATION AND DESIGN DENSITY:**  
 OCCUPANCY : ORDINARY HAZARD  
 MINIMUM DESIGN DENSITY: 0.15 GPM/SQ.FT

SPRINKLER TYPE	QTY.
UPRIGHT	05
CHUTE SPRINKLER	01
TOTAL HEADS	06