

ALL BRANCH CIRCUITS LOCATED IN THIS AREA SHALL BE CIRCUITED TO PANEL "AP-1A", CIRCUIT NUMBERS INDICATED, U.O.N.

CENTRAL LIGHTING INVERTER FOR EMERGENCY LIGHTS, ILLUMINATOR EM SERIES 2.2 KVA BY MYERS POWER PRODUCT. COORDINATE EXACT LOCATION WITH OWNER AND ARCHITECT. SEE DETAILS 4/E-402.00

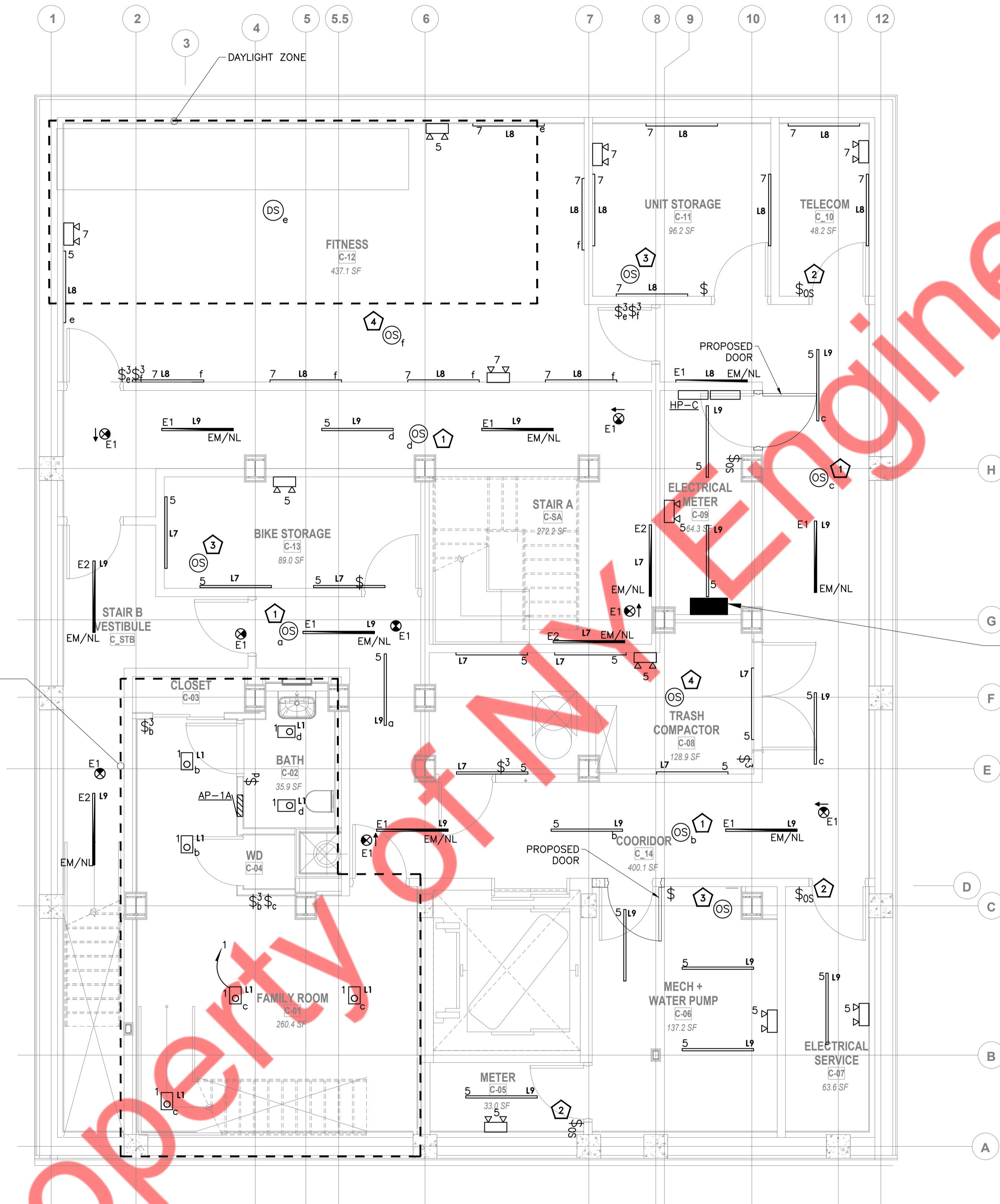
**1 LIGHTING PLAN - CELLAR**  
1/4" = 1'-0"

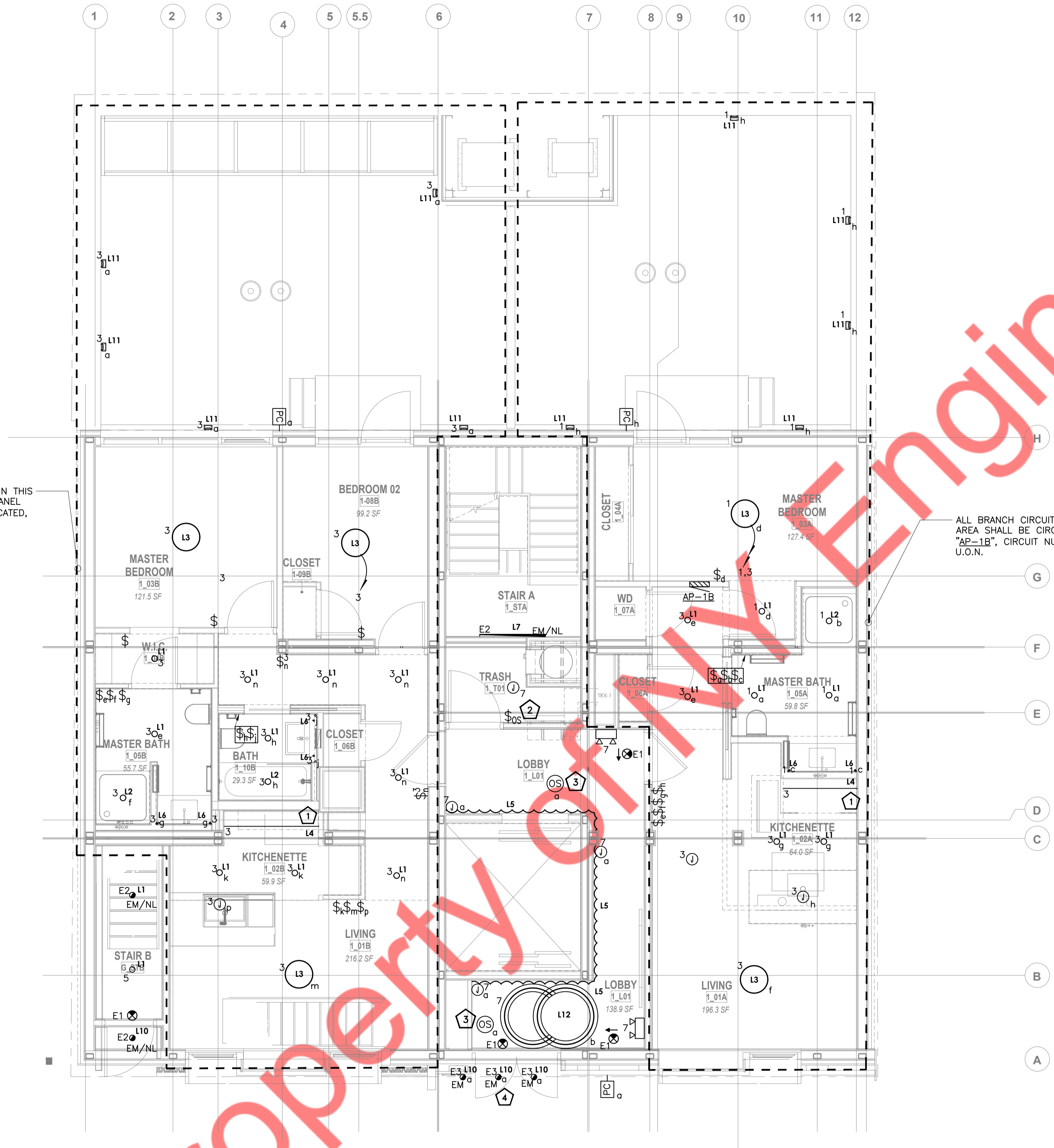
**KEYED WORK NOTES:**

- 1 TURN ON ALL LIGHTS IN THE CORRIDOR AREA WITH ACTUATION OF ANY OCCUPANCY SENSOR. SEE WIRING DIAGRAM, DETAIL# 5/E-400.00 FOR MORE INFORMATION.
- 2 SEE WIRING DIAGRAM, DETAIL# 3/E-401.00 FOR MORE INFORMATION.
- 3 SEE WIRING DIAGRAM, DETAIL# 2/E-402.00 FOR MORE INFORMATION.
- 4 SEE WIRING DIAGRAM, DETAIL# 6/E-401.00 FOR MORE INFORMATION.

**LIGHTING DRAWING NOTES:**

- 1. REFER TO DWG. E-001.00 FOR ELECTRICAL GENERAL NOTES, SYMBOL LIST & ABBREVIATIONS, DWG. E-003.00 & E-004.00 FOR ELECTRICAL SPECIFICATIONS.
- 2. CIRCUITING FOR LIGHTING FIXTURES IN ROOMS WITH TOGGLE SWITCHES SHALL BE CONTROLLED BY DESIGNATED SWITCHES. IF SPECIFIC DESIGNATION IS NOT INDICATED, ALL LIGHTING FIXTURES IN ROOM/AREA SHALL BE CONTROLLED BY THE SWITCH INDICATED.
- 3. REFER DWG E-002.00 FOR LIGHT FIXTURE SCHEDULE & LIGHTING CONTROL SCHEDULE.
- 4. ALL BRANCH CIRCUITS LOCATED IN THIS AREA SHALL BE CIRCUITED TO PANEL "HP-C", CIRCUIT NUMBERS INDICATED, U.O.N.
- 5. LIGHT FIXTURES CIRCUITED AS "E1" & "E2" ON PLANS ARE FED FROM EMERGENCY INVERTER. REFER DETAILS 4/E-402.00 FOR LIGHTING INVERTER.





ALL BRANCH CIRCUITS LOCATED IN THIS AREA SHALL BE CIRCUITED TO PANEL "AP-1A", CIRCUIT NUMBERS INDICATED, U.O.N.

ALL BRANCH CIRCUITS LOCATED IN THIS AREA SHALL BE CIRCUITED TO PANEL "AP-1B", CIRCUIT NUMBERS INDICATED, U.O.N.

1 LIGHTING PLAN - 1ST FLOOR  
1/4" = 1'-0"

Property of Engineers

**KEYED WORK NOTES:**

- 1 PROVIDE ROCKER SWITCH FOR UNDERCABINET TASK LIGHT. COORDINATE WITH ARCHITECT FOR FINAL FIXTURE MANUFACTURER AND MODEL.
- 2 SEE WIRING DIAGRAM, DETAIL# 3/E-401.00 FOR MORE INFORMATION.
- 3 TURN ON ALL LIGHTS IN THE CORRIDOR AREA WITH ACTUATION OF ANY OCCUPANCY SENSOR. SEE WIRING DIAGRAM, DETAIL# 5/E-400.00 FOR MORE INFORMATION.
- 4 SEE WIRING DIAGRAM, DETAIL# 4/E-402.00 FOR MORE INFORMATION.

**LIGHTING DRAWING NOTES:**

- 1. REFER TO DWG. E-001.00 FOR ELECTRICAL GENERAL NOTES, SYMBOL LIST & ABBREVIATIONS, DWG. E-003.00 & E-004.00 FOR ELECTRICAL SPECIFICATIONS.
- 2. CIRCUITING FOR LIGHTING FIXTURES IN ROOMS WITH TOGGLE SWITCHES SHALL BE CONTROLLED BY DESIGNATED SWITCHES. IF SPECIFIC DESIGNATION IS NOT INDICATED, ALL LIGHTING FIXTURES IN ROOM/AREA SHALL BE CONTROLLED BY THE SWITCH INDICATED.
- 3. REFER DWG E-002.00 FOR LIGHT FIXTURE SCHEDULE & LIGHTING CONTROL SCHEDULE.
- 4. ALL BRANCH CIRCUITS LOCATED IN THIS AREA SHALL BE CIRCUITED TO PANEL "HP-C", CIRCUIT NUMBERS INDICATED, U.O.N.
- 5. LIGHT FIXTURES CIRCUITED AS "E1" & "E2" ON PLANS ARE FED FROM EMERGENCY INVERTER. REFER DETAIL# 4/E-402.00 FOR MORE INFORMATION.

ALL BRANCH CIRCUITS LOCATED IN THIS AREA SHALL BE CIRCUITED TO PANEL "AP-4D", CIRCUIT NUMBERS INDICATED, U.O.N.

ALL BRANCH CIRCUITS LOCATED IN THIS AREA SHALL BE CIRCUITED TO PANEL "AP-4C", CIRCUIT NUMBERS INDICATED, U.O.N.

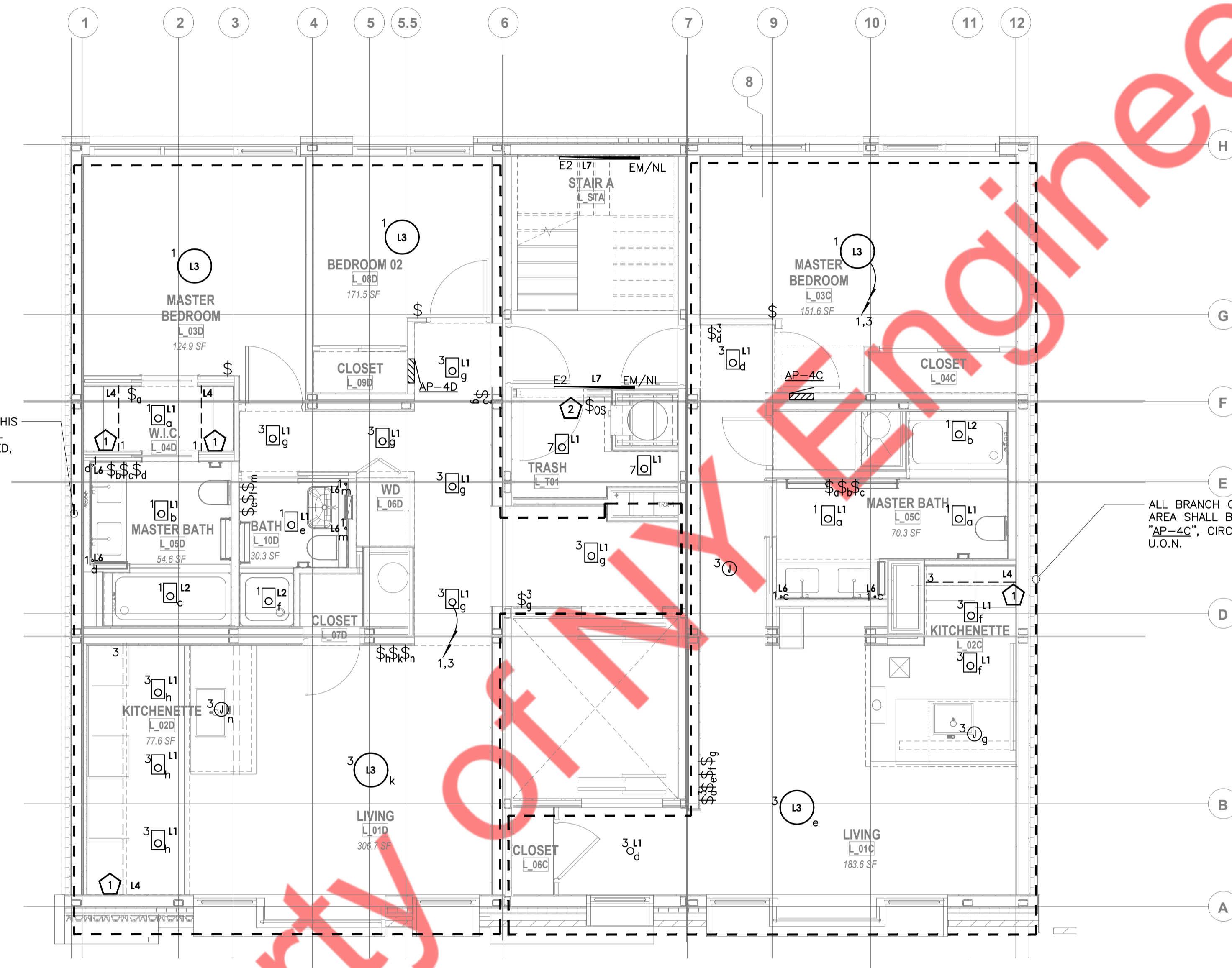
1 LIGHTING PLAN - 2ND TO 4TH FLOOR (TYPICAL)  
1/4" = 1'-0"

KEYED WORK NOTES:

- 1 PROVIDE ROCKER SWITCH FOR UNDERCABINET TASK LIGHT. COORDINATE WITH ARCHITECT FOR FINAL FIXTURE MANUFACTURER AND MODEL.
- 2 SEE WIRING DIAGRAM, DETAIL# 3/E-401.00 FOR MORE INFORMATION.

LIGHTING DRAWING NOTES:

- 1. REFER TO DWG. E-001.00 FOR ELECTRICAL GENERAL NOTES, SYMBOL LIST & ABBREVIATIONS, DWG. E-003.00 & E-004.00 FOR ELECTRICAL SPECIFICATIONS.
- 2. CIRCUITING FOR LIGHTING FIXTURES IN ROOMS WITH TOGGLE SWITCHES SHALL BE CONTROLLED BY DESIGNATED SWITCHES. IF SPECIFIC DESIGNATION IS NOT INDICATED, ALL LIGHTING FIXTURES IN ROOM/AREA SHALL BE CONTROLLED BY THE SWITCH INDICATED.
- 3. REFER DWG E-002.00 FOR LIGHT FIXTURE SCHEDULE & LIGHTING CONTROL SCHEDULE.
- 4. ALL BRANCH CIRCUITS LOCATED IN THIS AREA SHALL BE CIRCUITED TO PANEL "HP-C", CIRCUIT NUMBERS INDICATED, U.O.N.
- 5. LIGHT FIXTURES CIRCUITED AS "E2" ON PLANS ARE FED FROM EMERGENCY INVERTER. REFER DETAIL#4/E-402.00 FOR MORE INFORMATION.



ALL BRANCH CIRCUITS LOCATED IN THIS AREA SHALL BE CIRCUITED TO PANEL "AP-5D", CIRCUIT NUMBERS INDICATED, U.O.N.

ALL BRANCH CIRCUITS LOCATED IN THIS AREA SHALL BE CIRCUITED TO PANEL "AP-5C", CIRCUIT NUMBERS INDICATED, U.O.N.

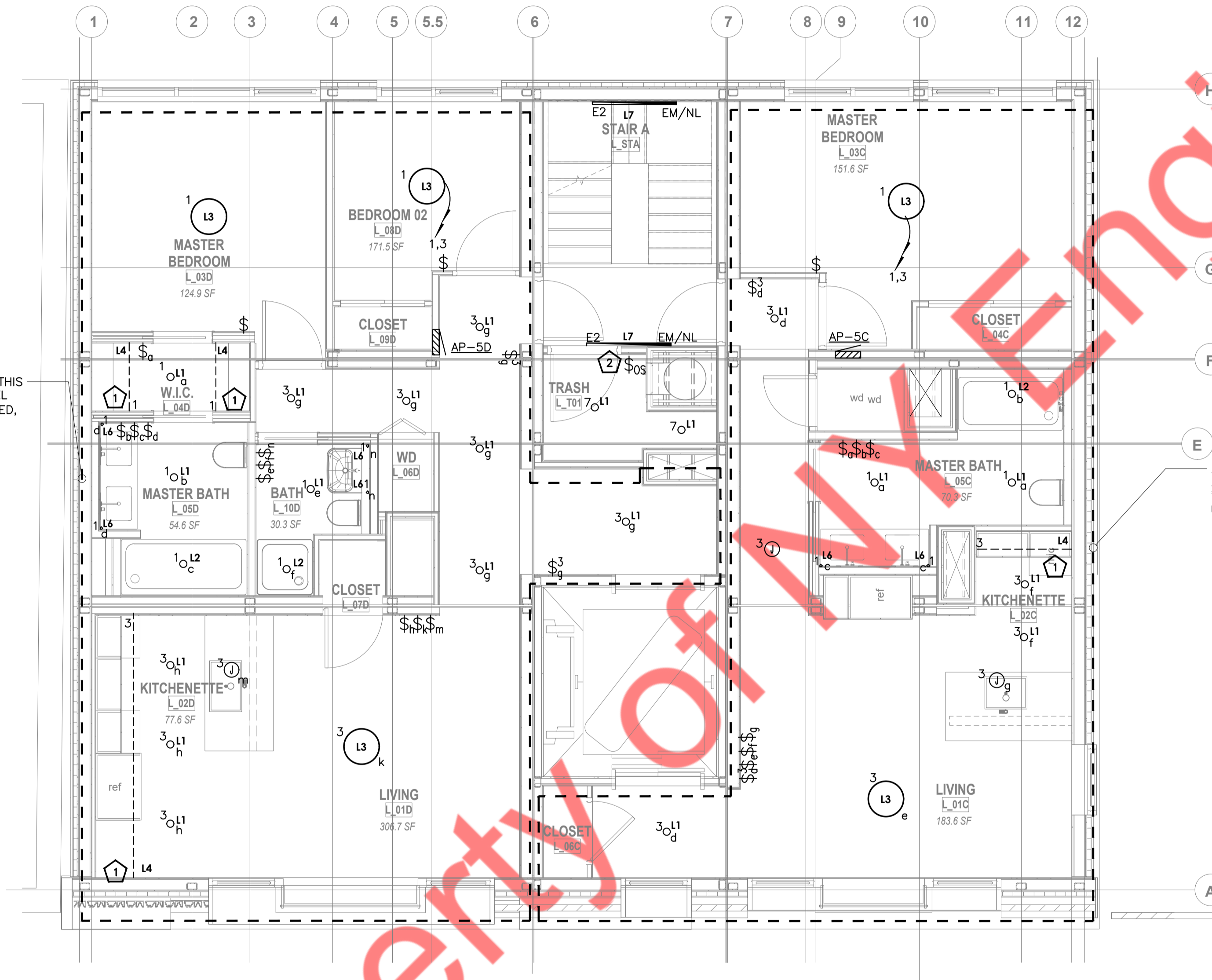
**1 LIGHTING PLAN - 5TH FLOOR**  
1/4" = 1'-0"

**KEYED WORK NOTES:**

- 1 PROVIDE ROCKER SWITCH FOR UNDERCABINET TASK LIGHT. COORDINATE WITH ARCHITECT FOR FINAL FIXTURE MANUFACTURER AND MODEL.
- 2 SEE WIRING DIAGRAM, DETAIL# 3/E-401.00 FOR MORE INFORMATION.

**LIGHTING DRAWING NOTES:**

- 1. REFER TO DWG. E-001.00 FOR ELECTRICAL GENERAL NOTES, SYMBOL LIST & ABBREVIATIONS, DWG. E-003.00 & E-004.00 FOR ELECTRICAL SPECIFICATIONS.
- 2. CIRCUITING FOR LIGHTING FIXTURES IN ROOMS WITH TOGGLE SWITCHES SHALL BE CONTROLLED BY DESIGNATED SWITCHES. IF SPECIFIC DESIGNATION IS NOT INDICATED, ALL LIGHTING FIXTURES IN ROOM/AREA SHALL BE CONTROLLED BY THE SWITCH INDICATED.
- 3. REFER DWG E-002.00 FOR LIGHT FIXTURE SCHEDULE & LIGHTING CONTROL SCHEDULE.
- 4. ALL BRANCH CIRCUITS LOCATED IN THIS AREA SHALL BE CIRCUITED TO PANEL "HP-C", CIRCUIT NUMBERS INDICATED, U.O.N.
- 5. LIGHT FIXTURES CIRCUITED AS "E2" ON PLANS ARE FED FROM EMERGENCY INVERTER. REFER DETAIL# 3/E-401.00 FOR MORE INFORMATION.



Property of Engineers

ALL BRANCH CIRCUITS LOCATED IN THIS AREA SHALL BE CIRCUITED TO PANEL "AP-6D", CIRCUIT NUMBERS INDICATED, U.O.N.

ALL BRANCH CIRCUITS LOCATED IN THIS AREA SHALL BE CIRCUITED TO PANEL "AP-6C", CIRCUIT NUMBERS INDICATED, U.O.N.

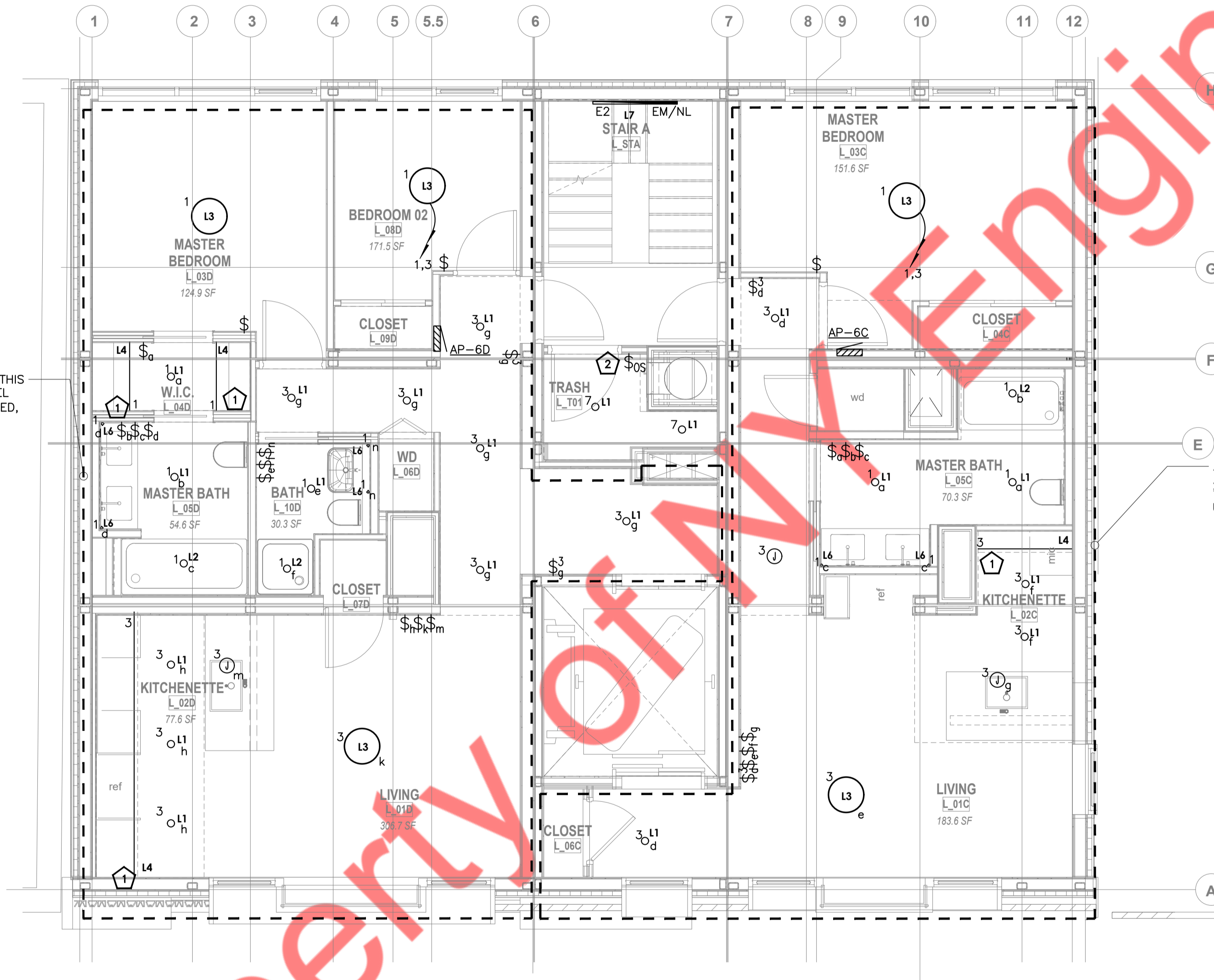
**1 LIGHTING PLAN - 6TH FLOOR**  
1/4" = 1'-0"

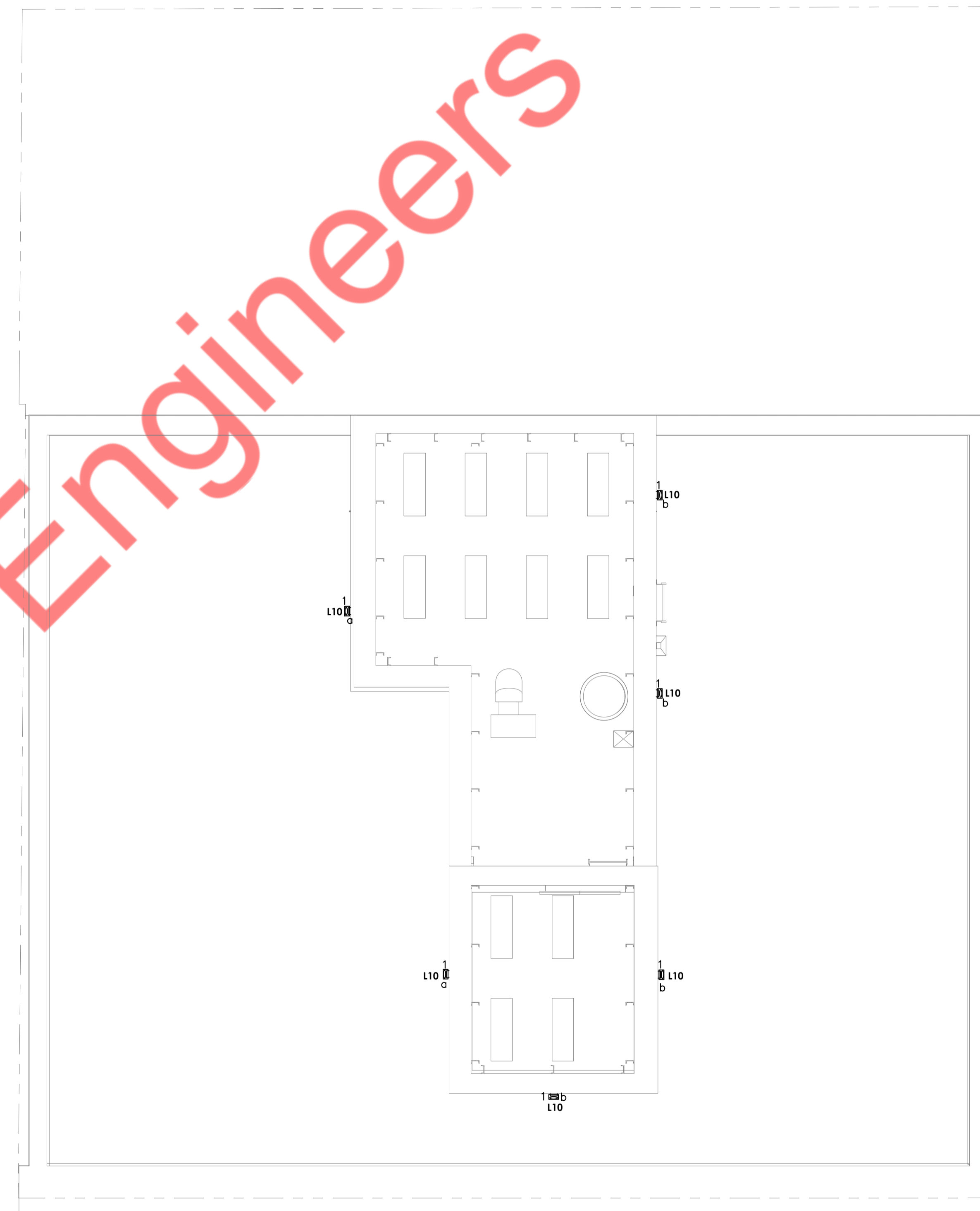
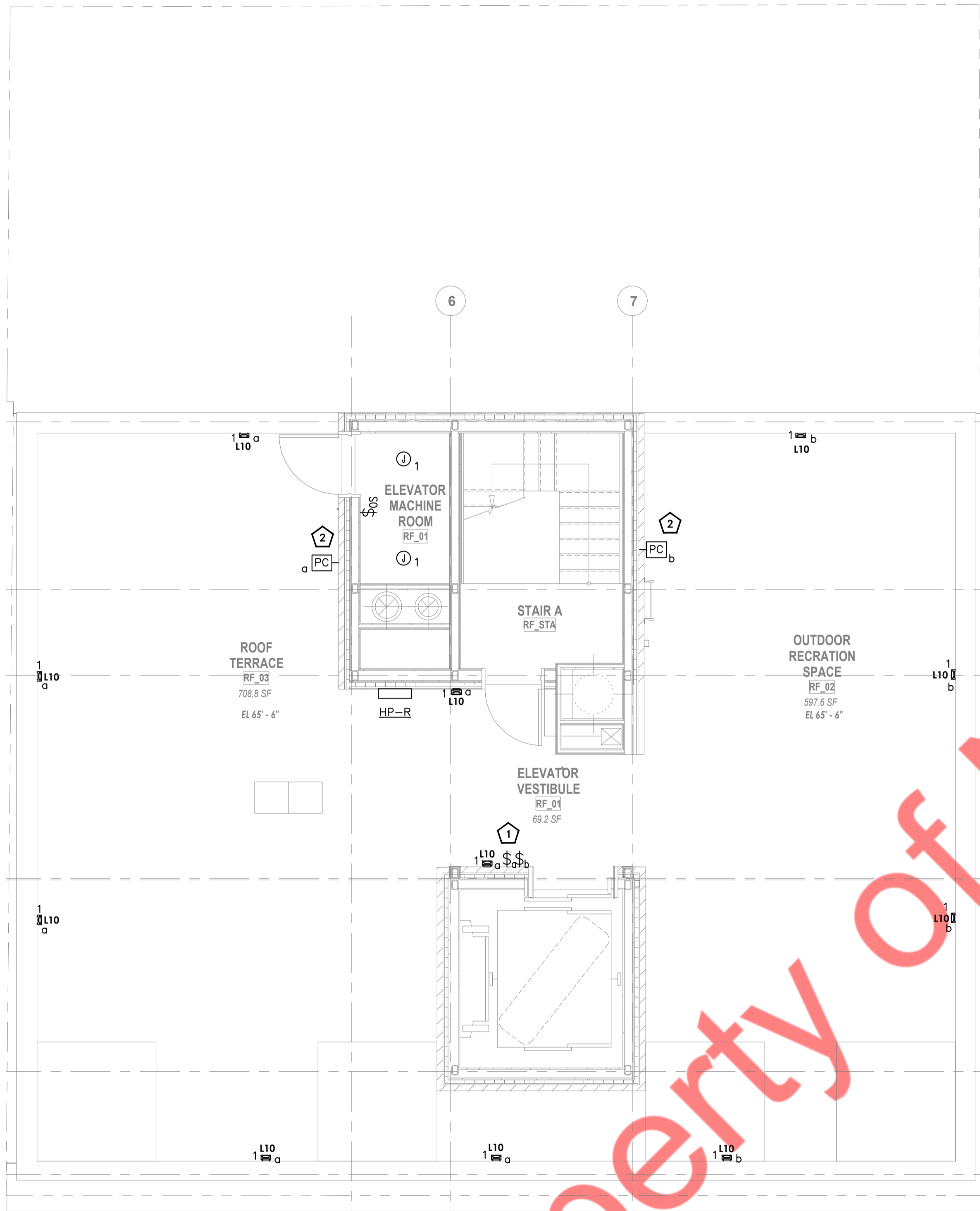
**KEYED WORK NOTES:**

- 1 PROVIDE ROCKER SWITCH FOR UNDERCABINET TASK LIGHT. COORDINATE WITH ARCHITECT FOR FINAL FIXTURE MANUFACTURER AND MODEL.
- 2 SEE WIRING DIAGRAM, DETAIL# 3/E-401.00 FOR MORE INFORMATION.

**LIGHTING DRAWING NOTES:**

- 1. REFER TO DWG. E-001.00 FOR ELECTRICAL GENERAL NOTES, SYMBOL LIST & ABBREVIATIONS, DWG. E-003.00 & E-004.00 FOR ELECTRICAL SPECIFICATIONS.
- 2. CIRCUITING FOR LIGHTING FIXTURES IN ROOMS WITH TOGGLE SWITCHES SHALL BE CONTROLLED BY DESIGNATED SWITCHES. IF SPECIFIC DESIGNATION IS NOT INDICATED, ALL LIGHTING FIXTURES IN ROOM/AREA SHALL BE CONTROLLED BY THE SWITCH INDICATED.
- 3. REFER DWG E-002.00 FOR LIGHT FIXTURE SCHEDULE & LIGHTING CONTROL SCHEDULE.
- 4. ALL BRANCH CIRCUITS LOCATED IN THIS AREA SHALL BE CIRCUITED TO PANEL "HP-C", CIRCUIT NUMBERS INDICATED, U.O.N.
- 5. LIGHT FIXTURES CIRCUITED AS "E2" ON PLANS ARE FED FROM EMERGENCY INVERTER. REFER DETAIL# 3/E-401.00 FOR MORE INFORMATION.





1 LIGHTING PLAN - ROOF  
1/4" = 1'-0"

2 LIGHTING PLAN - BULKHEAD  
1/4" = 1'-0"

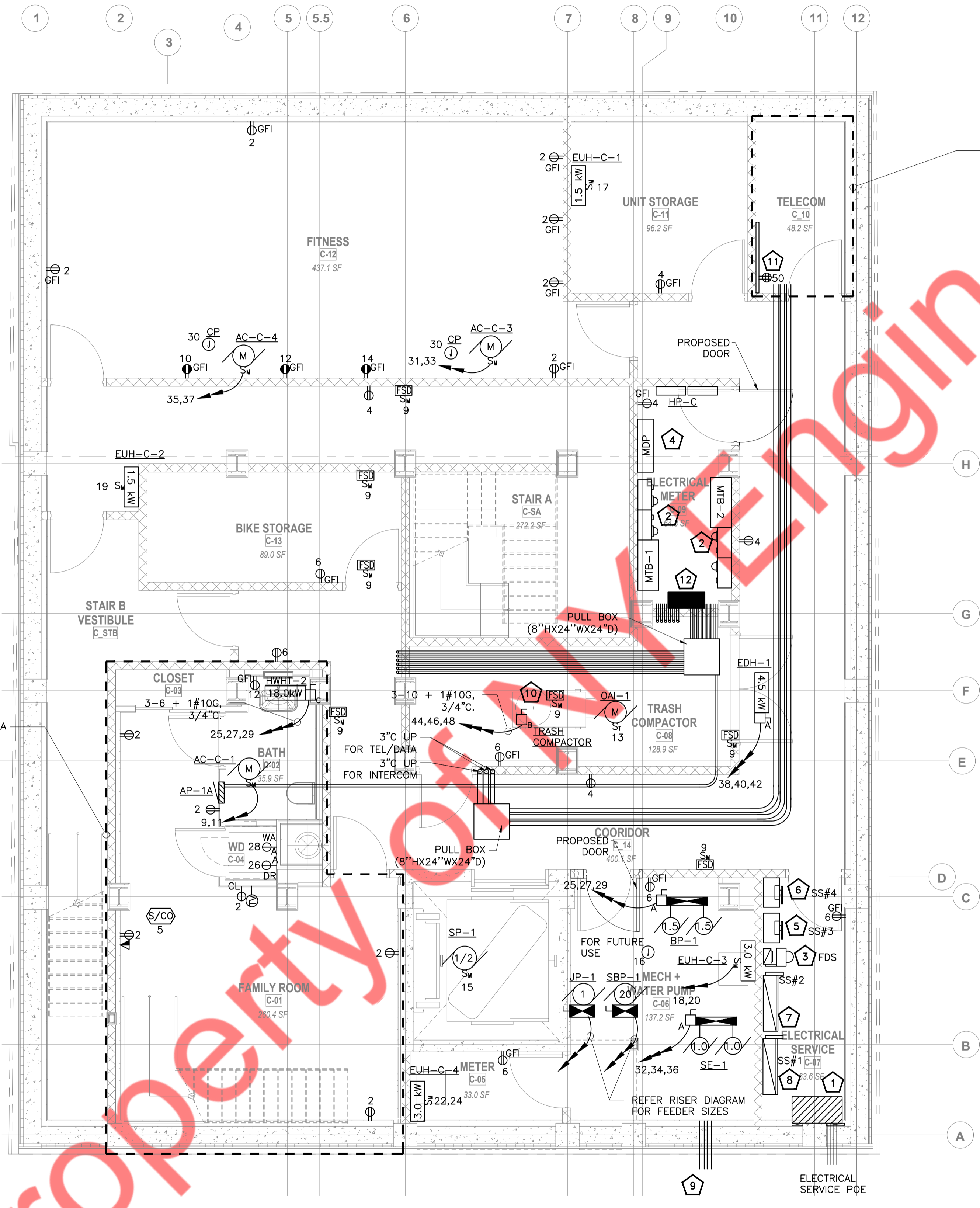
Property of ANY Engineers

**KEYED WORK NOTES:**

- 1 SWITCHES SHALL BE WEATHER PROOF, NEMA 3R RATED.
- 2 SEE WIRING DIAGRAM, DETAIL# 5/E-401.00 FOR MORE INFORMATION.

**LIGHTING DRAWING NOTES:**

1. REFER TO DWG. E-001.00 FOR ELECTRICAL GENERAL NOTES, SYMBOL LIST & ABBREVIATIONS, DWG. E-003.00 & E-004.00 FOR ELECTRICAL SPECIFICATIONS.
2. CIRCUITING FOR LIGHTING FIXTURES IN ROOMS WITH TOGGLE SWITCHES SHALL BE CONTROLLED BY DESIGNATED SWITCHES. IF SPECIFIC DESIGNATION IS NOT INDICATED, ALL LIGHTING FIXTURES IN ROOM/AREA SHALL BE CONTROLLED BY THE SWITCH INDICATED.
3. REFER DWG E-002.00 FOR LIGHT FIXTURE SCHEDULE & LIGHTING CONTROL SCHEDULE.
4. ALL BRANCH CIRCUITS LOCATED IN THIS AREA SHALL BE CIRCUITED TO PANEL "HP-R", CIRCUIT



ALL BRANCH CIRCUITS LOCATED IN THIS AREA SHALL BE CIRCUITED TO PANEL "AP-1A", CIRCUIT NUMBERS INDICATED, U.O.N.

- KEYED WORK NOTES:**
- 1 SERVICE END BOX CON-ED SPEC EO-9073-B.
  - 2 METER BANK.
  - 3 D.S. & METER FOR FIRE ALARM CONTROL PANEL STACKED.
  - 4 MAIN DISTRIBUTION PANEL.
  - 5 TRANS-S SWITCH & METER COMBINATION UNIT FOR HOUSE.
  - 6 TRANS-S SWITCH & METER COMBINATION UNIT FOR SPRINKLER BOOSTER PUMP.
  - 7 800A DISCONNECT SWITCH
  - 8 800A DISCONNECT SWITCH
  - 9 ELECTRICAL CONTRACTOR TO RUN (2) 4" CONDUIT UPTO TELECOM ROOM.
  - 10 CONTRACTOR TO CONFIRM FINAL ELECTRICAL SPECIFICATION WITH MANUFACTURE.
  - 11 3/4" FIRE RATED PLYWOOD BACKING FOR VIDEO INTERCOM EQUIPMENT REFER TO DETAIL 3/E-402.00
  - 12 CENTRAL LIGHTING INVERTER FOR EMERGENCY LIGHTS.ILLUMINATOR EM SERIES 2.2 kVA BY MYERS POWER PRODUCT. SEE DETAILS 4/E-402.00

1 POWER PLAN -CELLAR  
1/4"=1'-0"

- POWER DRAWING NOTES:**
1. ALL BRANCH CIRCUITS HOMERUNS ASSIGN INDICATED ON THIS PLAN SHALL BE CIRCUITED TO PANEL AS MENTIONED ON PLANS, CIRCUIT NUMBER INDICATED, U.O.N.
  2. REFER TO DWG. E-001.00 FOR ELECTRICAL GENERAL NOTES, SYMBOL LIST & ABBREVIATIONS. E-003 & E-004 FOR ADDITIONAL ELECTRICAL SPECIFICATIONS.
  3. ALL BRANCH CIRCUITS LOCATED IN THIS AREA SHALL BE CIRCUITED TO PANEL "HP-C", CIRCUIT NUMBERS INDICATED, U.O.N.

ALL BRANCH CIRCUITS LOCATED IN THIS AREA SHALL BE CIRCUITED TO PANEL "AP-1A", CIRCUIT NUMBERS INDICATED, U.O.N.

ALL BRANCH CIRCUITS LOCATED IN THIS AREA SHALL BE CIRCUITED TO PANEL "AP-1B", CIRCUIT NUMBERS INDICATED, U.O.N.

1 POWER PLAN - 1ST FLOOR  
1/4" = 1'-0"

KEYED WORK NOTES:

- 1 ELECTRICAL CONTRACTOR TO CONFIRM EXACT LOCATION OF TV RECEPTACLE.
- 2 REFER DETAIL# 1/E-402.00 FOR MORE INFORMATION.

POWER DRAWING NOTES:

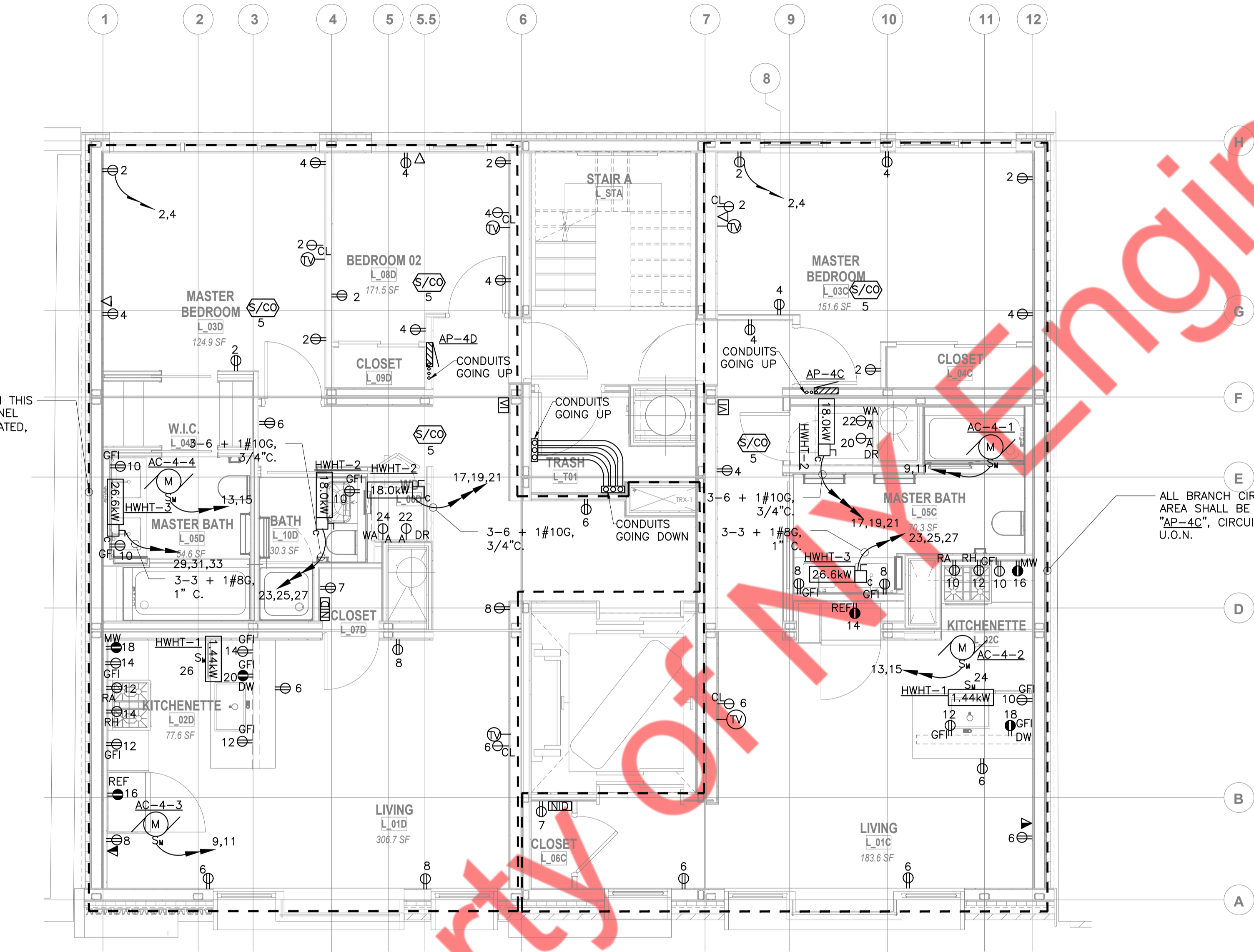
- 1. ALL BRANCH CIRCUITS HOMERUNS ASSIGN INDICATED ON THIS PLAN SHALL BE CIRCUITED TO PANEL AS MENTIONED ON PLANS, CIRCUIT NUMBER INDICATED, U.O.N.
- 2. REFER TO DWG. E-001.00 FOR ELECTRICAL GENERAL NOTES, SYMBOL LIST & ABBREVIATIONS. E-003 & E-004 FOR ADDITIONAL ELECTRICAL SPECIFICATIONS.
- 3. ALL BRANCH CIRCUITS LOCATED IN THIS AREA SHALL BE CIRCUITED TO PANEL "HP-C", CIRCUIT NUMBERS INDICATED, U.O.N.





ALL BRANCH CIRCUITS LOCATED IN THIS AREA SHALL BE CIRCUITED TO PANEL "AP-4D", CIRCUIT NUMBERS INDICATED, U.O.N.

ALL BRANCH CIRCUITS LOCATED IN THIS AREA SHALL BE CIRCUITED TO PANEL "AP-4C", CIRCUIT NUMBERS INDICATED, U.O.N.



1 POWER PLAN - 2ND TO 4TH FLOOR (TYPICAL)  
1/4" = 1'-0"

**POWER DRAWING NOTES:**

1. ALL BRANCH CIRCUITS HOMERUNS ASSIGN INDICATED ON THIS PLAN SHALL BE CIRCUITED TO PANEL AS MENTIONED ON PLANS, CIRCUIT NUMBER INDICATED, U.O.N.
2. REFER TO DWG. E-001.00 FOR ELECTRICAL GENERAL NOTES, SYMBOL LIST & ABBREVIATIONS. E-003 & E-004 FOR ADDITIONAL ELECTRICAL SPECIFICATIONS.
3. ALL BRANCH CIRCUITS LOCATED IN THIS AREA SHALL BE CIRCUITED TO PANEL "HP-C", CIRCUIT NUMBERS INDICATED, U.O.N.

ALL BRANCH CIRCUITS LOCATED IN THIS AREA SHALL BE CIRCUITED TO PANEL "AP-5D", CIRCUIT NUMBERS INDICATED, U.O.N.

ALL BRANCH CIRCUITS LOCATED IN THIS AREA SHALL BE CIRCUITED TO PANEL "AP-5C", CIRCUIT NUMBERS INDICATED, U.O.N.

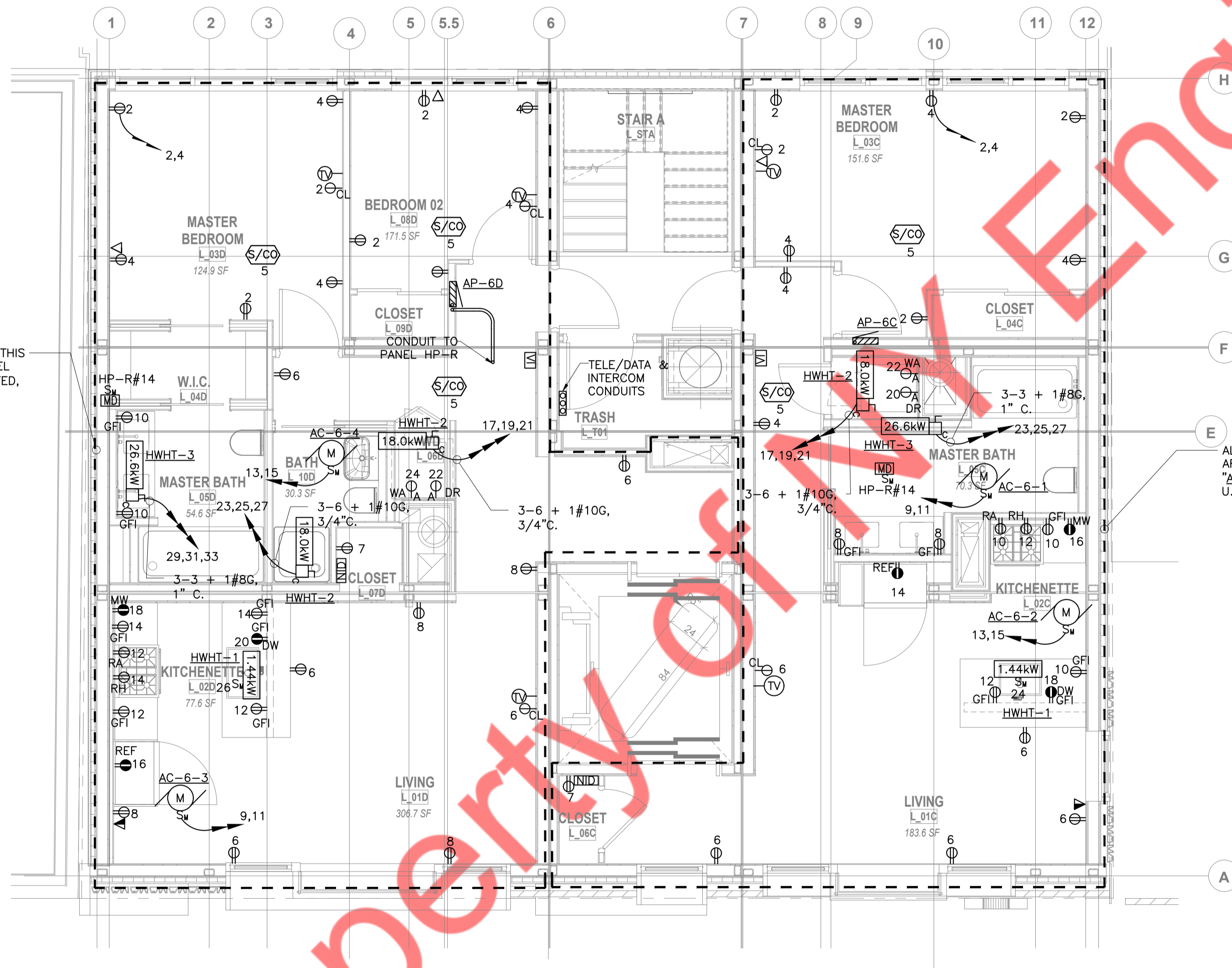
1 POWER PLAN - 5TH FLOOR  
1/4" = 1'-0"

POWER DRAWING NOTES:

1. ALL BRANCH CIRCUITS HOMERUNS ASSIGN INDICATED ON THIS PLAN SHALL BE CIRCUITED TO PANEL AS MENTIONED ON PLANS, CIRCUIT NUMBER INDICATED, U.O.N.
2. REFER TO DWG. E-001.00 FOR ELECTRICAL GENERAL NOTES, SYMBOL LIST & ABBREVIATIONS. E-003 & E-004 FOR ADDITIONAL ELECTRICAL SPECIFICATIONS.
3. ALL BRANCH CIRCUITS LOCATED IN THIS AREA SHALL BE CIRCUITED TO PANEL "HP-B", CIRCUIT NUMBERS INDICATED, U.O.N.

ALL BRANCH CIRCUITS LOCATED IN THIS AREA SHALL BE CIRCUITED TO PANEL "AP-6D", CIRCUIT NUMBERS INDICATED, U.O.N.

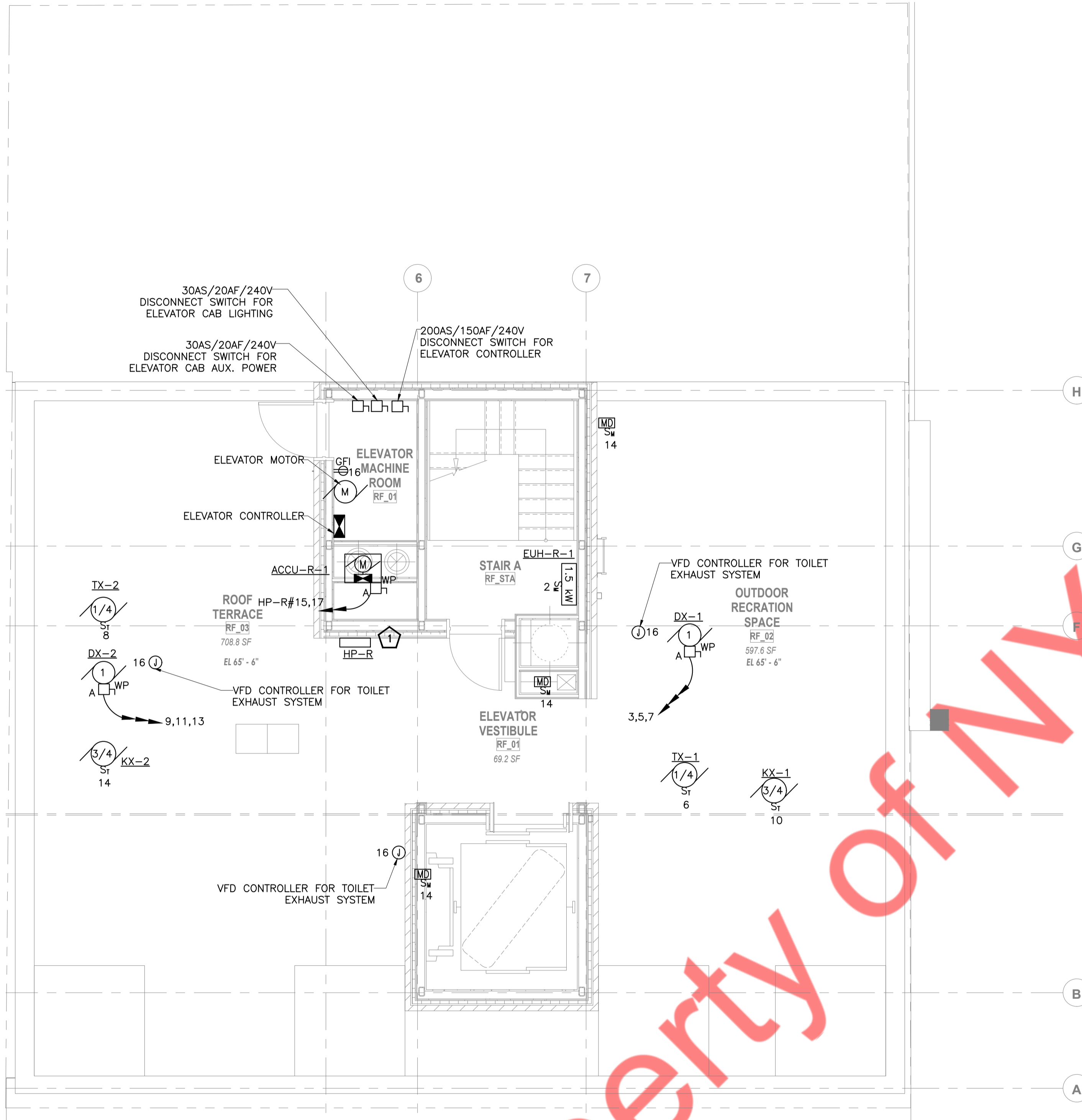
ALL BRANCH CIRCUITS LOCATED IN THIS AREA SHALL BE CIRCUITED TO PANEL "AP-6C", CIRCUIT NUMBERS INDICATED, U.O.N.



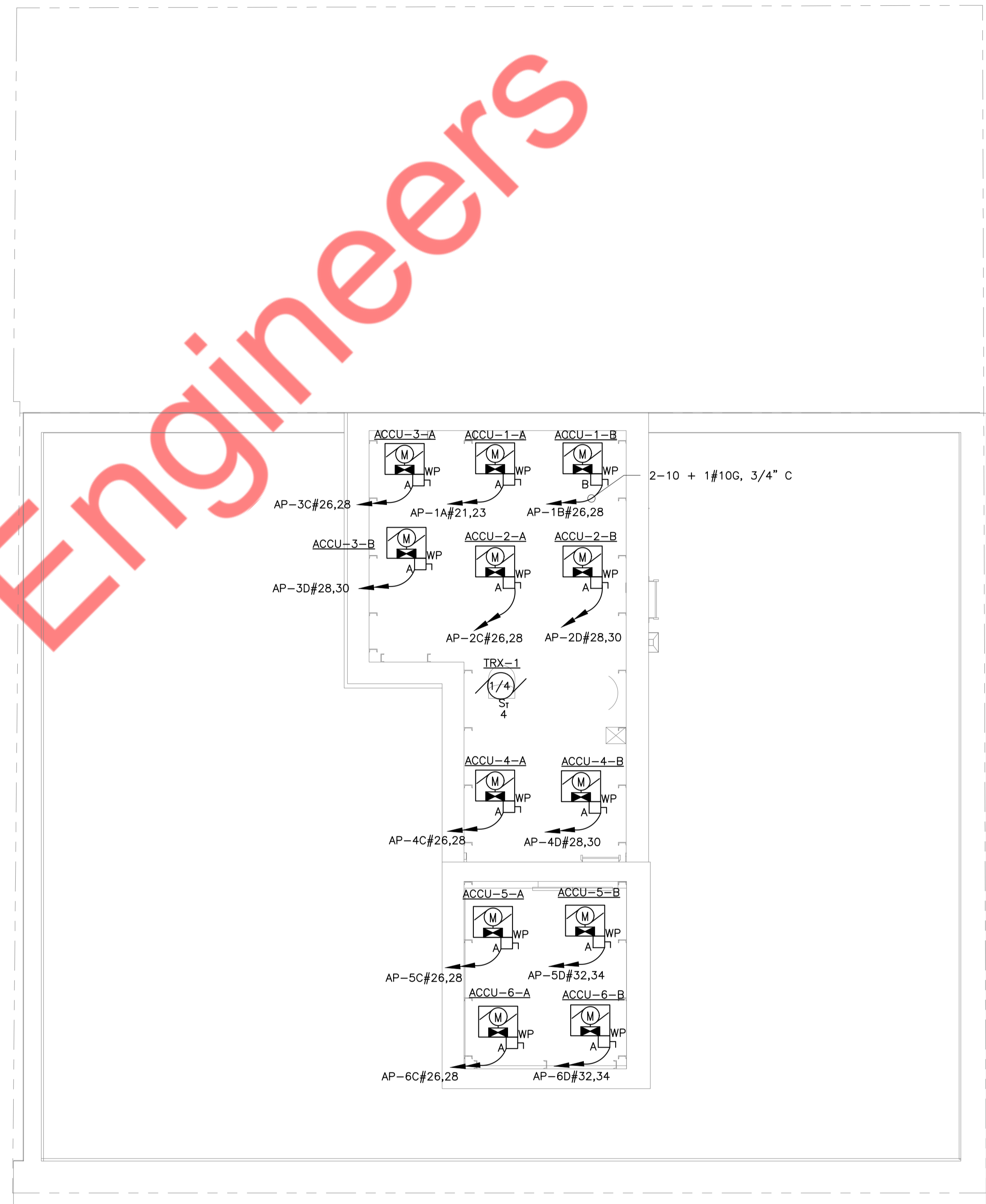
1 POWER PLAN - 6TH FLOOR  
1/4" = 1'-0"

**POWER DRAWING NOTES:**

1. ALL BRANCH CIRCUITS HOMERUNS ASSIGN INDICATED ON THIS PLAN SHALL BE CIRCUITED TO PANEL AS MENTIONED ON PLANS, CIRCUIT NUMBER INDICATED, U.O.N.
2. REFER TO DWG. E-001.00 FOR ELECTRICAL GENERAL NOTES, SYMBOL LIST & ABBREVIATIONS. E-003 & E-004 FOR ADDITIONAL ELECTRICAL SPECIFICATIONS.
3. ALL BRANCH CIRCUITS LOCATED IN THIS AREA SHALL BE CIRCUITED TO PANEL "HP-R", CIRCUIT NUMBERS INDICATED, U.O.N.



1 POWER PLAN - ROOF  
1/4" = 1'-0"



2 POWER PLAN - BULKHEAD  
1/4" = 1'-0"

KEYED WORK NOTES:

- 1 PROVIDE NEMA 3R ENCLOSURE FOR PANEL.

POWER DRAWING NOTES:

- ALL BRANCH CIRCUITS HOMERUNS ASSIGN INDICATED ON THIS PLAN SHALL BE CIRCUITED TO PANEL AS MENTIONED ON PLANS, CIRCUIT NUMBER INDICATED, U.O.N.
- REFER TO DWG. E-001.00 FOR ELECTRICAL GENERAL NOTES, SYMBOL LIST & ABBREVIATIONS. E-003 & E-004 FOR ADDITIONAL ELECTRICAL SPECIFICATIONS.
- ALL BRANCH CIRCUITS LOCATED IN THIS AREA SHALL BE CIRCUITED TO PANEL "HP-R", CIRCUIT NUMBERS INDICATED, U.O.N.