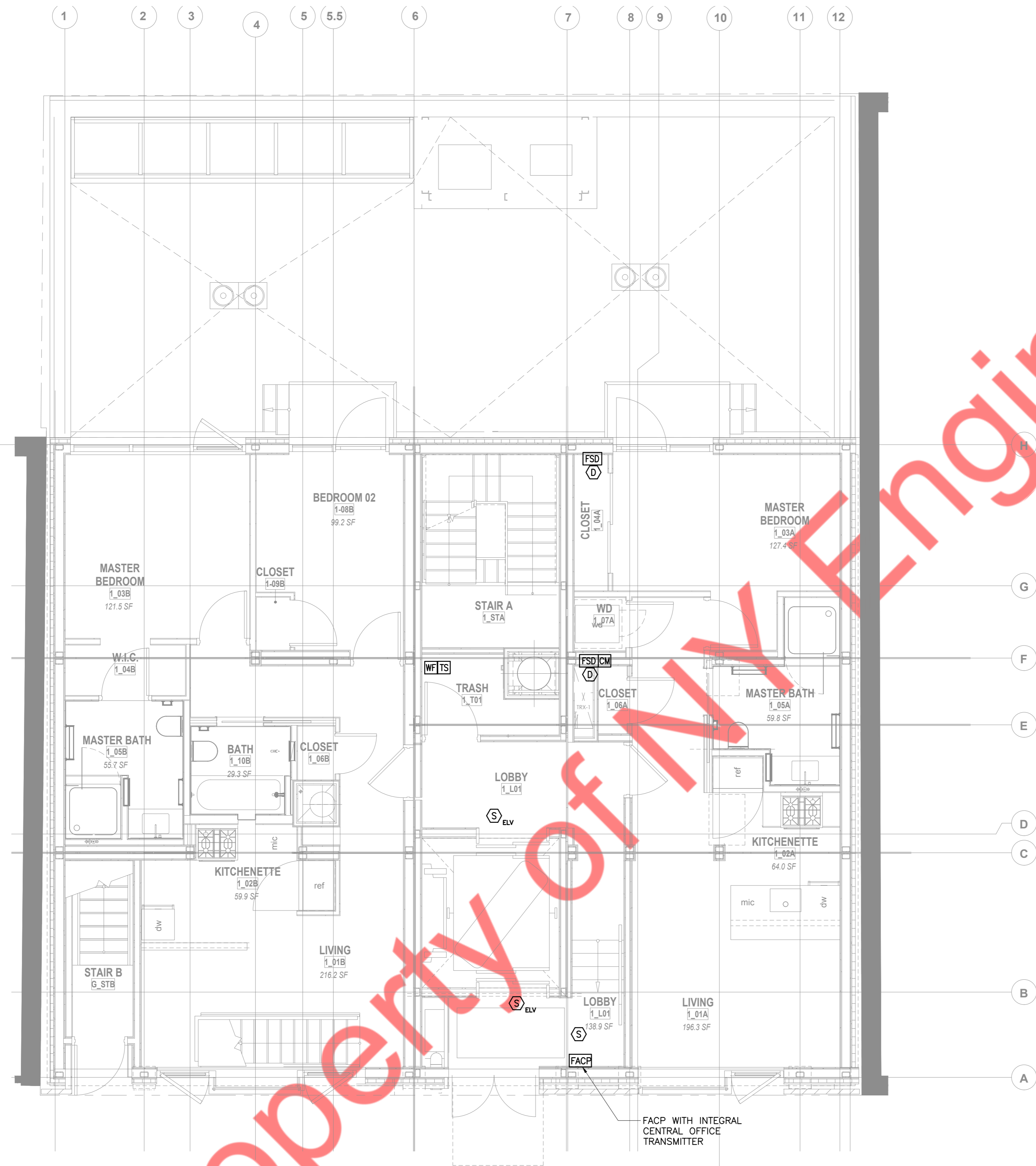


**FIRE ALARM PLAN - CELLAR**  
1/4" = 1'-0"

**DRAWING NOTES:**

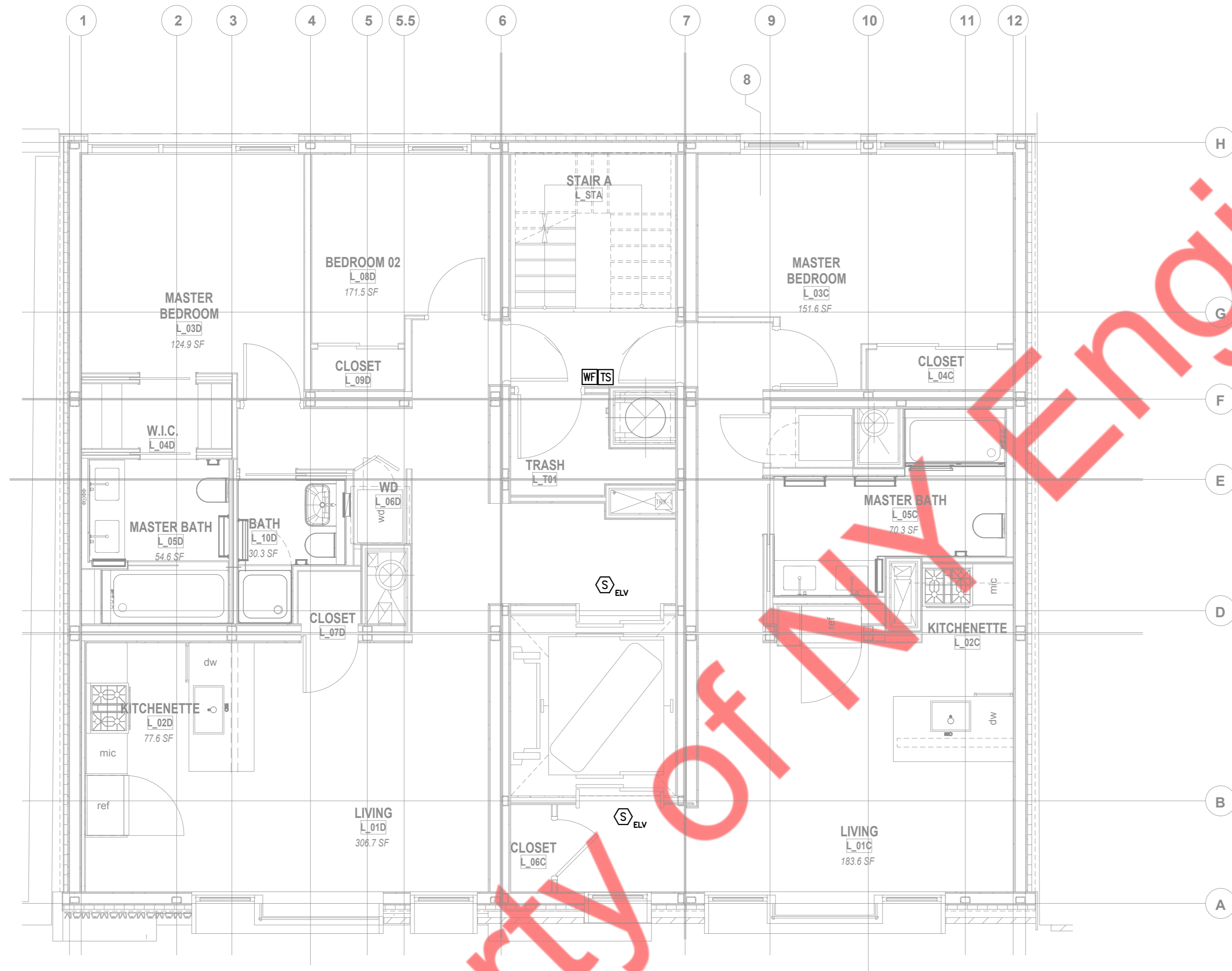
1. REFER TO DWG. FA-001.00 FOR FIRE ALARM NOTES, SYMBOL LIST, ABBREVIATIONS.
2. FINAL CONDUIT/CABLE ROUTING SHALL BE DETERMINED IN-FIELD, AND PRIOR TO THE COMMENCEMENT OF WORK, COORDINATED WITH OTHER TRADE CONTRACTORS AND THE OWNER.



**FIRE ALARM PLAN - 1ST FLOOR**  
 1/4" = 1'-0"

**DRAWING NOTES:**

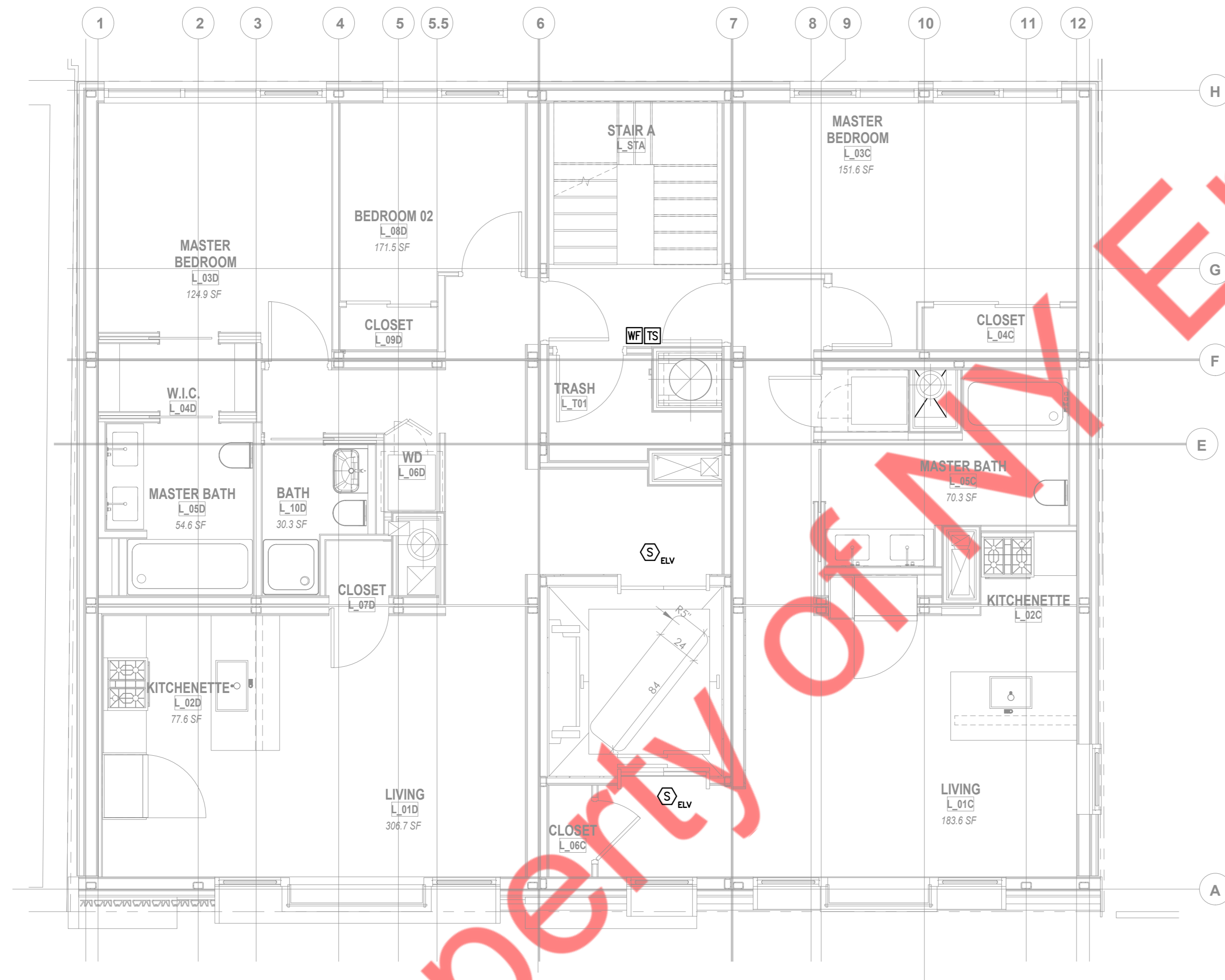
1. REFER TO DWG. FA-001.00 FOR FIRE ALARM NOTES, SYMBOL LIST, ABBREVIATIONS.
2. FINAL CONDUIT/CABLE ROUTING SHALL BE DETERMINED IN-FIELD, AND PRIOR TO THE COMMENCEMENT OF WORK, COORDINATED WITH OTHER TRADE CONTRACTORS AND THE OWNER.



**FIRE ALARM PLAN - 2ND TO 4TH FLOOR (TYPICAL)**  
 1/4" = 1'-0"

**DRAWING NOTES:**

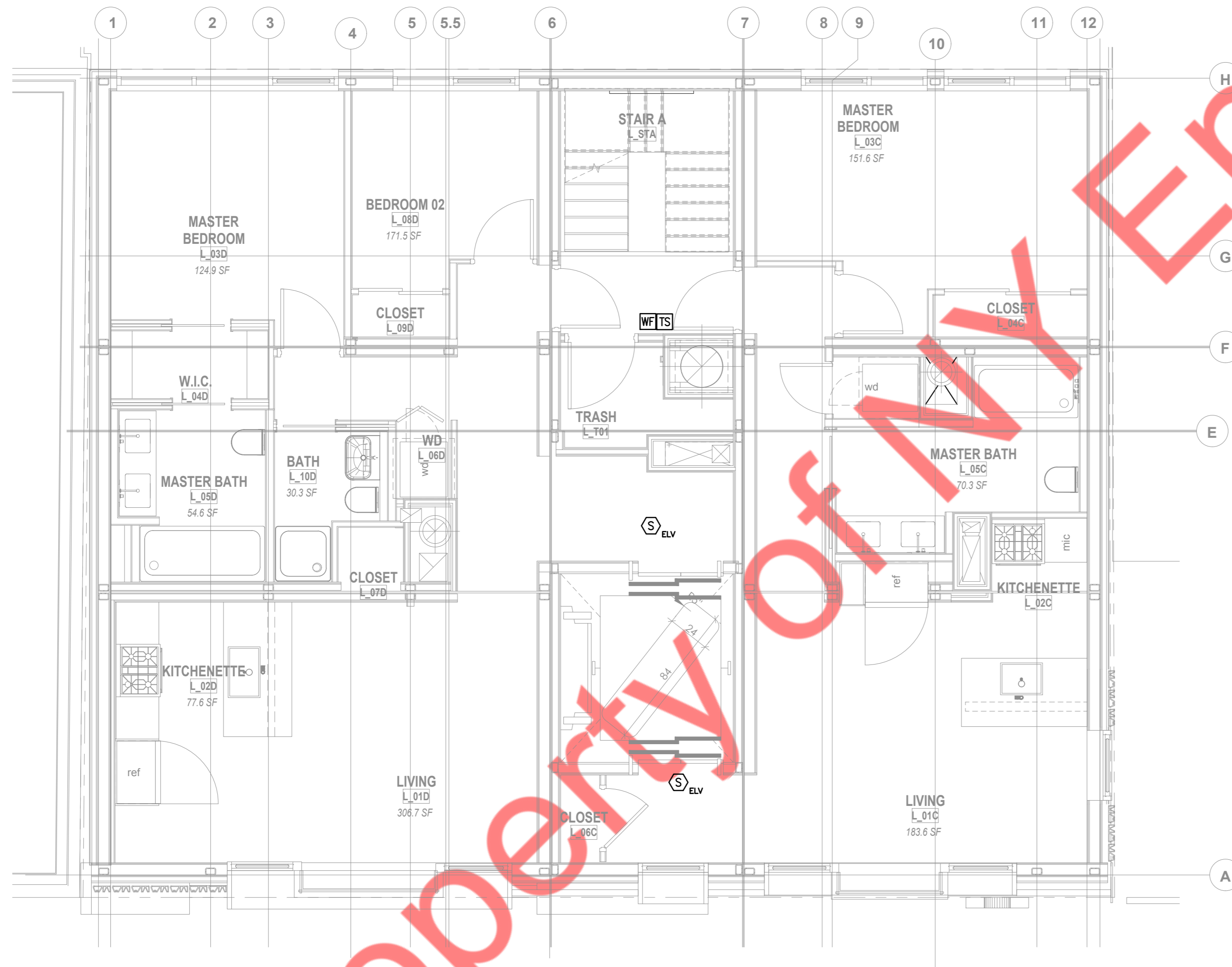
1. REFER TO DWG. FA-001.00 FOR FIRE ALARM NOTES, SYMBOL LIST, ABBREVIATIONS.
2. FINAL CONDUIT/CABLE ROUTING SHALL BE DETERMINED IN-FIELD, AND PRIOR TO THE COMMENCEMENT OF WORK, COORDINATED WITH OTHER TRADE CONTRACTORS AND THE OWNER.



**FIRE ALARM PLAN -5H FLOOR**  
 1/4" = 1'-0"

**DRAWING NOTES:**

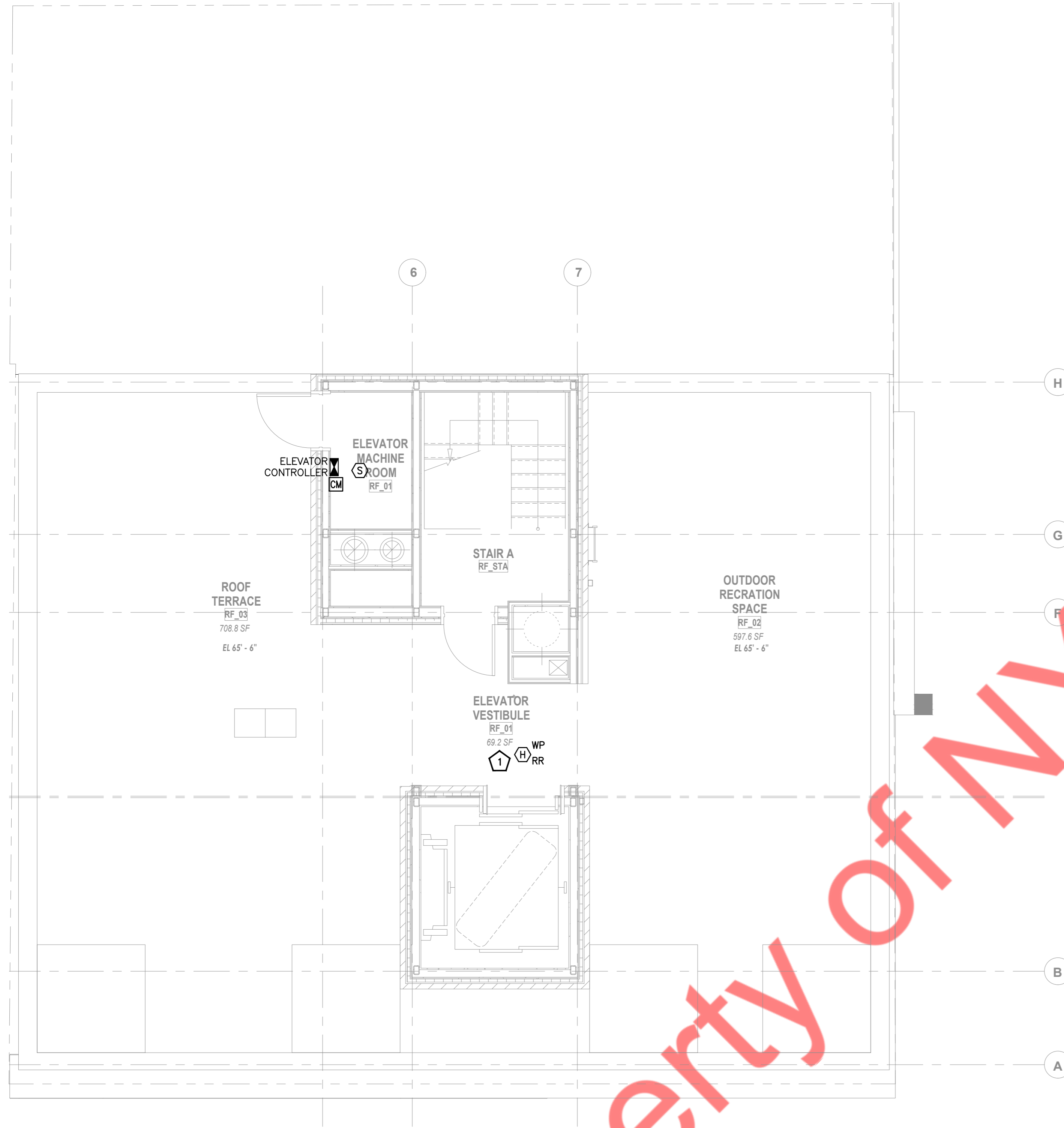
1. REFER TO DWG. FA-001.00 FOR FIRE ALARM NOTES, SYMBOL LIST, ABBREVIATIONS.
2. FINAL CONDUIT/CABLE ROUTING SHALL BE DETERMINED IN-FIELD, AND PRIOR TO THE COMMENCEMENT OF WORK, COORDINATED WITH OTHER TRADE CONTRACTORS AND THE OWNER.



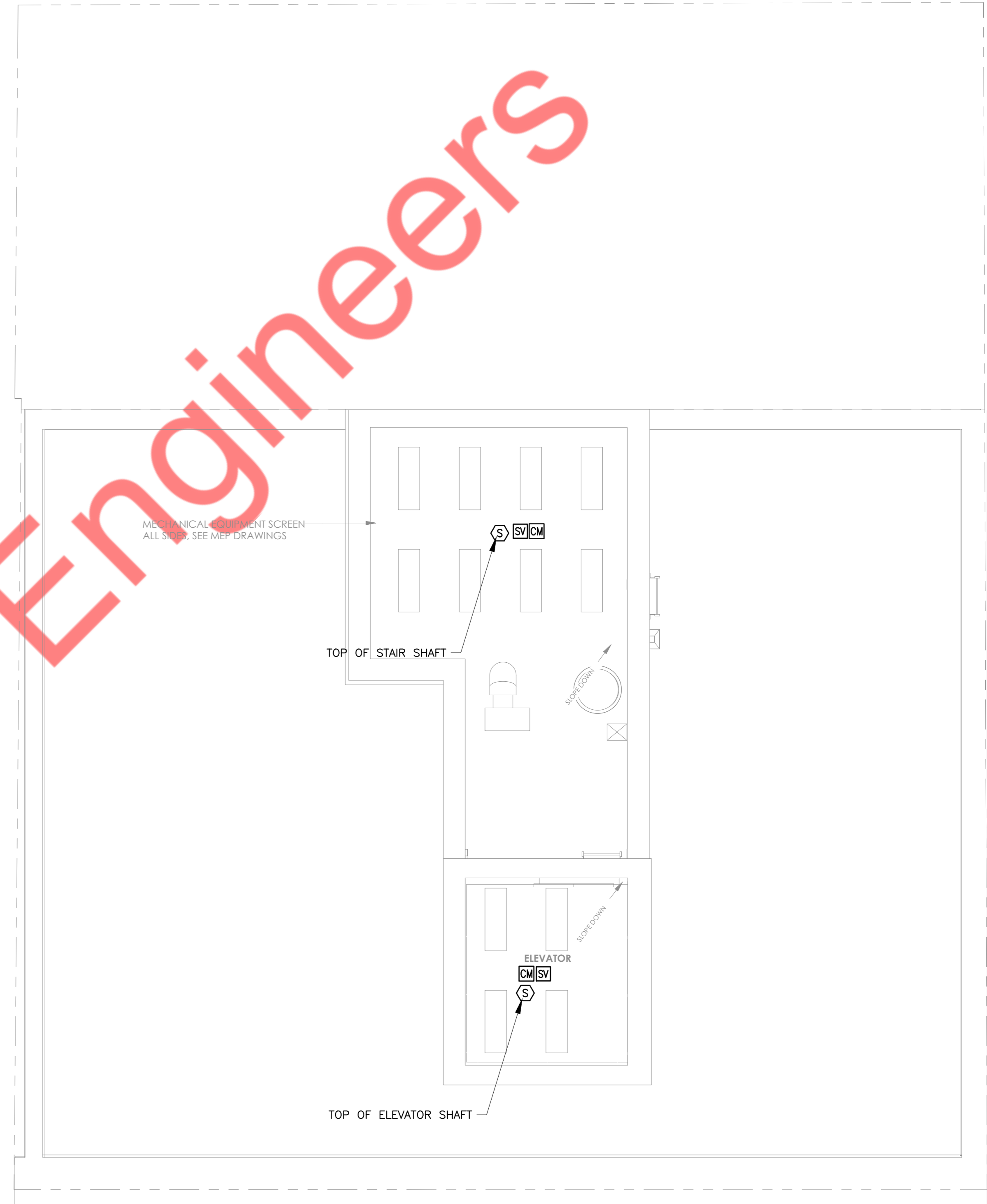
**FIRE ALARM PLAN - 6TH FLOOR**  
 1/4" = 1'-0"

**DRAWING NOTES:**

1. REFER TO DWG. FA-001.00 FOR FIRE ALARM NOTES, SYMBOL LIST, ABBREVIATIONS.
2. FINAL CONDUIT/CABLE ROUTING SHALL BE DETERMINED IN-FIELD, AND PRIOR TO THE COMMENCEMENT OF WORK, COORDINATED WITH OTHER TRADE CONTRACTORS AND THE OWNER.



**FIRE ALARM PLAN - ROOF**  
1/4" = 1'-0"



**FIRE ALARM PLAN - BULKHEAD**  
1/4" = 1'-0"

**KEYED WORK NOTES:**

- 1. HEAT DETECTOR SHALL BE MOISTURE & DUSTPROOF, UL LISTED FOR OUTDOOR INSTALLATION. NOTIFIER MODEL FST-851R OR APPROVED EQUAL.

**DRAWING NOTES:**

- 1. REFER TO DWG. FA-001.00 FOR FIRE ALARM NOTES, SYMBOL LIST, ABBREVIATIONS.
- 2. FINAL CONDUIT/CABLE ROUTING SHALL BE DETERMINED IN-FIELD, AND PRIOR TO THE COMMENCEMENT OF WORK, COORDINATED WITH OTHER TRADE CONTRACTORS AND THE OWNER.