

- PLENUM BOX
- AC-C-1
1.5 TON
- 6X6 TX
[25]
UP
- 14"Ø DX
[200]
UP
- 1½" CD
FROM ABOVE
- PROVIDE UNOBSTRUCTED
LOUVERED OPENING,
20X6 (COORDINATE FINAL
LOCATION W/ARCH)
- 4"Ø RIGID DRYER
EXHAUST DUCT
PROVIDE STRAP AT
CONNECTION
TO DRYER MACHINE
VENT
- PLENUM BOX
- 18X18
2HR FIRE RATED
ACCESS DOOR
FOR DRYER
CLEAN OUT
- 8" UP
W/ W.M.S

- REF 2 FROM ABOVE
SERVING
AC-C-2,
AC-C-3 AND
AC-C-4
- OAI 1 12X8
(400)
UP
- REF 1 FROM ABOVE
SERVING
AC-C-1
- TRX 1 10X8
[300]
UP

KEY NOTES:

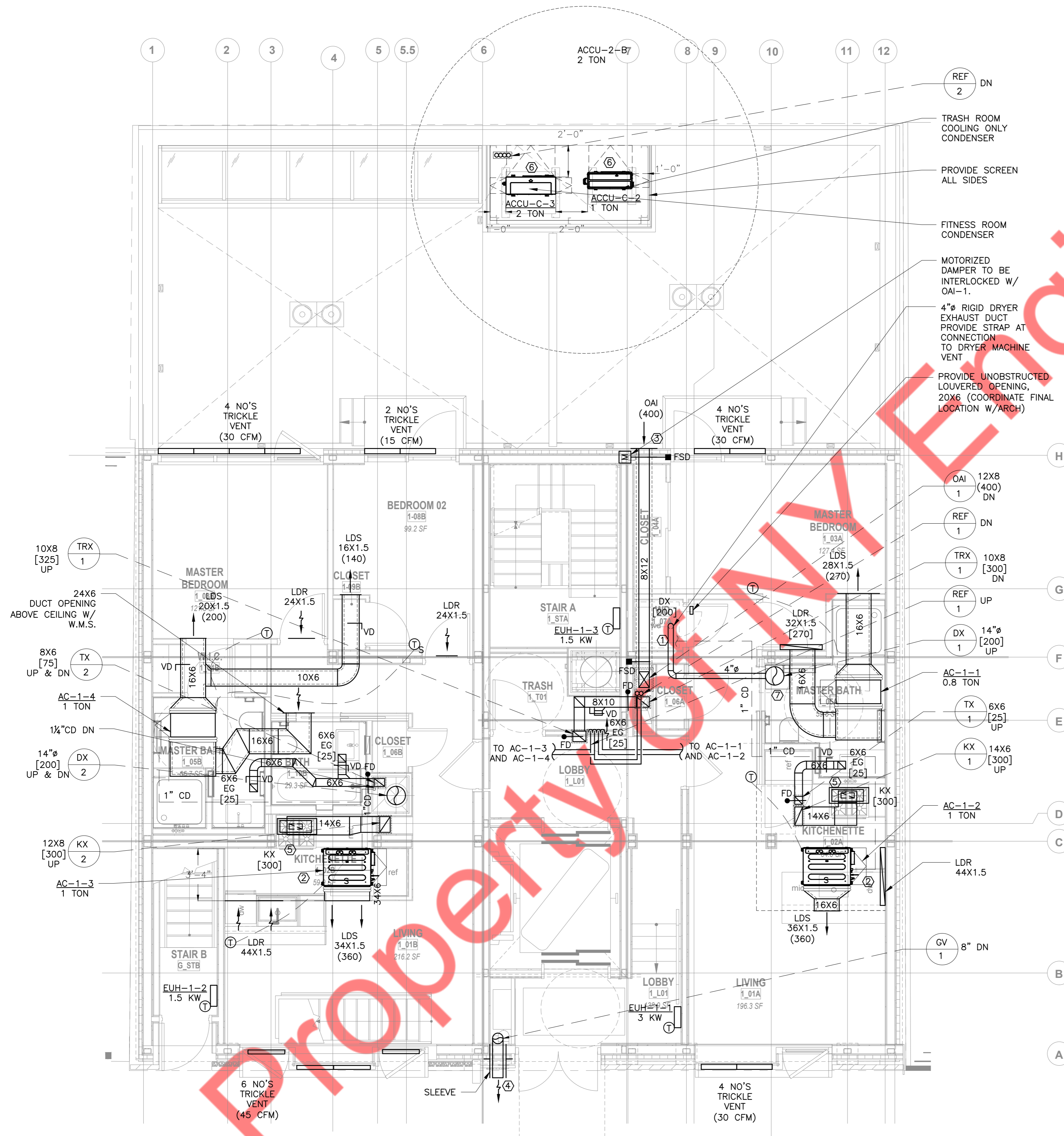
① 1" CD TO NEAREST FLOOR DRAIN W/ AIR GAP. COORDINATE W/ PLUMBING DRAWING.

NOTES:

- 1) PROVIDE CLEAN OUT AT BOTTOM OF DRYER EXHAUST DUCTWORK RISER.
- 2) PROVIDE 2" INSULATION FOR OAI DUCT.
- 3) OUTDOOR AIR INTAKE, EXHAUST OPENINGS, STAIRWAY AND SHAFT VENTS SHALL BE PROVIDED WITH CLASS I MOTORIZED DAMPERS. THE DAMPERS SHALL HAVE AN AIR LEAKAGE RATE NOT GREATER THAN 4 CFM/FT² OF DAMPER SURFACE AREA AT 1.0 INCH WATER GAUGE (249 PA) AND SHALL BE LABELED BY AN APPROVED AGENCY WHEN TESTED IN ACCORDANCE WITH AMCA 500D.

① MECHANICAL PLAN - CELLAR
1/4" = 1'-0"

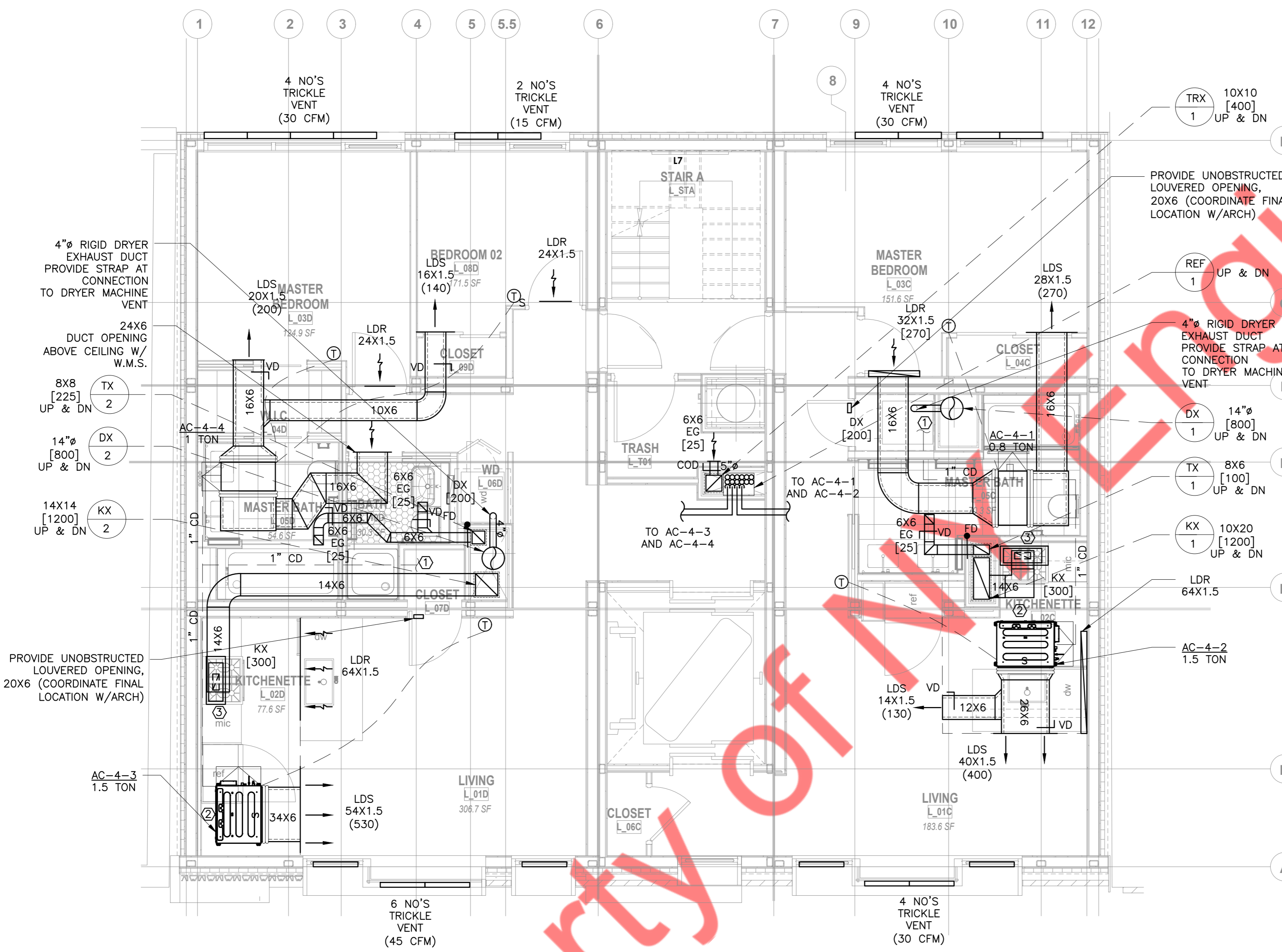
Property of Y Engineers



Property Engineers

- KEY NOTES:**
- ① 1" CD TO NEAREST FLOOR DRAIN W/ AIR GAP. COORDINATE W/ PLUMBING DRAWING.
 - ② CEILING AS RETURN PLENUM.
 - ③ 20X12 OAI LOUVER SHALL BE 10 FEET ABOVE GRADE, 10 FEET AWAY FROM LOTLINE AND ANY EXHAUST.
 - ④ PROVIDE PERFORATED PLATE AT SIDEWALL 24" ABOVE GROUND LEVEL W/ FREE AREA NOT LESS THAN 30 SQ. INCHES.
 - ⑤ CONNECT KITCHEN EXHAUST DUCT TO KITCHEN HOOD TO BE SPECIFIED BY ARCHITECT. CONTRACTOR TO COORDINATE SIZE OF CONNECTION WITH FINAL HOOD SELECTION.
 - ⑥ NO ANY RESIDENTIAL WINDOW IN THE AREA OF 11 FEET AROUND THE UNIT TO COMPLY WITH CODE NYC NOISE CONTROL CODE: 24-227, MAINTAIN LESS THAN 45 DECIBELS FOR THE CUMULATIVE NOISE LEVEL OF MULTIPLE AIR CIRCULATING DEVICES AS MEASURED 3 FEET FROM THE NOISE SOURCE AT AN OPEN DOOR OR WINDOW OF A NEARBY RESIDENCE.
 - ⑦ PROVIDE CLEAN OUT AT BOTTOM OF DRYER EXHAUST DUCTWORK RISER W/ 18X18 ACCESS DOOR.
- NOTES:**
- 1) PROVIDE 2" INSULATION FOR OAI DUCT.
 - 2) OUTDOOR AIR INTAKE, EXHAUST OPENINGS, STAIRWAY AND SHAFT VENTS SHALL BE PROVIDED WITH CLASS 1 MOTORIZED DAMPERS. THE DAMPERS SHALL HAVE AN AIR LEAKAGE RATE NOT GREATER THAN 4 CFM/FT² OF DAMPER SURFACE AREA AT 1.0 INCH WATER GAUGE (249 PA) AND SHALL BE LABELED BY AN APPROVED AGENCY WHEN TESTED IN ACCORDANCE WITH AMCA 5000.
 - 3) AIR CONDITIONER UNIT SHALL NOT PRODUCE NOISE LEVELS IN EXCESS OF 42 DECIBELS FOR A SINGLE AIR CIRCULATING DEVICE AND 45 DECIBELS FOR THE CUMULATIVE NOISE LEVEL OF MULTIPLE AIR CIRCULATING DEVICES AS MEASURED 3 FEET FROM THE NOISE SOURCE AT AN OPEN DOOR OR WINDOW OF A NEARBY RESIDENCE.

① MECHANICAL PLAN - 1ST FLOOR
1/4" = 1'-0"



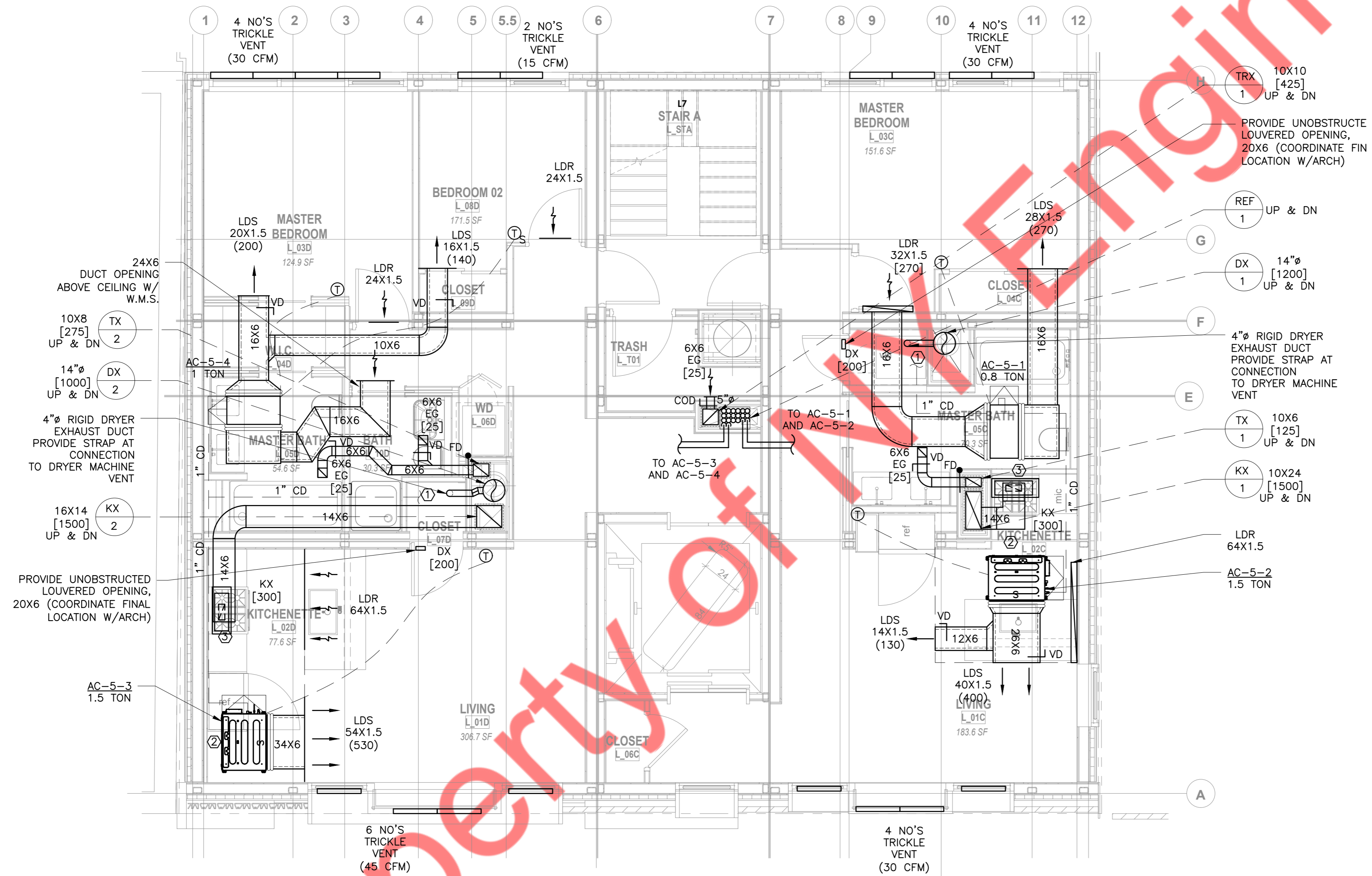
KEY NOTES:

- ① 1" CD TO NEAREST FLOOR DRAIN W/ AIR GAP. COORDINATE W/ PLUMBING DRAWING.
- ② CEILING AS RETURN PLENUM.
- ③ CONNECT KITCHEN EXHAUST DUCT TO KITCHEN HOOD TO BE SPECIFIED BY ARCHITECT.CONTRACTOR TO COORDINATE SIZE OF CONNECTION WITH FINAL HOOD SELECTION.

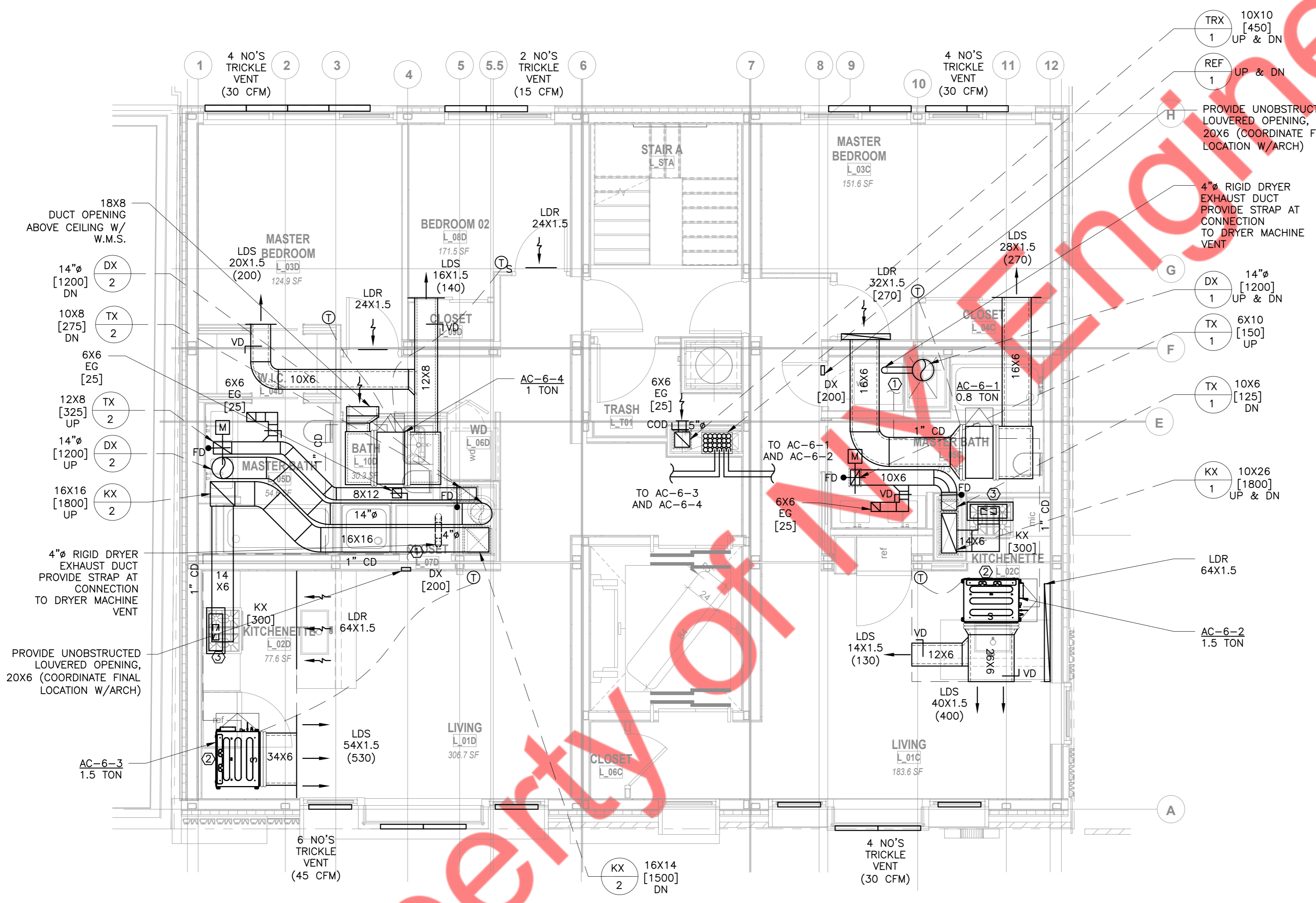
NOTES:

- 1) ALL RISERS SIZES SHOWN ARE AT 4TH FLOOR, REFER AIR RISER DIAGRAM FOR DUCT RISER SIZES.
- 2) OUTDOOR AIR INTAKE, EXHAUST OPENINGS, STAIRWAY AND SHAFT VENTS SHALL BE PROVIDED WITH CLASS I MOTORIZED DAMPERS. THE DAMPERS SHALL HAVE AN AIR LEAKAGE RATE NOT GREATER THAN 4 CFM/FT² OF DAMPER SURFACE AREA AT 1.0 INCH WATER GAUGE (249 PA) AND SHALL BE LABELED BY AN APPROVED AGENCY WHEN TESTED IN ACCORDANCE WITH AMCA 500D.

① MECHANICAL PLAN - 2ND TO 4TH FLOOR (TYPICAL)
1/4" = 1'-0"



1 MECHANICAL PLAN - 5TH FLOOR
1/4" = 1'-0"



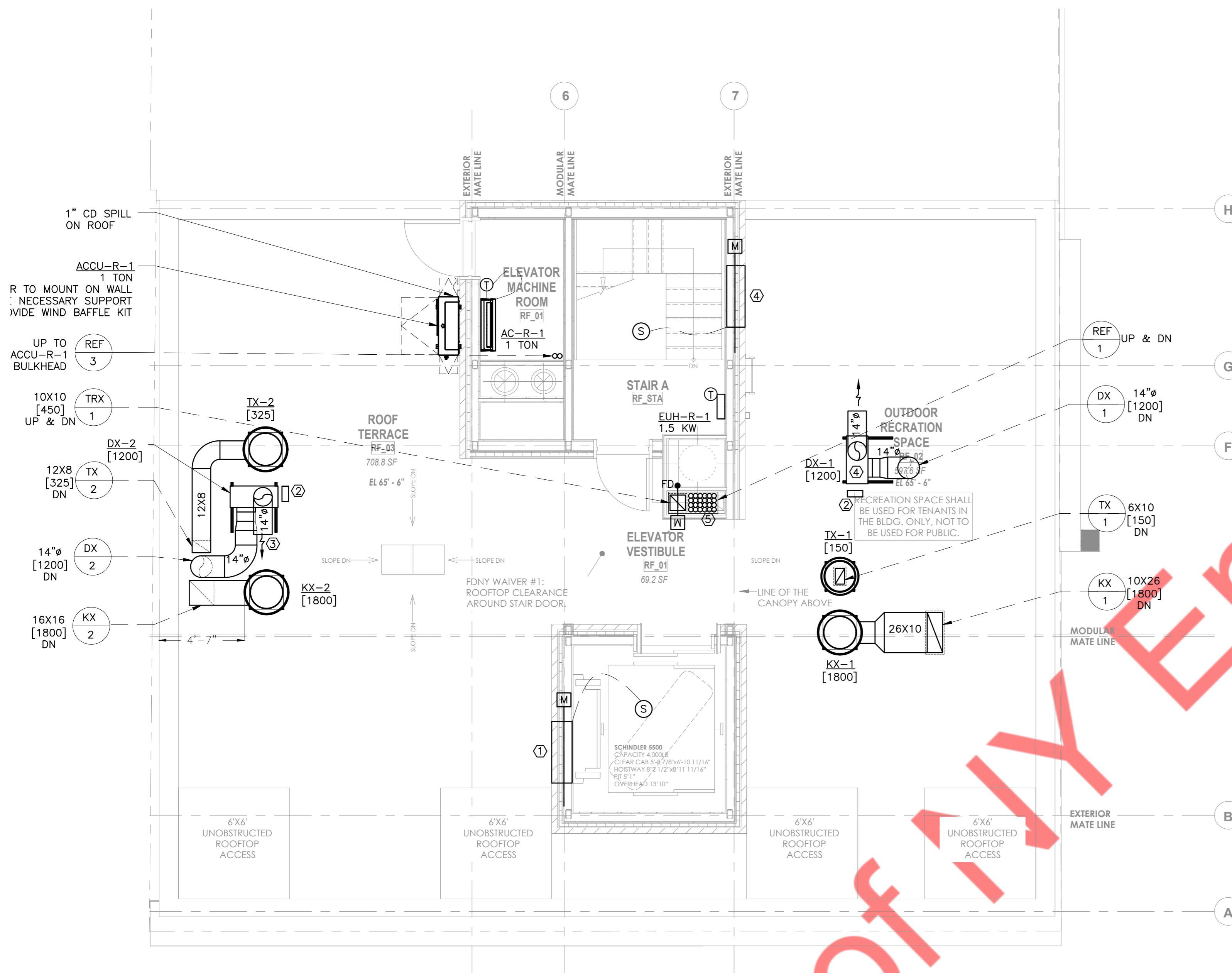
KEY NOTES:

- ① 1" CD TO NEAREST FLOOR DRAIN W/ AIR GAP. COORDINATE W/ PLUMBING DRAWING.
- ② CEILING AS RETURN PLENUM.
- ③ CONNECT KITCHEN EXHAUST DUCT TO KITCHEN HOOD TO BE SPECIFIED BY ARCHITECT.CONTRACTOR TO COORDINATE SIZE OF CONNECTION WITH FINAL HOOD SELECTION.

NOTES:

- 1) OUTDOOR AIR INTAKE, EXHAUST OPENINGS, STAIRWAY AND SHAFT VENTS SHALL BE PROVIDED WITH CLASS I MOTORIZED DAMPERS. THE DAMPERS SHALL HAVE AN AIR LEAKAGE RATE NOT GREATER THAN 4 CFM/FT² OF DAMPER SURFACE AREA AT 1.0 INCH WATER GAUGE (249 PA) AND SHALL BE LABELED BY AN APPROVED AGENCY WHEN TESTED IN ACCORDANCE WITH AMCA 500D.

① MECHANICAL PLAN - 6TH FLOOR
1/4" = 1'-0"



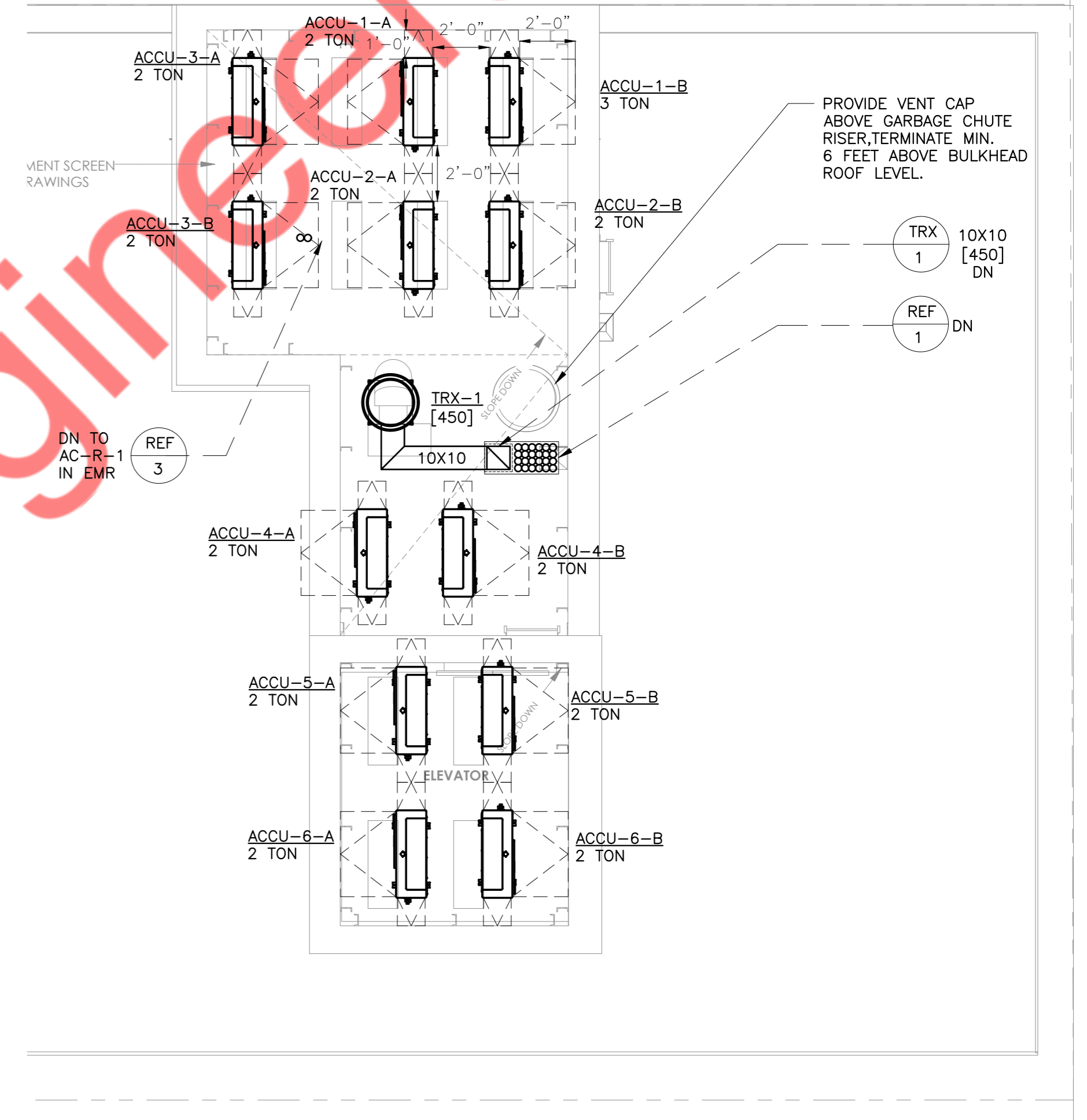
1 MECHANICAL PLAN - ROOF
1/4" = 1'-0"

NOTES:

1. ALL EXHAUST FANS SHALL BE LOCATED MINIMUM 3 FEET FROM LOT LINE.
2. AIR CONDITIONER UNIT SHALL NOT PRODUCE NOISE LEVELS IN EXCESS OF 42 DECIBELS FOR A SINGLE AIR CIRCULATING DEVICE AND 45 DECIBELS FOR THE CUMULATIVE NOISE LEVEL OF MULTIPLE AIR CIRCULATING DEVICES AS MEASURED 3 FEET FROM THE NOISE SOURCE AT AN OPEN DOOR OR WINDOW OF A NEARBY RESIDENCE.
3. PROVIDE WEATHER PROOF COATING FOR ALL EXTERIOR DUCTWORK AND PIPING INSULATION.
4. OUTDOOR AIR INTAKE, EXHAUST OPENINGS, STAIRWAY AND SHAFT VENTS SHALL BE PROVIDED WITH CLASS 1 MOTORIZED DAMPERS. THE DAMPERS SHALL HAVE AN AIR LEAKAGE RATE NOT GREATER THAN 4 CFM/FT² OF DAMPER SURFACE AREA AT 1.0 INCH WAER GAUGE (249 PA) AND SHALL BE LABELED BY AN APPROVED AGENCY WHEN TESTED IN ACCORDANCE WITH AMCA 500D.
5. COORDINATE ELEVATOR MACHINE ROOM HEAT LOAD REJECTION W/ELEV. CONSULTANT. NYE DESIGNED BASED ON 12000 BTUs.

KEY NOTES:-

- ① PROVIDE MIN. 3 S.F VENT WITH LOUVER/HATCH AT THE TOP OF ELEVATOR HOISTWAY ENCLOSURES. CONFIRM EXACT SIZE W/ARCH. & ELEVATOR CONSULTANT. PROVIDE MOTORIZED DAMPER AT LOUVER/HATCH & CONNECT TO SMOKE DETECTOR ON TOP OF ELEVATOR SHAFT TO 100% FULLY OPEN WHEN SMOKE DETECTOR IS TRIGGERED.
- ② FOR DRYER EXHAUST FAN (DX-1) AND (DX-2) ON ROOF, PROVIDE VARIABLE FREQUENCY DRIVE, MODULATING EXHAUST CONTROL AND PRESSURE TRANSDUCER. CONTRACTOR TO MOUNT ON KINDORF SUPPORT. (SEE DRAWING M-504.00 PLAN TO ALL CONFIGURATIONS) PROVIDE NEMA 3-R VENTILATED, WEATHERPROOF, ENCLOSURE. COORDINATE LOCATIONS WITH ARCHITECT.
- ③ FOR DRYER EXHAUST DUCTWORK PROVIDE GOOSENECK AND TERMINATE MINIMUM 42 INCHES ABOVE FAN AND 10 FEET AWAY OF ANY OUTSIDE AIR INTAKE OPENING AND 3 FEET AWAY OF LOT LINE.
- ④ PROVIDE MIN. 3.3 S.F VENT WITH LOUVER/HATCH AT THE TOP OF STAIRCASE ENCLOSURE. PROVIDE MOTORIZED DAMPER AT LOUVER/HATCH & CONNECT TO SMOKE DETECTOR ON TOP OF STAIRCASE ENCLOSURE TO 100% FULLY OPEN WHEN SMOKE DETECTOR IS TRIGGERED. NO OPENING SHALL BE LOCATED IN THE WALL WITHIN A DISTANCE OF 30 FEET VERTICALLY ABOVE VENT OPENING OR 5 FEET ON EITHER SIDE OF THE VENT OPENING.



2 MECHANICAL PLAN - BULKHEAD
1/4" = 1'-0"

PROVIDE VENT CAP ABOVE GARBAGE CHUTE RISER. TERMINATE MIN. 6 FEET ABOVE BULKHEAD ROOF LEVEL.